

## Internal Photos

The following photos (see Figure 1 and 2) depict the Printed Circuit Boards (PCB) found inside the OS700 Safe's assembled RFID Read Head (RH). Further below, the RH's two solder stacked PCBs are displayed individually (see Figures 3 and 4 for Antenna PCB, Figures 5 and 6 for Reader PCB). Lastly, Figures 7 and 8 depict both sides of the Safe's Control PCB.



Figure 1. The safe's assembled RFID Read Head – top view.



Figure 2. The two PCBs contained inside the OS700 Safe for reading key cards – bottom view.



Figure 3. Top view of the RH's antenna PCB.



Figure 4. Bottom view of the RH's antenna PCB.



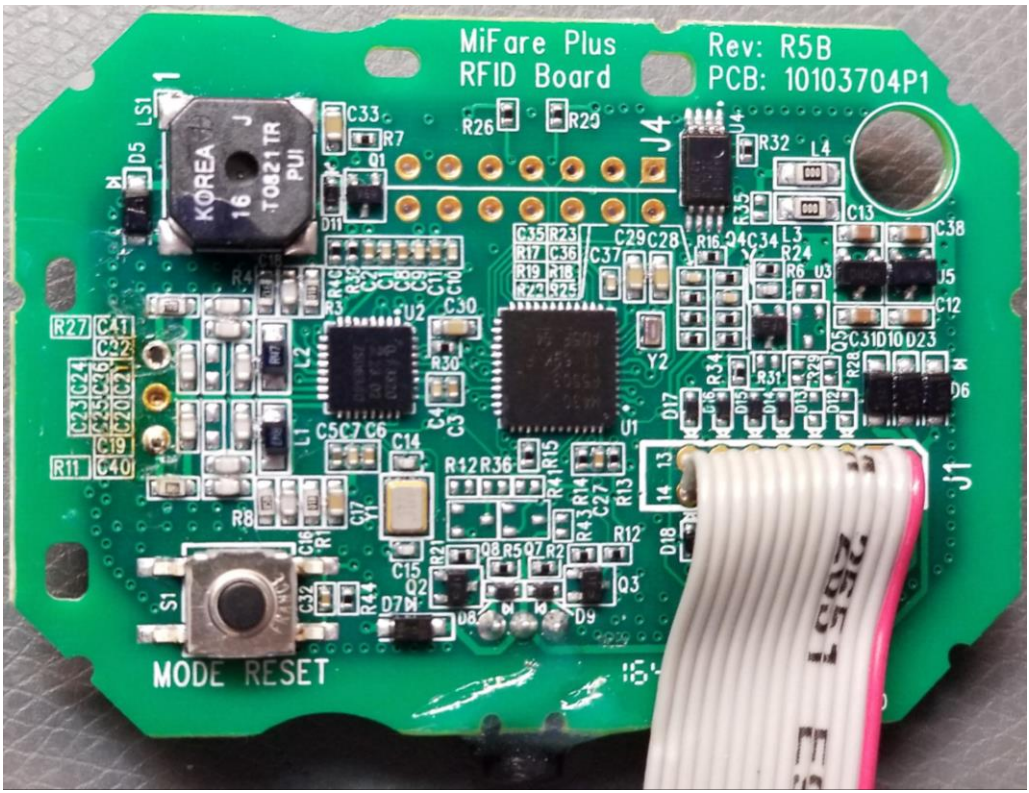


Figure 5. Top view of the RH's RFID reader PCB.

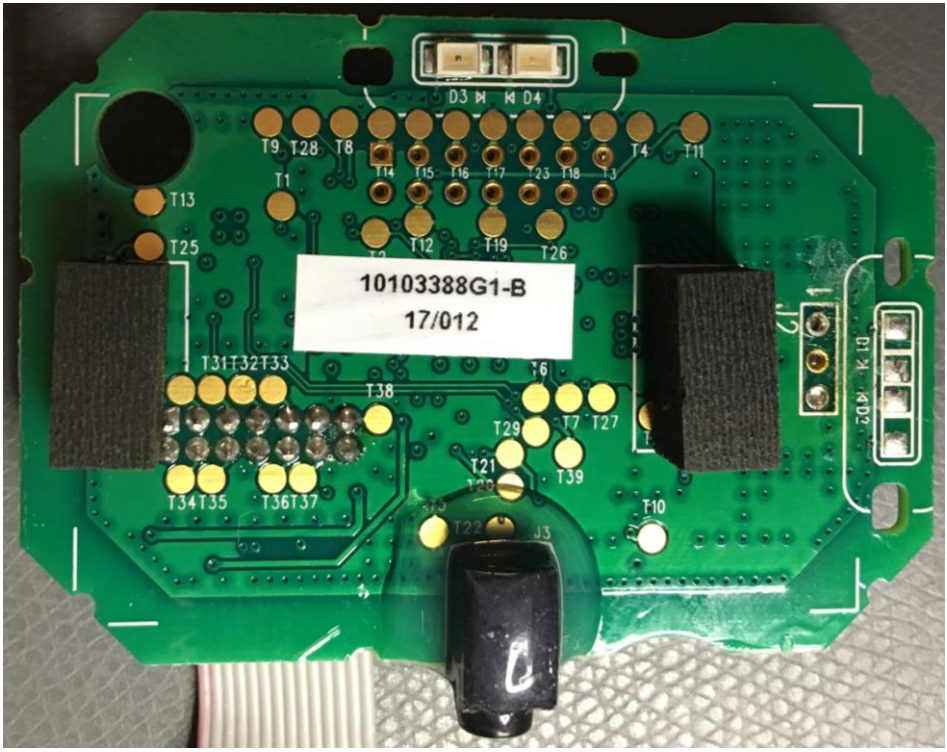


Figure 6. Bottom view of the RH's RFID reader PCB.

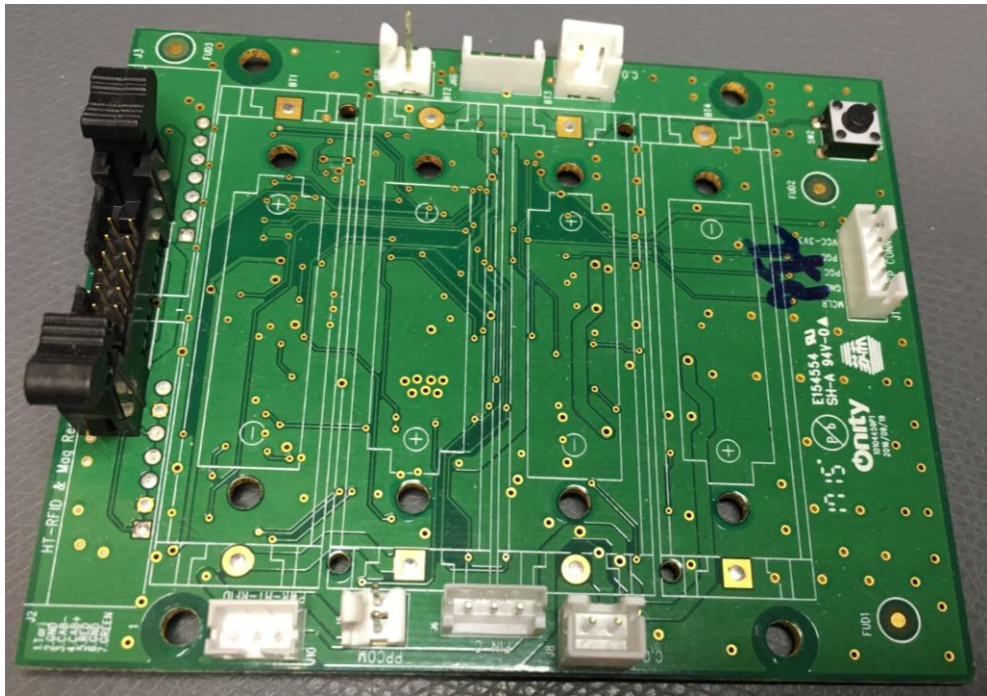


Figure 7. Top view of the OS700 Control PCB.

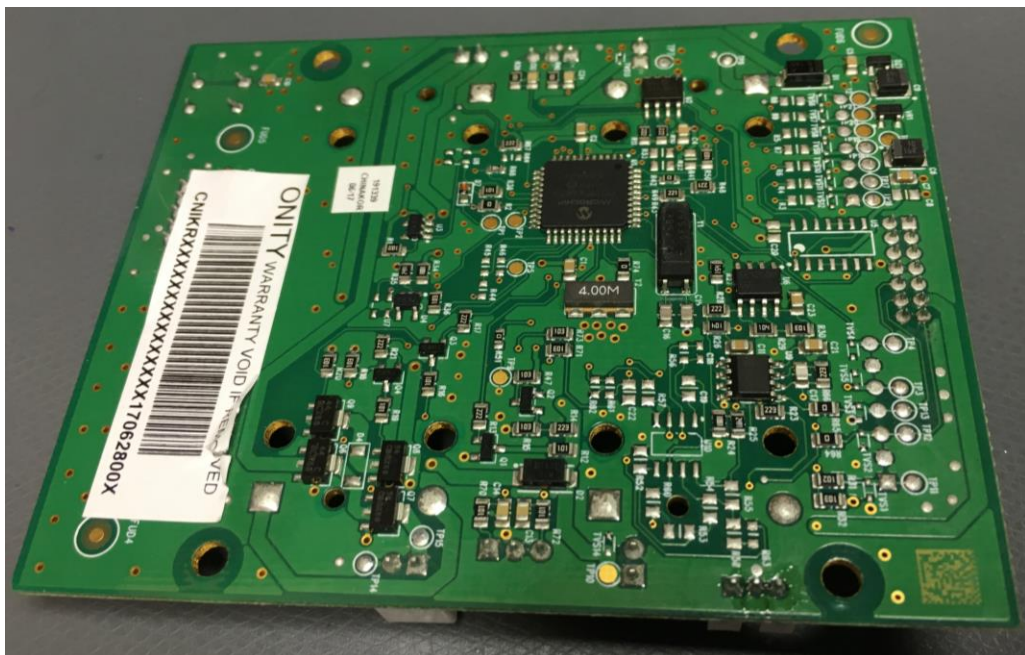


Figure 8. Bottom view of the OS700 Control PCB.