

---

# FCC Test Report

---

Report No.: AGC23K121005-3F2

**FCC ID** : R2MHI-EDO  
**PRODUCT DESIGNATION** : Bluetooth Headset  
**BRAND NAME** : N/A  
**TEST MODEL** : hi-Edo  
**CLIENT** : AVLINK INDUSTRIAL CO., LTD  
**DATE OF ISSUE** : Nov.07,2012  
**STANDARD(S)** : FCC Part 15 Rules  
**REPORT VERSION** : V1.0

**Attestation of Global Compliance Co., Ltd.**

CAUTION: This report shall not be reproduced except in full without the written permission of the test laboratory and shall not be quoted out of context.

## VERIFICATION OF COMPLIANCE

|                     |   |
|---------------------|---|
| Applicant           | AVLINK INDUSTRIAL CO., LTD  |
|                     | 7/F, A1 Bldg, Shuichanjiangwan Industrial Area, Nanchang Village, Gushu, Bao'an Dist., Shenzhen, 518216, P.R. China |
| Manufacturer        | AVLINK INDUSTRIAL CO., LTD  |
|                     | 7/F, A1 Bldg, Shuichanjiangwan Industrial Area, Nanchang Village, Gushu, Bao'an Dist., Shenzhen, 518216, P.R. China |
| Product Designation | Bluetooth Headset   |
| Brand Name          | N/A   |
| Model Name          | hi-Edo  |
| FCC ID              | R2MHI-EDO   |
| Report Number       | AGC23K121005-3F2  |
| Date of Test        | Nov.02, 2012 to Nov.07, 2012  |

### WE HEREBY CERTIFY THAT:

The above equipment was tested by Attestation of Global Compliance Co., Ltd. The test data, data evaluation, test procedures, and equipment configurations shown in this report were made in accordance with the procedures given in ANSI C63.4 (2003) and the energy emitted by the sample EUT tested as described in this report is in compliance with radiated emission limits of FCC Rules Part 15.247.

Tested By: Jane Wu  
Jane Wu Nov.07, 2012

Reviewed By: Forrest Lei  
Forrest Lei Nov.07, 2012

Approved By: Solger Zhang  
Solger Zhang Nov.07, 2012

## TABLE OF CONTENTS

|  |           |
|--|-----------|
| <b>1 GENERAL INFORMATION .....</b>                         | <b>4</b>  |
| 1.1 PRODUCT DESCRIPTION .....                              | 4         |
| 1.2 TABLE OF CARRIER FREQUENCIES .....                     | 4         |
| 1.3 RECEIVER INPUT BANDWIDTH .....                         | 5         |
| 1.4 EXAMPLE OF A HOPPING SEQUENCY IN DATA MODE .....       | 6         |
| 1.5 EQUALLY AVERAGE USE OF FREQUENCIES AND BEHAVIOUR ..... | 6         |
| 1.6 RELATED SUBMITTAL(S) / GRANT (S) .....                 | 6         |
| 1.7 TEST METHODOLOGY .....                                 | 6         |
| 1.8 TEST FACILITY .....                                    | 7         |
| 1.9 SPECIAL ACCESSORIES .....                              | 7         |
| 1.10 EQUIPMENT MODIFICATIONS .....                         | 7         |
| <b>2 SYSTEM TEST CONFIGURATION .....</b>                   | <b>8</b>  |
| 2.1 CONFIGURATION OF TESTED SYSTEM .....                   | 8         |
| 2.2 EQUIPMENT USED IN TESTED SYSTEM .....                  | 8         |
| <b>3 SUMMARY OF TEST RESULTS.....</b>                      | <b>9</b>  |
| <b>4. DESCRIPTION OF TEST MODES .....</b>                  | <b>9</b>  |
| <b>5 PEAK OUTPUT POWER.....</b>                            | <b>10</b> |
| 5.1 MEASUREMENT PROCEDURE .....                            | 10        |
| 5.2 TEST SET-UP (BLOCK DIAGRAM OF CONFIGURATION) .....     | 10        |
| 5.3 MEASUREMENT EQUIPMENT USED .....                       | 11        |
| 5.4 LIMITS AND MEASUREMENT RESULT .....                    | 11        |
| <b>6 20 DB BANDWIDTH .....</b>                             | <b>12</b> |
| 6.1 MEASUREMENT PROCEDURE .....                            | 12        |
| 6.2 TEST SET-UP (BLOCK DIAGRAM OF CONFIGURATION) .....     | 12        |
| 6.3 MEASUREMENT EQUIPMENT USED .....                       | 12        |
| 6.4 LIMITS AND MEASUREMENT RESULTS .....                   | 12        |
| <b>7. CONDUCTED SPURIOUS EMISSION .....</b>                | <b>14</b> |
| 7.1 MEASUREMENT PROCEDURE .....                            | 14        |
| 7.2 TEST SET-UP (BLOCK DIAGRAM OF CONFIGURATION) .....     | 14        |
| 7.3 MEASUREMENT EQUIPMENT USED .....                       | 14        |
| 7.4 LIMITS AND MEASUREMENT RESULT .....                    | 14        |
| <b>8 CONDUCTED EMISSION .....</b>                          | <b>16</b> |
| 8.1 .LIMITS OF LINE CONDUCTED EMISSION TEST .....          | 16        |
| 8.2. BLOCK DIAGRAM OF LINE CONDUCTED EMISSION TEST .....   | 16        |
| 8.3. PROCEDURE OF LINE CONDUCTED EMISSION TEST .....       | 17        |
| 8.4 TEST RESULT OF LINE CONDUCTED EMISSION TEST .....      | 18        |
| <b>9 RADIATED EMISSION .....</b>                           | <b>20</b> |
| 9.1 MEASUREMENT PROCEDURE .....                            | 20        |
| 9.2 TEST SETUP .....                                       | 21        |
| 9.3 TEST EQUIPMENT LIST .....                              | 22        |
| 9.4 TEST RESULT .....                                      | 23        |
| <b>10 BAND EDGES EMISSION .....</b>                        | <b>27</b> |
| 10.1 MEASUREMENT PROCEDURE .....                           | 27        |
| 10.2 TEST SET-UP .....                                     | 27        |
| 10.3 TEST RESULT .....                                     | 27        |

|  |           |
|--|-----------|
| <b>11. NUMBER OF HOPPING FREQUENCY .....</b>           | <b>31</b> |
| 11.1 MEASUREMENT PROCEDURE .....                       | 31        |
| 11.2 TEST SETUP (BLOCK DIAGRAM OF CONFIGURATION) ..... | 31        |
| 11.3 MEASUREMENT EQUIPMENT USED .....                  | 31        |
| 11.4 LIMITS AND MEASUREMENT RESULT .....               | 31        |
| <b>12 TIME OF OCCUPANCY (DWELL TIME) .....</b>         | <b>32</b> |
| 12.1 MEASUREMENT PROCEDURE .....                       | 32        |
| 12.2 TEST SETUP (BLOCK DIAGRAM OF CONFIGURATION) ..... | 32        |
| 12.3 MEASUREMENT EQUIPMENT USED .....                  | 32        |
| 12.4 LIMITS AND MEASUREMENT RESULT .....               | 32        |
| <b>13. FREQUENCY SEPARATION .....</b>                  | <b>35</b> |
| 13.1 MEASUREMENT PROCEDURE .....                       | 35        |
| 13.2 TEST SETUP (BLOCK DIAGRAM OF CONFIGURATION) ..... | 35        |
| 13.3 MEASUREMENT EQUIPMENT USED .....                  | 35        |
| 13.4 LIMITS AND MEASUREMENT RESULT .....               | 35        |
| <b>APPENDIX I .....</b>                                | <b>36</b> |
| <b>PHOTOGRAPHS OF THE EUT .....</b>                    | <b>36</b> |
| <b>APPENDIX II .....</b>                               | <b>41</b> |
| <b>PHOTOGRAPHS OF THE TEST SETUP .....</b>             | <b>41</b> |

## 1 .GENERAL INFORMATION

### 1.1 PRODUCT DESCRIPTION

The EUT is a **BLUETOOTH HEADSET** designed as a “Communication Device”. It is designed by way of utilizing the FHSS technology to achieve the system operation.

A major technical description of EUT is described as following

|                     |                                   |
|---------------------|-----------------------------------|
| Operation Frequency | 2.402 GHz to 2.480GHz             |
| Rated Output Power  | 3.59dBm(max) for GFSK modulation  |
| Bluetooth Version   | V3.0 with EDR                     |
| Modulation          | GFSK, $\pi/4$ -DQPSK, 8DPSK       |
| Number of channels  | 79                                |
| Antenna Designation | Integrated Antenna                |
| Antenna Gain        | 0.8dBi                            |
| Hardware Version    | V 2                               |
| Software Version    | V 2                               |
| Power Supply        | DC3.7V by Built-in Li-ion Battery |

### 1.2 TABLE OF CARRIER FREQUENCIES

| Frequency Band | Channel Number | Frequency |
|----------------|----------------|-----------|
| 2400~2483.5MHZ | 0              | 2402MHZ   |
|                | 1              | 2403MHZ   |
|                | :              | :         |
|                | 38             | 2440 MHZ  |
|                | 39             | 2441 MHZ  |
|                | 40             | 2442 MHZ  |
|                | :              | :         |
|                | 77             | 2479 MHZ  |
|                | 78             | 2480 MHZ  |

### 1.3 RECEIVER INPUT BANDWIDTH

The input bandwidth of the receiver is 1.3 MHz. In every connection one Bluetooth device is the master and the other one is slave. The master determines the hopping sequence. The slave follows this sequence. Both devices shift between RX and TX time slot according to the clock of the master. Additionally the type of connection (e.g. single or multisport (packet)) is set up at the beginning of the connection. The master adapts its hopping frequency and its TX/RX timing according to the packet type of the connection. Also the slave of the connection will use these settings.

Repeating of a packet has no influence on the hopping sequence. The hopping sequence generated by the master of the connection will be followed in any case. That means, a repeated packet will not be sent on the same frequency, it is sent on the next frequency of the hopping sequence.

#### 1.4 EXAMPLE OF A HOPPING SEQUENCY IN DATA MODE

Example of a 79 hopping sequence in data mode:

40,21,44,23,42,53,46,55,48,33,52,35,50,65,54,67  
56,37,60,39,58,69,62,71,64,25,68,27,66,57,70,59  
72,29,76,31,74,61,78,63,01,41,05,43,03,73,07,75  
09,45,13,47,11,77,15,00,64,49,66,53,68,02,70,06  
01,51,03,55,05,04

#### 1.5 EQUALLY AVERAGE USE OF FREQUENCIES AND BEHAVIOUR

The generation of the hopping sequence in connection mode depends essentially on two input values:

1 LAP/UAP of the master of the connection

2 Internal master clock

The LAP(lower address part) are the 24 LSB's of the 48 BD\_ADDRESS. The BD\_ADDRESS is an unambiguous number of every Bluetooth unit. The UAP(upper address part) are the 24MSB's of the 48BD\_ADDRESS

The internal clock of a Bluetooth unit is derived from a free running clock which is never adjusted and is never turned off. For synchronization with other units only offset are used. It has no relation to the time of the day. Its resolution is at least half the RX/TX slot length of 312.5us. The clock has a cycle of about One day(23h30). In most case it is implemented as 28 bit counter. For the deriving of the hopping sequence the entire.

LAP(24 bits), 4LSB's(4bits)(Input 1) and the 27MSB's of the clock(Input 2) are used. With this input values different mathematical procedures(permutations, additions, XOR-operations)are performed to generate the Sequence. This will be done at the beginning of every new transmission.

Regarding short transmissions the Bluetooth system has the following behavior:

The first connection between the two devices is established, a hopping sequence was generated. For Transmitting the wanted data the complete hopping sequence was not used. The connection ended.

The second connection will be established. A new hopping sequence is generated. Due to the fact the Bluetooth clock has a different value, because the period between the two transmission is longer(and it Cannot be shorter)than the minimum resolution of the clock(312.5us). The hopping sequence will always Differ from the first one.

#### 1.6 RELATED SUBMITTAL(S) / GRANT (S)

This submittal(s) (test report) is intended for **FCC ID: R2MHI-EDO** filing to comply with Section 15.247 of the FCC Part 15, Subpart C Rules.

#### 1.7 TEST METHODOLOGY

Both conducted and radiated testing were performed according to the procedures in ANSI C63.4 (2003). Radiated testing was performed at an antenna to EUT distance 3 meters.

## **1.8 TEST FACILITY**

All measurement facilities used to collect the measurement data are located at Attestation of Global Compliance Co., Ltd.

1@2F., No.2 Building, Huafeng No.1 Technical Industrial Park, Sanwei, Xixiang, Baoan District, Shenzhen  
The test site is constructed and calibrated to meet the FCC requirements in documents ANSI C63.4: 2003.  
FCC register No.: 259865

## **1.9 SPECIAL ACCESSORIES**

Refer to section 2.2.

## **1.10 EQUIPMENT MODIFICATIONS**

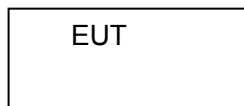
Not available for this EUT intended for grant.



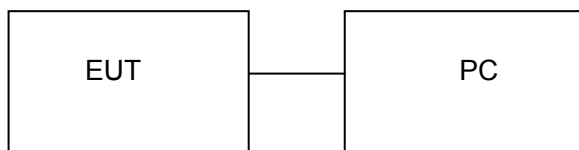
## 2 SYSTEM TEST CONFIGURATION

### 2.1 CONFIGURATION OF TESTED SYSTEM

**Configure 1**(Normal Hopping mode)



**Configure 2**(control continuous TX through PC)



*Note: All the accessories have been used during the test.*

### 2.2 EQUIPMENT USED IN TESTED SYSTEM

| Item | Equipment         | Mfr/Brand | Model/Type No. | Remark |
|------|-------------------|-----------|----------------|--------|
| 1    | BLUETOOTH HEADSET | N/A       | hi-Edo         | EUT    |
| 2    | PC                | DELL      | INSPIRON       | A.E    |

### 3 SUMMARY OF TEST RESULTS

| FCC RULES | DESCRIPTION OF TEST         | RESULT    |
|-----------|-----------------------------|-----------|
| §15.247   | Peak Output Power           | Compliant |
| §15.247   | 20 dB Bandwidth             | Compliant |
| §15.247   | Conducted Spurious Emission | Compliant |
| §15.207   | Conduction Emission         | Compliant |
| §15.209   | Radiated Emission           | Compliant |
| §15.247   | Band Edges                  | Compliant |
| §15.247   | Number of Hopping Frequency | Compliant |
| §15.247   | Time of Occupancy           | Compliant |
| §15.247   | Frequency Separation        | Compliant |

### 4. DESCRIPTION OF TEST MODES

The EUT has been operated in three modulations: GFSK,  $\pi/4$ -DQPSK, 8-DPSK independently. The following operating modes were applied for the related test items. For Radiated Emission.

| No. | TEST MODES             |
|-----|------------------------|
| 1   | Low Channel(TX)        |
| 2   | Middle Channel(TX)     |
| 3   | High Channel(TX)       |
| 4   | Normal Hopping         |
| 5   | Standby(Charged by PC) |

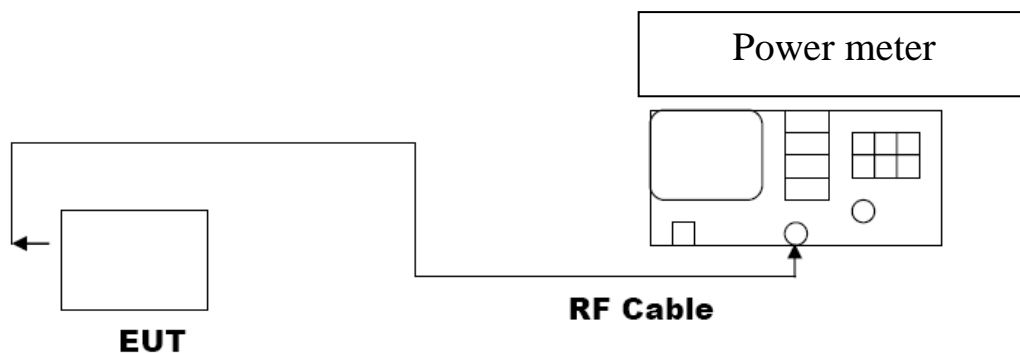
**Note:** All the test modes can be supply by Built-in Li-ion battery, only the result of the worst case was recorded in the report.

## 5 PEAK OUTPUT POWER

### 5.1 MEASUREMENT PROCEDURE

1. The EUT was placed on a turn table which is 0.8m above ground plane.
2. Connect EUT RF output port to the Power meter.
3. Set the EUT Work on the top, the middle and the bottom operation frequency individually.

### 5.2 TEST SET-UP (BLOCK DIAGRAM OF CONFIGURATION)



### 5.3 MEASUREMENT EQUIPMENT USED

| Description | Manufacturer | Model   | SERIAL NUMBER | Cal. Date  | Cal. Due   |
|-------------|--------------|---------|---------------|------------|------------|
| Power meter | R&S          | NRP-Z23 | N/A           | 07/18/2012 | 07/17/2013 |

### 5.4 LIMITS AND MEASUREMENT RESULT

| PEAK OUTPUT POWER MEASUREMENT RESULT<br>FOR GFSK MODULATION |                 |                            |              |
|---|-----------------|----------------------------|--------------|
| Frequency<br>(GHz)  | Result<br>(dBm) | Applicable Limits<br>(dBm) | Pass or Fail |
| 2.402   | 3.59            | 30                         | Pass         |
| 2.441   | 3.48            | 30                         | Pass         |
| 2.480   | 3.51            | 30                         | Pass         |

| PEAK OUTPUT POWER MEASUREMENT RESULT<br>FOR $\pi/4$ -DQPSK, 8DPSK MODULATION |                             |                             |                            |              |
|--|-----------------------------|-----------------------------|----------------------------|--------------|
| Frequency<br>(GHz)   | Test Result<br>2 Mbps (dBm) | Test Result<br>3 Mbps (dBm) | Applicable<br>Limits (dBm) | Pass or Fail |
| 2.402  | 3.23                        | 2.98                        | 30                         | Pass         |
| 2.441  | 3.34                        | 2.76                        | 30                         | Pass         |
| 2.480  | 3.19                        | 2.71                        | 30                         | Pass         |

## 6 20 DB BANDWIDTH

### 6.1 MEASUREMENT PROCEDURE

1. The EUT was placed on a turn table which is 0.8m above ground plane.
2. Connect EUT RF output port to the Spectrum Analyzer through an RF attenuator
3. Set the EUT Work on the top, the middle and the bottom operation frequency individually.
4. Set Span = approximately 2 to 3 times the 20 dB bandwidth, centered on a hopping channel  
RBW  $\geq$  1% of the 20 dB bandwidth, VBW  $\geq$  RBW; Sweep = auto; Detector function = peak
5. Set SPA Trace 1 Max hold, then View.

### 6.2 TEST SET-UP (BLOCK DIAGRAM OF CONFIGURATION)

The same as described in Section 5.2

### 6.3 MEASUREMENT EQUIPMENT USED

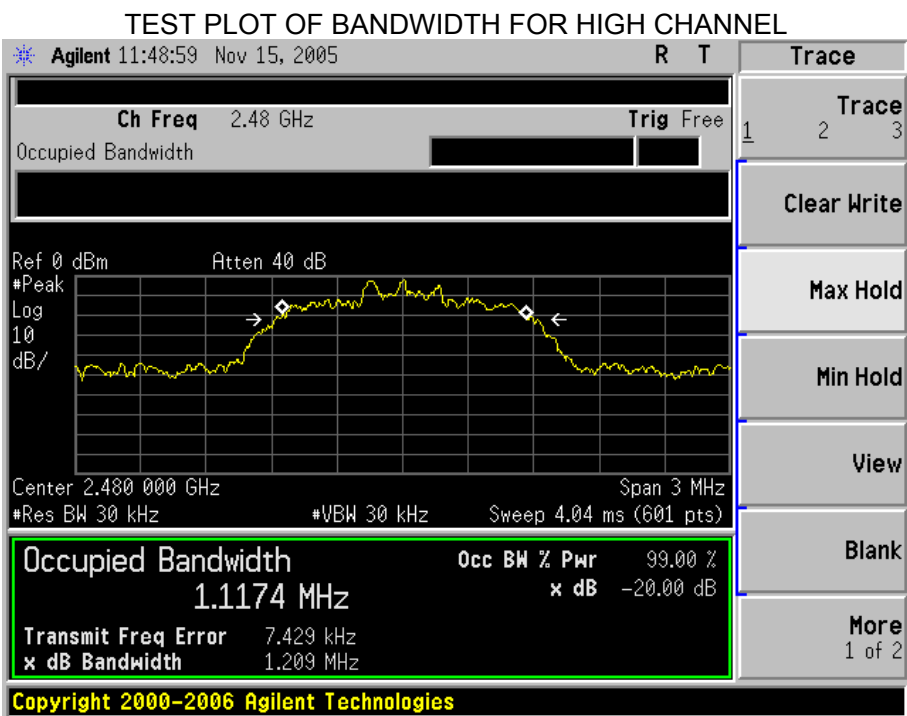
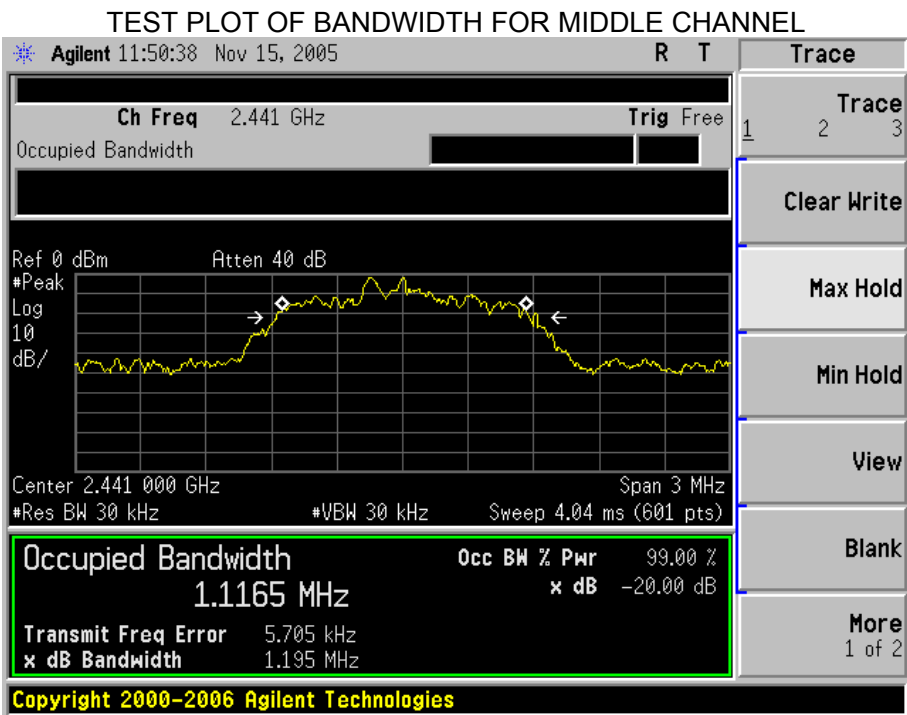
The same as described in Section 5.3

### 6.4 LIMITS AND MEASUREMENT RESULTS

| THE MEASUREMENT RESULT WITH THE WORST CASE OF 3MBPS FOR 8-DPSK MODULATION |                    |       |          |
|---|--------------------|-------|----------|
| Applicable Limits   | Measurement Result |       |          |
|   | Test Data (MHz)    |       | Criteria |
| --  | Low Channel        | 1.213 | PASS     |
|   | Middle Channel     | 1.195 | PASS     |
|   | High Channel       | 1.209 | PASS     |

TEST PLOT OF BANDWIDTH FOR LOW CHANNEL





## 7. CONDUCTED SPURIOUS EMISSION

### 7.1 MEASUREMENT PROCEDURE

1. The EUT was placed on a turn table which is 0.8m above ground plane.
2. Connect EUT RF output port to the Spectrum Analyzer through an RF attenuator
3. Set the EUT Work on the top, the middle and the bottom operation frequency individually.
4. Set the Span = wide enough to capture the peak level of the in-band emission and all spurious emissions from the lowest frequency generated in the EUT up through the 10th harmonic.  
RBW = 100 kHz; VBW  $\geq$  RBW; Sweep = auto; Detector function = peak.
5. Set SPA Trace 1 Max hold, then View.

### 7.2 TEST SET-UP (BLOCK DIAGRAM OF CONFIGURATION)

The same as described in section 5.2

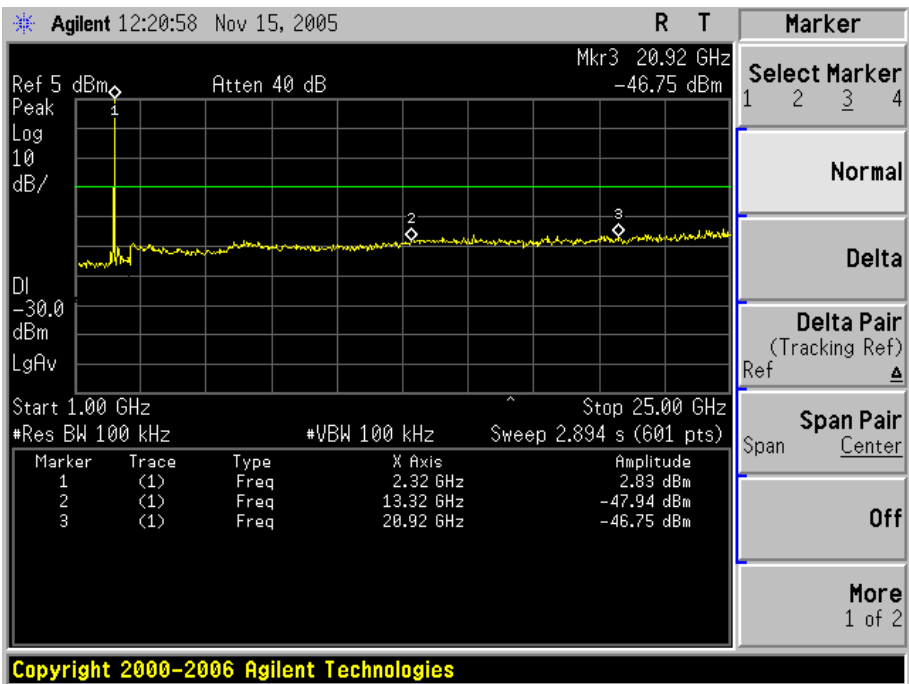
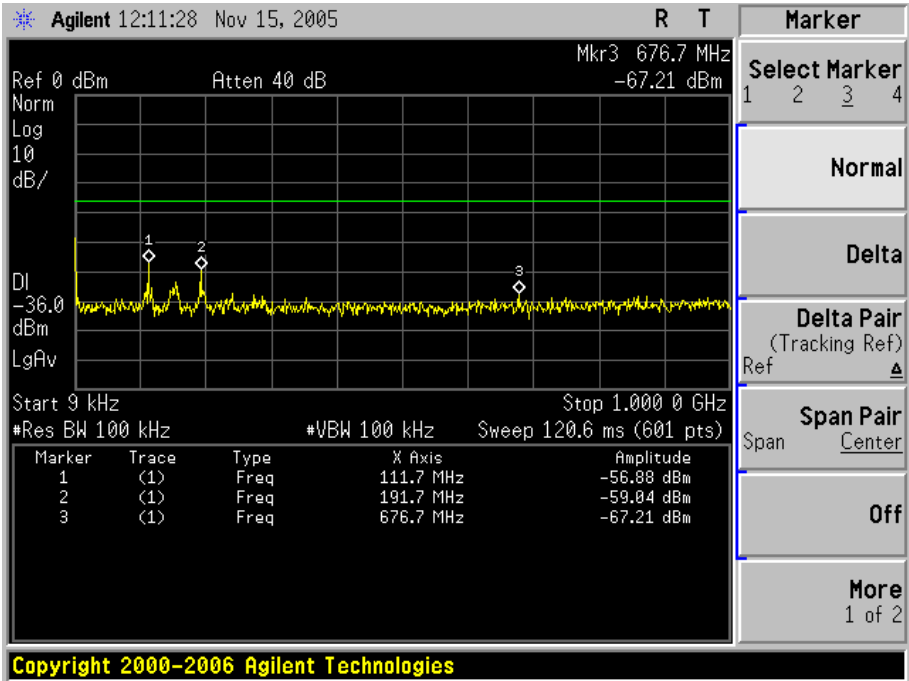
### 7.3 MEASUREMENT EQUIPMENT USED

The same as described in section 5.3

### 7.4 LIMITS AND MEASUREMENT RESULT

| LIMITS AND MEASUREMENT RESULT  |  |          |
|--|--|----------|
| Applicable Limits  | Measurement Result   |          |
|  | Test Data  | Criteria |
| In any 100 KHz Bandwidth Outside the frequency band in which the spread spectrum intentional radiator is operating, the radio frequency power that is produce by the intentional radiator shall be at least 20 dB below that in 100KHz bandwidth within the band that contains the highest level of the desired power. | At least -20dBc than the limit Specified on the BOTTOM Channel | PASS     |
| In addition, radiation emissions which fall in the restricted bands, as defined in §15.205(a), must also comply with the radiated emission limits specified in§15.209(a))  | At least -20dBc than the limit Specified on the TOP Channel    | PASS     |

TEST PLOT OF OUT OF BAND EMISSIONS WITH THE WORST CASE  
OF 1 MBPS FOR GFSK MODULATION IN LOW CHANNEL





## 8 CONDUCTED EMISSION

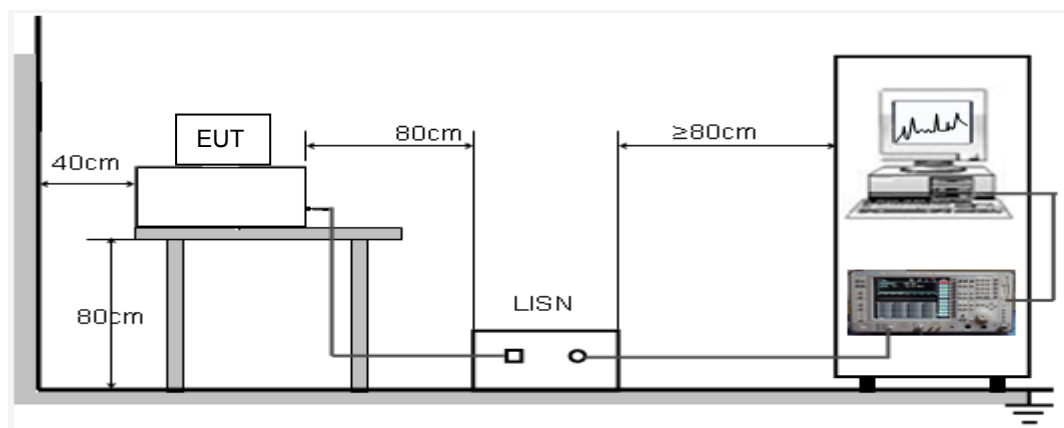
### 8.1 .LIMITS OF LINE CONDUCTED EMISSION TEST

| Frequency     | Maximum RF Line Voltage |                |
|---------------|-------------------------|----------------|
|               | Q.P.( dBuV)             | Average( dBuV) |
| 150kHz~500kHz | 66-56                   | 56-46          |
| 500kHz~5MHz   | 56                      | 46             |
| 5MHz~30MHz    | 60                      | 50             |

**\*\*Note:** 1. The lower limit shall apply at the transition frequency.

2. The limit decreases linearly with the logarithm of the frequency in the range 0.15 MHz to 0.50 MHz

### 8.2. BLOCK DIAGRAM OF LINE CONDUCTED EMISSION TEST



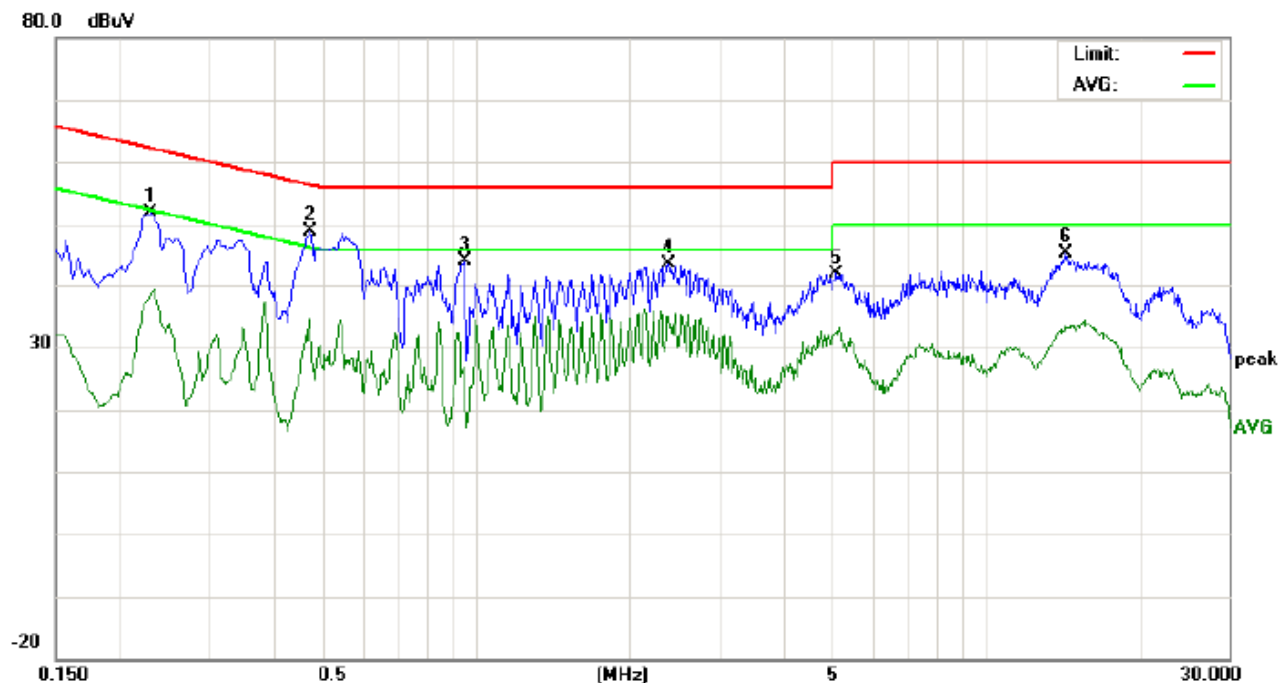
### 8.3. PROCEDURE OF LINE CONDUCTED EMISSION TEST

- 1) The equipment was set up as per the test configuration to simulate typical actual usage per the user's manual. When the EUT is a tabletop system, a wooden table with a height of 0.8 meters is used and is placed on the ground plane as per ANSI C63.4 (see Test Facility for the dimensions of the ground plane used). When the EUT is a floor-standing equipment, it is placed on the ground plane which has a 3-12 mm non-conductive covering to insulate the EUT from the ground plane.
- 2) Support equipment, if needed, was placed as per ANSI C63.4.
- 3) All I/O cables were positioned to simulate typical actual usage as per ANSI C63.4.
- 4) The EUT received DC 5V power by PC which received 120V/60Hz power from socket under the turntable through a LISN.
- 5) The EUT test program was started. Emissions were measured on each current carrying line of the EUT using a spectrum Analyzer / Receiver connected to the LISN powering the EUT. The LISN has two monitoring points: Line 1 (Hot Side) and Line 2 (Neutral Side). Two scans were taken: one with Line 1 connected to Analyzer / Receiver and Line 2 connected to a 50 ohm load; the second scan had Line 1 connected to a 50 ohm load and Line 2 connected to the Analyzer / Receiver.
- 6) Analyzer / Receiver scanned from 150 kHz to 30MHz for emissions in each of the test modes.
- 7) During the above scans, the emissions were maximized by cable manipulation.
- 8) A scan was taken on both power lines, Line 1 and Line 2, recording at least the six highest emissions.
- 9) Emission frequency and amplitude were recorded into a computer in which correction factors were used to calculate the emission level and compare reading to the applicable limit. If EUT emission level was less -2dB to the A.V. limit in Peak mode, then the emission signal was re-checked using Q.P and Average detector.

The test data of the worst case condition(s) was reported on the Summary Data page.

## 8.4 TEST RESULT OF LINE CONDUCTED EMISSION TEST

### LINE CONDUCTED EMISSION – L



Site: Conduction

Phase: **L1**

Temperature: 26

Limit: FCC Class B Conduction(QP)

Power:

Humidity: 60 %

EUT: Bluetooth Headset

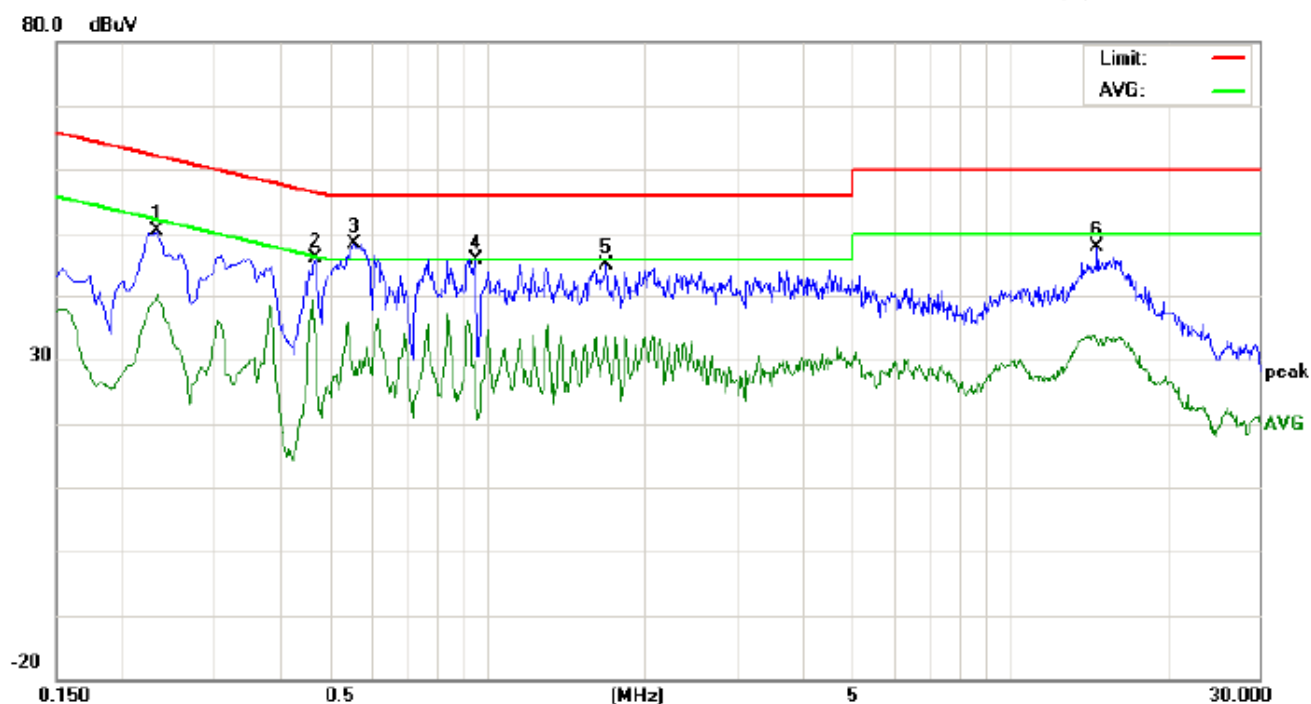
M/N: hi-Edo

Mode: Standby

Note:

| No. | Freq.<br>(MHz) | Reading_Level<br>(dBuV) |    |       | Correct<br>Factor<br>dB | Measurement<br>(dBuV) |    |       | Limit<br>(dBuV) |       | Margin<br>(dB) |        | P/F | Comment |
|-----|----------------|-------------------------|----|-------|-------------------------|-----------------------|----|-------|-----------------|-------|----------------|--------|-----|---------|
|     |                | Peak                    | QP | AVG   |                         | Peak                  | QP | AVG   | QP              | AVG   | QP             | AVG    |     |         |
| 1   | 0.2300         | 41.51                   |    | 28.17 | 10.25                   | 51.76                 |    | 38.42 | 62.45           | 52.45 | -10.69         | -14.03 | P   |         |
| 2   | 0.4740         | 38.41                   |    | 23.69 | 10.38                   | 48.79                 |    | 34.07 | 56.44           | 46.44 | -7.65          | -12.37 | P   |         |
| 3   | 0.9500         | 33.62                   |    | 15.30 | 10.39                   | 44.01                 |    | 25.69 | 56.00           | 46.00 | -11.99         | -20.31 | P   |         |
| 4   | 2.3860         | 33.33                   |    | 24.46 | 10.38                   | 43.71                 |    | 34.84 | 56.00           | 46.00 | -12.29         | -11.16 | P   |         |
| 5   | 5.1020         | 31.55                   |    | 22.01 | 10.24                   | 41.79                 |    | 32.25 | 60.00           | 50.00 | -18.21         | -17.75 | P   |         |
| 6   | 14.3180        | 35.24                   |    | 23.22 | 10.12                   | 45.36                 |    | 33.34 | 60.00           | 50.00 | -14.64         | -16.66 | P   |         |

# LINE CONDUCTED EMISSION – N



|                                   |                 |                 |
|-----------------------------------|-----------------|-----------------|
| Site: Conduction                  | Phase: <b>N</b> | Temperature: 26 |
| Limit: FCC Class B Conduction(QP) | Power:          | Humidity: 60 %  |
| EUT: Bluetooth Headset            |                 |                 |
| M/N: hi-Edo                       |                 |                 |
| Mode: Standby                     |                 |                 |
| Note:                             |                 |                 |

| No. | Freq.<br>(MHz) | Reading_Level<br>(dBuV) |    |       | Correct<br>Factor | Measurement<br>(dBuV) |    |       | Limit<br>(dBuV) |       | Margin<br>(dB) |        | P/F | Comment |
|-----|----------------|-------------------------|----|-------|-------------------|-----------------------|----|-------|-----------------|-------|----------------|--------|-----|---------|
|     |                | Peak                    | QP | AVG   |                   | Peak                  | QP | AVG   | QP              | AVG   | QP             | AVG    |     |         |
| 1   | 0.2340         | 40.03                   |    | 29.79 | 10.25             | 50.28                 |    | 40.04 | 62.30           | 52.30 | -12.02         | -12.26 | P   |         |
| 2   | 0.4700         | 35.66                   |    | 21.76 | 10.38             | 46.04                 |    | 32.14 | 56.51           | 46.51 | -10.47         | -14.37 | P   |         |
| 3   | 0.5580         | 38.04                   |    | 17.28 | 10.35             | 48.39                 |    | 27.63 | 56.00           | 46.00 | -7.61          | -18.37 | P   |         |
| 4   | 0.9500         | 35.54                   |    | 18.46 | 10.39             | 45.93                 |    | 28.85 | 56.00           | 46.00 | -10.07         | -17.15 | P   |         |
| 5   | 1.6900         | 34.80                   |    | 23.39 | 10.32             | 45.12                 |    | 33.71 | 56.00           | 46.00 | -10.88         | -12.29 | P   |         |
| 6   | 14.6900        | 37.71                   |    | 22.97 | 10.12             | 47.83                 |    | 33.09 | 60.00           | 50.00 | -12.17         | -16.91 | P   |         |

## **9 RADIATED EMISSION**

### **9.1 MEASUREMENT PROCEDURE**

1. Configure the EUT according to ANSI C63.4. The EUT was placed on the top of the turntable 0.8 meter above ground. The phase center of the receiving antenna mounted on the top of a height-variable antenna tower was placed 3 meters far away from the turntable.
2. Power on the EUT and all the supporting units. The turntable was rotated by 360 degrees to determine the position of the highest radiation.
3. The height of the broadband receiving antenna was varied between one meter and four meters above ground to find the maximum emissions field strength of both horizontal and vertical polarization.
4. For each suspected emissions, the antenna tower was scan (from 1 M to 4 M) and then the turntable was rotated (from 0 degree to 360 degrees) to find the maximum reading.
5. Set the test-receiver system to Peak or CISPR quasi-peak Detect Function with specified bandwidth under Maximum Hold Mode.
6. For emissions above 1GHz, use 1MHz VBW and RBW for peak reading. Then 1MHz RBW and 10Hz VBW for average reading in spectrum analyzer.
7. When the radiated emissions limits are expressed in terms of the average value of the emissions, and pulsed operation is employed, the measurement field strength shall be determined by averaging over one complete pulse train, including blanking intervals, as long as the pulse train does not exceed 0.1 seconds. As an alternative (provided the transmitter operates for longer than 0.1 seconds) or in cases where the pulse train exceeds 0.1 seconds, the measured field strength shall be determined from the average absolute voltage during a 0.1 second interval during which the field strength is at its maximum value.
8. If the emissions level of the EUT in peak mode was 3 dB lower than the average limit specified, then testing will be stopped and peak values of EUT will be reported, otherwise, the emissions which do not have 3 dB margin will be repeated one by one using the quasi-peak method for below 1GHz.
9. For testing above 1GHz, the emissions level of the EUT in peak mode was lower than average limit (that means the emissions level in peak mode also complies with the limit in average mode), then testing will be stopped and peak values of EUT will be reported, otherwise, the emissions will be measured in average mode again and reported.
10. In case the emission is lower than 30MHz, loop antenna has to be used for measurement and the recorded data should be QP measured by receiver. High – Low scan is not required in this case.

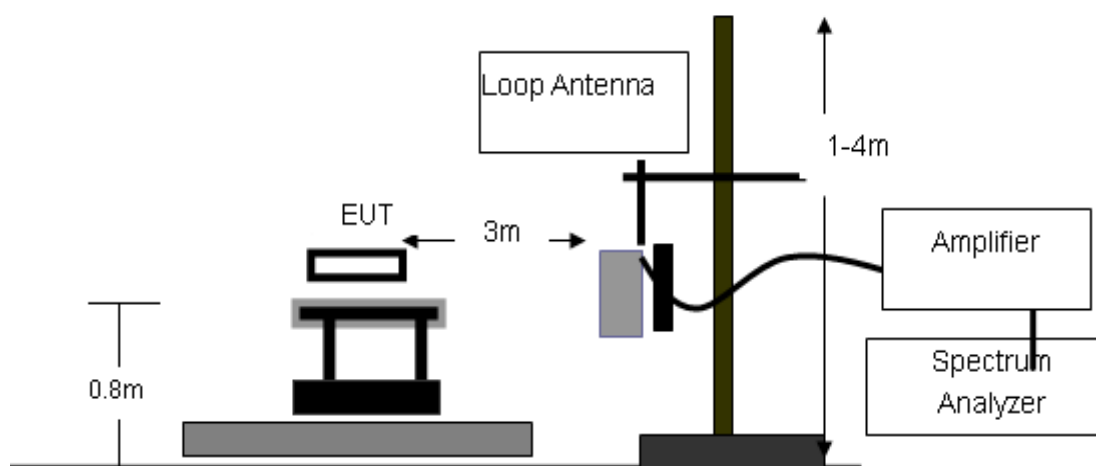
The following table is the setting of spectrum analyzer and receiver.'

| Spectrum Parameter                     | Setting                                   |
|--|---|
| Start Frequency                        | 1GHz                                      |
| Stop Frequency                         | 26.5GHz                                   |
| RB/VB(Emission in restricted band)     | 1MHz/1MHz for Peak, 1MHz/10Hz for Average |
| RB/VB(Emission in non-restricted band) | 1MHz/1MHz for Peak                        |

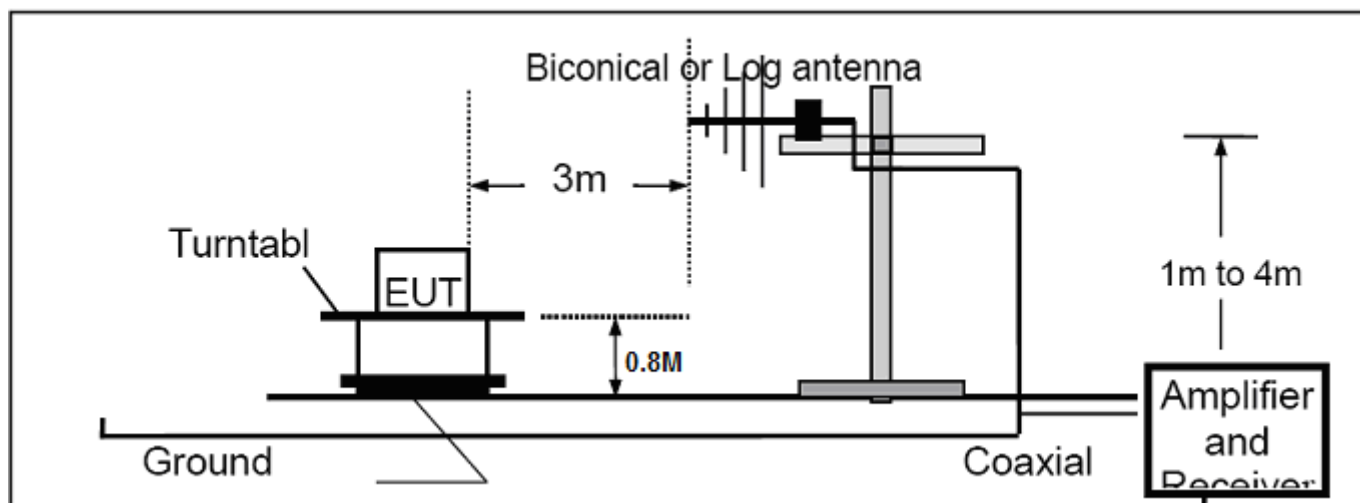
| Receiver Parameter    | Setting                        |
|-----------------------|--------------------------------|
| Start ~Stop Frequency | 9KHz~150KHz/RB 200Hz for QP    |
| Start ~Stop Frequency | 150KHz~30MHz/RB 9KHz for QP    |
| Start ~Stop Frequency | 30MHz~1000MHz/RB 120KHz for QP |

## 9.2 TEST SETUP

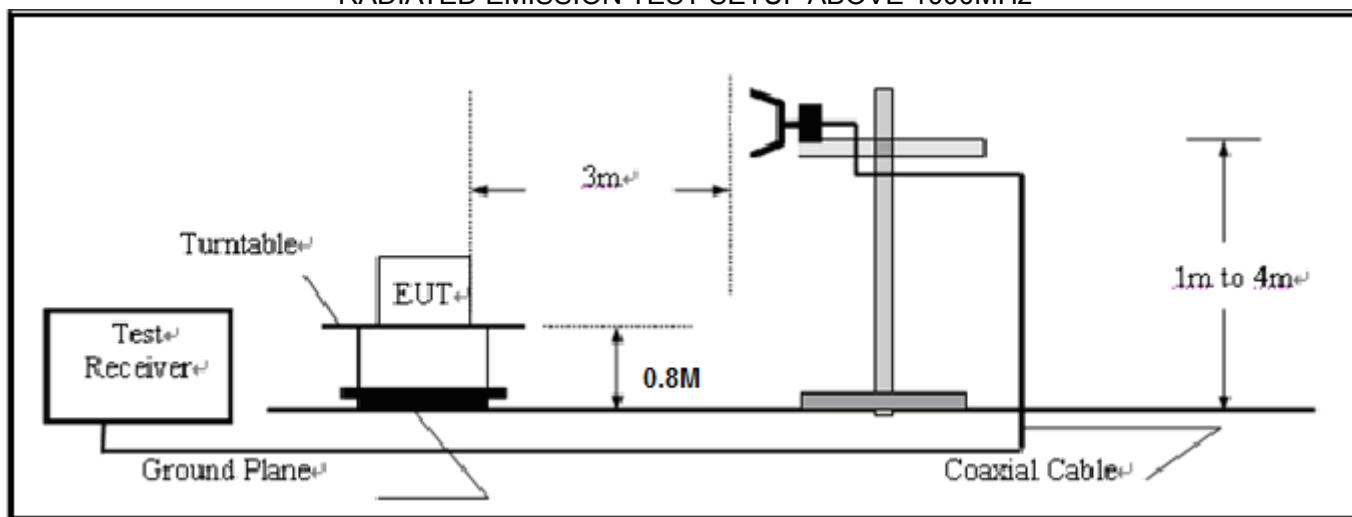
### RADIATED EMISSION TEST SETUP BELOW 30MHz



RADIATED EMISSION TEST SETUP 30MHz-1000MHz



RADIATED EMISSION TEST SETUP ABOVE 1000MHz



### 9.3 TEST EQUIPMENT LIST

| Description           | Manufacturer      | Model       | SERIAL NUMBER | Cal. Date  | Cal. Due   |
|-----------------------|-------------------|-------------|---------------|------------|------------|
| Spectrum Analyzer     | Agilent           | E4440A      | N/A           | 07/18/2012 | 07/17/2013 |
| Amplifier             | EM                | EM30180     | 0607030       | 07/18/2012 | 07/17/2013 |
| Horn Antenna          | EM                | EM-AH-10180 | N/A           | 07/18/2012 | 07/17/2013 |
| Horn Antenna          | A.H. Systems Inc. | SAS-574     | --            | 07/18/2012 | 07/17/2013 |
| EMI Test Receiver     | Rohde & Schwarz   | ESCI        | N/A           | 07/18/2012 | 07/17/2013 |
| Amplifier             | EM                | EM30180     | N/A           | 07/18/2012 | 07/17/2013 |
| Biological Antenna    | A.H. Systems Inc. | SAS-521-4   | N/A           | 07/18/2012 | 07/17/2013 |
| Loop Antenna          | Daze              | ZN30900N    | SEL0097       | 07/18/2012 | 07/17/2013 |
| Isolation Transformer | LETEAC            | LTBK        | --            | 07/18/2012 | 07/17/2013 |

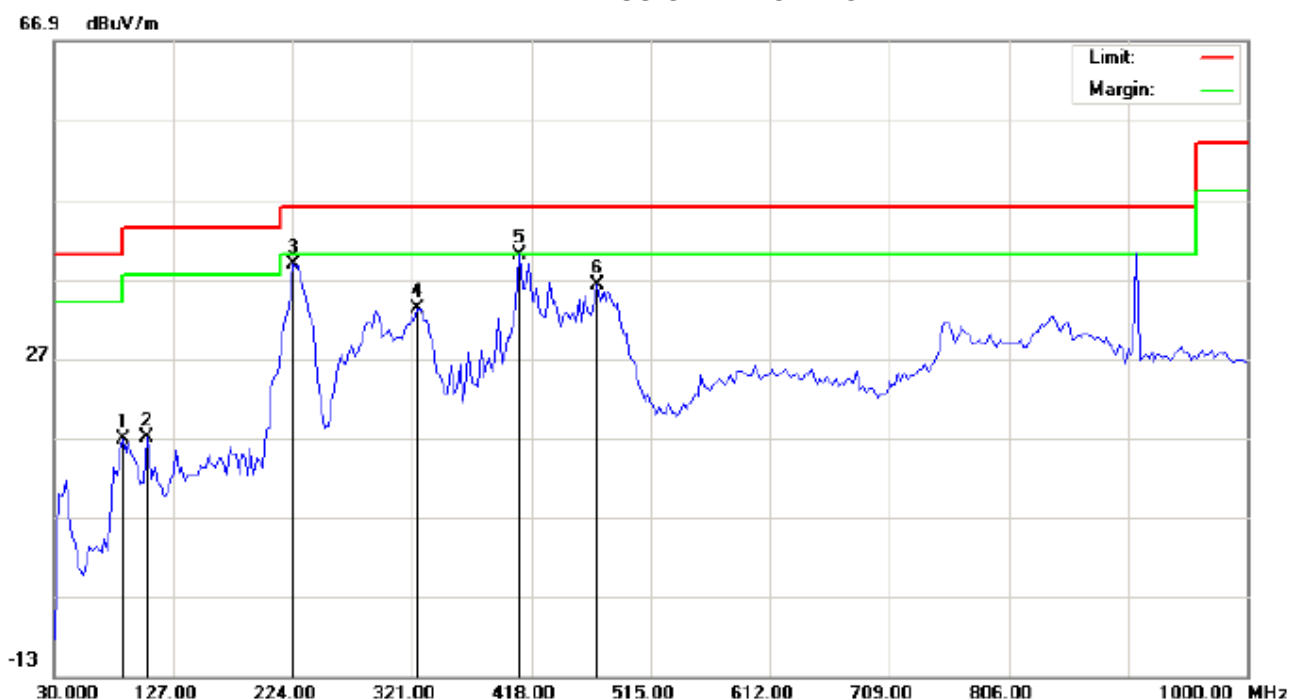
## 9.4 TEST RESULT

The worst case test result was reported as following:

### RADIATED EMISSION BELOW 30MHZ

No emission found between lowest internal used/generated frequencies to 30MHz.

### RADIATED EMISSION BELOW 1GHZ



Site: site #1

Limit: FCC Class B 3M Radiation

EUT: Bluetooth Headset

M/N: hi-Edo

Mode: Standby

Note:

Polarization: *Horizontal*

Power:

Distance: 3m

Temperature: 26

Humidity: 60 %

| No. | Mk | Freq.    | Reading | Factor | Measurement | Limit  | Over   | Detector | Antenna Height | Table Degree | Comment |
|-----|----|----------|---------|--------|-------------|--------|--------|----------|----------------|--------------|---------|
|     |    | MHz      | dBuV    | dB/m   | dBuV/m      | dBuV/m | dB     |          | cm             | degree       |         |
| 1   |    | 85.7750  | 2.38    | 14.42  | 16.80       | 40.00  | -23.20 | peak     |                |              |         |
| 2   |    | 105.1750 | 4.26    | 12.65  | 16.91       | 43.50  | -26.59 | peak     |                |              |         |
| 3   |    | 224.0000 | 26.39   | 12.48  | 38.87       | 46.00  | -7.13  | peak     |                |              |         |
| 4   |    | 325.8500 | 14.77   | 18.51  | 33.28       | 46.00  | -12.72 | peak     |                |              |         |
| 5   | *  | 408.3000 | 22.29   | 17.74  | 40.03       | 46.00  | -5.97  | peak     |                |              |         |
| 6   |    | 471.3500 | 14.65   | 21.61  | 36.26       | 46.00  | -9.74  | peak     |                |              |         |





Site: site #1

Polarization: *Vertical*

Temperature: 26

Limit: FCC Class B 3M Radiation

Power:

Humidity: 60 %

EUT: Bluetooth Headset

Distance: 3m

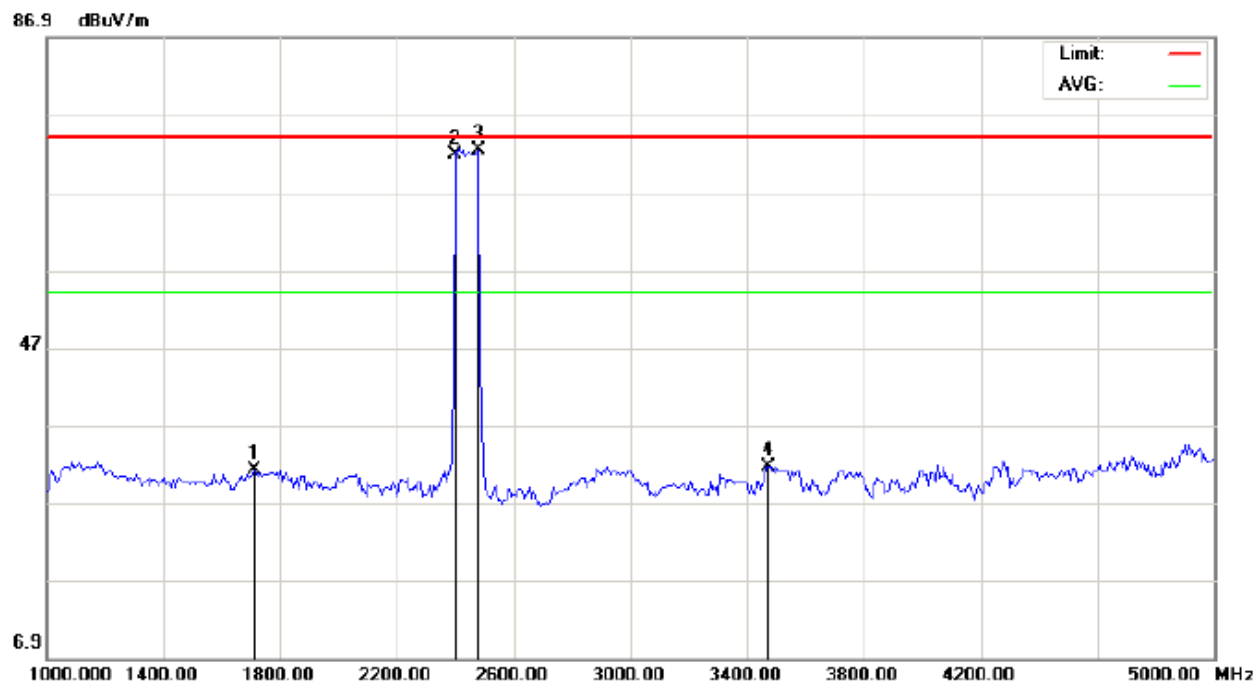
M/N: hi-Edo

Mode: Standby

Note:

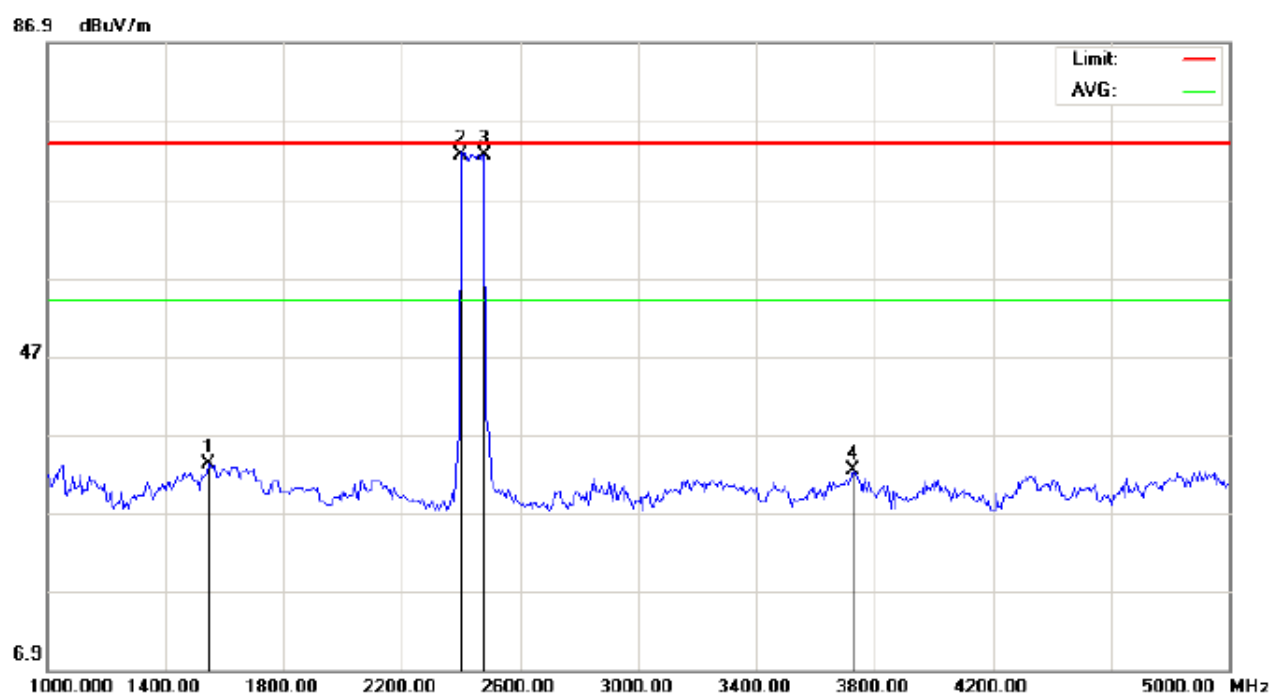
| No. | Mk | Freq.    | Reading | Factor | Measurement | Limit  | Over   | Detector | Antenna Height | Table Degree | Comment |
|-----|----|----------|---------|--------|-------------|--------|--------|----------|----------------|--------------|---------|
|     |    | MHz      | dBuV    | dB/m   | dBuV/m      | dBuV/m | dB     |          | cm             | degree       |         |
| 1   |    | 151.2500 | -0.28   | 18.55  | 18.27       | 43.50  | -25.23 | peak     |                |              |         |
| 2   |    | 228.8500 | 26.03   | 8.50   | 34.53       | 46.00  | -11.47 | peak     |                |              |         |
| 3   |    | 291.9000 | 15.55   | 17.08  | 32.63       | 46.00  | -13.37 | peak     |                |              |         |
| 4   |    | 325.8500 | 14.97   | 18.51  | 33.48       | 46.00  | -12.52 | peak     |                |              |         |
| 5   | *  | 408.3000 | 22.31   | 19.91  | 42.22       | 46.00  | -3.78  | peak     |                |              |         |
| 6   |    | 471.3500 | 14.13   | 21.61  | 35.74       | 46.00  | -10.26 | peak     |                |              |         |

RADIATED EMISSION ABOVE 1GHZ (1-10<sup>th</sup> Harmonics)



|  |                                 |                 |
|--|---------------------------------|-----------------|
| Site: site #1                                  | Polarization: <i>Horizontal</i> | Temperature: 26 |
| Limit: FCC Class B 3M Radiation above 1GHZ(PK) | Power:                          | Humidity: 60 %  |
| EUT: Bluetooth Headset                         | Distance: 3m                    |                 |
| M/N: hi-Edo                                    |                                 |                 |
| Mode: Standby                                  |                                 |                 |
| Note:  |                                 |                 |

| No. | Mk | Freq.    | Reading | Factor | Measurement | Limit  | Over   | Detector | Antenna Height | Table Degree | Comment |
|-----|----|----------|---------|--------|-------------|--------|--------|----------|----------------|--------------|---------|
|     |    | MHz      | dBuV    | dB/m   | dBuV/m      | dBuV/m | dB     |          | cm             | degree       |         |
| 1   |    | 1713.333 | 41.47   | -10.28 | 31.19       | 74.00  | -42.81 | peak     |                |              |         |
| 2   |    | 2402.000 | 80.21   | -8.39  | 71.82       | 74.00  | -2.18  | peak     |                |              |         |
| 3   | *  | 2480.000 | 80.39   | -8.08  | 72.31       | 74.00  | -1.69  | peak     |                |              |         |
| 4   |    | 3473.333 | 39.30   | -7.66  | 31.64       | 74.00  | -42.36 | peak     |                |              |         |



Site: site #1 Polarization: **Vertical** Temperature: 26  
 Limit: FCC Class B 3M Radiation above 1GHZ(PK) Power: Humidity: 60 %  
 EUT: Bluetooth Headset Distance: 3m  
 M/N: hi-Edo  
 Mode: Standby  
 Note:

| No. | Mk | Freq.    | Reading | Factor | Measurement | Limit  | Over   | Detector | Antenna Height | Table Degree | Comment |
|-----|----|----------|---------|--------|-------------|--------|--------|----------|----------------|--------------|---------|
|     |    | MHz      | dBuV    | dB/m   | dBuV/m      | dBuV/m | dB     |          | cm             | degree       |         |
| 1   |    | 1546.667 | 43.61   | -10.44 | 33.17       | 74.00  | -40.83 | peak     |                |              |         |
| 2   | *  | 2402.000 | 81.06   | -8.39  | 72.67       | 74.00  | -1.33  | peak     |                |              |         |
| 3   |    | 2480.000 | 80.65   | -8.08  | 72.57       | 74.00  | -1.43  | peak     |                |              |         |
| 4   |    | 3726.667 | 39.86   | -7.38  | 32.48       | 74.00  | -41.52 | peak     |                |              |         |

**Note:** 5~25GHz at least have 20dB margin. No recording in the test report.  
 Factor=Antenna Factor+ Cable loss-Amplifier gain, Margin=Measurement-Limit.

## 10 BAND EDGES EMISSION

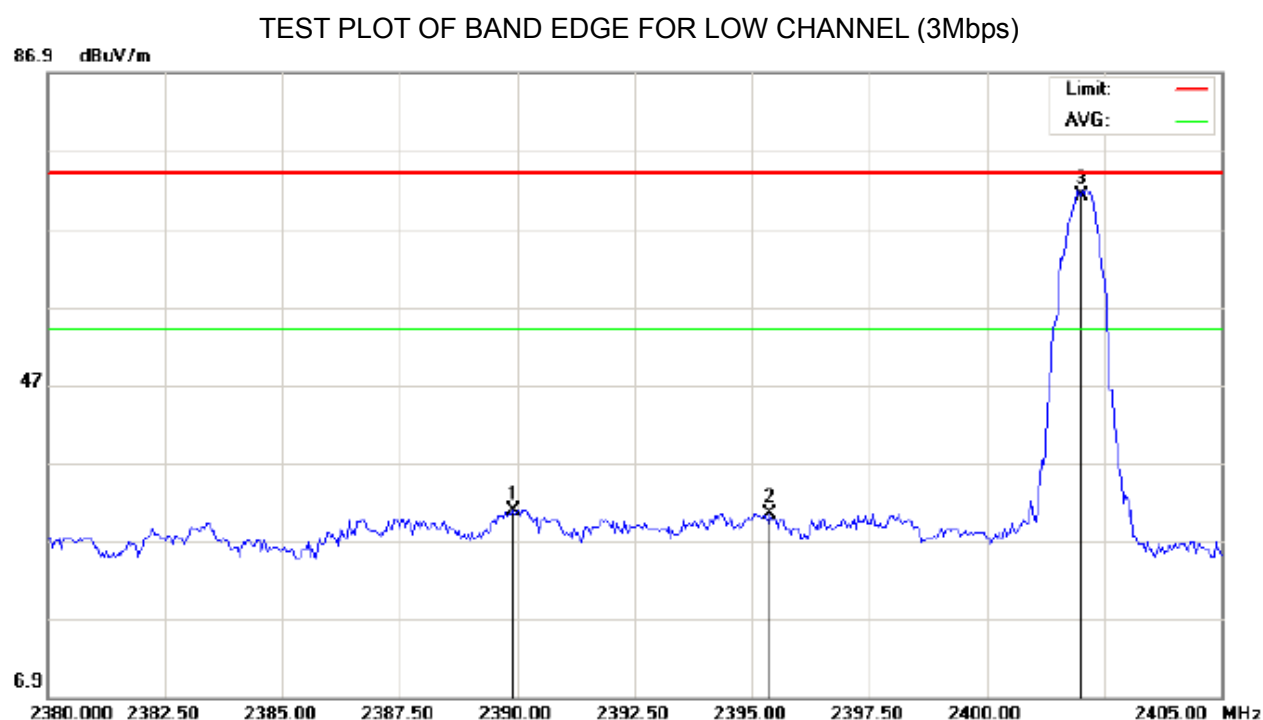
### 10.1 MEASUREMENT PROCEDURE

1. Set the EUT Work on the top, the bottom operation frequency individually.
2. Set SPA Start or Stop Frequency = Operation Frequency, RBW>=1%span, VBW>=RBW
3. The band edges was measured and recorded.

### 10.2 TEST SET-UP

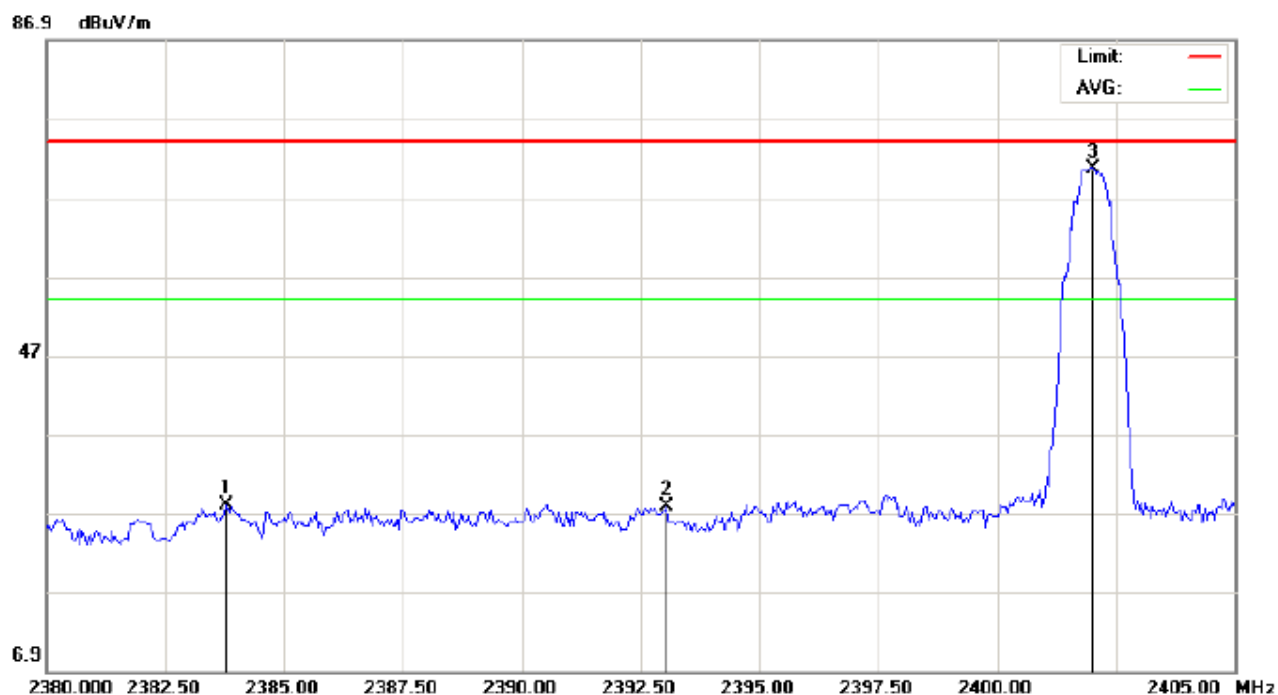
The Same as described in section 9.2

### 10.3 TEST RESULT



|  |                                 |                 |
|--|---------------------------------|-----------------|
| Site: site #1                                  | Polarization: <i>Horizontal</i> | Temperature: 26 |
| Limit: FCC Class B 3M Radiation above 1GHZ(PK) | Power:                          | Humidity: 60 %  |
| EUT: Bluetooth Headset                         | Distance: 3m                    |                 |
| M/N: hi-Edo                                    |                                 |                 |
| Mode: L-TX(3Mbps)                              |                                 |                 |
| Note:  |                                 |                 |

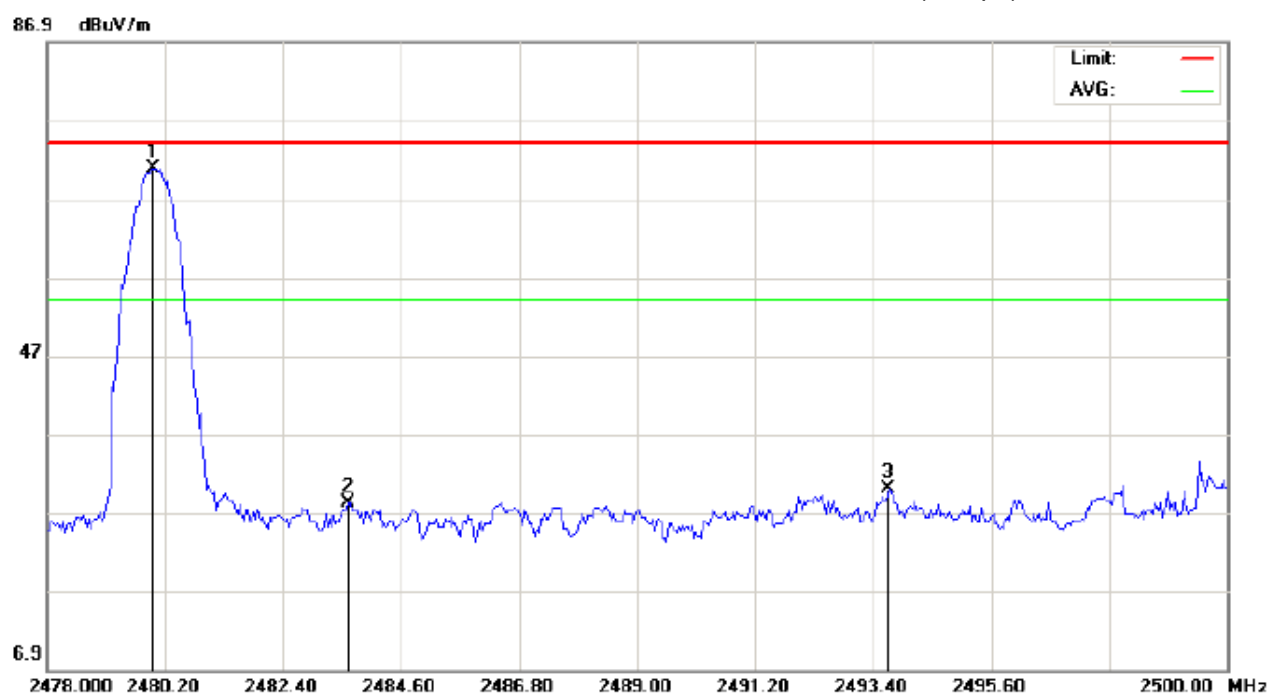
| No. | Mk | Freq.    | Reading | Factor | Measurement | Limit  | Over   | Detector | Antenna Height | Table Degree | Comment |
|-----|----|----------|---------|--------|-------------|--------|--------|----------|----------------|--------------|---------|
|     |    | MHz      | dBuV    | dB/m   | dBuV/m      | dBuV/m | dB     |          | cm             | degree       |         |
| 1   |    | 2389.917 | 39.29   | -8.44  | 30.85       | 74.00  | -43.15 | peak     |                |              |         |
| 2   |    | 2395.375 | 38.87   | -8.42  | 30.45       | 74.00  | -43.55 | peak     |                |              |         |
| 3   | *  | 2402.000 | 79.66   | -8.39  | 71.27       | 74.00  | -2.73  | peak     |                |              |         |



Site: site #1 Polarization: **Vertical** Temperature: 26  
Limit: FCC Class B 3M Radiation above 1GHZ(PK) Power: Humidity: 60 %  
EUT: Bluetooth Headset Distance: 3m  
M/N: hi-Edo  
Mode: L-TX(3Mbps)  
Note:

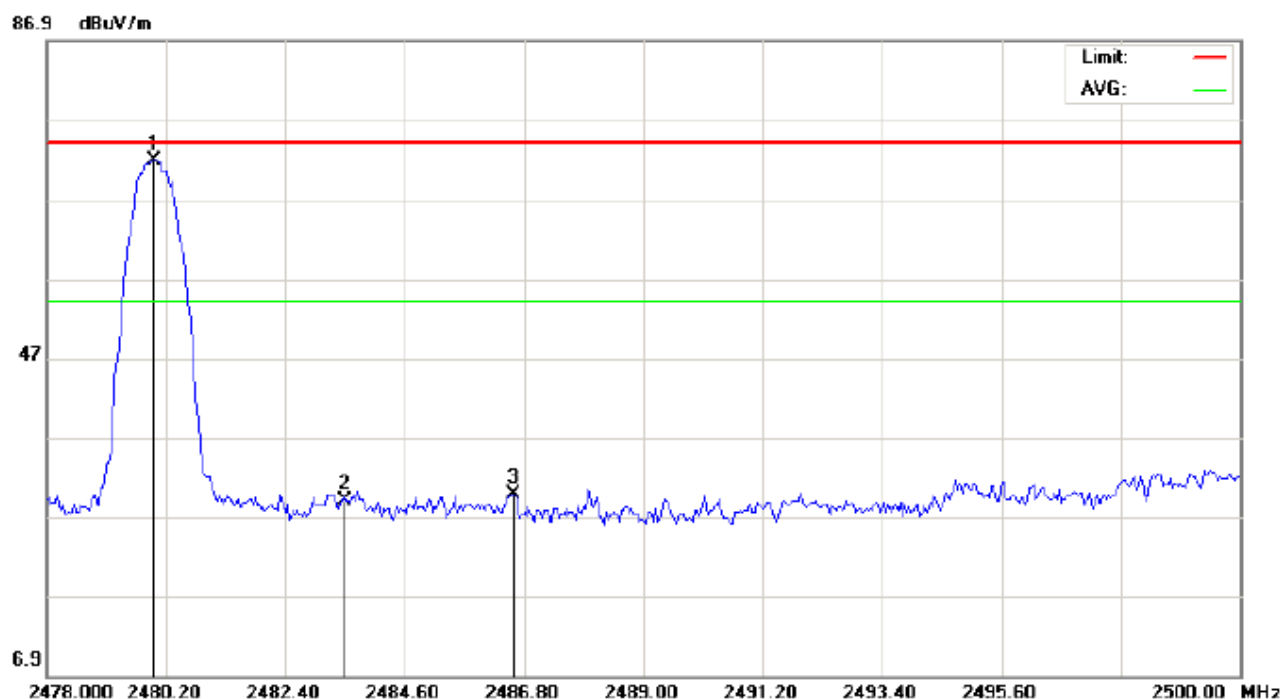
| No. | Mk | Freq.    | Reading | Factor | Measurement | Limit  | Over   | Detector | Antenna Height | Table Degree | Comment |
|-----|----|----------|---------|--------|-------------|--------|--------|----------|----------------|--------------|---------|
|     |    | MHz      | dBuV    | dB/m   | dBuV/m      | dBuV/m | dB     |          | cm             | degree       |         |
| 1   |    | 2383.792 | 36.54   | -8.46  | 28.08       | 74.00  | -45.92 | peak     |                |              |         |
| 2   |    | 2393.042 | 36.15   | -8.43  | 27.72       | 74.00  | -46.28 | peak     |                |              |         |
| 3   | *  | 2402.024 | 78.97   | -8.39  | 70.58       | 74.00  | -3.42  | peak     |                |              |         |

# TEST PLOT OF BAND EDGE FOR HIGH CHANNEL (3Mbps)



Site: site #1 Polarization: *Horizontal* Temperature: 26  
Limit: FCC Class B 3M Radiation above 1GHZ(PK) Power: Humidity: 60 %  
EUT: Bluetooth Headset Distance: 3m  
M/N: hi-Edo  
Mode: H-TX(3Mbps)  
Note:

| No. | Mk | Freq.    | Reading | Factor | Measurement | Limit  | Over   | Detector | Antenna Height | Table Degree | Comment |
|-----|----|----------|---------|--------|-------------|--------|--------|----------|----------------|--------------|---------|
|     |    | MHz      | dBuV    | dB/m   | dBuV/m      | dBuV/m | dB     |          | cm             | degree       |         |
| 1   | *  | 2479.980 | 78.87   | -8.08  | 70.79       | 74.00  | -3.21  | peak     |                |              |         |
| 2   |    | 2483.610 | 36.32   | -8.07  | 28.25       | 74.00  | -45.75 | peak     |                |              |         |
| 3   |    | 2493.693 | 37.96   | -8.03  | 29.93       | 74.00  | -44.07 | peak     |                |              |         |



Site: site #1

Polarization: **Vertical**

Temperature: 26

Limit: FCC Class B 3M Radiation above 1GHZ(PK)

Power:

Humidity: 60 %

EUT: Bluetooth Headset

Distance: 3m

M/N: hi-Edo

Mode: H-TX(3Mbps)

Note:

| No. | Mk | Freq.    | Reading | Factor | Measurement | Limit  | Over   | Detector | Antenna Height | Table Degree | Comment |
|-----|----|----------|---------|--------|-------------|--------|--------|----------|----------------|--------------|---------|
|     |    | MHz      | dBuV    | dB/m   | dBuV/m      | dBuV/m | dB     |          | cm             | degree       |         |
| 1   | *  | 2479.980 | 79.88   | -8.08  | 71.80       | 74.00  | -2.20  | peak     |                |              |         |
| 2   |    | 2483.513 | 37.10   | -8.07  | 29.03       | 74.00  | -44.97 | peak     |                |              |         |
| 3   |    | 2486.617 | 37.79   | -8.05  | 29.74       | 74.00  | -44.26 | peak     |                |              |         |

## 11. NUMBER OF HOPPING FREQUENCY

### 11.1 MEASUREMENT PROCEDURE

1. Place the EUT on the table and set it in transmitting mode.
2. Remove the antenna from the EUT and then connect a low RF cable from the antenna port to the spectrum analyzer.
3. Set the spectrum analyzer Start = 2.4GHz Stop = 2.4835GHz
4. Set the Spectrum Analyzer as RBW>=1%span, VBW>=RBW.

### 11.2 TEST SETUP (BLOCK DIAGRAM OF CONFIGURATION)

Same as described in section 5.2  
Conducted Method.

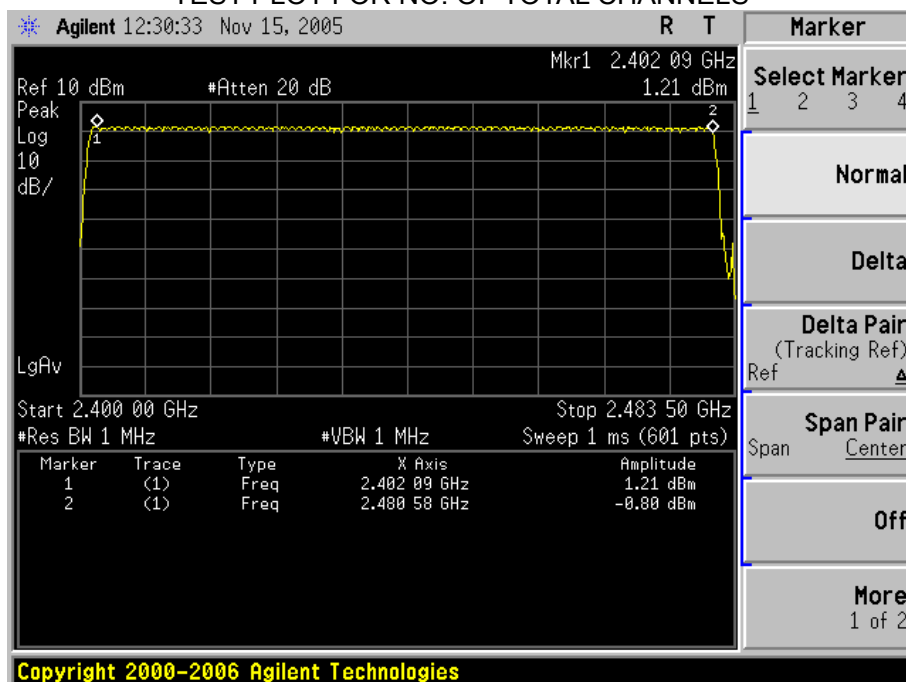
### 11.3 MEASUREMENT EQUIPMENT USED

The Same as described in section 5.3

### 11.4 LIMITS AND MEASUREMENT RESULT

| TOTAL NO. OF HOPPING CHANNEL | LIMIT (NO. OF CH) | MEASUREMENT (NO. OF CH) | RESULT |
|------------------------------|-------------------|-------------------------|--------|
|                              | >=15              | 79                      | PASS   |

TEST PLOT FOR NO. OF TOTAL CHANNELS





## 12 TIME OF OCCUPANCY (DWELL TIME)

### 12.1 MEASUREMENT PROCEDURE

1. Place the EUT on the table and set it in transmitting mode
2. Remove the antenna from the EUT and then connect a low RF cable from the antenna port to the spectrum analyzer
3. Set Span = zero span, centered on a hopping channel
4. Set the spectrum analyzer as RBW=1MHz, VBW>=RBW, Span = 0 Hz,.

### 12.2 TEST SETUP (BLOCK DIAGRAM OF CONFIGURATION)

Same as described in section 5.2  
Conducted Method

### 12.3 MEASUREMENT EQUIPMENT USED

The same as described in section 5.3

### 12.4 LIMITS AND MEASUREMENT RESULT

**Bluetooth 3Mbps Test Result**

| Channel | Time of Pulse for DH5 (ms) | Period Time (s) | Sweep Time (ms) | Limit (ms) |
|---------|----------------------------|-----------------|-----------------|------------|
| Low     | 2.888                      | 31.6            | 308.05          | 400        |
| Middle  | 2.884                      | 31.6            | 307.63          | 400        |
| High    | 2.89                       | 31.6            | 308.27          | 400        |

Low Channel Time

$$2.888 \times (1600/6) / 79 \times 31.6 = 308.05 \text{ms}$$

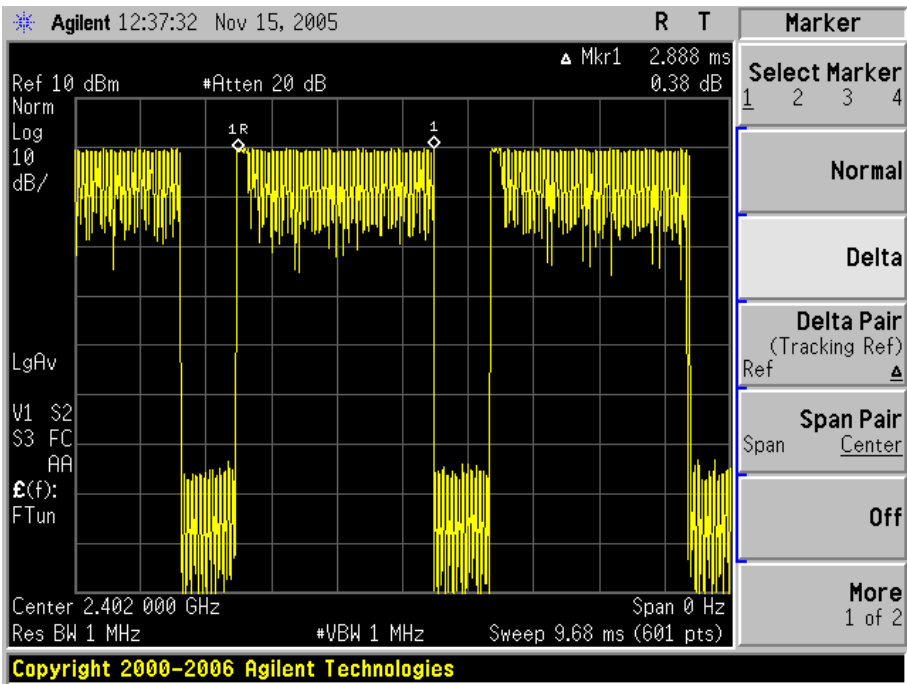
Middle Channel Time

$$2.884 \times (1600/6) / 79 \times 31.6 = 307.63 \text{ms}$$

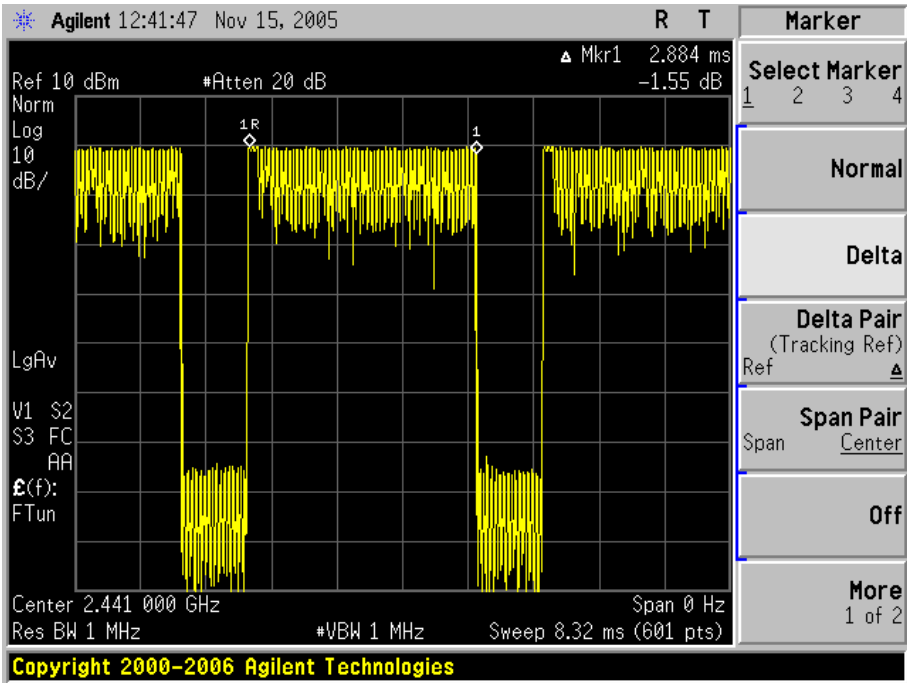
High Channel Time

$$2.89 \times (1600/6) / 79 \times 31.6 = 308.27 \text{ms}$$

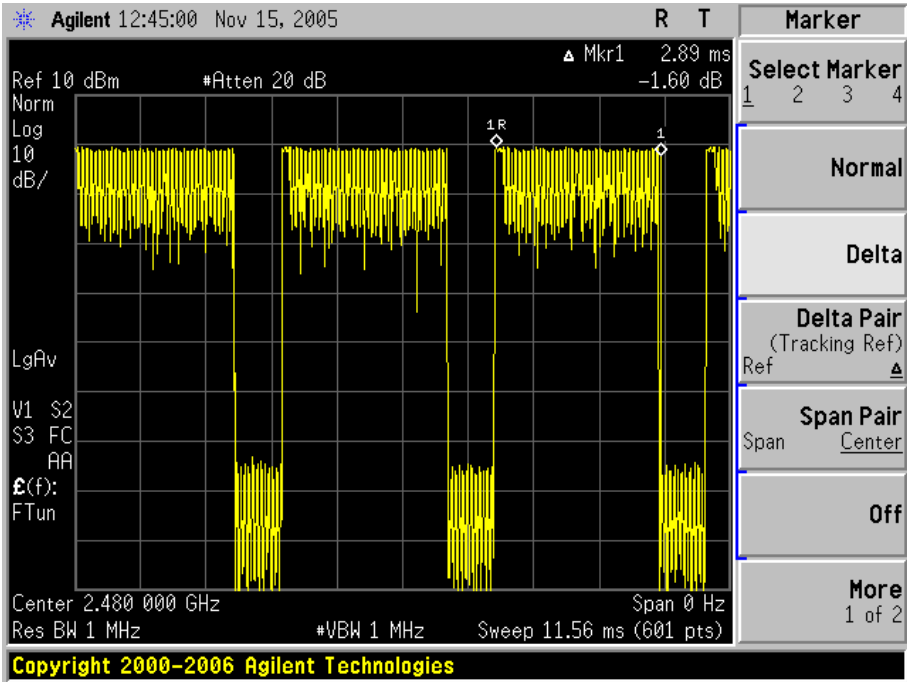
TEST PLOT OF LOW CHANNEL



TEST PLOT OF MIDDLE CHANNEL



TEST PLOT OF HIGH CHANNEL



### 13. FREQUENCY SEPARATION

#### 13.1 MEASUREMENT PROCEDURE

1. Place the EUT on the table and set it in transmitting mode
2. Remove the antenna from the EUT and then connect a low RF cable from the antenna port to the spectrum analyzer
3. Set Span = wide enough to capture the peaks of two adjacent channels Resolution (or IF) Bandwidth (RBW)  $\geq 1\%$  of the span Video (or Average) Bandwidth (VBW)  $\geq$  RBW; Sweep = auto; Detector function = peak; Trace = max hold

#### 13.2 TEST SETUP (BLOCK DIAGRAM OF CONFIGURATION)

Same as described in section 5.2

#### 13.3 MEASUREMENT EQUIPMENT USED

The same as described in section 5.3

#### 13.4 LIMITS AND MEASUREMENT RESULT

BLUETOOTH 3MBPS TEST RESULT

| CHANNEL   | CHANNEL SEPARATION | LIMIT                         | RESULT |
|-----------|--------------------|-------------------------------|--------|
|           | KHz                | KHz                           |        |
| CH00-CH01 | 1000               | $\geq 25$ KHz or 2/3 20 dB BW | Pass   |

TEST PLOT FOR FREQUENCY SEPARATION



**APPENDIX I**  
**PHOTOGRAPHS OF THE EUT**  
**PART VIEW-1 OF EUT**



**PART VIEW-2 OF EUT**



PART VIEW-3 OF EUT



PART VIEW-4 OF EUT



PART VIEW-5 OF EUT



PART VIEW-6 OF EUT

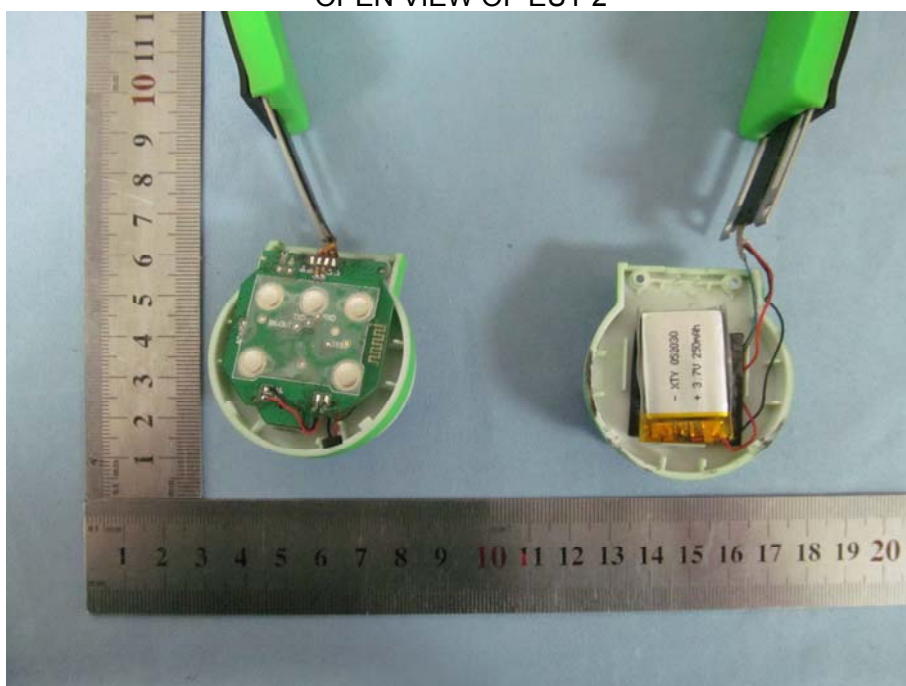




OPEN VIEW OF EUT-1

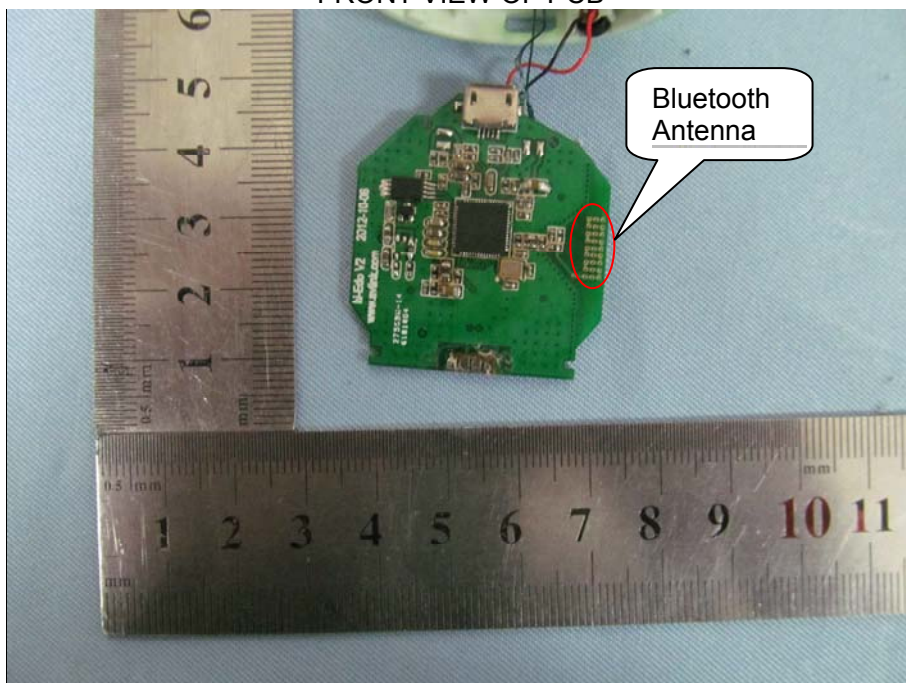


OPEN VIEW OF EUT-2

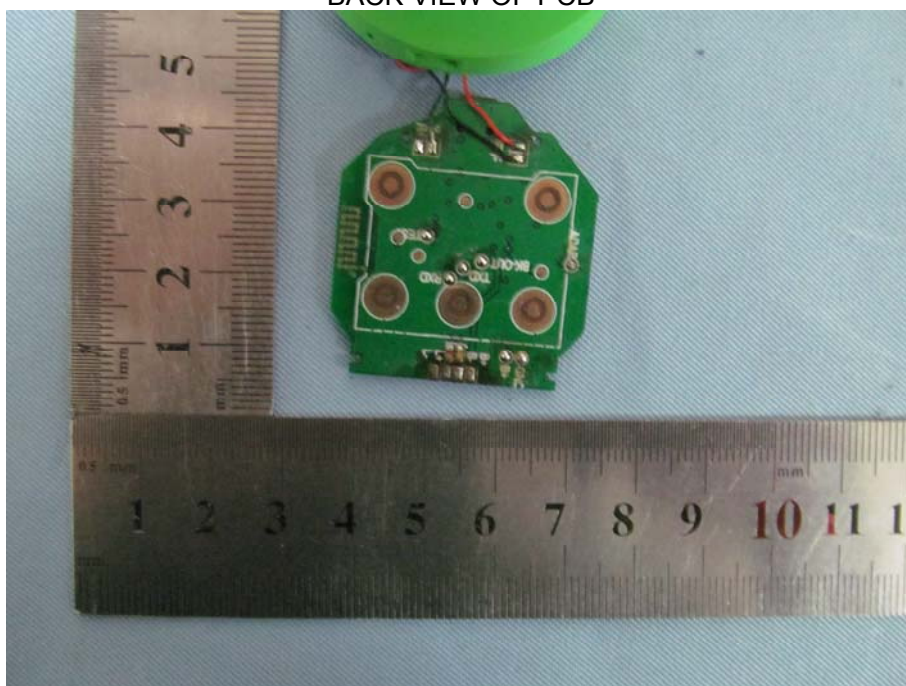




FRONT VIEW OF PCB



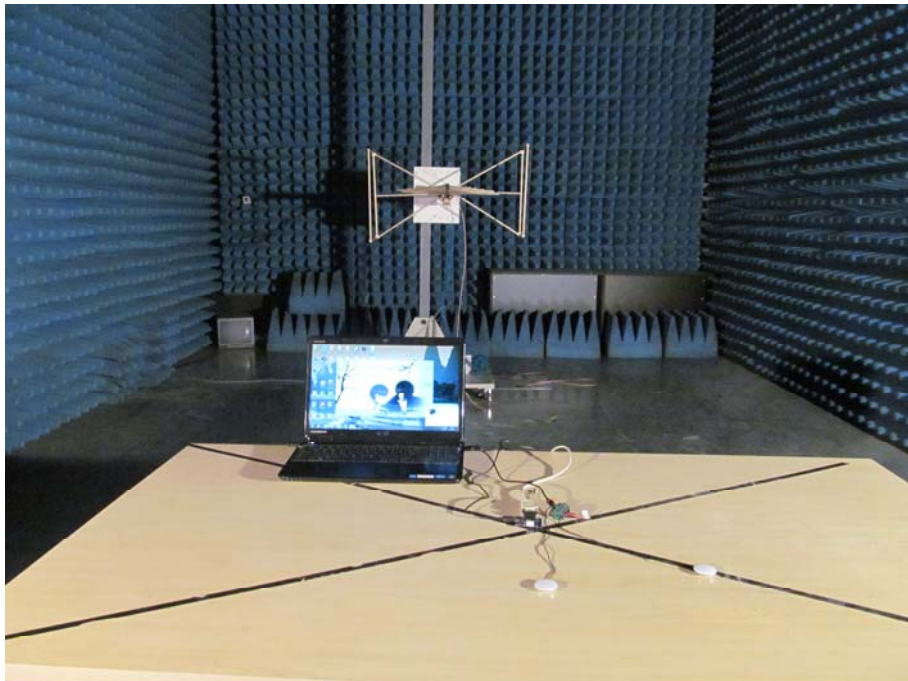
BACK VIEW OF PCB



**APPENDIX II**  
**PHOTOGRAPHS OF THE TEST SETUP**  
**CONDUCTED EMISSION TEST**



**RADIATED SPURIOUS EMISSION**



**----END OF REPORT----**