



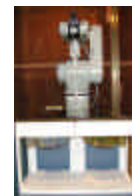
PCTEST ENGINEERING LABORATORY, INC.

6660 – B Dobbin Road · Columbia, MD 21045 · USA

Telephone 410.290.6652 / Fax 410.290.6654

<http://www.pctestlab.com> (email: randy@pctestlab.com)

CERTIFICATE OF COMPLIANCE (SAR EVALUATION)



APPLICANT NAME & ADDRESS:

FLARION TECHNOLOGIES, INC.
135 Route 202/206 South
Bedminster, NJ 07921

DATE & LOCATION OF TESTING:

Dates of Tests: April 27, 2005
Test Report S/N: 0502250144
Test Site: PCTEST Lab, Columbia MD

FCC ID:

QZX99171001

APPLICANT NAME:

FLARION TECHNOLOGIES, INC.

EUT Type:

PCMCIA Wireless Network Card

Tx Frequency:

710.96 MHz – 715.05 MHz (OFDM)

Rx Frequency:

740.96 MHz – 745.05 MHz (OFDM)

Max. RF Output Power:

0.308 W ERP OFDM (24.883 dBm) / 24.0 dBm Conducted

Max. SAR Measurement:

0.24 W/kg OFDM Body SAR

Trade Name/Model(s):

FPC-1000

FCC Rule Part(s):

§2.1093; FCC/OET Bulletin 65 Supplement C [July 2001]

Application Type:

Certification

Test Device Serial No.:

Identical Prototype [S/N: #870018]

This wireless portable device has been shown to be capable of compliance for localized specific absorption rate (SAR) for uncontrolled environment/general population exposure limits specified in ANSI/IEEE Std. C95.1-1992 and had been tested in accordance with the measurement procedures specified in FCC/OET Bulletin 65 Supplement C (2001) and IEEE Std. 1528 – 2003.

I attest to the accuracy of data. All measurements reported herein were performed by me or were made under my supervision and are correct to the best of my knowledge and belief. I assume full responsibility for the completeness of these measurements and vouch for the qualifications of all persons taking them.

Grant Conditions: Output power is ERP. SAR compliance has been established in the notebook computer(s) with PCMCIA slot configuration(s) as tested in this filing, and applies for use in notebook computers with substantially similar physical dimensions, construction, and electrical and RF characteristics. SAR compliance has also been established in IBM ThinkPad R30 Series notebook with PCMCIA slot configuration as tested in this filing. Use with other notebook computer(s) is not allowed. Compliance of this device in all final host configurations is the responsibility of the Grantee. End-users must be provided with specific information required to satisfy RF exposure compliance for all final host devices. The antenna(s) used for this transmitter must not be co-located or operating in conjunction with any other antenna or transmitter with a host device.

PCTEST certifies that no party to this application has been denied the FCC benefits pursuant to Section 5301 of the Anti-Drug Abuse Act of 1988, 21 U.S.C. 862.


Randy Ortanez
President





PCTEST SAR TEST REPORT	 FCC CERTIFICATION			Reviewed by: Quality Manager
SAR Filename: 0502250144	Test Dates: April 27, 2005	Phone Type: PCMCIA Wireless Network Card	FCC ID: QZX99171001	Page 1 of 19

TABLE OF CONTENTS

1. INTRODUCTION / SAR DEFINITION.....	3
2. SAR MEASUREMENT SETUP.....	4
3. ALIDX-500 E-FIELD PROBE SYSTEM.....	5
4. PROBE CALIBRATION PROCESS.....	6
5. PHANTOM & EQUIVALENT TISSUES.....	7
6. TEST SYSTEM SPECIFICATIONS.....	8
7. DOSIMETRIC ASSESSMENT & PHANTOM SPECS.....	9
8. DEFINITION OF REFERENCE POINTS.....	10
9. TEST CONFIGURATION POSITION.....	11
10. ANSI/IEEE C95.1 - 1992 RF EXPOSURE LIMITS.....	12
11. MEASUREMENT UNCERTAINTIES.....	13
12. SAR TEST DATA SUMMARY.....	14
13. SAR TEST EQUIPMENT.....	15
14. CONCLUSION.....	16
15. REFERENCES.....	17
EXHIBIT A. SYSTEM VERIFICATION.....	18-19

PCTEST SAR TEST REPORT		 FCC CERTIFICATION		Reviewed by: Quality Manager
SAR Filename: 0502250144	Test Dates: April 27, 2005	Phone Type: PCMCIA Wireless Network Card	FCC ID: QZX99171001	Page 2 of 19

1. INTRODUCTION / SAR DEFINITION

The FCC has adopted the guidelines for evaluating the environmental effects of radiofrequency radiation in ET Docket 93-62 on Aug. 6, 1996 to protect the public and workers from the potential hazards of RF emissions due to FCC-regulated portable devices.[1]

The safety limits used for the environmental evaluation measurements are based on the criteria published by the American National Standards Institute (ANSI) for localized specific absorption rate (SAR) in *IEEE/ANSI C95.1-1992 Standard for Safety Levels with Respect to Human Exposure to Radio Frequency Electromagnetic Fields, 3 kHz to 300 GHz*. (c) 1992 by the Institute of Electrical and Electronics Engineers, Inc., New York, New York 10017.[2] The measurement procedure described in *IEEE/ANSI C95.3-1992 Recommended Practice for the Measurement of Potentially Hazardous Electromagnetic Fields - RF and Microwave*[3] is used for guidance in measuring SAR due to the RF radiation exposure from the Equipment Under Test (EUT). These criteria for SAR evaluation are similar to those recommended by the National Council on Radiation Protection and Measurements (NCRP) in *Biological Effects and Exposure Criteria for Radiofrequency Electromagnetic Fields*, NCRP Report No. 86 (c) NCRP, 1986, Bethesda, MD 20814.[6] SAR is a measure of the rate of energy absorption due to exposure to an RF transmitting source. SAR values have been related to threshold levels for potential biological hazards.

SAR Definition

Specific Absorption Rate (SAR) is defined as the time derivative (rate) of the incremental energy (dU) absorbed by (dissipated in) an incremental mass (dm) contained in a volume element (dV) of a given density (ρ). It is also defined as the rate of RF energy absorption per unit mass at a point in an absorbing body (see Fig. 1.1).

$$SAR = \frac{d}{dt} \left(\frac{dU}{dm} \right) = \frac{d}{dt} \left(\frac{dU}{\rho dV} \right)$$

Figure 1.1
SAR Mathematical Equation


SAR is expressed in units of Watts per Kilogram (W/kg).

$$SAR = \frac{\sigma E^2}{\rho}$$

where:

- σ = conductivity of the tissue-simulant material (S/m)
- ρ = mass density of the tissue-simulant material (kg/m³)
- E = Total RMS electric field strength (V/m)

NOTE: The primary factors that control rate of energy absorption were found to be the wavelength of the incident field in relations to the dimensions and geometry of the irradiated organism, the orientation of the organism in relation to the polarity of field vectors, the presence of reflecting surfaces, and whether conductive contact is made by the organism with a ground plane.[6]

PCTEST® SAR TEST REPORT	 FCC CERTIFICATION			Reviewed by: Quality Manager
SAR Filename: 0502250144	Test Dates: April 27, 2005	Phone Type: PCMCIA Wireless Network Card	FCC ID: QZX99171001	Page 3 of 19

2. SAR MEASUREMENT SETUP

Robotic System

Measurements are performed using the ALIDX-500 automated dosimetric assessment system. The ALIDX-500 is made by IDX Robotics, Inc. (IDX) in the United States and consists of high precision robotics system (CRS), robot controller, Pentium 4 computer, near-field probe, probe alignment sensor, and the Left and Right SAM phantoms containing the head/brain equivalent tissue, and the flat phantoms for body/muscle equivalent. The robot is a six-axis industrial robot performing precise movements to position the probe to the location (points) of maximum electromagnetic field (EMF) (see Fig. 2.1).

System Hardware

The Robot table consists of the power supply, robot controller, safety computer, teach pendant (Joystick), six-axis robot arm, and the probe. The cell controller consists of DELL Dimension 4300 Pentium-4 1.6 GHz computer with Windows 2000 system and SAR Measurement software, National Instruments analog card, monitor, keyboard, and mouse. The robot controller is connected to the cell controller to communicate between the two computers. The probe data is connected to the cell controller via data acquisition cables.

System Electronics

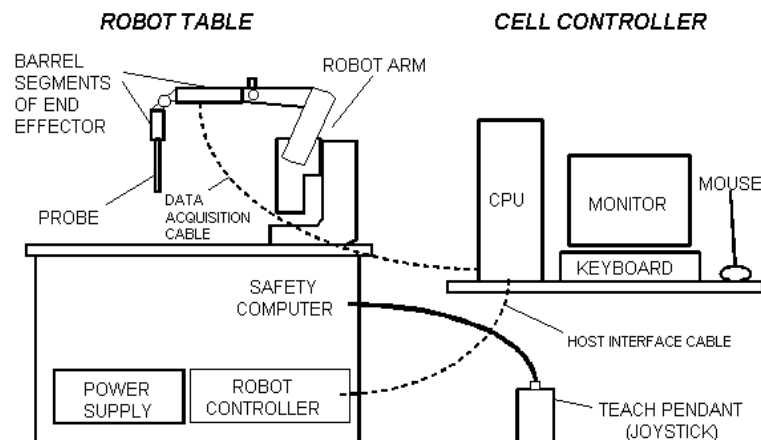


Figure 2.1
SAR Measurement System Setup

When the Robot is in the home position, the Y-axis of the coordinate system parallels the line of intersection between the tabletop and the long axis of the Robot's Large Shoulder. The Teach Pendant may be used to establish the X,Y coordinate directions by depressing the 0-X and 0-Y MOTOR/AXIS switches while in axis mode.

The robot is first taught to position the probe sensor following a specific pattern of points. In the first sweep the sensor enclosure touches the inside of the phantom head. The SAR is measured on a defined grid of points that are concentrated on the surface of the head closest to the antenna of the transmitting device (EUT).

PCTEST SAR TEST REPORT	FCC CERTIFICATION			Reviewed by: Quality Manager
SAR Filename: 0502250144	Test Dates: April 27, 2005	Phone Type: PCMCIA Wireless Network Card	FCC ID: QZX99171001	Page 4 of 19

3. ALIDX-500 E-FIELD PROBE SYSTEM

Probe Measurement System



Fig 3.1
IDX System

The near-field probe is an implantable isotropic E-field probe that measures the voltages proportional to the $|E|^2$ (electric) or $|H|^2$ (magnetic) fields. The probe is enclosed in a hollow glass protective cylinder 9-mm. outer diameter, 0.5 mm. thickness and 30 cm. in length. The E-probe contains three electrically small array of orthogonal dipoles strategically placed to provide greater accuracy and to compensate for near-field spatial gradients. The probe contains diodes that are placed over the gap of the dipoles to improve RF detection. The electrical signal detected by each diode is amplified by three DC amplifiers and are contained in a shielded container in the robot end effector so its performance is not affected by the presence of incident electromagnetic fields (see Fig. 3.1).

Probe Specifications

Frequency Range:	10 kHz – 6.0 GHz
Calibration:	In air from 10 MHz to 6.0 GHz In brain and muscle simulating tissue at Frequencies from 835 up to 5800MHz
Sensitivity:	3.5 mV/mW/cm ² (air – typical)
DC Resistance:	300 kohm
Isotropic Response:	0.25 dB
Dynamic Range:	10 mW/kg – 100 W/kg
Resistance to Pull:	25 N
Probe Length:	290 mm
Probe Tip Material:	Glass
Probe Tip Length:	40 mm
Probe Tip Diameter:	7 ± 0.2 mm
Application:	SAR Dosimetry Testing HAC (Hearing Aid Compatibility) Compliance tests of mobile phones



Figure 3.2
Triangular Probe Configuration

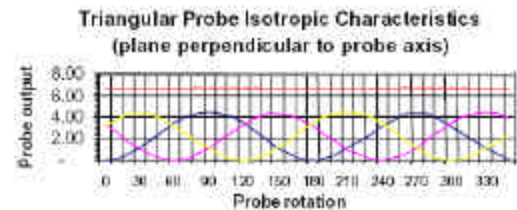


Figure 3.3
Probe Characteristics

PCTEST SAR TEST REPORT	FCC CERTIFICATION			Reviewed by: Quality Manager
SAR Filename: 0502250144	Test Dates: April 27, 2005	Phone Type: PCMCIA Wireless Network Card	FCC ID: QZX99171001	Page 5 of 19

4. PROBE CALIBRATION PROCESS

Dosimetric Assessment Procedure

Each E-Probe/Probe amplifier combination has unique calibration parameters. A TEM calibration procedure is conducted to determine the proper amplifier settings to enter in the probe parameters. The amplifier settings are determined for a given frequency by subjecting the Probe to a known E-field density (1mW/cm²) using an RF Signal generator, TEM cell, and RF Power Meter. The SAR measurement software is used for Probe calibration.

Free Space Assessment

The free space E-field from amplified probe outputs is determined in a test chamber. This calibration can be performed in a TEM cell if the frequency is below 1 GHz and in a waveguide or some other methodologies above 1 GHz for free space. For the free space calibration, we place the probe in the volumetric center of the cavity and at the proper orientation with the field. We then rotate the probe 360 degrees until the three channels show the maximum reading. The power density readings equates to 1mW/cm².

Temperature Assessment

E-field temperature correlation calibration is performed in a flat phantom filled with the appropriate simulated brain tissue. The measured free space E-field in the medium correlates to temperature rise in a dielectric medium. For temperature correlation calibration a RF transparent thermistor-based temperature probe is used in conjunction with the E-field probe.

$$SAR = C \frac{\Delta T}{\Delta t}$$

where:

Δt = exposure time (30 seconds),

C = heat capacity of tissue (brain or muscle),

ΔT = temperature increase due to RF exposure.

SAR is proportional to $\Delta T / \Delta t$, the initial rate of tissue heating, before thermal diffusion takes place. Now it's possible to quantify the electric field in the simulated tissue by equating the thermally derived SAR to the E - field;

$$SAR = \frac{|E|^2 \cdot s}{r}$$

where:

σ = simulated tissue conductivity,

ρ = Tissue density (1.25 g/cm³ for brain tissue)

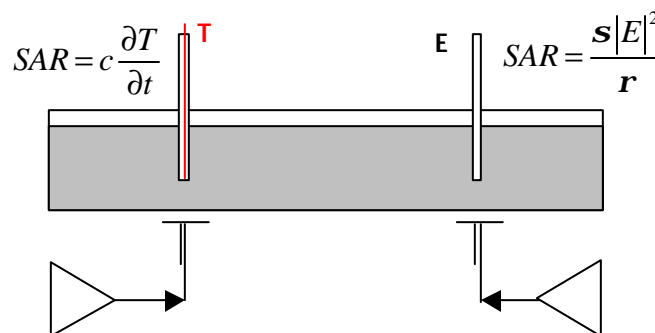



Figure 4.1 Temperature Assessment Test Configuration

PCTEST SAR TEST REPORT	 FCC CERTIFICATION			Reviewed by: Quality Manager
SAR Filename: 0502250144	Test Dates: April 27, 2005	Phone Type: PCMCIA Wireless Network Card	FCC ID: QZX99171001	Page 6 of 19

5. PHANTOM & EQUIVALENT TISSUES



Figure 5.1
SAM Phantoms

The Left and Right SAM Phantoms are constructed of a vivac composite integrated in a corian stand. The shape of the shell is based on data from an anatomical study designed to determine the maximum exposure in at least 90% of all users [7][8]. It enables the dosimetric evaluation of left and right hand phone usage as well as body mounted usage at the flat phantom region. A cover prevents the evaporation of the liquid. Reference markings on the Phantom allow the complete setup of all predefined phantom positions and measurement grids by manually teaching three points in the robot. (see Fig. 5.1)

Brain & Muscle Simulating Mixture Characterization



Figure 5.2
Head Simulated
Tissue

The brain and muscle mixtures consist of a viscous gel using hydroxyethylcellulose (HEC) gelling agent and saline solution (see Table 6.1). Preservation with a bactericide is added and visual inspection is made to make sure air bubbles are not trapped during the mixing process. The mixture is calibrated to obtain proper dielectric constant (permittivity) and conductivity of the desired tissue. The head tissue dielectric parameters recommended by the IEEE SCC-34/SC-2 have been incorporated in the following table. Other head and body tissue parameters that have not been specified in P1528 are derived from the tissue dielectric parameters computed from the 4-Cole-Cole equations. The mixture characterizations used for the brain and muscle tissue simulating liquids are according to the data by C. Gabriel and G. Hartsgrrove [9].(see Table 5.1)

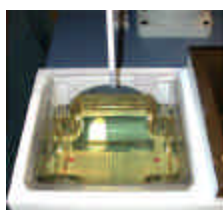


Figure 5.3
Body/Muscle
Simulated Tissue

Ingredients (% by weight)	Frequency (MHz)									
	450		815		915		1900		2450	
Tissue Type	Head	Body	Head	Body	Head	Body	Head	Body	Head	Body
Water	38.56	51.16	41.45	52.4	41.05	56.0	54.9	49.4	62.7	73.2
Salt (NaCl)	3.95	1.49	1.45	1.4	1.35	0.76	0.18	0.5	0.5	0.04
Sugar	56.32	46.78	56.0	45.0	56.5	41.76	0.0	58.0	0.0	0.0
HEC	0.98	0.52	1.0	1.0	1.0	1.21	0.0	1.0	0.0	0.0
Bactericide	0.19	0.05	0.1	0.1	0.1	0.27	0.0	0.1	0.0	0.0
Triton X-100	0.0	0.0	0.0	0.0	0.0	0.0	0.0	0.0	36.8	0.0
DGBE	0.0	0.0	0.0	0.0	0.0	0.0	44.92	0.0	0.0	26.7

Salt: 99 % Pure Sodium Chloride Sugar: 98 % Pure Sucrose
 Water: De-ionized, 16 MΩ resistivity HEC: Hydroxyethyl Cellulose
 DGBE: 99 % Diethylene glycol butyl ether, [2-(2-butoxyethoxy)ethanol]
 Triton X-100 (ultra pure): Polyethylene glycol mono [4-(1,1,3,3-tetramethylbutyl)phenyl] ether

Table 5.1

Composition of the Brain & Muscle Tissue Equivalent Matter

Device Holder



Figure 5.4
Device Positioner

In combination with the SAM Phantom, the EUT Holder (see Fig. 6.2) enables the rotation of the mounted transmitter in spherical coordinates whereby the rotation point is the ear opening. Device positioning is accurate and repeatable according to the FCC and CENELEC specifications. The device holder can be locked at different phantom locations (left head, right head, flat phantom).

* Note: A simulating human hand is not used due to the complex anatomical and geometrical structure of the hand that may produce infinite number of configurations [8]. To produce the worst-case condition (the hand absorbs antenna output power), the hand is omitted during the tests.

PCTEST SAR TEST REPORT	FCC CERTIFICATION			Reviewed by: Quality Manager
SAR Filename: 0502250144	Test Dates: April 27, 2005	Phone Type: PCMCIA Wireless Network Card	FCC ID: QZX99171001	Page 7 of 19

6. TEST SYSTEM SPECIFICATIONS

Automated Test System Specifications

Positioner

Robot: CRS Robotics, Inc. Robot Model: F3
Repeatability: ± 0.05 mm (0.002 in.)
No. Of axes: 6

Data Acquisition Electronic (DAE) System

Cell Controller

Processor: Pentium 4
Clock Speed: 1.6 GHz
Operating System: Windows 2000™ Professional
Data Card: NI DAQ Card (in CPU)

Data Converter

Software: IDX Flexware
Connecting Lines: Data Acquisition Cable
 RS-232 Host Interface Cable
Sampling Rate: 6000 samples/sec



Figure 6.1
ALIDX-500 Test System

E-Field Probes

Model: E-020 S/N: PCT005
Construction: Triangular core absolute encoder system
Frequency: 10 MHz to 6.0 GHz

Phantom

Phantom: SAM Phantoms (Left & Right)
Shell Material: Vivac Composite
Thickness: 2.0 ± 0.2 mm

PCTEST SAR TEST REPORT		PCTEST FCC CERTIFICATION		Reviewed by: Quality Manager
SAR Filename: 0502250144	Test Dates: April 27, 2005	Phone Type: PCMCIA Wireless Network Card	FCC ID: QZX99171001	Page 8 of 19

7. DOSIMETRIC ASSESSMENT & PHANTOM SPECS

Measurement Procedure

The measurement procedure consists of the process parameters, probe parameters, EUT product data, and measurement scans (teach points). The measurement procedure is a set of predefined points to be scanned and measured by the probe, DC amplified and processed by the cell controller. The corresponding voltages determined by the electric and magnetic fields are extrapolated to determine peak SAR value.

The SAR Measurement System measures field strength by employing two different types of systematic measurement scans; a coarse scan and a fine scan. Coarse and fine scans measure field strength in a rectangular area within the XY plane (a plane parallel to the top of the Robot Table). The measurement area is divided into a grid of small squares defined by equally spaced grid lines. During an actual measurement process, the probe moves along grid lines systematically recording the field strength at grid line intersections. Typically, after a coarse scan is completed, a fine scan is conducted at the peak field strength value (hot spot) that was measured in the coarse scan. The fine scan has a greater resolution (smaller grid squares) than the coarse scan, and covers only a fraction of the measurement area in the coarse scan.

Deviation from measurement procedure - None

Specific Anthropomorphic Mannequin (SAM) Specifications

The phantom for handset SAR assessment testing is a low-loss dielectric shell, with shape and dimensions derived from the anthropometric data of the 90th percentile adult male head dimensions as tabulated by the US Army. The SAM Phantom shell is bisected along the mid-sagittal plane into right and left halves (see Fig. 7.1). The perimeter sidewalls of each phantom halves are extended to allow filling with liquid to a depth that is sufficient to minimized reflections from the upper surface. The liquid depth is maintained at a minimum depth of 15cm to minimize reflections from the upper surface. The SAM shell thickness is 2.0 ± 0.2 mm.



Figure 7.1
Left and Right SAM Phantom shells

PCTEST SAR TEST REPORT		FCC CERTIFICATION		Reviewed by: Quality Manager
SAR Filename: 0502250144	Test Dates: April 27, 2005	Phone Type: PCMCIA Wireless Network Card	FCC ID: QZX99171001	Page 9 of 19

8. DEFINITION OF REFERENCE POINTS

EAR Reference Point (ERP)

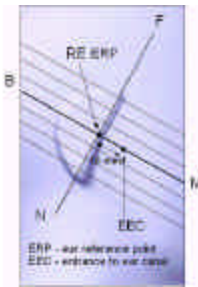


Figure 8.2 Close-up side view of ERPs

Figure 8.1 shows the front, back and side views of the SAM Twin Phantom. The point "M" is the reference point for the center of the mouth, "LE" is the left ear reference point (ERP), and "RE" is the right ERP. The ERPs are 15mm posterior to the entrance to the ear canal (EEC) along the B-M line (Back-Mouth), as shown in Figure 9.2. The plane passing through the two ear canals and M is defined as the Reference Plane. The line N-F (Neck-Front) is perpendicular to the reference plane and passing through the RE (or LE) is called the Reference Pivoting Line (see Figure 8.2). Line B-M is perpendicular to the N-F line. Both N-F and B-M lines are marked on the external phantom shell to facilitate handset positioning [5].



Figure 8.1 Front, back and side view of SAM Twin Phantom

Handset Reference Points

Two imaginary lines on the handset were established: the vertical centerline and the horizontal line. The test device was placed in a normal operating position with the "test device reference point" located along the "vertical centerline" on the front of the device aligned to the "ear reference point" (See Fig. 8.3). The "test device reference point" was then located at the same level as the center of the ear reference point. The test device was positioned so that the "vertical centerline" was bisecting the front surface of the handset at it's top and bottom edges, positioning the "ear reference point" on the outer surface of the both the left and right head phantoms on the ear reference point.

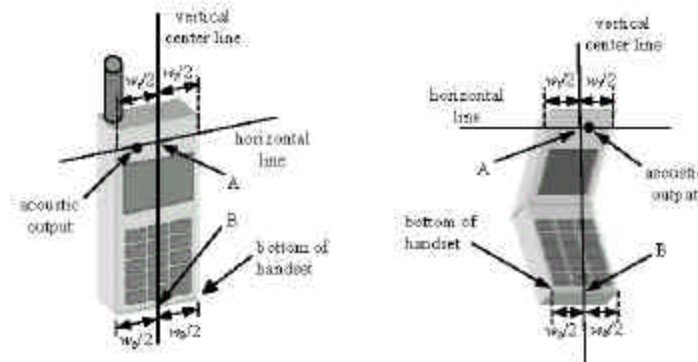



Figure 8.3 Handset Vertical Center & Horizontal Line Reference Points

PCTEST SAR TEST REPORT	 FCC CERTIFICATION			Reviewed by: Quality Manager
SAR Filename: 0502250144	Test Dates: April 27, 2005	Phone Type: PCMCIA Wireless Network Card	FCC ID: QZX99171001	Page 10 of 19

9. TEST CONFIGURATION POSITION

Body Holster /Belt Clip Configurations

Body-worn operating configurations are tested with the belt-clips and holsters attached to the device and positioned against a flat phantom in a normal use configuration (see Figure 9.1). A device with a headset output is tested with a headset connected to the device. Body dielectric parameters are used.

Accessories for Body-worn operation configurations are divided into two categories: those that do not contain metallic components and those that do contain metallic components. When multiple accessories that do not contain metallic components are supplied with the device, the device is tested with only the accessory that dictates the closest spacing to the body. Then multiple accessories that contain metallic components are supplied with the device, the device is tested with each accessory that contains a unique metallic component. If multiple accessories share an identical metallic component (i.e. the same metallic belt-clip used with different holsters with no other metallic components) only the accessory that dictates the closest spacing to the body is tested.



Figure 9.1 Body Belt Clip & Holster Configurations

Body-worn accessories may not always be supplied or available as options for some devices intended to be authorized for body-worn use. In this case, a test configuration where a separation distance between the back of the device and the flat phantom is used. All test position spacings are documented.

Transmitters that are designed to operate in front of a person's face, as in push-to-talk configurations, are tested for SAR compliance with the front of the device positioned to face the flat phantom. For devices that are carried next to the body such as a shoulder, waist or chest-worn transmitters, SAR compliance is tested with the accessory(ies), including headsets and microphones, attached to the device and positioned against a flat phantom in a normal use configuration.

In all cases SAR measurements are performed to investigate the worst-case positioning. Worst-case positioning is then documented and used to perform Body SAR testing.

In order for users to be aware of the body-worn operating requirements for meeting RF exposure compliance, operating instructions and cautions statements must be included in the user's manual.

PCTEST SAR TEST REPORT		FCC CERTIFICATION		Reviewed by: Quality Manager
SAR Filename: 0502250144	Test Dates: April 27, 2005	Phone Type: PCMCIA Wireless Network Card	FCC ID: QZX99171001	Page 11 of 19

10. ANSI/IEEE C95.1 - 1992 RF EXPOSURE LIMITS

Uncontrolled Environment

UNCONTROLLED ENVIRONMENTS are defined as locations where there is the exposure of individuals who have no knowledge or control of their exposure. The general population/uncontrolled exposure limits are applicable to situations in which the general public may be exposed or in which persons who are exposed as a consequence of their employment may not be made fully aware of the potential for exposure or cannot exercise control over their exposure. Members of the general public would come under this category when exposure is not employment-related; for example, in the case of a wireless transmitter that exposes persons in its vicinity.

Controlled Environment

CONTROLLED ENVIRONMENTS are defined as locations where there is exposure that may be incurred by persons who are aware of the potential for exposure, (i.e. as a result of employment or occupation). In general, occupational/controlled exposure limits are applicable to situations in which persons are exposed as a consequence of their employment, who have been made fully aware of the potential for exposure and can exercise control over their exposure. This exposure category is also applicable when the exposure is of a transient nature due to incidental passage through a location where the exposure levels may be higher than the general population/uncontrolled limits, but the exposed person is fully aware of the potential for exposure and can exercise control over his or her exposure by leaving the area or by some other appropriate means.

Table 10.1. Safety Limits for Partial Body Exposure [2]

	HUMAN EXPOSURE LIMITS	
	UNCONTROLLED ENVIRONMENT General Population (W/kg) or (mW/g)	CONTROLLED ENVIRONMENT General Population (W/kg) or (mW/g)
SPATIAL PEAK SAR 1 Brain	1.60	8.00
SPATIAL AVERAGE SAR 2 Whole Body	0.08	0.40
SPATIAL PEAK SAR 3 Hands, Feet, Ankles, Wrists	4.00	20.00

1 The Spatial Peak value of the SAR averaged over any 1 gram of tissue (defined as a tissue volume in the shape of a cube) and over the appropriate averaging time.

2 The Spatial Average value of the SAR averaged over the whole body.


3 The Spatial Peak value of the SAR averaged over any 10 grams of tissue (defined as a tissue volume in the shape of a cube) and over the appropriate averaging time.

PCTEST SAR TEST REPORT		FCC CERTIFICATION		Reviewed by:
SAR Filename: 0502250144	Test Dates: April 27, 2005	Phone Type: PCMCIA Wireless Network Card	FCC ID: QZX99171001	Quality Manager
				Page 12 of 19

11. MEASUREMENT UNCERTAINTIES

a	b	c	d	e = f(d,k)	f	g	h = cxf/e	i = cxg/e	k
Uncertainty Component	Sec.	Tol. (± %)	Prob. Dist.	Div.	c_i (1 - g)	c_i (10 - g)	1 - g u_i (± %)	10 - g u_i (± %)	v_i
Measurement System									
Probe Calibration	E1.1	11.4	N	$\sqrt{3}$	1	1	6.6	6.6	∞
Axial Isotropy	E1.2	3.4	R	$\sqrt{3}$	0.7	0.7	1.4	1.4	∞
Hemishperical Isotropy	E1.2	5.2	R	$\sqrt{3}$	1	1	3.0	3.0	∞
Boundary Effect	E1.3	4.7	R	$\sqrt{3}$	1	1	2.7	2.7	∞
Linearity	E1.4	5.9	R	$\sqrt{3}$	1	1	3.4	3.4	∞
System Detection Limits	E1.5	1.0	R	$\sqrt{3}$	1	1	0.6	0.6	∞
Readout Electronics	E1.6	1.0	R	1	1	1	1.0	1.0	∞
Response Time	E1.7	0.8	R	$\sqrt{3}$	1	1	0.5	0.5	∞
Integration Time	E1.8	1.7	R	$\sqrt{3}$	1	1	1.0	1.0	∞
RF Ambient Conditions	E5.1	1.2	R	$\sqrt{3}$	1	1	0.7	0.7	∞
Probe Positioner Mechanical Tolerance	E5.2	0.4	R	$\sqrt{3}$	1	1	0.2	0.2	∞
Probe Positioning w/ respect to Phantom Shell	E5.3	2.9	R	$\sqrt{3}$	1	1	1.7	1.7	∞
Extrapolation, Interpolation & Integration Algorithms for Max. SAR Evaluation	E4.2	3.9	R	$\sqrt{3}$	1	1	2.3	2.3	∞
Test Sample Related									
Test Sample Positioning	E3.2.1	10.6	R	$\sqrt{3}$	1	1	6.1	6.1	11
Device Holder Uncertainty	E3.1.1	8.7	R	$\sqrt{3}$	1	1	5.0	5.0	8
Output Power Variation - SAR drift measurement	5.6.2	5.0	R	$\sqrt{3}$	1	1	2.9	2.9	∞
Phantom & Tissue Parameters									
Phantom Uncertainty (Shape & Thickness tolerances)	E2.1	4.0	R	$\sqrt{3}$	1	1	2.3	2.3	∞
Liquid Conductivity - deviation from target values	E2.2	5.0	R	$\sqrt{3}$	0.7	0.5	2.0	1.4	∞
Liquid Conductivity - measurement uncertainty	E2.2	5.0	R	$\sqrt{3}$	0.7	0.5	2.0	1.4	∞
Liquid Permittivity - deviation from target values	E2.2	5.0	R	$\sqrt{3}$	0.6	0.5	1.7	1.4	∞
Liquid Permittivity - measurement uncertainty	E2.2	5.0	R	$\sqrt{3}$	0.6	0.5	1.7	1.4	∞
Combined Standard Uncertainty (k=1)			RSS				13.2	13.0	
Expanded Uncertainty (k=2) (95% CONFIDENCE LEVEL)							26.6	26.2	

The above measurement uncertainties are according to IEEE Std. 1528 - 2003

PCTEST® SAR TEST REPORT	 FCC CERTIFICATION			Reviewed by: Quality Manager
SAR Filename: 0502250144	Test Dates: April 27, 2005	Phone Type: PCMCIA Wireless Network Card	FCC ID: QZX99171001	Page 13 of 19

12. SAR TEST DATA SUMMARY

Procedures Used To Establish Test Signal

The PCMCIA Wireless Network Card was placed into simulated call mode (OFDM mode) using manufacturers test codes. Such test signals offer a consistent means for testing SAR and are recommended for evaluating SAR [4]. When test modes are not available or inappropriate for testing a handset, the actual transmission is activated through a base station simulator or similar equipment. See data pages for actual procedure used in measurement.

Device Test Conditions

The PCMCIA Card is powered through the host computer. In order to verify that the device was tested at full power, conducted output power measurements were performed before and after each SAR measurement to confirm the output power accordingly. If a power deviation of more than 5% occurred, the test was repeated.

Portable Host Computer(s)

IBM ThinkPad R30 Series
S/N: AK-VB8N2

PCTEST SAR TEST REPORT		FCC CERTIFICATION		Reviewed by:
SAR Filename:	Test Dates:	Phone Type:	FCC ID:	Quality Manager
0502250144	April 27, 2005	Wireless Network Card	QZX99171001	Page 14 of 19

13. SAR TEST EQUIPMENT

Equipment Calibration

Table 13.1 Test Equipment Calibration

EQUIPMENT SPECIFICATIONS		
Type	Calibration Date	Serial Number
CRS Robot F3	February 2005	RAF0134133
CRS C500C Motion Controller	February 2005	RCB0003303
CRS Teach Pendant (Joystick)	February 2005	STP0132231
DELL Computer, Pentium 4 1.6 GHz, Windows 2000™	February 2005	4PJZ111
E-Field Probe E-020	January 2005	PCT005
Right Ear SAM Phantom (P-SAM-R)	February 2005	94X-113
Left Ear SAM Phantom (P-SAM-L)	February 2005	94X-019
Flat SAM Phantom (P-SAM-FLAT)	February 2005	94X-097
IDX Robot End Effector (EE-103-C)	February 2005	07111223
IDX Probe Amplifier	February 2005	07111113
Validation Dipole D-835S	April 2005	PCT640
Validation Dipole D-1900S	April 2005	PCT641
Brain Equivalent Matter (835MHz)	April 2005	PCTBEM101
Brain Equivalent Matter (1900MHz)	April 2005	PCTBEM301
Muscle Equivalent Matter (835MHz)	April 2005	PCTMEM201
Muscle Equivalent Matter (1900MHz)	April 2005	PCTMEM401
Amplifier Research 5S1G4 Power Amp	January 2005	PCT540
Agilent E8241A (250kHz ~ 20GHz) Signal Generator	November 2004	US42110432
HP-8753E (30kHz ~ 6GHz) Network Analyzer	January 2005	PCT552
HP85070B Dielectric Probe Kit	January 2005	PCT501
Ambient Noise/Reflection, etc.	<12mW/kg/<3%of SAR	January 2005
		Anechoic Room PCT01

NOTE:


Dipole Validation measurement was performed by PCTEST Lab before each test. The brain simulating material is calibrated by PCTEST using the dielectric probe system and network analyzer to determine the conductivity and permittivity (dielectric constant) of the brain-equivalent material.

PCTEST SAR TEST REPORT		FCC CERTIFICATION		Reviewed by:
SAR Filename: 0502250144	Test Dates: April 27, 2005	Phone Type: PCMCIA Wireless Network Card	FCC ID: QZX99171001	Quality Manager
				Page 15 of 19

14. CONCLUSION

Measurement Conclusion

The SAR measurement indicates that the EUT complies with the RF radiation exposure limits of the FCC. These measurements are taken to simulate the RF effects exposure under worst-case conditions. Precise laboratory measures were taken to assure repeatability of the tests. The tested device complies with the requirements in respect to all parameters subject to the test. The test results and statements relate only to the item(s) tested. Please note that the absorption and distribution of electromagnetic energy in the body are very complex phenomena that depend on the mass, shape, and size of the body, the orientation of the body with respect to the field vectors, and the electrical properties of both the body and the environment. Other variables that may play a substantial role in possible biological effects are those that characterize the environment (e.g. ambient temperature, air velocity, relative humidity, and body insulation) and those that characterize the individual (e.g. age, gender, activity level, debilitation, or disease). Because innumerable factors may interact to determine the specific biological outcome of an exposure to electromagnetic fields, any protection guide shall consider maximal amplification of biological effects as a result of field-body interactions, environmental conditions, and physiological variables.[3]

PCTEST® SAR TEST REPORT		 FCC CERTIFICATION		Reviewed by: Quality Manager
SAR Filename: 0502250144	Test Dates: April 27, 2005	Phone Type: PCMCIA Wireless Network Card	FCC ID: QZX99171001	Page 16 of 19

15. REFERENCES

- [1] Federal Communications Commission, ET Docket 93-62, Guidelines for Evaluating the Environmental Effects of Radiofrequency Radiation, Aug. 1996.
- [2] ANSI/IEEE C95.1 - 1991, *American National Standard safety levels with respect to human exposure to radio frequency electromagnetic fields, 300kHz to 100GHz*, New York: IEEE, Aug. 1992.
- [3] ANSI/IEEE C95.3 - 1991, *IEEE Recommended Practice for the Measurement of Potentially Hazardous Electromagnetic Fields - RF and Microwave*, New York: IEEE, 1992.
- [4] Federal Communications Commission, OET Bulletin 65 (Edition 97-01), Supplement C (Edition 01-01), *Evaluating Compliance with FCC Guidelines for Human Exposure to Radiofrequency Electromagnetic Fields*, July 2001.
- [5] IEEE Standards Coordinating Committee 34 – IEEE Std. 1528- 2003, *Recommended Practice for Determining the Peak Spatial-Average Specific Absorption Rate (SAR) in the Human Body Due to Wireless Communications Devices*
- [6] NCRP, National Council on Radiation Protection and Measurements, *Biological Effects and Exposure Criteria for RadioFrequency Electromagnetic Fields*, NCRP Report No. 86, 1986. Reprinted Feb. 1995.
- [7] V. Hombach, K. Meier, M. Burkhardt, E. Kuhn, N. Kuster, *The Dependence of EM Energy Absorption upon Human Head Modeling at 900 MHz*, IEEE Transaction on Microwave Theory and Techniques, vol. 44 no. 10, Oct. 1996, pp. 1865-1873.
- [8] N. Kuster and Q. Balzano, *Energy absorption mechanism by biological bodies in the near field of dipole antennas above 300MHz*, IEEE Transaction on Vehicular Technology, vol. 41, no. 1, Feb. 1992, pp. 17-23.
- [9] G. Hartsgrove, A. Kraszewski, A. Surowiec, *Simulated Biological Materials for Electromagnetic Radiation Absorption Studies*, University of Ottawa, Bioelectromagnetics, Canada: 1987, pp. 29-36.
- [10] Q. Balzano, O. Garay, T. Manning Jr., *Electromagnetic Energy Exposure of Simulated Users of Portable Cellular Telephones*, IEEE Transactions on Vehicular Technology, vol. 44, no.3, Aug. 1995.
- [11] W.H. Press, S.A. Teukolsky, W.T. Vetterling, and B.P. Flannery, *Numerical Recipes in C*, The Art of Scientific Computing, Second edition, Cambridge University Press, 1992.
- [12] Federal Communications Commission, OET Bulletin 65, Evaluating Compliance with FCC Guidelines for Human Exposure to Radiofrequency Electromagnetic Fields. Supplement C, Dec. 1997.
- [13] CENELEC CLC/SC111B, European Prestandard (prENV 50166-2), Human Exposure to Electromagnetic Fields High-frequency: 10kHz-300GHz, Jan. 1995.


PCTEST® SAR TEST REPORT		 FCC CERTIFICATION		Reviewed by: Quality Manager
SAR Filename: 0502250144	Test Dates: April 27, 2005	Phone Type: PCMCIA Wireless Network Card	FCC ID: QZX99171001	Page 17 of 19

EXHIBIT A. SYSTEM VERIFICATION

Tissue Verification

Table A.1 Simulated Tissue Verification

April 11, 2005	835MHz Brain		835MHz Muscle	
	Target	Measured	Target	Measured
Dielectric Constant	41.50	42.38	55.20	54.82
Conductivity	0.90	0.89	0.97	0.98

Test System Validation

Prior to assessment, the system is verified to the $\pm 10\%$ of the specifications at 835 MHz by using the system validation kits. (Graphic Plots Attached)

Table A.2 System Validation

System Verification TARGET & MEASURED							
Date:	Amb. Temp (°C)	Liquid Temp(°C)	Input Power (W)	Tissue Frequency (Mhz)	Targeted SAR _{1g} (mW)	Measured SAR _{1g} (mW)	Deviation (%)
4/27/2005	22.2	21.1	0.160	835	1.5	1.66	6.90%



Figure A.0 Dipole Validation Test Setup


PCTEST SAR TEST REPORT	 FCC CERTIFICATION			Reviewed by: Quality Manager
SAR Filename: 0502250144	Test Dates: April 27, 2005	Phone Type: PCMCIA Wireless Network Card	FCC ID: QZX99171001	Page 18 of 19

EXHIBIT A. SAR DATA SUMMARY

Mixture Type: 835MHz Muscle

A.1 MEASUREMENT RESULTS (Body SAR)

FREQUENCY		Modulation	POWER [†]		Test Position	Separation Distance (cm) ^{††}	Antenna Position	SAR (W/kg)
MHz	Ch.		Conducted	Battery				
710.96	19	OFDM	24 dBm	Standard	Body	0.0	Fixed	0.24
715.05	101	OFDM	24 dBm	Standard	Body	0.0	Fixed	0.23
ANSI / IEEE C95.1 1992 - SAFETY LIMIT Spatial Peak Uncontrolled Exposure/General Population						Muscle 1.6 W/kg (mW/g) averaged over 1 gram		

NOTES:

- The test data reported are the worst-case SAR value with the antenna-head position set in a typical configuration. Test procedures used are according to FCC/OET Bulletin 65, Supp.C [July 2001].
- All modes of operation were investigated, and worst-case results are reported.
- Battery is fully charged for all readings. *Standard Batteries are the only options.*
[†]Power Measured ☒ Conducted ☐ ERP ☐ EIRP
 See Test Plots for Power Class Reference
- SAR Measurement System ☐ DASY3 ☒ IDX
 Phantom Configuration ☐ Left Head ☒ Flat Phantom ☐ Right Head
- SAR Configuration ☐ Head ☒ Body ☐ Hand
- Test Signal Call Mode ☐ Manu. Test Codes ☒ Base Station Simulator
- ^{††}Test Configuration ☐ With Belt Clip ☒ Without Belt Clip
- Tissue parameters and temperatures are listed on the SAR plots.
- Both sides of the phone were tested and the worst-case side is reported.
- Liquid tissue depth is 15.1 cm. ± 0.1



Alfred Cirwithian
Vice President Engineering

PCTEST SAR TEST REPORT		FCC CERTIFICATION		Reviewed by:
SAR Filename: 0502250144	Test Dates: April 27, 2005	Phone Type: PCMCIA Wireless Network Card	FCC ID: QZX99171001	Quality Manager
				Page 19 of 19

APPENDIX A: SAR TEST DATA

SAR Data Report 05042701

Start : 27-Apr-05 09:38:06 am
End : 27-Apr-05 09:48:25 am
Code Version : 4.08
Robot Version: 4.08

Product Data:

Type : Flarion
Model Number : FPC-1000
Serial Number : 1
Frequency : 710 MHz
Transmit Pwr : 0.25 W
Antenna Type : External
Antenna Posn. : Fixed

Measurement Data:

Phantom Name : FLATPHANTOM
Phantom Type : Uniphantom
Tissue Type : Muscle
Tissue Dielectric : 54.820
Tissue Conductivity : 0.980
Tissue Density : 1.000
Robot Name : CRS

Probe Data:

Probe Name : PCT005
Probe Type : E Fld Triangle
Frequency : 835 MHz
Tissue Type : Muscle
Calibrated Dielectric : 53.660
Calibrated Conductivity : 0.980
Calibrated Density : 1.000
Probe Offset : 1.600 mm
Conversion Factor : 5.850
Probe Sensitivity : 3.807 3.736 3.821 mV/(mW/cm^2)
Amplifier Gains : 20.00 20.00 20.00

Sample:

Rate: 6000 Samples/Sec
Count: 1000 Samples
NIDAQ Gain: 5

Comments:

710.96MHz Ch. 19
Body (Lap) SAR
CF=1; Amb. Temp= 22.2 'C; Liq. Temp=21.1 'C

Power Drop Test:

Reading @ start = 0.163
Reading @ End = 0.162
Power at End = 99.5%

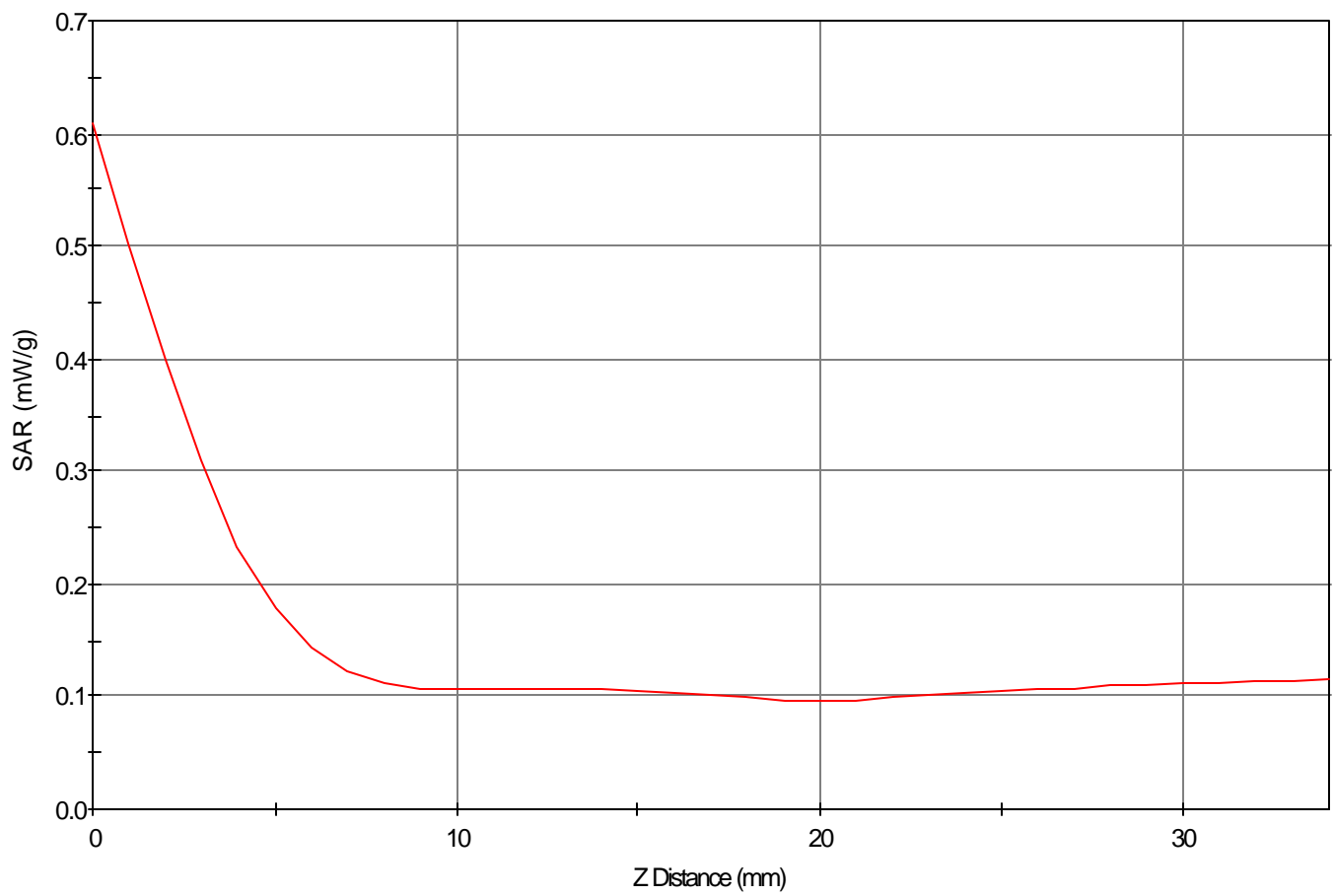
Area Scan - Max Peak SAR Value at x=59.0 y=37.0 = 0.22 W/kg

Zoom Scan - Max Peak SAR Value at x=58.0 y=37.0 z=0.0 = 0.61 W/kg

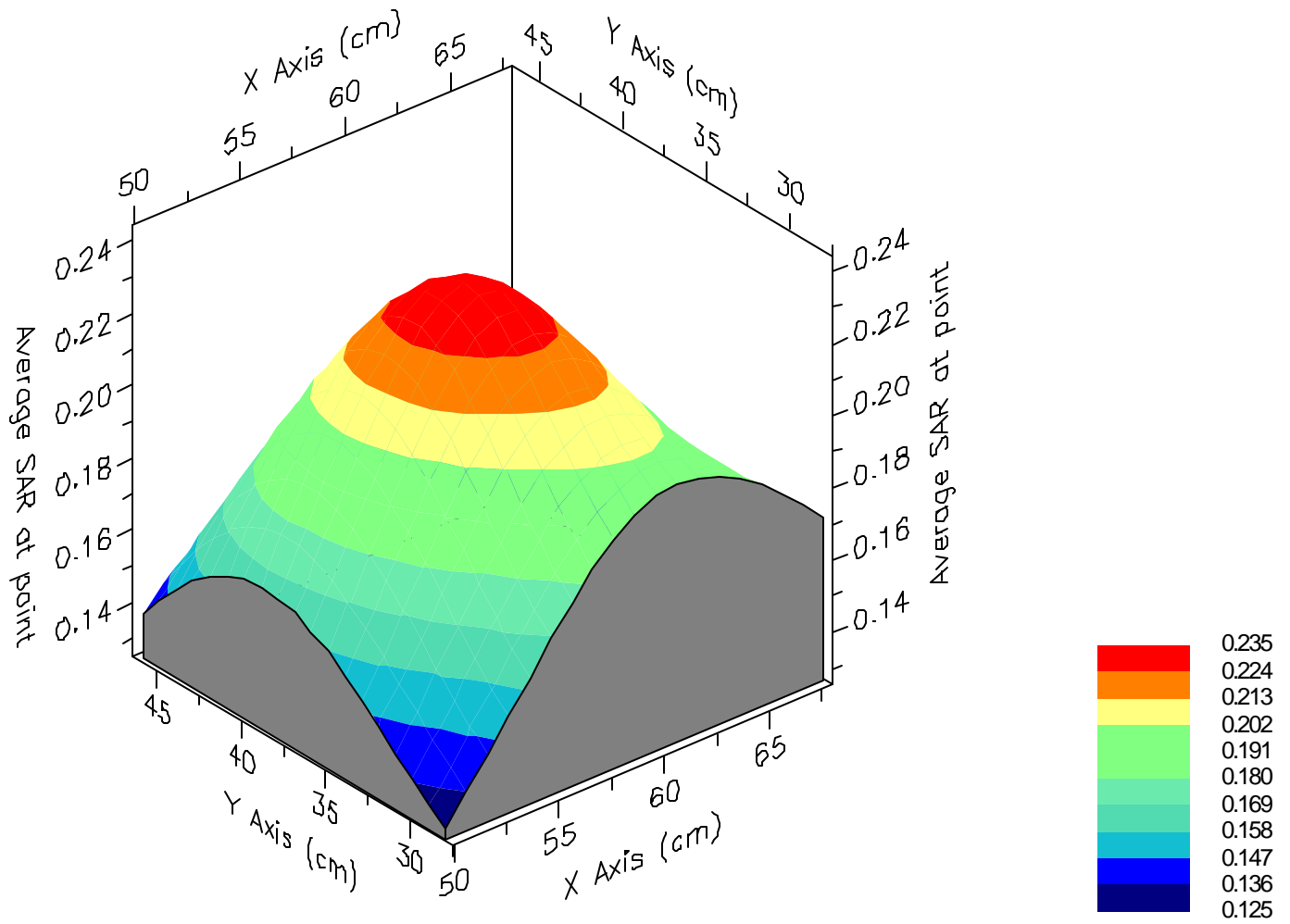
Max 1g SAR at x=58.0 y=37.0 z=0.0 = 0.24 W/kg

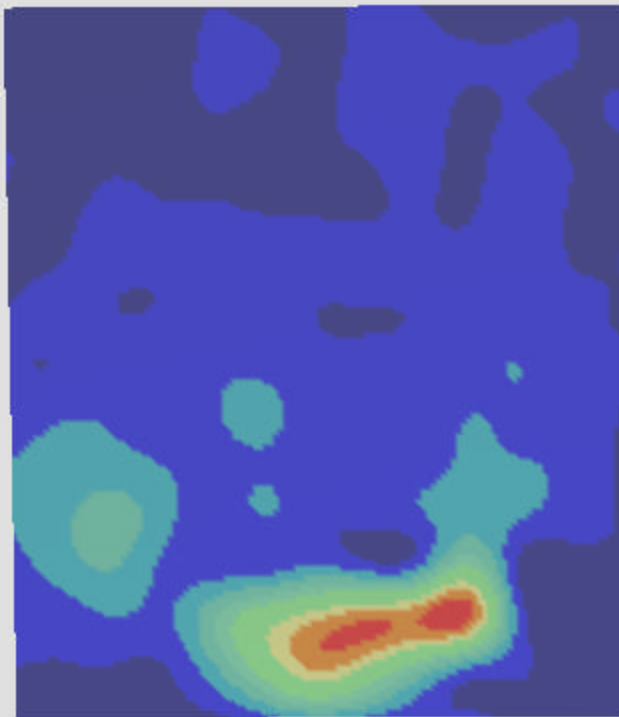
Max 10g SAR at x=60.0 y=34.0 z=0.0 = 0.14 W/kg

SAR - Z Axis
at Hotspot x:58.0 y:37.0



1g SAR Values





SAR Data Report 05042703

Start : 27-Apr-05 10:19:27 am
End : 27-Apr-05 10:29:48 am
Code Version : 4.08
Robot Version: 4.08

Product Data:

Type : Flarion
Model Number : FPC-1000
Serial Number : 1
Frequency : 710 MHz
Transmit Pwr : 0.25 W
Antenna Type : External
Antenna Posn. : Fixed

Measurement Data:

Phantom Name : FLATPHANTOM
Phantom Type : Uniphantom
Tissue Type : Muscle
Tissue Dielectric : 54.820
Tissue Conductivity : 0.980
Tissue Density : 1.000
Robot Name : CRS

Probe Data:

Probe Name : PCT005
Probe Type : E Fld Triangle
Frequency : 835 MHz
Tissue Type : Muscle
Calibrated Dielectric : 53.660
Calibrated Conductivity : 0.980
Calibrated Density : 1.000
Probe Offset : 1.600 mm
Conversion Factor : 5.500
Probe Sensitivity : 3.807 3.736 3.821 mV/(mW/cm^2)
Amplifier Gains : 20.00 20.00 20.00

Sample:

Rate: 6000 Samples/Sec
Count: 1000 Samples
NIDAQ Gain: 5

Comments:

715.05MHz Ch. 101
Body SAR
CF=1; Amb. Temp= 22.2 'C; Liq. Temp=21.1 'C

Power Drop Test:

Reading @ start = 0.167
Reading @ End = 0.185
Power at End = 110.7%

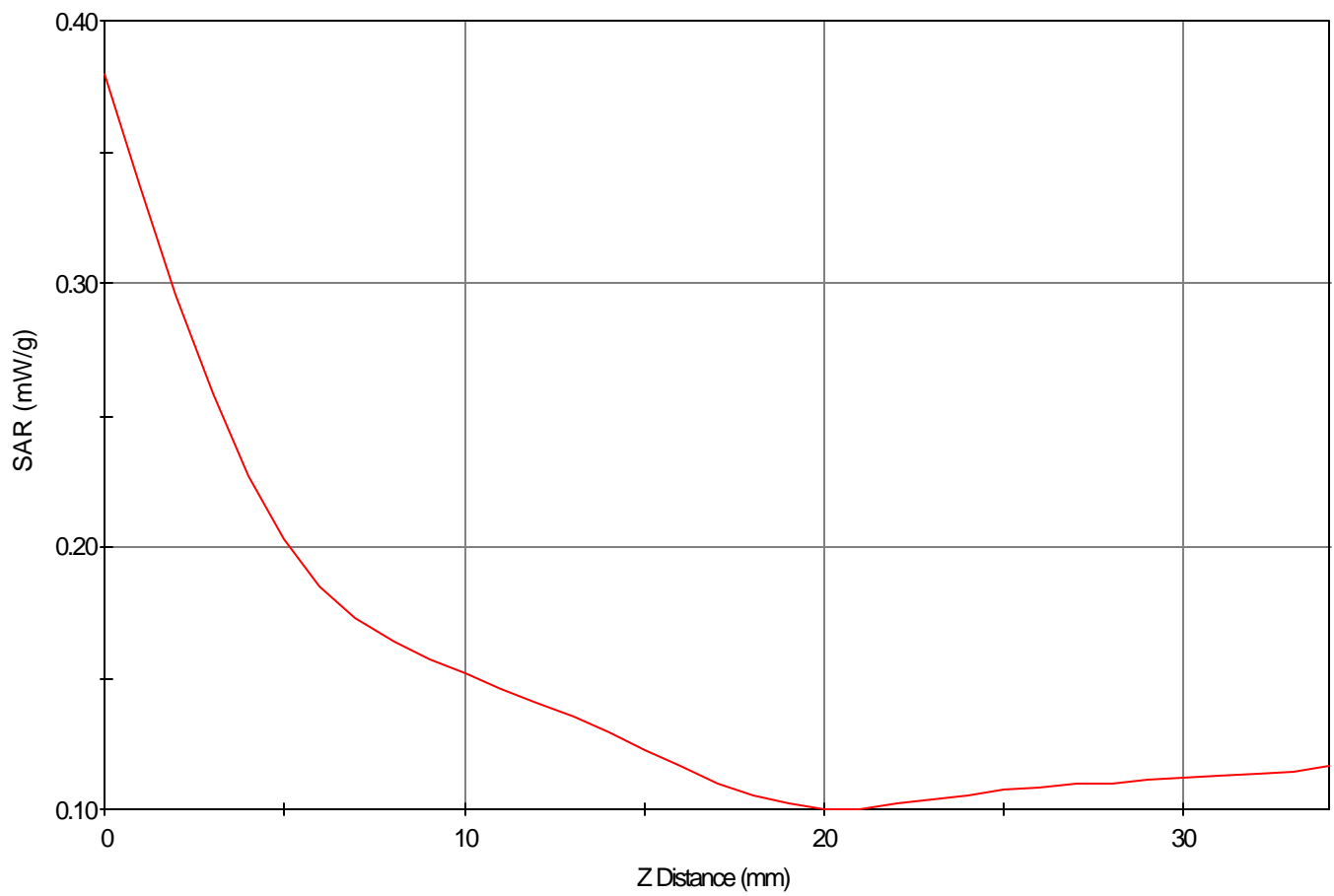
Area Scan - Max Peak SAR Value at x=51.0 y=24.0 = 0.23 W/kg

Zoom Scan - Max Peak SAR Value at x=51.0 y=29.0 z=0.0 = 0.38 W/kg

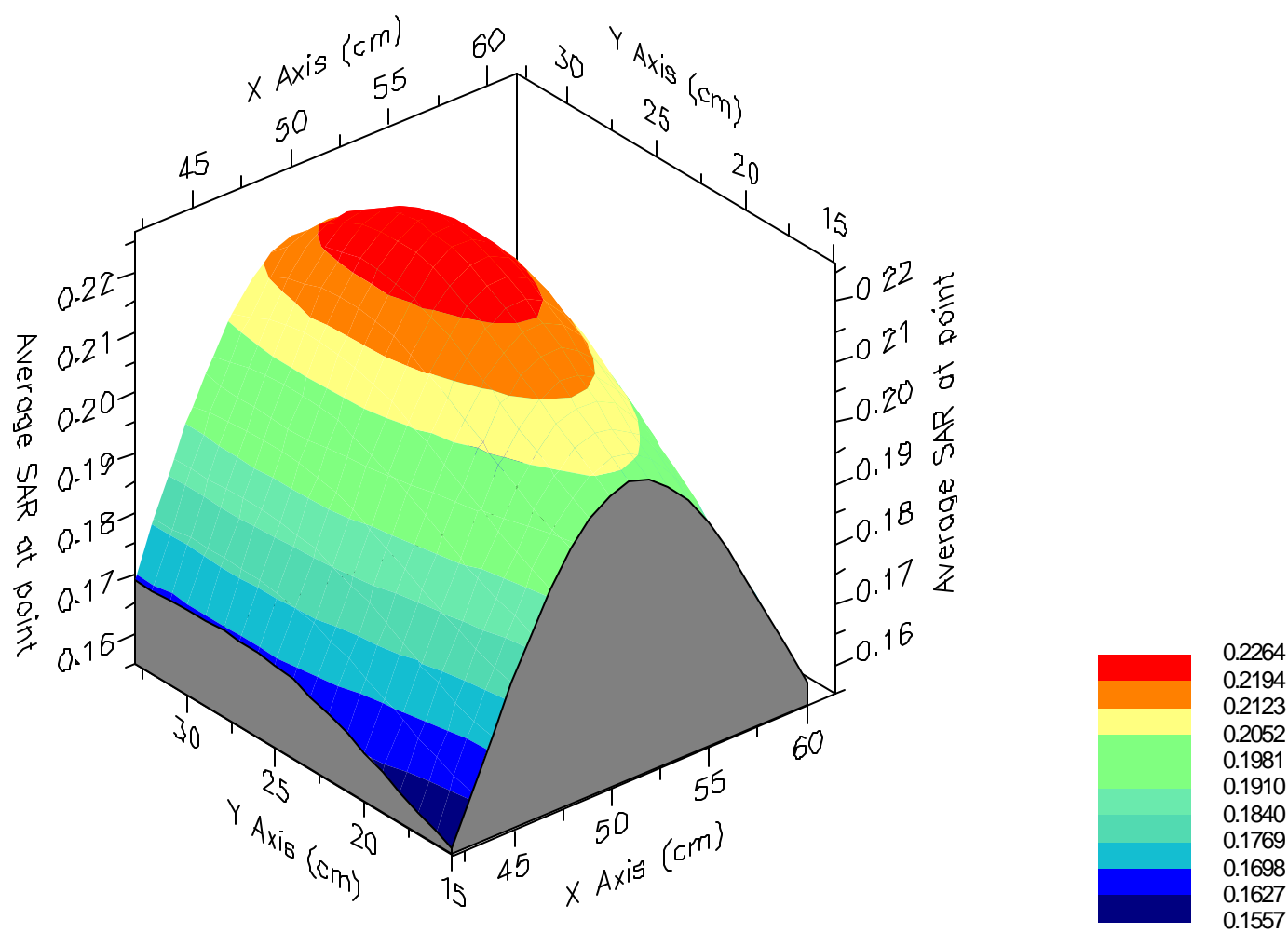
Max 1g SAR at x=51.0 y=27.0 z=0.0 = 0.23 W/kg

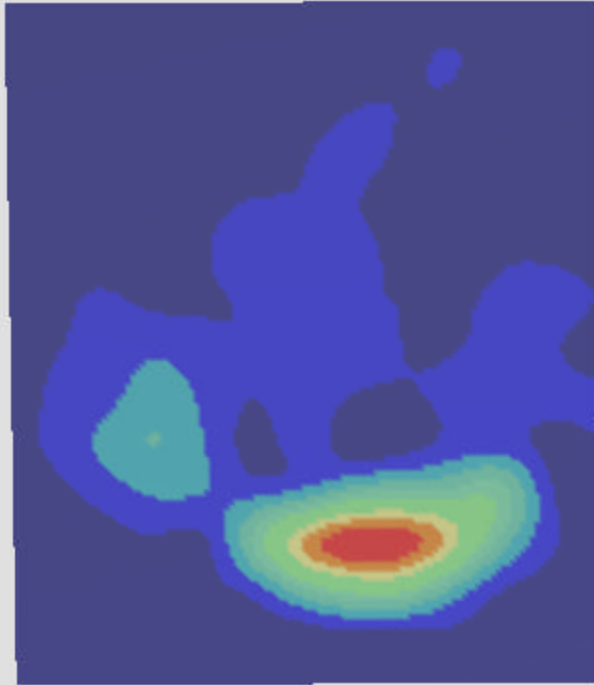
Max 10g SAR at x=51.0 y=26.0 z=0.0 = 0.15 W/kg

SAR - Z Axis
at Hotspot x:51.0 y:29.0



1g SAR Values





APPENDIX B: DIPOLE VALIDATION

SAR Data Report 05042704

Start : 27-Apr-05 11:21:30 am
End : 27-Apr-05 11:28:33 am
Code Version : 4.08
Robot Version: 4.08

Product Data:

Type : Verification
Model Number : E-020
Serial Number : PCT005
Frequency : 835 MHz
Transmit Pwr : 0.160 W
Antenna Type : Dipole
Antenna Posn. : Verification

Measurement Data:

Phantom Name : FLATPHANTOM
Phantom Type : Uniphantom
Tissue Type : Brain
Tissue Dielectric : 42.380
Tissue Conductivity : 0.900
Tissue Density : 1.000
Robot Name : CRS

Probe Data:

Probe Name : PCT005
Probe Type : E Fld Triangle
Frequency : 835 MHz
Tissue Type : Brain
Calibrated Dielectric : 40.810
Calibrated Conductivity : 0.870
Calibrated Density : 1.000
Probe Offset : 1.600 mm
Conversion Factor : 5.500
Probe Sensitivity : 3.807 3.736 3.821 mV/(mW/cm^2)
Amplifier Gains : 20.00 20.00 20.00

Sample:

Rate: 6000 Samples/Sec
Count: 1000 Samples
NIDAQ Gain: 5

Comments:

835MHz Verification

CF=1; Amb. Temp= 22.2 'C; Liq. Temp=21.1 'C

Power Drop Test:

Reading @ start = 2.404
Reading @ End = 2.439
Power at End = 101.5%

Area Scan - Max Peak SAR Value at x=-4.0 y=1.0 = 1.51 W/kg

Zoom Scan - Max Peak SAR Value at x=-11.0 y=8.0 z=0.0 = 4.05 W/kg

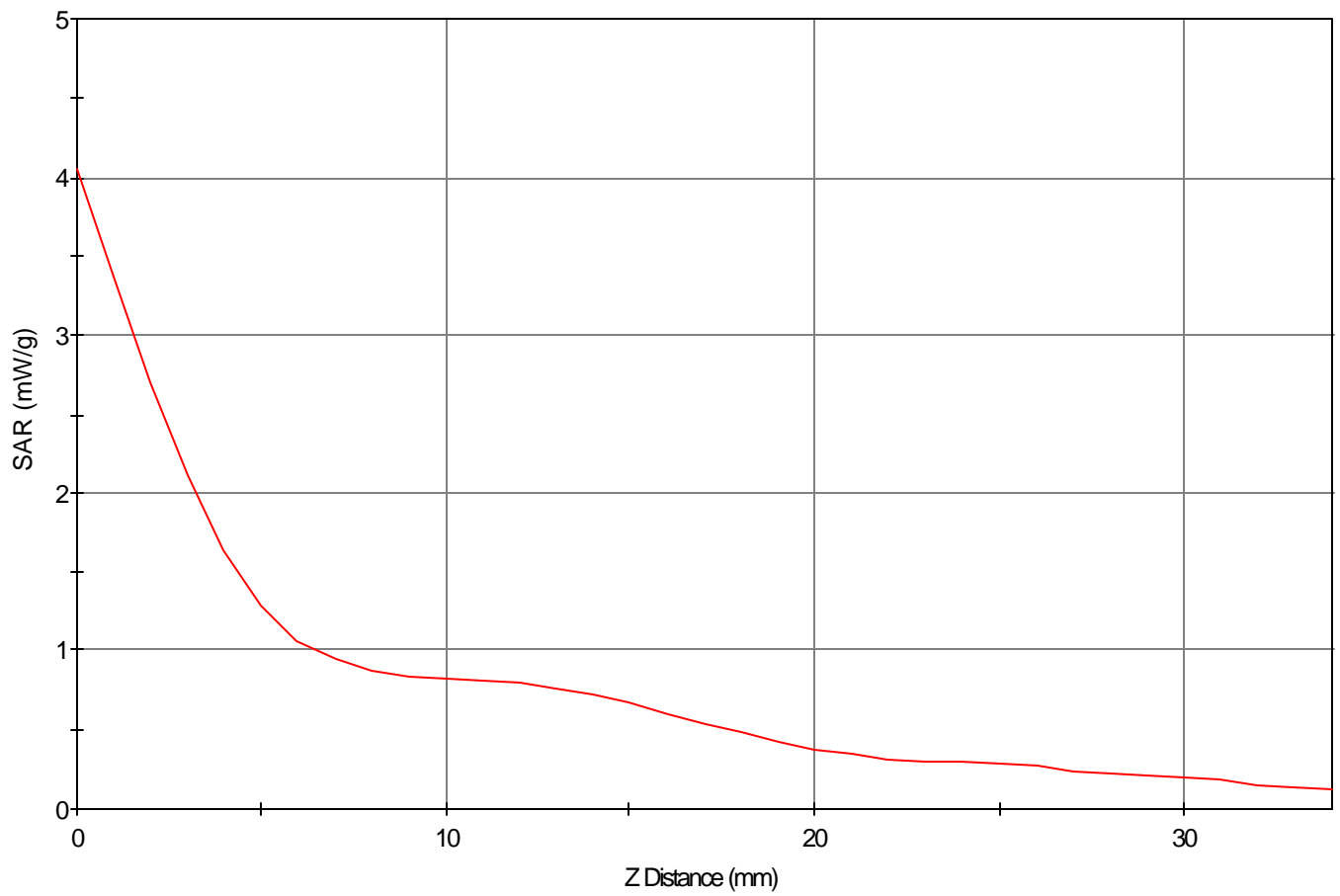
Max 1g SAR at x=-11.0 y=7.0 z=0.0 = 1.66 W/kg

Max 10g SAR at x=-5.0 y=3.0 z=0.0 = 0.95 W/kg

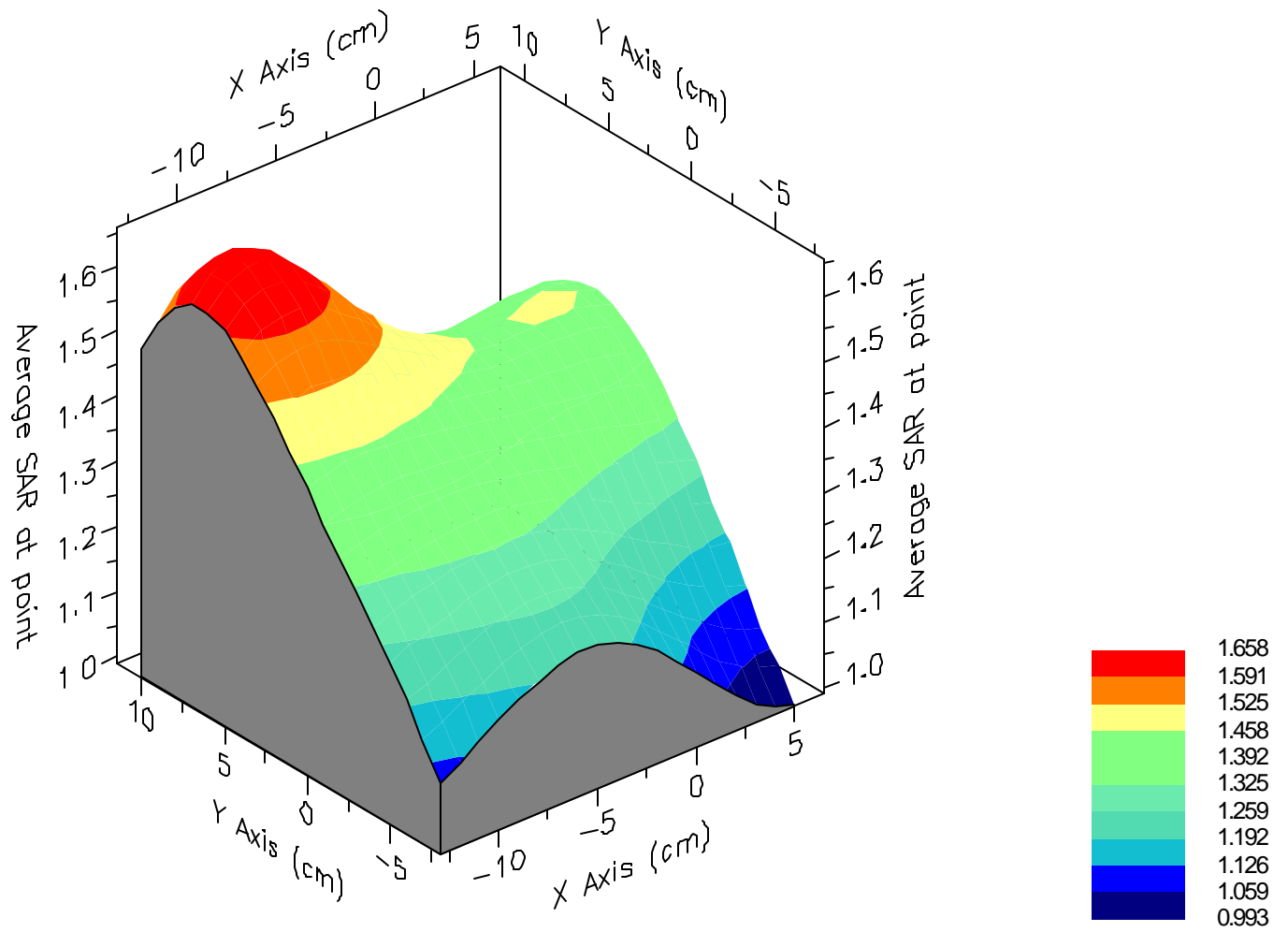
Validation Results at 0.16 W:

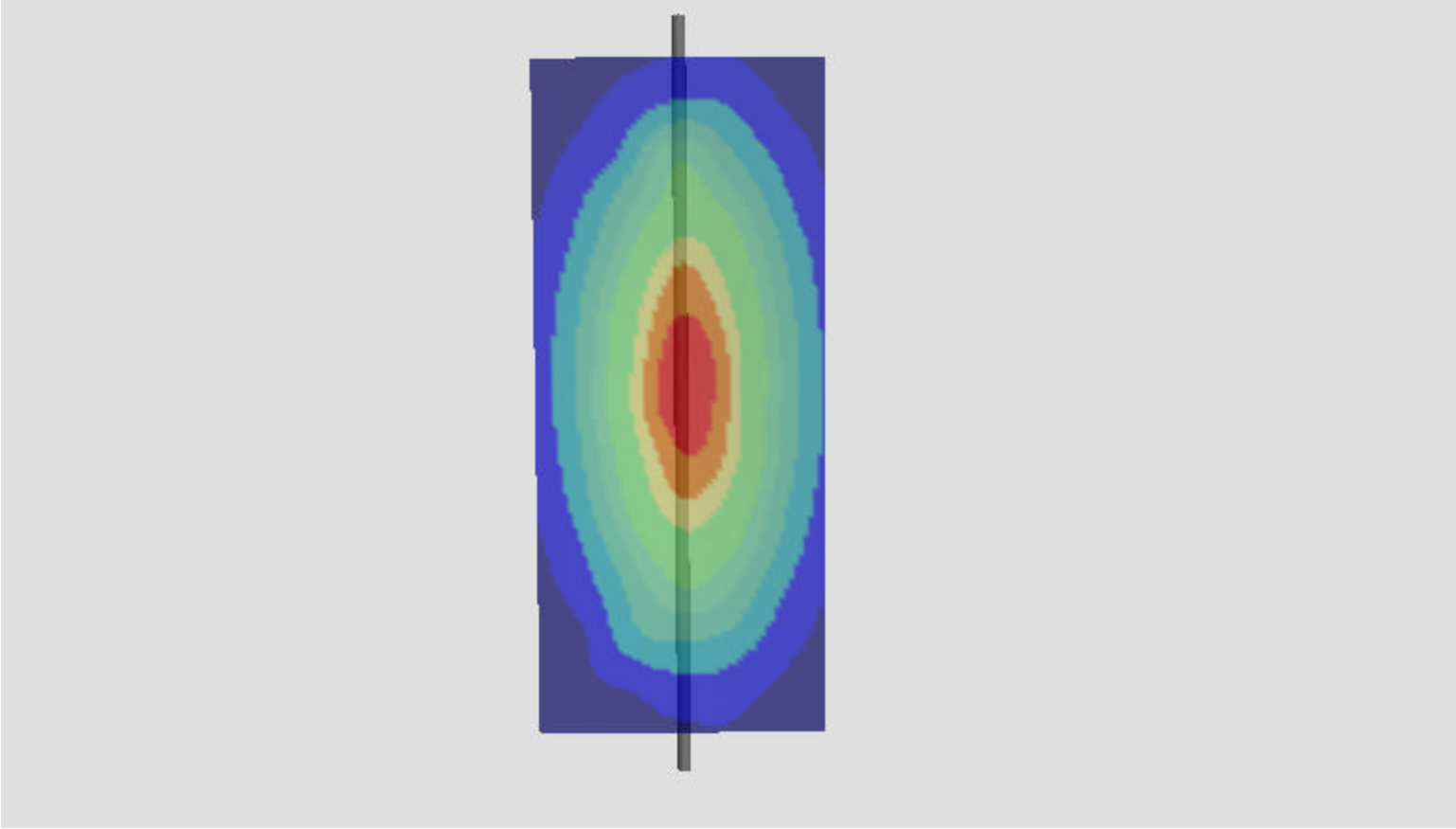
Peak Nominal = 2.3, Error: 79.42 %
1g Nominal = 1.5, Error: 9.08 %
10g Nominal = 1.0, Error: -4.33 %

SAR - Z Axis
at Hotspot x:-11.0 y:8.0



1g SAR Values





APPENDIX C: PROBE CALIBRATION



Probe E-020

SN: PCT005

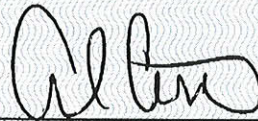
Manufactured:
Calibrated:

November 10, 2004
January 17, 2005

Calibrated for the IDX System

PCTEST Calibration Laboratory

Approved By:



Alfred Cirwithian
Vice President Engineering

Calibration is performed according to IEEE Std. 1528 - 2003
and all test equipment used is traceable to U.S. NIST.

PCTEST Calibration Laboratory

6660-B Dobbin Road
Columbia, Maryland 21045 USA

Calibration Summary

Model: E-020

S/N: PCT005

Tissue Type	Frequency (MHz)	Dielectric Constant ϵ_r	Conductivity (S/m) σ	Conversion Factor $\gamma_x, \gamma_y, \gamma_z$
Brain	450	44.41	0.88	8.8
Brain	835	40.81	0.87	5.5
Brain	1900	39.02	1.37	5.4
Brain	2100	41.11	1.39	5.25
Muscle	450	57.70	0.96	9.24
Muscle	835	53.66	0.98	5.85
Muscle	1900	51.81	1.58	5.5
Muscle	2100	52.23	1.53	5.3

Frequency (MHz)	Isotropy	
	%	dB
450	1.23	0.05
835	2.12	0.09
1900	6.61	0.28
2100	7.61	0.32

Boundary Effect < 2%, 2.5 mm from probe tip to phantom

Diode Compression Point: 120 mV

Environmental Conditions:

Temperature: 22.6 °C

Relative Humidity: 41%

Barometer: 101.2 kPa

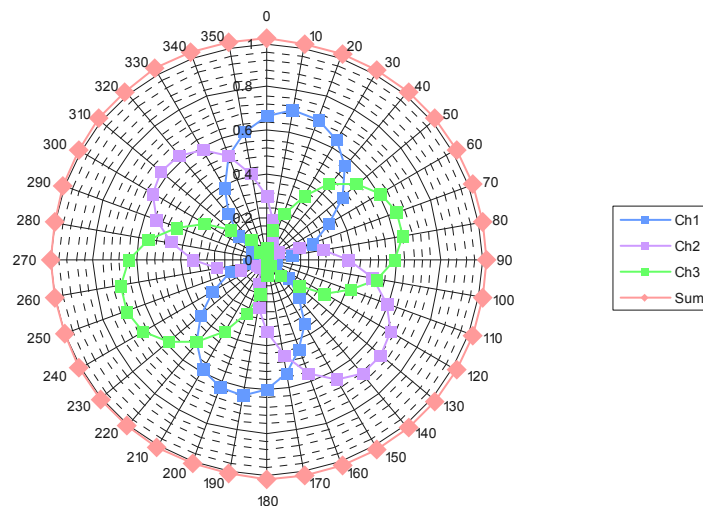
----- .

This probe was calibrated under the IEEE Std 1309-1966, *IEEE Standard for Calibration of Electromagnetic Field Sensors and Probes, Excluding Antennas*, from 9 kHz to 40 GHz.

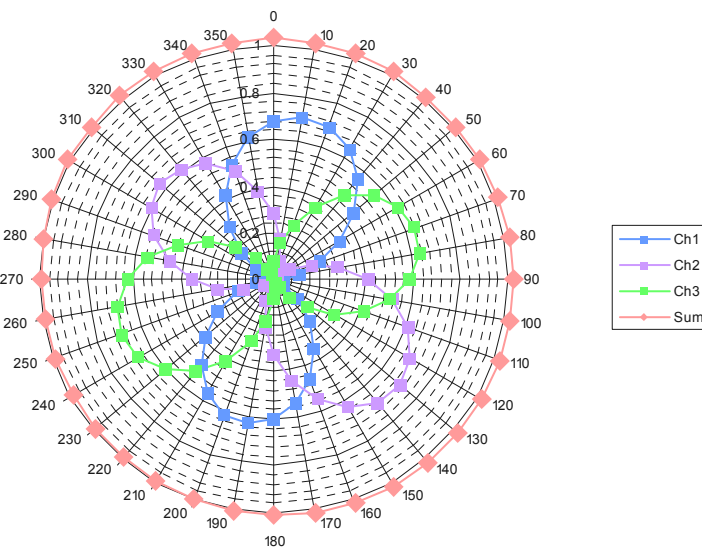
PCTEST Calibration Laboratory

6660-B Dobbin Road
Columbia, Maryland 21045 USA

450 MHz Calibration (PCT005)



835 MHz Calibration (PCT005)

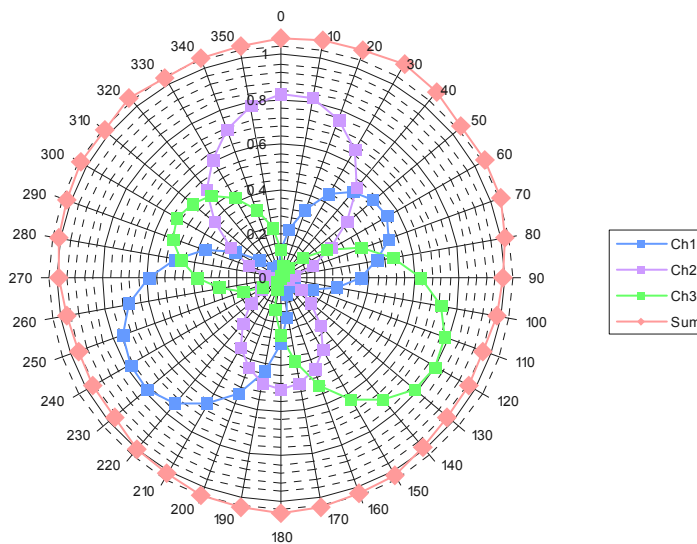


PCTEST Calibration Laboratory

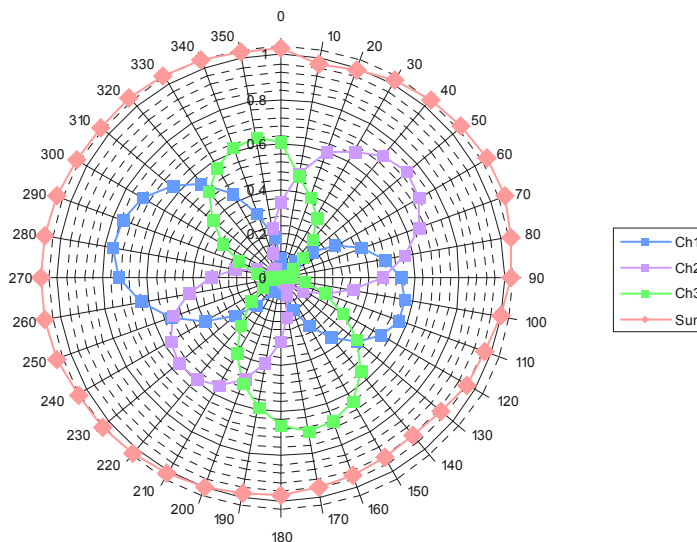
6660-B Dobbin Road

Columbia, Maryland 21045 USA

1900 MHz Calibration (PCT005)

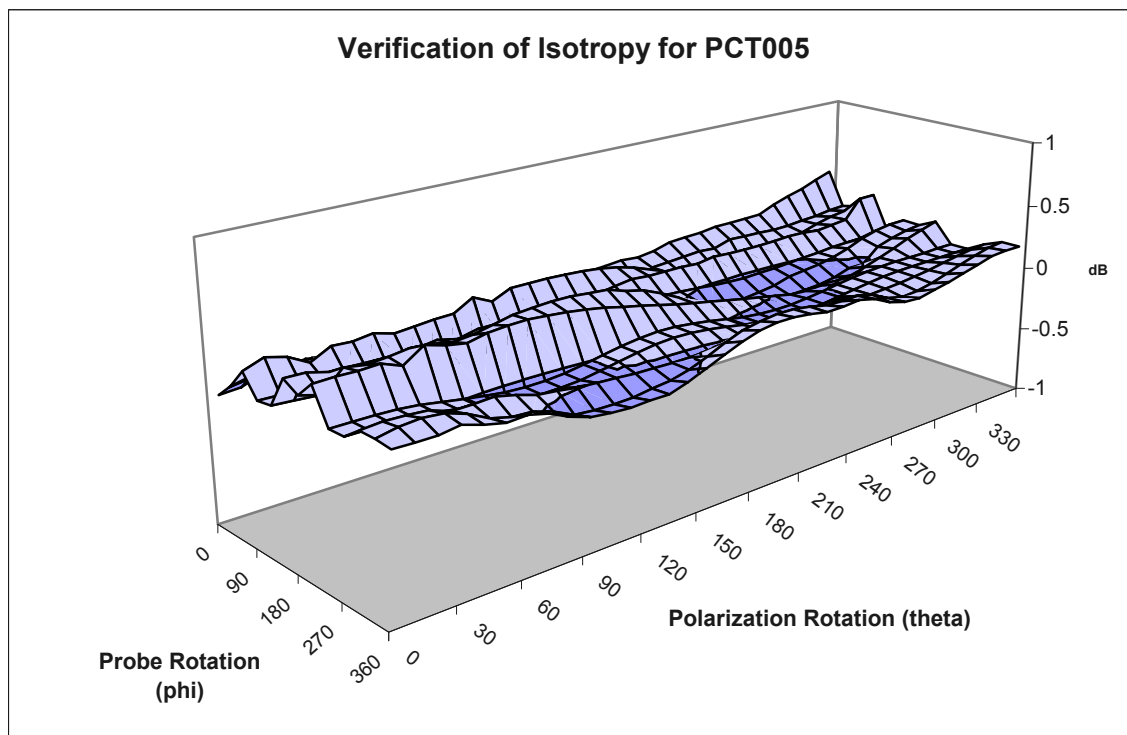


2100 MHz Calibration (PCT005)



PCTEST Calibration Laboratory

6660-B Dobbin Road
Columbia, Maryland 21045 USA

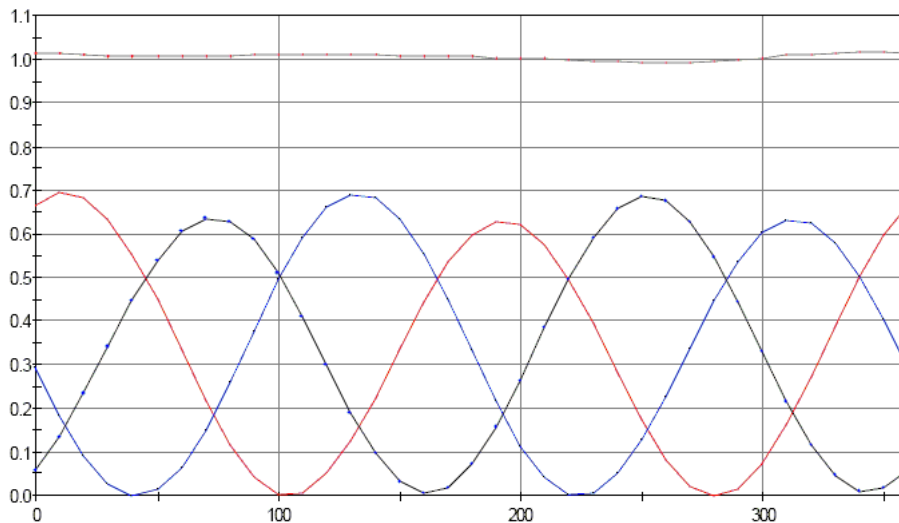


PCTEST Calibration Laboratory

6660-B Dobbin Road
Columbia, Maryland 21045 USA

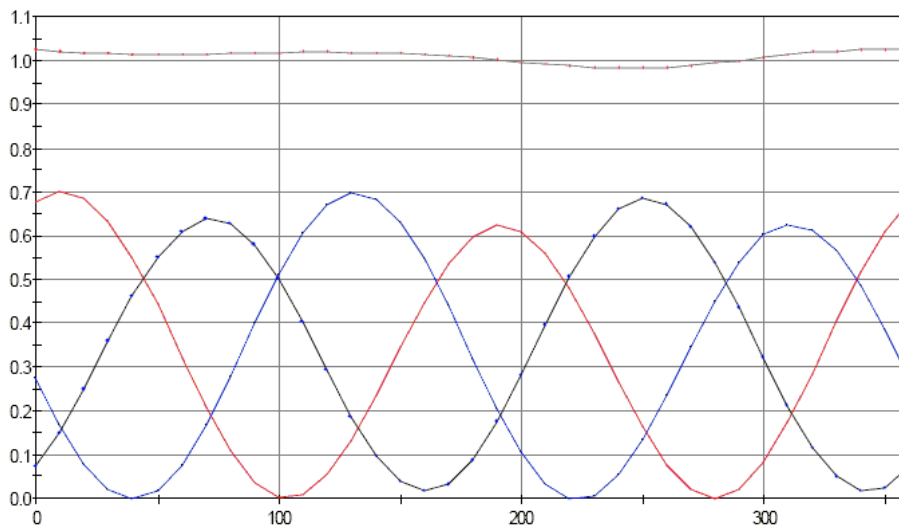
TEM Calibration Plot
Date: 13-Jan-05 04:03:28 pm
Probe Name: PCT005
Frequency: 450

Sensitivity: Ch1: 3.320 Ch2: 3.289 Ch3: 3.267 mV/(mW/cm²)
Isotropy: 1.23% 0.05 db Min=0.993 Max=1.019



TEM Calibration Plot
Date: 13-Jan-05 03:41:45 pm
Probe Name: PCT005
Frequency: 835

Sensitivity: Ch1: 3.807 Ch2: 3.736 Ch3: 3.821 mV/(mW/cm²)
Isotropy: 2.12% 0.09 db Min=0.985 Max=1.028



PCTEST Calibration Laboratory

6660-B Dobbin Road
Columbia, Maryland 21045 USA

TEM Calibration Plot

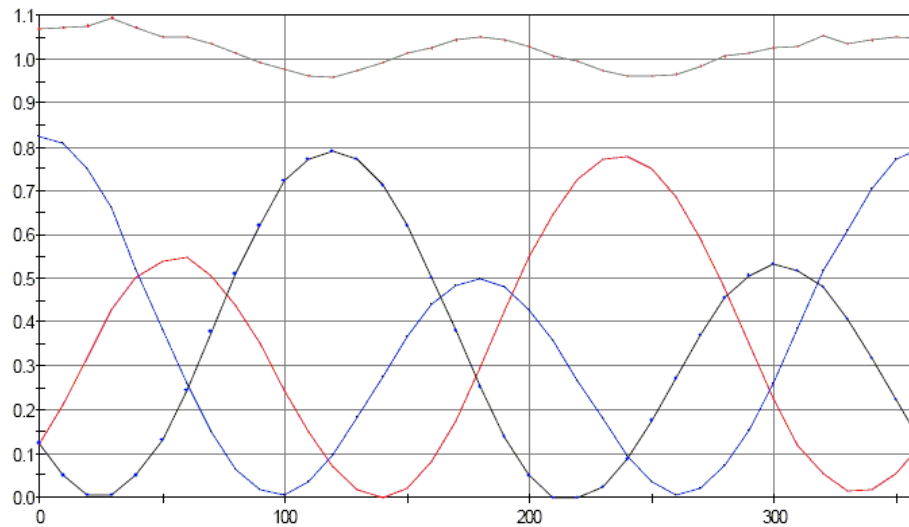
Date: 14-Jan-05 11:08:15 am

Probe Name: PCT005

Frequency: 1900

Sensitivity: Ch1: 5.115 Ch2: 4.969 Ch3: 4.453 mV/(mW/cm²)

Isotropy: 6.79% 0.29 db Min=0.961 Max=1.097



TEM Calibration Plot

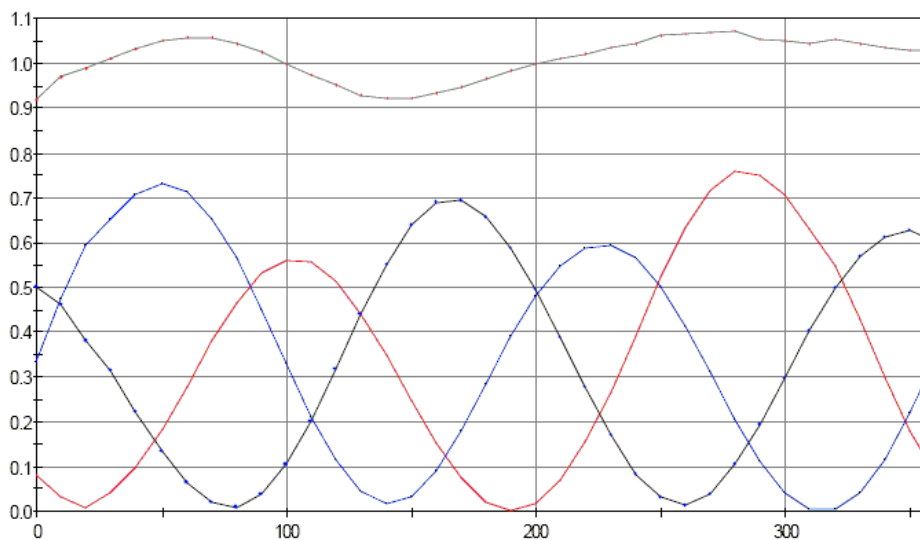
Date: 14-Jan-05 11:38:38 am

Probe Name: PCT005

Frequency: 2100

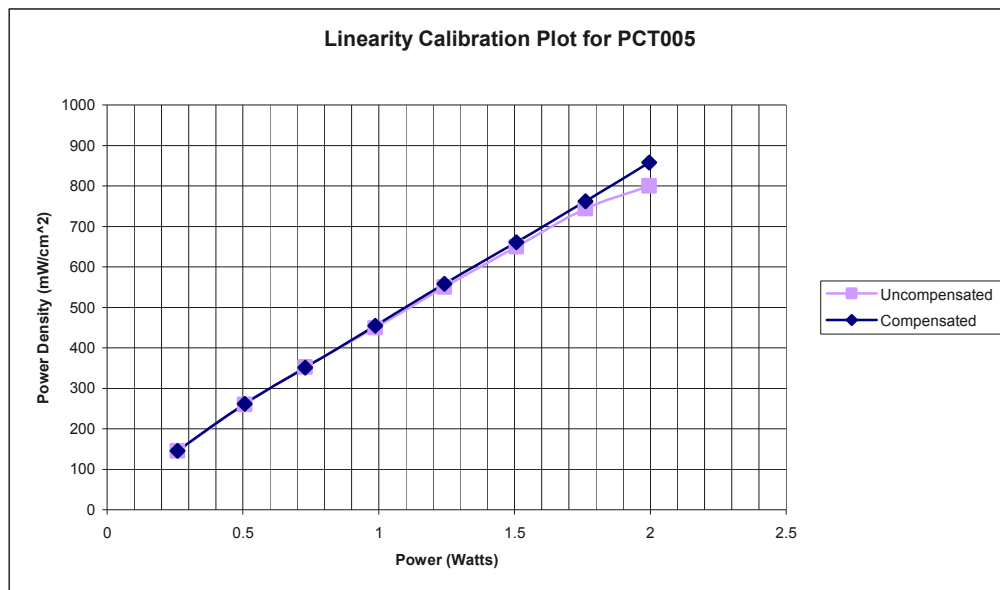
Sensitivity: Ch1: 5.496 Ch2: 4.887 Ch3: 5.267 mV/(mW/cm²)

Isotropy: 7.61% 0.32 db Min=0.921 Max=1.074



PCTEST Calibration Laboratory

6660-B Dobbin Road
Columbia, Maryland 21045 USA



Probe Physical Characteristics

Serial Number: PCT005
Model: E-020

Sensor Offset: 1.56 mm
Sensor Length: 2.5 mm
Tip Enclosure: Ertalyte
Tip Diameter: 5 mm
Tip Length: 60 mm
Total Length: 290 mm

PCTEST Calibration Laboratory

6660-B Dobbin Road
Columbia, Maryland 21045 USA

Test Equipment

The test equipment used during the probe calibration are listed as follows:

EQUIPMENT SPECIFICATIONS		
Type	Calibration Due	Asset Number/ Serial Number
CRS Robot F3	February 2005	RAF0134133
CRS C500C Motion Controller	February 2005	RCB0003303
CRS Teach Pendant (Joystick)	February 2005	STP0132231
DELL Computer, Pentium 4 1.6 GHz, Windows 2000™	February 2005	4PJZ111
Flat SAM Phantom (P-SAM-FLAT)	February 2005	94X-097
IDX Robot End Effector (EE-103-C)	February 2005	07111223
IDX Probe Amplifier	February 2005	07111113
Validation Dipole D835V2	October 2005	PCT441
Validation Dipole D1900V2	February 2005	PCT512
Validation Dipole D2450V2	October 2005	PCT641
HP-778D Dual-Directional Coupler (0.1 ~ 2.0 GHz)	November 2005	PCT664
MicroCircuits Directional Coupler (4.0 ~ 8.0 GHz)	November 2005	PE2204-6
Amplifier Research 5S1G4 Power Amp	January 2005	PCT540
IFI T184-10 Power Amplifier (4.0 ~ 18.0 GHz)	December 2005	5957
HP-8241A (250kHz ~ 20 GHz) Signal Generator	December 2005	88934
HP-8753E (30kHz ~ 6GHz) Network Analyzer	January 2006	PCT552
Rohde & Schwarz Power Meter NRVS 1020.1809.02	January 2006	835360/079
Rohde & Schwarz Power Sensor NRV-Z53 858.0500.02	April 2005	846076/007
HP85070B Dielectric Probe Kit	January 2005	PCT501
IFI CC110EXX TEM Cell (DC to 2000 MHz)	January 2006	PCT498
EMCO 3115 Horn Antenna (2.0 ~ 18.0 GHz)	August 2005	PCT496
Guildline 5150 Precision Dual-Thermometer	November 2005	66145