

Class II Change Test Report

EUT Name: Form 12S REX Meter

EUT Model: ZCC599A00000

FCC Title 47, Part 15, SubpartC, RSS-210 Issue 5

Prepared for:

Bob Mason
Elster Electricity, LLC
208 South Rogers Lane
Raleigh, NC 27610
Tel: 919 212-4700
Fax: 919 212-5108

Prepared by:

TUV Rheinland of North America
762 Park Avenue
Youngsville, NC 27596
Tel: (919) 554-3668
Fax: (919) 556-2043
<http://www.tuv.com/>

Report/Issue Date: 23 August 2005

Report Number: 30561014.010

Statement of Compliance

Manufacturer: Elster Electricity, LLC
208 South Rogers Lane
Raleigh, NC 27610
919 212-4700
Requester / Applicant: Bob Mason
Name of Equipment: Form 12S REX Meter
Model No. ZCC599A00000
Type of Equipment: Intentional Radiator
Application of Regulations: FCC Title 47, Part 15, SubpartC, RSS-210 Issue 5
Test Dates: 2 May 2005 to 28 July 2005

Guidance Documents:

Emissions: FCC 47 CFR Part 15, RSS-210 Issue 5

Test Methods:

Emissions: ANSI C63.4:2003

The electromagnetic compatibility test and documented data described in this report has been performed and recorded by TUV Rheinland of North America, in accordance with the standards and procedures listed herein. As the responsible authorized agent of the EMC laboratory, I hereby declare that a sample of one, of the equipment described above, has been shown to be compliant with the EMC requirements of the stated regulations and standards based on these results. If any special accessories and/or modifications were required for compliance, they are listed in the Executive Summary of this report.

This report must not be used to claim product endorsement by NVLAP or any agency of the U.S. Government. This report contains data that are not covered by NVLAP accreditation. This report shall not be reproduced except in full, without the written authorization of the laboratory.

NVLAP Signatory

23 August 2005

Date

Table of Contents

1	EXECUTIVE SUMMARY	4
1.1	SCOPE	4
1.2	PURPOSE	4
1.3	SUMMARY OF TEST RESULTS	4
1.4	SPECIAL ACCESSORIES	4
1.5	EQUIPMENT MODIFICATIONS	5
2	LABORATORY INFORMATION	5
2.1	ACCREDITATIONS & ENDORSEMENTS	5
2.2	TEST FACILITIES	5
2.3	MEASUREMENT UNCERTAINTY	6
2.4	CALIBRATION TRACEABILITY	7
3	PRODUCT INFORMATION	7
3.1	PRODUCT DESCRIPTION	8
3.2	EQUIPMENT CONFIGURATION	8
3.3	OPERATION MODE	9
4	EMISSIONS	9
4.1	CHANNEL SEPARATION PART 15.247(A)(1)	9
4.2	PSEUDORANDOM HOPPING ALGORITHM FCC PART 15.247(A)(1)	9
4.3	TIME OF OCCUPANCY FCC PART 15.247(A)(1)(i)	10
4.4	OCCUPIED BANDWIDTH FCC PART 15.247(A)(1)(i)	10
4.5	PEAK OUTPUT POWER FCC PART 15.247(B)(2)	12
4.6	SPURIOUS EMISSIONS FCC PART 15.247(C)	13
4.7	FREQUENCY HOPPING SPREAD SPECTRUM SYSTEMS FCC PART 15.247(G)	23
4.8	INCORPORATION OF INTELLIGENCE WITHIN A FREQUENCY HOPPING SPREAD SPECTRUM SYSTEM FCC PART 15.247(H)	23
4.9	FREQUENCY STABILITY FCC PART 15.215(C)	23
4.10	CONDUCTED EMISSIONS	28
5	TEST EQUIPMENT USE LIST	32
6	EMC TEST PLAN	32

1 Executive Summary

1.1 Scope

This report is intended to document the status of conformance with the requirements of the FCC Title 47, Part 15, SubpartC, RSS-210 Issue 5 based on the results of testing performed on 2 May 2005 through 28 July 2005 on the *Form 12S REX Meter* Model No. ZCC599A00000 manufactured by Elster Electricity, LLC. This report only applies to the specific samples tested under the stated test conditions. It is the responsibility of the manufacturer to assure that additional production units of this model are manufactured with identical or EMI equivalent electrical and mechanical components. This report is further intended to document changes and modifications to the EUT throughout its life cycle. All documentation will be included as a supplement.

1.2 Purpose

Testing was performed to evaluate the EMC performance of the EUT in accordance with the applicable requirements, procedures, and criteria defined in the application of regulations and application of standards listed in this report.

1.3 Summary of Test Results

Table 1 - Summary of Test Results

Test	Test Method(s)	Test Parameters	Measurement	Result
Channel Separation	FCC Part 15.247(a)(1)	Greater of 25 kHz or 20 dB bandwidth		Not Required
Pseudorandom Hopping Algorithm				Not Required
Time of Occupancy	FCC Part 15.247(a)(1)(i)	=<0.4 sec in 10 sec.		Not Required
Occupied Bandwidth	FCC Part 15.247(a)(1)(i)	=<500kHz	448 kHz	compliant
Peak Output Power	FCC Part 15.247(b)(2)	0.25 Watts	0.245 Watts	compliant
Spurious Emissions	FCC Part 15.247(C)	Table FCC Part 15.209	47.25 dBuV/m @ 3meters Average	compliant
Frequency Hopping Spread Spectrum Systems	FCC Part 15.247(g)			Not Required
Incorporation of Intelligence	FCC Part 15.247(h)			Not Required
Frequency Stability	FCC Part 15.215(c)	Containment of 20 dB bandwidth between 902 and 928		compliant
Conducted Emissions	47 CFR Part 15.207, ANSI C63.4:2003, RSS-210 Issue 5	Table FCC Part 15.207	47.91 dBuV Average	compliant

1.4 Special Accessories

No special accessories were necessary in order to achieve compliance.

1.5 Equipment Modifications

No modifications were found to be necessary in order to achieve compliance.

2 Laboratory Information

2.1 Accreditations & Endorsements

2.1.1 US Federal Communications Commission

TUV Rheinland of North America at the 762 Park Ave. Youngsville, N.C 27596 address is accredited by the commission for performing testing services for the general public on a fee basis. This laboratory test facilities have been fully described in reports submitted to and accepted by the FCC (Registration No 90552 and 100881). The laboratory scope of accreditation includes: Title 47 CFR Part 15, 18, and 90. The accreditation is updated every 3 years.

2.1.2 NIST / NVLAP

TUV Rheinland of North America is accredited by the National Voluntary Laboratory Accreditation Program, which is administered under the auspices of the National Institute of Standards and Technology. The laboratory has been assessed and accredited in accordance with ISO Guide 25 and ISO 9002 (Lab code 200094-0). The scope of laboratory accreditation includes emission and immunity testing. The accreditation is updated annually.

2.1.3 Japan - VCCI

The Voluntary Control Council for Interference by Information Technology Equipment (VCCI) is a group that consists of Information Technology Equipment (ITE) manufacturers and EMC test laboratories. The purpose of the Council is to take voluntary control measures against electromagnetic interference from Information Technology Equipment, and thereby contribute to the development of a socially beneficial and responsible state of affairs in the realm of Information Technology Equipment in Japan. TUV Rheinland of North America at the 762 Park Ave. Youngsville, N.C 27596 address has been assessed and approved in accordance with the Regulations for Voluntary Control Measures. (Registration No. R-1174 and C-1236).

2.1.4 Acceptance By Mutual Recognition Arrangement

The United States has an established agreement with specific countries under the Asia Pacific Laboratory Accreditation Corporation (APLAC) Mutual Recognition Arrangement. Under this agreement, all TUV Rheinland of North America at the 762 Park Ave. Youngsville, N.C 27596 address test results and test reports within the scope of the laboratory NIST / NVLAP accreditation will be accepted by each member country.

2.2 Test Facilities

All of the test facilities are located at 762 Park Ave., Youngsville, North Carolina 27596, USA.

2.2.1 Emission Test Facility

The Open Area Test Site and AC Line Conducted measurement facility used to collect the radiated and conducted data has been constructed in accordance with ANSI C63.7:1992. The site has been measured in accordance with and verified to comply with the theoretical normalized site attenuation requirements of ANSI C63.4:1992, at a test distance of 3 and 10 meters. This site has been described in reports dated May 12, 1997, submitted to the FCC, and accepted by letter dated June 25, 1997 (31040/SIT 1300F2). The site is listed with the FCC and accredited by NVLAP (code 200094-0). The 5m semi-anechoic chamber used to collect the radiated data has been verified to comply with the theoretical normalized site attenuation requirements of ANSI C63.4:1992, at a test distance of 3 meters. A report detailing this site can be obtained from TUV Rheinland of North America.

2.2.2 Immunity Test Facility

ESD, EFT, Surge, PQF: These tests are performed in an environmentally controlled room with a 3.7m x 3.7m x 3.175mm thick aluminum floor connected to PE ground. For ESD testing, tabletop equipment is placed on an insulated mat with a surface resistivity of 10^9 Ohms/square on a 1.6m x 0.8m x 0.8m high non-conductive table with a 3.175mm aluminum top (Horizontal Coupling Plane). The HCP is connected to the main ground plane via a low impedance ground strap through two 470 k Ω resistors. The Vertical Coupling Plane consists of an aluminum plate 50cm x 50cm x 3.175mm thick. The VCP is connected to the main ground plane via a low impedance ground strap through two 470 k Ω resistors. For each of the other tests, the HCP is removed.

RF Field Immunity testing is performed in a 7.3m x 3.7m x 3.2m anechoic chamber.

RF Conducted and Magnetic Field Immunity testing is performed on a 4.9m x 3.7m x 3.175mm thick aluminum ground plane which is connected to one end of the anechoic chamber.

All test areas allow a minimum distance of 1 meter from the EUT to walls or conducting objects.

2.3 Measurement Uncertainty

Two types of measurement uncertainty are expressed in this report, per *ISO Guide To The Expression Of Uncertainty In Measurement*, 1st edition, 1995.

The Combined Standard Uncertainty is the standard uncertainty of the result of a measurement when that result is obtained from the values of a number of other quantities, equal to the positive square root of a sum of terms, the terms being the variances or co-variances of these other quantities weighted according to how the measurement result varies with changes in these quantities. The term standard uncertainty is the result of a measurement expressed as a standard deviation.

The Expanded Uncertainty defines an interval about the result of a measurement that may be expected to encompass a large fraction of the distribution of values that could reasonably be attributed to the measurand. The fraction may be viewed as the coverage probability or level of confidence of the interval.

The test system for conducted emissions is defined as the LISN, spectrum analyzer, coaxial cables, and pads. The test system for radiated emissions is defined as the antenna, spectrum analyzer, pre-amplifier, coaxial cables, and pads. The conducted test system has a combined standard uncertainty of ± 1.2 dB. The radiated test system has a combined standard uncertainty of ± 1.6 dB. The expanded uncertainty at a level of 95% confidence is obtained by multiplying the combined standard uncertainty by a coverage factor of 2. Compliance criteria are not based on measurement uncertainty.

2.4 Calibration Traceability

All measurement instrumentation is traceable to the National Institute of Standards and Technology (NIST). Measurement method complies with ANSI/NCSL Z540-1-1994 and ISO Guide 25.

3 Product Information



Figure 1 – Photo of EUT

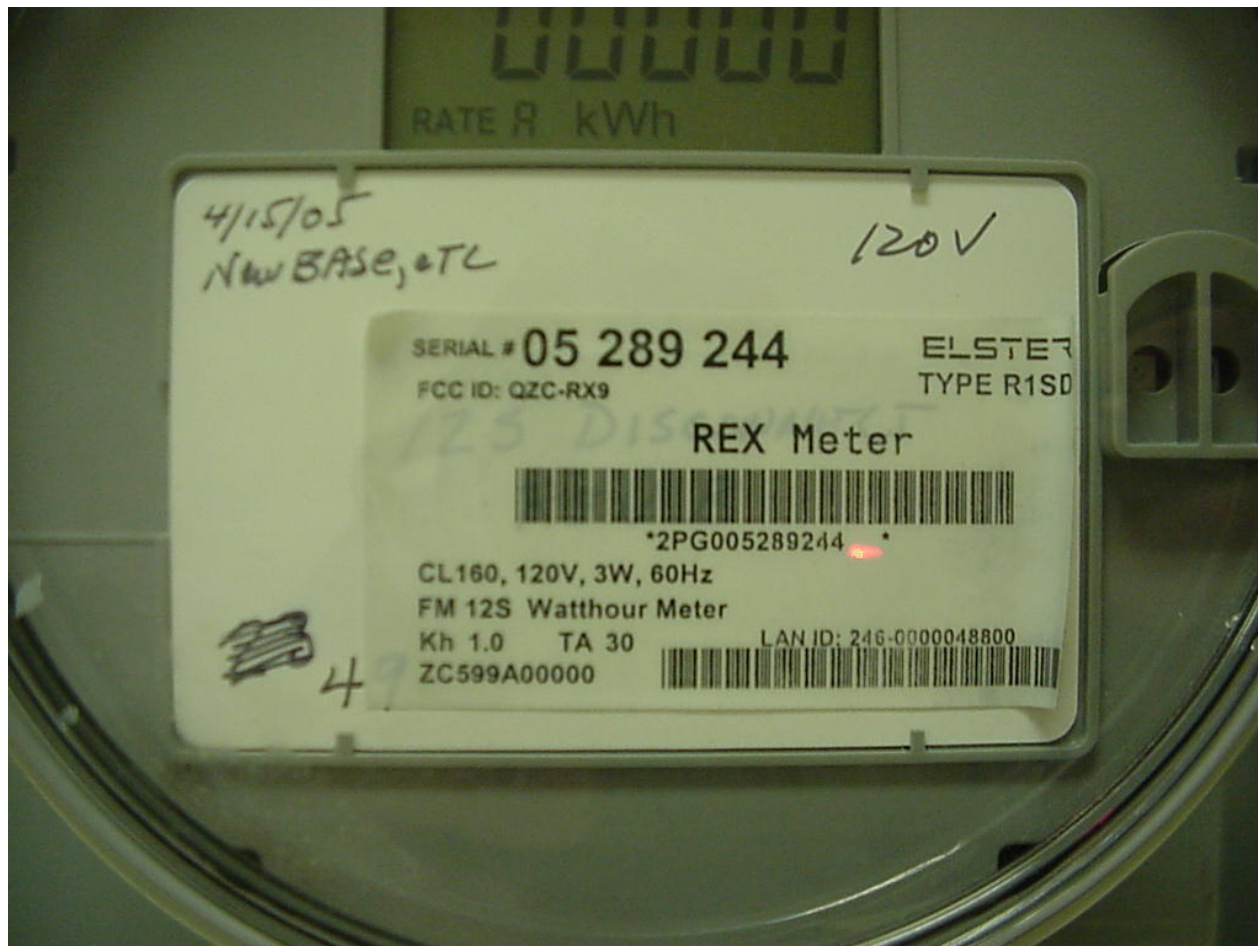


Figure 2 – Photo of EUT

3.1 Product Description

The information for all equipment used in the tested system, including: descriptions of cables, clock and microprocessor frequencies, EMI critical components, and accessory equipment has been supplied by the manufacturer and is listed in the EMC Test Plan found in Section 6.

3.2 Equipment Configuration

A description and justification of the equipment configuration is given in the EMC Test Plan. The EUT was tested as described in the EMC Test Plan and was configured and operated in a manner consistent with its intended use. The EUT was connected to rated power and allowed to warm up to normal operating conditions. The placement of the EUT system components was guided by the test standard and selected to represent typical installation conditions.

In the case of an EUT that can operate in more than one configuration, preliminary testing was performed to determine the configuration that produced maximum radiation.

The final configuration was selected to produce worse case radiation and place the EUT in the most susceptible state. There were no deviations from the description of the Equipment Configuration given in the EMC Test Plan.

3.3 Operation Mode

A description and justification of the operation mode is given in the EMC Test Plan.

In the case of an EUT that can operate in more than one state, preliminary testing was performed to determine the operating mode that produced maximum radiation.

The final operating mode was selected to produce worse case radiation and place the EUT in the most susceptible state. There were no deviations from the description of the Operation Mode given in the EMC Test Plan.

4 Emissions

Testing was performed in accordance with 47 CFR Part 15, ANSI C63.4:2003, RSS-210 Issue 5. These test methods are listed under the laboratory's NVLAP Scope of Accreditation. This test measures the levels emanating from the EUT, thus evaluating the potential for the EUT to cause radio frequency interference to other electronic devices.

4.1 Channel Separation Part 15.247(a)(1)

Frequency hopping Systems shall have hopping channel carrier frequencies separated by a minimum of 25 kHz or the 20 dB bandwidth of the hopping channel, whichever is greater.

This test was not performed. No modifications were made to the circuitry, or software, that would alter the performance of the original EUT.

4.2 Pseudorandom Hopping Algorithm FCC Part 15.247(a)(1)

The system shall hop to channel frequencies that are selected from a pseudorandomly ordered list of hopping frequencies. Each frequency must be used equally on average by each transmitter. The system receivers shall have input bandwidths that match the hopping channel bandwidths of their transmitters and shall shift frequencies in synchronization with the transmitted signals.

The pseudo-random hop table is used to determine the transmitter's frequency hop sequence. The transmitter is slow hopping frequency system where the entire data packet is sent on a single channel. After sending a data packet, the transmitter uses the next channel in the pseudo-random hop table. Each frequency in the hop table is used before the transmitter will hop to a frequency already used. The receiver is a single IF system whose bandwidth is 330 kHz. When not synchronized to a transmitting device, the receiver is constantly hopping across the 25 channels scanning for a valid preamble from a transmitter. Once a valid preamble is detected, the receiver is synchronized to the transmitter and receives the data packet. After the transmission, the receiver returns to the scanning mode where it can look for another packet from either the same device or a different device.

This test was not performed. No modifications were made to the circuitry, or software, that would alter the performance of the original EUT.

4.3 Time of Occupancy FCC Part 15.247(a)(1)(i)

The occupancy time was measured as above. There were 4 hops at .099 seconds per hop for any 10 sec. Period. Time of occupancy equals number of hops multiplied by the duration of one hop.

This test was not performed. No modifications were made to the circuitry, or software, that would alter the performance of the original EUT.

4.4 Occupied Bandwidth FCC Part 15.247(a)(1)(i)

The maximum allowed 20 dB bandwidth of the hopping channel is 500 kHz.

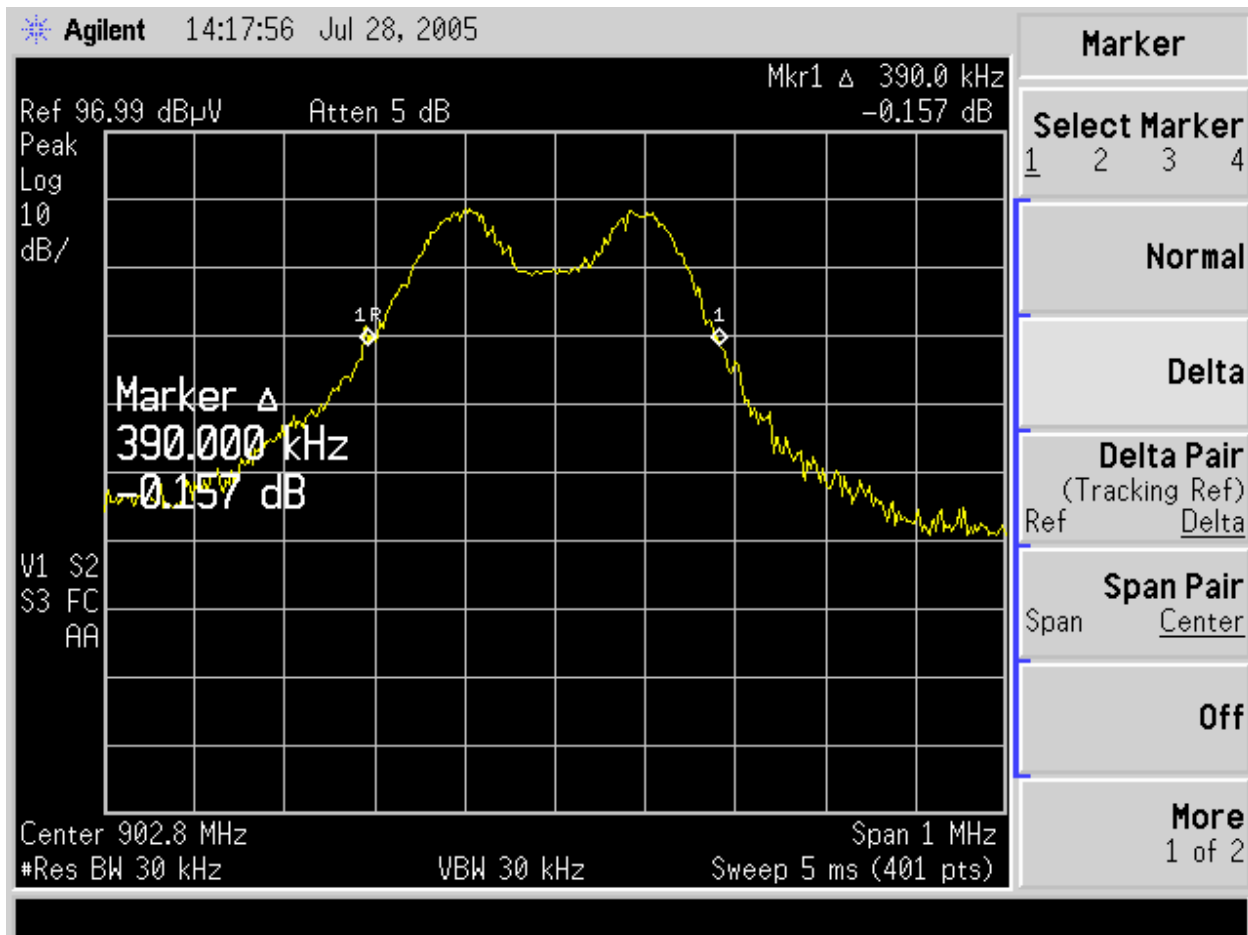


Figure 3 – CH1 Occupied Bandwidth

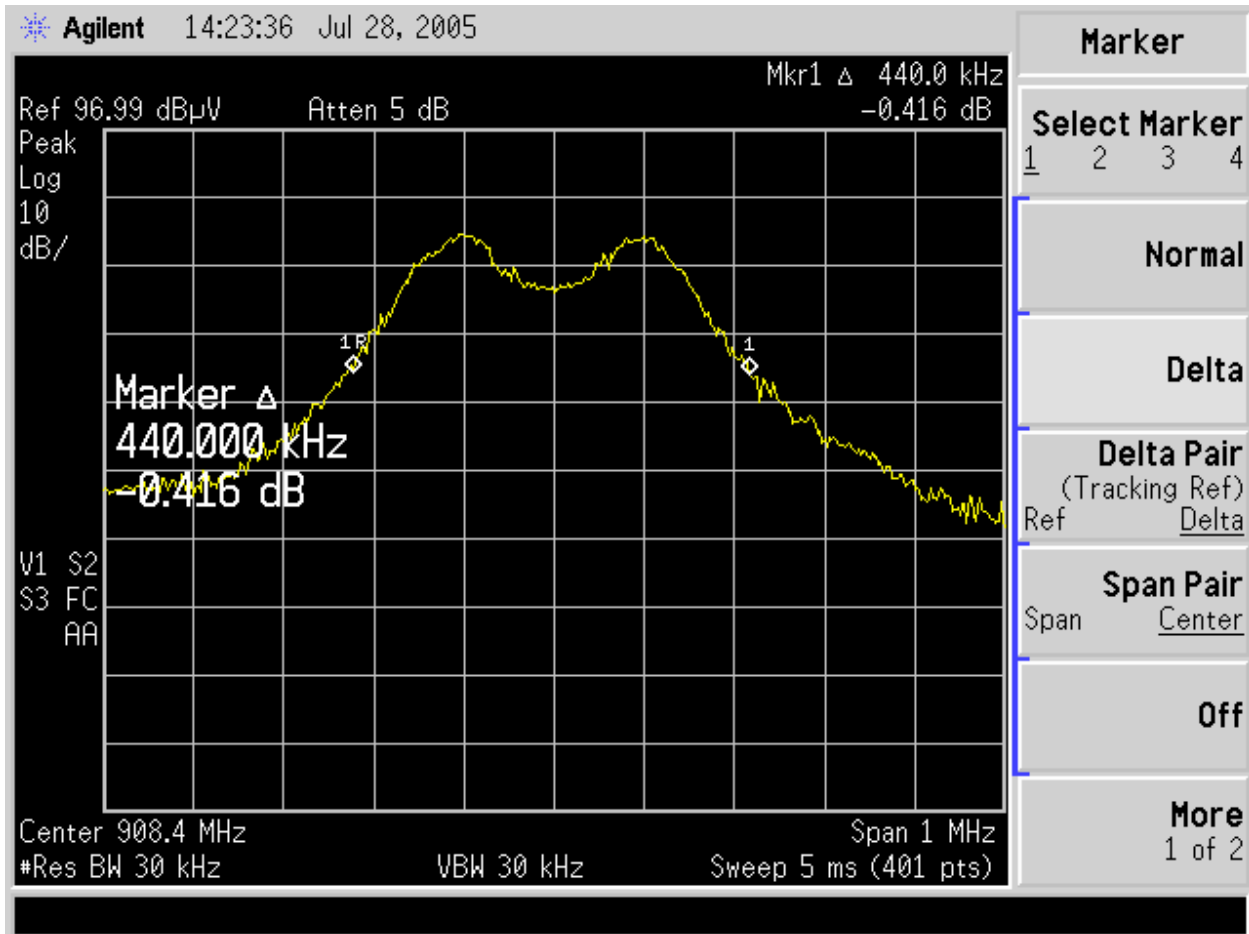


Figure 4 – CH15 Occupied Bandwidth

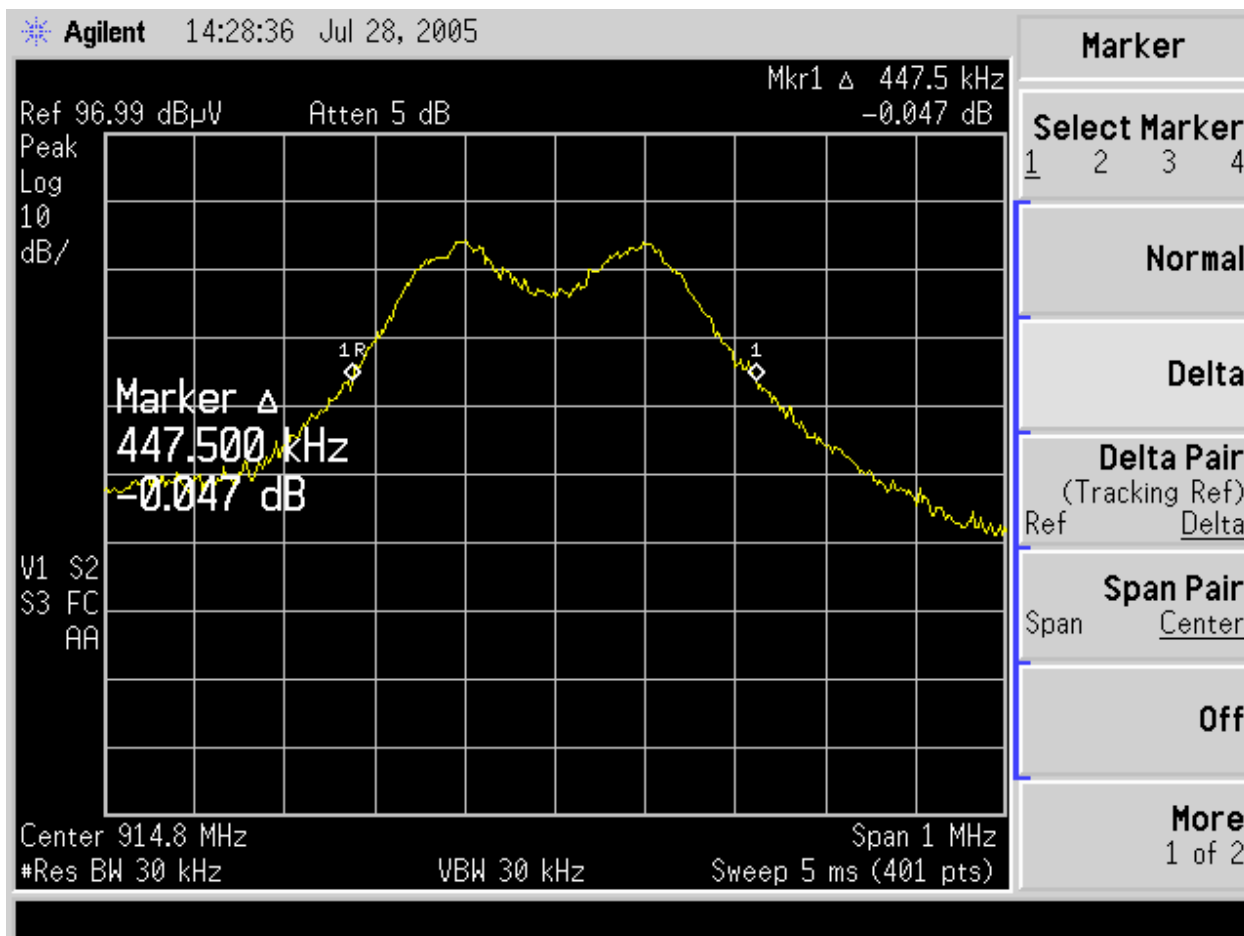


Figure 5 – CH31 Occupied Bandwidth

4.5 Peak Output Power FCC Part 15.247(b)(2)

The maximum peak output power of the intentional radiator shall not exceed 0.25 watts for systems employing less than 50 hopping channels, but at least 25 hopping channels. (Conducted Measurement)

The peak output power was measured at CH1, CH15, and at CH31. The measurement was made using a direct connection between the RF output of the EUT and the spectrum analyzer. After the measurement was made the cable loss and the attenuator was added to the measurement. The spectrum analyzer's resolution bandwidth was greater than the 20dB bandwidth of the modulated carrier and the video bandwidth was equal to the resolution bandwidth.

Test Setup



The antenna has not been changed since the original submittal. Radiated power measurements do not indicate a significant change in power. This would indicate that the conducted power has not change significantly; therefore, this test was not performed.

4.5.1 Antenna Gain

If peak power output was performed using the conducted method then the antenna gain will be stated.

The measurement was performed with out modulation. The transmitter under test was placed on a non-conductive table 80cm above the ground plane. The spectrum analyzer was tuned to the transmitter carrier frequency and the turntable was rotated 360 degrees about the vertical axis until the highest maximum signal was received. Then the receive antenna was raised and lowered 1 to 4 meters until the maximum signal was detected. Then the substitution dipole antenna and signal generator replaced the transmitter under test and both the receive and substitution dipole antenna were placed in the vertical polarization. The input signal to the substitution antenna was adjusted to the maximum signal received from the transmitter. The receive antenna was then raised and lowered to ensure the maximum signal was still received. The cable to the dipole was then removed and attached to a calibrated power meter to record the power level and added to the substitution dipole gain to obtain the EIRP level. Then the steps above were repeated for the horizontal polarization. The gain of the EUT antenna is the difference between the measured RF power at the RF port and the measured EIRP.

4.5.1.1 Results

The antenna has not been changed since the original submittal.

4.6 Spurious Emissions FCC Part 15.247(c)

4.6.1 Test Methodology

4.6.1.1 Preliminary Test

A test program that controls instrumentation and data logging was used to automate the preliminary RF emission test procedure. The frequency range of interest was divided into sub-ranges to yield a frequency resolution of approximately 300 kHz and provide a reading at each frequency for each 6° of turntable rotation. For each frequency sub-range the turntable was rotated 360° while peak emission data was recorded and plotted over the frequency range of interest in horizontal and vertical antenna polarization's.

Preliminary emission profile testing was performed inside the anechoic chamber. The EUT was placed on a 1.0m x 1.5m non-conductive table 80cm above the floor. The EUT was positioned as shown in the setup photographs. The receiving antenna was placed at a distance of 3m at a fixed height of 1m. Measurement equipment was located outside of the chamber. A video camera was placed inside the chamber to view the EUT.

4.6.1.2 Final Test

For each frequency measured, the peak emission was maximized by manipulating the receiving antenna from 1 to 4 meters above the ground plane and placing it at the position that produced the maximum signal strength reading. The turntable was then rotated through 360° while observing the peak signal and placing the EUT at the position that produced maximum radiation.

Final testing was performed on an NSA compliant test site. The EUT was placed on a 1.0m x 1.5m non-conductive table 80cm above the ground plane. The placement of EUT and cables were the same as for preliminary testing and is shown in the setup photographs.

4.6.1.3 Deviations

There were no deviations from this test methodology.

4.6.2 Test Results

As originally tested, the EUT was found to be compliant to the requirements of the test standard(s).

4.6.2.1 Radiated Emissions Outside the Frequency Band

In any 100kHz bandwidth outside the frequency band in which the spread spectrum or digitally modulated intentional radiator is operating, the radio frequency power that is produced by the intentional radiator shall be at least 20 dB below that in the 100 kHz bandwidth within the band that contains the highest level of desired power, based on radiated measurements.

SOP 1 Radiated Emissions

Tracking # 30561014.010 Page 1 of 1

EUT Name	Form 12S REX Meter	Date	22 July 2005
EUT Model	ZCC599A00000	Temp / Hum in	73 deg. F / 35 %rh
EUT Serial	05-289-244	Temp / Hum out	N/a
Standard	FCC 47 CFR Part 15, RSS-210 Issue 5	Line AC / Freq	120 VAC / 60 Hz
Dist/Ant Used	3 meters / SAS-516 (200MHz to 1GHz) 3115-2236 (1GHz to 10 GHz)	Performed by	Eugene Moses

Emission Freq (MHz)	ANT Polar (H/V)	ANT Pos (m)	Table Pos (deg)	FIM Value (dBuV)	Amp Gain (dB)	Cable Loss (dB)	ANT Factor (dB/m)	E-Field Value (dBuV/m)	20dB Below Fundamental (dBuV/m)	Spec Margin (dB)
---------------------	-----------------	-------------	-----------------	------------------	---------------	-----------------	-------------------	------------------------	---------------------------------	------------------

120 VAC / 60 Hz X Plane (The fundamental of the EUT was tested in all three planes and X Plane was worse case.)

Peak Measurements.

Fundamental CH 31

914.90	H	1	169 pk	89.42	0.00	3.38	23.50	116.29		
1829.60	H	1	314 pk	57.88	35.43	6.26	27.76	56.47	96.29	-39.82
914.70	V	1	47 pk	96.24	0.00	3.38	22.59	122.20		
1829.60	V	1.07	292 pk	60.63	35.43	6.26	27.82	59.28	102.20	-42.92

Fundamental CH 15

908.50	H	1	170 pk	89.88	0.00	3.38	23.40	116.66		
1816.00	H	1	296 pk	62.65	35.46	6.24	27.72	61.15	96.66	-35.51
908.50	V	1	57 pk	96.67	0.00	3.38	22.37	122.42		
1816.00	V	1	60 pk	63.66	35.46	6.24	27.77	62.21	102.42	-40.21

Fundamental CH 1

902.80	H	1	176 pk	89.27	0.00	3.36	23.40	116.03		
1806.00	H	1	298 pk	61.61	35.49	6.23	27.70	60.05	96.03	-35.98
902.70	V	1	48 pk	96.65	0.00	3.36	22.25	122.27		
1806.00	V	1	109 pk	63.14	35.49	6.23	27.74	61.62	102.27	-40.65

Spec Margin = E-Field Value - Limit, E-Field Value = FIM Value - Amp Gain + Cable Loss + ANT Factor ± Uncertainty

Combined Standard Uncertainty $u_c(y) = \pm 1.6\text{dB}$ Expanded Uncertainty $U = k u_c(y)$ $k = 2$ for 95% confidence

Notes:

RBW/VBW=100kHzRBW / 100kHzVBW

4.6.2.2 *Restricted band measurements*

Radiated emissions which fall in the restricted bands, as defined in 15.205(a), must also comply with the radiated emission limits specified in 15.209(a) (see 15.205(c)).

SOP 1 Radiated Emissions

Tracking # 30561014.010 Page 1 of 6

EUT Name	Form 12S REX Meter	Date	22 July 2005
EUT Model	ZCC599A00000	Temp / Hum in	73 deg. F / 35 %rh
EUT Serial	05-289-244	Temp / Hum out	N/a
Standard	FCC 47 CFR Part 15, RSS-210 Issue 5	Line AC / Freq	120 VAC / 60 Hz
Dist/Ant Used	3 meters / SAS-516 (200MHz to 1GHz) 3115-5770 (1GHz to 10 GHz)	Performed by	Eugene Moses

Emission Freq (MHz)	ANT Polar (H/V)	ANT Pos (m)	Table Pos (deg)	FIM Value (dBuV)	Amp Gain (dB)	Cable Loss (dB)	ANT Factor (dB/m)	E-Field Value (dBuV/m)	Spec Limit (dBuV/m)	Spec Margin (dB)
---------------------	-----------------	-------------	-----------------	------------------	---------------	-----------------	-------------------	------------------------	---------------------	------------------

120 VAC / 60 Hz X Plane (The fundamental of the EUT was tested in all three planes and X Plane was worse case.)

Fundamental CH 31

Spurious Emissions, Peak Measurements

2744.40	H	1	330 pk	47.55	35.34	7.88	29.63	49.72	74.00	-24.28
3659.20	H	1	10 pk	39.35	34.90	9.22	31.78	45.45	74.00	-28.55
4574.00	H	1	19 pk	41.91	35.17	10.71	33.07	50.51	74.00	-23.49
5488.80	H	1	0 pk	35.15	34.81	11.72	34.70	46.76	74.00	-27.24

Spurious Emissions, Average Measurements

2744.40	H	1	330 avg	41.93	35.34	7.88	29.63	44.10	54.00	-9.90
3659.20	H	1	10 avg	28.11	34.90	9.22	31.78	34.21	54.00	-19.79
4574.00	H	1	19 avg	33.13	35.17	10.71	33.07	41.73	54.00	-12.27
5488.80	H	1	0 avg	23.23	34.81	11.72	34.70	34.84	54.00	-19.16

Spec Margin = E-Field Value - Limit, E-Field Value = FIM Value - Amp Gain + Cable Loss + ANT Factor ± Uncertainty

Combined Standard Uncertainty $u_c(y) = \pm 1.6\text{dB}$ Expanded Uncertainty $U = ku_c(y)$ $k = 2$ for 95% confidence

Notes:

RBW/VBW=1MHz/1MHz for frequencies between 1Ghz to 10 GHz for peak measurements.

RBW/VBW=1MHz/10Hz for frequencies between 1Ghz to 10 GHz for average measurements.

SOP 1 Radiated Emissions

Tracking # 30561014.010 Page 2 of 6

EUT Name	Form 12S REX Meter	Date	22 July 2005
EUT Model	ZCC599A00000	Temp / Hum in	73 deg. F / 35 %rh
EUT Serial	05-289-244	Temp / Hum out	N/a
Standard	FCC 47 CFR Part 15, RSS-210 Issue 5	Line AC / Freq	120 VAC / 60 Hz
Dist/Ant Used	3 meters / SAS-516 (200MHz to 1GHz) 3115-5770 (1GHz to 10 GHz)	Performed by	Eugene Moses

Emission Freq (MHz)	ANT Polar (H/V)	ANT Pos (m)	Table Pos (deg)	FIM Value (dBuV)	Amp Gain (dB)	Cable Loss (dB)	ANT Factor (dB/m)	E-Field Value (dBuV/m)	Spec Limit (dBuV/m)	Spec Margin (dB)
---------------------	-----------------	-------------	-----------------	------------------	---------------	-----------------	-------------------	------------------------	---------------------	------------------

120 VAC / 60 Hz X Plane (The fundamental of the EUT was tested in all three planes and X Plane was worse case.)

Fundamental CH 31

Spurious Emissions, Peak Measurements

2744.40	V	1	31 pk	45.41	35.34	7.88	29.54	47.48	74.00	-26.52
3659.20	V	1	72 pk	39.58	34.90	9.22	31.71	45.62	74.00	-28.38
4574.00	V	1	275 pk	32.46	35.17	10.71	33.01	41.00	74.00	-33.00
5488.80	V	1	0 pk	36.89	34.81	11.72	34.59	48.39	74.00	-25.61

Spurious Emissions, Average Measurements

2744.40	V	1	31 avg	36.46	35.34	7.88	29.54	38.53	54.00	-15.47
3659.20	V	1	72 avg	28.88	34.90	9.22	31.71	34.92	54.00	-19.08
4574.00	V	1	275 avg	20.22	35.17	10.71	33.01	28.76	54.00	-25.24
5488.80	V	1	0 avg	23.42	34.81	11.72	34.59	34.92	54.00	-19.08

Spec Margin = E-Field Value - Limit, E-Field Value = FIM Value - Amp Gain + Cable Loss + ANT Factor ± Uncertainty

Combined Standard Uncertainty $u_c(y) = \pm 1.6\text{dB}$ Expanded Uncertainty $U = ku_c(y)$ $k = 2$ for 95% confidence

Notes:

RBW/VBW=1MHz/1MHz for frequencies between 1Ghz to 10 GHz for peak measurements.
 RBW/VBW=1MHz/10Hz for frequencies between 1Ghz to 10 GHz for average measurements.

SOP 1 Radiated Emissions

Tracking # 30561014.010 Page 3 of 6

EUT Name	Form 12S REX Meter	Date	22 July 2005
EUT Model	ZCC599A00000	Temp / Hum in	73 deg. F / 35 %rh
EUT Serial	05-289-244	Temp / Hum out	N/a
Standard	FCC 47 CFR Part 15, RSS-210 Issue 5	Line AC / Freq	120 VAC / 60 Hz
Dist/Ant Used	3 meters / SAS-516 (200MHz to 1GHz) 3115-5770 (1GHz to 10 GHz)	Performed by	Eugene Moses

Emission Freq (MHz)	ANT Polar (H/V)	ANT Pos (m)	Table Pos (deg)	FIM Value (dBuV)	Amp Gain (dB)	Cable Loss (dB)	ANT Factor (dB/m)	E-Field Value (dBuV/m)	Spec Limit (dBuV/m)	Spec Margin (dB)
---------------------	-----------------	-------------	-----------------	------------------	---------------	-----------------	-------------------	------------------------	---------------------	------------------

120 VAC / 60 Hz X Plane (The fundamental of the EUT was tested in all three planes and X Plane was worse case.)

Fundamental CH 15

Spurious Emissions, Peak Measurements

2725.00	H	1	265 pk	47.21	35.35	7.83	29.57	49.27	74.00	-24.73
3633.00	H	1	0 pk	38.40	34.96	9.19	31.70	44.33	74.00	-29.67
4541.00	H	1	10 pk	43.24	35.13	10.68	32.95	51.73	74.00	-22.27
5450.00	H	1	311 pk	37.19	34.76	11.63	34.69	48.75	74.00	-25.25

Spurious Emissions, Average Measurements

2725.00	H	1	265 avg	39.90	35.35	7.83	29.57	41.96	54.00	-12.04
3633.00	H	1	0 avg	26.50	34.96	9.19	31.70	32.43	54.00	-21.57
4541.00	H	1	10 avg	33.64	35.13	10.68	32.95	42.13	54.00	-11.87
5450.00	H	1	311 avg	25.00	34.76	11.63	34.69	36.56	54.00	-17.44

Spec Margin = E-Field Value - Limit, E-Field Value = FIM Value - Amp Gain + Cable Loss + ANT Factor ± Uncertainty

Combined Standard Uncertainty $u_c(y) = \pm 1.6\text{dB}$ Expanded Uncertainty $U = k u_c(y)$ $k = 2$ for 95% confidence

Notes:

RBW/VBW=1MHz/1MHz for frequencies between 1Ghz to 10 GHz for peak measurements.

RBW/VBW=1MHz/10Hz for frequencies between 1Ghz to 10 GHz for average measurements.

SOP 1 Radiated Emissions

Tracking # 30561014.010 Page 4 of 6

EUT Name	Form 12S REX Meter	Date	22 July 2005
EUT Model	ZCC599A00000	Temp / Hum in	73 deg. F / 35 %rh
EUT Serial	05-289-244	Temp / Hum out	N/a
Standard	FCC 47 CFR Part 15, RSS-210 Issue 5	Line AC / Freq	120 VAC / 60 Hz
Dist/Ant Used	3 meters / SAS-516 (200MHz to 1GHz) 3115-5770 (1GHz to 10 GHz)	Performed by	Eugene Moses

Emission Freq (MHz)	ANT Polar (H/V)	ANT Pos (m)	Table Pos (deg)	FIM Value (dBuV)	Amp Gain (dB)	Cable Loss (dB)	ANT Factor (dB/m)	E-Field Value (dBuV/m)	Spec Limit (dBuV/m)	Spec Margin (dB)
---------------------	-----------------	-------------	-----------------	------------------	---------------	-----------------	-------------------	------------------------	---------------------	------------------

120 VAC / 60 Hz X Plane (The fundamental of the EUT was tested in all three planes and X Plane was worse case.)

Fundamental CH 15

Spurious Emissions, Peak Measurements

2725.00	V	1	317 pk	44.64	35.35	7.83	29.49	46.61	74.00	-27.39
3634.00	V	1	26 pk	39.50	34.96	9.19	31.65	45.38	74.00	-28.62
4542.00	V	1	266 pk	45.94	35.13	10.68	32.92	54.40	74.00	-19.60
5450.00	V	1	26 pk	37.37	34.76	11.63	34.56	48.80	74.00	-25.20

Spurious Emissions, Average Measurements

2725.00	V	1	317 avg	33.41	35.35	7.83	29.49	35.38	54.00	-18.62
3634.00	V	1	26 avg	28.51	34.96	9.19	31.65	34.39	54.00	-19.61
4542.00	V	1	266 avg	38.79	35.13	10.68	32.92	47.25	54.00	-6.75
5450.00	V	1	26 avg	26.49	34.76	11.63	34.56	37.92	54.00	-16.08

Spec Margin = E-Field Value - Limit, E-Field Value = FIM Value - Amp Gain + Cable Loss + ANT Factor ± Uncertainty

Combined Standard Uncertainty $u_c(y) = \pm 1.6\text{dB}$ Expanded Uncertainty $U = ku_c(y)$ $k = 2$ for 95% confidence

Notes:

RBW/VBW=1MHz/1MHz for frequencies between 1Ghz to 10 GHz for peak measurements.

RBW/VBW=1MHz/10Hz for frequencies between 1Ghz to 10 GHz for average measurements.

SOP 1 Radiated Emissions

Tracking # 30561014.010 Page 5 of 6

EUT Name	Form 12S REX Meter	Date	22 July 2005
EUT Model	ZCC599A00000	Temp / Hum in	73 deg. F / 35 %rh
EUT Serial	05-289-244	Temp / Hum out	N/a
Standard	FCC 47 CFR Part 15, RSS-210 Issue 5	Line AC / Freq	120 VAC / 60 Hz
Dist/Ant Used	3 meters / SAS-516 (200MHz to 1GHz) 3115-5770 (1GHz to 10 GHz)	Performed by	Eugene Moses

Emission Freq (MHz)	ANT Polar (H/V)	ANT Pos (m)	Table Pos (deg)	FIM Value (dBuV)	Amp Gain (dB)	Cable Loss (dB)	ANT Factor (dB/m)	E-Field Value (dBuV/m)	Spec Limit (dBuV/m)	Spec Margin (dB)
---------------------	-----------------	-------------	-----------------	------------------	---------------	-----------------	-------------------	------------------------	---------------------	------------------

120 VAC / 60 Hz X Plane (The fundamental of the EUT was tested in all three planes and X Plane was worse case.)

Fundamental CH 1

Spurious Emissions, Peak Measurements

2708.00	H	1.12	57 pk	46.09	35.34	7.78	29.52	48.05	74.00	-25.95
3611.00	H	1	337 pk	39.53	34.99	9.13	31.63	45.30	74.00	-28.70
4514.00	H	1	50 pk	38.64	35.11	10.57	33.93	48.03	74.00	-25.97
5417.00	H	1	310 pk	37.29	34.75	11.59	34.68	48.82	74.00	-25.18

Spurious Emissions, Average Measurements

2708.00	H	1.12	57 avg	37.81	35.34	7.78	29.52	39.77	54.00	-14.23
3611.00	H	1	337 avg	26.37	34.99	9.13	31.63	32.14	54.00	-21.86
4514.00	H	1	50 avg	32.44	35.11	10.57	32.85	40.75	54.00	-13.25
5417.00	H	1	310 avg	25.34	34.75	11.59	34.68	36.87	54.00	-17.13

Spec Margin = E-Field Value - Limit, E-Field Value = FIM Value - Amp Gain + Cable Loss + ANT Factor ± Uncertainty

Combined Standard Uncertainty $u_c(y) = \pm 1.6\text{dB}$ Expanded Uncertainty $U = k u_c(y)$ $k = 2$ for 95% confidence

Notes:

RBW/VBW=1MHz/1MHz for frequencies between 1Ghz to 10 GHz for peak measurements.

RBW/VBW=1MHz/10Hz for frequencies between 1Ghz to 10 GHz for average measurements.

SOP 1 Radiated Emissions

Tracking # 30561014.010 Page 6 of 6

EUT Name	Form 12S REX Meter	Date	22 July 2005
EUT Model	ZCC599A00000	Temp / Hum in	73 deg. F / 35 %rh
EUT Serial	05-289-244	Temp / Hum out	N/a
Standard	FCC 47 CFR Part 15, RSS-210 Issue 5	Line AC / Freq	120 VAC / 60 Hz
Dist/Ant Used	3 meters / SAS-516 (200MHz to 1GHz) 3115-5770 (1GHz to 10 GHz)	Performed by	Eugene Moses

Emission Freq (MHz)	ANT Polar (H/V)	ANT Pos (m)	Table Pos (deg)	FIM Value (dBuV)	Amp Gain (dB)	Cable Loss (dB)	ANT Factor (dB/m)	E-Field Value (dBuV/m)	Spec Limit (dBuV/m)	Spec Margin (dB)
---------------------	-----------------	-------------	-----------------	------------------	---------------	-----------------	-------------------	------------------------	---------------------	------------------

120 VAC / 60 Hz X Plane (The fundamental of the EUT was tested in all three planes and X Plane was worse case.)

Fundamental CH 1

2709.00	V	1.05	35 pk	51.38	35.34	7.78	29.44	53.26	74.00	-20.74
3611.00	V	1	15 pk	42.02	34.99	9.13	31.59	47.75	74.00	-26.25
4515.00	V	1	262 pk	44.87	35.11	10.57	32.84	53.17	74.00	-20.83
5416.00	V	1	24 pk	38.96	34.75	11.59	34.53	50.34	74.00	-23.66

Spurious Emissions, Average Measurements

2709.00	V	1.05	35 avg	36.36	35.34	7.78	29.44	38.24	54.00	-15.76
3611.00	V	1	15 avg	28.37	34.99	9.13	31.59	34.10	54.00	-19.90
4515.00	V	1	262 avg	37.70	35.11	10.58	32.84	46.01	54.00	-7.99
5416.00	V	1	24 avg	26.92	34.75	11.59	34.53	38.30	54.00	-15.70

Spec Margin = E-Field Value - Limit, E-Field Value = FIM Value - Amp Gain + Cable Loss + ANT Factor ± Uncertainty

Combined Standard Uncertainty $u_c(y) = \pm 1.6\text{dB}$ Expanded Uncertainty $U = ku_c(y)$ $k = 2$ for 95% confidence

Notes:

RBW/VBW=1MHz/1MHz for frequencies between 1Ghz to 10 GHz for peak measurements.
 RBW/VBW=1MHz/10Hz for frequencies between 1Ghz to 10 GHz for average measurements.

4.7 Frequency Hopping Spread Spectrum Systems FCC Part 15.247(g)

Frequency hopping spread spectrum systems are not required to employ all available hopping channels during each transmission. However, the system, consisting of both the transmitter and the receiver, must be designed to comply with all of the regulations in this section should the transmitter be presented with a continuous data (or information) stream. In addition, a system employing short transmission bursts must comply with the definition of a frequency hopping system and must distribute its transmissions over the minimum number of hopping channels specified in this section.

When the REX Meter is presented with a continuous data stream, each 97.3 msec packet transmitted by the meter will be sent on the next channel in the 25-channel pseudo random list. When presented with a continuous data stream, the REX meter adheres to the 0.4 second dwell time for each 10 second window requirement. The REX Meter always distributes its transmissions across all 25 channels, and does not re-use a channel again until a transmission has occurred on each of the other 24 channels.

4.8 Incorporation of Intelligence within a Frequency Hopping Spread Spectrum System FCC Part 15.247(h)

The incorporation of intelligence within a frequency hopping spread spectrum system that permits the system to recognize other users within the spectrum band so that it individually and independently chooses and adapts its hopsets to avoid hopping on occupied channels is permitted. The coordination of frequency hopping systems in any other manner for the express purpose of avoiding the simultaneous occupancy of individual hopping frequencies by multiple transmitters is not permitted.

The REX meter does not attempt to recognize other users or interferers within the spectrum band and then attempt to select which channels to use. The REX Meter always distributes its transmissions across the same 25 channels. A channel is not re-used until a transmission has occurred on each of the other 24 channels.

4.9 Frequency Stability FCC Part 15.215(c)

The requirement to contain the 20 dB bandwidth of the emission within the specified frequency band includes effects from frequency sweeping, frequency hopping and other modulation techniques that may be employed as well as the frequency stability of the transmitter over expected variations in temperature and supply voltage.

4.9.1 Containment of the Emission during Variations in Temperature

The EUT was placed in an environmental temperature test chamber, supplied with the normal AC voltage, and with an antenna attached to the output port. If the antenna is an adjustable length antenna, it will be fully extended. The monitoring device (ie. Spectrum analyzer) was then attached to a receive antenna placed 15 cm away from the EUT via coaxial cable.

The temperature inside the chamber is then raised to the highest temperature specified and allowed sufficient time for the temperature of the chamber to stabilize. While maintaining a constant temperature inside the environmental chamber, the carrier signal was then measured 40 min after temperature

stabilization. Then the above process is repeated for the lowest temperature specified and 10 degree Centigrade increments between the extremes thereafter.

Results

This test was not performed. No modifications were made to the circuitry, or software, that would alter the performance of the original EUT.

4.9.2 Containment of the Emission during Variations in Voltage

This test was not performed. No modifications were made to the circuitry, or software, that would alter the performance of the original EUT.

4.9.3 Band-Edge Compliance

Intentional radiators operating under the alternative provisions to the general emission limits, as contained in §§ 15.217 through 15.257 and in Subpart E of this part, must be designed to ensure that the 20 dB bandwidth of the emission, or whatever bandwidth may otherwise be specified in the specific rule section under which the equipment operates, is contained within the frequency band designated in the rule section under which the equipment is operated. The requirement to contain the designated bandwidth of the emission within the specified frequency band includes the effects from frequency sweeping, frequency hopping and other modulation techniques that may be employed as well as the frequency stability of the transmitter over expected variations in temperature and supply voltage. If a frequency stability is not specified in the regulations, it is recommended that the fundamental emission be kept within at least the central 80% of the permitted band in order to minimize the possibility of out-of-band operation.

Center Frequency = 902.8 MHz

Span = 1 MHz

Frequency Resolution= 100 KHz per division

Transmitter Lower Band-Edge = ~902. 6 MHz at -20 dB

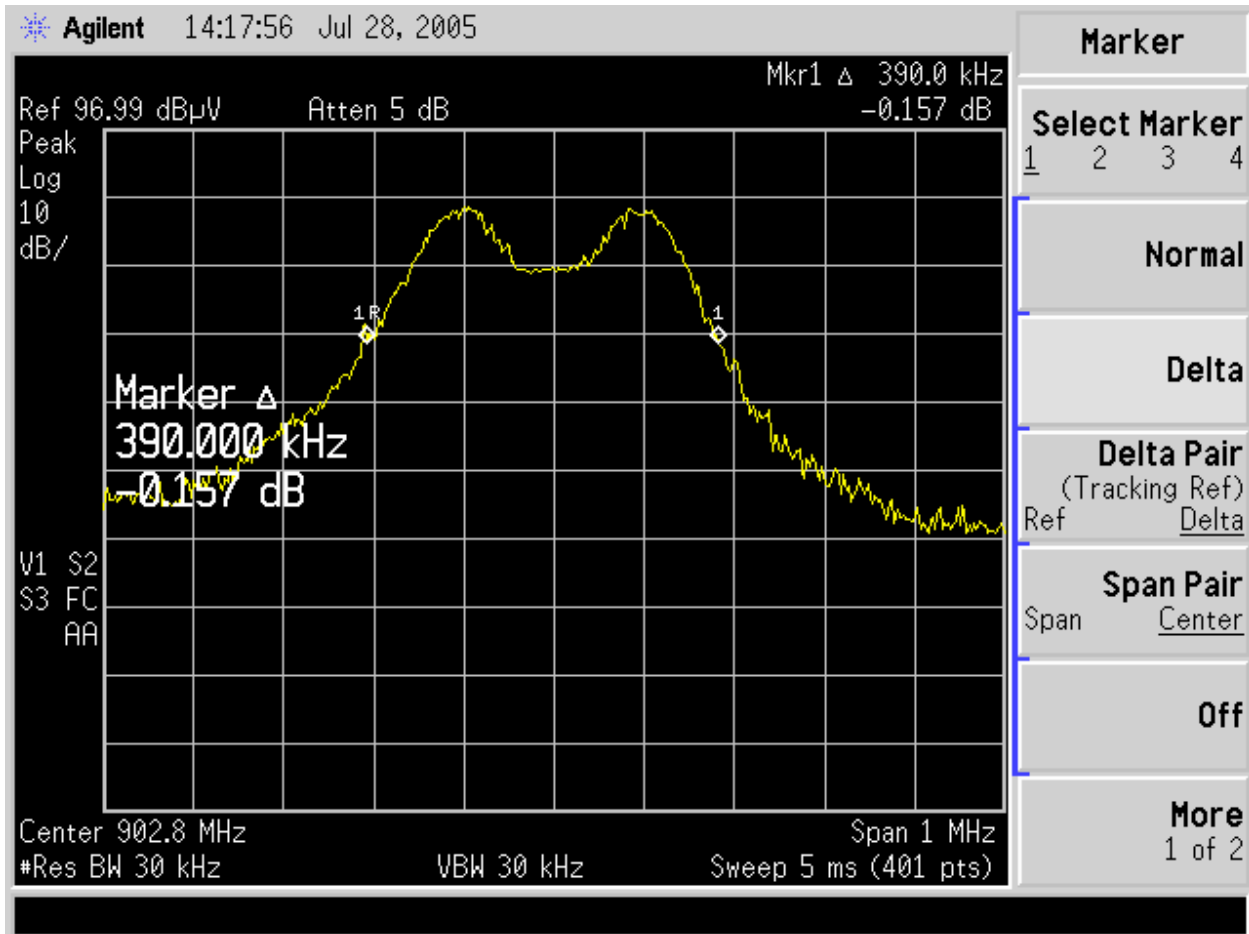


Figure 6 – Band-Edge Compliance (Channel 1/902.8 MHz)

4.9.4 Photos

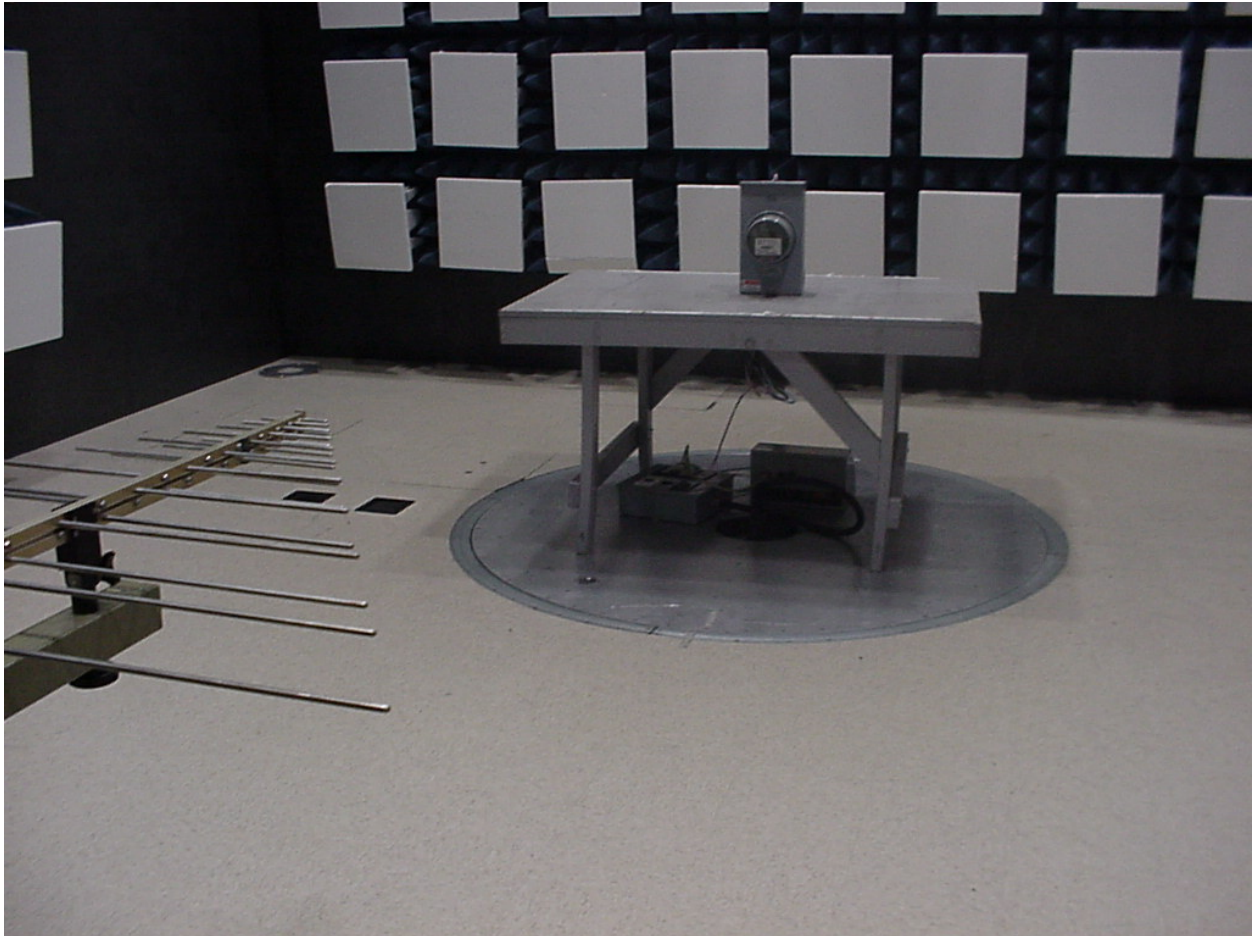


Figure 7 - Radiated Emissions Test Setup (Chamber – Front, X orientation)

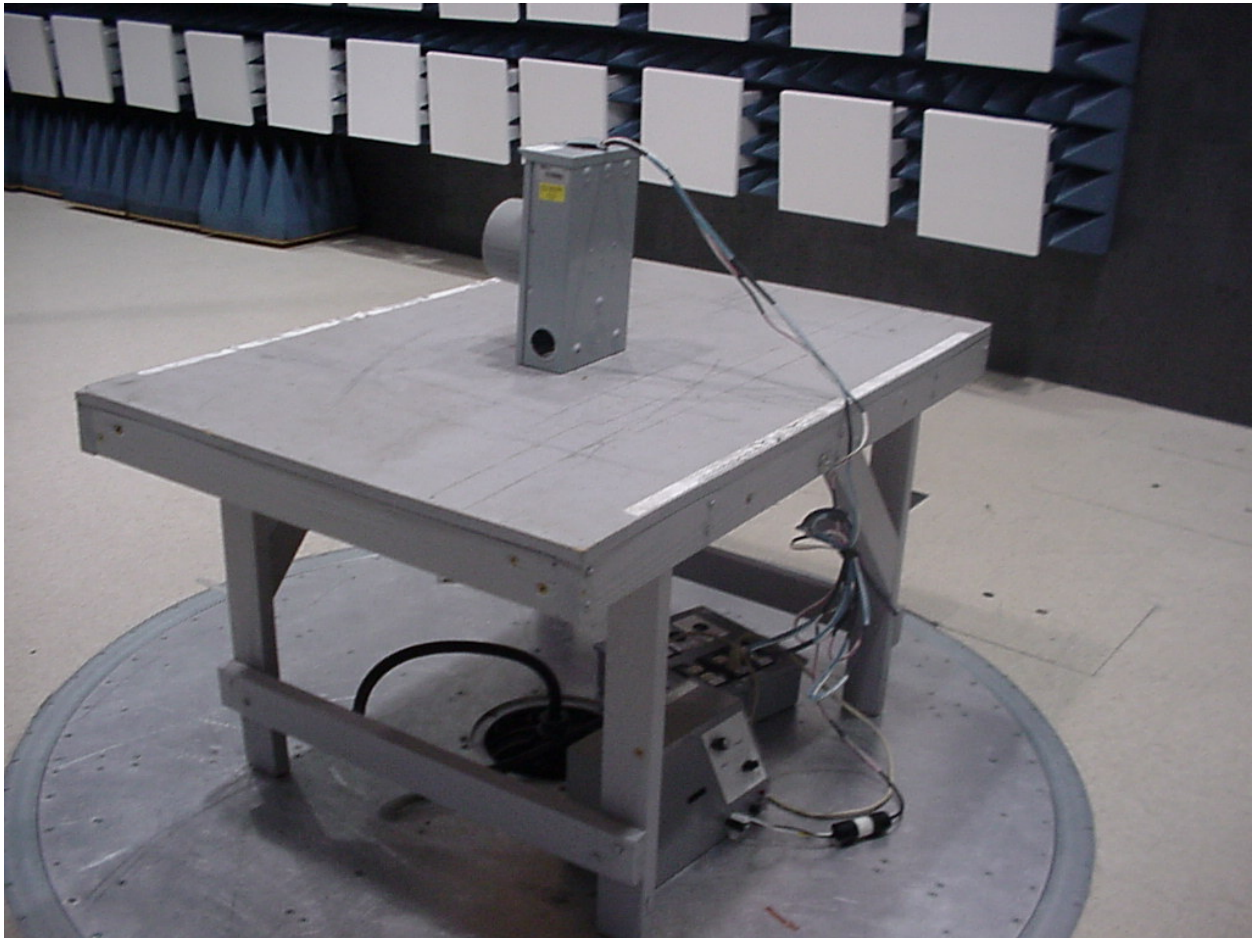


Figure 8 - Radiated Emissions Test Setup (Chamber – Back, X orientation)

4.9.5 Sample Calculation

The field strength is calculated by subtracting the Amplifier Gain and adding the Cable Loss and Antenna Correction Factor to the measured reading. The basic equation is as follows:

$$\text{Field Strength (dB}\mu\text{V/m)} = \text{FIM} - \text{AMP} + \text{CBL} + \text{ACF}$$

Where: FIM = Field Intensity Meter (dB μ V)
AMP = Amplifier Gain (dB)
CBL = Cable Loss (dB)
ACF = Antenna Correction Factor (dB/m)

$$\mu\text{V/m} = 10^{\frac{\text{dB}\mu\text{V/m} - 20}{20}}$$

4.10 Conducted Emissions

Testing was performed in accordance with 47 CFR Part 15.207, ANSI C63.4:2003, RSS-210 Issue 5. These test methods are listed under the laboratory's NVLAP Scope of Accreditation.

This test measures the levels emanating from the EUT, thus evaluating the potential for the EUT to cause radio frequency interference to other electronic devices.

4.10.1 Test Methodology

A test program that controls instrumentation and data logging was used to automate the AC Power Line Conducted emission test procedure. The frequency range of interest was divided into sub-ranges such as to yield a frequency resolution of 9 kHz. For each frequency sub-range, each phase and neutral of the AC power line were measured with respect to ground. Measurements were performed using a set of 50 μ H / 50 Ω LISNs.

Testing is either performed in the anechoic chamber or on PLC Site 2. The setup photographs clearly identify which site was used. The vertical ground plane used in the anechoic chamber is a 2m x 2m wooden frame that is covered with ¼ inch hardware cloth and is bonded to the horizontal ground plane.

In the case of tabletop equipment, the EUT is placed on a 1.0m x 1.5m non-conductive table 80cm above the ground plane and 40cm from a vertical ground reference plane. The rear of the EUT was positioned flush with the backside of the table and directly over the LISNs. The power and I/O cables were routed over the edge of the table and bundled approximately 40cm from the ground plane. Support equipment was powered from a separate LISN.

4.10.1.1 Deviations

There were no deviations from this test methodology.

4.10.2 Test Results

Section 4.10.2.1 lists the final measurement data under the worst case operating modes, configurations, and/or cable positions. It also reflects the results including any modifications and/or special accessories listed in Sections 1.4 and 1.5.

As originally tested, the EUT was found to be compliant to the requirements of the test standard(s).

Plots of the EUT's AC Line Conducted emissions are contained in the following sections. The plots show peak and/or average emissions and the corresponding peak and/or average limits. If the peak emissions are below the average limit, then the EUT is considered to pass and no average measurements are made. If the peak emissions are below the quasi-peak limit and the average emissions are below the average limit, then the EUT is considered to pass and no further measurements are made. Otherwise, individual frequencies are measured and compared to the corresponding limit for the detector used (quasi-peak or average).

4.10.2.1 Final Data

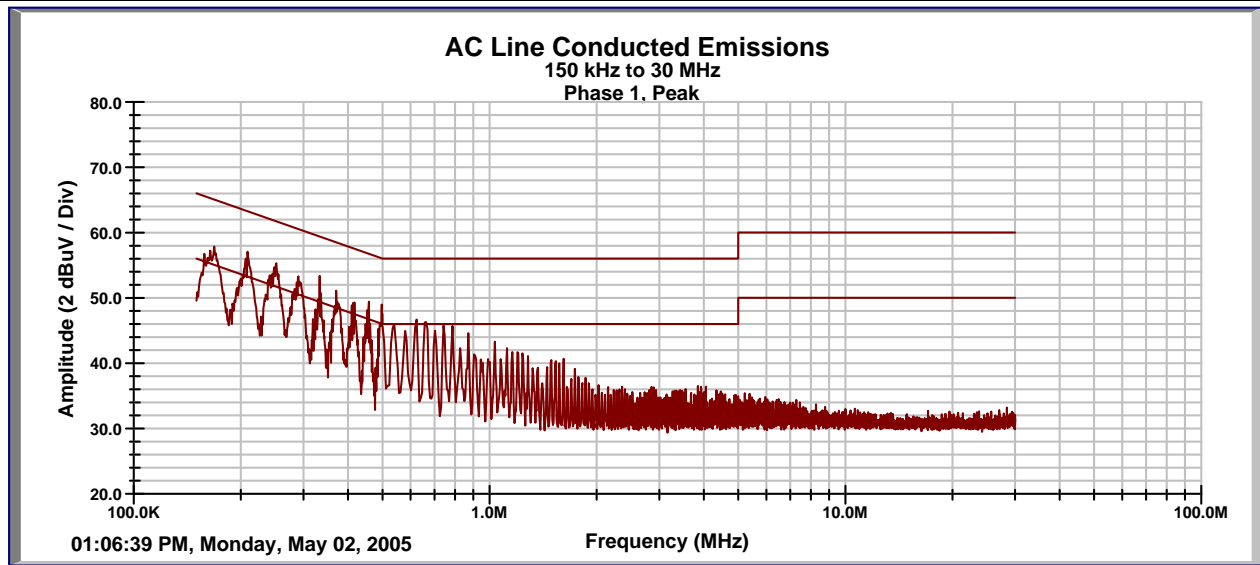
The data recorded in this section contains the final results under the worst-case conditions and with any modifications or special accessories implemented as the manufacturer intends.

SOP 2 Conducted Emissions

Tracking # 30561014.010 Page 1 of 2

EUT Name	Form 12S REX Meter	Date	2 May 2005
EUT Model	ZCC599A00000	Temperature	72 Deg. F
EUT Serial	None	Humidity	40% RH
Standard	FCC 47 CFR Part 15, RSS-210 Issue 5	Line AC /Freq	120 VAC / 60 Hz
LISNs Used	5, 6	Performed by	Eugene Moses

Configuration



Emission Freq (MHz)	Line ID (1,2,3,N)	FIM Quasi (dBuV)	FIM Ave (dBuV)	Cable Loss (dB)	LISN + T Limiter (dB)	Quasi Limit (dBuV)	Ave Limit (dBuV)	Quasi Spec Margin (dB)	Ave Spec Margin (dB)
0.17	1	44.56	38.69	0.01	10.07	64.96	54.96	-10.32	-6.19
0.21	1	40.49	33.09	0.01	10.06	63.17	53.17	-12.60	-10.00
0.25	1	40.25	35.30	0.01	10.06	61.76	51.76	-11.44	-6.39
0.29	1	41.84	37.21	0.01	10.06	60.52	50.52	-8.61	-3.24
0.37	1	38.82	34.82	0.01	10.06	58.46	48.46	-9.56	-3.56
0.41	1	36.79	31.56	0.02	10.06	57.57	47.57	-10.70	-5.93
0.46	1	33.62	24.65	0.02	10.06	56.77	46.77	-13.06	-12.03
0.50	1	33.50	23.00	0.01	10.06	56.05	46.05	-12.48	-12.98
0.75	1	31.68	27.19	0.02	10.04	56.00	46.00	-14.25	-8.74

Quasi Spec Margin = Quasi FIM + Cable Loss + LISN CF - Quasi Limit ± Uncertainty

Ave Spec Margin = Ave FIM + Cable Loss + LISN CF - Ave Limit ± Uncertainty

Combined Standard Uncertainty $u_c(y) = \pm 1.2\text{dB}$ Expanded Uncertainty $U = ku_c(y)$ $k = 2$ for 95% confidence

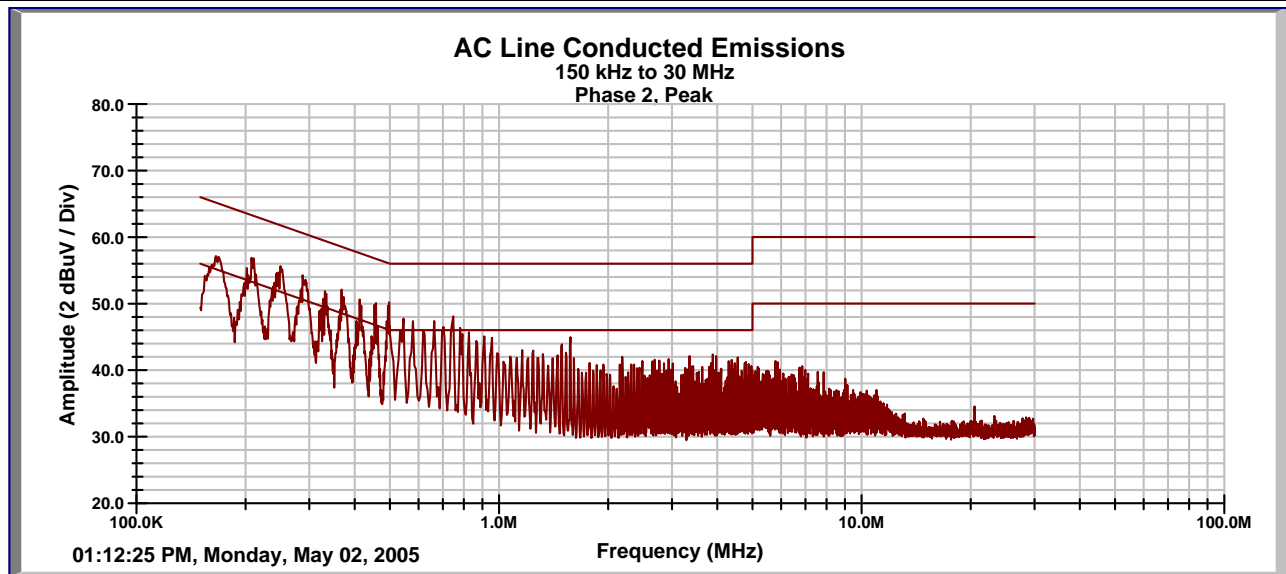
Notes:

SOP 2 Conducted Emissions

Tracking # 30561014.010 Page 2 of 2

EUT Name	Form 12S REX Meter	Date	2 May 2005
EUT Model	ZCC599A00000	Temperature	72 Deg. F
EUT Serial	None	Humidity	40% RH
Standard	FCC 47 CFR Part 15, RSS-210 Issue 5	Line AC /Freq	120 VAC / 60 Hz
LISNs Used	5, 6	Performed by	Eugene Moses

Configuration



Emission Freq (MHz)	Line ID (1,2,3,N)	FIM Quasi (dBuV)	FIM Ave (dBuV)	Cable Loss (dB)	LISN + T Limiter (dB)	Quasi Limit (dBuV)	Ave Limit (dBuV)	Quasi Spec Margin (dB)	Ave Spec Margin (dB)
0.17	2	43.06	35.96	0.01	10.04	65.01	55.01	-11.89	-8.99
0.21	2	41.28	35.25	0.01	10.04	63.21	53.21	-11.87	-7.90
0.25	2	40.05	35.40	0.01	10.04	61.76	51.76	-11.66	-6.31
0.29	2	42.38	37.87	0.01	10.04	60.52	50.52	-8.10	-2.61
0.36	2	33.86	24.16	0.01	10.04	58.73	48.73	-14.82	-14.52
0.38	2	35.84	31.71	0.01	10.04	58.39	48.39	-12.50	-6.63
0.42	2	33.17	27.60	0.02	10.04	57.45	47.45	-14.22	-9.79
0.46	2	32.70	23.42	0.02	10.03	56.75	46.75	-13.99	-13.27
0.74	2	33.91	29.46	0.02	10.01	56.00	46.00	-12.06	-6.51

Quasi Spec Margin = Quasi FIM + Cable Loss + LISN CF - Quasi Limit ± Uncertainty

Ave Spec Margin = Ave FIM + Cable Loss + LISN CF - Ave Limit ± Uncertainty

Combined Standard Uncertainty $u_c(y) = \pm 1.2\text{dB}$ Expanded Uncertainty $U = ku_c(y)$ $k = 2$ for 95% confidence

Notes:

4.10.3 Photos



Figure 9 - Conducted Emissions Test Setup (Front)

4.10.4 Sample Calculation

The signal strength is calculated by adding the LISN Correction Factor and Cable Loss to the measured reading. The basic equation is as follows:

$$\text{Field Strength (dB}\mu\text{V/m)} = \text{FIM} + \text{CBL} + \text{LCF}$$

Where: FIM = Field Intensity Meter (dB μ V)

CBL = Cable Loss (dB)

LCF = LISN Loss (dB)

$$\mu\text{V/m} = 10^{\frac{\text{dB}\mu\text{V/m}}{20}}$$

5 Test Equipment Use List

Equipment	Manufacturer	Model #	Serial/Inst #	Last Cal dd/mm/yy	Next Cal dd/mm/yy
SOP 1 - Radiated Emissions (5 Meter Chamber)					
Ant. Biconical	EMCO	3110B	3367	24-Feb-05	24-Feb-06
Ant. Log Periodic	AH Systems	SAS-516	133	7-Feb-05	7-Feb-06
Cable, Coax	Andrew	FSJ1-50A	030	18-Jan-05	18-Jan-06
Cable, Coax	Andrew	FSJ1-50A	045	18-Jan-05	18-Jan-06
Chamber, Semi-Anechoic	Braden Shielding	5 meter	A67631	27-Jan-04	27-Jan-05
Data Table, EMCWin	TUV Rheinland	EMCWin.dll	002	6-Jan-02	6-Jan-06
Spectrum Analyzer	Agilent Tec.	E7405A	US39440157	3-Aug-05	3-Aug-06

SOP 2 - Conducted Emissions (AC/DC and Signal I/O)					
Cable, Coax	Belden	RG-213	004	18-Jan-05	18-Jan-06
LISN (5) 50mH/50Ω	Solar Electronics	8028-50-TS-24	990441	5-Aug-05	5-Aug-06
LISN (6) 50mH/50Ω	Solar Electronics	8028-50-TS-24	990442	5-Aug-05	5-Aug-06
LISN Selection Box	TUV Rheinland	CFL-9206	1650	11-May-04	11-May-05
Spectrum Analyzer	Agilent Tec.	E7405A	US39440157	3-Aug-05	3-Aug-06

General Laboratory Equipment					
Meter, Multi	Fluke	79-3	69200606	5-Aug-05	5-Aug-06
Meter, Temp/Humid/Barom	Fisher	02-400	01	20-Aug-04	20-Aug-05

* Calibration of equipment past due for re-calibration will be performed expeditiously. If any equipment is found to be out of tolerance at that time, affected customers will be notified accordingly.

6 EMC Test Plan

EMC TEST PLAN FOR THE ELSTER ELECTRICITY REX METER

TUV QUOTE #: WROO-5KRQVE-1

REVISION DATE: AUGUST 10, 2005

TABLE OF CONTENTS

1.0	INTRODUCTION	33
2.0	CUSTOMER	33
3.0	EQUIPMENT UNDER TEST (EUT)	34
3.1	TECHNICAL DESCRIPTION	34
3.1.1	Device Type.....	34
3.1.2	Electronic Assembly Description	35
3.1.2.1	Description of Circuit Function	35
3.1.3	Rf Channel Plan.....	39
3.2	CONFIGURATION(S).....	40
3.3	OPERATING CONDITIONS	42
3.3.1	Firmware and Software	42
3.3.2	Mode(s)	42
3.3.3	Testing the REX Meter	42
3.3.3.1	Required Equipment	42
3.3.4	Test Setup.....	43
3.3.4.1	MeterExplorer Setup.....	43
3.3.5	Running MeterExplorer	43
3.3.5.1	MeterExplorer Properties.....	43
3.3.5.2	Using MeterExplorer.....	45
3.3.6	Description of Test Modes in the REX Meter.....	46
3.3.6.1	Constant Transmit Modes Using MF_041_RADIO_TEST.....	46
3.3.6.1.1	Constant Transmit – Unmodulated Data	47
3.3.6.1.2	Constant Transmit – Modulated Data.....	47
3.3.6.2	Test Modes Controlled by Parameters in MT-224.....	47
3.3.6.2.1	Constant Transmit – Channel Hopping	47
3.3.6.2.2	Constant Receive Mode.....	48
3.3.6.3	Normal Operation	49
3.4	PERFORMANCE CRITERIA (REQUIRED FOR IMMUNITY TESTING ONLY).....	49
3.5	POWER REQUIREMENTS	50

7 Introduction

This manufacturer-supplied document provides a description of the Equipment Under Test (EUT), configuration(s), operating condition(s), and performance acceptance criteria. It is intended to provide the test laboratory with the essential information needed to perform the requested testing.

8 Customer

The information in the following tables is required, as it should appear in the final test report.

Table 2 – Manufacturer Information

Company Name:	Elster Electricity, LLC
Street Address:	208 South Rogers Lane
City, State, Zip Code:	Raleigh, NC 27610
Tel:	919-212-4700
Fax:	919-212-5108

Table 3 – Technical Contact Information

Contact Name	Telephone	Fax	Email address
Bob Mason	919-212-5086	919-250-5486	robert.t.mason@us.abb.com

9 Equipment Under Test (EUT)

The information provided in the following table is listed as it should appear in the final report.

Table 4 – EUT Designation

EUT	Model Name	Model Number (Elster Style Number)
Form 1S REX Meter	REX Meter	ZCA32000000
Form 2S REX Meter	REX Meter	ZCC32000000
Form 3S REX Meter	REX Meter	ZCA22000000
Form 4S REX Meter	REX Meter	ZCC22000000
Form 2S REX Meter with service disconnect option board and service disconnect switch	REX Meter	ZCC32A00000

9.1 Technical Description

9.1.1 Device Type

The REX Meter is an intentional radiator and is classified as a Part 15.247 device. The critical specifications of the REX Meter are listed in the following table:

Frequency Band	902 – 915 MHz
Classification	Frequency Hopping Spread Spectrum
Maximum Output Power	0.25W (+24 dBm)

Channel Spacing	400 kHz
Channel 20 dB Bandwidth	325 kHz
Number of Channels	25
Max channel dwell time within a 10 second period	< 0.4 seconds

9.1.2 Electronic Assembly Description

9.1.2.1 Description of Circuit Function

The REX Meter electronic assembly implements a single-phase watt-hour meter, with an integrated 900 MHz, frequency hopping spread spectrum radio. The block diagram in Figure 10 shows the major sections of the electronic assembly:

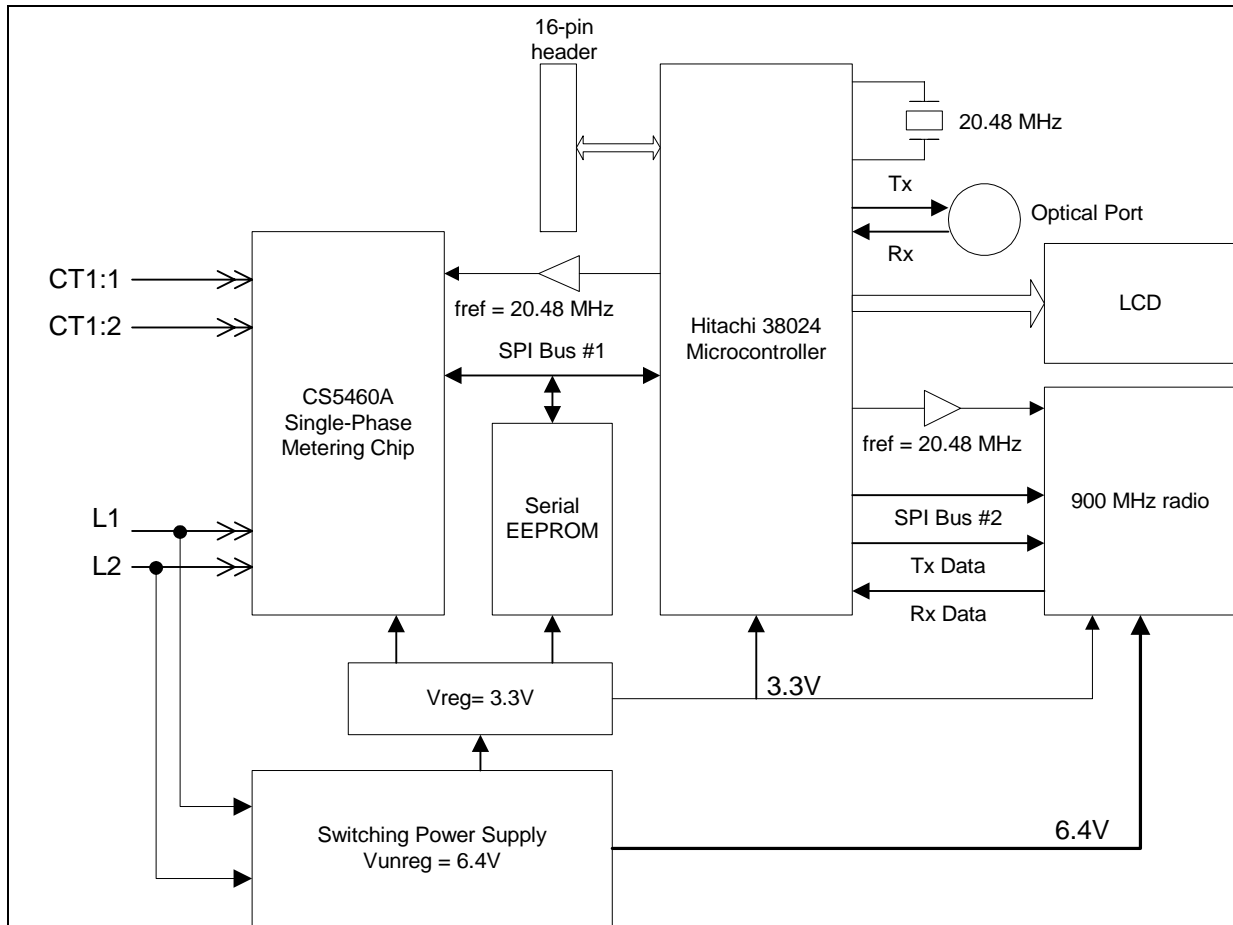


Figure 10: REX Meter Block Diagram

- | | |
|-----------------|---|
| L1 and L2 | Line voltage is brought to the board via 2 pads, L1 and L2, one on the top side of the PCB, and one on the bottom side of the PCB. Line voltage potential will range from 96 to 288 volts between L1 and L2. From the outside of the meter, line voltage is connected via voltage blades, where the voltage applied and the blades to apply the voltage depend on the meter form. |
| CT1:1, CT1:2 | Current signals from an off-board current transformer (CT) are brought to the board through a 2-pin connector. Potentials at CT1 are low voltage, ranging from 250 mV to less than 75 μ V. |
| Microcontroller | An 80-pin, 0.50 mm pitch microcontroller. |

LCD	The LCD is mounted in the PCB with a single row of 17 pins. The data displayed on the LCD is configurable, but the meter will typically display electrical energy consumption (i.e. kWh).
900 MHz radio	The 900 MHz radio block consists of a TI6900 RF transceiver chip, a voltage controlled oscillator, a low noise amplifier (LNA), a power amplifier (PA), a Transmit/Receive Switch, and a circuit board mounted antenna. A detailed block diagram of the radio is shown in Figure 11. Note that the TI5901 RF transceiver chip is an equivalent part to the TI6900, except that the TI5901 has a specified operating temperature of -40°C to $+85^{\circ}\text{C}$, and the TI6900 has a specified operating temperature of -20°C to $+60^{\circ}\text{C}$.
Power Supply	A switching power supply provides an unregulated 6.4V for the RF transmitter and feeds a regulator that provides a 3.3V regulated voltage.
EEPROM	The serial EEPROM provides storage for configuration information and metering data.
Interface Signals	There is an optical port for serial communications with the microcontroller and a 16-pin header that will allow communications with future option boards. Both of these ports use a fixed baud rate of 4800 bits/sec. The optical port will be used to configure the REX Meter into various normal and test modes of operation to facilitate FCC testing.

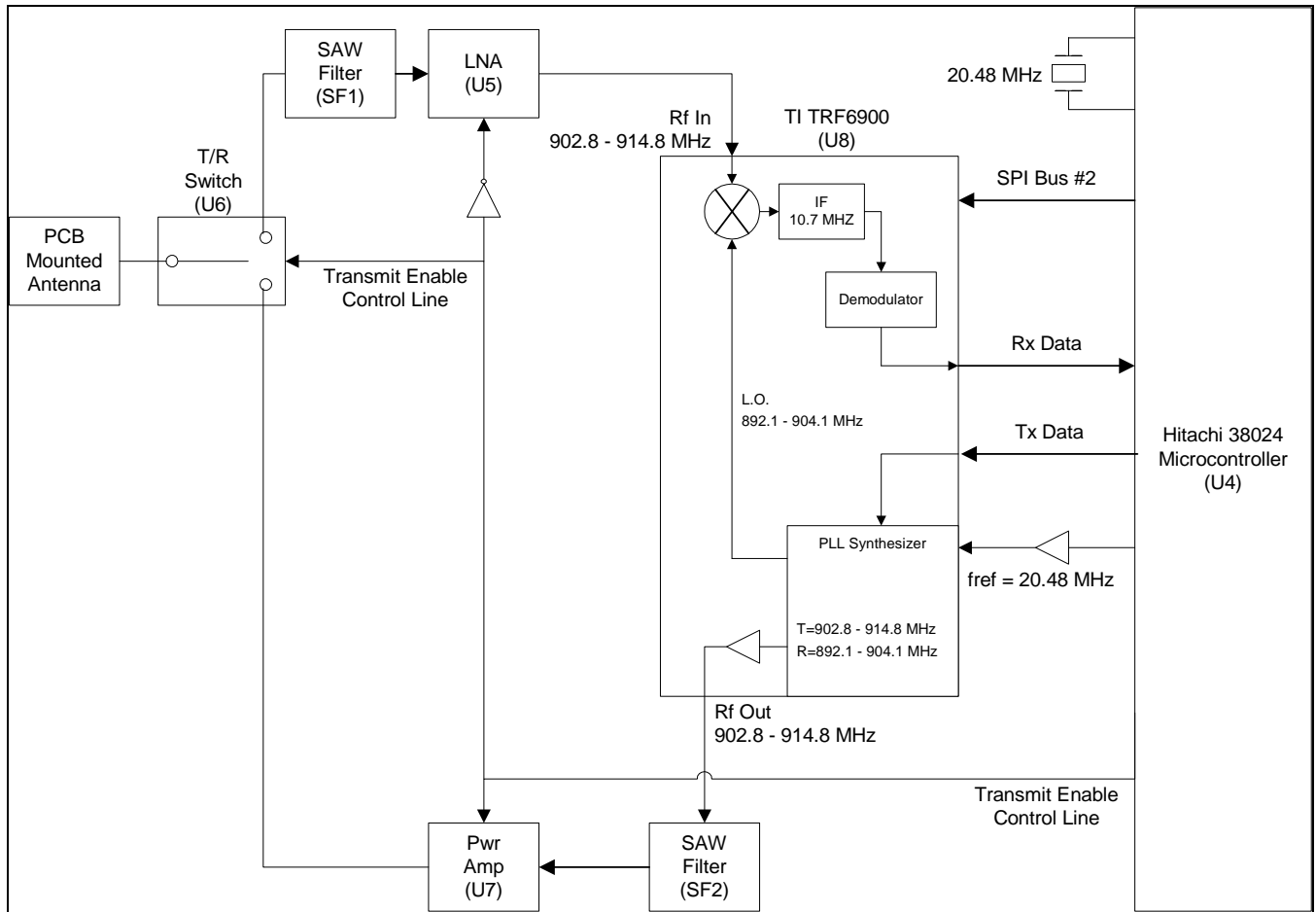


Figure 11: Radio Block Diagram

SPI Bus #2

In normal operation, the radio is in receive mode and is hopping across 25 channels searching for a message to receive. SPI Bus #2 is used to:

- configure the TI6900 to the correct frequency
- place the TI6900 in transmit or receive mode

Tx Data

In normal operation, when transmitting, the microcontroller sends manchester encoded data to the TI6900 at the manchester data rate of 17.705 kbps. Each packet that is sent is 97.3 msec in duration. Each new packet transmitted is on the next channel in the pseudo-random list of 25

channels used by the REX Meter.

Antenna

The antenna is a planar inverted F antenna approximately 1.3 inches in height and 2.7 inches in length with an integral ground-plane structure that solders into the printed-circuit board as shown in the attached drawing.

9.1.3 Rf Channel Plan

The REX Meter is a frequency-hopping spread spectrum device using 25 hopping frequencies between 902.8 MHz and 914.8 MHz. The 20 dB bandwidth of the hopping channel is approximately 325 kHz and the average time of occupancy on any frequency is less than 0.4 seconds within a 10 second period. In a constant transmit mode, the REX Meter would send a packet every 97.3 msec with a delay of 8 to 16 msec between packets. Each packet is sent on the next channel in the pseudo-random channel list. In 10 seconds, the REX Meter would send no more than 95 packets, with four packets sent on each of 20 channels and three packets sent on each of 5 channels. For the channels sending four packets, the total on time is 0.389 seconds, which is less than the 0.4 second occupancy requirement.

The REX Meter uses the following 25 channels in the following pseudo-random order:

Index	Channel	Center Frequency (MHz)
1	12	907.2
2	29	914
3	5	904.4
4	19	910
5	11	906.8
6	23	911.6
7	26	912.8
8	13	907.6
9	22	911.2
10	15	908.4
11	1	902.8

12	25	912.4
13	4	904
14	21	910.8
15	14	908
16	27	913.2
17	8	905.6
18	31	914.8
19	18	909.6
20	16	908.8
21	7	905.2
22	20	910.4
23	3	903.6
24	28	913.6
25	6	904.8

9.2 Configuration(s)

The meters to be tested are installed in meter sockets appropriate for measuring electricity consumption. The following standard meter forms have been provided for test:

Meter Form	Test Voltage
Form 1S	120V ac
Form 2S	240V ac
Form 3S	120 to 240V ac
Form 4S	120 to 240V ac

All units have an internal antenna that is soldered directly to the printed circuit board. There are no other antenna options to be tested. As shown in Figure 10, the printed circuit board assembly is connected to line voltage (120 or 240V ac) and to the output of a current transformer. There are no other cables or wires connected to the REX meter.



Figure 12 – Picture of a REX meter in an electrical socket

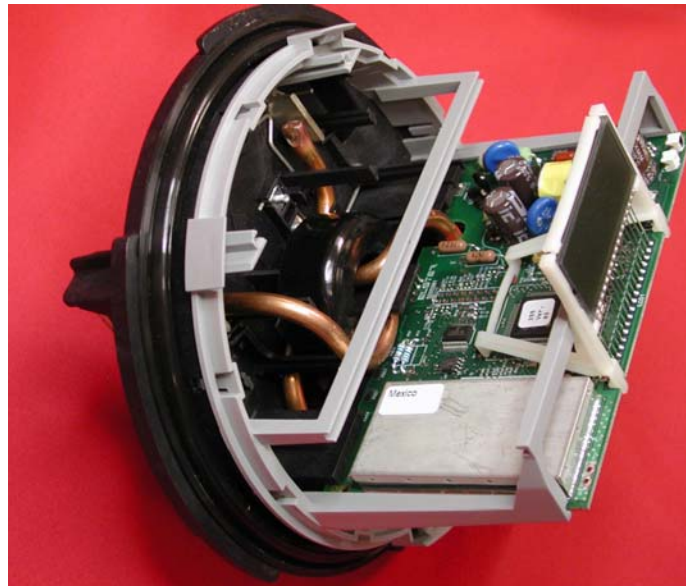


Figure 13: REX Meter without Outer Cover and Inner Housing Removed

9.3 Operating Conditions

As stated in the previous section, the nominal line voltage seen by the REX meters to be tested are based on the meter form:

Meter Form	Test Voltage
Form 1S	120V ac
Form 2S	240V ac
Form 3S	120 and 240V ac
Form 4S	120 and 240V ac

9.3.1 Firmware and Software

There is a 16-bit Hitachi 38024 microprocessor that controls the behavior of the REX meter. The firmware revision to be tested is expected to be labeled 255.100. A software program titled "Meter Explorer" will be used to exercise the REX meter and place the meter in various modes of operation required to test that the meters adhere to the FCC guidelines. Elster Electricity will provide the test lab with a laptop pc with the software and the interface hardware required to communicate to the REX meter.

9.3.2 Mode(s)

Refer to Section 9.3.6.

9.3.3 Testing the REX Meter

9.3.3.1 Required Equipment

The following equipment is required to communicate to the REX Meter to change the operating mode for test purposes:

1. A pc with a Windows NT or Windows 2000 operating system.
2. An Elster Electricity software program titled "MeterExplorer". This software tool can be used to place the REX Meter into the various test modes. The software on a CD or a laptop computer with the software loaded will be provided to the test lab. Version 3.0.9 or higher of MeterExplorer is required.
3. An optical probe and associated optical probe power supply.

Elster Electricity will provide the test lab with a laptop pc with the optical probe and power supply. The description of the test setup has already been done on this laptop, and the reader of this document can skip to Section 9.3.5.

9.3.4 Test Setup

To communicate to the REX Meter, the optical probe must be plugged into a serial port on the pc and must also be plugged into the optical probe power supply. The optical probe is then hung on the optical hanger on the inner housing of the REX Meter. Note that the outer cover of the REX Meter must be removed to optically communicate to the REX Meter.

9.3.4.1 MeterExplorer Setup

By default, MeterExplorer is installed to the following directory:

C:\Program Files\ABB\MeterTools\

Assuming the default directory is not changed, the following step must be followed to allow MeterExplorer access to the REX Meter definition file:

- Copy the files titled “REX_METER_255_100.MD” and “REX_NODE_255_100.MD” to the following folder: C:\Program Files\ABB\MeterTools\MD\REX\

Note that the 255_100 suffixes on the end of the file names indicate the firmware release. The firmware release and the file names may change accordingly.

9.3.5 Running MeterExplorer

From the Start menu, open MeterExplorer as follows:

Start ► Programs ► MeterTools ► MeterExplorer

9.3.5.1 MeterExplorer Properties

At the top of the MeterExplorer window, there are 3 drop down menus that allow selection of the meter type, communication medium, and the communication protocol. For the REX Meter, these drop downs must be set to the following:

- REX.REX_METER_255_100
- OPTICAL_PROBE
- REX_OPTICAL

This MeterExplorer GUI configured for the REX Meter is shown in Figure 14.

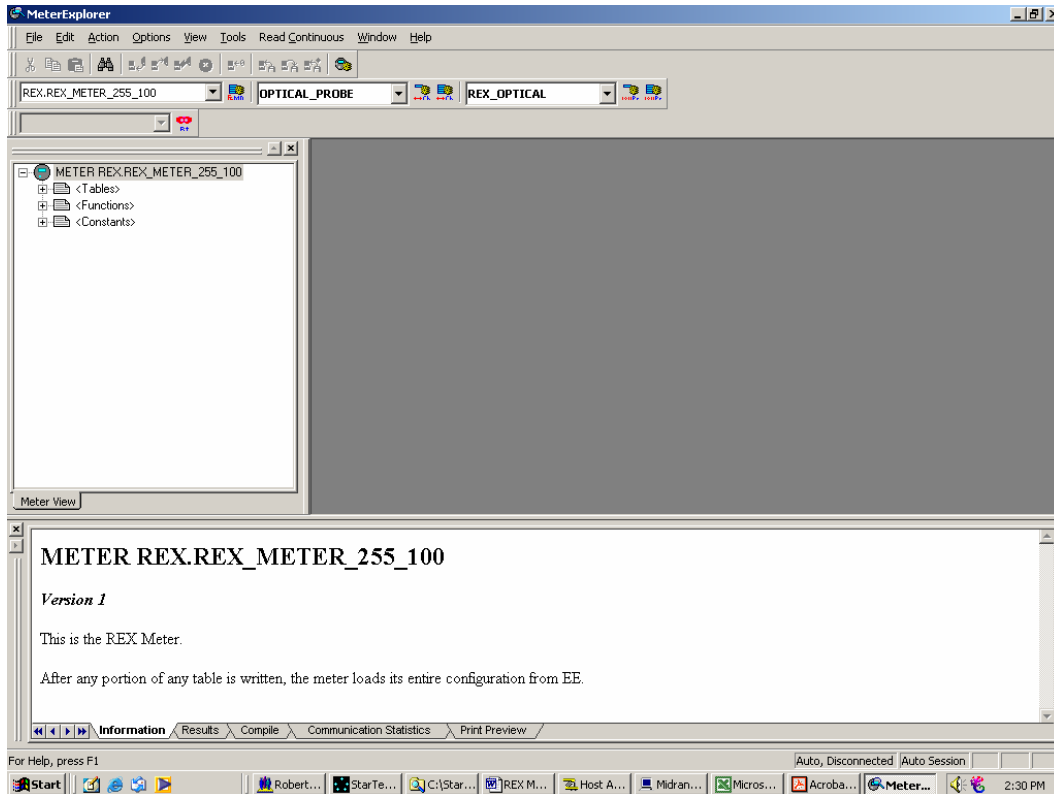


Figure 14: MeterExplorer GUI

To the immediate right of the communication medium (i.e. OPTICAL_PROBE) drop down menu is a tool button that allows the communication port and medium to be configured. By default, MeterExplorer uses Com Port 1 for communications. If you are using a different serial port on the pc, click the button and change the serial port to the port to which the optical probe is connected.

To the immediate right of the communication protocol (i.e. REX_OPTICAL) drop down menu is a tool button that allows the communication protocol to be configured. Click on this tool button to check that the following properties are set correctly:

- Session baud = 4800
- Password = blank or \x00\x00\x00\x00.
- The check box for Manufacturing Access must be checked.

The configuration is also shown in Figure 15.

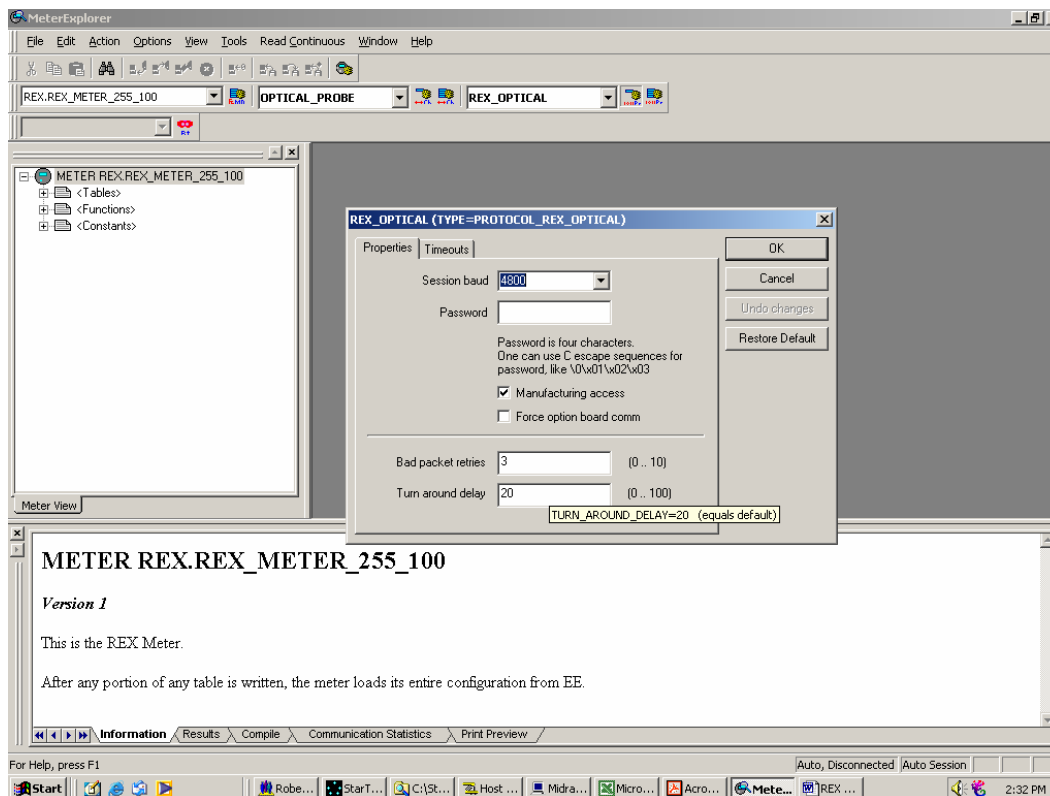


Figure 15: MeterExplorer - REX_OPTICAL Protocol Properties

9.3.5.2 Using MeterExplorer

MeterExplorer can be used to read or write tables to the meter and to force the meter to execute functions or commands. To read or write tables, expand the <Tables> item by clicking on the + box and then select the desired table by highlighting the table in the table list in the left-hand window. The table then can be accessed one of two ways:

1. From the main menu: **Action ► Read** or **Action ► Write**

OR

2. Right click the mouse while it is over the highlighted table and click the right mouse button. From the pop-up menu, select **Read** or **Write**

To execute a function, expand the <Functions> item by clicking on the + box and then select the desired function by highlighting the function in the function list in the left-hand window. The function can then be executed one of two ways:

1. From the main menu: **Action ► Execute Function(s)**

OR

2. Right click the mouse while it is over the highlighted function and click the right mouse button. From the pop-up menu, select **Execute Function(s)**

9.3.6 Description of Test Modes in the REX Meter

The REX Meter supports the following test modes of operation to facilitate FCC and manufacturing tests:

1. Test mode - Constant transmit, unmodulated data on a single channel
2. Test mode - Constant transmit – modulated data on a single channel
3. Test mode - Constant transmit – normal hopping, hopping between the 25 channels in the pseudo-random list of channels
4. Test mode - Constant receive mode on a single channel
5. Normal operation – Receive mode unless polled by another device.

The following sections describe the MeterExplorer software can be used to place the meter in the various modes.

For all the tests, the radio channel is specified as a number from 0 to 31, with the center frequency of the channel calculated from the following formula:

$$\text{Center Frequency} = 902.4 + \text{Channel} * 0.4 \text{ (MHz)}$$

For example, channel 0 is:

$$\text{Center Frequency} = 902.4 + 0 * 0.4 \text{ (MHz)} = 902.4 \text{ MHz}$$

and channel 31 is:

$$\text{Center Frequency} = 902.4 + 31 * 0.4 \text{ (MHz)} = 914.8 \text{ MHz}$$

9.3.6.1 Constant Transmit Modes Using MF_041_RADIO_TEST

The Radio Test function allows a test engineer to place the REX Meter into a constant transmit mode on a specific frequency. There are function parameters that allow the mode and the channel to be selected by the engineer.

To change the parameters, highlight MF_041_RADIO_TEST in the functions items on the left of the screen. After the parameters are set in the right-hand window, highlight MF_041_RADIO_TEST, right click on the mouse to bring up the pop-up menu, and select **Execute Function(s)**.

The constant transmit mode is disabled when the REX Meter is power cycled or when the function is executed again with:

```
MF_041_RADIO_TEST.REQUEST.TEST_SELECT.TRANSMIT_CONTINUOUSLY = 0 {Disabled}
```

9.3.6.1.1 Constant Transmit – Unmodulated Data

MF_041_RADIO_TEST.REQUEST.TEST_SELECT.TRANSMIT_CONTINUOUSLY = 1 {Continuous, Unmodulated}

MF_041_RADIO_TEST.REQUEST.TEST_SELECT.DATA_BIT_TO_TRANSMIT = 0 or 1 (selects low or high deviation)

MF_041_RADIO_TEST.REQUEST.TEST_SELECT.RESERVED = 0

MF_041_RADIO_TEST.REQUEST.CHANNEL = 0 – 31 (selects the channel)

9.3.6.1.2 Constant Transmit – Modulated Data

MF_041_RADIO_TEST.REQUEST.TEST_SELECT.TRANSMIT_CONTINUOUSLY = 2 {Continuous, Modulated}

MF_041_RADIO_TEST.REQUEST.TEST_SELECT.DATA_BIT_TO_TRANSMIT = 0

MF_041_RADIO_TEST.REQUEST.TEST_SELECT.RESERVED = 0

MF_041_RADIO_TEST.REQUEST.CHANNEL = 0 – 31 (selects the channel)

9.3.6.2 Test Modes Controlled by Parameters in MT-224

MT-224 is a configuration table that controls the operation of the 900 MHz radio. The table allows for the REX Meter to be placed in test modes. To change the contents of MT-224, first read the table by doing the following:

1. Under the list of tables in the REX Meter, highlight MT_224_LAN_CONFIGURATION.
2. With the table selected, right click on the mouse to bring up a pop-up menu and select **Read**
3. After reading the table, change the parameters necessary for the test (refer to Sections 9.3.6.2.1 and 9.3.6.2.2).
4. With the table selected, right click on the mouse to bring up a menu and select **Write**

To take the unit out of test mode, the table must be written again with the parameters returned to the normal state. This can be done by reversing the procedure listed above or by following the procedures listed in Section 9.3.6.3 to put the unit back into the normal operating mode.

9.3.6.2.1 Constant Transmit – Channel Hopping

When placed in this mode, the meter will continually transmit packets, with each packet being approximately 97.3 msec in duration and an 8 – 16 msec off time between packets. Each packet is sent on the next channel in the pseudo-random list of channels (refer to Section 9.1.3).

To place the REX Meter in this mode, the following MT-224 parameters must be changed from the normal MT-224 configuration:

MT_224_LAN_CONFIGURATION.RADIO_CONFIG.FLAGS.IS_IN_TEST_MODE = 1 {True}

MT_224_LAN_CONFIGURATION.RADIO_CONFIG.FLAGS.IS_SENDER = 1 {True}

```
MT_224_LAN_CONFIGURATION.RADIO_TEST_MODE_PARAMETERS.NUM_PACKETS = 65,000  
MT_224_LAN_CONFIGURATION.RADIO_TEST_MODE_PARAMETERS.SEND_DELAY = 0  
MT_224_LAN_CONFIGURATION.RADIO_TEST_MODE_PARAMETERS.TEST_PACKET.PACKET_LENGTH = 70
```

WARNING: Once MT-224 is set as shown above, the REX Meter will stay in this constant transmit mode until MT-224 is written with the parameters set for normal operation. After the test is completed, make sure to reverse the procedure to put the REX Meter back into the normal operating mode. To do this, the MT-224 parameters must be changed back to their default values:

```
MT_224_LAN_CONFIGURATION.RADIO_CONFIG.FLAGS.IS_IN_TEST_MODE = 0 {False}  
MT_224_LAN_CONFIGURATION.RADIO_CONFIG.FLAGS.IS_SENDER = 0 {False}  
MT_224_LAN_CONFIGURATION.RADIO_TEST_MODE_PARAMETERS.NUM_PACKETS = 0  
MT_224_LAN_CONFIGURATION.RADIO_TEST_MODE_PARAMETERS.SEND_DELAY = 0  
MT_224_LAN_CONFIGURATION.RADIO_TEST_MODE_PARAMETERS.TEST_PACKET.PACKET_LENGTH = 0
```

9.3.6.2.2 Constant Receive Mode

In test mode, the REX Meter can be configured to receive only on a specified channel. To place the REX Meter in this mode, the following MT-224 parameters must be changed from the normal MT-224 configuration:

```
MT_224_LAN_CONFIGURATION.RADIO_CONFIG.FLAGS.IS_IN_TEST_MODE = 1 {True}  
MT_224_LAN_CONFIGURATION.RADIO_CONFIG.FLAGS.IS_SENDER = 0 {False}  
MT_224_LAN_CONFIGURATION.RADIO_CONFIG.FLAGS.USE_CHANNEL_LIST = 1 {True}  
MT_224_LAN_CONFIGURATION.RADIO_TEST_MODE_PARAMETERS.CHANNEL_LIST[0] = 0 – 31 (selects the channel)
```

WARNING: Once MT-224 is set as shown above, the REX Meter will stay in this mode of operation until MT-224 is written with the parameters set for normal operation. After the test is completed, make sure to reverse the procedure to put the REX Meter back into a normal mode of operation. To do this, the MT-224 parameters must be changed back to their default values:

```
MT_224_LAN_CONFIGURATION.RADIO_CONFIG.FLAGS.IS_IN_TEST_MODE = 0 {False}  
MT_224_LAN_CONFIGURATION.RADIO_CONFIG.FLAGS.IS_SENDER = 0 {False}  
MT_224_LAN_CONFIGURATION.RADIO_CONFIG.FLAGS.USE_CHANNEL_LIST = 0 {False}  
MT_224_LAN_CONFIGURATION.RADIO_TEST_MODE_PARAMETERS.NUM_PACKETS = 0  
MT_224_LAN_CONFIGURATION.RADIO_TEST_MODE_PARAMETERS.SEND_DELAY = 0  
MT_224_LAN_CONFIGURATION.RADIO_TEST_MODE_PARAMETERS.TEST_PACKET.PACKET_LENGTH = 0
```

9.3.6.3 Normal Operation

In the normal operating mode, the REX Meter will only transmit if there is an exception condition to be sent or if polled by another device. When not transmitting, the REX Meter is in receive mode scanning the 25 channels for a valid packet in an attempt to synchronize to another device.

To restore the REX Meter to the normal operating condition, use MeterExplorer to write the MT-224 base configuration to the meter. This is done as follows:

1. Under the list of tables in the REX Meter, highlight MT_224_LAN_CONFIGURATION.
2. With the table selected, right click on the mouse to bring up a menu and select **Read**
3. With the table selected, right click on the mouse to bring up a menu and select:
Load From File
4. At the prompt, select and open the file named: "RexMeterBaseConfig.mtd"
5. Under the list of tables in the REX Meter, highlight MT_224_LAN_CONFIGURATION.
6. With the table selected, right click on the mouse to bring up a menu and select **Write**

The read followed by the write verifies that the information unique to a particular meter is maintained.

9.4 Performance Criteria (Required for Immunity Testing Only)

Immunity testing on the REX meters is not required and this section is therefore not applicable.

9.5 Power Requirements

The REX meters are powered by connecting 120Vac or 240Vac to the blades on the back of the meter. Power is typically brought to the meter blades via a meter socket, and Elster Electricity has provided these sockets to the test lab.

Table 5 - Power Requirements

EUT	Input Voltage	Input Frequency	Input Current (rated)	1 ϕ , 3 ϕ , or DC	Plug Type
Form 1S REX Meter	120Vac	60 Hz	200A	1 ϕ	meter socket
Form 2S REX Meter	240Vac	60 Hz	200A	1 ϕ	meter socket
Form 3S REX Meter	120 to 240Vac	60 Hz	20A	1 ϕ	meter socket
Form 4S REX Meter	120 to 240Vac	60 Hz	20A	1 ϕ	meter socket
Form 2S REX Meter with service disconnect option board and switch	240Vac	60 Hz	200A	1 ϕ	meter socket

9.6 Oscillator / Microprocessor Frequencies

This section lists all oscillator frequencies used in the EUT. This is required for immunity testing (each frequency is dwelled upon during Radiated Immunity) and extremely helpful for mitigation during Radiated Emissions.

The 900 MHz radio in the REX Meter is a frequency-hopping spread spectrum radio. The receiver is a single conversion, super-heterodyne receiver, with a 10.7 MHz IF. The receiver local oscillator is 10.7 MHz below the channel frequency.

Table 6 - Oscillator Frequency List

Frequency (MHz)	Description of Use
20.48 MHz	Crystal Oscillator for processor clock and synthesizer reference.
10.7 MHz	Receiver IF (Receiver is a single-conversion, super-heterodyne receiver, with a 10.7 MHz IF)
4.096 MHz	Internal clock of the metering chip (U12) with internal divide by 5 and external 20.48 MHz input.

10 Equivalent Models

Elster Electricity has provided samples of the various chassis to be tested as listed in Section 9. The following table lists equivalent models:

Table 7 - Models Equivalent to EUT

Model Number (Elster Style Number)	Reason for Equivalence
ZCCW2000000	Form 2S meter without the voltage disconnect link on the base of the meter. Otherwise, it is the same as ZCC32000000.

10.1 Methods of Determining Equivalence

Either of the following methods can be used for including a list of equivalent models into the laboratory test report. Elster Electricity will provide a letter of attestation stating that the model listed above is equivalent to the model tested.

10.1.1 Manufacturer's Letter of Attestation

The manufacturer can provide a Letter of Attestation to the laboratory stating that the model(s) listed are equivalent to the one(s) tested. The laboratory will include this list in its final test report with the following statement:

The manufacturer has provided this list of equivalent models and has been included in this report for the convenience of the customer. The laboratory has *not* performed an evaluation of these models and makes no statement regarding the validity of the list.

10.1.2 Laboratory Evaluation

The manufacturer can present the laboratory with a list of equivalent model(s) and the reason(s) why each model is equivalent to the one(s) tested. The laboratory will evaluate each model on the list and determine whether it is equivalent or not. Model(s) determined to be equivalent can be listed in the report with the following statement:

The laboratory has performed an evaluation of this list of equivalent models and states that the test data contained within this report applies to the compliance of these models with the standards tested to. This statement is based on a test sample of one unit.