



# Internal Photos

**EUT Name:** Rex2 Power Meters  
**EUT Model:** RX2EA4, RX2EA4-I  
**FCC ID:** QZC-RX2EA4 , QZC-RX2EA4-I  
**IC ID:** 4557A-RX2EA4  
  
FCC Title 47, Part 15, SubpartC, RSS-210 Issue 7

*Prepared for:*

John Holt  
Elster Solutions, LLC  
208 South Rogers Lane  
Raleigh, NC 27610  
Tel: 919 250-5557  
Fax: 919 250-5486

*Prepared by:*

TUV Rheinland of North America  
762 Park Avenue  
Youngsville, NC 27596  
Tel: (919) 554-3668  
Fax: (919) 554-3542  
<http://www.tuv.com/>

*Report/Issue Date:* 9 February 2010  
*Report Number:* Supplement to 30953899.001 - Internal Photos

### Internal Photos:



Figure 1: Internal View w/ Remote External Antenna Connection

Note: The antenna shown mounted on the top of the EUT is not used or connected.

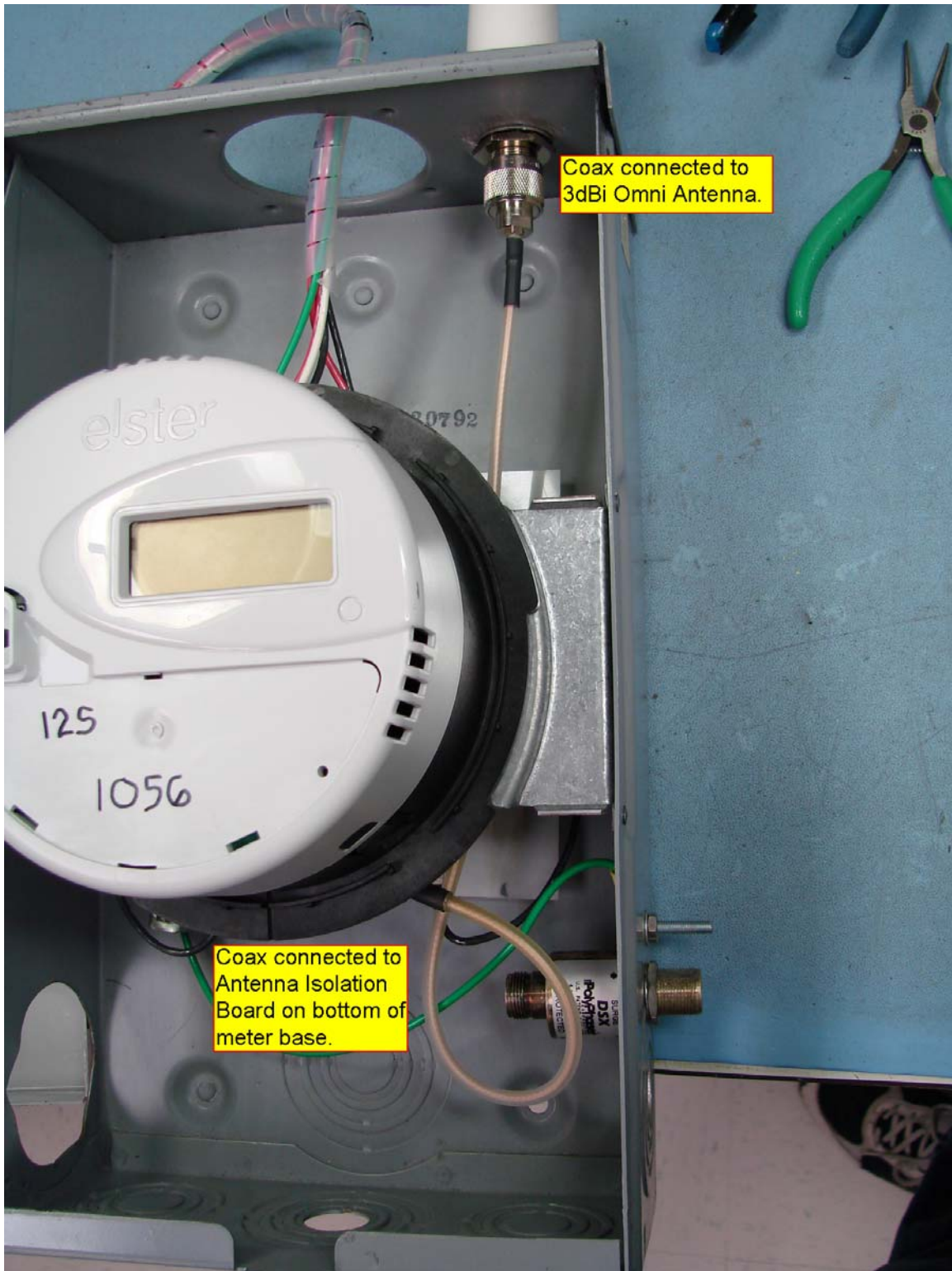


Figure 2: Internal View - Local External Antenna Connection



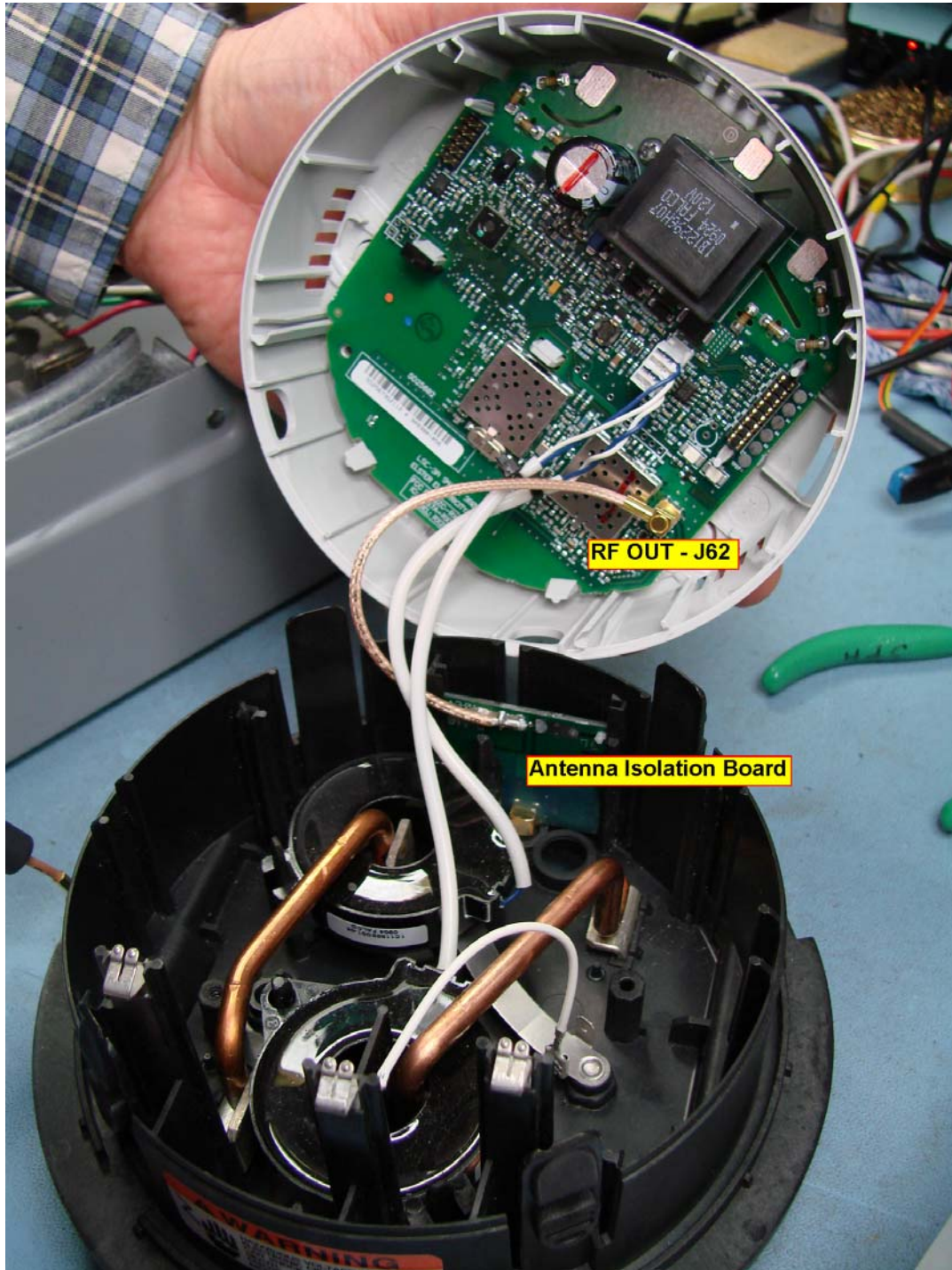


Figure 3: Internal View – External Antenna Configuration

Figure 3 showing module connection to Antenna Isolation Board

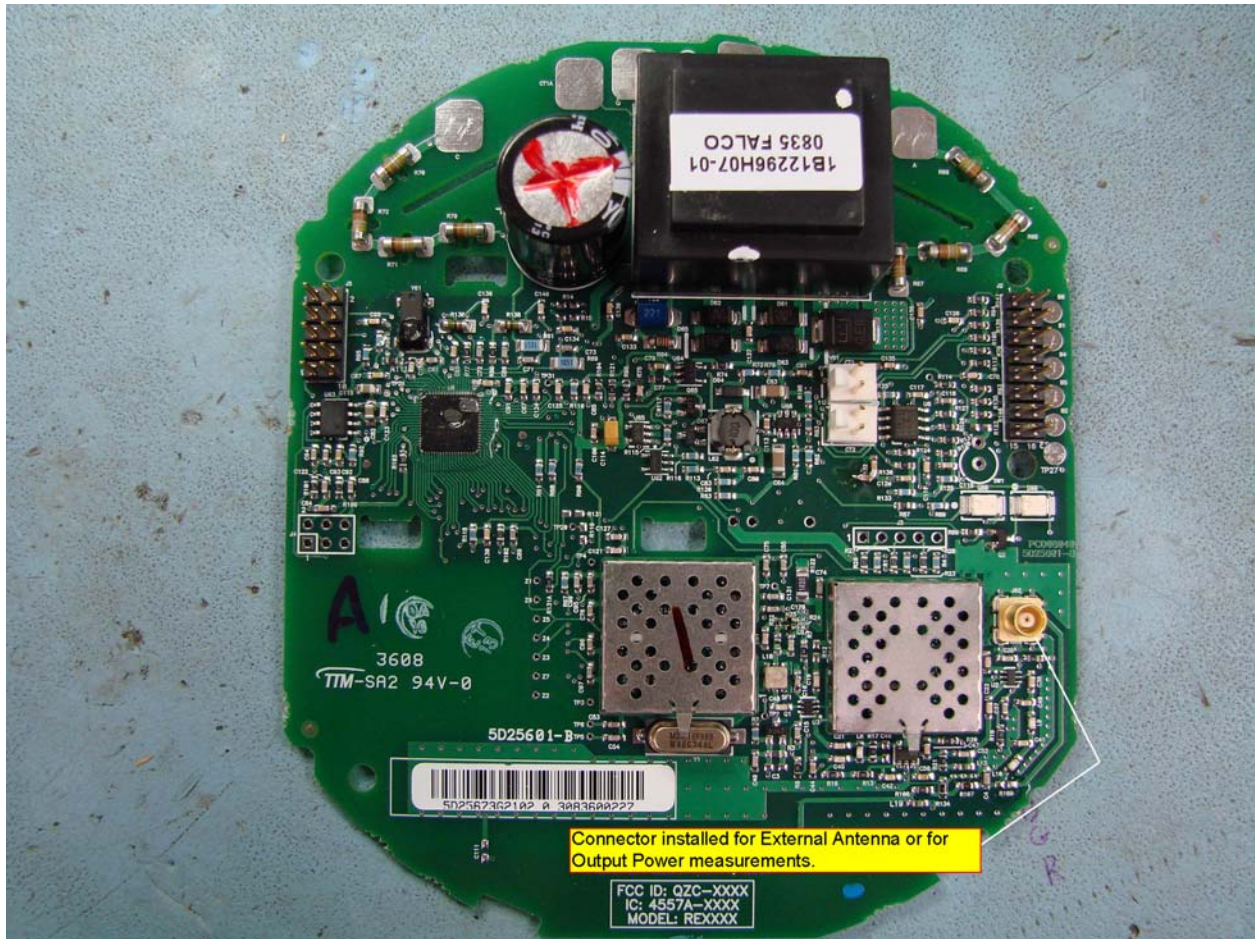


Figure 4: Internal View - Component Side of RX2EA4 (RX2EA4-I) Module



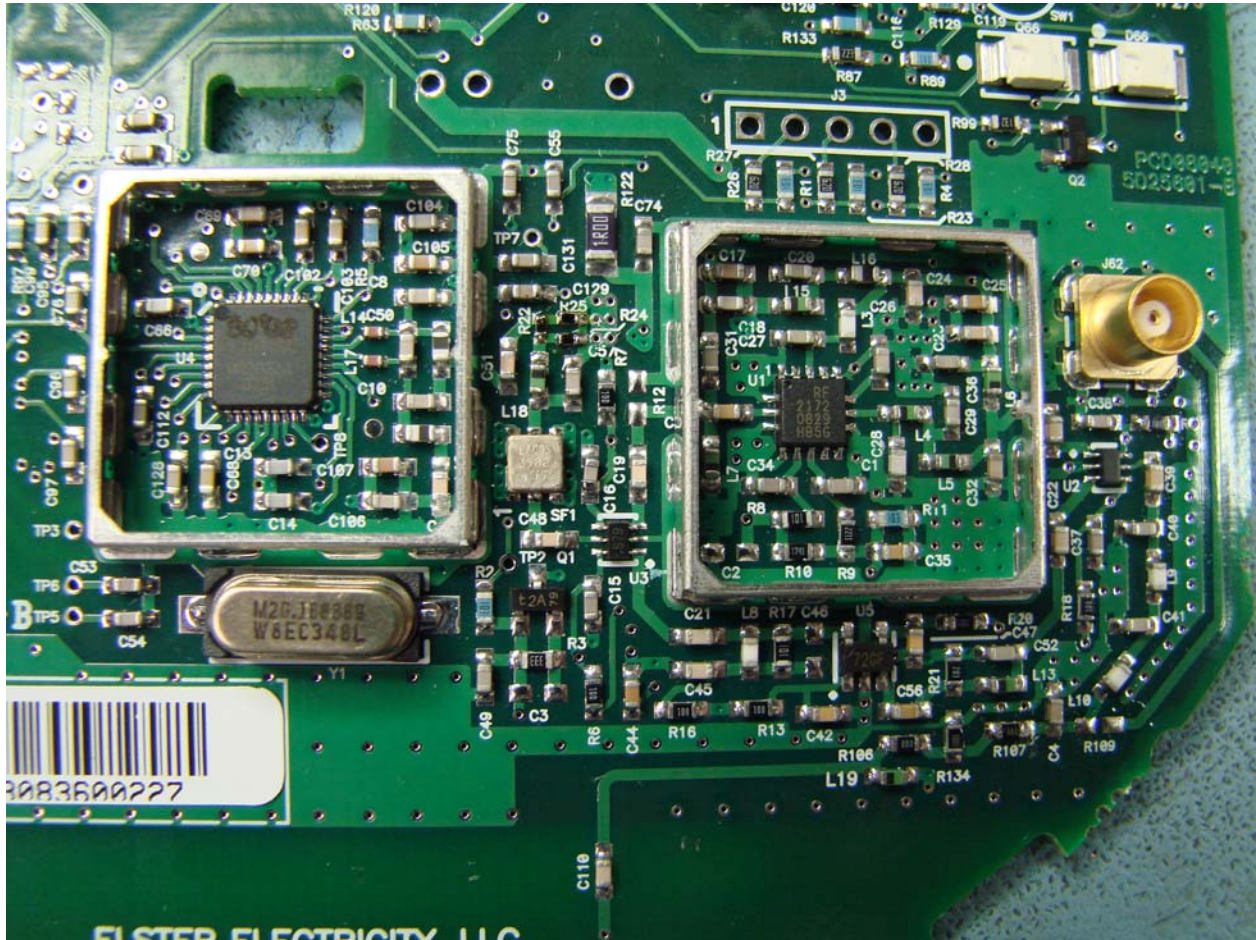


Figure 5: Internal View - RX2EA4 (RX2EA4-I) Radio Circuitry under Shields

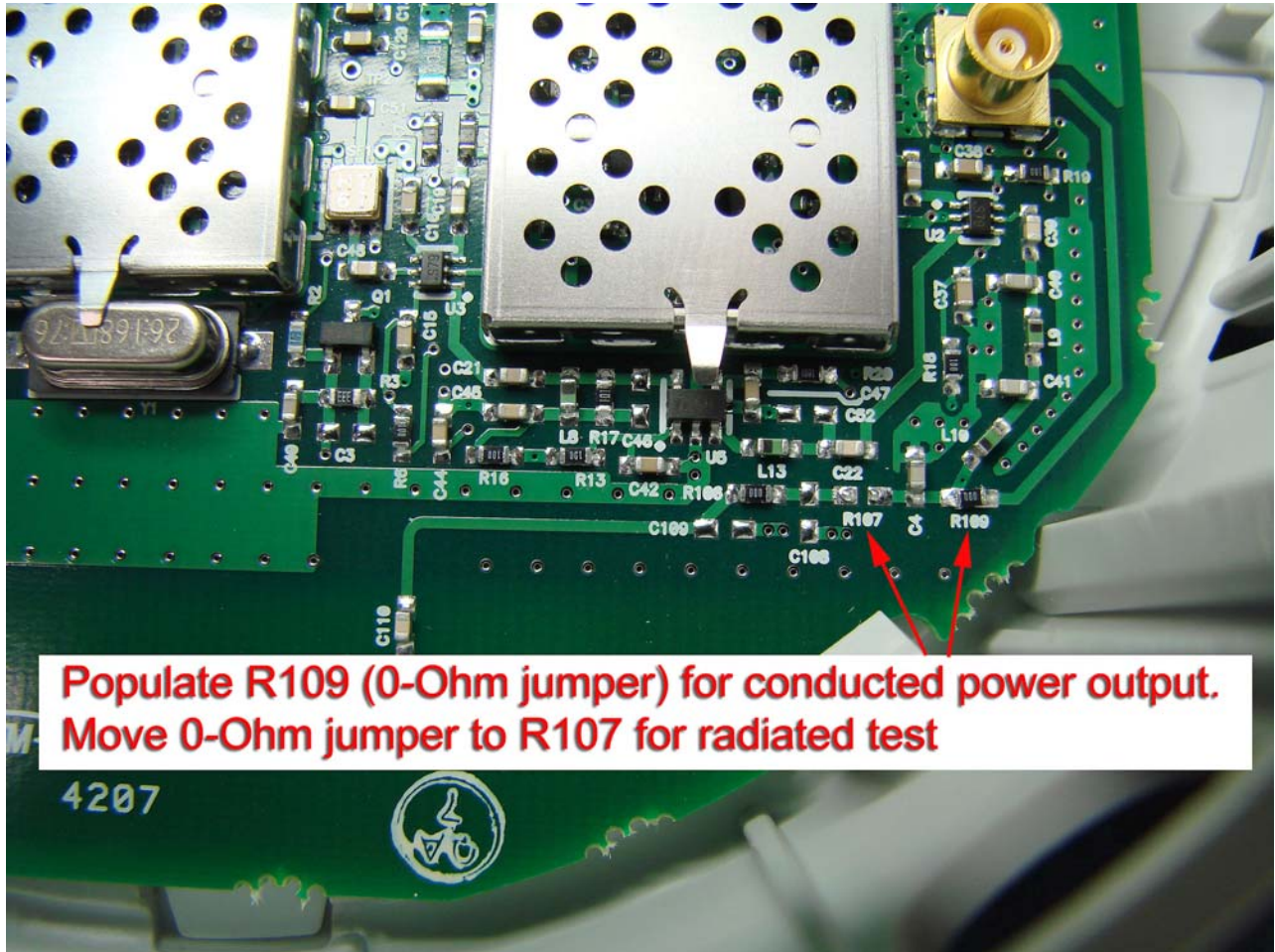
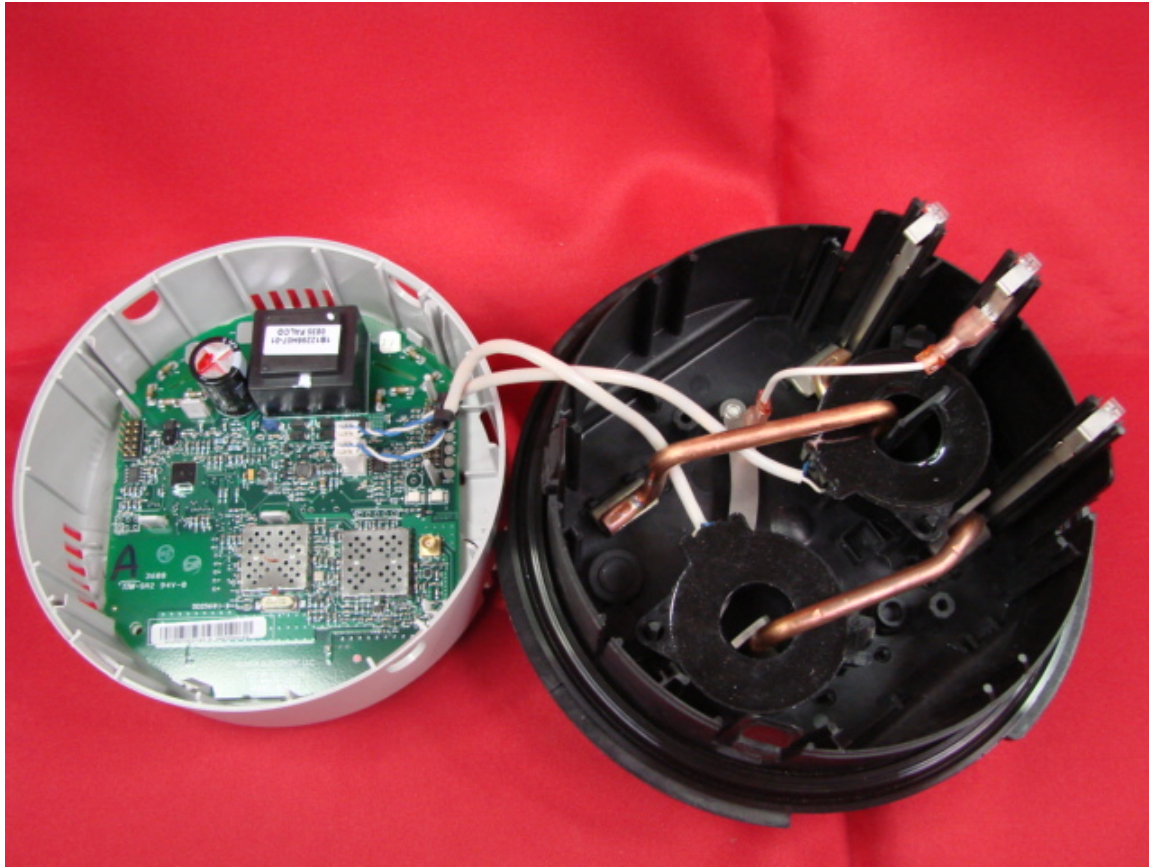


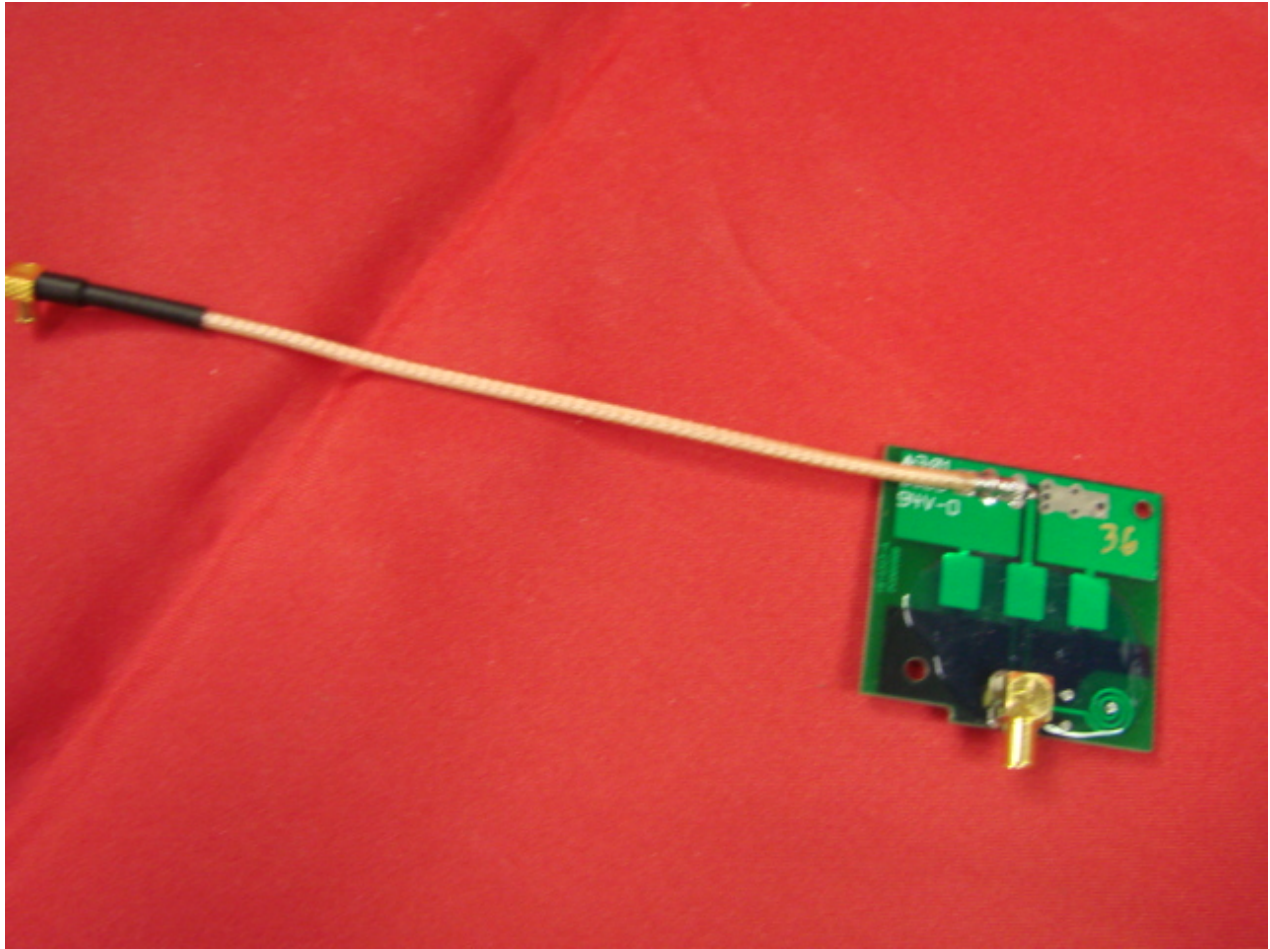
Figure 6: Internal View - Jumper Configuration for Measuring Conducted RF Output Power



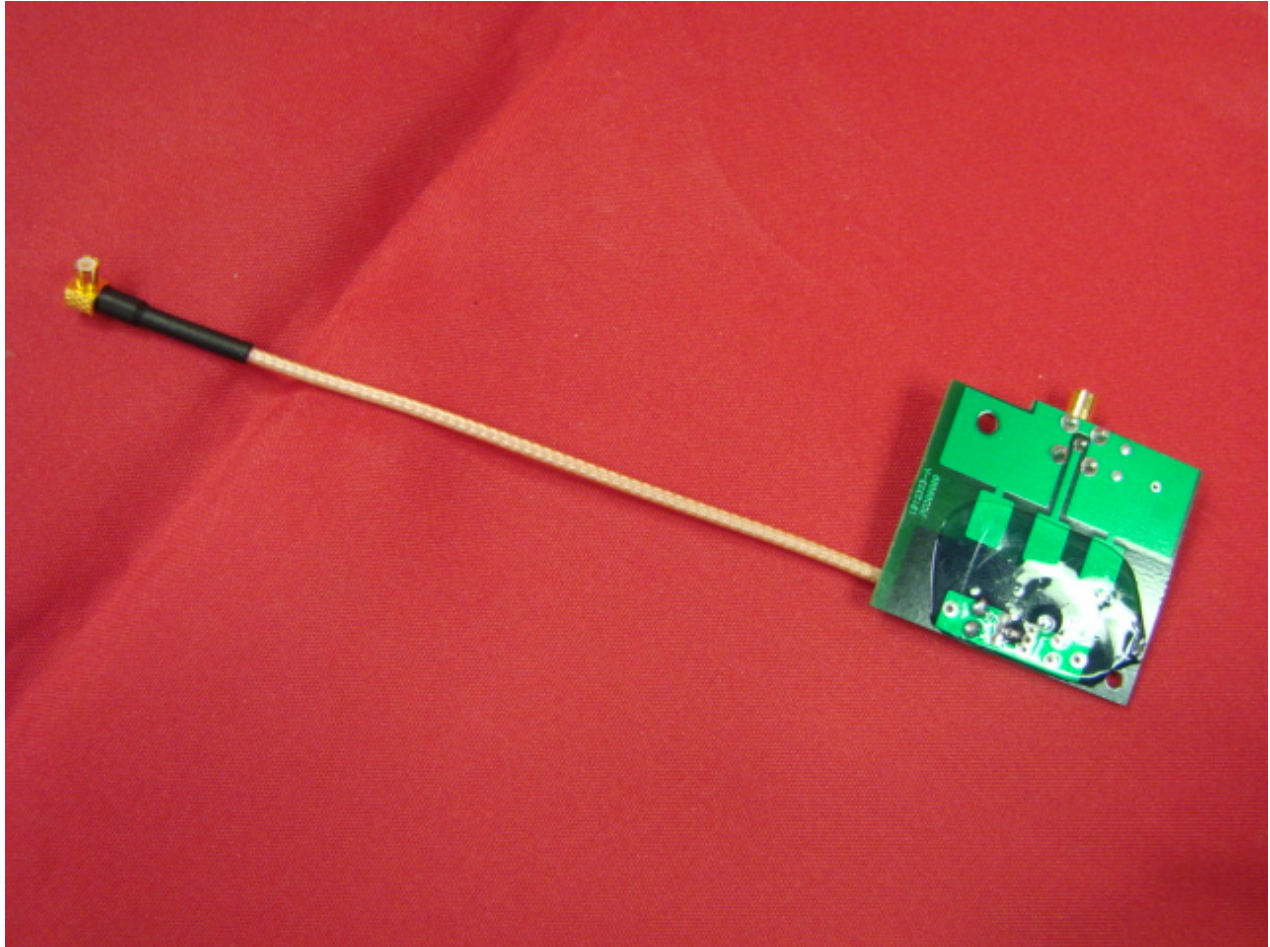


Internal view – Internal Antenna Configuration





Antenna Isolation Board top side view



Antenna Isolation Board bottom side view