

Certification Exhibit

FCC ID: QZC-REXUAINZ

FCC Rule Part: 15.247

ACS Project Number: 15-0286

Manufacturer: Elster Solutions, LLC
Model: REXUAI-NZ

Internal Photos

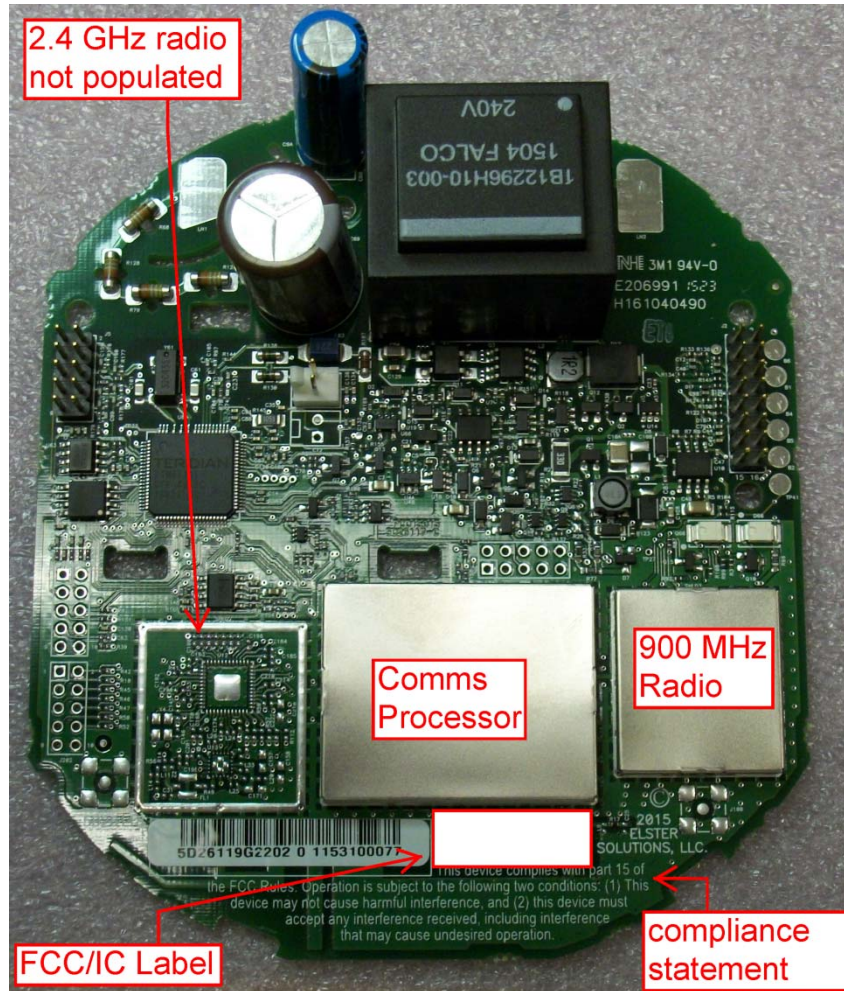


Figure 1: Component Side View of REXUAI-NZ PCBA

Figure 1 shows the component side of the REXUAI-NZ printed circuit board assembly. The 900 MHz antenna is printed on the board beneath the FCC compliance statement. The 2.4 GHz radio area is not populated with components and is therefore non-operational. The location of the FCC/IC ID label is indicated. The FCC/IC ID is silkscreened on the board for the model REXUA only. For all other models, including the REXUAI-NZ, the appropriate ID label is permanently adhered over top of the silkscreened ID. Figure 2 shows the solder side of the PCBA while Figure 3 shows the radios with shield covers removed.

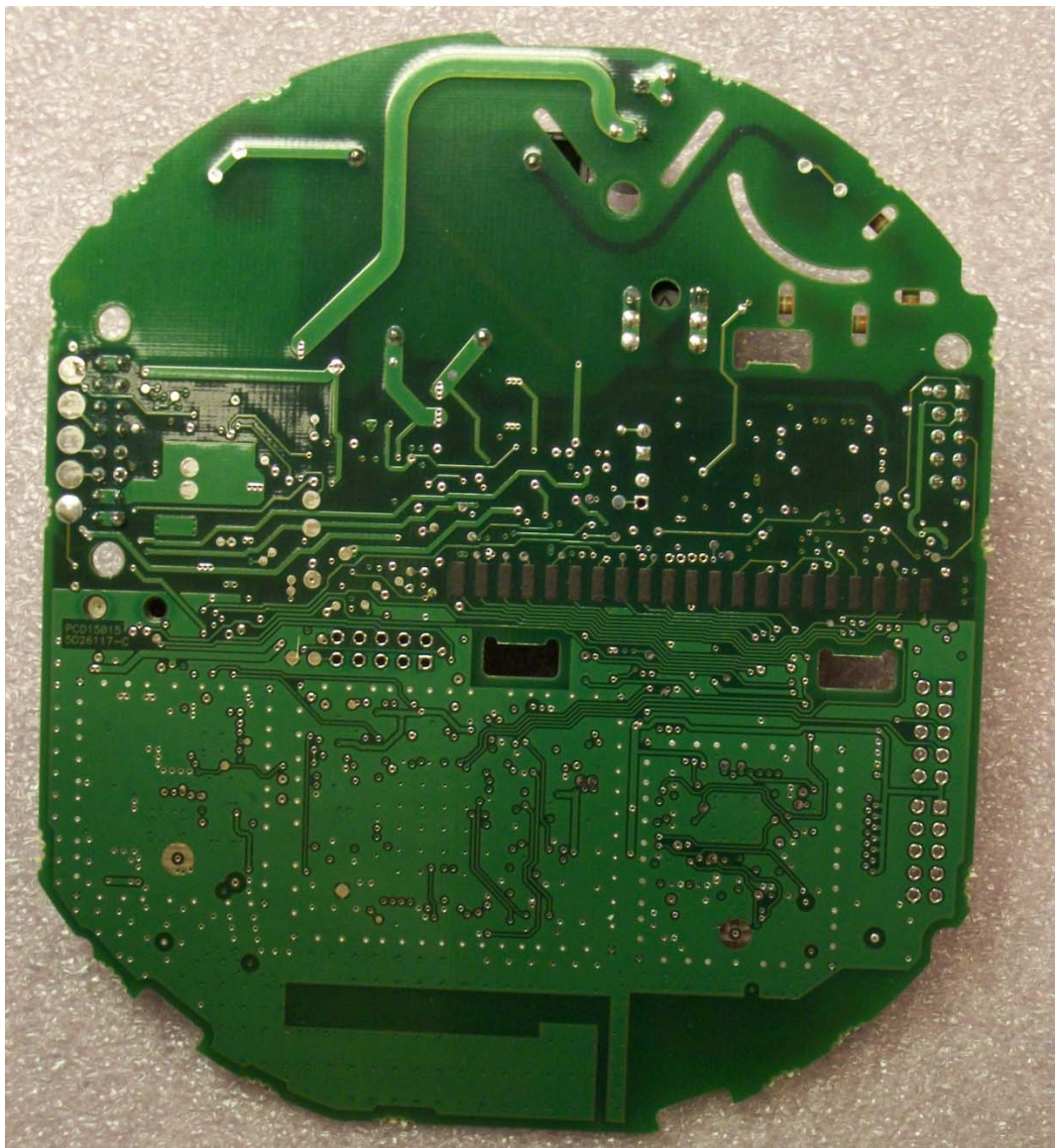


Figure 2: Solder Side View of REXUAI-NZ PCBA

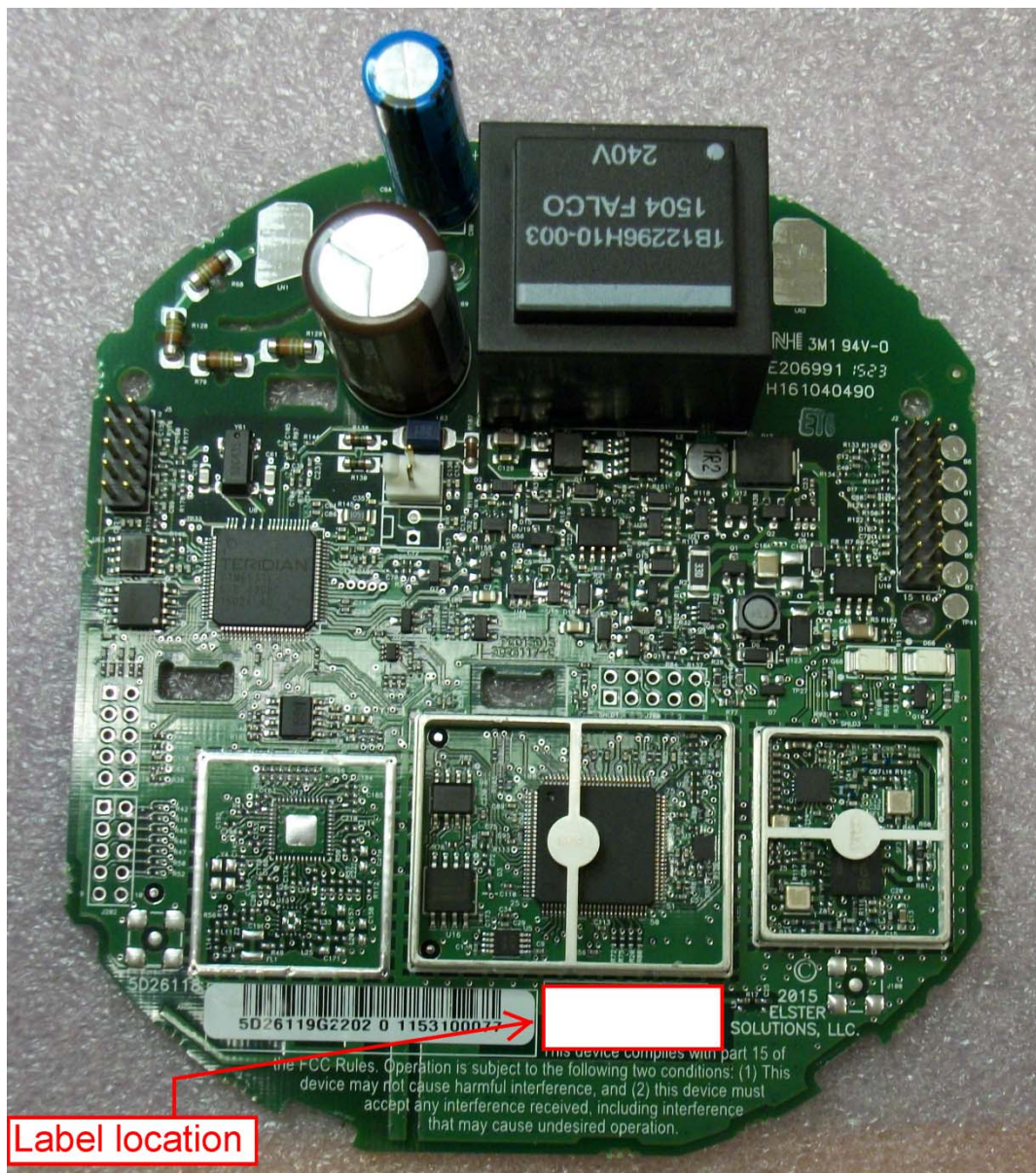


Figure 3: REXUAI-NZ with shield lids removed