



Excellence in Compliance Testing

Certification Exhibit

FCC ID: QZC-REXUAI

FCC Rule Part: 15.247

ACS Project Number: 15-0285

Manufacturer: Elster Solutions, LLC
Model: REXUAI

Internal Photos

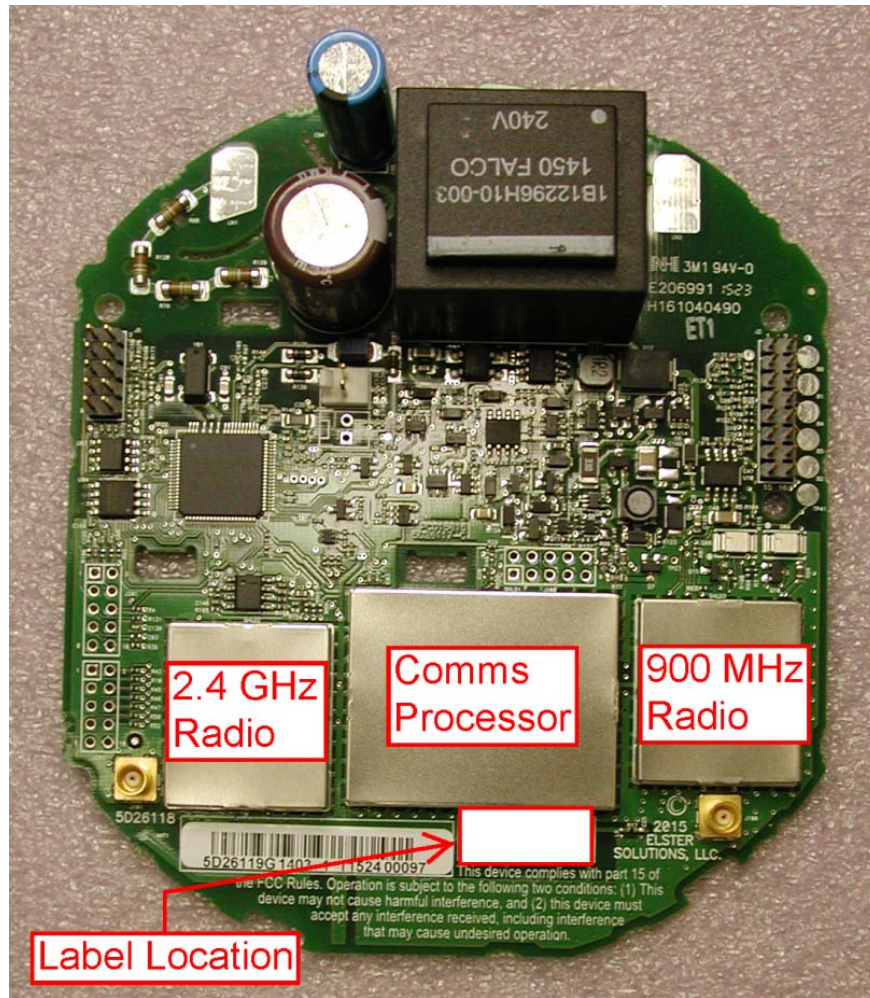


Figure 1: Component Side View of REXUAI PCBA

Figure 1 shows the component side of the REXUAI printed circuit board assembly. The 900 MHz antenna is printed on the board beneath the FCC compliance statement. The 2.4 GHz antenna is printed directly beneath the bar code label on the left side. The location of the FCC/IC ID label is indicated. For the model REXUA, the ID is silkscreened on the board. For other models, including the REXUAI, the appropriate ID label is permanently adhered over top of the silkscreened ID. Figure 2 shows the solder side of the PCBA while Figure 3 shows the radios with shield covers removed.

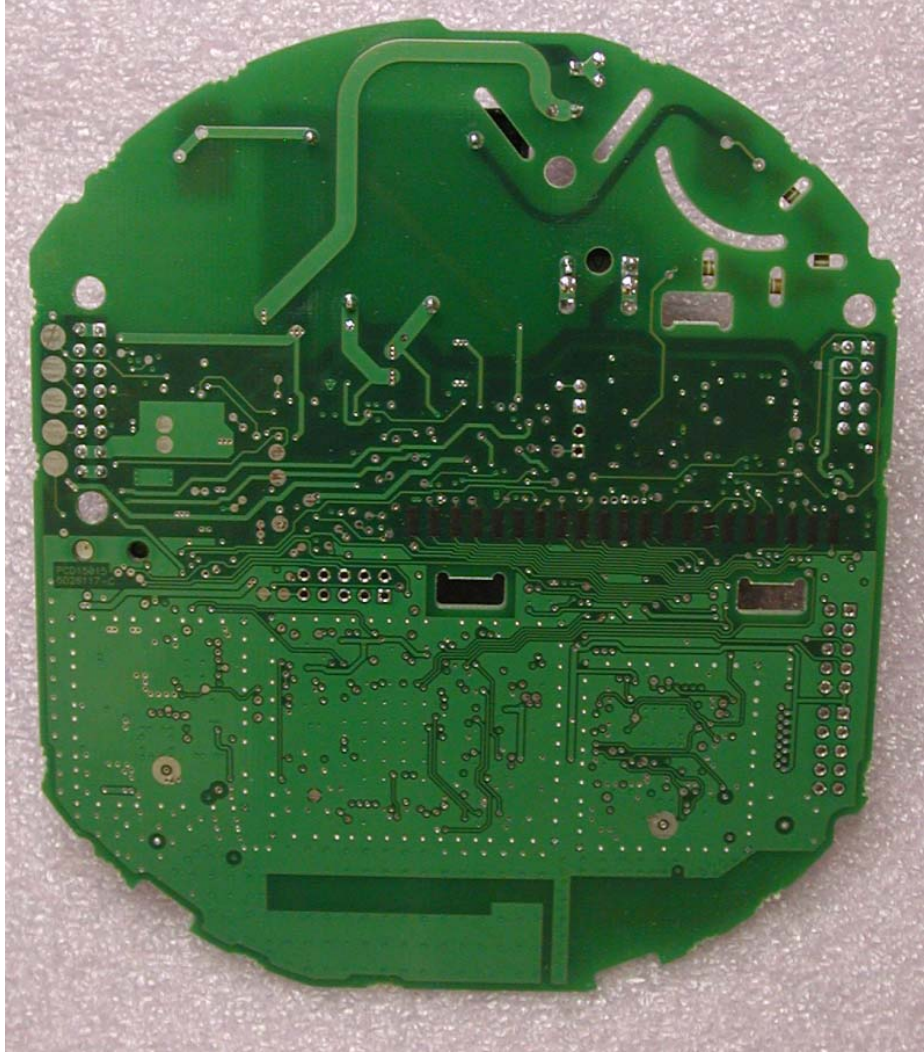


Figure 2: Solder Side View of REXUA PCBA

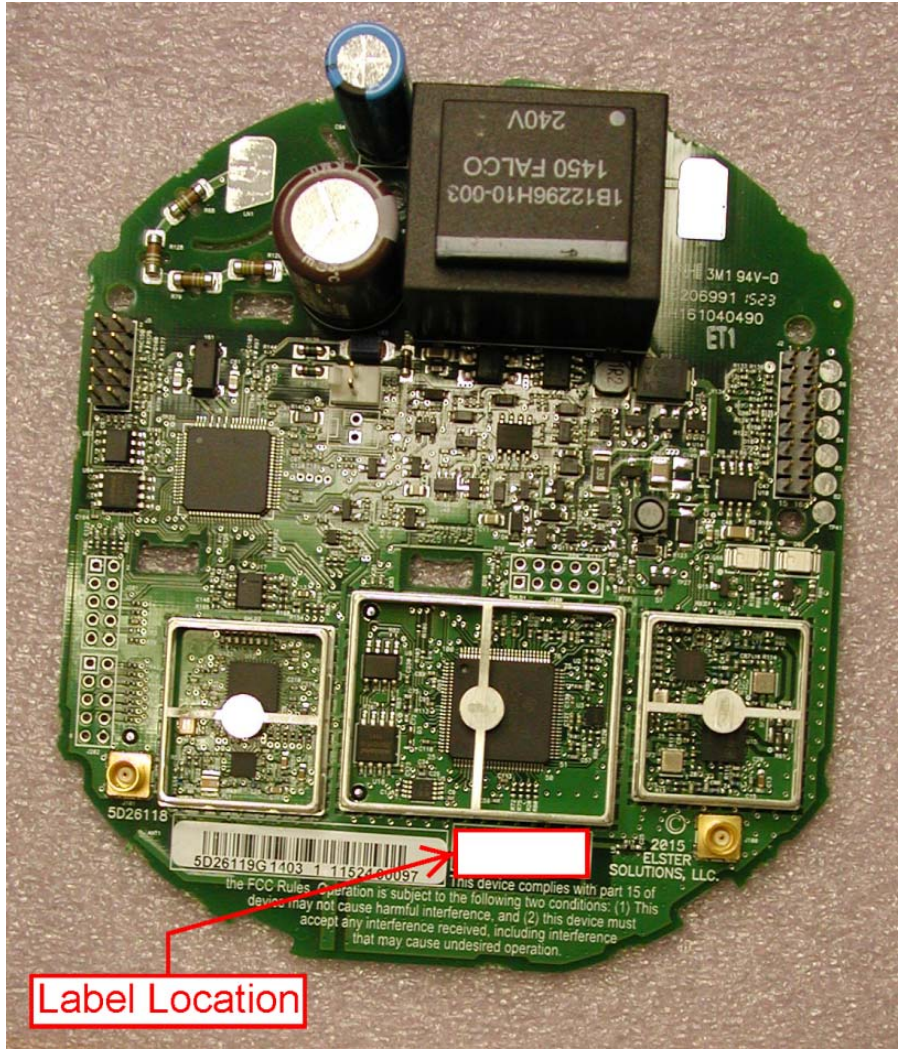


Figure 3: REXUA with shield lids removed