

Certification Exhibit

**FCC ID: QZC-REXUA
IC: 4557A-REXUA**

**FCC Rule Part: 15.247
IC Radio Standards Specification: RSS-247**

ACS Project Number: 15-0285

**Manufacturer: Elster Solutions, LLC
Model: REXUA**

Internal Photos

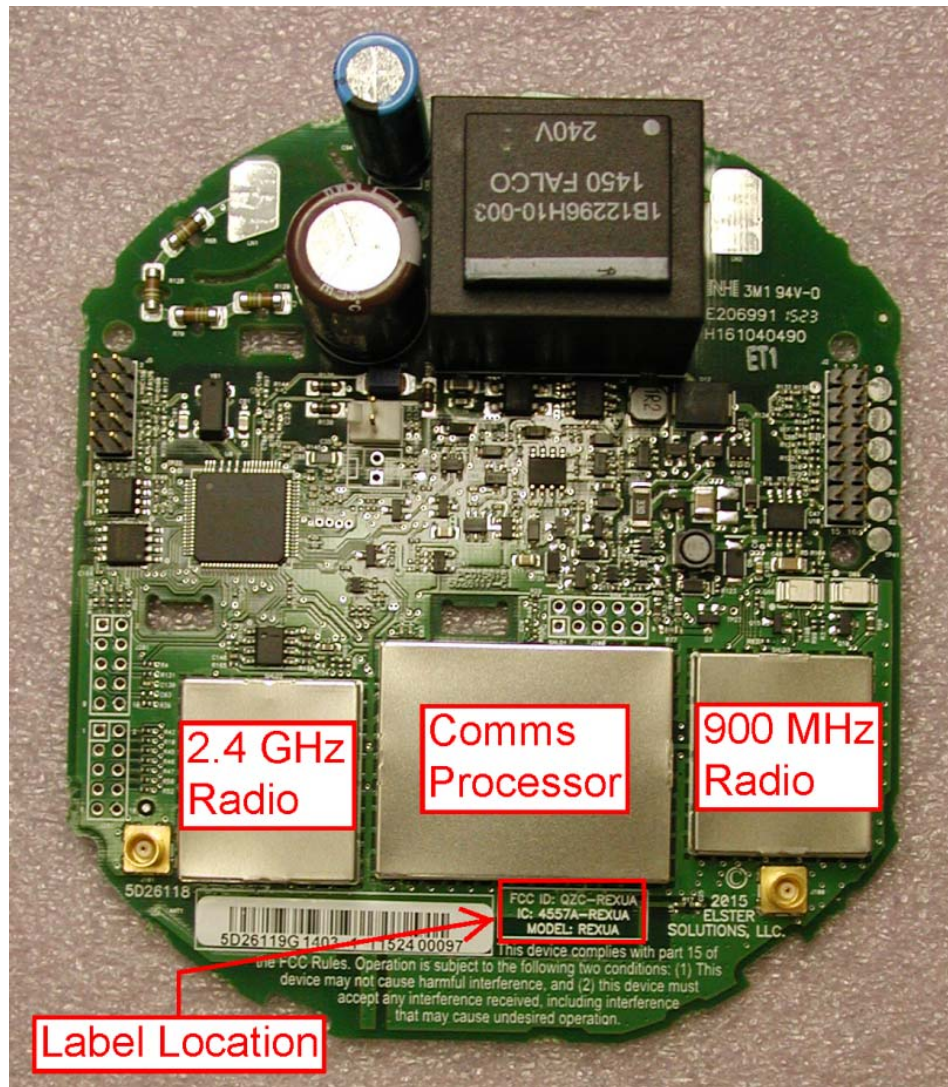


Figure 1: Component Side View of REXUA PCBA

Figure 1 shows the component side of the REXUA printed circuit board assembly. The 900 MHz antenna is printed on the board beneath the FCC compliance statement. The 2.4 GHz antenna is printed directly beneath the bar code label on the left side. The location of the FCC/IC ID label is indicated. For the model REXUA, the ID is silkscreened on the board. For other models, the appropriate ID label is permanently adhered over top of the silkscreened ID. Figure 2 shows the solder side of the PCBA while Figure 3 shows the radios with shield covers removed.

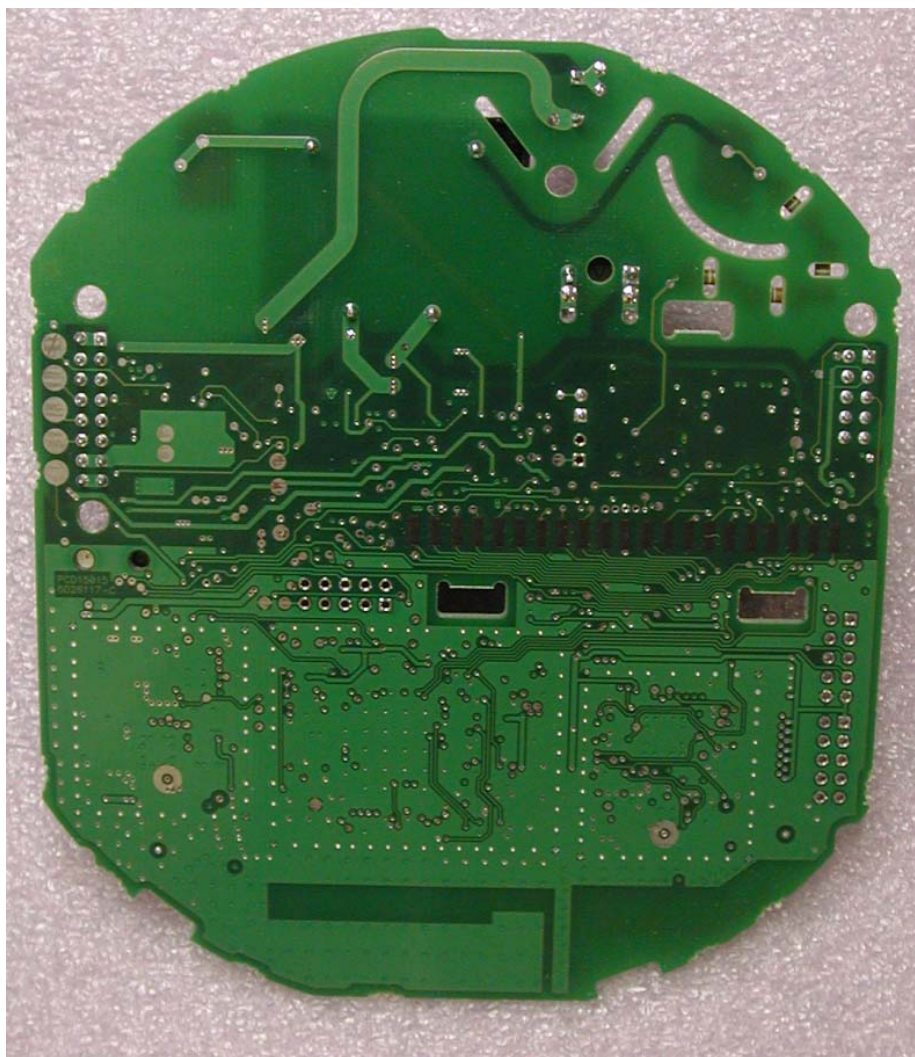


Figure 2: Solder Side View of REXUA PCBA



Figure 3: REXUA with shield lids removed