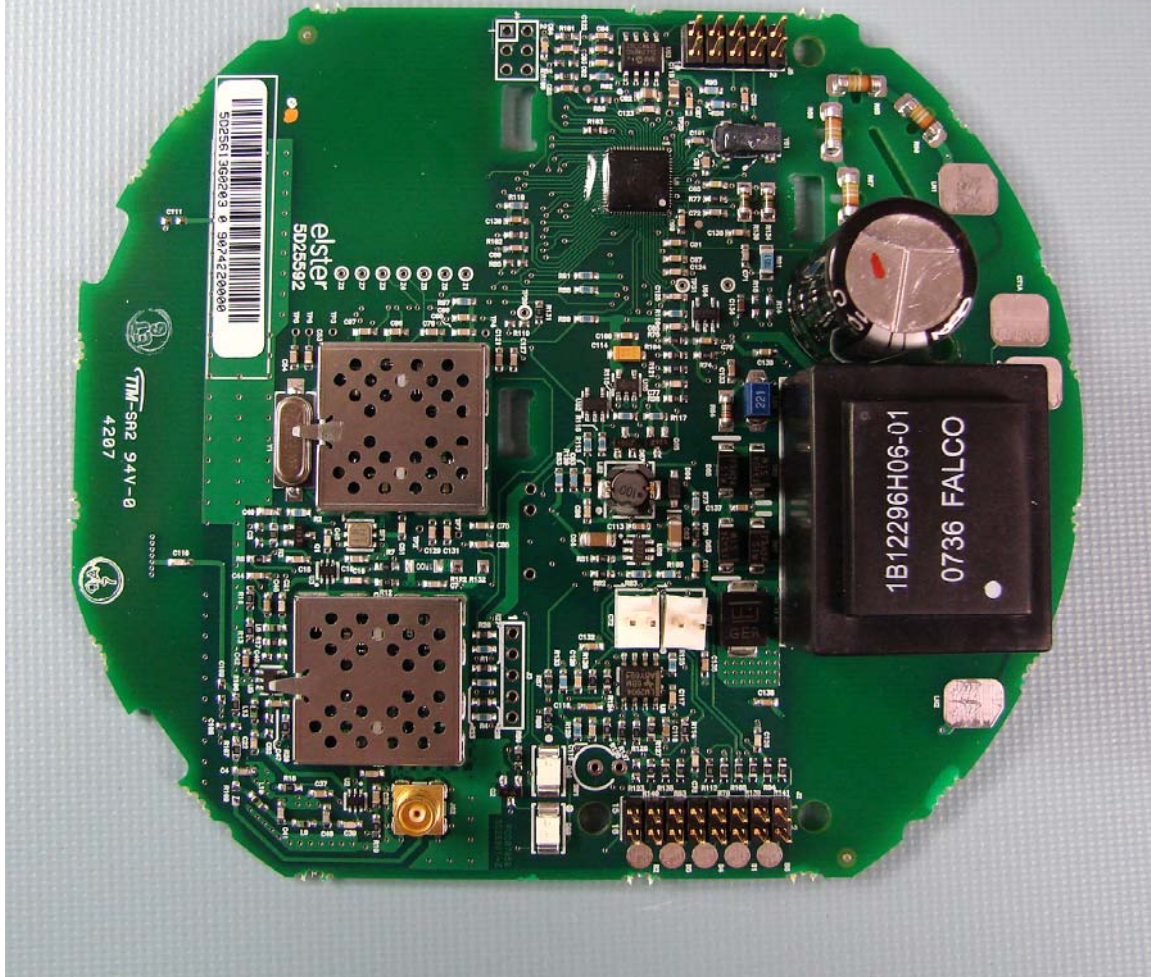


INTERNAL ASSEMBLY VIEW



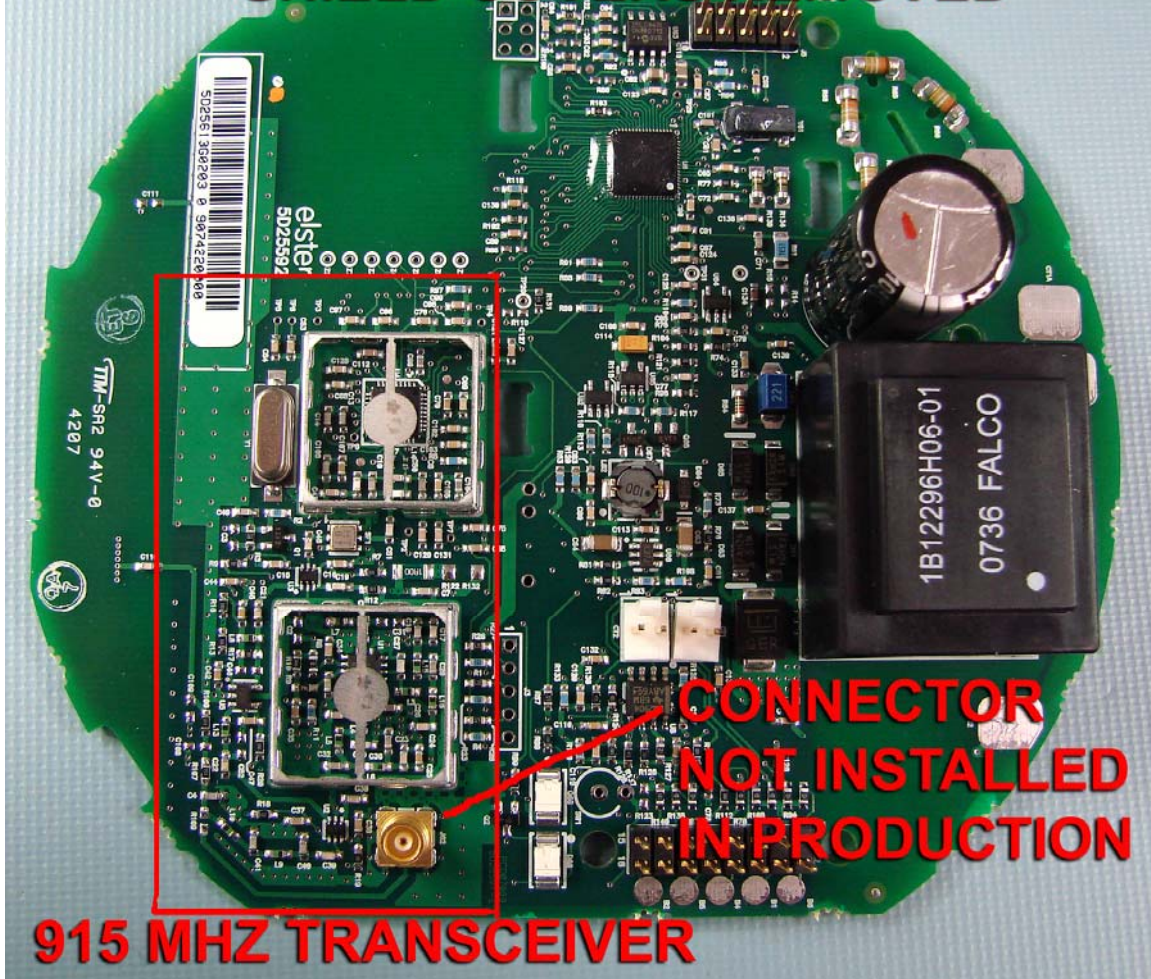
INTERNAL ASSEMBLY SHOWING  
PCB INSTALLED IN FRONT COVER

# PCB COMPONENT SIDE



INTERNAL PRINTED CIRCUIT BOARD  
TOP VIEW

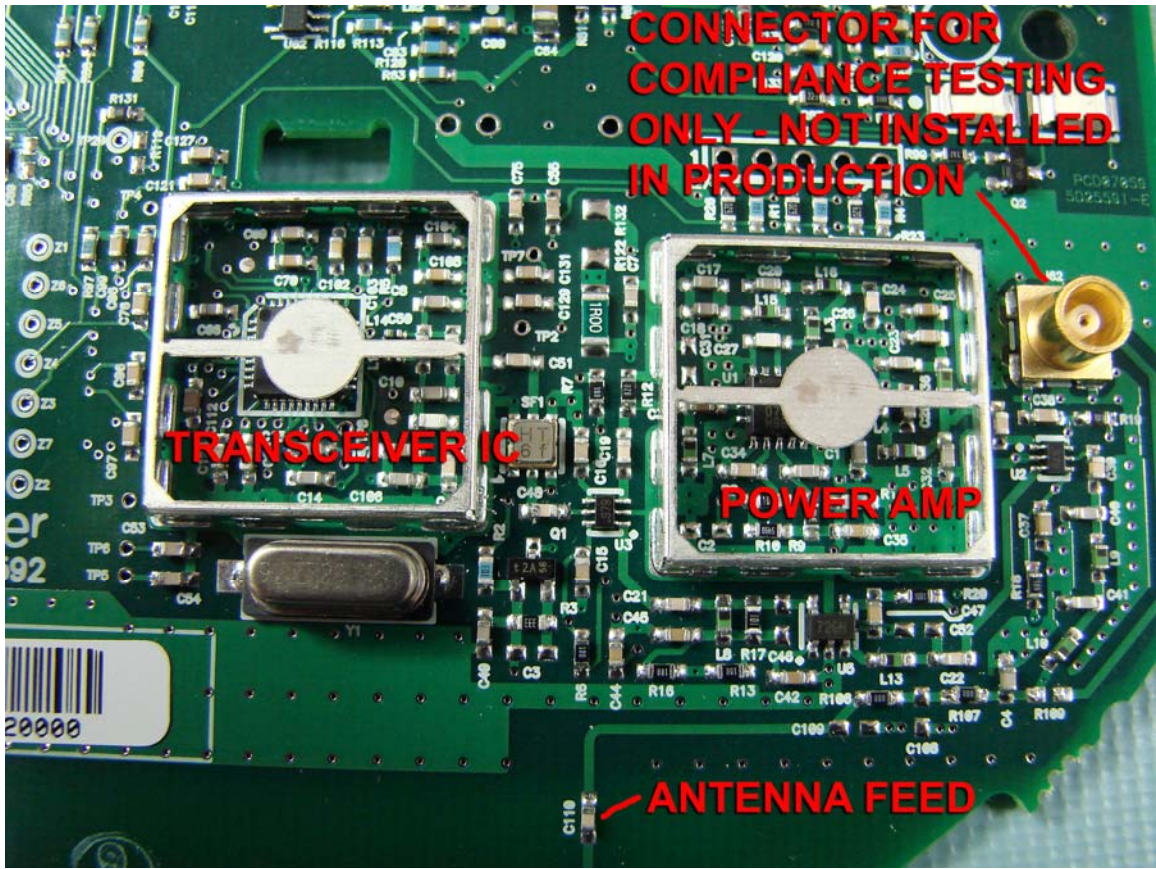
**PCB COMPONENT SIDE  
SHIELD COVERS REMOVED**



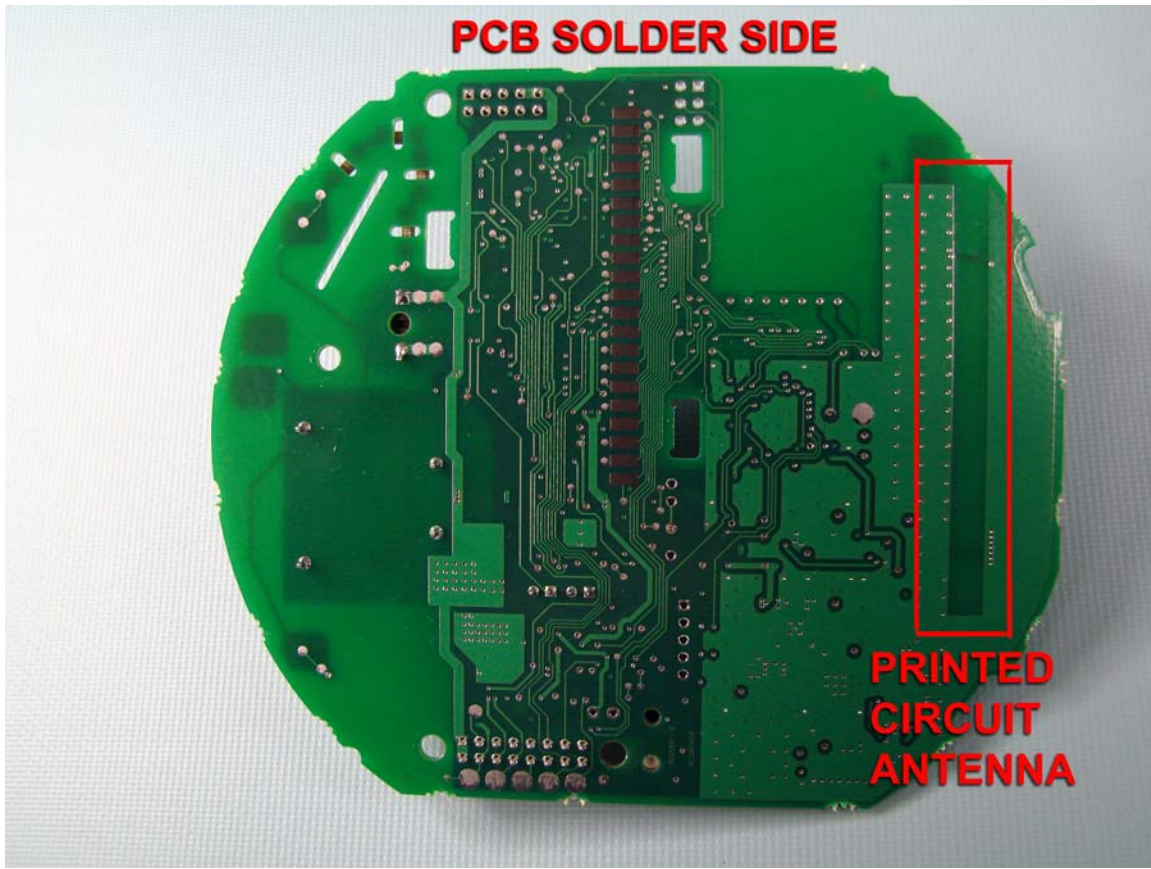
**CONNECTOR  
NOT INSTALLED  
IN PRODUCTION**

**915 MHZ TRANSCEIVER**

TOP VIEW OF PCB SHOWING LOCATION OF 915 MHZ RADIO WITH SHIELDS REMOVED



CLOSE-UP OF 915 MHZ RADIO WITH SHIELDS REMOVED SHOWING TRANSCEIVER IC, POWER AMP AND ANTENNA FEED



INTERNAL PRINTED CIRCUIT BOARD  
BOTTOM VIEW SHOWING PRINTED CIRCUIT ANTENNA