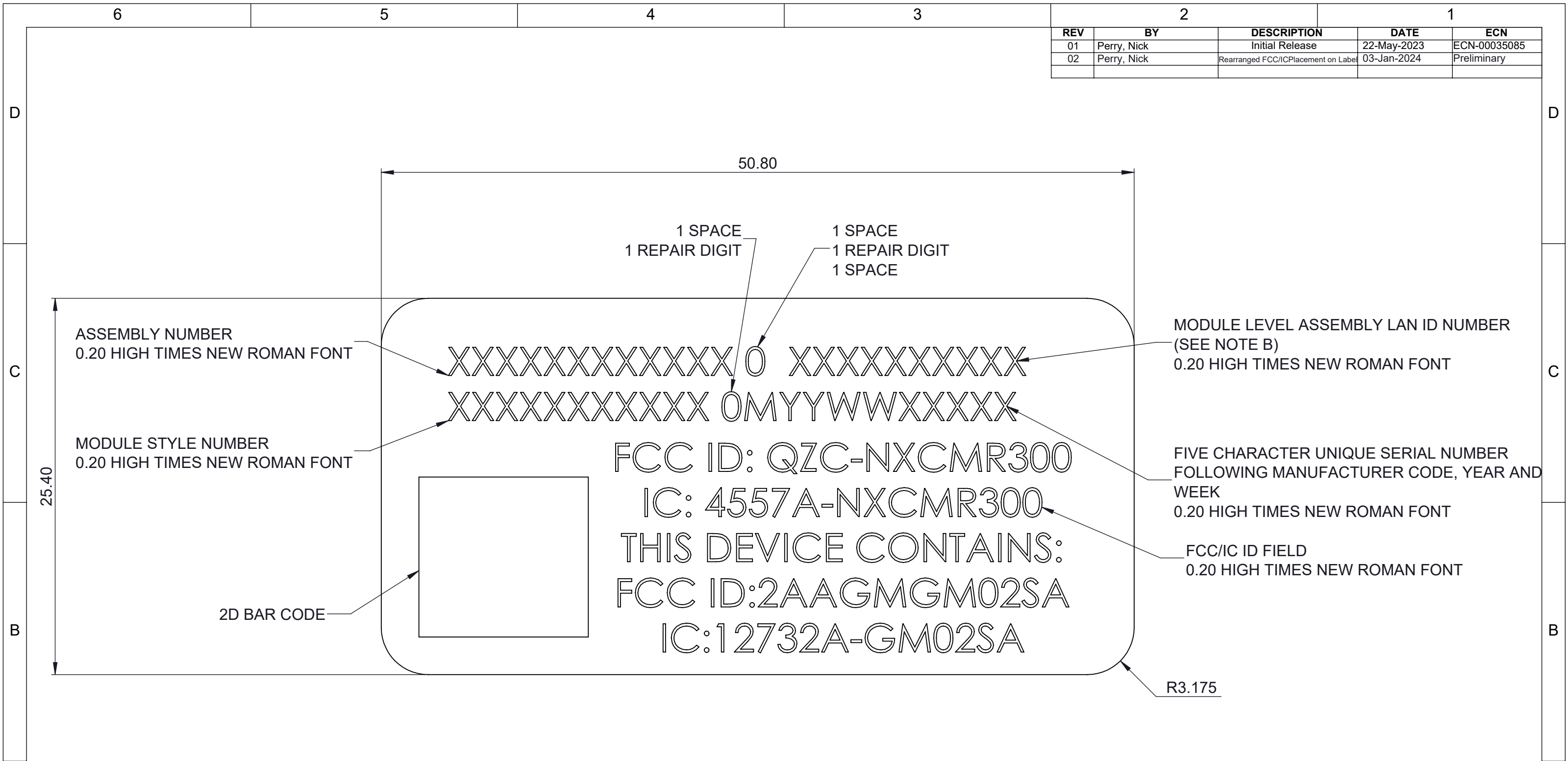


REV	BY	DESCRIPTION	DATE	ECN
01	Perry, Nick	Initial Release	22-May-2023	ECN-00035085
02	Perry, Nick	Rearranged FCC/IC Placement on Label	03-Jan-2024	Preliminary



- MANUFACTURING NOTES:
- A. USE PERMANENT BLACK INK AS RECOMMENDED BY THE LABEL STOCK MANUFACTURER. CENTER EACH 23-CHARACTER CODE. 2D BARCODE SHOULD HAVE SHARP BLACK LINES AND CLEAN WHITE SPACES. REFER TO HONEYWELL DRAWING 1B12181 FOR ADDITIONAL BARCODE REQUIREMENTS AND SERIAL NUMBER FORMAT DESCRIPTION.
  - B. THE 2D BARCODE AND HUMAN READABLE LAN ID NUMBER CORRESPOND TO THE UPPER LEVEL MODULE ASSEMBLY.
  - C. REFER TO THE MODULE LEVEL ASSEMBLY PROCESS SPECIFICATIONS FOR SPECIFIC INSTRUCTIONS RELATING TO SCANNING, PRINTING AND APPLYING THE LABEL DURING THE MANUFACTURING PROCESS.
  - D. MATERIAL: WHITE POLYESTER THERMAL TRANSFER LABEL STOCK (ROLL FORM), REFERENCE HONEYWELL P/N 4075B04H15

KEY CRITICAL DIMENSION

DRAWN: H533247 DATE: 22-May-2023 10:41 APPROVED: Gronmeyer, Larry DATE: 22-May-2023	TITLE: Label, Serial Number & FCC ID, NXCM R300
SIZE (ANSI): B SCALE: 2:1	DEFAULT TOLERANCE: ISO 2768-mk
NUMBER: 3013-1173-001	REVISION: 02
NOTE: DRAWING DIMENSIONED IN MILLIMETERS	
SHEET 1 OF 1	