

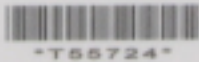


Location of exterior label for FCC ID: QZC-ILC24

ZDA300Q4082-54
TYPE A3TL

SERIAL # 10495730
COLLECTOR T55724

APS



"T55724"

CL200, 120V, 2W, 60Hz
FM 15 Walthour Meter
R3.03.06-0945KG-01F3CB

Kh 3.6
P/R 12
TA 30 A

CONTAINS FCCID: QZC-ILC24

RESET

ACT

ELSTER

ID 002=MAX W
ID 003=MAX VAR



LAN ID: 118 - E002910312
CONTAINS IC: 4557A - ILC24

Ks 21.6 TYPE A3RL ZD3310P80L4-12

elster



"431600"

E0957

1-200A, 120-247V, 3 EL Y, 60Hz

Dem. Int.: 15MIN, Update: 5MIN, 200 kW MAX

Energysource Hydro

TP431600

11608717

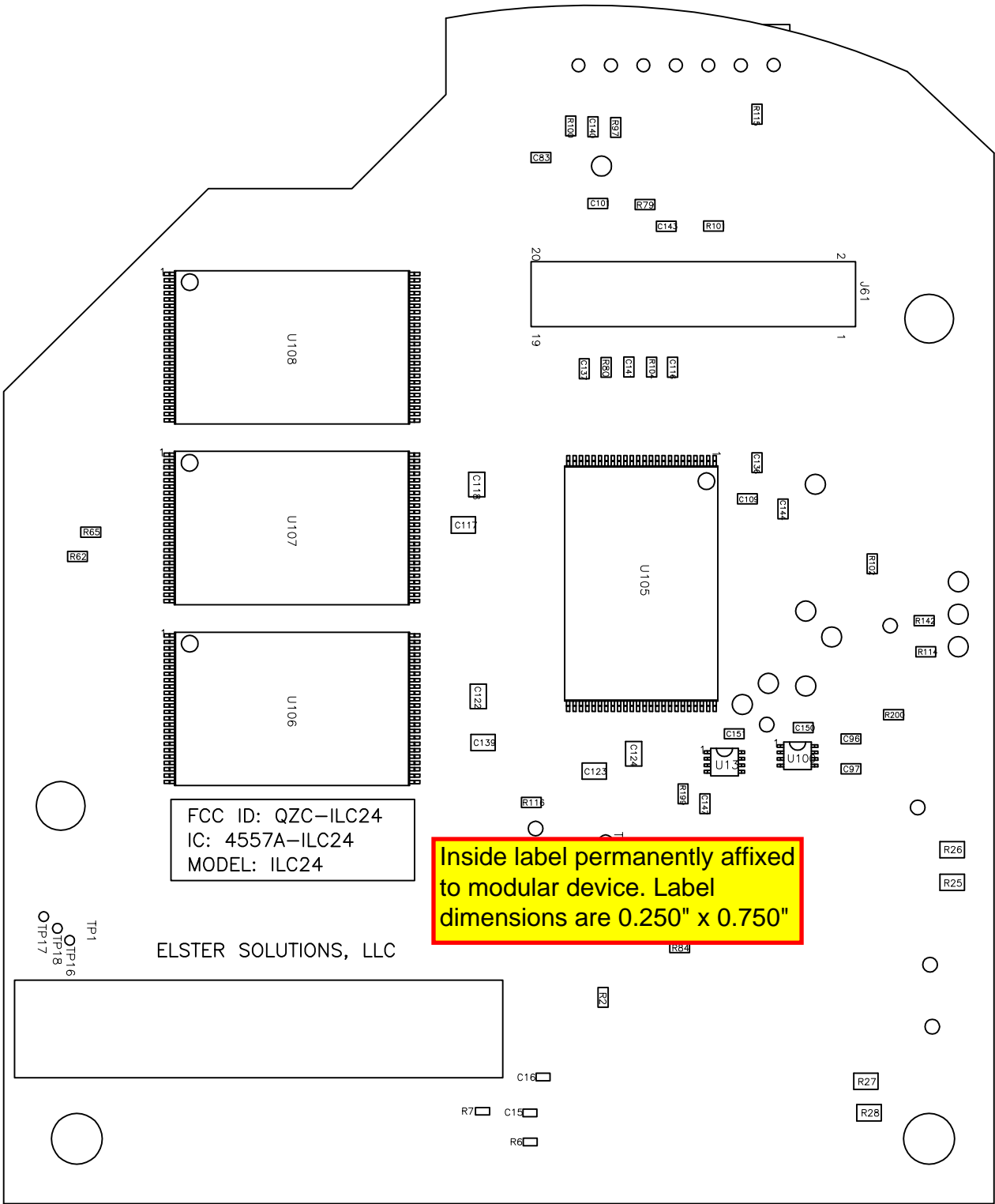


RS-03-00-100SKD-01FAD4

RESET

ACT

Location of exterior label for IC ID: 4557A-ILC24



FCC ID: QZC-ILC24
IC: 4557A-ILC24
MODEL: ILC24

Inside label permanently affixed to modular device. Label dimensions are 0.250" x 0.750"

ELSTER SOLUTIONS, LLC

TP1
OTP16
OTP18
OTP17

C18
R7 C15
R6

R27
R28