

## Annex 2: External EUT Photographs to TEST REPORT No.: 17-1-0106801T10b

According to:  
**FCC Regulations**  
Part 15.107 Class B  
Part 15.109 Class B







**ISED-Regulations**  
RSS-Gen, Issue 5

for

**BURY GmbH & Co. KG**

**Wireless-Charging-Universal 01.1978.000  
+ Cupholder 01.2041.000**

FCC-ID: QZ9-WCU  
ISED: 5927A-WCU

Laboratory Accreditation and Listings		
 Accredited EMC-Test Laboratory	 Industry Canada Reg. No.: 3462D-1 Reg. No.: 3462D-2 Reg. No.: 3462D-3	 Voluntary Controls for Electromagnetic Emissions  Reg. No.: R-20013, C-20009, T-20006, G-20013
 <b>WiFi</b> ALLIANCE	 <b>ctia</b> Authorized Test Lab <small>Lab Code: 20011130-00</small>	 <b>FCC</b> FEDERAL COMMUNICATIONS COMMISSION USA MRA US-EU 0003
accredited according to DIN EN ISO/IEC 17025		
<b>CETECOM GmbH</b> Laboratory Radio Communications & Electromagnetic Compatibility Im Teelbruch 116 • 45219 Essen • Germany Registered in Essen, Germany, Reg. No.: HRB Essen 8984 Tel.: + 49 (0) 20 54 / 95 19-954 • Fax: + 49 (0) 20 54 / 95 19-964 E-mail: info@cetecom.com • Internet: www.cetecom.com		
Laboratory Accreditation and Listings		

## **Table of contents**

<b>1. EXTERNAL EUT PHOTOGRAPHS .....</b>	<b>3</b>
------------------------------------------	----------

## 1. External EUT photographs



Photograph 1: EUT A – front view



Photograph 2: EUT A – rear view



**Photograph 3: EUT B – front view**

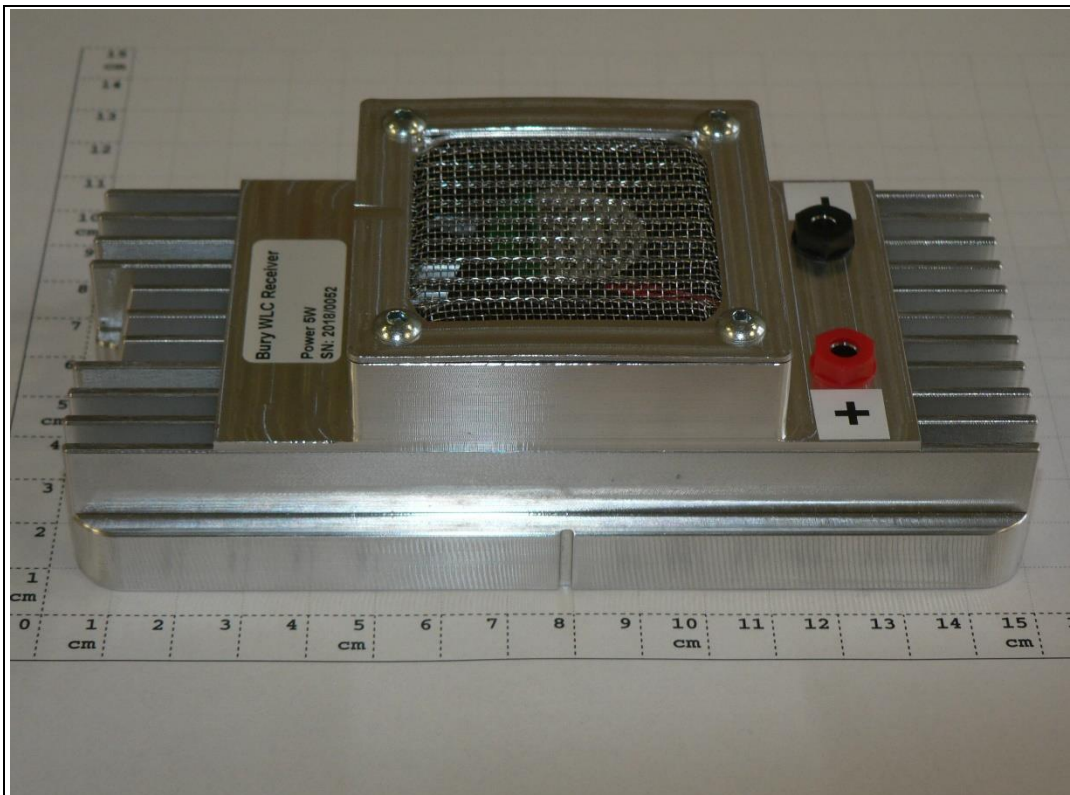


**Photograph 4: EUT B – rear view**

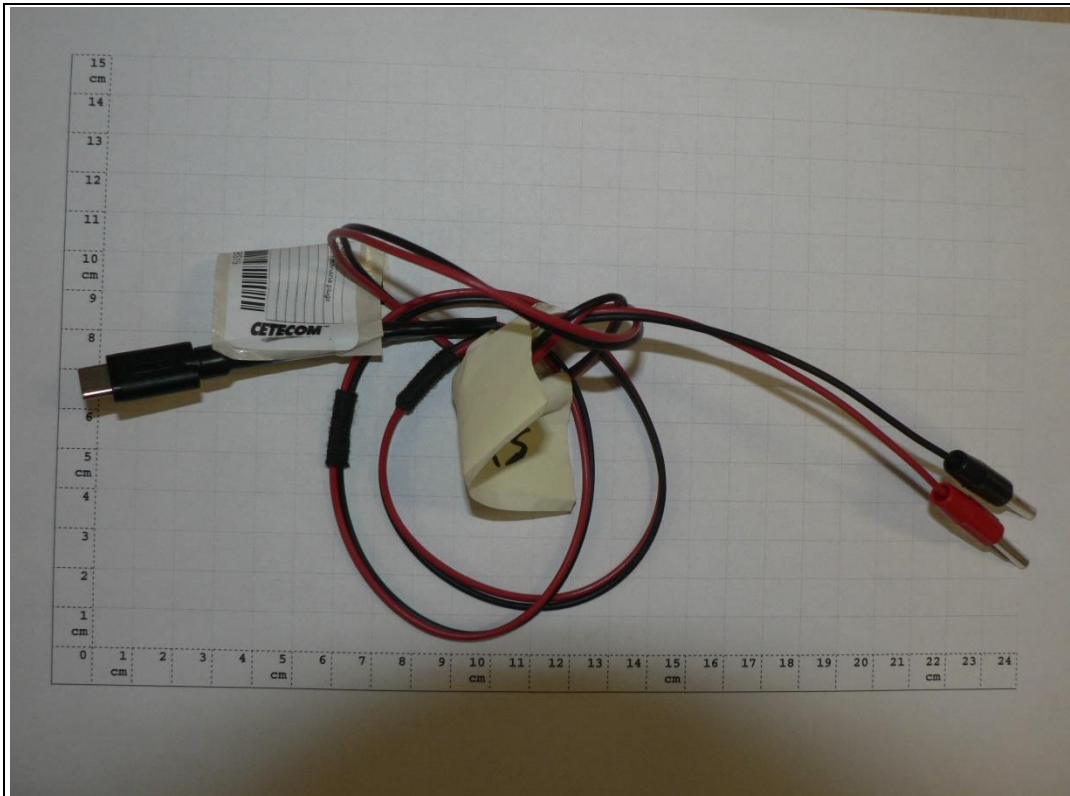




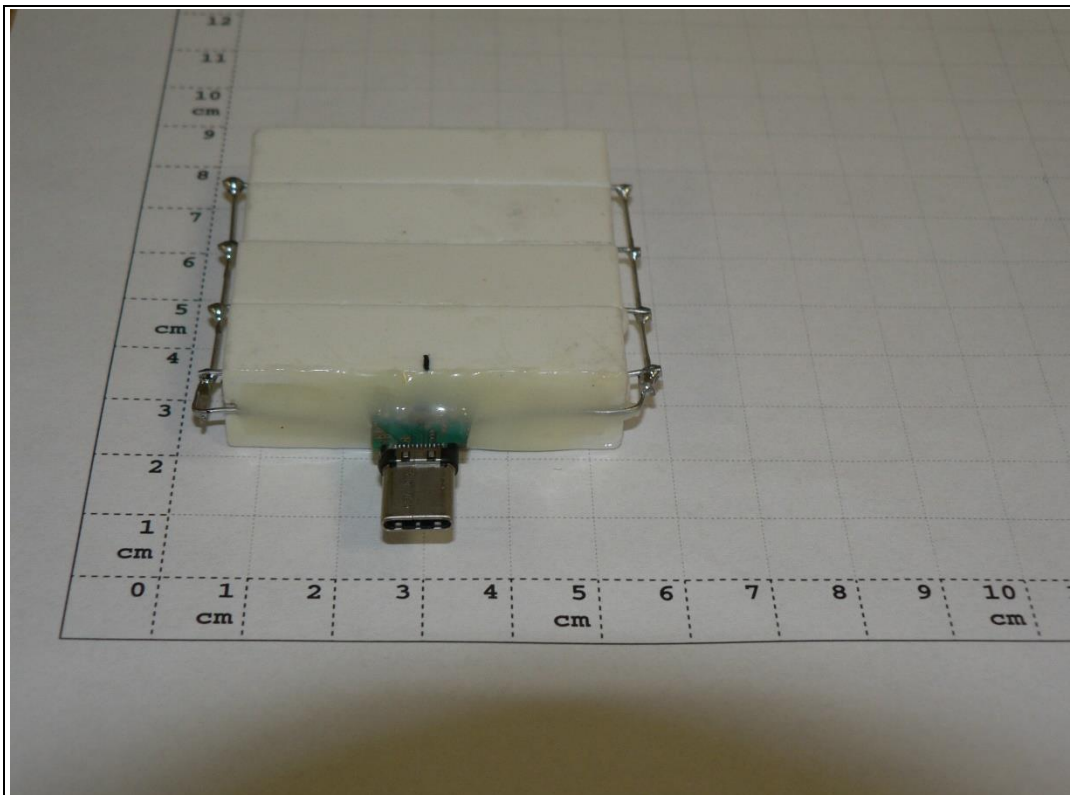
**Photograph 5:** EUT C – rear view



**Photograph 6:** AE 1

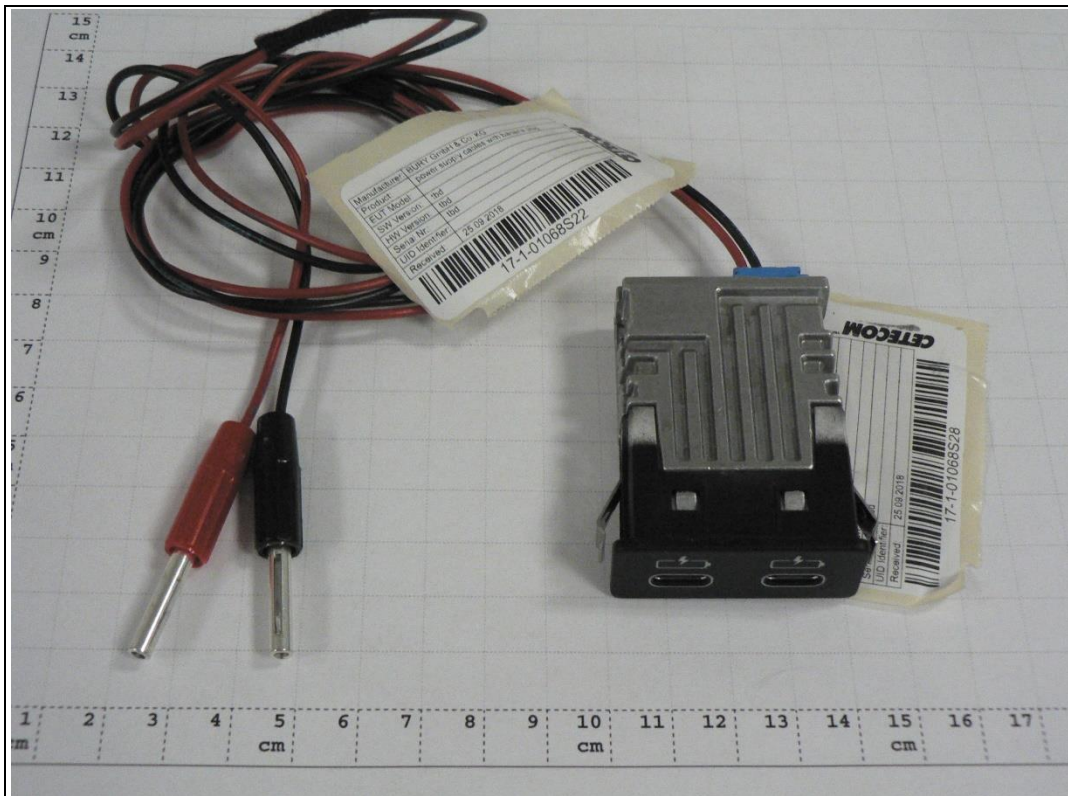


**Photograph 7: AE 2**



**Photograph 8: AE3**





Photograph 9: AE4



Photograph 10: AE5 – USB-C cable