

User Manual - FCC & ISED related statements

Approval and declaration of conformity

This device complies with Part 15 and Part 18 of the FCC Rules and with RSS-210 and RSS-Gen of the Industry Canada Rules. Operation is subject to the following two conditions:

- (1) this device may not cause harmful interference, and
- (2) this device must accept any interference received, including interference that may cause undesired operation.

Le présent appareil est conforme aux CNR d'Industrie Canada applicables aux appareils radio exempts de licence. L'exploitation est autorisée aux deux conditions suivantes:

- (1) l'appareil ne doit pas produire de brouillage, et
- (2) l'utilisateur de l'appareil doit accepter tout brouillage radioélectrique subi, même si le brouillage est susceptible d'en compromettre le fonctionnement.

CAN RSS-216 / CNR-216

CAN ICES-001 (B) / NMB-001 (B)

FCC ID: QZ9-SCRC

IC: 5927A-SCRC

HVIN: WCA CS NFC LCI

PMN: WCA CS NFC LCI

NOTICE:

Changes or modifications made to this equipment not expressly approved by BURY GmbH & Co. KG may void the FCC authorization to operate this equipment.

NOTE:

This equipment has been tested and found to comply with the limits for a Class B digital device, pursuant to Part 15 and to Part 18 of the FCC Rules. These limits are designed to provide reasonable protection against harmful interference in a residential installation. This equipment generates, uses and can radiate radio frequency energy and, if not installed and used in accordance with the instructions, may cause harmful interference to radio communications. However, there is no guarantee that interference will not occur in a particular installation.

Intended Use: WPT:

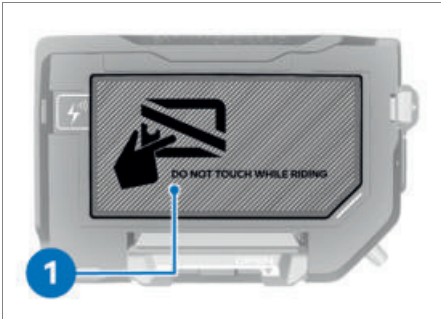
INSTALLING BMW MOTORRAD CONNECTED APP

For iOS and Android smartphones, the BMW Motorrad Connected app can be downloaded free from the corresponding app store. The QR code below is for downloading the app or starting it if it is already installed:



Map and vehicle data can be viewed in the BMW Motorrad Connected app while the vehicle is on the move. The BMW Motorrad Connected app can be operated by means of the Multi-Controller.

REMOVING THE LABEL



- Read the warning on label **1** before using the ConnectedRide Cradle for the first time.
- Remove label **1**.


BLUETOOTH PAIRING

Two Bluetooth devices have to recognise each other before they can communicate. This process of mutual detection is called "pairing". When a device has been paired it is subsequently remembered by the system, so the pairing process is conducted only once, on initial contact.

In the pairing process, a Bluetooth device searches for other Bluetooth-enabled devices within its reception range. The conditions that have to be satisfied before the audio system can recognise another device are as follows:

- The device's Bluetooth function must be active
- The device must be "visible" to others

Please consult the operating instructions of the devices in question for details.

 Despite the standardisation of Bluetooth and the interoperability this has created between many devices, there can be no guarantee that all available Bluetooth devices will function correctly.


ESTABLISHING BLUETOOTH CONNECTION

WARNING

Bluetooth pairing while on the move

Risk of accident due to distraction

- Do not attempt Bluetooth pairing unless the vehicle is at a standstill.

 The smartphone can be connected via Bluetooth to a TFT display at the same time, for example for accepting incoming calls.

- Turn on Bluetooth on the smartphone and open the BMW Motorrad Connected app.
- Insert the ConnectedRide Cradle into the motorcycle's navigation preparation (see the section entitled "Inserting ConnectedRide Cradle into navigation preparation") and switch on the ignition. The LED on the ConnectedRide Cradle shows green.

OPERATION

- Open the BMW Motorrad Connected app.
- Connect a new device in the app.
- Select "BMW_Cradle_xxxx" and wait until the ConnectedRide Cradle is connected.
- Confirm pairing queries issued on the smartphone.
- » Pairing was successful when the ConnectedRide Cradle is shown as connected.
- » This is followed by a tutorial explaining how to insert the smartphone into the ConnectedRide Cradle. See the section entitled "Adapting ConnectedRide Cradle to smartphone" for more information on inserting the smartphone.

ADAPTING CONNECTED RIDE CRADLE TO SMARTPHONE

WARNING

Insufficient clearance from vehicle components

Risk of accident

- Make sure that there is sufficient clearance from the handlebars and other vehicle components such as windscreen and tank bag. If in doubt consult a specialist workshop, preferably an authorised BMW Motorrad retailer.
- If there is not enough clearance, do not use the ConnectedRide Cradle.

ATTENTION

Extreme ambient conditions

Risk of damage


- In extreme ambient or weather conditions such as heavy rainfall, hail and extreme heat, do not insert or leave a smartphone in the ConnectedRide Cradle.
- Make sure that the smartphone is suitable for prevailing ambient conditions, as stated by its manufacturer.

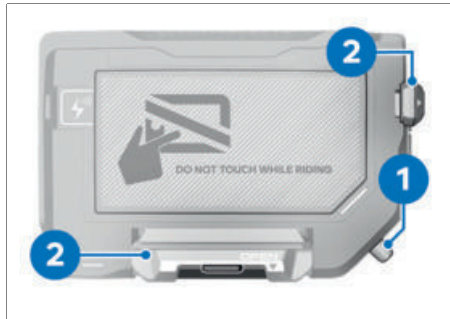
ATTENTION

Vibrations in off-road use

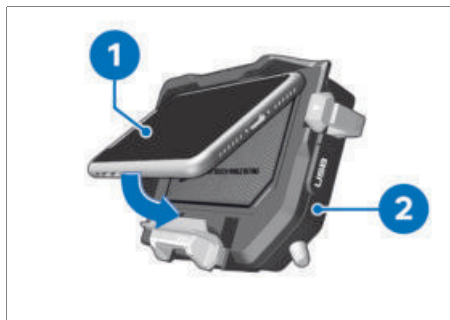
Risk of damage

- When off-riding and when riding on very rough roads, do not insert or leave a smartphone in the ConnectedRide Cradle.

 Do not insert any component or device with a magnetic stripe into the ConnectedRide Cradle, because the information stored on the magnetic stripe could be deleted.

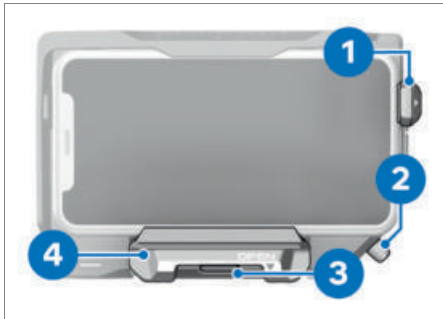


- Slacken screw **1** and ease arms **2** far enough apart to slot the smartphone into the ConnectedRide Cradle.




- Insert the top edge of smartphone **1** into ConnectedRide Cradle **2**. Make sure that the smartphone's charging socket is positioned on the right-hand side of the ConnectedRide Cradle.

- Pivot the bottom edge of smartphone **1** down and insert it into ConnectedRide Cradle **2**.




- Push arms **1** and **4** back until the smartphone is held securely.
- Hold both the arms in position and use button **3** to press arm **4** against the smartphone.
- Tighten screw **2**.
- Make sure that the smartphone is held securely in the ConnectedRide Cradle.
- » To remove or insert the smartphone quickly, slide the bottom arm down and insert or remove the smartphone, as applicable. It is not necessary to re-adjust the cradle by slackening the screw.

- Gently press ConnectedRide Cradle **1** down until it engages.

 The ConnectedRide Cradle is lockable in the bracket mounted on the motorcycle, if this function is supported. The smartphone cannot be locked in the ConnectedRide Cradle.

- Be sure to remove the key when the unit is locked into place.

 When installing the ConnectedRide Cradle in the mount of the navigation preparation, make sure that it is correctly seated. The top securing lug must be completely locked. Check that the red mark of the holder on the vehicle is no longer visible.

INSERTING CONNECTED RIDE CRADLE INTO THE NAVIGATION PREPARATION



- Slip the bottom edge of the ConnectedRide Cradle **1** into the lug of navigation preparation **2** and pivot the top edge forward. Make sure that the ConnectedRide Cradle is installed right way round.

CHARGING SMARTPHONE



WARNING

Obstruction of the steering angle and risk of fire due to improperly routed cables

Driving safety is impaired

- Do not wind cables around the handlebars, and ensure that the handlebars can move freely.
- When routing the cable, ensure that the cable does not come into contact with hot components.



WARNING

Operation of a smartphone while riding the vehicle

Risk of accident

- Always comply with the road traffic regulations in force where you are riding.
- Do not use a smartphone while riding. This applies with the exception of applications without operation, such as hands-free telephony.



Wireless charging can impair operability, damage or destroy the sensitive electronics of radio-operated keys, magnetic stripe cards and other electronic components or devices.



The insertion of metallic objects such as coins, earrings or keys, or other conductive materials into the ConnectedRide Cradle can disrupt the wireless charging function. The ConnectedRide Cradle automatically detects the presence of objects of this nature. The LED indicates this and the wireless charging function is automatically stopped. Wireless charging cannot resume until the object or objects have been removed from the ConnectedRide Cradle.



The ConnectedRide Cradle monitors the temperature in the housing and at the charging cradle to prevent the permissible maximum values from being exceeded. If the temperature limit is exceeded the charging procedure (wireless or USB)

is paused and is not subsequently resumed until the temperature is again within the permissible range.



Never charge the smartphone in conditions of extreme heat or cold or in direct sunlight with the vehicle at a standstill.



Fault states detected while wireless charging is in progress might require the smartphone to be taken completely out of the charging cradle in order for the ConnectedRide Cradle to return to normal operating condition.

General

The ConnectedRide Cradle has an inductive charging function compliant with the Qi standard and a USB-C port for charging by cable. Wireless charging starts automatically when a compatible smartphone is inserted into the ConnectedRide Cradle. Inductive charging is automatically deactivated, if applicable, as soon as a charging cable is connected. Charging can be fully deactivated in the BMW Motorrad Connected app.

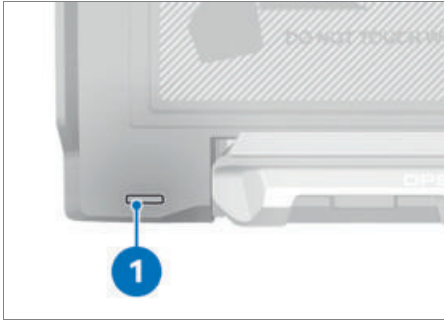
Temperature sensor

An integral temperature sensor protects the ConnectedRide Cradle against overheating. The wireless charging function is switched off at a certain temperature in order to prevent overheating. This overheating protection function is not active when a cable is used for charging. Whenever ambient temperature is correspondingly high, make sure that the smartphone does not get too hot and, if necessary, pause the charging operation.

Charging by cable

When charging by cable, use a charging cable of adequate cross-section that is as short as possible. The charging cable must be reliably secured and it is important to check that clearance from movable vehicle components such as handlebars, instruments and tank bag is sufficient.

LOAD



LED status indicators

The ConnectedRide Cradle has an LED **1** that can indicate the following statuses:

- Slow-flashes green (for 5 seconds): ready for charging
- Shows green: charging (inductive or by cable)
- Slow-flashes green: smartphone fully charged
- Quick-flashes yellow: temperature too high or foreign object(s) detected
- Shows red: general fault