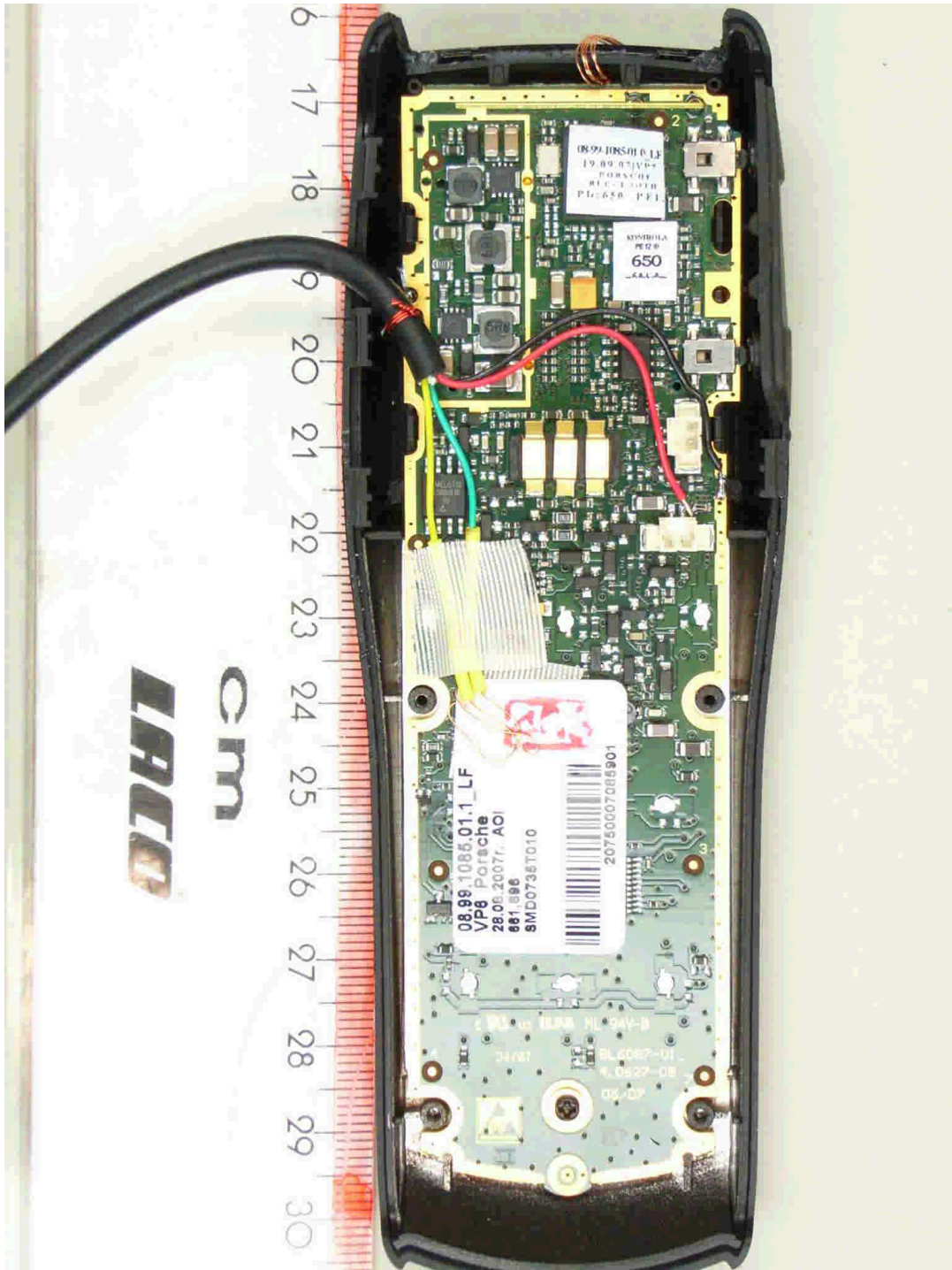


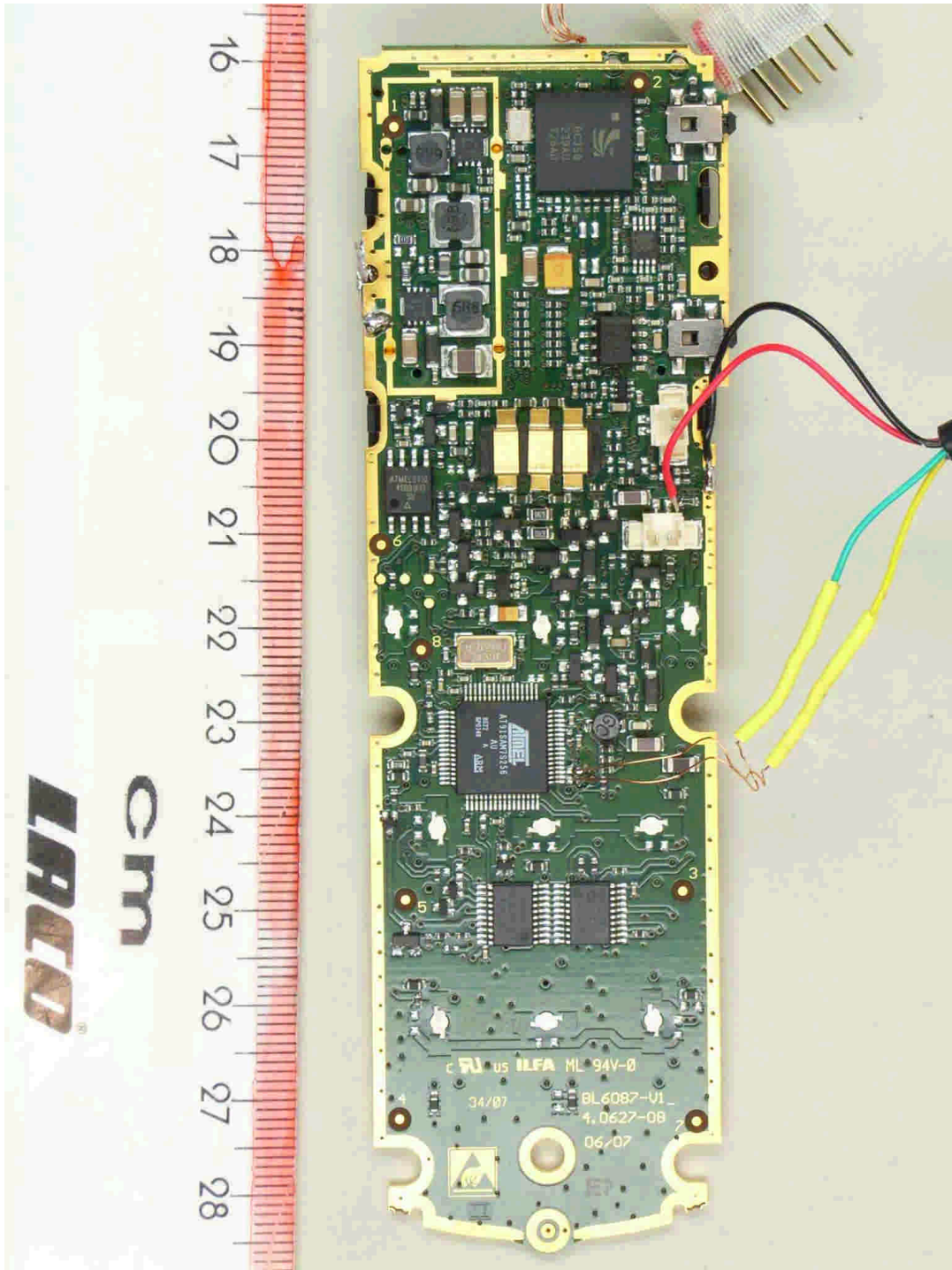
Annex B of test report R72337_B second version
EUT: Porsche Bluetooth Bedienthörer
Manufacturer: Bury GmbH & Co. KG



72337_e.jpg

EUT, internal view

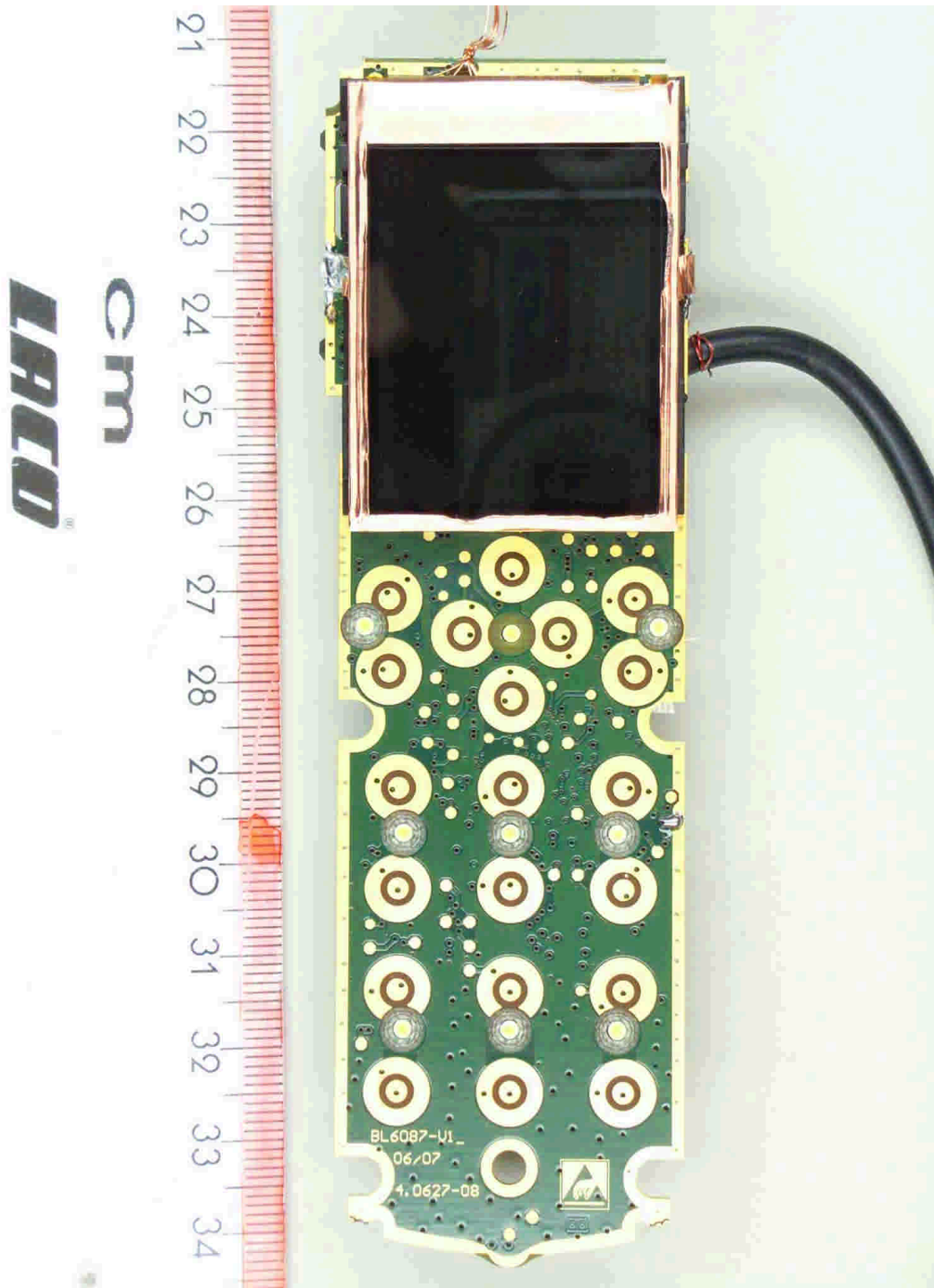
Annex B of test report R72337_B second version
EUT: Porsche Bluetooth Bedienthörer
Manufacturer: Bury GmbH & Co. KG



72337_d.jpg

EUT, PCB, top view

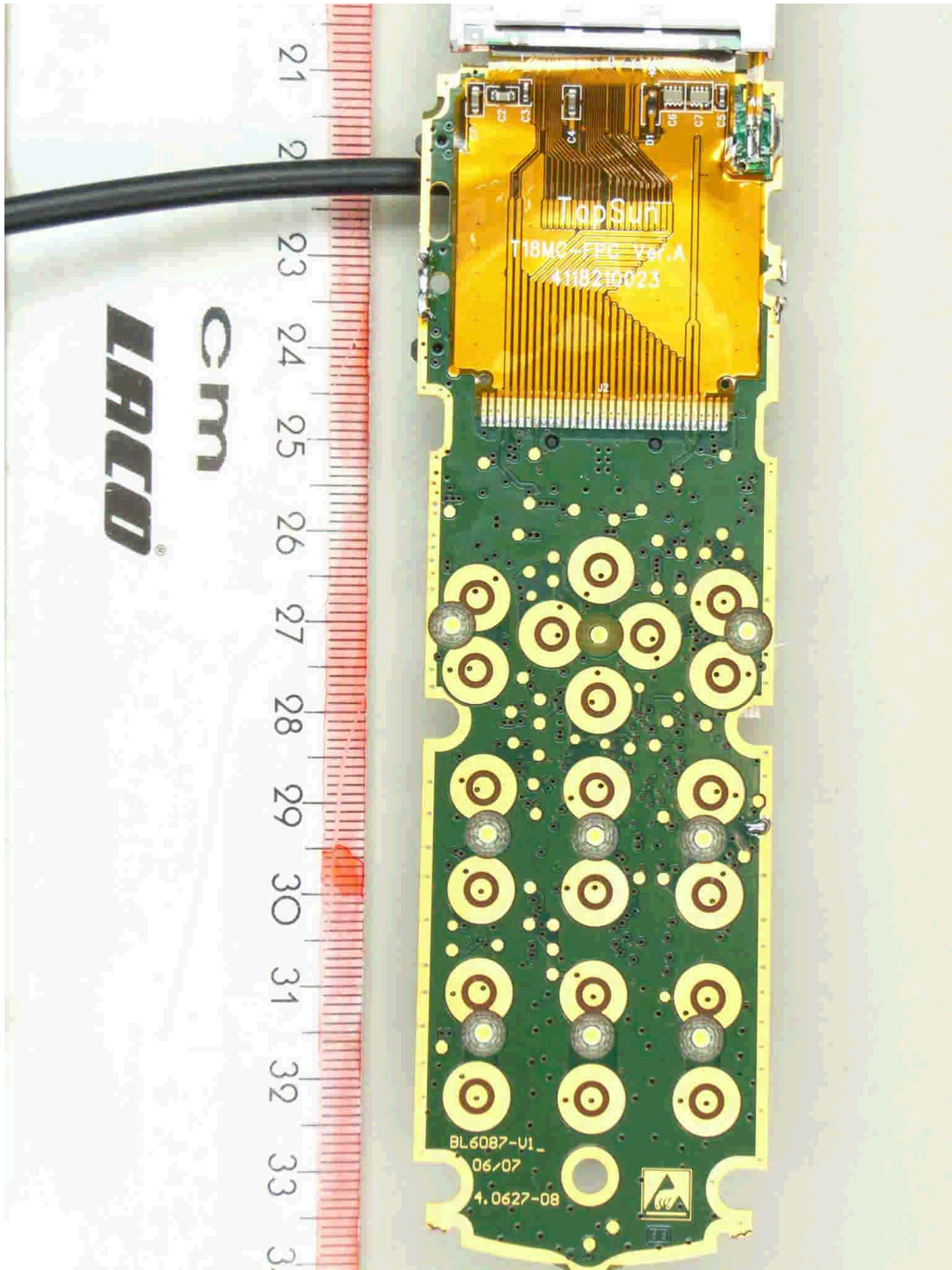
Annex B of test report R72337_B second version
EUT: Porsche Bluetooth Bedienthörer
Manufacturer: Bury GmbH & Co. KG



72337_c.jpg

EUT, PCB, bottom view

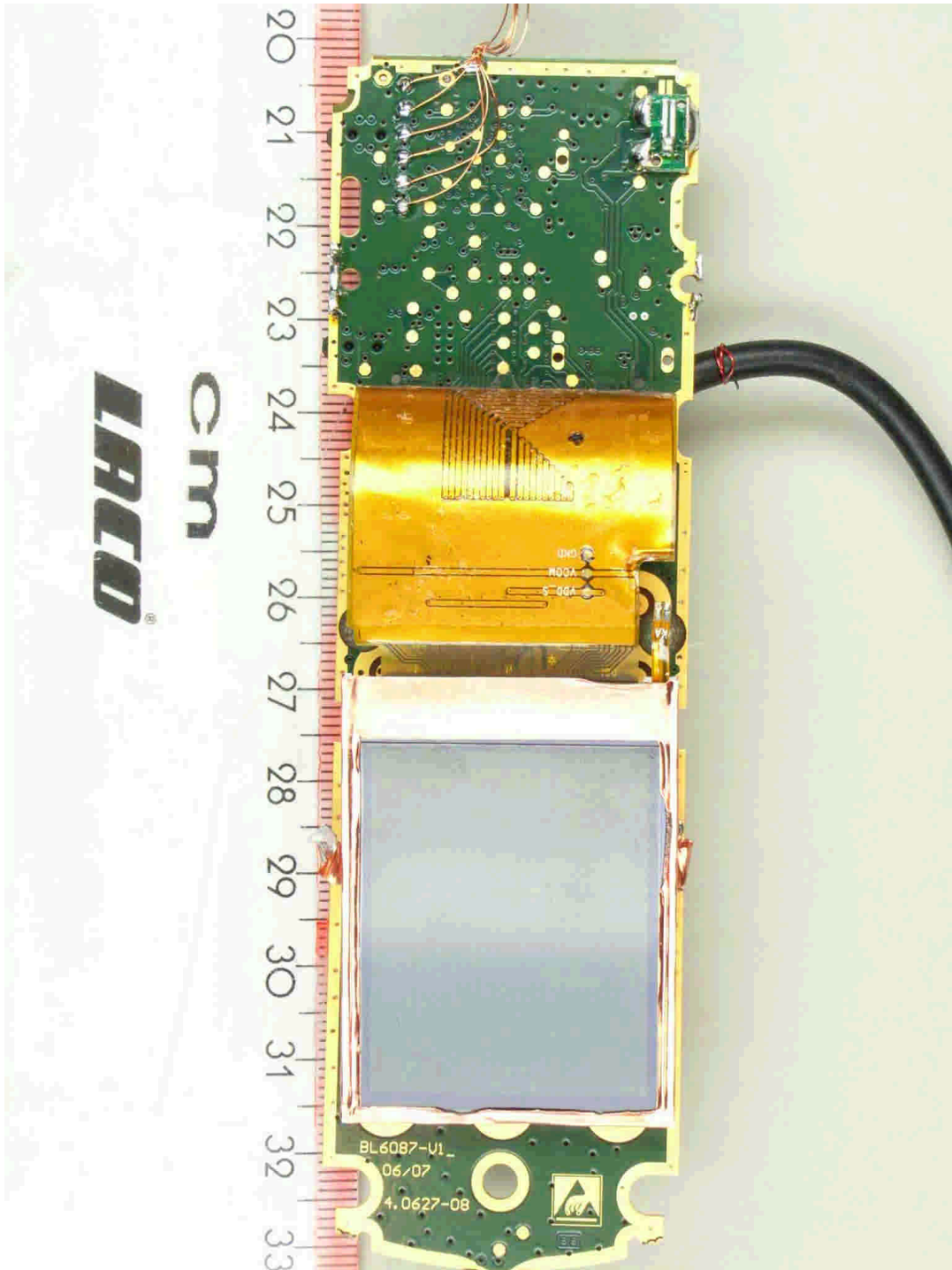
Annex B of test report R72337_B second version
EUT: Porsche Bluetooth Bedienthörer
Manufacturer: Bury GmbH & Co. KG



72337_b.jpg

EUT, PCB, bottom view, display moved

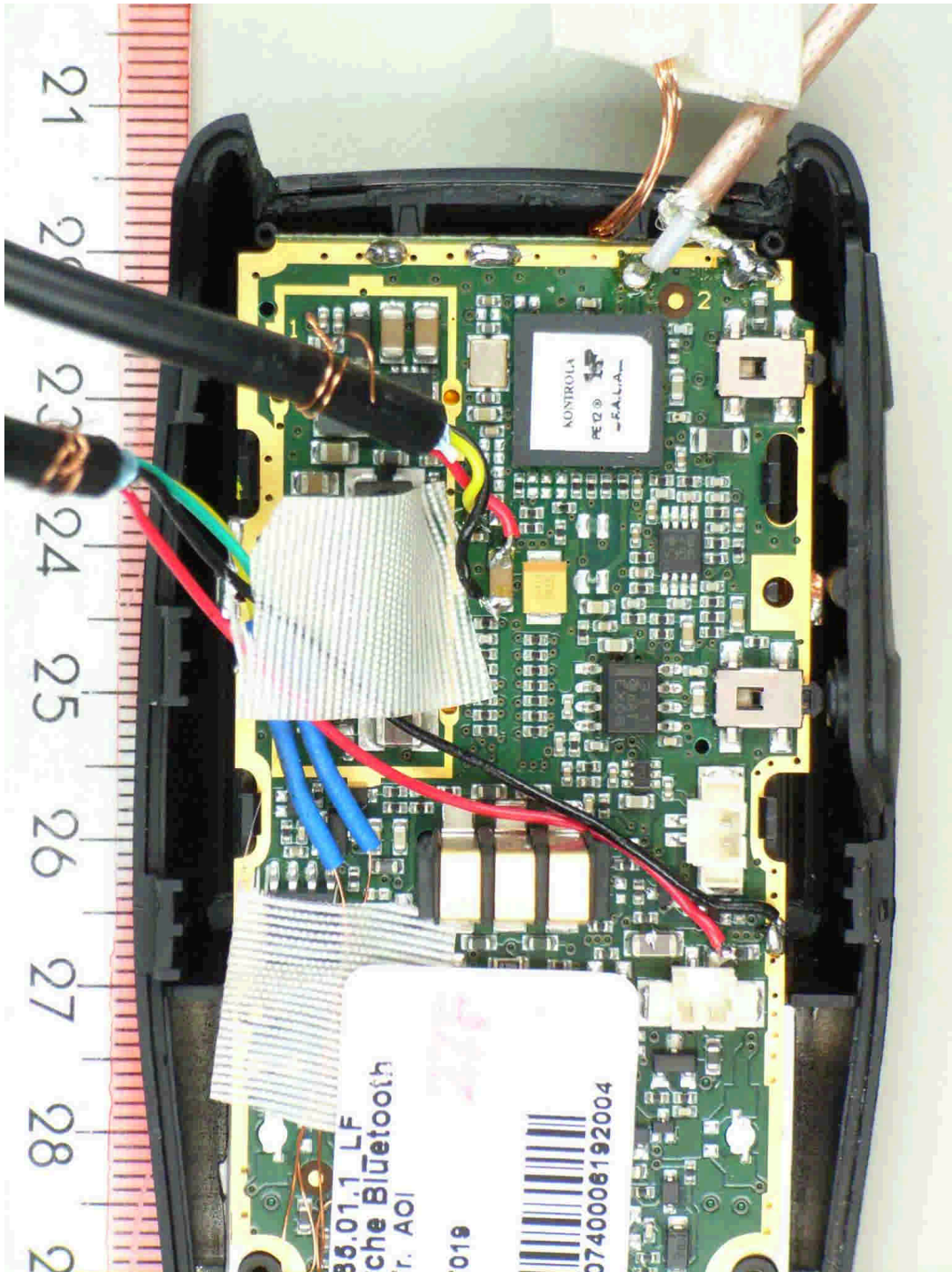
Annex B of test report R72337_B second version
EUT: Porsche Bluetooth Bedienthörer
Manufacturer: Bury GmbH & Co. KG



72337_a.jpg

EUT, PCB, bottom view, display moved

Annex B of test report R72337_B second version
EUT: Porsche Bluetooth Bedienthörer
Manufacturer: Bury GmbH & Co. KG



72337_i.jpg

EUT, detail view to sample with temporary antenna connector and external power supply