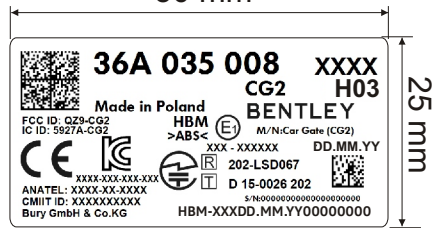
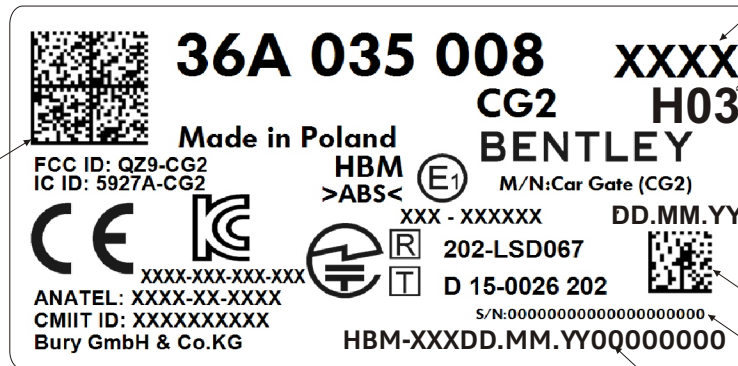


# Scale 1:1

50 mm



# Scale 2:1



Software version

Hardware version

Code DataMatrix  
(contains BURY serial number)

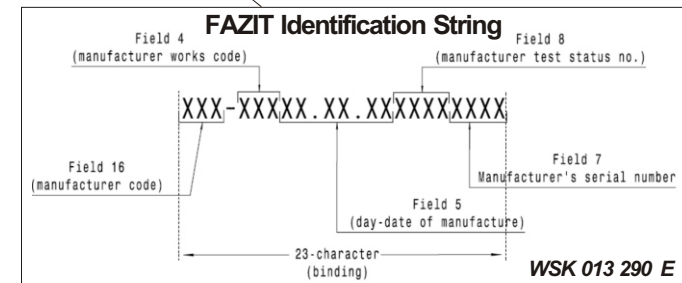
BURY serial number

Slave control units			
Number of characters		Description	Example
1	Z	DMC -Version = "3"	3 (fixed Value)
1	#	Separator	#
14	VVVHUUEEEEXXFF	part number (last 3 characters = FAKOM)	9P1919653B
1	#	Separator	#
9	HVVVSVVVV	HardwareVersionSoftwareVersion	H003SX100
1	#	Separator	#
9	DDDDDDDD	DUNS-Nummer	812760509
1	#	Separator	#
6	TTMMJJ	Date of manufacture	261113
1	*	Separator	*
3	BGR	Assembly number	E30
20	SSSSSSSSSSSSSSSSSS	Serial Number	00000000000000000000
1	*	Separator	*
1	=	sign of end	=
69			

Note: The 69-character requirement is binding; fill out with blanks as necessary.

Table 1

WSK 013 290 E - Field 17



Datamatrix code type ECC200

Printer: Thermotransfer printer with a resolution of 300 dpi

Material for label: White polyester

Colour of lettering: jet black

Test acc. to TL 52038.

Change/valid/ from/	Bez.x St.	Name	Signature/ Date	General tolerances.	Material: White polyester	Part Mass [g]
Worked out by	Date	Name	Signature	Scale	Label for Control unit	
Standards					36A 035 008	
Verified by					Drawing number	Blatt Nr.
Technology					7_1340_04	1/1
Approved by				Date	Issue	Printed
					04	

## External photos of the EUT

Photo 1: EUT front view



Photo 2: EUT back view

