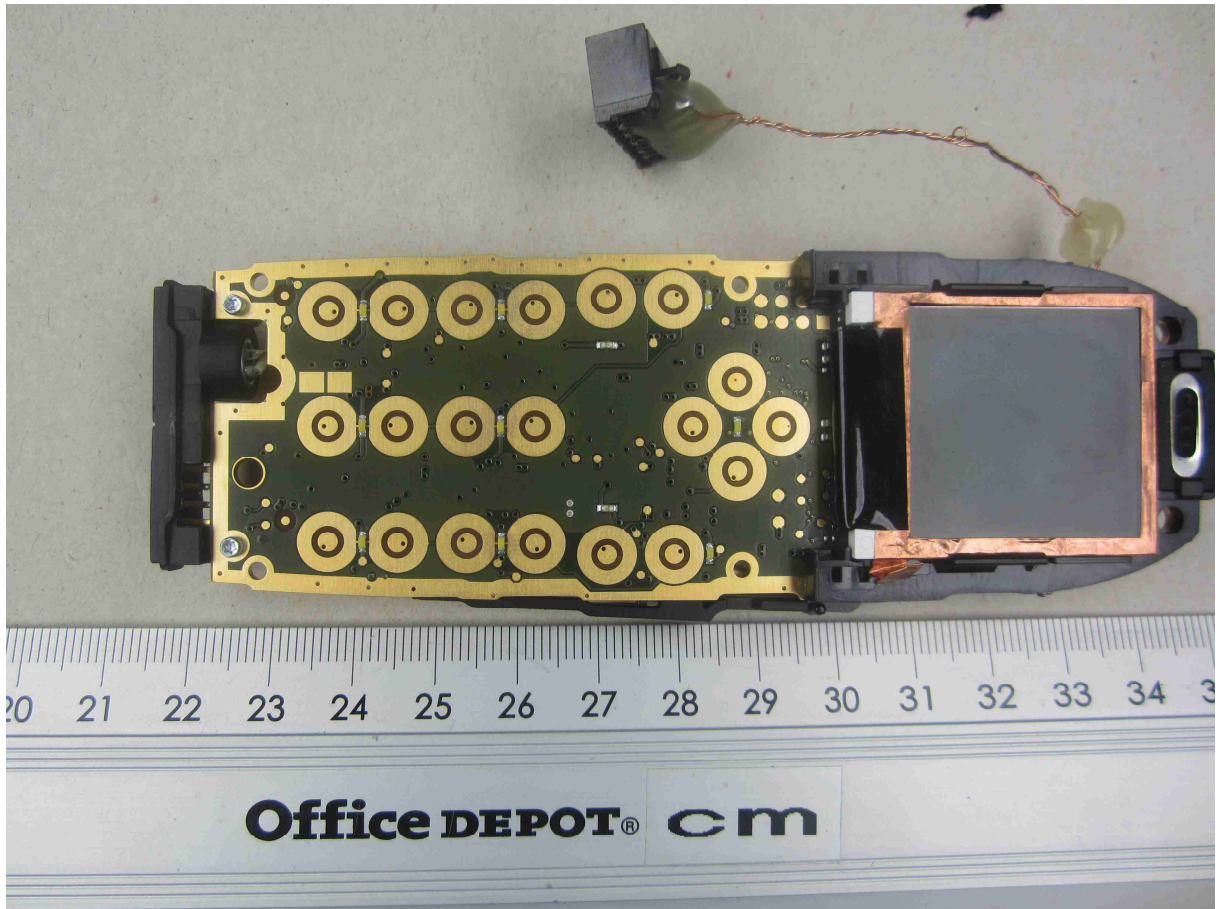


ANNEX C: INTERNAL PHOTOGRAPHS



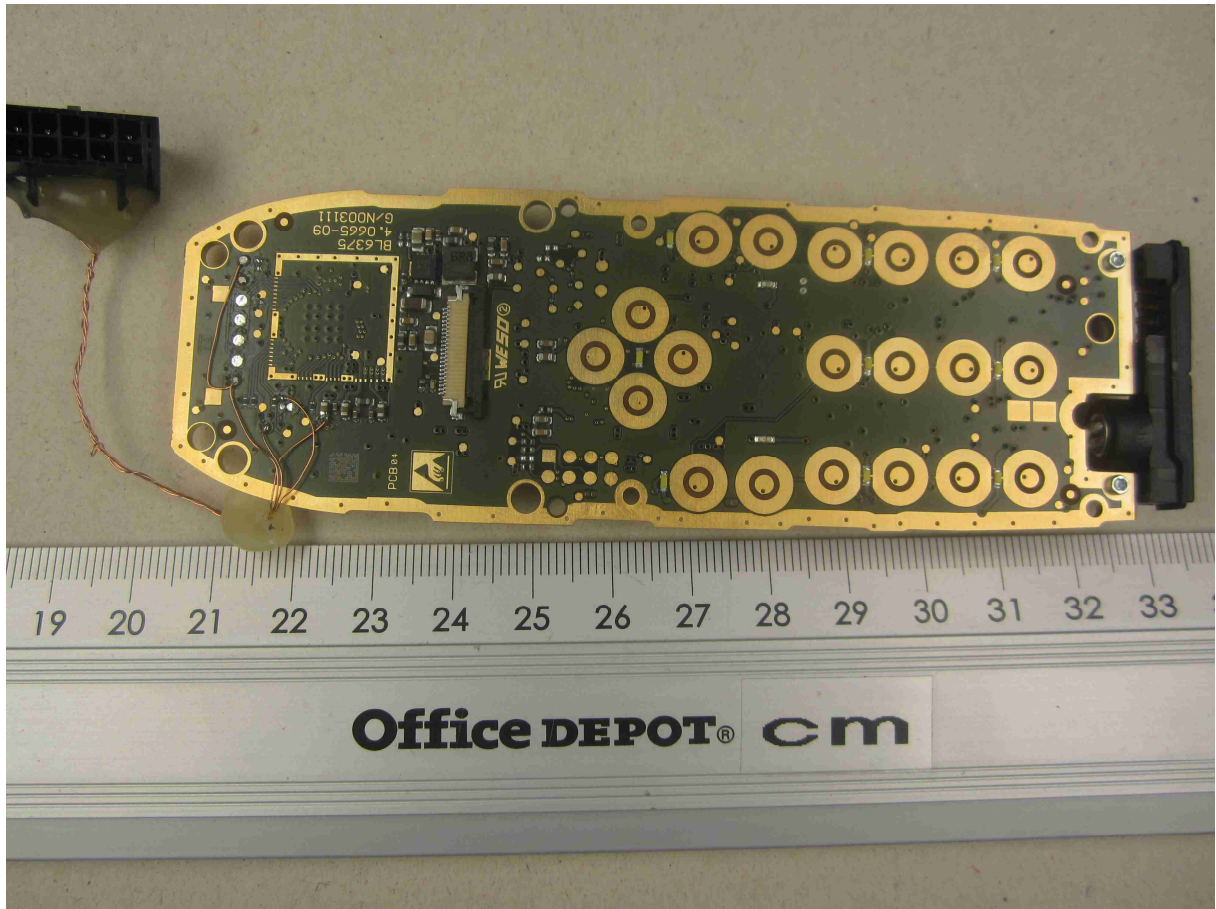
122097_23.JPG: EUT – handset, internal top view*¹

ANNEX C: INTERNAL PHOTOGRAPHS



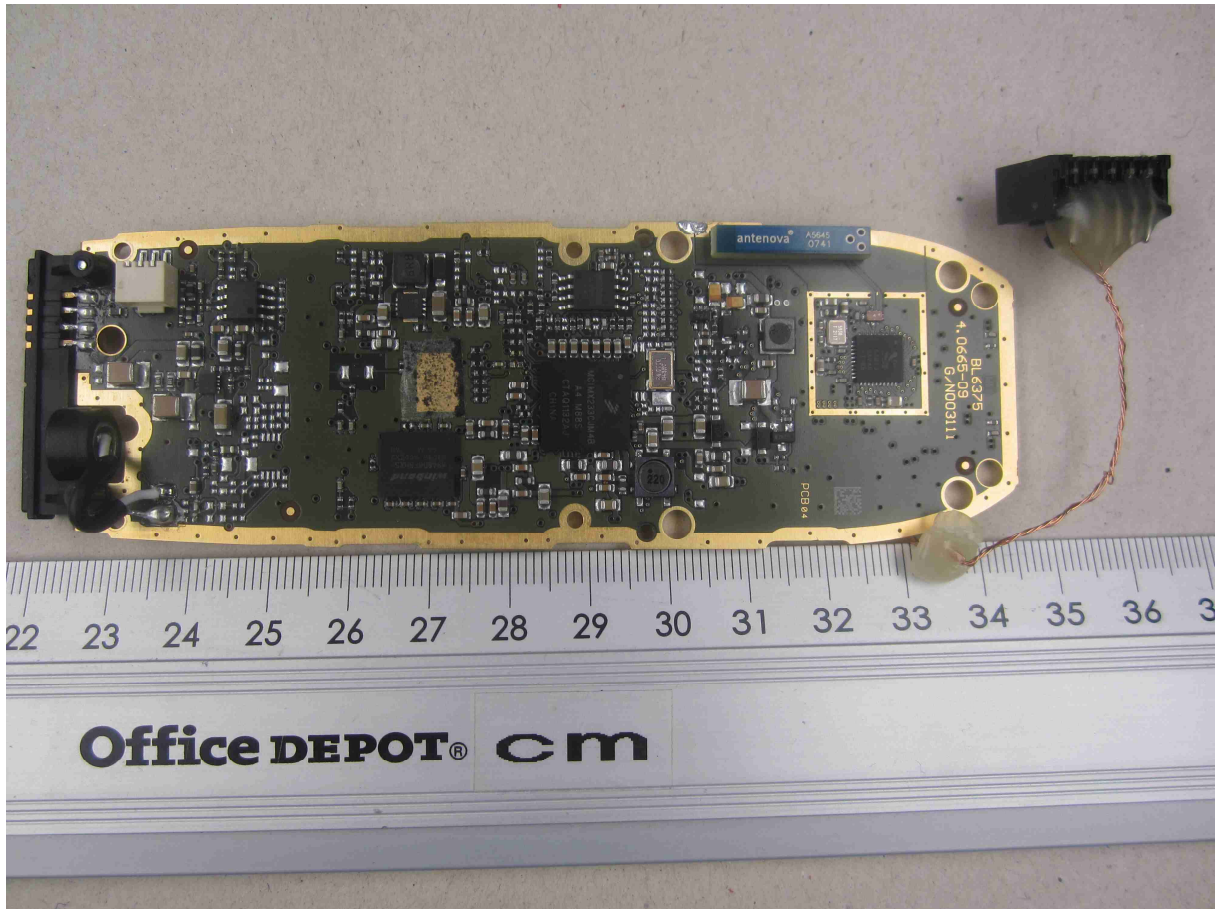
122097_25.JPG: EUT – handset, internal bottom view*¹

ANNEX C: INTERNAL PHOTOGRAPHS



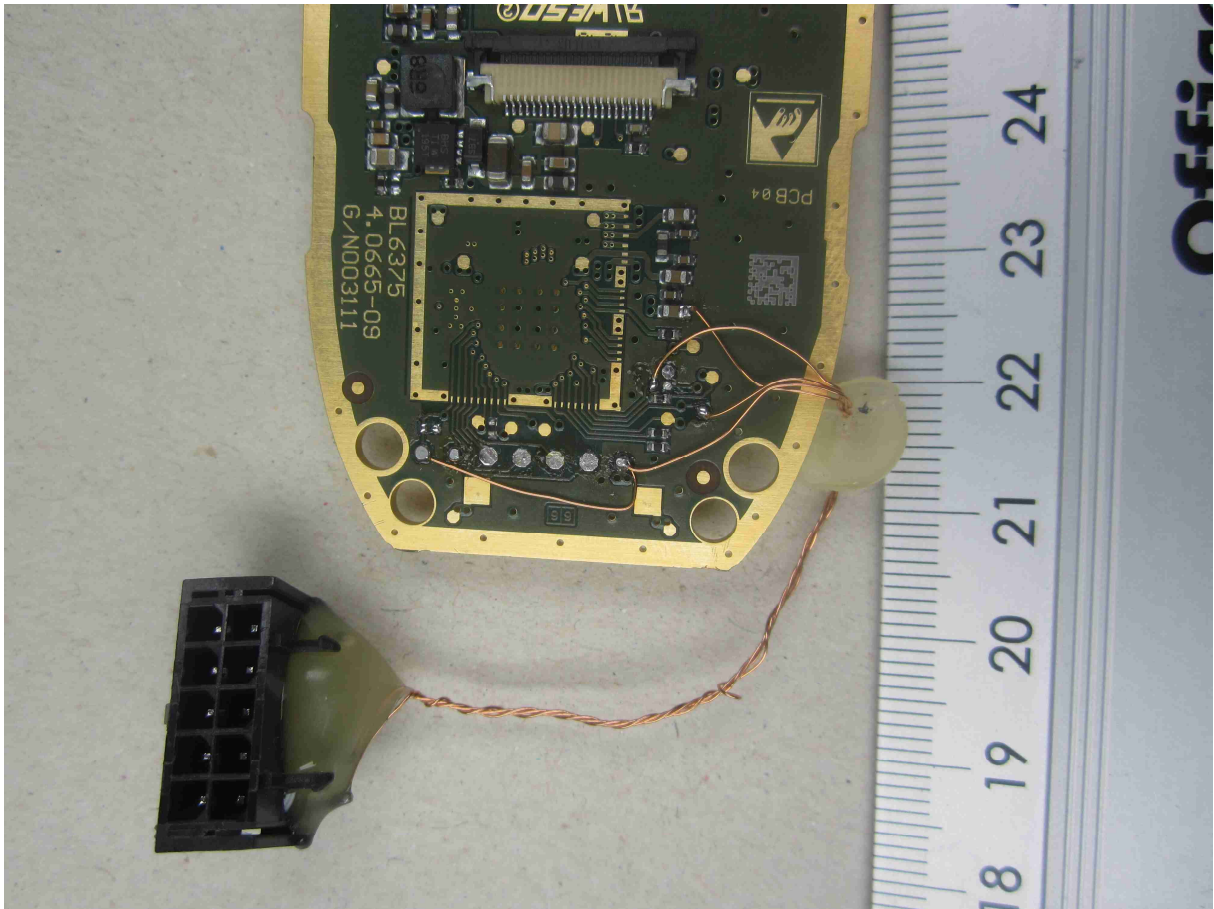
122097_32.JPG: EUT – handset, PCB top view*¹

ANNEX C: INTERNAL PHOTOGRAPHS



122097_31.JPG: EUT – handset, PCB bottom view*¹

ANNEX C: INTERNAL PHOTOGRAPHS



122097_33.JPG: EUT – handset, closeup to temporary UART connection*¹

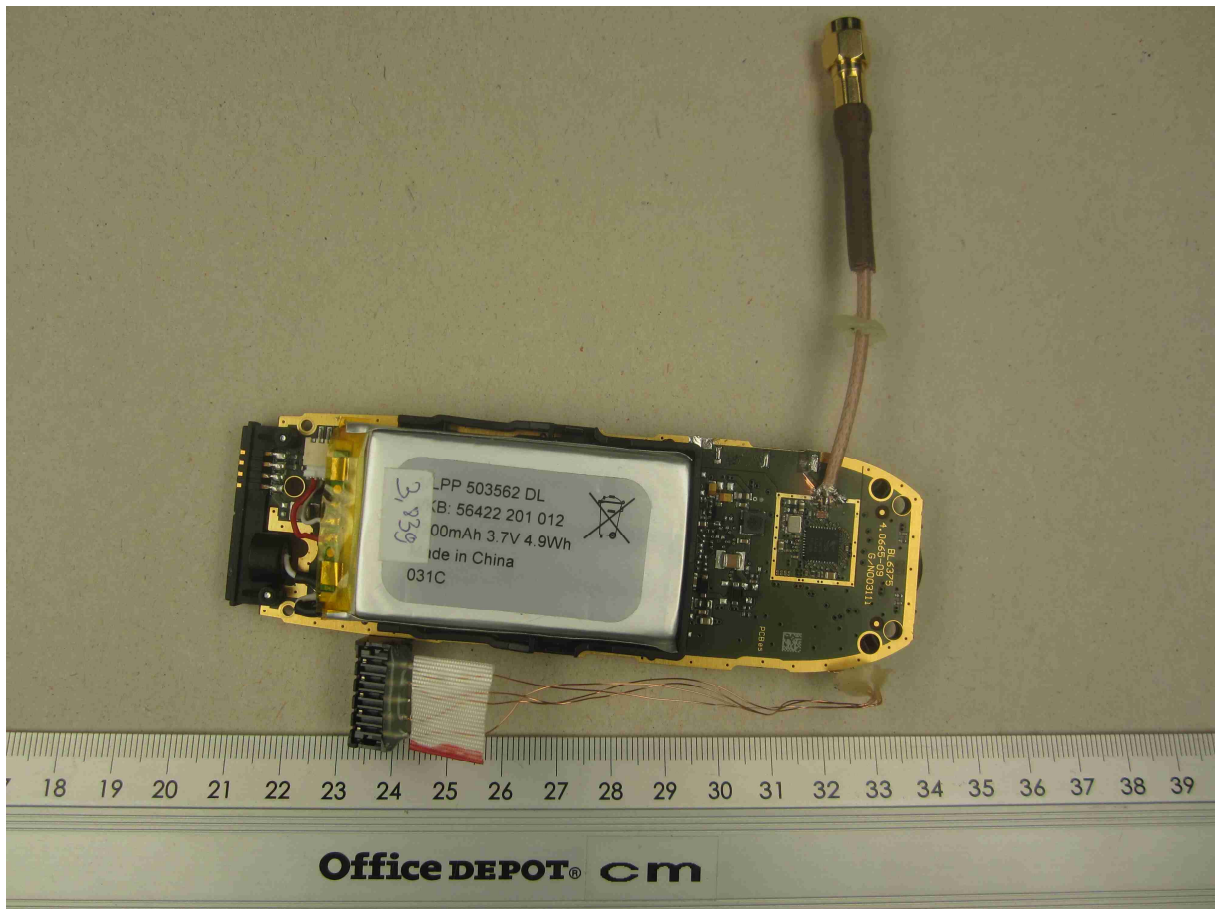
The EUTs shown in the photographs marked by *¹ were modified with a temporary UART interface for test purposes.

ANNEX C: INTERNAL PHOTOGRAPHS



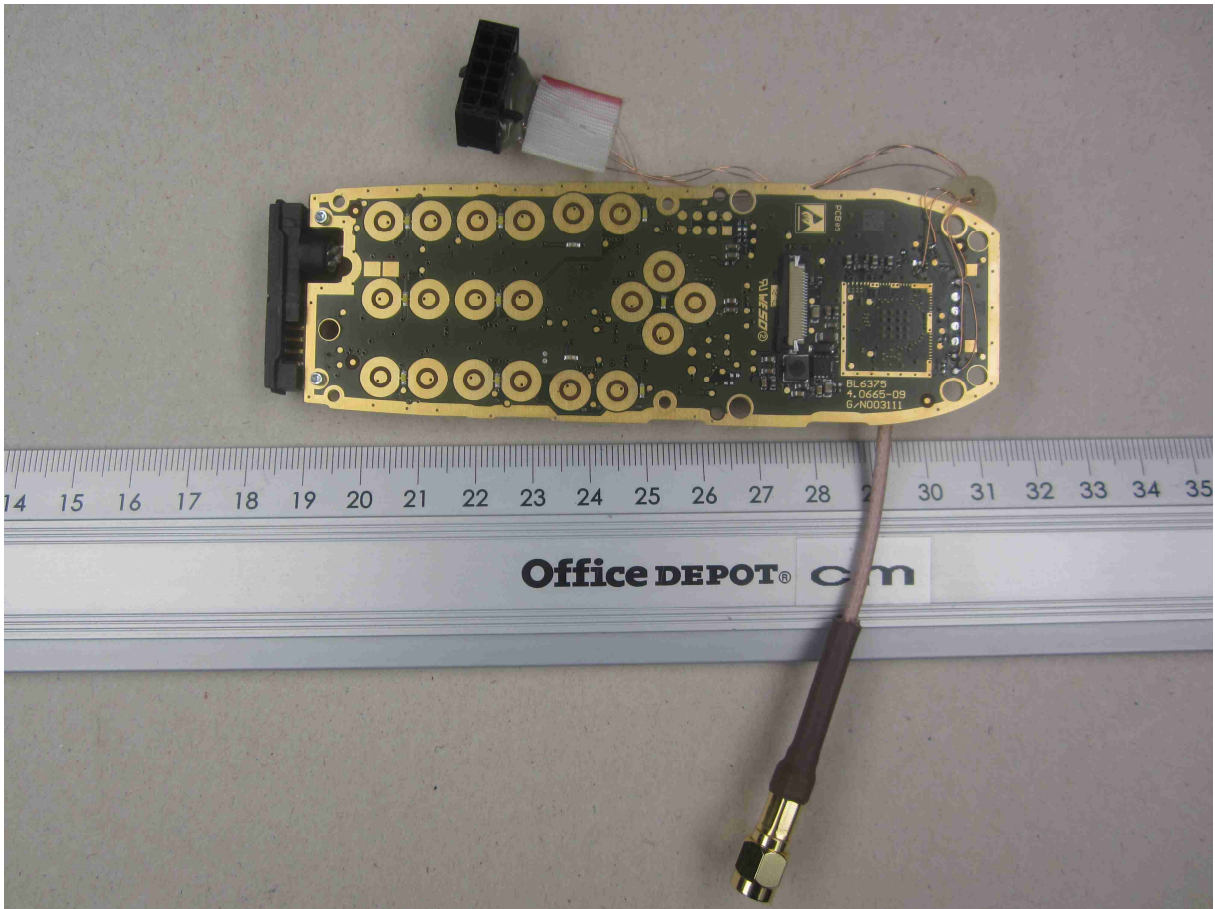
122097_41.JPG: EUT – handset, with temporary antenna connector, internal top view*²

ANNEX C: INTERNAL PHOTOGRAPHS



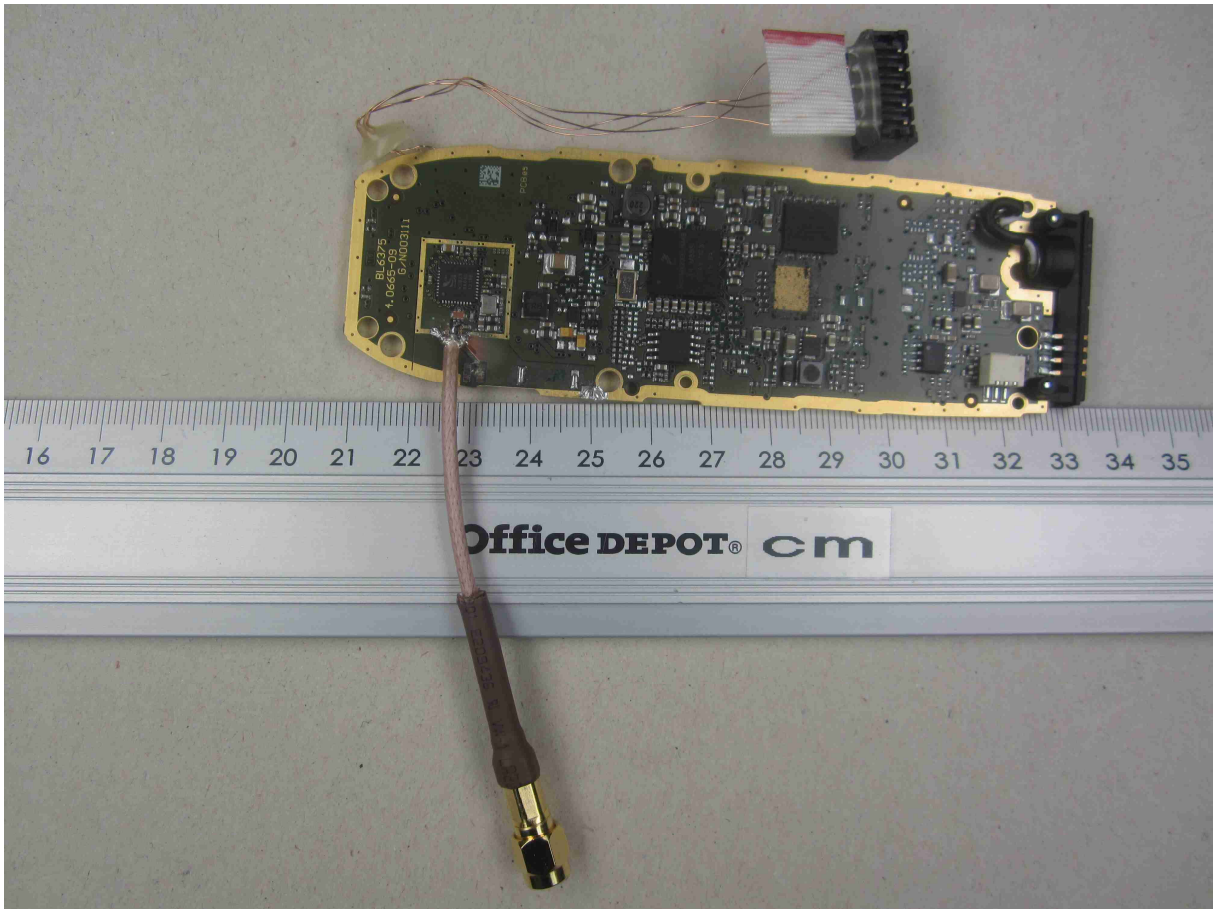
122097_40.JPG: EUT – handset, with temporary antenna connector, internal bottom view*2

ANNEX C: INTERNAL PHOTOGRAPHS



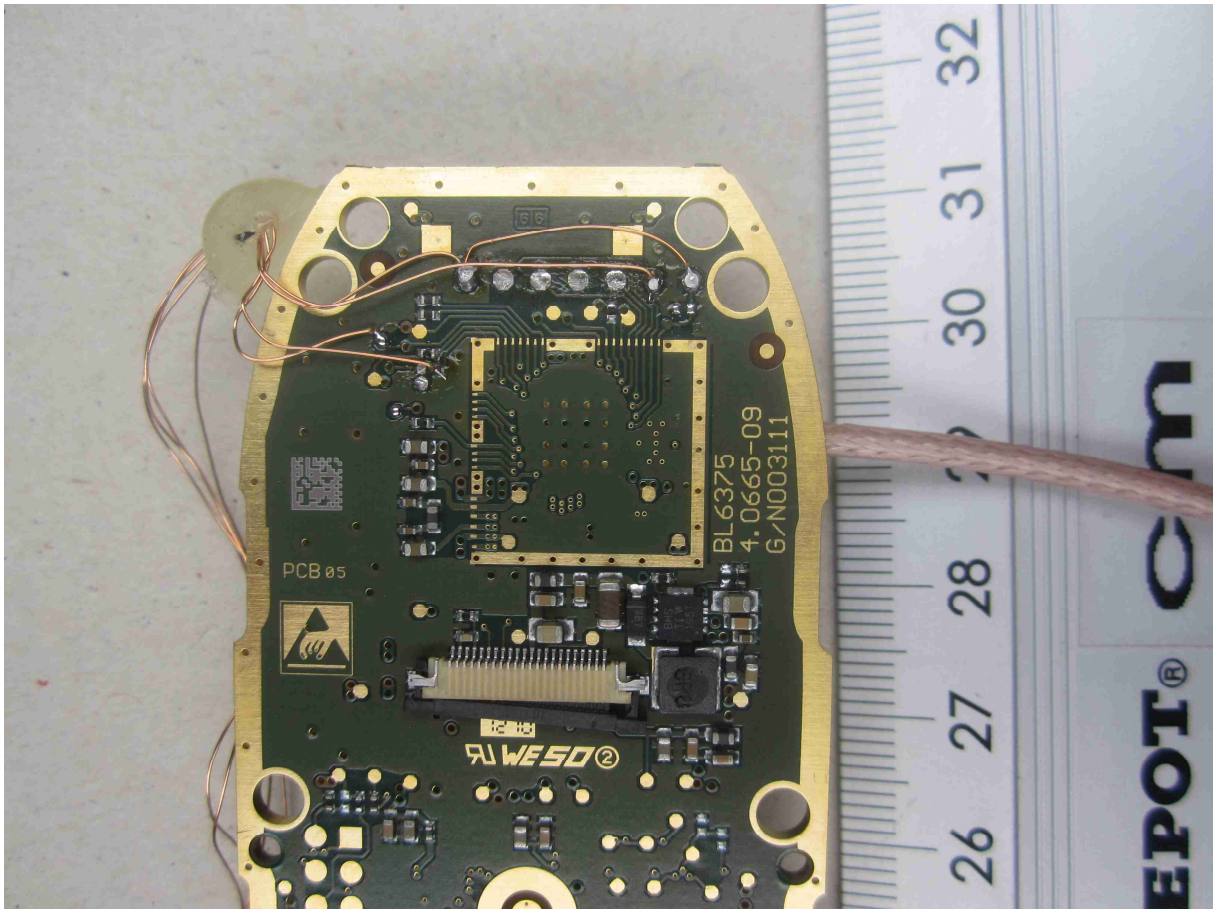
122097_47.JPG: EUT – handset, with temporary antenna connector, PCB top view*2

ANNEX C: INTERNAL PHOTOGRAPHS



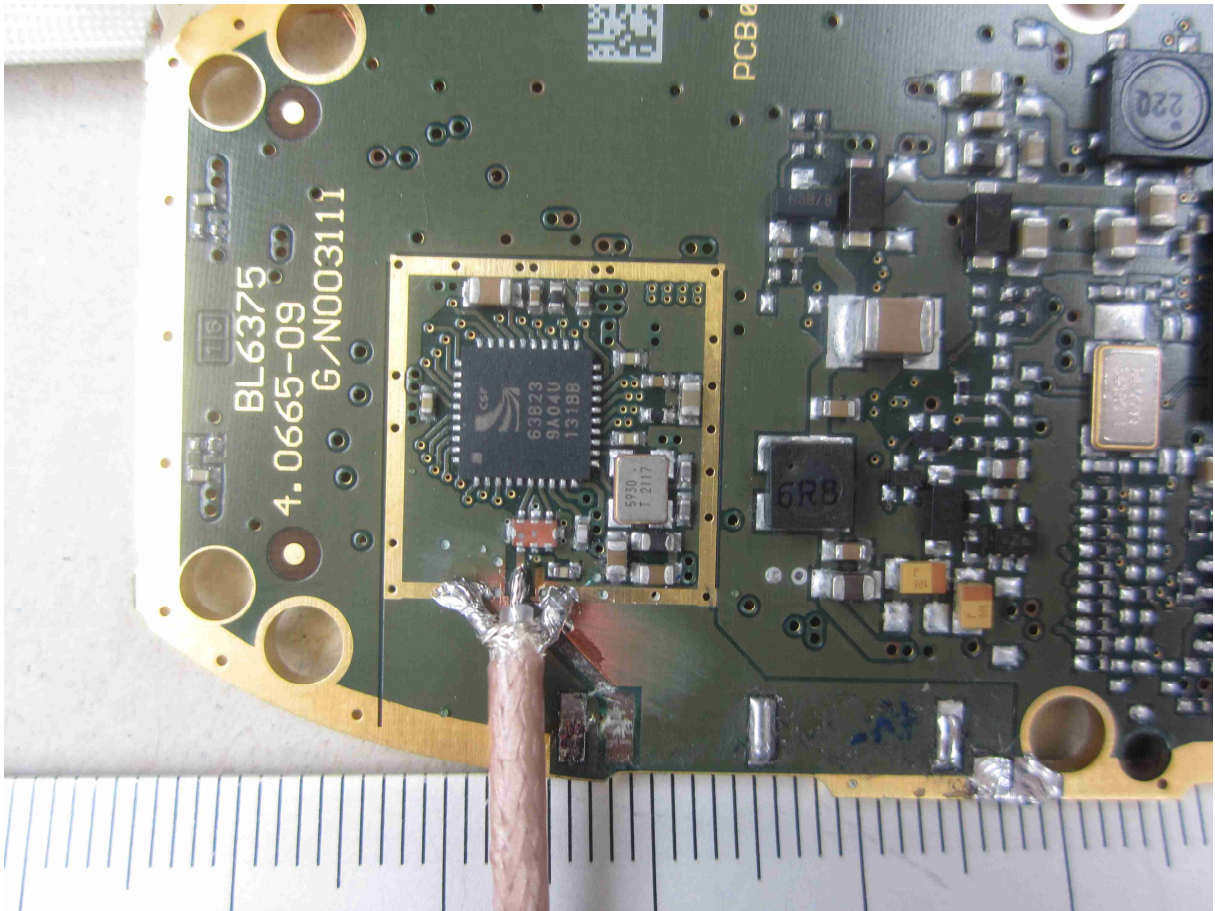
122097_46.JPG: EUT – handset, with temporary antenna connector, PCB bottom view*2

ANNEX C: INTERNAL PHOTOGRAPHS



122097_48.JPG: EUT – handset with temporary antenna connector, closeup to temporary UART connection*2

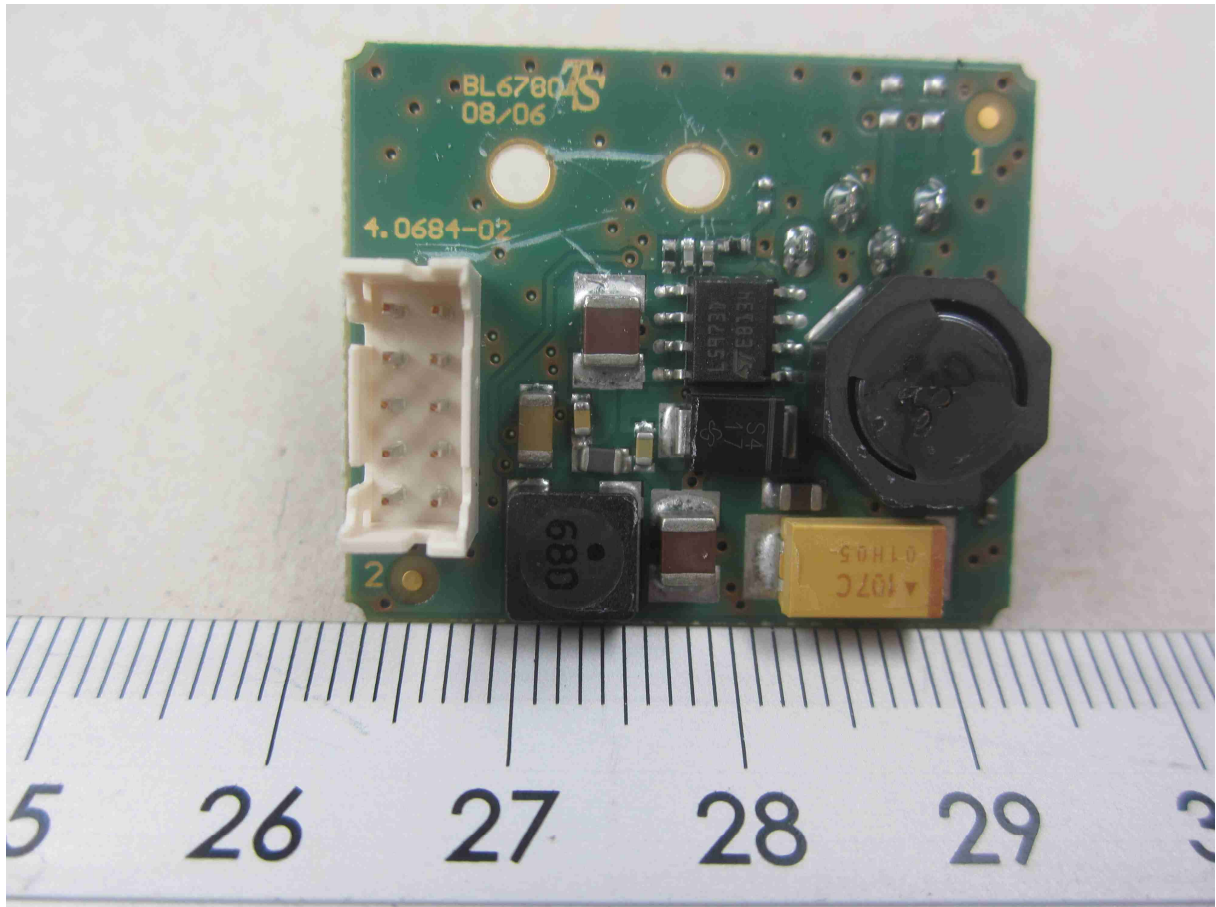
ANNEX C: INTERNAL PHOTOGRAPHS



122097_50.JPG: EUT – handset, with temporary antenna connector, closeup to temporary antenna connector*²

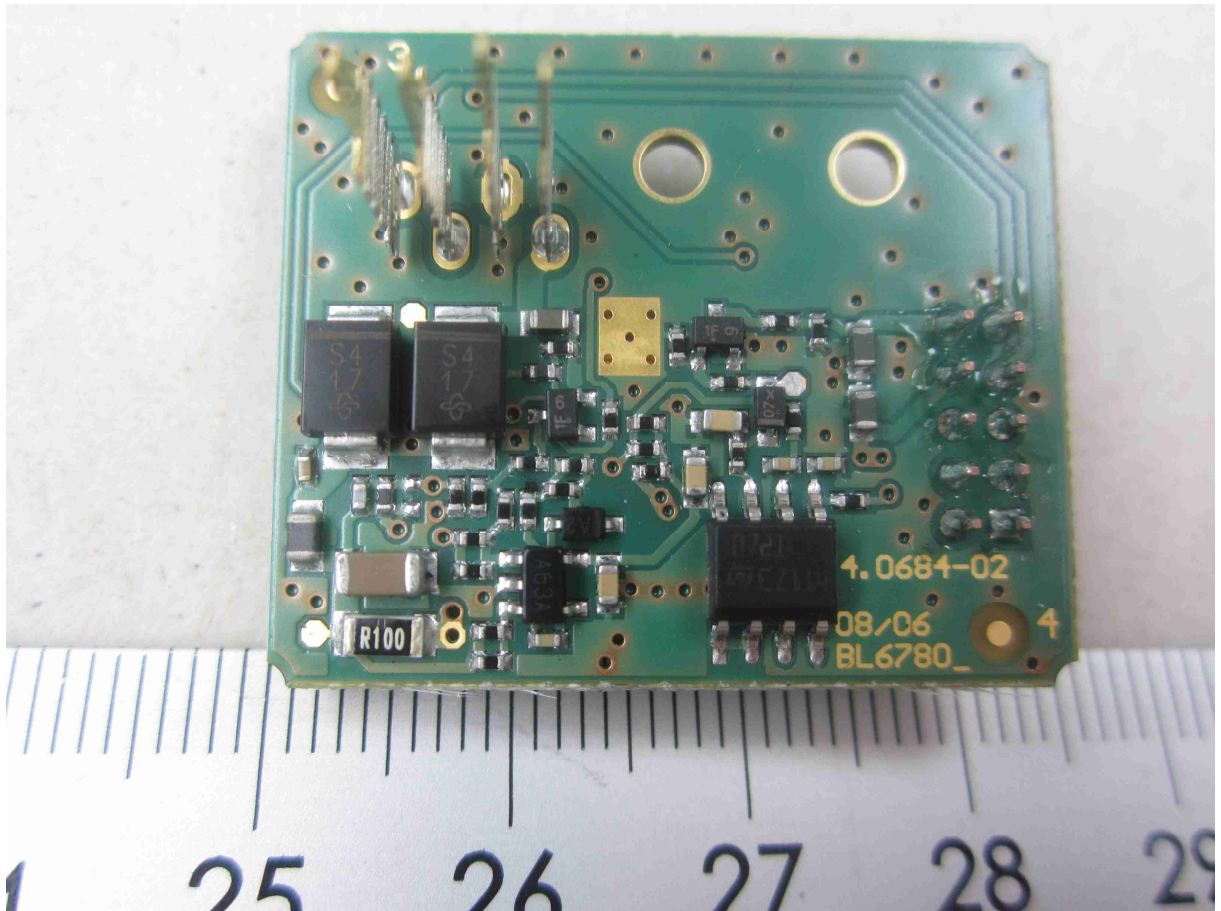
The EUTs shown in the photographs marked by *² were modified with a temporary UART interface and antenna connector for test purposes.

ANNEX C: INTERNAL PHOTOGRAPHS



122097_36.JPG: EUT – cradle, charging circuit, PCB top view

ANNEX C: INTERNAL PHOTOGRAPHS



122097_39.JPG: EUT – cradle, charging circuit, PCB bottom view