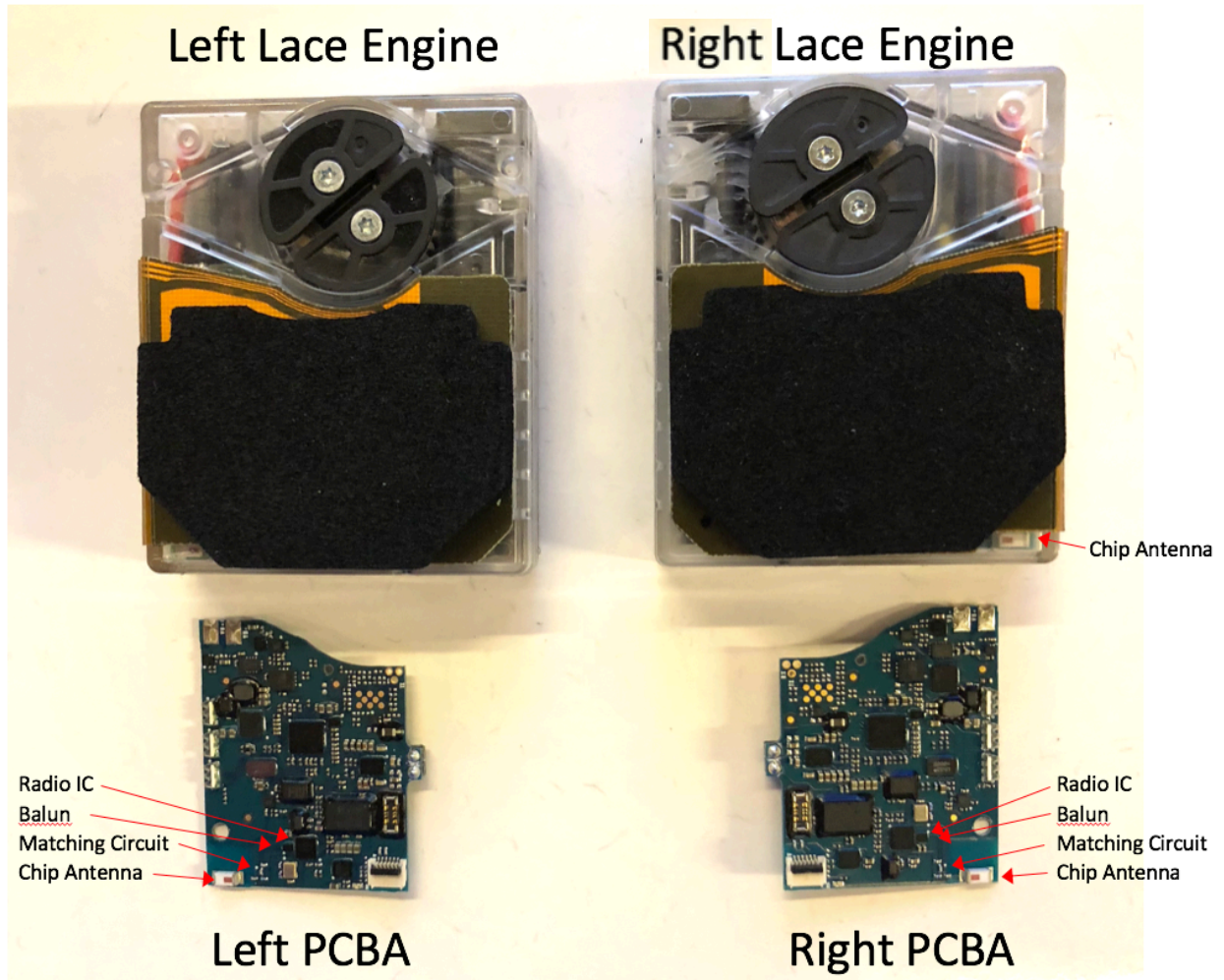


FCC ID: QYU-ADAPTBB  
IC: 4571A-ADAPTBB

## Internal photos

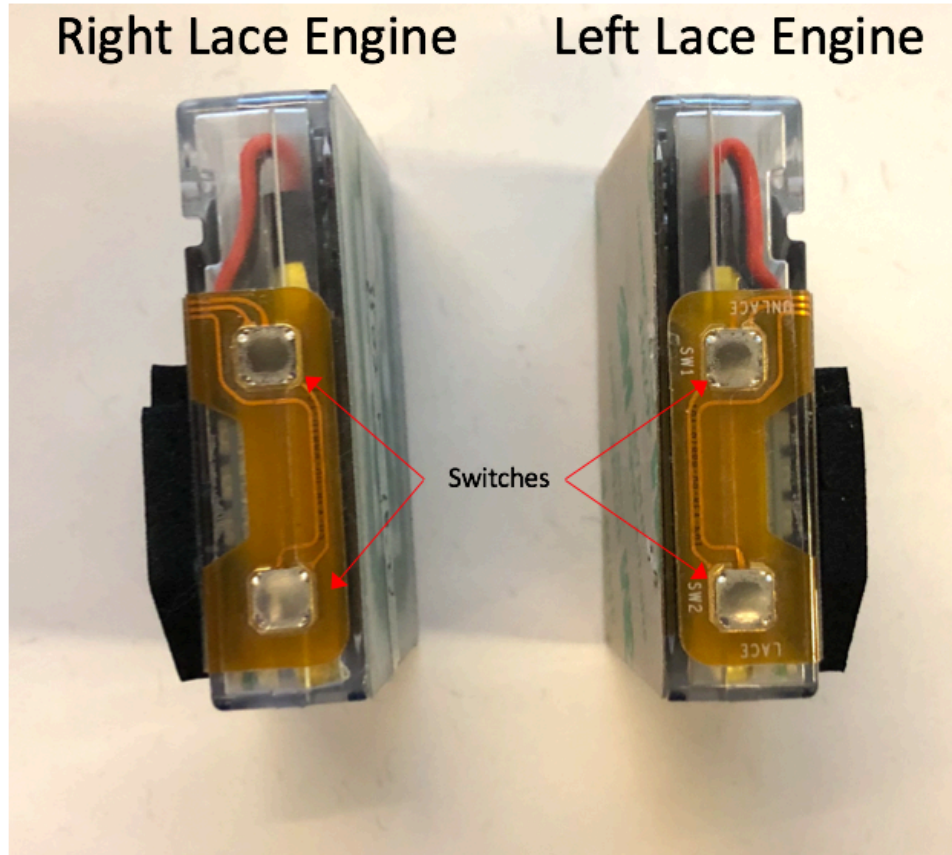
See pictures below for the Lace Engine assemblies fully contained by the shoe. There is a separate but similar Left and Right assembly, each with a PCBA. There are two buttons on the lateral edge of each Lace Engine, accessible by the user though external buttons (seen in the "Lateral side" external photo).



# Lateral Side View

## Right Lace Engine

## Left Lace Engine



# Bottom View



## Left Lace Engine

## Right Lace Engine

Wireless Recharge Coil

# "Toe" pointing Side View

Chip Antenna

Battery



## Right Lace Engine

Motor



## Left Lace Engine

Chip Antenna

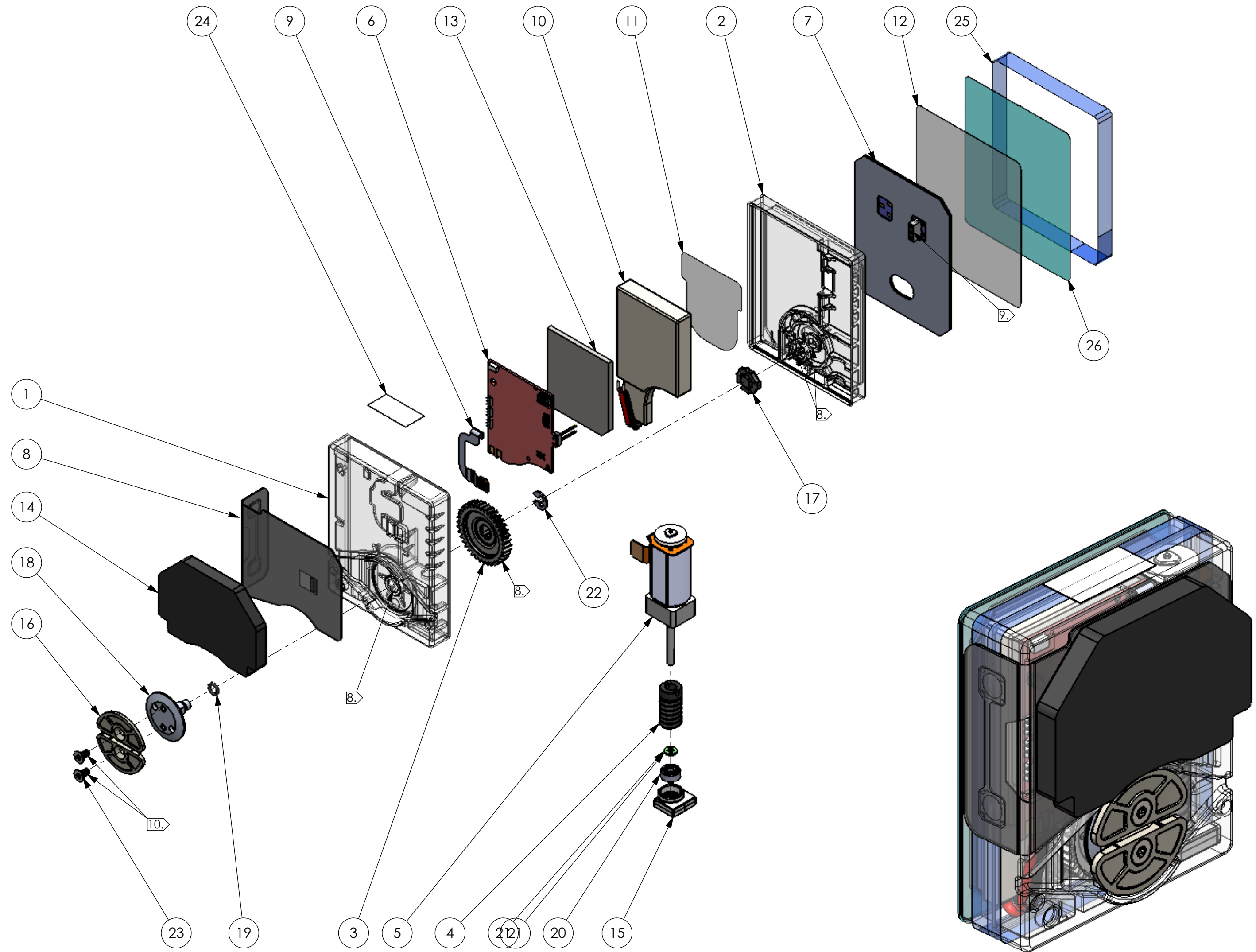
Battery

NOTES: (UNLESS OTHERWISE SPECIFIED)

- THIS DRAWING IS TO BE USED IN CONJUNCTION WITH THE ELECTRONIC DATA FILE OF THE SAME NAME. FEATURE TO FEATURE DIMENSIONS NOT EXPLICITLY CALLED OUT ON THE DRAWING ARE TO BE REFERENCED TO THE 3D DATABASE WITH RESPECT TO THE BLOCK TOLERANCE.
- SHIPPING BOX AND/OR CONTAINER TO BE CLEARLY MARKED OR LABELED WITH PART #, REV #, PRODUCTION DATE, AND QUANTITY OF PARTS ENCLOSED.
- ALL MANUFACTURING METHODS AND MATERIALS MUST COMPLY WITH THE CUSTOMER RESTRICTED SUBSTANCE LIST (RSL).
- QUALITY DIMENSIONS ARE INDICATED BY A [CTF] AND ARE TO BE MEASURED ACCORDING TO THE QUALITY PLAN.
- PROCESS DIMENSIONS ARE INDICATED BY A [CTP] AND ARE TO BE MEASURED ACCORDING TO THE QUALITY PLAN.
- ALL DIMENSIONS SHOWN ON THE DRAWING ARE TO BE NUMBERED AND INCLUDED IN THE FIRST ARTICLE INSPECTION (FAI) REPORT ACCORDING TO THE QUALITY PLAN.
- ANY CHANGE TO PRODUCTION TOOLING OR MATERIAL MUST BE APPROVED BY CUSTOMER.
- GREASE TYPE (MULTIPLE LOCATIONS) : NYE RHEOLUBE 362HB
- RX COIL HEADER DIELECTRIC GREASE: NYE NYOGEL 760G
- THREADLOCKER: LOCTITE 263
- ASSEMBLE PER 901-02120-00.
- ASSEMBLY OF SEALS AND ALL SURFACES IN CONTACT WITH PSA TO BE TO BE CONTROLLED THROUGH PRESSURE, TIME, TEMPERATURE SETTINGS PER ASSEMBLY INSTRUCTIONS.

REVISIONS		
REV.	ZONE	DESCRIPTION

REFERENCE DESIGNATOR	DESCRIPTION (FOR REFERENCE ONLY)	QTY.
1	HOUSING, BASE, PROCESS, LEFT	1
2	HOUSING, COVER, PROCESS, LEFT	1
3	WORM GEAR, MACHINED, SHORT	1
4	WORM, HE, PEEK 150CA30	1
5	ASSY, GEAR MOTOR, CAP POSITION, LEFT	1
6	PCBA, ENGINE, LEFT, MECH LAYOUT	1
7	RX COIL, LEFT, THICK	1
8	FPCA, MEMBRANE, LEFT, ALT F	1
9	PASSTHRU, FPCA, LEFT	1
10	BATTERY, UL3132	1
11	PSA, BATTERY, SYMMETRIC	1
12	PSA, LACE ENGINE, THICK, FULL	1
13	RETENTION FOAM, THICK	1
14	DIELECTRIC, SELF CAPACITIVE, CONDUCTIVE	1
15	BEARING SUPPORT, NO KNIT	1
16	SPOOL, HIGH GF	1
17	INDEX WHEEL, REINFORCED	1
18	SPOOL SHAFT, E-RING, FLAT END	1
19	O-RING, 0.8X2.7	1
20	BALL BEARING, 2X6X2.5, HIGH STRENGTH	1
21	FLAT WASHER, STAINLESS STEEL, THICK	1
22	E-RING, 3MM SHAFT	1
23	CAP SCREW, FLAT HEAD, TORX, M2X4	2
24	SERIAL NUMBER LABEL, LE	1
25	SEAL, PERIMETER, LAP JOINT	1
26	COVER, HONEYCOMB	1



**TOLERANCES UNLESS OTHERWISE SPECIFIED**

TWO PLACE DECIMAL (.XX) ±0.10  
 THREE PLACE DECIMAL (.XXX) ±0.05  
 ANGLE ONE PLACE DECIMAL (.X°) ±2°  
 ANGLE TWO PLACE DECIMAL (.XX°) ±0.5°

DIMENSIONS WITH (+) INDICATE WIDEST MEASUREMENT RELATIVE TO DRAFT  
 DIMENSIONS WITH (-) INDICATE NARROWEST MEASUREMENT RELATIVE TO DRAFT

ALL DIMENSIONS ARE IN MM  
 GEOMETRIC TOLERANCING PER ANSI Y14.5-1994  
 ALL PROJECTIONS ARE THIRD ANGLE

	NAME	DATE
DRAWN	JAK	10/31/2018
CHECKED	PVN	10/31/2018

**PROPRIETARY AND CONFIDENTIAL**  
 THIS DRAWING IS THE PROPERTY OF NIKE, INC. AND IS PROTECTED UNDER COPYRIGHT LAW AS AN UNPUBLISHED WORK.

IT MAY NOT BE PUBLISHED, COPIED OR REPRODUCED WITHOUT EXPRESS WRITTEN PERMISSION FROM NIKE



TITLE: **ASSY, LACE ENGINE, MP1, LEFT**

SIZE	DWG. NO.	REV
<b>C</b>	<b>101-02124-01</b>	<b>XX</b>

SCALE: 2:1  
 3D CAD FILE: 101-02124-01 REV XX.STEP  
 SHEET 1 OF 4

1 2 3 4 5 6 7 8

A

B

C

D

E

F

A

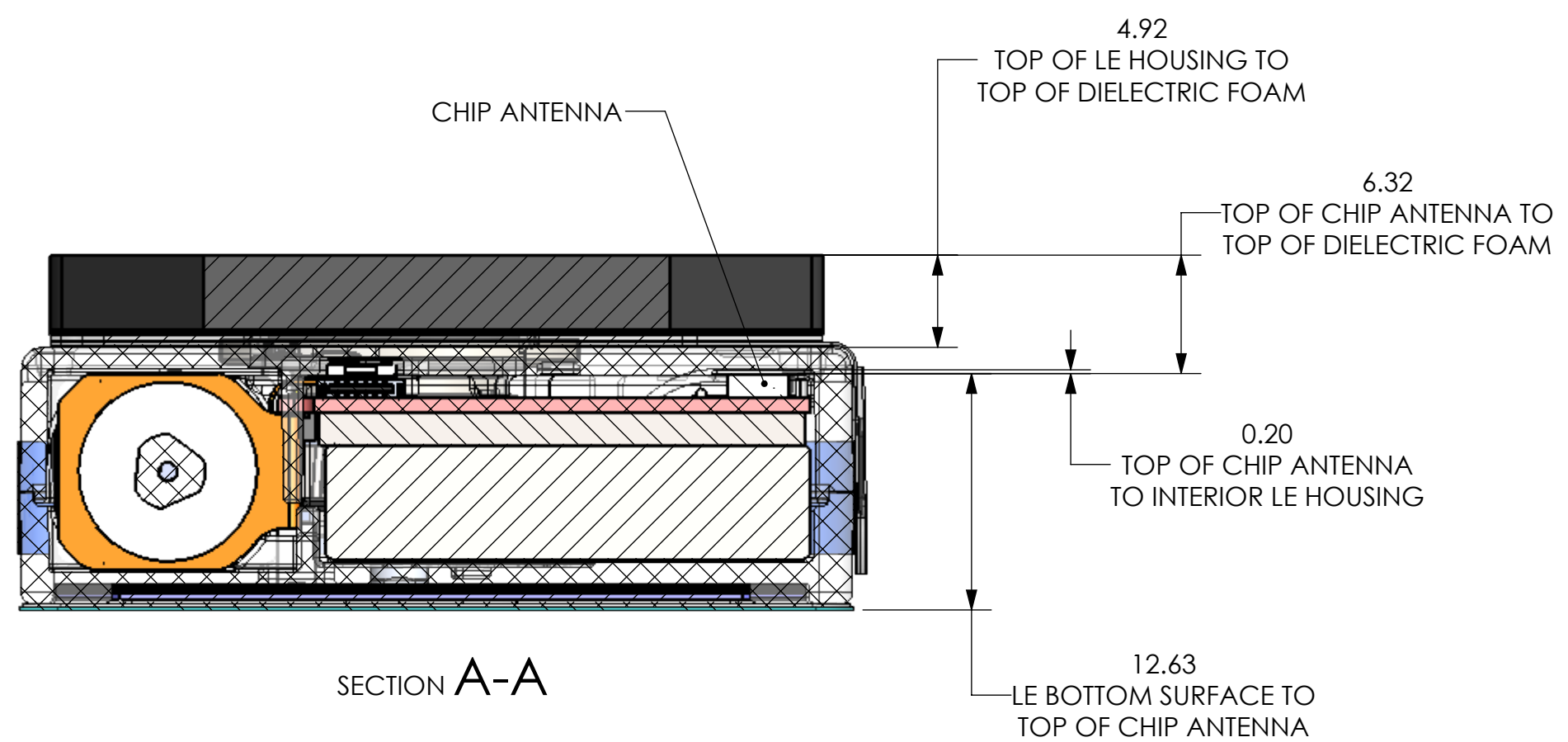
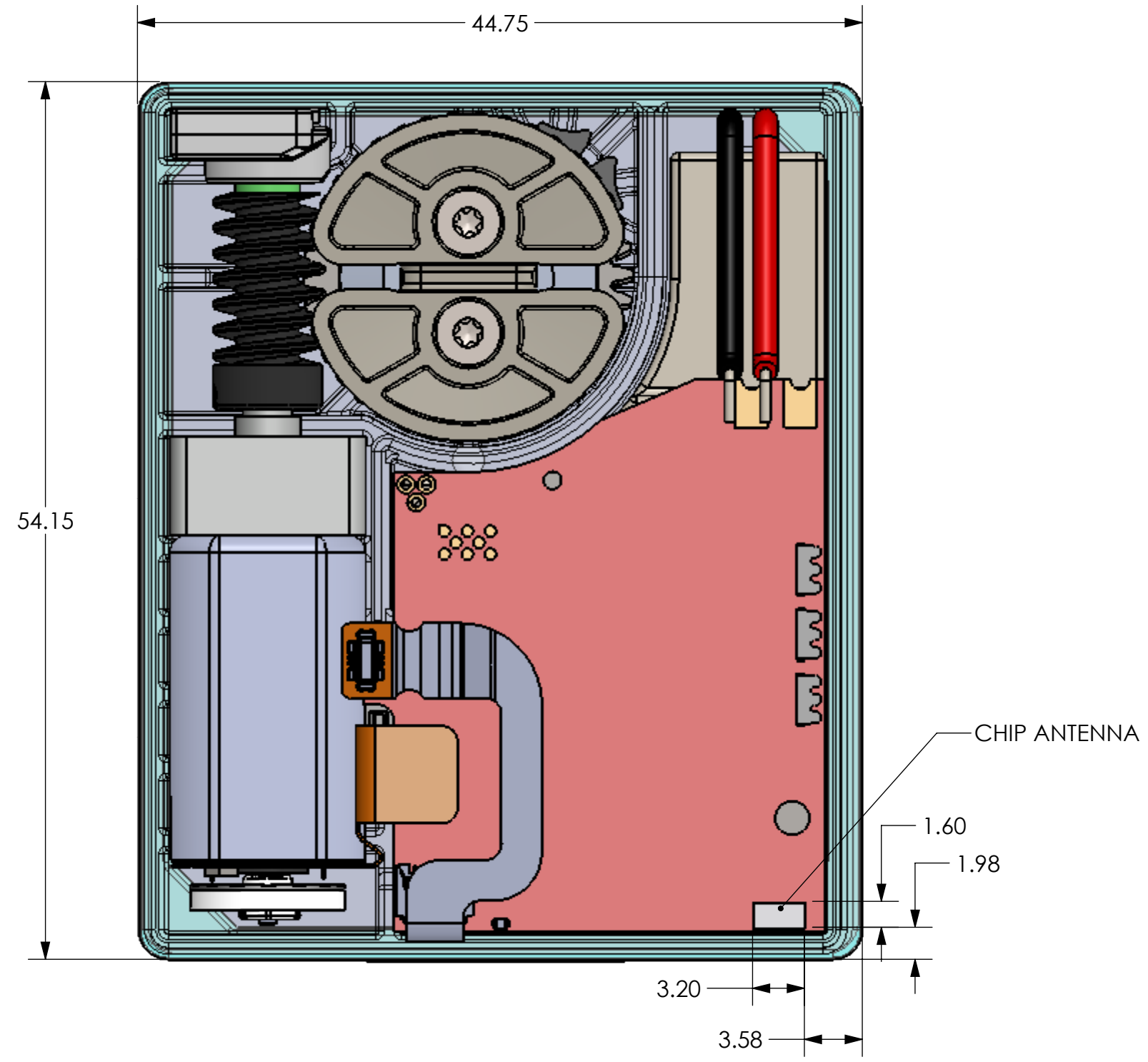
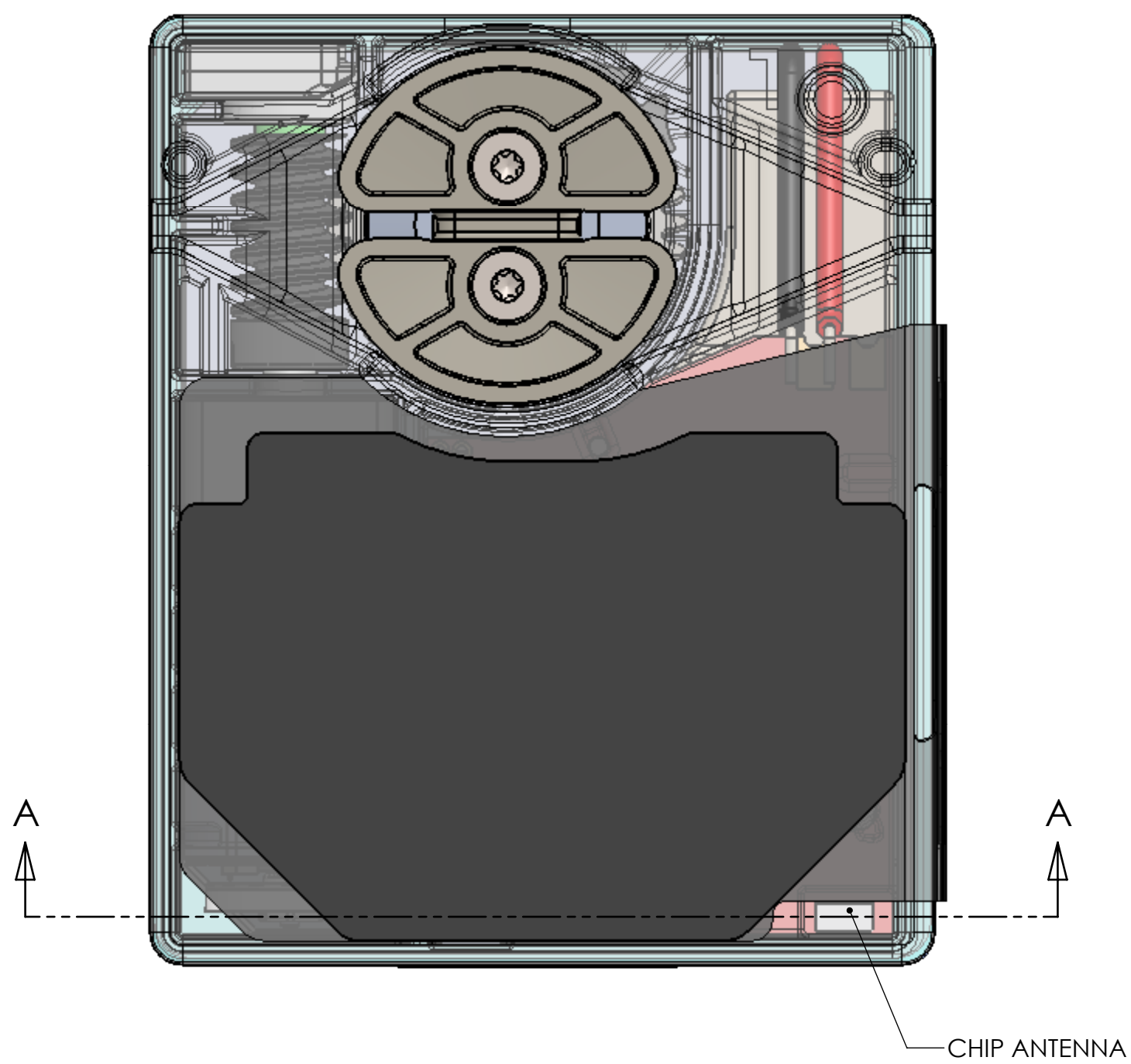
B

C

D

E

F

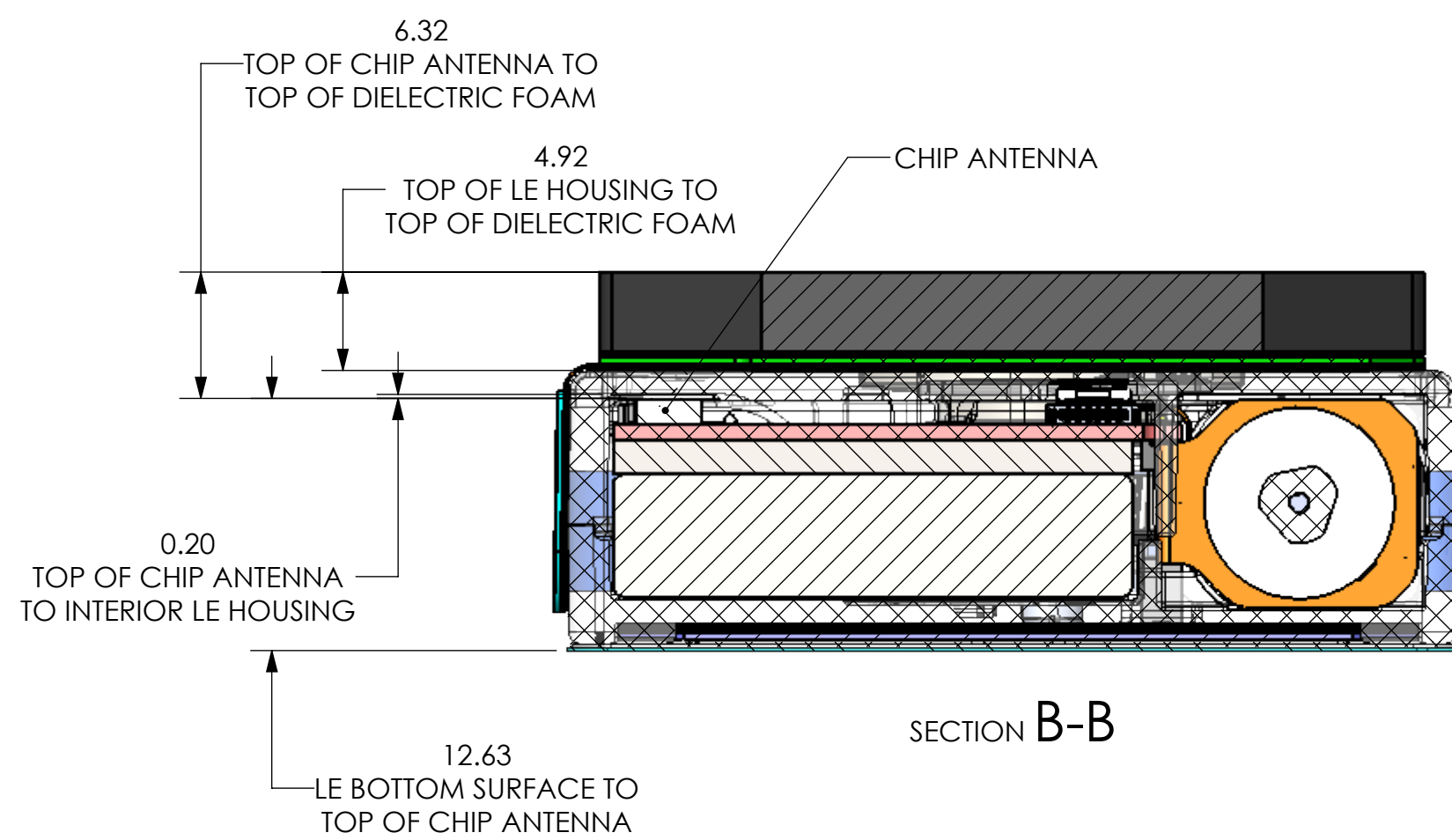
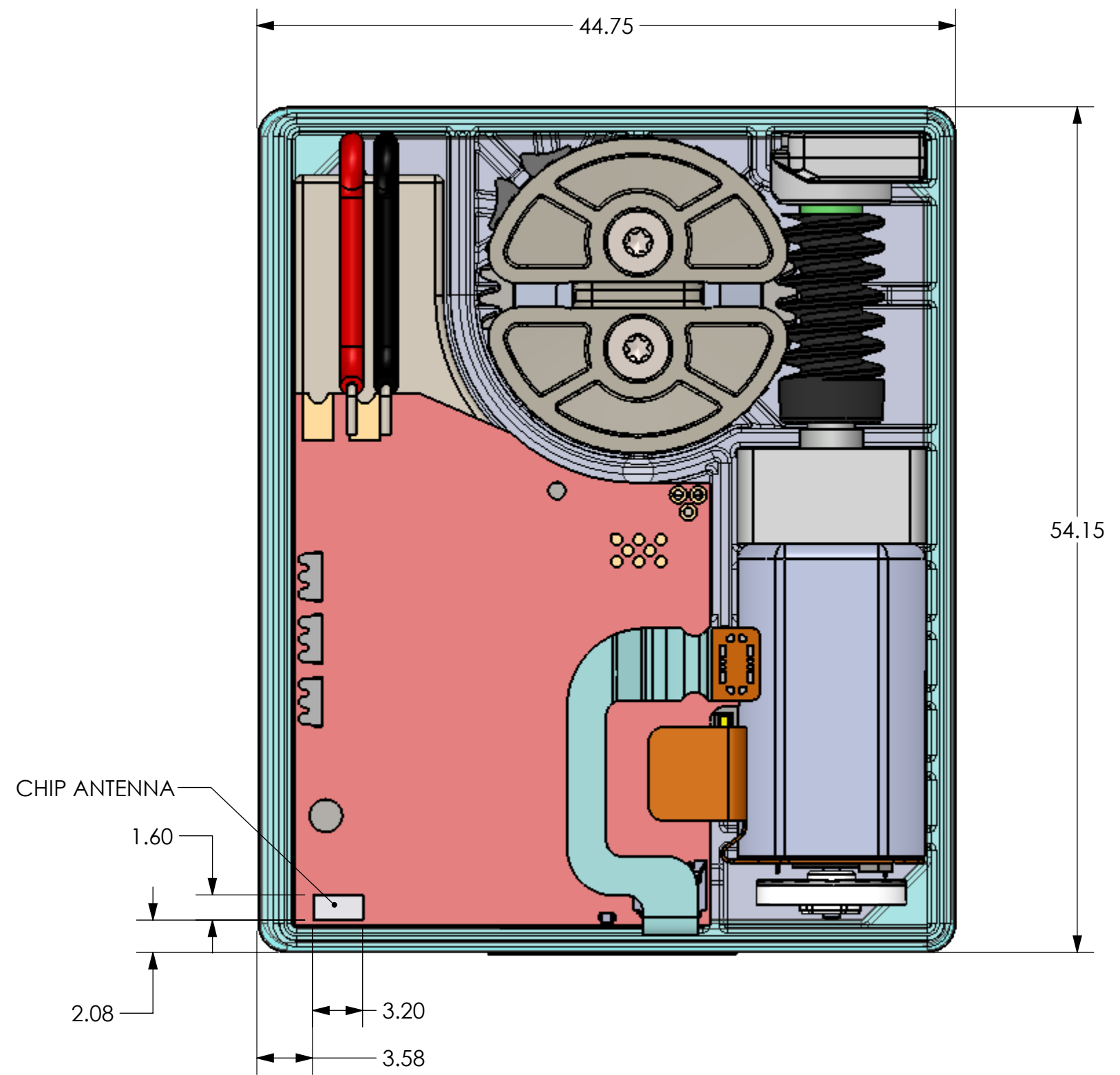
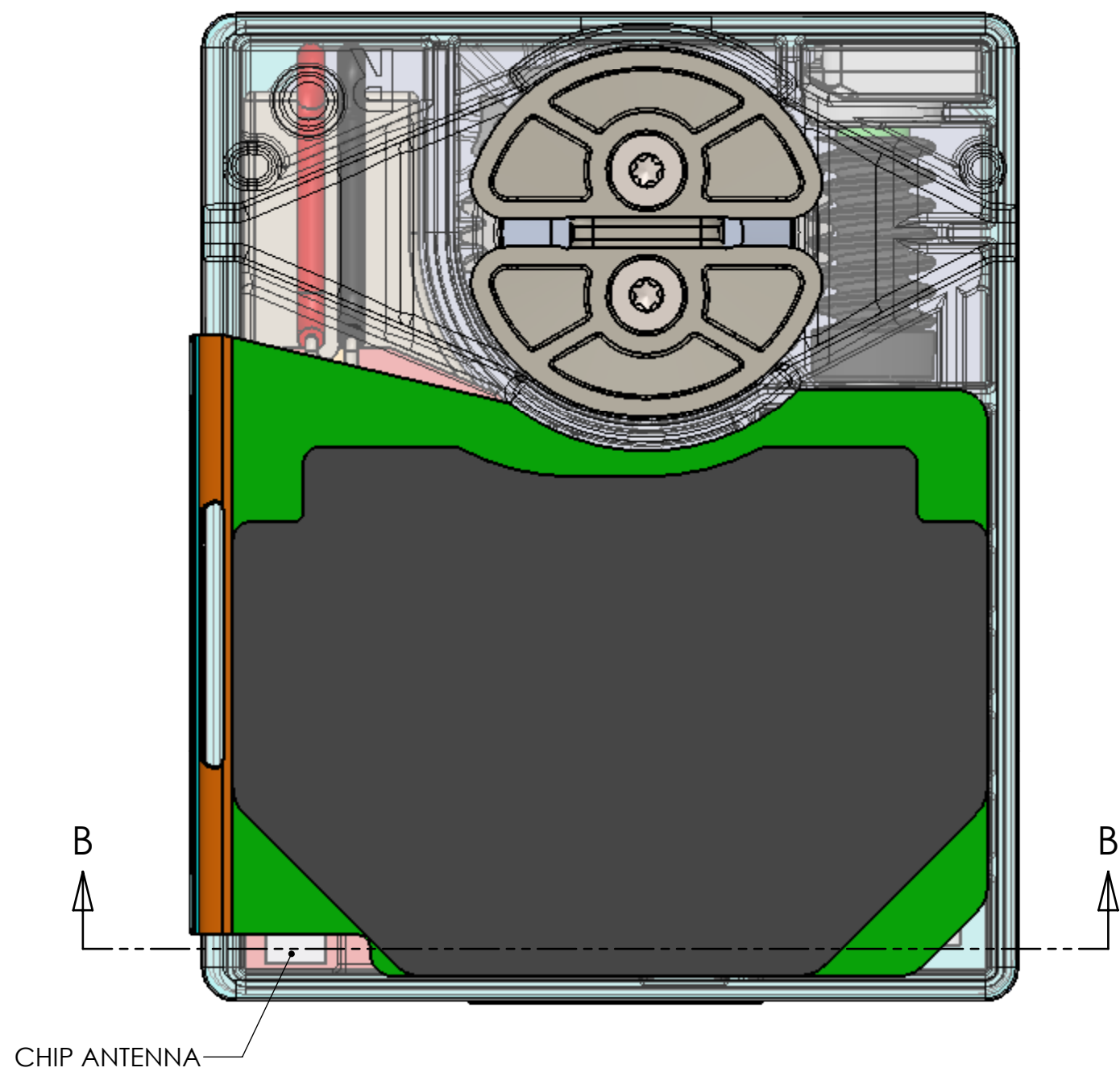


TITLE: **ASSY, LACE ENGINE, MP1, LEFT**

SIZE	DWG. NO.	REV
<b>C</b>	<b>101-02124-01</b>	<b>XX</b>

SCALE: 3:1	3D CAD FILE: 101-02124-01 REV XX.STEP	SHEET 2 OF 4
------------	--	--------------

1 2 3 4 5 6 7 8



TITLE: <b>ASSY, LACE ENGINE, MP1, RIGHT</b>		
SIZE <b>C</b>	DWG. NO. <b>101-02123-01</b>	REV <b>XX</b>
SCALE: 3:1	3D CAD FILE: 101-02123-01 REV XX.STEP	SHEET 3 OF 4

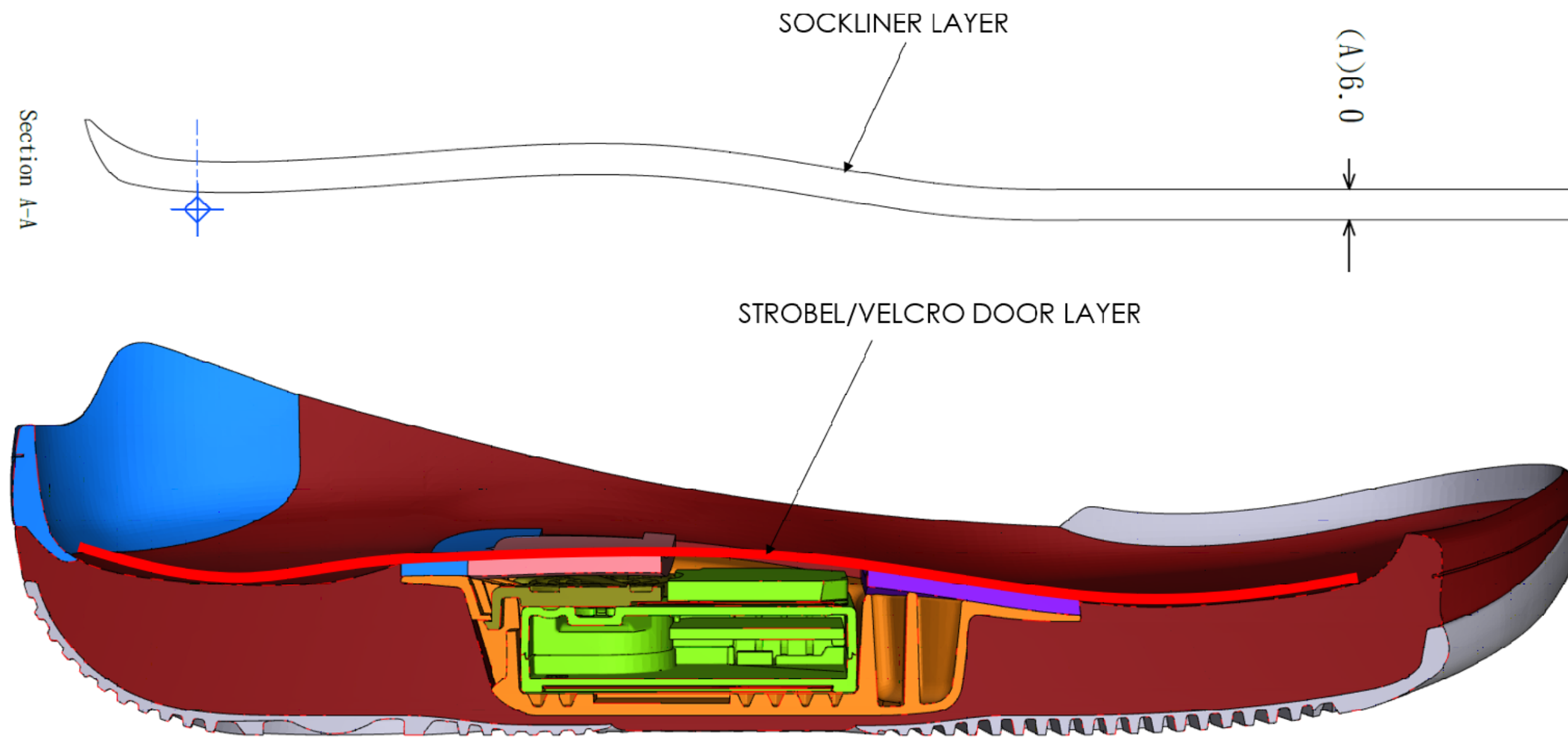
NOTES:

**1. MAX SEPARATION BETWEEN TOP OF LE POLYCARBONATE HOUSING & FOOT = 12.4mm**

- 1. TOP OF LE HOUSING TO TOP OF DIELECTRIC FOAM = 4.9mm
- 2. STROBEL/VELCRO DOOR THICKNESS = 1.5mm
- 3. SOCKLINER THICKNESS = 6.0mm

**2. MIN SEPARATION BETWEEN TOP OF LE POLYCARBONATE HOUSING & FOOT = 6.1mm**

- 1. TOP OF LE HOUSING TO TOP OF COMPRESSED DIELECTRIC FOAM = 1.8mm
- 2. COMPRESSED STROBEL/VELCRO DOOR THICKNESS = 1.3mm
- 3. COMPRESSED SOCKLINER THICKNESS = 3.0mm



TITLE:			<b>MATERIAL STACK UP</b>		
SIZE	DWG. NO.	REV			
<b>C</b>		<b>XX</b>			
SCALE: 3:1	3D CAD FILE:			SHEET 4 OF 4	