

RS87 TRANSCEIVER - INTERIOR PICTURES

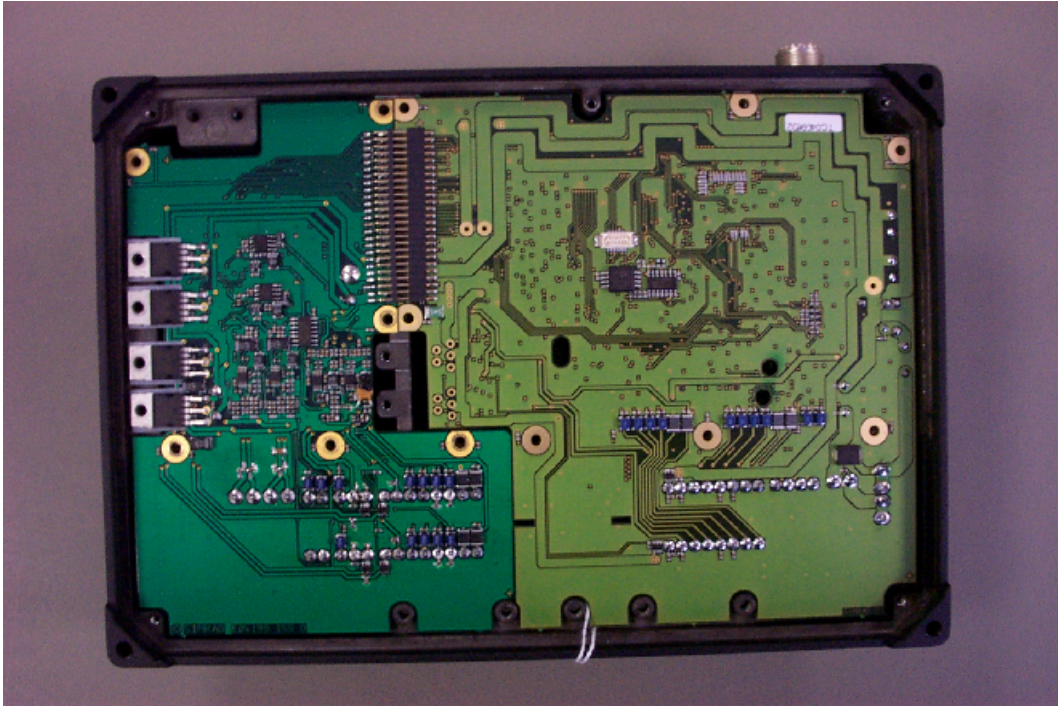


Fig 1: Interior View of Transceiver with Expansion PCB fitted

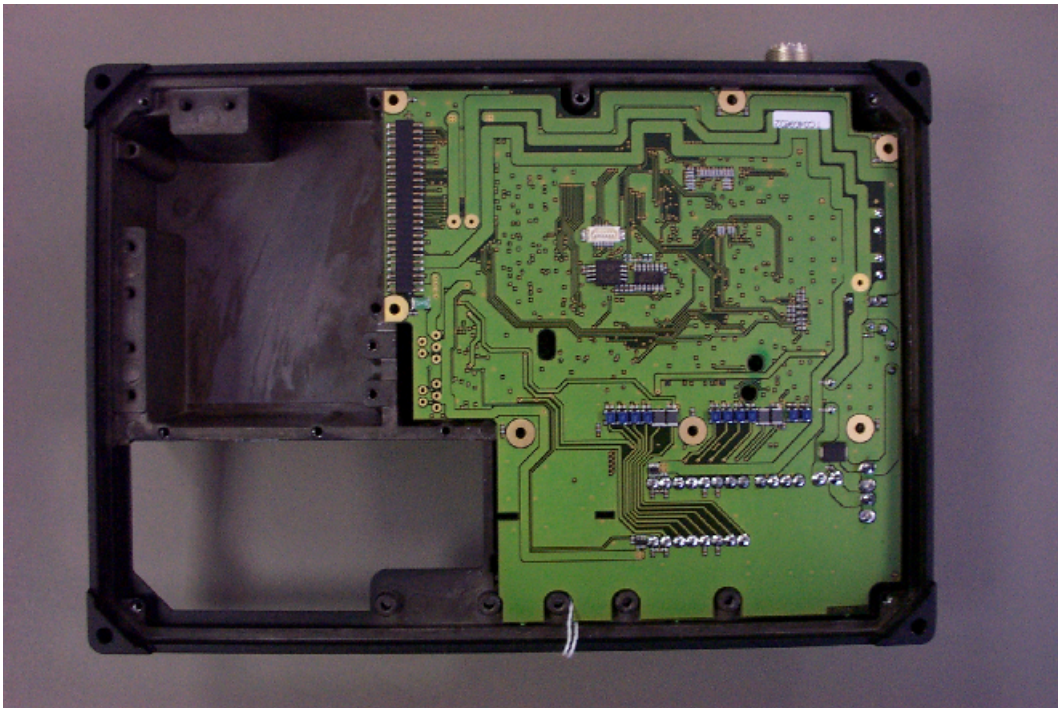


Fig 2: Interior View of Transceiver without Expansion PCB fitted



Fig 3: Interior View of Transceiver showing RF PCB only

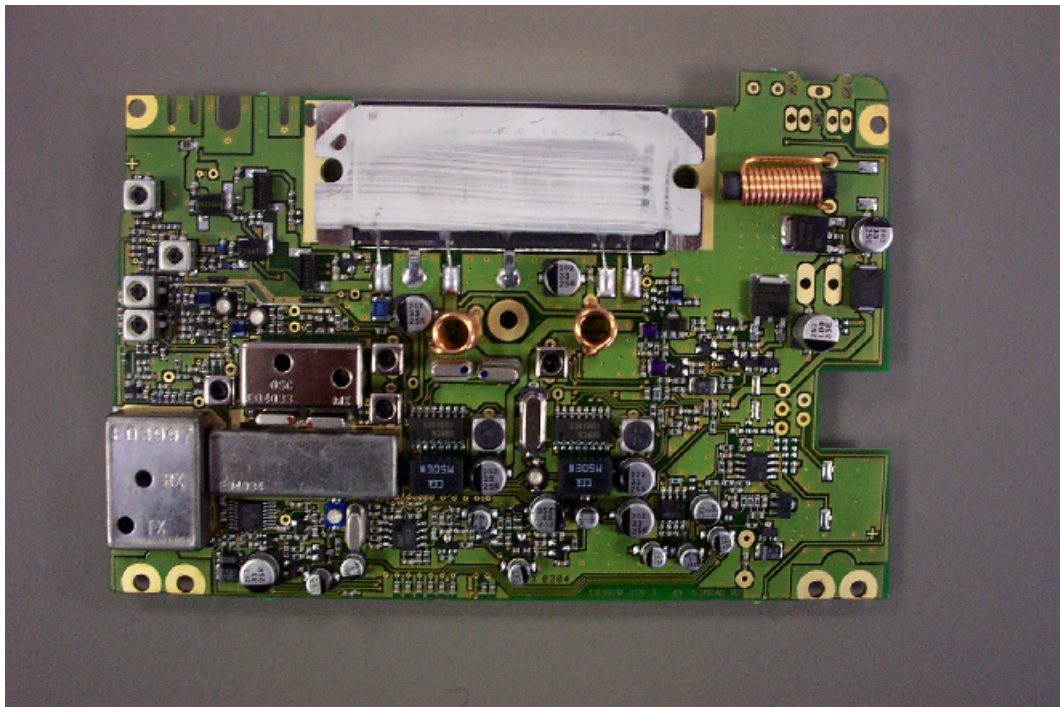


Fig 4: RF PCB – Component Side

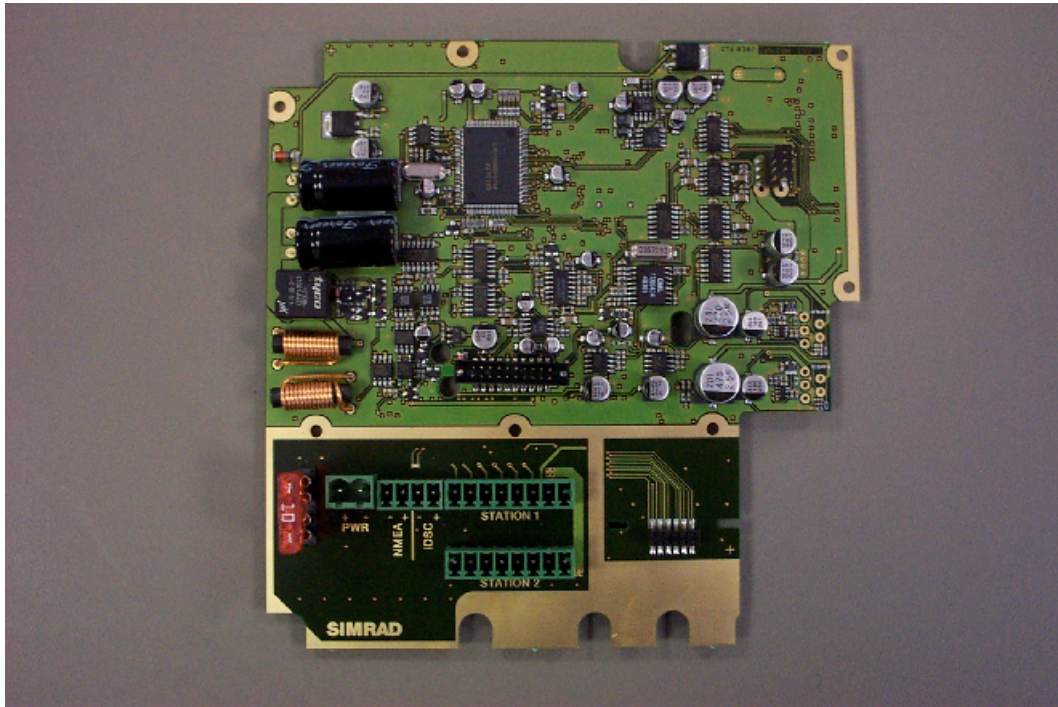


Fig 5: Control PCB – Component Side

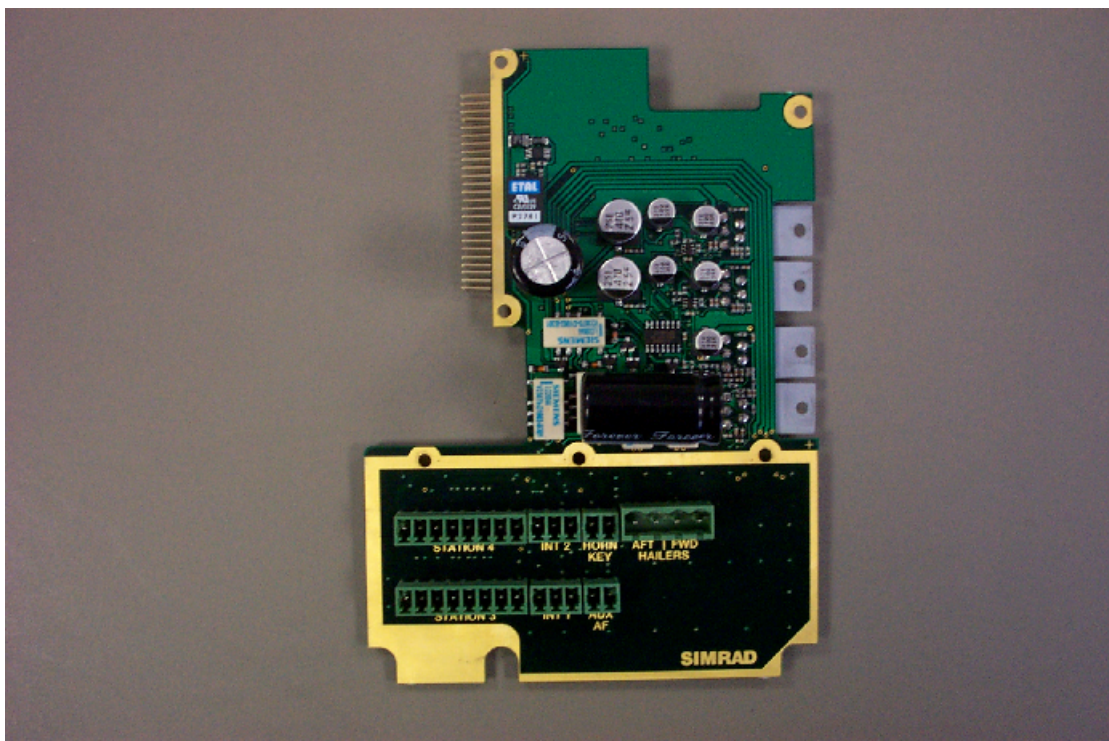


Fig 6: Expansion PCB – Component Side