

## **Appendix C – Highest Test Plots**

Test Date : 2023-11-24 | Ambient Temp : 22.8 °C | Tissue Temp : 22.4 °C

**Test Mode**

**1\_WLAN 2.4G\_802.11n\_HT40\_Rear Face\_0mm\_Ch3\_Ant 1+2**

**Device Under Test Properties**

Manufacturer or Brand	Model No. or Code Name	Sample No. or IMEI	DUT Type
Getac	ZX80	A008	Tablet

**Exposure Conditions**

Phantom Section	Band	Group, UID	Frequency [MHz], Channel Number	Conversion Factor	TSL Conductivity [S/m]	TSL Permittivity
Flat	WLAN 2.4GHz	WLAN, 10599 - AAC	2422.000, 3	8.2	1.83	40.5

**Hardware Setup**

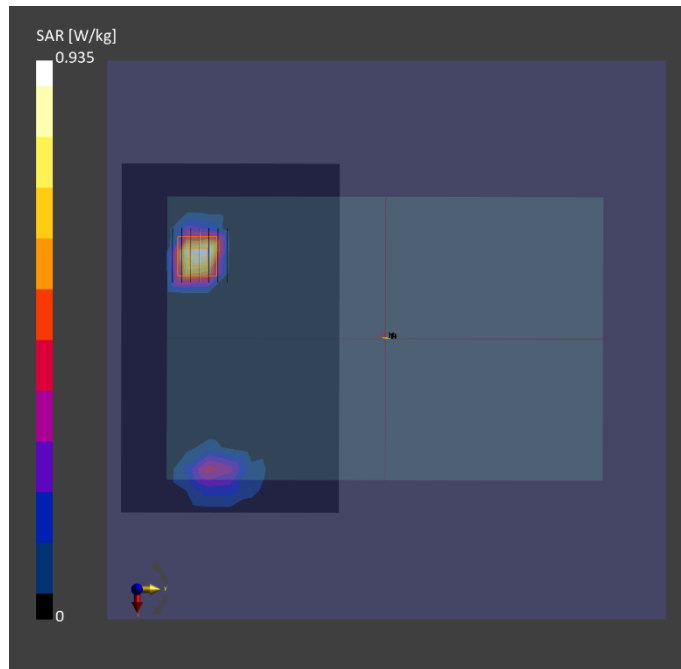
Phantom	Tissue Simulating Liquid	Probe   Calibration Date	DAE   Calibration Date
ELI V8.0 (20deg probe tilt) - 2180	HBBL-600-10000	EX3DV4 - SN7650 / 2023-05-22	DAE4 Sn1741 / 2023-08-23

**Scan Setup**

	Area Scan	Zoom Scan
Grid Extents [mm]	192.0 x 120.0	30.0 x 30.0 x 30.0
Grid Steps [mm]	12.0 x 12.0	5.0 x 5.0 x 5.0
Sensor Surface [mm]	3.0	1.4
Graded Grid	N/A	Yes
Grading Ratio	N/A	1.4

**Measurement Results**

	Area Scan	Zoom Scan
psSAR-1g [W/kg]	0.858	<b>1.08</b>
psSAR-10g [W/kg]	0.378	<b>0.427</b>
Power Drift [dB]		-0.03
TSL Correction	Positive only	Positive only
M2 / M1 [%]		39.8
Dist 3dB Peak [mm]		6.0



Test Date : 2023-11-24 | Ambient Temp : 22.8 °C | Tissue Temp : 22.4 °C

**Test Mode**

**3\_WLAN 5.3G\_802.11ac VHT160\_Rear Face\_0mm\_Ch50\_Ant 2**

**Device Under Test Properties**

Manufacturer or Brand	Model No. or Code Name	Sample No. or IMEI	DUT Type
Getac	ZX80	A008	Tablet

**Exposure Conditions**

Phantom Section	Band	Group, UID	Frequency [MHz], Channel Number	Conversion Factor	TSL Conductivity [S/m]	TSL Permittivity
Flat	WLAN 5GHz	WLAN, 10554 - AAD	5250.000, 50	5.91	4.56	35.2

**Hardware Setup**

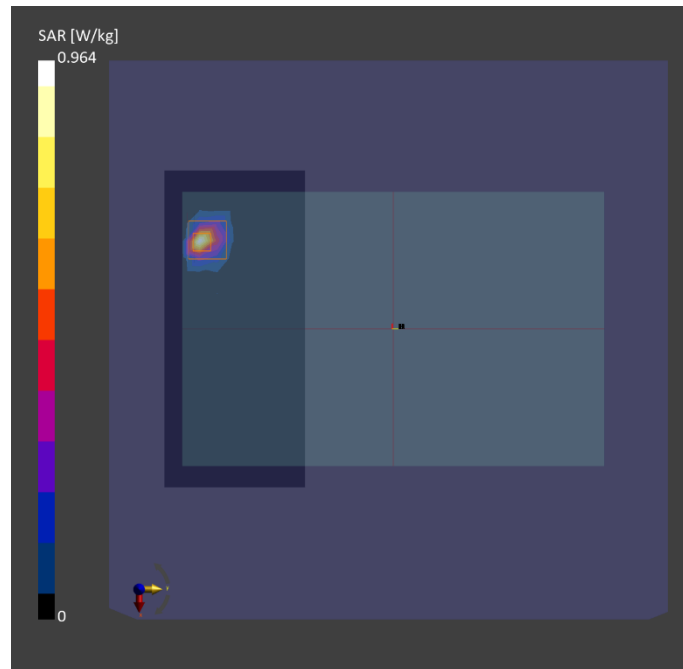
Phantom	Tissue Simulating Liquid	Probe   Calibration Date	DAE   Calibration Date
ELI V8.0 (20deg probe tilt) - 2180	HBBL-600-10000	EX3DV4 - SN7650 / 2023-05-22	DAE4 Sn1741 / 2023-08-23

**Scan Setup**

	Area Scan	Zoom Scan
Grid Extents [mm]	180.0 x 80.0	24.0 x 24.0 x 22.0
Grid Steps [mm]	10.0 x 10.0	4.0 x 4.0 x 1.4
Sensor Surface [mm]	3.0	1.4
Graded Grid	N/A	Yes
Grading Ratio	N/A	1.4

**Measurement Results**

	Area Scan	Zoom Scan
psSAR-1g [W/kg]	0.580	<b>0.524</b>
psSAR-10g [W/kg]	0.160	<b>0.143</b>
Power Drift [dB]		-0.05
TSL Correction	Positive only	Positive only
M2 / M1 [%]		62.4
Dist 3dB Peak [mm]		4.4



Test Date : 2023-11-27 | Ambient Temp : 22.6 °C | Tissue Temp : 22.5 °C

**Test Mode**

**4\_WLAN 5.6G\_802.11ac\_VHT160\_Rear Face\_0mm\_Ch114\_Ant 1+2**

**Device Under Test Properties**

Manufacturer or Brand	Model No. or Code Name	Sample No. or IMEI	DUT Type
Getac	ZX80	A008	Tablet

**Exposure Conditions**

Phantom Section	Band	Group, UID	Frequency [MHz], Channel Number	Conversion Factor	TSL Conductivity [S/m]	TSL Permittivity
Flat	WLAN 5GHz	WLAN, 10554 - AAD	5570.000, 114	5.25	4.89	36.2

**Hardware Setup**

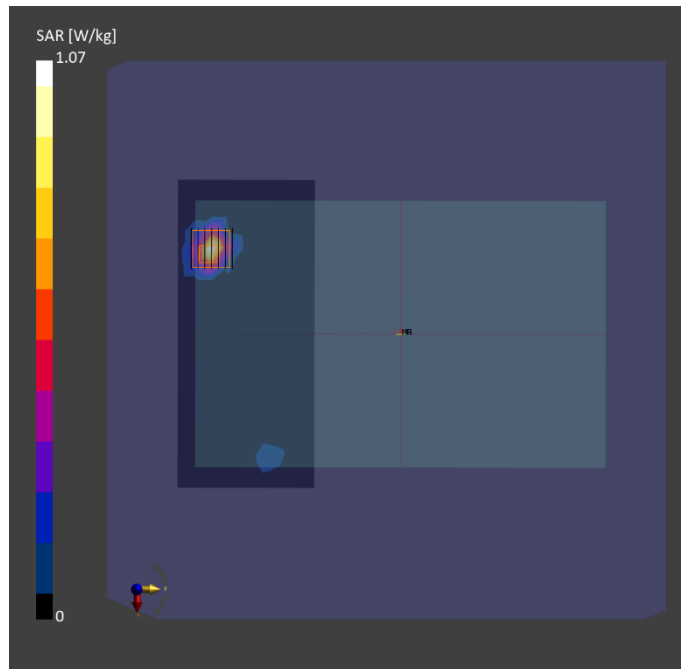
Phantom	Tissue Simulating Liquid	Probe   Calibration Date	DAE   Calibration Date
ELI V8.0 (20deg probe tilt) - 2180	HBBL-600-10000	EX3DV4 - SN7650 / 2023-05-22	DAE4 Sn1741 / 2023-08-23

**Scan Setup**

	Area Scan	Zoom Scan
Grid Extents [mm]	180.0 x 80.0	24.0 x 24.0 x 22.0
Grid Steps [mm]	10.0 x 10.0	4.0 x 4.0 x 1.4
Sensor Surface [mm]	3.0	1.4
Graded Grid	N/A	Yes
Grading Ratio	N/A	1.4

**Measurement Results**

	Area Scan	Zoom Scan
psSAR-1g [W/kg]	0.702	<b>0.892</b>
psSAR-10g [W/kg]	0.208	<b>0.243</b>
Power Drift [dB]		0.05
TSL Correction	Positive only	Positive only
M2 / M1 [%]		59.8
Dist 3dB Peak [mm]		4.7



Test Date : 2023-11-27 | Ambient Temp : 22.6 °C | Tissue Temp : 22.5 °C

**Test Mode**

**5\_WLAN 5.8G\_802.11ac VHT80\_Rear Face\_0mm\_Ch155\_Ant 2**

**Device Under Test Properties**

Manufacturer or Brand	Model No. or Code Name	Sample No. or IMEI	DUT Type
Getac	ZX80	A008	Tablet

**Exposure Conditions**

Phantom Section	Band	Group, UID	Frequency [MHz], Channel Number	Conversion Factor	TSL Conductivity [S/m]	TSL Permittivity
Flat	WLAN 5GHz	WLAN, 10544 - AAC	5775.000, 155	5.28	5.03	34.4

**Hardware Setup**

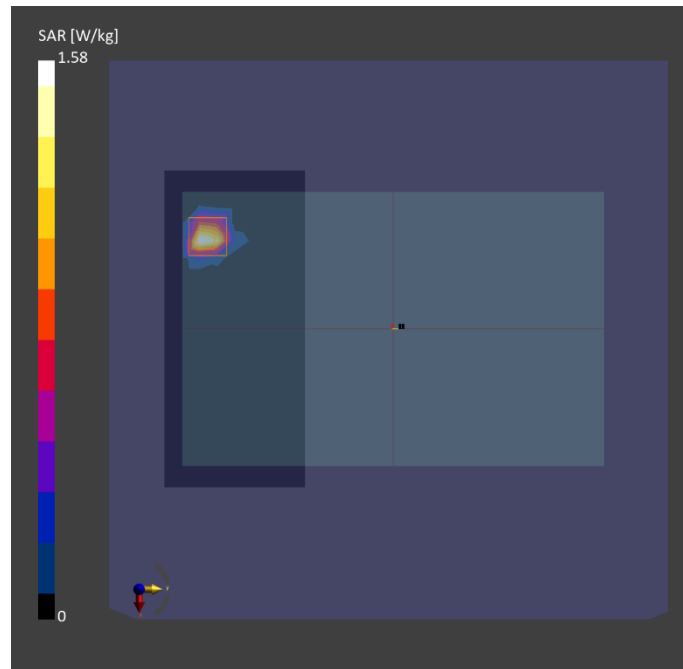
Phantom	Tissue Simulating Liquid	Probe   Calibration Date	DAE   Calibration Date
ELI V8.0 (20deg probe tilt) - 2180	HBBL-600-10000	EX3DV4 - SN7650 / 2023-05-22	DAE4 Sn1741 / 2023-08-23

**Scan Setup**

	Area Scan	Zoom Scan
Grid Extents [mm]	180.0 x 80.0	24.0 x 24.0 x 22.0
Grid Steps [mm]	10.0 x 10.0	4.0 x 4.0 x 1.4
Sensor Surface [mm]	3.0	1.4
Graded Grid	N/A	Yes
Grading Ratio	N/A	1.4

**Measurement Results**

	Area Scan	Zoom Scan
psSAR-1g [W/kg]	1.20	<b>1.06</b>
psSAR-10g [W/kg]	0.354	<b>0.335</b>
Power Drift [dB]		-0.04
TSL Correction	Positive only	Positive only
M2 / M1 [%]		58.7
Dist 3dB Peak [mm]		4.9



Test Date : 2023-11-24 | Ambient Temp : 22.8 °C | Tissue Temp : 22.4 °C

**Test Mode**

**6\_BT\_8DPSK\_Rear Face\_0mm\_Ch39\_Ant 2**

**Device Under Test Properties**

Manufacturer or Brand	Model No. or Code Name	Sample No. or IMEI	DUT Type
Getac	ZX80	A008	Tablet

**Exposure Conditions**

Phantom Section	Band	Group, UID	Frequency [MHz], Channel Number	Conversion Factor	TSL Conductivity [S/m]	TSL Permittivity
Flat	ISM 2.4 GHz Band	Bluetooth, 10038 - CAA	2441.000, 39	8.2	1.85	40.5

**Hardware Setup**

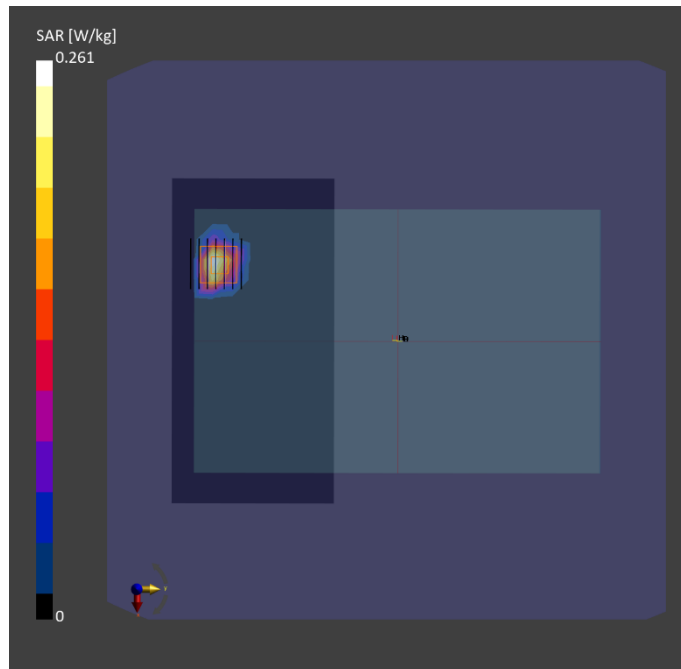
Phantom	Tissue Simulating Liquid	Probe   Calibration Date	DAE   Calibration Date
ELI V8.0 (20deg probe tilt) - 2180	HBBL-600-10000	EX3DV4 - SN7650 / 2023-05-22	DAE4 Sn1741 / 2023-08-23

**Scan Setup**

	Area Scan	Zoom Scan
Grid Extents [mm]	192.0 x 96.0	30.0 x 30.0 x 30.0
Grid Steps [mm]	12.0 x 12.0	5.0 x 5.0 x 5.0
Sensor Surface [mm]	3.0	1.4
Graded Grid	N/A	Yes
Grading Ratio	N/A	1.4

**Measurement Results**

	Area Scan	Zoom Scan
psSAR-1g [W/kg]	0.212	<b>0.277</b>
psSAR-10g [W/kg]	0.089	<b>0.10</b>
Power Drift [dB]		0.03
TSL Correction	Positive only	Positive only
M2 / M1 [%]		44.4
Dist 3dB Peak [mm]		5.9



Test Date : 2023-11-28 | Ambient Temp : 22.1 °C | Tissue Temp : 22.0 °C

**Test Mode**

**7\_UNII-5\_802.11ax HE160\_Rear Face\_0mm\_Ch15\_Ant 2**

**Device Under Test Properties**

Manufacturer or Brand	Model No. or Code Name	Sample No. or IMEI	DUT Type
Getac	ZX80	A008	Tablet

**Exposure Conditions**

Phantom Section	Band	Group, UID	Frequency [MHz], Channel Number	Conversion Factor	TSL Conductivity [S/m]	TSL Permittivity
Flat	U-NII-5	WLAN, 10755 - AAC	6025.000, 15	5.4	5.29	34.0

**Hardware Setup**

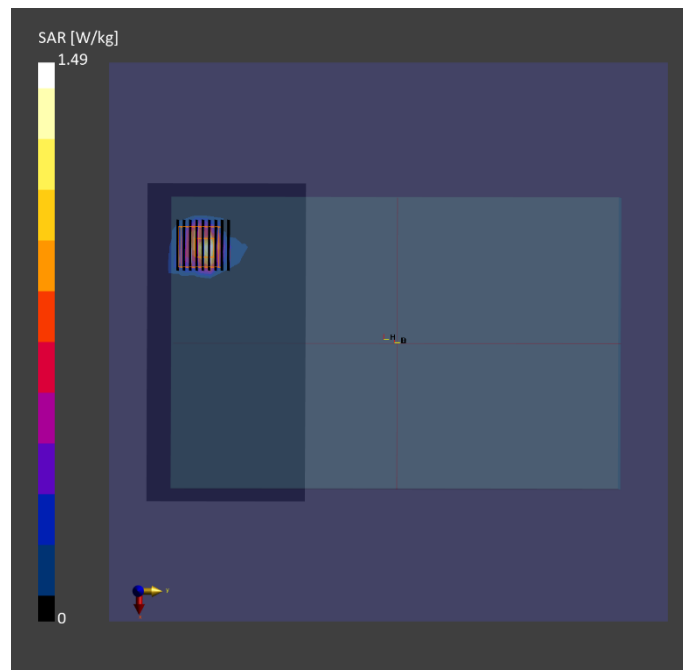
Phantom	Tissue Simulating Liquid	Probe   Calibration Date	DAE   Calibration Date
ELI V8.0 (20deg probe tilt) - 2180	HBBL-600-10000	EX3DV4 - SN7650 / 2023-05-22	DAE4 Sn1741 / 2023-08-23

**Scan Setup**

	Area Scan	Zoom Scan
Grid Extents [mm]	170.0 x 85.0	23.8 x 23.8 x 22.0
Grid Steps [mm]	8.5 x 8.5	3.4 x 3.4 x 1.4
Sensor Surface [mm]	3.0	1.4
Graded Grid	N/A	Yes
Grading Ratio	N/A	1.4

**Measurement Results**

	Area Scan	Zoom Scan
psSAR-1g [W/kg]	1.04	<b>1.07</b>
psSAR-10g [W/kg]	0.318	<b>0.347</b>
psAPD (1.0 cm <sup>2</sup> , sq) [W/m <sup>2</sup> ]		<b>11.2</b>
psAPD (4.0 cm <sup>2</sup> , sq) [W/m <sup>2</sup> ]		<b>8.04</b>
Power Drift [dB]		0.04
TSL Correction	Positive only	Positive only
M2 / M1 [%]		52.7
Dist 3dB Peak [mm]		4.4



Test Date : 2023-12-05 | Ambient Temp : 22.6 °C

**Test Mode**

**8\_UNII-5\_802.11ax HE160\_Rear Face\_0mm\_Ch15\_Ant 2**

**Device Under Test Properties**

Manufacturer or Brand	Model No. or Code Name	Sample No. or IMEI	DUT Type
Getac	ZX80	A008	Tablet

**Exposure Conditions**

Phantom Section	Band	Group, UID	Frequency [MHz], Channel Number	Conversion Factor
5G	U-NII-5	WLAN, 10755 - AAC	6025.0, 15	1.0

**Hardware Setup**

Phantom	Medium	Probe   Calibration Date	DAE   Calibration Date
mmWave - 1102	Air	EUmmWV4 - SN9639_F1-55GHz / 2023-08-18	DAE4 Sn1669 / 2023-05-23

**Scan Setup**

	5G Scan
Grid Extents [mm]	100.0 x 100.0
Grid Steps [mm]	0.0502 x 0.0502
Sensor Surface [mm]	2.0

**Measurement Results**

	5G Scan
Avg. Area [cm <sup>2</sup> ]	4.00
psPD n+ [W/m <sup>2</sup> ]	<b>4.27</b>
psPD tot+ [W/m <sup>2</sup> ]	<b>5.26</b>
psPD mod+ [W/m <sup>2</sup> ]	10.4
E max [V/m]	76.9
Power Drift [dB]	-0.04

