

## **Appendix C – Highest Test Plots**

Test Date : 2024-07-31 | Ambient Temp : 21.9 °C | Tissue Temp : 20.9 °C

**Test Mode**

**1\_WLAN2.4G\_802.11b\_Right Side\_0 mm\_Ch6\_Ant 1\_Battery1**

**Device Under Test Properties**

Manufacturer or Brand	Model No. or Code Name	Sample No. or IMEI	DUT Type
Getac	ZX10	A006	Tablet

**Exposure Conditions**

Phantom Section	Band	Group, UID	Frequency [MHz], Channel Number	Conversion Factor	TSL Conductivity [S/m]	TSL Permittivity
Flat	WLAN 2.4GHz	WLAN, 10012 - CAB	2437.000, 6	7.05	1.78	39.9

**Hardware Setup**

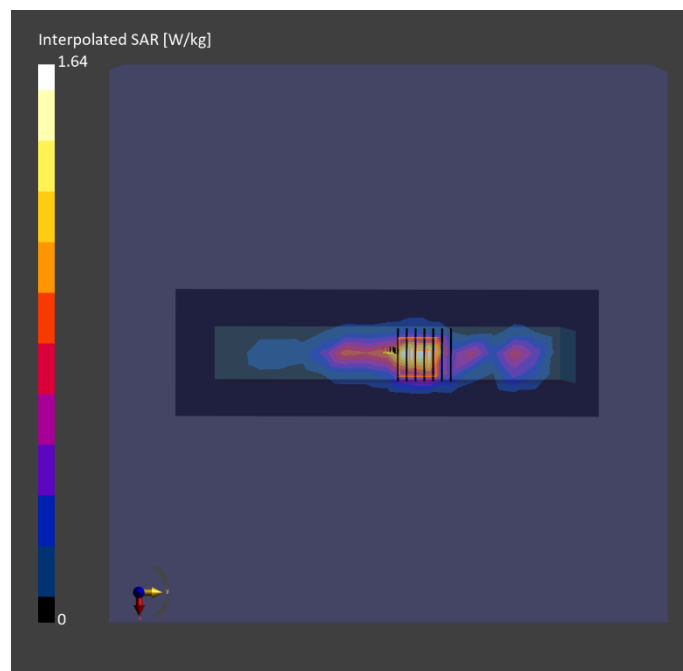
Phantom	Tissue Simulating Liquid	Probe   Calibration Date	DAE   Calibration Date
ELI V8.0 (20deg probe tilt) - 2180	HBBL-600-10000	EX3DV4 - SN7757 / 2023-08-22	DAE4 Sn1669 / 2024-05-16

**Scan Setup**

	Area Scan	Zoom Scan
Grid Extents [mm]	60.0 x 228.0	30.0 x 30.0 x 30.0
Grid Steps [mm]	12.0 x 12.0	5.0 x 5.0 x 5.0
Sensor Surface [mm]	3.0	1.4
Graded Grid	N/A	Yes
Grading Ratio	N/A	1.5

**Measurement Results**

	Area Scan	Zoom Scan
psSAR-1g [W/kg]	0.671	<b>0.721</b>
psSAR-10g [W/kg]	0.307	<b>0.308</b>
Power Drift [dB]		-0.01
TSL Correction	Positive only	Positive only
M2 / M1 [%]		35.0
Dist 3dB Peak [mm]		6.0



Test Date : 2024-08-01 | Ambient Temp : 22.1 °C | Tissue Temp : 21.2 °C

**Test Mode**

**2\_WLAN5.3G\_802.11ac\_VHT160\_Right Side\_0 mm\_Ch50\_Ant 0+1\_Battery1**

**Device Under Test Properties**

Manufacturer or Brand	Model No. or Code Name	Sample No. or IMEI	DUT Type
Getac	ZX10	A006	Tablet

**Exposure Conditions**

Phantom Section	Band	Group, UID	Frequency [MHz], Channel Number	Conversion Factor	TSL Conductivity [S/m]	TSL Permittivity
Flat	WLAN 5GHz	WLAN, 10554 - AAE	5250.000, 50	5.02	4.54	36.3

**Hardware Setup**

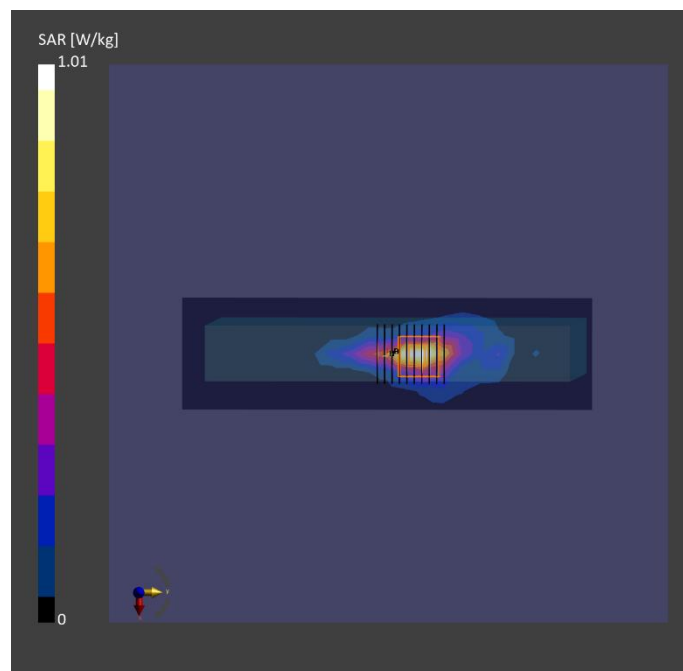
Phantom	Tissue Simulating Liquid	Probe   Calibration Date	DAE   Calibration Date
ELI V8.0 (20deg probe tilt) - 2180	HBBL-600-10000	EX3DV4 - SN7757 / 2023-08-22	DAE4 Sn1669 / 2024-05-16

**Scan Setup**

	Area Scan	Zoom Scan
Grid Extents [mm]	50.0 x 210.0	24.0 x 24.0 x 22.0
Grid Steps [mm]	10.0 x 10.0	4.0 x 4.0 x 1.4
Sensor Surface [mm]	3.0	1.4
Graded Grid	N/A	Yes
Grading Ratio	N/A	1.4

**Measurement Results**

	Area Scan	Zoom Scan
psSAR-1g [W/kg]	0.714	<b>0.736</b>
psSAR-10g [W/kg]	0.244	<b>0.236</b>
Power Drift [dB]		-0.03
TSL Correction	Positive only	Positive only
M2 / M1 [%]		65.9
Dist 3dB Peak [mm]		6.9



Test Date : 2024-08-01 | Ambient Temp : 22.1 °C | Tissue Temp : 21.2 °C

**Test Mode**

**3\_WLAN5.6G\_802.11ac\_VHT160\_Right Side\_0 mm\_Ch114\_Ant 1\_Battery1**

**Device Under Test Properties**

Manufacturer or Brand	Model No. or Code Name	Sample No. or IMEI	DUT Type
Getac	ZX10	A006	Tablet

**Exposure Conditions**

Phantom Section	Band	Group, UID	Frequency [MHz], Channel Number	Conversion Factor	TSL Conductivity [S/m]	TSL Permittivity
Flat	WLAN 5GHz	WLAN, 10554 - AAE	5570.000, 114	4.29	4.89	35.7

**Hardware Setup**

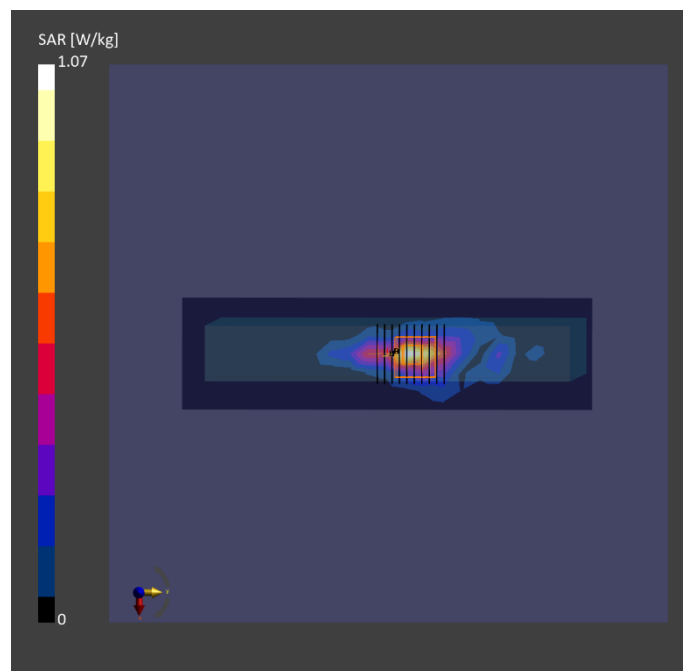
Phantom	Tissue Simulating Liquid	Probe   Calibration Date	DAE   Calibration Date
ELI V8.0 (20deg probe tilt) - 2180	HBBL-600-10000	EX3DV4 - SN7757 / 2023-08-22	DAE4 Sn1669 / 2024-05-16

**Scan Setup**

	Area Scan	Zoom Scan
Grid Extents [mm]	50.0 x 210.0	24.0 x 24.0 x 22.0
Grid Steps [mm]	10.0 x 10.0	4.0 x 4.0 x 1.4
Sensor Surface [mm]	3.0	1.4
Graded Grid	N/A	Yes
Grading Ratio	N/A	1.4

**Measurement Results**

	Area Scan	Zoom Scan
psSAR-1g [W/kg]	0.716	<b>0.704</b>
psSAR-10g [W/kg]	0.232	<b>0.219</b>
Power Drift [dB]		-0.03
TSL Correction	Positive only	Positive only
M2 / M1 [%]		62.9
Dist 3dB Peak [mm]		6.6



Test Date : 2024-08-01 | Ambient Temp : 22.1 °C | Tissue Temp : 21.2 °C

**Test Mode**

**4\_WLAN5.8G\_802.11ac\_VHT80\_Top Side\_0 mm\_Ch155\_Ant 0+1\_Battery1**

**Device Under Test Properties**

Manufacturer or Brand	Model No. or Code Name	Sample No. or IMEI	DUT Type
Getac	ZX10	A006	Tablet

**Exposure Conditions**

Phantom Section	Band	Group, UID	Frequency [MHz], Channel Number	Conversion Factor	TSL Conductivity [S/m]	TSL Permittivity
Flat	WLAN 5GHz	WLAN, 10544 - AAD	5775.000, 155	4.36	5.13	35.4

**Hardware Setup**

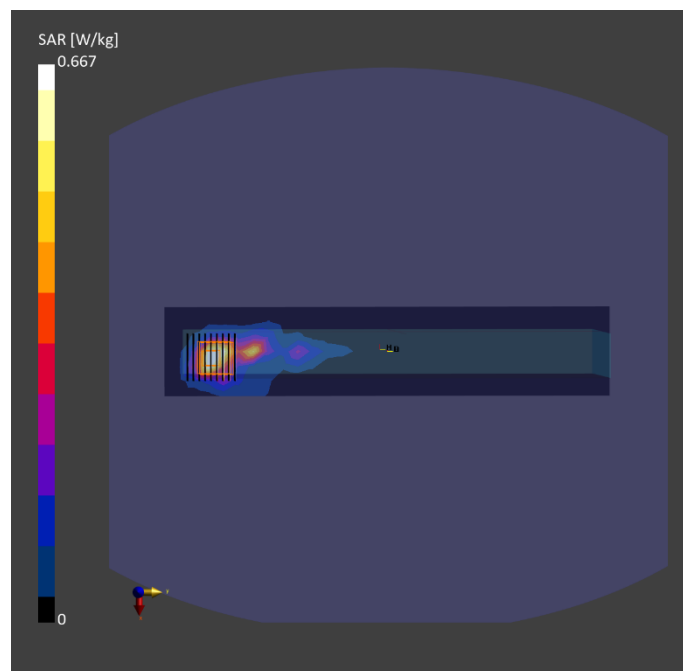
Phantom	Tissue Simulating Liquid	Probe   Calibration Date	DAE   Calibration Date
ELI V8.0 (20deg probe tilt) - 2180	HBBL-600-10000	EX3DV4 - SN7757 / 2023-08-22	DAE4 Sn1669 / 2024-05-16

**Scan Setup**

	Area Scan	Zoom Scan
Grid Extents [mm]	50.0 x 300.0	24.0 x 24.0 x 22.0
Grid Steps [mm]	10.0 x 10.0	4.0 x 4.0 x 1.4
Sensor Surface [mm]	3.0	1.4
Graded Grid	N/A	Yes
Grading Ratio	N/A	1.4

**Measurement Results**

	Area Scan	Zoom Scan
psSAR-1g [W/kg]	0.532	<b>0.714</b>
psSAR-10g [W/kg]	0.186	<b>0.224</b>
Power Drift [dB]		0.01
TSL Correction	Positive only	Positive only
M2 / M1 [%]		54.9
Dist 3dB Peak [mm]		6.6



Test Date : 2024-07-31 | Ambient Temp : 21.9 °C | Tissue Temp : 20.9 °C

**Test Mode**

**7\_U-NII 6\_802.11ax HE160\_Top Side\_0 mm\_Ch111\_Ant 0+1\_Battery1**

**Device Under Test Properties**

Manufacturer or Brand	Model No. or Code Name	Sample No. or IMEI	DUT Type
Getac	ZX10	A006	Tablet

**Exposure Conditions**

Phantom Section	Band	Group, UID	Frequency [MHz], Channel Number	Conversion Factor	TSL Conductivity [S/m]	TSL Permittivity
Flat	U-NII-6	WLAN, 10755 - AAC	6505.000, 111	4.47	5.99	34.2

**Hardware Setup**

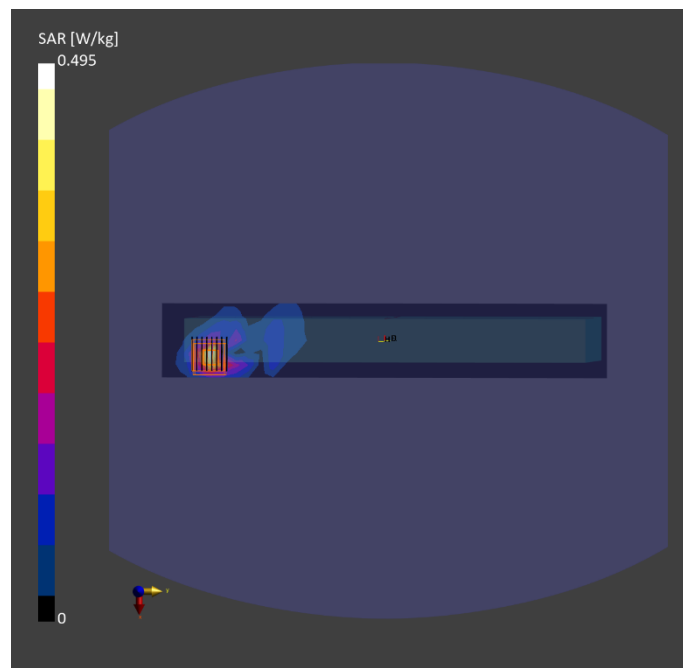
Phantom	Tissue Simulating Liquid	Probe   Calibration Date	DAE   Calibration Date
ELI V8.0 (20deg probe tilt) - 2180	HBBL-600-10000	EX3DV4 - SN7757 / 2023-08-22	DAE4 Sn1669 / 2024-05-16

**Scan Setup**

	Area Scan	Zoom Scan
Grid Extents [mm]	51.0 x 306.0	22.0 x 22.0 x 22.0
Grid Steps [mm]	8.5 x 8.5	3.4 x 3.4 x 1.4
Sensor Surface [mm]	3.0	1.4
Graded Grid	N/A	Yes
Grading Ratio	N/A	1.4

**Measurement Results**

	Area Scan	Zoom Scan
psSAR-1g [W/kg]	0.346	<b>0.411</b>
psSAR-10g [W/kg]	0.108	<b>0.124</b>
psAPD (1.0 cm <sup>2</sup> , sq) [W/m <sup>2</sup> ]		<b>4.11</b>
psAPD (4.0 cm <sup>2</sup> , sq) [W/m <sup>2</sup> ]		<b>2.84</b>
Power Drift [dB]		0.02
TSL Correction	Positive only	Positive only
M2 / M1 [%]		51.0
Dist 3dB Peak [mm]		5.5



Test Date : 2024-07-31 | Ambient Temp : 21.9 °C | Tissue Temp : 20.9 °C

**Test Mode**

**5\_Bluetooth\_GFSK\_Right Side\_0 mm\_Ch78\_Ant 1\_Battery1**

**Device Under Test Properties**

Manufacturer or Brand	Model No. or Code Name	Sample No. or IMEI	DUT Type
Getac	ZX10	A006	Tablet

**Exposure Conditions**

Phantom Section	Band	Group, UID	Frequency [MHz], Channel Number	Conversion Factor	TSL Conductivity [S/m]	TSL Permittivity
Flat	ISM 2.4 GHz Band	Bluetooth, 10032 - CAA	2480.000, 78	7.05	1.82	39.9

**Hardware Setup**

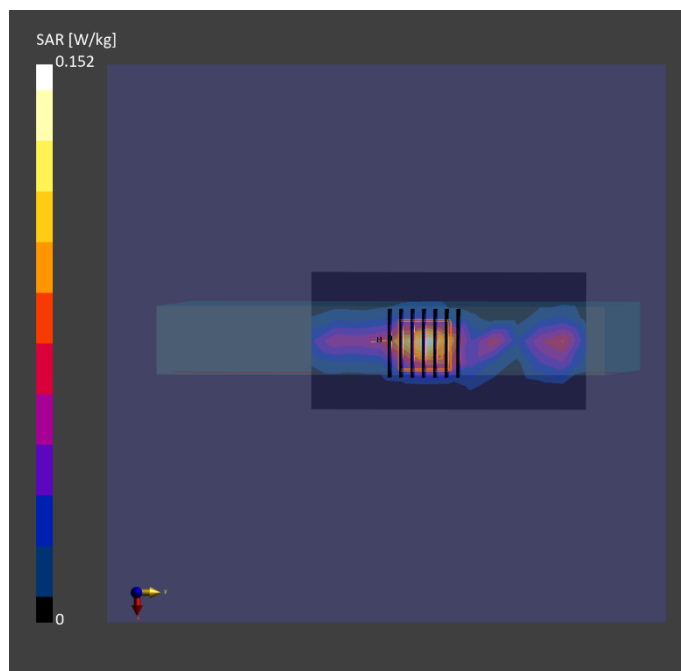
Phantom	Tissue Simulating Liquid	Probe   Calibration Date	DAE   Calibration Date
ELI V8.0 (20deg probe tilt) - 2180	HBBL-600-10000	EX3DV4 - SN7757 / 2023-08-22	DAE4 Sn1669 / 2024-05-16

**Scan Setup**

	Area Scan	Zoom Scan
Grid Extents [mm]	60.0 x 108.0	30.0 x 30.0 x 30.0
Grid Steps [mm]	10.0 x 10.0	5.0 x 5.0 x 5.0
Sensor Surface [mm]	3.0	1.4
Graded Grid	N/A	Yes
Grading Ratio	N/A	1.5

**Measurement Results**

	Area Scan	Zoom Scan
psSAR-1g [W/kg]	0.114	<b>0.120</b>
psSAR-10g [W/kg]	0.049	<b>0.048</b>
Power Drift [dB]		0.02
TSL Correction	Positive only	Positive only
M2 / M1 [%]		30.2
Dist 3dB Peak [mm]		5.2



Date: 2024/7/30

**6\_RFID\_PSK\_Bottom Surface\_0mm \_Ant RFID\_Battery1**

**DUT: ZX10**

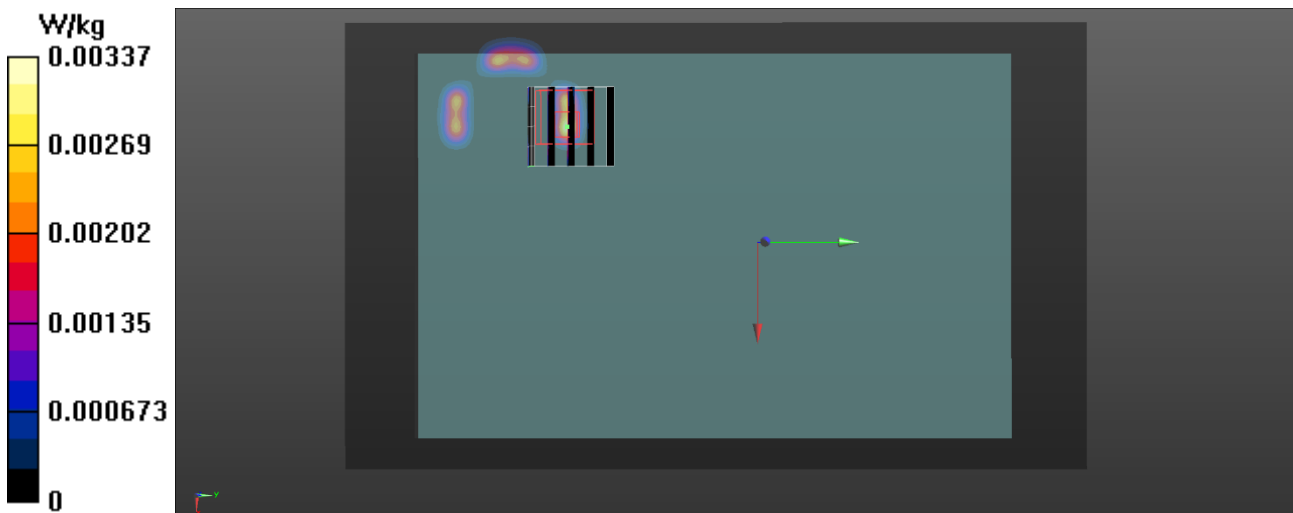
Communication System: UID 0, NFC (0); Frequency: 13.56 MHz;Duty Cycle: 1:1  
 Medium parameters used (interpolated):  $f = 13.56$  MHz;  $\sigma = 0.731$  S/m;  $\epsilon_r = 55.156$ ;  $\rho = 1000$  kg/m<sup>3</sup>  
 Phantom section: Flat Section  
 Measurement Standard: DASYS

DASY5.2 Configuration:

- Area Scan setting - Find Secondary Maximum Within:2.0dB and with a peak SAR value greater than 0.5 W/Kg
- Probe: EX3DV4 - SN7650; ConvF(17.02, 18.46, 16.04) @ 13.56 MHz; Calibrated: 2024/6/4
- Sensor-Surface: 1.4mm (Mechanical Surface Detection)
- Electronics: DAE4 Sn541; Calibrated: 2024/3/11
- Phantom: ELI; Type: QD OVA 002 AA; Serial: 1175
- Measurement SW: DASY52, Version 52.10 (4); SEMCAD X Version 14.6.14 (7501)

**Area Scan (121x201x1):** Interpolated grid: dx=1.500 mm, dy=1.500 mm  
 Maximum value of SAR (interpolated) = 0.00337 W/kg

**Zoom Scan (5x5x7)/Cube 0:** Measurement grid: dx=8mm, dy=8mm, dz=5mm  
 Reference Value = 0 V/m; Power Drift = 0.02 dB  
 Peak SAR (extrapolated) = 0.00521 W/kg  
**SAR(1 g) = 0.000813 W/kg; SAR(10 g) = 0.000262 W/kg** (SAR corrected for target medium)  
 Smallest distance from peaks to all points 3 dB below: Larger than measurement grid (> 16 mm)  
 Ratio of SAR at M2 to SAR at M1 = 10.4%  
 Maximum value of SAR (measured) = 0.00272 W/kg





Test Date : 2024-08-05 | Ambient Temp : 22.5 °C

**Test Mode**

**8\_U-NII 6\_802.11ax HE160\_Top Side\_0 mm\_Ch111\_Ant 0+1\_Battery1**

**Device Under Test Properties**

Manufacturer or Brand	Model No. or Code Name	Sample No. or IMEI	DUT Type
Getac	ZX10	A006	Tablet

**Exposure Conditions**

Phantom Section	Band	Group, UID	Frequency [MHz], Channel Number	Conversion Factor
5G	U-NII-6	WLAN, 10755 - AAC	6505.0, 111	1.0

**Hardware Setup**

Phantom	Medium	Probe   Calibration Date	DAE   Calibration Date
mmWave - 1102	Air	EUmmWV3 - SN9403_F1-55GHz / 2023-12-05	DAE4 Sn1742 / 2022-08-31

**Scan Setup**

	5G Scan
Grid Extents [mm]	92.0 x 92.0
Grid Steps [mm]	0.0542 x 0.0542
Sensor Surface [mm]	2.0

**Measurement Results**

	5G Scan
Avg. Area [cm <sup>2</sup> ]	4.00
psPD n+ [W/m <sup>2</sup> ]	<b>2.28</b>
psPD tot+ [W/m <sup>2</sup> ]	<b>3.78</b>
psPD mod+ [W/m <sup>2</sup> ]	5.60
E max [V/m]	58.5
Power Drift [dB]	-0.17

