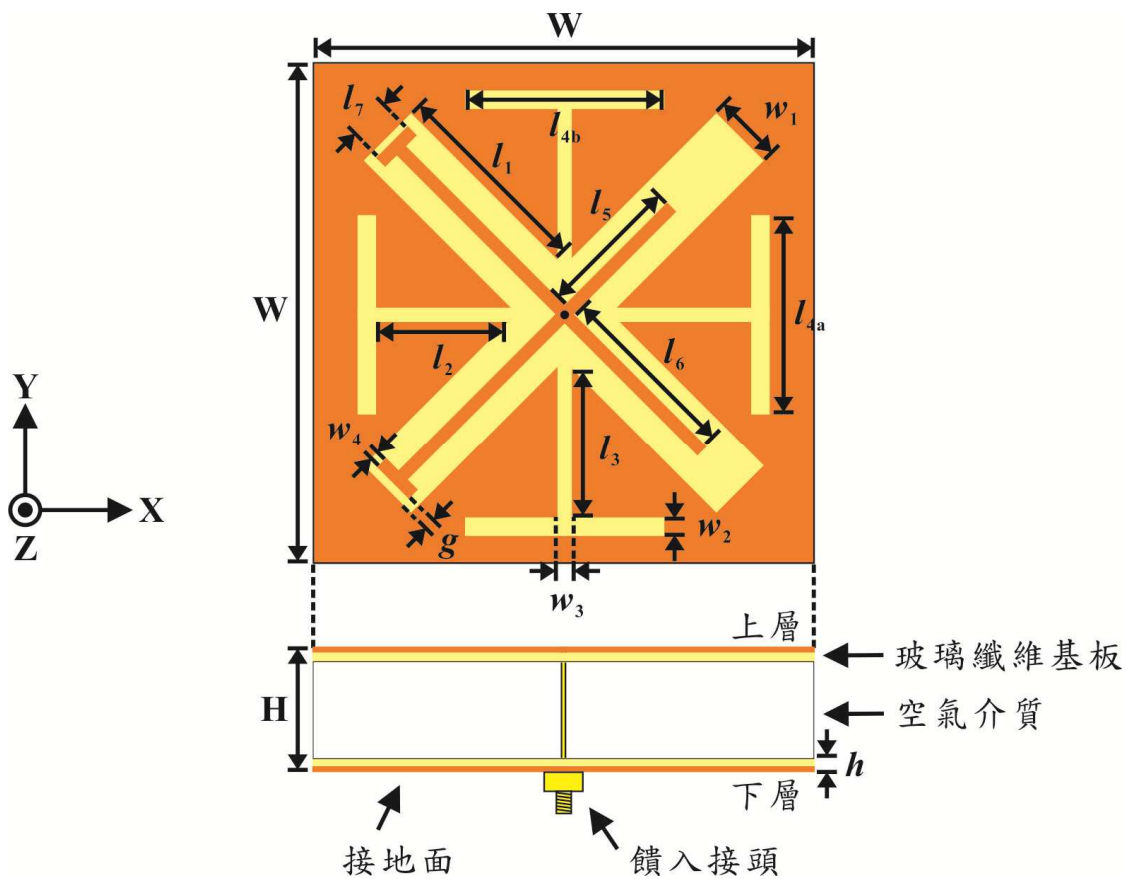
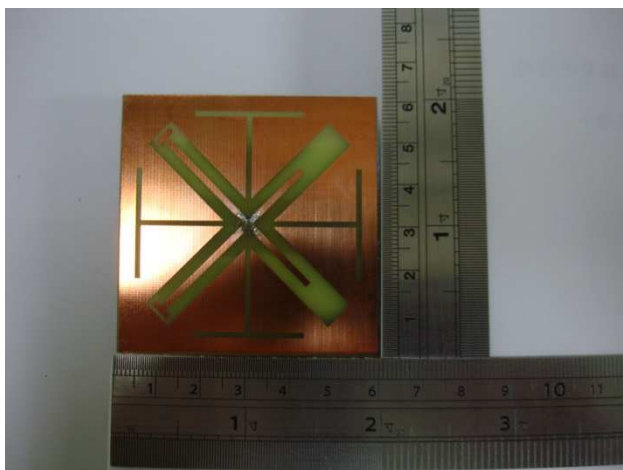


3D PATCH Antenna spec.



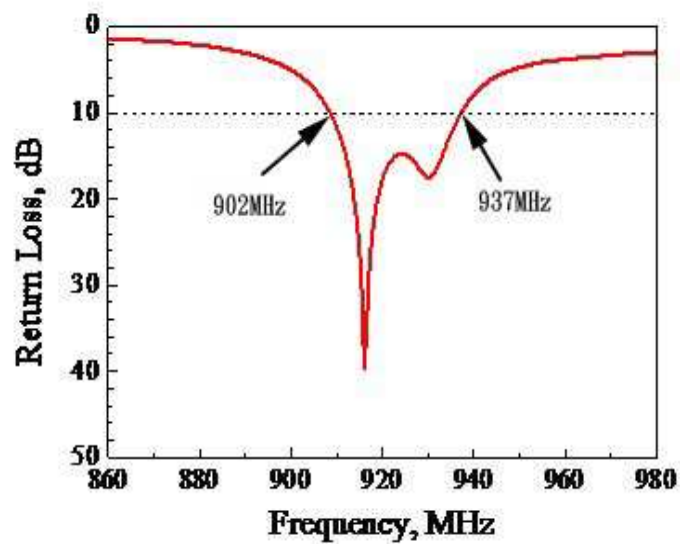
具槽孔之耦合饋入圓極化天線結構圖



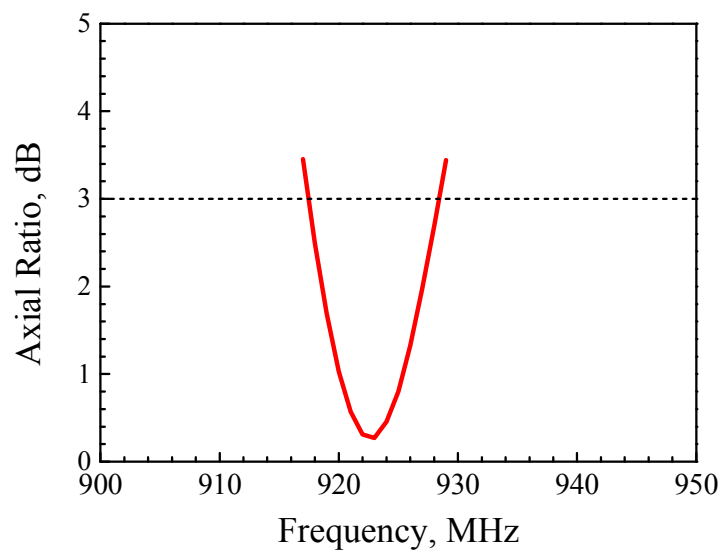
Specification:

Frequency Range (Hz)	902~928MHz
Impedance (Ω)	50
Return Loss (\leq)	10
Gain (dBic)	3.5 ~ 4.0
Polarization	LHCP
Axial Ratio (< 3dB)	922~928MHz
Radiation Pattern	Boresight Direction
Dim (mm)	60*60*15

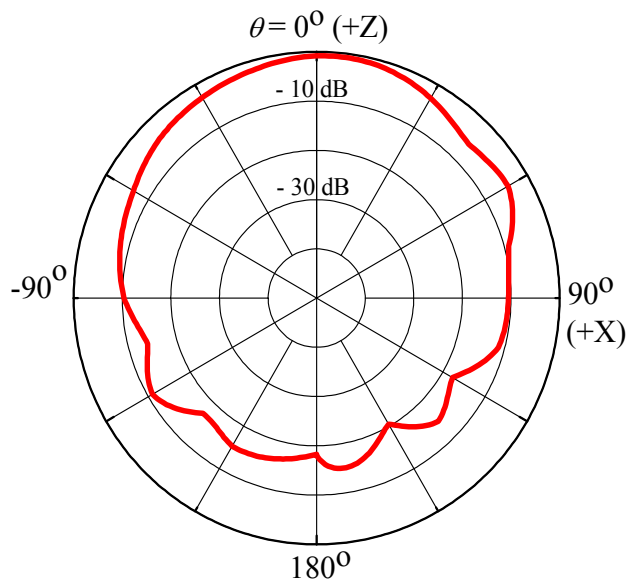
A. Return Loss < 10 dB



Axial Ratio < 3 dB



B. XZ-plane Beam width $< 3\text{dB}$ ($-30^\circ - 30^\circ$)



C. YZ-plane Beam width $< 3\text{dB}$ ($-30^\circ - 30^\circ$)

