

Appendix C – Highest Test Plots

Test Date : 2024-01-19 | Ambient Temp : 22.5 °C | Tissue Temp : 22.1 °C

Test Mode

1_WCDMA Band II_RMC12.2Kbps_Rear Face_0mm_Ch9262_Ant Main_P-Sensor w/

Device Under Test Properties

| Manufacturer or Brand | Model No. or Code Name | Sample No. or IMEI | DUT Type |
|-----------------------|------------------------|--------------------|----------|
| Telit | LN920A12-WW | A006 | Tablet |

Exposure Conditions

| Phantom Section | Band | Group, UID | Frequency [MHz], Channel Number | Conversion Factor | TSL Conductivity [S/m] | TSL Permittivity |
|-----------------|--------|--------------------|---------------------------------|-------------------|------------------------|------------------|
| Flat | Band 2 | WCDMA, 10011 - CAC | 1852.400, 9262 | 7.7 | 1.40 | 40.4 |

Hardware Setup

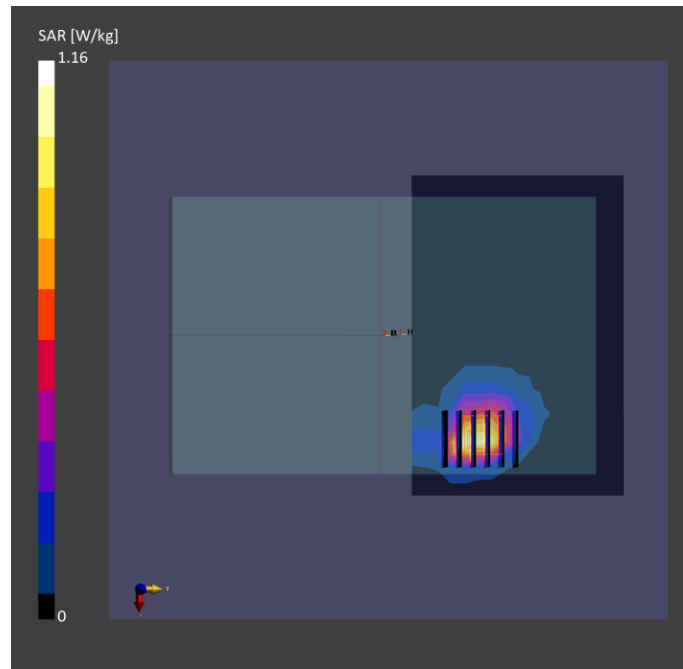
| Phantom | Tissue Simulating Liquid | Probe Calibration Date | DAE Calibration Date |
|------------------------------------|--------------------------|------------------------------|--------------------------|
| ELI V8.0 (20deg probe tilt) - 2141 | HBBL-600-10000 | EX3DV4 - SN7737 / 2023-06-05 | DAE4 Sn1743 / 2023-08-17 |

Scan Setup

| | Area Scan | Zoom Scan |
|---------------------|---------------|--------------------|
| Grid Extents [mm] | 180.0 x 120.0 | 32.0 x 32.0 x 30.0 |
| Grid Steps [mm] | 15.0 x 15.0 | 8.0 x 8.0 x 5.0 |
| Sensor Surface [mm] | 3.0 | 1.4 |
| Graded Grid | N/A | Yes |
| Grading Ratio | N/A | 1.4 |

Measurement Results

| | Area Scan | Zoom Scan |
|--------------------|---------------|---------------|
| psSAR-1g [W/kg] | 0.916 | 1.09 |
| psSAR-10g [W/kg] | 0.491 | 0.515 |
| Power Drift [dB] | | -0.13 |
| TSL Correction | Positive only | Positive only |
| M2 / M1 [%] | | 47.1 |
| Dist 3dB Peak [mm] | | 9.4 |



Test Date : 2024-01-19 | Ambient Temp : 22.5 °C | Tissue Temp : 22.1 °C

Test Mode

2_WCDMA Band IV_RMC12.2Kbps_Rear Face_Omm_Ch1312_Ant Main_P-Sensor w/

Device Under Test Properties

| Manufacturer or Brand | Model No. or Code Name | Sample No. or IMEI | DUT Type |
|-----------------------|------------------------|--------------------|----------|
| Telit | LN920A12-WW | A006 | Tablet |

Exposure Conditions

| Phantom Section | Band | Group, UID | Frequency [MHz], Channel Number | Conversion Factor | TSL Conductivity [S/m] | TSL Permittivity |
|-----------------|--------|--------------------|---------------------------------|-------------------|------------------------|------------------|
| Flat | Band 4 | WCDMA, 10011 - CAC | 1712.400, 1312 | 8.03 | 1.32 | 40.7 |

Hardware Setup

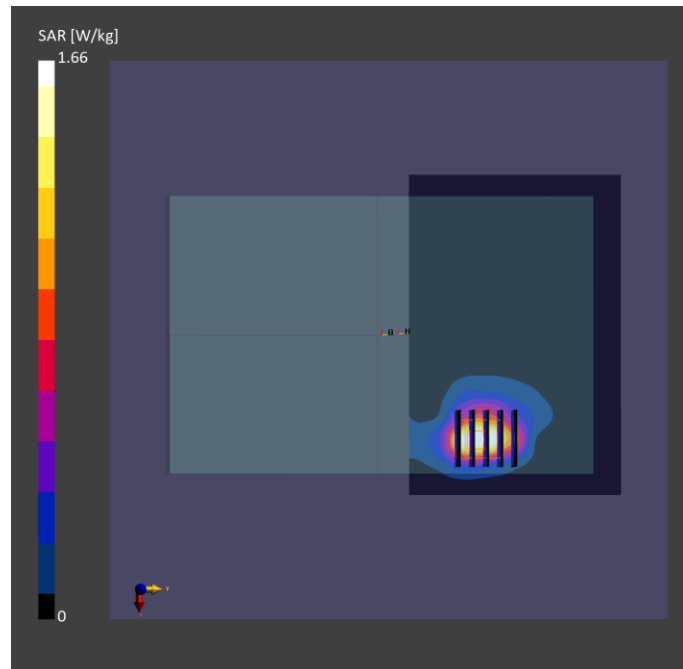
| Phantom | Tissue Simulating Liquid | Probe Calibration Date | DAE Calibration Date |
|------------------------------------|--------------------------|------------------------------|--------------------------|
| ELI V8.0 (20deg probe tilt) - 2141 | HBBL-600-10000 | EX3DV4 - SN7737 2023-06-05 | DAE4 Sn1743 2023-08-17 |

Scan Setup

| | Area Scan | Zoom Scan |
|---------------------|---------------|--------------------|
| Grid Extents [mm] | 180.0 x 120.0 | 32.0 x 32.0 x 30.0 |
| Grid Steps [mm] | 15.0 x 15.0 | 8.0 x 8.0 x 5.0 |
| Sensor Surface [mm] | 3.0 | 1.4 |
| Graded Grid | N/A | Yes |
| Grading Ratio | N/A | 1.4 |

Measurement Results

| | Area Scan | Zoom Scan |
|--------------------|---------------|---------------|
| psSAR-1g [W/kg] | 0.990 | 1.14 |
| psSAR-10g [W/kg] | 0.581 | 0.601 |
| Power Drift [dB] | | -0.11 |
| TSL Correction | Positive only | Positive only |
| M2 / M1 [%] | | 56.0 |
| Dist 3dB Peak [mm] | | 8.4 |



Test Date : 2024-01-23 | Ambient Temp : 22.5 °C | Tissue Temp : 22.1 °C

Test Mode

3_WCDMA Band V_RMC12.2Kbps_Rear Face_0mm_Ch4233_Ant Main_P-Sensor w/

Device Under Test Properties

| Manufacturer or Brand | Model No. or Code Name | Sample No. or IMEI | DUT Type |
|-----------------------|------------------------|--------------------|----------|
| Telit | LN920A12-WW | A006 | Tablet |

Exposure Conditions

| Phantom Section | Band | Group, UID | Frequency [MHz], Channel Number | Conversion Factor | TSL Conductivity [S/m] | TSL Permittivity |
|-----------------|--------|--------------------|---------------------------------|-------------------|------------------------|------------------|
| Flat | Band 5 | WCDMA, 10011 - CAC | 846.600, 4233 | 9.12 | 0.939 | 42.2 |

Hardware Setup

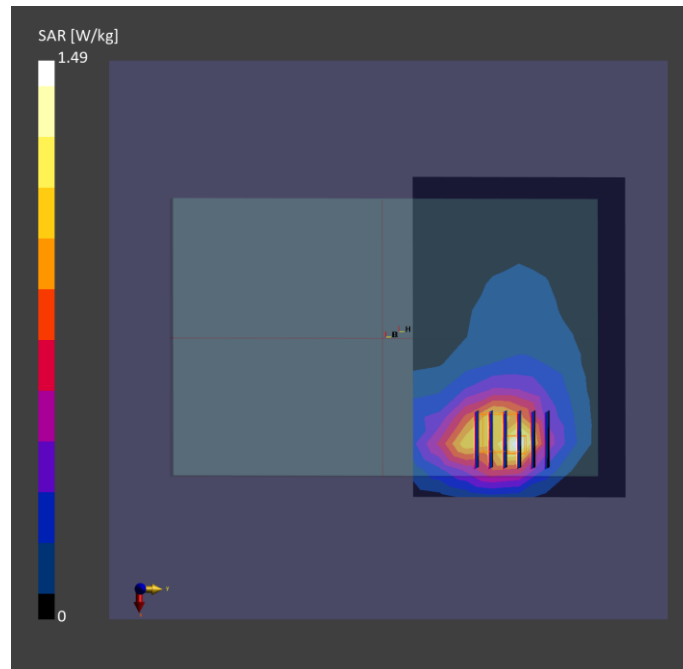
| Phantom | Tissue Simulating Liquid | Probe Calibration Date | DAE Calibration Date |
|------------------------------------|--------------------------|------------------------------|--------------------------|
| ELI V8.0 (20deg probe tilt) - 2141 | HBBL-600-10000 | EX3DV4 - SN7737 / 2023-06-05 | DAE4 Sn1743 / 2023-08-17 |

Scan Setup

| | Area Scan | Zoom Scan |
|---------------------|---------------|--------------------|
| Grid Extents [mm] | 180.0 x 120.0 | 32.0 x 32.0 x 30.0 |
| Grid Steps [mm] | 15.0 x 15.0 | 8.0 x 8.0 x 5.0 |
| Sensor Surface [mm] | 3.0 | 1.4 |
| Graded Grid | N/A | Yes |
| Grading Ratio | N/A | 1.4 |

Measurement Results

| | Area Scan | Zoom Scan |
|--------------------|---------------|---------------|
| psSAR-1g [W/kg] | 1.13 | 1.17 |
| psSAR-10g [W/kg] | 0.700 | 0.702 |
| Power Drift [dB] | | 0.04 |
| TSL Correction | Positive only | Positive only |
| M2 / M1 [%] | | 52.2 |
| Dist 3dB Peak [mm] | | 13.7 |



Test Date : 2024-01-21 | Ambient Temp : 22.7 °C | Tissue Temp : 22.1 °C

Test Mode

4_LTE Band 7_QPSK20M_Rear Face_0mm_Ch20850_1RB_Offset0_Ant Main_P-Sensor w/

Device Under Test Properties

| Manufacturer or Brand | Model No. or Code Name | Sample No. or IMEI | DUT Type |
|-----------------------|------------------------|--------------------|----------|
| Telit | LN920A12-WW | A006 | Tablet |

Exposure Conditions

| Phantom Section | Band | Group, UID | Frequency [MHz], Channel Number | Conversion Factor | TSL Conductivity [S/m] | TSL Permittivity |
|-----------------|--------|----------------------|---------------------------------|-------------------|------------------------|------------------|
| Flat | Band 7 | LTE-FDD, 10169 - CAF | 2510.000, 20850 | 7.17 | 1.86 | 41.3 |

Hardware Setup

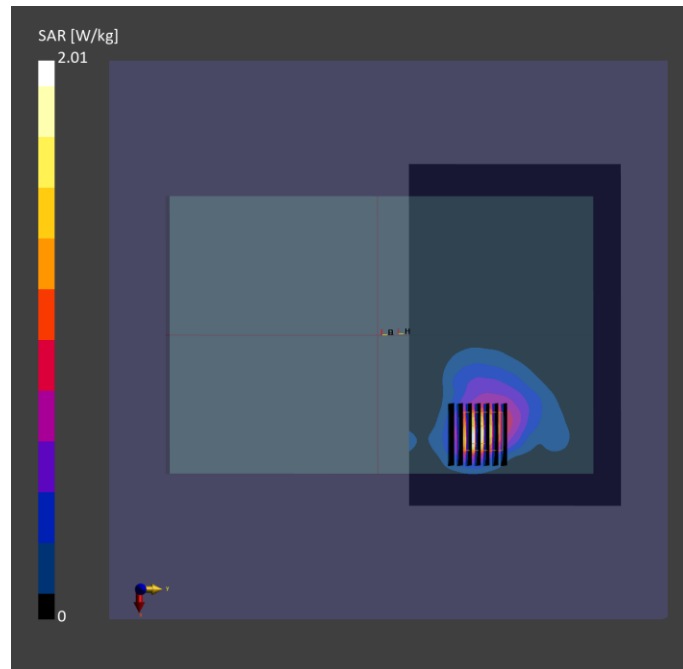
| Phantom | Tissue Simulating Liquid | Probe Calibration Date | DAE Calibration Date |
|------------------------------------|--------------------------|------------------------------|--------------------------|
| ELI V8.0 (20deg probe tilt) - 2141 | HBBL-600-10000 | EX3DV4 - SN7737 2023-06-05 | DAE4 Sn1743 2023-08-17 |

Scan Setup

| | Area Scan | Zoom Scan |
|---------------------|---------------|--------------------|
| Grid Extents [mm] | 192.0 x 120.0 | 30.0 x 30.0 x 30.0 |
| Grid Steps [mm] | 12.0 x 12.0 | 5.0 x 5.0 x 5.0 |
| Sensor Surface [mm] | 3.0 | 1.4 |
| Graded Grid | N/A | Yes |
| Grading Ratio | N/A | 1.4 |

Measurement Results

| | Area Scan | Zoom Scan |
|--------------------|---------------|---------------|
| psSAR-1g [W/kg] | 1.08 | 1.13 |
| psSAR-10g [W/kg] | 0.514 | 0.509 |
| Power Drift [dB] | | -0.12 |
| TSL Correction | Positive only | Positive only |
| M2 / M1 [%] | | 60.2 |
| Dist 3dB Peak [mm] | | 8.3 |



Test Date : 2024-01-20 | Ambient Temp : 22.4 °C | Tissue Temp : 21.9 °C

Test Mode

5_LTE Band 12_QPSK10M_Rear Face_Ch23130_1RB_Offset0_Ant Main_P-Sensor w/

Device Under Test Properties

| Manufacturer or Brand | Model No. or Code Name | Sample No. or IMEI | DUT Type |
|-----------------------|------------------------|--------------------|----------|
| Telit | LN920A12-WW | A006 | Tablet |

Exposure Conditions

| Phantom Section | Band | Group, UID | Frequency [MHz], Channel Number | Conversion Factor | TSL Conductivity [S/m] | TSL Permittivity |
|-----------------|---------|----------------------|---------------------------------|-------------------|------------------------|------------------|
| Flat | Band 12 | LTE-FDD, 10175 - CAH | 711.000, 23130 | 9.22 | 0.870 | 43.1 |

Hardware Setup

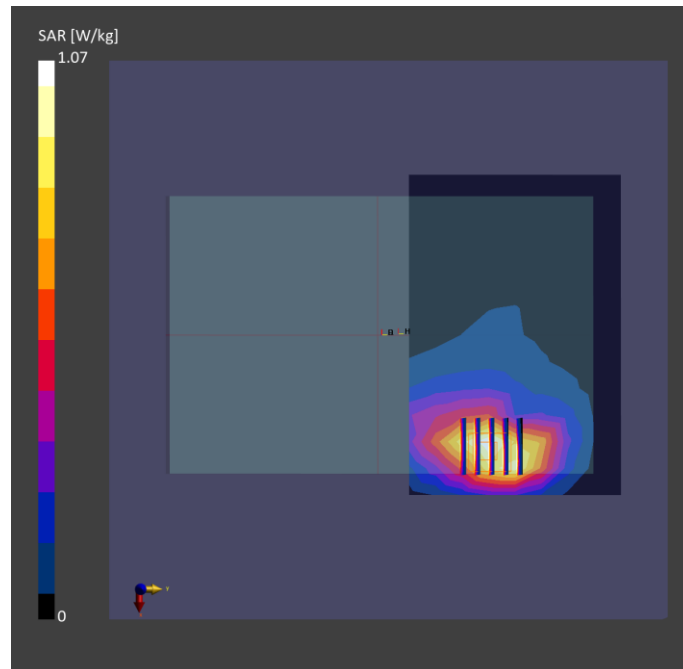
| Phantom | Tissue Simulating Liquid | Probe Calibration Date | DAE Calibration Date |
|------------------------------------|--------------------------|------------------------------|--------------------------|
| ELI V8.0 (20deg probe tilt) - 2141 | HBBL-600-10000 | EX3DV4 - SN7737 2023-06-05 | DAE4 Sn1743 2023-08-17 |

Scan Setup

| | Area Scan | Zoom Scan |
|---------------------|---------------|--------------------|
| Grid Extents [mm] | 180.0 x 120.0 | 32.0 x 32.0 x 30.0 |
| Grid Steps [mm] | 15.0 x 15.0 | 8.0 x 8.0 x 5.0 |
| Sensor Surface [mm] | 3.0 | 1.4 |
| Graded Grid | N/A | Yes |
| Grading Ratio | N/A | 1.4 |

Measurement Results

| | Area Scan | Zoom Scan |
|--------------------|---------------|---------------|
| psSAR-1g [W/kg] | 0.997 | 1.07 |
| psSAR-10g [W/kg] | 0.689 | 0.711 |
| Power Drift [dB] | | 0.09 |
| TSL Correction | Positive only | Positive only |
| M2 / M1 [%] | | 56.8 |
| Dist 3dB Peak [mm] | | 11.6 |



Test Date : 2024-01-23 | Ambient Temp : 22.5 °C | Tissue Temp : 22.1 °C

Test Mode

6_LTE Band 13_QPSK10M_Rear Face_0mm_Ch23230_1RB_Offset0_Ant Main_P-Sensor w/

Device Under Test Properties

| Manufacturer or Brand | Model No. or Code Name | Sample No. or IMEI | DUT Type |
|-----------------------|------------------------|--------------------|----------|
| Telit | LN920A12-WW | A006 | Tablet |

Exposure Conditions

| Phantom Section | Band | Group, UID | Frequency [MHz], Channel Number | Conversion Factor | TSL Conductivity [S/m] | TSL Permittivity |
|-----------------|---------|----------------------|---------------------------------|-------------------|------------------------|------------------|
| Flat | Band 13 | LTE-FDD, 10175 - CAH | 782.000, 23230 | 9.22 | 0.923 | 42.4 |

Hardware Setup

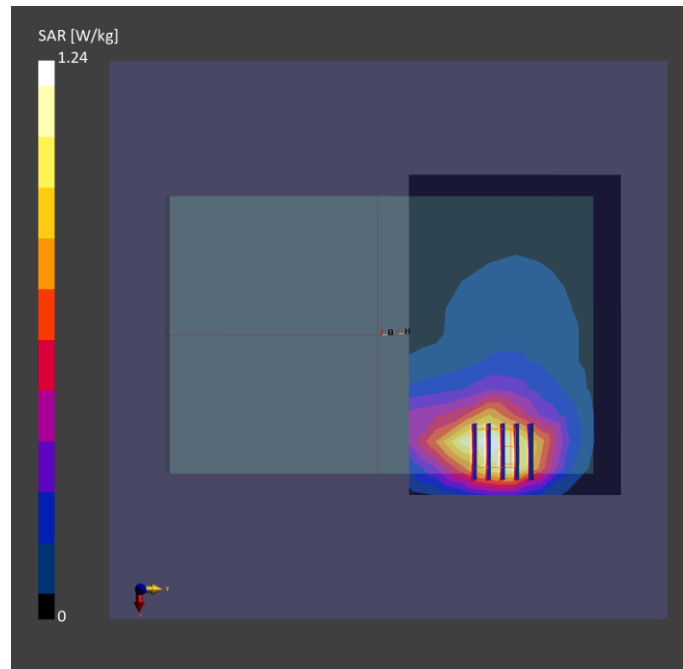
| Phantom | Tissue Simulating Liquid | Probe Calibration Date | DAE Calibration Date |
|------------------------------------|--------------------------|------------------------------|--------------------------|
| ELI V8.0 (20deg probe tilt) - 2141 | HBBL-600-10000 | EX3DV4 - SN7737 2023-06-05 | DAE4 Sn1743 2023-08-17 |

Scan Setup

| | Area Scan | Zoom Scan |
|---------------------|---------------|--------------------|
| Grid Extents [mm] | 180.0 x 120.0 | 32.0 x 32.0 x 30.0 |
| Grid Steps [mm] | 15.0 x 15.0 | 8.0 x 8.0 x 5.0 |
| Sensor Surface [mm] | 3.0 | 1.4 |
| Graded Grid | N/A | Yes |
| Grading Ratio | N/A | 1.4 |

Measurement Results

| | Area Scan | Zoom Scan |
|--------------------|---------------|---------------|
| psSAR-1g [W/kg] | 1.12 | 1.19 |
| psSAR-10g [W/kg] | 0.758 | 0.738 |
| Power Drift [dB] | | 0.01 |
| TSL Correction | Positive only | Positive only |
| M2 / M1 [%] | | 59.0 |
| Dist 3dB Peak [mm] | | 11.4 |



Test Date : 2024-01-23 | Ambient Temp : 22.5 °C | Tissue Temp : 22.1 °C

Test Mode

7_LTE Band 14_QPSK10M_Rear Face_0mm_Ch23330_1RB_Offset0_Ant Main_P-Sensor w/

Device Under Test Properties

| Manufacturer or Brand | Model No. or Code Name | Sample No. or IMEI | DUT Type |
|-----------------------|------------------------|--------------------|----------|
| Telit | LN920A12-WW | A006 | Tablet |

Exposure Conditions

| Phantom Section | Band | Group, UID | Frequency [MHz], Channel Number | Conversion Factor | TSL Conductivity [S/m] | TSL Permittivity |
|-----------------|---------|----------------------|---------------------------------|-------------------|------------------------|------------------|
| Flat | Band 14 | LTE-FDD, 10175 - CAH | 793.000, 23330 | 9.22 | 0.927 | 42.3 |

Hardware Setup

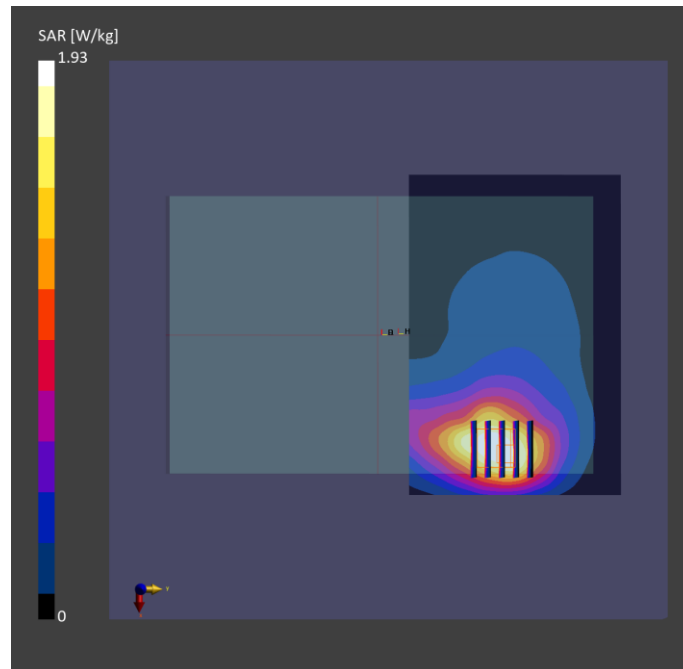
| Phantom | Tissue Simulating Liquid | Probe Calibration Date | DAE Calibration Date |
|------------------------------------|--------------------------|------------------------------|--------------------------|
| ELI V8.0 (20deg probe tilt) - 2141 | HBBL-600-10000 | EX3DV4 - SN7737 2023-06-05 | DAE4 Sn1743 2023-08-17 |

Scan Setup

| | Area Scan | Zoom Scan |
|---------------------|---------------|--------------------|
| Grid Extents [mm] | 180.0 x 120.0 | 32.0 x 32.0 x 30.0 |
| Grid Steps [mm] | 15.0 x 15.0 | 8.0 x 8.0 x 5.0 |
| Sensor Surface [mm] | 3.0 | 1.4 |
| Graded Grid | N/A | Yes |
| Grading Ratio | N/A | 1.4 |

Measurement Results

| | Area Scan | Zoom Scan |
|--------------------|---------------|---------------|
| psSAR-1g [W/kg] | 1.09 | 1.19 |
| psSAR-10g [W/kg] | 0.735 | 0.731 |
| Power Drift [dB] | | 0.02 |
| TSL Correction | Positive only | Positive only |
| M2 / M1 [%] | | 58.1 |
| Dist 3dB Peak [mm] | | 12.8 |



Test Date : 2024-01-19 | Ambient Temp : 22.5 °C | Tissue Temp : 22.1 °C

Test Mode

8_LTE Band 25_QPSK20M_Rear Face_0mm_Ch26140_1RB_Offset0_Ant Main_P-Sensor w/

Device Under Test Properties

| Manufacturer or Brand | Model No. or Code Name | Sample No. or IMEI | DUT Type |
|-----------------------|------------------------|--------------------|----------|
| Telit | LN920A12-WW | A006 | Tablet |

Exposure Conditions

| Phantom Section | Band | Group, UID | Frequency [MHz], Channel Number | Conversion Factor | TSL Conductivity [S/m] | TSL Permittivity |
|-----------------|---------|----------------------|---------------------------------|-------------------|------------------------|------------------|
| Flat | Band 25 | LTE-FDD, 10169 - CAF | 1860.000, 26140 | 7.7 | 1.40 | 40.4 |

Hardware Setup

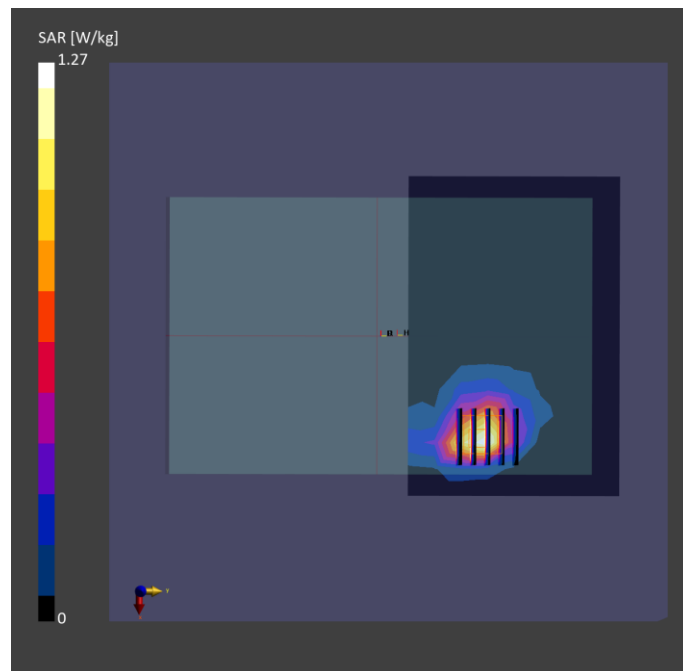
| Phantom | Tissue Simulating Liquid | Probe Calibration Date | DAE Calibration Date |
|------------------------------------|--------------------------|------------------------------|--------------------------|
| ELI V8.0 (20deg probe tilt) - 2141 | HBBL-600-10000 | EX3DV4 - SN7737 2023-06-05 | DAE4 Sn1743 2023-08-17 |

Scan Setup

| | Area Scan | Zoom Scan |
|---------------------|---------------|--------------------|
| Grid Extents [mm] | 180.0 x 120.0 | 32.0 x 32.0 x 30.0 |
| Grid Steps [mm] | 15.0 x 15.0 | 8.0 x 8.0 x 5.0 |
| Sensor Surface [mm] | 3.0 | 1.4 |
| Graded Grid | N/A | Yes |
| Grading Ratio | N/A | 1.4 |

Measurement Results

| | Area Scan | Zoom Scan |
|--------------------|---------------|---------------|
| psSAR-1g [W/kg] | 1.08 | 1.19 |
| psSAR-10g [W/kg] | 0.581 | 0.594 |
| Power Drift [dB] | | 0.01 |
| TSL Correction | Positive only | Positive only |
| M2 / M1 [%] | | 57.4 |
| Dist 3dB Peak [mm] | | 9.6 |



Test Date : 2024-01-23 | Ambient Temp : 22.5 °C | Tissue Temp : 22.1 °C

Test Mode

9_LTE Band 26_QPSK15M_Rear Face_0mm_Ch26765_1RB_Offset0_Ant Main_P-Sensor w/o

Device Under Test Properties

| Manufacturer or Brand | Model No. or Code Name | Sample No. or IMEI | DUT Type |
|-----------------------|------------------------|--------------------|----------|
| Telit | LN920A12-WW | A006 | Tablet |

Exposure Conditions

| Phantom Section | Band | Group, UID | Frequency [MHz], Channel Number | Conversion Factor | TSL Conductivity [S/m] | TSL Permittivity |
|-----------------|---------|----------------------|---------------------------------|-------------------|------------------------|------------------|
| Flat | Band 26 | LTE-FDD, 10181 - CAF | 821.500, 26765 | 9.12 | 0.935 | 42.2 |

Hardware Setup

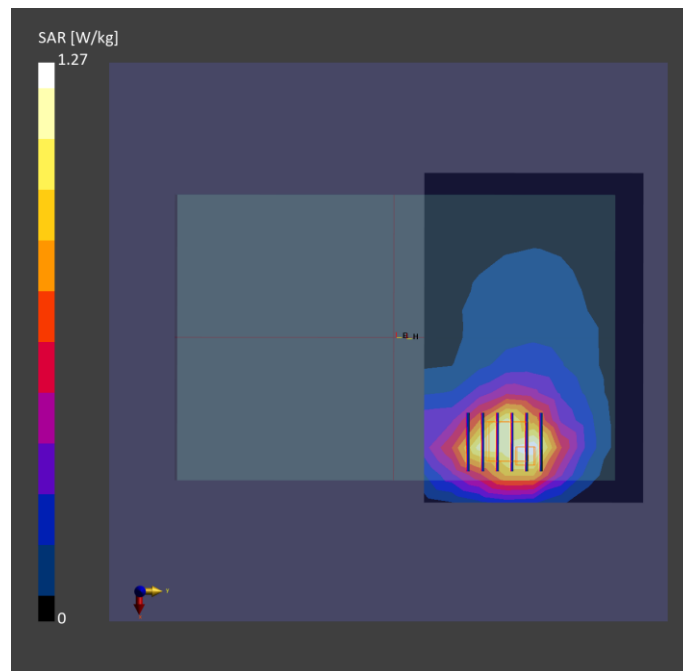
| Phantom | Tissue Simulating Liquid | Probe Calibration Date | DAE Calibration Date |
|------------------------------------|--------------------------|------------------------------|--------------------------|
| ELI V8.0 (20deg probe tilt) - 2141 | HBBL-600-10000 | EX3DV4 - SN7737 2023-06-05 | DAE4 Sn1743 2023-08-17 |

Scan Setup

| | Area Scan | Zoom Scan |
|---------------------|---------------|--------------------|
| Grid Extents [mm] | 180.0 x 120.0 | 32.0 x 32.0 x 30.0 |
| Grid Steps [mm] | 15.0 x 15.0 | 8.0 x 8.0 x 5.0 |
| Sensor Surface [mm] | 3.0 | 1.4 |
| Graded Grid | N/A | Yes |
| Grading Ratio | N/A | 1.4 |

Measurement Results

| | Area Scan | Zoom Scan |
|--------------------|---------------|---------------|
| psSAR-1g [W/kg] | 1.12 | 1.18 |
| psSAR-10g [W/kg] | 0.752 | 0.737 |
| Power Drift [dB] | | 0.01 |
| TSL Correction | Positive only | Positive only |
| M2 / M1 [%] | | 54.8 |
| Dist 3dB Peak [mm] | | 15.8 |



Test Date : 2024-01-21 | Ambient Temp : 22.7 °C | Tissue Temp : 22.1 °C

Test Mode

10_LTE Band 38_QPSK20M_Rear Face_0mm_Ch37850_1RB_Offset0_Ant Main_P-Sensor w/

Device Under Test Properties

| Manufacturer or Brand | Model No. or Code Name | Sample No. or IMEI | DUT Type |
|-----------------------|------------------------|--------------------|----------|
| Telit | LN920A12-WW | A006 | Tablet |

Exposure Conditions

| Phantom Section | Band | Group, UID | Frequency [MHz], Channel Number | Conversion Factor | TSL Conductivity [S/m] | TSL Permittivity |
|-----------------|---------|----------------------|---------------------------------|-------------------|------------------------|------------------|
| Flat | Band 38 | LTE-TDD, 10172 - CAH | 2580.000, 37850 | 7.17 | 1.92 | 41.3 |

Hardware Setup

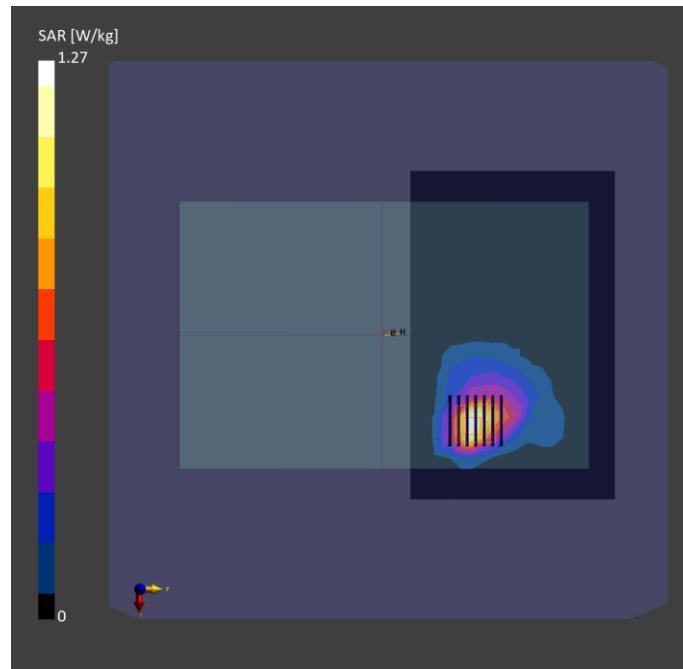
| Phantom | Tissue Simulating Liquid | Probe Calibration Date | DAE Calibration Date |
|------------------------------------|--------------------------|------------------------------|--------------------------|
| ELI V8.0 (20deg probe tilt) - 2141 | HBBL-600-10000 | EX3DV4 - SN7737 2023-06-05 | DAE4 Sn1743 2023-08-17 |

Scan Setup

| | Area Scan | Zoom Scan |
|---------------------|---------------|--------------------|
| Grid Extents [mm] | 192.0 x 120.0 | 30.0 x 30.0 x 30.0 |
| Grid Steps [mm] | 12.0 x 12.0 | 5.0 x 5.0 x 5.0 |
| Sensor Surface [mm] | 3.0 | 1.4 |
| Graded Grid | N/A | Yes |
| Grading Ratio | N/A | 1.4 |

Measurement Results

| | Area Scan | Zoom Scan |
|--------------------|---------------|---------------|
| psSAR-1g [W/kg] | 1.05 | 1.12 |
| psSAR-10g [W/kg] | 0.504 | 0.503 |
| Power Drift [dB] | | 0.01 |
| TSL Correction | Positive only | Positive only |
| M2 / M1 [%] | | 59.5 |
| Dist 3dB Peak [mm] | | 9.9 |



Test Date : 2024-01-24 | Ambient Temp : 22.4 °C | Tissue Temp : 22.2 °C

Test Mode

11_LTE Band 41_QPSK20M_Rear Face_0mm_Ch40620_1RB_Offset0_Ant Main_P-Sensor w/

Device Under Test Properties

| Manufacturer or Brand | Model No. or Code Name | Sample No. or IMEI | DUT Type |
|-----------------------|------------------------|--------------------|----------|
| Telit | LN920A12-WW | A006 | Tablet |

Exposure Conditions

| Phantom Section | Band | Group, UID | Frequency [MHz], Channel Number | Conversion Factor | TSL Conductivity [S/m] | TSL Permittivity |
|-----------------|---------|----------------------|---------------------------------|-------------------|------------------------|------------------|
| Flat | Band 41 | LTE-TDD, 10172 - CAH | 2593.000, 40620 | 7.17 | 1.92 | 40.4 |

Hardware Setup

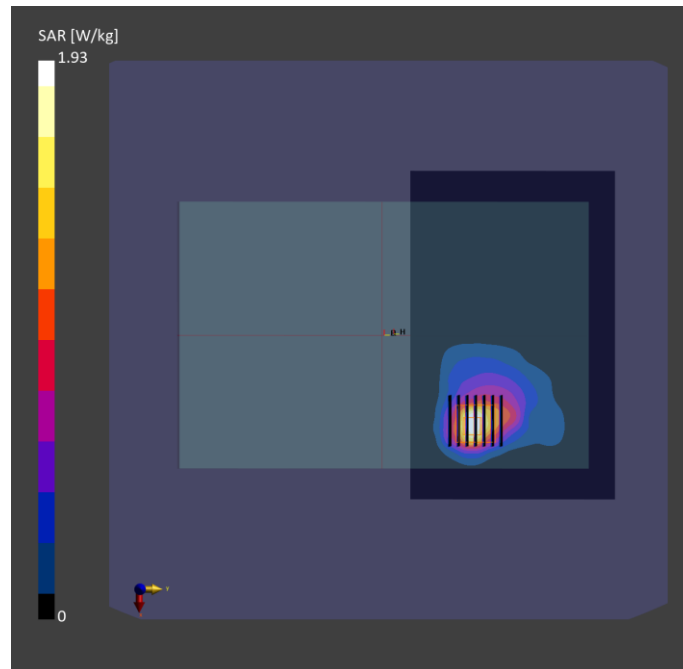
| Phantom | Tissue Simulating Liquid | Probe Calibration Date | DAE Calibration Date |
|------------------------------------|--------------------------|------------------------------|--------------------------|
| ELI V8.0 (20deg probe tilt) - 2141 | HBBL-600-10000 | EX3DV4 - SN7737 2023-06-05 | DAE4 Sn1743 2023-08-17 |

Scan Setup

| | Area Scan | Zoom Scan |
|---------------------|---------------|--------------------|
| Grid Extents [mm] | 192.0 x 120.0 | 30.0 x 30.0 x 30.0 |
| Grid Steps [mm] | 12.0 x 12.0 | 5.0 x 5.0 x 5.0 |
| Sensor Surface [mm] | 3.0 | 1.4 |
| Graded Grid | N/A | Yes |
| Grading Ratio | N/A | 1.4 |

Measurement Results

| | Area Scan | Zoom Scan |
|--------------------|---------------|---------------|
| psSAR-1g [W/kg] | 1.04 | 1.11 |
| psSAR-10g [W/kg] | 0.501 | 0.498 |
| Power Drift [dB] | | -0.01 |
| TSL Correction | Positive only | Positive only |
| M2 / M1 [%] | | 59.3 |
| Dist 3dB Peak [mm] | | 9.9 |



Test Date : 2024-01-22 | Ambient Temp : 22.6 °C | Tissue Temp : 22.4 °C

Test Mode

12_LTE Band 42_QPSK20M_Rear Face_0mm_Ch43490_1RB_Offset0_Ant Main_P-Sensor w/

Device Under Test Properties

| Manufacturer or Brand | Model No. or Code Name | Sample No. or IMEI | DUT Type |
|-----------------------|------------------------|--------------------|----------|
| Telit | LN920A12-WW | A006 | Tablet |

Exposure Conditions

| Phantom Section | Band | Group, UID | Frequency [MHz], Channel Number | Conversion Factor | TSL Conductivity [S/m] | TSL Permittivity |
|-----------------|---------|----------------------|---------------------------------|-------------------|------------------------|------------------|
| Flat | Band 42 | LTE-TDD, 10172 - CAH | 3590.000, 43490 | 6.87 | 2.80 | 39.4 |

Hardware Setup

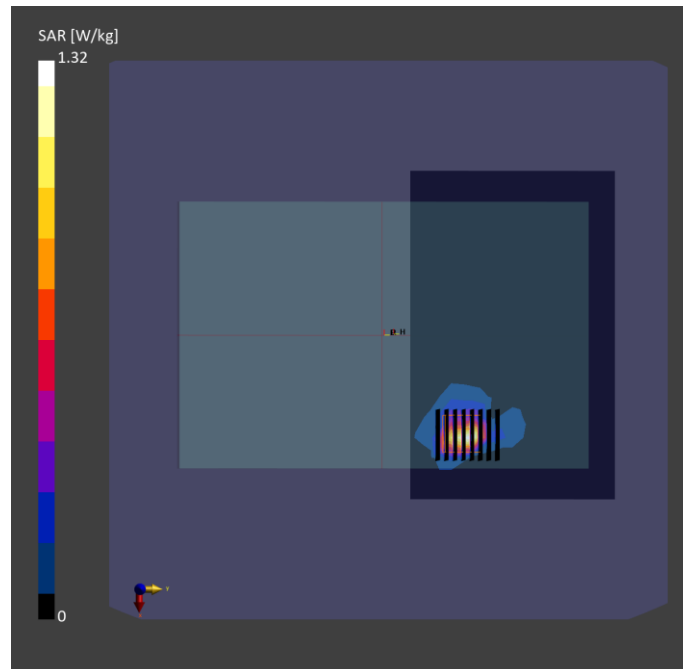
| Phantom | Tissue Simulating Liquid | Probe Calibration Date | DAE Calibration Date |
|------------------------------------|--------------------------|------------------------------|--------------------------|
| ELI V8.0 (20deg probe tilt) - 2141 | HBBL-600-10000 | EX3DV4 - SN7737 2023-06-05 | DAE4 Sn1743 2023-08-17 |

Scan Setup

| | Area Scan | Zoom Scan |
|---------------------|---------------|--------------------|
| Grid Extents [mm] | 192.0 x 120.0 | 30.0 x 30.0 x 28.0 |
| Grid Steps [mm] | 12.0 x 12.0 | 5.0 x 5.0 x 2.5 |
| Sensor Surface [mm] | 3.0 | 1.4 |
| Graded Grid | N/A | Yes |
| Grading Ratio | N/A | 1.4 |

Measurement Results

| | Area Scan | Zoom Scan |
|--------------------|---------------|---------------|
| psSAR-1g [W/kg] | 0.929 | 1.13 |
| psSAR-10g [W/kg] | 0.342 | 0.364 |
| Power Drift [dB] | | 0.09 |
| TSL Correction | Positive only | Positive only |
| M2 / M1 [%] | | 54.0 |
| Dist 3dB Peak [mm] | | 5.4 |



Test Date : 2024-01-22 | Ambient Temp : 22.6 °C | Tissue Temp : 22.4 °C

Test Mode

13_LTE Band 43_QPSK20M_Rear Face_0mm_Ch44190_1RB_Offset0_Ant Main_P-Sensor w/

Device Under Test Properties

| Manufacturer or Brand | Model No. or Code Name | Sample No. or IMEI | DUT Type |
|-----------------------|------------------------|--------------------|----------|
| Telit | LN920A12-WW | A006 | Tablet |

Exposure Conditions

| Phantom Section | Band | Group, UID | Frequency [MHz], Channel Number | Conversion Factor | TSL Conductivity [S/m] | TSL Permittivity |
|-----------------|---------|----------------------|---------------------------------|-------------------|------------------------|------------------|
| Flat | Band 43 | LTE-TDD, 10172 - CAH | 3660.000, 44190 | 6.8 | 2.87 | 39.3 |

Hardware Setup

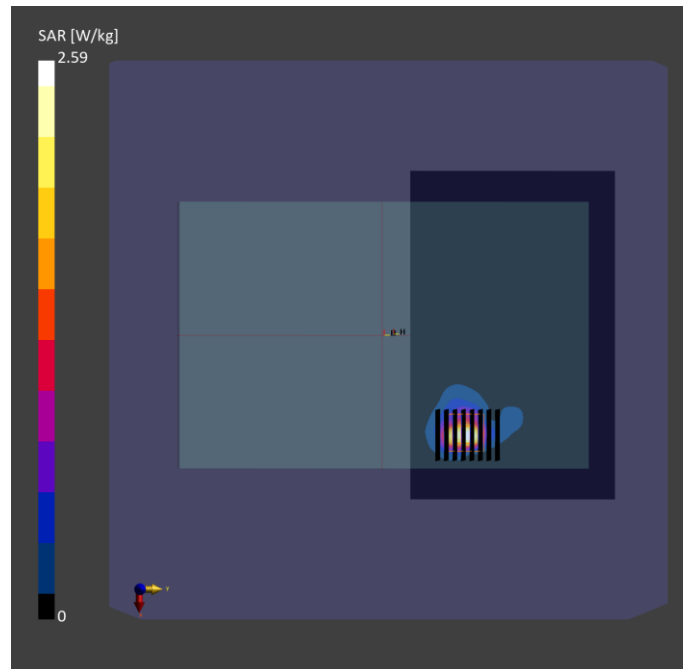
| Phantom | Tissue Simulating Liquid | Probe Calibration Date | DAE Calibration Date |
|------------------------------------|--------------------------|------------------------------|--------------------------|
| ELI V8.0 (20deg probe tilt) - 2141 | HBBL-600-10000 | EX3DV4 - SN7737 / 2023-06-05 | DAE4 Sn1743 / 2023-08-17 |

Scan Setup

| | Area Scan | Zoom Scan |
|---------------------|---------------|--------------------|
| Grid Extents [mm] | 192.0 x 120.0 | 30.0 x 30.0 x 28.0 |
| Grid Steps [mm] | 12.0 x 12.0 | 5.0 x 5.0 x 2.5 |
| Sensor Surface [mm] | 3.0 | 1.4 |
| Graded Grid | N/A | Yes |
| Grading Ratio | N/A | 1.4 |

Measurement Results

| | Area Scan | Zoom Scan |
|--------------------|---------------|---------------|
| psSAR-1g [W/kg] | 0.980 | 1.13 |
| psSAR-10g [W/kg] | 0.322 | 0.347 |
| Power Drift [dB] | | 0.07 |
| TSL Correction | Positive only | Positive only |
| M2 / M1 [%] | | 56.6 |
| Dist 3dB Peak [mm] | | 5.7 |



Test Date : 2024-01-22 | Ambient Temp : 22.6 °C | Tissue Temp : 22.4 °C

Test Mode

14_LTE Band 48_QPSK20M_Rear Face_0mm_Ch56207_1RB_Offset0_Ant Main_P-Sensor w/

Device Under Test Properties

| Manufacturer or Brand | Model No. or Code Name | Sample No. or IMEI | DUT Type |
|-----------------------|------------------------|--------------------|----------|
| Telit | LN920A12-WW | A006 | Tablet |

Exposure Conditions

| Phantom Section | Band | Group, UID | Frequency [MHz], Channel Number | Conversion Factor | TSL Conductivity [S/m] | TSL Permittivity |
|-----------------|---------|----------------------|---------------------------------|-------------------|------------------------|------------------|
| Flat | Band 48 | LTE-TDD, 10172 - CAH | 3646.700, 56207 | 6.8 | 2.86 | 39.3 |

Hardware Setup

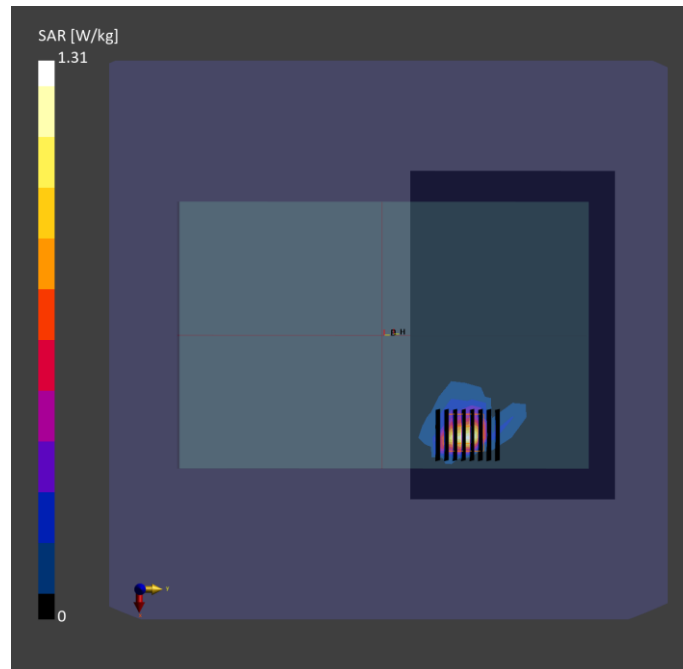
| Phantom | Tissue Simulating Liquid | Probe Calibration Date | DAE Calibration Date |
|------------------------------------|--------------------------|------------------------------|--------------------------|
| ELI V8.0 (20deg probe tilt) - 2141 | HBBL-600-10000 | EX3DV4 - SN7737 / 2023-06-05 | DAE4 Sn1743 / 2023-08-17 |

Scan Setup

| | Area Scan | Zoom Scan |
|---------------------|---------------|--------------------|
| Grid Extents [mm] | 192.0 x 120.0 | 30.0 x 30.0 x 28.0 |
| Grid Steps [mm] | 12.0 x 12.0 | 5.0 x 5.0 x 2.5 |
| Sensor Surface [mm] | 3.0 | 1.4 |
| Graded Grid | N/A | Yes |
| Grading Ratio | N/A | 1.4 |

Measurement Results

| | Area Scan | Zoom Scan |
|--------------------|---------------|---------------|
| psSAR-1g [W/kg] | 0.962 | 1.12 |
| psSAR-10g [W/kg] | 0.307 | 0.316 |
| Power Drift [dB] | | 0.03 |
| TSL Correction | Positive only | Positive only |
| M2 / M1 [%] | | 56.5 |
| Dist 3dB Peak [mm] | | 5.7 |



Test Date : 2024-01-19 | Ambient Temp : 22.5 °C | Tissue Temp : 22.1 °C

Test Mode

15_LTE Band 66_QPSK20M_Rear Face_0mm_Ch132322_1RB_Offset0_Ant Main_P-Sensor w/

Device Under Test Properties

| Manufacturer or Brand | Model No. or Code Name | Sample No. or IMEI | DUT Type |
|-----------------------|------------------------|--------------------|----------|
| Telit | LN920A12-WW | A006 | Tablet |

Exposure Conditions

| Phantom Section | Band | Group, UID | Frequency [MHz], Channel Number | Conversion Factor | TSL Conductivity [S/m] | TSL Permittivity |
|-----------------|---------|----------------------|---------------------------------|-------------------|------------------------|------------------|
| Flat | Band 66 | LTE-FDD, 10169 - CAF | 1745.000, 132322 | 8.03 | 1.34 | 40.6 |

Hardware Setup

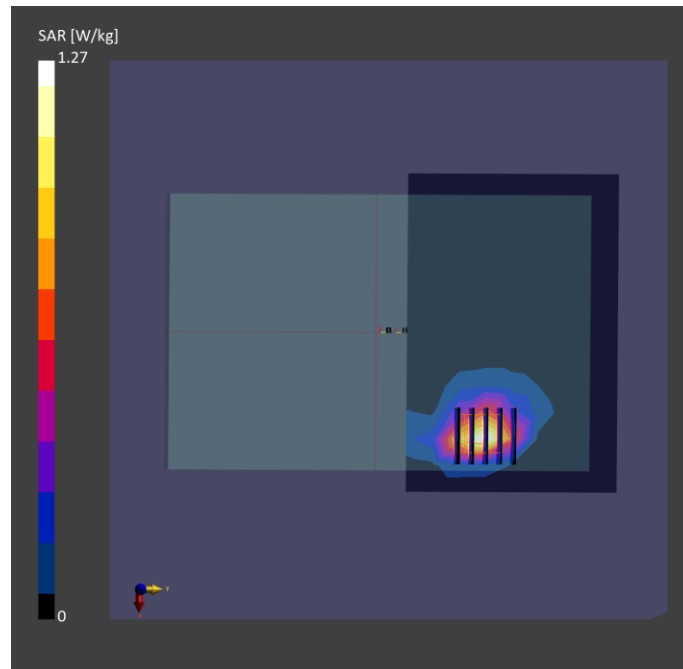
| Phantom | Tissue Simulating Liquid | Probe Calibration Date | DAE Calibration Date |
|------------------------------------|--------------------------|------------------------------|--------------------------|
| ELI V8.0 (20deg probe tilt) - 2141 | HBBL-600-10000 | EX3DV4 - SN7737 2023-06-05 | DAE4 Sn1743 2023-08-17 |

Scan Setup

| | Area Scan | Zoom Scan |
|---------------------|---------------|--------------------|
| Grid Extents [mm] | 180.0 x 120.0 | 32.0 x 32.0 x 30.0 |
| Grid Steps [mm] | 15.0 x 15.0 | 8.0 x 8.0 x 5.0 |
| Sensor Surface [mm] | 3.0 | 1.4 |
| Graded Grid | N/A | Yes |
| Grading Ratio | N/A | 1.4 |

Measurement Results

| | Area Scan | Zoom Scan |
|--------------------|---------------|---------------|
| psSAR-1g [W/kg] | 1.05 | 1.17 |
| psSAR-10g [W/kg] | 0.558 | 0.546 |
| Power Drift [dB] | | 0.01 |
| TSL Correction | Positive only | Positive only |
| M2 / M1 [%] | | 58.2 |
| Dist 3dB Peak [mm] | | 9.4 |



Test Date : 2024-01-20 | Ambient Temp : 22.4 °C | Tissue Temp : 21.9 °C

Test Mode

16_LTE Band 71_QPSK20M_Rear Face_0mm_Ch133322_1RB_Offset0_Ant Main_P-Sensor w/

Device Under Test Properties

| Manufacturer or Brand | Model No. or Code Name | Sample No. or IMEI | DUT Type |
|-----------------------|------------------------|--------------------|----------|
| Telit | LN920A12-WW | A006 | Tablet |

Exposure Conditions

| Phantom Section | Band | Group, UID | Frequency [MHz], Channel Number | Conversion Factor | TSL Conductivity [S/m] | TSL Permittivity |
|-----------------|---------|----------------------|---------------------------------|-------------------|------------------------|------------------|
| Flat | Band 71 | LTE-FDD, 10169 - CAF | 683.000, 133322 | 9.22 | 0.862 | 43.2 |

Hardware Setup

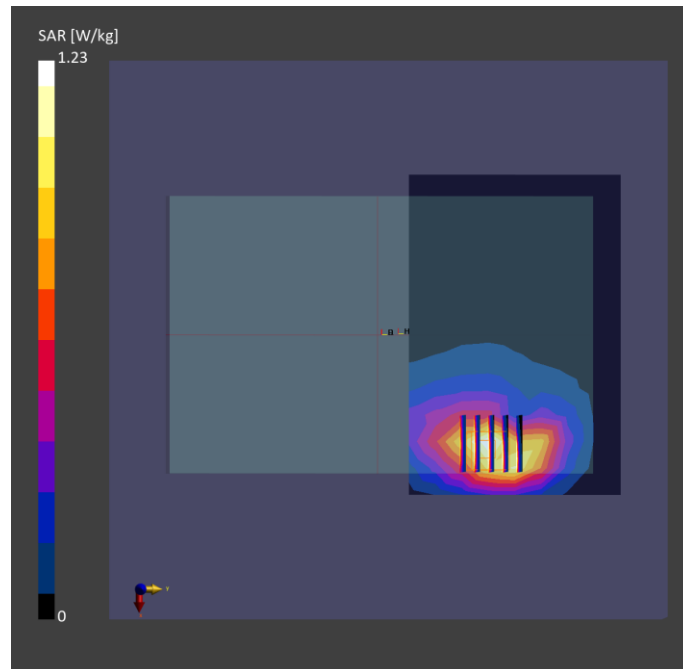
| Phantom | Tissue Simulating Liquid | Probe Calibration Date | DAE Calibration Date |
|------------------------------------|--------------------------|------------------------------|--------------------------|
| ELI V8.0 (20deg probe tilt) - 2141 | HBBL-600-10000 | EX3DV4 - SN7737 2023-06-05 | DAE4 Sn1743 2023-08-17 |

Scan Setup

| | Area Scan | Zoom Scan |
|---------------------|---------------|--------------------|
| Grid Extents [mm] | 180.0 x 120.0 | 32.0 x 32.0 x 30.0 |
| Grid Steps [mm] | 15.0 x 15.0 | 8.0 x 8.0 x 5.0 |
| Sensor Surface [mm] | 3.0 | 1.4 |
| Graded Grid | N/A | Yes |
| Grading Ratio | N/A | 1.4 |

Measurement Results

| | Area Scan | Zoom Scan |
|--------------------|---------------|---------------|
| psSAR-1g [W/kg] | 1.10 | 1.15 |
| psSAR-10g [W/kg] | 0.616 | 0.647 |
| Power Drift [dB] | | 0.04 |
| TSL Correction | Positive only | Positive only |
| M2 / M1 [%] | | 54.1 |
| Dist 3dB Peak [mm] | | 10.3 |



Test Date : 2024-01-17 | Ambient Temp : 22.6 °C | Tissue Temp : 22.3 °C

Test Mode

17_WLAN 2.4G_802.11n HT40_Rear Face_0mm_Ch3_Ant 1+2

Device Under Test Properties

| Manufacturer or Brand | Model No. or Code Name | Sample No. or IMEI | DUT Type |
|-----------------------|------------------------|--------------------|----------|
| Telit | LN920A12-WW | A006 | Tablet |

Exposure Conditions

| Phantom Section | Band | Group, UID | Frequency [MHz], Channel Number | Conversion Factor | TSL Conductivity [S/m] | TSL Permittivity |
|-----------------|-------------|-------------------|---------------------------------|-------------------|------------------------|------------------|
| Flat | WLAN 2.4GHz | WLAN, 10599 - AAC | 2422.000, 3 | 7.05 | 1.80 | 41.6 |

Hardware Setup

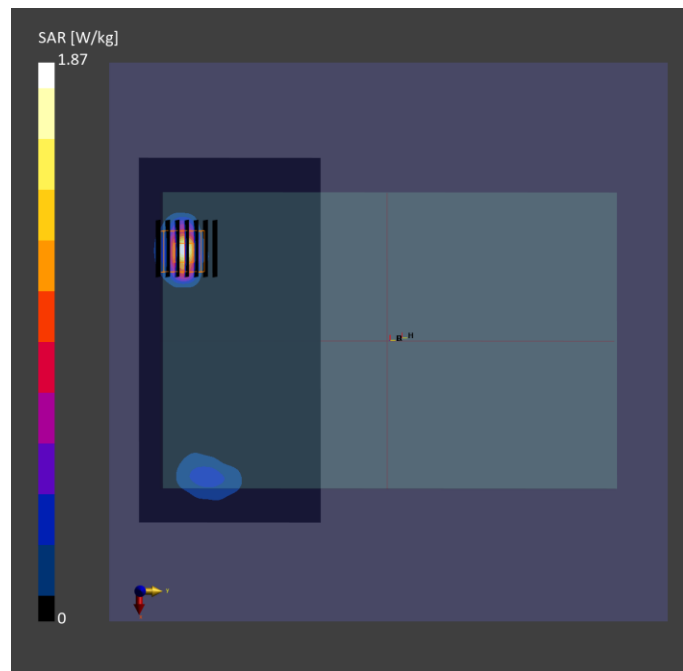
| Phantom | Tissue Simulating Liquid | Probe Calibration Date | DAE Calibration Date |
|------------------------------------|--------------------------|------------------------------|--------------------------|
| ELI V8.0 (20deg probe tilt) - 2141 | HBBL-600-10000 | EX3DV4 - SN7737 2023-06-05 | DAE4 Sn1743 2023-08-17 |

Scan Setup

| | Area Scan | Zoom Scan |
|---------------------|--------------|--------------------|
| Grid Extents [mm] | 192.0 x 96.0 | 30.0 x 30.0 x 30.0 |
| Grid Steps [mm] | 12.0 x 12.0 | 5.0 x 5.0 x 5.0 |
| Sensor Surface [mm] | 3.0 | 1.4 |
| Graded Grid | N/A | Yes |
| Grading Ratio | N/A | 1.4 |

Measurement Results

| | Area Scan | Zoom Scan |
|--------------------|---------------|---------------|
| psSAR-1g [W/kg] | 0.920 | 0.962 |
| psSAR-10g [W/kg] | 0.339 | 0.348 |
| Power Drift [dB] | | 0.01 |
| TSL Correction | Positive only | Positive only |
| M2 / M1 [%] | | 51.6 |
| Dist 3dB Peak [mm] | | 6.0 |



Test Date : 2024-01-18 | Ambient Temp : 22.7 °C | Tissue Temp : 22.2 °C

Test Mode

18_WLAN 5.3G_802.11ac VHT160_Rear Face_0mm_Ch50_Ant 2

Device Under Test Properties

| Manufacturer or Brand | Model No. or Code Name | Sample No. or IMEI | DUT Type |
|-----------------------|------------------------|--------------------|----------|
| Telit | LN920A12-WW | A006 | Tablet |

Exposure Conditions

| Phantom Section | Band | Group, UID | Frequency [MHz], Channel Number | Conversion Factor | TSL Conductivity [S/m] | TSL Permittivity |
|-----------------|-----------|-------------------|---------------------------------|-------------------|------------------------|------------------|
| Flat | WLAN 5GHz | WLAN, 10554 - AAD | 5250.000, 50 | 5.58 | 4.56 | 36.4 |

Hardware Setup

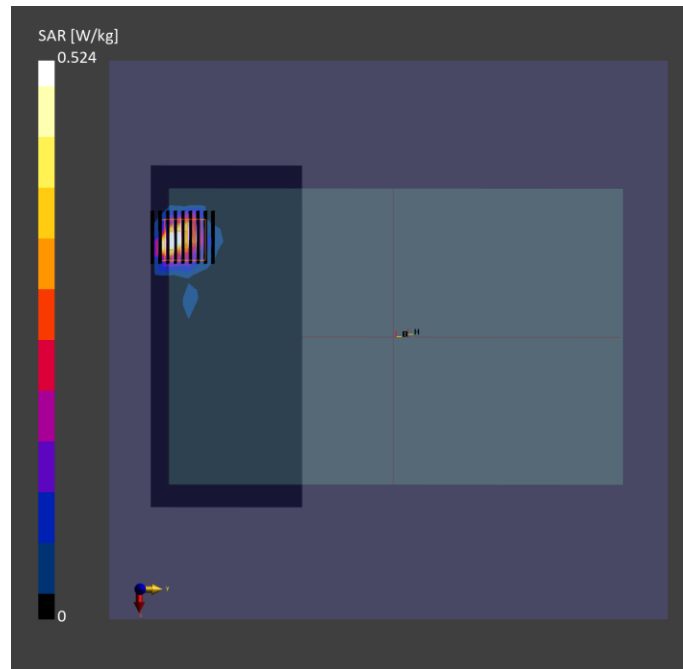
| Phantom | Tissue Simulating Liquid | Probe Calibration Date | DAE Calibration Date |
|------------------------------------|--------------------------|------------------------------|--------------------------|
| ELI V8.0 (20deg probe tilt) - 2141 | HBBL-600-10000 | EX3DV4 - SN7737 2023-06-05 | DAE4 Sn1743 2023-08-17 |

Scan Setup

| | Area Scan | Zoom Scan |
|---------------------|--------------|--------------------|
| Grid Extents [mm] | 180.0 x 80.0 | 24.0 x 24.0 x 22.0 |
| Grid Steps [mm] | 10.0 x 10.0 | 4.0 x 4.0 x 1.4 |
| Sensor Surface [mm] | 3.0 | 1.4 |
| Graded Grid | N/A | Yes |
| Grading Ratio | N/A | 1.4 |

Measurement Results

| | Area Scan | Zoom Scan |
|--------------------|---------------|---------------|
| psSAR-1g [W/kg] | 0.422 | 0.501 |
| psSAR-10g [W/kg] | 0.130 | 0.143 |
| Power Drift [dB] | | 0.08 |
| TSL Correction | Positive only | Positive only |
| M2 / M1 [%] | | 61.4 |
| Dist 3dB Peak [mm] | | 4.4 |



Test Date : 2024-01-18 | Ambient Temp : 22.7 °C | Tissue Temp : 22.2 °C

Test Mode

19_WLAN 5.6G_802.11ac VHT160_Rear Face_0mm_Ch114_Ant 1+2

Device Under Test Properties

| Manufacturer or Brand | Model No. or Code Name | Sample No. or IMEI | DUT Type |
|-----------------------|------------------------|--------------------|----------|
| Telit | LN920A12-WW | A006 | Tablet |

Exposure Conditions

| Phantom Section | Band | Group, UID | Frequency [MHz], Channel Number | Conversion Factor | TSL Conductivity [S/m] | TSL Permittivity |
|-----------------|-----------|-------------------|---------------------------------|-------------------|------------------------|------------------|
| Flat | WLAN 5GHz | WLAN, 10554 - AAD | 5570.000, 114 | 4.83 | 4.91 | 35.9 |

Hardware Setup

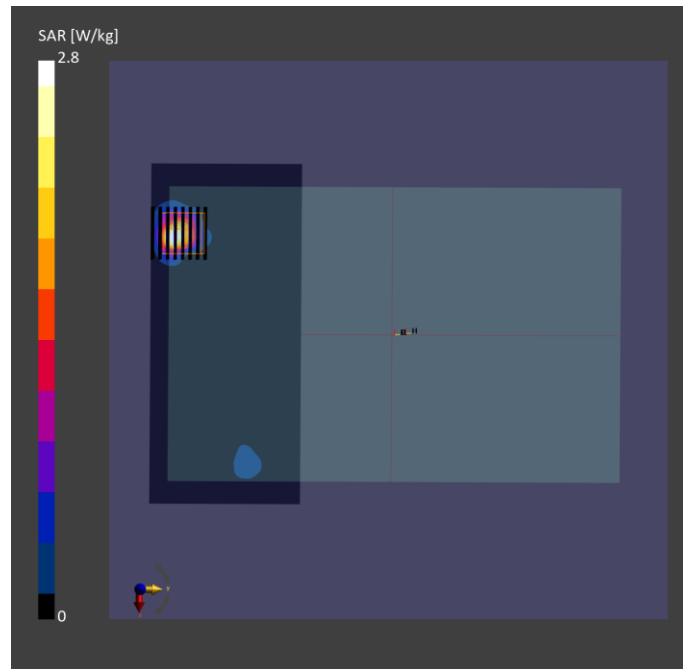
| Phantom | Tissue Simulating Liquid | Probe Calibration Date | DAE Calibration Date |
|------------------------------------|--------------------------|------------------------------|--------------------------|
| ELI V8.0 (20deg probe tilt) - 2141 | HBBL-600-10000 | EX3DV4 - SN7737 2023-06-05 | DAE4 Sn1743 2023-08-17 |

Scan Setup

| | Area Scan | Zoom Scan |
|---------------------|--------------|--------------------|
| Grid Extents [mm] | 180.0 x 80.0 | 24.0 x 24.0 x 22.0 |
| Grid Steps [mm] | 10.0 x 10.0 | 4.0 x 4.0 x 1.4 |
| Sensor Surface [mm] | 3.0 | 1.4 |
| Graded Grid | N/A | Yes |
| Grading Ratio | N/A | 1.4 |

Measurement Results

| | Area Scan | Zoom Scan |
|--------------------|---------------|---------------|
| psSAR-1g [W/kg] | 0.900 | 1.05 |
| psSAR-10g [W/kg] | 0.271 | 0.292 |
| Power Drift [dB] | | 0.01 |
| TSL Correction | Positive only | Positive only |
| M2 / M1 [%] | | 61.0 |
| Dist 3dB Peak [mm] | | 5.1 |



Test Date : 2024-01-18 | Ambient Temp : 22.7 °C | Tissue Temp : 22.2 °C

Test Mode

21_WLAN 5.8G_802.11ac VHT80_Rear Face_0mm_Ch155_Ant 2

Device Under Test Properties

| Manufacturer or Brand | Model No. or Code Name | Sample No. or IMEI | DUT Type |
|-----------------------|------------------------|--------------------|----------|
| Telit | LN920A12-WW | A006 | Tablet |

Exposure Conditions

| Phantom Section | Band | Group, UID | Frequency [MHz], Channel Number | Conversion Factor | TSL Conductivity [S/m] | TSL Permittivity |
|-----------------|-----------|-------------------|---------------------------------|-------------------|------------------------|------------------|
| Flat | WLAN 5GHz | WLAN, 10544 - AAC | 5775.000, 155 | 4.9 | 5.16 | 35.5 |

Hardware Setup

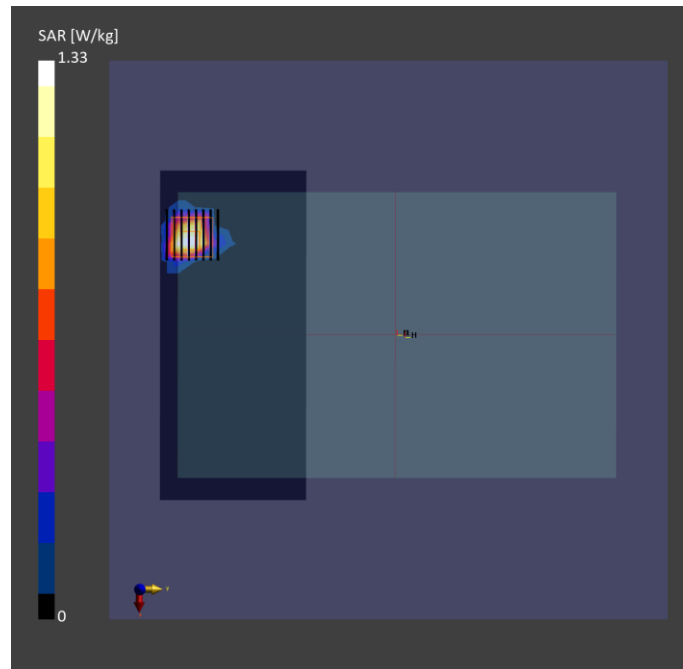
| Phantom | Tissue Simulating Liquid | Probe Calibration Date | DAE Calibration Date |
|------------------------------------|--------------------------|------------------------------|--------------------------|
| ELI V8.0 (20deg probe tilt) - 2141 | HBBL-600-10000 | EX3DV4 - SN7737 2023-06-05 | DAE4 Sn1743 2023-08-17 |

Scan Setup

| | Area Scan | Zoom Scan |
|---------------------|--------------|--------------------|
| Grid Extents [mm] | 180.0 x 80.0 | 24.0 x 24.0 x 22.0 |
| Grid Steps [mm] | 10.0 x 10.0 | 4.0 x 4.0 x 1.4 |
| Sensor Surface [mm] | 3.0 | 1.4 |
| Graded Grid | N/A | Yes |
| Grading Ratio | N/A | 1.4 |

Measurement Results

| | Area Scan | Zoom Scan |
|--------------------|---------------|---------------|
| psSAR-1g [W/kg] | 1.12 | 1.14 |
| psSAR-10g [W/kg] | 0.350 | 0.371 |
| Power Drift [dB] | | 0.09 |
| TSL Correction | Positive only | Positive only |
| M2 / M1 [%] | | 56.6 |
| Dist 3dB Peak [mm] | | 4.6 |



Test Date : 2024-01-17 | Ambient Temp : 22.6 °C | Tissue Temp : 22.3 °C

Test Mode

22_Bluetooth_8-DPSK_Rear Face_0mm_Ch39_Ant 2

Device Under Test Properties

| Manufacturer or Brand | Model No. or Code Name | Sample No. or IMEI | DUT Type |
|-----------------------|------------------------|--------------------|----------|
| Telit | LN920A12-WW | A006 | Tablet |

Exposure Conditions

| Phantom Section | Band | Group, UID | Frequency [MHz], Channel Number | Conversion Factor | TSL Conductivity [S/m] | TSL Permittivity |
|-----------------|------------------|------------------------|---------------------------------|-------------------|------------------------|------------------|
| Flat | ISM 2.4 GHz Band | Bluetooth, 10032 - CAA | 2441.000, 39 | 7.05 | 1.82 | 41.6 |

Hardware Setup

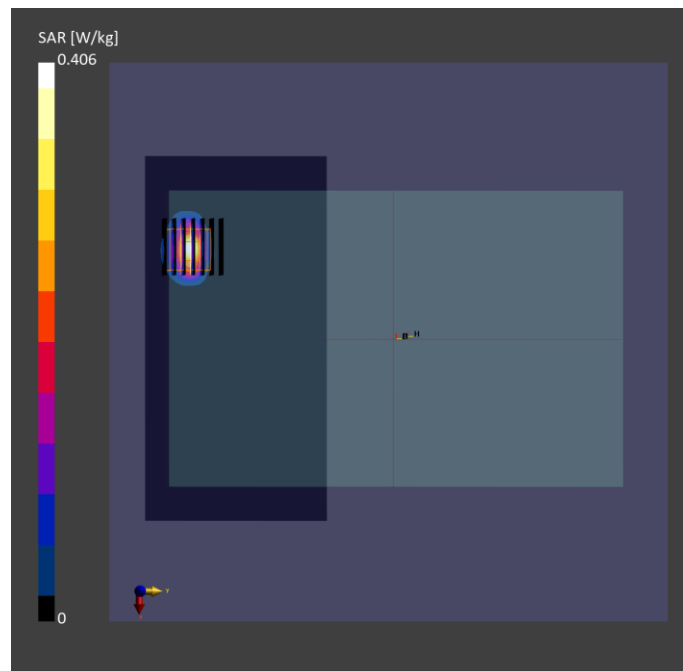
| Phantom | Tissue Simulating Liquid | Probe Calibration Date | DAE Calibration Date |
|------------------------------------|--------------------------|------------------------------|--------------------------|
| ELI V8.0 (20deg probe tilt) - 2141 | HBBL-600-10000 | EX3DV4 - SN7737 / 2023-06-05 | DAE4 Sn1743 / 2023-08-17 |

Scan Setup

| | Area Scan | Zoom Scan |
|---------------------|--------------|--------------------|
| Grid Extents [mm] | 192.0 x 96.0 | 30.0 x 30.0 x 30.0 |
| Grid Steps [mm] | 12.0 x 12.0 | 5.0 x 5.0 x 5.0 |
| Sensor Surface [mm] | 3.0 | 1.4 |
| Graded Grid | N/A | Yes |
| Grading Ratio | N/A | 1.4 |

Measurement Results

| | Area Scan | Zoom Scan |
|--------------------|---------------|---------------|
| psSAR-1g [W/kg] | 0.334 | 0.355 |
| psSAR-10g [W/kg] | 0.159 | 0.164 |
| Power Drift [dB] | | -0.11 |
| TSL Correction | Positive only | Positive only |
| M2 / M1 [%] | | 51.7 |
| Dist 3dB Peak [mm] | | 6.0 |



Test Date : 2023-12-29 | Ambient Temp : 22.2 °C | Tissue Temp : 21.9 °C

Test Mode

23_UNII-5_802.11ax HE160_Rear Face_0mm_Ch15_Ant 2

Device Under Test Properties

| Manufacturer or Brand | Model No. or Code Name | Sample No. or IMEI | DUT Type |
|-----------------------|------------------------|--------------------|----------|
| Telit | LN920A12-WW | A006 | Tablet |

Exposure Conditions

| Phantom Section | Band | Group, UID | Frequency [MHz], Channel Number | Conversion Factor | TSL Conductivity [S/m] | TSL Permittivity |
|-----------------|---------|-------------------|---------------------------------|-------------------|------------------------|------------------|
| Flat | U-NII-5 | WLAN, 10755 - AAC | 6025.000, 15 | 4.47 | 5.44 | 34.7 |

Hardware Setup

| Phantom | Tissue Simulating Liquid | Probe Calibration Date | DAE Calibration Date |
|------------------------------------|--------------------------|------------------------------|--------------------------|
| ELI V8.0 (20deg probe tilt) - 2141 | HBBL-600-10000 | EX3DV4 - SN7757 / 2023-08-22 | DAE4 Sn1669 / 2023-05-23 |

Scan Setup

| | Area Scan | Zoom Scan |
|---------------------|--------------|--------------------|
| Grid Extents [mm] | 187.0 x 85.0 | 23.8 x 23.8 x 22.0 |
| Grid Steps [mm] | 8.5 x 8.5 | 3.4 x 3.4 x 1.4 |
| Sensor Surface [mm] | 3.0 | 1.4 |
| Graded Grid | N/A | Yes |
| Grading Ratio | N/A | 1.4 |

Measurement Results

| | Area Scan | Zoom Scan |
|--|---------------|---------------|
| psSAR-1g [W/kg] | 0.764 | 0.829 |
| psSAR-10g [W/kg] | 0.237 | 0.258 |
| psAPD (1.0 cm ² , sq) [W/m ²] | | 8.29 |
| psAPD (4.0 cm ² , sq) [W/m ²] | | 5.98 |
| Power Drift [dB] | | 0.04 |
| TSL Correction | Positive only | Positive only |
| M2 / M1 [%] | | 54.7 |
| Dist 3dB Peak [mm] | | 5.0 |

