

Appendix B – System Check Plots

Test Date : 2024-01-20 | Ambient Temp : 22.4 °C | Tissue Temp : 21.9 °C

System Performance Check

System Performance Check_H750

Verification Source Properties

Manufacturer	Model No.	Serial No.	Input Power [dBm]
SPEAG	D750	1222	17.0

Exposure Conditions

Phantom Section	Group	Frequency [MHz]	Conversion Factor	TSL Conductivity [S/m]	TSL Permittivity
Flat	CW	750.000	9.22	0.884	43.0

Hardware Setup

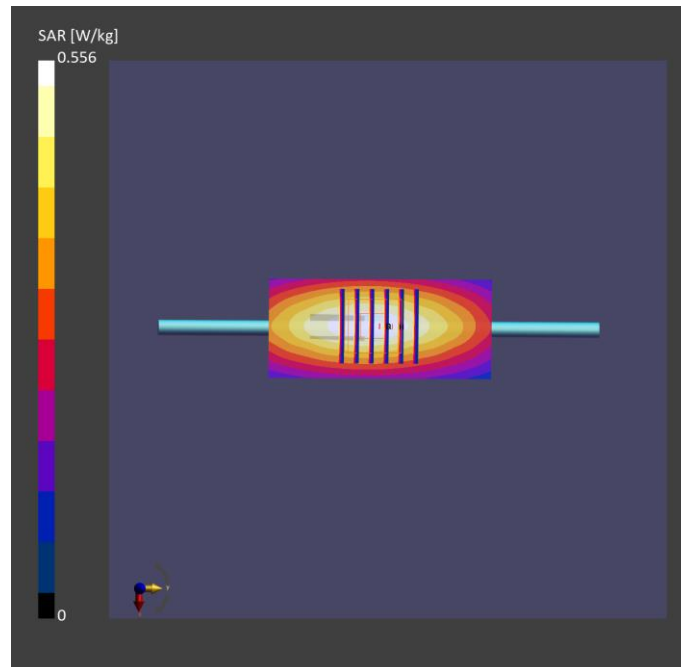
Phantom	Tissue Simulating Liquid	Probe Calibration Date	DAE Calibration Date
ELI V8.0 (20deg probe tilt) - 2141	HBBL-600-10000	EX3DV4 - SN7737 2023-06-05	DAE4 Sn1743 2023-08-17

Scan Setup

	Area Scan	Zoom Scan
Grid Extents [mm]	40.0 x 90.0	30.0 x 30.0 x 30.0
Grid Steps [mm]	10.0 x 15.0	6.0 x 6.0 x 1.5
Sensor Surface [mm]	3.0	1.4
Graded Grid	N/A	Yes
Grading Ratio	N/A	1.5

Measurement Results

	Area Scan	Zoom Scan
psSAR-1g [W/kg]	0.446	0.435
psSAR-10g [W/kg]	0.297	0.287
Power Drift [dB]		0.08
TSL Correction	Positive only	Positive only



Test Date : 2024-01-23 | Ambient Temp : 22.5 °C | Tissue Temp : 22.1 °C

System Performance Check

System Performance Check_H750

Verification Source Properties

Manufacturer	Model No.	Serial No.	Input Power [dBm]
SPEAG	D750	1222	17.0

Exposure Conditions

Phantom Section	Group	Frequency [MHz]	Conversion Factor	TSL Conductivity [S/m]	TSL Permittivity
Flat	CW	750.000	9.22	0.913	42.5

Hardware Setup

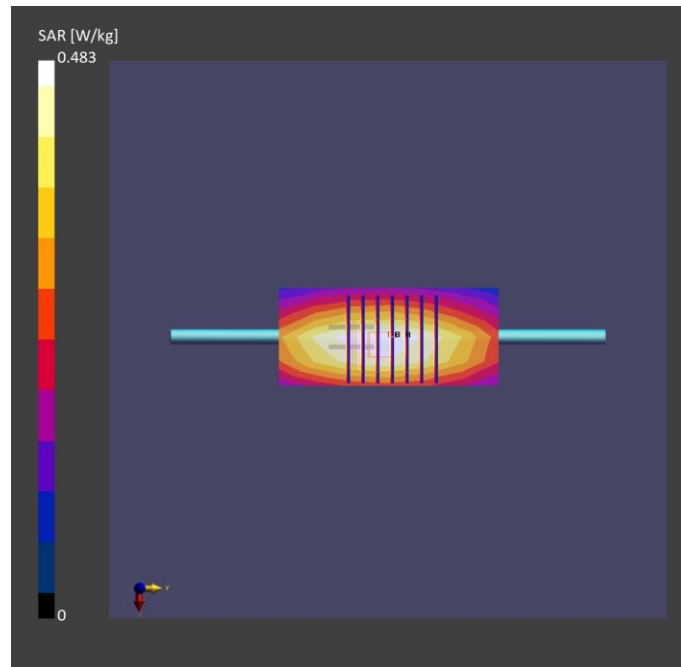
Phantom	Tissue Simulating Liquid	Probe Calibration Date	DAE Calibration Date
ELI V8.0 (20deg probe tilt) - 2141	HBBL-600-10000	EX3DV4 - SN7737 2023-06-05	DAE4 Sn1743 2023-08-17

Scan Setup

	Area Scan	Zoom Scan
Grid Extents [mm]	40.0 x 90.0	32.0 x 32.0 x 30.0
Grid Steps [mm]	10.0 x 15.0	6.0 x 6.0 x 1.5
Sensor Surface [mm]	3.0	1.4
Graded Grid	N/A	Yes
Grading Ratio	N/A	1.5

Measurement Results

	Area Scan	Zoom Scan
psSAR-1g [W/kg]	0.429	0.431
psSAR-10g [W/kg]	0.289	0.288
Power Drift [dB]		0.06
TSL Correction	Positive only	Positive only



Test Date : 2024-01-23 | Ambient Temp : 22.5 °C | Tissue Temp : 22.1 °C

System Performance Check

System Performance Check_H835

Verification Source Properties

Manufacturer	Model No.	Serial No.	Input Power [dBm]
SPEAG	D835	4d291	17.0

Exposure Conditions

Phantom Section	Group	Frequency [MHz]	Conversion Factor	TSL Conductivity [S/m]	TSL Permittivity
Flat	CW	835.000	9.12	0.940	42.2

Hardware Setup

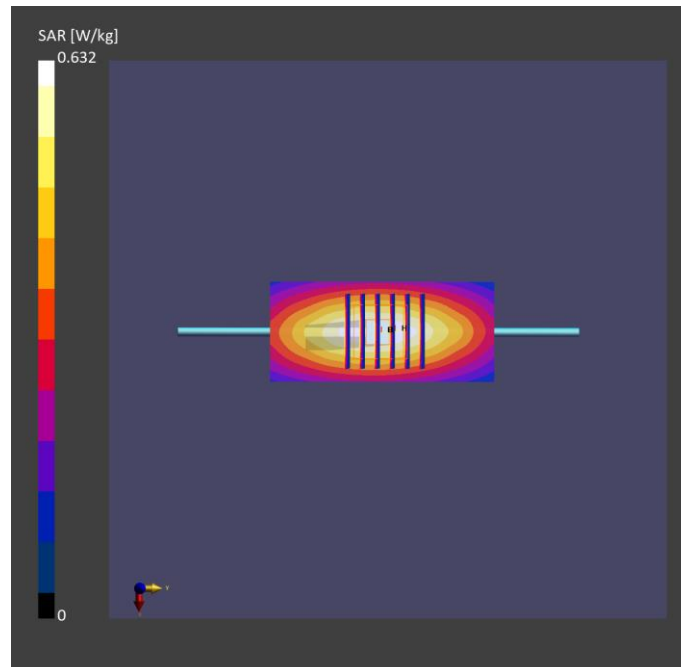
Phantom	Tissue Simulating Liquid	Probe Calibration Date	DAE Calibration Date
ELI V8.0 (20deg probe tilt) - 2141	HBBL-600-10000	EX3DV4 - SN7737 2023-06-05	DAE4 Sn1743 2023-08-17

Scan Setup

	Area Scan	Zoom Scan
Grid Extents [mm]	40.0 x 90.0	30.0 x 30.0 x 30.0
Grid Steps [mm]	10.0 x 15.0	6.0 x 6.0 x 1.5
Sensor Surface [mm]	3.0	1.4
Graded Grid	N/A	Yes
Grading Ratio	N/A	1.5

Measurement Results

	Area Scan	Zoom Scan
psSAR-1g [W/kg]	0.495	0.493
psSAR-10g [W/kg]	0.325	0.324
Power Drift [dB]		0.02
TSL Correction	Positive only	Positive only



Test Date : 2024-01-19 | Ambient Temp : 22.5 °C | Tissue Temp : 22.1 °C

System Performance Check

System Performance Check_H1800

Verification Source Properties

Manufacturer	Model No.	Serial No.	Input Power [dBm]
SPEAG	D1800	2d167	17.0

Exposure Conditions

Phantom Section	Group	Frequency [MHz]	Conversion Factor	TSL Conductivity [S/m]	TSL Permittivity
Flat	CW	1800.000	8.03	1.37	40.5

Hardware Setup

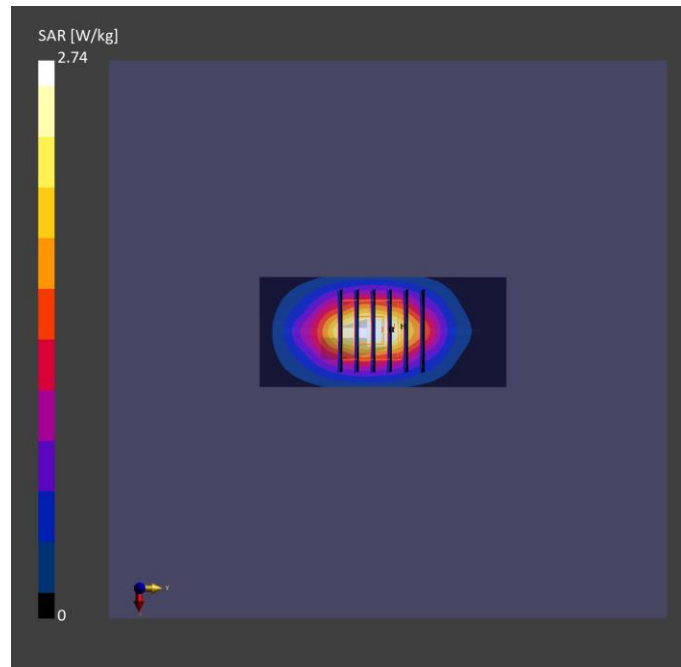
Phantom	Tissue Simulating Liquid	Probe Calibration Date	DAE Calibration Date
ELI V8.0 (20deg probe tilt) - 2141	HBBL-600-10000	EX3DV4 - SN7737 2023-06-05	DAE4 Sn1743 2023-08-17

Scan Setup

	Area Scan	Zoom Scan
Grid Extents [mm]	40.0 x 90.0	30.0 x 30.0 x 30.0
Grid Steps [mm]	10.0 x 15.0	6.0 x 6.0 x 1.5
Sensor Surface [mm]	3.0	1.4
Graded Grid	N/A	Yes
Grading Ratio	N/A	1.5

Measurement Results

	Area Scan	Zoom Scan
psSAR-1g [W/kg]	1.89	1.89
psSAR-10g [W/kg]	0.989	0.994
Power Drift [dB]		0.00
TSL Correction	Positive only	Positive only



Test Date : 2024-01-19 | Ambient Temp : 22.5 °C | Tissue Temp : 22.1 °C

System Performance Check

System Performance Check_H1900

Verification Source Properties

Manufacturer	Model No.	Serial No.	Input Power [dBm]
SPEAG	D1900	5d111	17.0

Exposure Conditions

Phantom Section	Group	Frequency [MHz]	Conversion Factor	TSL Conductivity [S/m]	TSL Permittivity
Flat	CW	1900.000	7.7	1.43	40.3

Hardware Setup

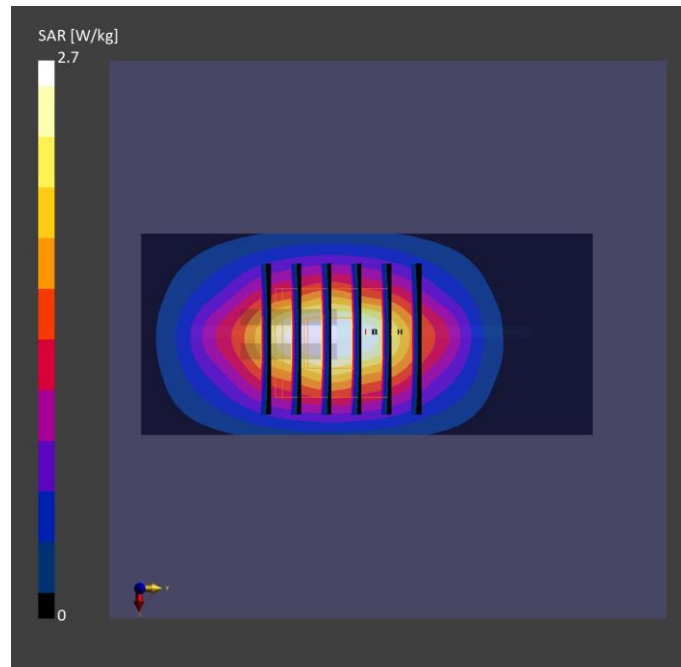
Phantom	Tissue Simulating Liquid	Probe Calibration Date	DAE Calibration Date
ELI V8.0 (20deg probe tilt) - 2141	HBBL-600-10000	EX3DV4 - SN7737 2023-06-05	DAE4 Sn1743 2023-08-17

Scan Setup

	Area Scan	Zoom Scan
Grid Extents [mm]	40.0 x 90.0	30.0 x 30.0 x 30.0
Grid Steps [mm]	10.0 x 15.0	6.0 x 6.0 x 1.5
Sensor Surface [mm]	3.0	1.4
Graded Grid	N/A	Yes
Grading Ratio	N/A	1.5

Measurement Results

	Area Scan	Zoom Scan
psSAR-1g [W/kg]	1.84	1.83
psSAR-10g [W/kg]	0.959	0.958
Power Drift [dB]		0.02
TSL Correction	Positive only	Positive only



Test Date : 2024-01-17 | Ambient Temp : 22.6 °C | Tissue Temp : 22.3 °C

System Performance Check

System Performance Check_H2450

Verification Source Properties

Manufacturer	Model No.	Serial No.	Input Power [dBm]
SPEAG	D2450	1087	17.0

Exposure Conditions

Phantom Section	Group	Frequency [MHz]	Conversion Factor	TSL Conductivity [S/m]	TSL Permittivity
Flat	CW	2450.000	7.05	1.83	41.6

Hardware Setup

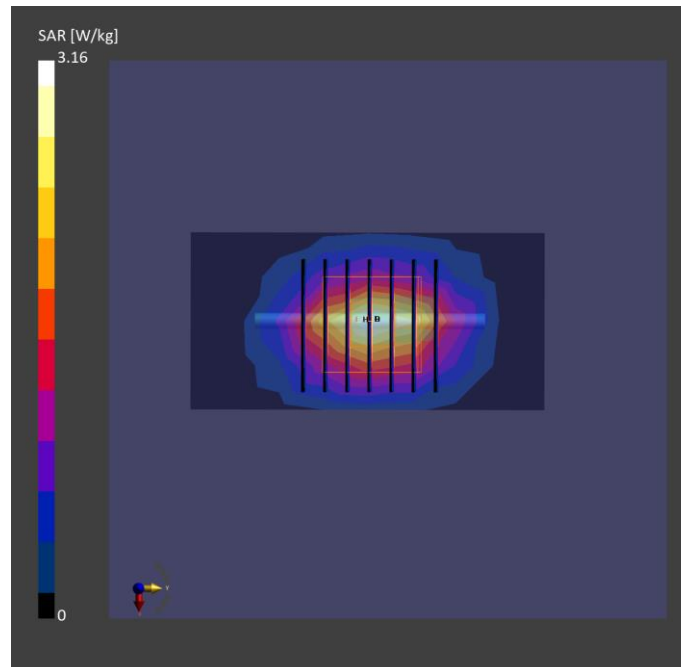
Phantom	Tissue Simulating Liquid	Probe Calibration Date	DAE Calibration Date
ELI V8.0 (20deg probe tilt) - 2141	HBBL-600-10000	EX3DV4 - SN7737 / 2023-06-05	DAE4 Sn1743 / 2023-08-17

Scan Setup

	Area Scan	Zoom Scan
Grid Extents [mm]	40.0 x 80.0	30.0 x 30.0 x 30.0
Grid Steps [mm]	10.0 x 10.0	5.0 x 5.0 x 1.5
Sensor Surface [mm]	3.0	1.4
Graded Grid	N/A	Yes
Grading Ratio	N/A	1.5

Measurement Results

	Area Scan	Zoom Scan
psSAR-1g [W/kg]	2.53	2.41
psSAR-10g [W/kg]	1.17	1.12
Power Drift [dB]		0.02
TSL Correction	Positive only	Positive only



Test Date : 2024-01-21 | Ambient Temp : 22.7 °C | Tissue Temp : 22.1 °C

System Performance Check

System Performance Check_H2600

Verification Source Properties

Manufacturer	Model No.	Serial No.	Input Power [dBm]
SPEAG	D2600	1197	17.0

Exposure Conditions

Phantom Section	Group	Frequency [MHz]	Conversion Factor	TSL Conductivity [S/m]	TSL Permittivity
Flat	CW	2600.000	7.17	1.93	41.2

Hardware Setup

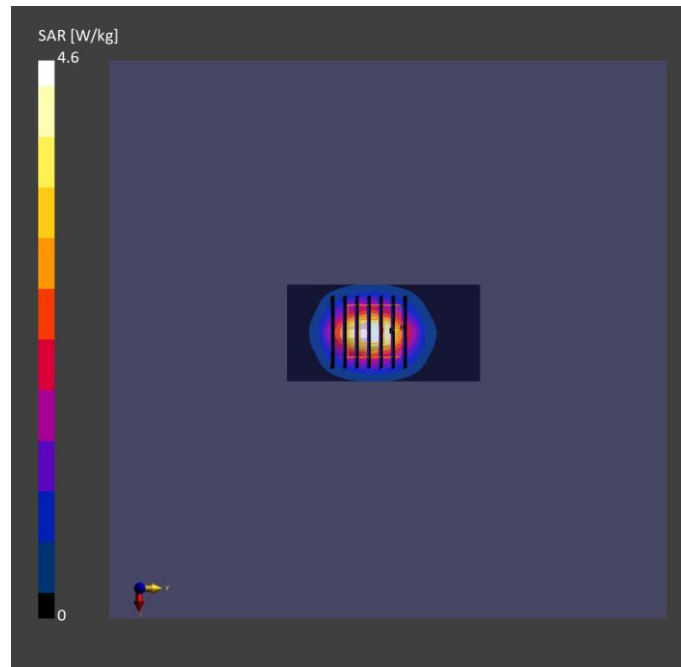
Phantom	Tissue Simulating Liquid	Probe Calibration Date	DAE Calibration Date
ELI V8.0 (20deg probe tilt) - 2141	HBBL-600-10000	EX3DV4 - SN7737 / 2023-06-05	DAE4 Sn1743 / 2023-08-17

Scan Setup

	Area Scan	Zoom Scan
Grid Extents [mm]	40.0 x 80.0	30.0 x 30.0 x 30.0
Grid Steps [mm]	10.0 x 10.0	5.0 x 5.0 x 1.5
Sensor Surface [mm]	3.0	1.4
Graded Grid	N/A	Yes
Grading Ratio	N/A	1.5

Measurement Results

	Area Scan	Zoom Scan
psSAR-1g [W/kg]	2.75	2.75
psSAR-10g [W/kg]	1.22	1.23
Power Drift [dB]		0.00
TSL Correction	Positive only	Positive only



Test Date : 2024-01-24 | Ambient Temp : 22.4 °C | Tissue Temp : 22.2 °C

System Performance Check

System Performance Check_H2600

Verification Source Properties

Manufacturer	Model No.	Serial No.	Input Power [dBm]
SPEAG	D2600	1197	17.0

Exposure Conditions

Phantom Section	Group	Frequency [MHz]	Conversion Factor	TSL Conductivity [S/m]	TSL Permittivity
Flat	CW	2600.000	7.17	1.92	40.4

Hardware Setup

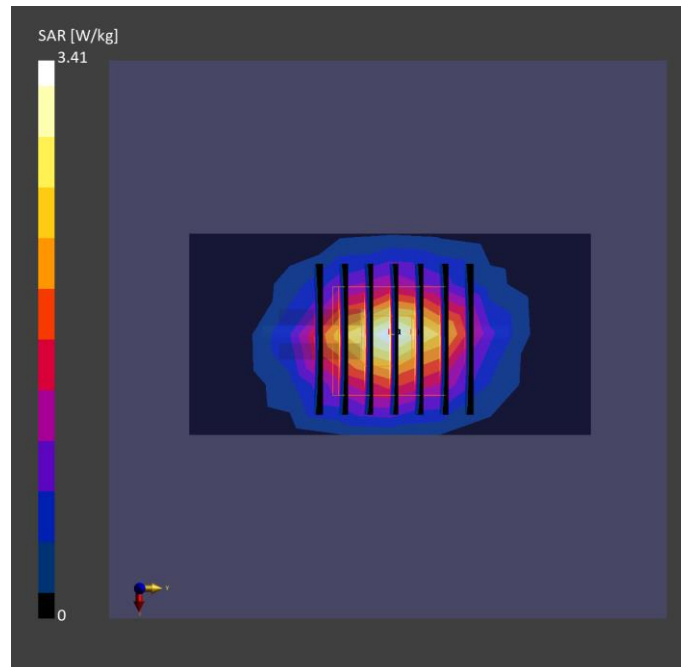
Phantom	Tissue Simulating Liquid	Probe Calibration Date	DAE Calibration Date
ELI V8.0 (20deg probe tilt) - 2141	HBBL-600-10000	EX3DV4 - SN7737 2023-06-05	DAE4 Sn1743 2023-08-17

Scan Setup

	Area Scan	Zoom Scan
Grid Extents [mm]	40.0 x 80.0	30.0 x 30.0 x 30.0
Grid Steps [mm]	10.0 x 10.0	5.0 x 5.0 x 1.5
Sensor Surface [mm]	3.0	1.4
Graded Grid	N/A	Yes
Grading Ratio	N/A	1.5

Measurement Results

	Area Scan	Zoom Scan
psSAR-1g [W/kg]	2.59	2.60
psSAR-10g [W/kg]	1.15	1.17
Power Drift [dB]		0.00
TSL Correction	Positive only	Positive only



Test Date : 2024-01-22 | Ambient Temp : 22.6 °C | Tissue Temp : 22.4 °C

System Performance Check

System Performance Check_H3500

Verification Source Properties

Manufacturer	Model No.	Serial No.	Input Power [dBm]
SPEAG	D3500	1013	17.0

Exposure Conditions

Phantom Section	Group	Frequency [MHz]	Conversion Factor	TSL Conductivity [S/m]	TSL Permittivity
Flat	CW	3500.000	6.87	2.72	39.5

Hardware Setup

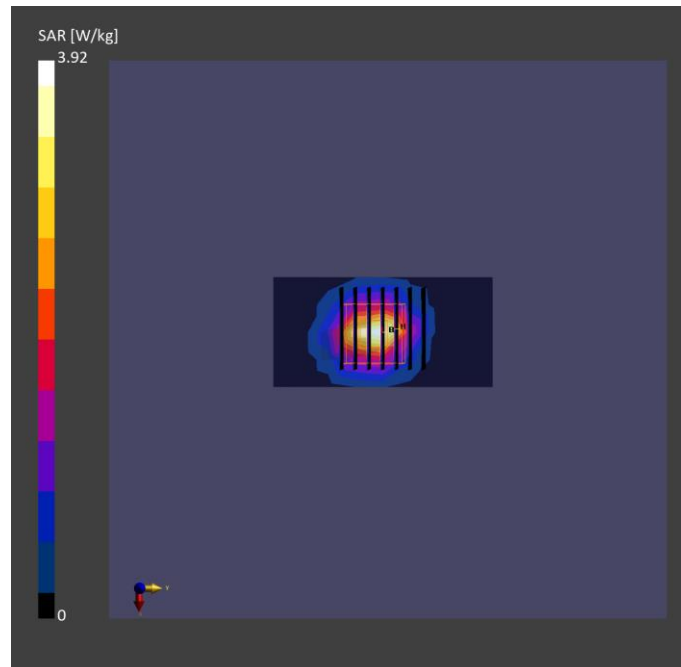
Phantom	Tissue Simulating Liquid	Probe Calibration Date	DAE Calibration Date
ELI V8.0 (20deg probe tilt) - 2141	HBBL-600-10000	EX3DV4 - SN7737 2023-06-05	DAE4 Sn1743 2023-08-17

Scan Setup

	Area Scan	Zoom Scan
Grid Extents [mm]	40.0 x 80.0	28.0 x 28.0 x 28.0
Grid Steps [mm]	10.0 x 10.0	5.0 x 5.0 x 1.4
Sensor Surface [mm]	3.0	1.4
Graded Grid	N/A	Yes
Grading Ratio	N/A	1.5

Measurement Results

	Area Scan	Zoom Scan
psSAR-1g [W/kg]	2.95	2.98
psSAR-10g [W/kg]	1.11	1.14
Power Drift [dB]		0.01
TSL Correction	Positive only	Positive only



Test Date : 2024-01-22 | Ambient Temp : 22.6 °C | Tissue Temp : 22.4 °C

System Performance Check

System Performance Check_H3700

Verification Source Properties

Manufacturer	Model No.	Serial No.	Input Power [dBm]
SPEAG	D3700	1034	17.0

Exposure Conditions

Phantom Section	Group	Frequency [MHz]	Conversion Factor	TSL Conductivity [S/m]	TSL Permittivity
Flat	CW	3700.000	6.8	2.91	39.2

Hardware Setup

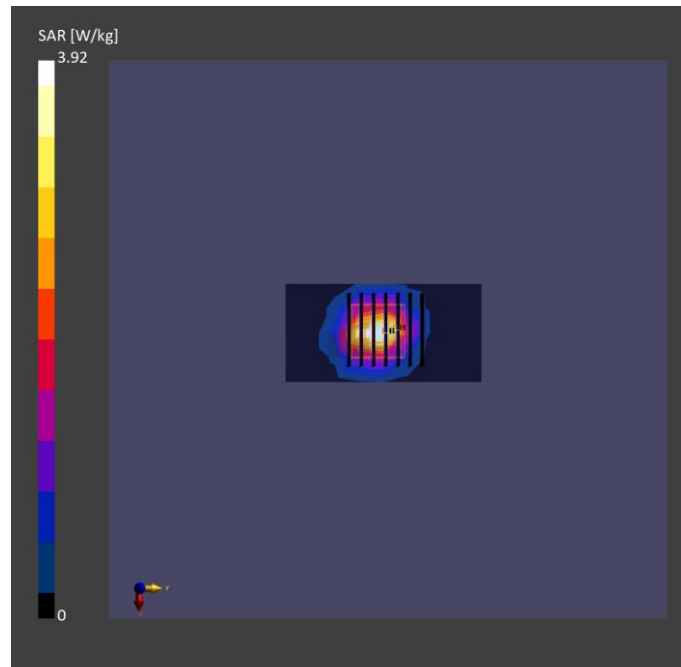
Phantom	Tissue Simulating Liquid	Probe Calibration Date	DAE Calibration Date
ELI V8.0 (20deg probe tilt) - 2141	HBBL-600-10000	EX3DV4 - SN7737 / 2023-06-05	DAE4 Sn1743 / 2023-08-17

Scan Setup

	Area Scan	Zoom Scan
Grid Extents [mm]	40.0 x 80.0	28.0 x 28.0 x 28.0
Grid Steps [mm]	10.0 x 10.0	5.0 x 5.0 x 1.4
Sensor Surface [mm]	3.0	1.4
Graded Grid	N/A	Yes
Grading Ratio	N/A	1.5

Measurement Results

	Area Scan	Zoom Scan
psSAR-1g [W/kg]	3.12	3.16
psSAR-10g [W/kg]	1.14	1.17
Power Drift [dB]		0.01
TSL Correction	Positive only	Positive only



Test Date : 2024-01-18 | Ambient Temp : 22.7 °C | Tissue Temp : 22.2 °C

System Performance Check

System Performance Check_H5250

Verification Source Properties

Manufacturer	Model No.	Serial No.	Input Power [dBm]
SPEAG	D5GHz	1358	17.0

Exposure Conditions

Phantom Section	Group	Frequency [MHz]	Conversion Factor	TSL Conductivity [S/m]	TSL Permittivity
Flat	CW	5250.000	5.58	4.56	36.4

Hardware Setup

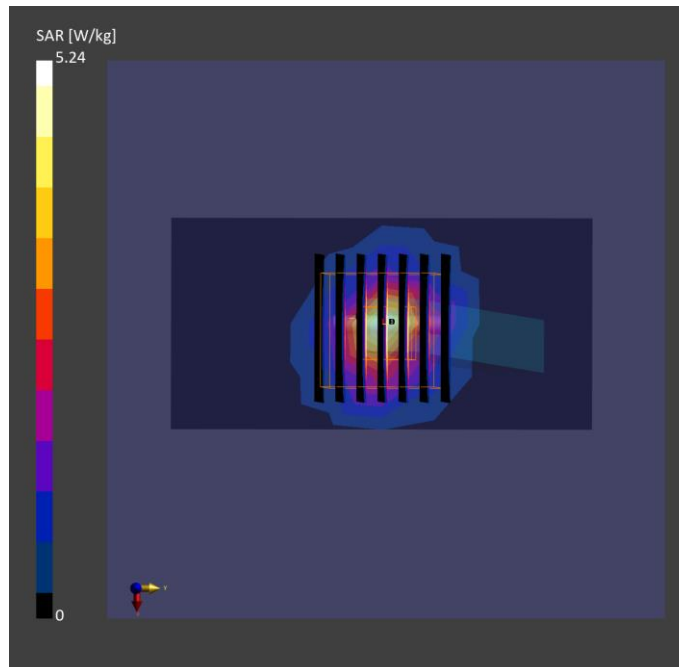
Phantom	Tissue Simulating Liquid	Probe Calibration Date	DAE Calibration Date
ELI V8.0 (20deg probe tilt) - 2141	HBBL-600-10000	EX3DV4 - SN7737 2023-06-05	DAE4 Sn1743 2023-08-17

Scan Setup

	Area Scan	Zoom Scan
Grid Extents [mm]	40.0 x 80.0	22.0 x 22.0 x 22.0
Grid Steps [mm]	10.0 x 10.0	4.0 x 4.0 x 1.4
Sensor Surface [mm]	3.0	1.4
Graded Grid	N/A	Yes
Grading Ratio	N/A	1.4

Measurement Results

	Area Scan	Zoom Scan
psSAR-1g [W/kg]	3.25	3.62
psSAR-10g [W/kg]	0.946	1.13
Power Drift [dB]		0.02
TSL Correction	Positive only	Positive only



Test Date : 2024-01-18 | Ambient Temp : 22.7 °C | Tissue Temp : 22.2 °C

System Performance Check

System Performance Check_H5600

Verification Source Properties

Manufacturer	Model No.	Serial No.	Input Power [dBm]
SPEAG	D5GHz	1358	17.0

Exposure Conditions

Phantom Section	Group	Frequency [MHz]	Conversion Factor	TSL Conductivity [S/m]	TSL Permittivity
Flat	CW	5600.000	4.83	4.95	35.8

Hardware Setup

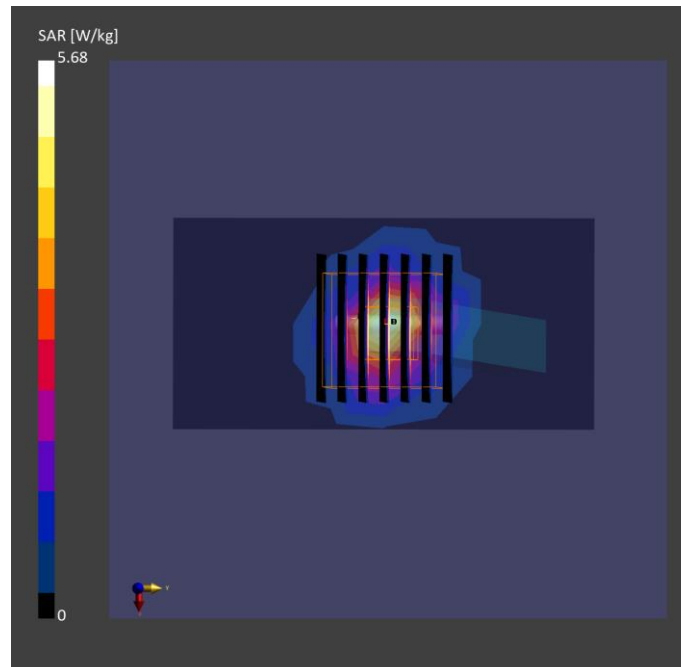
Phantom	Tissue Simulating Liquid	Probe Calibration Date	DAE Calibration Date
ELI V8.0 (20deg probe tilt) - 2141	HBBL-600-10000	EX3DV4 - SN7737 / 2023-06-05	DAE4 Sn1743 / 2023-08-17

Scan Setup

	Area Scan	Zoom Scan
Grid Extents [mm]	40.0 x 80.0	22.0 x 22.0 x 22.0
Grid Steps [mm]	10.0 x 10.0	4.0 x 4.0 x 1.4
Sensor Surface [mm]	3.0	1.4
Graded Grid	N/A	Yes
Grading Ratio	N/A	1.4

Measurement Results

	Area Scan	Zoom Scan
psSAR-1g [W/kg]	3.55	3.86
psSAR-10g [W/kg]	1.01	1.11
Power Drift [dB]		0.01
TSL Correction	Positive only	Positive only



Test Date : 2024-01-18 | Ambient Temp : 22.7 °C | Tissue Temp : 22.2 °C

System Performance Check

System Performance Check_H5800

Verification Source Properties

Manufacturer	Model No.	Serial No.	Input Power [dBm]
SPEAG	D5GHz	1358	17.0

Exposure Conditions

Phantom Section	Group	Frequency [MHz]	Conversion Factor	TSL Conductivity [S/m]	TSL Permittivity
Flat	CW	5800.000	4.9	5.19	35.5

Hardware Setup

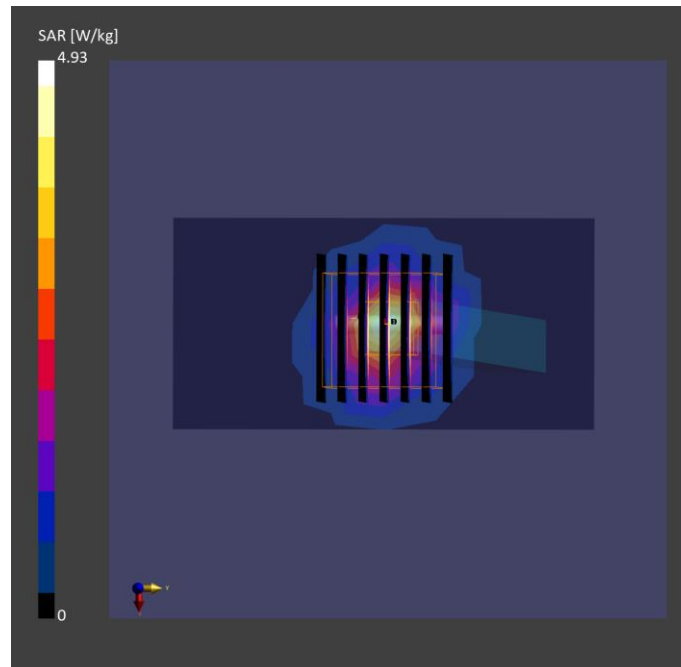
Phantom	Tissue Simulating Liquid	Probe Calibration Date	DAE Calibration Date
ELI V8.0 (20deg probe tilt) - 2141	HBBL-600-10000	EX3DV4 - SN7737 / 2023-06-05	DAE4 Sn1743 / 2023-08-17

Scan Setup

	Area Scan	Zoom Scan
Grid Extents [mm]	40.0 x 80.0	22.0 x 22.0 x 22.0
Grid Steps [mm]	10.0 x 10.0	4.0 x 4.0 x 1.4
Sensor Surface [mm]	3.0	1.4
Graded Grid	N/A	Yes
Grading Ratio	N/A	1.4

Measurement Results

	Area Scan	Zoom Scan
psSAR-1g [W/kg]	3.12	3.68
psSAR-10g [W/kg]	0.894	1.16
Power Drift [dB]		0.02
TSL Correction	Positive only	Positive only



Test Date : 2023-12-29 | Ambient Temp : 22.2 °C | Tissue Temp : 21.9 °C

System Performance Check

System Performance Check_H6500

Verification Source Properties

Manufacturer	Model No.	Serial No.	Input Power [dBm]
SPEAG	D6.5GHz	1081	20.0

Exposure Conditions

Phantom Section	Group	Frequency [MHz]	Conversion Factor	TSL Conductivity [S/m]	TSL Permittivity
Flat	CW	6500.000	4.47	6.01	33.9

Hardware Setup

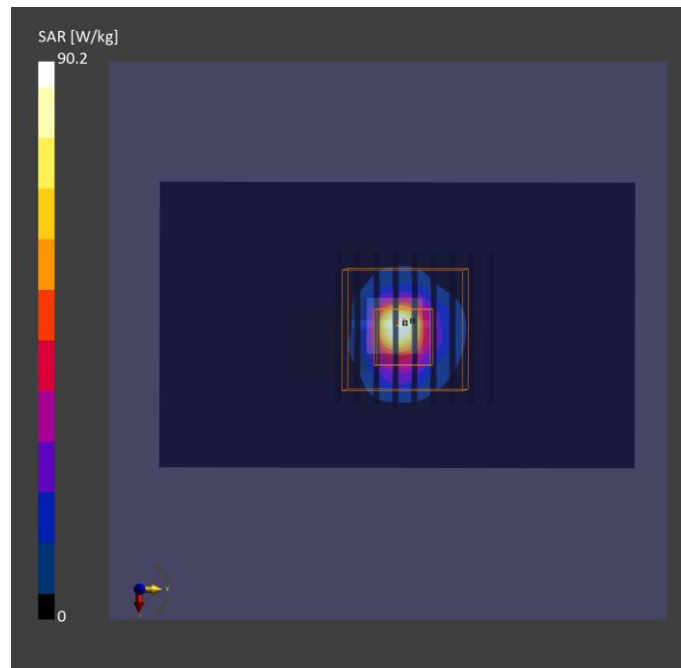
Phantom	Tissue Simulating Liquid	Probe Calibration Date	DAE Calibration Date
ELI V8.0 (20deg probe tilt) - 2141	HBBL-600-10000	EX3DV4 - SN7757 / 2023-08-22	DAE4 Sn1669 / 2023-05-23

Scan Setup

	Area Scan	Zoom Scan
Grid Extents [mm]	51.0 x 85.0	22.0 x 22.0 x 22.0
Grid Steps [mm]	8.5 x 8.5	3.4 x 3.4 x 1.4
Sensor Surface [mm]	3.0	1.4
Graded Grid	N/A	Yes
Grading Ratio	N/A	1.4

Measurement Results

	Area Scan	Zoom Scan
psSAR-1g [W/kg]	23.2	26.3
psSAR-8g [W/kg]	5.54	5.95
psSAR-10g [W/kg]	4.59	4.89
psAPD (1.0 cm ² , sq) [W/m ²]		261
psAPD (4.0 cm ² , sq) [W/m ²]		119
Power Drift [dB]		0.01
TSL Correction	Positive only	Positive only



Test Date : 2024-01-11 | Ambient Temp : 22.6 °C

System Performance Check

System Performance Check_10GHz

Verification Source Properties

Manufacturer	Model No.	Serial No.
SPEAG	D10GHz	1060

Exposure Conditions

Phantom Section	Group	Frequency [MHz]	Conversion Factor
5G	CW	10000.0	1.0

Hardware Setup

Phantom	Medium	Probe Calibration Date	DAE Calibration Date
mmWave - 1102	Air	EUmmWV4 - SN9639_F1-55GHz / 2023-08-18	DAE4 Sn1743 / 2023-08-17

Scan Setup

	5G Scan
Grid Extents [mm]	60.0 x 60.0
Grid Steps [mm]	0.125 x 0.125
Sensor Surface [mm]	2.0

Measurement Results

	5G Scan
Avg. Area [cm ²]	4.00
psPD n+ [W/m ²]	55.3
psPD tot+ [W/m ²]	52.7
psPD mod+ [W/m ²]	53.2
E max [V/m]	150
Power Drift [dB]	0.11

