

Appendix C – Highest Test Plots

Test Date : 2024-08-09 | Ambient Temp : 22.5 °C | Tissue Temp : 21.3 °C

Test Mode

1_WCDMA II_RMC12.2K_Top Side_0 mm_Ch9538_Ant Main_Battery1_P-Sensor w/

Device Under Test Properties

Manufacturer or Brand	Model No. or Code Name	Sample No. or IMEI	DUT Type
Getac	ZX10	A005	Tablet

Exposure Conditions

Phantom Section	Band	Group, UID	Frequency [MHz], Channel Number	Conversion Factor	TSL Conductivity [S/m]	TSL Permittivity
Flat	Band 2	WCDMA, 10011 - CAC	1907.600, 9538	8.03	1.46	42.4

Hardware Setup

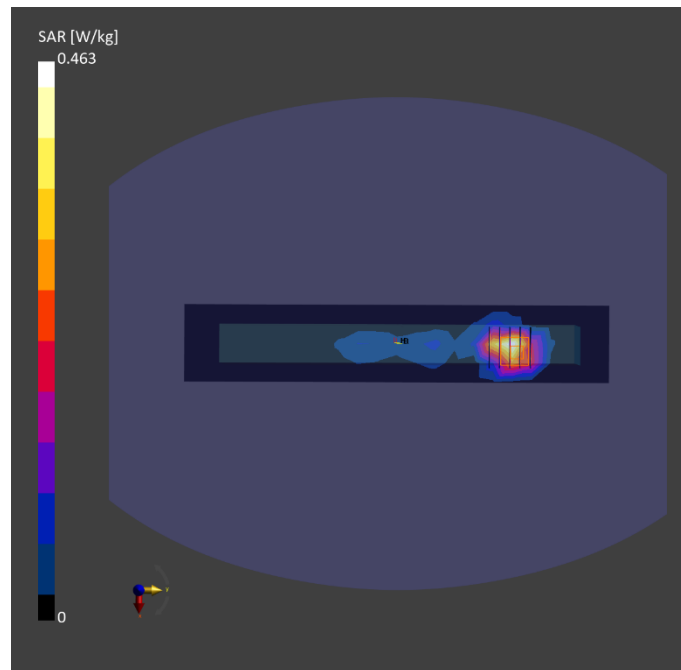
Phantom	Tissue Simulating Liquid	Probe Calibration Date	DAE Calibration Date
ELI V8.0 (20deg probe tilt) - 2179	06T27N2	EX3DV4 - SN3977 / 2024-03-21	DAE4 Sn1743 / 2023-08-17

Scan Setup

	Area Scan	Zoom Scan
Grid Extents [mm]	60.0 x 330.0	32.0 x 32.0 x 30.0
Grid Steps [mm]	15.0 x 15.0	8.0 x 8.0 x 5.0
Sensor Surface [mm]	3.0	1.4
Graded Grid	N/A	Yes
Grading Ratio	N/A	1.4

Measurement Results

	Area Scan	Zoom Scan
psSAR-1g [W/kg]	0.385	0.490
psSAR-10g [W/kg]	0.202	0.240
Power Drift [dB]		0.01
TSL Correction	Positive only	Positive only
M2 / M1 [%]		55.3
Dist 3dB Peak [mm]		8.2



Test Date : 2024-08-09 | Ambient Temp : 22.5 °C | Tissue Temp : 21.3 °C

Test Mode

2_WCDMA IV_RMC12.2K_Top Side_0 mm_Ch1513_Ant Main_Battery1_P-Sensor w/

Device Under Test Properties

Manufacturer or Brand	Model No. or Code Name	Sample No. or IMEI	DUT Type
Getac	ZX10	A005	Tablet

Exposure Conditions

Phantom Section	Band	Group, UID	Frequency [MHz], Channel Number	Conversion Factor	TSL Conductivity [S/m]	TSL Permittivity
Flat	Band 4	WCDMA, 10011 - CAC	1752.600, 1513	8.63	1.38	42.6

Hardware Setup

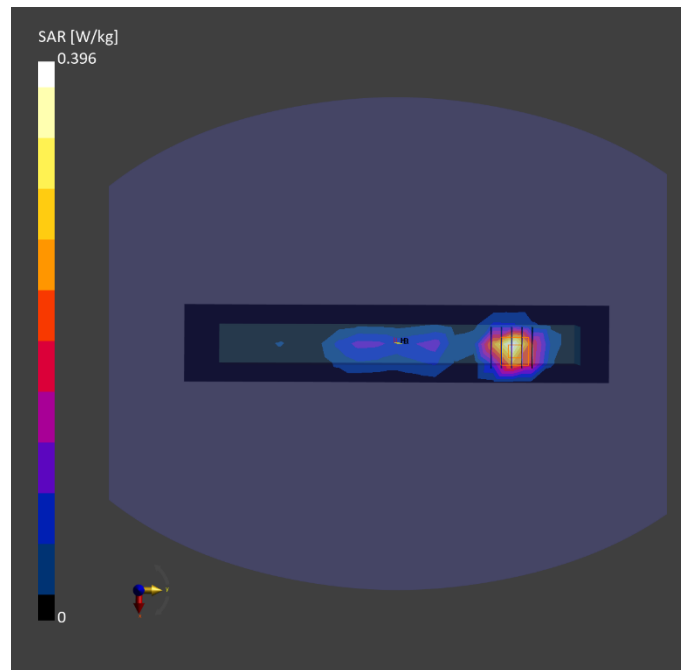
Phantom	Tissue Simulating Liquid	Probe Calibration Date	DAE Calibration Date
ELI V8.0 (20deg probe tilt) - 2179	06T27N2	EX3DV4 - SN3977 / 2024-03-21	DAE4 Sn1743 / 2023-08-17

Scan Setup

	Area Scan	Zoom Scan
Grid Extents [mm]	60.0 x 330.0	32.0 x 32.0 x 30.0
Grid Steps [mm]	15.0 x 15.0	8.0 x 8.0 x 5.0
Sensor Surface [mm]	3.0	1.4
Graded Grid	N/A	Yes
Grading Ratio	N/A	1.4

Measurement Results

	Area Scan	Zoom Scan
psSAR-1g [W/kg]	0.334	0.425
psSAR-10g [W/kg]	0.180	0.217
Power Drift [dB]		0.01
TSL Correction	Positive only	Positive only
M2 / M1 [%]		56.8
Dist 3dB Peak [mm]		8.7



Test Date : 2024-08-10 | Ambient Temp : 22.7 °C | Tissue Temp : 21.4 °C

Test Mode

3_WCDMA V_RMC12.2K_Top Side_0 mm_Ch4233_Ant Main_Battery1_P-Sensor w/

Device Under Test Properties

Manufacturer or Brand	Model No. or Code Name	Sample No. or IMEI	DUT Type
Getac	ZX10	A005	Tablet

Exposure Conditions

Phantom Section	Band	Group, UID	Frequency [MHz], Channel Number	Conversion Factor	TSL Conductivity [S/m]	TSL Permittivity
Flat	Band 5	WCDMA, 10011 - CAC	846.600, 4233	9.51	0.935	40.6

Hardware Setup

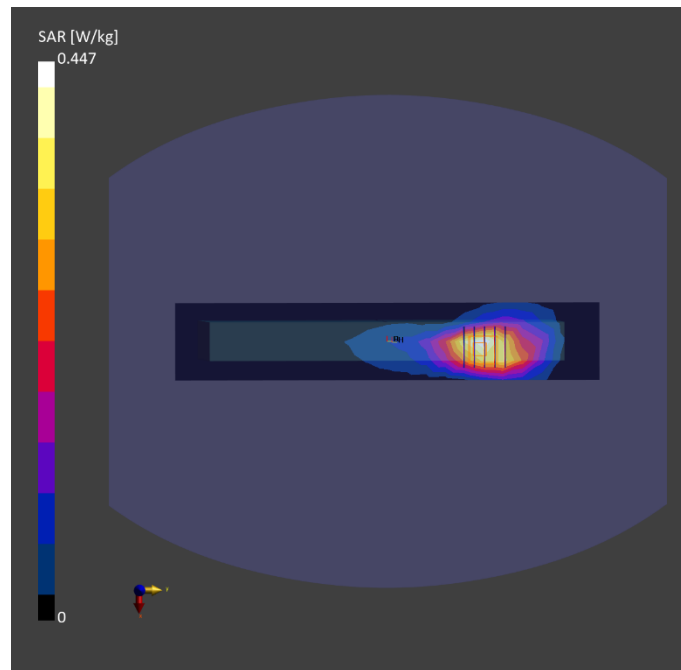
Phantom	Tissue Simulating Liquid	Probe Calibration Date	DAE Calibration Date
ELI V8.0 (20deg probe tilt) - 2179	06T27N2	EX3DV4 - SN3977 / 2024-03-21	DAE4 Sn1743 / 2023-08-17

Scan Setup

	Area Scan	Zoom Scan
Grid Extents [mm]	60.0 x 330.0	32.0 x 32.0 x 30.0
Grid Steps [mm]	15.0 x 15.0	8.0 x 8.0 x 5.0
Sensor Surface [mm]	3.0	1.4
Graded Grid	N/A	Yes
Grading Ratio	N/A	1.4

Measurement Results

	Area Scan	Zoom Scan
psSAR-1g [W/kg]	0.402	0.492
psSAR-10g [W/kg]	0.258	0.271
Power Drift [dB]		0.03
TSL Correction	Positive only	Positive only
M2 / M1 [%]		51.2
Dist 3dB Peak [mm]		8.6



Test Date : 2024-08-11 | Ambient Temp : 22.6 °C | Tissue Temp : 21.3 °C

Test Mode

4_LTE 7_QPSK20M_Top Side_16mm_Ch21350_1RB_OSO_Ant Main_Battery1_P-Sensor w/o

Device Under Test Properties

Manufacturer or Brand	Model No. or Code Name	Sample No. or IMEI	DUT Type
Getac	ZX10	A005	Tablet

Exposure Conditions

Phantom Section	Band	Group, UID	Frequency [MHz], Channel Number	Conversion Factor	TSL Conductivity [S/m]	TSL Permittivity
Flat	Band 7	LTE-FDD, 10169 - CAF	2560.000, 21350	7.58	1.93	40.0

Hardware Setup

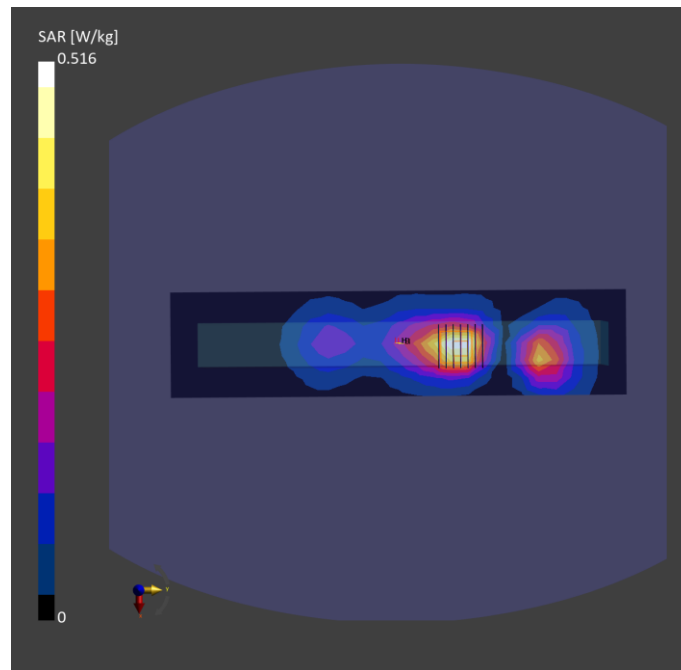
Phantom	Tissue Simulating Liquid	Probe Calibration Date	DAE Calibration Date
ELI V8.0 (20deg probe tilt) - 2179	06T27N2	EX3DV4 - SN3977 / 2024-03-21	DAE4 Sn1743 / 2023-08-17

Scan Setup

	Area Scan	Zoom Scan
Grid Extents [mm]	72.0 x 312.0	30.0 x 30.0 x 30.0
Grid Steps [mm]	12.0 x 12.0	5.0 x 5.0 x 5.0
Sensor Surface [mm]	3.0	1.4
Graded Grid	N/A	Yes
Grading Ratio	N/A	1.4

Measurement Results

	Area Scan	Zoom Scan
psSAR-1g [W/kg]	0.441	0.472
psSAR-10g [W/kg]	0.231	0.246
Power Drift [dB]		-0.01
TSL Correction	Positive only	Positive only
M2 / M1 [%]		52.9
Dist 3dB Peak [mm]		13.7



Test Date : 2024-08-12 | Ambient Temp : 22.8 °C | Tissue Temp : 21.5 °C

Test Mode

5_LTE 12_QPSK10M_Top Side_0mm_Ch23130_1RB_OS0_Ant Main_Battery1_P-Sensor w/

Device Under Test Properties

Manufacturer or Brand	Model No. or Code Name	Sample No. or IMEI	DUT Type
Getac	ZX10	A005	Tablet

Exposure Conditions

Phantom Section	Band	Group, UID	Frequency [MHz], Channel Number	Conversion Factor	TSL Conductivity [S/m]	TSL Permittivity
Flat	Band 12	LTE-FDD, 10175 - CAH	711.000, 23130	9.96	0.915	42.4

Hardware Setup

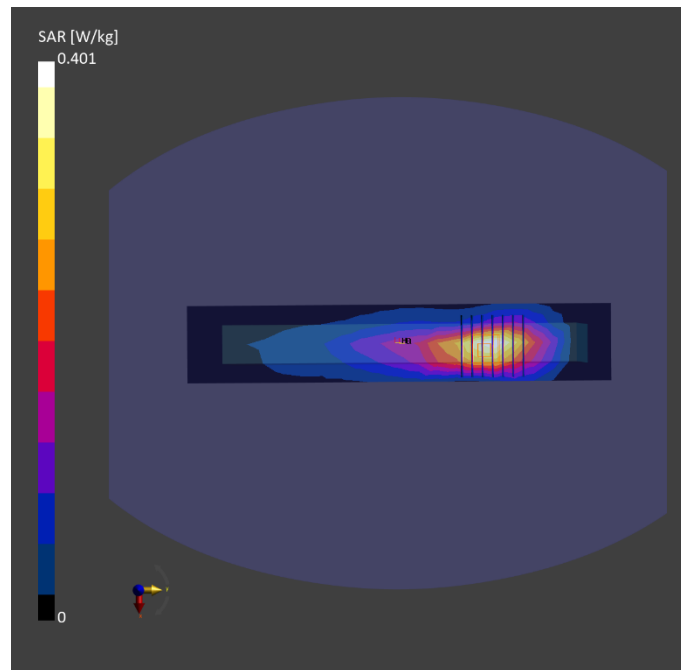
Phantom	Tissue Simulating Liquid	Probe Calibration Date	DAE Calibration Date
ELI V8.0 (20deg probe tilt) - 2179	06T27N2	EX3DV4 - SN3977 / 2024-03-21	DAE4 Sn1743 / 2023-08-17

Scan Setup

	Area Scan	Zoom Scan
Grid Extents [mm]	60.0 x 330.0	32.0 x 32.0 x 30.0
Grid Steps [mm]	15.0 x 15.0	8.0 x 8.0 x 5.0
Sensor Surface [mm]	3.0	1.4
Graded Grid	N/A	Yes
Grading Ratio	N/A	1.4

Measurement Results

	Area Scan	Zoom Scan
psSAR-1g [W/kg]	0.358	0.419
psSAR-10g [W/kg]	0.232	0.237
Power Drift [dB]		0.01
TSL Correction	Positive only	Positive only
M2 / M1 [%]		55.8
Dist 3dB Peak [mm]		9.6



Test Date : 2024-08-12 | Ambient Temp : 22.8 °C | Tissue Temp : 21.5 °C

Test Mode

6_LTE 13_QPSK10M_Top Side_0mm_Ch23230_1RB_OS0_Ant Main_Battery1_P-Sensor w/

Device Under Test Properties

Manufacturer or Brand	Model No. or Code Name	Sample No. or IMEI	DUT Type
Getac	ZX10	A005	Tablet

Exposure Conditions

Phantom Section	Band	Group, UID	Frequency [MHz], Channel Number	Conversion Factor	TSL Conductivity [S/m]	TSL Permittivity
Flat	Band 13	LTE-FDD, 10175 - CAH	782.000, 23230	9.96	0.940	42.2

Hardware Setup

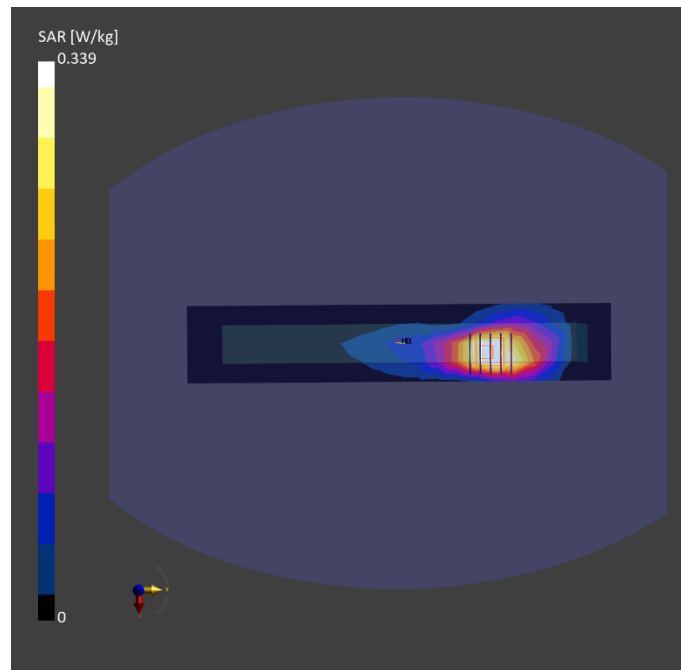
Phantom	Tissue Simulating Liquid	Probe Calibration Date	DAE Calibration Date
ELI V8.0 (20deg probe tilt) - 2179	06T27N2	EX3DV4 - SN3977 / 2024-03-21	DAE4 Sn1743 / 2023-08-17

Scan Setup

	Area Scan	Zoom Scan
Grid Extents [mm]	60.0 x 330.0	32.0 x 32.0 x 30.0
Grid Steps [mm]	15.0 x 15.0	8.0 x 8.0 x 5.0
Sensor Surface [mm]	3.0	1.4
Graded Grid	N/A	Yes
Grading Ratio	N/A	1.4

Measurement Results

	Area Scan	Zoom Scan
psSAR-1g [W/kg]	0.334	0.421
psSAR-10g [W/kg]	0.220	0.230
Power Drift [dB]		-0.03
TSL Correction	Positive only	Positive only
M2 / M1 [%]		50.2
Dist 3dB Peak [mm]		8.4



Test Date : 2024-08-12 | Ambient Temp : 22.8 °C | Tissue Temp : 21.5 °C

Test Mode

7_LTE 14_QPSK10M_Top Side_0mm_Ch23330_1RB_OS0_Ant Main_Battery1_P-Sensor w/

Device Under Test Properties

Manufacturer or Brand	Model No. or Code Name	Sample No. or IMEI	DUT Type
Getac	ZX10	A005	Tablet

Exposure Conditions

Phantom Section	Band	Group, UID	Frequency [MHz], Channel Number	Conversion Factor	TSL Conductivity [S/m]	TSL Permittivity
Flat	Band 14	LTE-FDD, 10175 - CAH	793.000, 23330	9.96	0.944	42.1

Hardware Setup

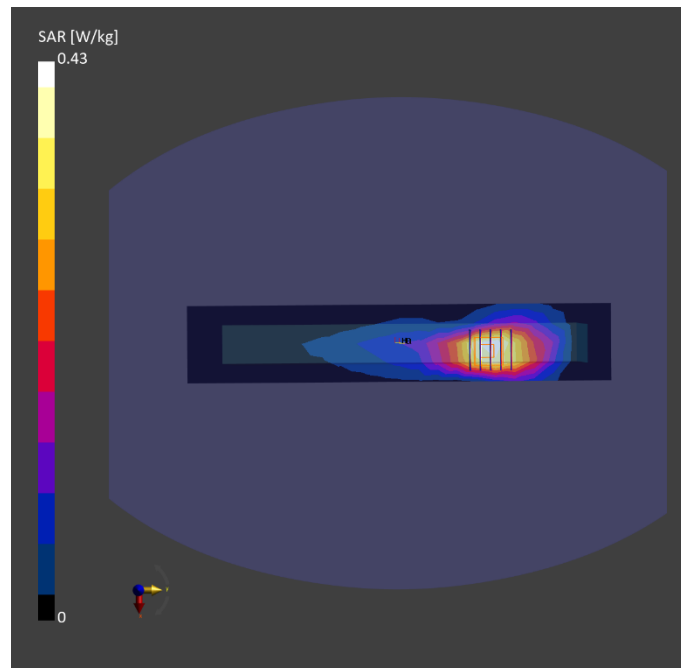
Phantom	Tissue Simulating Liquid	Probe Calibration Date	DAE Calibration Date
ELI V8.0 (20deg probe tilt) - 2179	06T27N2	EX3DV4 - SN3977 / 2024-03-21	DAE4 Sn1743 / 2023-08-17

Scan Setup

	Area Scan	Zoom Scan
Grid Extents [mm]	60.0 x 330.0	32.0 x 32.0 x 30.0
Grid Steps [mm]	15.0 x 15.0	8.0 x 8.0 x 5.0
Sensor Surface [mm]	3.0	1.4
Graded Grid	N/A	Yes
Grading Ratio	N/A	1.4

Measurement Results

	Area Scan	Zoom Scan
psSAR-1g [W/kg]	0.407	0.486
psSAR-10g [W/kg]	0.267	0.269
Power Drift [dB]		0.01
TSL Correction	Positive only	Positive only
M2 / M1 [%]		52.0
Dist 3dB Peak [mm]		8.7



Test Date : 2024-08-09 | Ambient Temp : 22.5 °C | Tissue Temp : 21.3 °C

Test Mode

8_LTE 25_QPSK20M_Top Side_0mm_Ch26590_1RB_OS0_Ant Main_Battery1_P-Sensor w/

Device Under Test Properties

Manufacturer or Brand	Model No. or Code Name	Sample No. or IMEI	DUT Type
Getac	ZX10	A005	Tablet

Exposure Conditions

Phantom Section	Band	Group, UID	Frequency [MHz], Channel Number	Conversion Factor	TSL Conductivity [S/m]	TSL Permittivity
Flat	Band 25	LTE-FDD, 10169 - CAF	1905.000, 26590	8.03	1.46	42.4

Hardware Setup

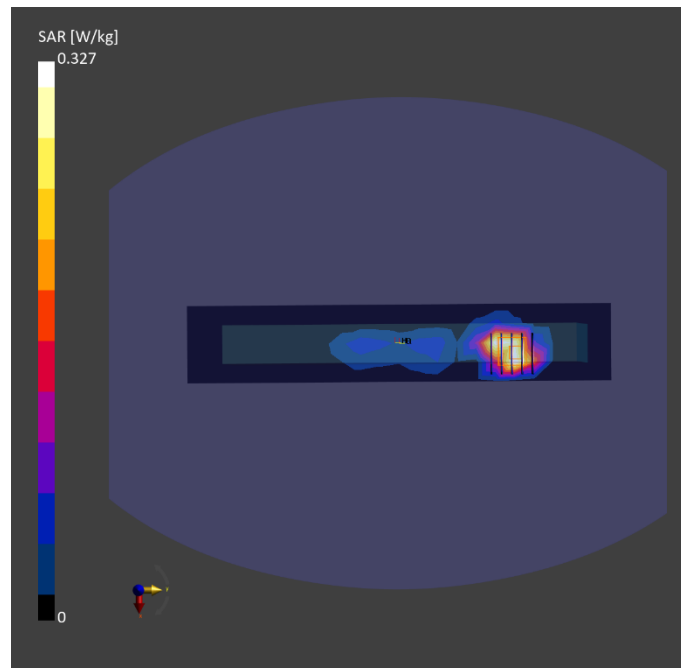
Phantom	Tissue Simulating Liquid	Probe Calibration Date	DAE Calibration Date
ELI V8.0 (20deg probe tilt) - 2179	06T27N2	EX3DV4 - SN3977 / 2024-03-21	DAE4 Sn1743 / 2023-08-17

Scan Setup

	Area Scan	Zoom Scan
Grid Extents [mm]	60.0 x 330.0	32.0 x 32.0 x 30.0
Grid Steps [mm]	15.0 x 15.0	8.0 x 8.0 x 5.0
Sensor Surface [mm]	3.0	1.4
Graded Grid	N/A	Yes
Grading Ratio	N/A	1.4

Measurement Results

	Area Scan	Zoom Scan
psSAR-1g [W/kg]	0.304	0.412
psSAR-10g [W/kg]	0.167	0.200
Power Drift [dB]		0.01
TSL Correction	Positive only	Positive only
M2 / M1 [%]		50.7
Dist 3dB Peak [mm]		8.4



Test Date : 2024-08-10 | Ambient Temp : 22.7 °C | Tissue Temp : 21.4 °C

Test Mode

9_LTE 26_QPSK15M_Top Side_0mm_Ch26965_1RB_OS0_Ant Main_Battery1_P-Sensor w/

Device Under Test Properties

Manufacturer or Brand	Model No. or Code Name	Sample No. or IMEI	DUT Type
Getac	ZX10	A005	Tablet

Exposure Conditions

Phantom Section	Band	Group, UID	Frequency [MHz], Channel Number	Conversion Factor	TSL Conductivity [S/m]	TSL Permittivity
Flat	Band 26	LTE-FDD, 10181 - CAF	841.500, 26965	9.51	0.933	40.6

Hardware Setup

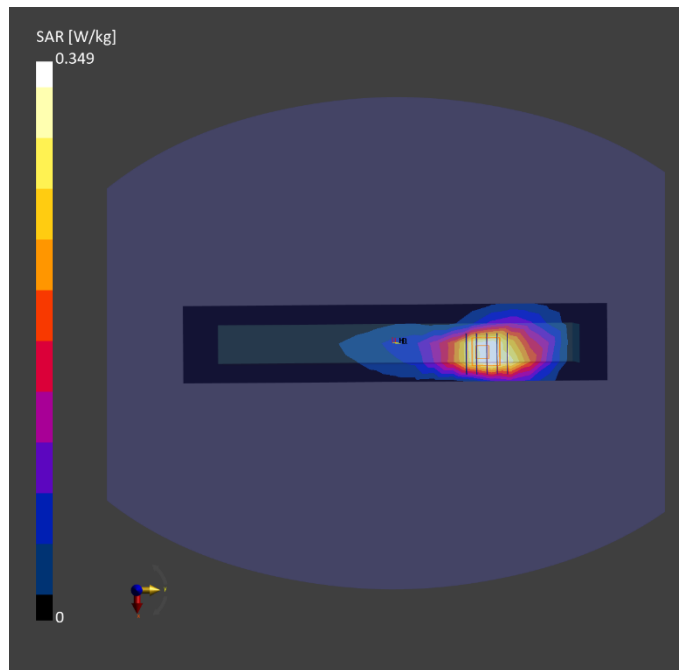
Phantom	Tissue Simulating Liquid	Probe Calibration Date	DAE Calibration Date
ELI V8.0 (20deg probe tilt) - 2179	06T27N2	EX3DV4 - SN3977 / 2024-03-21	DAE4 Sn1743 / 2023-08-17

Scan Setup

	Area Scan	Zoom Scan
Grid Extents [mm]	60.0 x 330.0	32.0 x 32.0 x 30.0
Grid Steps [mm]	15.0 x 15.0	8.0 x 8.0 x 5.0
Sensor Surface [mm]	3.0	1.4
Graded Grid	N/A	Yes
Grading Ratio	N/A	1.4

Measurement Results

	Area Scan	Zoom Scan
psSAR-1g [W/kg]	0.342	0.432
psSAR-10g [W/kg]	0.225	0.235
Power Drift [dB]		0.01
TSL Correction	Positive only	Positive only
M2 / M1 [%]		50.5
Dist 3dB Peak [mm]		8.4



Test Date : 2024-08-11 | Ambient Temp : 22.6 °C | Tissue Temp : 21.3 °C

Test Mode

10_LTE 38_QPSK20M_Top Side_0mm_Ch38150_1RB_OS0_Ant Main_Battery1_P-Sensor w/

Device Under Test Properties

Manufacturer or Brand	Model No. or Code Name	Sample No. or IMEI	DUT Type
Getac	ZX10	A005	Tablet

Exposure Conditions

Phantom Section	Band	Group, UID	Frequency [MHz], Channel Number	Conversion Factor	TSL Conductivity [S/m]	TSL Permittivity
Flat	Band 38	LTE-TDD, 10172 - CAH	2610.000, 38150	7.58	1.97	39.9

Hardware Setup

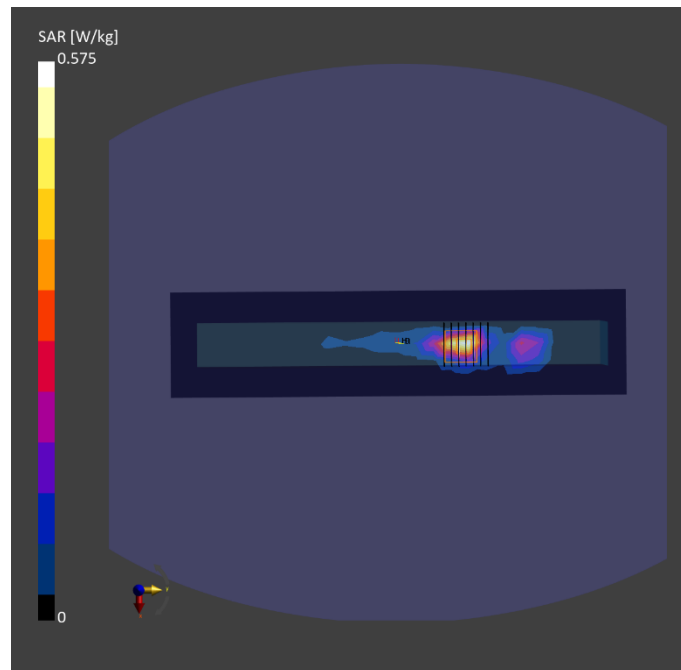
Phantom	Tissue Simulating Liquid	Probe Calibration Date	DAE Calibration Date
ELI V8.0 (20deg probe tilt) - 2179	06T27N2	EX3DV4 - SN3977 / 2024-03-21	DAE4 Sn1743 / 2023-08-17

Scan Setup

	Area Scan	Zoom Scan
Grid Extents [mm]	72.0 x 312.0	30.0 x 30.0 x 30.0
Grid Steps [mm]	12.0 x 12.0	5.0 x 5.0 x 5.0
Sensor Surface [mm]	3.0	1.4
Graded Grid	N/A	Yes
Grading Ratio	N/A	1.4

Measurement Results

	Area Scan	Zoom Scan
psSAR-1g [W/kg]	0.417	0.484
psSAR-10g [W/kg]	0.163	0.179
Power Drift [dB]		0.02
TSL Correction	Positive only	Positive only
M2 / M1 [%]		44.1
Dist 3dB Peak [mm]		6.0



Test Date : 2024-08-11 | Ambient Temp : 22.6 °C | Tissue Temp : 21.3 °C

Test Mode

11_LTE 41_QPSK20M_Top Side_0mm_Ch41490_1RB_OS0_Ant Main_Battery1_P-Sensor w/

Device Under Test Properties

Manufacturer or Brand	Model No. or Code Name	Sample No. or IMEI	DUT Type
Getac	ZX10	A005	Tablet

Exposure Conditions

Phantom Section	Band	Group, UID	Frequency [MHz], Channel Number	Conversion Factor	TSL Conductivity [S/m]	TSL Permittivity
Flat	Band 41	LTE-TDD, 10172 - CAH	2680.000, 41490	7.58	2.03	39.8

Hardware Setup

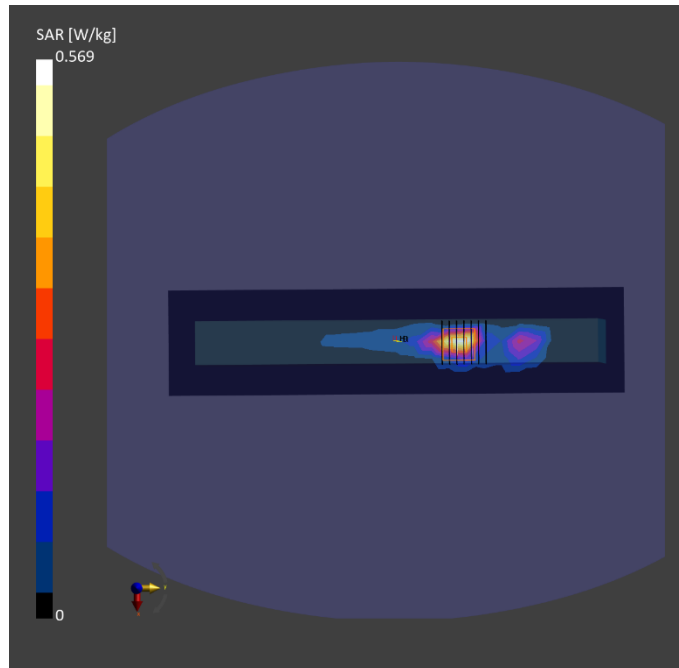
Phantom	Tissue Simulating Liquid	Probe Calibration Date	DAE Calibration Date
ELI V8.0 (20deg probe tilt) - 2179	06T27N2	EX3DV4 - SN3977 / 2024-03-21	DAE4 Sn1743 / 2023-08-17

Scan Setup

	Area Scan	Zoom Scan
Grid Extents [mm]	72.0 x 312.0	30.0 x 30.0 x 30.0
Grid Steps [mm]	12.0 x 12.0	5.0 x 5.0 x 5.0
Sensor Surface [mm]	3.0	1.4
Graded Grid	N/A	Yes
Grading Ratio	N/A	1.4

Measurement Results

	Area Scan	Zoom Scan
psSAR-1g [W/kg]	0.421	0.479
psSAR-10g [W/kg]	0.164	0.176
Power Drift [dB]		-0.05
TSL Correction	Positive only	Positive only
M2 / M1 [%]		44.1
Dist 3dB Peak [mm]		6.0



Test Date : 2024-08-13 | Ambient Temp : 22.5 °C | Tissue Temp : 21.2 °C

Test Mode

12_LTE 42_QPSK20M_Top Side_0mm_Ch43490_1RB_OS0_Ant Main_Battery1_P-Sensor w/

Device Under Test Properties

Manufacturer or Brand	Model No. or Code Name	Sample No. or IMEI	DUT Type
Getac	ZX10	A005	Tablet

Exposure Conditions

Phantom Section	Band	Group, UID	Frequency [MHz], Channel Number	Conversion Factor	TSL Conductivity [S/m]	TSL Permittivity
Flat	Band 42	LTE-TDD, 10172 - CAH	3590.000, 43490	7.09	2.83	37.6

Hardware Setup

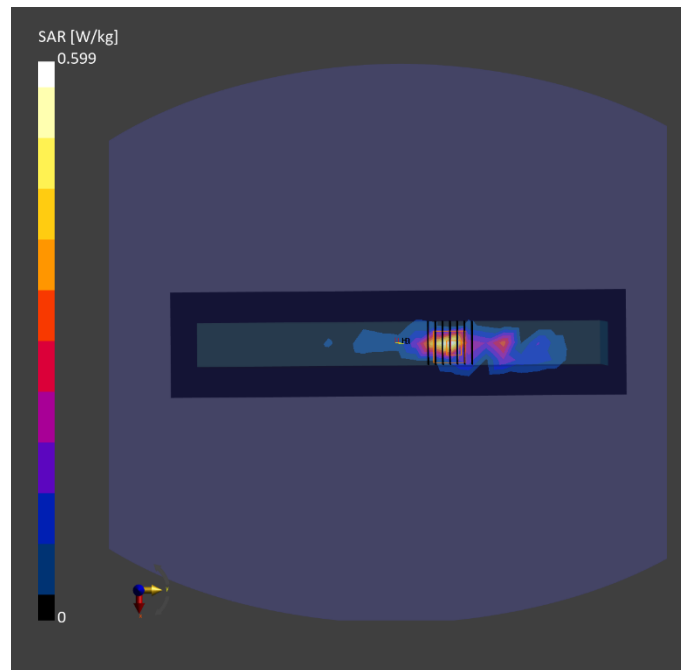
Phantom	Tissue Simulating Liquid	Probe Calibration Date	DAE Calibration Date
ELI V8.0 (20deg probe tilt) - 2179	33T50N2	EX3DV4 - SN3977 / 2024-03-21	DAE4 Sn1743 / 2023-08-17

Scan Setup

	Area Scan	Zoom Scan
Grid Extents [mm]	72.0 x 312.0	30.0 x 30.0 x 28.0
Grid Steps [mm]	12.0 x 12.0	5.0 x 5.0 x 2.5
Sensor Surface [mm]	3.0	1.4
Graded Grid	N/A	Yes
Grading Ratio	N/A	1.4

Measurement Results

	Area Scan	Zoom Scan
psSAR-1g [W/kg]	0.395	0.453
psSAR-10g [W/kg]	0.135	0.143
Power Drift [dB]		0.02
TSL Correction	Positive only	Positive only
M2 / M1 [%]		59.7
Dist 3dB Peak [mm]		5.9



Test Date : 2024-08-13 | Ambient Temp : 22.5 °C | Tissue Temp : 21.2 °C

Test Mode

13_LTE 43_QPSK20M_Top Side_0mm_Ch44490_1RB_OS0_Ant Main_Battery1_P-Sensor w/

Device Under Test Properties

Manufacturer or Brand	Model No. or Code Name	Sample No. or IMEI	DUT Type
Getac	ZX10	A005	Tablet

Exposure Conditions

Phantom Section	Band	Group, UID	Frequency [MHz], Channel Number	Conversion Factor	TSL Conductivity [S/m]	TSL Permittivity
Flat	Band 43	LTE-TDD, 10172 - CAH	3690.000, 44490	6.55	2.92	37.4

Hardware Setup

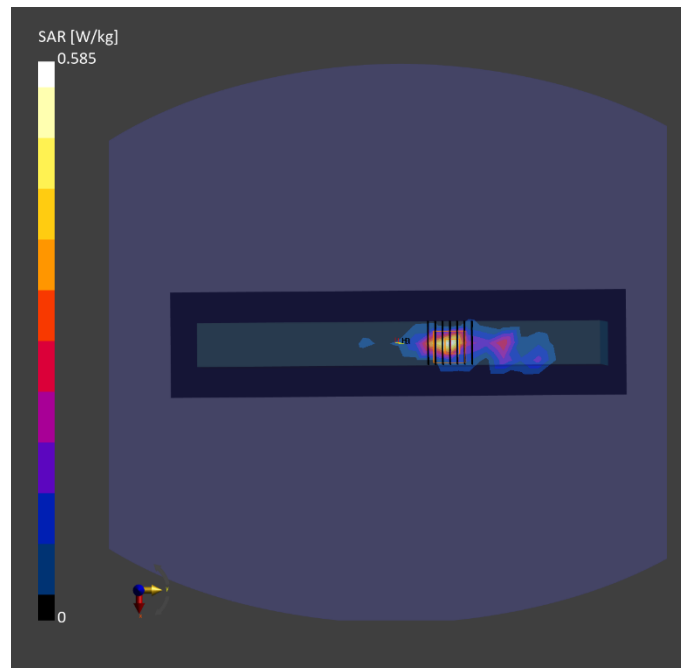
Phantom	Tissue Simulating Liquid	Probe Calibration Date	DAE Calibration Date
ELI V8.0 (20deg probe tilt) - 2179	33T50N2	EX3DV4 - SN3977 / 2024-03-21	DAE4 Sn1743 / 2023-08-17

Scan Setup

	Area Scan	Zoom Scan
Grid Extents [mm]	72.0 x 312.0	30.0 x 30.0 x 28.0
Grid Steps [mm]	12.0 x 12.0	5.0 x 5.0 x 2.5
Sensor Surface [mm]	3.0	1.4
Graded Grid	N/A	Yes
Grading Ratio	N/A	1.4

Measurement Results

	Area Scan	Zoom Scan
psSAR-1g [W/kg]	0.383	0.425
psSAR-10g [W/kg]	0.128	0.135
Power Drift [dB]		0.01
TSL Correction	Positive only	Positive only
M2 / M1 [%]		60.7
Dist 3dB Peak [mm]		5.9



Test Date : 2024-08-13 | Ambient Temp : 22.5 °C | Tissue Temp : 21.2 °C

Test Mode

14_LTE 48_QPSK20M_Top Side_0mm_Ch56640_1RB_OS0_Ant Main_Battery1_P-Sensor w/

Device Under Test Properties

Manufacturer or Brand	Model No. or Code Name	Sample No. or IMEI	DUT Type
Getac	ZX10	A005	Tablet

Exposure Conditions

Phantom Section	Band	Group, UID	Frequency [MHz], Channel Number	Conversion Factor	TSL Conductivity [S/m]	TSL Permittivity
Flat	Band 48	LTE-TDD, 10172 - CAH	3690.000, 56640	6.55	2.92	37.4

Hardware Setup

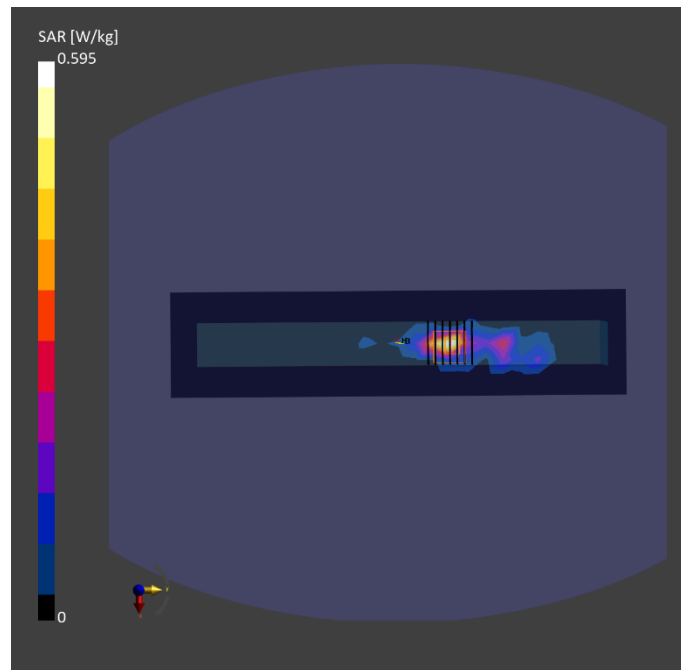
Phantom	Tissue Simulating Liquid	Probe Calibration Date	DAE Calibration Date
ELI V8.0 (20deg probe tilt) - 2179	33T50N2	EX3DV4 - SN3977 / 2024-03-21	DAE4 Sn1743 / 2023-08-17

Scan Setup

	Area Scan	Zoom Scan
Grid Extents [mm]	72.0 x 312.0	30.0 x 30.0 x 28.0
Grid Steps [mm]	12.0 x 12.0	5.0 x 5.0 x 2.5
Sensor Surface [mm]	3.0	1.4
Graded Grid	N/A	Yes
Grading Ratio	N/A	1.4

Measurement Results

	Area Scan	Zoom Scan
psSAR-1g [W/kg]	0.389	0.430
psSAR-10g [W/kg]	0.130	0.137
Power Drift [dB]		-0.01
TSL Correction	Positive only	Positive only
M2 / M1 [%]		60.4
Dist 3dB Peak [mm]		5.9



Test Date : 2024-08-09 | Ambient Temp : 22.5 °C | Tissue Temp : 21.3 °C

Test Mode

15_LTE 66_QPSK20M_Top Side_0mm_Ch132572_1RB_OS0_Ant Main_Battery1_P-Sensor w/

Device Under Test Properties

Manufacturer or Brand	Model No. or Code Name	Sample No. or IMEI	DUT Type
Getac	ZX10	A005	Tablet

Exposure Conditions

Phantom Section	Band	Group, UID	Frequency [MHz], Channel Number	Conversion Factor	TSL Conductivity [S/m]	TSL Permittivity
Flat	Band 66	LTE-FDD, 10169 - CAF	1770.000, 132572	8.63	1.38	42.6

Hardware Setup

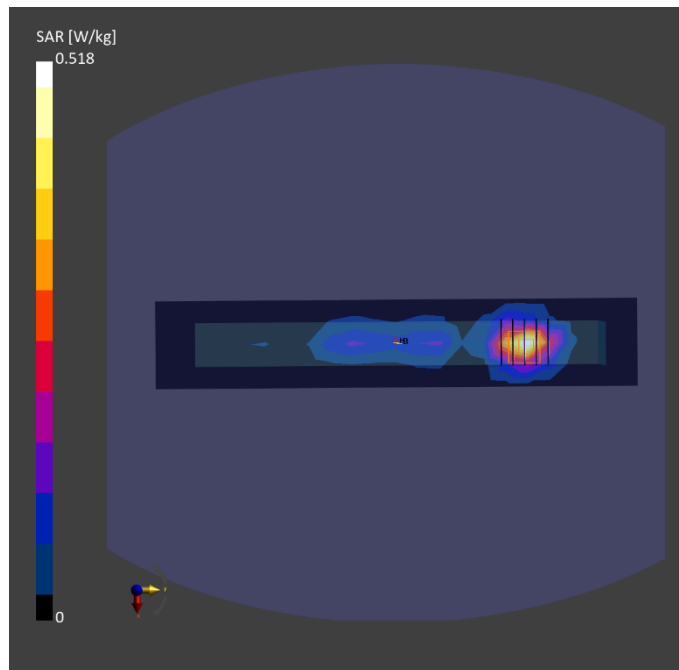
Phantom	Tissue Simulating Liquid	Probe Calibration Date	DAE Calibration Date
ELI V8.0 (20deg probe tilt) - 2179	06T27N2	EX3DV4 - SN3977 / 2024-03-21	DAE4 Sn1743 / 2023-08-17

Scan Setup

	Area Scan	Zoom Scan
Grid Extents [mm]	60.0 x 330.0	32.0 x 32.0 x 30.0
Grid Steps [mm]	15.0 x 15.0	8.0 x 8.0 x 5.0
Sensor Surface [mm]	3.0	1.4
Graded Grid	N/A	Yes
Grading Ratio	N/A	1.4

Measurement Results

	Area Scan	Zoom Scan
psSAR-1g [W/kg]	0.417	0.463
psSAR-10g [W/kg]	0.213	0.240
Power Drift [dB]		0.01
TSL Correction	Positive only	Positive only
M2 / M1 [%]		57.0
Dist 3dB Peak [mm]		9.4



Test Date : 2024-08-12 | Ambient Temp : 22.8 °C | Tissue Temp : 21.5 °C

Test Mode

16_LTE 71_QPSK20M_Top Side_0mm_Ch133372_1RB_OS0_Ant Main_Battery1_P-Sensor w/

Device Under Test Properties

Manufacturer or Brand	Model No. or Code Name	Sample No. or IMEI	DUT Type
Getac	ZX10	A005	Tablet

Exposure Conditions

Phantom Section	Band	Group, UID	Frequency [MHz], Channel Number	Conversion Factor	TSL Conductivity [S/m]	TSL Permittivity
Flat	Band 71	LTE-FDD, 10169 - CAF	688.000, 133372	9.96	0.909	42.5

Hardware Setup

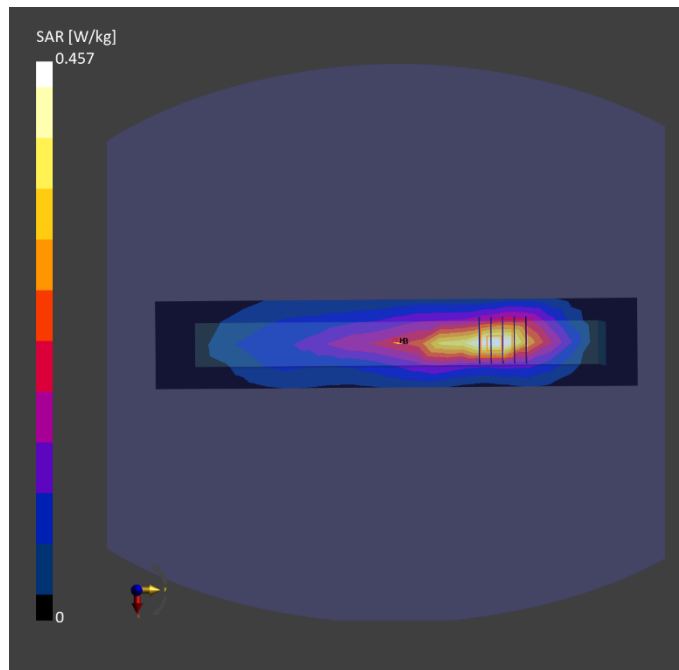
Phantom	Tissue Simulating Liquid	Probe Calibration Date	DAE Calibration Date
ELI V8.0 (20deg probe tilt) - 2179	06T27N2	EX3DV4 - SN3977 / 2024-03-21	DAE4 Sn1743 / 2023-08-17

Scan Setup

	Area Scan	Zoom Scan
Grid Extents [mm]	60.0 x 330.0	32.0 x 32.0 x 30.0
Grid Steps [mm]	15.0 x 15.0	8.0 x 8.0 x 5.0
Sensor Surface [mm]	3.0	1.4
Graded Grid	N/A	Yes
Grading Ratio	N/A	1.4

Measurement Results

	Area Scan	Zoom Scan
psSAR-1g [W/kg]	0.395	0.411
psSAR-10g [W/kg]	0.243	0.239
Power Drift [dB]		-0.01
TSL Correction	Positive only	Positive only
M2 / M1 [%]		56.5
Dist 3dB Peak [mm]		11.2



Test Date : 2024-07-31 | Ambient Temp : 21.9 °C | Tissue Temp : 20.9 °C

Test Mode

17_WLAN2.4G_802.11b_Right Side_0 mm_Ch6_Ant 1_Battery1

Device Under Test Properties

Manufacturer or Brand	Model No. or Code Name	Sample No. or IMEI	DUT Type
Getac	ZX10	A006	Tablet

Exposure Conditions

Phantom Section	Band	Group, UID	Frequency [MHz], Channel Number	Conversion Factor	TSL Conductivity [S/m]	TSL Permittivity
Flat	WLAN 2.4GHz	WLAN, 10012 - CAB	2437.000, 6	7.05	1.78	39.9

Hardware Setup

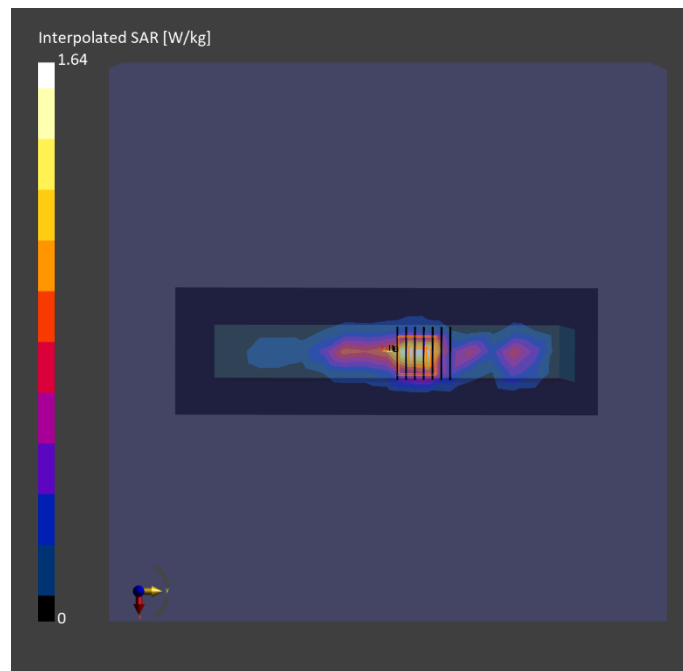
Phantom	Tissue Simulating Liquid	Probe Calibration Date	DAE Calibration Date
ELI V8.0 (20deg probe tilt) - 2180	06T27N2	EX3DV4 - SN7757 / 2023-08-22	DAE4 Sn1669 / 2024-05-16

Scan Setup

	Area Scan	Zoom Scan
Grid Extents [mm]	60.0 x 228.0	30.0 x 30.0 x 30.0
Grid Steps [mm]	12.0 x 12.0	5.0 x 5.0 x 5.0
Sensor Surface [mm]	3.0	1.4
Graded Grid	N/A	Yes
Grading Ratio	N/A	1.5

Measurement Results

	Area Scan	Zoom Scan
psSAR-1g [W/kg]	0.671	0.721
psSAR-10g [W/kg]	0.307	0.308
Power Drift [dB]		-0.01
TSL Correction	Positive only	Positive only
M2 / M1 [%]		35.0
Dist 3dB Peak [mm]		6.0



Test Date : 2024-08-01 | Ambient Temp : 22.1 °C | Tissue Temp : 21.2 °C

Test Mode

18_WLAN5.3G_802.11ac_VHT160_Right Side_0 mm_Ch50_Ant 0+1_Battery1

Device Under Test Properties

Manufacturer or Brand	Model No. or Code Name	Sample No. or IMEI	DUT Type
Getac	ZX10	A006	Tablet

Exposure Conditions

Phantom Section	Band	Group, UID	Frequency [MHz], Channel Number	Conversion Factor	TSL Conductivity [S/m]	TSL Permittivity
Flat	WLAN 5GHz	WLAN, 10554 - AAE	5250.000, 50	5.02	4.54	36.3

Hardware Setup

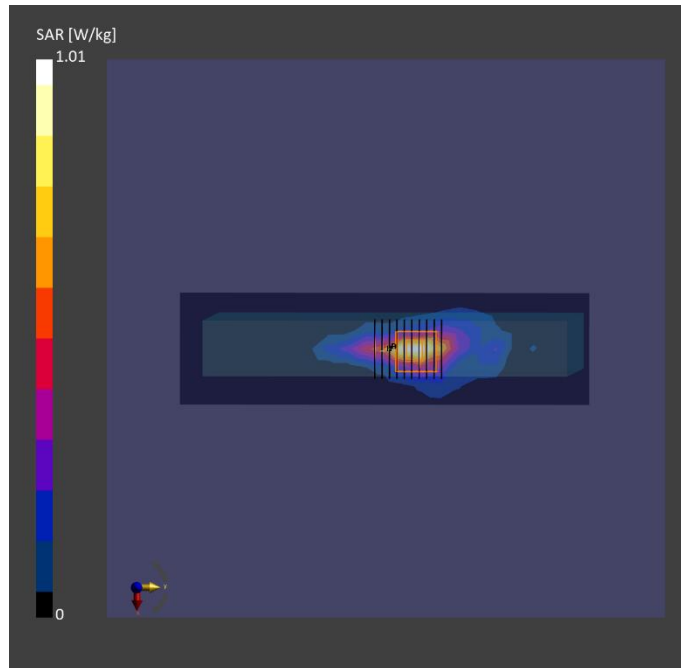
Phantom	Tissue Simulating Liquid	Probe Calibration Date	DAE Calibration Date
ELI V8.0 (20deg probe tilt) - 2180	51T72N1	EX3DV4 - SN7757 / 2023-08-22	DAE4 Sn1669 / 2024-05-16

Scan Setup

	Area Scan	Zoom Scan
Grid Extents [mm]	50.0 x 210.0	24.0 x 24.0 x 22.0
Grid Steps [mm]	10.0 x 10.0	4.0 x 4.0 x 1.4
Sensor Surface [mm]	3.0	1.4
Graded Grid	N/A	Yes
Grading Ratio	N/A	1.4

Measurement Results

	Area Scan	Zoom Scan
psSAR-1g [W/kg]	0.714	0.736
psSAR-10g [W/kg]	0.244	0.236
Power Drift [dB]		-0.03
TSL Correction	Positive only	Positive only
M2 / M1 [%]		65.9
Dist 3dB Peak [mm]		6.9



Test Date : 2024-08-01 | Ambient Temp : 22.1 °C | Tissue Temp : 21.2 °C

Test Mode

19_WLAN5.6G_802.11ac_VHT160_Right Side_0 mm_Ch114_Ant 1_Battery1

Device Under Test Properties

Manufacturer or Brand	Model No. or Code Name	Sample No. or IMEI	DUT Type
Getac	ZX10	A006	Tablet

Exposure Conditions

Phantom Section	Band	Group, UID	Frequency [MHz], Channel Number	Conversion Factor	TSL Conductivity [S/m]	TSL Permittivity
Flat	WLAN 5GHz	WLAN, 10554 - AAE	5570.000, 114	4.29	4.89	35.7

Hardware Setup

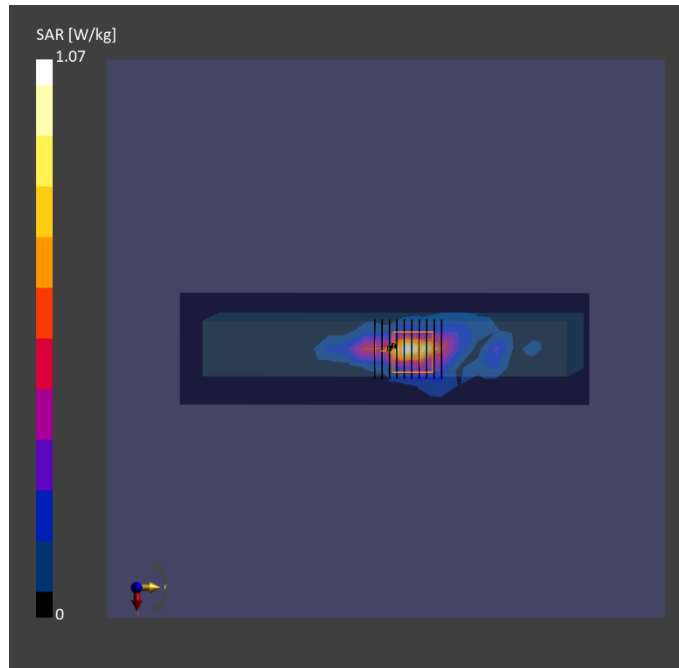
Phantom	Tissue Simulating Liquid	Probe Calibration Date	DAE Calibration Date
ELI V8.0 (20deg probe tilt) - 2180	51T72N1	EX3DV4 - SN7757 / 2023-08-22	DAE4 Sn1669 / 2024-05-16

Scan Setup

	Area Scan	Zoom Scan
Grid Extents [mm]	50.0 x 210.0	24.0 x 24.0 x 22.0
Grid Steps [mm]	10.0 x 10.0	4.0 x 4.0 x 1.4
Sensor Surface [mm]	3.0	1.4
Graded Grid	N/A	Yes
Grading Ratio	N/A	1.4

Measurement Results

	Area Scan	Zoom Scan
psSAR-1g [W/kg]	0.716	0.704
psSAR-10g [W/kg]	0.232	0.219
Power Drift [dB]		-0.03
TSL Correction	Positive only	Positive only
M2 / M1 [%]		62.9
Dist 3dB Peak [mm]		6.6



Test Date : 2024-08-01 | Ambient Temp : 22.1 °C | Tissue Temp : 21.2 °C

Test Mode

20_WLAN5.8G_802.11ac_VHT80_Top Side_0 mm_Ch155_Ant 0+1_Battery1

Device Under Test Properties

Manufacturer or Brand	Model No. or Code Name	Sample No. or IMEI	DUT Type
Getac	ZX10	A006	Tablet

Exposure Conditions

Phantom Section	Band	Group, UID	Frequency [MHz], Channel Number	Conversion Factor	TSL Conductivity [S/m]	TSL Permittivity
Flat	WLAN 5GHz	WLAN, 10544 - AAD	5775.000, 155	4.36	5.13	35.4

Hardware Setup

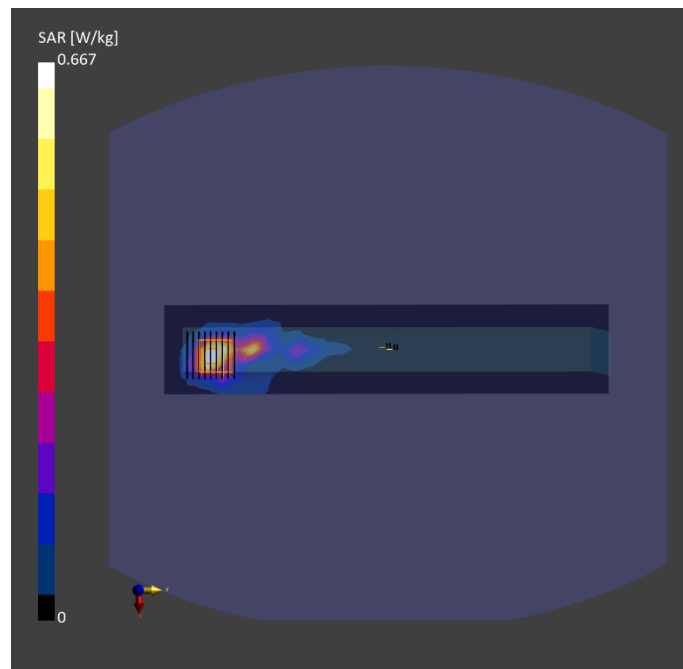
Phantom	Tissue Simulating Liquid	Probe Calibration Date	DAE Calibration Date
ELI V8.0 (20deg probe tilt) - 2180	51T72N1	EX3DV4 - SN7757 / 2023-08-22	DAE4 Sn1669 / 2024-05-16

Scan Setup

	Area Scan	Zoom Scan
Grid Extents [mm]	50.0 x 300.0	24.0 x 24.0 x 22.0
Grid Steps [mm]	10.0 x 10.0	4.0 x 4.0 x 1.4
Sensor Surface [mm]	3.0	1.4
Graded Grid	N/A	Yes
Grading Ratio	N/A	1.4

Measurement Results

	Area Scan	Zoom Scan
psSAR-1g [W/kg]	0.532	0.714
psSAR-10g [W/kg]	0.186	0.224
Power Drift [dB]		0.01
TSL Correction	Positive only	Positive only
M2 / M1 [%]		54.9
Dist 3dB Peak [mm]		6.6



Test Date : 2024-07-31 | Ambient Temp : 21.9 °C | Tissue Temp : 20.9 °C

Test Mode

21_U-NII 6_802.11ax HE160_Top Side_0 mm_Ch111_Ant 0+1_Battery1

Device Under Test Properties

Manufacturer or Brand	Model No. or Code Name	Sample No. or IMEI	DUT Type
Getac	ZX10	A006	Tablet

Exposure Conditions

Phantom Section	Band	Group, UID	Frequency [MHz], Channel Number	Conversion Factor	TSL Conductivity [S/m]	TSL Permittivity
Flat	U-NII-6	WLAN, 10755 - AAC	6505.000, 111	4.47	5.99	34.2

Hardware Setup

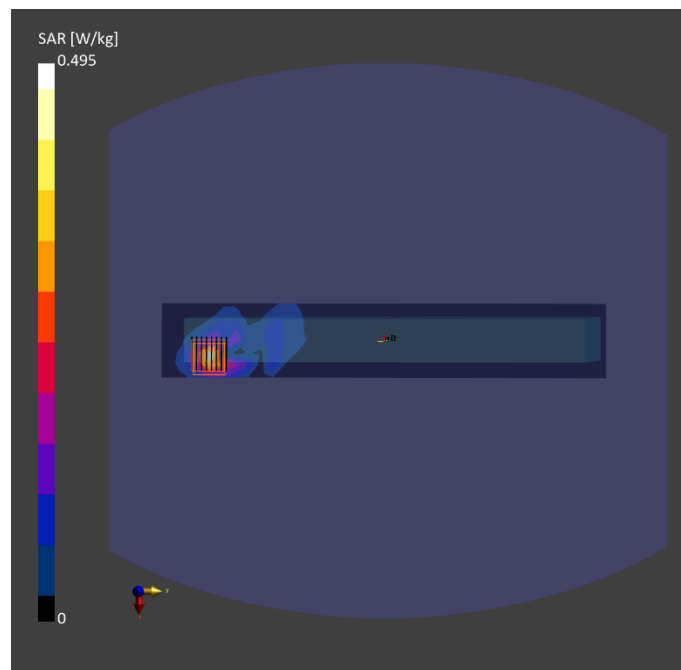
Phantom	Tissue Simulating Liquid	Probe Calibration Date	DAE Calibration Date
ELI V8.0 (20deg probe tilt) - 2180	51T72N1	EX3DV4 - SN7757 / 2023-08-22	DAE4 Sn1669 / 2024-05-16

Scan Setup

	Area Scan	Zoom Scan
Grid Extents [mm]	51.0 x 306.0	22.0 x 22.0 x 22.0
Grid Steps [mm]	8.5 x 8.5	3.4 x 3.4 x 1.4
Sensor Surface [mm]	3.0	1.4
Graded Grid	N/A	Yes
Grading Ratio	N/A	1.4

Measurement Results

	Area Scan	Zoom Scan
psSAR-1g [W/kg]	0.346	0.411
psSAR-10g [W/kg]	0.108	0.124
psAPD (1.0 cm ² , sq) [W/m ²]		4.11
psAPD (4.0 cm ² , sq) [W/m ²]		2.84
Power Drift [dB]		0.02
TSL Correction	Positive only	Positive only
M2 / M1 [%]		51.0
Dist 3dB Peak [mm]		5.5



Test Date : 2024-07-31 | Ambient Temp : 21.9 °C | Tissue Temp : 20.9 °C

Test Mode

22_Bluetooth_GFSK_Right Side_0 mm_Ch78_Ant 1_Battery1

Device Under Test Properties

Manufacturer or Brand	Model No. or Code Name	Sample No. or IMEI	DUT Type
Getac	ZX10	A006	Tablet

Exposure Conditions

Phantom Section	Band	Group, UID	Frequency [MHz], Channel Number	Conversion Factor	TSL Conductivity [S/m]	TSL Permittivity
Flat	ISM 2.4 GHz Band	Bluetooth, 10032 - CAA	2480.000, 78	7.05	1.82	39.9

Hardware Setup

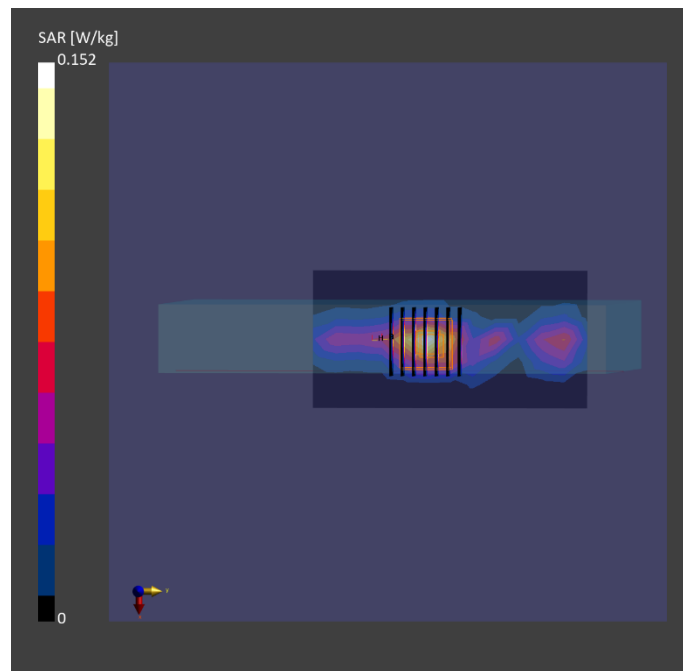
Phantom	Tissue Simulating Liquid	Probe Calibration Date	DAE Calibration Date
ELI V8.0 (20deg probe tilt) - 2180	06T27N2	EX3DV4 - SN7757 / 2023-08-22	DAE4 Sn1669 / 2024-05-16

Scan Setup

	Area Scan	Zoom Scan
Grid Extents [mm]	60.0 x 108.0	30.0 x 30.0 x 30.0
Grid Steps [mm]	10.0 x 10.0	5.0 x 5.0 x 5.0
Sensor Surface [mm]	3.0	1.4
Graded Grid	N/A	Yes
Grading Ratio	N/A	1.5

Measurement Results

	Area Scan	Zoom Scan
psSAR-1g [W/kg]	0.114	0.120
psSAR-10g [W/kg]	0.049	0.048
Power Drift [dB]		0.02
TSL Correction	Positive only	Positive only
M2 / M1 [%]		30.2
Dist 3dB Peak [mm]		5.2



Date: 2024/7/30

23_RFID_PSK_Bottom Surface_0 mm _Ant RFID_Battery1

DUT: ZX10

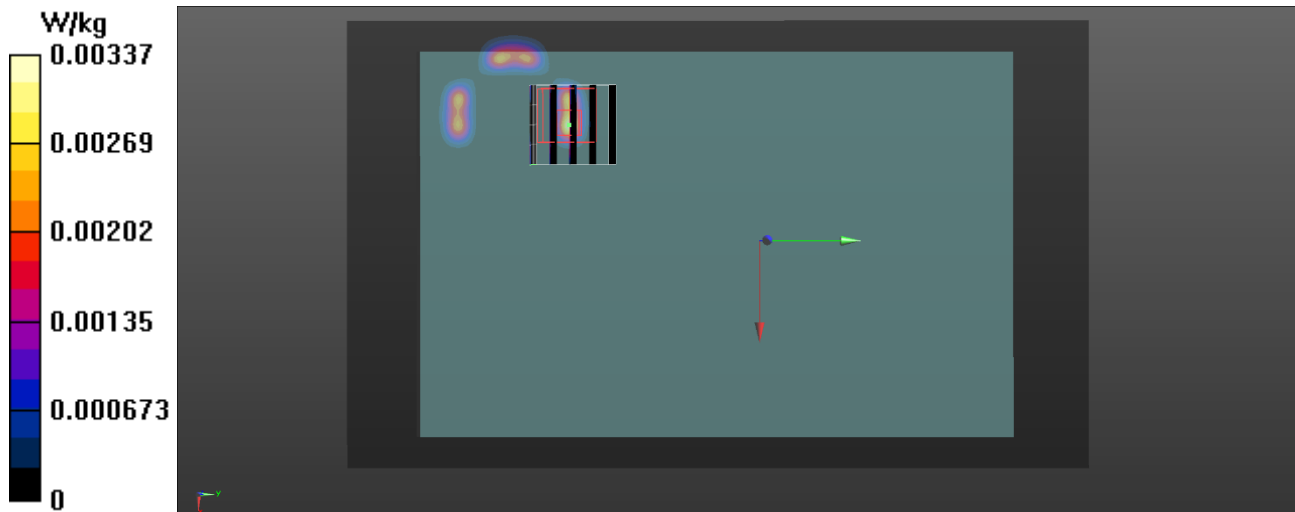
Communication System: UID 0, NFC (0); Frequency: 13.56 MHz; Duty Cycle: 1:1
 Medium parameters used (interpolated): $f = 13.56$ MHz; $\sigma = 0.731$ S/m; $\epsilon_r = 55.156$; $\rho = 1000$ kg/m³
 Phantom section: Flat Section
 Measurement Standard: DASYS

DASY5.2 Configuration:

- Area Scan setting - Find Secondary Maximum Within:2.0dB and with a peak SAR value greater than 0.5 W/Kg
- Probe: EX3DV4 - SN7650; ConvF(17.02, 18.46, 16.04) @ 13.56 MHz; Calibrated: 2024/6/4
- Sensor-Surface: 1.4mm (Mechanical Surface Detection)
- Electronics: DAE4 Sn541; Calibrated: 2024/3/11
- Phantom: ELI; Type: QD OVA 002 AA; Serial: 1175
- Measurement SW: DASY52, Version 52.10 (4); SEMCAD X Version 14.6.14 (7501)

Area Scan (121x201x1): Interpolated grid: dx=1.500 mm, dy=1.500 mm
 Maximum value of SAR (interpolated) = 0.00337 W/kg

Zoom Scan (5x5x7)/Cube 0: Measurement grid: dx=8mm, dy=8mm, dz=5mm
 Reference Value = 0 V/m; Power Drift = 0.00 dB
 Peak SAR (extrapolated) = 0.00521 W/kg
SAR(1 g) = 0.000813 W/kg; SAR(10 g) = 0.000262 W/kg (SAR corrected for target medium)
 Smallest distance from peaks to all points 3 dB below: Larger than measurement grid (> 16 mm)
 Ratio of SAR at M2 to SAR at M1 = 10.4%
 Maximum value of SAR (measured) = 0.00272 W/kg



Test Date : 2024-08-05 | Ambient Temp : 22.5 °C

Test Mode

24_U-NII 6_802.11ax HE160_Top Side_0mm_Ch111_Ant 0+1_Battery1

Device Under Test Properties

Manufacturer or Brand	Model No. or Code Name	Sample No. or IMEI	DUT Type
Getac	ZX10	A006	Tablet

Exposure Conditions

Phantom Section	Band	Group, UID	Frequency [MHz], Channel Number	Conversion Factor
5G	U-NII-6	WLAN, 10755 - AAC	6505.0, 111	1.0

Hardware Setup

Phantom	Medium	Probe Calibration Date	DAE Calibration Date
mmWave - 1102	Air	EUmmWV3 - SN9403_F1-55GHz / 2023-12-05	DAE4 Sn1742 / 2022-08-31

Scan Setup

	5G Scan
Grid Extents [mm]	92.0 x 92.0
Grid Steps [mm]	0.0542 x 0.0542
Sensor Surface [mm]	2.0

Measurement Results

	5G Scan
Avg. Area [cm ²]	4.00
psPD n+ [W/m ²]	2.28
psPD tot+ [W/m ²]	3.78
psPD mod+ [W/m ²]	5.60
E max [V/m]	58.5
Power Drift [dB]	-0.17

