

## Appendix B – System Check Plots

Test Date : 2024-02-02 | Ambient Temp : 22.8 °C | Tissue Temp : 22.5 °C

### System Performance Check

#### System Performance Check\_1800MHz

#### Verification Source Properties

Manufacturer	Model No.	Serial No.	Input Power [dBm]
SPEAG	D1800V2	2d167	17.0

#### Exposure Conditions

Phantom Section	Group	Frequency [MHz]	Conversion Factor	TSL Conductivity [S/m]	TSL Permittivity
Flat	CW	1800.000	8.96	1.33	40.3

#### Hardware Setup

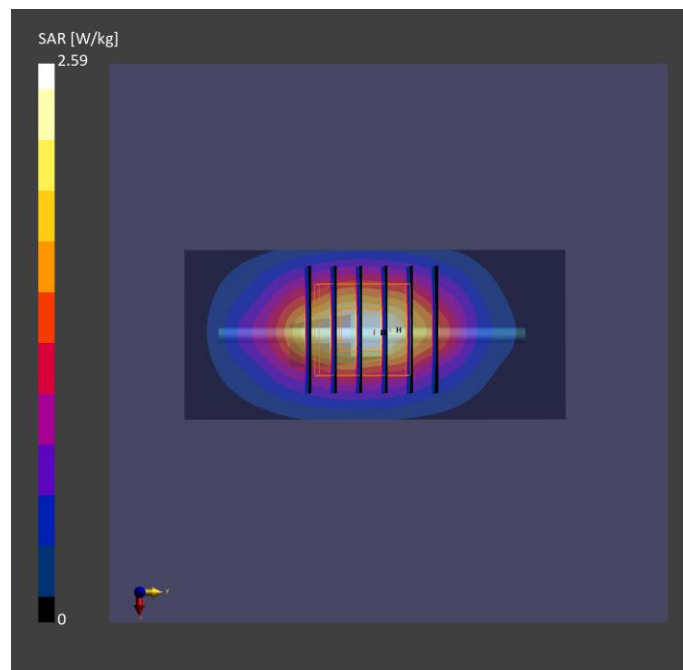
Phantom	Tissue Simulating Liquid	Probe / Calibration Date	DAE / Calibration Date
ELI V8.0 - SN2141	HBBL-600-10000	EX3DV4 - SN7650 / 2023-05-22	DAE4 Sn1741 / 2023-08-23

#### Scan Setup

	Area Scan	Zoom Scan
Grid Extents [mm]	40.0 x 90.0	30.0 x 30.0 x 30.0
Grid Steps [mm]	10.0 x 15.0	6.0 x 6.0 x 1.5
Sensor Surface [mm]	3.0	1.4
Graded Grid	N/A	Yes
Grading Ratio	N/A	1.5

#### Measurement Results

	Area Scan	Zoom Scan
psSAR-1g [W/kg]	1.83	<b>1.82</b>
psSAR-10g [W/kg]	0.954	<b>0.945</b>
Power Drift [dB]		0.00
TSL Correction	Positive only	Positive only



Test Date : 2024-02-07 | Ambient Temp : 22.2 °C | Tissue Temp : 21.3 °C

**System Performance Check**

**System Performance Check\_1800MHz**

**Verification Source Properties**

Manufacturer	Model No.	Serial No.	Input Power [dBm]
SPEAG	D1800V2	2d167	17.0

**Exposure Conditions**

Phantom Section	Group	Frequency [MHz]	Conversion Factor	TSL Conductivity [S/m]	TSL Permittivity
Flat	CW	1800.000	8.96	1.38	42.1

**Hardware Setup**

Phantom	Tissue Simulating Liquid	Probe   Calibration Date	DAE   Calibration Date
ELI V8.0 - SN2141	HBBL-600-10000	EX3DV4 - SN7650 / 2023-05-22	DAE4 Sn1741 / 2023-08-23

**Scan Setup**

	Area Scan	Zoom Scan
Grid Extents [mm]	40.0 x 90.0	30.0 x 30.0 x 30.0
Grid Steps [mm]	10.0 x 15.0	6.0 x 6.0 x 1.5
Sensor Surface [mm]	3.0	1.4
Graded Grid	N/A	Yes
Grading Ratio	N/A	1.5

**Measurement Results**

	Area Scan	Zoom Scan
psSAR-1g [W/kg]	1.87	<b>1.86</b>
psSAR-10g [W/kg]	0.972	<b>0.970</b>
Power Drift [dB]		0.00
TSL Correction	Positive only	Positive only

