

Appendix C - Highest Measurement Plots

Test Date : 2024-01-02 | Ambient Temp : 22.9 °C | Tissue Temp : 22.4 °C

Test Mode

1_WCDMA Band II_RMC12.2K_Rear Face_0mm_Ch9262_Ant Main

Device Under Test Properties

Manufacturer or Brand	Model No. or Code Name	Sample No. or IMEI	DUT Type
Getac	ZX80	A008	Tablet

Exposure Conditions

Phantom Section	Band	Group, UID	Frequency [MHz], Channel Number	Conversion Factor	TSL Conductivity [S/m]	TSL Permittivity
Flat	Band 2	WCDMA, 10011 - CAC	1852.400, 9262	7.25	1.41	40.8

Hardware Setup

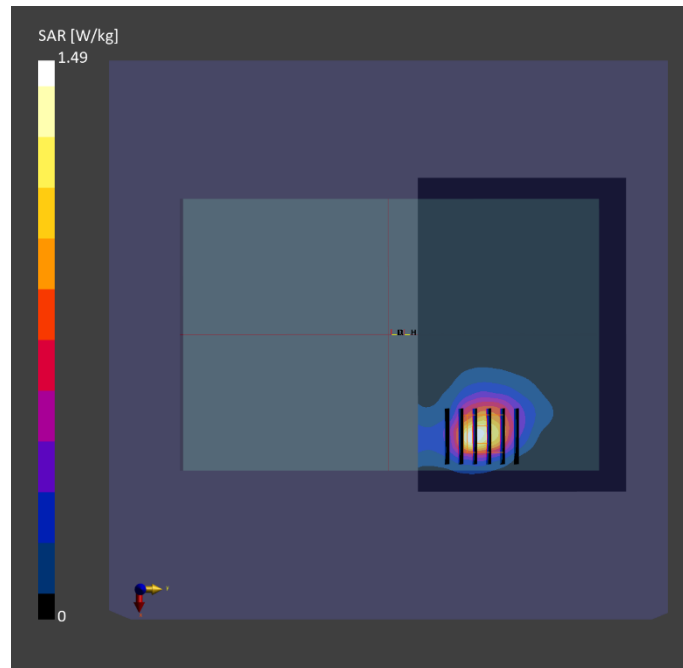
Phantom	Tissue Simulating Liquid	Probe Calibration Date	DAE Calibration Date
ELI V8.0 (20deg probe tilt) - 2141	HBBL-600-10000	EX3DV4 - SN7757 / 2023-08-22	DAE4 Sn1669 / 2023-05-23

Scan Setup

	Area Scan	Zoom Scan
Grid Extents [mm]	180.0 x 120.0	32.0 x 32.0 x 30.0
Grid Steps [mm]	15.0 x 15.0	8.0 x 8.0 x 5.0
Sensor Surface [mm]	3.0	1.4
Graded Grid	N/A	Yes
Grading Ratio	N/A	1.4

Measurement Results

	Area Scan	Zoom Scan
psSAR-1g [W/kg]	0.773	0.889
psSAR-10g [W/kg]	0.411	0.423
Power Drift [dB]		0.01
TSL Correction	Positive only	Positive only
M2 / M1 [%]		66.2
Dist 3dB Peak [mm]		8.7



Test Date : 2024-01-02 | Ambient Temp : 22.9 °C | Tissue Temp : 22.4 °C

Test Mode

2_WCDMA Band IV_RMC12.2K_Rear Face_0mm_Ch1312_Ant Main

Device Under Test Properties

Manufacturer or Brand	Model No. or Code Name	Sample No. or IMEI	DUT Type
Getac	ZX80	A008	Tablet

Exposure Conditions

Phantom Section	Band	Group, UID	Frequency [MHz], Channel Number	Conversion Factor	TSL Conductivity [S/m]	TSL Permittivity
Flat	Band 4	WCDMA, 10011 - CAC	1712.400, 1312	7.53	1.33	40.9

Hardware Setup

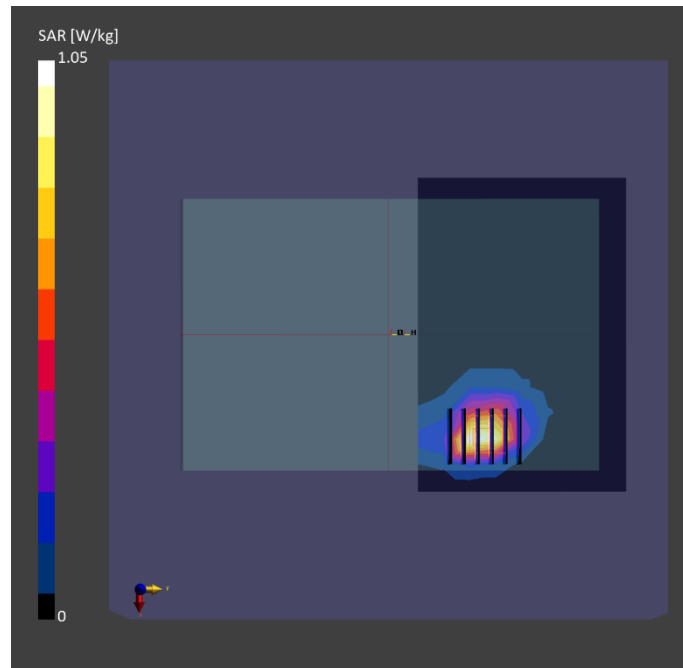
Phantom	Tissue Simulating Liquid	Probe Calibration Date	DAE Calibration Date
ELI V8.0 (20deg probe tilt) - 2141	HBBL-600-10000	EX3DV4 - SN7757 / 2023-08-22	DAE4 Sn1669 / 2023-05-23

Scan Setup

	Area Scan	Zoom Scan
Grid Extents [mm]	180.0 x 120.0	32.0 x 32.0 x 30.0
Grid Steps [mm]	15.0 x 15.0	8.0 x 8.0 x 5.0
Sensor Surface [mm]	3.0	1.4
Graded Grid	N/A	Yes
Grading Ratio	N/A	1.4

Measurement Results

	Area Scan	Zoom Scan
psSAR-1g [W/kg]	0.895	0.949
psSAR-10g [W/kg]	0.383	0.399
Power Drift [dB]		0.03
TSL Correction	Positive only	Positive only
M2 / M1 [%]		57.6
Dist 3dB Peak [mm]		9.6



Test Date : 2024-01-03 | Ambient Temp : 22.4 °C | Tissue Temp : 22.0 °C

Test Mode

3_WCDMA Band V_RMC12.2K_Rear Face_0mm_Ch4132_Ant Main

Device Under Test Properties

Manufacturer or Brand	Model No. or Code Name	Sample No. or IMEI	DUT Type
Getac	ZX80	A008	Tablet

Exposure Conditions

Phantom Section	Band	Group, UID	Frequency [MHz], Channel Number	Conversion Factor	TSL Conductivity [S/m]	TSL Permittivity
Flat	Band 5	WCDMA, 10011 - CAC	826.400, 4132	8.91	0.935	43.0

Hardware Setup

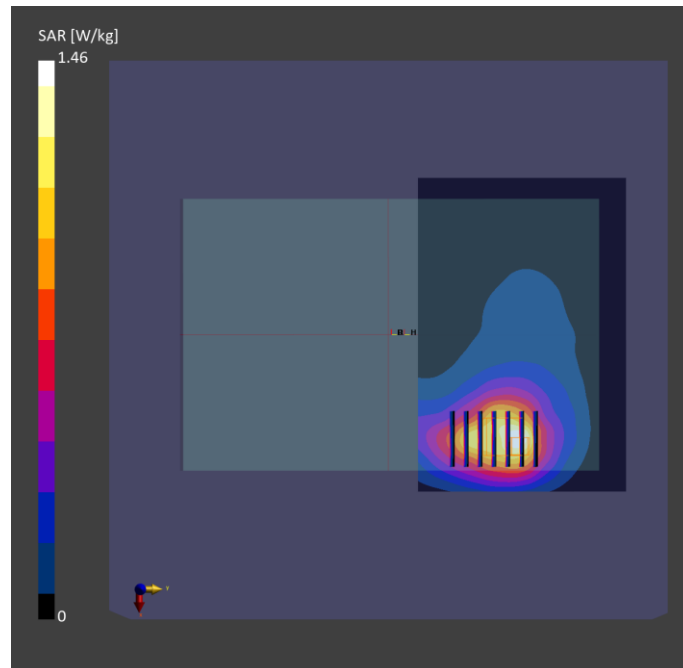
Phantom	Tissue Simulating Liquid	Probe Calibration Date	DAE Calibration Date
ELI V8.0 (20deg probe tilt) - 2141	HBBL-600-10000	EX3DV4 - SN7757 / 2023-08-22	DAE4 Sn1669 / 2023-05-23

Scan Setup

	Area Scan	Zoom Scan
Grid Extents [mm]	180.0 x 120.0	32.0 x 32.0 x 30.0
Grid Steps [mm]	15.0 x 15.0	8.0 x 8.0 x 5.0
Sensor Surface [mm]	3.0	1.4
Graded Grid	N/A	Yes
Grading Ratio	N/A	1.4

Measurement Results

	Area Scan	Zoom Scan
psSAR-1g [W/kg]	0.852	0.868
psSAR-10g [W/kg]	0.552	0.522
Power Drift [dB]		0.02
TSL Correction	Positive only	Positive only
M2 / M1 [%]		62.3
Dist 3dB Peak [mm]		9.6



Test Date : 2024-01-02 | Ambient Temp : 22.9 °C | Tissue Temp : 22.4 °C

Test Mode

4_LTE Band 2_QPSK20M_Rear Face_0mm_Ch18900_1RB_Offset0_Ant Main

Device Under Test Properties

Manufacturer or Brand	Model No. or Code Name	Sample No. or IMEI	DUT Type
Getac	ZX80	A008	Tablet

Exposure Conditions

Phantom Section	Band	Group, UID	Frequency [MHz], Channel Number	Conversion Factor	TSL Conductivity [S/m]	TSL Permittivity
Flat	Band 2	LTE-FDD, 10169 - CAF	1880.000, 18900	7.25	1.43	40.7

Hardware Setup

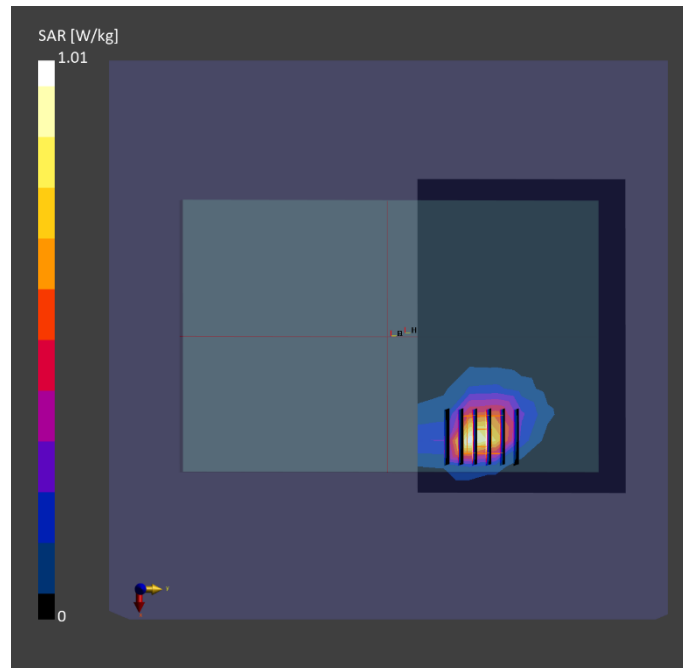
Phantom	Tissue Simulating Liquid	Probe Calibration Date	DAE Calibration Date
ELI V8.0 (20deg probe tilt) - 2141	HBBL-600-10000	EX3DV4 - SN7757 / 2023-08-22	DAE4 Sn1669 / 2023-05-23

Scan Setup

	Area Scan	Zoom Scan
Grid Extents [mm]	180.0 x 120.0	32.0 x 32.0 x 30.0
Grid Steps [mm]	15.0 x 15.0	8.0 x 8.0 x 5.0
Sensor Surface [mm]	3.0	1.4
Graded Grid	N/A	Yes
Grading Ratio	N/A	1.4

Measurement Results

	Area Scan	Zoom Scan
psSAR-1g [W/kg]	0.828	0.949
psSAR-10g [W/kg]	0.435	0.448
Power Drift [dB]		-0.11
TSL Correction	Positive only	Positive only
M2 / M1 [%]		65.3
Dist 3dB Peak [mm]		8.7



Test Date : 2024-01-02 | Ambient Temp : 22.9 °C | Tissue Temp : 22.4 °C

Test Mode

5_LTE Band 4_QPSK20M_Rear Face_0mm_Ch20300_1RB_Offset0_Ant Main

Device Under Test Properties

Manufacturer or Brand	Model No. or Code Name	Sample No. or IMEI	DUT Type
Getac	ZX80	A008	Tablet

Exposure Conditions

Phantom Section	Band	Group, UID	Frequency [MHz], Channel Number	Conversion Factor	TSL Conductivity [S/m]	TSL Permittivity
Flat	Band 4	LTE-FDD, 10169 - CAF	1745.000, 20300	7.53	1.35	40.9

Hardware Setup

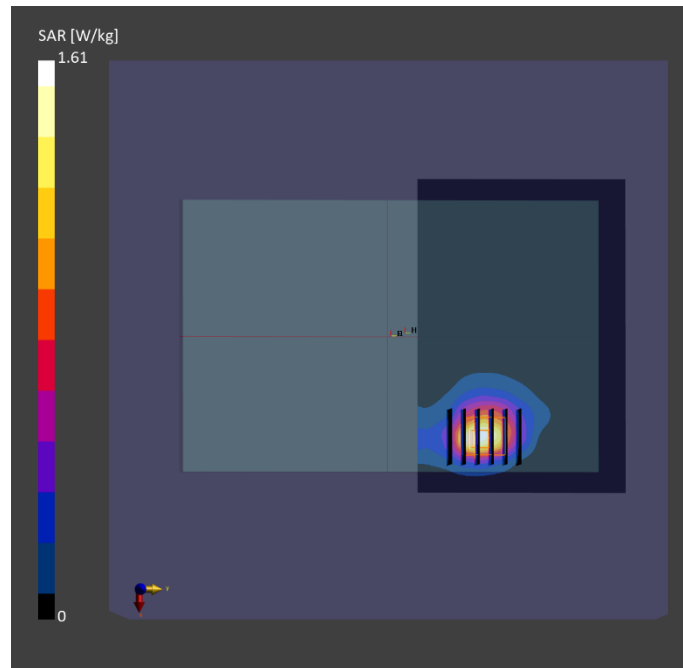
Phantom	Tissue Simulating Liquid	Probe Calibration Date	DAE Calibration Date
ELI V8.0 (20deg probe tilt) - 2141	HBBL-600-10000	EX3DV4 - SN7757 / 2023-08-22	DAE4 Sn1669 / 2023-05-23

Scan Setup

	Area Scan	Zoom Scan
Grid Extents [mm]	180.0 x 120.0	32.0 x 32.0 x 30.0
Grid Steps [mm]	15.0 x 15.0	8.0 x 8.0 x 5.0
Sensor Surface [mm]	3.0	1.4
Graded Grid	N/A	Yes
Grading Ratio	N/A	1.4

Measurement Results

	Area Scan	Zoom Scan
psSAR-1g [W/kg]	0.894	0.950
psSAR-10g [W/kg]	0.480	0.478
Power Drift [dB]		-0.03
TSL Correction	Positive only	Positive only
M2 / M1 [%]		67.3
Dist 3dB Peak [mm]		9.6



Test Date : 2024-01-03 | Ambient Temp : 22.4 °C | Tissue Temp : 22.0 °C

Test Mode

6_LTE Band 5_QPSK10M_Rear Face_0mm_Ch20525_1RB_Offset0_Ant Main

Device Under Test Properties

Manufacturer or Brand	Model No. or Code Name	Sample No. or IMEI	DUT Type
Getac	ZX80	A008	Tablet

Exposure Conditions

Phantom Section	Band	Group, UID	Frequency [MHz], Channel Number	Conversion Factor	TSL Conductivity [S/m]	TSL Permittivity
Flat	Band 5	LTE-FDD, 10175 - CAH	836.500, 20525	8.91	0.939	43.0

Hardware Setup

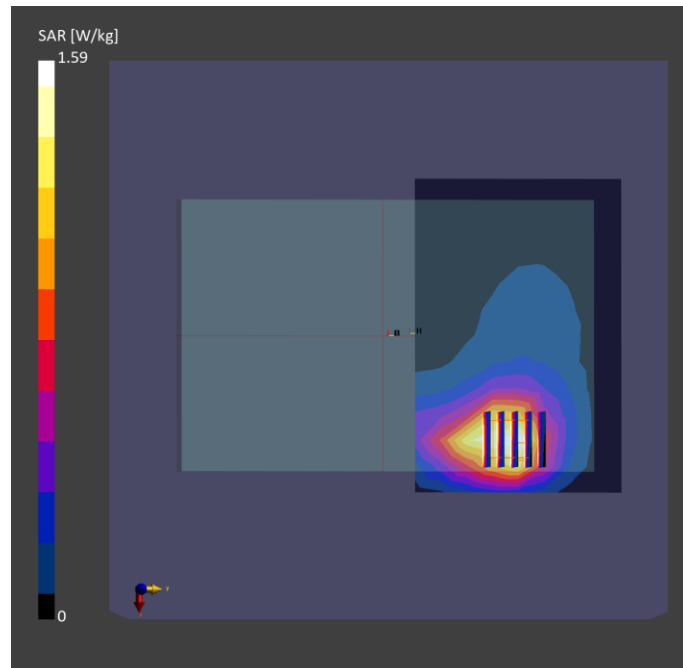
Phantom	Tissue Simulating Liquid	Probe Calibration Date	DAE Calibration Date
ELI V8.0 (20deg probe tilt) - 2141	HBBL-600-10000	EX3DV4 - SN7757 / 2023-08-22	DAE4 Sn1669 / 2023-05-23

Scan Setup

	Area Scan	Zoom Scan
Grid Extents [mm]	180.0 x 120.0	32.0 x 32.0 x 30.0
Grid Steps [mm]	15.0 x 15.0	8.0 x 8.0 x 5.0
Sensor Surface [mm]	3.0	1.4
Graded Grid	N/A	Yes
Grading Ratio	N/A	1.4

Measurement Results

	Area Scan	Zoom Scan
psSAR-1g [W/kg]	0.766	0.876
psSAR-10g [W/kg]	0.510	0.496
Power Drift [dB]		0.02
TSL Correction	Positive only	Positive only
M2 / M1 [%]		66.1
Dist 3dB Peak [mm]		9.6



Test Date : 2024-01-05 | Ambient Temp : 22.6 °C | Tissue Temp : 22.3 °C

Test Mode

7_LTE Band 7_QPSK20M_Rear Face_0mm_Ch21100_1RB_Offset0_Ant Main

Device Under Test Properties

Manufacturer or Brand	Model No. or Code Name	Sample No. or IMEI	DUT Type
Getac	ZX80	A008	Tablet

Exposure Conditions

Phantom Section	Band	Group, UID	Frequency [MHz], Channel Number	Conversion Factor	TSL Conductivity [S/m]	TSL Permittivity
Flat	Band 7	LTE-FDD, 10169 - CAF	2535.000, 21100	6.95	1.86	39.3

Hardware Setup

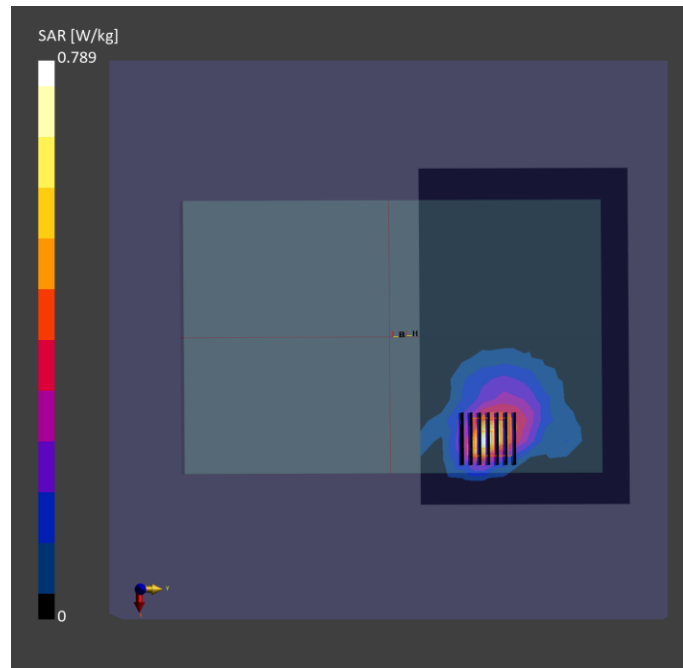
Phantom	Tissue Simulating Liquid	Probe Calibration Date	DAE Calibration Date
ELI V8.0 (20deg probe tilt) - 2141	HBBL-600-10000	EX3DV4 - SN7757 / 2023-08-22	DAE4 Sn1669 / 2023-05-23

Scan Setup

	Area Scan	Zoom Scan
Grid Extents [mm]	192.0 x 120.0	30.0 x 30.0 x 30.0
Grid Steps [mm]	12.0 x 12.0	5.0 x 5.0 x 5.0
Sensor Surface [mm]	3.0	1.4
Graded Grid	N/A	Yes
Grading Ratio	N/A	1.4

Measurement Results

	Area Scan	Zoom Scan
psSAR-1g [W/kg]	0.589	0.602
psSAR-10g [W/kg]	0.278	0.280
Power Drift [dB]		0.05
TSL Correction	Positive only	Positive only
M2 / M1 [%]		70.5
Dist 3dB Peak [mm]		9.5



Test Date : 2024-01-04 | Ambient Temp : 22.4 °C | Tissue Temp : 21.9 °C

Test Mode

8_LTE Band 12_QPSK10M_Rear Face_0mm_Ch23130_1RB_Offset0_Ant Main

Device Under Test Properties

Manufacturer or Brand	Model No. or Code Name	Sample No. or IMEI	DUT Type
Getac	ZX80	A008	Tablet

Exposure Conditions

Phantom Section	Band	Group, UID	Frequency [MHz], Channel Number	Conversion Factor	TSL Conductivity [S/m]	TSL Permittivity
Flat	Band 12	LTE-FDD, 10175 - CAH	711.000, 23130	9.1	0.884	42.4

Hardware Setup

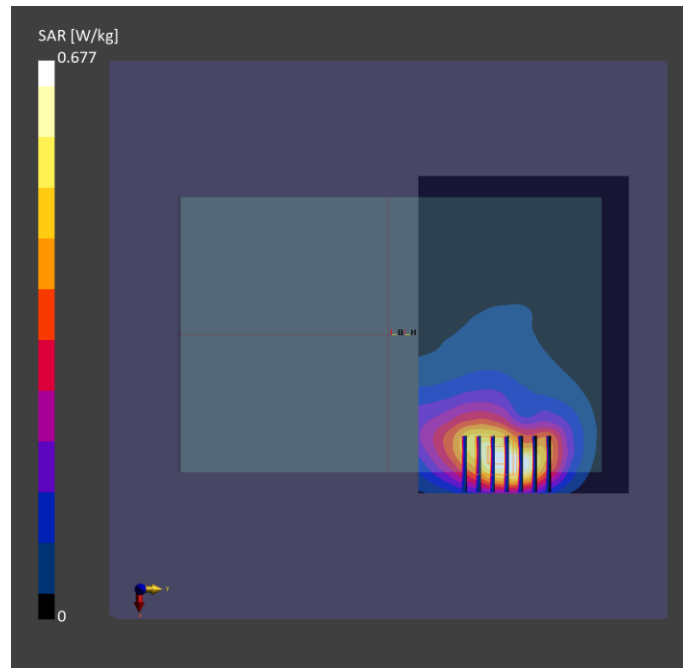
Phantom	Tissue Simulating Liquid	Probe Calibration Date	DAE Calibration Date
ELI V8.0 (20deg probe tilt) - 2141	HBBL-600-10000	EX3DV4 - SN7757 / 2023-08-22	DAE4 Sn1669 / 2023-05-23

Scan Setup

	Area Scan	Zoom Scan
Grid Extents [mm]	180.0 x 120.0	32.0 x 32.0 x 30.0
Grid Steps [mm]	15.0 x 15.0	8.0 x 8.0 x 5.0
Sensor Surface [mm]	3.0	1.4
Graded Grid	N/A	Yes
Grading Ratio	N/A	1.4

Measurement Results

	Area Scan	Zoom Scan
psSAR-1g [W/kg]	0.448	0.475
psSAR-10g [W/kg]	0.296	0.289
Power Drift [dB]		0.01
TSL Correction	Positive only	Positive only
M2 / M1 [%]		68.9
Dist 3dB Peak [mm]		11.2



Test Date : 2024-01-04 | Ambient Temp : 22.4 °C | Tissue Temp : 21.9 °C

Test Mode

9_LTE Band 13_QPSK10M_Rear Face_0mm_Ch23230_1RB_Offset0_Ant Main

Device Under Test Properties

Manufacturer or Brand	Model No. or Code Name	Sample No. or IMEI	DUT Type
Getac	ZX80	A008	Tablet

Exposure Conditions

Phantom Section	Band	Group, UID	Frequency [MHz], Channel Number	Conversion Factor	TSL Conductivity [S/m]	TSL Permittivity
Flat	Band 13	LTE-FDD, 10175 - CAH	782.000, 23230	9.1	0.908	42.3

Hardware Setup

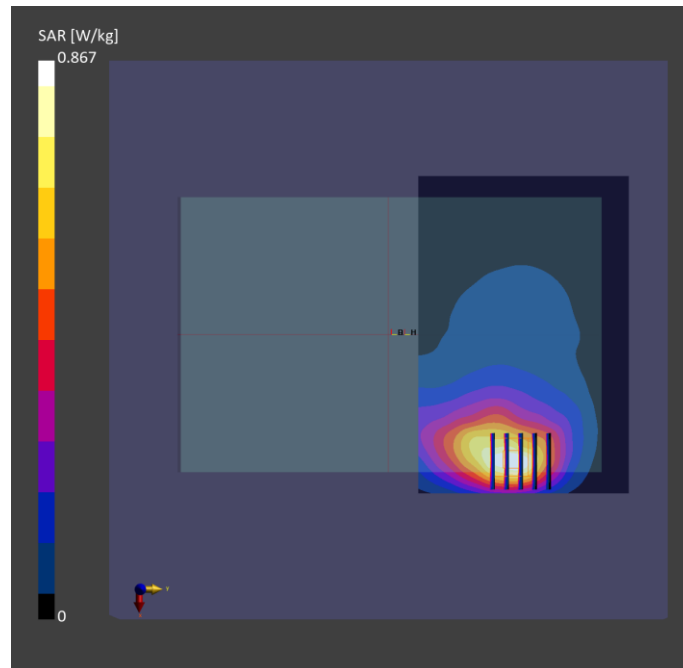
Phantom	Tissue Simulating Liquid	Probe Calibration Date	DAE Calibration Date
ELI V8.0 (20deg probe tilt) - 2141	HBBL-600-10000	EX3DV4 - SN7757 / 2023-08-22	DAE4 Sn1669 / 2023-05-23

Scan Setup

	Area Scan	Zoom Scan
Grid Extents [mm]	180.0 x 120.0	32.0 x 32.0 x 30.0
Grid Steps [mm]	15.0 x 15.0	8.0 x 8.0 x 5.0
Sensor Surface [mm]	3.0	1.4
Graded Grid	N/A	Yes
Grading Ratio	N/A	1.4

Measurement Results

	Area Scan	Zoom Scan
psSAR-1g [W/kg]	0.555	0.590
psSAR-10g [W/kg]	0.366	0.350
Power Drift [dB]		0.01
TSL Correction	Positive only	Positive only
M2 / M1 [%]		66.3
Dist 3dB Peak [mm]		11.7



Test Date : 2024-01-04 | Ambient Temp : 22.4 °C | Tissue Temp : 21.9 °C

Test Mode

10_LTE Band 14_QPSK10M_Rear Face_0mm_Ch23330_1RB_Offset0_Ant Main

Device Under Test Properties

Manufacturer or Brand	Model No. or Code Name	Sample No. or IMEI	DUT Type
Getac	ZX80	A008	Tablet

Exposure Conditions

Phantom Section	Band	Group, UID	Frequency [MHz], Channel Number	Conversion Factor	TSL Conductivity [S/m]	TSL Permittivity
Flat	Band 14	LTE-FDD, 10175 - CAH	793.000, 23330	9.1	0.912	42.2

Hardware Setup

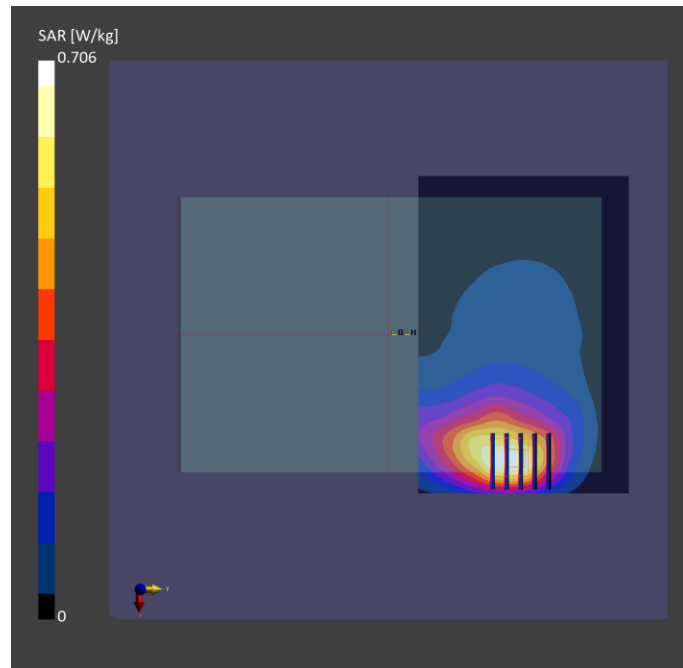
Phantom	Tissue Simulating Liquid	Probe Calibration Date	DAE Calibration Date
ELI V8.0 (20deg probe tilt) - 2141	HBBL-600-10000	EX3DV4 - SN7757 / 2023-08-22	DAE4 Sn1669 / 2023-05-23

Scan Setup

	Area Scan	Zoom Scan
Grid Extents [mm]	180.0 x 120.0	32.0 x 32.0 x 30.0
Grid Steps [mm]	15.0 x 15.0	8.0 x 8.0 x 5.0
Sensor Surface [mm]	3.0	1.4
Graded Grid	N/A	Yes
Grading Ratio	N/A	1.4

Measurement Results

	Area Scan	Zoom Scan
psSAR-1g [W/kg]	0.448	0.481
psSAR-10g [W/kg]	0.296	0.285
Power Drift [dB]		0.02
TSL Correction	Positive only	Positive only
M2 / M1 [%]		65.6
Dist 3dB Peak [mm]		11.7



Test Date : 2024-01-04 | Ambient Temp : 22.4 °C | Tissue Temp : 21.9 °C

Test Mode

11_LTE Band 17_QPSK10M_Rear Face_0mm_Ch23790_1RB_Offset0_Ant Main

Device Under Test Properties

Manufacturer or Brand	Model No. or Code Name	Sample No. or IMEI	DUT Type
Getac	ZX80	A008	Tablet

Exposure Conditions

Phantom Section	Band	Group, UID	Frequency [MHz], Channel Number	Conversion Factor	TSL Conductivity [S/m]	TSL Permittivity
Flat	Band 17	LTE-FDD, 10175 - CAH	710.000, 23790	9.1	0.884	42.4

Hardware Setup

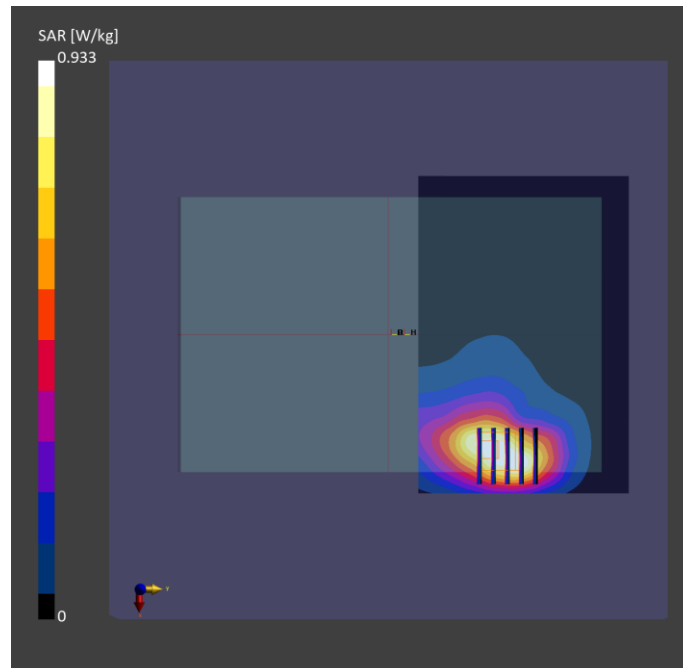
Phantom	Tissue Simulating Liquid	Probe Calibration Date	DAE Calibration Date
ELI V8.0 (20deg probe tilt) - 2141	HBBL-600-10000	EX3DV4 - SN7757 / 2023-08-22	DAE4 Sn1669 / 2023-05-23

Scan Setup

	Area Scan	Zoom Scan
Grid Extents [mm]	180.0 x 120.0	32.0 x 32.0 x 30.0
Grid Steps [mm]	15.0 x 15.0	8.0 x 8.0 x 5.0
Sensor Surface [mm]	3.0	1.4
Graded Grid	N/A	Yes
Grading Ratio	N/A	1.4

Measurement Results

	Area Scan	Zoom Scan
psSAR-1g [W/kg]	0.556	0.623
psSAR-10g [W/kg]	0.375	0.361
Power Drift [dB]		-0.02
TSL Correction	Positive only	Positive only
M2 / M1 [%]		63.5
Dist 3dB Peak [mm]		12.5



Test Date : 2024-01-02 | Ambient Temp : 22.9 °C | Tissue Temp : 22.4 °C

Test Mode

12_LTE Band 25_QPSK20M_Rear Face_0mm_Ch26590_1RB_Offset0_Ant Main

Device Under Test Properties

Manufacturer or Brand	Model No. or Code Name	Sample No. or IMEI	DUT Type
Getac	ZX80	A008	Tablet

Exposure Conditions

Phantom Section	Band	Group, UID	Frequency [MHz], Channel Number	Conversion Factor	TSL Conductivity [S/m]	TSL Permittivity
Flat	Band 25	LTE-FDD, 10169 - CAF	1905.000, 26590	7.25	1.45	40.7

Hardware Setup

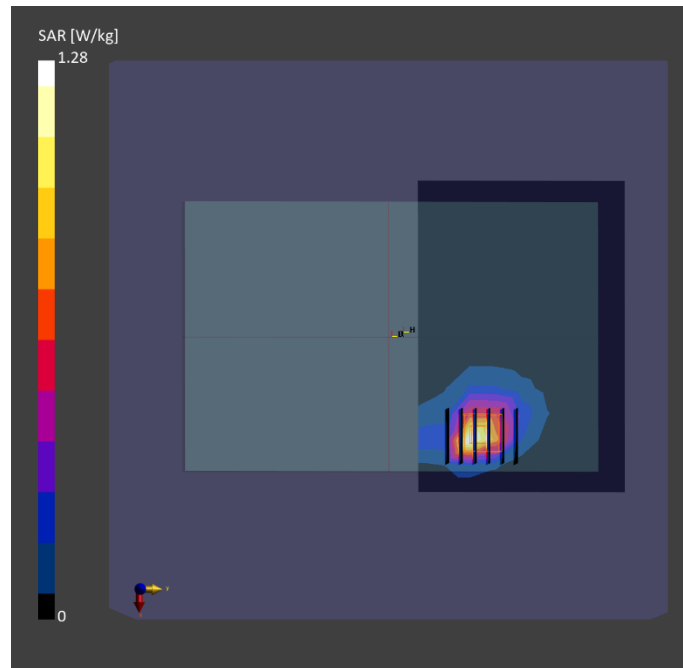
Phantom	Tissue Simulating Liquid	Probe Calibration Date	DAE Calibration Date
ELI V8.0 (20deg probe tilt) - 2141	HBBL-600-10000	EX3DV4 - SN7757 / 2023-08-22	DAE4 Sn1669 / 2023-05-23

Scan Setup

	Area Scan	Zoom Scan
Grid Extents [mm]	180.0 x 120.0	32.0 x 32.0 x 30.0
Grid Steps [mm]	15.0 x 15.0	8.0 x 8.0 x 5.0
Sensor Surface [mm]	3.0	1.4
Graded Grid	N/A	Yes
Grading Ratio	N/A	1.4

Measurement Results

	Area Scan	Zoom Scan
psSAR-1g [W/kg]	0.941	0.950
psSAR-10g [W/kg]	0.344	0.386
Power Drift [dB]		-0.03
TSL Correction	Positive only	Positive only
M2 / M1 [%]		66.8
Dist 3dB Peak [mm]		9.1



Test Date : 2024-01-03 | Ambient Temp : 22.4 °C | Tissue Temp : 22.0 °C

Test Mode

13_LTE Band 26_QPSK15M_Rear Face_0mm_Ch26865_1RB_Offset0_Ant Main

Device Under Test Properties

Manufacturer or Brand	Model No. or Code Name	Sample No. or IMEI	DUT Type
Getac	ZX80	A008	Tablet

Exposure Conditions

Phantom Section	Band	Group, UID	Frequency [MHz], Channel Number	Conversion Factor	TSL Conductivity [S/m]	TSL Permittivity
Flat	Band 26	LTE-FDD, 10181 - CAF	831.500, 26865	8.91	0.937	43.0

Hardware Setup

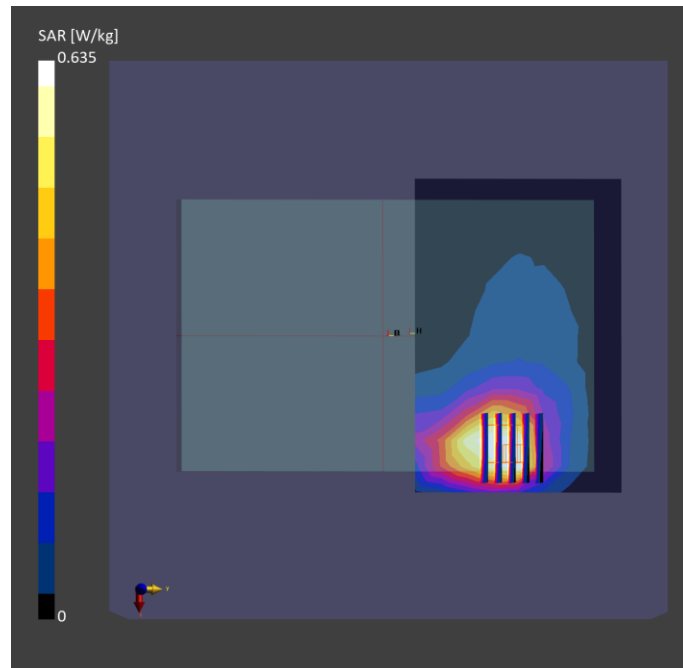
Phantom	Tissue Simulating Liquid	Probe Calibration Date	DAE Calibration Date
ELI V8.0 (20deg probe tilt) - 2141	HBBL-600-10000	EX3DV4 - SN7757 / 2023-08-22	DAE4 Sn1669 / 2023-05-23

Scan Setup

	Area Scan	Zoom Scan
Grid Extents [mm]	180.0 x 120.0	32.0 x 32.0 x 30.0
Grid Steps [mm]	15.0 x 15.0	8.0 x 8.0 x 5.0
Sensor Surface [mm]	3.0	1.4
Graded Grid	N/A	Yes
Grading Ratio	N/A	1.4

Measurement Results

	Area Scan	Zoom Scan
psSAR-1g [W/kg]	0.605	0.682
psSAR-10g [W/kg]	0.409	0.394
Power Drift [dB]		-0.05
TSL Correction	Positive only	Positive only
M2 / M1 [%]		66.7
Dist 3dB Peak [mm]		8.2



Test Date : 2024-01-05 | Ambient Temp : 22.6 °C | Tissue Temp : 22.3 °C

Test Mode

14_LTE Band 38_QPSK20M_Rear Face_0mm_Ch37850_1RB_Offset0_Ant Main

Device Under Test Properties

Manufacturer or Brand	Model No. or Code Name	Sample No. or IMEI	DUT Type
Getac	ZX80	A008	Tablet

Exposure Conditions

Phantom Section	Band	Group, UID	Frequency [MHz], Channel Number	Conversion Factor	TSL Conductivity [S/m]	TSL Permittivity
Flat	Band 38	LTE-TDD, 10172 - CAH	2580.000, 37850	6.95	1.89	39.3

Hardware Setup

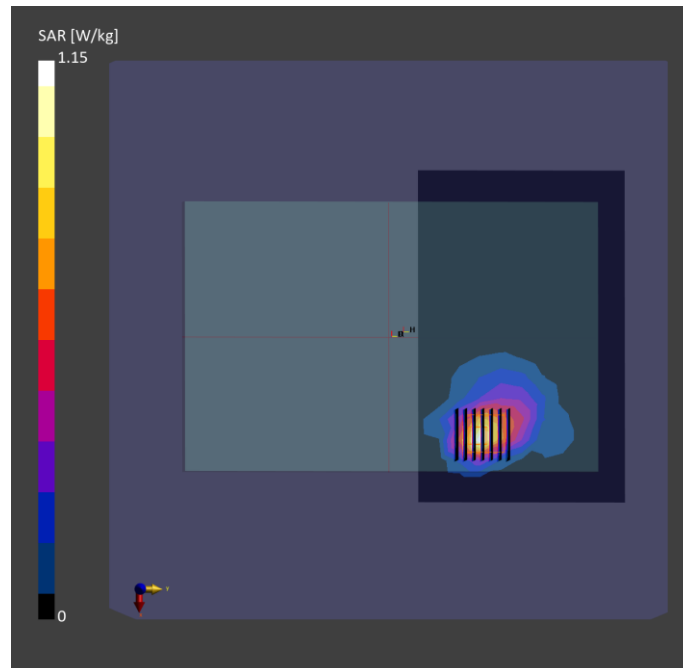
Phantom	Tissue Simulating Liquid	Probe Calibration Date	DAE Calibration Date
ELI V8.0 (20deg probe tilt) - 2141	HBBL-600-10000	EX3DV4 - SN7757 / 2023-08-22	DAE4 Sn1669 / 2023-05-23

Scan Setup

	Area Scan	Zoom Scan
Grid Extents [mm]	192.0 x 120.0	30.0 x 30.0 x 30.0
Grid Steps [mm]	12.0 x 12.0	5.0 x 5.0 x 5.0
Sensor Surface [mm]	3.0	1.4
Graded Grid	N/A	Yes
Grading Ratio	N/A	1.4

Measurement Results

	Area Scan	Zoom Scan
psSAR-1g [W/kg]	0.895	0.936
psSAR-10g [W/kg]	0.425	0.422
Power Drift [dB]		-0.01
TSL Correction	Positive only	Positive only
M2 / M1 [%]		68.8
Dist 3dB Peak [mm]		9.5



Test Date : 2024-01-05 | Ambient Temp : 22.6 °C | Tissue Temp : 22.3 °C

Test Mode

15_LTE Band 41_QPSK20M_Rear Face_0mm_Ch40185_1RB_Offset0_Ant Main

Device Under Test Properties

Manufacturer or Brand	Model No. or Code Name	Sample No. or IMEI	DUT Type
Getac	ZX80	A008	Tablet

Exposure Conditions

Phantom Section	Band	Group, UID	Frequency [MHz], Channel Number	Conversion Factor	TSL Conductivity [S/m]	TSL Permittivity
Flat	Band 41	LTE-TDD, 10172 - CAH	2549.500, 40185	6.95	1.88	39.3

Hardware Setup

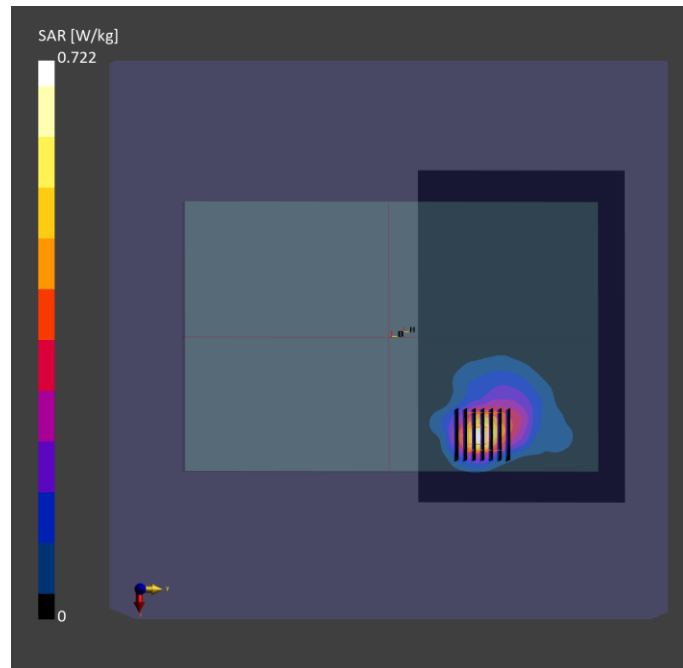
Phantom	Tissue Simulating Liquid	Probe Calibration Date	DAE Calibration Date
ELI V8.0 (20deg probe tilt) - 2141	HBBL-600-10000	EX3DV4 - SN7757 / 2023-08-22	DAE4 Sn1669 / 2023-05-23

Scan Setup

	Area Scan	Zoom Scan
Grid Extents [mm]	192.0 x 120.0	30.0 x 30.0 x 30.0
Grid Steps [mm]	12.0 x 12.0	5.0 x 5.0 x 5.0
Sensor Surface [mm]	3.0	1.4
Graded Grid	N/A	Yes
Grading Ratio	N/A	1.4

Measurement Results

	Area Scan	Zoom Scan
psSAR-1g [W/kg]	0.383	0.404
psSAR-10g [W/kg]	0.181	0.181
Power Drift [dB]		0.17
TSL Correction	Positive only	Positive only
M2 / M1 [%]		69.4
Dist 3dB Peak [mm]		9.5



Test Date : 2024-01-05 | Ambient Temp : 22.6 °C | Tissue Temp : 22.3 °C

Test Mode

16_LTE Band 42_QPSK20M_Rear Face_0mm_Ch43490_1RB_Offset0_Ant MIMO 1

Device Under Test Properties

Manufacturer or Brand	Model No. or Code Name	Sample No. or IMEI	DUT Type
Getac	ZX80	A004	Tablet

Exposure Conditions

Phantom Section	Band	Group, UID	Frequency [MHz], Channel Number	Conversion Factor	TSL Conductivity [S/m]	TSL Permittivity
Flat	Band 42	LTE-TDD, 10172 - CAH	3590.000, 43490	6.87	2.82	38.7

Hardware Setup

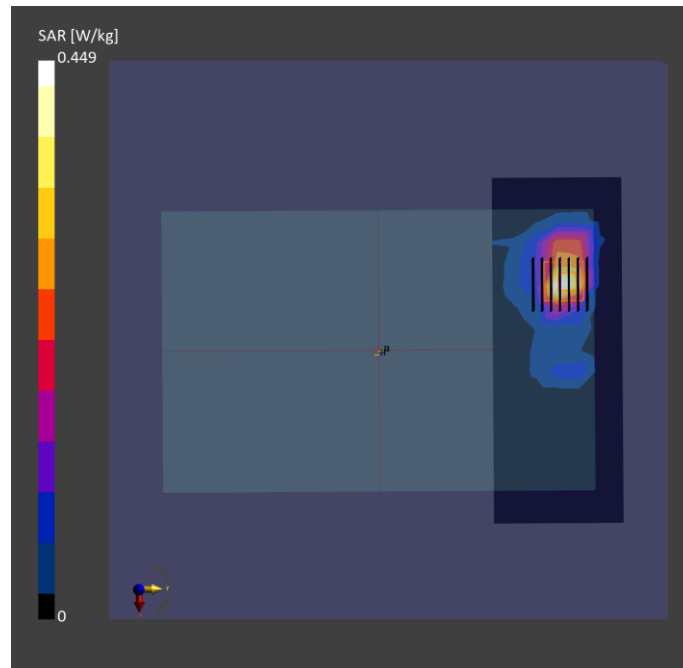
Phantom	Tissue Simulating Liquid	Probe Calibration Date	DAE Calibration Date
ELI V8.0 (20deg probe tilt) - 2179	HBBL-600-10000	EX3DV4 - SN7737 / 2023-06-05	DAE4 Sn1743 / 2023-08-17

Scan Setup

	Area Scan	Zoom Scan
Grid Extents [mm]	192.0 x 72.0	30.0 x 30.0 x 28.0
Grid Steps [mm]	12.0 x 12.0	5.0 x 5.0 x 2.5
Sensor Surface [mm]	3.0	1.4
Graded Grid	N/A	Yes
Grading Ratio	N/A	1.4

Measurement Results

	Area Scan	Zoom Scan
psSAR-1g [W/kg]	0.342	0.439
psSAR-10g [W/kg]	0.145	0.162
Power Drift [dB]		0.03
TSL Correction	Positive only	Positive only
M2 / M1 [%]		62.5
Dist 3dB Peak [mm]		6.0



Test Date : 2024-01-08 | Ambient Temp : 22.4 °C | Tissue Temp : 22.1 °C

Test Mode

17_LTE Band 43_QPSK20M_Rear Face_0mm_Ch44340_1RB_Offset0_Ant MIMO 1

Device Under Test Properties

Manufacturer or Brand	Model No. or Code Name	Sample No. or IMEI	DUT Type
Getac	ZX80	A004	Tablet

Exposure Conditions

Phantom Section	Band	Group, UID	Frequency [MHz], Channel Number	Conversion Factor	TSL Conductivity [S/m]	TSL Permittivity
Flat	Band 43	LTE-TDD, 10172 - CAH	3675.000, 44340	6.8	2.89	38.6

Hardware Setup

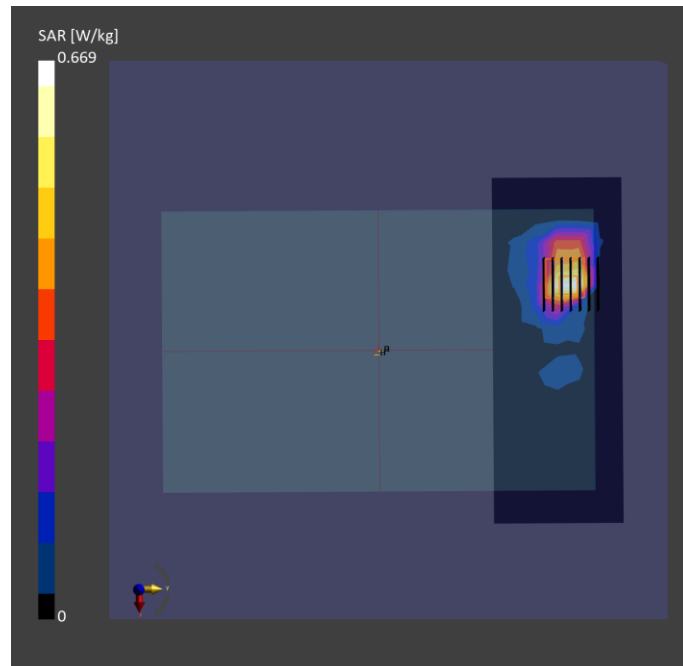
Phantom	Tissue Simulating Liquid	Probe Calibration Date	DAE Calibration Date
ELI V8.0 (20deg probe tilt) - 2179	HBBL-600-10000	EX3DV4 - SN7737 / 2023-06-05	DAE4 Sn1743 / 2023-08-17

Scan Setup

	Area Scan	Zoom Scan
Grid Extents [mm]	192.0 x 72.0	30.0 x 30.0 x 28.0
Grid Steps [mm]	12.0 x 12.0	5.0 x 5.0 x 2.5
Sensor Surface [mm]	3.0	1.4
Graded Grid	N/A	Yes
Grading Ratio	N/A	1.4

Measurement Results

	Area Scan	Zoom Scan
psSAR-1g [W/kg]	0.551	0.805
psSAR-10g [W/kg]	0.229	0.263
Power Drift [dB]		-0.01
TSL Correction	Positive only	Positive only
M2 / M1 [%]		57.8
Dist 3dB Peak [mm]		5.2



Test Date : 2024-01-08 | Ambient Temp : 22.4 °C | Tissue Temp : 22.1 °C

Test Mode

18_LTE Band 48_QPSK20M_Rear Face_0mm_Ch56207_1RB_Offset0_Ant MIMO 1

Device Under Test Properties

Manufacturer or Brand	Model No. or Code Name	Sample No. or IMEI	DUT Type
Getac	ZX80	A004	Tablet

Exposure Conditions

Phantom Section	Band	Group, UID	Frequency [MHz], Channel Number	Conversion Factor	TSL Conductivity [S/m]	TSL Permittivity
Flat	Band 48	LTE-TDD, 10172 - CAH	3646.700, 56207	6.8	2.87	38.7

Hardware Setup

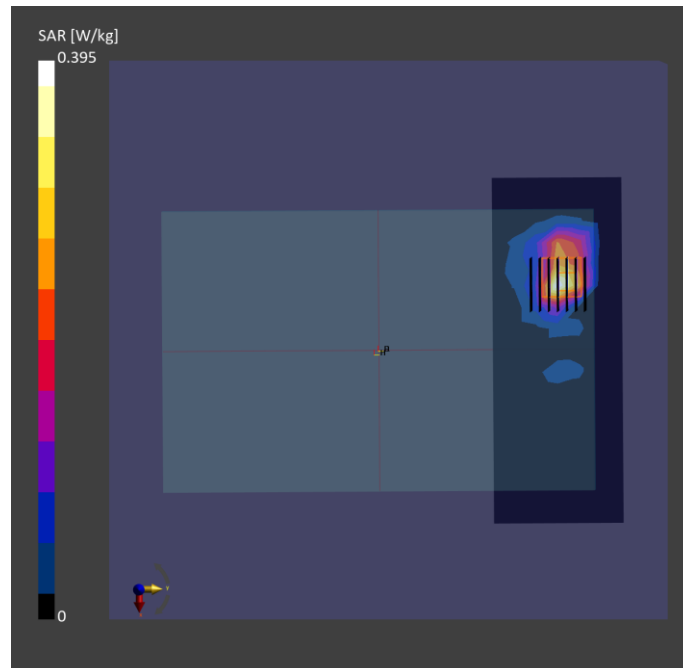
Phantom	Tissue Simulating Liquid	Probe Calibration Date	DAE Calibration Date
ELI V8.0 (20deg probe tilt) - 2179	HBBL-600-10000	EX3DV4 - SN7737 / 2023-06-05	DAE4 Sn1743 / 2023-08-17

Scan Setup

	Area Scan	Zoom Scan
Grid Extents [mm]	192.0 x 72.0	30.0 x 30.0 x 28.0
Grid Steps [mm]	12.0 x 12.0	5.0 x 5.0 x 2.5
Sensor Surface [mm]	3.0	1.4
Graded Grid	N/A	Yes
Grading Ratio	N/A	1.4

Measurement Results

	Area Scan	Zoom Scan
psSAR-1g [W/kg]	0.296	0.420
psSAR-10g [W/kg]	0.122	0.141
Power Drift [dB]		-0.01
TSL Correction	Positive only	Positive only
M2 / M1 [%]		59.9
Dist 3dB Peak [mm]		5.1



Test Date : 2024-01-02 | Ambient Temp : 22.9 °C | Tissue Temp : 22.4 °C

Test Mode

19_LTE Band 66_QPSK20M_Rear Face_0mm_Ch132322_1RB_Offset0_Ant Main

Device Under Test Properties

Manufacturer or Brand	Model No. or Code Name	Sample No. or IMEI	DUT Type
Getac	ZX80	A008	Tablet

Exposure Conditions

Phantom Section	Band	Group, UID	Frequency [MHz], Channel Number	Conversion Factor	TSL Conductivity [S/m]	TSL Permittivity
Flat	Band 66	LTE-FDD, 10169 - CAF	1745.000, 132322	7.53	1.35	40.9

Hardware Setup

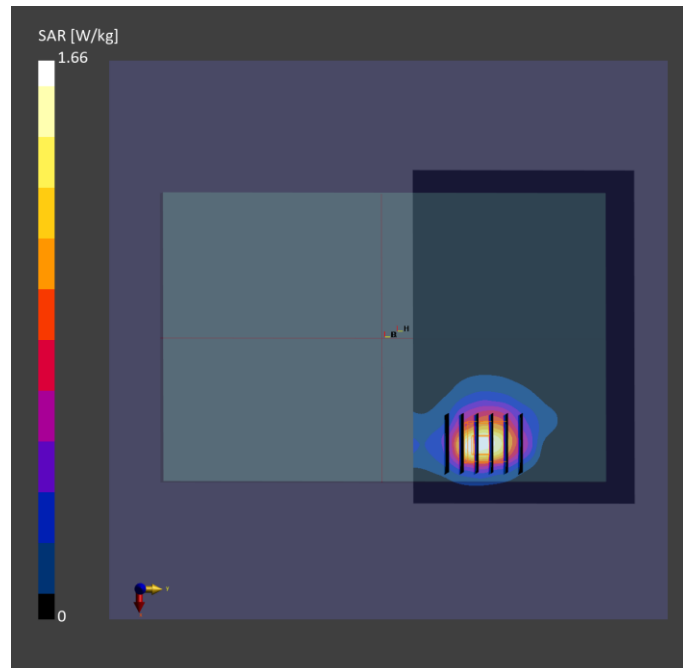
Phantom	Tissue Simulating Liquid	Probe Calibration Date	DAE Calibration Date
ELI V8.0 (20deg probe tilt) - 2141	HBBL-600-10000	EX3DV4 - SN7757 / 2023-08-22	DAE4 Sn1669 / 2023-05-23

Scan Setup

	Area Scan	Zoom Scan
Grid Extents [mm]	180.0 x 120.0	32.0 x 32.0 x 30.0
Grid Steps [mm]	15.0 x 15.0	8.0 x 8.0 x 5.0
Sensor Surface [mm]	3.0	1.4
Graded Grid	N/A	Yes
Grading Ratio	N/A	1.4

Measurement Results

	Area Scan	Zoom Scan
psSAR-1g [W/kg]	0.912	0.949
psSAR-10g [W/kg]	0.492	0.407
Power Drift [dB]		-0.01
TSL Correction	Positive only	Positive only
M2 / M1 [%]		67.3
Dist 3dB Peak [mm]		9.8



Test Date : 2024-01-04 | Ambient Temp : 22.4 °C | Tissue Temp : 21.9 °C

Test Mode

20_LTE Band 71_QPSK20M_Rear Face_0mm_Ch133322_1RB_Offset0_Ant Main

Device Under Test Properties

Manufacturer or Brand	Model No. or Code Name	Sample No. or IMEI	DUT Type
Getac	ZX80	A008	Tablet

Exposure Conditions

Phantom Section	Band	Group, UID	Frequency [MHz], Channel Number	Conversion Factor	TSL Conductivity [S/m]	TSL Permittivity
Flat	Band 71	LTE-FDD, 10169 - CAF	683.000, 133322	9.1	0.874	42.5

Hardware Setup

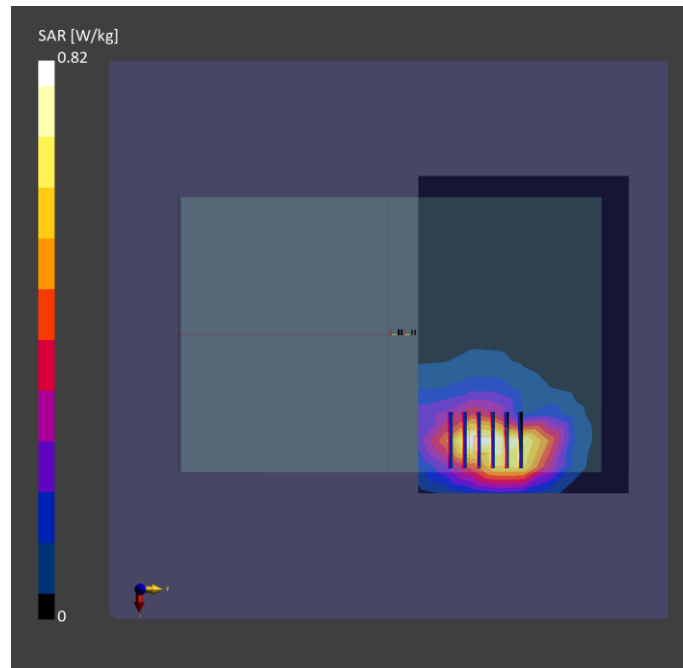
Phantom	Tissue Simulating Liquid	Probe Calibration Date	DAE Calibration Date
ELI V8.0 (20deg probe tilt) - 2141	HBBL-600-10000	EX3DV4 - SN7757 / 2023-08-22	DAE4 Sn1669 / 2023-05-23

Scan Setup

	Area Scan	Zoom Scan
Grid Extents [mm]	180.0 x 120.0	32.0 x 32.0 x 30.0
Grid Steps [mm]	15.0 x 15.0	8.0 x 8.0 x 5.0
Sensor Surface [mm]	3.0	1.4
Graded Grid	N/A	Yes
Grading Ratio	N/A	1.4

Measurement Results

	Area Scan	Zoom Scan
psSAR-1g [W/kg]	0.721	0.826
psSAR-10g [W/kg]	0.479	0.461
Power Drift [dB]		-0.01
TSL Correction	Positive only	Positive only
M2 / M1 [%]		68.0
Dist 3dB Peak [mm]		11.4



Test Date : 2024-01-09 | Ambient Temp : 22.6 °C | Tissue Temp : 22.4 °C

Test Mode

21_NR Band n2_DFT-s QPSK20M_Rear Face_0mm_Ch372000_1RB_Offset1_Ant Main

Device Under Test Properties

Manufacturer or Brand	Model No. or Code Name	Sample No. or IMEI	DUT Type
Getac	ZX80	A004	Tablet

Exposure Conditions

Phantom Section	Band	Group, UID	Frequency [MHz], Channel Number	Conversion Factor	TSL Conductivity [S/m]	TSL Permittivity
Flat	Band n2	5G NR FR1 FDD, 10931 - AAC	1860.000, 372000	7.7	1.42	41.5

Hardware Setup

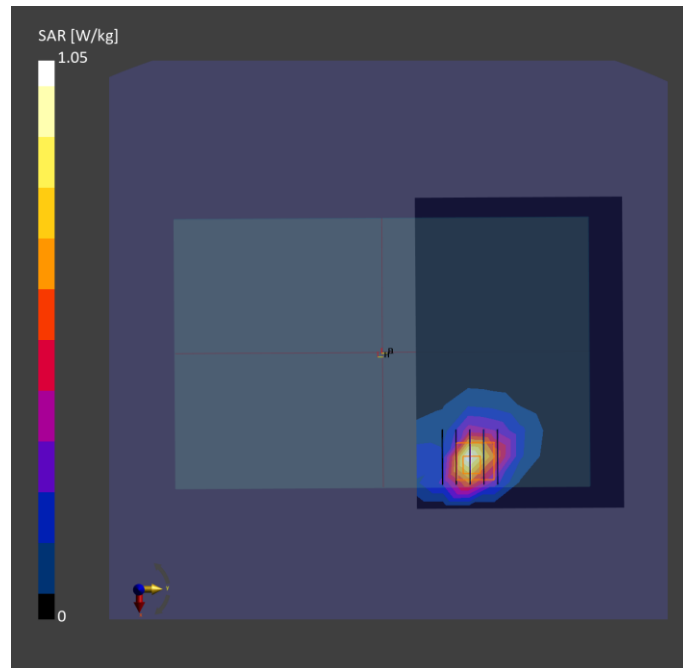
Phantom	Tissue Simulating Liquid	Probe Calibration Date	DAE Calibration Date
ELI V8.0 (20deg probe tilt) - 2179	HBBL-600-10000	EX3DV4 - SN7737 / 2023-06-05	DAE4 Sn1743 / 2023-08-17

Scan Setup

	Area Scan	Zoom Scan
Grid Extents [mm]	180.0 x 120.0	32.0 x 32.0 x 30.0
Grid Steps [mm]	15.0 x 15.0	8.0 x 8.0 x 5.0
Sensor Surface [mm]	3.0	1.4
Graded Grid	N/A	Yes
Grading Ratio	N/A	1.4

Measurement Results

	Area Scan	Zoom Scan
psSAR-1g [W/kg]	0.831	0.937
psSAR-10g [W/kg]	0.432	0.443
Power Drift [dB]		0.03
TSL Correction	Positive only	Positive only
M2 / M1 [%]		44.1
Dist 3dB Peak [mm]		8.6



Test Date : 2024-01-03 | Ambient Temp : 22.4 °C | Tissue Temp : 22.0 °C

Test Mode

22_NR Band n5_DFT-s QPSK20M_Rear Face_0mm_Ch167300_1RB_Offset1_Ant Main

Device Under Test Properties

Manufacturer or Brand	Model No. or Code Name	Sample No. or IMEI	DUT Type
Getac	ZX80	A008	Tablet

Exposure Conditions

Phantom Section	Band	Group, UID	Frequency [MHz], Channel Number	Conversion Factor	TSL Conductivity [S/m]	TSL Permittivity
Flat	Band n5	5G NR FR1 FDD, 10931 - AAC	836.500, 167300	8.91	0.939	43.0

Hardware Setup

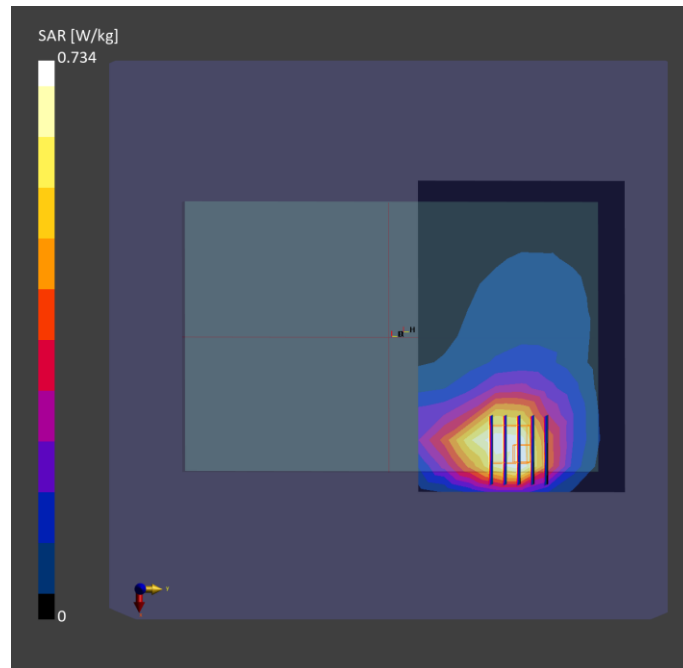
Phantom	Tissue Simulating Liquid	Probe Calibration Date	DAE Calibration Date
ELI V8.0 (20deg probe tilt) - 2141	HBBL-600-10000	EX3DV4 - SN7757 / 2023-08-22	DAE4 Sn1669 / 2023-05-23

Scan Setup

	Area Scan	Zoom Scan
Grid Extents [mm]	180.0 x 120.0	32.0 x 32.0 x 30.0
Grid Steps [mm]	15.0 x 15.0	8.0 x 8.0 x 5.0
Sensor Surface [mm]	3.0	1.4
Graded Grid	N/A	Yes
Grading Ratio	N/A	1.4

Measurement Results

	Area Scan	Zoom Scan
psSAR-1g [W/kg]	0.691	0.750
psSAR-10g [W/kg]	0.468	0.455
Power Drift [dB]		0.01
TSL Correction	Positive only	Positive only
M2 / M1 [%]		68.9
Dist 3dB Peak [mm]		10.2



Test Date : 2024-01-05 | Ambient Temp : 22.6 °C | Tissue Temp : 22.3 °C

Test Mode

23_NR Band n7_DFT-s QPSK20M_Rear Face_0mm_Ch507000_1RB_Offset1_Ant Main

Device Under Test Properties

Manufacturer or Brand	Model No. or Code Name	Sample No. or IMEI	DUT Type
Getac	ZX80	A008	Tablet

Exposure Conditions

Phantom Section	Band	Group, UID	Frequency [MHz], Channel Number	Conversion Factor	TSL Conductivity [S/m]	TSL Permittivity
Flat	Band n7	5G NR FR1 FDD, 10931 - AAC	2535.000, 507000	6.95	1.86	39.3

Hardware Setup

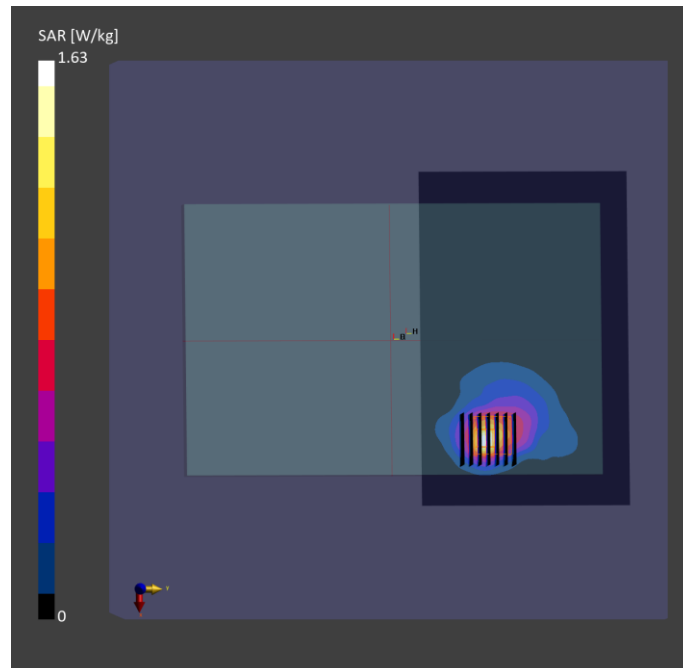
Phantom	Tissue Simulating Liquid	Probe Calibration Date	DAE Calibration Date
ELI V8.0 (20deg probe tilt) - 2141	HBBL-600-10000	EX3DV4 - SN7757 / 2023-08-22	DAE4 Sn1669 / 2023-05-23

Scan Setup

	Area Scan	Zoom Scan
Grid Extents [mm]	192.0 x 120.0	30.0 x 30.0 x 30.0
Grid Steps [mm]	12.0 x 12.0	5.0 x 5.0 x 5.0
Sensor Surface [mm]	3.0	1.4
Graded Grid	N/A	Yes
Grading Ratio	N/A	1.4

Measurement Results

	Area Scan	Zoom Scan
psSAR-1g [W/kg]	0.954	0.911
psSAR-10g [W/kg]	0.445	0.408
Power Drift [dB]		-0.08
TSL Correction	Positive only	Positive only
M2 / M1 [%]		69.5
Dist 3dB Peak [mm]		9.5



Test Date : 2024-01-09 | Ambient Temp : 22.6 °C | Tissue Temp : 22.4 °C

Test Mode

24_NR Band n25_DFT-s QPSK20M_Rear Face_0mm_Ch376500_1RB_Offset1_Ant Main

Device Under Test Properties

Manufacturer or Brand	Model No. or Code Name	Sample No. or IMEI	DUT Type
Getac	ZX80	A004	Tablet

Exposure Conditions

Phantom Section	Band	Group, UID	Frequency [MHz], Channel Number	Conversion Factor	TSL Conductivity [S/m]	TSL Permittivity
Flat	Band n25	5G NR FR1 FDD, 10931 - AAC	1882.500, 376500	7.7	1.44	41.5

Hardware Setup

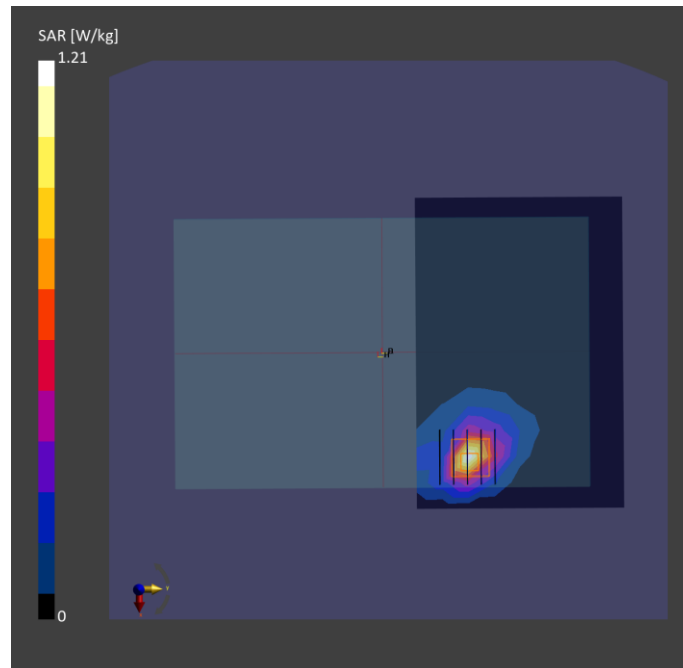
Phantom	Tissue Simulating Liquid	Probe Calibration Date	DAE Calibration Date
ELI V8.0 (20deg probe tilt) - 2179	HBBL-600-10000	EX3DV4 - SN7737 / 2023-06-05	DAE4 Sn1743 / 2023-08-17

Scan Setup

	Area Scan	Zoom Scan
Grid Extents [mm]	180.0 x 120.0	32.0 x 32.0 x 30.0
Grid Steps [mm]	15.0 x 15.0	8.0 x 8.0 x 5.0
Sensor Surface [mm]	3.0	1.4
Graded Grid	N/A	Yes
Grading Ratio	N/A	1.4

Measurement Results

	Area Scan	Zoom Scan
psSAR-1g [W/kg]	0.897	0.941
psSAR-10g [W/kg]	0.441	0.444
Power Drift [dB]		0.03
TSL Correction	Positive only	Positive only
M2 / M1 [%]		47.7
Dist 3dB Peak [mm]		8.7



Test Date : 2024-01-09 | Ambient Temp : 22.6 °C | Tissue Temp : 22.4 °C

Test Mode

25_NR Band n30_DFT-s QPSK10M_Rear Face_0mm_Ch462000_1RB_Offset1_Ant Main

Device Under Test Properties

Manufacturer or Brand	Model No. or Code Name	Sample No. or IMEI	DUT Type
Getac	ZX80	A004	Tablet

Exposure Conditions

Phantom Section	Band	Group, UID	Frequency [MHz], Channel Number	Conversion Factor	TSL Conductivity [S/m]	TSL Permittivity
Flat	Band n30	5G NR FR1 FDD, 10929 - AAD	2310.000, 462000	7.32	1.71	40.9

Hardware Setup

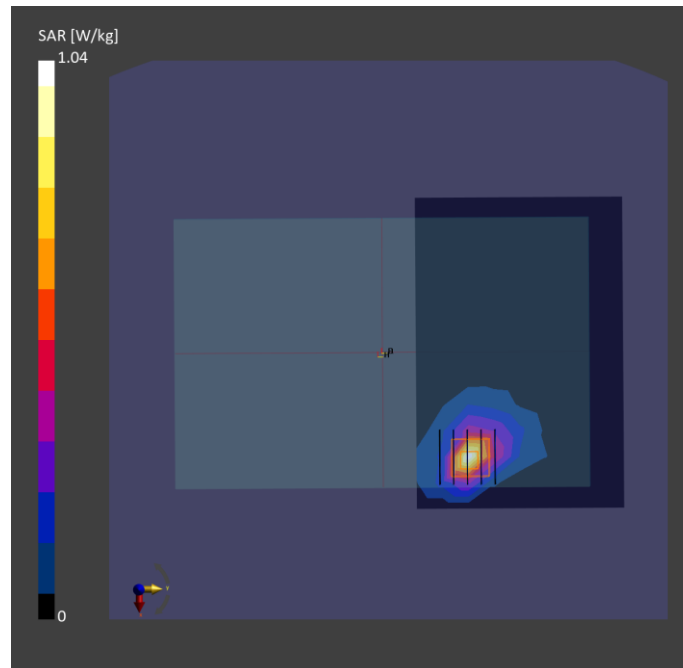
Phantom	Tissue Simulating Liquid	Probe Calibration Date	DAE Calibration Date
ELI V8.0 (20deg probe tilt) - 2179	HBBL-600-10000	EX3DV4 - SN7737 / 2023-06-05	DAE4 Sn1743 / 2023-08-17

Scan Setup

	Area Scan	Zoom Scan
Grid Extents [mm]	180.0 x 120.0	32.0 x 32.0 x 30.0
Grid Steps [mm]	15.0 x 15.0	8.0 x 8.0 x 5.0
Sensor Surface [mm]	3.0	1.4
Graded Grid	N/A	Yes
Grading Ratio	N/A	1.4

Measurement Results

	Area Scan	Zoom Scan
psSAR-1g [W/kg]	0.750	0.772
psSAR-10g [W/kg]	0.346	0.355
Power Drift [dB]		0.02
TSL Correction	Positive only	Positive only
M2 / M1 [%]		45.1
Dist 3dB Peak [mm]		8.7



Test Date : 2024-01-06 | Ambient Temp : 22.7 °C | Tissue Temp : 22.4 °C

Test Mode

26_NR Band n38_DFT-s QPSK20M_Rear Face_0mm_Ch519000_1RB_Offset1_Ant Aux

Device Under Test Properties

Manufacturer or Brand	Model No. or Code Name	Sample No. or IMEI	DUT Type
Getac	ZX80	A004	Tablet

Exposure Conditions

Phantom Section	Band	Group, UID	Frequency [MHz], Channel Number	Conversion Factor	TSL Conductivity [S/m]	TSL Permittivity
Flat	Band n38	5G NR FR1 TDD, 10900 - AAC	2595.000, 519000	7.17	1.95	40.9

Hardware Setup

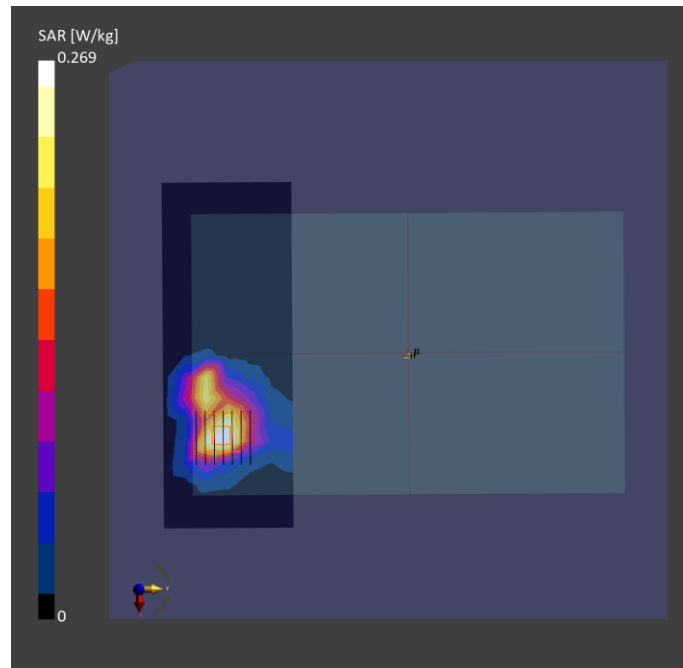
Phantom	Tissue Simulating Liquid	Probe Calibration Date	DAE Calibration Date
ELI V8.0 (20deg probe tilt) - 2179	HBBL-600-10000	EX3DV4 - SN7737 / 2023-06-05	DAE4 Sn1743 / 2023-08-17

Scan Setup

	Area Scan	Zoom Scan
Grid Extents [mm]	192.0 x 72.0	30.0 x 30.0 x 30.0
Grid Steps [mm]	12.0 x 12.0	5.0 x 5.0 x 5.0
Sensor Surface [mm]	3.0	1.4
Graded Grid	N/A	Yes
Grading Ratio	N/A	1.4

Measurement Results

	Area Scan	Zoom Scan
psSAR-1g [W/kg]	0.226	0.254
psSAR-10g [W/kg]	0.113	0.119
Power Drift [dB]		0.04
TSL Correction	Positive only	Positive only
M2 / M1 [%]		48.2
Dist 3dB Peak [mm]		9.3



Test Date : 2024-01-09 | Ambient Temp : 22.6 °C | Tissue Temp : 22.4 °C

Test Mode

27_NR Band n41_DFT-s QPSK100M_Rear Face_0mm_Ch518598_1RB_Offset1_Ant Aux

Device Under Test Properties

Manufacturer or Brand	Model No. or Code Name	Sample No. or IMEI	DUT Type
Getac	ZX80	A004	Tablet

Exposure Conditions

Phantom Section	Band	Group, UID	Frequency [MHz], Channel Number	Conversion Factor	TSL Conductivity [S/m]	TSL Permittivity
Flat	Band n41	5G NR FR1 TDD, 10866 - AAF	2592.990, 518598	7.17	1.95	40.9

Hardware Setup

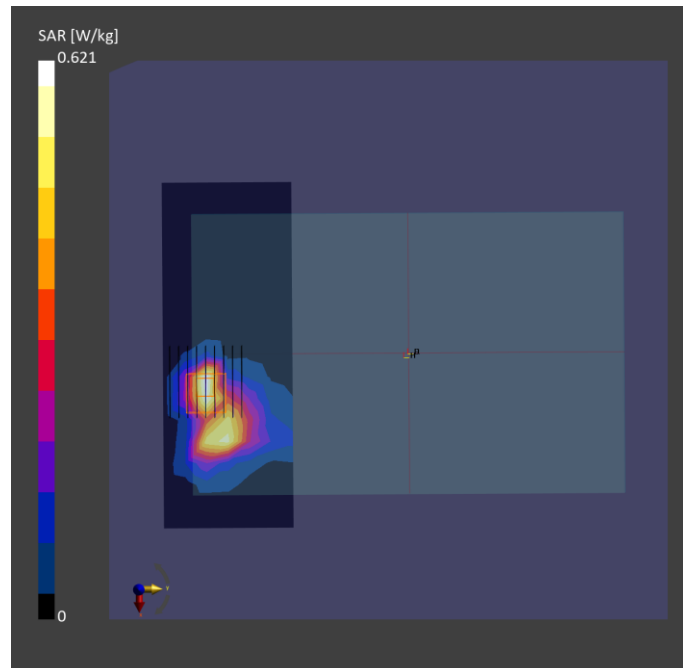
Phantom	Tissue Simulating Liquid	Probe Calibration Date	DAE Calibration Date
ELI V8.0 (20deg probe tilt) - 2179	HBBL-600-10000	EX3DV4 - SN7737 / 2023-06-05	DAE4 Sn1743 / 2023-08-17

Scan Setup

	Area Scan	Zoom Scan
Grid Extents [mm]	192.0 x 72.0	30.0 x 30.0 x 30.0
Grid Steps [mm]	12.0 x 12.0	5.0 x 5.0 x 5.0
Sensor Surface [mm]	3.0	1.4
Graded Grid	N/A	Yes
Grading Ratio	N/A	1.4

Measurement Results

	Area Scan	Zoom Scan
psSAR-1g [W/kg]	0.492	0.537
psSAR-10g [W/kg]	0.236	0.227
Power Drift [dB]		0.01
TSL Correction	Positive only	Positive only
M2 / M1 [%]		41.3
Dist 3dB Peak [mm]		6.8



Test Date : 2024-01-08 | Ambient Temp : 22.4 °C | Tissue Temp : 22.1 °C

Test Mode

28_NR Band n48_DFT-s QPSK40M_Rear Face_0mm_Ch642888_1RB_Offset1_Ant MIMO 1

Device Under Test Properties

Manufacturer or Brand	Model No. or Code Name	Sample No. or IMEI	DUT Type
Getac	ZX80	A008	Tablet

Exposure Conditions

Phantom Section	Band	Group, UID	Frequency [MHz], Channel Number	Conversion Factor	TSL Conductivity [S/m]	TSL Permittivity
Flat	Band n48	5G NR FR1 TDD, 10903 - AAD	3643.320, 642888	6.87	2.86	38.7

Hardware Setup

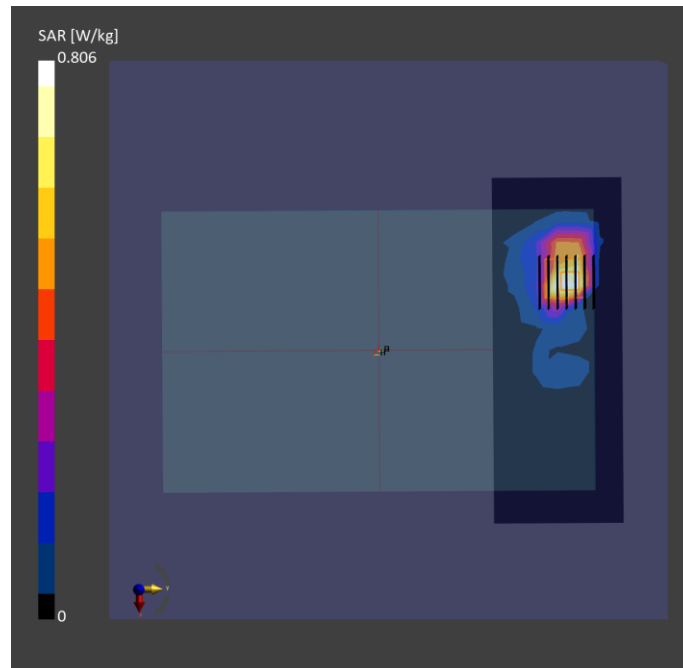
Phantom	Tissue Simulating Liquid	Probe Calibration Date	DAE Calibration Date
ELI V8.0 (20deg probe tilt) - 2179	HBBL-600-10000	EX3DV4 - SN7737 / 2023-06-05	DAE4 Sn1743 / 2023-08-17

Scan Setup

	Area Scan	Zoom Scan
Grid Extents [mm]	192.0 x 72.0	30.0 x 30.0 x 28.0
Grid Steps [mm]	12.0 x 12.0	5.0 x 5.0 x 2.5
Sensor Surface [mm]	3.0	1.4
Graded Grid	N/A	Yes
Grading Ratio	N/A	1.4

Measurement Results

	Area Scan	Zoom Scan
psSAR-1g [W/kg]	0.676	0.937
psSAR-10g [W/kg]	0.285	0.319
Power Drift [dB]		-0.02
TSL Correction	Positive only	Positive only
M2 / M1 [%]		60.0
Dist 3dB Peak [mm]		6.8



Test Date : 2024-01-09 | Ambient Temp : 22.6 °C | Tissue Temp : 22.4 °C

Test Mode

29_NR Band n66_DFT-s QPSK20M_Rear Face_0mm_Ch344000_1RB_Offset1_Ant Main

Device Under Test Properties

Manufacturer or Brand	Model No. or Code Name	Sample No. or IMEI	DUT Type
Getac	ZX80	A008	Tablet

Exposure Conditions

Phantom Section	Band	Group, UID	Frequency [MHz], Channel Number	Conversion Factor	TSL Conductivity [S/m]	TSL Permittivity
Flat	Band n66	5G NR FR1 FDD, 10931 - AAC	1720.000, 344000	8.03	1.34	41.7

Hardware Setup

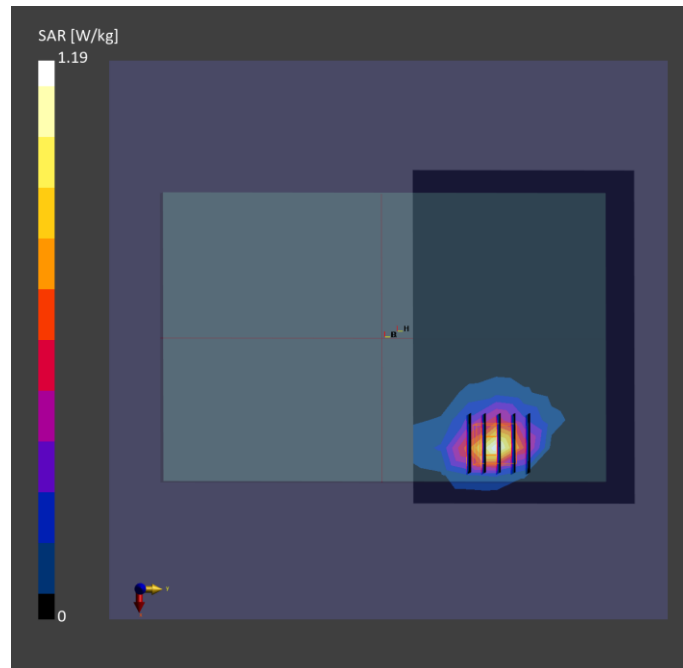
Phantom	Tissue Simulating Liquid	Probe Calibration Date	DAE Calibration Date
ELI V8.0 (20deg probe tilt) - 2179	HBBL-600-10000	EX3DV4 - SN7737 / 2023-06-05	DAE4 Sn1743 / 2023-08-17

Scan Setup

	Area Scan	Zoom Scan
Grid Extents [mm]	180.0 x 120.0	32.0 x 32.0 x 30.0
Grid Steps [mm]	15.0 x 15.0	8.0 x 8.0 x 5.0
Sensor Surface [mm]	3.0	1.4
Graded Grid	N/A	Yes
Grading Ratio	N/A	1.4

Measurement Results

	Area Scan	Zoom Scan
psSAR-1g [W/kg]	0.926	0.950
psSAR-10g [W/kg]	0.385	0.415
Power Drift [dB]		-0.13
TSL Correction	Positive only	Positive only
M2 / M1 [%]		58.4
Dist 3dB Peak [mm]		9.4



Test Date : 2024-01-04 | Ambient Temp : 22.4 °C | Tissue Temp : 21.9 °C

Test Mode

30_NR Band 71_DFT-s QPSK20M_Rear Face_0mm_50RB_Offset28_Ch136100_Ant Main

Device Under Test Properties

Manufacturer or Brand	Model No. or Code Name	Sample No. or IMEI	DUT Type
Getac	ZX80	A008	Tablet

Exposure Conditions

Phantom Section	Band	Group, UID	Frequency [MHz], Channel Number	Conversion Factor	TSL Conductivity [S/m]	TSL Permittivity
Flat	Band n71	5G NR FR1 FDD, 10931 - AAC	680.500, 136100	9.1	0.868	43.4

Hardware Setup

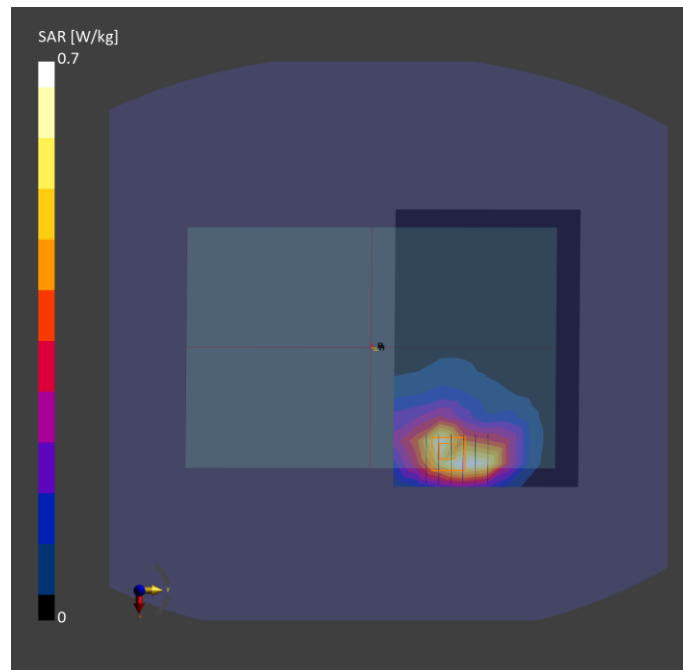
Phantom	Tissue Simulating Liquid	Probe Calibration Date	DAE Calibration Date
ELI V8.0 (20deg probe tilt) - 2141	HBBL-600-10000	EX3DV4 - SN7757 / 2023-08-22	DAE4 Sn1669 / 2023-05-23

Scan Setup

	Area Scan	Zoom Scan
Grid Extents [mm]	180.0 x 120.0	32.0 x 32.0 x 30.0
Grid Steps [mm]	15.0 x 15.0	8.0 x 8.0 x 5.0
Sensor Surface [mm]	3.0	1.4
Graded Grid	N/A	Yes
Grading Ratio	N/A	1.4

Measurement Results

	Area Scan	Zoom Scan
psSAR-1g [W/kg]	0.624	0.743
psSAR-10g [W/kg]	0.413	0.436
Power Drift [dB]		0
TSL Correction	Positive only	Positive only
M2 / M1 [%]		54.4
Dist 3dB Peak [mm]		11.6



Test Date : 2024-01-10 | Ambient Temp : 22.6 °C | Tissue Temp : 22.2 °C

Test Mode

31_NR Band n77_DFT-s QPSK100M_Rear Face_0mm_Ch650000_1RB_Offset1_Ant MIMO 1

Device Under Test Properties

Manufacturer or Brand	Model No. or Code Name	Sample No. or IMEI	DUT Type
Getac	ZX80	A004	Tablet

Exposure Conditions

Phantom Section	Band	Group, UID	Frequency [MHz], Channel Number	Conversion Factor	TSL Conductivity [S/m]	TSL Permittivity
Flat	Band n77	5G NR FR1 TDD, 10866 - AAF	3750.000, 650000	6.68	3.00	39.4

Hardware Setup

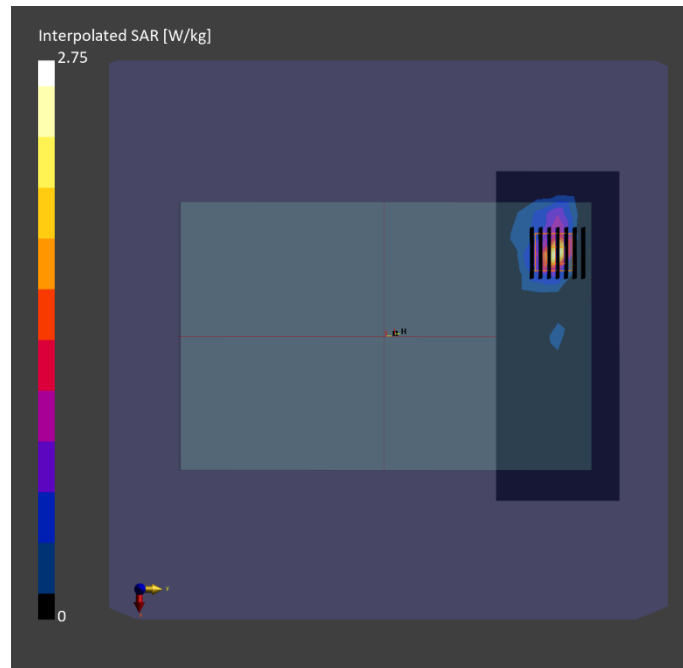
Phantom	Tissue Simulating Liquid	Probe Calibration Date	DAE Calibration Date
ELI V8.0 (20deg probe tilt) - 2179	HBBL-600-10000	EX3DV4 - SN7737 / 2023-06-05	DAE4 Sn1743 / 2023-08-17

Scan Setup

	Area Scan	Zoom Scan
Grid Extents [mm]	192.0 x 72.0	30.0 x 30.0 x 28.0
Grid Steps [mm]	12.0 x 12.0	5.0 x 5.0 x 2.5
Sensor Surface [mm]	3.0	1.4
Graded Grid	N/A	Yes
Grading Ratio	N/A	1.4

Measurement Results

	Area Scan	Zoom Scan
psSAR-1g [W/kg]	0.921	0.936
psSAR-10g [W/kg]	0.298	0.307
Power Drift [dB]		0.08
TSL Correction	Positive only	Positive only
M2 / M1 [%]		58.6
Dist 3dB Peak [mm]		5.1



Test Date : 2024-01-10 | Ambient Temp : 22.6 °C | Tissue Temp : 22.2 °C

Test Mode

33_NR Band n78_DFT-s QPSK100M_Rear Face_0mm_Ch650000_1RB_Offset1_Ant MIMO 1

Device Under Test Properties

Manufacturer or Brand	Model No. or Code Name	Sample No. or IMEI	DUT Type
Getac	ZX80	A008	Tablet

Exposure Conditions

Phantom Section	Band	Group, UID	Frequency [MHz], Channel Number	Conversion Factor	TSL Conductivity [S/m]	TSL Permittivity
Flat	Band n78	5G NR FR1 TDD, 10866 - AAF	3750.000, 650000	6.68	3.00	39.4

Hardware Setup

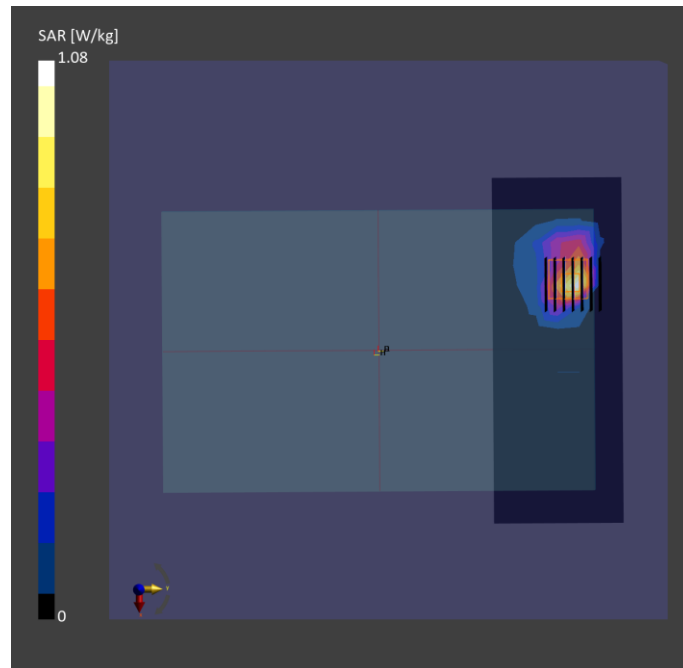
Phantom	Tissue Simulating Liquid	Probe Calibration Date	DAE Calibration Date
ELI V8.0 (20deg probe tilt) - 2179	HBBL-600-10000	EX3DV4 - SN7737 / 2023-06-05	DAE4 Sn1743 / 2023-08-17

Scan Setup

	Area Scan	Zoom Scan
Grid Extents [mm]	192.0 x 72.0	30.0 x 30.0 x 28.0
Grid Steps [mm]	12.0 x 12.0	5.0 x 5.0 x 2.5
Sensor Surface [mm]	3.0	1.4
Graded Grid	N/A	Yes
Grading Ratio	N/A	1.4

Measurement Results

	Area Scan	Zoom Scan
psSAR-1g [W/kg]	0.942	0.949
psSAR-10g [W/kg]	0.299	0.304
Power Drift [dB]		-0.01
TSL Correction	Positive only	Positive only
M2 / M1 [%]		58.2
Dist 3dB Peak [mm]		5.5



Test Date : 2023-12-29 | Ambient Temp : 22.2 °C | Tissue Temp : 21.9 °C

Test Mode

41_WLAN2.4G_802.11n_HT40_Rear Face_0mm_Ch3_Ant 1+2

Device Under Test Properties

Manufacturer or Brand	Model No. or Code Name	Sample No. or IMEI	DUT Type
Getac	ZX80	A008	Tablet

Exposure Conditions

Phantom Section	Band	Group, UID	Frequency [MHz], Channel Number	Conversion Factor	TSL Conductivity [S/m]	TSL Permittivity
Flat	WLAN 2.4GHz	WLAN, 10599 - AAC	2422.000, 3	7.05	1.79	40.2

Hardware Setup

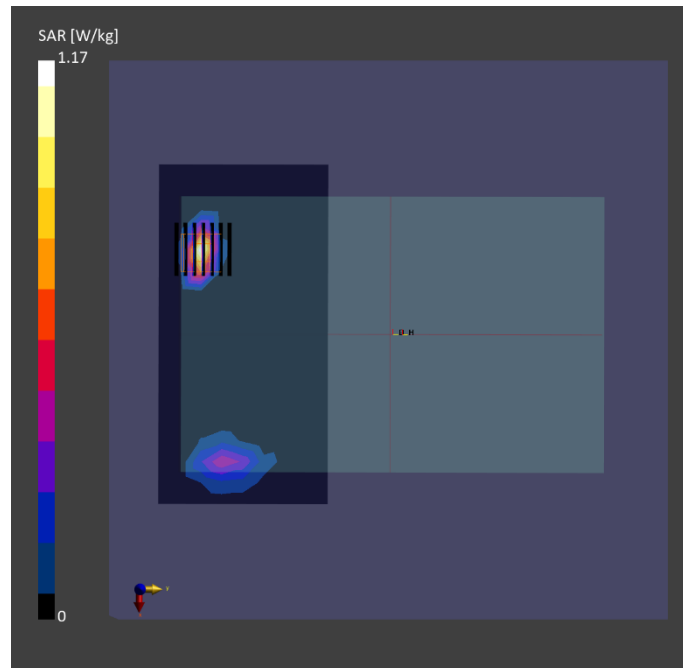
Phantom	Tissue Simulating Liquid	Probe Calibration Date	DAE Calibration Date
ELI V8.0 (20deg probe tilt) - 2141	HBBL-600-10000	EX3DV4 - SN7757 / 2023-08-22	DAE4 Sn1669 / 2023-05-23

Scan Setup

	Area Scan	Zoom Scan
Grid Extents [mm]	192.0 x 96.0	30.0 x 30.0 x 30.0
Grid Steps [mm]	12.0 x 12.0	5.0 x 5.0 x 5.0
Sensor Surface [mm]	3.0	1.4
Graded Grid	N/A	Yes
Grading Ratio	N/A	1.4

Measurement Results

	Area Scan	Zoom Scan
psSAR-1g [W/kg]	0.804	0.856
psSAR-10g [W/kg]	0.299	0.315
Power Drift [dB]		-0.01
TSL Correction	Positive only	Positive only
M2 / M1 [%]		63.6
Dist 3dB Peak [mm]		6.0



Test Date : 2023-12-30 | Ambient Temp : 22.5 °C | Tissue Temp : 22.1 °C

Test Mode

42_WLAN5.3G_802.11ac VHT160_Rear Face_0mm_Ch50_Ant 2

Device Under Test Properties

Manufacturer or Brand	Model No. or Code Name	Sample No. or IMEI	DUT Type
Getac	ZX80	A008	Tablet

Exposure Conditions

Phantom Section	Band	Group, UID	Frequency [MHz], Channel Number	Conversion Factor	TSL Conductivity [S/m]	TSL Permittivity
Flat	WLAN 5GHz	WLAN, 10554 - AAD	5250.000, 50	5.02	4.60	35.8

Hardware Setup

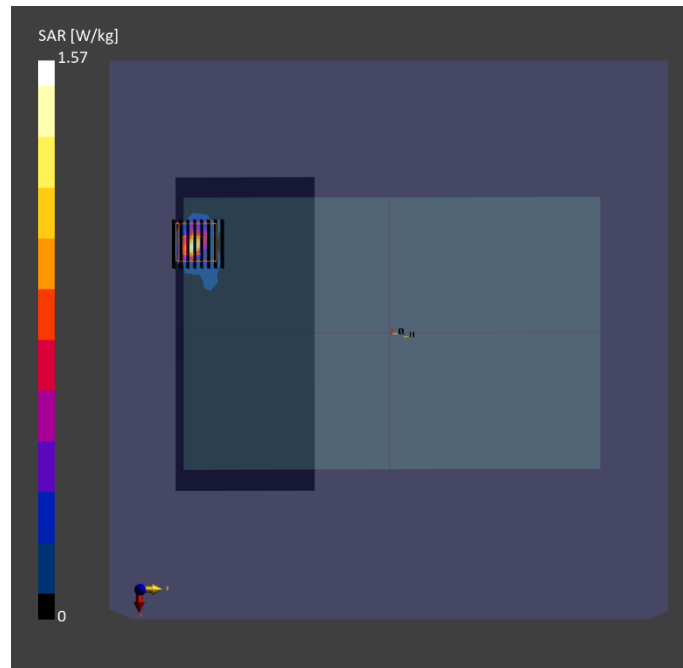
Phantom	Tissue Simulating Liquid	Probe Calibration Date	DAE Calibration Date
ELI V8.0 (20deg probe tilt) - 2141	HBBL-600-10000	EX3DV4 - SN7757 / 2023-08-22	DAE4 Sn1669 / 2023-05-23

Scan Setup

	Area Scan	Zoom Scan
Grid Extents [mm]	180.0 x 80.0	24.0 x 24.0 x 22.0
Grid Steps [mm]	10.0 x 10.0	4.0 x 4.0 x 1.4
Sensor Surface [mm]	3.0	1.4
Graded Grid	N/A	Yes
Grading Ratio	N/A	1.4

Measurement Results

	Area Scan	Zoom Scan
psSAR-1g [W/kg]	0.876	0.959
psSAR-10g [W/kg]	0.231	0.236
Power Drift [dB]		-0.03
TSL Correction	Positive only	Positive only
M2 / M1 [%]		62.4
Dist 3dB Peak [mm]		4.4



Test Date : 2023-12-30 | Ambient Temp : 22.5 °C | Tissue Temp : 22.1 °C

Test Mode

43_WLAN5.6G_802.11ac VHT160_Rear Face_0mm_Ch114_Ant 1+2

Device Under Test Properties

Manufacturer or Brand	Model No. or Code Name	Sample No. or IMEI	DUT Type
Getac	ZX80	A008	Tablet

Exposure Conditions

Phantom Section	Band	Group, UID	Frequency [MHz], Channel Number	Conversion Factor	TSL Conductivity [S/m]	TSL Permittivity
Flat	WLAN 5GHz	WLAN, 10554 - AAD	5570.000, 114	4.29	4.95	35.2

Hardware Setup

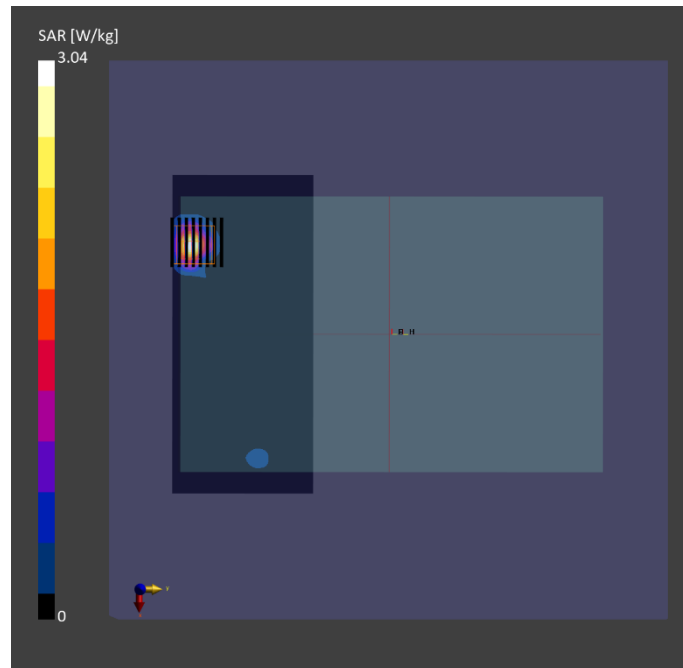
Phantom	Tissue Simulating Liquid	Probe Calibration Date	DAE Calibration Date
ELI V8.0 (20deg probe tilt) - 2141	HBBL-600-10000	EX3DV4 - SN7757 / 2023-08-22	DAE4 Sn1669 / 2023-05-23

Scan Setup

	Area Scan	Zoom Scan
Grid Extents [mm]	180.0 x 80.0	24.0 x 24.0 x 22.0
Grid Steps [mm]	10.0 x 10.0	4.0 x 4.0 x 1.4
Sensor Surface [mm]	3.0	1.4
Graded Grid	N/A	Yes
Grading Ratio	N/A	1.4

Measurement Results

	Area Scan	Zoom Scan
psSAR-1g [W/kg]	0.939	1.06
psSAR-10g [W/kg]	0.268	0.297
Power Drift [dB]		-0.14
TSL Correction	Positive only	Positive only
M2 / M1 [%]		59.5
Dist 3dB Peak [mm]		4.6



Test Date : 2023-12-30 | Ambient Temp : 22.5 °C | Tissue Temp : 22.1 °C

Test Mode

45_WLAN5.8G_802.11ac VHT160_Rear Face_0mm_Ch155_Ant 2

Device Under Test Properties

Manufacturer or Brand	Model No. or Code Name	Sample No. or IMEI	DUT Type
Getac	ZX80	A008	Tablet

Exposure Conditions

Phantom Section	Band	Group, UID	Frequency [MHz], Channel Number	Conversion Factor	TSL Conductivity [S/m]	TSL Permittivity
Flat	WLAN 5GHz	WLAN, 10544 - AAC	5775.000, 155	4.36	5.19	34.9

Hardware Setup

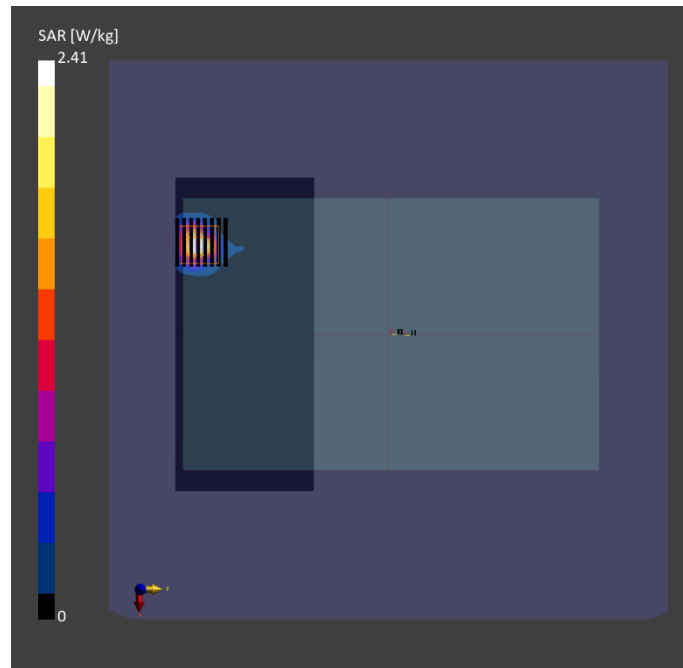
Phantom	Tissue Simulating Liquid	Probe Calibration Date	DAE Calibration Date
ELI V8.0 (20deg probe tilt) - 2141	HBBL-600-10000	EX3DV4 - SN7757 / 2023-08-22	DAE4 Sn1669 / 2023-05-23

Scan Setup

	Area Scan	Zoom Scan
Grid Extents [mm]	180.0 x 80.0	24.0 x 24.0 x 22.0
Grid Steps [mm]	10.0 x 10.0	4.0 x 4.0 x 1.4
Sensor Surface [mm]	3.0	1.4
Graded Grid	N/A	Yes
Grading Ratio	N/A	1.4

Measurement Results

	Area Scan	Zoom Scan
psSAR-1g [W/kg]	0.949	0.942
psSAR-10g [W/kg]	0.297	0.306
Power Drift [dB]		-0.01
TSL Correction	Positive only	Positive only
M2 / M1 [%]		56.8
Dist 3dB Peak [mm]		5.4



Test Date : 2023-12-29 | Ambient Temp : 22.2 °C | Tissue Temp : 21.9 °C

Test Mode

46_Bluetooth_8-DPSK_Rear Face_0mm_Ch39_Ant 2

Device Under Test Properties

Manufacturer or Brand	Model No. or Code Name	Sample No. or IMEI	DUT Type
Getac	ZX80	A008	Tablet

Exposure Conditions

Phantom Section	Band	Group, UID	Frequency [MHz], Channel Number	Conversion Factor	TSL Conductivity [S/m]	TSL Permittivity
Flat	ISM 2.4 GHz Band	Bluetooth, 10032 - CAA	2441.000, 39	7.05	1.80	40.2

Hardware Setup

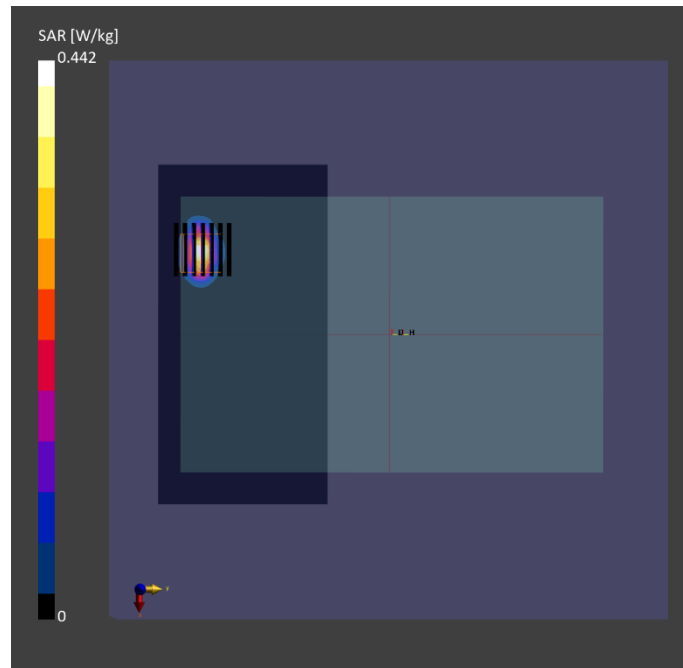
Phantom	Tissue Simulating Liquid	Probe Calibration Date	DAE Calibration Date
ELI V8.0 (20deg probe tilt) - 2141	HBBL-600-10000	EX3DV4 - SN7757 / 2023-08-22	DAE4 Sn1669 / 2023-05-23

Scan Setup

	Area Scan	Zoom Scan
Grid Extents [mm]	192.0 x 96.0	30.0 x 30.0 x 30.0
Grid Steps [mm]	12.0 x 12.0	5.0 x 5.0 x 5.0
Sensor Surface [mm]	3.0	1.4
Graded Grid	N/A	Yes
Grading Ratio	N/A	1.4

Measurement Results

	Area Scan	Zoom Scan
psSAR-1g [W/kg]	0.229	0.238
psSAR-10g [W/kg]	0.085	0.086
Power Drift [dB]		-0.13
TSL Correction	Positive only	Positive only
M2 / M1 [%]		63.5
Dist 3dB Peak [mm]		6.0



Test Date : 2023-12-29 | Ambient Temp : 22.2 °C | Tissue Temp : 21.9 °C

Test Mode

47_UNII-5_802.11ax_HE160_Rear Face_0mm_Ch15_Ant 2

Device Under Test Properties

Manufacturer or Brand	Model No. or Code Name	Sample No. or IMEI	DUT Type
Getac	ZX80	A008	Tablet

Exposure Conditions

Phantom Section	Band	Group, UID	Frequency [MHz], Channel Number	Conversion Factor	TSL Conductivity [S/m]	TSL Permittivity
Flat	U-NII-5	WLAN, 10755 - AAC	6025.000, 15	4.47	5.44	34.7

Hardware Setup

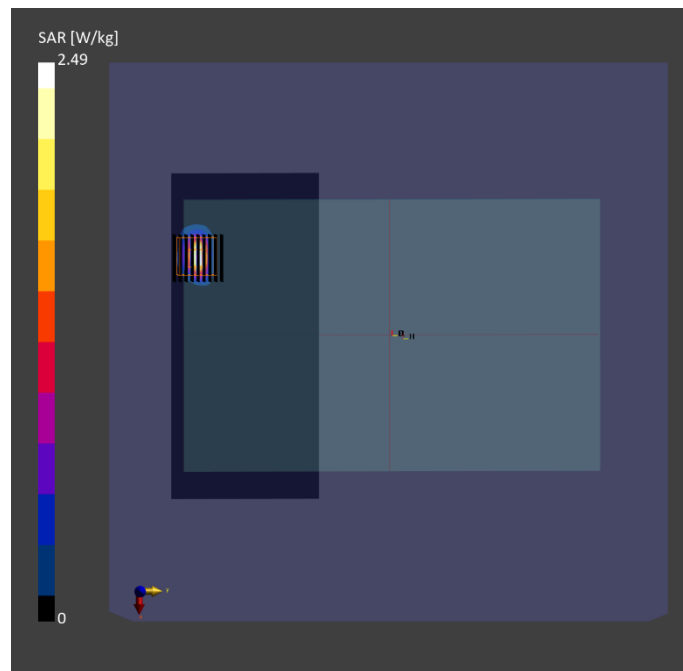
Phantom	Tissue Simulating Liquid	Probe Calibration Date	DAE Calibration Date
ELI V8.0 (20deg probe tilt) - 2141	HBBL-600-10000	EX3DV4 - SN7757 / 2023-08-22	DAE4 Sn1669 / 2023-05-23

Scan Setup

	Area Scan	Zoom Scan
Grid Extents [mm]	187.0 x 85.0	23.8 x 23.8 x 22.0
Grid Steps [mm]	8.5 x 8.5	3.4 x 3.4 x 1.4
Sensor Surface [mm]	3.0	1.4
Graded Grid	N/A	Yes
Grading Ratio	N/A	1.4

Measurement Results

	Area Scan	Zoom Scan
psSAR-1g [W/kg]	0.879	0.944
psSAR-10g [W/kg]	0.275	0.318
psAPD (1.0 cm ² , sq) [W/m ²]		8.44
psAPD (4.0 cm ² , sq) [W/m ²]		5.17
Power Drift [dB]		0.08
TSL Correction	Positive only	Positive only
M2 / M1 [%]		53.6
Dist 3dB Peak [mm]		4.6



Test Date : 2024-01-11 | Ambient Temp : 22.6 °C

Test Mode

47_UNII-5_802.11ax_HE160_Rear Face_0mm_Ch15_Ant 2

Device Under Test Properties

Manufacturer or Brand	Model No. or Code Name	Sample No. or IMEI	DUT Type
Getac	ZX80	A004	Tablet

Exposure Conditions

Phantom Section	Band	Group, UID	Frequency [MHz], Channel Number	Conversion Factor
5G	U-NII-5	WLAN, 10755 - AAC	6025.0, 15	1.0

Hardware Setup

Phantom	Medium	Probe Calibration Date	DAE Calibration Date
mmWave - 1102	Air	EUmmWV4 - SN9639_F1-55GHz / 2023-08-18	DAE4 Sn1743 / 2023-08-17

Scan Setup

	5G Scan
Grid Extents [mm]	100.0 x 100.0
Grid Steps [mm]	0.0502 x 0.0502
Sensor Surface [mm]	2.0

Measurement Results

	5G Scan
Avg. Area [cm ²]	4.00
psPD n+ [W/m ²]	2.59
psPD tot+ [W/m ²]	2.68
psPD mod+ [W/m ²]	3.03
E max [V/m]	47.1
Power Drift [dB]	-0.10

