

Appendix B - System Performance Check Plots

Test Date : 2024-01-04 | Ambient Temp : 22.4 °C | Tissue Temp : 21.9 °C

System Performance Check

System Performance Check_H750

Verification Source Properties

Manufacturer	Model No.	Serial No.	Input Power [dBm]
SPEAG	D750	1222	17.0

Exposure Conditions

Phantom Section	Group	Frequency [MHz]	Conversion Factor	TSL Conductivity [S/m]	TSL Permittivity
Flat	CW	750.000	9.1	0.898	42.4

Hardware Setup

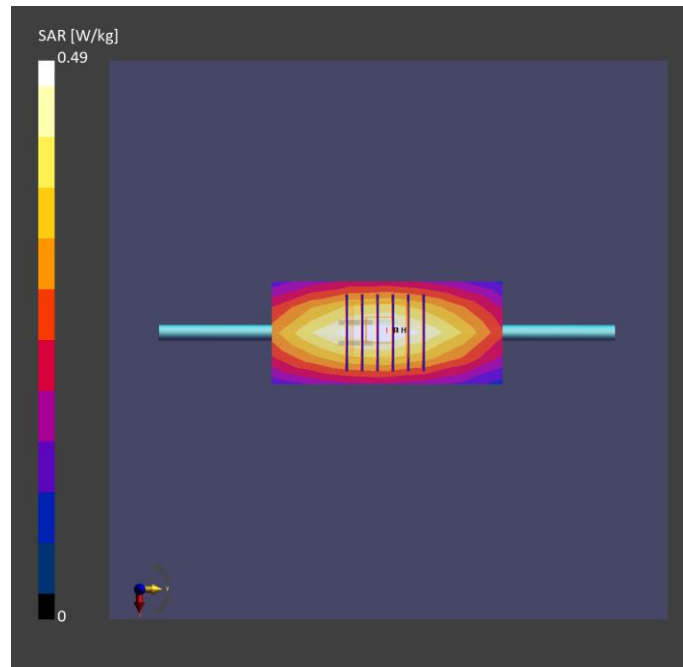
Phantom	Tissue Simulating Liquid	Probe Calibration Date	DAE Calibration Date
ELI V8.0 (20deg probe tilt) - 2141	HBBL-600-10000	EX3DV4 - SN7757 / 2023-08-22	DAE4 Sn1669 / 2023-05-23

Scan Setup

	Area Scan	Zoom Scan
Grid Extents [mm]	40.0 x 90.0	30.0 x 30.0 x 30.0
Grid Steps [mm]	10.0 x 15.0	6.0 x 6.0 x 1.5
Sensor Surface [mm]	3.0	1.4
Graded Grid	N/A	Yes
Grading Ratio	N/A	1.5

Measurement Results

	Area Scan	Zoom Scan
psSAR-1g [W/kg]	0.426	0.423
psSAR-10g [W/kg]	0.284	0.282
Power Drift [dB]		0.01
TSL Correction	Positive only	Positive only



Test Date : 2024-01-06 | Ambient Temp : 22.3 °C | Tissue Temp : 22.1 °C

System Performance Check

System Performance Check_H750

Verification Source Properties

Manufacturer	Model No.	Serial No.	Input Power [dBm]
SPEAG	D750	1222	17.0

Exposure Conditions

Phantom Section	Group	Frequency [MHz]	Conversion Factor	TSL Conductivity [S/m]	TSL Permittivity
Flat	CW	750.000	9.1	0.895	43.2

Hardware Setup

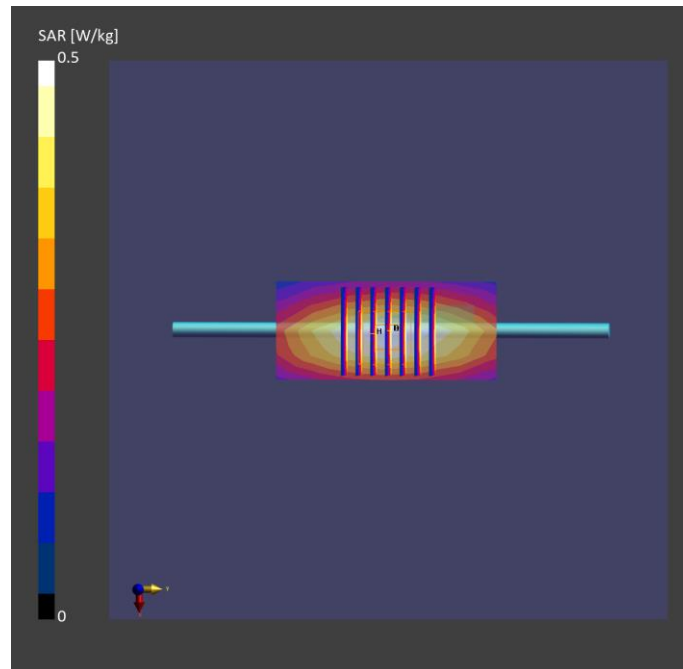
Phantom	Tissue Simulating Liquid	Probe Calibration Date	DAE Calibration Date
ELI V8.0 (20deg probe tilt) - 2141	HBBL-600-10000	EX3DV4 - SN7757 / 2023-08-22	DAE4 Sn1669 / 2023-05-23

Scan Setup

	Area Scan	Zoom Scan
Grid Extents [mm]	40.0 x 90.0	32.0 x 32.0 x 30.0
Grid Steps [mm]	10.0 x 15.0	6.0 x 6.0 x 1.5
Sensor Surface [mm]	3.0	1.4
Graded Grid	N/A	Yes
Grading Ratio	N/A	1.5

Measurement Results

	Area Scan	Zoom Scan
psSAR-1g [W/kg]	0.440	0.436
psSAR-10g [W/kg]	0.294	0.291
Power Drift [dB]		-0.02
Positive only	Positive only	Positive only



Test Date : 2024-01-03 | Ambient Temp : 22.4 °C | Tissue Temp : 22.0 °C

System Performance Check

System Performance Check_H835

Verification Source Properties

Manufacturer	Model No.	Serial No.	Input Power [dBm]
SPEAG	D835	4d291	17.0

Exposure Conditions

Phantom Section	Group	Frequency [MHz]	Conversion Factor	TSL Conductivity [S/m]	TSL Permittivity
Flat	CW	835.000	8.91	0.938	43.0

Hardware Setup

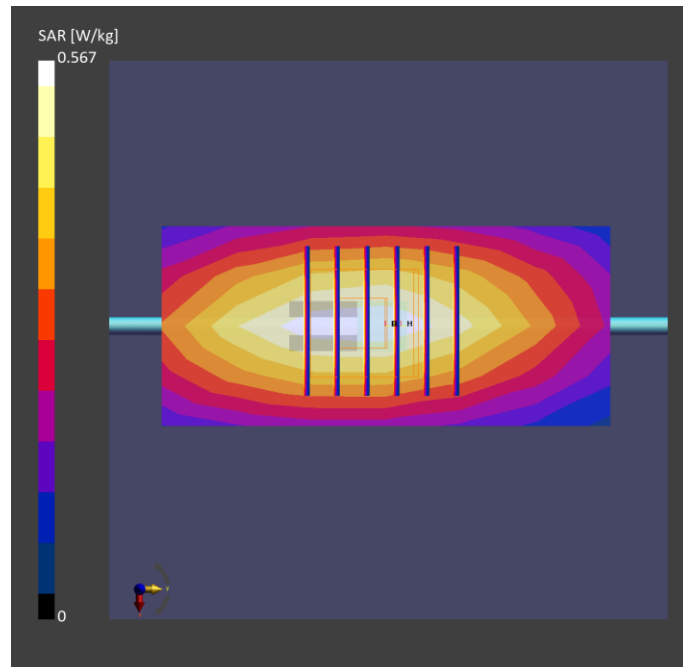
Phantom	Tissue Simulating Liquid	Probe Calibration Date	DAE Calibration Date
ELI V8.0 (20deg probe tilt) - 2141	HBBL-600-10000	EX3DV4 - SN7757 / 2023-08-22	DAE4 Sn1669 / 2023-05-23

Scan Setup

	Area Scan	Zoom Scan
Grid Extents [mm]	40.0 x 90.0	30.0 x 30.0 x 30.0
Grid Steps [mm]	10.0 x 15.0	6.0 x 6.0 x 1.5
Sensor Surface [mm]	3.0	1.4
Graded Grid	N/A	Yes
Grading Ratio	N/A	1.5

Measurement Results

	Area Scan	Zoom Scan
psSAR-1g [W/kg]	0.494	0.491
psSAR-10g [W/kg]	0.326	0.325
Power Drift [dB]		0.01
TSL Correction	Positive only	Positive only



Test Date : 2024-01-02 | Ambient Temp : 22.9 °C | Tissue Temp : 22.4 °C

System Performance Check

System Performance Check_H1800

Verification Source Properties

Manufacturer	Model No.	Serial No.	Input Power [dBm]
SPEAG	D1800	2d167	17.0

Exposure Conditions

Phantom Section	Group	Frequency [MHz]	Conversion Factor	TSL Conductivity [S/m]	TSL Permittivity
Flat	CW	1800.000	7.53	1.38	40.8

Hardware Setup

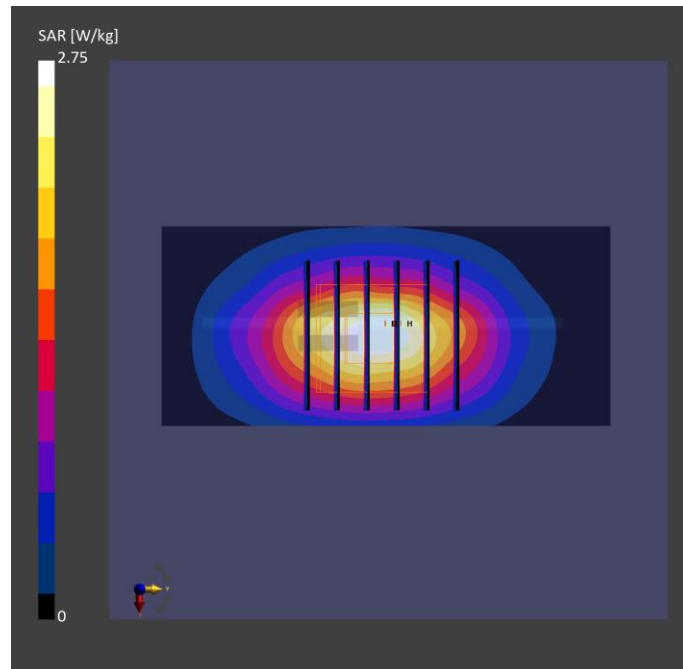
Phantom	Tissue Simulating Liquid	Probe Calibration Date	DAE Calibration Date
ELI V8.0 (20deg probe tilt) - 2141	HBBL-600-10000	EX3DV4 - SN7757 / 2023-08-22	DAE4 Sn1669 / 2023-05-23

Scan Setup

	Area Scan	Zoom Scan
Grid Extents [mm]	40.0 x 90.0	30.0 x 30.0 x 30.0
Grid Steps [mm]	10.0 x 15.0	6.0 x 6.0 x 1.5
Sensor Surface [mm]	3.0	1.4
Graded Grid	N/A	Yes
Grading Ratio	N/A	1.5

Measurement Results

	Area Scan	Zoom Scan
psSAR-1g [W/kg]	1.85	1.87
psSAR-10g [W/kg]	0.990	0.981
Power Drift [dB]		0.02
TSL Correction	Positive only	Positive only



Test Date : 2024-01-09 | Ambient Temp : 22.6 °C | Tissue Temp : 22.4 °C

System Performance Check

System Performance Check_H1800

Verification Source Properties

Manufacturer	Model No.	Serial No.	Input Power [dBm]
SPEAG	D1800	2d167	17.0

Exposure Conditions

Phantom Section	Group	Frequency [MHz]	Conversion Factor	TSL Conductivity [S/m]	TSL Permittivity
Flat	CW	1800.000	7.7	1.39	41.6

Hardware Setup

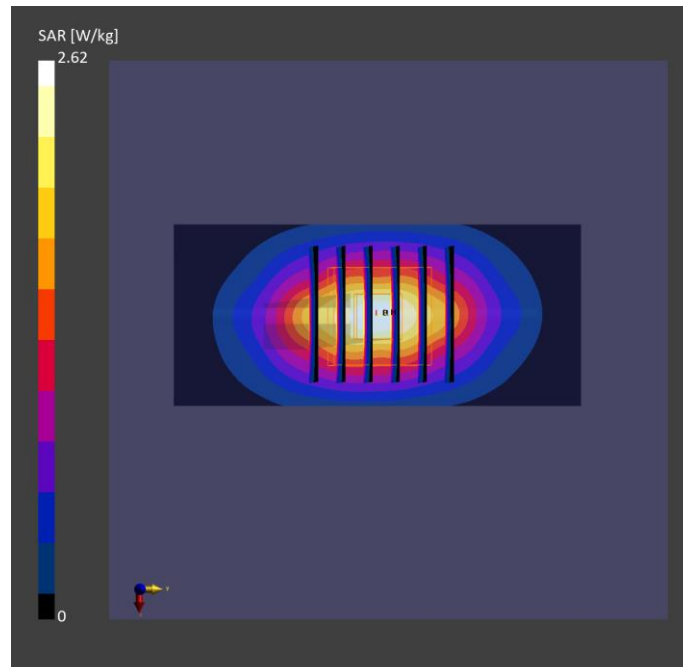
Phantom	Tissue Simulating Liquid	Probe Calibration Date	DAE Calibration Date
ELI V8.0 (20deg probe tilt) - 2179	HBBL-600-10000	EX3DV4 - SN7737 2023-06-05	DAE4 Sn1743 2023-08-17

Scan Setup

	Area Scan	Zoom Scan
Grid Extents [mm]	40.0 x 90.0	30.0 x 30.0 x 30.0
Grid Steps [mm]	10.0 x 15.0	6.0 x 6.0 x 1.5
Sensor Surface [mm]	3.0	1.4
Graded Grid	N/A	Yes
Grading Ratio	N/A	1.5

Measurement Results

	Area Scan	Zoom Scan
psSAR-1g [W/kg]	1.83	1.84
psSAR-10g [W/kg]	0.956	0.973
Power Drift [dB]		0.01
TSL Correction	Positive only	Positive only



Test Date : 2024-01-02 | Ambient Temp : 22.9 °C | Tissue Temp : 22.4 °C

System Performance Check

System Performance Check_H1900

Verification Source Properties

Manufacturer	Model No.	Serial No.	Input Power [dBm]
SPEAG	D1900	5d111	17.0

Exposure Conditions

Phantom Section	Group	Frequency [MHz]	Conversion Factor	TSL Conductivity [S/m]	TSL Permittivity
Flat	CW	1900.000	7.25	1.42	40.3

Hardware Setup

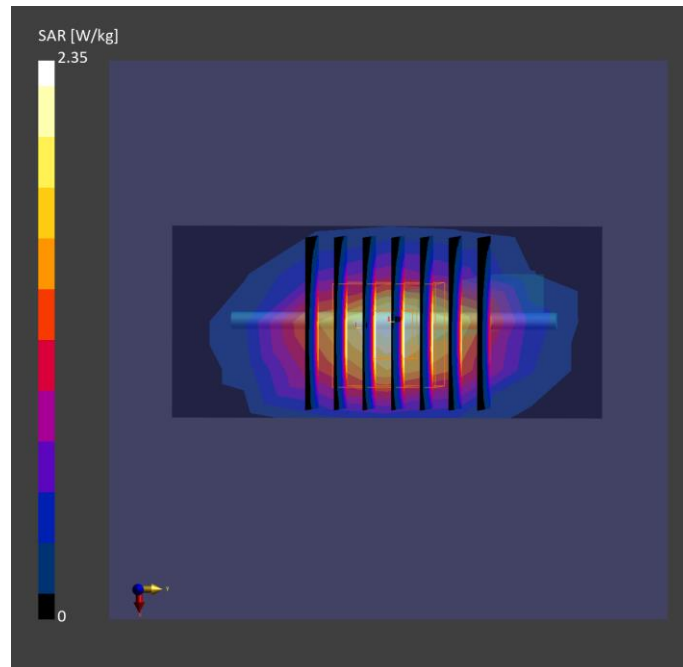
Phantom	Tissue Simulating Liquid	Probe Calibration Date	DAE Calibration Date
ELI V8.0 (20deg probe tilt) - 2141	HBBL-600-10000	EX3DV4 - SN7757 / 2023-08-22	DAE4 Sn1669 / 2023-05-23

Scan Setup

	Area Scan	Zoom Scan
Grid Extents [mm]	40.0 x 90.0	32.0 x 32.0 x 30.0
Grid Steps [mm]	10.0 x 15.0	6.0 x 6.0 x 1.5
Sensor Surface [mm]	3.0	1.4
Graded Grid	N/A	Yes
Grading Ratio	N/A	1.5

Measurement Results

	Area Scan	Zoom Scan
psSAR-1g [W/kg]	1.93	1.93
psSAR-10g [W/kg]	1.02	1.01
Power Drift [dB]		-0.02
TSL Correction	Positive only	Positive only



Test Date : 2024-01-09 | Ambient Temp : 22.6 °C | Tissue Temp : 22.4 °C

System Performance Check

System Performance Check_H1900

Verification Source Properties

Manufacturer	Model No.	Serial No.	Input Power [dBm]
SPEAG	D1900	5d111	17.0

Exposure Conditions

Phantom Section	Group	Frequency [MHz]	Conversion Factor	TSL Conductivity [S/m]	TSL Permittivity
Flat	CW	1900.000	7.25	1.45	41.4

Hardware Setup

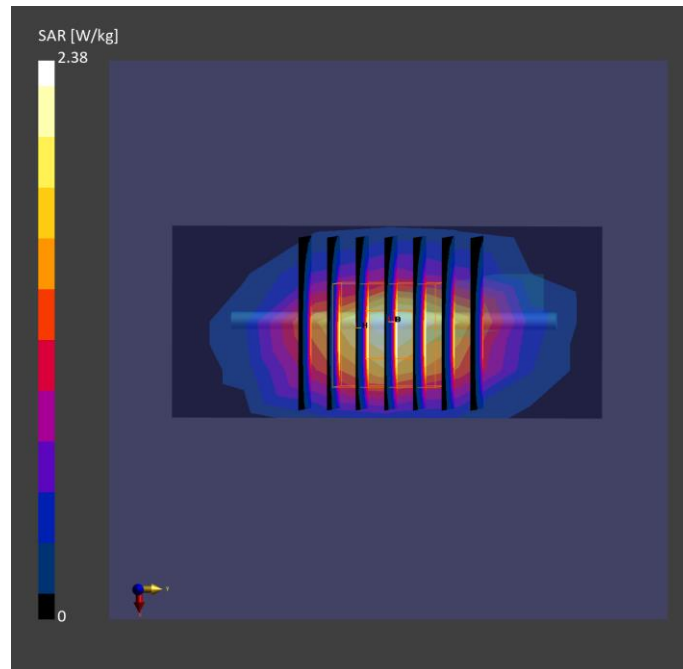
Phantom	Tissue Simulating Liquid	Probe Calibration Date	DAE Calibration Date
ELI V8.0 (20deg probe tilt) - 2179	HBBL-600-10000	EX3DV4 - SN7737 2023-06-05	DAE4 Sn1743 2023-08-17

Scan Setup

	Area Scan	Zoom Scan
Grid Extents [mm]	40.0 x 90.0	32.0 x 32.0 x 30.0
Grid Steps [mm]	10.0 x 15.0	6.0 x 6.0 x 1.5
Sensor Surface [mm]	3.0	1.4
Graded Grid	N/A	Yes
Grading Ratio	N/A	1.5

Measurement Results

	Area Scan	Zoom Scan
psSAR-1g [W/kg]	1.96	1.96
psSAR-10g [W/kg]	1.04	1.03
Power Drift [dB]		0.01
TSL Correction	Positive only	Positive only



Test Date : 2024-01-09 | Ambient Temp : 22.6 °C | Tissue Temp : 22.4 °C

System Performance Check

System Performance Check_H2300

Verification Source Properties

Manufacturer	Model No.	Serial No.	Input Power [dBm]
SPEAG	D2300	1005	17.0

Exposure Conditions

Phantom Section	Group	Frequency [MHz]	Conversion Factor	TSL Conductivity [S/m]	TSL Permittivity
Flat	CW	2300.000	7.32	1.70	40.9

Hardware Setup

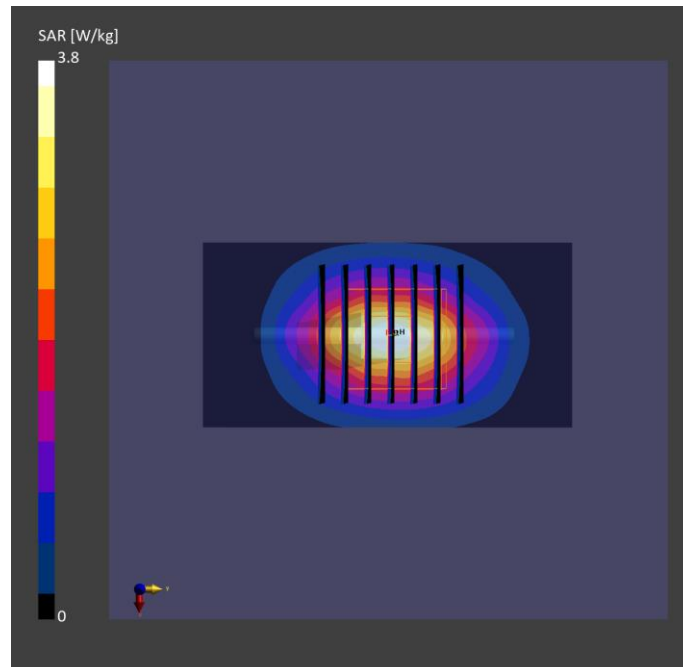
Phantom	Tissue Simulating Liquid	Probe Calibration Date	DAE Calibration Date
ELI V8.0 (20deg probe tilt) - 2179	HBBL-600-10000	EX3DV4 - SN7737 2023-06-05	DAE4 Sn1743 2023-08-17

Scan Setup

	Area Scan	Zoom Scan
Grid Extents [mm]	40.0 x 80.0	30.0 x 30.0 x 30.0
Grid Steps [mm]	10.0 x 10.0	5.0 x 5.0 x 1.5
Sensor Surface [mm]	3.0	1.4
Graded Grid	N/A	Yes
Grading Ratio	N/A	1.5

Measurement Results

	Area Scan	Zoom Scan
psSAR-1g [W/kg]	2.37	2.38
psSAR-10g [W/kg]	1.13	1.15
Power Drift [dB]		0.01
TSL Correction	Positive only	Positive only



Test Date : 2023-12-29 | Ambient Temp : 22.2 °C | Tissue Temp : 21.9 °C

System Performance Check

System Performance Check_H2450

Verification Source Properties

Manufacturer	Model No.	Serial No.	Input Power [dBm]
SPEAG	D2450	1087	17.0

Exposure Conditions

Phantom Section	Group	Frequency [MHz]	Conversion Factor	TSL Conductivity [S/m]	TSL Permittivity
Flat	CW	2450.000	7.05	1.81	40.1

Hardware Setup

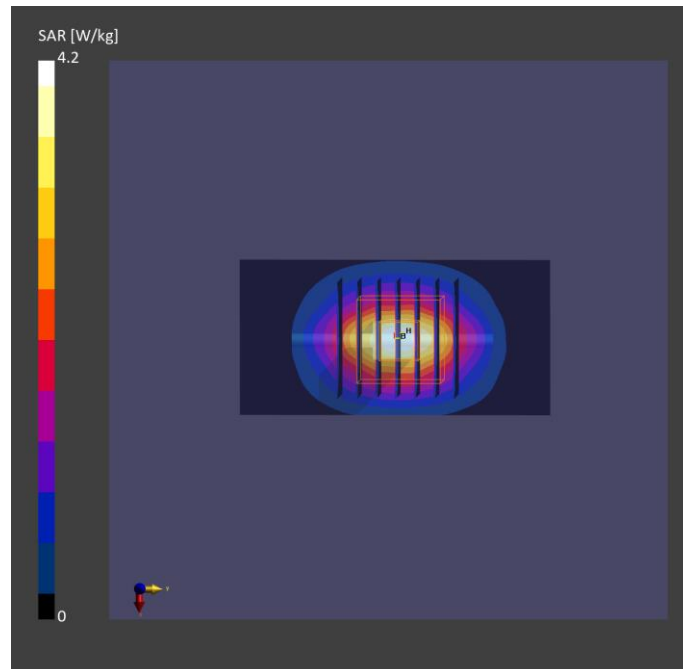
Phantom	Tissue Simulating Liquid	Probe Calibration Date	DAE Calibration Date
ELI V8.0 (20deg probe tilt) - 2141	HBBL-600-10000	EX3DV4 - SN7757 / 2023-08-22	DAE4 Sn1669 / 2023-05-23

Scan Setup

	Area Scan	Zoom Scan
Grid Extents [mm]	40.0 x 80.0	30.0 x 30.0 x 30.0
Grid Steps [mm]	10.0 x 10.0	5.0 x 5.0 x 1.5
Sensor Surface [mm]	3.0	1.4
Graded Grid	N/A	Yes
Grading Ratio	N/A	1.5

Measurement Results

	Area Scan	Zoom Scan
psSAR-1g [W/kg]	2.53	2.54
psSAR-10g [W/kg]	1.17	1.19
Power Drift [dB]		0.02
TSL Correction	Positive only	Positive only



Test Date : 2024-01-05 | Ambient Temp : 22.6 °C | Tissue Temp : 22.3 °C

System Performance Check

System Performance Check_H2600

Verification Source Properties

Manufacturer	Model No.	Serial No.	Input Power [dBm]
SPEAG	D2600	1197	17.0

Exposure Conditions

Phantom Section	Group	Frequency [MHz]	Conversion Factor	TSL Conductivity [S/m]	TSL Permittivity
Flat	CW	2600.000	6.95	1.91	39.2

Hardware Setup

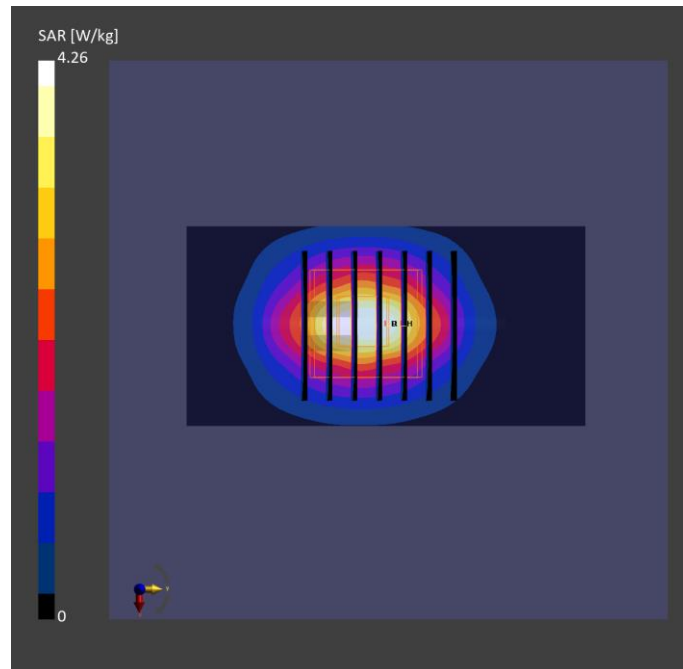
Phantom	Tissue Simulating Liquid	Probe Calibration Date	DAE Calibration Date
ELI V8.0 (20deg probe tilt) - 2141	HBBL-600-10000	EX3DV4 - SN7757 / 2023-08-22	DAE4 Sn1669 / 2023-05-23

Scan Setup

	Area Scan	Zoom Scan
Grid Extents [mm]	40.0 x 80.0	30.0 x 30.0 x 30.0
Grid Steps [mm]	10.0 x 10.0	5.0 x 5.0 x 1.5
Sensor Surface [mm]	3.0	1.4
Graded Grid	N/A	Yes
Grading Ratio	N/A	1.5

Measurement Results

	Area Scan	Zoom Scan
psSAR-1g [W/kg]	2.58	2.58
psSAR-10g [W/kg]	1.15	1.18
Power Drift [dB]		0.02
TSL Correction	Positive only	Positive only



Test Date : 2024-01-06 | Ambient Temp : 22.7 °C | Tissue Temp : 22.4 °C

System Performance Check

System Performance Check_H2600

Verification Source Properties

Manufacturer	Model No.	Serial No.	Input Power [dBm]
SPEAG	D2600	1197	17.0

Exposure Conditions

Phantom Section	Group	Frequency [MHz]	Conversion Factor	TSL Conductivity [S/m]	TSL Permittivity
Flat	CW	2600.000	7.17	1.96	40.9

Hardware Setup

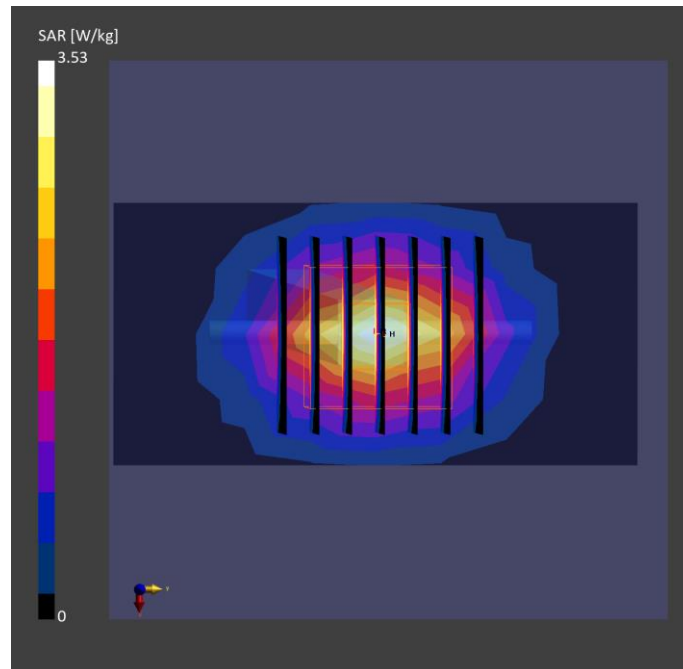
Phantom	Tissue Simulating Liquid	Probe Calibration Date	DAE Calibration Date
ELI V8.0 (20deg probe tilt) - 2179	HBBL-600-10000	EX3DV4 - SN7737 / 2023-06-05	DAE4 Sn1743 / 2023-08-17

Scan Setup

	Area Scan	Zoom Scan
Grid Extents [mm]	40.0 x 80.0	30.0 x 30.0 x 30.0
Grid Steps [mm]	10.0 x 10.0	5.0 x 5.0 x 1.5
Sensor Surface [mm]	3.0	1.4
Graded Grid	N/A	Yes
Grading Ratio	N/A	1.5

Measurement Results

	Area Scan	Zoom Scan
psSAR-1g [W/kg]	2.69	2.67
psSAR-10g [W/kg]	1.19	1.20
Power Drift [dB]		0.02
TSL Correction	Positive only	Positive only



Test Date : 2024-01-08 | Ambient Temp : 22.4 °C | Tissue Temp : 22.1 °C

System Performance Check

System Performance Check_H3500

Verification Source Properties

Manufacturer	Model No.	Serial No.	Input Power [dBm]
SPEAG	D3500	1013	17.0

Exposure Conditions

Phantom Section	Group	Frequency [MHz]	Conversion Factor	TSL Conductivity [S/m]	TSL Permittivity
Flat	CW	3500.000	6.87	2.74	38.9

Hardware Setup

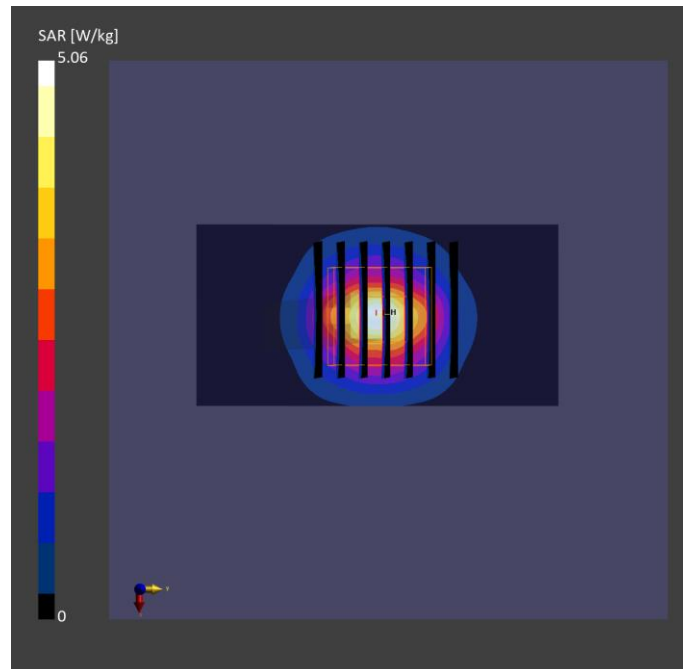
Phantom	Tissue Simulating Liquid	Probe Calibration Date	DAE Calibration Date
ELI V8.0 (20deg probe tilt) - 2179	HBBL-600-10000	EX3DV4 - SN7737 2023-06-05	DAE4 Sn1743 2023-08-17

Scan Setup

	Area Scan	Zoom Scan
Grid Extents [mm]	40.0 x 80.0	28.0 x 28.0 x 28.0
Grid Steps [mm]	10.0 x 10.0	5.0 x 5.0 x 1.4
Sensor Surface [mm]	3.0	1.4
Graded Grid	N/A	Yes
Grading Ratio	N/A	1.5

Measurement Results

	Area Scan	Zoom Scan
psSAR-1g [W/kg]	2.79	2.98
psSAR-10g [W/kg]	1.04	1.13
Power Drift [dB]		0.01
TSL Correction	Positive only	Positive only



Test Date : 2024-01-10 | Ambient Temp : 22.6 °C | Tissue Temp : 22.2 °C

System Performance Check

System Performance Check_H3500

Verification Source Properties

Manufacturer	Model No.	Serial No.	Input Power [dBm]
SPEAG	D3500	1013	17.0

Exposure Conditions

Phantom Section	Group	Frequency [MHz]	Conversion Factor	TSL Conductivity [S/m]	TSL Permittivity
Flat	CW	3500.000	6.87	2.77	39.8

Hardware Setup

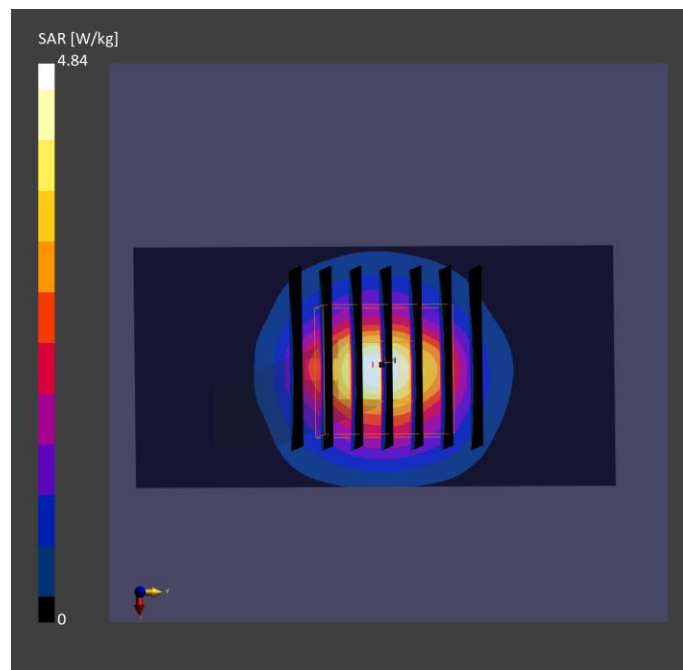
Phantom	Tissue Simulating Liquid	Probe Calibration Date	DAE Calibration Date
ELI V8.0 (20deg probe tilt) - 2179	HBBL-600-10000	EX3DV4 - SN7737 2023-06-05	DAE4 Sn1743 2023-08-17

Scan Setup

	Area Scan	Zoom Scan
Grid Extents [mm]	40.0 x 80.0	28.0 x 28.0 x 28.0
Grid Steps [mm]	10.0 x 10.0	5.0 x 5.0 x 1.4
Sensor Surface [mm]	3.0	1.4
Graded Grid	N/A	Yes
Grading Ratio	N/A	1.5

Measurement Results

	Area Scan	Zoom Scan
psSAR-1g [W/kg]	2.89	2.98
psSAR-10g [W/kg]	1.11	1.19
Power Drift [dB]		0.02
TSL Correction	Positive only	Positive only



Test Date : 2024-01-08 | Ambient Temp : 22.4 °C | Tissue Temp : 22.1 °C

System Performance Check

System Performance Check_H3700

Verification Source Properties

Manufacturer	Model No.	Serial No.	Input Power [dBm]
SPEAG	D3700	1034	17.0

Exposure Conditions

Phantom Section	Group	Frequency [MHz]	Conversion Factor	TSL Conductivity [S/m]	TSL Permittivity
Flat	CW	3700.000	6.8	2.92	38.6

Hardware Setup

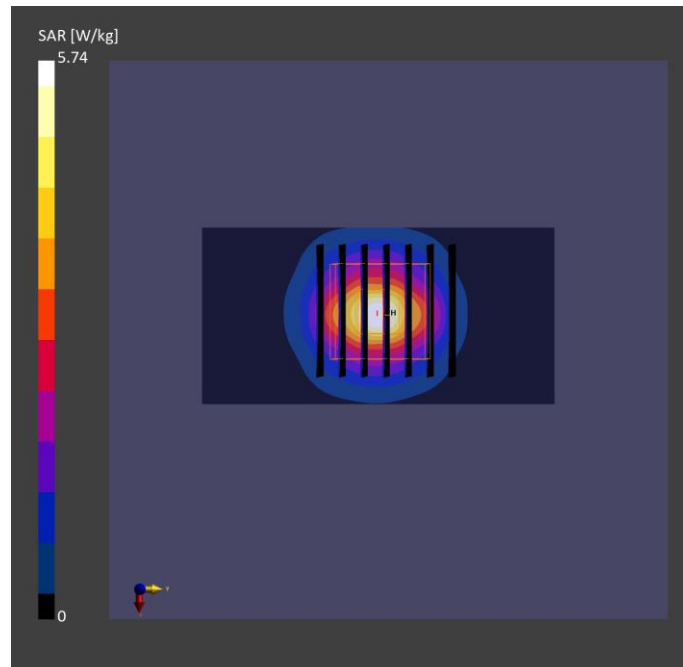
Phantom	Tissue Simulating Liquid	Probe Calibration Date	DAE Calibration Date
ELI V8.0 (20deg probe tilt) - 2179	HBBL-600-10000	EX3DV4 - SN7737 2023-06-05	DAE4 Sn1743 2023-08-17

Scan Setup

	Area Scan	Zoom Scan
Grid Extents [mm]	40.0 x 80.0	28.0 x 28.0 x 28.0
Grid Steps [mm]	10.0 x 10.0	5.0 x 5.0 x 1.4
Sensor Surface [mm]	3.0	1.4
Graded Grid	N/A	Yes
Grading Ratio	N/A	1.5

Measurement Results

	Area Scan	Zoom Scan
psSAR-1g [W/kg]	2.97	3.03
psSAR-10g [W/kg]	1.09	1.12
Power Drift [dB]		0.03
TSL Correction	Positive only	Positive only



Test Date : 2024-01-10 | Ambient Temp : 22.6 °C | Tissue Temp : 22.2 °C

System Performance Check

System Performance Check_H3700

Verification Source Properties

Manufacturer	Model No.	Serial No.	Input Power [dBm]
SPEAG	D3700	1034	17.0

Exposure Conditions

Phantom Section	Group	Frequency [MHz]	Conversion Factor	TSL Conductivity [S/m]	TSL Permittivity
Flat	CW	3700.000	6.8	2.96	39.5

Hardware Setup

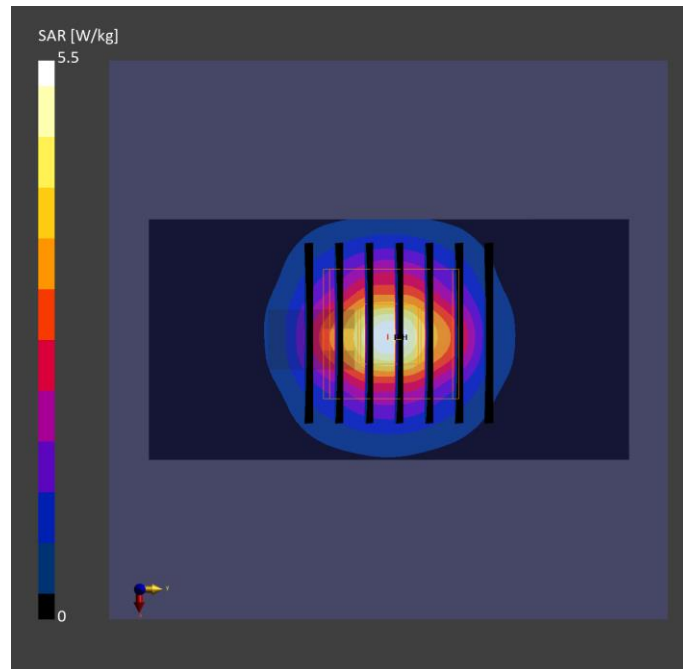
Phantom	Tissue Simulating Liquid	Probe Calibration Date	DAE Calibration Date
ELI V8.0 (20deg probe tilt) - 2179	HBBL-600-10000	EX3DV4 - SN7737 2023-06-05	DAE4 Sn1743 2023-08-17

Scan Setup

	Area Scan	Zoom Scan
Grid Extents [mm]	40.0 x 80.0	28.0 x 28.0 x 28.0
Grid Steps [mm]	10.0 x 10.0	5.0 x 5.0 x 1.4
Sensor Surface [mm]	3.0	1.4
Graded Grid	N/A	Yes
Grading Ratio	N/A	1.5

Measurement Results

	Area Scan	Zoom Scan
psSAR-1g [W/kg]	2.78	3.01
psSAR-10g [W/kg]	1.01	1.21
Power Drift [dB]		0.03
TSL Correction	Positive only	Positive only



Test Date : 2024-01-10 | Ambient Temp : 22.6 °C | Tissue Temp : 22.2 °C

System Performance Check

System Performance Check_H3900

Verification Source Properties

Manufacturer	Model No.	Serial No.	Input Power [dBm]
SPEAG	D3900	1014	17.0

Exposure Conditions

Phantom Section	Group	Frequency [MHz]	Conversion Factor	TSL Conductivity [S/m]	TSL Permittivity
Flat	CW	3900.000	6.77	3.16	39.2

Hardware Setup

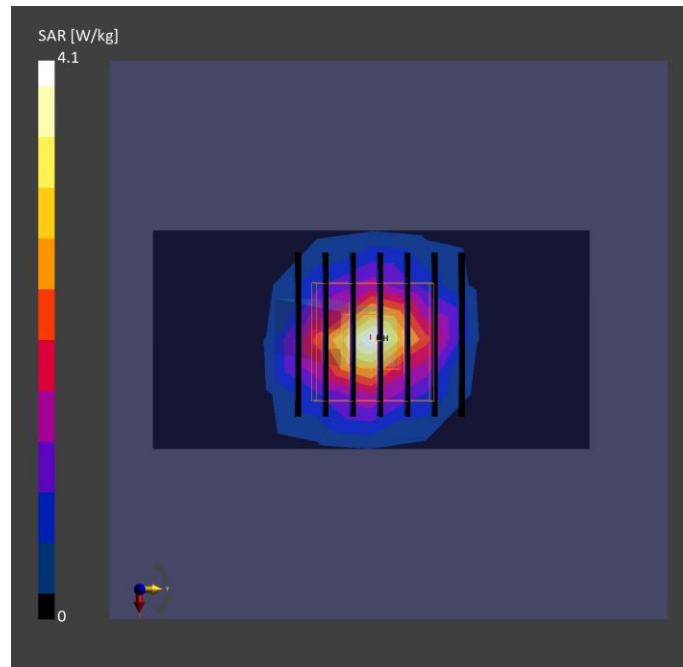
Phantom	Tissue Simulating Liquid	Probe Calibration Date	DAE Calibration Date
ELI V8.0 (20deg probe tilt) - 2179	HBBL-600-10000	EX3DV4 - SN7737 2023-06-05	DAE4 Sn1743 2023-08-17

Scan Setup

	Area Scan	Zoom Scan
Grid Extents [mm]	40.0 x 80.0	28.0 x 28.0 x 28.0
Grid Steps [mm]	10.0 x 10.0	5.0 x 5.0 x 1.4
Sensor Surface [mm]	3.0	1.4
Graded Grid	N/A	Yes
Grading Ratio	N/A	1.5

Measurement Results

	Area Scan	Zoom Scan
psSAR-1g [W/kg]	2.98	3.06
psSAR-10g [W/kg]	1.19	1.24
Power Drift [dB]		0.03
TSL Correction	Positive only	Positive only



Test Date : 2023-12-30 | Ambient Temp : 22.5 °C | Tissue Temp : 22.1 °C

System Performance Check

System Performance Check_H5250

Verification Source Properties

Manufacturer	Model No.	Serial No.	Input Power [dBm]
SPEAG	D5GHz	1358	17.0

Exposure Conditions

Phantom Section	Group	Frequency [MHz]	Conversion Factor	TSL Conductivity [S/m]	TSL Permittivity
Flat	CW	5250.000	5.02	4.6	35.8

Hardware Setup

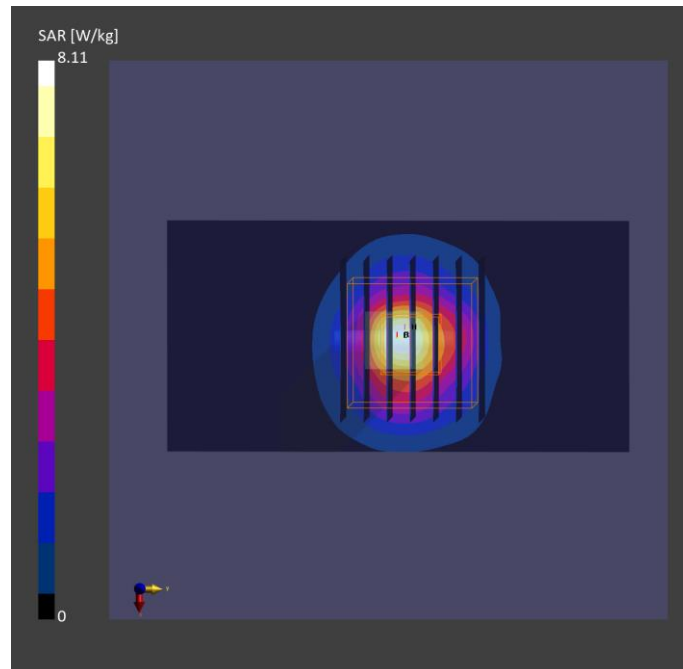
Phantom	Tissue Simulating Liquid	Probe Calibration Date	DAE Calibration Date
ELI V8.0 (20deg probe tilt) - 2141	HBBL-600-10000	EX3DV4 - SN7757 / 2023-08-22	DAE4 Sn1669 / 2023-05-23

Scan Setup

	Area Scan	Zoom Scan
Grid Extents [mm]	40.0 x 80.0	22.0 x 22.0 x 22.0
Grid Steps [mm]	10.0 x 10.0	4.0 x 4.0 x 1.4
Sensor Surface [mm]	3.0	1.4
Graded Grid	N/A	Yes
Grading Ratio	N/A	1.4

Measurement Results

	Area Scan	Zoom Scan
psSAR-1g [W/kg]	3.49	3.61
psSAR-10g [W/kg]	0.998	1.05
Power Drift [dB]		0.02
TSL Correction	Positive only	Positive only



Test Date : 2023-12-30 | Ambient Temp : 22.5 °C | Tissue Temp : 22.1 °C

System Performance Check

System Performance Check_H5600

Verification Source Properties

Manufacturer	Model No.	Serial No.	Input Power [dBm]
SPEAG	D5GHz	1358	17.0

Exposure Conditions

Phantom Section	Group	Frequency [MHz]	Conversion Factor	TSL Conductivity [S/m]	TSL Permittivity
Flat	CW	5600.000	4.29	4.99	35.2

Hardware Setup

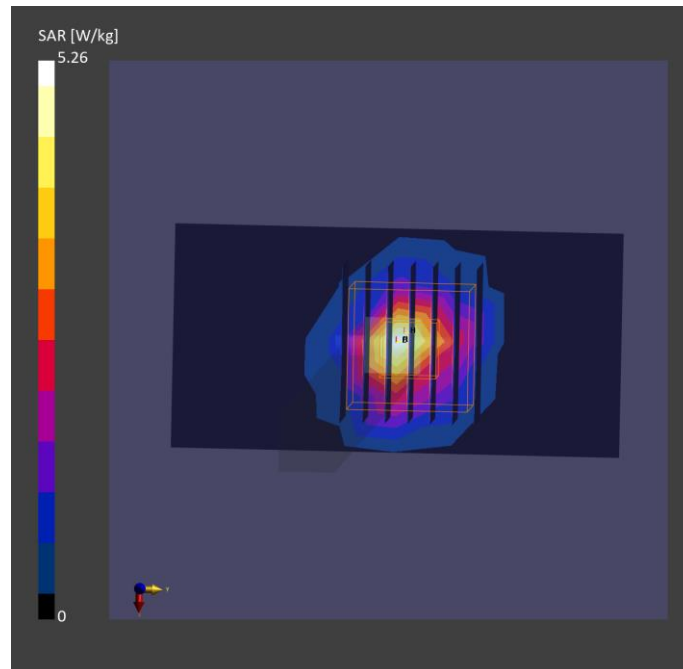
Phantom	Tissue Simulating Liquid	Probe Calibration Date	DAE Calibration Date
ELI V8.0 (20deg probe tilt) - 2141	HBBL-600-10000	EX3DV4 - SN7757 / 2023-08-22	DAE4 Sn1669 / 2023-05-23

Scan Setup

	Area Scan	Zoom Scan
Grid Extents [mm]	40.0 x 80.0	22.0 x 22.0 x 22.0
Grid Steps [mm]	10.0 x 10.0	4.0 x 4.0 x 1.4
Sensor Surface [mm]	3.0	1.4
Graded Grid	N/A	Yes
Grading Ratio	N/A	1.4

Measurement Results

	Area Scan	Zoom Scan
psSAR-1g [W/kg]	3.68	3.74
psSAR-10g [W/kg]	1.03	1.11
Power Drift [dB]		0.02
TSL Correction	Positive only	Positive only



Test Date : 2023-12-30 | Ambient Temp : 22.5 °C | Tissue Temp : 22.1 °C

System Performance Check

System Performance Check_H5800

Verification Source Properties

Manufacturer	Model No.	Serial No.	Input Power [dBm]
SPEAG	D5GHz	1358	17.0

Exposure Conditions

Phantom Section	Group	Frequency [MHz]	Conversion Factor	TSL Conductivity [S/m]	TSL Permittivity
Flat	CW	5800.000	4.36	5.22	34.8

Hardware Setup

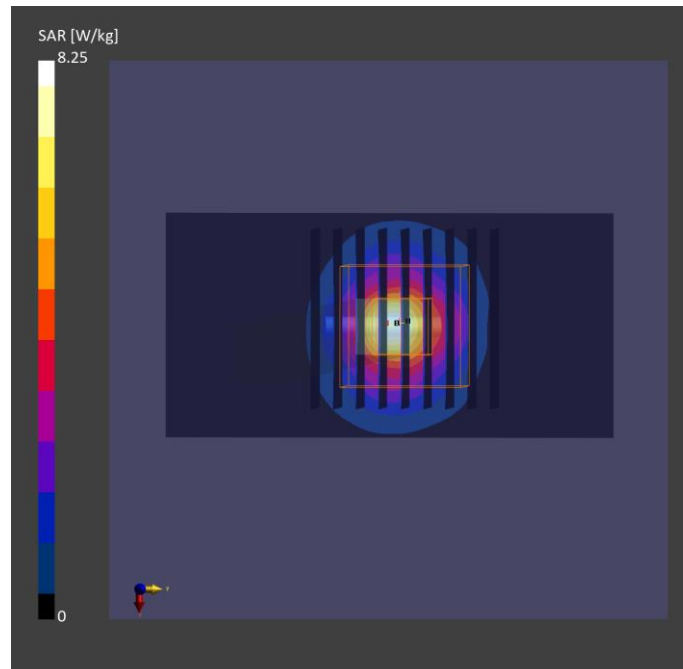
Phantom	Tissue Simulating Liquid	Probe Calibration Date	DAE Calibration Date
ELI V8.0 (20deg probe tilt) - 2141	HBBL-600-10000	EX3DV4 - SN7757 / 2023-08-22	DAE4 Sn1669 / 2023-05-23

Scan Setup

	Area Scan	Zoom Scan
Grid Extents [mm]	40.0 x 80.0	22.0 x 22.0 x 22.0
Grid Steps [mm]	10.0 x 10.0	4.0 x 4.0 x 1.4
Sensor Surface [mm]	3.0	1.4
Graded Grid	N/A	Yes
Grading Ratio	N/A	1.4

Measurement Results

	Area Scan	Zoom Scan
psSAR-1g [W/kg]	3.58	3.75
psSAR-10g [W/kg]	1.01	1.09
Power Drift [dB]		0.03
TSL Correction	Positive only	Positive only



Test Date : 2023-12-29 | Ambient Temp : 22.2 °C | Tissue Temp : 21.9 °C

System Performance Check

System Performance Check_H6500

Verification Source Properties

Manufacturer	Model No.	Serial No.	Input Power [dBm]
SPEAG	D6.5GHz	1081	20.0

Exposure Conditions

Phantom Section	Group	Frequency [MHz]	Conversion Factor	TSL Conductivity [S/m]	TSL Permittivity
Flat	CW	6500.000	4.47	6.01	33.9

Hardware Setup

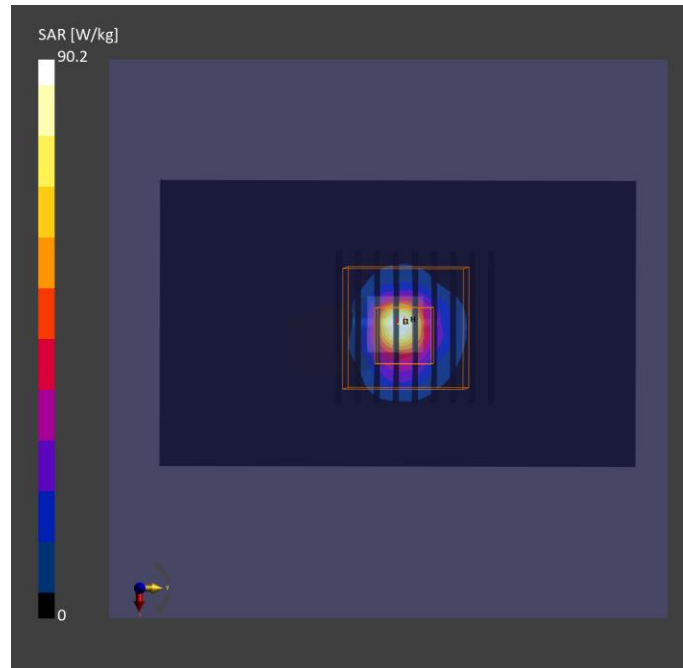
Phantom	Tissue Simulating Liquid	Probe Calibration Date	DAE Calibration Date
ELI V8.0 (20deg probe tilt) - 2141	HBBL-600-10000	EX3DV4 - SN7757 / 2023-08-22	DAE4 Sn1669 / 2023-05-23

Scan Setup

	Area Scan	Zoom Scan
Grid Extents [mm]	51.0 x 85.0	22.0 x 22.0 x 22.0
Grid Steps [mm]	8.5 x 8.5	3.4 x 3.4 x 1.4
Sensor Surface [mm]	3.0	1.4
Graded Grid	N/A	Yes
Grading Ratio	N/A	1.4

Measurement Results

	Area Scan	Zoom Scan
psSAR-1g [W/kg]	23.2	26.3
psSAR-8g [W/kg]	5.54	5.95
psSAR-10g [W/kg]	4.59	4.89
psAPD (1.0 cm ² , sq) [W/m ²]		261
psAPD (4.0 cm ² , sq) [W/m ²]		119
Power Drift [dB]		0.01
TSL Correction	Positive only	Positive only



Test Date : 2024-01-11 | Ambient Temp : 22.6 °C

System Performance Check

System Performance Check_10GHz

Verification Source Properties

Manufacturer	Model No.	Serial No.
SPEAG	Device	1060

Exposure Conditions

Phantom Section	Group	Frequency [MHz]	Conversion Factor
5G	CW	10000.0	1.0

Hardware Setup

Phantom	Medium	Probe Calibration Date	DAE Calibration Date
mmWave - 1102	Air	EUmmWV4 - SN9639_F1-55GHz / 2023-08-18	DAE4 Sn1743 / 2023-08-17

Scan Setup

	5G Scan
Grid Extents [mm]	60.0 x 60.0
Grid Steps [mm]	0.125 x 0.125
Sensor Surface [mm]	2.0

Measurement Results

	5G Scan
Avg. Area [cm ²]	4.00
psPD n+ [W/m ²]	55.3
psPD tot+ [W/m ²]	52.7
psPD mod+ [W/m ²]	53.2
E max [V/m]	150
Power Drift [dB]	0.11

