

## Appendix B - System Performance Check Plots

### System Performance Check\_H750Hz\_230629 Summary

Dipole	Frequency [MHz]
D750V3 - SN1222	750.0

HSL

### Exposure Conditions

Phantom Section, TSL	Test Distance [mm]	Band	Group, UID	Frequency [MHz], Channel Number	Conversion Factor	TSL Conductivity [S/m]	TSL Permittivity
Flat, HSL	15		CW, 0--	750.000, 0	9.22	0.916	42.1

### Hardware Setup

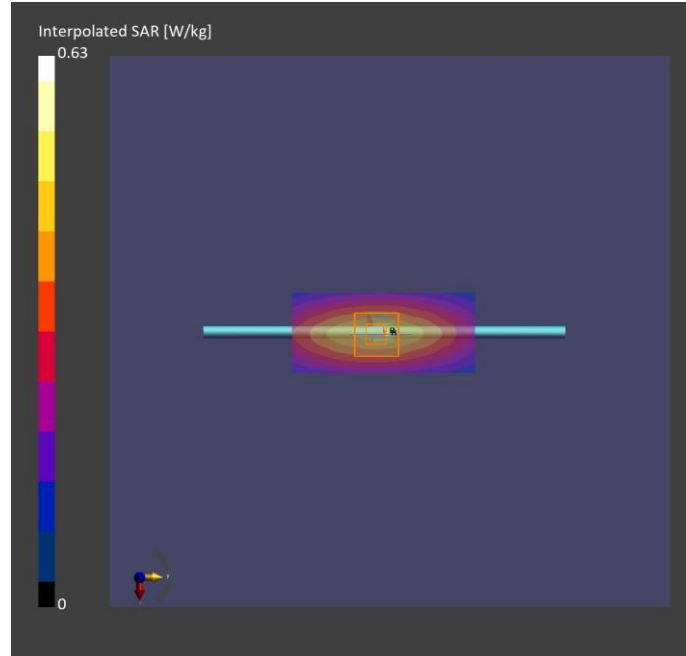
Phantom	TSL, Measured Date	Probe, Calibration Date	DAE, Calibration Date
ELI V8.0 (20deg probe tilt) - 2176	HBBL-600-10000 , 2023-Jun-29	EX3DV4 - SN7737, 2023-06-05	DAE4 Sn1742, 2022-08-31

### Scan Setup

	Area Scan	Zoom Scan
Grid Extents [mm]	40.0 x 90.0	30.0 x 30.0 x 30.0
Grid Steps [mm]	10.0 x 15.0	6.0 x 6.0 x 1.5
Sensor Surface [mm]	3.0	1.4

### Measurement Results

	Area Scan	Zoom Scan
Date	2023-06-29	2023-06-29
psSAR1g [W/Kg]	0.428	0.428
psSAR10g [W/Kg]	0.286	0.284
Power Drift [dB]	0.01	0.04
TSL Correction	Positive only	Positive only
M2/M1 [%]		88.9
Dist 3dB Peak [mm]		> 15.0



### System Performance Check\_H835Hz\_230629 Summary

Dipole	Frequency [MHz]
D835V2 - SN4d291 HSL	835.0

### Exposure Conditions

Phantom Section, TSL	Test Distance [mm]	Band	Group, UID	Frequency [MHz], Channel Number	Conversion Factor	TSL Conductivity [S/m]	TSL Permittivity
Flat, HSL	15		CW, 0--	835.000, 0	9.12	0.947	41.8

### Hardware Setup

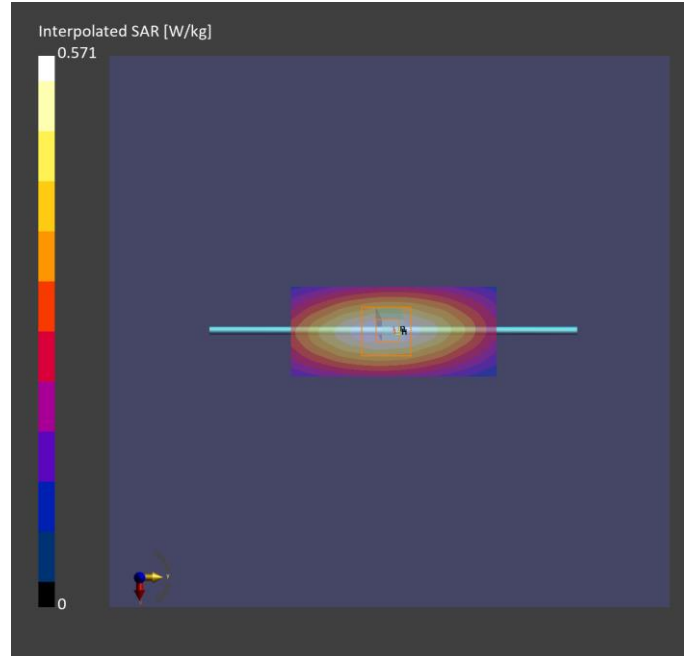
Phantom	TSL, Measured Date	Probe, Calibration Date	DAE, Calibration Date
ELI V8.0 (20deg probe tilt) - 2176	HBBL-600-10000 , 2023-Jun-29	EX3DV4 - SN7737, 2023-06-05	DAE4 Sn1742, 2022-08-31

### Scan Setup

	Area Scan	Zoom Scan
Grid Extents [mm]	40.0 x 90.0	30.0 x 30.0 x 30.0
Grid Steps [mm]	10.0 x 15.0	6.0 x 6.0 x 1.5
Sensor Surface [mm]	3.0	1.4

### Measurement Results

	Area Scan	Zoom Scan
Date	2023-06-29	2023-06-29
psSAR1g [W/Kg]	0.494	0.495
psSAR10g [W/Kg]	0.325	0.326
Power Drift [dB]	0.03	0.03
TSL Correction	Positive only	Positive only
M2/M1 [%]		88.6
Dist 3dB Peak [mm]		19.0



### System Performance Check\_H835Hz\_230630 Summary

Dipole	Frequency [MHz]
D835V2 - SN4d291 HSL	835.0

### Exposure Conditions

Phantom Section, TSL	Test Distance [mm]	Band	Group, UID	Frequency [MHz], Channel Number	Conversion Factor	TSL Conductivity [S/m]	TSL Permittivity
Flat, HSL	15		CW, 0--	835.000, 0	9.12	0.932	43.8

### Hardware Setup

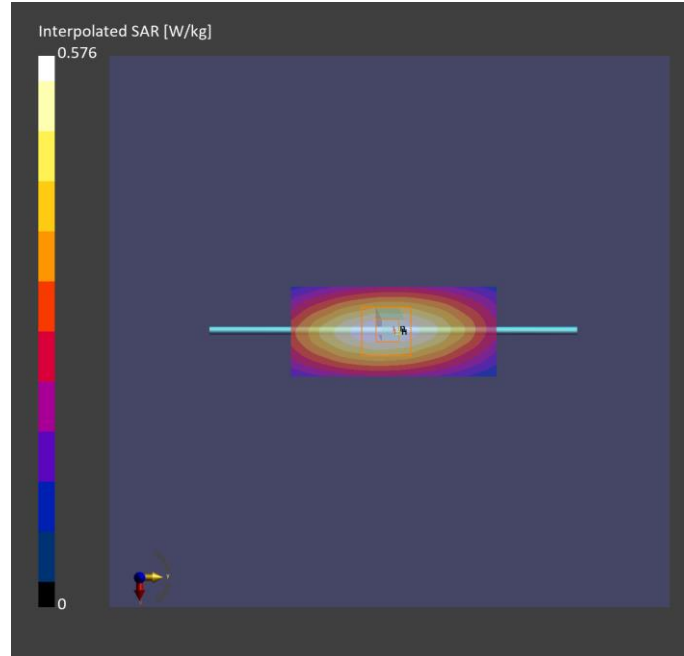
Phantom	TSL, Measured Date	Probe, Calibration Date	DAE, Calibration Date
ELI V8.0 (20deg probe tilt) - 2176	HBBL-600-10000 , 2023-Jun-30	EX3DV4 - SN7737, 2023-06-05	DAE4 Sn1742, 2022-08-31

### Scan Setup

	Area Scan	Zoom Scan
Grid Extents [mm]	40.0 x 90.0	30.0 x 30.0 x 30.0
Grid Steps [mm]	10.0 x 15.0	6.0 x 6.0 x 1.5
Sensor Surface [mm]	3.0	1.4

### Measurement Results

	Area Scan	Zoom Scan
Date	2023-06-30	2023-06-30
psSAR1g [W/Kg]	0.498	0.496
psSAR10g [W/Kg]	0.328	0.326
Power Drift [dB]	0.01	0.01
TSL Correction	Positive only	Positive only
M2/M1 [%]		89.1
Dist 3dB Peak [mm]		19.7



### System Performance Check\_H1800Hz\_230629 Summary

Dipole	Frequency [MHz]
D1800V2 - SN2d167	1800.0

HSL

### Exposure Conditions

Phantom Section, TSL	Test Distance [mm]	Band	Group, UID	Frequency [MHz], Channel Number	Conversion Factor	TSL Conductivity [S/m]	TSL Permittivity
Flat, HSL	10		CW, 0--	1800.000, 0	8.03	1.39	42.0

### Hardware Setup

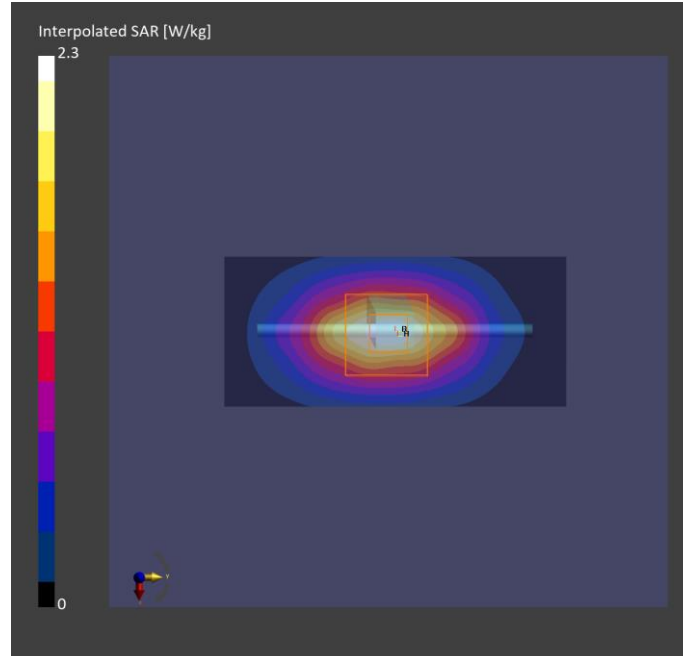
Phantom	TSL, Measured Date	Probe, Calibration Date	DAE, Calibration Date
ELI V8.0 (20deg probe tilt) - 2176	HBBL-600-10000 , 2023-Jun-29	EX3DV4 - SN7737, 2023-06-05	DAE4 Sn1742, 2022-08-31

### Scan Setup

	Area Scan	Zoom Scan
Grid Extents [mm]	40.0 x 90.0	30.0 x 30.0 x 30.0
Grid Steps [mm]	10.0 x 15.0	6.0 x 6.0 x 1.5
Sensor Surface [mm]	3.0	1.4

### Measurement Results

	Area Scan	Zoom Scan
Date	2023-06-29	2023-06-29
psSAR1g [W/Kg]	1.87	1.87
psSAR10g [W/Kg]	0.978	0.983
Power Drift [dB]	0.01	-0.01
TSL Correction	Positive only	Positive only
M2/M1 [%]		82.8
Dist 3dB Peak [mm]		10.8



### System Performance Check\_H1800Hz\_230630 Summary

Dipole	Frequency [MHz]
D1800V2 - SN2d167 HSL	1800.0

### Exposure Conditions

Phantom Section, TSL	Test Distance [mm]	Band	Group, UID	Frequency [MHz], Channel Number	Conversion Factor	TSL Conductivity [S/m]	TSL Permittivity
Flat, HSL	10		CW, 0--	1800.000, 0	8.03	1.39	42.0

### Hardware Setup

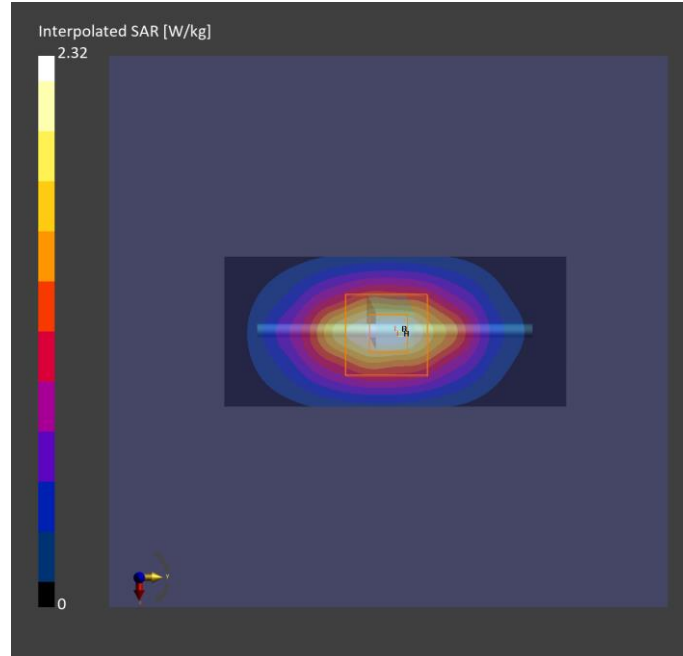
Phantom	TSL, Measured Date	Probe, Calibration Date	DAE, Calibration Date
ELI V8.0 (20deg probe tilt) - 2176	HBBL-600-10000 , 2023-Jun-30	EX3DV4 - SN7737, 2023-06-05	DAE4 Sn1742, 2022-08-31

### Scan Setup

	Area Scan	Zoom Scan
Grid Extents [mm]	40.0 x 90.0	30.0 x 30.0 x 30.0
Grid Steps [mm]	10.0 x 15.0	6.0 x 6.0 x 1.5
Sensor Surface [mm]	3.0	1.4

### Measurement Results

	Area Scan	Zoom Scan
Date	2023-06-30	2023-06-30
psSAR1g [W/Kg]	1.88	1.87
psSAR10g [W/Kg]	0.985	0.984
Power Drift [dB]	-0.00	-0.01
TSL Correction	Positive only	Positive only
M2/M1 [%]		83.0
Dist 3dB Peak [mm]		10.8



### System Performance Check\_H2000Hz\_230629 Summary

Dipole	Frequency [MHz]
D2000V2 - SN1008	2000.0

HSL

### Exposure Conditions

Phantom Section, TSL	Test Distance [mm]	Band	Group, UID	Frequency [MHz], Channel Number	Conversion Factor	TSL Conductivity [S/m]	TSL Permittivity
Flat, HSL	10		CW, 0--	2000.000, 0	7.7	1.51	41.8

### Hardware Setup

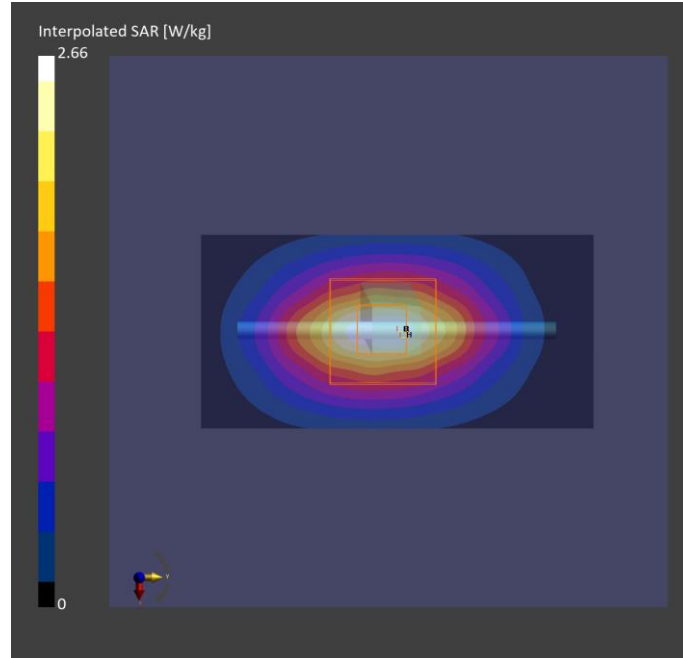
Phantom	TSL, Measured Date	Probe, Calibration Date	DAE, Calibration Date
ELI V8.0 (20deg probe tilt) - 2176	HBBL-600-10000 , 2023-Jun-29	EX3DV4 - SN7737, 2023-06-05	DAE4 Sn1742, 2022-08-31

### Scan Setup

	Area Scan	Zoom Scan
Grid Extents [mm]	40.0 x 80.0	30.0 x 30.0 x 30.0
Grid Steps [mm]	10.0 x 10.0	5.0 x 5.0 x 1.5
Sensor Surface [mm]	3.0	1.4

### Measurement Results

	Area Scan	Zoom Scan
Date	2023-06-29	2023-06-29
psSAR1g [W/Kg]	2.10	2.09
psSAR10g [W/Kg]	1.07	1.07
Power Drift [dB]	0.01	0.00
TSL Correction	Positive only	Positive only
M2/M1 [%]		82.3
Dist 3dB Peak [mm]		10.0



**System Performance Check\_H2000Hz\_230630 Summary**

Dipole	Frequency [MHz]
D2000V2 - SN1008 HSL	2000.0

**Exposure Conditions**

Phantom Section, TSL	Test Distance [mm]	Band	Group, UID	Frequency [MHz], Channel Number	Conversion Factor	TSL Conductivity [S/m]	TSL Permittivity
Flat, HSL	10		CW, 0--	2000.000, 0	7.7	1.51	41.8

**Hardware Setup**

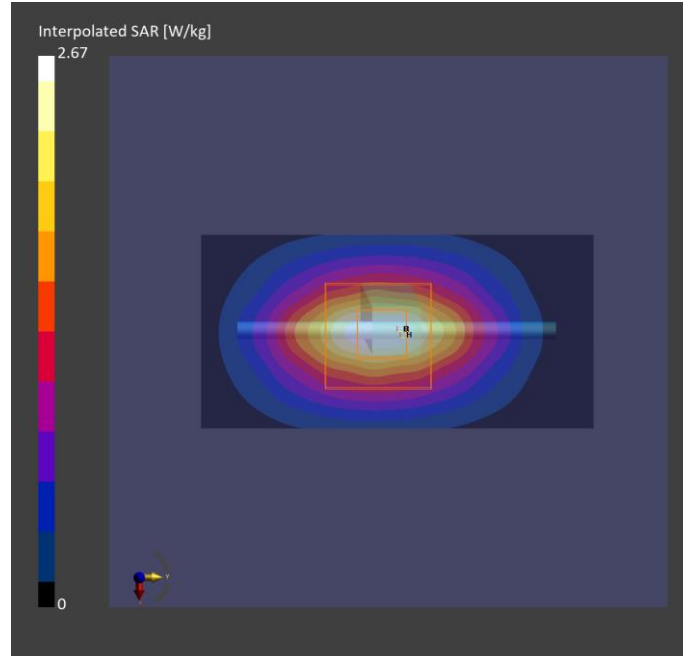
Phantom	TSL, Measured Date	Probe, Calibration Date	DAE, Calibration Date
ELI V8.0 (20deg probe tilt) - 2176	HBBL-600-10000 , 2023-Jun-30	EX3DV4 - SN7737, 2023-06-05	DAE4 Sn1742, 2022-08-31

**Scan Setup**

	Area Scan	Zoom Scan
Grid Extents [mm]	40.0 x 80.0	30.0 x 30.0 x 30.0
Grid Steps [mm]	10.0 x 10.0	5.0 x 5.0 x 1.5
Sensor Surface [mm]	3.0	1.4

**Measurement Results**

	Area Scan	Zoom Scan
Date	2023-06-30	2023-06-30
psSAR1g [W/Kg]	2.11	2.09
psSAR10g [W/Kg]	1.07	1.07
Power Drift [dB]	0.01	-0.00
TSL Correction	Positive only	Positive only
M2/M1 [%]		82.0
Dist 3dB Peak [mm]		10.0





### System Performance Check\_H2450Hz\_230704 Summary

Dipole	Frequency [MHz]
D2450V2 - SN1087 HSL	2450.0

### Exposure Conditions

Phantom Section, TSL	Test Distance [mm]	Band	Group, UID	Frequency [MHz], Channel Number	Conversion Factor	TSL Conductivity [S/m]	TSL Permittivity
Flat, HSL	10		CW, 0--	2450.000, 0	7.25	1.86	41.4

### Hardware Setup

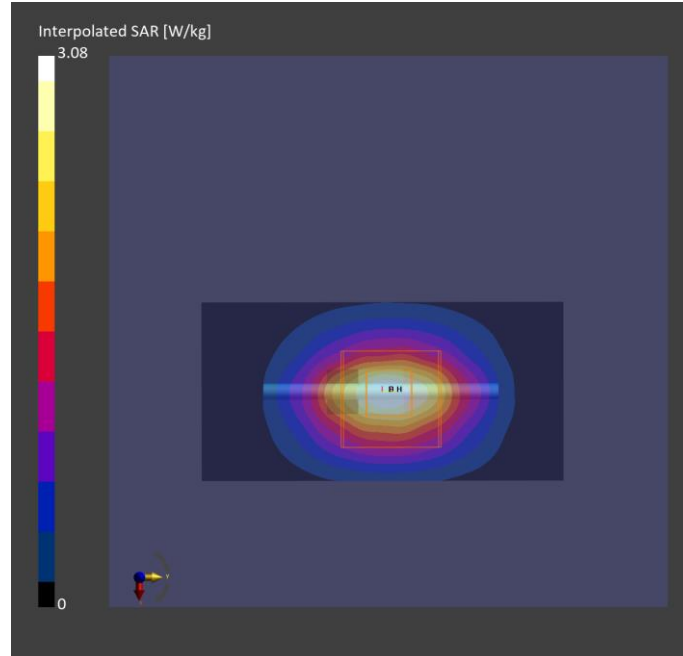
Phantom	TSL, Measured Date	Probe, Calibration Date	DAE, Calibration Date
ELI V8.0 (20deg probe tilt) - 2180	HBBL-600-10000 , 2023-Jul-04	EX3DV4 - SN7757, 2022-09-02	DAE4 Sn1743, 2022-08-25

### Scan Setup

	Area Scan	Zoom Scan
Grid Extents [mm]	40.0 x 80.0	30.0 x 30.0 x 30.0
Grid Steps [mm]	10.0 x 10.0	5.0 x 5.0 x 1.5
Sensor Surface [mm]	3.0	1.4

### Measurement Results

	Area Scan	Zoom Scan
Date	2023-07-04	2023-07-04
psSAR1g [W/Kg]	2.34	2.41
psSAR10g [W/Kg]	1.09	1.13
Power Drift [dB]	0.01	0.01
TSL Correction	Positive only	Positive only
M2/M1 [%]		78.6
Dist 3dB Peak [mm]		9.0



**System Performance Check\_H2450Hz\_230707 Summary**

Dipole	Frequency [MHz]
D2450V2 - SN1087 HSL	2450.0

**Exposure Conditions**

Phantom Section, TSL	Test Distance [mm]	Band	Group, UID	Frequency [MHz], Channel Number	Conversion Factor	TSL Conductivity [S/m]	TSL Permittivity
Flat, HSL	10		CW, 0--	2450.000, 0	7.25	1.86	41.4

**Hardware Setup**

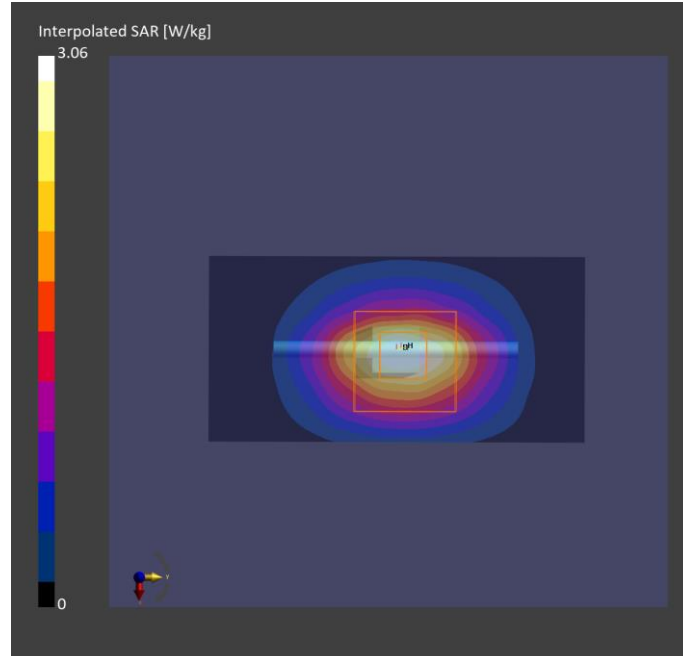
Phantom	TSL, Measured Date	Probe, Calibration Date	DAE, Calibration Date
ELI V8.0 (20deg probe tilt) - 2180	HBBL-600-10000 , 2023-Jul-07	EX3DV4 - SN7757, 2022-09-02	DAE4 Sn1743, 2022-08-25

**Scan Setup**

	Area Scan	Zoom Scan
Grid Extents [mm]	40.0 x 80.0	30.0 x 30.0 x 30.0
Grid Steps [mm]	10.0 x 10.0	5.0 x 5.0 x 1.5
Sensor Surface [mm]	3.0	1.4

**Measurement Results**

	Area Scan	Zoom Scan
Date	2023-07-07	2023-07-07
psSAR1g [W/Kg]	2.34	2.40
psSAR10g [W/Kg]	1.10	1.14
Power Drift [dB]	0.00	0.01
TSL Correction	Positive only	Positive only
M2/M1 [%]		78.4
Dist 3dB Peak [mm]		9.0



**System Performance Check\_H2600Hz\_230629 Summary**

Dipole	Frequency [MHz]
D2600V2 - SN1197 HSL	2600.0

**Exposure Conditions**

Phantom Section, TSL	Test Distance [mm]	Band	Group, UID	Frequency [MHz], Channel Number	Conversion Factor	TSL Conductivity [S/m]	TSL Permittivity
Flat, HSL	10		CW, 0--	2600.000, 0	7.17	1.96	41.0

**Hardware Setup**

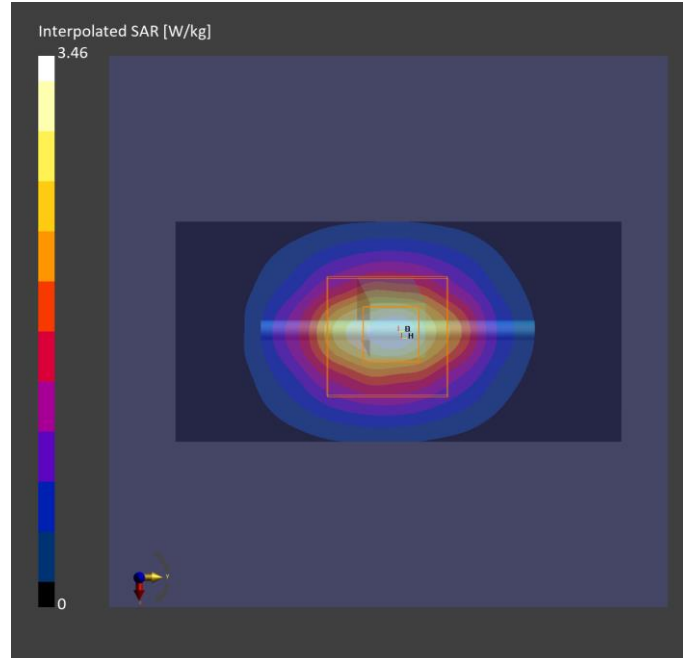
Phantom	TSL, Measured Date	Probe, Calibration Date	DAE, Calibration Date
ELI V8.0 (20deg probe tilt) - 2176	HBBL-600-10000 , 2023-Jun-29	EX3DV4 - SN7737, 2023-06-05	DAE4 Sn1742, 2022-08-31

**Scan Setup**

	Area Scan	Zoom Scan
Grid Extents [mm]	40.0 x 80.0	30.0 x 30.0 x 30.0
Grid Steps [mm]	10.0 x 10.0	5.0 x 5.0 x 1.5
Sensor Surface [mm]	3.0	1.4

**Measurement Results**

	Area Scan	Zoom Scan
Date	2023-06-29	2023-06-29
psSAR1g [W/Kg]	2.62	2.63
psSAR10g [W/Kg]	1.16	1.18
Power Drift [dB]	-0.01	0.05
TSL Correction	Positive only	Positive only
M2/M1 [%]		79.5
Dist 3dB Peak [mm]		9.0



**System Performance Check\_H2600Hz\_230630 Summary**

Dipole	Frequency [MHz]
D2600V2 - SN1197 HSL	2600.0

**Exposure Conditions**

Phantom Section, TSL	Test Distance [mm]	Band	Group, UID	Frequency [MHz], Channel Number	Conversion Factor	TSL Conductivity [S/m]	TSL Permittivity
Flat, HSL	10		CW, 0--	2600.000, 0	7.17	1.96	41.0

**Hardware Setup**

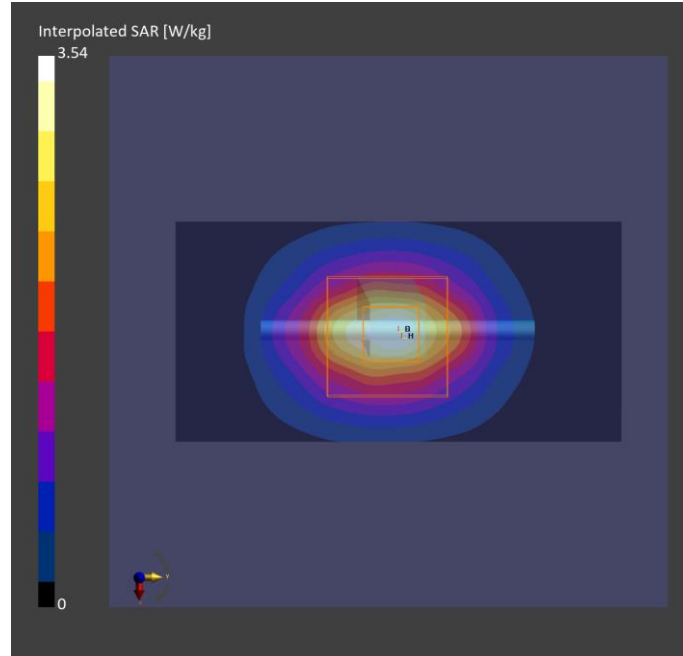
Phantom	TSL, Measured Date	Probe, Calibration Date	DAE, Calibration Date
ELI V8.0 (20deg probe tilt) - 2176	HBBL-600-10000 , 2023-Jun-30	EX3DV4 - SN7737, 2023-06-05	DAE4 Sn1742, 2022-08-31

**Scan Setup**

	Area Scan	Zoom Scan
Grid Extents [mm]	40.0 x 80.0	30.0 x 30.0 x 30.0
Grid Steps [mm]	10.0 x 10.0	5.0 x 5.0 x 1.5
Sensor Surface [mm]	3.0	1.4

**Measurement Results**

	Area Scan	Zoom Scan
Date	2023-06-30	2023-06-30
psSAR1g [W/Kg]	2.68	2.68
psSAR10g [W/Kg]	1.19	1.20
Power Drift [dB]	-0.00	0.01
TSL Correction	Positive only	Positive only
M2/M1 [%]		79.5
Dist 3dB Peak [mm]		9.0



**System Performance Check\_H3300Hz\_230630 Summary**

Dipole	Frequency [MHz]
D3300V2 - SN1004 HSL	3300.0

**Exposure Conditions**

Phantom Section, TSL	Test Distance [mm]	Band	Group, UID	Frequency [MHz], Channel Number	Conversion Factor	TSL Conductivity [S/m]	TSL Permittivity
Flat, HSL	10		CW, 0--	3300.000, 0	6.68	2.53	37.3

**Hardware Setup**

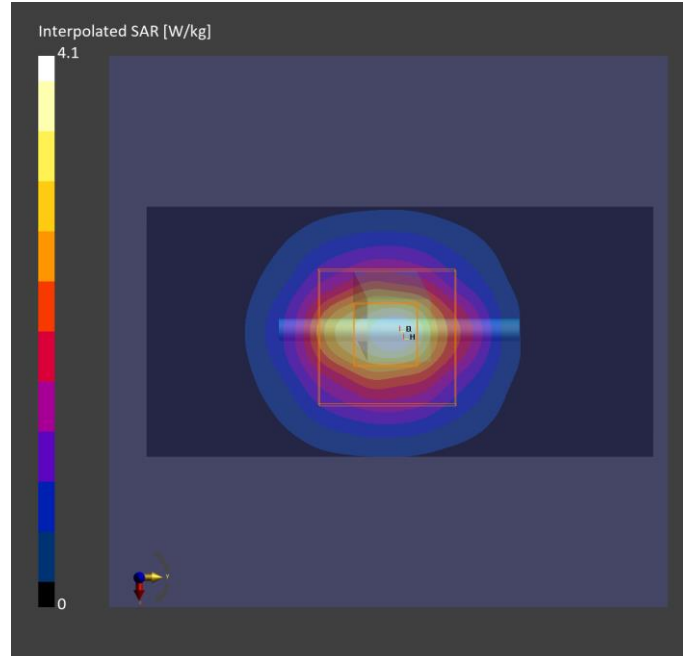
Phantom	TSL, Measured Date	Probe, Calibration Date	DAE, Calibration Date
ELI V8.0 (20deg probe tilt) - 2176	HBBL-600-10000 , 2023-Jun-30	EX3DV4 - SN7737, 2023-06-05	DAE4 Sn1742, 2022-08-31

**Scan Setup**

	Area Scan	Zoom Scan
Grid Extents [mm]	40.0 x 80.0	28.0 x 28.0 x 28.0
Grid Steps [mm]	10.0 x 10.0	5.0 x 5.0 x 1.4
Sensor Surface [mm]	3.0	1.4

**Measurement Results**

	Area Scan	Zoom Scan
Date	2023-06-30	2023-06-30
psSAR1g [W/Kg]	2.95	2.99
psSAR10g [W/Kg]	1.14	1.16
Power Drift [dB]	-0.01	0.08
TSL Correction	Positive only	Positive only
M2/M1 [%]		78.1
Dist 3dB Peak [mm]		8.3



### System Performance Check\_H3500Hz\_230630 Summary

Dipole	Frequency [MHz]
D3500V2 - SN1013 HSL	3500.0

### Exposure Conditions

Phantom Section, TSL	Test Distance [mm]	Band	Group, UID	Frequency [MHz], Channel Number	Conversion Factor	TSL Conductivity [S/m]	TSL Permittivity
Flat, HSL	10		CW, 0--	3500.000, 0	6.87	2.69	37.0

### Hardware Setup

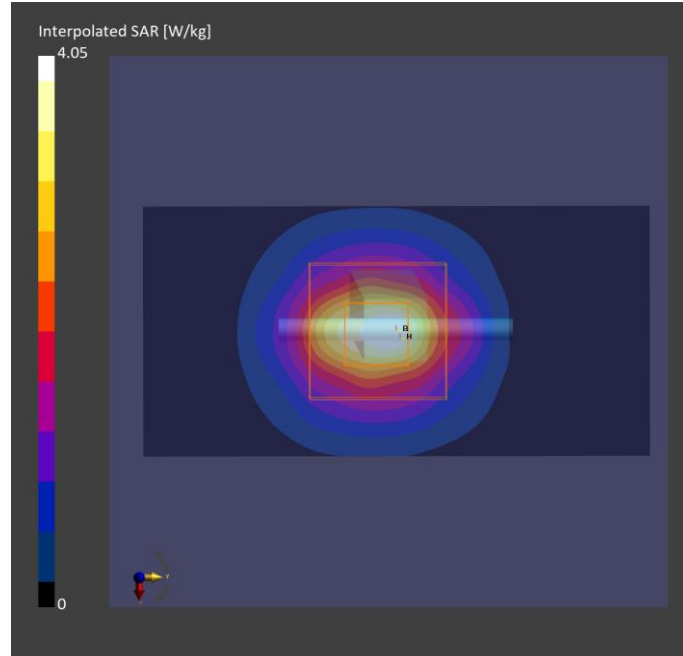
Phantom	TSL, Measured Date	Probe, Calibration Date	DAE, Calibration Date
ELI V8.0 (20deg probe tilt) - 2176	HBBL-600-10000 , 2023-Jun-30	EX3DV4 - SN7737, 2023-06-05	DAE4 Sn1742, 2022-08-31

### Scan Setup

	Area Scan	Zoom Scan
Grid Extents [mm]	40.0 x 80.0	28.0 x 28.0 x 28.0
Grid Steps [mm]	10.0 x 10.0	5.0 x 5.0 x 1.4
Sensor Surface [mm]	3.0	1.4

### Measurement Results

	Area Scan	Zoom Scan
Date	2023-06-30	2023-06-30
psSAR1g [W/Kg]	2.92	2.92
psSAR10g [W/Kg]	1.10	1.13
Power Drift [dB]	-0.02	-0.02
TSL Correction	Positive only	Positive only
M2/M1 [%]		76.0
Dist 3dB Peak [mm]		9.0



**System Performance Check\_H3700Hz\_230630 Summary**

Dipole	Frequency [MHz]
D3700V2 - SN1034 HSL	3700.0

**Exposure Conditions**

Phantom Section, TSL	Test Distance [mm]	Band	Group, UID	Frequency [MHz], Channel Number	Conversion Factor	TSL Conductivity [S/m]	TSL Permittivity
Flat, HSL	10		CW, 0--	3700.000, 0	6.8	2.78	36.8

**Hardware Setup**

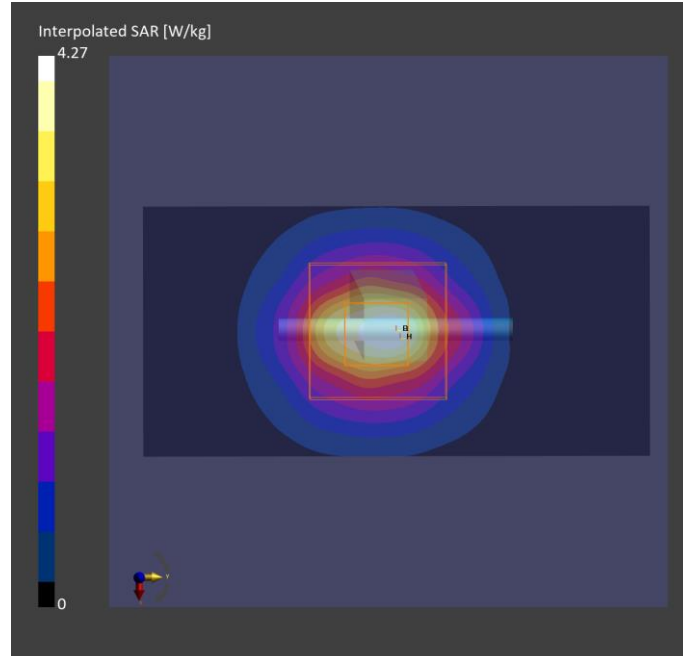
Phantom	TSL, Measured Date	Probe, Calibration Date	DAE, Calibration Date
ELI V8.0 (20deg probe tilt) - 2176	HBBL-600-10000 , 2023-Jun-30	EX3DV4 - SN7737, 2023-06-05	DAE4 Sn1742, 2022-08-31

**Scan Setup**

	Area Scan	Zoom Scan
Grid Extents [mm]	40.0 x 80.0	28.0 x 28.0 x 28.0
Grid Steps [mm]	10.0 x 10.0	5.0 x 5.0 x 1.4
Sensor Surface [mm]	3.0	1.4

**Measurement Results**

	Area Scan	Zoom Scan
Date	2023-06-30	2023-06-30
psSAR1g [W/Kg]	3.08	3.11
psSAR10g [W/Kg]	1.15	1.18
Power Drift [dB]	0.01	0.01
TSL Correction	Positive only	Positive only
M2/M1 [%]		75.9
Dist 3dB Peak [mm]		9.0



### System Performance Check\_H3900Hz\_230630 Summary

Dipole	Frequency [MHz]
D3900V2 - SN1014 HSL	3900.0

### Exposure Conditions

Phantom Section, TSL	Test Distance [mm]	Band	Group, UID	Frequency [MHz], Channel Number	Conversion Factor	TSL Conductivity [S/m]	TSL Permittivity
Flat, HSL	10		CW, 0--	3900.000, 0	6.77	3.12	37.4

### Hardware Setup

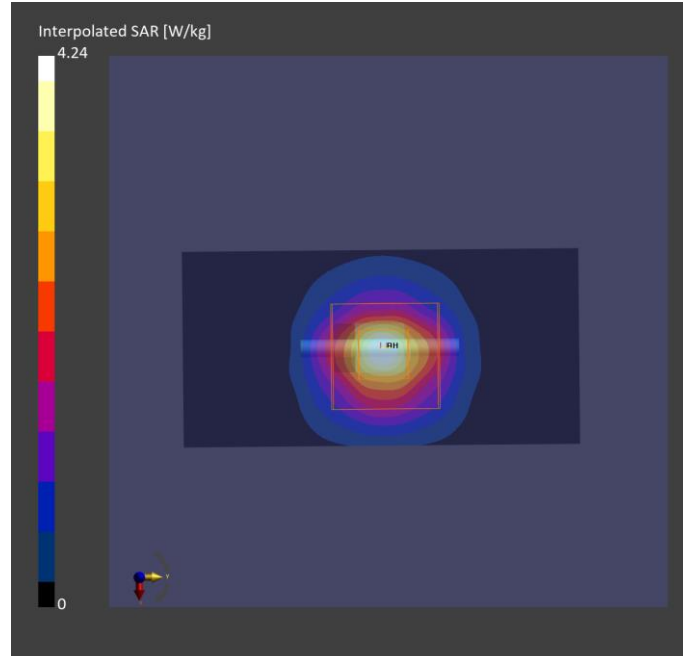
Phantom	TSL, Measured Date	Probe, Calibration Date	DAE, Calibration Date
ELI V8.0 (20deg probe tilt) - 2176	HBBL-600-10000 , 2023-Jun-30	EX3DV4 - SN7737, 2023-06-05	DAE4 Sn1742, 2022-08-31

### Scan Setup

	Area Scan	Zoom Scan
Grid Extents [mm]	40.0 x 80.0	28.0 x 28.0 x 28.0
Grid Steps [mm]	10.0 x 10.0	5.0 x 5.0 x 1.4
Sensor Surface [mm]	3.0	1.4

### Measurement Results

	Area Scan	Zoom Scan
Date	2023-06-30	2023-06-30
psSAR1g [W/Kg]	2.89	3.28
psSAR10g [W/Kg]	1.02	1.17
Power Drift [dB]	-0.00	-0.02
TSL Correction	Positive only	Positive only
M2/M1 [%]		73.5
Dist 3dB Peak [mm]		8.0





### System Performance Check\_H5250Hz\_230628 Summary

Dipole	Frequency [MHz]
D5GHzV2 - SN1358 HSL	5250.0

### Exposure Conditions

Phantom Section, TSL	Test Distance [mm]	Band	Group, UID	Frequency [MHz], Channel Number	Conversion Factor	TSL Conductivity [S/m]	TSL Permittivity
Flat, HSL	10		CW, 0--	5250.000, 0	4.89	4.51	36.4

### Hardware Setup

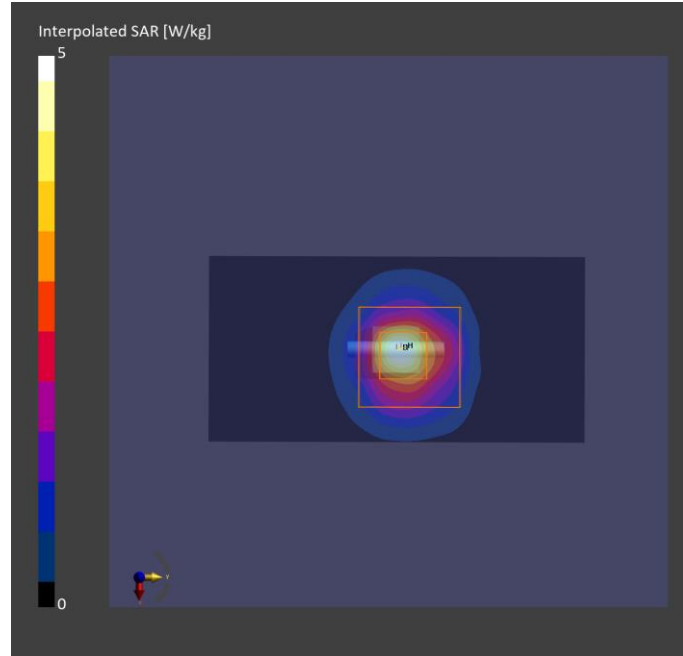
Phantom	TSL, Measured Date	Probe, Calibration Date	DAE, Calibration Date
ELI V8.0 (20deg probe tilt) - 2180	HBBL-600-10000 , 2023-Jun-28	EX3DV4 - SN7757, 2022-09-02	DAE4 Sn1743, 2022-08-25

### Scan Setup

	Area Scan	Zoom Scan
Grid Extents [mm]	40.0 x 80.0	22.0 x 22.0 x 22.0
Grid Steps [mm]	10.0 x 10.0	4.0 x 4.0 x 1.4
Sensor Surface [mm]	3.0	1.4

### Measurement Results

	Area Scan	Zoom Scan
Date	2023-06-28	2023-06-28
psSAR1g [W/Kg]	3.16	3.68
psSAR10g [W/Kg]	0.932	1.06
Power Drift [dB]	-0.00	0.00
TSL Correction	Positive only	Positive only
M2/M1 [%]		65.3
Dist 3dB Peak [mm]		7.4



**System Performance Check\_H5600Hz\_230628 Summary**

Dipole	Frequency [MHz]
D5GHzV2 - SN1358	5600.0

HSL

**Exposure Conditions**

Phantom Section, TSL	Test Distance [mm]	Band	Group, UID	Frequency [MHz], Channel Number	Conversion Factor	TSL Conductivity [S/m]	TSL Permittivity
Flat, HSL	10		CW, 0--	5600.000, 0	4.27	4.90	35.8

**Hardware Setup**

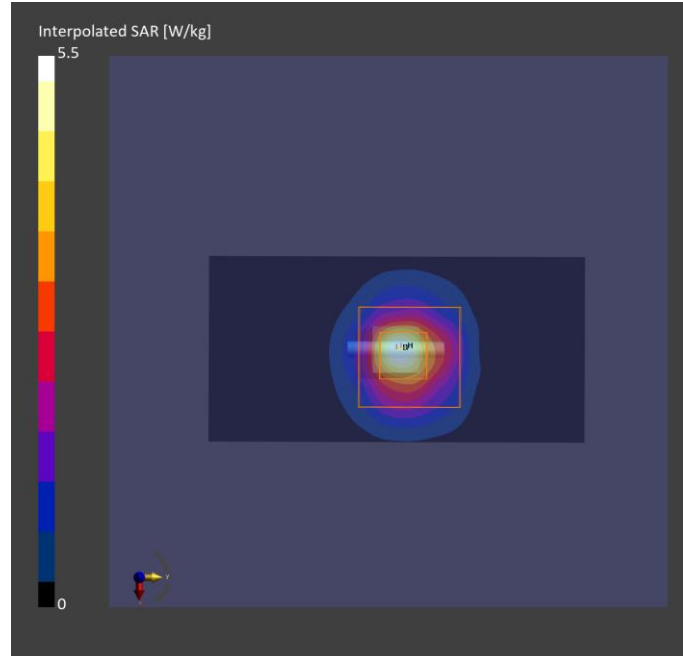
Phantom	TSL, Measured Date	Probe, Calibration Date	DAE, Calibration Date
ELI V8.0 (20deg probe tilt) - 2180	HBBL-600-10000 , 2023-Jun-28	EX3DV4 - SN7757, 2022-09-02	DAE4 Sn1743, 2022-08-25

**Scan Setup**

	Area Scan	Zoom Scan
Grid Extents [mm]	40.0 x 80.0	22.0 x 22.0 x 22.0
Grid Steps [mm]	10.0 x 10.0	4.0 x 4.0 x 1.4
Sensor Surface [mm]	3.0	1.4

**Measurement Results**

	Area Scan	Zoom Scan
Date	2023-06-28	2023-06-28
psSAR1g [W/Kg]	3.52	3.74
psSAR10g [W/Kg]	1.02	1.06
Power Drift [dB]	0.01	0.00
TSL Correction	Positive only	Positive only
M2/M1 [%]		62.2
Dist 3dB Peak [mm]		7.4



### System Performance Check\_H5750Hz\_230628 Summary

Dipole	Frequency [MHz]
D5GHzV2 - SN1358	5750.0

HSL

### Exposure Conditions

Phantom Section, TSL	Test Distance [mm]	Band	Group, UID	Frequency [MHz], Channel Number	Conversion Factor	TSL Conductivity [S/m]	TSL Permittivity
Flat, HSL	10		CW, 0--	5750.000, 0	4.3	5.07	35.5

### Hardware Setup

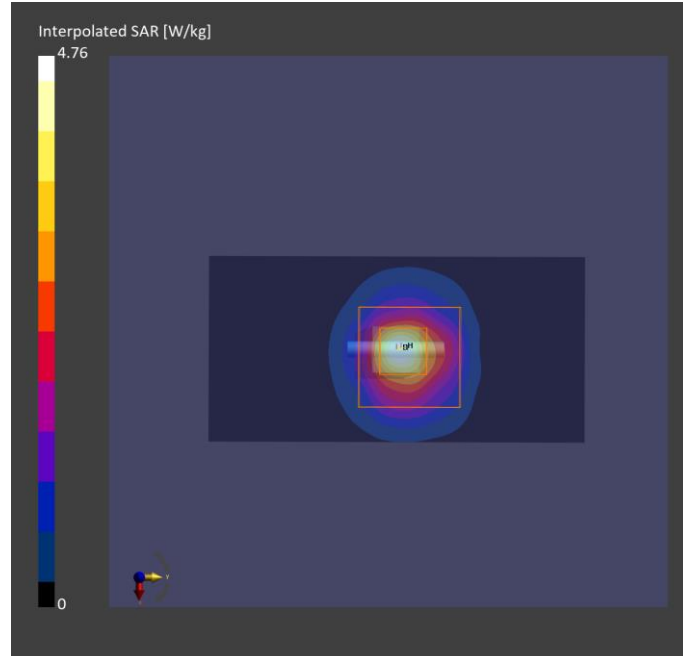
Phantom	TSL, Measured Date	Probe, Calibration Date	DAE, Calibration Date
ELI V8.0 (20deg probe tilt) - 2180	HBBL-600-10000 , 2023-Jun-28	EX3DV4 - SN7757, 2022-09-02	DAE4 Sn1743, 2022-08-25

### Scan Setup

	Area Scan	Zoom Scan
Grid Extents [mm]	40.0 x 80.0	22.0 x 22.0 x 22.0
Grid Steps [mm]	10.0 x 10.0	4.0 x 4.0 x 1.4
Sensor Surface [mm]	3.0	1.4

### Measurement Results

	Area Scan	Zoom Scan
Date	2023-06-28	2023-06-28
psSAR1g [W/Kg]	3.06	3.62
psSAR10g [W/Kg]	0.893	1.04
Power Drift [dB]	0.00	0.02
TSL Correction	Positive only	Positive only
M2/M1 [%]		60.9
Dist 3dB Peak [mm]		7.6



### System Performance Check\_H5750Hz\_230704 Summary

Dipole	Frequency [MHz]
D5GHzV2 - SN1358	5750.0

HSL

### Exposure Conditions

Phantom Section, TSL	Test Distance [mm]	Band	Group, UID	Frequency [MHz], Channel Number	Conversion Factor	TSL Conductivity [S/m]	TSL Permittivity
Flat, HSL	10		CW, 0--	5750.000, 0	4.3	5.07	35.5

### Hardware Setup

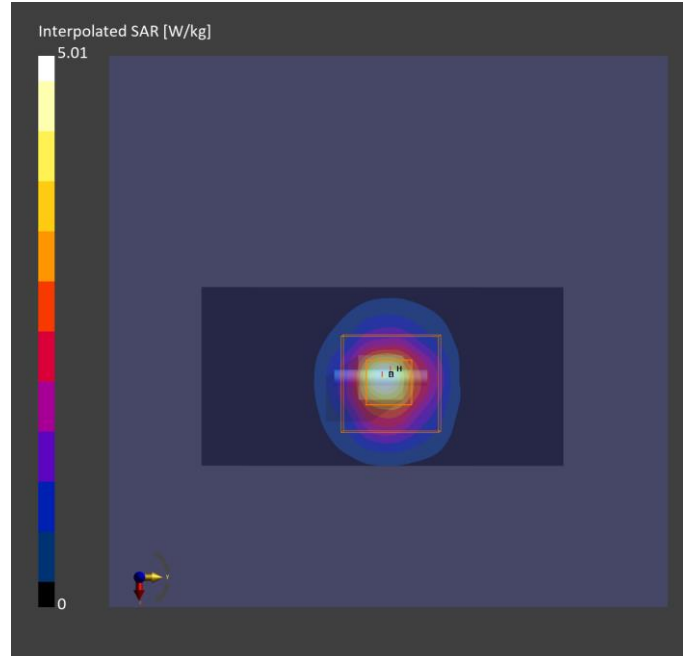
Phantom	TSL, Measured Date	Probe, Calibration Date	DAE, Calibration Date
ELI V8.0 (20deg probe tilt) - 2180	HBBL-600-10000 , 2023-Jul-04	EX3DV4 - SN7757, 2022-09-02	DAE4 Sn1743, 2022-08-25

### Scan Setup

	Area Scan	Zoom Scan
Grid Extents [mm]	40.0 x 80.0	22.0 x 22.0 x 22.0
Grid Steps [mm]	10.0 x 10.0	4.0 x 4.0 x 1.4
Sensor Surface [mm]	3.0	1.4

### Measurement Results

	Area Scan	Zoom Scan
Date	2023-07-04	2023-07-04
psSAR1g [W/Kg]	3.18	3.76
psSAR10g [W/Kg]	0.917	1.07
Power Drift [dB]	0.00	0.00
TSL Correction	Positive only	Positive only
M2/M1 [%]		61.2
Dist 3dB Peak [mm]		7.4



### System Performance Check\_H6500\_230707 Summary

Dipole	Frequency [MHz]
D6.5GHzV2 - SN1081	6500.0

HSL

### Exposure Conditions

Phantom Section, TSL	Test Distance [mm]	Band	Group, UID	Frequency [MHz], Channel Number	Conversion Factor	TSL Conductivity [S/m]	TSL Permittivity
Flat, HSL	5		CW, 0--	6500.000, 0	5.0	6.07	34.2

### Hardware Setup

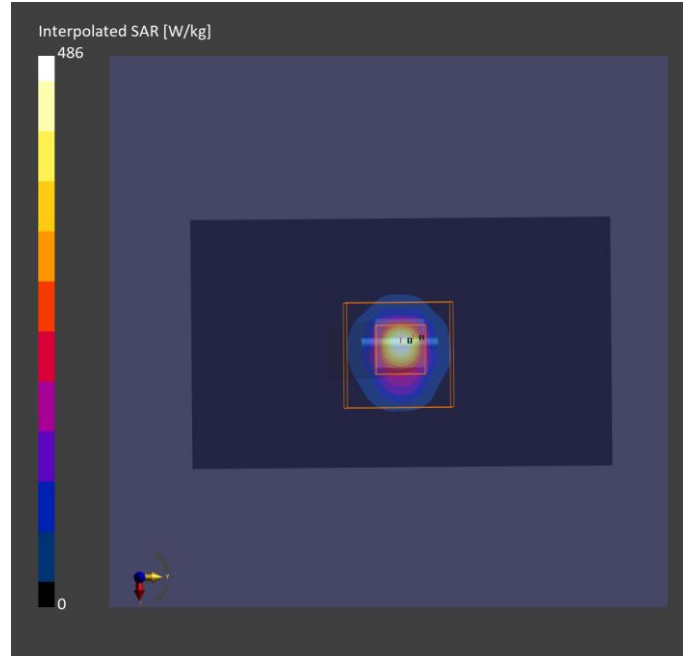
Phantom	TSL, Measured Date	Probe, Calibration Date	DAE, Calibration Date
ELI V8.0 (20deg probe tilt) - 2180	HBBL-600-10000 , 2023-Jul-07	EX3DV4 - SN7757, 2022-09-02	DAE4 Sn1743, 2022-08-25

### Scan Setup

	Area Scan	Zoom Scan
Grid Extents [mm]	51.0 x 85.0	22.0 x 22.0 x 22.0
Grid Steps [mm]	8.5 x 8.5	3.4 x 3.4 x 1.4
Sensor Surface [mm]	3.0	1.4

### Measurement Results

	Area Scan	Zoom Scan
Date	2023-07-07	2023-07-07
psSAR1g [W/Kg]	25.2	29.5
psSAR10g [W/Kg]	5.00	5.47
Power Drift [dB]	-0.00	-0.02
TSL Correction	Positive only	Positive only
M2/M1 [%]		51.5
Dist 3dB Peak [mm]		4.8



### System Performance Check\_H6500\_230710 Summary

Dipole	Frequency [MHz]
D6.5GHzV2 - SN1081	6500.0

HSL

### Exposure Conditions

Phantom Section, TSL	Test Distance [mm]	Band	Group, UID	Frequency [MHz], Channel Number	Conversion Factor	TSL Conductivity [S/m]	TSL Permittivity
Flat, HSL	5		CW, 0--	6500.000, 0	5.0	6.07	34.2

### Hardware Setup

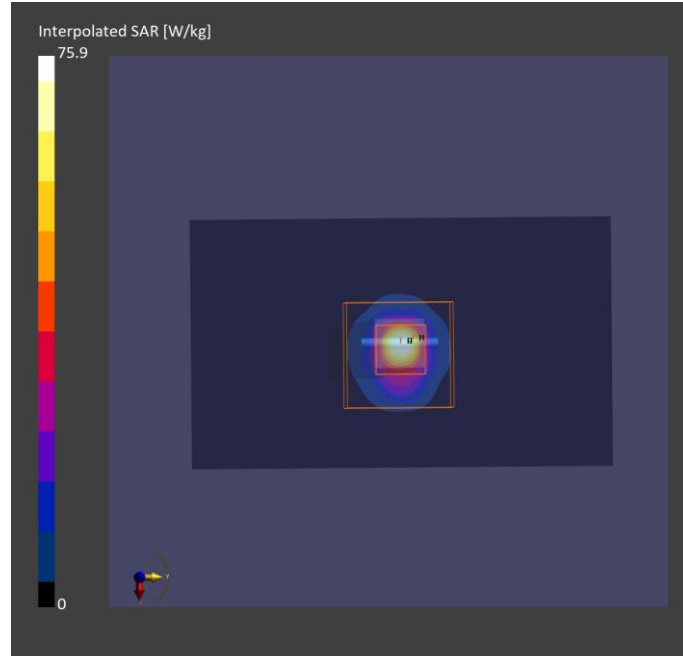
Phantom	TSL, Measured Date	Probe, Calibration Date	DAE, Calibration Date
ELI V8.0 (20deg probe tilt) - 2180	HBBL-600-10000 , 2023-Jul-10	EX3DV4 - SN7757, 2022-09-02	DAE4 Sn1743, 2022-08-25

### Scan Setup

	Area Scan	Zoom Scan
Grid Extents [mm]	51.0 x 85.0	22.0 x 22.0 x 22.0
Grid Steps [mm]	8.5 x 8.5	3.4 x 3.4 x 1.4
Sensor Surface [mm]	3.0	1.4

### Measurement Results

	Area Scan	Zoom Scan
Date	2023-07-10	2023-07-10
psSAR1g [W/Kg]	29.4	30.2
psSAR10g [W/Kg]	5.32	5.61
Power Drift [dB]	-0.02	0.05
TSL Correction	Positive only	Positive only
M2/M1 [%]		51.1
Dist 3dB Peak [mm]		4.8



### System Performance Check\_H10GHz\_230720

#### Device under Test Properties

Model, Manufacturer	Dimensions [mm]	IMEI	DUT Type
, Device	100.0 x 100.0 x 100.0		

#### Exposure Conditions

Phantom Section	Position, Test Distance [mm]	Band	Group, UID	Frequency [MHz], Channel Number	Conversion Factor
5G Air	FRONT, 10.00	Validation band	CW, 0--	10000.0, 10000	1.0

#### Hardware Setup

Phantom	Medium	Probe, Calibration Date	DAE, Calibration Date
mmWave- 5G Phantom	---Air	EUmmWV3 - SN9639_F1-55GHz, 2022-8-24	DAE4 Sn1669, 2023-05-23

#### Scan Setup

	5G Scan
Grid Extents [mm]	120.0 x 120.0
Grid Steps [lambda]	0.25 x 0.25
Sensor Surface [mm]	10.0
MAIA	N/A

#### Measurement Results

	5G Scan
Date	2023-07-20
Avg. Area [cm <sup>2</sup> ]	4.00
psPDn+ [W/m <sup>2</sup> ]	154
psPDtot+ [W/m <sup>2</sup> ]	155
psPDmod+ [W/m <sup>2</sup> ]	158
E <sub>max</sub> [V/m]	277
H <sub>max</sub> [A/m]	
Power Drift [dB]	0.11

