

System Check_Head_1750MHz

Communication System: ; Frequency: 1750.0

Medium: HSL_1750_211102. Medium parameters used: $f= 1750.0$ MHz; $\sigma= 1.48$ S/m; $\epsilon_r = 41.2$

Ambient Temperature: 23.5°C; Liquid Temperature: 22.5°C

DASY6 Configuration:

- Probe: EX3DV4 - SN3728; ConvF(8.16, 8.16, 8.16); Calibrated: 2021-02-23
- Sensor-Surface: 1.4 mm
- Electronics: DAE4 Sn778; Calibrated: 2021-05-21
- Phantom: Twin-SAM V4.0 (30deg probe tilt); Serial: 1488; Section: Flat
- Measurement Software: cDASY6 V6.6.0.13926
- UID: CW, 0--
- MAIA: Area Scan: N/A; Zoom Scan: N/A

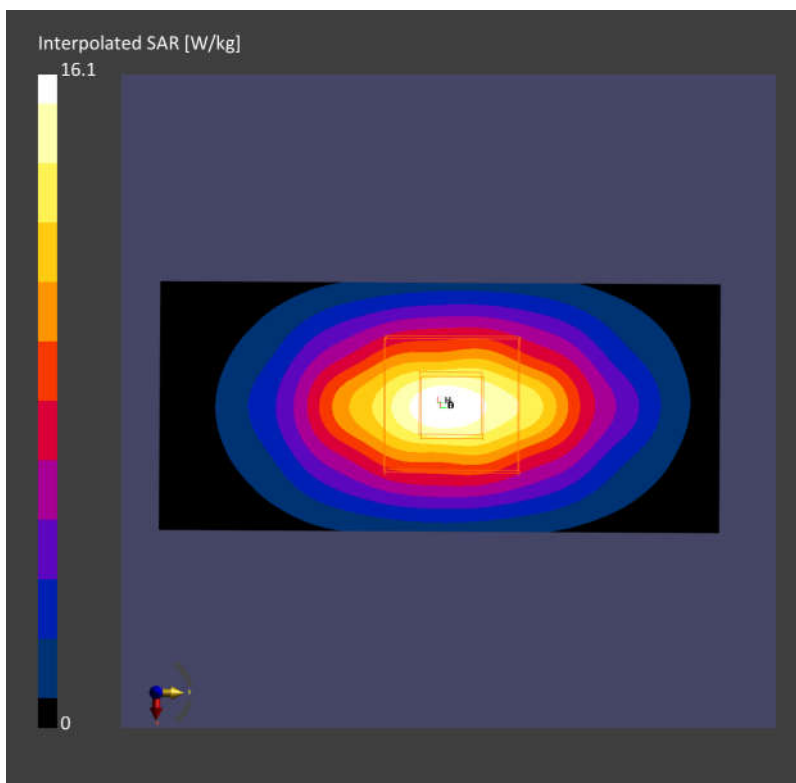
Area Scan (40.0 mm x 90.0 mm): Measurement Grid: 10.0 mm x 15.0 mm

SAR (1g) = 8.74 W/kg; SAR (10g) = 4.66 W/kg;

Zoom Scan (32.0 mm x 32.0 mm x 30.0 mm): Measurement Grid: 6.0 mm x 6.0 mm x 1.5 mm

Power Drift = -0.12 dB

SAR (1g) = 8.83 W/kg; SAR (10g) = 4.73 W/kg;



System Check_Head_1900MHz

Communication System: ; Frequency: 1900.0

Medium: HSL_1900_211102. Medium parameters used: $f= 1900.0$ MHz; $\sigma= 1.49$ S/m; $\epsilon_r = 41.6$

Ambient Temperature: 23.5°C; Liquid Temperature: 22.5°C

DASY6 Configuration:

- Probe: EX3DV4 - SN3728; ConvF(7.92, 7.92, 7.92); Calibrated: 2021-02-23
- Sensor-Surface: 1.4 mm
- Electronics: DAE4 Sn778; Calibrated: 2021-05-21
- Phantom: Twin-SAM V4.0 (30deg probe tilt); Serial: 1488; Section: Flat
- Measurement Software: cDASY6 V6.6.0.13926
- UID: CW, 0--
- MAIA: Area Scan: N/A; Zoom Scan: N/A

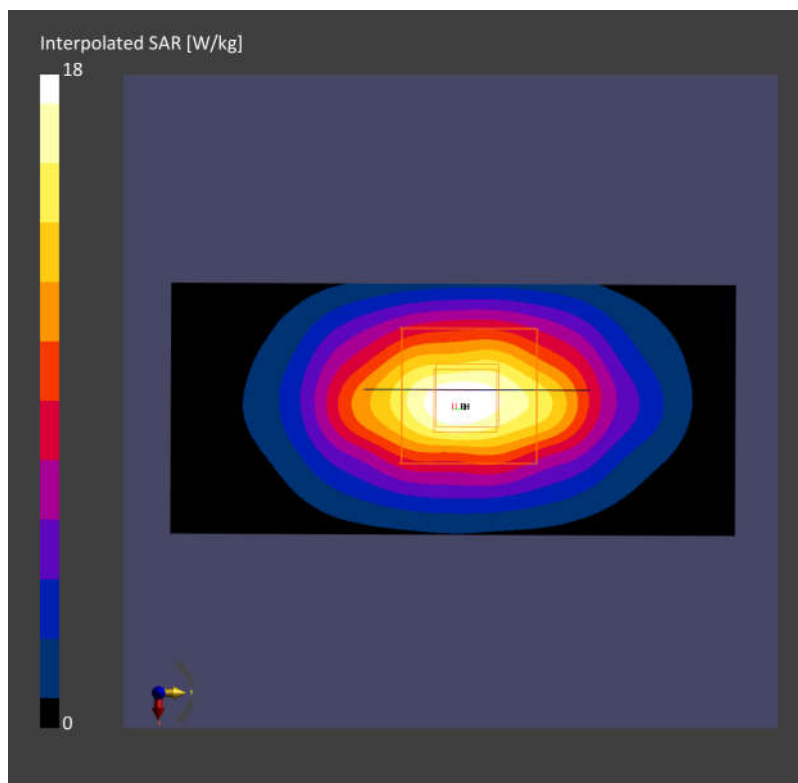
Area Scan (40.0 mm x 90.0 mm): Measurement Grid: 10.0 mm x 15.0 mm

SAR (1g) = 9.55 W/kg; SAR (10g) = 4.96 W/kg;

Zoom Scan (32.0 mm x 32.0 mm x 30.0 mm): Measurement Grid: 6.0 mm x 6.0 mm x 1.5 mm

Power Drift = -0.01 dB

SAR (1g) = 9.71 W/kg; SAR (10g) = 5.07 W/kg;



System Check_Head_2600MHz

Communication System: ; Frequency: 2600.0

Medium: HSL_2600_211102. Medium parameters used: $f= 2600.0$ MHz; $\sigma= 2.06$ S/m; $\epsilon_r = 39.6$

Ambient Temperature: 23.5°C; Liquid Temperature: 22.5°C

DASY6 Configuration:

- Probe: EX3DV4 - SN3728; ConvF(7.15, 7.15, 7.15); Calibrated: 2021-02-23
- Sensor-Surface: 1.4 mm
- Electronics: DAE4 Sn778; Calibrated: 2021-05-21
- Phantom: Twin-SAM V4.0 (30deg probe tilt); Serial: 1488; Section: Flat
- Measurement Software: cDASY6 V6.6.0.13926
- UID: CW, 0--
- MAIA: Area Scan: N/A; Zoom Scan: N/A

Area Scan (40.0 mm x 96.0 mm): Measurement Grid: 10.0 mm x 12.0 mm

SAR (1g) = 12.86 W/kg; SAR (10g) = 5.75 W/kg;

Zoom Scan (30.0 mm x 30.0 mm x 30.0 mm): Measurement Grid: 5.0 mm x 5.0 mm x 1.5 mm

Power Drift = -0.02 dB

SAR (1g) = 12.76 W/kg; SAR (10g) = 5.82 W/kg;

