

System Check_Head_1750MHz

Communication System: ; Frequency: 1750.0

Medium: HSL_1750_211020. Medium parameters used: $f= 1750.0$ MHz; $\sigma= 1.45$ S/m; $\epsilon_r = 41.1$

Ambient Temperature: 23.5°C; Liquid Temperature: 22.5°C

DASY6 Configuration:

- Probe: EX3DV4 - SN3642; ConvF(7.89, 7.89, 7.89); Calibrated: 2020-04-29
- Sensor-Surface: 1.4 mm
- Electronics: DAE4 Sn1647; Calibrated: 2021-01-07
- Phantom: Twin-SAM V4.0 (30deg probe tilt); Serial: 1489; Section: Flat
- Measurement Software: cDASY6 V6.6.0.13926
- UID: CW, 0--
- MAIA: Area Scan: N/A; Zoom Scan: N/A

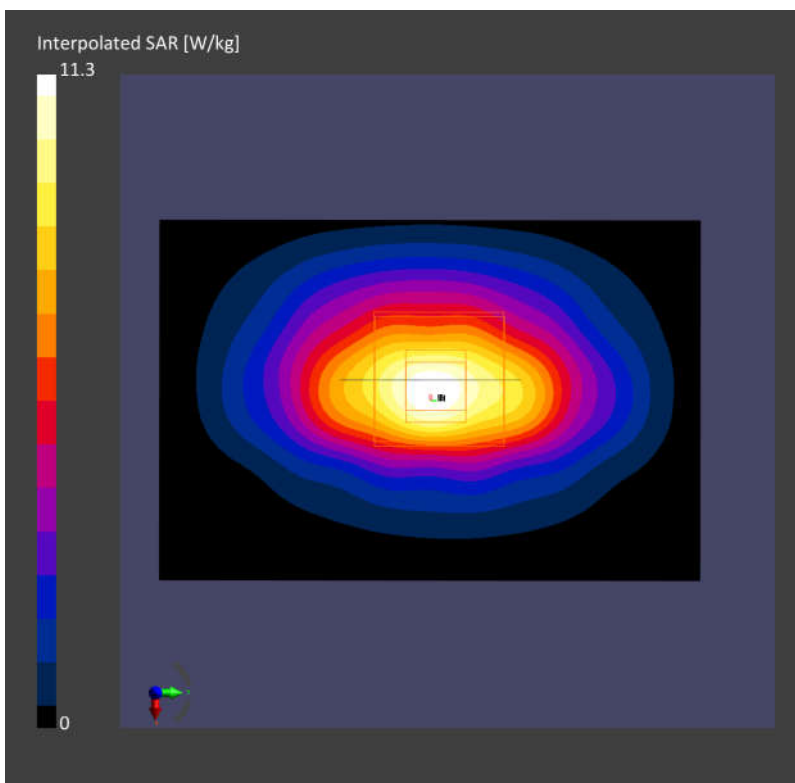
Area Scan (60.0 mm x 90.0 mm): Measurement Grid: 15.0 mm x 15.0 mm

SAR (1g) = 9.18 W/kg; SAR (10g) = 4.97 W/kg;

Zoom Scan (30.0 mm x 30.0 mm x 30.0 mm): Measurement Grid: 6.0 mm x 6.0 mm x 1.5 mm

Power Drift = -0.08 dB

SAR (1g) = 9.39 W/kg; SAR (10g) = 5.04 W/kg;



System Check_Head_1900MHz

Communication System: ; Frequency: 1900.0

Medium: HSL_1900_211020. Medium parameters used: $f= 1900.0$ MHz; $\sigma= 1.47$ S/m; $\epsilon_r = 41.4$

Ambient Temperature: 23.5°C; Liquid Temperature: 22.5°C

DASY6 Configuration:

- Probe: EX3DV4 - SN3642; ConvF(7.75, 7.75, 7.75); Calibrated: 2020-04-29
- Sensor-Surface: 1.4 mm
- Electronics: DAE4 Sn1647; Calibrated: 2021-01-07
- Phantom: Twin-SAM V4.0 (30deg probe tilt); Serial: 1489; Section: Flat
- Measurement Software: cDASY6 V6.6.0.13926
- UID: CW, 0--
- MAIA: Area Scan: N/A; Zoom Scan: N/A

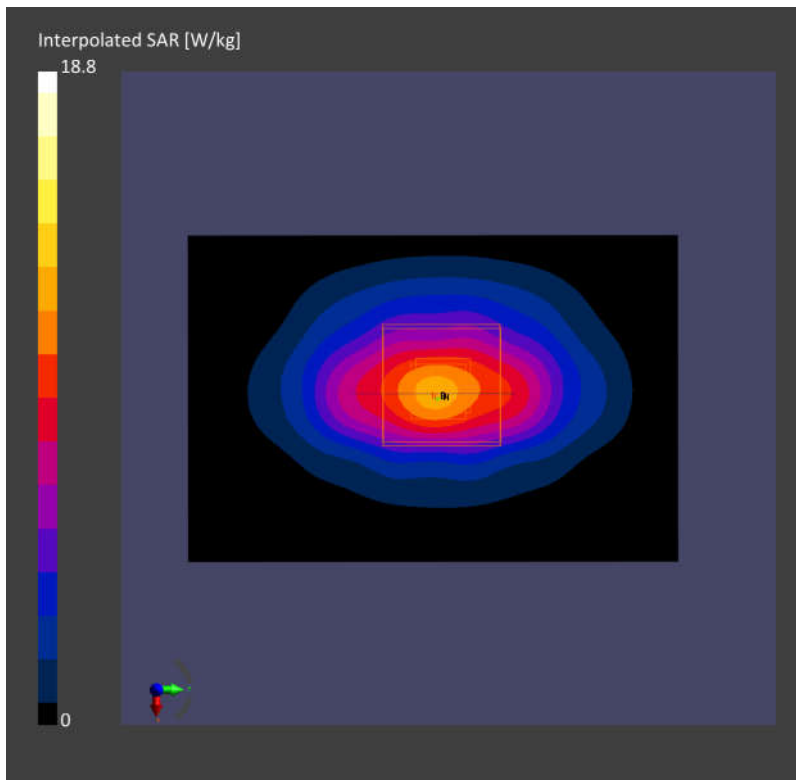
Area Scan (60.0 mm x 90.0 mm): Measurement Grid: 15.0 mm x 15.0 mm

SAR (1g) = 9.95 W/kg; SAR (10g) = 5.18 W/kg;

Zoom Scan (30.0 mm x 30.0 mm x 30.0 mm): Measurement Grid: 6.0 mm x 6.0 mm x 1.5 mm

Power Drift = -0.13 dB

SAR (1g) = 9.99 W/kg; SAR (10g) = 5.21 W/kg;



System Check_Head_2600MHz

Communication System: ; Frequency: 2600.0

Medium: HSL_2600_211020. Medium parameters used: $f=2600.0$ MHz; $\sigma=2.05$ S/m; $\epsilon_r=38.6$

Ambient Temperature: 23.5°C; Liquid Temperature: 22.5°C

DASY6 Configuration:

- Probe: EX3DV4 - SN3642; ConvF(6.95, 6.95, 6.95); Calibrated: 2020-04-29
- Sensor-Surface: 1.4 mm
- Electronics: DAE4 Sn1647; Calibrated: 2021-01-07
- Phantom: Twin-SAM V4.0 (30deg probe tilt); Serial: 1489; Section: Flat
- Measurement Software: cDASY6 V6.6.0.13926
- UID: CW, 0--
- MAIA: Area Scan: N/A; Zoom Scan: N/A

Area Scan (40.0 mm x 80.0 mm): Measurement Grid: 10.0 mm x 10.0 mm

SAR (1g) = 14.7 W/kg; SAR (10g) = 7.24 W/kg;

Zoom Scan (30.0 mm x 30.0 mm x 30.0 mm): Measurement Grid: 5.0 mm x 5.0 mm x 1.5 mm

Power Drift = 0.09 dB

SAR (1g) = 15.1 W/kg; SAR (10g) = 7.18 W/kg;

