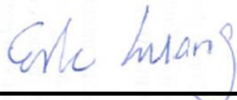


FCC SAR Test Report

APPLICANT : Getac Technology Corporation.
EQUIPMENT : WWAN module
BRAND NAME : Getac
MODEL NAME : EM7455
FCC ID : QYLEM7455RC
STANDARD : FCC 47 CFR Part 2 (2.1093)
ANSI/IEEE C95.1-1992
IEEE 1528-2013

We, SPORTON INTERNATIONAL INC., would like to declare that the tested sample has been evaluated in accordance with the procedures and had been in compliance with the applicable technical standards.

The test results in this report apply exclusively to the tested model / sample. Without written approval of SPORTON INTERNATIONAL INC., the test report shall not be reproduced except in full.



Reviewed by: Eric Huang / Manager



Approved by: Jones Tsai / Manager



SPORTON INTERNATIONAL INC.

No.52, Hwa Ya 1st Rd., Hwa Ya Technology Park, Kwei-Shan District, Taoyuan City, Taiwan (R.O.C.)



Table of Contents

1. Statement of Compliance 4

2. Administration Data 5

3. Guidance Applied..... 5

4. Equipment Under Test (EUT) Information 6

 4.1 General Information 6

 4.2 General LTE SAR Test and Reporting Considerations 8

5. Proximity Sensor Triggering Test.....10

6. RF Exposure Limits.....12

 6.1 Uncontrolled Environment.....12

 6.2 Controlled Environment.....12

7. Specific Absorption Rate (SAR).....13

 7.1 Introduction13

 7.2 SAR Definition.....13

8. System Description and Setup14

 8.1 E-Field Probe15

 8.2 Data Acquisition Electronics (DAE)15

 8.3 Phantom.....16

 8.4 Device Holder.....17

9. Measurement Procedures18

 9.1 Spatial Peak SAR Evaluation.....18

 9.2 Power Reference Measurement.....19

 9.3 Area Scan19

 9.4 Zoom Scan.....20

 9.5 Volume Scan Procedures.....20

 9.6 Power Drift Monitoring.....20

10. Test Equipment List.....21

11. System Verification22

 11.1 Tissue Simulating Liquids.....22

 11.2 Tissue Verification23

 11.3 System Performance Check Results24

12. RF Exposure Positions24

 12.1 SAR Testing for Tablet.....24

13. Conducted RF Output Power (Unit: dBm).....25

14. Antenna Location63

15. SAR Test Results64

 15.1 Body SAR65

16. Uncertainty Assessment67

17. References67

Appendix A. Plots of System Performance Check

Appendix B. Plots of High SAR Measurement

Appendix C. DASYS Calibration Certificate

Appendix D. Test Setup Photos



Revision History

REPORT NO.	VERSION	DESCRIPTION	ISSUED DATE
FA391803-39	Rev. 01	Initial issue of report	Feb. 07, 2018



1. Statement of Compliance

The maximum results of Specific Absorption Rate (SAR) found during testing for **Getac Technology Corporation., WWAN module, EM7455**, are as follows.

Equipment Class	Frequency Band		Highest SAR Summary
			Body (Separation 0mm)
			1g SAR (W/kg)
Licensed	WCDMA	WCDMA II	1.16
		WCDMA IV	0.93
		WCDMA V	1.00
	LTE	LTE Band 4	0.91
		LTE Band 7	0.44
		LTE Band 12	0.78
		LTE Band 13	0.98
		LTE Band 2 / 25	1.04
		LTE Band 5 / 26	0.86
		LTE Band 41	0.38
		Date of Testing:	
Remark:			
1. Since SAR results in this report are small than original filing, for simultaneous transmission analysis can refer to the original report FCC ID: QYLEM7455F (Sporton Report No. FA391803-20).			

This device is in compliance with Specific Absorption Rate (SAR) for general population/uncontrolled exposure limits (1.6 W/kg) specified in FCC 47 CFR part 2 (2.1093) and ANSI/IEEE C95.1-1992, and had been tested in accordance with the measurement methods and procedures specified in IEEE 1528-2013 and FCC KDB publications.



2. Administration Data

Sporton Lab is accredited to ISO 17025 by Taiwan Accreditation Foundation (TAF code: 1190) and the FCC designation No. TW1190 under the FCC 2.948(e) by Mutual Recognition Agreement (MRA) in FCC test.

Testing Laboratory	
Test Site	SPORTON INTERNATIONAL INC.
Test Site Location	No.52, Hwa Ya 1st Rd., Hwa Ya Technology Park, Kwei-Shan District, Taoyuan City, Taiwan (R.O.C.) TEL: +886-3-327-3456 FAX: +886-3-328-4978

Applicant	
Company Name	Getac Technology Corporation.
Address	5F., Building A, No. 209, Sec.1, Nangang Rd.,Nangang Dist., Taipei City 11568, Taiwan, R.O.C.

Manufacturer	
Company Name	Sierra Wireless, Inc.
Address	13811, Wireless Way, Richmond, British Columbia

3. Guidance Applied

The Specific Absorption Rate (SAR) testing specification, method, and procedure for this device is in accordance with the following standards:

- FCC 47 CFR Part 2 (2.1093)
- ANSI/IEEE C95.1-1992
- IEEE 1528-2013
- FCC KDB 865664 D01 SAR Measurement 100 MHz to 6 GHz v01r04
- FCC KDB 865664 D02 SAR Reporting v01r02
- FCC KDB 447498 D01 General RF Exposure Guidance v06
- FCC KDB 616217 D04 SAR for laptop and tablets v01r02
- FCC KDB 941225 D01 3G SAR Procedures v03r01
- FCC KDB 941225 D05 SAR for LTE Devices v02r05
- FCC KDB 941225 D05A Rel.10 LTE SAR Test Guidance v01r02



4. Equipment Under Test (EUT) Information

4.1 General Information

Product Feature & Specification	
Equipment Name	WWAN module
Brand Name	Getac
Model Name	EM7455
FCC ID	QYLEM7455RC
Wireless Technology and Frequency Range	WCDMA Band II: 1852.4 MHz ~ 1907.6 MHz WCDMA Band IV: 1712.4 MHz ~ 1752.6 MHz WCDMA Band V: 826.4 MHz ~ 846.6 MHz LTE Band 2: 1850.7 MHz ~ 1909.3 MHz LTE Band 4: 1710.7 MHz ~ 1754.3 MHz LTE Band 5: 824.7 MHz ~ 848.3 MHz LTE Band 7: 2502.5 MHz ~ 2567.5 MHz LTE Band 12: 699.7 MHz ~ 715.3 MHz LTE Band 13: 779.5 MHz ~ 784.5 MHz LTE Band 25: 1850.7 MHz ~ 1914.3 MHz LTE Band 26: 814.7 MHz ~ 848.3 MHz LTE Band 41: 2498.5 MHz ~ 2687.5 MHz
Mode	RMC 12.2Kbps HSDPA HSUPA DC-HSDPA LTE: QPSK, 16QAM

Product Feature & Specification	
Equipment Name	Tablet
Brand Name	Getac
Model Name	RC11
Integrated WLAN module	Brand Name: Intel Model Name: 8265NGW
Wireless Technology and Frequency Range	WLAN 2.4GHz Band: 2412 MHz ~ 2462 MHz WLAN 5.2GHz Band: 5180 MHz ~ 5240 MHz WLAN 5.3GHz Band: 5260 MHz ~ 5320 MHz WLAN 5.5GHz Band: 5500 MHz ~ 5720 MHz WLAN 5.8GHz Band: 5745 MHz ~ 5825 MHz Bluetooth: 2402 MHz ~ 2480 MHz
Mode	WLAN 2.4GHz : 802.11b/g/n HT20/HT40 WLAN 5GHz : 802.11a/n/ac HT20/HT40/VHT20/VHT40/VHT80 Bluetooth BR/EDR/LE
EUT Stage	Production Unit
Remark:	
1. The device has 2 versions, the difference between them as following table and includes verification of worst case found in the original report (Sporton Report No. FA391803-20) performed testing.	



Sample Information		
	SKU A	SKU B
CPU	i3-7100U	i3-7100U
DDR	8G	8G
SSD	64GB	256GB
Panel	AUO HD B116XAN05.0	AUO HD B116XAN05.0
Digitizer	Getac	Not Support
Option Bay	BCR	NA(MSR)
Expansion Bay	RFID	NA
WLAN/BT	Support	Support
WWAN	Support	Support
GPS	Support	Support
Webcam FHD	Support	Support
IR Webcam	Support	Support
RFID	Support	Not Support



4.2 General LTE SAR Test and Reporting Considerations

Summarized necessary items addressed in KDB 941225 D05 v02r05																																																																										
FCC ID	QYLEM7455RC																																																																									
Equipment Name	WWAN module																																																																									
Operating Frequency Range of each LTE transmission band	LTE Band 2: 1850.7 MHz ~ 1909.3 MHz LTE Band 4: 1710.7 MHz ~ 1754.3 MHz LTE Band 5: 824.7 MHz ~ 848.3 MHz LTE Band 7: 2502.5 MHz ~ 2567.5 MHz LTE Band 12: 699.7 MHz ~ 715.3 MHz LTE Band 13: 779.5 MHz ~ 784.5 MHz LTE Band 25: 1850.7 MHz ~ 1914.3 MHz LTE Band 26: 814.7 MHz ~ 848.3 MHz LTE Band 41: 2498.5 MHz ~ 2687.5 MHz																																																																									
Channel Bandwidth	LTE Band 02: 1.4MHz, 3MHz, 5MHz, 10MHz, 15MHz, 20MHz LTE Band 04: 1.4MHz, 3MHz, 5MHz, 10MHz, 15MHz, 20MHz LTE Band 05: 1.4MHz, 3MHz, 5MHz, 10MHz LTE Band 07: 5MHz, 10MHz, 15MHz, 20MHz LTE Band 12: 1.4MHz, 3MHz, 5MHz, 10MHz LTE Band 13: 5MHz, 10MHz LTE Band 25: 1.4MHz, 3MHz, 5MHz, 10MHz, 15MHz, 20MHz LTE Band 26: 1.4MHz, 3MHz, 5MHz, 10MHz, 15MHz LTE Band 41: 5MHz, 10MHz, 15MHz, 20MHz																																																																									
uplink modulations used	QPSK / 16QAM																																																																									
LTE Voice / Data requirements	Data only																																																																									
LTE MPR permanently built-in by design	<p align="center">Table 6.2.3-1: Maximum Power Reduction (MPR) for Power Class 1, 2 and 3</p> <table border="1"> <thead> <tr> <th rowspan="2">Modulation</th> <th colspan="6">Channel bandwidth / Transmission bandwidth (N_{RB})</th> <th rowspan="2">MPR (dB)</th> </tr> <tr> <th>1.4 MHz</th> <th>3.0 MHz</th> <th>5 MHz</th> <th>10 MHz</th> <th>15 MHz</th> <th>20 MHz</th> </tr> </thead> <tbody> <tr> <td>QPSK</td> <td>> 5</td> <td>> 4</td> <td>> 8</td> <td>> 12</td> <td>> 16</td> <td>> 18</td> <td>≤ 1</td> </tr> <tr> <td>16 QAM</td> <td>≤ 5</td> <td>≤ 4</td> <td>≤ 8</td> <td>≤ 12</td> <td>≤ 16</td> <td>≤ 18</td> <td>≤ 1</td> </tr> <tr> <td>16 QAM</td> <td>> 5</td> <td>> 4</td> <td>> 8</td> <td>> 12</td> <td>> 16</td> <td>> 18</td> <td>≤ 2</td> </tr> <tr> <td>64 QAM</td> <td>≤ 5</td> <td>≤ 4</td> <td>≤ 8</td> <td>≤ 12</td> <td>≤ 16</td> <td>≤ 18</td> <td>≤ 2</td> </tr> <tr> <td>64 QAM</td> <td>> 5</td> <td>> 4</td> <td>> 8</td> <td>> 12</td> <td>> 16</td> <td>> 18</td> <td>≤ 3</td> </tr> <tr> <td>256 QAM</td> <td colspan="6">≥ 1</td> <td>≤ 5</td> </tr> </tbody> </table>												Modulation	Channel bandwidth / Transmission bandwidth (N _{RB})						MPR (dB)	1.4 MHz	3.0 MHz	5 MHz	10 MHz	15 MHz	20 MHz	QPSK	> 5	> 4	> 8	> 12	> 16	> 18	≤ 1	16 QAM	≤ 5	≤ 4	≤ 8	≤ 12	≤ 16	≤ 18	≤ 1	16 QAM	> 5	> 4	> 8	> 12	> 16	> 18	≤ 2	64 QAM	≤ 5	≤ 4	≤ 8	≤ 12	≤ 16	≤ 18	≤ 2	64 QAM	> 5	> 4	> 8	> 12	> 16	> 18	≤ 3	256 QAM	≥ 1						≤ 5
Modulation	Channel bandwidth / Transmission bandwidth (N _{RB})						MPR (dB)																																																																			
	1.4 MHz	3.0 MHz	5 MHz	10 MHz	15 MHz	20 MHz																																																																				
QPSK	> 5	> 4	> 8	> 12	> 16	> 18	≤ 1																																																																			
16 QAM	≤ 5	≤ 4	≤ 8	≤ 12	≤ 16	≤ 18	≤ 1																																																																			
16 QAM	> 5	> 4	> 8	> 12	> 16	> 18	≤ 2																																																																			
64 QAM	≤ 5	≤ 4	≤ 8	≤ 12	≤ 16	≤ 18	≤ 2																																																																			
64 QAM	> 5	> 4	> 8	> 12	> 16	> 18	≤ 3																																																																			
256 QAM	≥ 1						≤ 5																																																																			
LTE A-MPR	In the base station simulator configuration, Network Setting value is set to NS_01 to disable A-MPR during SAR testing and the LTE SAR tests was transmitting on all TTI frames (Maximum TTI)																																																																									
Spectrum plots for RB configuration	A properly configured base station simulator was used for the SAR and power measurement; therefore, spectrum plots for each RB allocation and offset configuration are not included in the SAR report.																																																																									
Power reduction applied to satisfy SAR compliance	Yes, Proximity Sensor power reduction for UMTS 2/4/5, LTE 2/4/5/13/25/26																																																																									
LTE Carrier Aggregation Combinations	Inter-Band and Intra-Band possible combinations as below page and the detail power verification please referred to section 13.																																																																									
LTE Carrier Aggregation Additional Information	This device does not support full CA features on 3GPP Release 10. It supports a maximum of 2 carriers in the downlink only. All uplink communications are identical to the Release 8 Specifications. Uplink communications are done on the PCC. Due to carrier capability, only the combinations listed above are supported. The following LTE Release features are not supported: Relay, HetNet, Enhanced MIMO, eICI, WiFi Offloading, MDH, eMBMA, Cross-Carrier Scheduling, Enhanced SC-FDMA.																																																																									
Transmission (H, M, L) channel numbers and frequencies in each LTE band																																																																										
LTE Band 2																																																																										
	Bandwidth 1.4 MHz		Bandwidth 3 MHz		Bandwidth 5 MHz		Bandwidth 10 MHz		Bandwidth 15 MHz		Bandwidth 20 MHz																																																															
	Ch. #	Freq. (MHz)	Ch. #	Freq. (MHz)	Ch. #	Freq. (MHz)	Ch. #	Freq. (MHz)	Ch. #	Freq. (MHz)	Ch. #	Freq. (MHz)																																																														
L	18607	1850.7	18615	1851.5	18625	1852.5	18650	1855	18675	1857.5	18700	1860																																																														
M	18900	1880	18900	1880	18900	1880	18900	1880	18900	1880	18900	1880																																																														
H	19193	1909.3	19185	1908.5	19175	1907.5	19150	1905	19125	1902.5	19100	1900																																																														



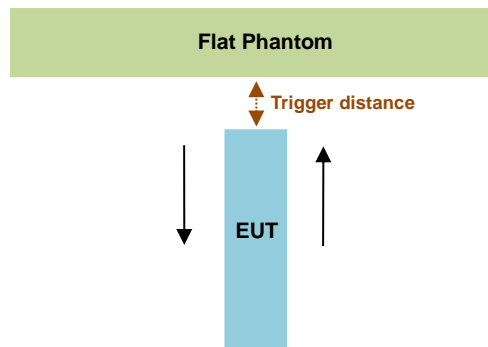
LTE Band 4																
	Bandwidth 1.4 MHz		Bandwidth 3 MHz		Bandwidth 5 MHz		Bandwidth 10 MHz		Bandwidth 15 MHz		Bandwidth 20 MHz					
	Ch. #	Freq. (MHz)	Ch. #	Freq. (MHz)	Ch. #	Freq. (MHz)	Ch. #	Freq. (MHz)	Ch. #	Freq. (MHz)	Ch. #	Freq. (MHz)				
L	19957	1710.7	19965	1711.5	19975	1712.5	20000	1715	20025	1717.5	20050	1720				
M	20175	1732.5	20175	1732.5	20175	1732.5	20175	1732.5	20175	1732.5	20175	1732.5				
H	20393	1754.3	20385	1753.5	20375	1752.5	20350	1750	20325	1747.5	20300	1745				
LTE Band 5																
	Bandwidth 1.4 MHz		Bandwidth 3 MHz		Bandwidth 5 MHz		Bandwidth 10 MHz		Bandwidth 15 MHz		Bandwidth 20 MHz					
	Ch. #	Freq. (MHz)	Ch. #	Freq. (MHz)	Ch. #	Freq. (MHz)	Ch. #	Freq. (MHz)	Ch. #	Freq. (MHz)	Ch. #	Freq. (MHz)				
L	20407	824.7	20415	825.5	20425	826.5	20450	829	20450	829	20450	829				
M	20525	836.5	20525	836.5	20525	836.5	20525	836.5	20525	836.5	20525	836.5				
H	20643	848.3	20635	847.5	20625	846.5	20600	844	20600	844	20600	844				
LTE Band 7																
	Bandwidth 5 MHz		Bandwidth 10 MHz		Bandwidth 15 MHz		Bandwidth 20 MHz		Bandwidth 15 MHz		Bandwidth 20 MHz					
	Ch. #	Freq. (MHz)	Ch. #	Freq. (MHz)	Ch. #	Freq. (MHz)	Ch. #	Freq. (MHz)	Ch. #	Freq. (MHz)	Ch. #	Freq. (MHz)				
L	20775	2502.5	20800	2505	20825	2507.5	20850	2510	20850	2510	20850	2510				
M	21100	2535	21100	2535	21100	2535	21100	2535	21100	2535	21100	2535				
H	21425	2567.5	21400	2565	21375	2562.5	21350	2560	21350	2560	21350	2560				
LTE Band 12																
	Bandwidth 1.4 MHz		Bandwidth 3 MHz		Bandwidth 5 MHz		Bandwidth 10 MHz		Bandwidth 15 MHz		Bandwidth 20 MHz					
	Ch. #	Freq. (MHz)	Ch. #	Freq. (MHz)	Ch. #	Freq. (MHz)	Ch. #	Freq. (MHz)	Ch. #	Freq. (MHz)	Ch. #	Freq. (MHz)				
L	23017	699.7	23025	700.5	23035	701.5	23060	704	23060	704	23060	704				
M	23095	707.5	23095	707.5	23095	707.5	23095	707.5	23095	707.5	23095	707.5				
H	23173	715.3	23165	714.5	23155	713.5	23130	711	23130	711	23130	711				
LTE Band 13																
	Bandwidth 5 MHz				Bandwidth 10 MHz				Bandwidth 15 MHz				Bandwidth 20 MHz			
	Channel #		Freq.(MHz)		Channel #		Freq.(MHz)		Channel #		Freq.(MHz)		Channel #		Freq.(MHz)	
L	23205		779.5		23230		782		23255		784.5		23280		787	
M	23230		782		23255		784.5		23280		787		23305		789.5	
H	23255		784.5		23280		787		23305		789.5		23330		792	
LTE Band 25																
	Bandwidth 1.4 MHz		Bandwidth 3 MHz		Bandwidth 5 MHz		Bandwidth 10 MHz		Bandwidth 15 MHz		Bandwidth 20 MHz					
	Ch. #	Freq. (MHz)	Ch. #	Freq. (MHz)	Ch. #	Freq. (MHz)	Ch. #	Freq. (MHz)	Ch. #	Freq. (MHz)	Ch. #	Freq. (MHz)				
L	26047	1850.7	26055	1851.5	26065	1852.5	26090	1855	26115	1857.5	26140	1860				
M	26340	1880	26340	1880	26340	1880	26340	1880	26340	1880	26340	1880				
H	26683	1914.3	26675	1913.5	26665	1912.5	26640	1910	26615	1907.5	26590	1905				
LTE Band 26																
	Bandwidth 1.4 MHz		Bandwidth 3 MHz		Bandwidth 5 MHz		Bandwidth 10 MHz		Bandwidth 15 MHz		Bandwidth 20 MHz					
	Ch. #	Freq. (MHz)	Ch. #	Freq. (MHz)	Ch. #	Freq. (MHz)	Ch. #	Freq. (MHz)	Ch. #	Freq. (MHz)	Ch. #	Freq. (MHz)				
L	26697	814.7	26705	815.5	26715	816.5	26740	819	26765	821.5	26790	824				
M	26865	831.5	26865	831.5	26865	831.5	26865	831.5	26865	831.5	26865	831.5				
H	27033	848.3	27025	847.5	27015	846.5	26990	844	26965	841.5	26940	839				
LTE Band 41																
	Bandwidth 5 MHz		Bandwidth 10 MHz		Bandwidth 15 MHz		Bandwidth 20 MHz		Bandwidth 15 MHz		Bandwidth 20 MHz					
	Ch. #	Freq. (MHz)	Ch. #	Freq. (MHz)	Ch. #	Freq. (MHz)	Ch. #	Freq. (MHz)	Ch. #	Freq. (MHz)	Ch. #	Freq. (MHz)				
L	39675	2498.5	39700	2501	39725	2503.5	39750	2506	39775	2508.5	39800	2511				
L	40148	2545.8	40160	2547	40173	2548.3	40185	2549.5	40197	2550.5	40210	2551.5				
M	40620	2593	40620	2593	40620	2593	40620	2593	40620	2593	40620	2593				
H	41093	2640.3	41080	2639	41068	2637.8	41055	2636.5	41042	2635	41030	2634				
H	41565	2687.5	41540	2685	41515	2682.5	41490	2680	41465	2677.5	41440	2675				

5. Proximity Sensor Triggering Test

<Proximity Sensor Triggering Distance (KDB 616217 D04 section 6.2)>:

Proximity sensor triggering distance testing was performed according to the procedures outlined in KDB 616217 D04 section 6.2, and EUT moving further away from the flat phantom and EUT moving toward the flat phantom were both assessed. The details are illustrated in the exhibit “P-Sensor operational description”, and the shortest triggering distances were reported and used for SAR assessment.

In the preliminary triggering distance testing, the tissue-equivalent medium for different frequency bands were used for verification; no other frequency bands tissue-equivalent medium was found to result in shortest triggering distance than that for 1900MHz, and the tissue-equivalent medium for 1900MHz was used for formal proximity sensor triggering testing.



Proximity Sensor Trigger Distance (mm)	
Position	Bottom Face
Minimum	11

<Proximity Sensor Triggering Coverage (KDB 616217 D04 section 6.3)>:

If a sensor is spatially offset from the antenna(s), it is necessary to verify sensor triggering for conditions where the antenna is next to the user but the sensor is laterally further away to ensure sensor coverage is sufficient for reducing the power to maintain compliance. For p-sensor coverage testing, the device is moved and “along the direction of maximum antenna and sensor offset”.

Illustrated in the internal photo exhibit, although the sensor is spatially offset, there is no trigger condition where the antenna is next to the user but the sensor is laterally further away, therefore proximity sensor coverage testing is not required.

This procedure is not required because antenna and sensor are collocated and the peak SAR location is overlapping with the sensor.

Proximity sensor power reduction

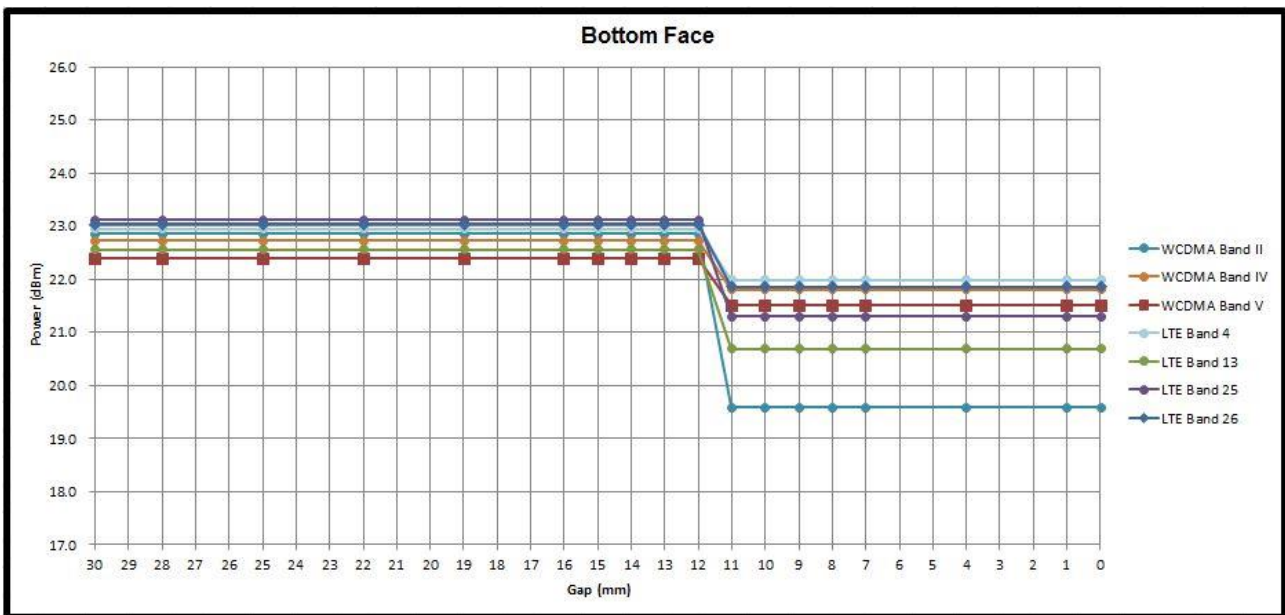
Exposure Position / wireless mode	Bottom Face ⁽¹⁾	Edge 1	Edge 2	Edge 3	Edge 4
WCDMA Band II	3.0 dB	0 dB	0 dB	0 dB	0 dB
WCDMA Band IV	1.0 dB	0 dB	0 dB	0 dB	0 dB
WCDMA Band V	1.0 dB	0 dB	0 dB	0 dB	0 dB
LTE Band 4	1.0 dB	0 dB	0 dB	0 dB	0 dB
LTE Band 13	2.0 dB	0 dB	0 dB	0 dB	0 dB
LTE Band 2 / 25	2.5 dB	0 dB	0 dB	0 dB	0 dB
LTE Band 5 / 26	1.0 dB	0 dB	0 dB	0 dB	0 dB

Remark:

- ⁽¹⁾: Reduced maximum limit applied by activation of proximity sensor.
- Power reduction is not applicable for WLAN and Bluetooth.
- Tests were performed in accordance with KDB 616217 D04 section 6.1, 6.2, 6.3, 6.4 and 6.5 and compliant results are shown and described in exhibit "P-Sensor operational description"
- For verification of compliance of power reduction scheme, additional SAR testing with EUT transmitting at full RF power at a conservative trigger distance was performed:
 - Bottom Face: [10 mm](#)

Power Measurement during Sensor Trigger distance testing

Band/Mode	Ch #	Measured power reduction (dBm)		Reduction Levels (dB)
		w/o power back-off	w/ power back-off	
WCDMA Band II	9400	22.86	19.58	3.28
WCDMA Band IV	1638	22.73	21.80	0.93
WCDMA Band V	4132	22.38	21.50	0.88
LTE Band 4	20050	22.95	21.98	0.97
LTE Band 13	23230	22.55	20.68	1.87
LTE Band 25	26590	23.11	21.29	1.82
LTE Band 26	26865	23.03	21.86	1.17





6. RF Exposure Limits

6.1 Uncontrolled Environment

Uncontrolled Environments are defined as locations where there is the exposure of individuals who have no knowledge or control of their exposure. The general population/uncontrolled exposure limits are applicable to situations in which the general public may be exposed or in which persons who are exposed as a consequence of their employment may not be made fully aware of the potential for exposure or cannot exercise control over their exposure. Members of the general public would come under this category when exposure is not employment-related; for example, in the case of a wireless transmitter that exposes persons in its vicinity.

6.2 Controlled Environment

Controlled Environments are defined as locations where there is exposure that may be incurred by persons who are aware of the potential for exposure, (i.e. as a result of employment or occupation). In general, occupational/controlled exposure limits are applicable to situations in which persons are exposed as a consequence of their employment, who have been made fully aware of the potential for exposure and can exercise control over their exposure. The exposure category is also applicable when the exposure is of a transient nature due to incidental passage through a location where the exposure levels may be higher than the general population/uncontrolled limits, but the exposed person is fully aware of the potential for exposure and can exercise control over his or her exposure by leaving the area or by some other appropriate means.

Limits for Occupational/Controlled Exposure (W/kg)

Table with 3 columns: Whole-Body, Partial-Body, Hands, Wrists, Feet and Ankles. Values: 0.4, 8.0, 20.0

Limits for General Population/Uncontrolled Exposure (W/kg)

Table with 3 columns: Whole-Body, Partial-Body, Hands, Wrists, Feet and Ankles. Values: 0.08, 1.6, 4.0

- 1. Whole-Body SAR is averaged over the entire body, partial-body SAR is averaged over any 1gram of tissue defined as a tissue volume in the shape of a cube. SAR for hands, wrists, feet and ankles is averaged over any 10 grams of tissue defined as a tissue volume in the shape of a cube.

7. Specific Absorption Rate (SAR)

7.1 Introduction

SAR is related to the rate at which energy is absorbed per unit mass in an object exposed to a radio field. The SAR distribution in a biological body is complicated and is usually carried out by experimental techniques or numerical modeling. The standard recommends limits for two tiers of groups, occupational/controlled and general population/uncontrolled, based on a person's awareness and ability to exercise control over his or her exposure. In general, occupational/controlled exposure limits are higher than the limits for general population/uncontrolled.

7.2 SAR Definition

The SAR definition is the time derivative (rate) of the incremental energy (dW) absorbed by (dissipated in) an incremental mass (dm) contained in a volume element (dv) of a given density (ρ). The equation description is as below:

$$SAR = \frac{d}{dt} \left(\frac{dW}{dm} \right) = \frac{d}{dt} \left(\frac{dW}{\rho dv} \right)$$

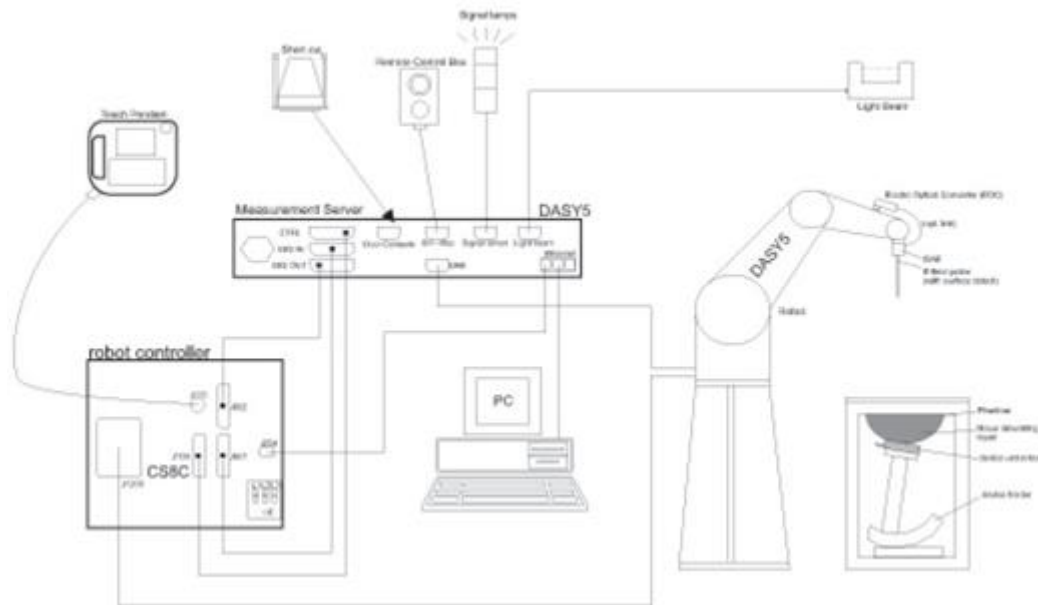
SAR is expressed in units of Watts per kilogram (W/kg)

$$SAR = \frac{\sigma |E|^2}{\rho}$$

Where: σ is the conductivity of the tissue, ρ is the mass density of the tissue and E is the RMS electrical field strength.

8. System Description and Setup

The DASY system used for performing compliance tests consists of the following items:




- A standard high precision 6-axis robot with controller, teach pendant and software. An arm extension for accommodating the data acquisition electronics (DAE).
- An isotropic Field probe optimized and calibrated for the targeted measurement.
- A data acquisition electronics (DAE) which performs the signal amplification, signal multiplexing, AD-conversion, offset measurements, mechanical surface detection, collision detection, etc. The unit is battery powered with standard or rechargeable batteries. The signal is optically transmitted to the EOC.
- The Electro-optical converter (EOC) performs the conversion from optical to electrical signals for the digital communication to the DAE. To use optical surface detection, a special version of the EOC is required. The EOC signal is transmitted to the measurement server.
- The function of the measurement server is to perform the time critical tasks such as signal filtering, control of the robot operation and fast movement interrupts.
- The Light Beam used is for probe alignment. This improves the (absolute) accuracy of the probe positioning.
- A computer running WinXP or Win7 and the DASY5 software.
- Remote control and teach pendant as well as additional circuitry for robot safety such as warning lamps, etc.
- The phantom, the device holder and other accessories according to the targeted measurement.


8.1 E-Field Probe

The SAR measurement is conducted with the dosimetric probe (manufactured by SPEAG).The probe is specially designed and calibrated for use in liquid with high permittivity. The dosimetric probe has special calibration in liquid at different frequency. This probe has a built in optical surface detection system to prevent from collision with phantom.

<ES3DV3 Probe>

Construction	Symmetric design with triangular core Interleaved sensors Built-in shielding against static charges PEEK enclosure material (resistant to organic solvents, e.g., DGBE)	
Frequency	10 MHz – 4 GHz; Linearity: ± 0.2 dB (30 MHz – 4 GHz)	
Directivity	± 0.2 dB in TSL (rotation around probe axis) ± 0.3 dB in TSL (rotation normal to probe axis)	
Dynamic Range	5 μ W/g – >100 mW/g; Linearity: ± 0.2 dB	
Dimensions	Overall length: 337 mm (tip: 20 mm) Tip diameter: 3.9 mm (body: 12 mm) Distance from probe tip to dipole centers: 3.0 mm	

<EX3DV4 Probe>

Construction	Symmetric design with triangular core Built-in shielding against static charges PEEK enclosure material (resistant to organic solvents, e.g., DGBE)	
Frequency	10 MHz – >6 GHz Linearity: ± 0.2 dB (30 MHz – 6 GHz)	
Directivity	± 0.3 dB in TSL (rotation around probe axis) ± 0.5 dB in TSL (rotation normal to probe axis)	
Dynamic Range	10 μ W/g – >100 mW/g Linearity: ± 0.2 dB (noise: typically <1 μ W/g)	
Dimensions	Overall length: 337 mm (tip: 20 mm) Tip diameter: 2.5 mm (body: 12 mm) Typical distance from probe tip to dipole centers: 1 mm	

8.2 Data Acquisition Electronics (DAE)

The data acquisition electronics (DAE) consists of a highly sensitive electrometer-grade preamplifier with auto-zeroing, a channel and gain-switching multiplexer, a fast 16 bit AD-converter and a command decoder and control logic unit. Transmission to the measurement server is accomplished through an optical downlink for data and status information as well as an optical uplink for commands and the clock.


The input impedance of the DAE is 200 MOhm; the inputs are symmetrical and floating. Common mode rejection is above 80 dB.



Fig 5.1 Photo of DAE

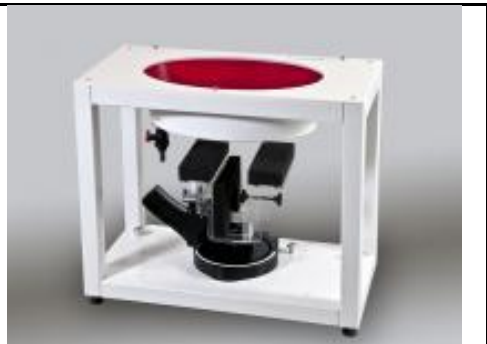
8.3 Phantom

<SAM Twin Phantom>

Shell Thickness	2 ± 0.2 mm; Center ear point: 6 ± 0.2 mm	
Filling Volume	Approx. 25 liters	
Dimensions	Length: 1000 mm; Width: 500 mm; Height: adjustable feet	
Measurement Areas	Left Hand, Right Hand, Flat Phantom	

The bottom plate contains three pair of bolts for locking the device holder. The device holder positions are adjusted to the standard measurement positions in the three sections. A white cover is provided to tap the phantom during off-periods to prevent water evaporation and changes in the liquid parameters. On the phantom top, three reference markers are provided to identify the phantom position with respect to the robot.

<ELI Phantom>

Shell Thickness	2 ± 0.2 mm (sagging: <1%)	
Filling Volume	Approx. 30 liters	
Dimensions	Major ellipse axis: 600 mm Minor axis: 400 mm	

The ELI phantom is intended for compliance testing of handheld and body-mounted wireless devices in the frequency range of 30 MHz to 6 GHz. ELI4 is fully compatible with standard and all known tissue simulating liquids.

8.4 Device Holder

<Mounting Device for Hand-Held Transmitter>

In combination with the Twin SAM V5.0/V5.0c or ELI phantoms, the Mounting Device for Hand-Held Transmitters enables rotation of the mounted transmitter device to specified spherical coordinates. At the heads, the rotation axis is at the ear opening. Transmitter devices can be easily and accurately positioned according to IEC 62209-1, IEEE 1528, FCC, or other specifications. The device holder can be locked for positioning at different phantom sections (left head, right head, flat). And upgrade kit to Mounting Device to enable easy mounting of wider devices like big smart-phones, e-books, small tablets, etc. It holds devices with width up to 140 mm.



Mounting Device for Hand-Held Transmitters



Mounting Device Adaptor for Wide-Phones

<Mounting Device for Laptops and other Body-Worn Transmitters>

The extension is lightweight and made of POM, acrylic glass and foam. It fits easily on the upper part of the mounting device in place of the phone positioned. The extension is fully compatible with the SAM Twin and ELI phantoms.



Mounting Device for Laptops

9. Measurement Procedures

The measurement procedures are as follows:

<Conducted power measurement>

- (a) For WWAN power measurement, use base station simulator to configure EUT WWAN transmission in conducted connection with RF cable, at maximum power in each supported wireless interface and frequency band.
- (b) Read the WWAN RF power level from the base station simulator.
- (c) For WLAN/BT power measurement, use engineering software to configure EUT WLAN/BT continuously transmission, at maximum RF power in each supported wireless interface and frequency band
- (d) Connect EUT RF port through RF cable to the power meter, and measure WLAN/BT output power

<SAR measurement>

- (a) Use base station simulator to configure EUT WWAN transmission in radiated connection, and engineering software to configure EUT WLAN/BT continuously transmission, at maximum RF power, in the highest power channel.
- (b) Place the EUT in the positions as Appendix D demonstrates.
- (c) Set scan area, grid size and other setting on the DASY software.
- (d) Measure SAR results for the highest power channel on each testing position.
- (e) Find out the largest SAR result on these testing positions of each band
- (f) Measure SAR results for other channels in worst SAR testing position if the reported SAR of highest power channel is larger than 0.8 W/kg

According to the test standard, the recommended procedure for assessing the peak spatial-average SAR value consists of the following steps:

- (a) Power reference measurement
- (b) Area scan
- (c) Zoom scan
- (d) Power drift measurement

9.1 Spatial Peak SAR Evaluation

The procedure for spatial peak SAR evaluation has been implemented according to the test standard. It can be conducted for 1g and 10g, as well as for user-specific masses. The DASY software includes all numerical procedures necessary to evaluate the spatial peak SAR value.

The base for the evaluation is a "cube" measurement. The measured volume must include the 1g and 10g cubes with the highest averaged SAR values. For that purpose, the center of the measured volume is aligned to the interpolated peak SAR value of a previously performed area scan.

The entire evaluation of the spatial peak values is performed within the post-processing engine (SEMCAD). The system always gives the maximum values for the 1g and 10g cubes. The algorithm to find the cube with highest averaged SAR is divided into the following stages:

- (a) Extraction of the measured data (grid and values) from the Zoom Scan
- (b) Calculation of the SAR value at every measurement point based on all stored data (A/D values and measurement parameters)
- (c) Generation of a high-resolution mesh within the measured volume
- (d) Interpolation of all measured values from the measurement grid to the high-resolution grid
- (e) Extrapolation of the entire 3-D field distribution to the phantom surface over the distance from sensor to surface
- (f) Calculation of the averaged SAR within masses of 1g and 10g

9.2 Power Reference Measurement

The Power Reference Measurement and Power Drift Measurements are for monitoring the power drift of the device under test in the batch process. The minimum distance of probe sensors to surface determines the closest measurement point to phantom surface. This distance cannot be smaller than the distance of sensor calibration points to probe tip as defined in the probe properties.

9.3 Area Scan

The area scan is used as a fast scan in two dimensions to find the area of high field values, before doing a fine measurement around the hot spot. The sophisticated interpolation routines implemented in DASY software can find the maximum found in the scanned area, within a range of the global maximum. The range (in dB0 is specified in the standards for compliance testing. For example, a 2 dB range is required in IEEE standard 1528 and IEC 62209 standards, whereby 3 dB is a requirement when compliance is assessed in accordance with the ARIB standard (Japan), if only one zoom scan follows the area scan, then only the absolute maximum will be taken as reference. For cases where multiple maximums are detected, the number of zoom scans has to be increased accordingly.

Area scan parameters extracted from FCC KDB 865664 D01v01r04 SAR measurement 100 MHz to 6 GHz.

	≤ 3 GHz	> 3 GHz
Maximum distance from closest measurement point (geometric center of probe sensors) to phantom surface	5 ± 1 mm	$\frac{1}{2} \cdot \delta \cdot \ln(2) \pm 0.5$ mm
Maximum probe angle from probe axis to phantom surface normal at the measurement location	30° ± 1°	20° ± 1°
Maximum area scan spatial resolution: $\Delta x_{Area}, \Delta y_{Area}$	≤ 2 GHz: ≤ 15 mm 2 – 3 GHz: ≤ 12 mm	3 – 4 GHz: ≤ 12 mm 4 – 6 GHz: ≤ 10 mm
	When the x or y dimension of the test device, in the measurement plane orientation, is smaller than the above, the measurement resolution must be ≤ the corresponding x or y dimension of the test device with at least one measurement point on the test device.	

9.4 Zoom Scan

Zoom scans are used assess the peak spatial SAR values within a cubic averaging volume containing 1 gram and 10 gram of simulated tissue. The zoom scan measures points (refer to table below) within a cube shoes base faces are centered on the maxima found in a preceding area scan job within the same procedure. When the measurement is done, the zoom scan evaluates the averaged SAR for 1 gram and 10 gram and displays these values next to the job's label.

Zoom scan parameters extracted from FCC KDB 865664 D01v01r04 SAR measurement 100 MHz to 6 GHz.

		≤ 3 GHz	> 3 GHz	
Maximum zoom scan spatial resolution: $\Delta x_{Zoom}, \Delta y_{Zoom}$		≤ 2 GHz: ≤ 8 mm 2 – 3 GHz: ≤ 5 mm*	3 – 4 GHz: ≤ 5 mm* 4 – 6 GHz: ≤ 4 mm*	
Maximum zoom scan spatial resolution, normal to phantom surface	uniform grid: $\Delta z_{Zoom}(n)$	≤ 5 mm	3 – 4 GHz: ≤ 4 mm 4 – 5 GHz: ≤ 3 mm 5 – 6 GHz: ≤ 2 mm	
	graded grid	$\Delta z_{Zoom}(1)$: between 1 st two points closest to phantom surface	≤ 4 mm	3 – 4 GHz: ≤ 3 mm 4 – 5 GHz: ≤ 2.5 mm 5 – 6 GHz: ≤ 2 mm
		$\Delta z_{Zoom}(n>1)$: between subsequent points	$\leq 1.5 \cdot \Delta z_{Zoom}(n-1)$	
Minimum zoom scan volume	x, y, z	≥ 30 mm	3 – 4 GHz: ≥ 28 mm 4 – 5 GHz: ≥ 25 mm 5 – 6 GHz: ≥ 22 mm	
Note: δ is the penetration depth of a plane-wave at normal incidence to the tissue medium; see draft standard IEEE P1528-2011 for details. * When zoom scan is required and the <i>reported</i> SAR from the <i>area scan based 1-g SAR estimation</i> procedures of KDB 447498 is ≤ 1.4 W/kg, ≤ 8 mm, ≤ 7 mm and ≤ 5 mm zoom scan resolution may be applied, respectively, for 2 GHz to 3 GHz, 3 GHz to 4 GHz and 4 GHz to 6 GHz.				

9.5 Volume Scan Procedures

The volume scan is used for assess overlapping SAR distributions for antennas transmitting in different frequency bands. It is equivalent to an oversized zoom scan used in standalone measurements. The measurement volume will be used to enclose all the simultaneous transmitting antennas. For antennas transmitting simultaneously in different frequency bands, the volume scan is measured separately in each frequency band. In order to sum correctly to compute the 1g aggregate SAR, the EUT remain in the same test position for all measurements and all volume scan use the same spatial resolution and grid spacing. When all volume scan were completed, the software, SEMCAD postprocessor can combine and subsequently superpose these measurement data to calculating the multiband SAR.

9.6 Power Drift Monitoring

All SAR testing is under the EUT install full charged battery and transmit maximum output power. In DASy measurement software, the power reference measurement and power drift measurement procedures are used for monitoring the power drift of EUT during SAR test. Both these procedures measure the field at a specified reference position before and after the SAR testing. The software will calculate the field difference in dB. If the power drifts more than 5%, the SAR will be retested.



10. Test Equipment List

Manufacturer	Name of Equipment	Type/Model	Serial Number	Calibration	
				Last Cal.	Due Date
SPEAG	750MHz System Validation Kit	D750V3	1012	May. 22, 2017	May. 21, 2018
SPEAG	835MHz System Validation Kit	D835V2	499	Mar. 21, 2017	Mar. 20, 2018
SPEAG	1750MHz System Validation Kit	D1750V2	1068	Nov. 15, 2017	Nov. 14, 2018
SPEAG	1900MHz System Validation Kit	D1900V2	5d041	Sep. 28, 2017	Sep. 27, 2018
SPEAG	2600MHz System Validation Kit	D2600V2	1008	Sep. 18, 2017	Sep. 17, 2018
SPEAG	Data Acquisition Electronics	DAE3	393	Aug. 10, 2017	Aug. 09, 2018
SPEAG	Dosimetric E-Field Probe	EX3DV4	3578	May. 05, 2017	May. 04, 2018
Gecom	Thermometer	TE1	TM685-1	Mar. 21, 2017	Mar. 20, 2018
Anritsu	Radio Communication Analyzer	MT8821C	6201341950	Apr. 20, 2017	Apr. 19, 2018
Agilent	Wireless Communication Test Set	E5515C	MY50266977	May. 30, 2017	May. 29, 2018
SPEAG	Device Holder	N/A	N/A	N/A	N/A
Anritsu	Signal Generator	MG3710A	6201502524	Dec. 07, 2017	Dec. 06, 2018
Agilent	ENA Network Analyzer	E5071C	MY46316648	Jan. 17, 2018	Jan. 16, 2019
SPEAG	Dielectric Probe Kit	DAK-3.5	1126	Sep. 26, 2017	Sep. 25, 2018
LINE SEIKI	Digital Thermometer	LKMelectronic	DTM3000SPEZIAL	Sep. 06, 2017	Sep. 05, 2018
Anritsu	Power Meter	ML2495A	1419002	May. 15, 2017	May. 14, 2018
Anritsu	Power Sensor	MA2411B	1339124	May. 15, 2017	May. 14, 2018
Anritsu	Power Meter	ML2495A	1218006	Oct. 06, 2017	Oct. 05, 2018
Anritsu	Power Sensor	MA2411B	1207363	Oct. 06, 2017	Oct. 05, 2018
Agilent	Spectrum Analyzer	E4408B	MY44211028	Aug. 23, 2017	Aug. 22, 2018
Anritsu	Spectrum Analyzer	MS2830A	6201396378	Jun. 26, 2017	Jun. 25, 2018
Mini-Circuits	Power Amplifier	ZVE-8G+	D120604	Mar. 09, 2017	Mar. 08, 2018
Mini-Circuits	Power Amplifier	ZHL-42W+	QA1344002	Mar. 09, 2017	Mar. 08, 2018
ATM	Dual Directional Coupler	C122H-10	P610410z-02	Note 1	
Woken	Attenuator 1	WK0602-XX	N/A	Note 1	
PE	Attenuator 2	PE7005-10	N/A	Note 1	
PE	Attenuator 3	PE7005- 3	N/A	Note 1	

General Note:

1. Prior to system verification and validation, the path loss from the signal generator to the system check source and the power meter, which includes the amplifier, cable, attenuator and directional coupler, was measured by the network analyzer. The reading of the power meter was offset by the path loss difference between the path to the power meter and the path to the system check source to monitor the actual power level fed to the system check source.

11. System Verification

11.1 Tissue Simulating Liquids

For the measurement of the field distribution inside the SAM phantom with DASY, the phantom must be filled with around 25 liters of homogeneous body tissue simulating liquid. For head SAR testing, the liquid height from the ear reference point (ERP) of the phantom to the liquid top surface is larger than 15 cm, which is shown in Fig. 10.1. For body SAR testing, the liquid height from the center of the flat phantom to the liquid top surface is larger than 15 cm, which is shown in Fig. 10.2.

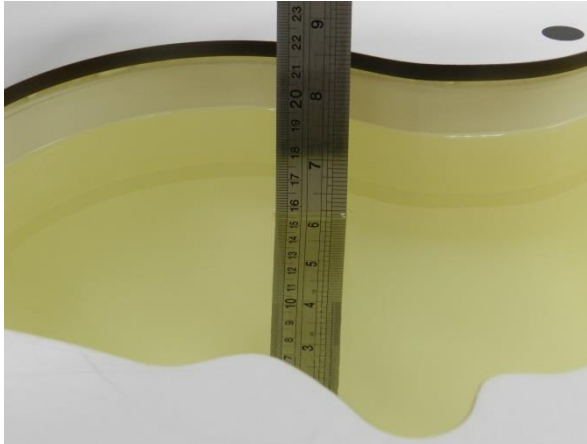


Fig 10.1 Photo of Liquid Height for Head SAR

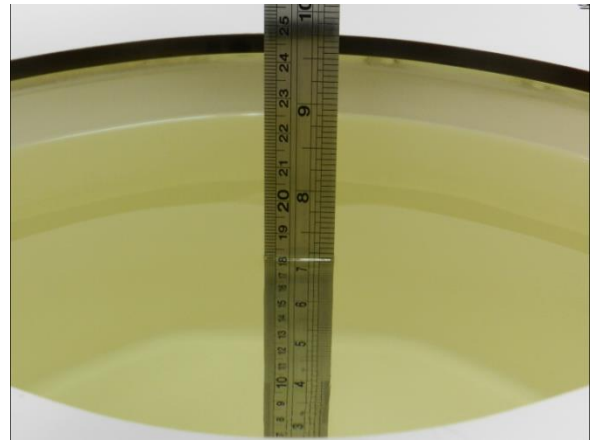


Fig 10.2 Photo of Liquid Height for Body SAR



11.2 Tissue Verification

The following tissue formulations are provided for reference only as some of the parameters have not been thoroughly verified. The composition of ingredients may be modified accordingly to achieve the desired target tissue parameters required for routine SAR evaluation.

Frequency (MHz)	Water (%)	Sugar (%)	Cellulose (%)	Salt (%)	Preventol (%)	DGBE (%)	Conductivity (σ)	Permittivity (ε _r)
For Head								
750	41.1	57.0	0.2	1.4	0.2	0	0.89	41.9
835	40.3	57.9	0.2	1.4	0.2	0	0.90	41.5
900	40.3	57.9	0.2	1.4	0.2	0	0.97	41.5
1800, 1900, 2000	55.2	0	0	0.3	0	44.5	1.40	40.0
2450	55.0	0	0	0	0	45.0	1.80	39.2
2600	54.8	0	0	0.1	0	45.1	1.96	39.0
For Body								
750	51.7	47.2	0	0.9	0.1	0	0.96	55.5
835	50.8	48.2	0	0.9	0.1	0	0.97	55.2
900	50.8	48.2	0	0.9	0.1	0	1.05	55.0
1800, 1900, 2000	70.2	0	0	0.4	0	29.4	1.52	53.3
2450	68.6	0	0	0	0	31.4	1.95	52.7
2600	68.1	0	0	0.1	0	31.8	2.16	52.5

Simulating Liquid for 5GHz, Manufactured by SPEAG

Ingredients	(% by weight)
Water	64~78%
Mineral oil	11~18%
Emulsifiers	9~15%
Additives and Salt	2~3%

<Tissue Dielectric Parameter Check Results>

Frequency (MHz)	Tissue Type	Liquid Temp. (°C)	Conductivity (σ)	Permittivity (ε _r)	Conductivity Target (σ)	Permittivity Target (ε _r)	Delta (σ) (%)	Delta (ε _r) (%)	Limit (%)	Date
750	MSL	22.5	0.967	53.678	0.96	55.50	0.73	-3.28	±5	2018/1/27
835	MSL	22.5	0.964	56.895	0.97	55.20	-0.62	3.07	±5	2018/1/27
1750	MSL	22.5	1.447	54.404	1.49	53.40	-2.89	1.88	±5	2018/1/27
1900	MSL	22.5	1.564	52.097	1.52	53.30	2.89	-2.26	±5	2018/1/27
2600	MSL	22.6	2.229	53.094	2.16	52.50	3.19	1.13	±5	2018/1/28

11.3 System Performance Check Results

Comparing to the original SAR value provided by SPEAG, the verification data should be within its specification of 10 %. Below table shows the target SAR and measured SAR after normalized to 1W input power. The table below indicates the system performance check can meet the variation criterion and the plots can be referred to Appendix A of this report.

Date	Frequency (MHz)	Tissue Type	Input Power (mW)	Dipole S/N	Probe S/N	DAE S/N	Measured 1g SAR (W/kg)	Targeted 1g SAR (W/kg)	Normalized 1g SAR (W/kg)	Deviation (%)
2018/1/27	750	MSL	250	D750V3-1012	EX3DV4 - SN3578	DAE3 Sn393	2.28	8.71	9.12	4.71
2018/1/27	835	MSL	250	D835V2-499	EX3DV4 - SN3578	DAE3 Sn393	2.48	9.67	9.92	2.59
2018/1/27	1750	MSL	250	D1750V2-1068	EX3DV4 - SN3578	DAE3 Sn393	9.19	37.20	36.76	-1.18
2018/1/27	1900	MSL	250	D1900V2-5d041	EX3DV4 - SN3578	DAE3 Sn393	10.30	40.70	41.20	1.23
2018/1/28	2600	MSL	250	D2600V2-1008	EX3DV4 - SN3578	DAE3 Sn393	13.80	55.00	55.20	0.36

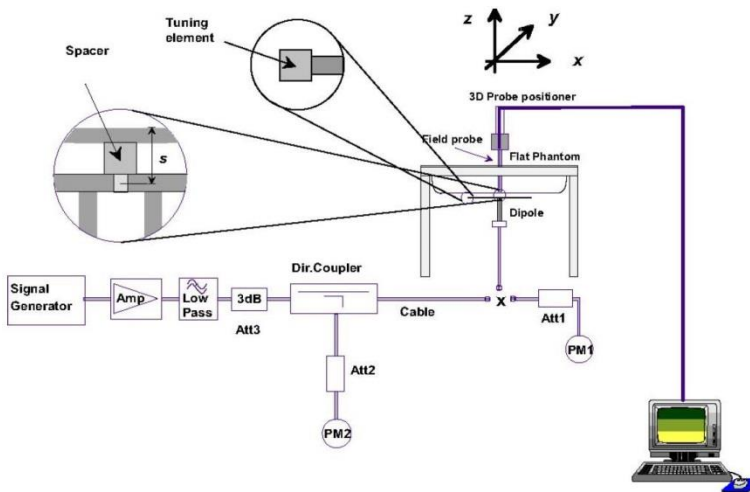


Fig 8.3.1 System Performance Check Setup



Fig 8.3.2 Setup Photo

12. RF Exposure Positions

12.1 SAR Testing for Tablet

This device can be used also in full sized tablet exposure conditions, due to its size. Per FCC KDB 616217, the back surface and edges of the tablet should be tested for SAR compliance with the tablet touching the phantom. The SAR exclusion threshold in KDB 447498 D01v06 can be applied to determine SAR test exclusion for adjacent edge configurations. The closest distance from the antenna to an adjacent tablet edge is used to determine if SAR testing is required for the adjacent edges, with the adjacent edge positioned against the phantom and the edge containing the antenna positioned perpendicular to the phantom.

13. Conducted RF Output Power (Unit: dBm)

<WCDMA Conducted Power>

1. The following tests were conducted according to the test requirements outlines in 3GPP TS 34.121 specification.
2. The procedures in KDB 941225 D01v03r01 are applied for 3GPP Rel. 6 HSPA to configure the device in the required sub-test mode(s) to determine SAR test exclusion.
3. For DC-HSDPA, the device was configured according to the H-Set 12, Fixed Reference Channel (FRC) configuration in Table C.8.1.12 of 3GPP TS 34.121-1, with the primary and the secondary serving HS-DSCH Cell enabled during the power measurement.

A summary of these settings are illustrated below:

HSDPA Setup Configuration:

- a. The EUT was connected to Base Station Agilent E5515C referred to the Setup Configuration.
- b. The RF path losses were compensated into the measurements.
- c. A call was established between EUT and Base Station with following setting:
 - i. Set Gain Factors (β_c and β_d) and parameters were set according to each
 - ii. Specific sub-test in the following table, C10.1.4, quoted from the TS 34.121
 - iii. Set RMC 12.2Kbps + HSDPA mode.
 - iv. Set Cell Power = -86 dBm
 - v. Set HS-DSCH Configuration Type to FRC (H-set 1, QPSK)
 - vi. Select HSDPA Uplink Parameters
 - vii. Set Delta ACK, Delta NACK and Delta CQI = 8
 - viii. Set Ack-Nack Repetition Factor to 3
 - ix. Set CQI Feedback Cycle (k) to 4 ms
 - x. Set CQI Repetition Factor to 2
 - xi. Power Ctrl Mode = All Up bits
- d. The transmitted maximum output power was recorded.

Table C.10.1.4: β values for transmitter characteristics tests with HS-DPCCH

Sub-test	β_c	β_d	β_d (SF)	β_c/β_d	β_{HS} (Note 1, Note 2)	CM (dB) (Note 3)	MPR (dB) (Note 3)
1	2/15	15/15	64	2/15	4/15	0.0	0.0
2	12/15 (Note 4)	15/15 (Note 4)	64	12/15 (Note 4)	24/15	1.0	0.0
3	15/15	8/15	64	15/8	30/15	1.5	0.5
4	15/15	4/15	64	15/4	30/15	1.5	0.5

Note 1: $\Delta_{ACK}, \Delta_{NACK}$ and $\Delta_{CQI} = 30/15$ with $\beta_{HS} = 30/15 * \beta_c$.

Note 2: For the HS-DPCCH power mask requirement test in clause 5.2C, 5.7A, and the Error Vector Magnitude (EVM) with HS-DPCCH test in clause 5.13.1A, and HSDPA EVM with phase discontinuity in clause 5.13.1AA, Δ_{ACK} and $\Delta_{NACK} = 30/15$ with $\beta_{HS} = 30/15 * \beta_c$, and $\Delta_{CQI} = 24/15$ with $\beta_{HS} = 24/15 * \beta_c$.

Note 3: CM = 1 for $\beta_c/\beta_d = 12/15, \beta_{HS}/\beta_c = 24/15$. For all other combinations of DPDCCH, DPCCH and HS-DPCCH the MPR is based on the relative CM difference. This is applicable for only UEs that support HSDPA in release 6 and later releases.

Note 4: For subtest 2 the β_c/β_d ratio of 12/15 for the TFC during the measurement period (TF1, TF0) is achieved by setting the signalled gain factors for the reference TFC (TF1, TF1) to $\beta_c = 11/15$ and $\beta_d = 15/15$.

Setup Configuration

HSUPA Setup Configuration:

- a. The EUT was connected to Base Station Agilent E5515C referred to the Setup Configuration.
- b. The RF path losses were compensated into the measurements.
- c. A call was established between EUT and Base Station with following setting * :
 - i. Call Configs = 5.2B, 5.9B, 5.10B, and 5.13.2B with QPSK
 - ii. Set the Gain Factors (β_c and β_d) and parameters (AG Index) were set according to each specific sub-test in the following table, C11.1.3, quoted from the TS 34.121
 - iii. Set Cell Power = -86 dBm
 - iv. Set Channel Type = 12.2k + HSPA
 - v. Set UE Target Power
 - vi. Power Ctrl Mode= Alternating bits
 - vii. Set and observe the E-TFCl
 - viii. Confirm that E-TFCl is equal to the target E-TFCl of 75 for sub-test 1, and other subtest's E-TFCl
- d. The transmitted maximum output power was recorded.

Table C.11.1.3: β values for transmitter characteristics tests with HS-DPCCH and E-DCH

Sub-test	β_c	β_d	β_d (SF)	β_c/β_d	β_{HS} (Note1)	β_{ec}	β_{ed} (Note 4) (Note 5)	β_{ed} (SF)	β_{ed} (Codes)	CM (dB) (Note 2)	MPR (dB) (Note 2) (Note 6)	AG Index (Note 5)	E-TFCl
1	11/15 (Note 3)	15/15 (Note 3)	64	11/15 (Note 3)	22/15	209/25	1309/225	4	1	1.0	0.0	20	75
2	6/15	15/15	64	6/15	12/15	12/15	94/75	4	1	3.0	2.0	12	67
3	15/15	9/15	64	15/9	30/15	30/15	$\beta_{ed1}: 47/15$ $\beta_{ed2}: 47/15$	4	2	2.0	1.0	15	92
4	2/15	15/15	64	2/15	4/15	2/15	56/75	4	1	3.0	2.0	17	71
5	15/15	0	-	-	5/15	5/15	47/15	4	1	1.0	0.0	12	67

Note 1: For sub-test 1 to 4, Δ_{ACK} , Δ_{NACK} and $\Delta_{CQI} = 30/15$ with $\beta_{hs} = 30/15 * \beta_c$. For sub-test 5, Δ_{ACK} , Δ_{NACK} and $\Delta_{CQI} = 5/15$ with $\beta_{hs} = 5/15 * \beta_c$.

Note 2: CM = 1 for $\beta_c/\beta_d = 12/15$, $\beta_{hs}/\beta_c = 24/15$. For all other combinations of DPDCH, DPCCH, HS-DPCCH, E-DPDCH and E-DPCCH the MPR is based on the relative CM difference.

Note 3: For subtest 1 the β_c/β_d ratio of 11/15 for the TFC during the measurement period (TF1, TF0) is achieved by setting the signalled gain factors for the reference TFC (TF1, TF1) to $\beta_c = 10/15$ and $\beta_d = 15/15$.

Note 4: In case of testing by UE using E-DPDCH Physical Layer category 1, Sub-test 3 is omitted according to TS25.306 Table 5.1g.

Note 5: β_{ed} can not be set directly; it is set by Absolute Grant Value.

Note 6: For subtests 2, 3 and 4, UE may perform E-DPDCH power scaling at max power which could results in slightly smaller MPR values.

Setup Configuration

DC-HSDPA 3GPP release 8 Setup Configuration:

- a. The EUT was connected to Base Station Agilent E5515C referred to the Setup Configuration below
- b. The RF path losses were compensated into the measurements.
- c. A call was established between EUT and Base Station with following setting:
 - i. Set RMC 12.2Kbps + HSDPA mode.
 - ii. Set Cell Power = -25 dBm
 - iii. Set HS-DSCH Configuration Type to FRC (H-set 12, QPSK)
 - iv. Select HSDPA Uplink Parameters
 - v. Set Gain Factors (β_c and β_d) and parameters were set according to each Specific sub-test in the following table, C10.1.4, quoted from the TS 34.121
 - a). Subtest 1: $\beta_c/\beta_d=2/15$
 - b). Subtest 2: $\beta_c/\beta_d=12/15$
 - c). Subtest 3: $\beta_c/\beta_d=15/8$
 - d). Subtest 4: $\beta_c/\beta_d=15/4$
 - vi. Set Delta ACK, Delta NACK and Delta CQI = 8
 - vii. Set Ack-Nack Repetition Factor to 3
 - viii. Set CQI Feedback Cycle (k) to 4 ms
 - ix. Set CQI Repetition Factor to 2
 - x. Power Ctrl Mode = All Up bits
- d. The transmitted maximum output power was recorded.

The following tests were conducted according to the test requirements outlines in 3GPP TS 34.121 specification. A summary of these settings are illustrated below:

C.8.1.12 Fixed Reference Channel Definition H-Set 12

Table C.8.1.12: Fixed Reference Channel H-Set 12

Parameter	Unit	Value
Nominal Avg. Inf. Bit Rate	kbps	60
Inter-TTI Distance	TTI's	1
Number of HARQ Processes	Processes	6
Information Bit Payload (N_{INF})	Bits	120
Number Code Blocks	Blocks	1
Binary Channel Bits Per TTI	Bits	960
Total Available SML's in UE	SML's	19200
Number of SML's per HARQ Proc.	SML's	3200
Coding Rate		0.15
Number of Physical Channel Codes	Codes	1
Modulation		QPSK
Note 1: The RMC is intended to be used for DC-HSDPA mode and both cells shall transmit with identical parameters as listed in the table. Note 2: Maximum number of transmission is limited to 1, i.e., retransmission is not allowed. The redundancy and constellation version 0 shall be used.		

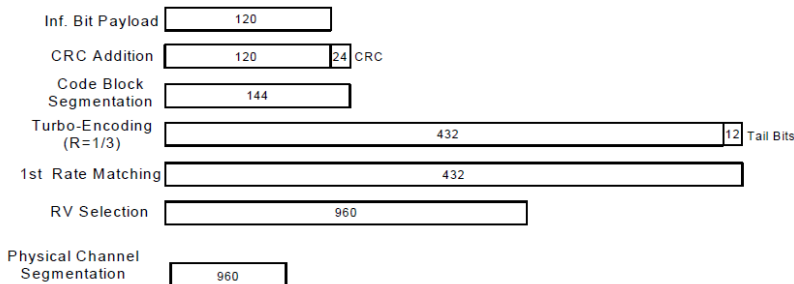


Figure C.8.19: Coding rate for Fixed reference Channel H-Set 12 (QPSK)

Setup Configuration



<WCDMA Conducted Power>

General Note:

- Per KDB 941225 D01v03r01, for SAR testing is measured using a 12.2 kbps RMC with TPC bits configured to all "1's".
- Per KDB 941225 D01v03r01, RMC 12.2kbps setting is used to evaluate SAR. The maximum output power and tune-up tolerance specified for production units in HSDPA / HSUPA / DC-HSDPA is $\leq \frac{1}{4}$ dB higher than RMC 12.2Kbps or when the highest reported SAR of the RMC12.2Kbps is scaled by the ratio of specified maximum output power and tune-up tolerance of HSDPA / HSUPA / DC-HSDPA to RMC12.2Kbps and the adjusted SAR is ≤ 1.2 W/kg, SAR measurement is not required for HSDPA / HSUPA / DC-HSDPA, and according to the following RF output power, the output power results of the secondary modes (HSUPA, HSDPA, DC-HSDPA) are less than $\frac{1}{4}$ dB higher than the primary modes; therefore, SAR measurement is not required for HSDPA / HSUPA / DC-HSDPA.

<Default Power Mode>

Band		WCDMA II			Tune-up Limit (dBm)	WCDMA IV			Tune-up Limit (dBm)	WCDMA V			Tune-up Limit (dBm)
TX Channel		9262	9400	9538		1312	1413	1513		4132	4182	4233	
Rx Channel		9662	9800	9938	1537	1638	1738	4357	4407	4458			
Frequency (MHz)		1852.4	1880	1907.6	1712.4	1732.6	1752.6	826.4	836.4	846.6			
3GPP Rel 99	RMC 12.2Kbps	22.75	22.86	22.57	24.00	22.60	22.73	22.69	24.00	22.38	22.25	22.28	24.00
3GPP Rel 6	HSDPA Subtest-1	22.22	22.23	22.14	24.00	22.15	22.12	22.20	24.00	22.06	22.14	22.33	24.00
3GPP Rel 6	HSDPA Subtest-2	22.01	22.04	22.09	24.00	22.07	22.11	22.31	24.00	22.10	22.18	22.14	24.00
3GPP Rel 6	HSDPA Subtest-3	21.71	21.55	21.62	23.50	21.60	21.59	21.72	23.50	21.43	21.72	21.66	23.50
3GPP Rel 6	HSDPA Subtest-4	21.63	21.59	21.52	23.50	21.71	22.09	21.66	23.50	21.52	21.54	21.76	23.50
3GPP Rel 8	DC-HSDPA Subtest-1	22.17	22.20	22.10	24.00	22.04	22.07	22.34	24.00	21.99	22.09	22.31	24.00
3GPP Rel 8	DC-HSDPA Subtest-2	22.03	22.09	22.08	24.00	22.13	22.06	22.17	24.00	22.10	22.03	22.09	24.00
3GPP Rel 8	DC-HSDPA Subtest-3	21.50	21.55	21.58	23.50	21.55	21.62	21.72	23.50	21.43	21.47	21.54	23.50
3GPP Rel 8	DC-HSDPA Subtest-4	21.54	21.60	21.53	23.50	21.51	21.53	21.66	23.50	21.45	21.57	21.59	23.50
3GPP Rel 6	HSUPA Subtest-1	22.17	22.33	22.21	24.00	22.04	22.07	22.17	24.00	22.03	22.18	22.23	24.00
3GPP Rel 6	HSUPA Subtest-2	20.68	20.87	20.70	22.00	20.68	20.70	20.83	22.00	20.41	20.54	20.66	22.00
3GPP Rel 6	HSUPA Subtest-3	21.14	21.19	21.11	23.00	21.16	21.01	21.25	23.00	21.06	21.01	21.16	23.00
3GPP Rel 6	HSUPA Subtest-4	21.71	21.53	21.73	22.00	21.41	21.56	21.66	22.00	21.36	21.30	21.35	22.00
3GPP Rel 6	HSUPA Subtest-5	22.16	22.24	22.05	24.00	22.05	22.11	22.22	24.00	22.00	22.10	22.19	24.00

<Reduced Power Mode>

Band		WCDMA II			Tune-up Limit (dBm)	WCDMA IV			Tune-up Limit (dBm)	WCDMA V			Tune-up Limit (dBm)
TX Channel		9262	9400	9538		1312	1413	1513		4132	4182	4233	
Rx Channel		9662	9800	9938	1537	1638	1738	4357	4407	4458			
Frequency (MHz)		1852.4	1880	1907.6	1712.4	1732.6	1752.6	826.4	836.4	846.6			
3GPP Rel 99	RMC 12.2Kbps	19.55	19.58	19.54	21.00	21.71	21.80	21.74	23.00	21.52	21.43	21.45	23.00
3GPP Rel 6	HSDPA Subtest-1	18.72	18.75	18.61	20.00	21.26	21.19	21.25	23.00	21.20	21.32	21.50	23.00
3GPP Rel 6	HSDPA Subtest-2	18.51	18.56	18.56	20.00	21.18	21.18	21.36	23.00	21.24	21.36	21.31	23.00
3GPP Rel 6	HSDPA Subtest-3	18.21	18.07	18.09	19.50	20.71	20.66	20.77	22.50	20.57	20.90	20.83	22.50
3GPP Rel 6	HSDPA Subtest-4	18.13	18.11	18.01	19.50	20.82	21.16	20.71	22.50	20.66	20.72	20.93	22.50
3GPP Rel 8	DC-HSDPA Subtest-1	18.67	18.72	18.57	20.00	21.15	21.14	21.39	22.00	21.13	21.27	21.48	22.00
3GPP Rel 8	DC-HSDPA Subtest-2	18.53	18.61	18.55	20.00	21.24	21.13	21.22	22.00	21.24	21.21	21.26	22.00
3GPP Rel 8	DC-HSDPA Subtest-3	18.00	18.07	18.05	19.50	20.66	20.69	20.77	21.50	20.57	20.65	20.71	21.50
3GPP Rel 8	DC-HSDPA Subtest-4	18.04	18.12	18.00	19.50	20.62	20.60	20.71	21.50	20.59	20.75	20.76	21.50
3GPP Rel 6	HSUPA Subtest-1	18.67	18.85	18.68	20.00	21.15	21.14	21.22	22.00	21.17	21.36	21.40	22.00
3GPP Rel 6	HSUPA Subtest-2	17.18	17.39	17.17	19.00	19.79	19.77	19.88	20.00	19.55	19.72	19.83	20.00
3GPP Rel 6	HSUPA Subtest-3	17.64	17.71	17.58	19.00	20.27	20.08	20.30	21.00	20.20	20.19	20.33	21.00
3GPP Rel 6	HSUPA Subtest-4	18.21	18.05	18.20	19.00	20.52	20.63	20.71	20.00	20.50	20.48	20.52	20.00
3GPP Rel 6	HSUPA Subtest-5	18.66	18.76	18.52	20.00	21.16	21.18	21.27	22.00	21.14	21.28	21.36	22.00

**<LTE Conducted Power>****General Note:**

1. Anritsu MT8820C base station simulator was used to setup the connection with EUT; the frequency band, channel bandwidth, RB allocation configuration, modulation type are set in the base station simulator to configure EUT transmitting at maximum power and at different configurations which are requested to be reported to FCC, for conducted power measurement and SAR testing.
2. Per KDB 941225 D05v02r05, when a properly configured base station simulator is used for the SAR and power measurements, spectrum plots for each RB allocation and offset configuration is not required.
3. Per KDB 941225 D05v02r05, start with the largest channel bandwidth and measure SAR for QPSK with 1 RB allocation, using the RB offset and required test channel combination with the highest maximum output power for RB offsets at the upper edge, middle and lower edge of each required test channel.
4. Per KDB 941225 D05v02r05, 50% RB allocation for QPSK SAR testing follows 1RB QPSK allocation procedure.
5. Per KDB 941225 D05v02r05, For QPSK with 100% RB allocation, SAR is not required when the highest maximum output power for 100 % RB allocation is less than the highest maximum output power in 50% and 1 RB allocations and the highest reported SAR for 1 RB and 50% RB allocation are ≤ 0.8 W/kg. Otherwise, SAR is measured for the highest output power channel; and if the reported SAR is > 1.45 W/kg, the remaining required test channels must also be tested.
6. Per KDB 941225 D05v02r05, 16QAM output power for each RB allocation configuration is $>$ not $\frac{1}{2}$ dB higher than the same configuration in QPSK and the reported SAR for the QPSK configuration is ≤ 1.45 W/kg; Per KDB 941225 D05v02r05, 16QAM SAR testing is not required.
7. Per KDB 941225 D05v02r05, Smaller bandwidth output power for each RB allocation configuration is $>$ not $\frac{1}{2}$ dB higher than the same configuration in the largest supported bandwidth, and the reported SAR for the largest supported bandwidth is ≤ 1.45 W/kg; Per KDB 941225 D05v02r05, smaller bandwidth SAR testing is not required.
8. For LTE B12 / B26 / B4 the maximum bandwidth does not support three non-overlapping channels, per KDB 941225 D05v02r05, when a device supports overlapping channel assignment in a channel bandwidth configuration, the middle channel of the group of overlapping channels should be selected for testing.
9. LTE band 2 / 5 SAR test was covered by Band 25 / 26; according to April 2015 TCB workshop, SAR test for overlapping LTE bands can be reduced if
 - a. the maximum output power, including tolerance, for the smaller band is \leq the larger band to qualify for the SAR test exclusion
 - b. the channel bandwidth and other operating parameters for the smaller band are fully supported by the larger band



Default Power Mode

<LTE Band 2>

BW [MHz]	Modulation	RB Size	RB Offset	Power Low Ch. / Freq.	Power Middle Ch. / Freq.	Power High Ch. / Freq.	Tune-up limit (dBm)	MPR (dB)
Channel				18700	18900	19100		
Frequency (MHz)				1860	1880	1900		
20	QPSK	1	0	22.97	22.84	22.91	24	0
20	QPSK	1	49	22.61	22.72	22.63		
20	QPSK	1	99	22.64	22.57	22.48		
20	QPSK	50	0	21.79	21.77	21.73	23	1
20	QPSK	50	24	21.67	21.78	21.73		
20	QPSK	50	50	21.68	21.71	21.60		
20	QPSK	100	0	21.73	21.70	21.65		
20	16QAM	1	0	22.13	22.06	22.10	23	1
20	16QAM	1	49	21.93	21.91	21.81		
20	16QAM	1	99	21.86	21.74	21.80		
20	16QAM	50	0	20.63	20.72	20.75	22	2
20	16QAM	50	24	20.66	20.82	20.71		
20	16QAM	50	50	20.61	20.69	20.60		
20	16QAM	100	0	20.72	20.76	20.70		
Channel				18675	18900	19125	Tune-up limit (dBm)	MPR (dB)
Frequency (MHz)				1857.5	1880	1902.5		
15	QPSK	1	0	22.85	22.78	22.69	24	0
15	QPSK	1	37	22.54	22.72	22.46		
15	QPSK	1	74	22.65	22.75	22.58		
15	QPSK	36	0	21.77	21.75	21.68	23	1
15	QPSK	36	20	21.72	21.83	21.73		
15	QPSK	36	39	21.63	21.77	21.69		
15	QPSK	75	0	21.77	21.78	21.71		
15	16QAM	1	0	22.02	22.11	21.91	23	1
15	16QAM	1	37	21.98	22.06	21.87		
15	16QAM	1	74	21.84	21.99	21.87		
15	16QAM	36	0	20.74	20.70	20.60	22	2
15	16QAM	36	20	20.60	20.77	20.66		
15	16QAM	36	39	20.57	20.75	20.65		
15	16QAM	75	0	20.73	20.78	20.71		
Channel				18650	18900	19150	Tune-up limit (dBm)	MPR (dB)
Frequency (MHz)				1855	1880	1905		
10	QPSK	1	0	22.89	22.94	22.86	24	0
10	QPSK	1	25	22.91	22.93	22.63		
10	QPSK	1	49	22.92	22.80	22.71		
10	QPSK	25	0	21.76	21.87	21.71	23	1
10	QPSK	25	12	21.80	21.86	21.74		
10	QPSK	25	25	21.73	21.88	21.58		
10	QPSK	50	0	21.80	21.81	21.65		
10	16QAM	1	0	22.25	22.09	22.08	23	1
10	16QAM	1	25	22.12	22.12	21.84		
10	16QAM	1	49	21.98	22.13	21.94		
10	16QAM	25	0	20.76	20.83	20.69	22	2
10	16QAM	25	12	20.75	20.87	20.73		
10	16QAM	25	25	20.73	20.83	20.56		
10	16QAM	50	0	20.79	20.82	20.61		



Channel				18625	18900	19175	Tune-up limit (dBm)	MPR (dB)
Frequency (MHz)				1852.5	1880	1907.5		
5	QPSK	1	0	22.88	22.94	22.71	24	0
5	QPSK	1	12	22.85	22.85	22.93		
5	QPSK	1	24	22.81	22.81	22.73		
5	QPSK	12	0	21.80	21.82	21.63	23	1
5	QPSK	12	7	21.85	21.91	21.68		
5	QPSK	12	13	21.85	21.78	21.66		
5	QPSK	25	0	21.81	21.91	21.55	23	1
5	16QAM	1	0	22.22	22.26	22.07		
5	16QAM	1	12	22.42	22.42	21.99		
5	16QAM	1	24	22.02	22.03	21.95	22	2
5	16QAM	12	0	20.82	20.84	20.48		
5	16QAM	12	7	20.78	20.91	20.58		
5	16QAM	12	13	20.81	20.77	20.52	22	2
5	16QAM	25	0	20.81	20.85	20.53		
5	16QAM	25	0	20.81	20.85	20.53		
Channel				18615	18900	19185	Tune-up limit (dBm)	MPR (dB)
Frequency (MHz)				1851.5	1880	1908.5		
3	QPSK	1	0	22.87	22.93	22.52	24	0
3	QPSK	1	8	22.81	22.86	22.64		
3	QPSK	1	14	22.78	22.77	22.69		
3	QPSK	8	0	21.78	21.86	21.57	23	1
3	QPSK	8	4	21.81	21.82	21.64		
3	QPSK	8	7	21.77	21.79	21.62		
3	QPSK	15	0	21.81	21.81	21.61	23	1
3	16QAM	1	0	21.89	22.06	21.78		
3	16QAM	1	8	22.05	22.21	21.92		
3	16QAM	1	14	22.09	21.97	21.97	22	2
3	16QAM	8	0	20.78	20.89	20.58		
3	16QAM	8	4	20.84	20.86	20.64		
3	16QAM	8	7	20.84	20.84	20.65	22	2
3	16QAM	8	7	20.84	20.84	20.65		
3	16QAM	15	0	20.78	20.80	20.55		
Channel				18607	18900	19193	Tune-up limit (dBm)	MPR (dB)
Frequency (MHz)				1850.7	1880	1909.3		
1.4	QPSK	1	0	22.85	22.91	22.61	24	0
1.4	QPSK	1	3	22.91	22.96	22.73		
1.4	QPSK	1	5	22.88	22.82	22.67		
1.4	QPSK	3	0	22.74	22.76	22.54		
1.4	QPSK	3	1	22.79	22.92	22.70		
1.4	QPSK	3	3	22.73	22.80	22.60		
1.4	QPSK	6	0	21.78	21.80	21.60	23	1
1.4	16QAM	1	0	22.16	22.18	21.99	23	1
1.4	16QAM	1	3	22.13	22.21	22.06		
1.4	16QAM	1	5	22.16	22.09	21.93		
1.4	16QAM	3	0	21.74	21.74	21.55		
1.4	16QAM	3	1	21.75	21.78	21.59		
1.4	16QAM	3	3	21.91	21.86	21.61		
1.4	16QAM	6	0	20.82	20.86	20.65	22	2



<LTE Band 4>

BW [MHz]	Modulation	RB Size	RB Offset	Power Low Ch. / Freq.	Power Middle Ch. / Freq.	Power High Ch. / Freq.	Tune-up limit (dBm)	MPR (dB)
Channel				20050	20175	20300		
Frequency (MHz)				1720	1732.5	1745		
20	QPSK	1	0	22.95	22.81	22.84	24	0
20	QPSK	1	49	22.65	22.71	22.73		
20	QPSK	1	99	22.56	22.57	22.67		
20	QPSK	50	0	21.87	21.85	21.74	23	1
20	QPSK	50	24	21.86	21.78	21.72		
20	QPSK	50	50	21.72	21.74	21.69		
20	QPSK	100	0	21.80	21.82	21.68		
20	16QAM	1	0	21.96	21.98	21.98	23	1
20	16QAM	1	49	21.94	21.92	22.00		
20	16QAM	1	99	21.74	21.84	21.93		
20	16QAM	50	0	20.70	20.69	20.66	22	2
20	16QAM	50	24	20.74	20.76	20.85		
20	16QAM	50	50	20.68	20.63	20.79		
20	16QAM	100	0	20.70	20.69	20.74		
Channel				20025	20175	20325		
Frequency (MHz)				1717.5	1732.5	1747.5		
15	QPSK	1	0	22.91	22.78	22.77	24	0
15	QPSK	1	37	22.74	22.67	22.76		
15	QPSK	1	74	22.62	22.70	22.73		
15	QPSK	36	0	21.71	21.78	21.81	23	1
15	QPSK	36	20	21.71	21.77	21.85		
15	QPSK	36	39	21.67	21.68	21.75		
15	QPSK	75	0	21.63	21.77	21.78		
15	16QAM	1	0	21.94	21.93	21.96	23	1
15	16QAM	1	37	21.92	21.87	21.94		
15	16QAM	1	74	21.93	21.91	21.92		
15	16QAM	36	0	20.73	20.69	20.75	22	2
15	16QAM	36	20	20.72	20.72	20.77		
15	16QAM	36	39	20.66	20.71	20.73		
15	16QAM	75	0	20.72	20.76	20.75		
Channel				20000	20175	20350		
Frequency (MHz)				1715	1732.5	1750		
10	QPSK	1	0	22.93	22.84	22.85	24	0
10	QPSK	1	25	22.94	22.90	22.88		
10	QPSK	1	49	22.86	22.80	22.85		
10	QPSK	25	0	21.83	21.81	21.64	23	1
10	QPSK	25	12	21.81	21.83	21.72		
10	QPSK	25	25	21.75	21.73	21.75		
10	QPSK	50	0	21.81	21.83	21.77		
10	16QAM	1	0	21.98	21.92	21.98	23	1
10	16QAM	1	25	21.97	21.94	21.91		
10	16QAM	1	49	21.97	21.98	21.94		
10	16QAM	25	0	20.90	20.80	20.67	22	2
10	16QAM	25	12	20.82	20.82	20.79		
10	16QAM	25	25	20.82	20.71	20.77		
10	16QAM	50	0	20.85	20.79	20.79		



Channel				19975	20175	20375	Tune-up limit (dBm)	MPR (dB)
Frequency (MHz)				1712.5	1732.5	1752.5		
5	QPSK	1	0	22.93	22.91	22.80	24	0
5	QPSK	1	12	22.90	22.79	22.78		
5	QPSK	1	24	22.94	22.80	22.92		
5	QPSK	12	0	21.72	21.75	21.73	23	1
5	QPSK	12	7	21.85	21.84	21.82		
5	QPSK	12	13	21.74	21.89	21.89		
5	QPSK	25	0	21.84	21.78	21.80	23	1
5	16QAM	1	0	21.94	21.92	21.91		
5	16QAM	1	12	21.93	21.90	21.98		
5	16QAM	1	24	21.91	21.91	21.92	22	2
5	16QAM	12	0	20.79	20.76	20.72		
5	16QAM	12	7	20.86	20.81	20.81		
5	16QAM	12	13	20.74	20.92	20.88	22	2
5	16QAM	12	13	20.74	20.92	20.88		
5	16QAM	25	0	20.83	20.83	20.81		
Channel				19965	20175	20385	Tune-up limit (dBm)	MPR (dB)
Frequency (MHz)				1711.5	1732.5	1753.5		
3	QPSK	1	0	22.73	22.93	22.92	24	0
3	QPSK	1	8	22.87	22.80	22.83		
3	QPSK	1	14	22.88	22.81	22.77		
3	QPSK	8	0	21.82	21.84	21.75	23	1
3	QPSK	8	4	21.87	21.76	21.83		
3	QPSK	8	7	21.78	21.77	21.79		
3	QPSK	15	0	21.86	21.74	21.80	23	1
3	16QAM	1	0	21.96	21.93	21.89		
3	16QAM	1	8	21.92	21.96	21.94		
3	16QAM	1	14	21.95	21.95	21.90	22	2
3	16QAM	8	0	20.87	20.89	20.79		
3	16QAM	8	4	20.92	20.81	20.84		
3	16QAM	8	7	20.83	20.78	20.88	22	2
3	16QAM	8	7	20.83	20.78	20.88		
3	16QAM	15	0	20.90	20.71	20.83		
Channel				19957	20175	20393	Tune-up limit (dBm)	MPR (dB)
Frequency (MHz)				1710.7	1732.5	1754.3		
1.4	QPSK	1	0	22.91	22.72	22.80	24	0
1.4	QPSK	1	3	22.94	22.93	22.93		
1.4	QPSK	1	5	22.83	22.81	22.91		
1.4	QPSK	3	0	22.72	22.68	22.76		
1.4	QPSK	3	1	22.91	22.76	22.82		
1.4	QPSK	3	3	22.81	22.72	22.75	23	1
1.4	QPSK	6	0	21.78	21.67	21.74		
1.4	16QAM	1	0	21.96	21.98	21.99		
1.4	16QAM	1	3	21.99	21.95	21.91	23	1
1.4	16QAM	1	3	21.99	21.95	21.91		
1.4	16QAM	1	5	21.99	21.99	21.94		
1.4	16QAM	3	0	21.82	21.77	21.84		
1.4	16QAM	3	1	21.83	21.84	21.72		
1.4	16QAM	3	3	21.81	21.81	21.75	22	2
1.4	16QAM	3	3	21.81	21.81	21.75		
1.4	16QAM	6	0	20.92	20.77	20.85	22	2



<LTE Band 5>

BW [MHz]	Modulation	RB Size	RB Offset	Power Low Ch. / Freq.	Power Middle Ch. / Freq.	Power High Ch. / Freq.	Tune-up limit (dBm)	MPR (dB)
Channel				20450	20525	20600		
Frequency (MHz)				829	836.5	844		
10	QPSK	1	0	22.53	22.48	22.42	24	0
10	QPSK	1	25	22.44	22.46	22.41		
10	QPSK	1	49	22.27	22.18	22.14		
10	QPSK	25	0	21.41	21.39	21.30	23	1
10	QPSK	25	12	21.37	21.36	21.40		
10	QPSK	25	25	21.36	21.23	21.37		
10	QPSK	50	0	21.35	21.30	21.33		
10	16QAM	1	0	21.67	21.95	21.71	23	1
10	16QAM	1	25	21.79	21.78	21.89		
10	16QAM	1	49	21.50	21.53	21.46		
10	16QAM	25	0	20.42	20.40	20.34	22	2
10	16QAM	25	12	20.33	20.43	20.42		
10	16QAM	25	25	20.27	20.31	20.40		
10	16QAM	50	0	20.26	20.40	20.41		
Channel				20425	20525	20625	Tune-up limit (dBm)	MPR (dB)
Frequency (MHz)				826.5	836.5	846.5		
5	QPSK	1	0	22.52	22.33	22.39	24	0
5	QPSK	1	12	22.25	22.34	22.29		
5	QPSK	1	24	22.26	22.27	22.11		
5	QPSK	12	0	21.43	21.24	21.39	23	1
5	QPSK	12	7	21.37	21.27	21.39		
5	QPSK	12	13	21.32	21.21	21.24		
5	QPSK	25	0	21.40	21.30	21.39		
5	16QAM	1	0	21.91	21.58	21.81	23	1
5	16QAM	1	12	21.89	21.53	21.80		
5	16QAM	1	24	21.70	21.44	21.43		
5	16QAM	12	0	20.47	20.27	20.42	22	2
5	16QAM	12	7	20.41	20.30	20.42		
5	16QAM	12	13	20.32	20.32	20.38		
5	16QAM	25	0	20.41	20.29	20.39		
Channel				20415	20525	20635	Tune-up limit (dBm)	MPR (dB)
Frequency (MHz)				825.5	836.5	847.5		
3	QPSK	1	0	22.51	22.30	22.49	24	0
3	QPSK	1	8	22.52	22.40	22.24		
3	QPSK	1	14	22.36	22.39	22.12		
3	QPSK	8	0	21.43	21.38	21.29	23	1
3	QPSK	8	4	21.53	21.31	21.26		
3	QPSK	8	7	21.36	21.29	21.22		
3	QPSK	15	0	21.39	21.30	21.17		
3	16QAM	1	0	21.69	21.53	21.53	23	1
3	16QAM	1	8	21.73	21.72	21.55		
3	16QAM	1	14	21.44	21.54	21.24		
3	16QAM	8	0	20.46	20.47	20.34	22	2
3	16QAM	8	4	20.49	20.35	20.25		
3	16QAM	8	7	20.46	20.39	20.32		
3	16QAM	15	0	20.39	20.36	20.18		



Channel				20407	20525	20643	Tune-up limit (dBm)	MPR (dB)
Frequency (MHz)				824.7	836.5	848.3		
1.4	QPSK	1	0	22.45	22.44	22.18	24	0
1.4	QPSK	1	3	22.50	22.35	22.11		
1.4	QPSK	1	5	22.42	22.26	22.08		
1.4	QPSK	3	0	22.48	22.29	22.09		
1.4	QPSK	3	1	22.43	22.27	22.03		
1.4	QPSK	3	3	22.48	22.24	22.12		
1.4	QPSK	6	0	21.37	21.19	21.09	23	1
1.4	16QAM	1	0	21.73	21.61	21.45	23	1
1.4	16QAM	1	3	21.80	21.51	21.33		
1.4	16QAM	1	5	21.59	21.69	21.32		
1.4	16QAM	3	0	21.39	21.26	21.20		
1.4	16QAM	3	1	21.57	21.25	21.08		
1.4	16QAM	3	3	21.47	21.31	21.14		
1.4	16QAM	6	0	20.52	20.32	20.25	22	2



<LTE Band 7>

BW [MHz]	Modulation	RB Size	RB Offset	Power Low Ch. / Freq.	Power Middle Ch. / Freq.	Power High Ch. / Freq.	Tune-up limit (dBm)	MPR (dB)
Channel				20850	21100	21350		
Frequency (MHz)				2510	2535	2560		
20	QPSK	1	0	21.26	21.45	21.54		
20	QPSK	1	49	21.11	21.46	21.31	23	0
20	QPSK	1	99	21.13	21.21	21.04		
20	QPSK	50	0	20.15	20.33	20.35		
20	QPSK	50	24	20.14	20.32	20.23	22	1
20	QPSK	50	50	20.11	20.18	20.31		
20	QPSK	100	0	20.16	20.33	20.31		
20	16QAM	1	0	20.43	20.59	20.62	22	1
20	16QAM	1	49	20.36	20.77	20.49		
20	16QAM	1	99	20.27	20.48	20.29		
20	16QAM	50	0	19.13	19.43	19.30	21	2
20	16QAM	50	24	19.13	19.50	19.31		
20	16QAM	50	50	19.10	19.44	19.24		
20	16QAM	100	0	19.15	19.46	19.25		
Channel				20825	21100	21375		
Frequency (MHz)				2507.5	2535	2562.5		
15	QPSK	1	0	21.06	21.40	21.27		
15	QPSK	1	37	21.23	21.51	21.37	23	0
15	QPSK	1	74	21.01	21.35	21.11		
15	QPSK	36	0	20.15	20.45	20.28		
15	QPSK	36	20	20.28	20.54	20.32	22	1
15	QPSK	36	39	20.14	20.35	20.18		
15	QPSK	75	0	20.06	20.48	20.27		
15	16QAM	1	0	20.29	20.62	20.62	22	1
15	16QAM	1	37	20.47	20.73	20.54		
15	16QAM	1	74	20.26	20.52	20.34		
15	16QAM	36	0	19.14	19.45	19.27	21	2
15	16QAM	36	20	19.25	19.52	19.35		
15	16QAM	36	39	19.03	19.39	19.21		
15	16QAM	75	0	19.07	19.44	19.27		
Channel				20800	21100	21400		
Frequency (MHz)				2505	2535	2565		
10	QPSK	1	0	21.28	21.48	21.14		
10	QPSK	1	25	21.15	21.50	21.11	23	0
10	QPSK	1	49	21.07	21.39	21.04		
10	QPSK	25	0	20.09	20.32	20.02		
10	QPSK	25	12	20.08	20.25	20.08	22	1
10	QPSK	25	25	20.16	20.29	20.01		
10	QPSK	50	0	20.01	20.28	20.02		
10	16QAM	1	0	20.56	20.98	20.51	22	1
10	16QAM	1	25	20.57	20.71	20.54		
10	16QAM	1	49	20.54	20.50	20.48		
10	16QAM	25	0	19.08	19.39	19.10	21	2
10	16QAM	25	12	19.06	19.35	19.09		
10	16QAM	25	25	19.07	19.29	19.01		
10	16QAM	50	0	19.02	19.28	19.08		



Channel				20775	21100	21425	Tune-up limit (dBm)	MPR (dB)
Frequency (MHz)				2502.5	2535	2567.5		
5	QPSK	1	0	21.21	21.40	21.08	23	0
5	QPSK	1	12	21.16	21.34	21.15		
5	QPSK	1	24	21.11	21.39	21.08		
5	QPSK	12	0	20.17	20.26	20.05	22	1
5	QPSK	12	7	20.09	20.30	20.10		
5	QPSK	12	13	20.07	20.29	20.02		
5	QPSK	25	0	20.05	20.29	20.02		
5	16QAM	1	0	20.51	20.62	20.38	22	1
5	16QAM	1	12	20.43	20.56	20.53		
5	16QAM	1	24	20.42	20.68	20.22		
5	16QAM	12	0	19.18	19.33	19.08	21	2
5	16QAM	12	7	19.16	19.42	19.13		
5	16QAM	12	13	19.09	19.34	19.07		
5	16QAM	25	0	19.07	19.33	19.05		



<LTE Band 12>

BW [MHz]	Modulation	RB Size	RB Offset	Power Low Ch. / Freq.	Power Middle Ch. / Freq.	Power High Ch. / Freq.	Tune-up limit (dBm)	MPR (dB)
Channel				23060	23095	23130		
Frequency (MHz)				704	707.5	711		
10	QPSK	1	0	23.41	23.43	23.25	24	0
10	QPSK	1	25	23.08	23.34	23.23		
10	QPSK	1	49	23.07	23.02	22.91		
10	QPSK	25	0	22.11	22.12	22.00	23	1
10	QPSK	25	12	22.04	22.08	21.93		
10	QPSK	25	25	22.04	21.91	21.87		
10	QPSK	50	0	22.02	22.07	22.02		
10	16QAM	1	0	22.52	22.31	22.55	23	1
10	16QAM	1	25	22.35	22.49	22.28		
10	16QAM	1	49	22.31	22.24	22.05		
10	16QAM	25	0	21.11	21.10	21.07	22	2
10	16QAM	25	12	21.05	21.07	20.94		
10	16QAM	25	25	21.05	20.91	20.86		
10	16QAM	50	0	21.07	21.01	21.03		
Channel				23035	23095	23155	Tune-up limit (dBm)	MPR (dB)
Frequency (MHz)				701.5	707.5	713.5		
5	QPSK	1	0	23.17	23.14	23.06	24	0
5	QPSK	1	12	23.10	23.06	22.85		
5	QPSK	1	24	23.07	23.07	22.76		
5	QPSK	12	0	22.06	22.02	21.90	23	1
5	QPSK	12	7	21.99	22.10	21.93		
5	QPSK	12	13	22.06	22.01	21.78		
5	QPSK	25	0	22.12	22.06	21.95		
5	16QAM	1	0	22.36	22.36	22.31	23	1
5	16QAM	1	12	22.63	22.60	22.37		
5	16QAM	1	24	22.22	22.32	22.19		
5	16QAM	12	0	21.02	21.01	20.89	22	2
5	16QAM	12	7	20.98	21.15	20.96		
5	16QAM	12	13	21.00	21.00	20.90		
5	16QAM	25	0	21.08	21.06	20.91		
Channel				23025	23095	23165	Tune-up limit (dBm)	MPR (dB)
Frequency (MHz)				700.5	707.5	714.5		
3	QPSK	1	0	23.23	23.22	22.98	24	0
3	QPSK	1	8	23.24	23.14	22.86		
3	QPSK	1	14	22.99	22.96	22.85		
3	QPSK	8	0	22.10	22.12	21.96	23	1
3	QPSK	8	4	22.12	22.12	21.92		
3	QPSK	8	7	22.02	22.03	21.89		
3	QPSK	15	0	22.12	22.11	21.93		
3	16QAM	1	0	22.40	22.35	22.23	23	1
3	16QAM	1	8	22.34	22.42	22.06		
3	16QAM	1	14	22.28	22.40	22.13		
3	16QAM	8	0	21.17	21.15	20.97	22	2
3	16QAM	8	4	21.26	21.18	20.95		
3	16QAM	8	7	21.04	21.07	20.92		
3	16QAM	15	0	21.15	21.13	20.91		



Channel				23017	23095	23173	Tune-up limit (dBm)	MPR (dB)
Frequency (MHz)				699.7	707.5	715.3		
1.4	QPSK	1	0	23.32	23.27	23.07	24	0
1.4	QPSK	1	3	23.35	23.37	22.97		
1.4	QPSK	1	5	23.21	23.05	22.90		
1.4	QPSK	3	0	23.12	23.07	22.95		
1.4	QPSK	3	1	23.25	23.04	23.11		
1.4	QPSK	3	3	23.08	23.10	22.88		
1.4	QPSK	6	0	22.00	21.96	21.79	23	1
1.4	16QAM	1	0	22.68	22.49	22.29	23	1
1.4	16QAM	1	3	22.51	22.57	22.22		
1.4	16QAM	1	5	22.43	22.46	22.18		
1.4	16QAM	3	0	22.27	22.12	21.91		
1.4	16QAM	3	1	22.22	22.04	21.85		
1.4	16QAM	3	3	22.20	22.16	21.78		
1.4	16QAM	6	0	21.12	21.05	21.01	22	2



<LTE Band 13>

BW [MHz]	Modulation	RB Size	RB Offset	Power Low Ch. / Freq.	Power Middle Ch. / Freq.	Power High Ch. / Freq.	Tune-up limit (dBm)	MPR (dB)
Channel				23230				
Frequency (MHz)				782				
10	QPSK	1	0	22.55			24	0
10	QPSK	1	25	22.54				
10	QPSK	1	49	22.48				
10	QPSK	25	0	21.49			23	1
10	QPSK	25	12	21.47				
10	QPSK	25	25	21.36				
10	QPSK	50	0	21.48				
10	16QAM	1	0	21.46			23	1
10	16QAM	1	25	21.93				
10	16QAM	1	49	21.69				
10	16QAM	25	0	20.48			22	2
10	16QAM	25	12	20.57				
10	16QAM	25	25	20.36				
10	16QAM	50	0	20.46				
Channel				23205	23230	23255	Tune-up limit (dBm)	MPR (dB)
Frequency (MHz)				779.5	782	784.5		
5	QPSK	1	0	22.14	22.45	22.47	24	0
5	QPSK	1	12	22.45	22.48	22.20		
5	QPSK	1	24	22.46	22.22	22.44		
5	QPSK	12	0	21.49	21.52	21.44	23	1
5	QPSK	12	7	21.49	21.56	21.45		
5	QPSK	12	13	21.59	21.38	21.56		
5	QPSK	25	0	21.61	21.45	21.51		
5	16QAM	1	0	21.76	21.72	21.94	23	1
5	16QAM	1	12	21.89	21.87	22.11		
5	16QAM	1	24	21.85	21.62	21.94		
5	16QAM	12	0	20.46	20.49	20.48	22	2
5	16QAM	12	7	20.46	20.55	20.52		
5	16QAM	12	13	20.60	20.42	20.61		
5	16QAM	12	13	20.60	20.42	20.61		
5	16QAM	25	0	20.66	20.49	20.53		



<LTE Band 25>

BW [MHz]	Modulation	RB Size	RB Offset	Power Low Ch. / Freq.	Power Middle Ch. / Freq.	Power High Ch. / Freq.	Tune-up limit (dBm)	MPR (dB)
Channel				26140	26340	26590		
Frequency (MHz)				1860	1880	1905		
20	QPSK	1	0	22.92	23.02	23.11	24	0
20	QPSK	1	49	22.61	22.78	22.76		
20	QPSK	1	99	22.65	22.66	22.74		
20	QPSK	50	0	21.70	21.80	21.88	23	1
20	QPSK	50	24	21.69	21.83	21.78		
20	QPSK	50	50	21.62	21.72	21.70		
20	QPSK	100	0	21.68	21.80	21.82		
20	16QAM	1	0	21.99	22.21	22.10	23	1
20	16QAM	1	49	21.91	22.20	22.18		
20	16QAM	1	99	21.77	21.89	22.09		
20	16QAM	50	0	20.64	20.78	20.72	22	2
20	16QAM	50	24	20.65	20.77	20.71		
20	16QAM	50	50	20.63	20.69	20.67		
20	16QAM	100	0	20.70	20.79	20.80		
Channel				26115	26340	26615	Tune-up limit (dBm)	MPR (dB)
Frequency (MHz)				1857.5	1880	1907.5		
15	QPSK	1	0	22.72	22.83	22.81	24	0
15	QPSK	1	37	22.82	23.04	22.57		
15	QPSK	1	74	22.70	22.67	22.70		
15	QPSK	36	0	21.62	21.78	21.77	23	1
15	QPSK	36	20	21.63	21.86	21.82		
15	QPSK	36	39	21.62	21.82	21.73		
15	QPSK	75	0	21.73	21.85	21.76		
15	16QAM	1	0	22.18	22.02	22.11	23	1
15	16QAM	1	37	21.94	22.30	22.01		
15	16QAM	1	74	21.87	22.01	22.01		
15	16QAM	36	0	20.68	20.70	20.76	22	2
15	16QAM	36	20	20.59	20.81	20.79		
15	16QAM	36	39	20.57	20.79	20.69		
15	16QAM	75	0	20.75	20.77	20.81		
Channel				26090	26340	26640	Tune-up limit (dBm)	MPR (dB)
Frequency (MHz)				1855	1880	1910		
10	QPSK	1	0	22.82	22.88	22.99	24	0
10	QPSK	1	25	22.81	23.03	23.02		
10	QPSK	1	49	22.63	22.79	22.79		
10	QPSK	25	0	21.61	21.81	21.77	23	1
10	QPSK	25	12	21.69	21.79	21.74		
10	QPSK	25	25	21.68	21.83	21.79		
10	QPSK	50	0	21.69	21.84	21.77		
10	16QAM	1	0	22.11	22.24	22.29	23	1
10	16QAM	1	25	21.89	22.10	22.09		
10	16QAM	1	49	21.85	22.02	22.02		
10	16QAM	25	0	20.57	20.78	20.78	22	2
10	16QAM	25	12	20.68	20.78	20.75		
10	16QAM	25	25	20.65	20.83	20.80		
10	16QAM	50	0	20.69	20.80	20.72		



Channel				26065	26340	26665	Tune-up limit (dBm)	MPR (dB)
Frequency (MHz)				1852.5	1880	1912.5		
5	QPSK	1	0	22.76	22.97	22.90	24	0
5	QPSK	1	12	22.84	22.86	22.95		
5	QPSK	1	24	22.64	22.96	22.83		
5	QPSK	12	0	21.72	21.71	21.78	23	1
5	QPSK	12	7	21.79	21.89	21.87		
5	QPSK	12	13	21.72	21.80	21.71		
5	QPSK	25	0	21.70	21.85	21.82	23	1
5	16QAM	1	0	21.97	22.11	22.15		
5	16QAM	1	12	22.10	22.05	22.07		
5	16QAM	1	24	21.96	22.31	22.18	22	2
5	16QAM	12	0	20.76	20.78	20.89		
5	16QAM	12	7	20.80	20.92	20.90		
5	16QAM	12	13	20.75	20.88	20.79	22	2
5	16QAM	25	0	20.71	20.83	20.85		
5	16QAM	25	0	20.71	20.83	20.85		
Channel				26055	26340	26675	Tune-up limit (dBm)	MPR (dB)
Frequency (MHz)				1851.5	1880	1913.5		
3	QPSK	1	0	22.67	22.90	22.72	24	0
3	QPSK	1	8	22.65	23.06	22.68		
3	QPSK	1	14	22.58	22.87	22.73		
3	QPSK	8	0	21.67	21.86	21.77	23	1
3	QPSK	8	4	21.64	21.85	21.83		
3	QPSK	8	7	21.63	21.91	21.70		
3	QPSK	15	0	21.64	21.83	21.74	23	1
3	16QAM	1	0	21.97	22.19	21.91		
3	16QAM	1	8	21.92	22.34	22.05		
3	16QAM	1	14	21.94	22.16	22.20	22	2
3	16QAM	8	0	20.66	20.89	20.78		
3	16QAM	8	4	20.66	20.96	20.94		
3	16QAM	8	7	20.70	20.89	20.71	22	2
3	16QAM	8	7	20.70	20.89	20.71		
3	16QAM	15	0	20.63	20.79	20.74		
Channel				26047	26340	26683	Tune-up limit (dBm)	MPR (dB)
Frequency (MHz)				1850.7	1880	1914.3		
1.4	QPSK	1	0	22.71	22.78	22.91	24	0
1.4	QPSK	1	3	22.68	22.85	22.71		
1.4	QPSK	1	5	22.55	22.80	22.82		
1.4	QPSK	3	0	22.60	22.99	22.73		
1.4	QPSK	3	1	22.59	22.77	22.80		
1.4	QPSK	3	3	22.61	22.95	22.72	23	1
1.4	QPSK	6	0	21.55	21.74	21.74		
1.4	16QAM	1	0	22.02	22.34	22.12	23	1
1.4	16QAM	1	3	22.11	22.13	21.97		
1.4	16QAM	1	5	22.00	22.09	22.04		
1.4	16QAM	3	0	21.60	21.91	21.71		
1.4	16QAM	3	1	21.56	21.83	21.86		
1.4	16QAM	3	3	21.53	21.80	21.70		
1.4	16QAM	6	0	20.70	20.81	20.87	22	2



<LTE Band 26>

BW [MHz]	Modulation	RB Size	RB Offset	Power Low Ch. / Freq.	Power Middle Ch. / Freq.	Power High Ch. / Freq.	Tune-up limit (dBm)	MPR (dB)
Channel				26765	26865	26965		
Frequency (MHz)				821.5	831.5	841.5		
15	QPSK	1	0	22.74	23.03	22.63		
15	QPSK	1	37	22.56	22.54	22.55	24	0
15	QPSK	1	74	22.54	22.53	22.53		
15	QPSK	36	0	21.55	21.87	21.50		
15	QPSK	36	20	21.54	21.79	21.58	23	1
15	QPSK	36	39	21.42	21.59	21.47		
15	QPSK	75	0	21.52	21.73	21.48		
15	16QAM	1	0	21.87	22.16	21.87	23	1
15	16QAM	1	37	21.69	22.12	21.69		
15	16QAM	1	74	21.66	21.72	21.68		
15	16QAM	36	0	20.57	20.82	20.48	22	2
15	16QAM	36	20	20.56	20.77	20.54		
15	16QAM	36	39	20.42	20.61	20.41		
15	16QAM	75	0	20.49	20.74	20.50		
Channel				26740	26865	26990		
Frequency (MHz)				819	831.5	844		
10	QPSK	1	0	22.75	22.98	22.68		
10	QPSK	1	25	22.70	22.77	22.50	24	0
10	QPSK	1	49	22.51	22.62	22.53		
10	QPSK	25	0	21.68	21.83	21.47		
10	QPSK	25	12	21.56	21.75	21.44	23	1
10	QPSK	25	25	21.44	21.68	21.38		
10	QPSK	50	0	21.57	21.79	21.44		
10	16QAM	1	0	22.08	22.12	21.88	23	1
10	16QAM	1	25	21.91	22.17	21.72		
10	16QAM	1	49	21.75	21.97	21.74		
10	16QAM	25	0	20.72	20.79	20.47	22	2
10	16QAM	25	12	20.57	20.70	20.48		
10	16QAM	25	25	20.50	20.68	20.39		
10	16QAM	50	0	20.53	20.79	20.43		
Channel				26715	26865	27015		
Frequency (MHz)				816.5	831.5	846.5		
5	QPSK	1	0	22.56	22.91	22.57		
5	QPSK	1	12	22.44	22.79	22.74	24	0
5	QPSK	1	24	22.43	22.72	22.51		
5	QPSK	12	0	21.52	21.91	21.51		
5	QPSK	12	7	21.48	21.90	21.53	23	1
5	QPSK	12	13	21.46	21.81	21.52		
5	QPSK	25	0	21.47	21.87	21.56		
5	16QAM	1	0	21.89	22.33	22.08	23	1
5	16QAM	1	12	21.84	22.31	22.09		
5	16QAM	1	24	21.83	22.00	21.85		
5	16QAM	12	0	20.50	20.95	20.51	22	2
5	16QAM	12	7	20.45	20.94	20.54		
5	16QAM	12	13	20.46	20.75	20.62		
5	16QAM	25	0	20.48	20.86	20.56		



Channel				26705	26865	27025	Tune-up limit (dBm)	MPR (dB)
Frequency (MHz)				815.5	831.5	847.5		
3	QPSK	1	0	22.58	22.98	22.60	24	0
3	QPSK	1	8	22.52	22.94	22.56		
3	QPSK	1	14	22.51	22.96	22.54		
3	QPSK	8	0	21.69	22.04	21.54	23	1
3	QPSK	8	4	21.64	21.99	21.62		
3	QPSK	8	7	21.63	21.90	21.58		
3	QPSK	15	0	21.62	21.93	21.56	23	1
3	16QAM	1	0	21.89	22.36	21.90		
3	16QAM	1	8	21.87	22.31	21.86		
3	16QAM	1	14	21.86	22.06	21.87	22	2
3	16QAM	8	0	20.65	21.06	20.63		
3	16QAM	8	4	20.63	21.06	20.62		
3	16QAM	8	7	20.62	21.03	20.61	22	2
3	16QAM	15	0	20.57	20.92	20.56		
Channel				26697	26865	27033	Tune-up limit (dBm)	MPR (dB)
Frequency (MHz)				814.7	831.5	848.3		
1.4	QPSK	1	0	22.61	22.96	22.65	24	0
1.4	QPSK	1	3	22.61	22.99	22.62		
1.4	QPSK	1	5	22.55	23.00	22.51		
1.4	QPSK	3	0	22.51	22.97	22.51		
1.4	QPSK	3	1	22.50	22.95	22.62		
1.4	QPSK	3	3	22.62	22.96	22.55	23	1
1.4	QPSK	6	0	21.47	21.90	21.53		
1.4	16QAM	1	0	21.98	22.24	21.98	23	1
1.4	16QAM	1	3	21.98	22.40	21.92		
1.4	16QAM	1	5	22.03	22.29	21.90		
1.4	16QAM	3	0	21.64	22.08	21.60		
1.4	16QAM	3	1	21.62	22.09	21.61		
1.4	16QAM	3	3	21.61	22.00	21.62		
1.4	16QAM	6	0	20.51	21.00	20.56	22	2



Reduced Power Mode

<LTE Band 2>

BW [MHz]	Modulation	RB Size	RB Offset	Power Low Ch. / Freq.	Power Middle Ch. / Freq.	Power High Ch. / Freq.	Tune-up limit (dBm)	MPR (dB)
Channel				18700	18900	19100		
Frequency (MHz)				1860	1880	1900		
20	QPSK	1	0	21.21	21.24	21.17	21.5	0
20	QPSK	1	49	20.77	20.90	20.84		
20	QPSK	1	99	20.75	20.83	20.77		
20	QPSK	50	0	20.85	20.96	20.89	21.5	0
20	QPSK	50	24	20.82	20.94	20.84		
20	QPSK	50	50	20.77	20.81	20.70		
20	QPSK	100	0	20.84	20.96	20.81	21.5	0
20	16QAM	1	0	21.11	21.17	21.13		
20	16QAM	1	49	20.97	21.08	21.03		
20	16QAM	1	99	20.92	20.90	20.76	20.5	1
20	16QAM	50	0	20.35	20.43	20.36		
20	16QAM	50	24	20.26	20.46	20.34		
20	16QAM	50	50	20.20	20.27	20.18	20.5	1
20	16QAM	100	0	20.33	20.42	20.28		
Channel				18675	18900	19125		
Frequency (MHz)				1857.5	1880	1902.5		
15	QPSK	1	0	21.00	20.94	20.81	21.5	0
15	QPSK	1	37	20.88	20.86	20.68		
15	QPSK	1	74	20.67	20.76	20.65		
15	QPSK	36	0	20.89	20.90	20.80	21.5	0
15	QPSK	36	20	20.84	20.94	20.80		
15	QPSK	36	39	20.66	20.86	20.77		
15	QPSK	75	0	20.88	20.89	20.77	21.5	0
15	16QAM	1	0	21.16	21.10	21.06		
15	16QAM	1	37	21.02	21.05	21.02		
15	16QAM	1	74	20.97	21.02	20.85	20.5	1
15	16QAM	36	0	20.35	20.38	20.27		
15	16QAM	36	20	20.31	20.43	20.26		
15	16QAM	36	39	20.18	20.36	20.21	20.5	1
15	16QAM	75	0	20.36	20.39	20.29		
Channel				18650	18900	19150		
Frequency (MHz)				1855	1880	1905		
10	QPSK	1	0	20.99	21.00	20.92	21.5	0
10	QPSK	1	25	21.00	21.03	20.84		
10	QPSK	1	49	20.82	20.84	20.67		
10	QPSK	25	0	20.90	20.95	20.78	21.5	0
10	QPSK	25	12	20.83	20.93	20.79		
10	QPSK	25	25	20.79	20.90	20.62		
10	QPSK	50	0	20.87	20.91	20.69	21.5	0
10	16QAM	1	0	21.13	21.16	21.11		
10	16QAM	1	25	21.16	21.14	21.06		
10	16QAM	1	49	21.05	21.05	20.94	20.5	1
10	16QAM	25	0	20.34	20.43	20.27		
10	16QAM	25	12	20.35	20.43	20.28		
10	16QAM	25	25	20.25	20.39	20.08	20.5	1
10	16QAM	50	0	20.34	20.39	20.19		



Channel				18625	18900	19175	Tune-up limit (dBm)	MPR (dB)
Frequency (MHz)				1852.5	1880	1907.5		
5	QPSK	1	0	20.93	21.00	20.77	21.5	0
5	QPSK	1	12	20.85	20.87	20.70		
5	QPSK	1	24	20.77	20.80	20.68		
5	QPSK	12	0	20.88	20.85	20.63	21.5	0
5	QPSK	12	7	20.88	20.94	20.69		
5	QPSK	12	13	20.87	20.80	20.67		
5	QPSK	25	0	20.83	20.93	20.69	21.5	0
5	16QAM	1	0	21.10	21.16	21.04		
5	16QAM	1	12	21.17	21.10	21.08		
5	16QAM	1	24	21.09	21.13	21.01	20.5	1
5	16QAM	12	0	20.37	20.36	20.12		
5	16QAM	12	7	20.37	20.44	20.20		
5	16QAM	12	13	20.33	20.30	20.17	20.5	1
5	16QAM	25	0	20.33	20.43	20.12		
5	16QAM	25	0	20.33	20.43	20.12		
Channel				18615	18900	19185	Tune-up limit (dBm)	MPR (dB)
Frequency (MHz)				1851.5	1880	1908.5		
3	QPSK	1	0	20.99	21.08	20.77	21.5	0
3	QPSK	1	8	20.97	21.02	20.79		
3	QPSK	1	14	20.94	20.92	20.79		
3	QPSK	8	0	20.96	21.02	20.77	21.5	0
3	QPSK	8	4	21.00	21.03	20.80		
3	QPSK	8	7	20.97	20.94	20.79		
3	QPSK	15	0	20.96	20.98	20.67	21.5	0
3	16QAM	1	0	21.15	21.14	20.93		
3	16QAM	1	8	21.10	21.13	21.08		
3	16QAM	1	14	21.13	21.13	21.03	20.5	1
3	16QAM	8	0	20.49	20.47	20.27		
3	16QAM	8	4	20.47	20.46	20.32		
3	16QAM	8	7	20.45	20.42	20.28	20.5	1
3	16QAM	8	7	20.45	20.42	20.28		
3	16QAM	15	0	20.43	20.42	20.17		
Channel				18607	18900	19193	Tune-up limit (dBm)	MPR (dB)
Frequency (MHz)				1850.7	1880	1909.3		
1.4	QPSK	1	0	20.90	21.10	20.85	21.5	0
1.4	QPSK	1	3	20.99	21.03	20.85		
1.4	QPSK	1	5	20.96	20.98	20.78		
1.4	QPSK	3	0	20.95	20.92	20.72		
1.4	QPSK	3	1	21.06	21.03	20.82		
1.4	QPSK	3	3	20.94	20.99	20.79		
1.4	QPSK	6	0	20.90	20.95	20.72	21.5	0
1.4	16QAM	1	0	21.14	21.10	21.16	21.5	0
1.4	16QAM	1	3	21.12	21.15	21.14		
1.4	16QAM	1	5	21.13	21.13	21.09		
1.4	16QAM	3	0	20.94	20.99	20.78		
1.4	16QAM	3	1	20.98	21.00	20.79		
1.4	16QAM	3	3	20.94	21.03	20.82		
1.4	16QAM	6	0	20.47	20.42	20.27	20.5	1



<LTE Band 4>

BW [MHz]	Modulation	RB Size	RB Offset	Power Low Ch. / Freq.	Power Middle Ch. / Freq.	Power High Ch. / Freq.	Tune-up limit (dBm)	MPR (dB)
Channel				20050	20175	20300		
Frequency (MHz)				1720	1732.5	1745		
20	QPSK	1	0	21.98	21.85	21.83	23	0
20	QPSK	1	49	21.68	21.76	21.76		
20	QPSK	1	99	21.60	21.63	21.77		
20	QPSK	50	0	21.89	21.87	21.82	23	0
20	QPSK	50	24	21.58	21.71	21.72		
20	QPSK	50	50	21.52	21.61	21.76		
20	QPSK	100	0	21.84	21.81	21.64		
20	16QAM	1	0	21.62	21.74	21.71	23	0
20	16QAM	1	49	21.56	21.57	21.75		
20	16QAM	1	99	21.62	21.71	21.72		
20	16QAM	50	0	20.82	20.79	20.62	22	1
20	16QAM	50	24	20.60	20.62	20.61		
20	16QAM	50	50	20.54	20.61	20.63		
20	16QAM	100	0	20.60	20.59	20.60		
Channel				20025	20175	20325	Tune-up limit (dBm)	MPR (dB)
Frequency (MHz)				1717.5	1732.5	1747.5		
15	QPSK	1	0	21.94	21.69	21.78	23	0
15	QPSK	1	37	21.75	21.71	21.81		
15	QPSK	1	74	21.70	21.69	21.74		
15	QPSK	36	0	21.54	21.55	21.70	23	0
15	QPSK	36	20	21.51	21.59	21.51		
15	QPSK	36	39	21.53	21.55	21.57		
15	QPSK	75	0	21.53	21.58	21.50		
15	16QAM	1	0	21.51	21.63	21.60	23	0
15	16QAM	1	37	21.45	21.46	21.64		
15	16QAM	1	74	21.51	21.60	21.61		
15	16QAM	36	0	20.93	20.90	20.73	22	1
15	16QAM	36	20	20.71	20.73	20.72		
15	16QAM	36	39	20.65	20.72	20.74		
15	16QAM	75	0	20.71	20.70	20.71		
Channel				20000	20175	20350	Tune-up limit (dBm)	MPR (dB)
Frequency (MHz)				1715	1732.5	1750		
10	QPSK	1	0	21.95	21.76	21.93	23	0
10	QPSK	1	25	21.94	21.81	21.96		
10	QPSK	1	49	21.78	21.80	21.76		
10	QPSK	25	0	21.68	21.64	21.62	23	0
10	QPSK	25	12	21.63	21.59	21.60		
10	QPSK	25	25	21.51	21.56	21.51		
10	QPSK	50	0	21.44	21.47	21.42		
10	16QAM	1	0	21.75	21.72	21.55	23	0
10	16QAM	1	25	21.53	21.65	21.62		
10	16QAM	1	49	21.47	21.48	21.66		
10	16QAM	25	0	20.74	20.72	20.69	22	1
10	16QAM	25	12	20.73	20.70	20.53		
10	16QAM	25	25	20.51	20.53	20.52		
10	16QAM	50	0	20.45	20.52	20.54		



Channel				19975	20175	20375	Tune-up limit (dBm)	MPR (dB)
Frequency (MHz)				1712.5	1732.5	1752.5		
5	QPSK	1	0	21.85	21.87	21.75	23	0
5	QPSK	1	12	21.82	21.86	21.69		
5	QPSK	1	24	21.93	21.71	21.96		
5	QPSK	12	0	21.62	21.66	21.61	23	0
5	QPSK	12	7	21.59	21.64	21.60		
5	QPSK	12	13	21.56	21.58	21.51		
5	QPSK	25	0	21.52	21.58	21.54	23	0
5	16QAM	1	0	21.86	21.83	21.66		
5	16QAM	1	12	21.64	21.76	21.73		
5	16QAM	1	24	21.58	21.59	21.77	22	1
5	16QAM	12	0	20.84	20.83	20.74		
5	16QAM	12	7	20.84	20.81	20.64		
5	16QAM	12	13	20.62	20.64	20.63	22	1
5	16QAM	12	13	20.62	20.64	20.63		
5	16QAM	25	0	20.56	20.63	20.65		
Channel				19965	20175	20385	Tune-up limit (dBm)	MPR (dB)
Frequency (MHz)				1711.5	1732.5	1753.5		
3	QPSK	1	0	21.85	21.90	21.86	23	0
3	QPSK	1	8	21.71	21.80	21.92		
3	QPSK	1	14	21.77	21.81	21.86		
3	QPSK	8	0	21.78	21.67	21.64	23	0
3	QPSK	8	4	21.57	21.56	21.62		
3	QPSK	8	7	21.55	21.55	21.57		
3	QPSK	15	0	21.56	21.59	21.51	23	0
3	16QAM	1	0	21.73	21.70	21.53		
3	16QAM	1	8	21.51	21.63	21.60		
3	16QAM	1	14	21.45	21.46	21.64	22	1
3	16QAM	8	0	20.73	20.70	20.71		
3	16QAM	8	4	20.71	20.68	20.51		
3	16QAM	8	7	20.49	20.51	20.50	22	1
3	16QAM	15	0	20.43	20.50	20.52		
Channel				19957	20175	20393	Tune-up limit (dBm)	MPR (dB)
Frequency (MHz)				1710.7	1732.5	1754.3		
1.4	QPSK	1	0	21.95	21.65	21.80	23	0
1.4	QPSK	1	3	21.94	21.86	21.88		
1.4	QPSK	1	5	21.75	21.72	21.88		
1.4	QPSK	3	0	21.76	21.78	21.68		
1.4	QPSK	3	1	21.90	21.74	21.77		
1.4	QPSK	3	3	21.90	21.66	21.75	23	0
1.4	QPSK	6	0	21.88	21.87	21.85		
1.4	16QAM	1	0	21.86	21.56	21.71	23	0
1.4	16QAM	1	3	21.85	21.77	21.79		
1.4	16QAM	1	5	21.66	21.63	21.79		
1.4	16QAM	3	0	21.82	21.52	21.67		
1.4	16QAM	3	1	21.81	21.73	21.75		
1.4	16QAM	3	3	21.62	21.59	21.75		
1.4	16QAM	6	0	20.57	20.56	20.57	22	1



<LTE Band 5>

BW [MHz]	Modulation	RB Size	RB Offset	Power Low Ch. / Freq.	Power Middle Ch. / Freq.	Power High Ch. / Freq.	Tune-up limit (dBm)	MPR (dB)
Channel				20450	20525	20600		
Frequency (MHz)				829	836.5	844		
10	QPSK	1	0	21.37	21.26	21.41	23	0
10	QPSK	1	25	21.29	21.22	21.23		
10	QPSK	1	49	21.11	21.05	21.20		
10	QPSK	25	0	21.20	21.10	21.23	23	0
10	QPSK	25	12	21.20	21.08	21.23		
10	QPSK	25	25	21.12	21.03	21.21		
10	QPSK	50	0	21.15	21.10	21.27	23	0
10	16QAM	1	0	21.20	21.17	21.15		
10	16QAM	1	25	21.22	21.17	21.17		
10	16QAM	1	49	21.16	21.14	21.13	22	1
10	16QAM	25	0	20.23	20.10	20.13		
10	16QAM	25	12	20.22	20.22	20.25		
10	16QAM	25	25	20.14	20.15	20.21	22	1
10	16QAM	50	0	20.13	20.23	20.24		
Channel				20425	20525	20625		
Frequency (MHz)				826.5	836.5	846.5	23	0
5	QPSK	1	0	21.31	21.24	21.19		
5	QPSK	1	12	21.28	21.11	21.10		
5	QPSK	1	24	21.22	21.12	21.06	23	0
5	QPSK	12	0	21.29	21.15	21.19		
5	QPSK	12	7	21.29	21.16	21.17		
5	QPSK	12	13	21.20	21.13	21.03	23	0
5	QPSK	25	0	21.31	21.16	21.18		
5	16QAM	1	0	21.27	21.27	21.28		
5	16QAM	1	12	21.26	21.26	21.29	23	0
5	16QAM	1	24	21.16	21.20	21.07		
5	16QAM	12	0	20.37	20.20	20.22		
5	16QAM	12	7	20.31	20.21	20.19	22	1
5	16QAM	12	13	20.21	20.21	20.15		
5	16QAM	25	0	20.31	20.21	20.15		
Channel				20415	20525	20635	Tune-up limit (dBm)	MPR (dB)
Frequency (MHz)				825.5	836.5	847.5	23	0
3	QPSK	1	0	21.40	21.20	21.13		
3	QPSK	1	8	21.21	21.19	21.14		
3	QPSK	1	14	21.24	21.12	21.05	23	0
3	QPSK	8	0	21.33	21.22	21.16		
3	QPSK	8	4	21.22	21.17	21.14		
3	QPSK	8	7	21.25	21.18	21.13	23	0
3	QPSK	15	0	21.27	21.19	21.07		
3	16QAM	1	0	21.24	21.22	21.20		
3	16QAM	1	8	21.30	21.30	21.22	23	0
3	16QAM	1	14	21.29	21.22	21.05		
3	16QAM	8	0	20.40	20.31	20.18		
3	16QAM	8	4	20.46	20.24	20.14	22	1
3	16QAM	8	7	20.30	20.23	20.16		
3	16QAM	15	0	20.27	20.24	20.07		



Channel				20407	20525	20643	Tune-up limit (dBm)	MPR (dB)
Frequency (MHz)				824.7	836.5	848.3		
1.4	QPSK	1	0	21.33	21.20	21.16	23	0
1.4	QPSK	1	3	21.36	21.18	21.16		
1.4	QPSK	1	5	21.33	21.16	21.07		
1.4	QPSK	3	0	21.20	21.16	21.04		
1.4	QPSK	3	1	21.39	21.14	21.10		
1.4	QPSK	3	3	21.31	21.14	21.08		
1.4	QPSK	6	0	21.27	21.05	21.07	23	0
1.4	16QAM	1	0	21.23	21.25	21.27	23	0
1.4	16QAM	1	3	21.23	21.17	21.11		
1.4	16QAM	1	5	21.26	21.28	21.17		
1.4	16QAM	3	0	21.11	21.12	21.12		
1.4	16QAM	3	1	21.25	21.16	21.10		
1.4	16QAM	3	3	21.24	21.19	21.08		
1.4	16QAM	6	0	20.37	20.16	20.11	22	1



<LTE Band 13>

BW [MHz]	Modulation	RB Size	RB Offset	Power Low Ch. / Freq.	Power Middle Ch. / Freq.	Power High Ch. / Freq.	Tune-up limit (dBm)	MPR (dB)
Channel				23230				
Frequency (MHz)				782				
10	QPSK	1	0	20.68			22	0
10	QPSK	1	25	20.62				
10	QPSK	1	49	20.52				
10	QPSK	25	0	20.36			22	0
10	QPSK	25	12	20.35				
10	QPSK	25	25	20.27				
10	QPSK	50	0	20.44				
10	16QAM	1	0	20.66			22	0
10	16QAM	1	25	20.45				
10	16QAM	1	49	20.58				
10	16QAM	25	0	20.39			22	0
10	16QAM	25	12	20.41				
10	16QAM	25	25	20.28				
10	16QAM	50	0	20.38				
Channel				23205	23230	23255	Tune-up limit (dBm)	MPR (dB)
Frequency (MHz)				779.5	782	784.5		
5	QPSK	1	0	20.30	20.32	20.49	22	0
5	QPSK	1	12	20.43	20.42	20.23		
5	QPSK	1	24	20.46	20.13	20.52		
5	QPSK	12	0	20.39	20.38	20.30	22	0
5	QPSK	12	7	20.37	20.42	20.30		
5	QPSK	12	13	20.46	20.26	20.39		
5	QPSK	25	0	20.47	20.29	20.39		
5	16QAM	1	0	20.25	20.25	20.12	22	0
5	16QAM	1	12	20.28	20.27	20.23		
5	16QAM	1	24	20.25	20.13	20.24		
5	16QAM	12	0	20.06	20.08	20.04	22	0
5	16QAM	12	7	20.03	20.15	20.07		
5	16QAM	12	13	20.16	20.09	20.19		
5	16QAM	25	0	20.11	20.17	20.10		



<LTE Band 25>

BW [MHz]	Modulation	RB Size	RB Offset	Power Low Ch. / Freq.	Power Middle Ch. / Freq.	Power High Ch. / Freq.	Tune-up limit (dBm)	MPR (dB)
Channel				26140	26340	26590		
Frequency (MHz)				1860	1880	1905		
20	QPSK	1	0	21.21	21.17	21.29	21.5	0
20	QPSK	1	49	20.92	20.86	20.94		
20	QPSK	1	99	20.80	20.80	20.86		
20	QPSK	50	0	21.09	21.08	21.21	21.5	0
20	QPSK	50	24	20.87	20.84	20.93		
20	QPSK	50	50	20.76	20.78	20.82		
20	QPSK	100	0	20.88	20.88	21.05		
20	16QAM	1	0	21.18	21.16	21.19	21.5	0
20	16QAM	1	49	21.18	21.18	21.18		
20	16QAM	1	99	21.00	20.89	20.96		
20	16QAM	50	0	20.35	20.40	20.41	20.5	1
20	16QAM	50	24	20.33	20.43	20.46		
20	16QAM	50	50	20.23	20.33	20.32		
20	16QAM	100	0	20.36	20.37	20.43		
Channel				26115	26340	26615	Tune-up limit (dBm)	MPR (dB)
Frequency (MHz)				1857.5	1880	1907.5		
15	QPSK	1	0	20.89	20.97	20.98	21.5	0
15	QPSK	1	37	20.79	20.85	21.00		
15	QPSK	1	74	20.66	20.65	20.66		
15	QPSK	36	0	20.86	20.83	20.90	21.5	0
15	QPSK	36	20	20.83	20.87	20.93		
15	QPSK	36	39	20.80	20.77	20.88		
15	QPSK	75	0	20.83	20.91	20.90		
15	16QAM	1	0	21.17	21.16	21.17	21.5	0
15	16QAM	1	37	21.11	21.15	21.21		
15	16QAM	1	74	20.93	20.94	20.99		
15	16QAM	36	0	20.40	20.31	20.37	20.5	1
15	16QAM	36	20	20.37	20.34	20.40		
15	16QAM	36	39	20.32	20.24	20.34		
15	16QAM	75	0	20.37	20.40	20.39		
Channel				26090	26340	26640	Tune-up limit (dBm)	MPR (dB)
Frequency (MHz)				1855	1880	1910		
10	QPSK	1	0	21.09	20.90	20.97	21.5	0
10	QPSK	1	25	21.01	20.95	21.13		
10	QPSK	1	49	20.80	20.73	20.87		
10	QPSK	25	0	20.89	20.74	20.97	21.5	0
10	QPSK	25	12	20.82	20.77	20.88		
10	QPSK	25	25	20.83	20.78	20.95		
10	QPSK	50	0	20.89	20.77	20.96		
10	16QAM	1	0	21.20	21.15	21.17	21.5	0
10	16QAM	1	25	21.20	21.20	21.17		
10	16QAM	1	49	21.08	20.99	21.16		
10	16QAM	25	0	20.38	20.23	20.43	20.5	1
10	16QAM	25	12	20.37	20.28	20.40		
10	16QAM	25	25	20.35	20.26	20.46		
10	16QAM	50	0	20.35	20.29	20.45		



Channel				26065	26340	26665	Tune-up limit (dBm)	MPR (dB)
Frequency (MHz)				1852.5	1880	1912.5		
5	QPSK	1	0	20.99	20.83	21.05	21.5	0
5	QPSK	1	12	20.94	20.78	20.86		
5	QPSK	1	24	20.83	20.75	20.96		
5	QPSK	12	0	20.84	20.76	20.81	21.5	0
5	QPSK	12	7	20.96	20.89	20.93		
5	QPSK	12	13	20.79	20.80	20.83		
5	QPSK	25	0	20.91	20.80	20.87		
5	16QAM	1	0	21.18	21.10	21.18	21.5	0
5	16QAM	1	12	21.20	21.18	21.17		
5	16QAM	1	24	21.15	21.09	21.10		
5	16QAM	12	0	20.46	20.37	20.44	20.5	1
5	16QAM	12	7	20.48	20.43	20.49		
5	16QAM	12	13	20.34	20.37	20.43		
5	16QAM	25	0	20.41	20.33	20.43		
Channel				26055	26340	26675	Tune-up limit (dBm)	MPR (dB)
Frequency (MHz)				1851.5	1880	1913.5		
3	QPSK	1	0	20.94	20.82	21.12	21.5	0
3	QPSK	1	8	20.88	20.77	21.08		
3	QPSK	1	14	20.86	20.69	21.00		
3	QPSK	8	0	20.90	20.81	21.02	21.5	0
3	QPSK	8	4	20.98	20.81	21.07		
3	QPSK	8	7	20.81	20.77	20.96		
3	QPSK	15	0	20.88	20.79	20.98		
3	16QAM	1	0	21.12	21.02	21.21	21.5	0
3	16QAM	1	8	21.17	21.03	21.18		
3	16QAM	1	14	21.13	20.99	21.14		
3	16QAM	8	0	20.45	20.40	20.47	20.5	1
3	16QAM	8	4	20.49	20.35	20.48		
3	16QAM	8	7	20.35	20.34	20.48		
3	16QAM	15	0	20.40	20.32	20.38		
Channel				26047	26340	26683	Tune-up limit (dBm)	MPR (dB)
Frequency (MHz)				1850.7	1880	1914.3		
1.4	QPSK	1	0	20.83	20.80	21.04	21.5	0
1.4	QPSK	1	3	20.94	20.85	20.97		
1.4	QPSK	1	5	20.96	20.71	20.92		
1.4	QPSK	3	0	20.83	20.71	20.91		
1.4	QPSK	3	1	20.92	20.74	20.78		
1.4	QPSK	3	3	20.85	20.71	20.85		
1.4	QPSK	6	0	20.85	20.73	20.78	21.5	0
1.4	16QAM	1	0	21.10	21.06	21.21	21.5	0
1.4	16QAM	1	3	21.13	21.06	21.20		
1.4	16QAM	1	5	21.18	20.99	21.18		
1.4	16QAM	3	0	20.90	20.82	20.94		
1.4	16QAM	3	1	21.01	20.77	21.06		
1.4	16QAM	3	3	20.88	20.83	20.98		
1.4	16QAM	6	0	20.49	20.34	20.41	20.5	1



<LTE Band 26>

BW [MHz]	Modulation	RB Size	RB Offset	Power Low Ch. / Freq.	Power Middle Ch. / Freq.	Power High Ch. / Freq.	Tune-up limit (dBm)	MPR (dB)
Channel				26765	26865	26965		
Frequency (MHz)				821.5	831.5	841.5		
15	QPSK	1	0	21.36	21.86	21.35		
15	QPSK	1	37	21.25	21.80	21.36	23	0
15	QPSK	1	74	21.17	21.68	21.27		
15	QPSK	36	0	21.33	21.80	21.30		
15	QPSK	36	20	21.31	21.77	21.38	23	0
15	QPSK	36	39	21.22	21.70	21.33		
15	QPSK	75	0	21.28	21.73	21.30		
15	16QAM	1	0	21.75	21.58	21.50	23	0
15	16QAM	1	37	21.62	21.43	21.42		
15	16QAM	1	74	21.41	21.38	21.50		
15	16QAM	36	0	20.38	20.64	20.31	22	1
15	16QAM	36	20	20.32	20.54	20.29		
15	16QAM	36	39	20.20	20.42	20.19		
15	16QAM	75	0	20.28	20.53	20.30		
Channel				26740	26865	26990	Tune-up limit (dBm)	MPR (dB)
Frequency (MHz)				819	831.5	844		
10	QPSK	1	0	21.44	21.73	21.35	23	0
10	QPSK	1	25	21.44	21.76	21.38		
10	QPSK	1	49	21.16	21.52	21.21		
10	QPSK	25	0	21.27	21.64	21.32	23	0
10	QPSK	25	12	21.24	21.56	21.27		
10	QPSK	25	25	21.21	21.52	21.29		
10	QPSK	50	0	21.28	21.63	21.27	23	0
10	16QAM	1	0	21.75	21.54	21.69		
10	16QAM	1	25	21.60	21.49	21.69		
10	16QAM	1	49	21.43	21.46	21.61	22	1
10	16QAM	25	0	20.27	20.66	20.27		
10	16QAM	25	12	20.26	20.54	20.27		
10	16QAM	25	25	20.17	20.51	20.27		
10	16QAM	50	0	20.22	20.59	20.23		
Channel				26715	26865	27015	Tune-up limit (dBm)	MPR (dB)
Frequency (MHz)				816.5	831.5	846.5		
5	QPSK	1	0	21.26	21.78	21.44	23	0
5	QPSK	1	12	21.16	21.67	21.30		
5	QPSK	1	24	21.15	21.61	21.30		
5	QPSK	12	0	21.25	21.74	21.27	23	0
5	QPSK	12	7	21.30	21.72	21.33		
5	QPSK	12	13	21.18	21.62	21.25		
5	QPSK	25	0	21.26	21.66	21.33	23	0
5	16QAM	1	0	21.53	21.62	21.61		
5	16QAM	1	12	21.74	21.57	21.74		
5	16QAM	1	24	21.43	21.51	21.59	22	1
5	16QAM	12	0	20.22	20.73	20.27		
5	16QAM	12	7	20.29	20.69	20.36		
5	16QAM	12	13	20.15	20.61	20.32		
5	16QAM	25	0	20.28	20.73	20.28		



Channel				26705	26865	27025	Tune-up limit (dBm)	MPR (dB)
Frequency (MHz)				815.5	831.5	847.5		
3	QPSK	1	0	21.56	21.71	21.27	23	0
3	QPSK	1	8	21.18	21.36	21.22		
3	QPSK	1	14	21.13	21.31	21.26		
3	QPSK	8	0	21.39	21.66	21.33	23	0
3	QPSK	8	4	21.37	21.61	21.34		
3	QPSK	8	7	21.25	21.43	21.26		
3	QPSK	15	0	21.27	21.50	21.34		
3	16QAM	1	0	21.52	21.59	21.51	23	0
3	16QAM	1	8	21.56	21.57	21.58		
3	16QAM	1	14	21.41	21.44	21.57		
3	16QAM	8	0	20.35	20.87	20.34	22	1
3	16QAM	8	4	20.32	20.85	20.35		
3	16QAM	8	7	20.29	20.77	20.34		
3	16QAM	15	0	20.27	20.76	20.30		
Channel				26697	26865	27033	Tune-up limit (dBm)	MPR (dB)
Frequency (MHz)				814.7	831.5	848.3		
1.4	QPSK	1	0	21.14	21.63	21.16	23	0
1.4	QPSK	1	3	21.10	21.56	21.14		
1.4	QPSK	1	5	21.04	21.44	21.15		
1.4	QPSK	3	0	21.15	21.39	21.01		
1.4	QPSK	3	1	21.09	21.49	21.07		
1.4	QPSK	3	3	21.03	21.44	21.08		
1.4	QPSK	6	0	21.00	21.39	21.04	23	0
1.4	16QAM	1	0	21.47	21.77	21.48	23	0
1.4	16QAM	1	3	21.41	21.76	21.52		
1.4	16QAM	1	5	21.44	21.76	21.43		
1.4	16QAM	3	0	21.02	21.49	21.13		
1.4	16QAM	3	1	21.02	21.55	21.14		
1.4	16QAM	3	3	21.09	21.54	21.13		
1.4	16QAM	6	0	20.36	20.81	20.44	22	1

<TDD LTE SAR Measurement>

TDD LTE configuration setup for SAR measurement

SAR was tested with a fixed periodic duty factor according to the highest transmission duty factor implemented for the device and supported by 3GPP.

- a. 3GPP TS 36.211 section 4.2 for Type 2 Frame Structure and Table 4.2-2 for uplink-downlink configurations
- b. "special subframe S" contains both uplink and downlink transmissions, it has been taken into consideration to determine the transmission duty factor according to the worst case uplink and downlink cyclic prefix requirements for UpPTS
- c. Establishing connections with base station simulators ensure a consistent means for testing SAR and recommended for evaluating SAR. The Anritsu MT8820C (firmware: #22.52#004) was used for LTE output power measurements and SAR testing.

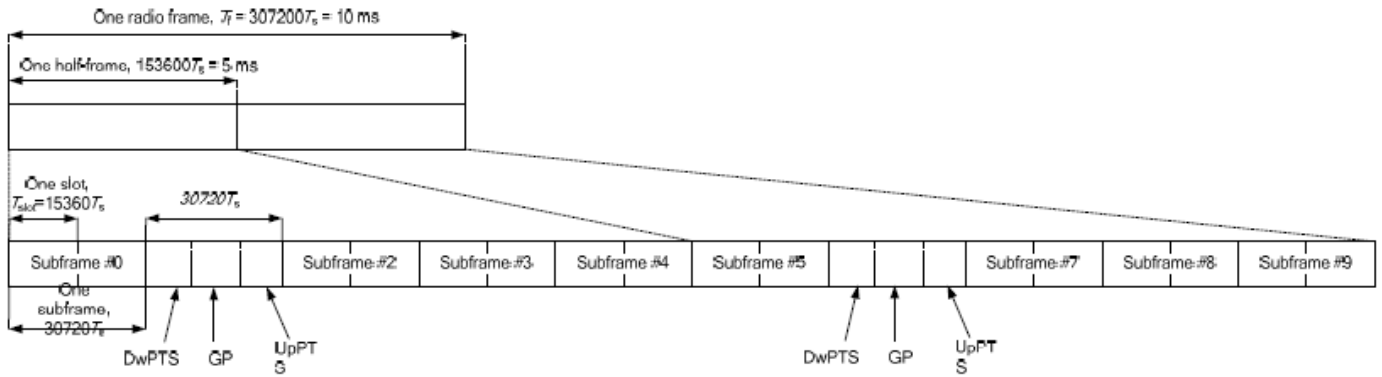


Figure 4.2-1: Frame structure type 2 (for 5 ms switch-point periodicity).

Table 4.2-2: Uplink-downlink configurations.

Uplink-downlink configuration	Downlink-to-Uplink Switch-point periodicity	Subframe number									
		0	1	2	3	4	5	6	7	8	9
0	5 ms	D	S	U	U	U	D	S	U	U	U
1	5 ms	D	S	U	U	D	D	S	U	U	D
2	5 ms	D	S	U	D	D	D	S	U	D	D
3	10 ms	D	S	U	U	U	D	D	D	D	D
4	10 ms	D	S	U	U	D	D	D	D	D	D
5	10 ms	D	S	U	D	D	D	D	D	D	D
6	5 ms	D	S	U	U	U	D	S	U	U	D

Table 4.2-1: Configuration of special subframe (lengths of DwPTS/GP/UpPTS).

Special subframe configuration	Normal cyclic prefix in downlink			Extended cyclic prefix in downlink				
	DwPTS	UpPTS		DwPTS	UpPTS			
		Normal cyclic prefix in uplink	Extended cyclic prefix in uplink		Normal cyclic prefix in uplink	Extended cyclic prefix in uplink		
0	6592 · Ts	2192 · Ts	2560 · Ts	7680 · Ts	2192 · Ts	2560 · Ts		
1	19760 · Ts			20480 · Ts				
2	21952 · Ts			23040 · Ts				
3	24144 · Ts			25600 · Ts				
4	26336 · Ts			7680 · Ts				
5	6592 · Ts	4384 · Ts	5120 · Ts	20480 · Ts	4384 · Ts	5120 · Ts		
6	19760 · Ts			23040 · Ts				
7	21952 · Ts			12800 · Ts				
8	24144 · Ts			-			-	-
9	13168 · Ts			-			-	-

Special subframe (30720·T_s): Normal cyclic prefix in downlink (UpPTS)			
	Special subframe configuration	Normal cyclic prefix in uplink	Extended cyclic prefix in uplink
Uplink duty factor in one special subframe	0~4	7.13%	8.33%
	5~9	14.3%	16.7%

Special subframe(30720·T_s): Extended cyclic prefix in downlink (UpPTS)			
	Special subframe configuration	Normal cyclic prefix in uplink	Extended cyclic prefix in uplink
Uplink duty factor in one special subframe	0~3	7.13%	8.33%
	4~7	14.3%	16.7%

The highest duty factor is resulted from:

- i. Uplink-downlink configuration: 0. In a half-frame consisted of 5 subframes, uplink operation is in 3 uplink subframes and 1 special subframe.
- ii. special subframe configuration: 5-9 for normal cyclic prefix in downlink, 4-7 for extended cyclic prefix in downlink
- iii. for special subframe with extended cyclic prefix in uplink, the total uplink duty factor in one half-frame is: $(3+0.167)/5 = 63.3\%$
- iv. for special subframe with normal cyclic prefix in uplink, the total uplink duty factor in one half-frame is: $(3+0.143)/5 = 62.9\%$
- v. For TDD LTE SAR measurement, the duty cycle 1:1.59 (62.9 %) was used perform testing and considering the theoretical duty cycle of 63.3% for extended cyclic prefix in the uplink, and the theoretical duty cycle of 62.9% for normal cyclic prefix in uplink, a scaling factor of extended cyclic prefix $63.3\%/62.9\% = 1.006$ is applied to scale-up the measured SAR result. The scaled TDD LTE SAR = measured SAR (W/kg)* Tune-up Scaling Factor* scaling factor for extended cyclic prefix.



<LTE Band 41>

BW [MHz]	Modulation	RB Size	RB Offset	Power Low Ch. / Freq.	Power Low Middle Ch. / Freq.	Power Middle Ch. / Freq.	Power High Middle Ch. / Freq.	Power High Ch. / Freq.	Tune-up limit (dBm)	MPR (dB)
Channel				39750	40185	40620	41055	41490		
Frequency (MHz)				2506	2549.5	2593	2636.5	2680		
20	QPSK	1	0	21.53	21.54	21.65	21.57	21.62	23	0
20	QPSK	1	49	21.43	21.38	21.54	21.43	21.53		
20	QPSK	1	99	21.40	21.36	21.43	21.46	21.48		
20	QPSK	50	0	20.65	20.35	20.73	20.64	20.72	22	1
20	QPSK	50	24	20.68	20.39	20.69	20.41	20.71		
20	QPSK	50	50	20.64	20.38	20.64	20.61	20.66		
20	QPSK	100	0	20.62	20.37	20.67	20.40	20.66		
20	16QAM	1	0	20.62	20.55	20.42	20.36	20.85	22	1
20	16QAM	1	49	20.73	20.43	20.62	20.47	20.76		
20	16QAM	1	99	20.55	20.38	20.53	20.59	20.82		
20	16QAM	50	0	19.64	19.41	19.42	19.42	19.73	21	2
20	16QAM	50	24	19.76	19.42	19.68	19.50	19.80		
20	16QAM	50	50	19.70	19.40	19.62	19.62	19.75		
20	16QAM	100	0	19.75	19.39	19.62	19.40	19.73		
Channel				39725	40173	40620	41068	41515	Tune-up limit (dBm)	MPR (dB)
Frequency (MHz)				2503.5	2548.3	2593	2637.8	2682.5		
15	QPSK	1	0	21.54	21.29	21.38	21.23	21.58	23	0
15	QPSK	1	37	21.53	21.48	21.38	21.43	21.60		
15	QPSK	1	74	21.27	21.29	21.25	21.17	21.25		
15	QPSK	36	0	20.49	20.30	20.21	20.23	20.56	22	1
15	QPSK	36	20	20.47	20.21	20.17	20.26	20.43		
15	QPSK	36	39	20.35	20.09	20.07	20.22	20.34		
15	QPSK	75	0	20.38	20.17	20.15	20.21	20.47		
15	16QAM	1	0	20.39	20.29	20.42	20.25	20.50	22	1
15	16QAM	1	37	20.49	20.08	20.34	20.42	20.51		
15	16QAM	1	74	20.11	20.05	20.02	20.05	20.39		
15	16QAM	36	0	19.53	19.22	19.17	19.24	19.44	21	2
15	16QAM	36	20	19.42	19.28	19.21	19.22	19.48		
15	16QAM	36	39	19.25	19.07	19.06	19.12	19.27		
15	16QAM	75	0	19.32	19.14	19.14	19.20	19.35		
Channel				39700	40160	40620	41080	41540	Tune-up limit (dBm)	MPR (dB)
Frequency (MHz)				2501	2547	2593	2639	2685		
10	QPSK	1	0	21.55	21.28	21.26	21.26	21.29	23	0
10	QPSK	1	25	21.64	21.30	21.29	21.38	21.23		
10	QPSK	1	49	21.46	21.22	21.24	21.21	21.22		
10	QPSK	25	0	20.53	20.15	20.15	20.34	20.26	22	1
10	QPSK	25	12	20.62	20.13	20.19	20.34	20.25		
10	QPSK	25	25	20.39	20.14	20.19	20.27	20.23		
10	QPSK	50	0	20.53	20.06	20.12	20.31	20.26		
10	16QAM	1	0	20.71	20.22	20.27	20.52	20.39	22	1
10	16QAM	1	25	20.65	20.32	20.33	20.55	20.48		
10	16QAM	1	49	20.54	20.25	20.24	20.33	20.26		
10	16QAM	25	0	19.60	19.27	19.14	19.41	19.31	21	2
10	16QAM	25	12	19.62	19.22	19.22	19.43	19.35		
10	16QAM	25	25	19.39	19.22	19.27	19.28	19.20		
10	16QAM	50	0	19.54	19.06	19.08	19.40	19.35		



Channel				39675	40148	40620	41093	41565	Tune-up limit (dBm)	MPR (dB)
Frequency (MHz)				2498.5	2545.8	2593	2640.30	2687.5		
5	QPSK	1	0	21.36	21.16	21.16	21.16	21.13	23	0
5	QPSK	1	12	21.38	21.25	21.14	21.13	21.13		
5	QPSK	1	24	21.33	21.06	21.08	21.04	21.02		
5	QPSK	12	0	20.56	20.19	20.17	20.32	20.34	22	1
5	QPSK	12	7	20.62	20.28	20.17	20.32	20.34		
5	QPSK	12	13	20.53	20.14	20.13	20.25	20.26		
5	QPSK	25	0	20.54	20.19	20.15	20.31	20.27		
5	16QAM	1	0	20.66	20.29	20.27	20.53	20.45	22	1
5	16QAM	1	12	20.74	20.53	20.27	20.45	20.60		
5	16QAM	1	24	20.64	20.26	20.32	20.47	20.49		
5	16QAM	12	0	19.50	19.17	19.16	19.32	19.30	21	2
5	16QAM	12	7	19.55	19.24	19.19	19.39	19.34		
5	16QAM	12	13	19.53	19.13	19.08	19.27	19.27		
5	16QAM	25	0	19.54	19.21	19.18	19.31	19.28		



<LTE Carrier Aggregation>

General Note:

1. This device supports Carrier Aggregation on downlink only for inter and intra band, Uplink CA is not supported. For the device supports bands and bandwidths and configurations are provided as follow table was according to 3GPP.
2. All permutations exist. No restrictions on Pcell & Scell combinations. Only LTE Band 29A is limited to Scell.

<Inter-Band combination>

E-UTRA CA Configuration	E-UTRA Bands	1.4 MHz	3 MHz	5 MHz	10 MHz	15 MHz	20 MHz	Maximum aggregated bandwidth [MHz]	Bandwidth combination set
CA_2A-5A	2			Yes	Yes	Yes	Yes	30	0
	5			Yes	Yes				
CA_2A-5A	2			Yes	Yes			20	1
	5			Yes	Yes				
CA_2A-12A	2			Yes	Yes	Yes	Yes	30	0
	12			Yes	Yes				
CA_2A-12A	2			Yes	Yes	Yes	Yes	30	1
	12		Yes	Yes	Yes				
CA_2A-12A	2			Yes	Yes			20	2
	12			Yes	Yes				
CA_2A-13A	2			Yes	Yes	Yes	Yes	30	0
	13				Yes				
CA_2A-13A	2			Yes	Yes			20	1
	13				Yes				
CA_2A-29A	2			Yes	Yes			20	0
	29		Yes	Yes	Yes				
	2			Yes	Yes			20	1
	29			Yes	Yes				
	2				Yes	Yes	Yes	Yes	30
29				Yes	Yes				
CA_4A-5A	4			Yes	Yes			20	0
	5			Yes	Yes				
CA_4A-5A	4			Yes	Yes	Yes	Yes	30	1
	5			Yes	Yes				
CA_4A-12A	4	Yes	Yes	Yes	Yes			20	0
	12			Yes	Yes				
CA_4A-12A	4	Yes	Yes	Yes	Yes	Yes	Yes	30	1
	12			Yes	Yes				
CA_4A-12A	4			Yes	Yes	Yes	Yes	30	2
	12		Yes	Yes	Yes				
CA_4A-12A	4			Yes	Yes			20	3
	12			Yes	Yes				
CA_4A-12A	4			Yes	Yes	Yes	Yes	30	4
	12			Yes	Yes				
CA_4A-12A	4			Yes	Yes	Yes		20	5
	12			Yes					
CA_4A-13A	4			Yes	Yes	Yes	Yes	30	0
	13				Yes				
CA_4A-13A	4			Yes	Yes			20	1
	13				Yes				
CA_4A-29A	4			Yes	Yes			20	0
	29		Yes	Yes	Yes				
CA_4A-29A	4			Yes	Yes			20	1
	29			Yes	Yes				
CA_4A-29A	4			Yes	Yes	Yes	Yes	30	2
	29			Yes	Yes				

<Intra-Band combination>

E-UTRA CA Configuration	Channel bandwidths for carrier [MHz]	Channel bandwidths for carrier [MHz]	Maximum aggregated bandwidth [MHz]	Bandwidth combination set
CA_2C	5	20	40	0
	10	15,20		
	15	10,15,20		
	20	5,10,15,20		
CA_7C	15	15	40	0
	20	20	40	1
	10	20		
	15	15,20	40	2
	20	10,15,20		
	15	10,15	40	2
CA_41C	10	20	40	0
	15	15,20		
	20	10,15,20		
	5,10	20	40	1
	15	15,20		
	20	5,10,15,20		
CA_2A-2A	5,10,15,20	5,10,15,20	40	0
CA_4A-4A	5,10,15,20	5,10,15,20	40	0
	5,10	5,10	20	1
CA_7A-7A	5	15	40	0
	10	10,15		
	15	15,20		
	20	20		
	5,10,15,20	5,10,15,20	40	1
	5, 10, 15, 20	5, 10	30	2
10, 15, 20	10, 15, 20	40	3	
CA_41A-41A	10,15,20	10,15,20	40	0
	5,10,15,20	5,10,15,20	40	1



LTE Carrier Aggregation Conducted Power

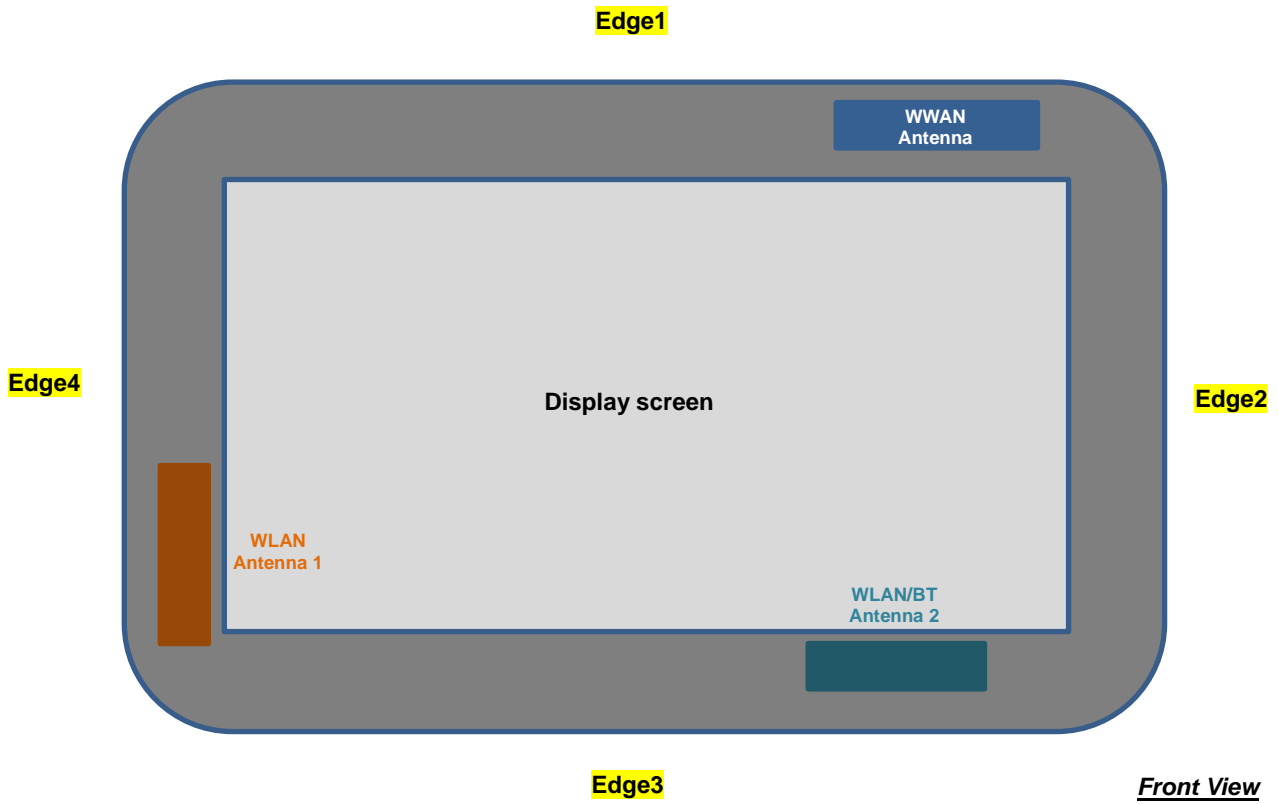
General Note:

- i. According to KDB941225 D05A v01r02, Uplink maximum output power measurement with downlink carrier aggregation active should be measured, using the highest output channel measured without downlink carrier aggregation, to confirm that uplink maximum output power with downlink carrier aggregation active remains within the specified tune-up tolerance limits and not more than ¼ dB higher than the maximum output measured without downlink carrier aggregation active.
- ii. Uplink maximum output power with downlink carrier aggregation active does not show more than ¼ dB higher than the maximum output power without downlink carrier aggregation active, therefore SAR evaluation with downlink carrier aggregation active can be excluded.
- iii. The device supports downlink carrier aggregation only. Uplink carrier aggregation is not supported. For power measurement were control and acknowledge data is sent on uplink channels that operate identical to specifications when downlink carrier aggregation is inactive.
- iv. Selected highest measured power when downlink carrier aggregation is inactive for conducted power comparison with downlink carrier aggregation is active, to confirm that when downlink carrier aggregation is active uplink maximum output power remains within the specified tune-up tolerance limits and not more than ¼ dB higher than the maximum output power measured when downlink carrier aggregation inactive.
- v. For non-contiguous intra-band CA, the SCC selected to provide maximum separation from the PCC and must remain fully within the downlink transmission band.
- vi. For inter-band CA, the SCC selected highest bandwidth and near the middle of its transmission band.
- vii. For Intra-band, contiguous CA, the downlink channels selected to perform the uplink power measurement must satisfy 3GPP channel spacing (5.4.1A of 3GPP TS 36.521 or equivalent) and channel bandwidth (5.4.2A) requirements.

$$\text{Nominal channel spacing} = \left\lceil \frac{BW_{\text{Channel}(1)} + BW_{\text{Channel}(2)} - 0.1|BW_{\text{Channel}(1)} - BW_{\text{Channel}(2)}|}{0.6} \right\rceil 0.3 \text{ [MHz]}$$

Configure	PCC							SCC				Power		
	LTE Band	BW (MHz)	UL Freq. (MHz)	UL Channel	Mod.	UL# RB	UL RB Offset	LTE Band	BW (MHz)	DL Freq. (MHz)	DL Channel	With CA Tx.Power (dBm)	W/O CA Tx.Power (dBm)	
Inter-Band	Band 2	20	1860	18700	QPSK	1	0	Band 5	10	881.5	2525	22.96	22.97	
	Band 5	10	829	20450	QPSK	1	0	Band 2	20	1960	900	22.51	22.53	
	Band 2	20	1860	18700	QPSK	1	0	Band 12	10	737.5	5095	22.96	22.97	
	Band 12	10	707.5	23095	QPSK	1	0	Band 2	20	1960	900	22.43	23.43	
	Band 2	20	1860	18700	QPSK	1	0	Band 13	10	751	5230	22.95	22.97	
	Band 13	10	782	23230	QPSK	1	0	Band 2	20	1960	900	22.53	22.55	
	Band 2	20	1860	18700	QPSK	1	0	Band 29	10	722.5	9715	22.96	22.97	
	Band 4	20	1720	20050	QPSK	1	0	Band 5	10	881.5	2525	22.93	22.95	
	Band 5	10	829	20450	QPSK	1	0	Band 4	20	2132.5	2175	22.52	22.53	
	Band 4	20	1720	20050	QPSK	1	0	Band 12	10	737.5	5095	22.94	22.95	
	Band 12	10	707.5	23095	QPSK	1	0	Band 4	20	2132.5	2175	22.41	23.43	
	Band 4	20	1720	20050	QPSK	1	0	Band 13	10	751	5230	22.93	22.95	
	Band 13	10	782	23230	QPSK	1	0	Band 4	20	2132.5	2175	22.52	22.55	
	Band 4	20	1720	20050	QPSK	1	0	Band 29	10	722.5	9715	22.92	22.95	
Intra-Band	Non-Contiguous	Band 2	20	1860	18700	QPSK	1	0	Band 2	5	1987.5	1175	22.96	22.97
		Band 4	20	1720	20050	QPSK	1	0	Band 4	5	2152.5	2375	22.94	22.95
		Band 7	20	2560	21350	QPSK	1	0	Band 7	5	2622.5	2775	21.52	21.54
	Contiguous	Band 41	20	2593	40620	QPSK	1	0	Band 41	5	2687.5	3425	21.63	21.65
		Band 2	20	1860	18700	QPSK	1	0	Band 2	20	1959.8	898	22.96	22.97
		Band 7	20	2560	21350	QPSK	1	0	Band 7	20	2660.2	3152	21.54	21.54
		Band 41	20	2593	40620	QPSK	1	0	Band 41	20	2612.8	40818	21.64	21.65

14. Antenna Location



The separation distance for antenna to edge:

Antenna	To Edge1 (mm)	To Edge2 (mm)	To Edge3 (mm)	To Edge4 (mm)
WWAN Antenna	<5	25	193	194
WLAN Antenna 1	148	302	25	6
WLAN Antenna 2	204	80	5	203



15. SAR Test Results

General Note:

1. Per KDB 447498 D01v06, the reported SAR is the measured SAR value adjusted for maximum tune-up tolerance.
 - a. Tune-up scaling Factor = tune-up limit power (mW) / EUT RF power (mW), where tune-up limit is the maximum rated power among all production units.
 - b. For SAR testing of WLAN signal with non-100% duty cycle, the measured SAR is scaled-up by the duty cycle scaling factor which is equal to "1/(duty cycle)"
 - c. For WWAN: Reported SAR(W/kg)= Measured SAR(W/kg)*Tune-up Scaling Factor
 - d. For TDD LTE SAR measurement, the duty cycle 1:1.59 (62.9 %) was used perform testing and considering the theoretical duty cycle of 63.3% for extended cyclic prefix in the uplink, and the theoretical duty cycle of 62.9% for normal cyclic prefix in uplink, a scaling factor of extended cyclic prefix 63.3%/62.9% = 1.006 is applied to scale-up the measured SAR result.
The Reported TDD LTE SAR = measured SAR (W/kg)* Tune-up Scaling Factor* scaling factor for extended cyclic prefix.
2. Per KDB 447498 D01v06, for each exposure position, testing of other required channels within the operating mode of a frequency band is not required when the *reported* 1-g or 10-g SAR for the mid-band or highest output power channel is:
 - ≤ 0.8 W/kg or 2.0 W/kg, for 1-g or 10-g respectively, when the transmission band is ≤ 100 MHz
 - ≤ 0.6 W/kg or 1.5 W/kg, for 1-g or 10-g respectively, when the transmission band is between 100 MHz and 200 MHz
 - ≤ 0.4 W/kg or 1.0 W/kg, for 1-g or 10-g respectively, when the transmission band is ≥ 200 MHz
3. For the exposure positions that proximity sensor power reduction is applied for SAR compliance, additional SAR testing with EUT transmitting full power in normal mode was performed; 10mm for bottom face.

UMTS Note:

1. Per KDB 941225 D01v03r01, for SAR testing is measured using a 12.2 kbps RMC with TPC bits configured to all "1's".
2. Per KDB 941225 D01v03r01, RMC 12.2kbps setting is used to evaluate SAR. The maximum output power and tune-up tolerance specified for production units in HSDPA / HSUPA / DC-HSDPA is $\leq 1/4$ dB higher than RMC 12.2Kbps or when the highest reported SAR of the RMC12.2Kbps is scaled by the ratio of specified maximum output power and tune-up tolerance of HSDPA / HSUPA / DC-HSDPA to RMC12.2Kbps and the adjusted SAR is ≤ 1.2 W/kg, SAR measurement is not required for HSDPA / HSUPA / DC-HSDPA, and according to the following RF output power, the output power results of the secondary modes (HSUPA, HSDPA, DC-HSDPA) are less than $1/4$ dB higher than the primary modes; therefore, SAR measurement is not required for HSDPA / HSUPA / DC-HSDPA.



LTE Note:

1. Per KDB 941225 D05v02r05, start with the largest channel bandwidth and measure SAR for QPSK with 1 RB allocation, using the RB offset and required test channel combination with the highest maximum output power for RB offsets at the upper edge, middle and lower edge of each required test channel.
2. Per KDB 941225 D05v02r05, 50% RB allocation for QPSK SAR testing follows 1RB QPSK allocation procedure.
3. Per KDB 941225 D05v02r05, For QPSK with 100% RB allocation, SAR is not required when the highest maximum output power for 100 % RB allocation is less than the highest maximum output power in 50% and 1 RB allocations and the highest reported SAR for 1 RB and 50% RB allocation are ≤ 0.8 W/kg. Otherwise, SAR is measured for the highest output power channel; and if the reported SAR is > 1.45 W/kg, the remaining required test channels must also be tested.
4. Per KDB 941225 D05v02r05, 16QAM output power for each RB allocation configuration is $> \text{not } \frac{1}{2}$ dB higher than the same configuration in QPSK and the reported SAR for the QPSK configuration is ≤ 1.45 W/kg; Per KDB 941225 D05v02r05, 16QAM SAR testing is not required.
5. Per KDB 941225 D05v02r05, Smaller bandwidth output power for each RB allocation configuration is $> \text{not } \frac{1}{2}$ dB higher than the same configuration in the largest supported bandwidth, and the reported SAR for the largest supported bandwidth is ≤ 1.45 W/kg; Per KDB 941225 D05v02r05, smaller bandwidth SAR testing is not required.
6. For LTE B12 / B26 / B4 the maximum bandwidth does not support three non-overlapping channels, per KDB 941225 D05v02r05, when a device supports overlapping channel assignment in a channel bandwidth configuration, the middle channel of the group of overlapping channels should be selected for testing.
7. LTE band 2/5 SAR test was covered by Band 25/26; according to TCB workshop, SAR test for overlapping LTE bands can be reduced if
 - a. The maximum output power, including tolerance, for the smaller band is \leq the larger band to qualify for the SAR test exclusion.
 - b. The channel bandwidth and other operating parameters for the smaller band are fully supported by the larger band.

15.1 Body SAR

<WCDMA SAR>

Plot No.	Band	Mode	Test Position	Gap (mm)	SKU	Power Reduction	Ch.	Freq. (MHz)	Average Power (dBm)	Tune-Up Limit (dBm)	Power Drift (dB)	Measured 1g SAR (W/kg)	Reported 1g SAR (W/kg)
01	WCDMA II	RMC 12.2Kbps	Bottom Face	0mm	SKU A	ON	9538	1907.6	19.54	21.00	0.14	0.830	1.162
	WCDMA II	RMC 12.2Kbps	Bottom Face	0mm	SKU A	ON	9262	1852.4	19.55	21.00	0.07	0.753	1.051
	WCDMA II	RMC 12.2Kbps	Bottom Face	0mm	SKU A	ON	9400	1880	19.58	21.00	0.01	0.775	1.075
	WCDMA II	RMC 12.2Kbps	Bottom Face	0mm	SKU B	ON	9538	1907.6	19.54	21.00	-0.04	0.826	1.156
	WCDMA II	RMC 12.2Kbps	Bottom Face	0mm	SKU B	ON	9262	1852.4	19.55	21.00	-0.01	0.791	1.105
	WCDMA II	RMC 12.2Kbps	Bottom Face	0mm	SKU B	ON	9400	1880	19.58	21.00	-0.17	0.815	1.130
02	WCDMA IV	RMC 12.2Kbps	Bottom Face	0mm	SKU A	ON	1413	1732.6	21.80	23.00	-0.15	0.705	0.929
	WCDMA IV	RMC 12.2Kbps	Bottom Face	0mm	SKU A	ON	1312	1712.4	21.71	23.00	-0.04	0.669	0.900
	WCDMA IV	RMC 12.2Kbps	Bottom Face	0mm	SKU A	ON	1513	1752.6	21.74	23.00	-0.01	0.673	0.900
	WCDMA IV	RMC 12.2Kbps	Bottom Face	0mm	SKU B	ON	1413	1732.6	21.80	23.00	-0.14	0.690	0.910
	WCDMA IV	RMC 12.2Kbps	Bottom Face	0mm	SKU B	ON	1312	1712.4	21.71	23.00	-0.01	0.674	0.907
	WCDMA IV	RMC 12.2Kbps	Bottom Face	0mm	SKU B	ON	1513	1752.6	21.74	23.00	-0.03	0.675	0.902
03	WCDMA V	RMC 12.2Kbps	Bottom Face	0mm	SKU A	ON	4132	826.4	21.52	23.00	-0.09	0.713	1.003
	WCDMA V	RMC 12.2Kbps	Bottom Face	0mm	SKU A	ON	4182	836.4	21.43	23.00	-0.01	0.697	1.001
	WCDMA V	RMC 12.2Kbps	Bottom Face	0mm	SKU A	ON	4233	846.6	21.45	23.00	-0.03	0.679	0.970
	WCDMA V	RMC 12.2Kbps	Bottom Face	0mm	SKU B	ON	4132	826.4	21.52	23.00	-0.07	0.642	0.903
	WCDMA V	RMC 12.2Kbps	Bottom Face	0mm	SKU B	ON	4182	836.4	21.43	23.00	-0.01	0.621	0.891
	WCDMA V	RMC 12.2Kbps	Bottom Face	0mm	SKU B	ON	4233	846.6	21.45	23.00	-0.19	0.619	0.884



<LTE SAR>

Plot No.	Band	BW (MHz)	Modulation	RB Size	RB offset	Test Position	Gap (mm)	SKU	Power Reduction	Ch.	Freq. (MHz)	Average Power (dBm)	Tune-Up Limit (dBm)	Power Drift (dB)	Measured 1g SAR (W/kg)	Reported 1g SAR (W/kg)
04	LTE Band 4	20M	QPSK	1	0	Bottom Face	0mm	SKU A	ON	20175	1732.5	21.85	23.00	-0.1	0.699	0.911
	LTE Band 4	20M	QPSK	1	0	Bottom Face	0mm	SKU B	ON	20175	1732.5	21.85	23.00	-0.14	0.690	0.899
05	LTE Band 7	20M	QPSK	1	0	Edge 1	0mm	SKU A	OFF	21350	2560	21.54	23.00	-0.03	0.316	0.442
	LTE Band 7	20M	QPSK	1	0	Edge 1	0mm	SKU A	OFF	20850	2510	21.26	23.00	-0.06	0.277	0.414
	LTE Band 7	20M	QPSK	1	0	Edge 1	0mm	SKU A	OFF	21100	2535	21.45	23.00	-0.01	0.284	0.406
	LTE Band 7	20M	QPSK	1	0	Edge 1	0mm	SKU B	OFF	21350	2560	21.54	23.00	0.15	0.309	0.432
	LTE Band 7	20M	QPSK	1	0	Edge 1	0mm	SKU B	OFF	20850	2510	21.26	23.00	0.01	0.293	0.437
	LTE Band 7	20M	QPSK	1	0	Edge 1	0mm	SKU B	OFF	21100	2535	21.45	23.00	0.02	0.305	0.436
06	LTE Band 12	10M	QPSK	1	0	Bottom Face	0mm	SKU A	OFF	23095	707.5	23.43	24.00	0.02	0.681	0.777
	LTE Band 12	10M	QPSK	1	0	Bottom Face	0mm	SKU B	OFF	23095	707.5	23.43	24.00	0.12	0.601	0.685
07	LTE Band 13	10M	QPSK	25	0	Bottom Face	0mm	SKU A	ON	23230	782	20.36	22.00	-0.08	0.669	0.976
	LTE Band 13	10M	QPSK	25	0	Bottom Face	0mm	SKU B	ON	23230	782	20.36	22.00	-0.07	0.646	0.942
08	LTE Band 25	20M	QPSK	1	0	Bottom Face	0mm	SKU A	ON	26590	1905	21.29	21.50	0.11	0.988	1.037
	LTE Band 25	20M	QPSK	1	0	Bottom Face	0mm	SKU A	ON	26140	1860	21.21	21.50	0.02	0.941	1.006
	LTE Band 25	20M	QPSK	1	0	Bottom Face	0mm	SKU A	ON	26340	1880	21.17	21.50	0.05	0.953	1.028
	LTE Band 25	20M	QPSK	1	0	Bottom Face	0mm	SKU B	ON	26590	1905	21.29	21.50	0	0.837	0.878
	LTE Band 25	20M	QPSK	1	0	Bottom Face	0mm	SKU B	ON	26140	1860	21.21	21.50	-0.11	0.798	0.853
	LTE Band 25	20M	QPSK	1	0	Bottom Face	0mm	SKU B	ON	26340	1880	21.17	21.50	0.124	0.815	0.879
09	LTE Band 26	15M	QPSK	1	0	Bottom Face	0mm	SKU A	ON	26865	831.5	21.86	23.00	0.19	0.659	0.857
	LTE Band 26	15M	QPSK	1	0	Bottom Face	0mm	SKU B	ON	26865	831.5	21.86	23.00	-0.02	0.646	0.840
10	LTE Band 41	20M	QPSK	1	0	Edge 1	0mm	SKU A	OFF	40620	2593	21.65	23.00	0.06	0.274	0.376
	LTE Band 41	20M	QPSK	1	0	Edge 1	0mm	SKU B	OFF	40620	2593	21.65	23.00	0.02	0.258	0.354

Test Engineer : Bevis Chang and Mood Huang



16. Uncertainty Assessment

Per KDB 865664 D01 SAR measurement 100MHz to 6GHz, when the highest measured 1-g SAR within a frequency band is < 1.5 W/kg and the measured 10-g SAR within a frequency band is < 3.75 W/kg. The expanded SAR measurement uncertainty must be $\leq 30\%$, for a confidence interval of $k = 2$. If these conditions are met, extensive SAR measurement uncertainty analysis described in IEEE Std 1528-2013 is not required in SAR reports submitted for equipment approval. For this device, the highest measured 1-g SAR is less 1.5W/kg. Therefore, the measurement uncertainty table is not required in this report.

17. References

- [1] FCC 47 CFR Part 2 "Frequency Allocations and Radio Treaty Matters; General Rules and Regulations"
- [2] ANSI/IEEE Std. C95.1-1992, "IEEE Standard for Safety Levels with Respect to Human Exposure to Radio Frequency Electromagnetic Fields, 3 kHz to 300 GHz", September 1992
- [3] IEEE Std. 1528-2013, "IEEE Recommended Practice for Determining the Peak Spatial-Average Specific Absorption Rate (SAR) in the Human Head from Wireless Communications Devices: Measurement Techniques", Sep 2013
- [4] SPEAG DASY System Handbook
- [5] FCC KDB 447498 D01 v06, "Mobile and Portable Device RF Exposure Procedures and Equipment Authorization Policies", Oct 2015
- [6] FCC KDB 941225 D01 v03r01, "3G SAR MEAUREMENT PROCEDURES", Oct 2015
- [7] FCC KDB 941225 D05 v02r05, "SAR Evaluation Considerations for LTE Devices", Dec 2015
- [8] FCC KDB 941225 D05A v01r02, "Rel. 10 LTE SAR Test Guidance and KDB Inquiries", Oct 2015
- [9] FCC KDB 616217 D04 v01r02, "SAR Evaluation Considerations for Laptop, Notebook, Netbook and Tablet Computers", Oct 2015
- [10] FCC KDB 865664 D01 v01r04, "SAR Measurement Requirements for 100 MHz to 6 GHz", Aug 2015.
- [11] FCC KDB 865664 D02 v01r02, "RF Exposure Compliance Reporting and Documentation Considerations" Oct 2015.