

#01_WLAN2.4GHz_802.11b 1Mbps_Front_0mm_Ch11

Communication System: 802.11b ; Frequency: 2462 MHz; Duty Cycle: 1:1.014

Medium: MSL_2450_160619 Medium parameters used: $f = 2462$ MHz; $\sigma = 2.016$ S/m; $\epsilon_r = 52.538$; $\rho = 1000$ kg/m³

Ambient Temperature : 23.2 °C ; Liquid Temperature : 22.2 °C

DASY5 Configuration:

- Probe: ES3DV3 - SN3270; ConvF(4.37, 4.37, 4.37); Calibrated: 2015/9/28;
- Sensor-Surface: 3mm (Mechanical Surface Detection)
- Electronics: DAE4 Sn1399; Calibrated: 2015/11/23
- Phantom: SAM-Right; Type: SAM; Serial: 1795
- Measurement SW: DASY52, Version 52.8 (8); SEMCAD X Version 14.6.10 (7331)

Area Scan (61x81x1): Interpolated grid: dx=1.200 mm, dy=1.200 mm

Maximum value of SAR (interpolated) = 0.116 W/kg

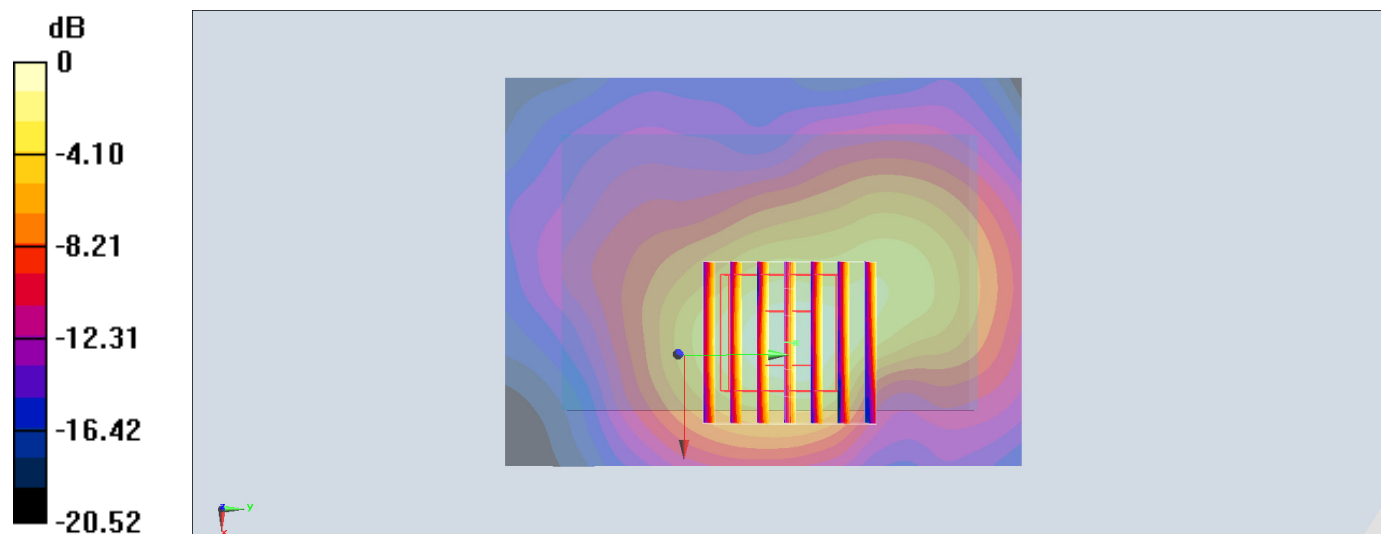
Zoom Scan (7x7x7)/Cube 0: Measurement grid: dx=5mm, dy=5mm, dz=5mm

Reference Value = 5.375 V/m; Power Drift = -0.02 dB

Peak SAR (extrapolated) = 0.171 W/kg

SAR(1 g) = 0.087 W/kg; SAR(10 g) = 0.043 W/kg

Maximum value of SAR (measured) = 0.112 W/kg



0 dB = 0.116 W/kg = -9.36 dBW/kg