

**#01 802.11b\_Bottom\_0cm\_Ch6\_ANT B**

**DUT: 052506-01**

Communication System: 802.11b ; Frequency: 2437 MHz;Duty Cycle: 1:1

Medium: MSL\_2450\_100625 Medium parameters used:  $f = 2437$  MHz;  $\sigma = 1.91$  mho/m;  $\epsilon_r = 53.6$ ;  $\rho = 1000$

kg/m<sup>3</sup>

Ambient Temperature : 22.5 ; Liquid Temperature : 21.4

**DASY5 Configuration:**

- Probe: ET3DV6 - SN1788; ConvF(4.19, 4.19, 4.19); Calibrated: 2009/9/23
- Sensor-Surface: 4mm (Mechanical Surface Detection)
- Electronics: DAE4 Sn778; Calibrated: 2009/9/18
- Phantom: ELI 4.0; Type: QDOVA001BA; Serial: 1029
- Measurement SW: DASY5, V5.0 Build 125; SEMCAD X Version 13.4 Build 125

**Ch6/Area Scan (181x191x1):** Measurement grid: dx=20mm, dy=20mm

Maximum value of SAR (interpolated) = 0.032 mW/g

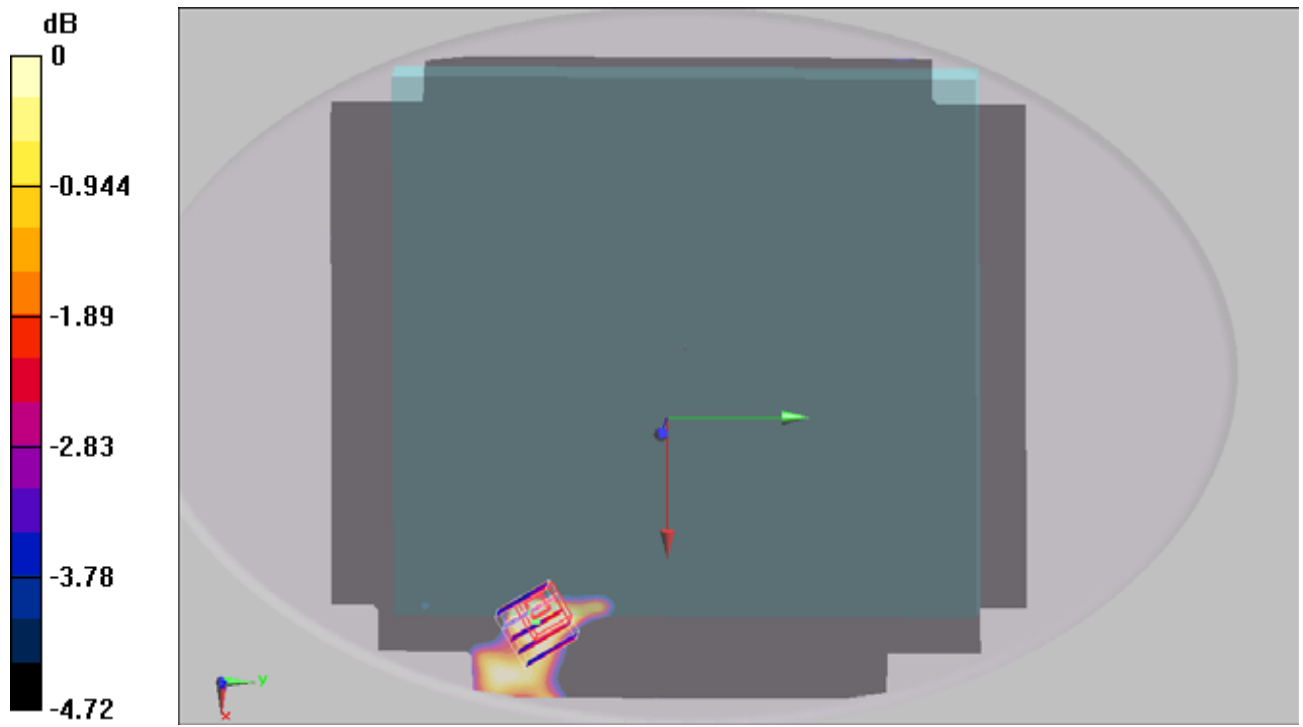
**Ch6/Zoom Scan (5x5x7)/Cube 0:** Measurement grid: dx=8mm, dy=8mm, dz=5mm

Reference Value = 1.08 V/m; Power Drift = 0.195 dB

Peak SAR (extrapolated) = 0.054 W/kg

**SAR(1 g) = 0.014 mW/g; SAR(10 g) = 0.00939 mW/g**

Maximum value of SAR (measured) = 0.013 mW/g



0 dB = 0.013mW/g

#01 802.11b\_Bottom\_0cm\_Ch6\_ANT B\_2D

DUT: 052506-01

Communication System: 802.11b ; Frequency: 2437 MHz;Duty Cycle: 1:1

Medium: MSL\_2450\_100625 Medium parameters used:  $f = 2437$  MHz;  $\sigma = 1.91$  mho/m;  $\epsilon_r = 53.6$ ;  $\rho = 1000$  kg/m<sup>3</sup>

Ambient Temperature : 22.5 ; Liquid Temperature : 21.4

DASY5 Configuration:

- Probe: ET3DV6 - SN1788; ConvF(4.19, 4.19, 4.19); Calibrated: 2009/9/23
- Sensor-Surface: 4mm (Mechanical Surface Detection)
- Electronics: DAE4 Sn778; Calibrated: 2009/9/18
- Phantom: ELI 4.0; Type: QDOVA001BA; Serial: 1029
- Measurement SW: DASY5, V5.0 Build 125; SEMCAD X Version 13.4 Build 125

**Ch6/Area Scan (141x151x1):** Measurement grid: dx=25mm, dy=25mm

Maximum value of SAR (interpolated) = 0.032 mW/g

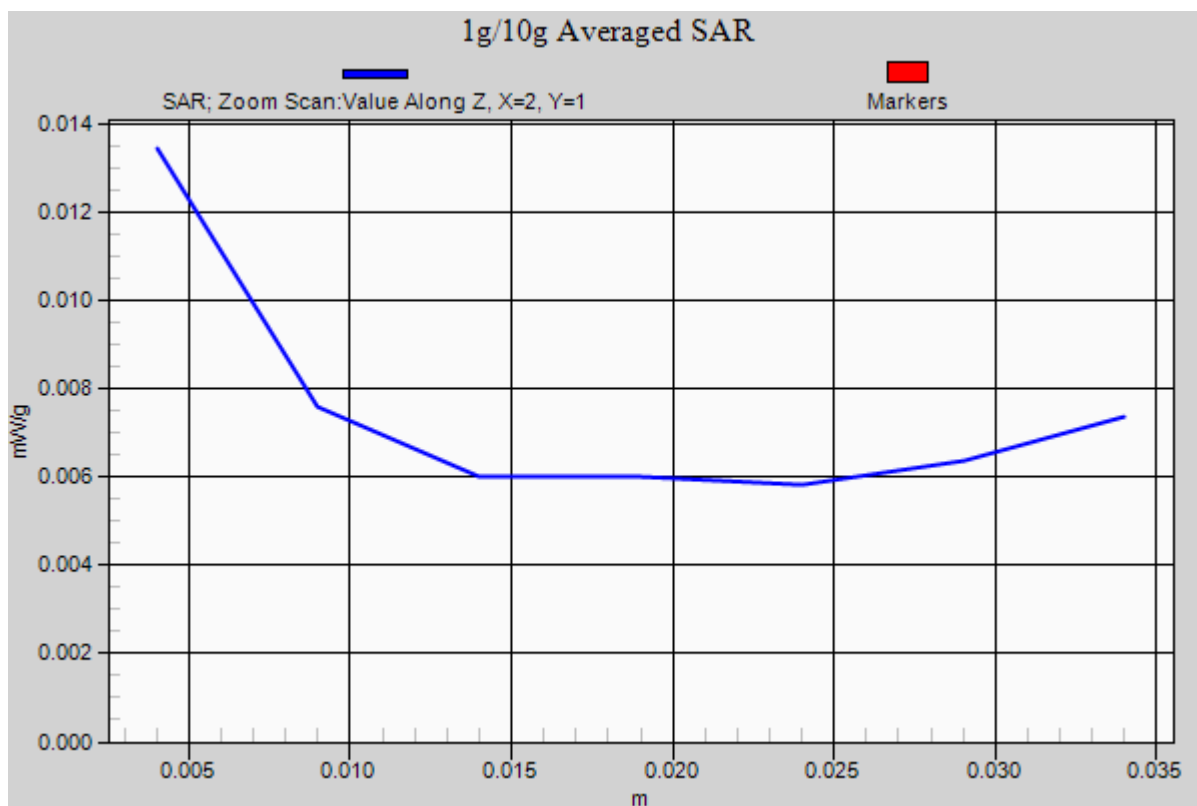
**Ch6/Zoom Scan (5x5x7)/Cube 0:** Measurement grid: dx=8mm, dy=8mm, dz=5mm

Reference Value = 1.08 V/m; Power Drift = 0.195 dB

Peak SAR (extrapolated) = 0.054 W/kg

**SAR(1 g) = 0.014 mW/g; SAR(10 g) = 0.00939 mW/g**

Maximum value of SAR (measured) = 0.013 mW/g



**#25 802.11a\_Bottom\_0cm\_Ch165\_ANT B**

**DUT: 052506-01**

Communication System: 802.11a; Frequency: 5825 MHz; Duty Cycle: 1:1

Medium: MSL\_5G\_100527 Medium parameters used:  $f = 5825$  MHz;  $\sigma = 6.21$  mho/m;  $\epsilon_r = 46.4$ ;  $\rho = 1000$

kg/m<sup>3</sup>

Ambient Temperature : 22.4 ; Liquid Temperature : 21.2

**DASY5 Configuration:**

- Probe: EX3DV3 - SN3514; ConvF(3.9, 3.9, 3.9); Calibrated: 2010/1/26
- Sensor-Surface: 2mm (Mechanical Surface Detection)
- Electronics: DAE4 Sn778; Calibrated: 2009/9/18
- Phantom: ELI 4.0; Type: QDOVA001BA; Serial: 1029
- Measurement SW: DASY5, V5.0 Build 125; SEMCAD X Version 13.4 Build 125

**Ch165/Area Scan (151x201x1):** Measurement grid: dx=10mm, dy=10mm

Maximum value of SAR (interpolated) = 0.117 mW/g

**Ch165/Zoom Scan (8x8x10)/Cube 0:** Measurement grid: dx=4mm, dy=4mm, dz=2.5mm

Reference Value = 0.409 V/m; Power Drift = 0.141 dB

Peak SAR (extrapolated) = 0.257 W/kg

**SAR(1 g) = 0.079 mW/g; SAR(10 g) = 0.041 mW/g**

Maximum value of SAR (measured) = 0.140 mW/g

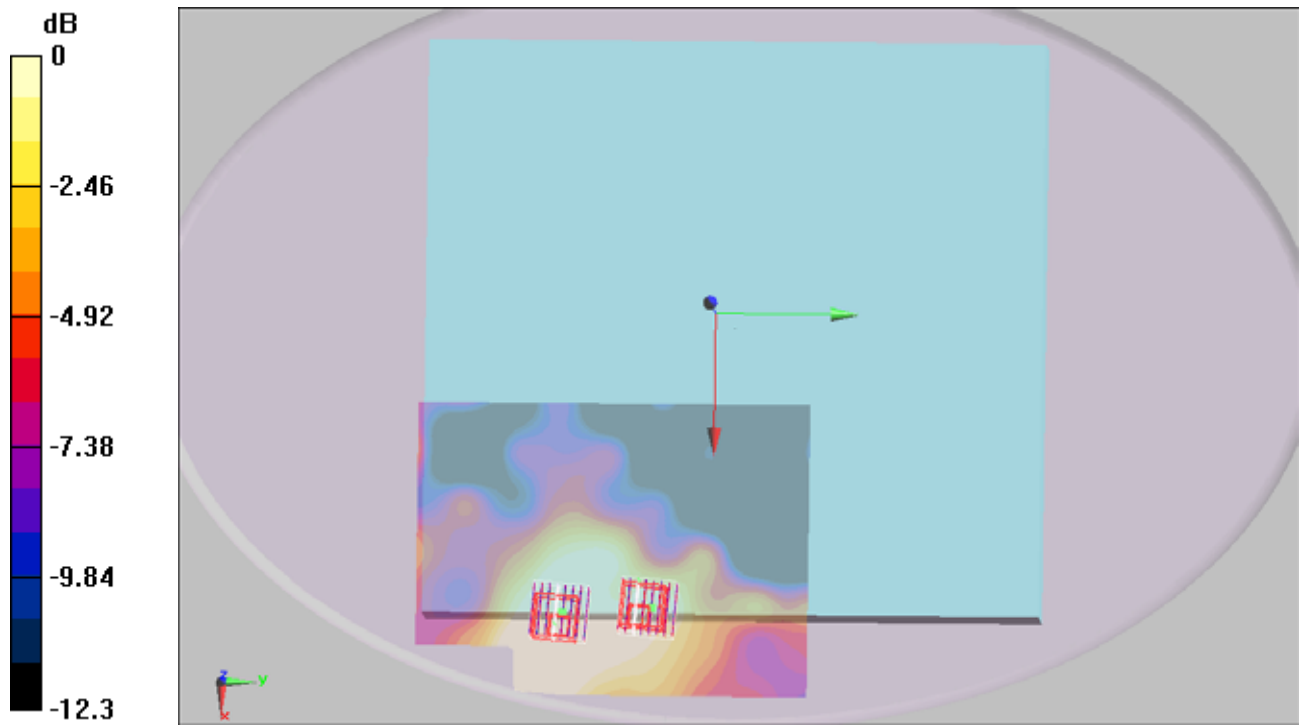
**Ch165/Zoom Scan (8x8x10)/Cube 1:** Measurement grid: dx=4mm, dy=4mm, dz=2.5mm

Reference Value = 0.409 V/m; Power Drift = 0.141 dB

Peak SAR (extrapolated) = 0.202 W/kg

**SAR(1 g) = 0.047 mW/g; SAR(10 g) = 0.029 mW/g**

Maximum value of SAR (measured) = 0.078 mW/g



0 dB = 0.078mW/g

#25 802.11a\_Bottom\_0cm\_Ch165\_ANT B\_2D

DUT: 052506-01

Communication System: 802.11a; Frequency: 5825 MHz; Duty Cycle: 1:1

Medium: MSL\_5G\_100527 Medium parameters used:  $f = 5825$  MHz;  $\sigma = 6.21$  mho/m;  $\epsilon_r = 46.4$ ;  $\rho = 1000$

kg/m<sup>3</sup>

Ambient Temperature : 22.4 ; Liquid Temperature : 21.2

DASY5 Configuration:

- Probe: EX3DV3 - SN3514; ConvF(3.9, 3.9, 3.9); Calibrated: 2010/1/26
- Sensor-Surface: 2mm (Mechanical Surface Detection)
- Electronics: DAE4 Sn778; Calibrated: 2009/9/18
- Phantom: ELI 4.0; Type: QDOVA001BA; Serial: 1029
- Measurement SW: DASY5, V5.0 Build 125; SEMCAD X Version 13.4 Build 125

**Ch165/Area Scan (151x201x1):** Measurement grid: dx=10mm, dy=10mm

Maximum value of SAR (interpolated) = 0.117 mW/g

**Ch165/Zoom Scan (8x8x10)/Cube 0:** Measurement grid: dx=4mm, dy=4mm, dz=2.5mm

Reference Value = 0.409 V/m; Power Drift = 0.141 dB

Peak SAR (extrapolated) = 0.257 W/kg

**SAR(1 g) = 0.079 mW/g; SAR(10 g) = 0.041 mW/g**

Maximum value of SAR (measured) = 0.140 mW/g

**Ch165/Zoom Scan (8x8x10)/Cube 1:** Measurement grid: dx=4mm, dy=4mm, dz=2.5mm

Reference Value = 0.409 V/m; Power Drift = 0.141 dB

Peak SAR (extrapolated) = 0.202 W/kg

**SAR(1 g) = 0.047 mW/g; SAR(10 g) = 0.029 mW/g**

Maximum value of SAR (measured) = 0.078 mW/g

