







A D T



MANUFACTURED : OCTOBER 2012
 SERIAL NO. 1243SP561897ES65H Model:UJ8E1ADAA1-B
 F/W : 1.00 H/W : 1.00
 KO008070062430002FE401

MODEL UJ8E1
 +5V=1.5A
 COMPLIES WITH FDA RADIATION PERFORMANCE STANDARDS, 21 CFR SUBCHAPTER J. 130PSQ
 Panasonic Precision Devices Co., Ltd.
 1080 Takano Nagomi-Machi Tamana-Gun Kumamoto, Japan Made in China
 D33083 E204940 N1246 BSH 609500223BH
 Factory: C2

DO NOT OPEN THE DRIVE.
 NO USER ADJUSTMENT OR
 SERVICEABLE PARTS INSIDE.
 DO NOT PUSH COVER.

CLASS 1 LASER PRODUCT
 LASER KLASSE 1 类激光产品

1. 기기명(모델명) : UJ8E1
 2. 등록번호 : KCC-REM-PPD-UJ8E1
 3. 인증 받은 자의 상호 : Panasonic Precision Devices Co., Ltd.
 4. 제조년월일 : NAME PLATE
 5. 제조지/제조국가 : PPRD/CHINA

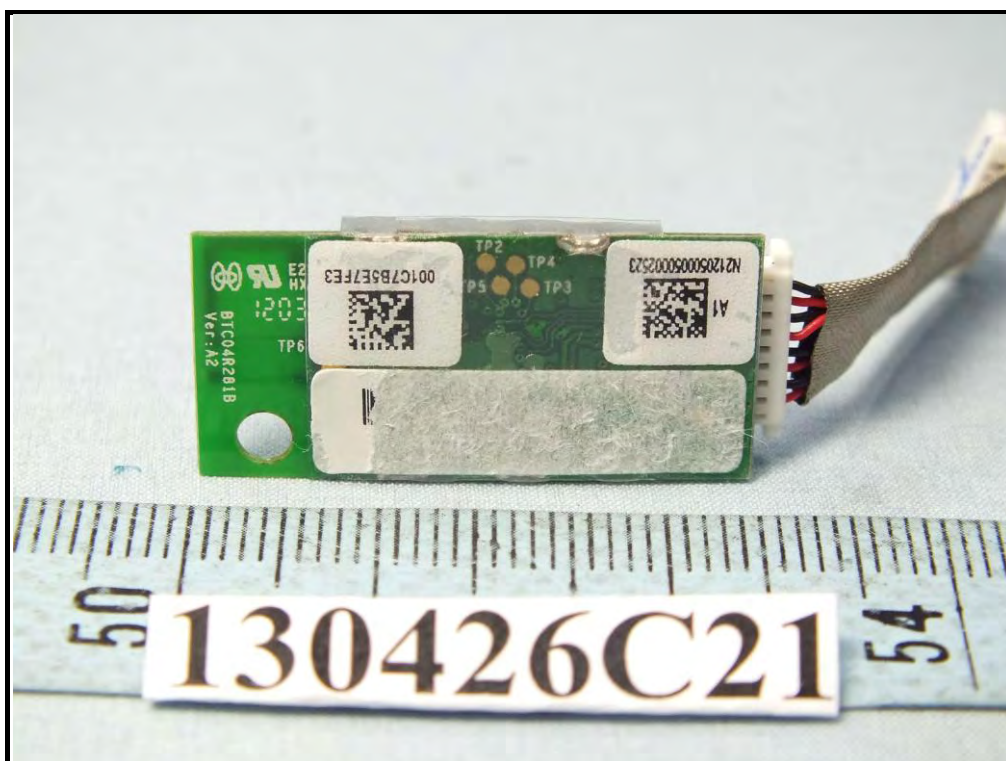
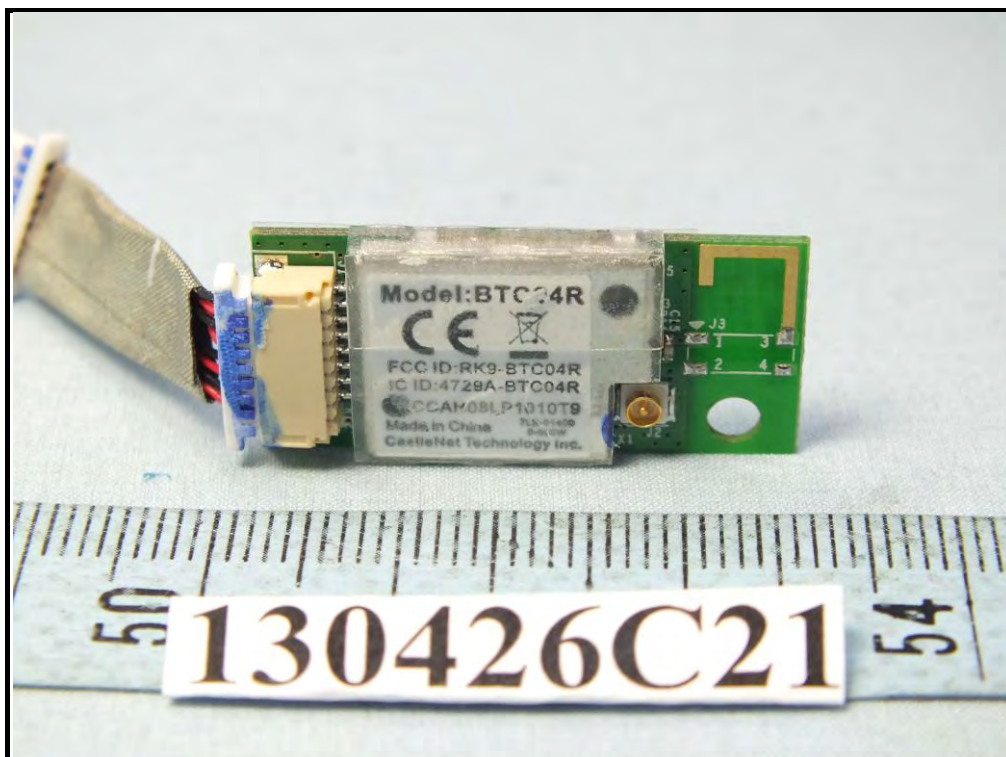
CAUTION CLASS 3B VISIBLE AND INVISIBLE LASER RADIATION WHEN OPEN. AVOID EXPOSURE TO THE BEAM.
ATTENTION CLASSE 3B RAYONNEMENT LASER VISIBLE ET INVISIBLE CAS D'OUVERTURE.
VORSICHT KLASSE 3B SICHTBARE UND UNSICHTBARE LASERSTRAHLUNG, WENN ABDECKUNG GEÖFFNET.
ADVARSEL KLASSE 3B SYNLIG OG USYNLIG LASERSTRÅLING VED ÅBNING. UNNGÅ UDSÆTTELSE FOR STRÅLING.
VARNING KLASSE 3B SYNLIG OCH OSYNLIG LASERSTRÅLNING NÄR DEKSEL ÅPNES. UNNGÅ EXPOSITION FÖR STRÅLNING.
VARO! KLASSE 3B SYNLIG OCH OSYNLIG LASERSTRÅLNING NÄR DENNA DEL ÄR ÖPPNAD. STRÅLEN ÄR FARLIG.
 ALA KATSO SIITTEEN.
注意 通电状态下存在3B类可见以及不可见激光辐射免曝露在发射激光束下

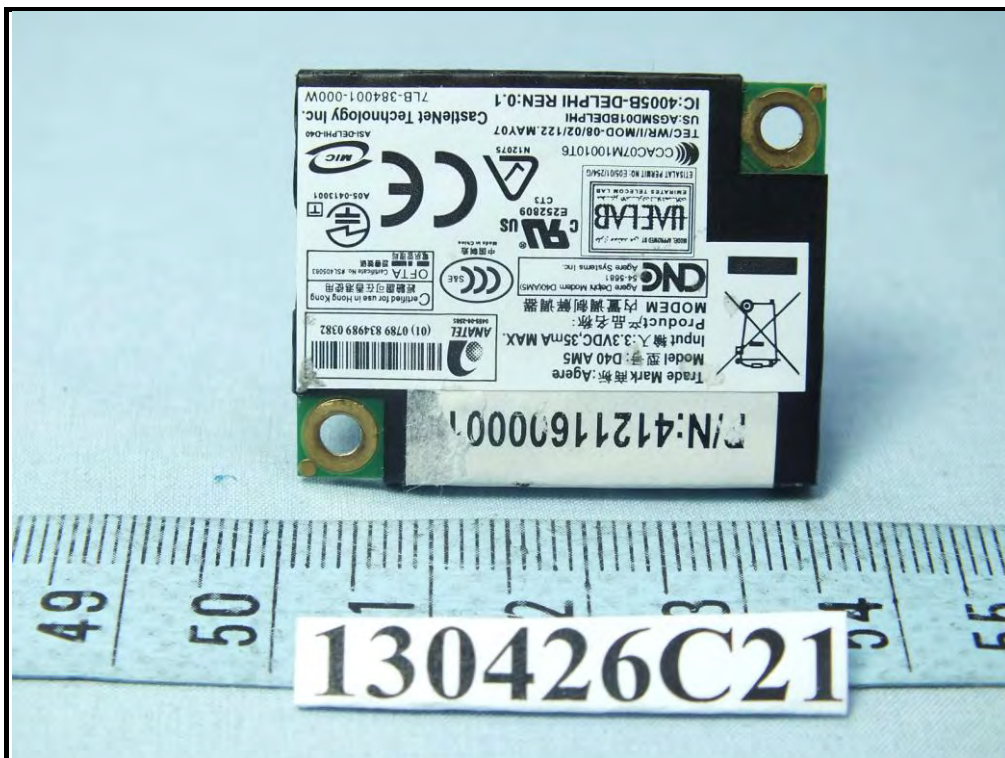
Free Sample

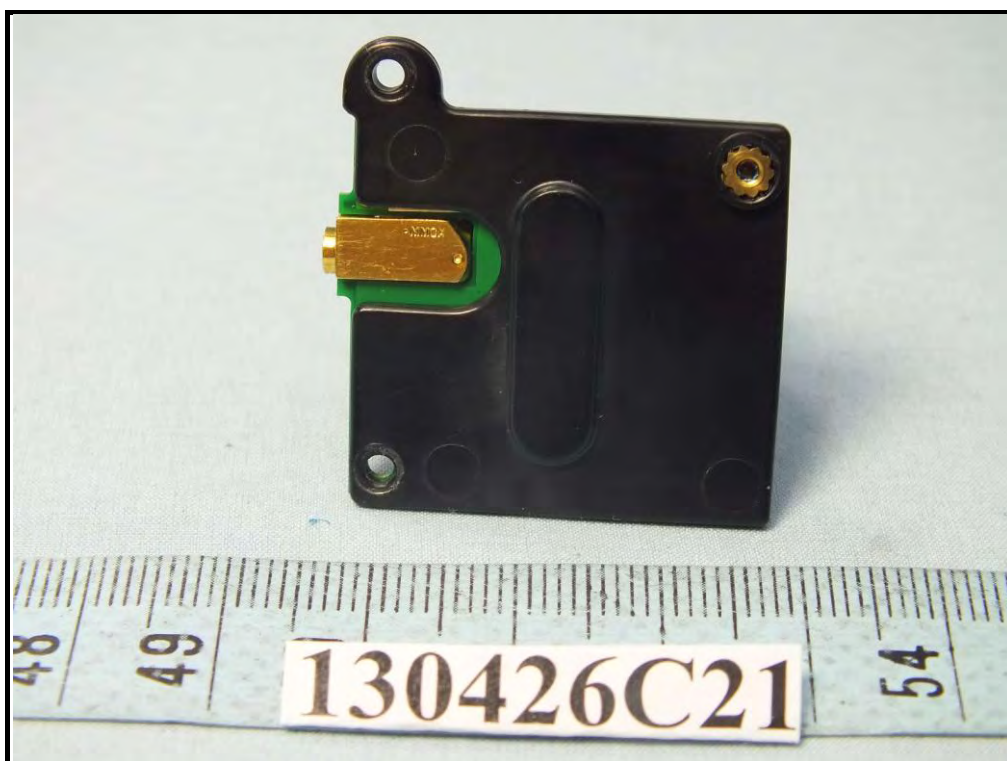
B20614 Super Multi GTC物料 M101038

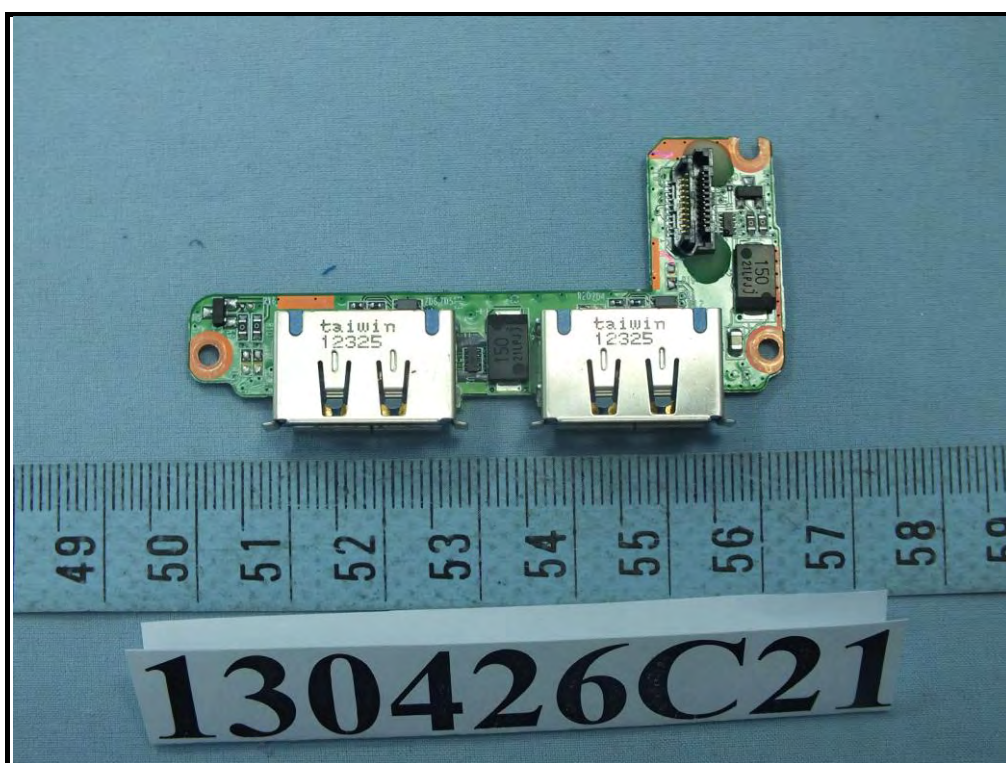
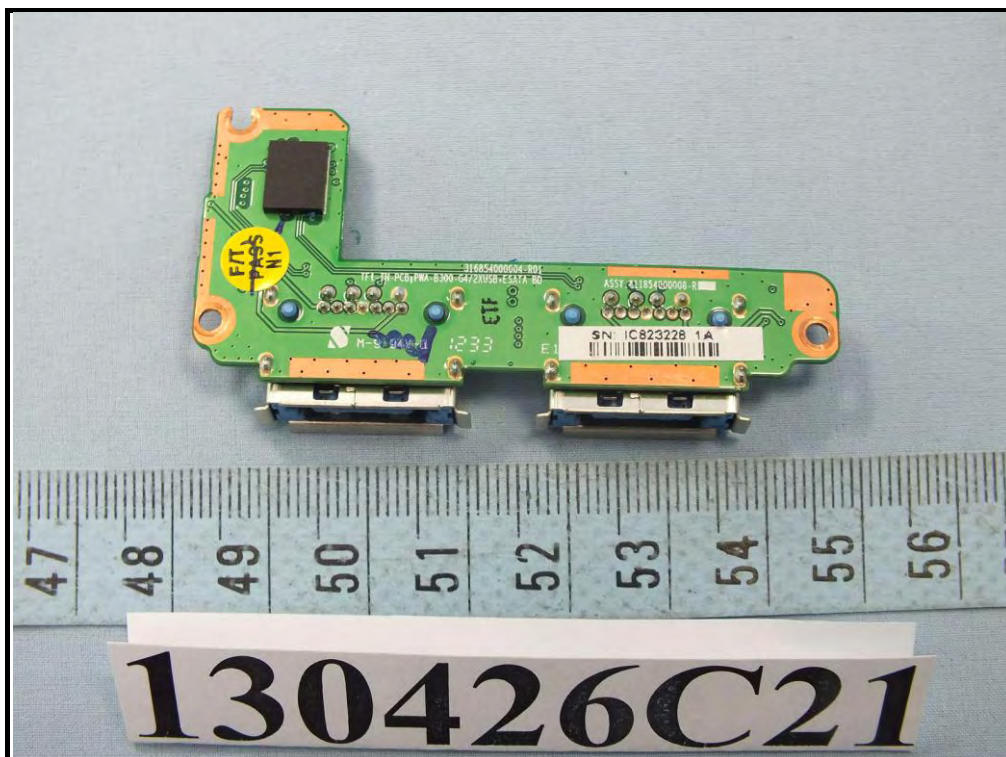


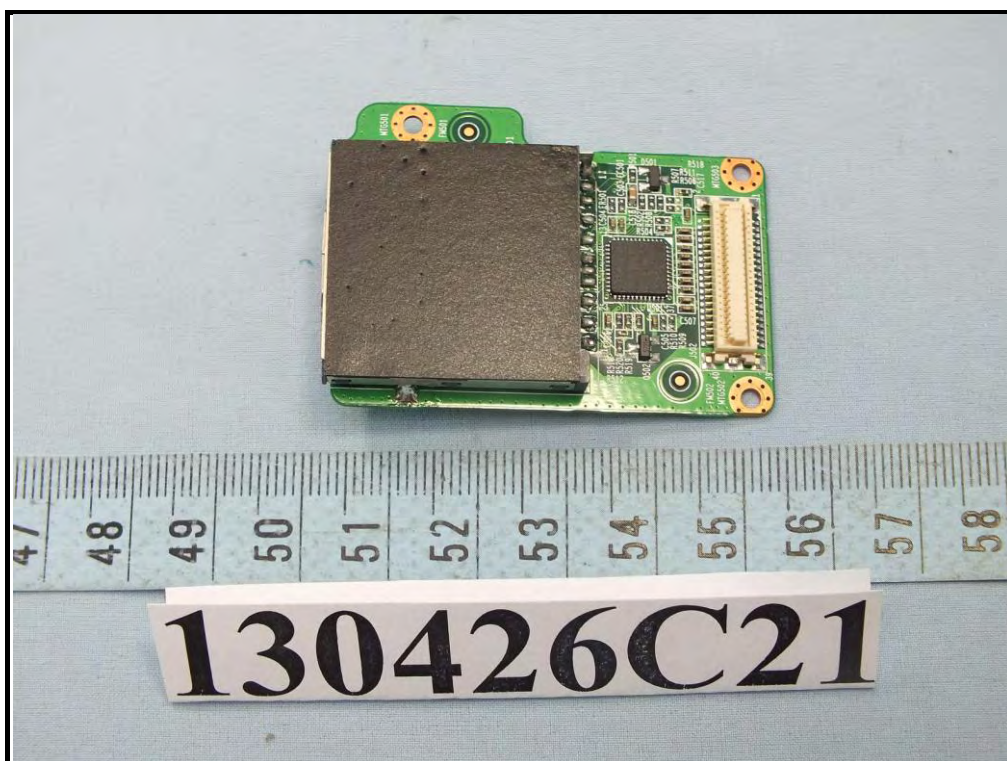
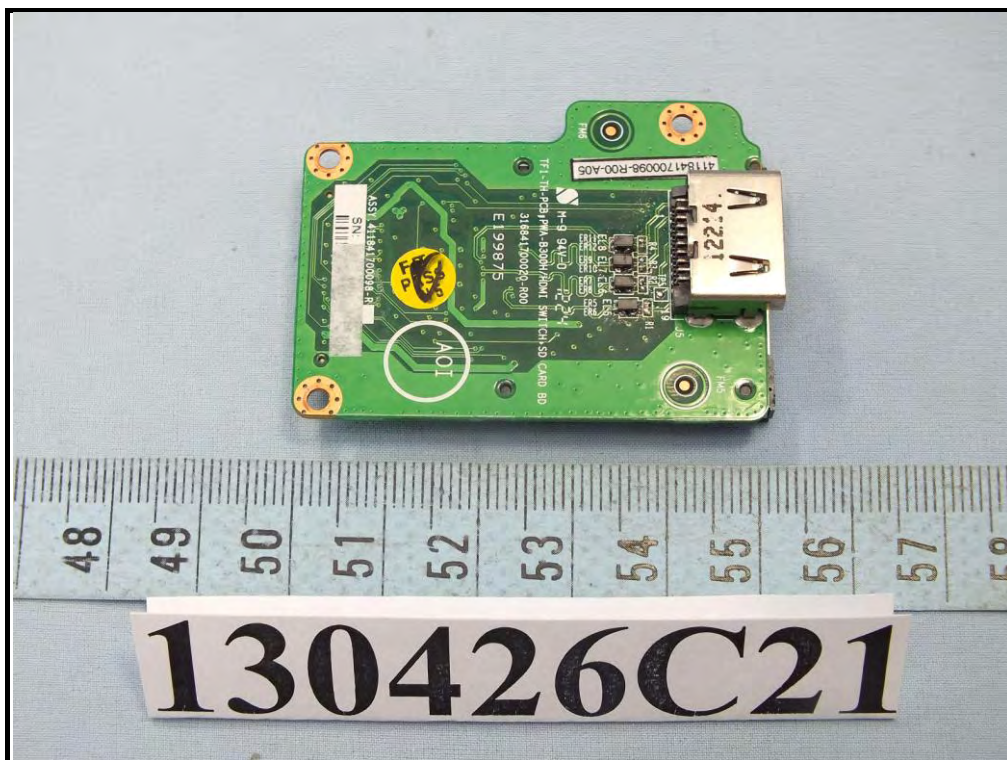


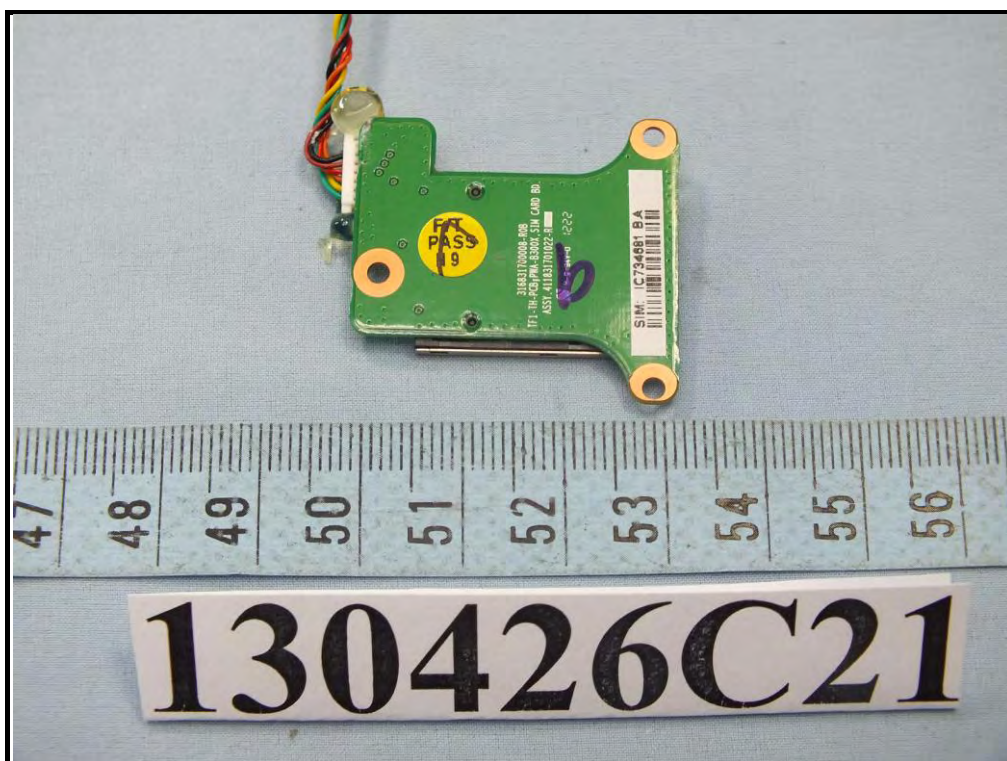
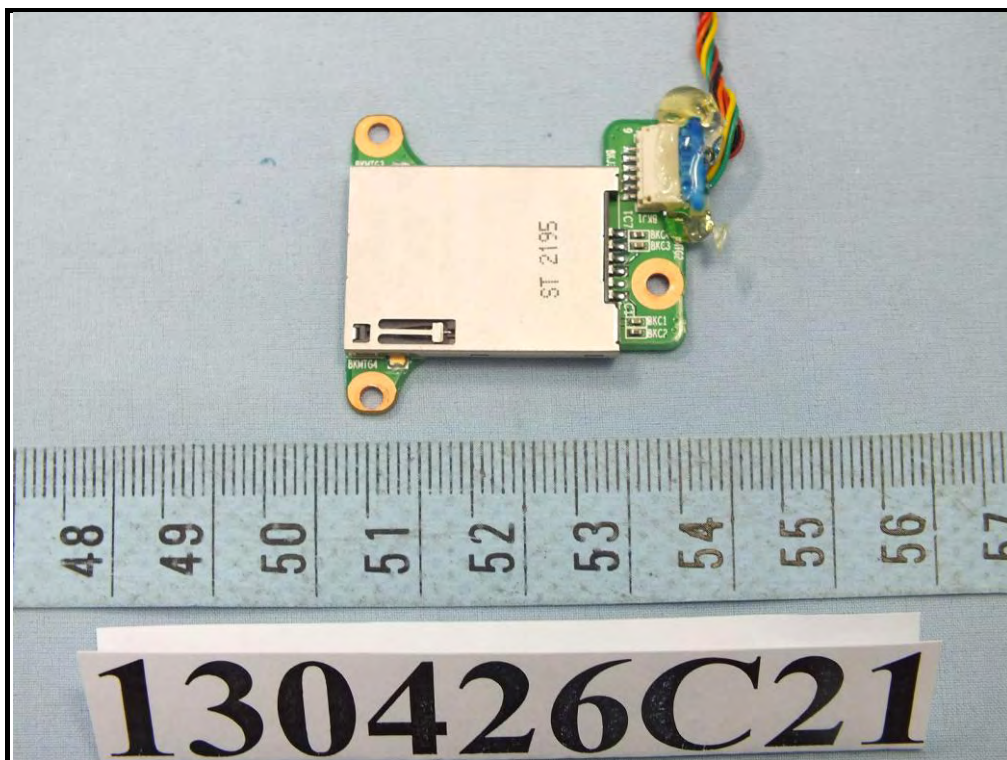


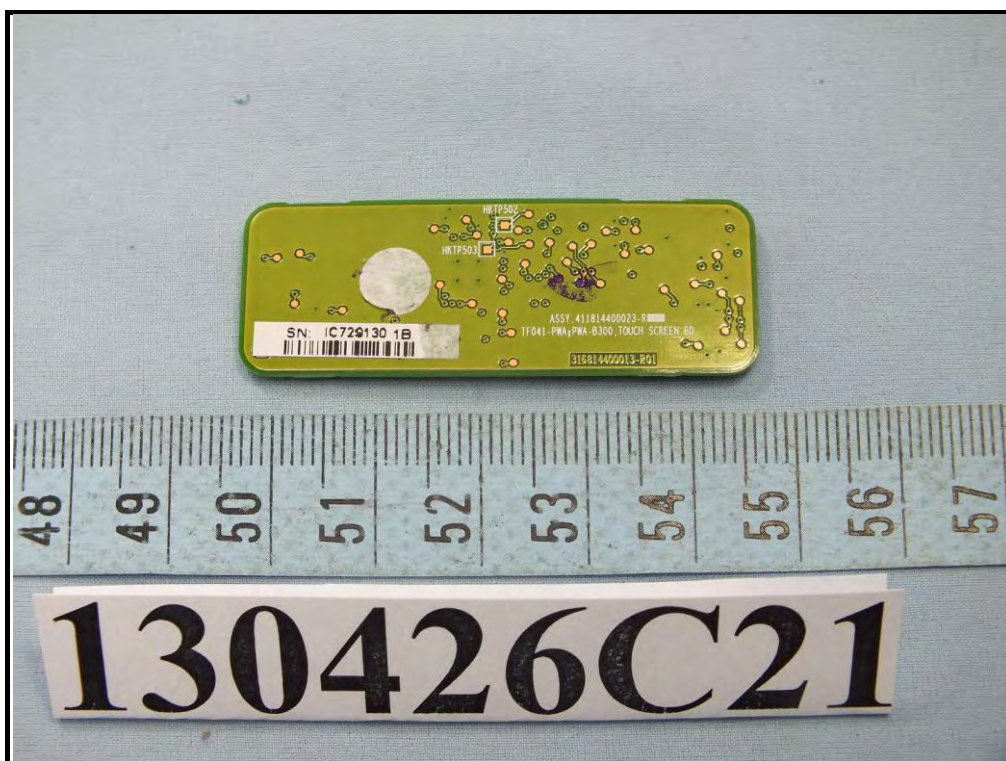
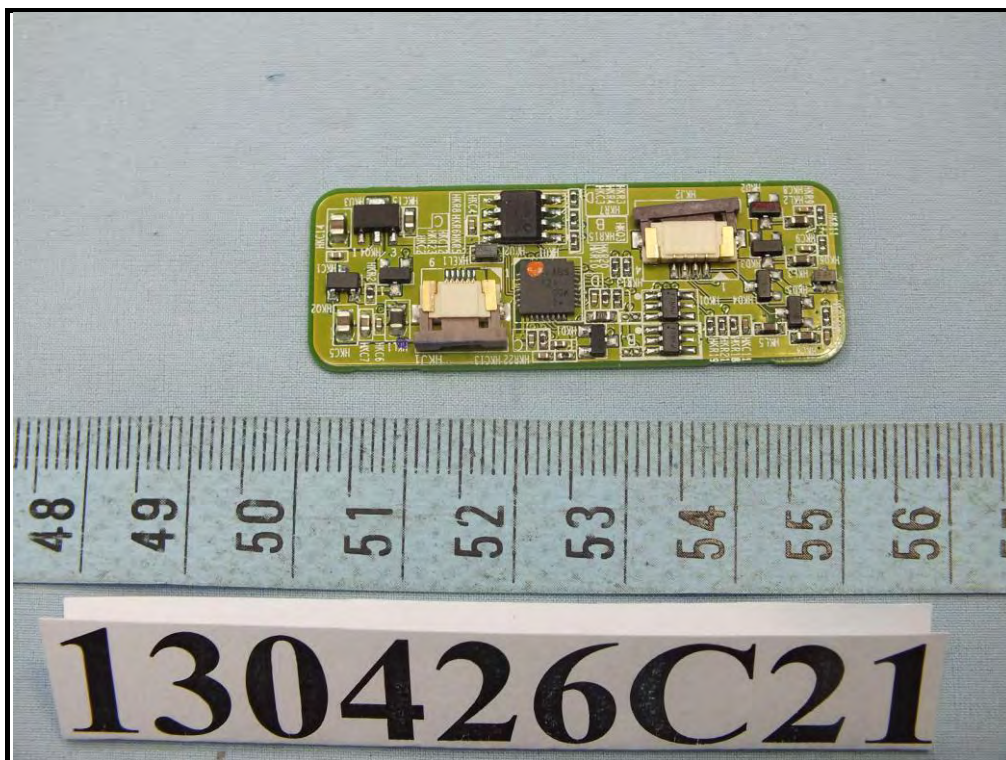


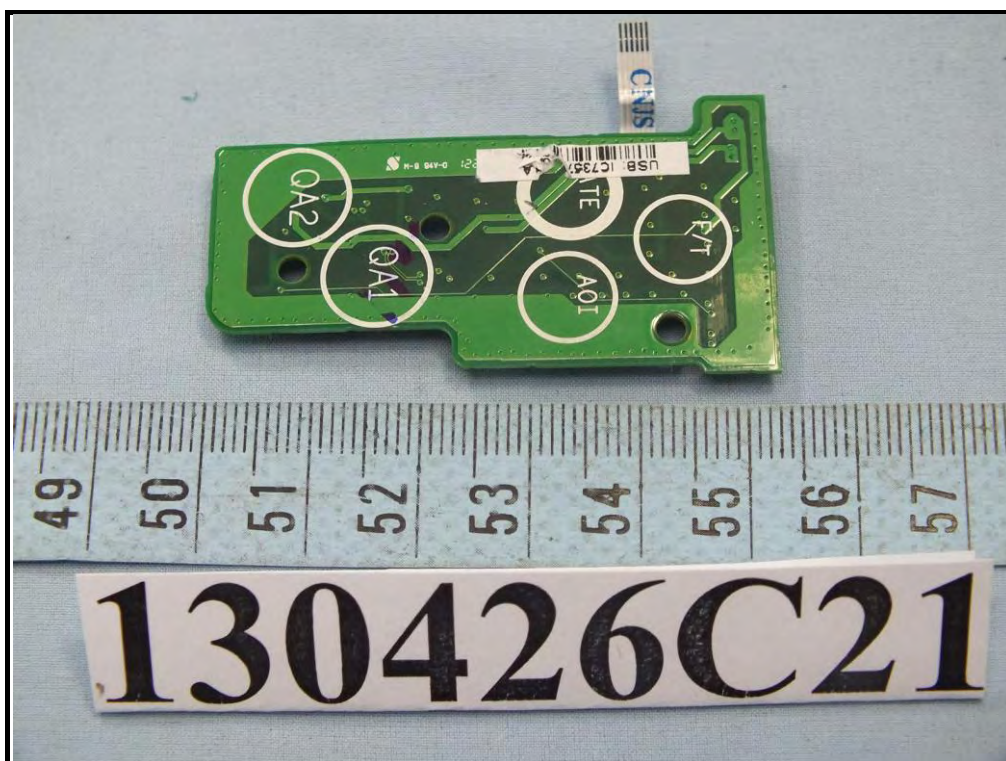
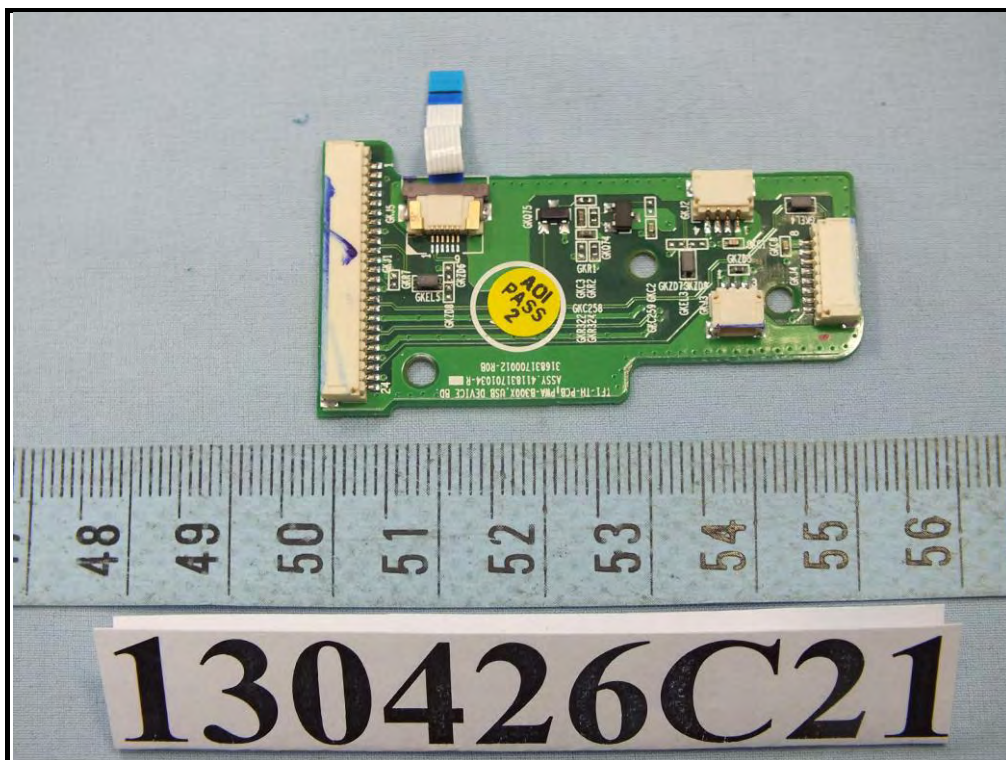


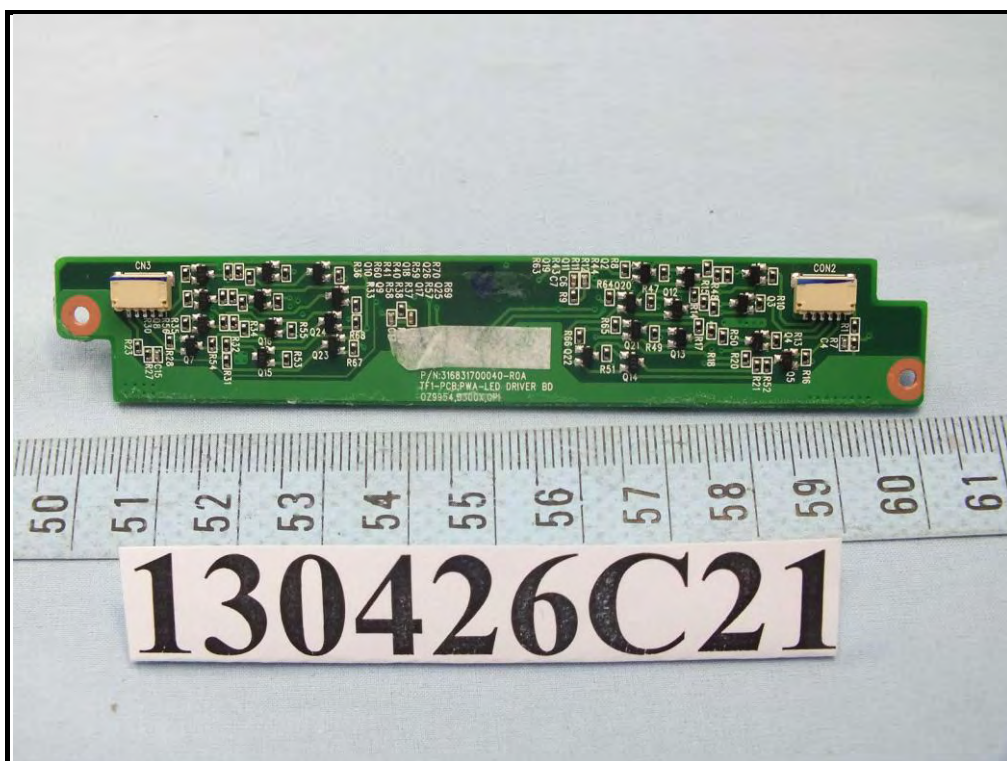
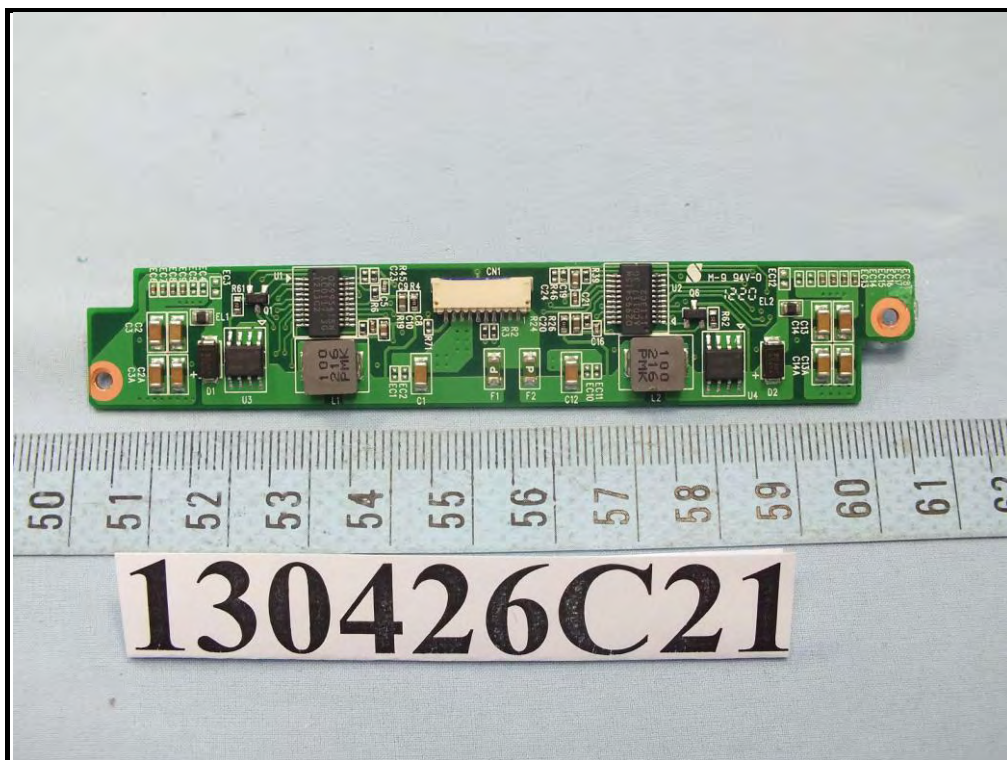






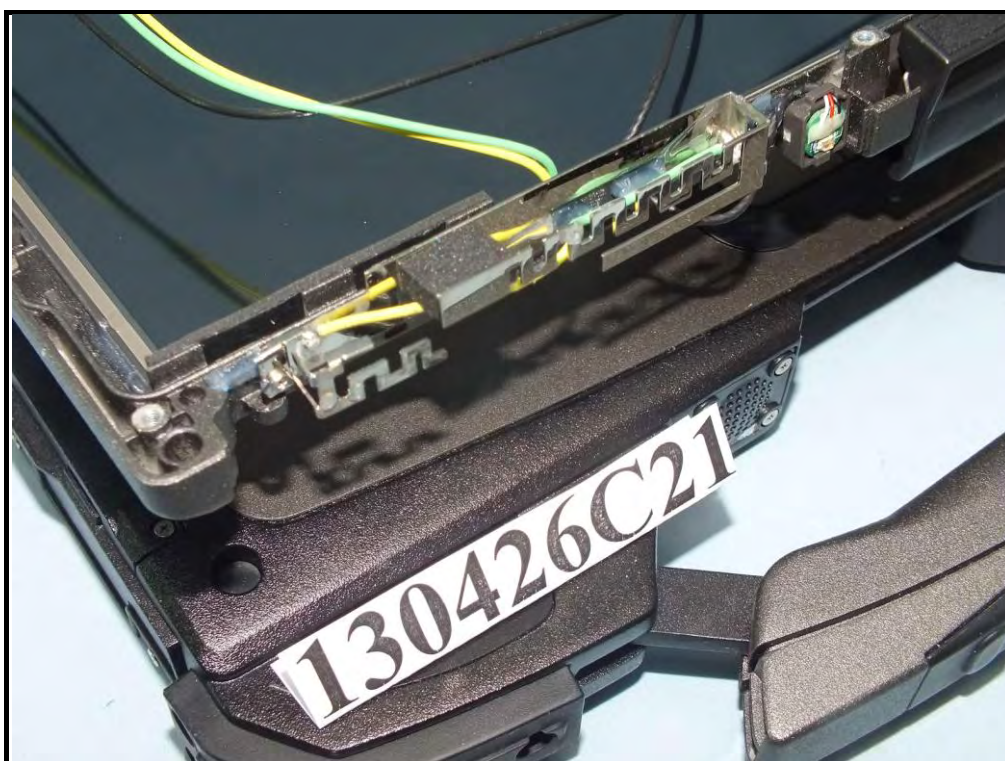


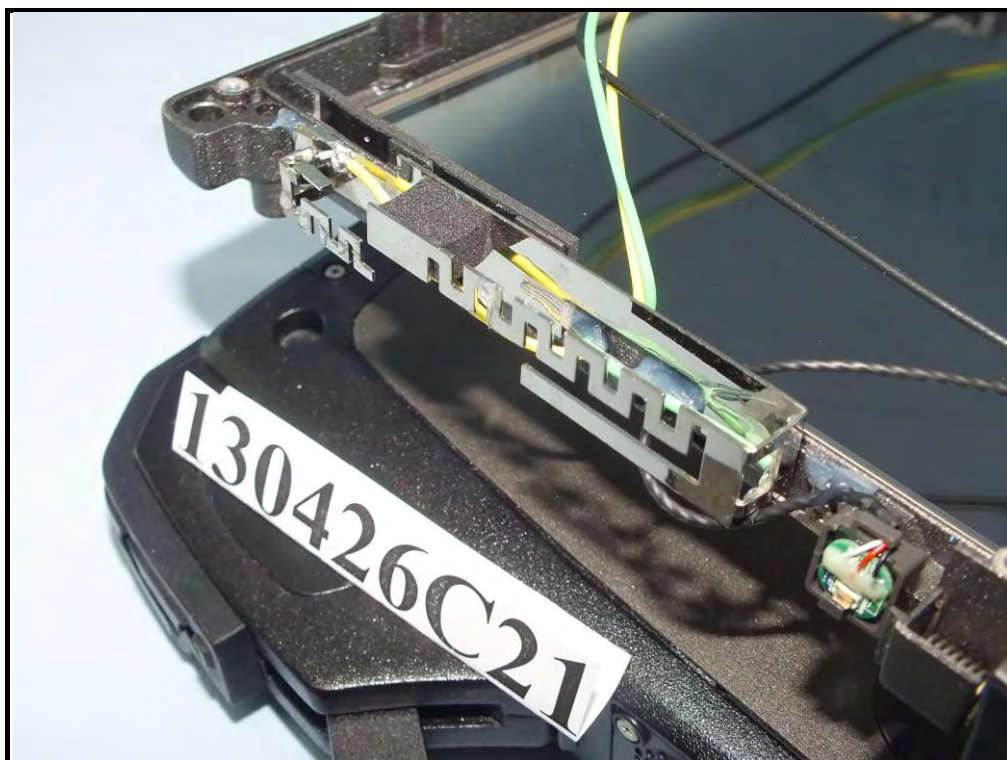




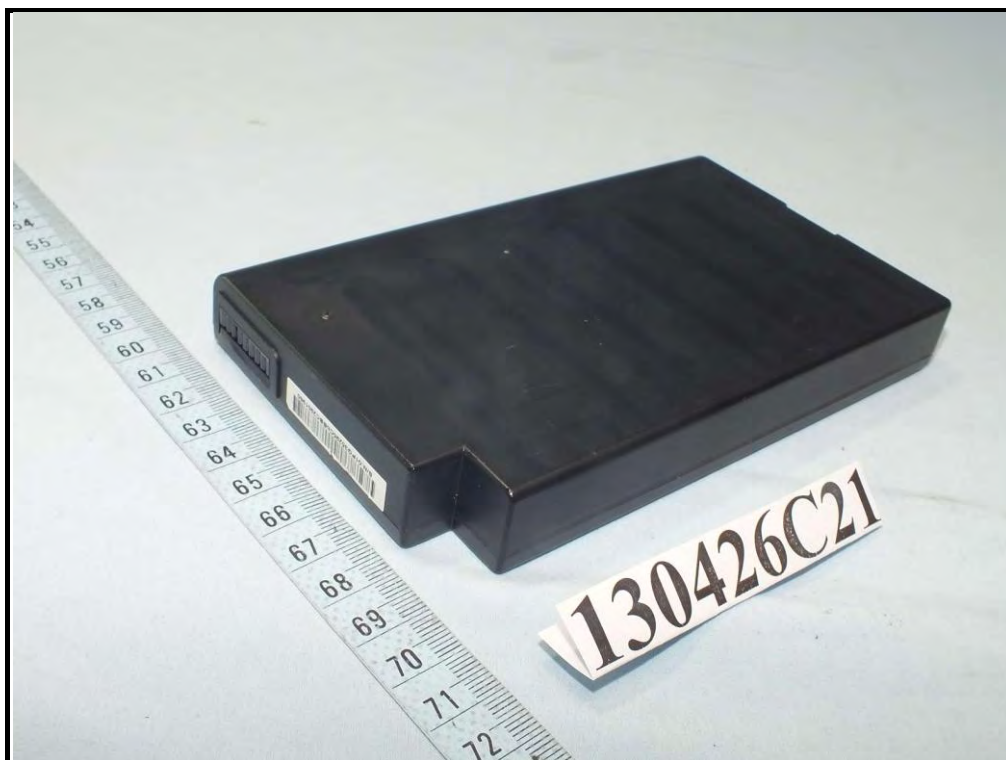
















A D T

