



Applied Wireless products are designed and manufactured with pride in the United States of America

© Copyright 2007 by Applied Wireless, Inc. All rights reserved.  
Specifications subject to change without notice.

**APPLIED WIRELESS, INC.**  
1250 Avenida Acaso, Camarillo, CA 93012  
Phone: 805-383-9600 Fax: 805-383-9001  
Email: [info@appliedwireless.com](mailto:info@appliedwireless.com)  
[www.appliedwireless.com](http://www.appliedwireless.com)

# User's Guide

Instructions for Installation and Operation

**900 MHz Stereo Audio Transmitter**  
Model AT900-32



**900 MHz Stereo Audio Receiver**  
Model AR900-32



*Long Range Wireless Applications*

(This page intentionally left blank)

#### ONE YEAR LIMITED WARRANTY (USA), cont.

● **HOW TO OBTAIN WARRANTY SERVICE:**

If a product covered by this warranty and sold in the USA by AW proves to be defective during the warranty period AW will, at its sole option, repair it or replace it with a comparable new or reconditioned product without charge for parts and labor, when said product is returned in compliance with the following requirements:

1. You must first contact AW at the following address/phone for assistance:

**APPLIED WIRELESS, INC.  
1250 Avenida Acaso, Suite F  
Camarillo, CA 93012  
Phone: (805) 383-9600**

If you are instructed to return your product directly to the factory, a Return Merchandise Authorization number (RMA) will be issued to you.

2. You must package the product carefully and ship it insured and prepaid. The RMA number must be clearly indicated on the outside of the shipping container. *Any product returned without an RMA number will be refused delivery.*
3. In order for AW to perform service under warranty, you must include the following:
  - (a) Your name, return shipping address (not a PO Box), and daytime telephone number.
  - (b) Proof of purchase showing the date of purchase.
  - (c) A detailed description of the defect or problem.

Upon completion of service, AW will ship the product to the specified return shipping address. The method of shipping shall be at AW's sole discretion. The cost of return shipping (within USA) shall be borne by AW.



## ONE YEAR LIMITED WARRANTY (USA)

Products manufactured by APPLIED WIRELESS, INC. (AW) and sold to purchasers in the USA are warranted by AW according to the following terms and conditions. You should read this Warranty thoroughly.

### • WHAT IS COVERED, AND DURATION OF COVERAGE:

AW warrants the product to be free from defects in materials and workmanship for one (1) year from the date of purchase by the original end user purchaser.

### • WHAT IS NOT COVERED:

This warranty does not apply to the following:

1. Damage caused by accident, physical or electrical misuse or abuse, improper installation, failure to follow instructions contained in the User's Guide, any use contrary to the product's intended function, unauthorized service or alteration (i.e. service or alteration by anyone other than AW).
2. Damage occurring during shipment.
3. Damage caused by acts of God, including without limitation: earthquake, fire, flood, storms, or other acts of nature.
4. Damage or malfunction caused by the intrusion of moisture or other contamination within the product.
5. Batteries supplied by AW in or for the product.
6. Cosmetic deterioration of chassis, cases, or pushbuttons resulting from wear and tear typical of normal use.
7. Any cost or expense related to troubleshooting to determine whether a malfunction is due to a defect in the product itself, in the installation, or any combination thereof.
8. Any cost or expense related to repairing or correcting the installation of an AW product.
9. Any cost or expense related to the removal or reinstallation of the product.
10. Any product whose serial number or date code is altered, defaced, obliterated, destroyed, or removed.

This warranty is extended to the original purchaser of the product(s) only, and is not transferable to any subsequent owner or owners of the product(s). AW reserves the right to make changes or improvements in its products without incurring any obligation to similarly alter products previously purchased.

### • EXCLUSION OF INCIDENTAL OR CONSEQUENTIAL DAMAGES:

AW expressly disclaims liability for incidental and consequential damages caused (or allegedly caused) by the product. The term "incidental or consequential damages" refers (but is not limited) to:

1. Expenses of transporting the product to AW to obtain service.
2. Loss of use of the product.
3. Loss of the original purchaser's time.

### • LIMITATION OF IMPLIED WARRANTIES:

This warranty limits AW's liability to the repair or replacement of the product. AW makes no express warranty of merchantability or fitness for use. Any implied warranties, including fitness for use and merchantability, are limited in duration to the period of the one (1) year express limited warranty set forth herein. The remedies provided under this warranty are exclusive and in lieu of all others. AW neither assumes nor authorizes any person or organization to make any warranties or assume any liability in connection with the sale, installation, or use of this product.

Some states do not allow limitations on how long an implied warranty lasts, and some states do not allow the exclusion or limitation of liability for incidental or consequential damages so the limitations or exclusions stated herein may not apply to you. This warranty gives you specific legal rights and you may have other rights which vary from state to state.

(continued on next page)

## 900 MHz Stereo Audio Transmitter Model AT900-32

## 900 MHz Stereo Audio Receiver Model AR900-32

## Introduction / Product Descriptions

Model AT900-32 from Applied Wireless, Inc. is a high quality transmitter designed to broadcast excellent quality low noise stereo audio from any line level source, to the Applied Wireless model AR900-32 receiver. The AT900-32 transmitter is compatible with line level audio sources such as CD and DVD players, commercial radio (AM or FM) receivers, satellite radio receivers, MP3 players, and PCs. Model AT900-32 conforms to FCC Part 15 requirements for unlicensed use, and will transmit over distances up to 750 feet.\* The range may be increased substantially through the use of a directional antenna (such as a flat panel or Yagi) at the receiver.

\* Unobstructed, straight line-of-sight range, when used with the standard antennas included with the transmitter and receiver.

The AT900-32 transmitter and the AR900-32 receiver provide thirty-two user-selectable channels of operation within the 902 – 928 MHz band to enable simultaneous operation of multiple transmitters in a common area. Excellent frequency stability is assured through the use of crystal references. The products incorporate precise FM modulation and sophisticated filters to provide stable, interference-free high fidelity audio reception.

The transmitter and receiver are housed in small yet rugged aluminum extrusion enclosures. AC power converters (9VDC) are supplied, along with RCA phono-type audio cables. By FCC regulation, the transmitter's quarter-wave antenna is permanently attached (substituting a different antenna, or mounting the antenna remotely are not permitted). The antenna supplied with the receiver is a removable quarter-wave ground plane (sometimes referred to as a half-wave) antenna. The receiver's antenna

attaches with a BNC connector, enabling the use of an alternative antenna, (such as a flat panel or Yagi) to increase operating range (please contact Applied Wireless for a selection of available antennas).

The AT900-32 transmitter and the AR900-32 receiver are well-suited for many diverse applications, including distribution of audio entertainment content throughout a building, commercial and industrial surveillance, monitoring, security, etc.

## Installation Instructions

---

### Before Beginning the Installation

Plan your installation carefully. The physical location and orientation of the transmitter and receiver antennas (relative to each other) will have a significant influence on reception quality at the receiver, particularly at longest ranges. For best results, **both the transmitter antenna and the receiver antenna should be positioned vertically (pointing either up or down)**. Also, keep in mind that the RF signal from the transmitter will travel through most non-metallic building materials (wood, stucco, brick, etc.), however *maximum stated reception range is based on unobstructed line of sight conditions*. While the transmitter's signal will easily pass through most non-metallic building structures, the transmitter and receiver are both rated for indoor use only. If either unit must be located outdoors, it must be protected from the elements (using, for example, a non-metallic NEMA4 enclosure).

### Connecting Audio to the AT900-32 Transmitter

Connect a line level stereo audio source (outputs from a CD player, for example) to the corresponding LEFT and RIGHT line-level input jacks on the transmitter's rear panel (refer to Figure 1). A shielded dual cable is supplied with the transmitter for making these connections. Some audio devices, such as MP3 players, portable CD players, and PC sound cards have a single miniature (3.5mm) stereo phone jack (as opposed to separate RCA phono-type jacks). To connect any of these to the transmitter, use the supplied adaptor in conjunction with the standard dual cable to make the connection.

### The following sections pertain exclusively to the Audio Transmitter, Model AT900-32:

This product incorporates transmitter module FCC ID: QY4265

This device complies with Part 15 of the FCC Rules. Operation is subject to the following two conditions:

- (1) This device may not cause harmful interference and
- (2) This device must accept any interference received, including interference that may cause undesired operation.

### INSTRUCTION TO THE USER (required by the FCC)

This equipment has been tested and found to comply with the limits for a class B digital device, pursuant to part 15 of the FCC Rules. These limits are designed to provide reasonable protection against harmful interference in a residential installation. This equipment generates, uses and can radiate radio frequency energy and if not installed and used in accordance with the instructions, may cause harmful interference to radio communications. However, there is no guarantee that interference will not occur in a particular installation. If this equipment does cause harmful interference to radio or television reception, which can be determined by turning the equipment off and on, the user is encouraged to try to correct the interference by one or more of the following measures:

- Reorient or relocate the receiving antenna.
- Increase the separation between the equipment and receiver.
- Connect the equipment into an outlet on a circuit different from that to which the receiver is connected.
- Consult the dealer or an experienced radio/TV technician for help.

This equipment has been certified to comply with the limits for a class B computing device, pursuant to FCC Rules. In order to maintain compliance with FCC regulations, shielded cables must be used with this equipment. Operation with non-approved equipment or unshielded cables is likely to result in interference to radio and TV reception. The user is cautioned that changes and modifications made to the equipment without the approval of manufacturer could void the user's authority to operate this equipment.

## Technical Specifications

### AT900-32 Transmitter

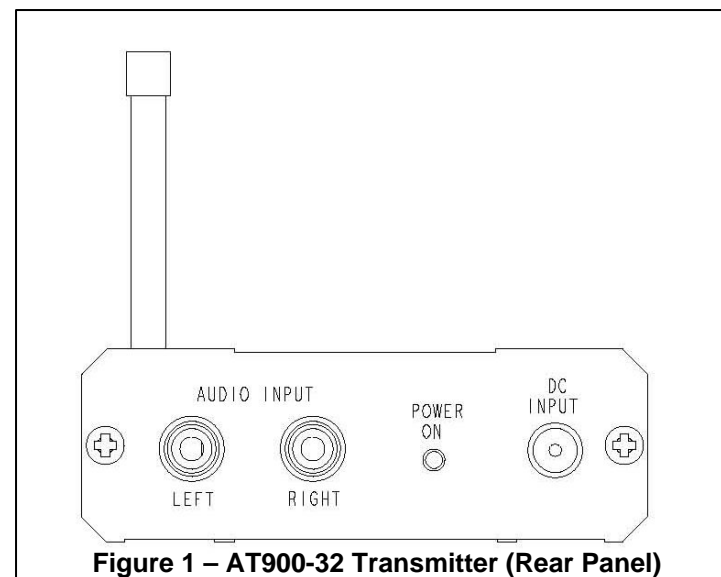
Operating Frequency (32 Channels)	902 – 928 MHz
Operating Voltage Range	7.5 to 18VDC
Operating Current	120 mA
Audio Signal-to-Noise Ratio*	78 dB
Audio Frequency Response (+/-3dB)*	50 - 15,000 Hz
Audio Channel (L/R) Separation (@ 1KHz)*	30 dB
Audio Distortion (@ 1kHzm +/-25KHz deviation)*	0.3%
Stereo Pilot Level	-20 dBc
RF Output Power	1 mW (0 dBm)
Frequency Stability (over operating temp.range)	+/-30 ppm
FM Deviation	+/-75 KHz
Harmonic Suppression	-45 dBc
Antenna Output Impedance	50 Ohms
Operating Temperature Range	-20°C to +70°C
Storage Temperature Range	-50°C to +150°C

\*Audio performance specifications are “end-to-end” characteristics, when used with Model AR900-32 receiver.

### AR900-32 Receiver

Operating Frequency (32 Channels)	902 – 928 MHz
Operating Voltage Range	7.5 to 18VDC
Operating Current	140 mA
Audio Frequency Response (+/-3dB, flat EQ)*	50 - 15,000 Hz
Audio Channel (L/R) Separation (@ 1KHz)*	30 dB
Audio Signal-to-Noise Ratio*	50 dB
Audio Distortion (@ 1kHzm +/-25KHz deviation)*	0.3%
RF Input Sensitivity (30 dB SNR)	-106 dBm
IF Bandwidth	180 KHz
Antenna Input Impedance	50 Ohms
Frequency Stability (over operating temp. range)	+/-30 ppm
Operating Temperature Range	-20°C to +70°C
Storage Temperature Range	-50°C to +150°C

\*Audio performance specifications are “end-to-end” characteristics, when used with Model AT900-32 transmitter.



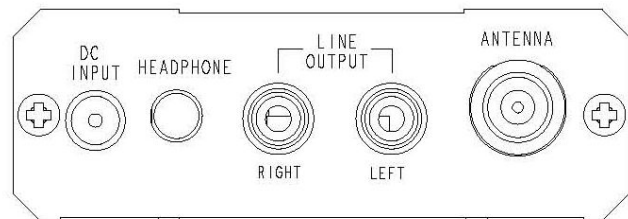
**Figure 1 – AT900-32 Transmitter (Rear Panel)**

**Note 1:** If the audio source device provides only a single (mono) output, a “Y” adaptor (not supplied) may be used to feed the signal to both of the transmitter’s input jacks.

**Note 2:** If a microphone is to be used as the audio source, an external microphone preamp (not supplied) must be used to raise the microphone’s output signal to the required line level.

### Connecting the AR900-32 Receiver’s Audio Outputs

Using the shielded dual audio cable provided, connect the receiver’s line level audio outputs to the appropriate inputs on the device that is to amplify and reproduce (or record) the received audio signals (refer to Figure 2). If the destination device has only a single (mono) input, a “Y” adaptor (not supplied) may be used to combine the receiver’s LEFT and RIGHT outputs, and feed the combined signal to the destination device’s mono input jack.



**Figure 2 – AR900-32 Receiver (Rear Panel)**

### Connecting Power to the Transmitter and Receiver

The AT900-32 and the AR900-32 each require an external power source of between 7.5 and 18 volts DC. A plug-in 120VAC-to-9VDC power converter is supplied with each unit. Insert the power converter's 2.1mm plug into the DC INPUT jack on the unit's rear panel (refer to Figures 1 and 2). Plug each converter into a live 120VAC outlet. The transmitter's red POWER indicator LED (on the front panel) should illuminate. On the receiver, power on is indicated by the illumination of the 2 digit CHANNEL display.

## User Settings and Adjustments

### Selecting the Channel of Operation (Transmitter)

Referring to Figure 3, select the channel on which the transmitter will operate. Available channels are numbered 01 through 32 (inclusive). To select a channel, use a small flat-blade screwdriver to rotate the selector on the left to the "tens digit" of the desired channel, then rotate the selector on the right to the "ones digit" of the desired channel. As an example, to select channel 26 rotate the selector on the left to "2," and rotate the selector on the right to "6." Be sure to line up the selector's triangle-shaped pointer (not the screwdriver slot) to the desired number. Please note that setting the channel to "00" is the same as channel "01." Similarly, setting the channel to any number from "33" to "99" (inclusive) is the same as channel "32." *If several AT900-32 transmitters are to be used simultaneously in a common area (so as to broadcast multiple audio programs), each transmitter must be set to its own unique channel.*

### Noise Reduction (Transmitter and Receiver)

The transmitter and receiver are each equipped with active noise reduction circuits. However, these circuits are normally turned off (factory preset), to provide the widest possible frequency response for high fidelity music listening. If the received audio program has an excessive level of background noise or “hiss” (especially noticeable during periods of silence, such as the pause between songs on a CD), activating the noise reduction circuits in both the transmitter and receiver will minimize the objectionable noise.

To activate the noise reduction circuits, locate the NR switches on the transmitter and receiver printed circuit boards (refer to Figures 5 and 6). Slide the actuator of each switch to its NR position.

**Note 1:** Be sure to readjust the transmitter’s audio modulation level (as described on page 6) anytime the noise reduction circuits are either activated or turned off.

**Note 2:** The noise reduction switches in the transmitter and the receiver must be set to match each other (either on or off), in order to maintain balanced audio frequency response.

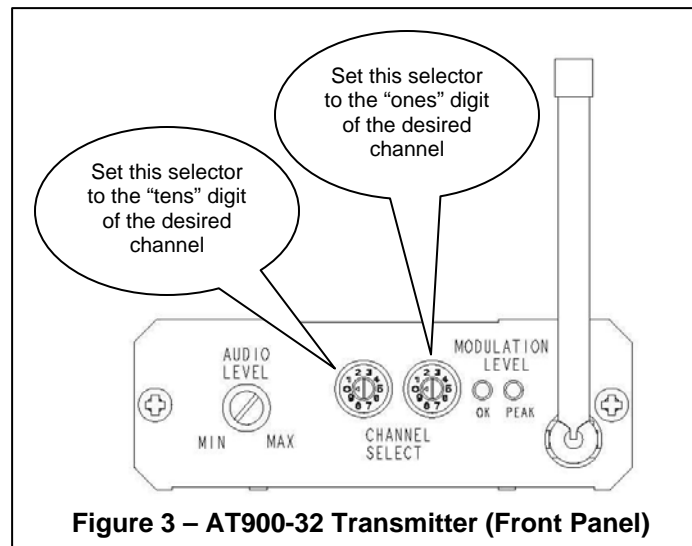


Figure 3 – AT900-32 Transmitter (Front Panel)

### Selecting the Channel of Operation (Receiver)

The AT900-32 provides 32 user-selectable channels. Referring to Figure 4, use the DOWN and UP buttons on the unit’s front panel to select the desired channel. Momentarily pressing either button will raise or lower the displayed channel by one; holding either button continuously will rapidly cycle the channels up or down as appropriate. If multiple AT900-32 transmitters are operating in a common area to broadcast multiple audio programs, the AR900-32 receiver can receive any of the desired programs simply by selecting the corresponding channel.

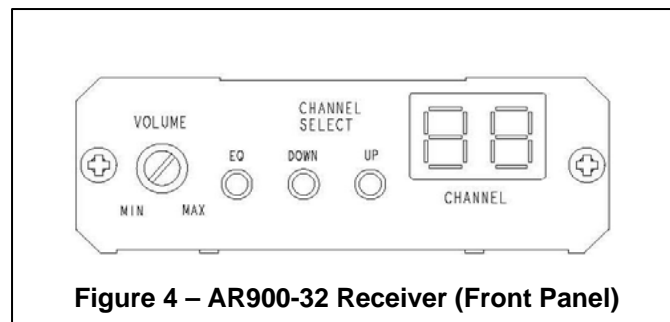


Figure 4 – AR900-32 Receiver (Front Panel)

### Setting the Transmitter's Audio Modulation Level

With an active audio source connected to the transmitter's AUDIO INPUTS, adjust the AUDIO LEVEL control on the front panel such that the green MODULATION LEVEL OK indicator is illuminated whenever audio is present, and the red PEAK indicator flashes only on the loudest audio transients. To prevent distorted audio at the receiver, the red PEAK indicator should not be illuminated continuously.

**Note:** The audio source device may have a volume control that adjusts the level of the audio signal(s) being fed to the transmitter's inputs. If your source device (e.g. portable/personal CD player or MP3 player) is so equipped, initially set that device's volume control to its approximate midpoint. Then, adjust the transmitter's AUDIO LEVEL control as described above. Use the following guidelines to "fine tune" the settings:

- If the audio output at the receiver suffers from excessive background noise, the source device's volume level is probably set too low. Increase the source device's volume control a bit, and readjust the transmitter's AUDIO LEVEL control accordingly.
- If the audio output at the receiver is distorted, and/or if the transmitted audio program can be heard on (or interferes with) either or both of the channels adjacent to the selected channel of operation, the source device's volume level is probably set too high. Reduce the source device's volume control a bit, and readjust the transmitter's AUDIO LEVEL control accordingly.

### Adjusting Headphone Volume (Receiver)

If desired, stereo headphones or earbuds equipped with a standard 3.5mm mini-phone plug may be used with the AR900-32 receiver. Insert the plug into the HEADPHONE jack on the rear panel. The output level at this jack may be adjusted using the VOLUME control on the front panel.

**Note:** The receiver's VOLUME control only affects the volume at the headphone jack. It does not affect the volume at the receiver's line level audio outputs.

### Local/Distance (DX) Jumper (Receiver)

The AR900-32 receiver has an internal jumper that determines the receiver's RF sensitivity. The factory default position for this jumper is the Distance (DX) setting, configuring the receiver for maximum sensitivity. This is the appropriate setting for most applications (to allow for maximum reception range). However, if multiple AT900-32 transmitters are to be used in a common area (so as to broadcast multiple audio programs), and any are set to operate on numerically adjacent channels, there is a possibility of interference from one channel to the adjacent channel. Switching the jumper to the LOCAL setting on any receiver(s) that exhibit such interference may reduce or eliminate this interference. To do this, perform the following steps:

1. Locate the LOCAL/DX jumper on the circuit board. In its factory default position, the jumper connects the middle pin of the 3-pin group to the DX pin, leaving the LOCAL pin open.
2. Remove the jumper from its default position, and reinsert it such that it connects the middle pin to the LOCAL pin (leaving the DX pin open).



## Internal Settings

The AT900-32 transmitter and the AR900-32 receiver each have internal jumpers and/or switches (on their respective printed circuit boards) that are preset at the factory to provide the proper configuration for most applications. The following sections describe these settings, and provide guidelines for when it may be necessary or desirable to modify them.

### **CAUTION!**

**The AT900-32 transmitter and the AR900-32 receiver both contain sensitive electronic components on their respective circuit boards. These devices can be permanently damaged by static discharge if adequate anti-static procedures are not observed. Such damage is not covered by the Applied Wireless, Inc. Limited Warranty. Before attempting to modify any of the internal settings, discharge any static that may have accumulated on your body by touching a metal object or surface that is earth grounded, such as a cold water pipe. In addition, your work area should be as static-free as possible (for example, do not work in an area in which the floor is covered by nylon carpeting).**

In order to modify any internal settings, the unit's circuit board must be removed from the enclosure, as follows:

1. Disconnect the power and audio cables from the unit.
2. For the receiver, remove the antenna. For the transmitter, the antenna is permanently attached. Do not attempt to remove it.
3. For the receiver, remove the VOLUME knob.
4. For the transmitter, remove the two Phillips screws securing the front panel.
5. For the receiver, remove the two Phillips screws securing the rear panel.
6. The two long edges of the circuit board are retained in lengthwise grooves along the inside walls of the enclosure. Gently slide the circuit board out of the enclosure. As you remove the circuit board, hold it by its edges only.
7. Once the internal setting(s) have been modified as necessary, reassemble the unit by reversing the steps above.

## EQualization (Receiver)

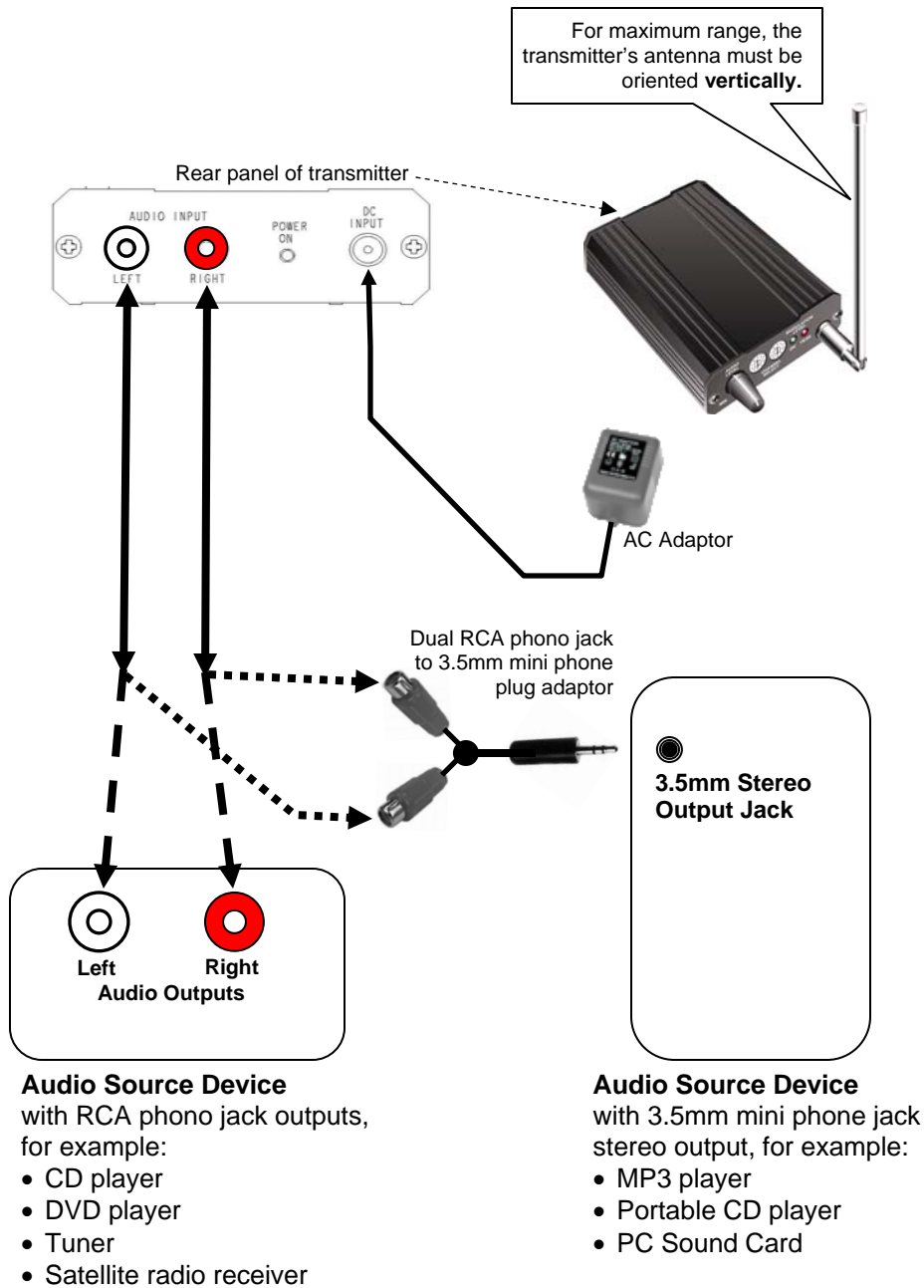
When headphones or earbuds are used with the receiver, the EQ button on the receiver's front panel may be used to select one of four preset audio equalization (tone) profiles, enabling you to select the audio response characteristics that you prefer. The chosen equalization profile only affects the audio from the headphone jack on the rear panel. The audio signals at the line level audio output phono jacks remain "flat" regardless of the equalization profile chosen for the headphones.

Momentarily pressing the EQ button will cause the 2-digit CHANNEL indicator to display the current equalization profile. The four equalization profiles are as follows:

- E1: No Equalization (flat response)
- E2: Bass Boost
- E3: Treble Boost
- E4: Bass Boost + Treble Boost

Pressing the EQ button again (while the display is indicating the equalization profile) will advance to the next profile. The 2-digit CHANNEL indicator will automatically revert to displaying the receiver's current channel when the EQ button has not been pressed for two to three seconds.

## Transmitter Connection Diagram



## Receiver Connection Diagram

