

Rhein Tech Laboratories, Inc.  
360 Herndon Parkway  
Suite 1400  
Herndon, VA 20170  
<http://www.rheintech.com>

Client: EDH (South Africa) (Pty) Ltd  
Model: FlightScope X1  
Standards: FCC 15.245/IC RSS-210  
FCC/IC ID: QXP-SS661/4612A-SS661  
Report #: 2013032

## **Appendix N: Internal Photographs**

Please refer to the following pages.

## **FlightScope X1 Golf Sensor System Photographs (FCC Filing)**

### **Internal Parts and Assemblies**

January 2013

Main Sensor Assembly

- Lid

- Front sub-assembly

  - Carrier Plate

  - RF PCB

  - DC&IF PCB

  - Tilt PCB

- Rear Sub-assembly

  - Rear shell

  - Shielding box cover and base

  - Power Supply PCB

  - DSP PCB

  - Connectors and cables

    - DC connector and loom

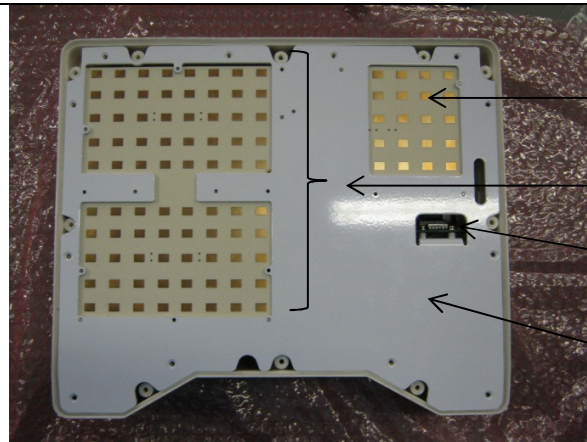
    - USB connector and loom

- Interconnecting ribbon cables

  - Ribbon cable – DSP to DCIF

  - Ribbon cable – DSP to Tilt

- Fasteners

Front lid removed

Transmit antenna

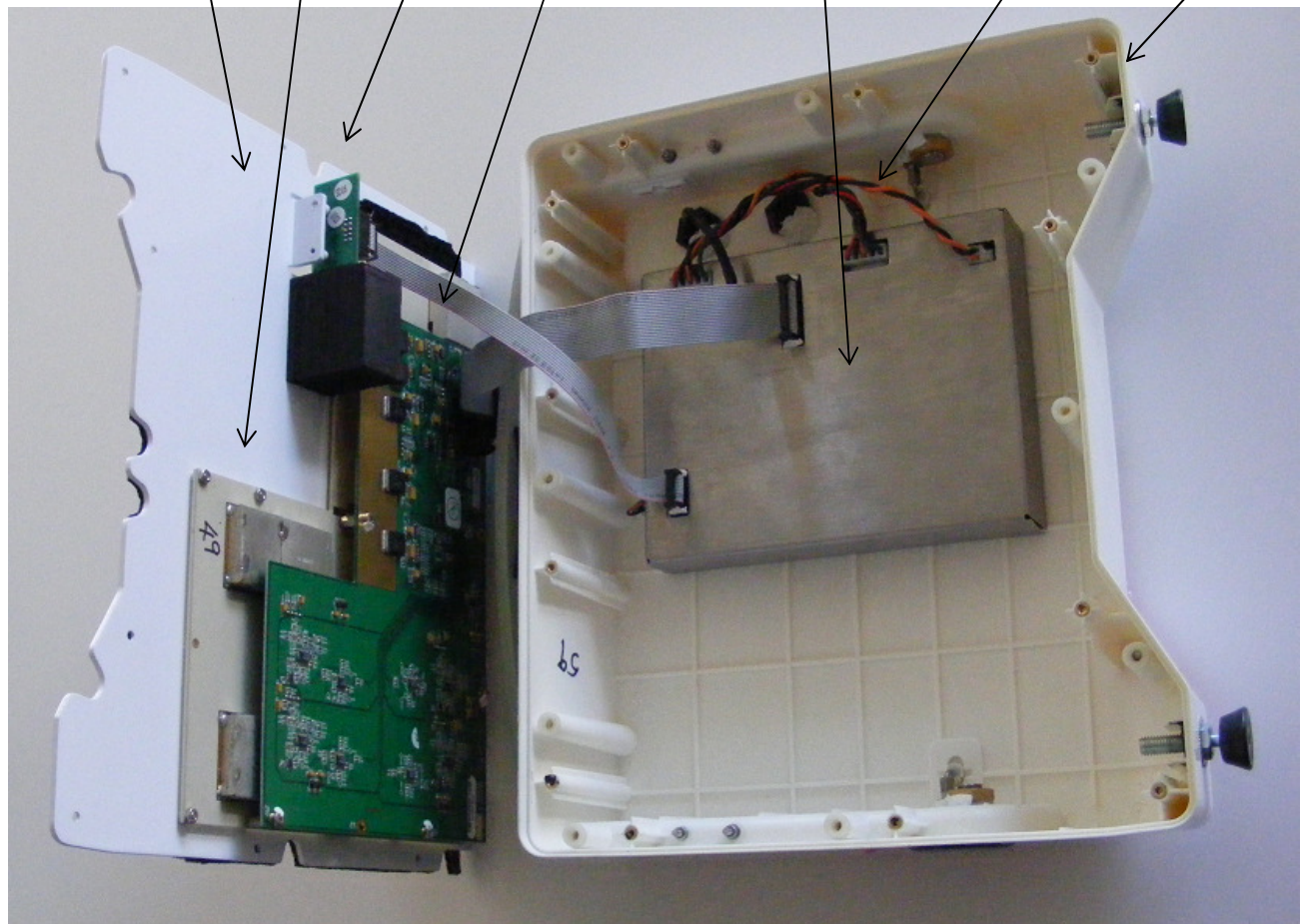
Receive antenna (4 arrays of 5x4 elements ea)

Tilt sensor

Carrier plate

Front/Rear Subassembly integration

Carrier Plate RF board Tilt PCB DC/IF PCB Shielding box (digital section) Power/Data Looms Rear shell



**Rear Internal Assy – Shielding Box cover removed, DSP and PSU PCBs exposed**

DSP PCB

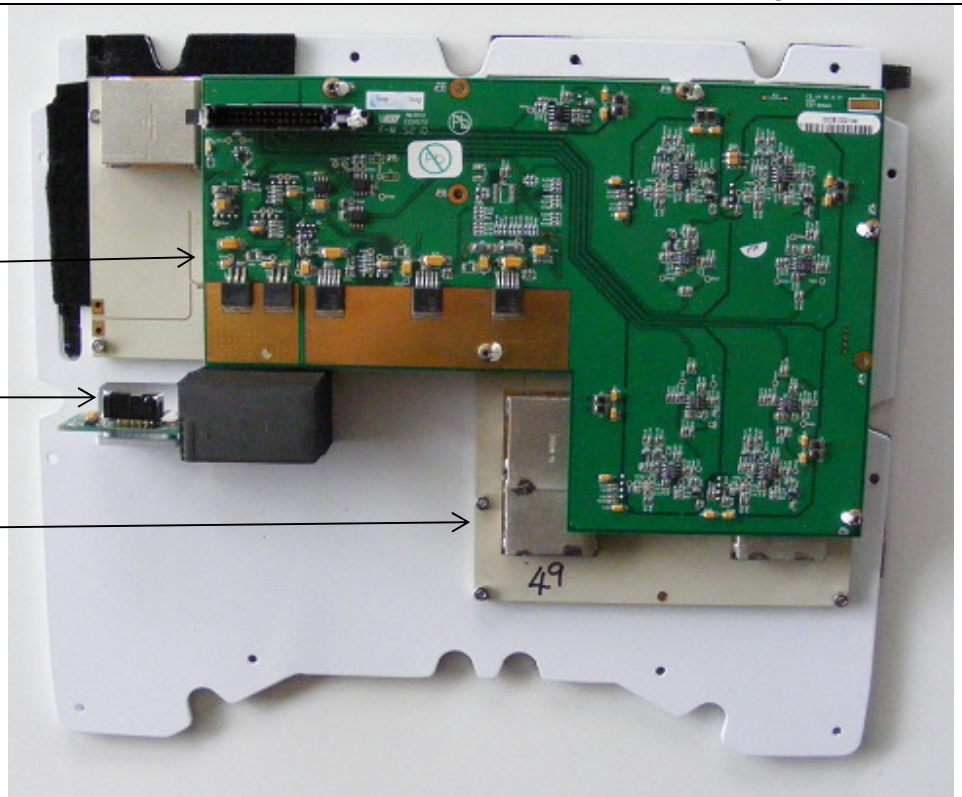
PSU PCB

**Front Subassembly – Sandwich of Carrier Plate, RF PCB, DC&IF PCB, and with Tilt PCB on angled bracket**

DCIF PCB

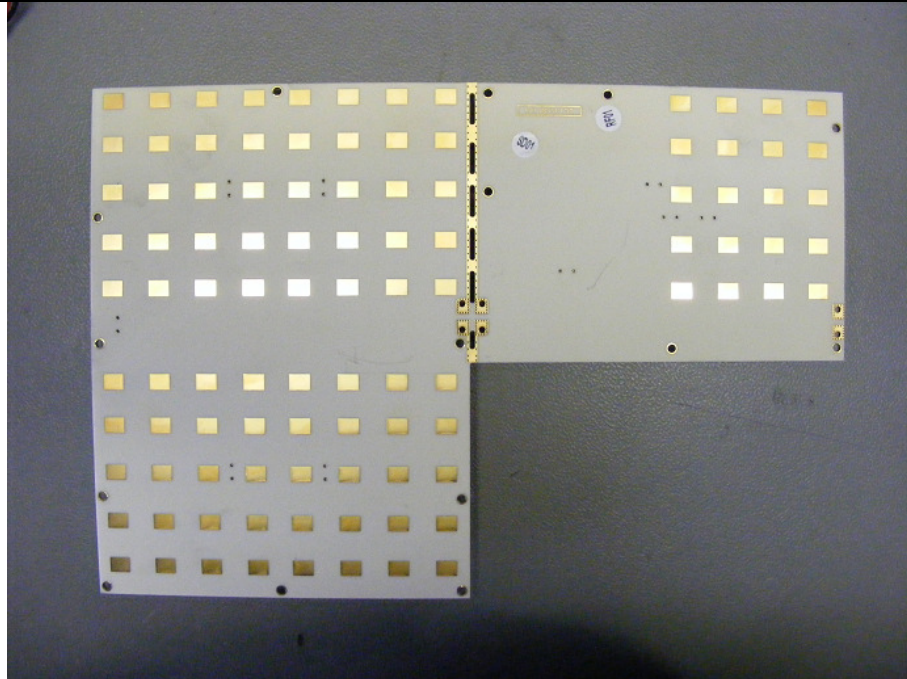
Tilt PCB

RF PCB

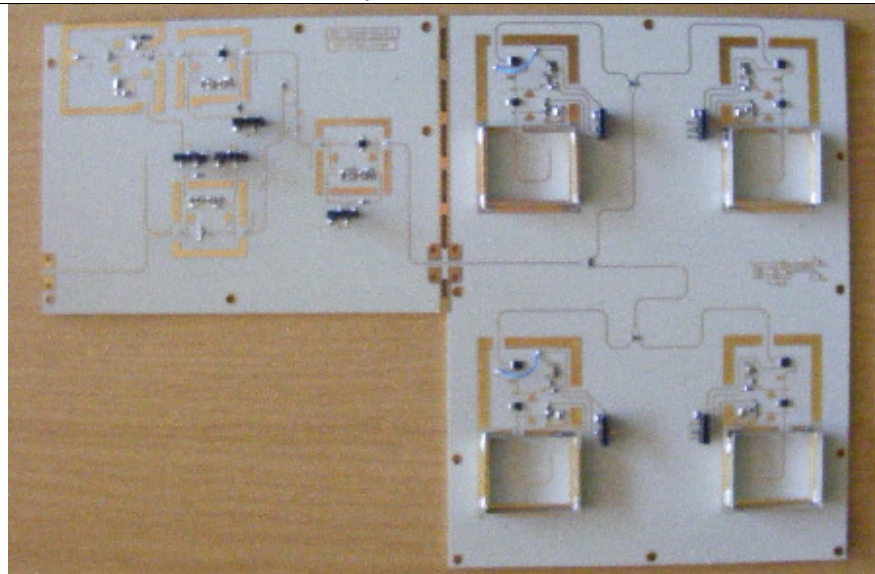




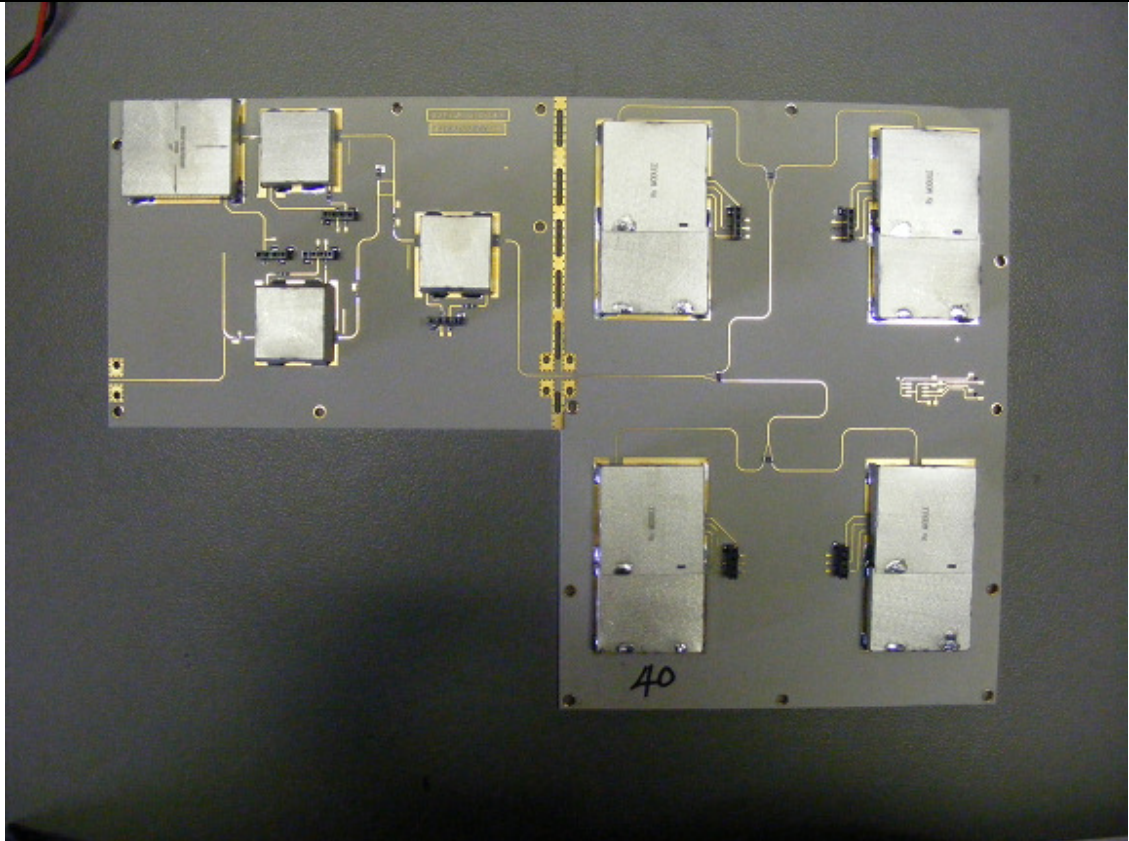
RF circuit board microstrip patch antenna side



RF board component side without shields

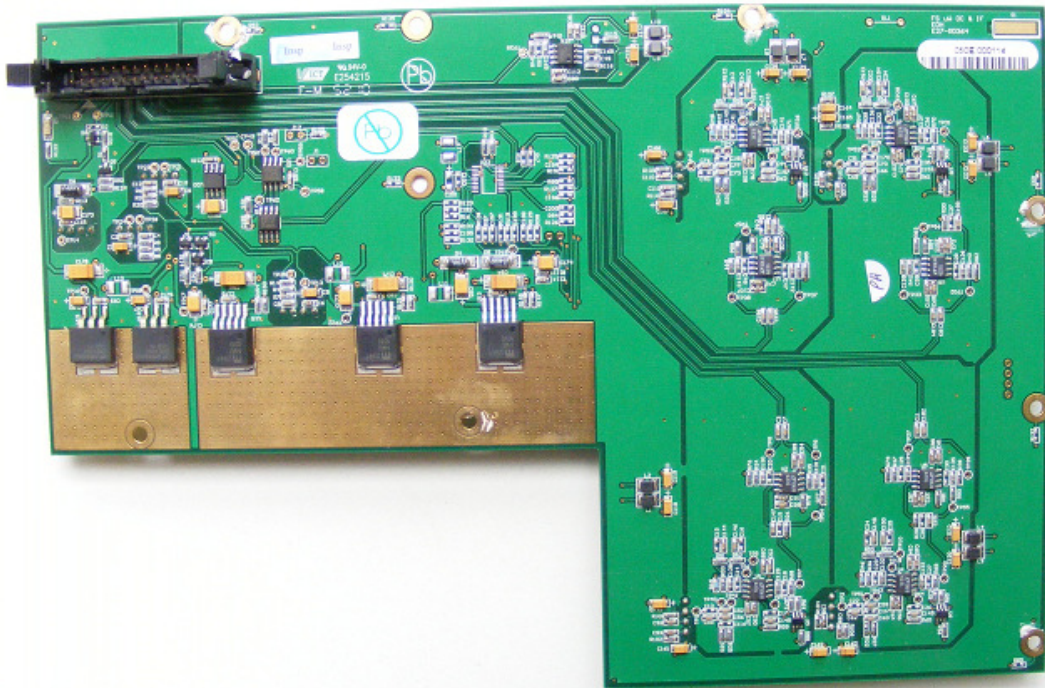


**RF board component side with shields**

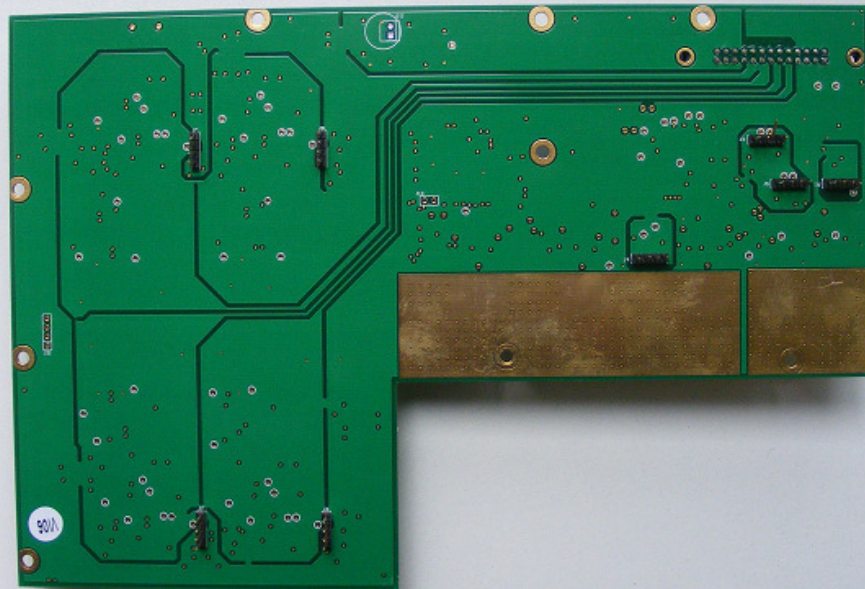




**DC&IF PCB component side**

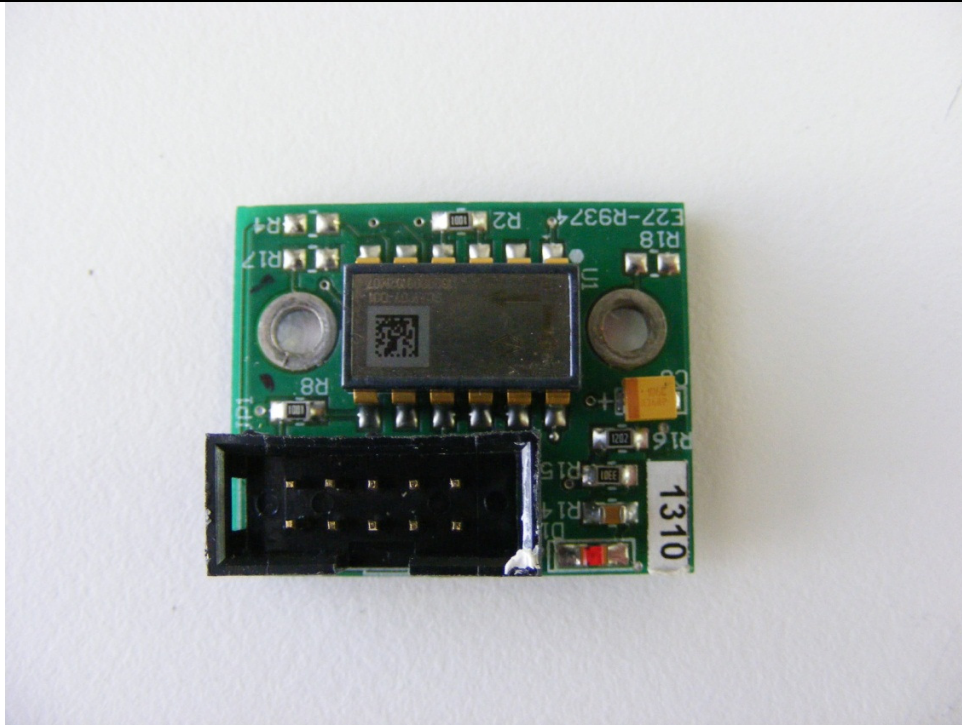


**DC&IF PCB reverse side**

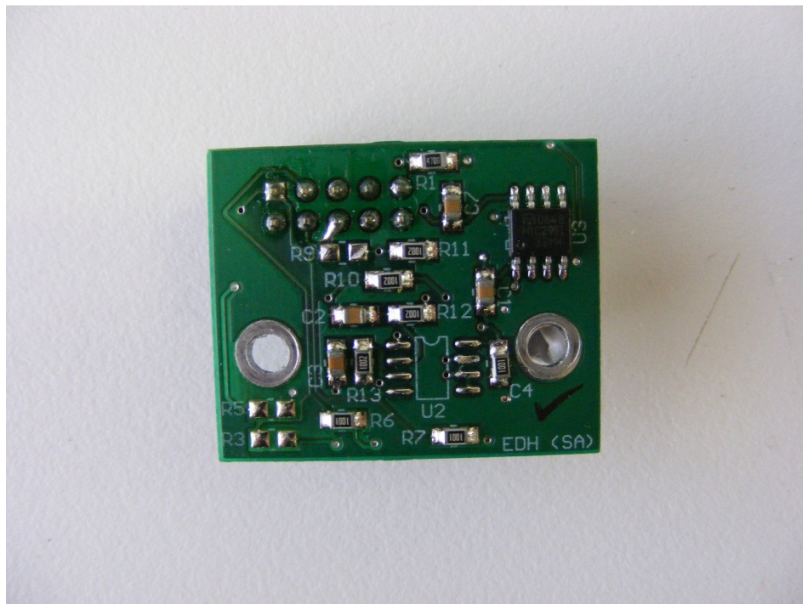




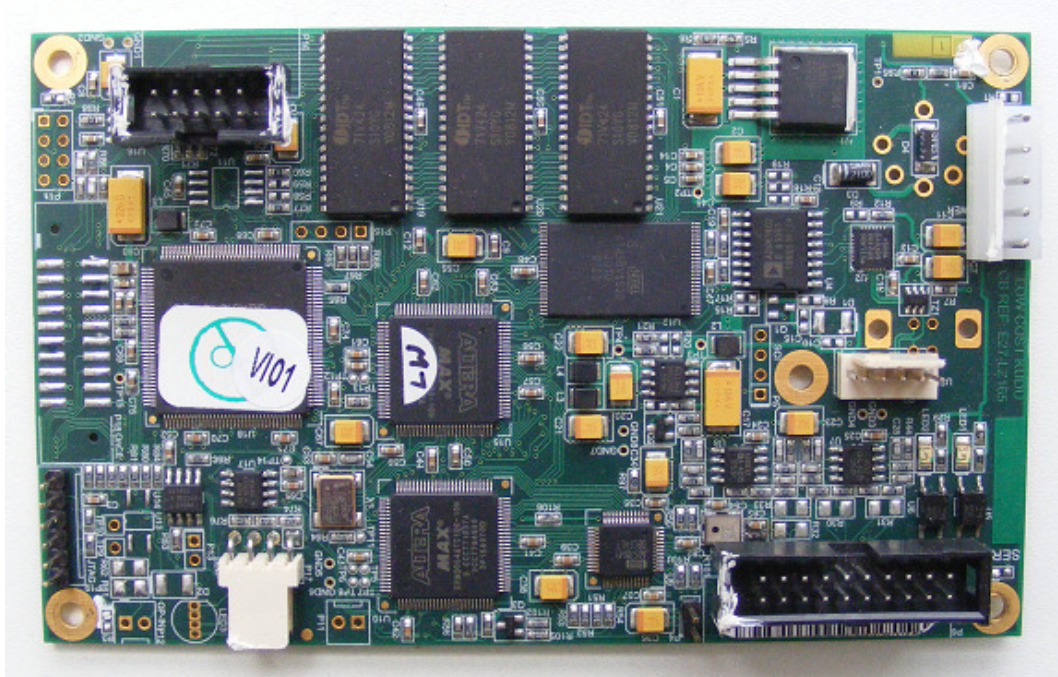
Tilt board top side



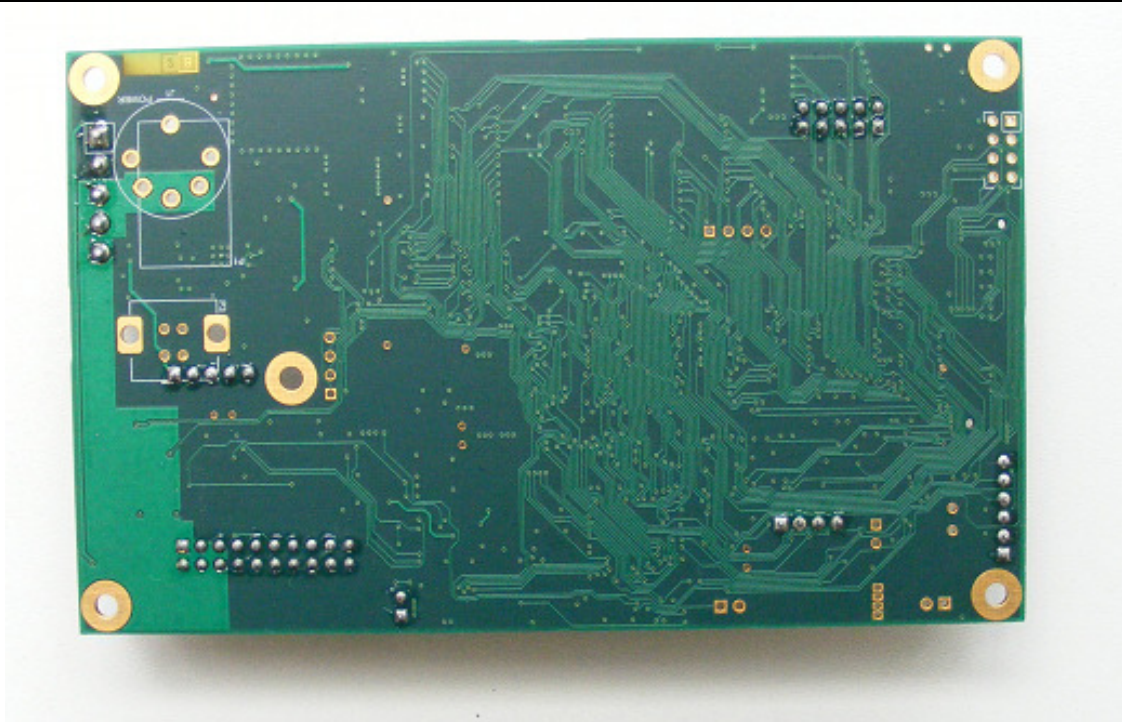
Tilt board reverse side



DSP board component side

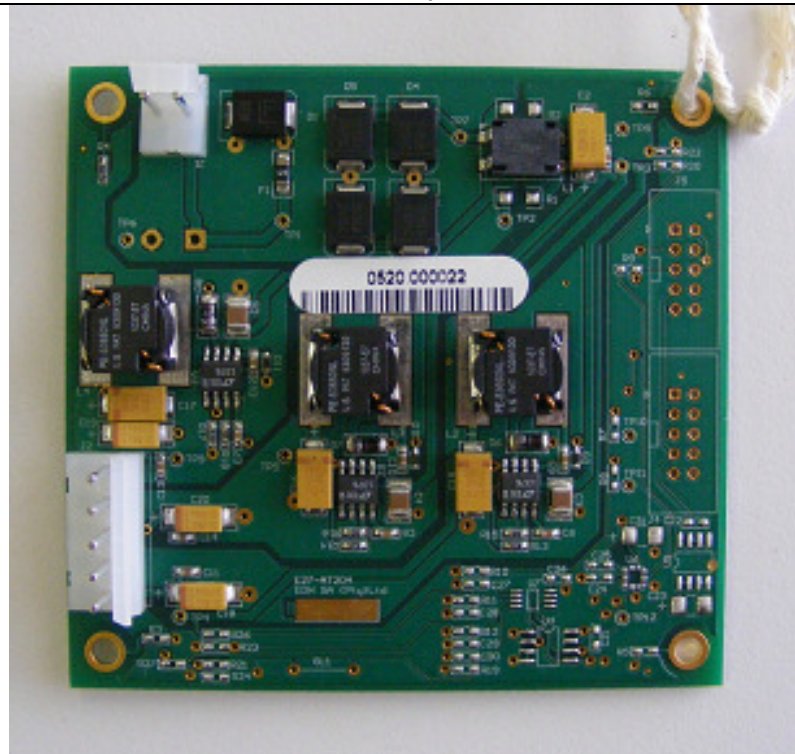


DSP board reverse side

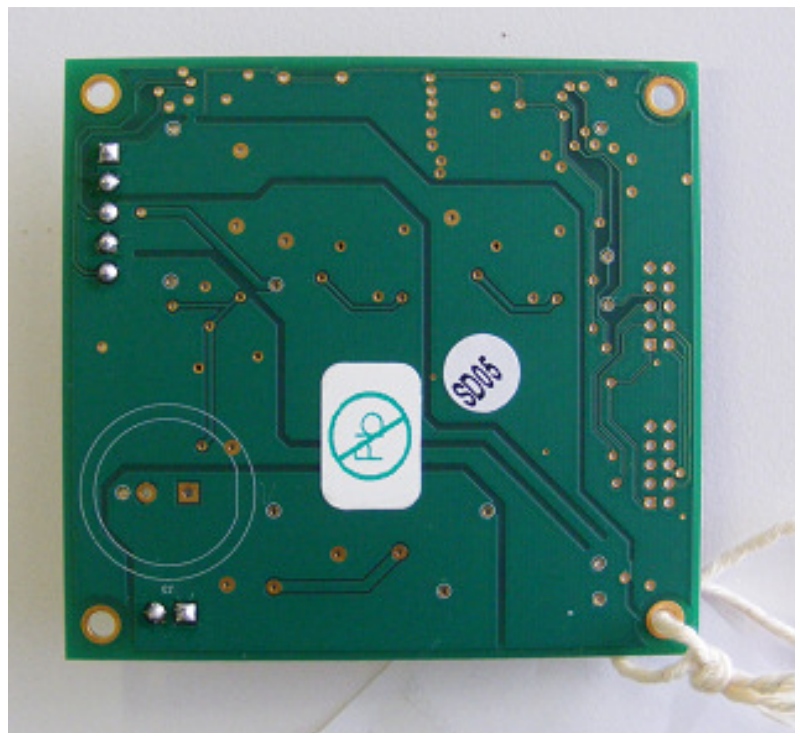




PSU board component side



PSU board reverse side



**DC power connector & loom****USB connector and loom****Ribbon Cable(s)**