

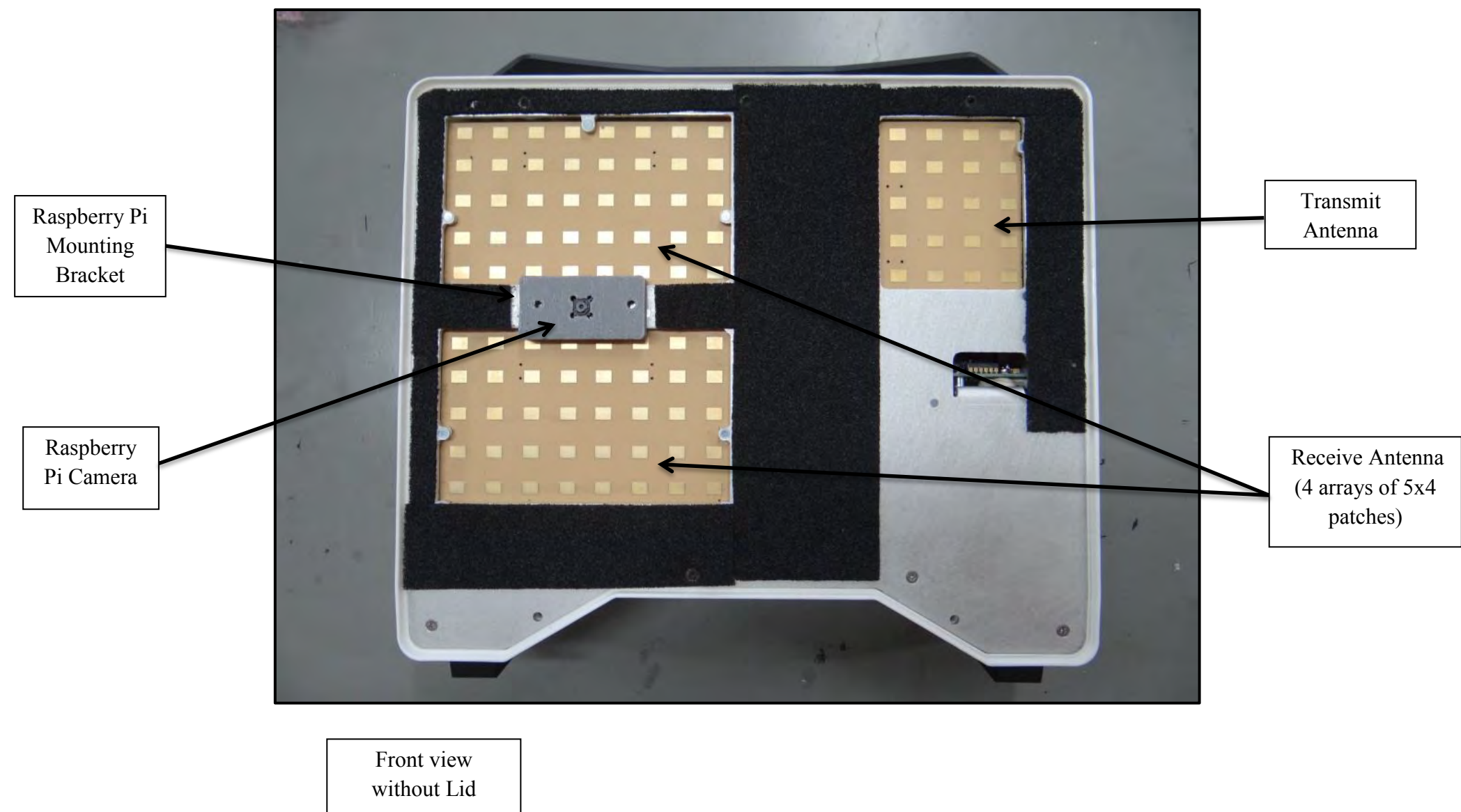
Rhein Tech Laboratories, Inc.
360 Herndon Parkway
Suite 1400
Herndon, VA 20170
<http://www.rheintech.com>

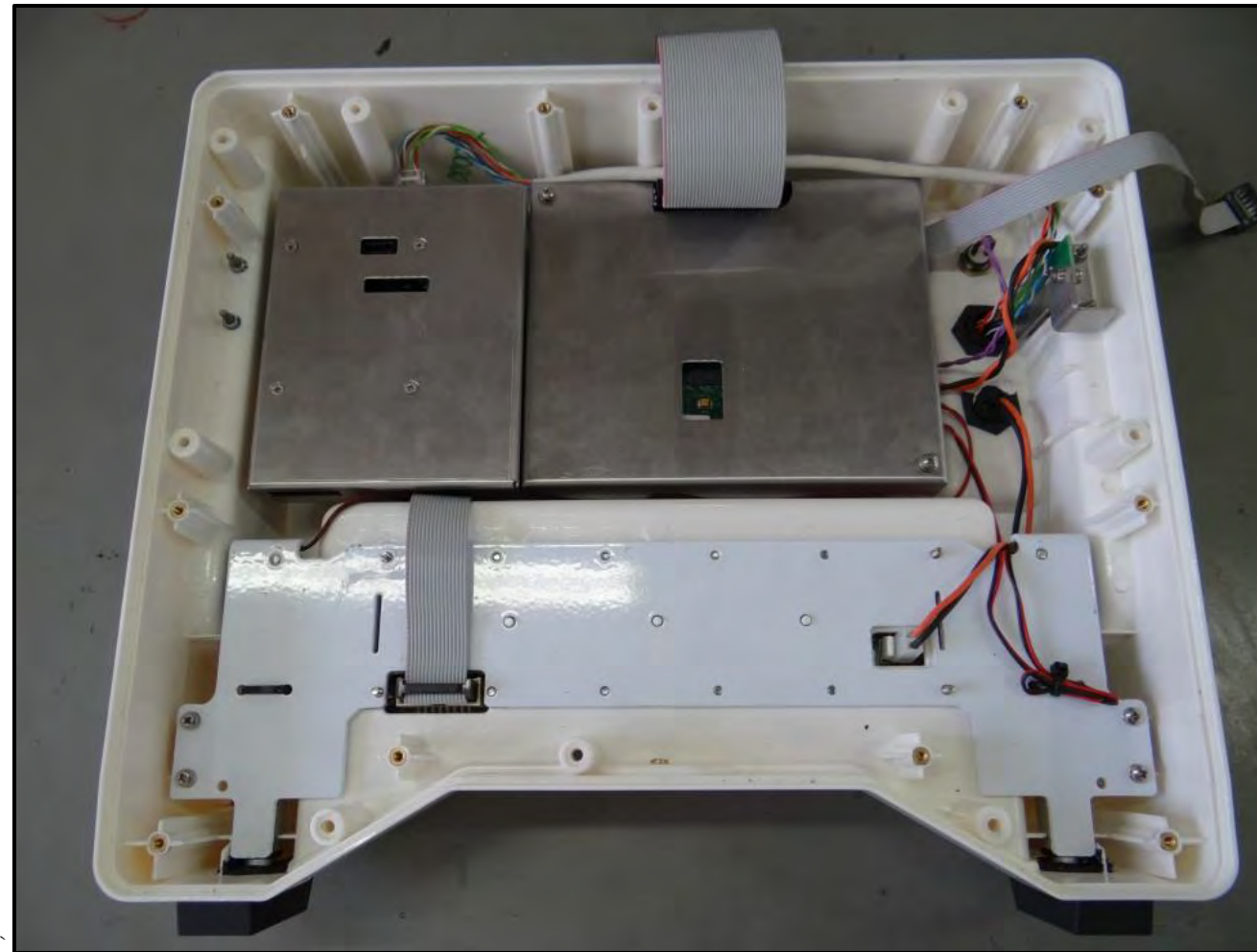
Client: FlightScope (Pty) Ltd
Model: X2 ELITE
Standards: FCC 15.245/IC RSS-210
FCC/IC ID: QXP-HP2441/4612A-HP244
Report #: 2014207

Appendix N: Internal Photographs

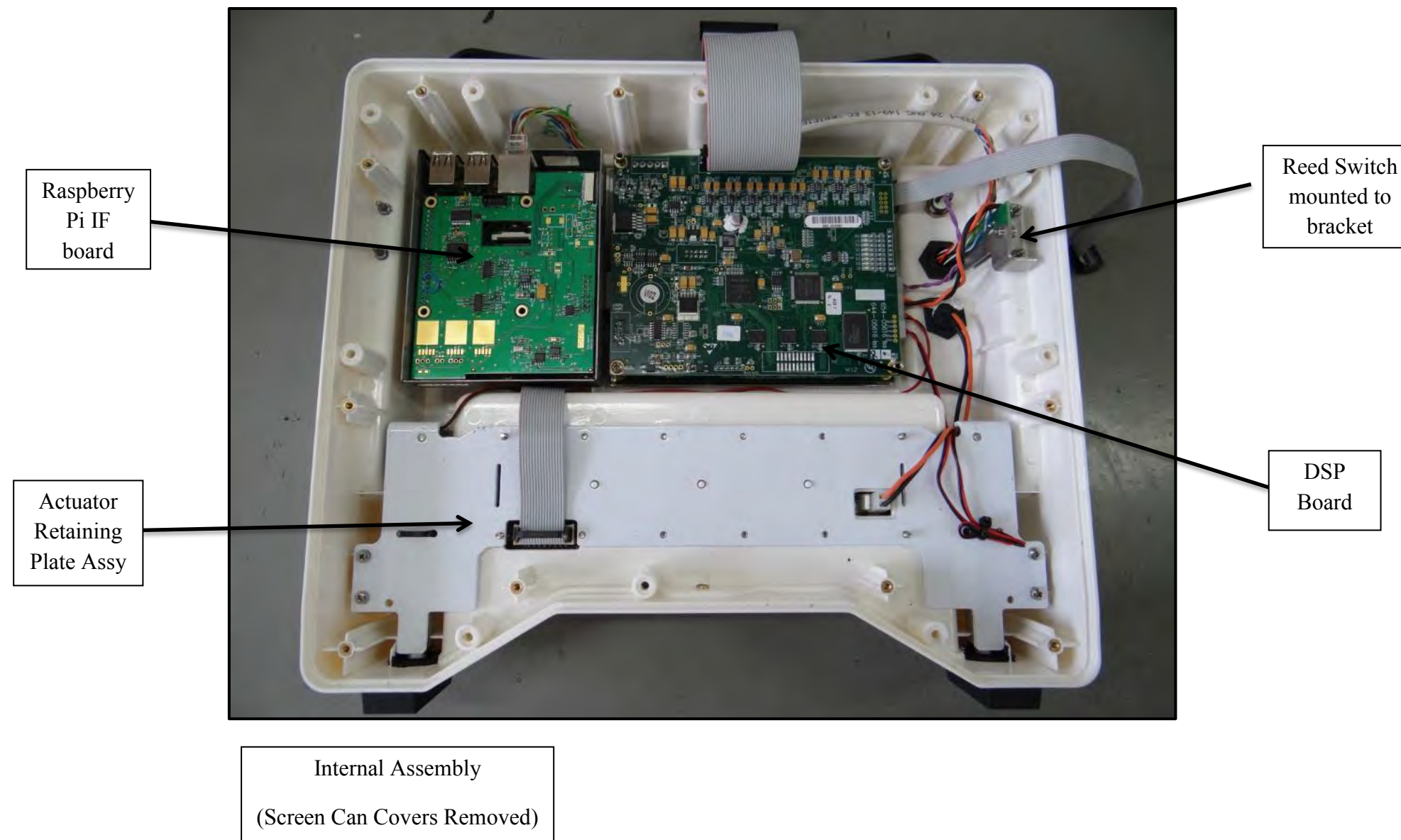
Please refer to the following pages.

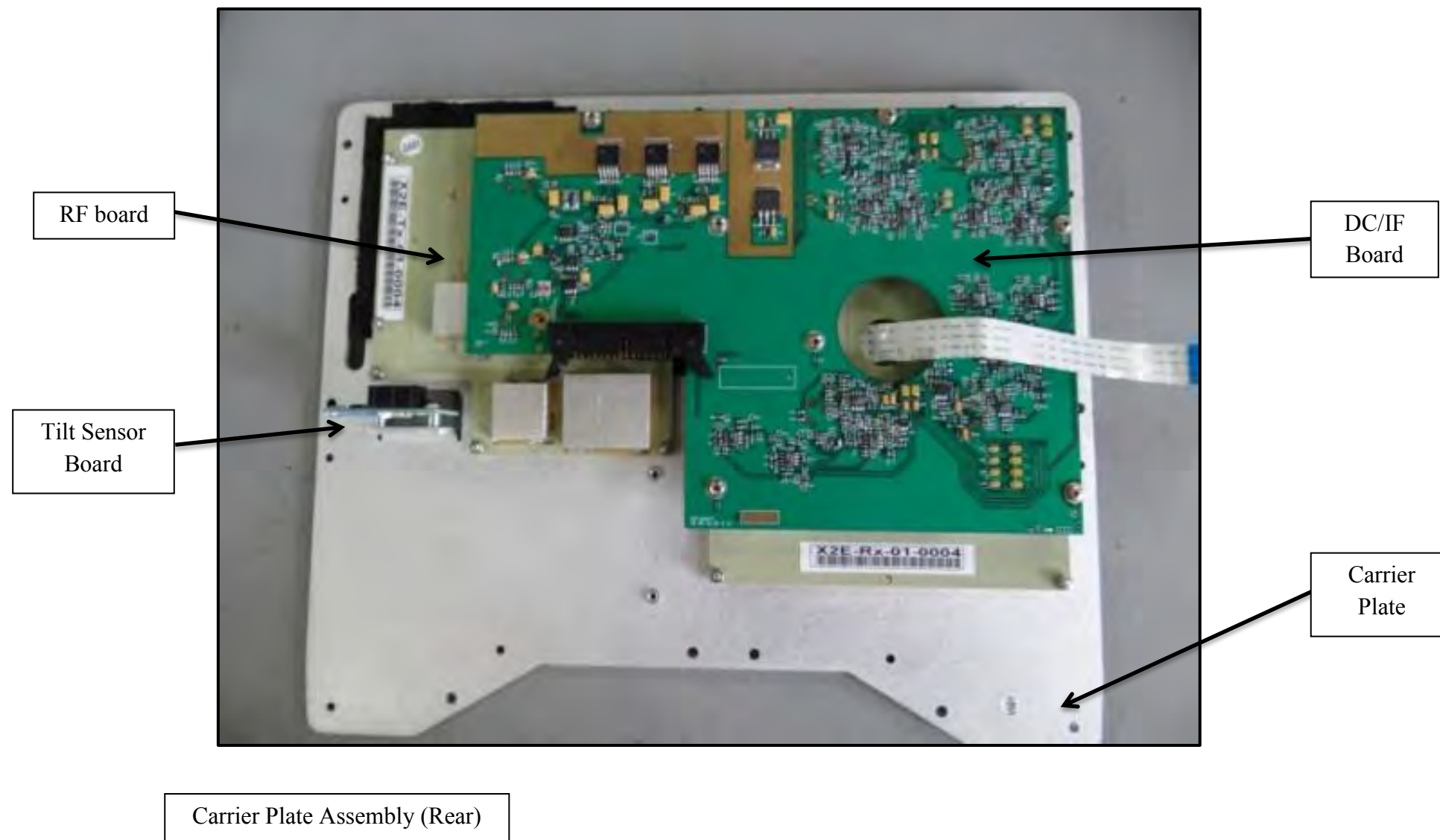


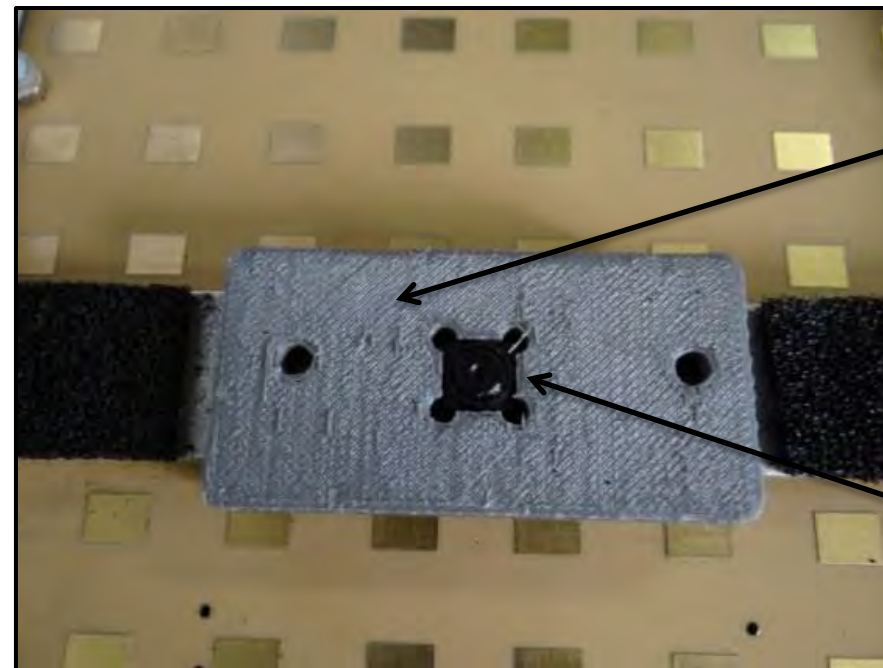




Internal Assembly with Screen Can Covers
(Carrier assembly removed)







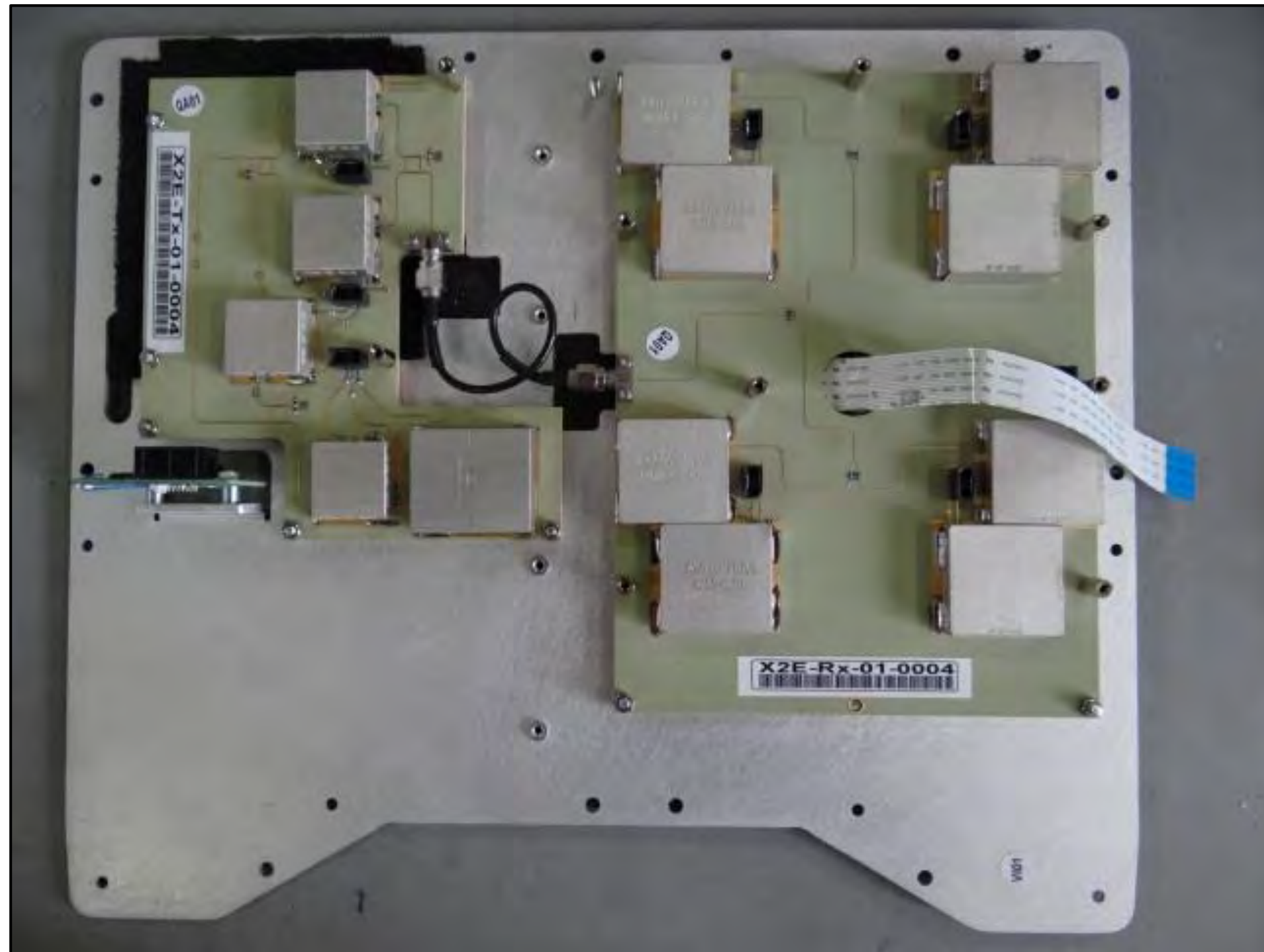
Raspberry Pi
Camera

Raspberry Pi
Camera mounting
bracket

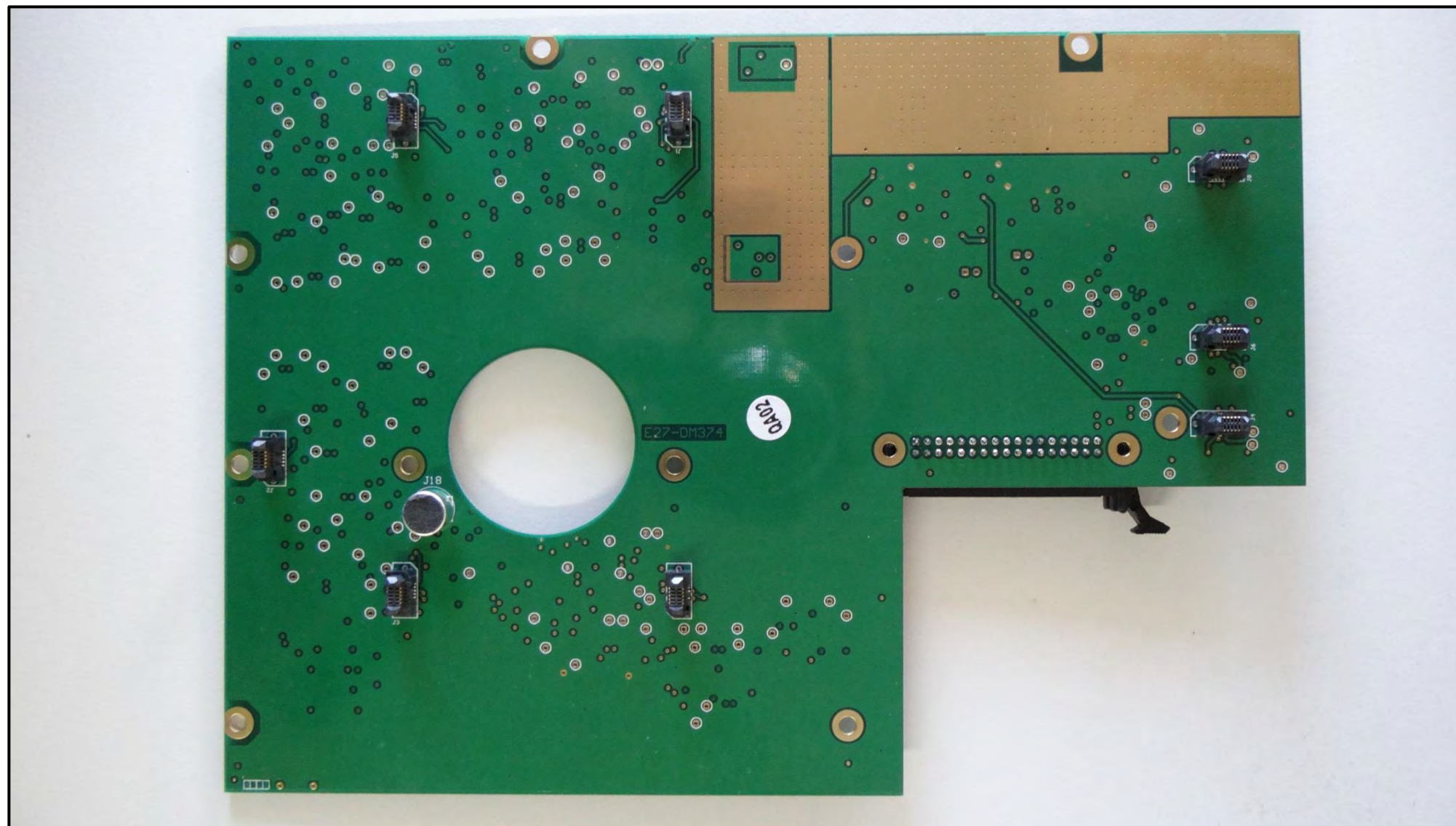
Raspberry Pi Camera +
Mounting Bracket



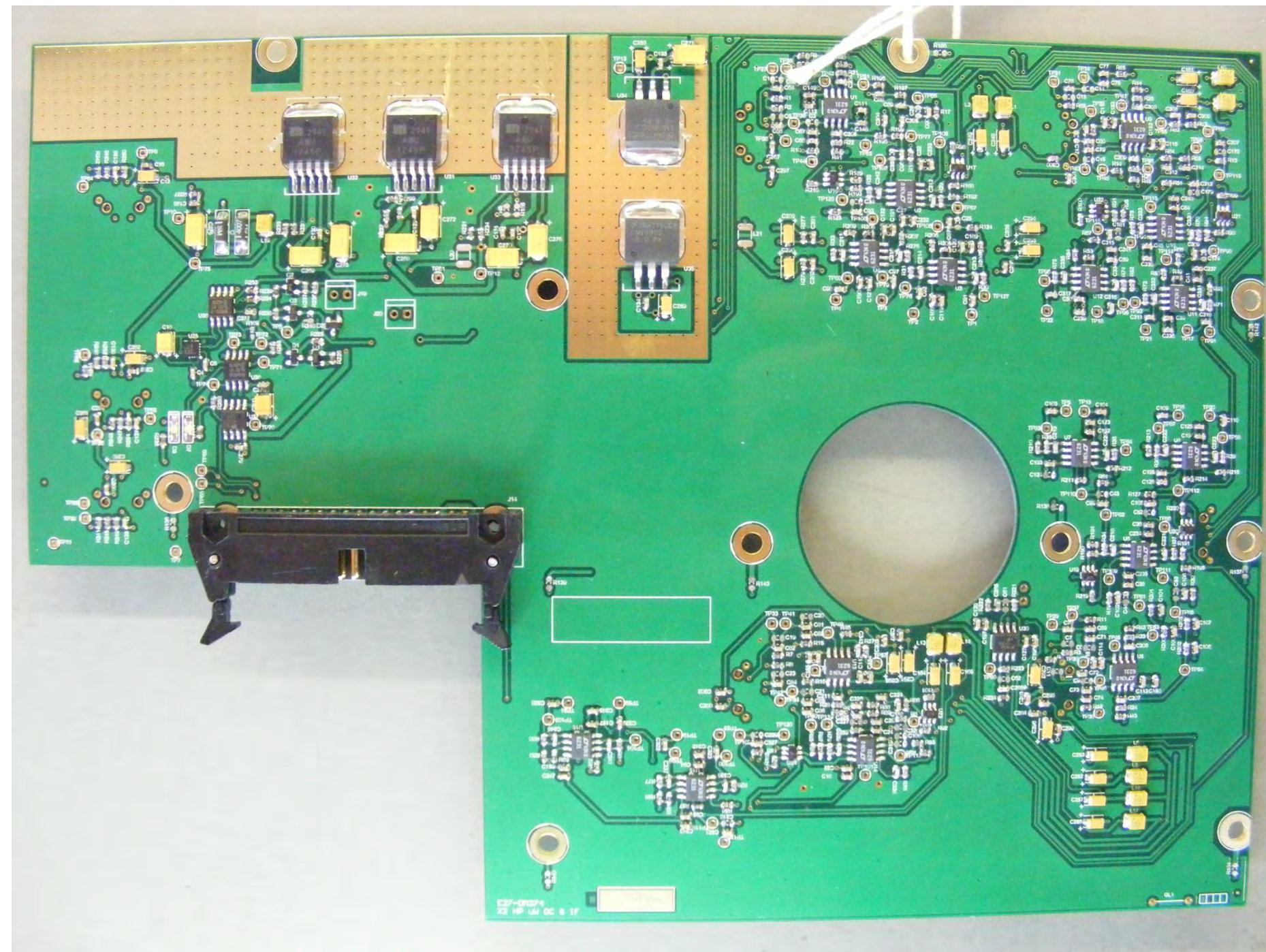
RF Board Component side
without shields mounted to
carrier plate.



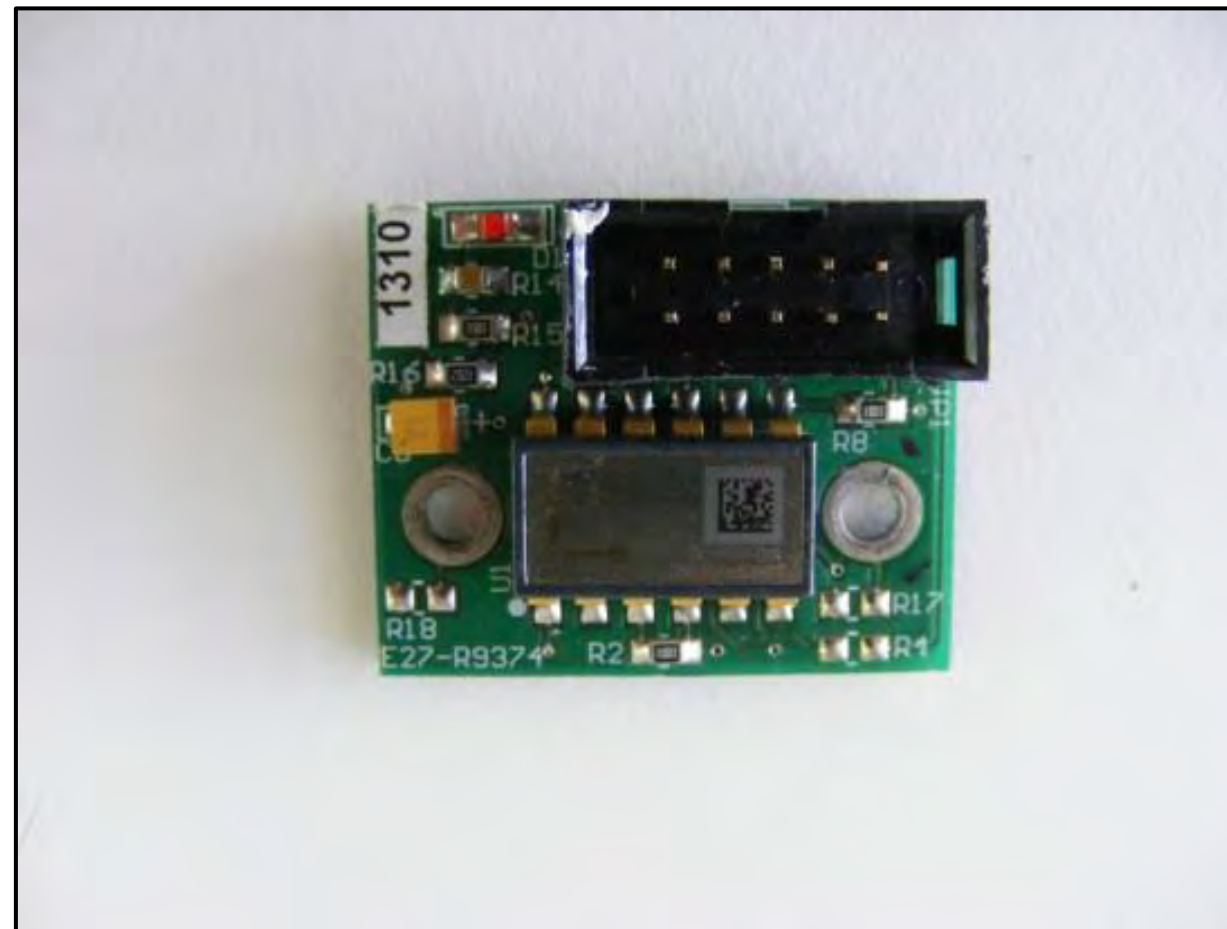
RF Board Component side
with shields mounted to
carrier plate.



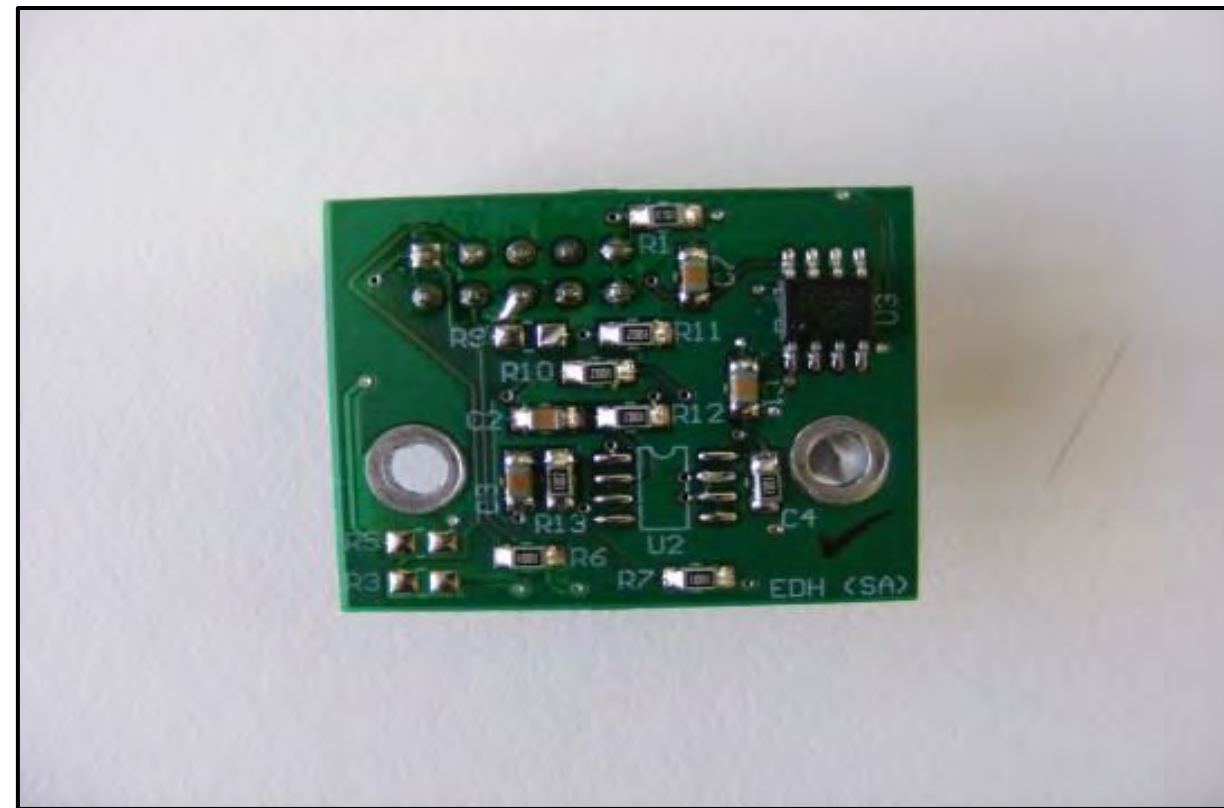
DC/IF board bottom side



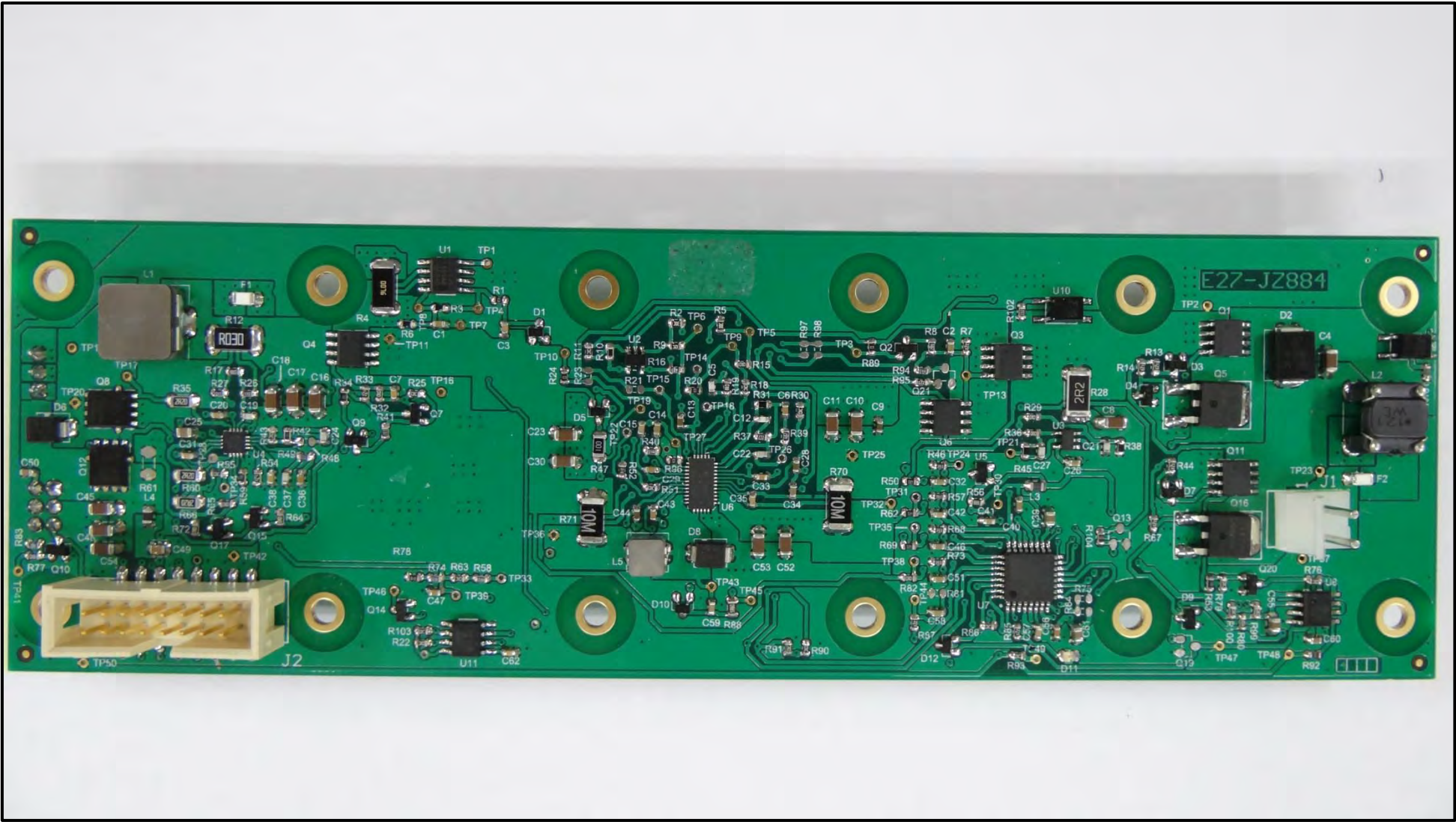
DC/IF board component side



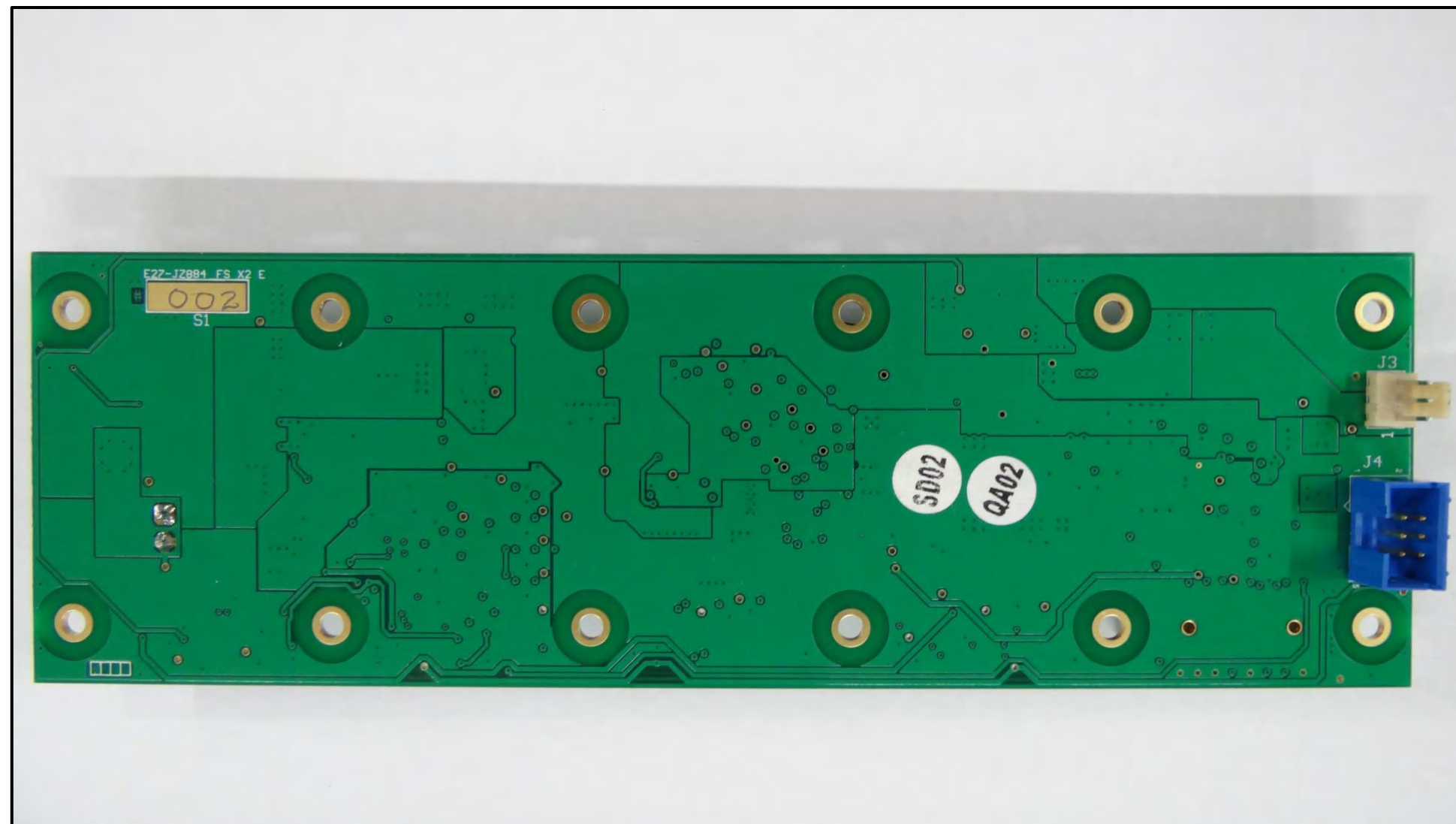
Tilt Sensor board component side



Tilt Sensor board bottom side



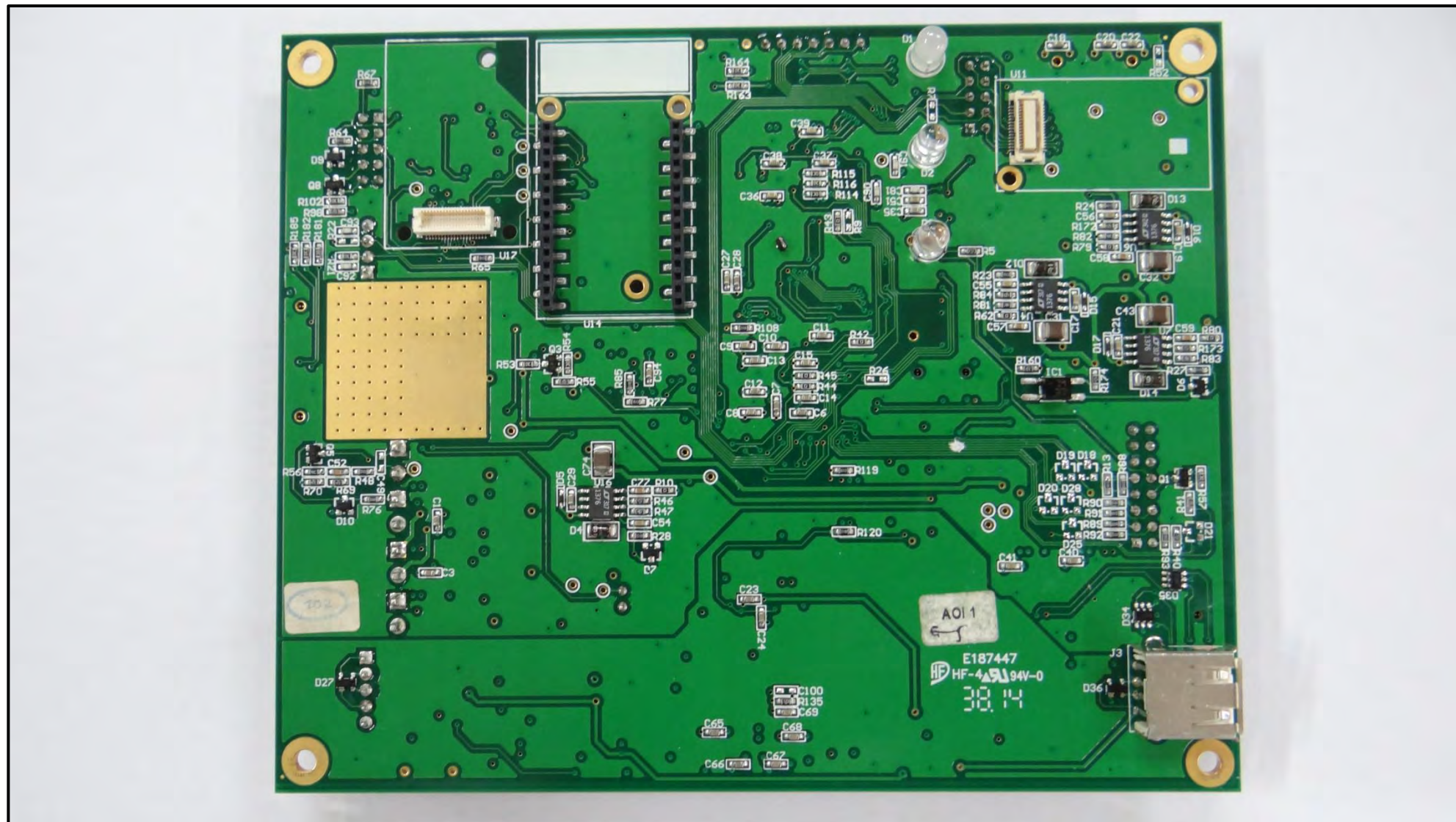
Battery Board component side



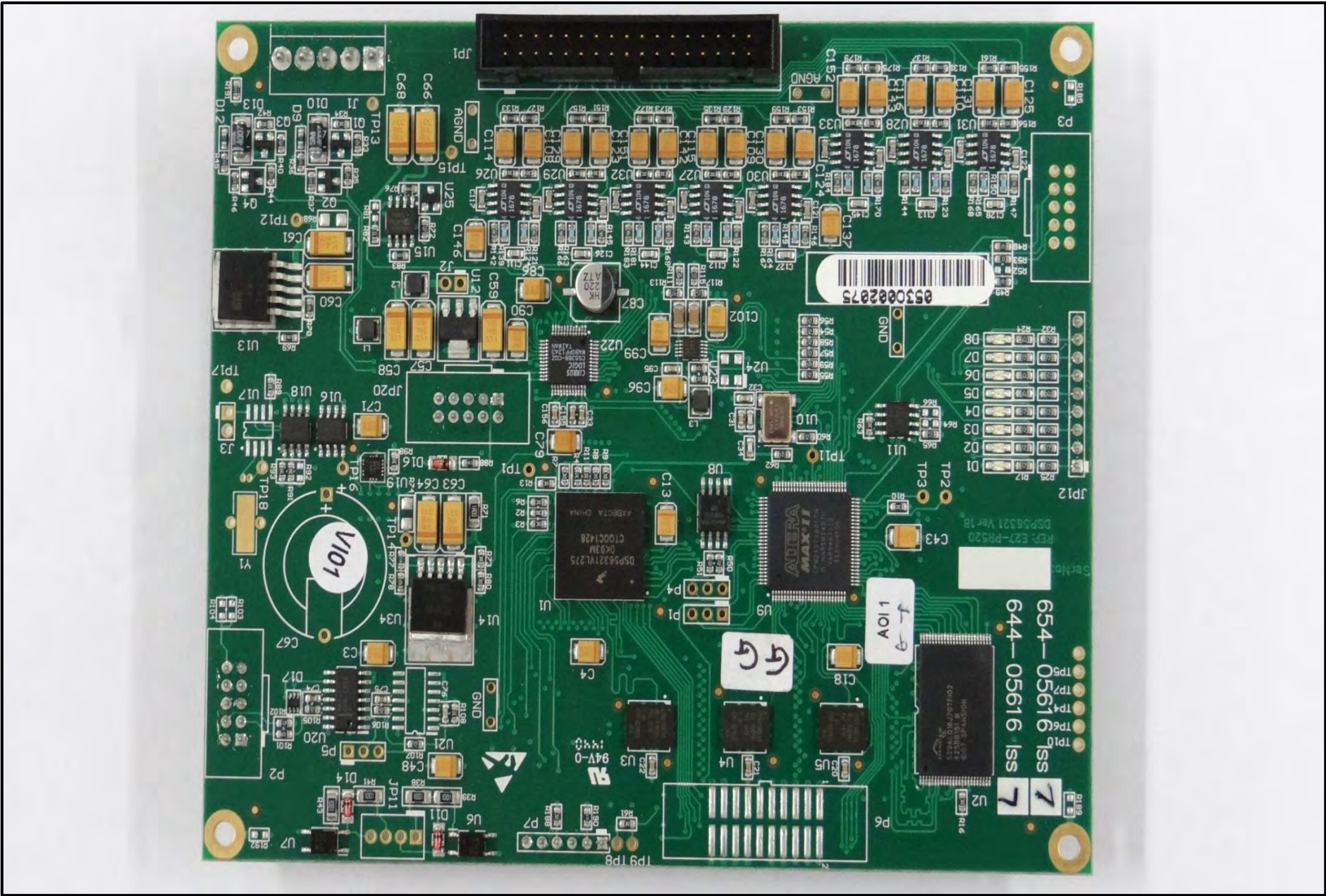
Battery Board bottom side



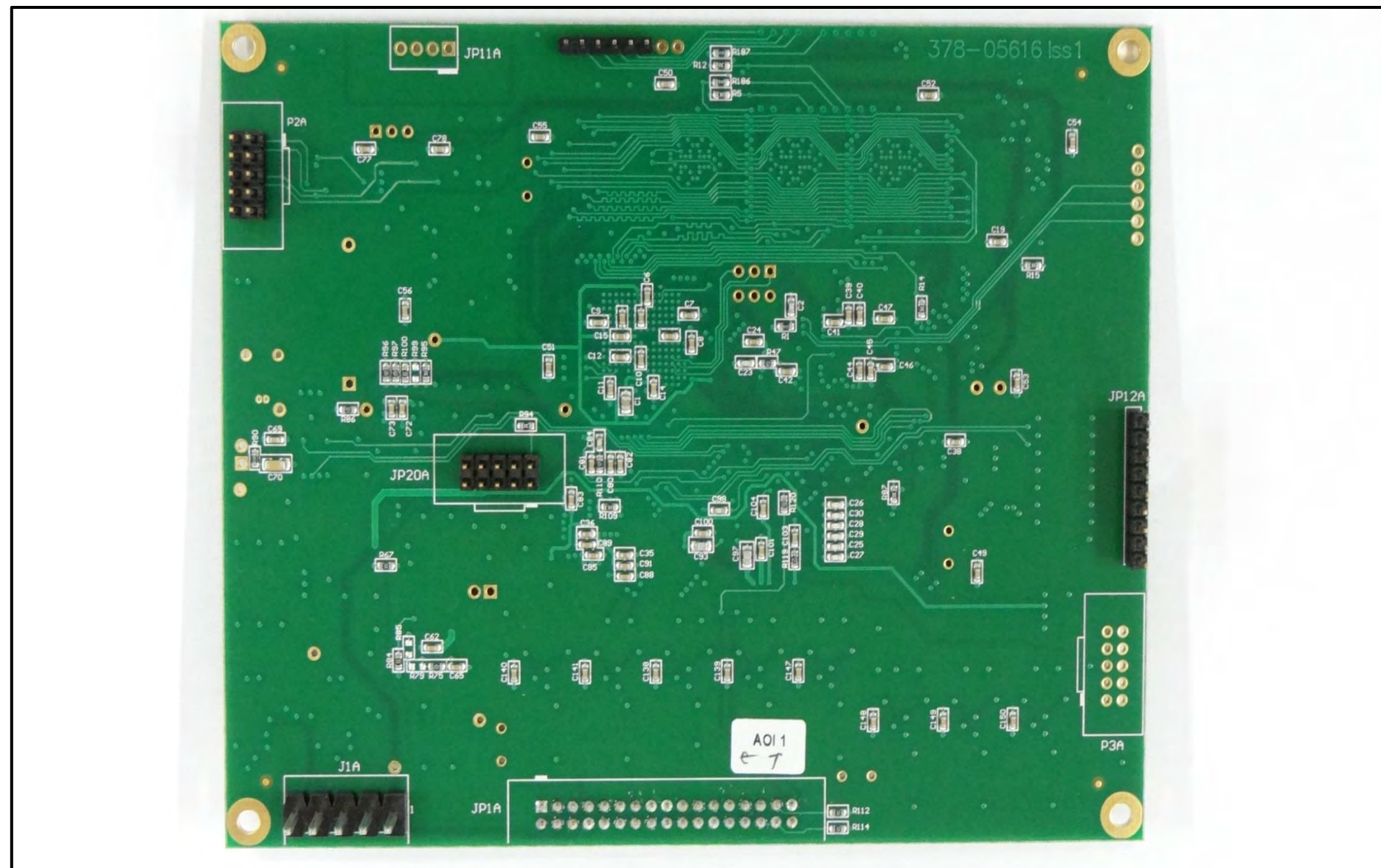
Accessory Board component side



Accessory Board bottom side



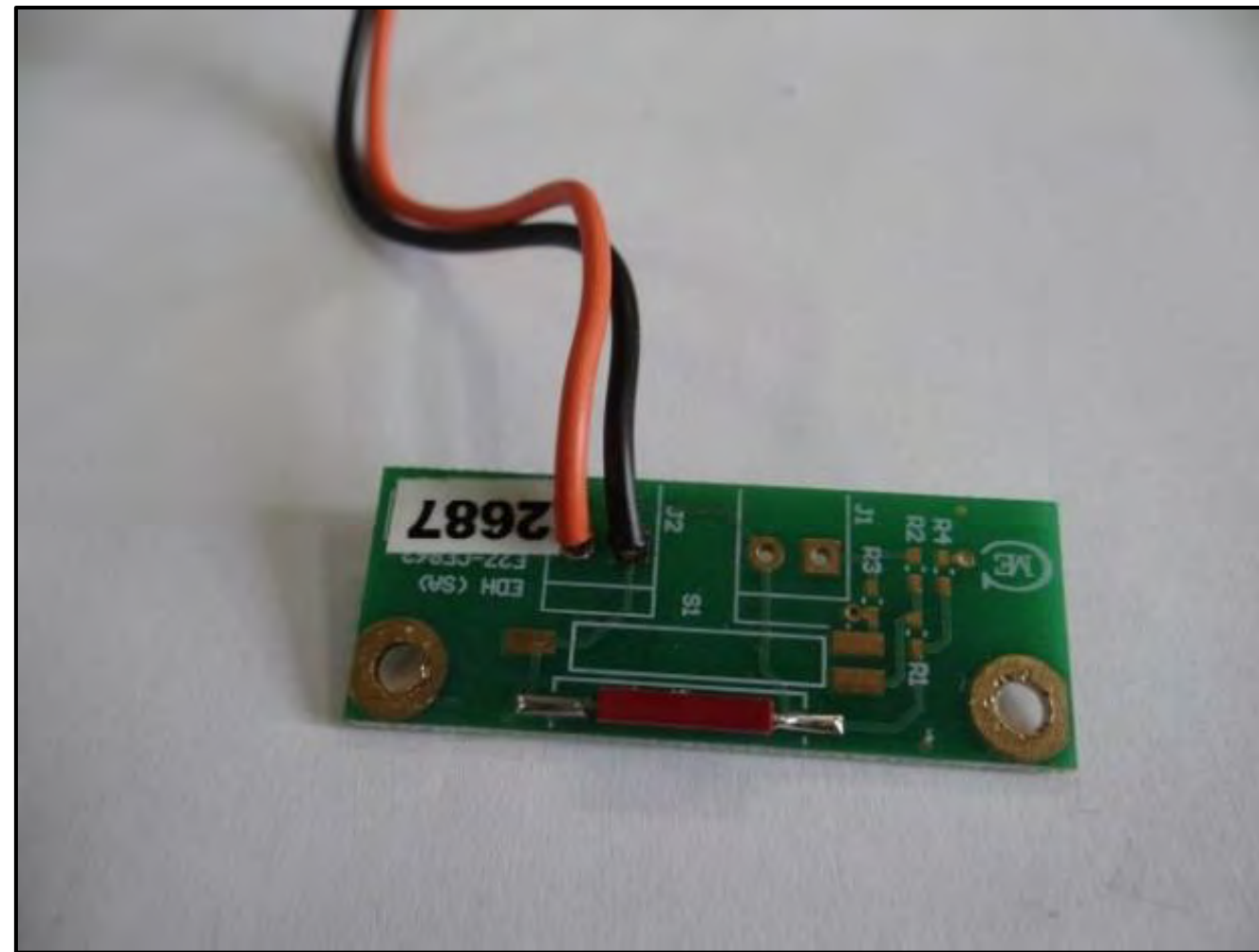
DSP Board component side



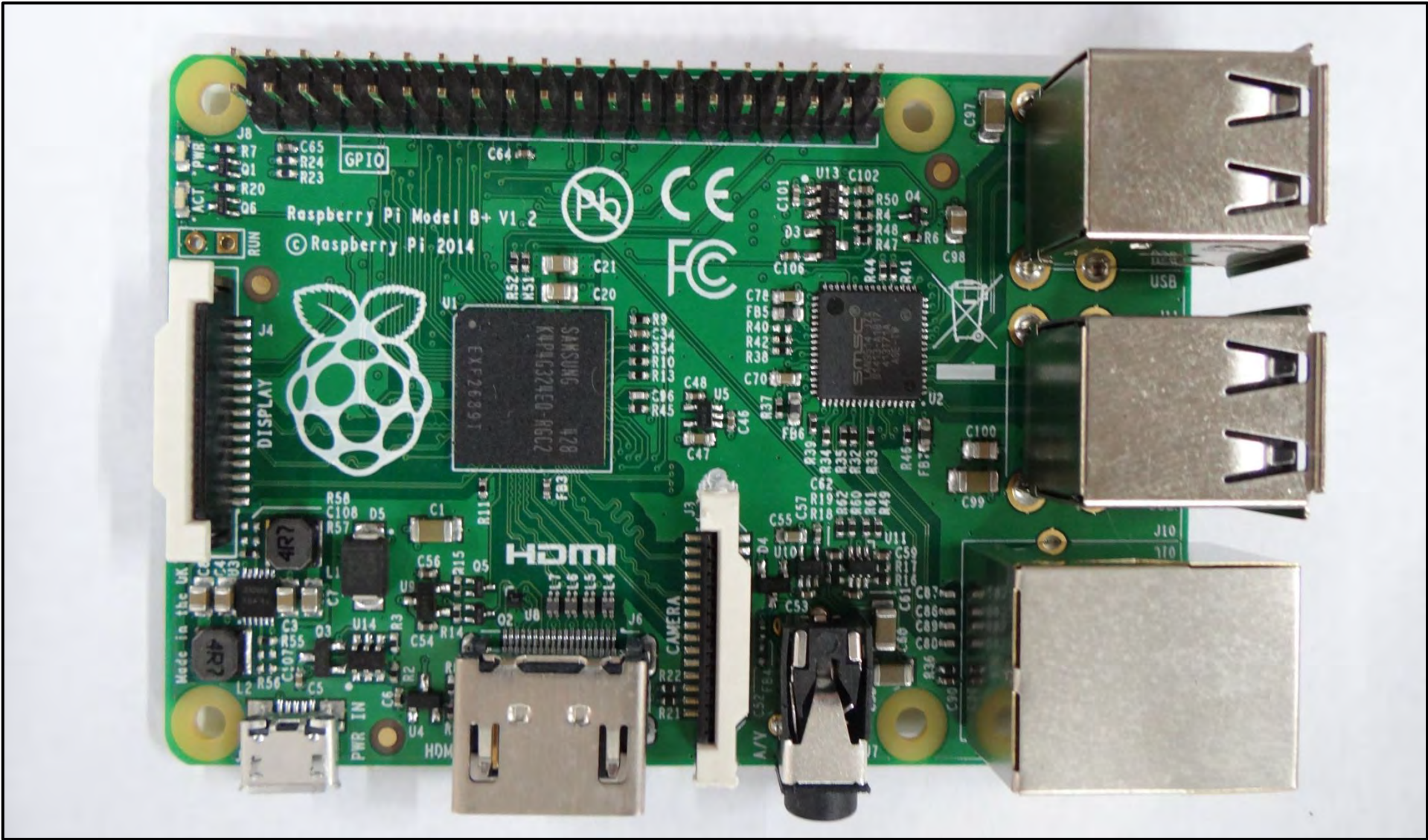
DSP Board bottom side



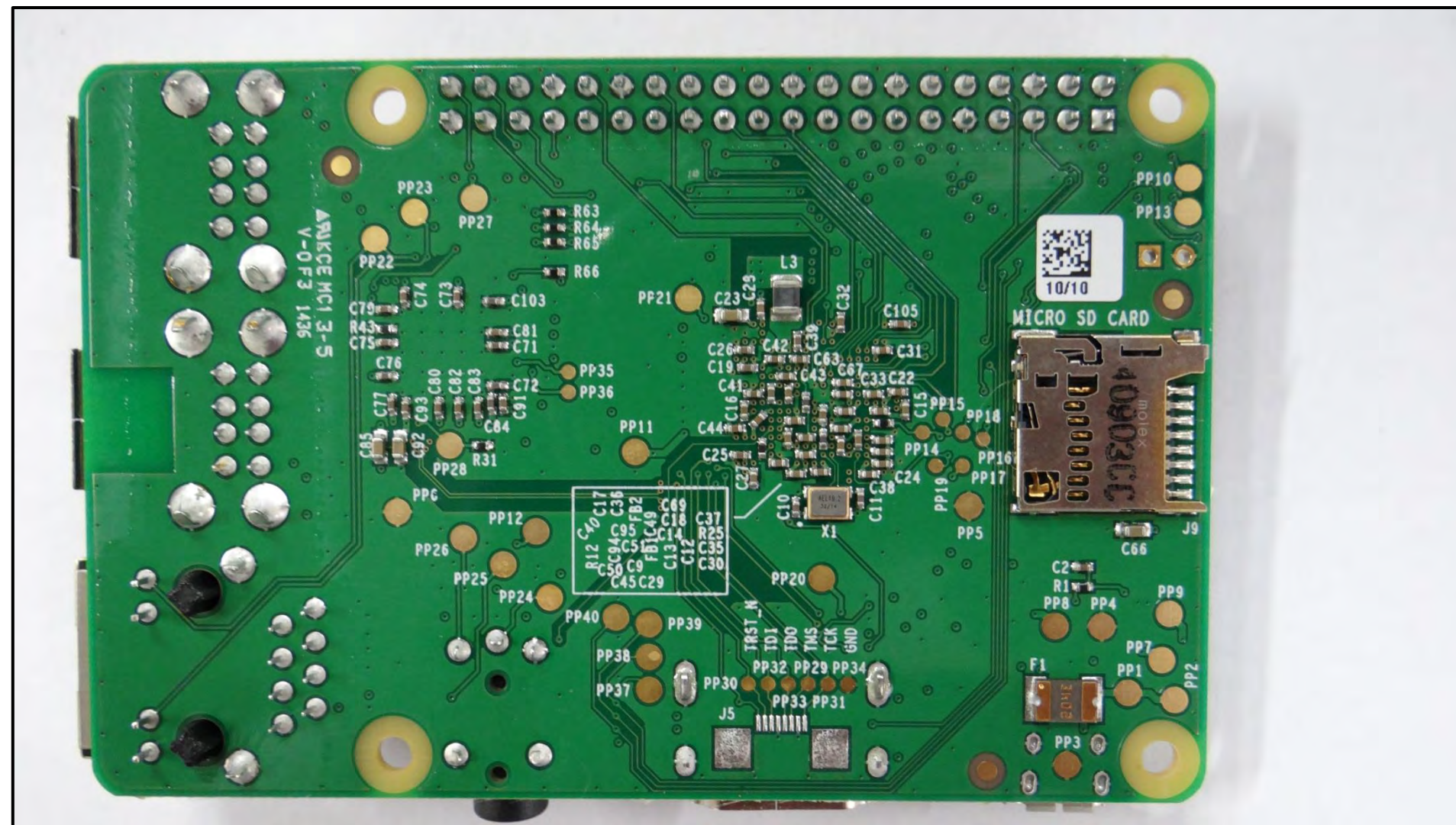
Reed Switch Board bottom side



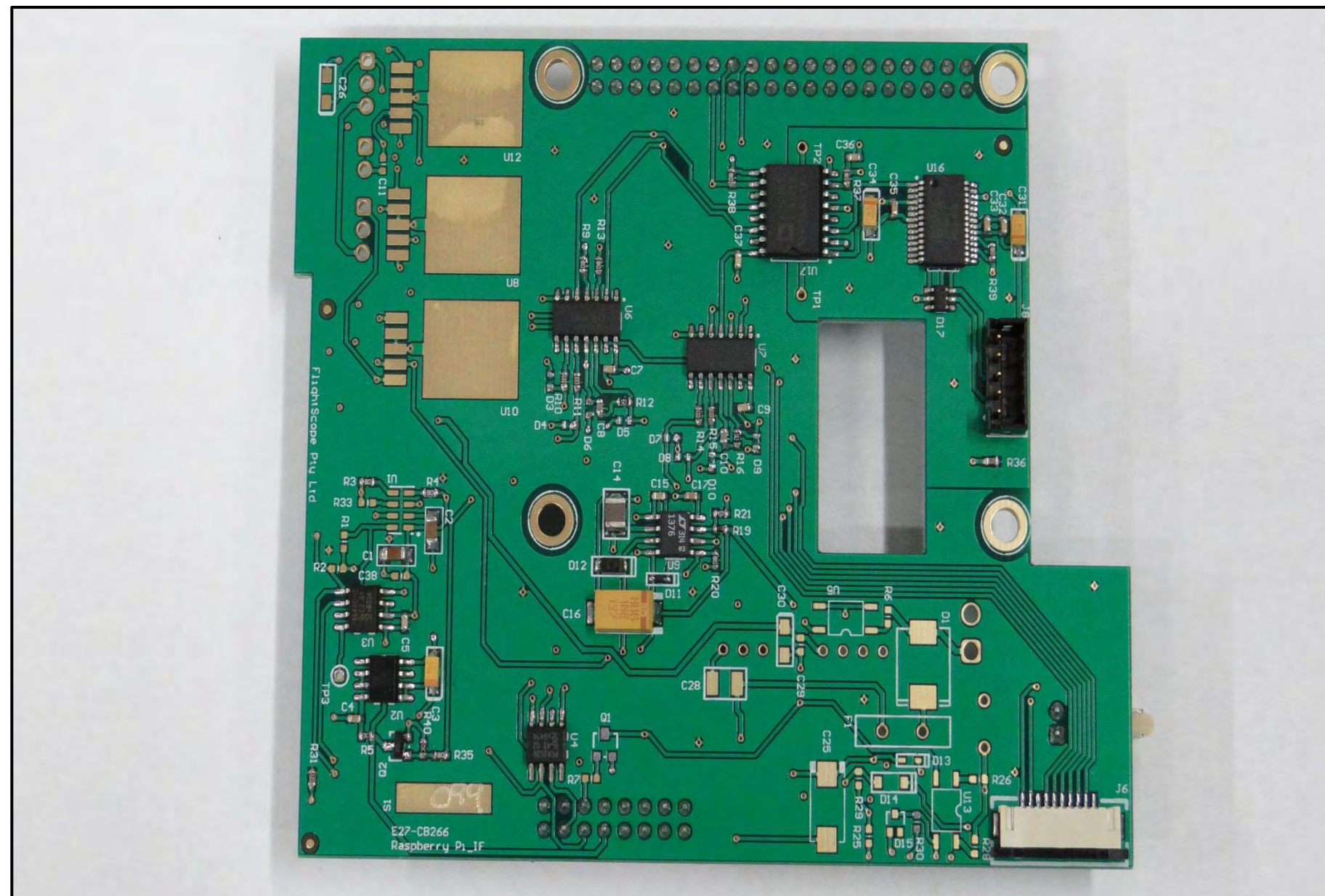
Reed Switch Board component side



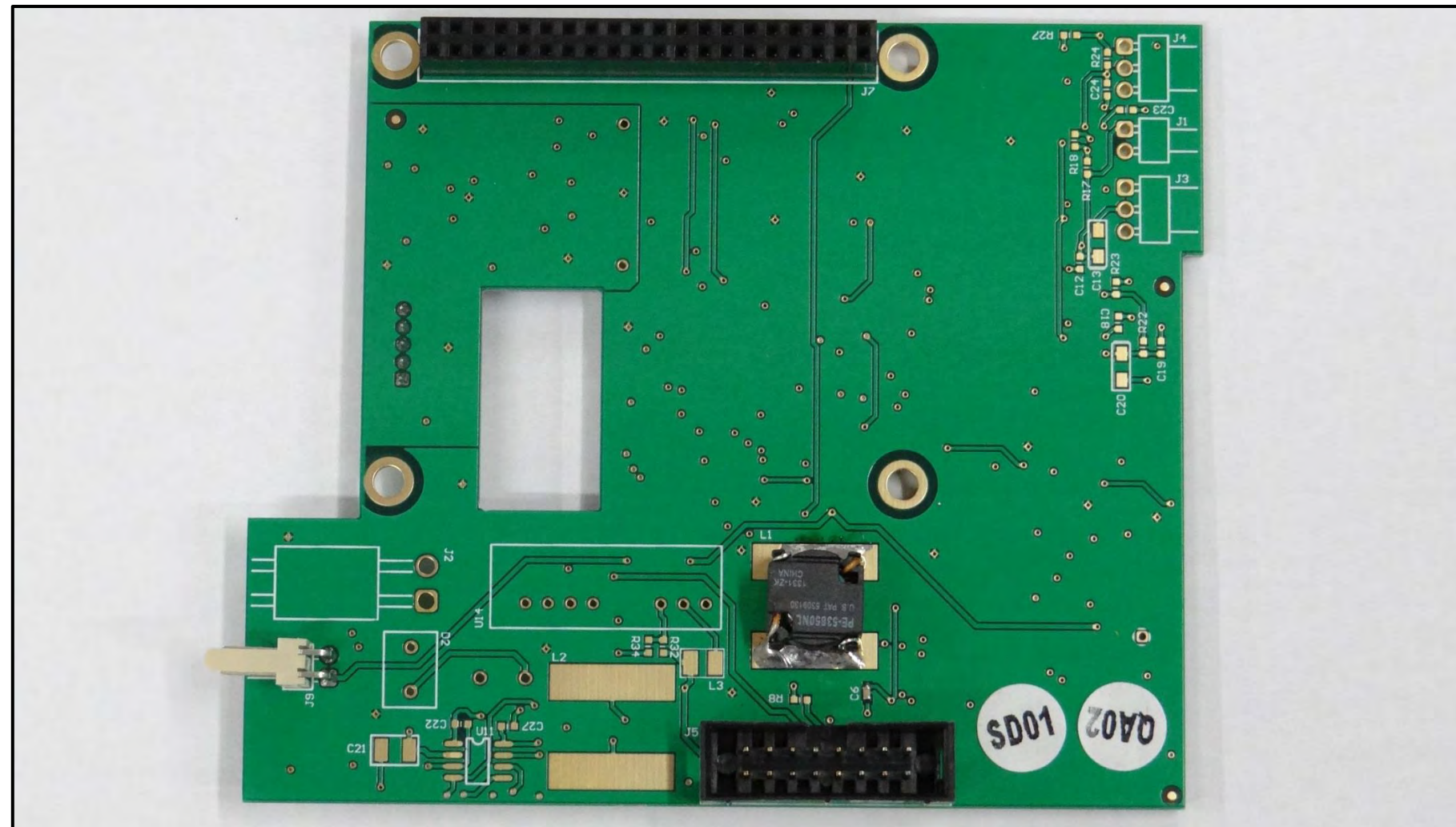
Raspberry Pi board
component side



Raspberry Pi board
bottom side



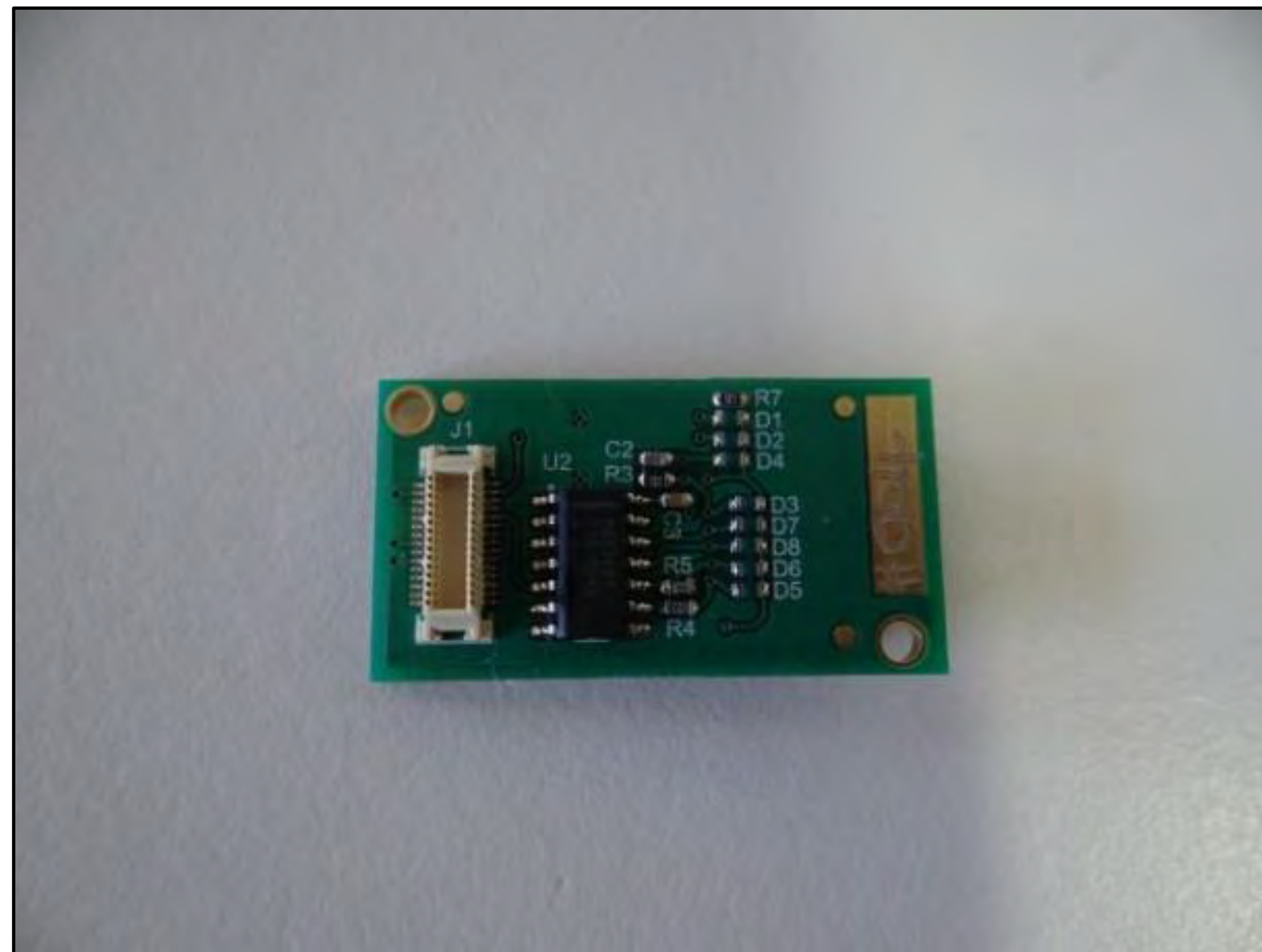
Raspberry Pi IF board Component side



Raspberry Pi IF board bottom side



RS422 Module PCB Top Side



RS422 Module PCB Bottom Side