

THIS PAGE IS TO BE REMOVED ON PRINT VERSION

PART NUMBER: E19-JZ246-ISS1.4

PAGE SIZE: 115 x 75mm

TYPE: Fold Out Leaflet

PAPER: Gallerie Coated Silk - 200gsm

PRINT: CMYK

SIDE A:

Front Cover

Operating FS mode

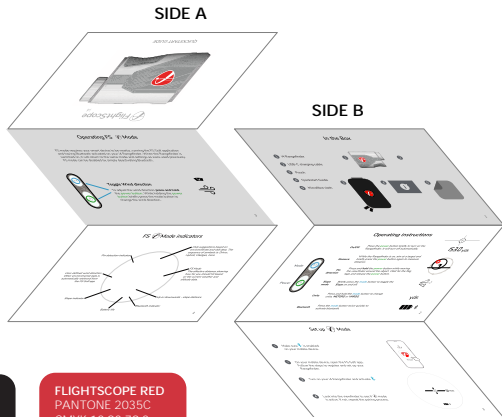
FS mode indicators

SIDE B:

In the Box

Operating instructions

Set up FS mode



WHITE

GRAYSCALE 0%

CMYK 0 0 0 0

RGB 255 255 255

HEX #FFFFFF

BLACK

GRAYSCALE 100%

CMYK 0 0 0 100

RGB 0 0 0

HEX #000000

FLIGHTSCOPE RED

PANTONE 2035C

CMYK 13 93 79 3

RGB 214 0 28

HEX #D6001C



i4



QUICKSTART GUIDE

In the Box

- 1 i4 Rangefinder
- 2 USB-C charging cable
- 3 Pouch
- 4 Quickstart guide
- 5 Microfiber cloth



This equipment has been tested and found to comply with the limits for a Class B digital device, pursuant to Part 15 of the FCC Rules. These limits are designed to provide reasonable protection against harmful interference in a residential installation. This equipment generates and can radiate radio frequency energy and, if not installed and used in accordance with the instructions, may cause harmful interference to radio communications. However, there is no guarantee that interference will not occur in a particular installation. If this equipment does cause harmful interference to radio or television reception, which can be determined by turning the equipment off and on, the user is encouraged to try to correct the interference by one of the following measures:

- Reorient or relocate the receiving antenna.
- Increase the separation between the equipment and receiver.
- Connect the equipment into an outlet on a circuit different from that to which the receiver is connected.
- Consult the dealer or an experienced radio/TV technician for help.

FCC STATEMENT

1. This device complies with Part 15 of the FCC Rules. Operation is subject to the following two conditions:

(1) This device may not cause harmful interference.

(2) This device must accept any interference received, including interference that may cause undesired operation.

2. Any changes or modifications not expressly approved by the party responsible for compliance could void the user's authority to operate the equipment.

NOTE: This equipment has been tested and found to comply with the limits for a Class B digital device, pursuant to Part 15 of the FCC Rules. These limits are designed to provide reasonable protection against harmful interference in a residential installation.

FCC - RF warning statement:

The device has been evaluated to meet general RF exposure requirements.

The device can be used in portable exposure conditions without restriction.


Operating instructions

Mode




Power


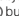
On/Off

Press the  button briefly to turn on the Rangefinder. It will turn off automatically.

Measure

While the Rangefinder is on, aim at a target and briefly press the  button again to measure distance.

Pin detection

Press and hold the  button while moving the viewfinder around the object. Wait for the flag logo and release the  button.

Slope mode

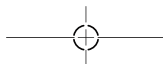
Briefly press the **M** button to toggle the Slope mode on and off.

Units

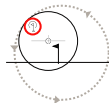
Press and hold the **M** button to change units, METERS or YARDS.

Bluetooth

Press and hold the  button while short pressing the **M** button to toggle Bluetooth on / off.




153.0 yds

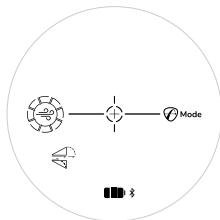


yds



Set up Mode

- 1 Make sure Bluetooth is enabled on your mobile device.
- 2 On your mobile device, open the FS Golf app. Follow the steps to register and set up your Rangefinder.
- 3 Turn on your i4 Rangefinder and activate Bluetooth.
- 4 Look into the viewfinder to see if  mode is active. If not, repeat the pairing process.



Operating Mode

FS mode requires your mobile device to be nearby, running the FS Golf application and having Bluetooth activated on your i4 Rangefinder. When the Rangefinder is switched on, it will return to the same mode and settings as were used previously. FS mode - at all times - includes slope mode as a permanent feature. To use non-slope mode, simply deactivate Bluetooth.

Wind on/off and toggle wind direction



To turn the wind function on, look into the viewfinder and briefly press the **M** button. Now the wind icon will display with a default set direction.

To adjust the wind direction, continue short pressing the **M** button until the desired wind direction is selected, or until the wind icon turns off.



Mode indicators

