

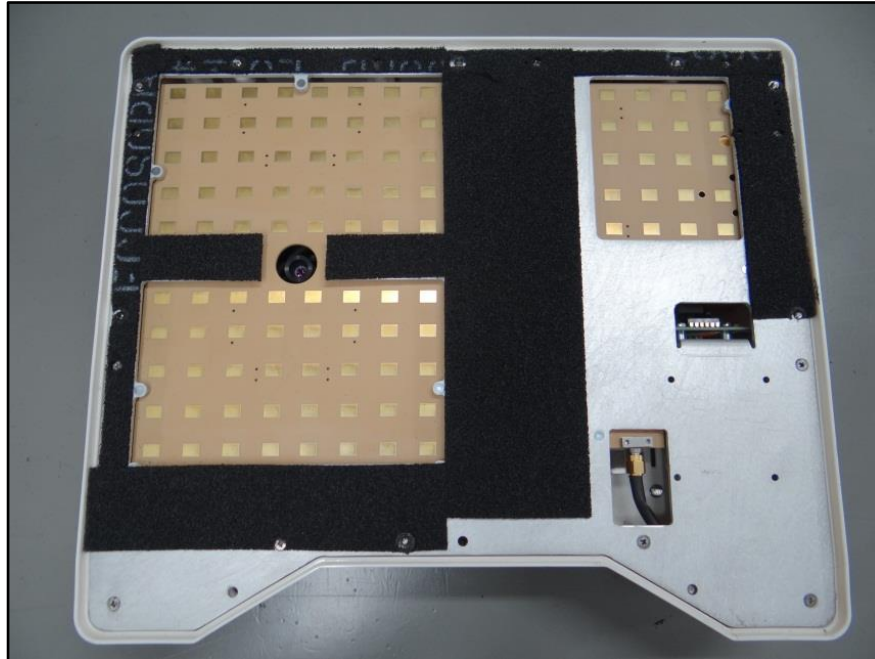
Rhein Tech Laboratories, Inc.
360 Herndon Parkway
Suite 1400
Herndon, VA 20170
<http://www.rheintech.com>

Client: FlightScope (Pty) Ltd
Model: Strike
Standard: FCC 15.245
FCC ID: QXP-32482
Report #: 2015225

Appendix J: Internal Photographs

Please refer to the following pages.

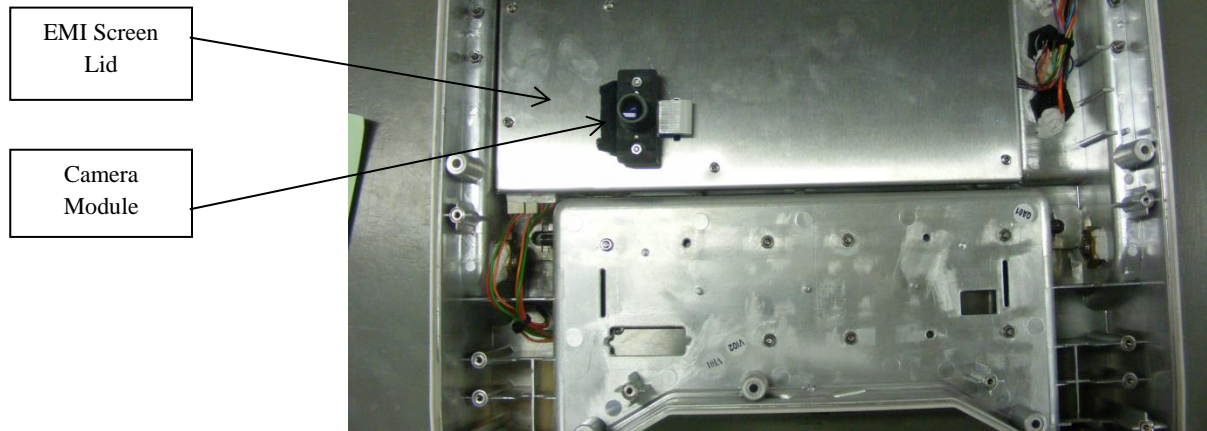
Equipment Assemblies - INTERNAL



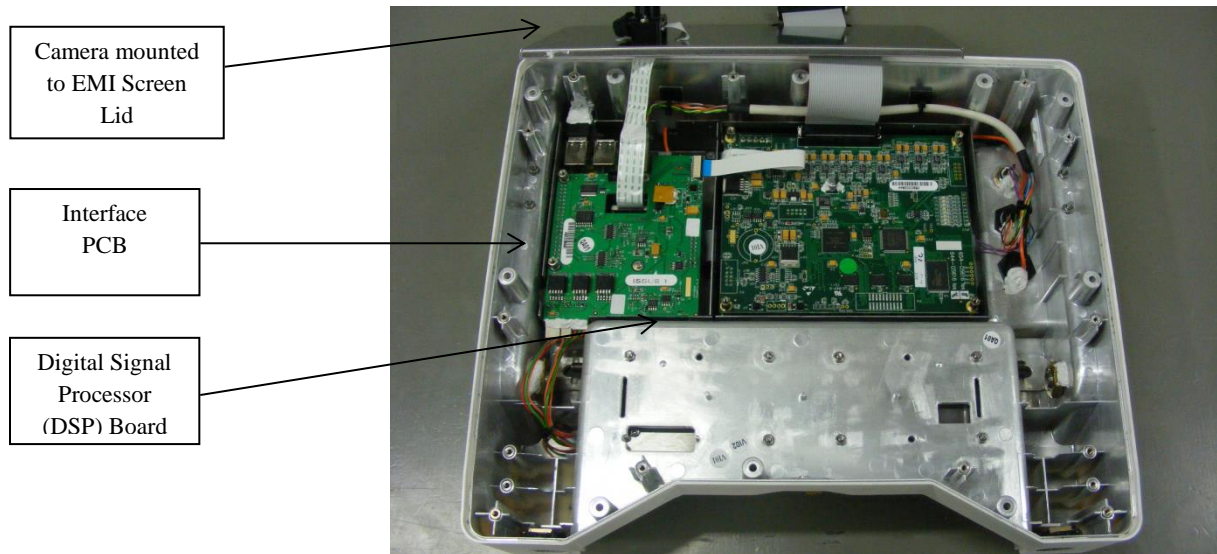
Front Equipment View with Lid removed



Rear Equipment View with cover removed



Rear Inside Assembly with Camera and EMI screen



Rear Inside Assembly with EMI screen lid removed

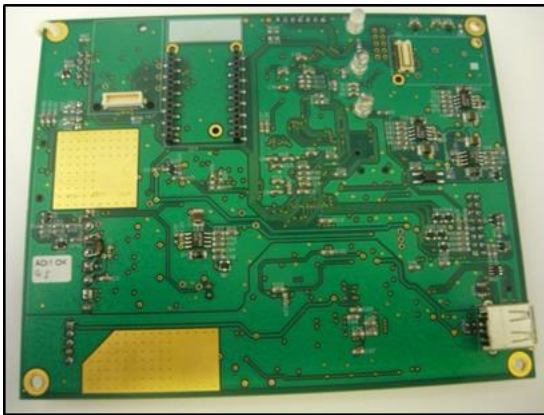
Printed Circuit Board Assemblies



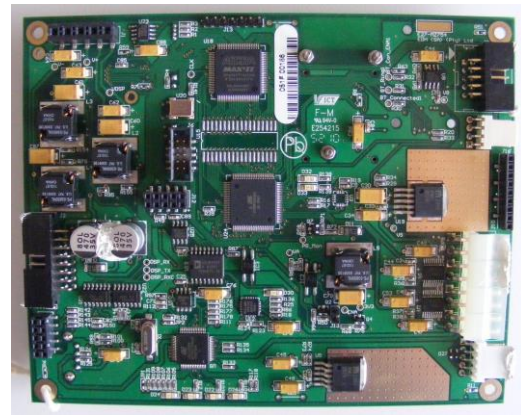
DSP PCB (bottom)



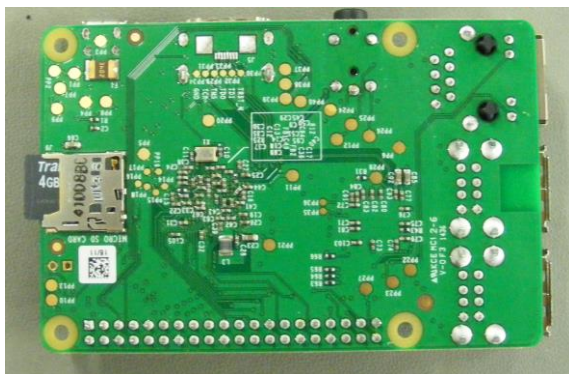
DSP PCB (top)



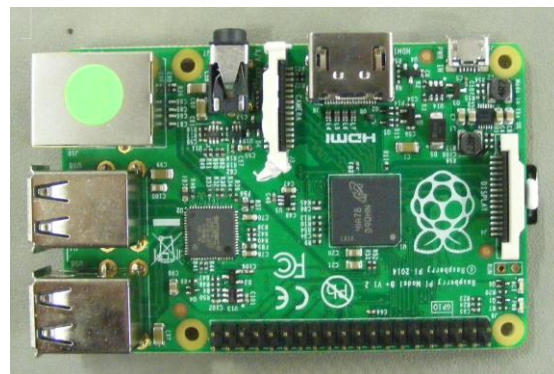
Accessory PCB (bottom)



Accessory PCB (top)



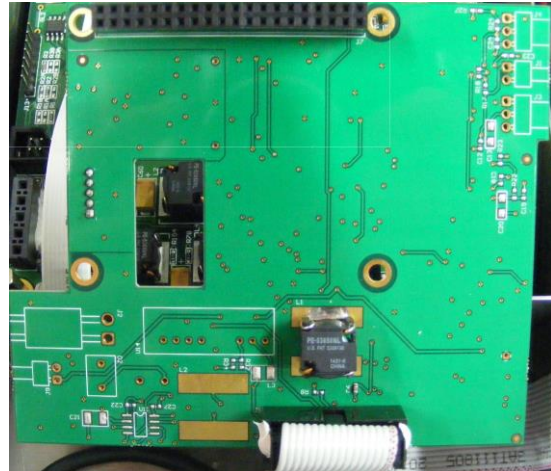
ARM Processor (bottom)



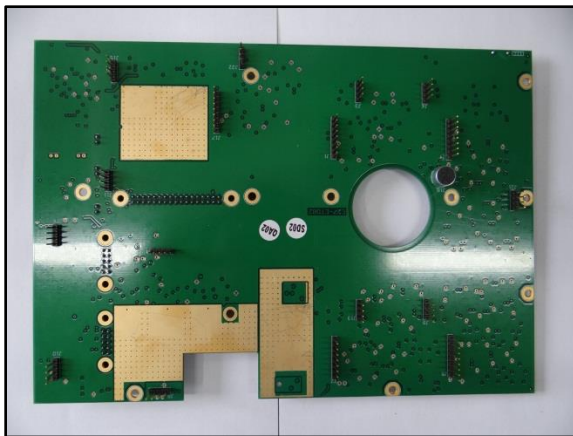
ARM Processor (Top)



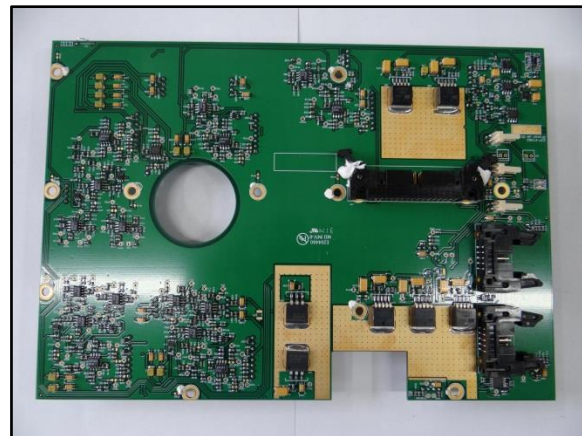
Interface PCB (top)



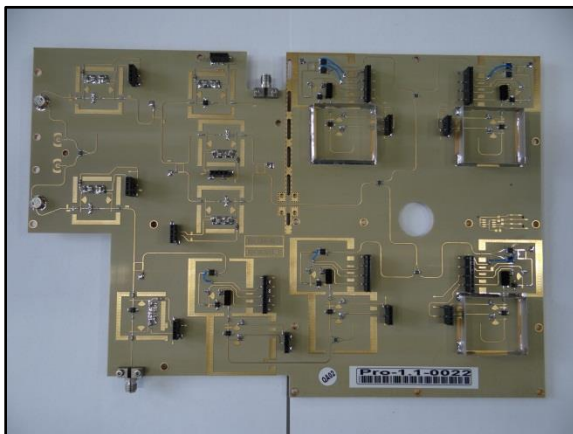
Interface PCB (bottom)



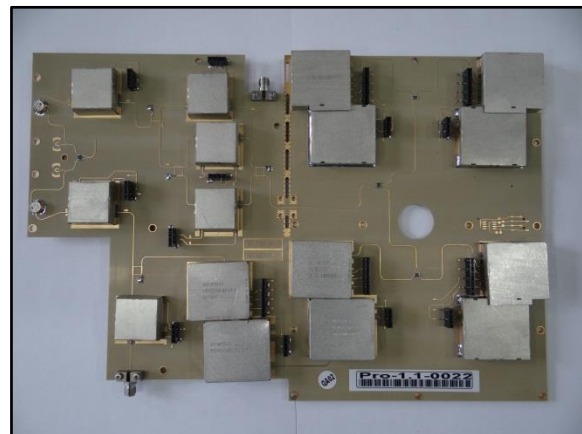
DC & IF PCB (Bottom)



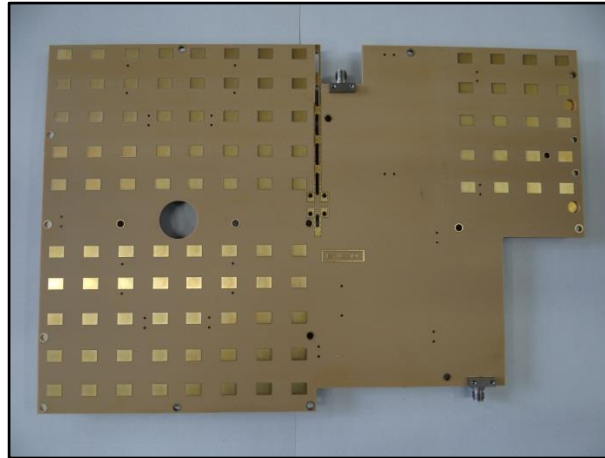
DC & IF PCB (Top)



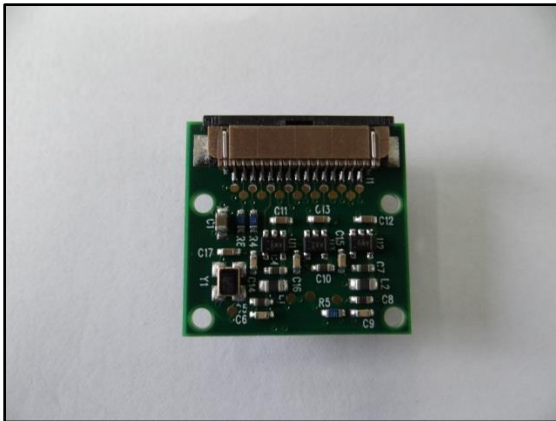
RF PCB (Bottom) with screens removed



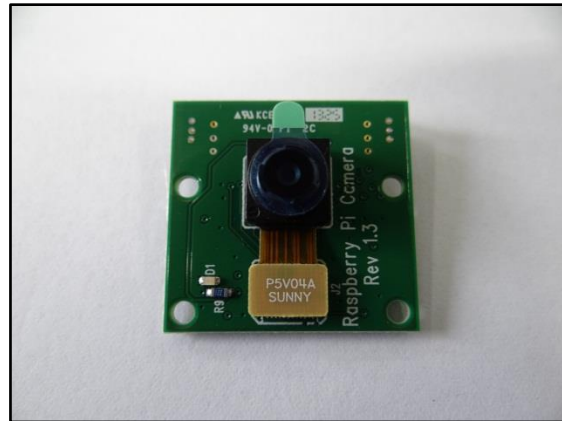
RF PCB (Bottom) with screens fitted



RF PCB (Top)



Camera Module (Bottom)



Camera Module (Top)

Glossary and Abbreviations

ARM Advanced RISC Machine

DC&IF Direct current and intermediate frequency

DSP Digital signal processor

EMI Electromagnetic interference

PCB Printed circuit board

RF Radio frequency