



**TEST REPORT OF A 2.4/5 GHZ IEEE 802.11a/g WLAN
CARDBUS CARD, BRAND AGERE, MODEL 1106, IN
CONFORMITY WITH FEDERAL REGULATED SAR
(SPECIFIC ABSORPTION RATE) REQUIREMENTS IN
THE USA AND CANADA.**

FCC listed : 90828
Industry Canada : IC3501
VCCI registered : R-1518, C-1598

TNO Electronic Products & Services (EPS) B.V.
P.O. Box 15
9822 ZG Niekerk (NL)
Smidshornerweg 18
9822 TL Niekerk (NL)

Telephone: +31 594 505005
Telefax: +31 594 504804

E-mail: info@eps.tno.nl
Web: www.eps.tno.nl



Test specification(s): FCC/CA SAR requirements
Description of EUT: 2.4/5 GHz IEEE 802.11g/a WLAN Cardbus card
Manufacturer: Agere Systems Nederland B.V.
Brand mark: Agere
Model: 1106
FCC ID: IMR1106CB





Description of test item

Test item : 2.4/5 GHz IEEE 802.11g/a WLAN Cardbus card
Manufacturer : Agere Systems Nederland B.V.
Brand : Agere
Model : 1106
Serial numbers : 04NG12910086
Revision : n.a.
Receipt number : 4
Receipt date : February 12, 2004

Applicant information

Applicant's representative : Mr. A. Visee
Company : Agere Systems Nederland B.V.
Address : Zadelstede 1-10
Postal code : 3431 JZ
City : Nieuwegein
PO-box : 755
Postal code : 3430 AT
City : Nieuwegein
Country : The Netherlands
Telephone number : +31 30 609 7534
Telefax number : +31 30 609 7556

Test(s) performed

Location : Niekerk
Test(s) started : June 15, 2004
Test(s) completed : June 24, 2004
Purpose of test(s) : To verify compliance with Federal regulated SAR requirements in the USA and Canada
Test specification(s) : IEEE C95.1-1991, FCC OET Bulletin 65 (Supplement C), Industry Canada RSS-102 (Issue 1)
Test engineer : J. Schuurmans, B.Sc.E.E. 
Project leader : H.J. Pieters 
Report written by : J. Schuurmans, B.Sc.E.E. 
Report approved by : P. de Beer 
Report date : October 5, 2004

This report is in conformity with NEN-EN-ISO/IEC 17025: 2000.

This report shall not be reproduced, except in full, without the written permission of TNO Electronic Products & Services (EPS) B.V.
The test results relate only to the item(s) tested.



Test specification(s): FCC/CA SAR requirements
Description of EUT: 2.4/5 GHz IEEE 802.11g/a WLAN Cardbus card
Manufacturer: Agere Systems Nederland B.V.
Brand mark: Agere
Model: 1106
FCC ID: IMR1106CB

Table of contents

| | | |
|-------|--|----|
| 1 | General..... | 6 |
| 1.1 | Purpose of tests..... | 6 |
| 1.2 | Applied standards/publications..... | 6 |
| 1.3 | References..... | 6 |
| 2 | Summary and conclusion..... | 7 |
| 2.1 | Exposure category..... | 7 |
| 2.2 | Summary of results..... | 7 |
| 2.3 | Compliance..... | 7 |
| 3 | Identification of Equipment Under Test (EUT)..... | 8 |
| 3.1 | Description of EUT..... | 8 |
| 3.2 | EUT test operating configurations..... | 8 |
| 3.3 | Additional operating configurations..... | 8 |
| 4 | Test conditions..... | 9 |
| 4.1 | Environmental conditions..... | 9 |
| 4.2 | System validation check at 2450 MHz..... | 9 |
| 4.2.1 | 2450 MHz validation parameters..... | 12 |
| 4.3 | System validation check at 5 GHz..... | 13 |
| 4.3.1 | 5 GHz validation parameters..... | 14 |
| 4.4 | Measured maximum output power of EUT..... | 15 |
| 4.4.1 | Measured average power at 2.4 GHz..... | 15 |
| 4.4.2 | Measured average power at 5 GHz..... | 16 |
| 4.5 | Tissue simulating liquid dielectric parameters..... | 17 |
| 4.5.1 | Mixing procedures and recipe..... | 17 |
| 4.5.2 | Dielectric parameters for 2.4 GHz, body tissue..... | 18 |
| 4.5.3 | Dielectric parameters for 2.4 GHz, head tissue..... | 19 |
| 4.5.4 | Dielectric parameters for 5 GHz body tissue..... | 20 |
| 4.5.5 | Dielectric parameters for 5 GHz, head tissue..... | 21 |
| 4.5.6 | Tissue simulating liquid temperature requirements..... | 22 |
| 5 | Photographs of EUT in host..... | 23 |
| 5.1 | Host IBM..... | 23 |
| 5.2 | Host COMPAQ..... | 24 |
| 5.3 | Host ACER..... | 25 |
| 6 | Identification of EUT-Phantom positions..... | 26 |
| 6.1 | Portable device operating near the body..... | 26 |
| 6.1.1 | Position perpendicular..... | 26 |
| 6.1.2 | Position lapheld..... | 27 |
| 7 | Test results..... | 28 |
| 7.1 | Test methodology..... | 28 |
| 7.2 | Measurement results..... | 29 |
| 7.3 | Step size and scan information..... | 30 |



Test specification(s): FCC/CA SAR requirements
Description of EUT: 2.4/5 GHz IEEE 802.11g/a WLAN Cardbus card
Manufacturer: Agere Systems Nederland B.V.
Brand mark: Agere
Model: 1106
FCC ID: IMR1106CB

| | | |
|--------|--|----|
| 8 | Plots of measurement data..... | 31 |
| 8.1.1 | System validation at 2450 MHz..... | 31 |
| 8.1.2 | System validation at 5360 MHz..... | 34 |
| 8.1.3 | System validation at 5360 MHz..... | 35 |
| 8.1.4 | System validation at 5360 MHz..... | 36 |
| 8.1.5 | System validation at 5360 MHz..... | 37 |
| 8.1.6 | System validation at 5740 MHz..... | 38 |
| 8.1.7 | System validation at 5740 MHz..... | 39 |
| 8.1.8 | System validation at 5740 MHz..... | 40 |
| 8.2 | Host: ACER..... | 41 |
| 8.2.1 | Host ACER, Lapheld, channel 1..... | 41 |
| 8.2.2 | Host ACER, Lapheld, channel 6..... | 42 |
| 8.2.3 | Host ACER, Lapheld, channel 11..... | 43 |
| 8.2.4 | Host ACER, Lapheld, channel 36..... | 44 |
| 8.2.5 | Host ACER, Lapheld, channel 48..... | 45 |
| 8.2.6 | Host ACER, Lapheld, channel 52..... | 46 |
| 8.2.7 | Host ACER, Lapheld, channel 64..... | 47 |
| 8.2.8 | Host ACER, Lapheld, channel 165..... | 48 |
| 8.2.9 | Host ACER, Perpendicular + 10 mm, channel 6..... | 49 |
| 8.2.10 | Host ACER, Perpendicular + 10 mm, channel 52..... | 50 |
| 8.2.11 | Host ACER, Perpendicular + 10 mm, channel 165..... | 51 |
| 8.3 | Host: IBM..... | 52 |
| 8.3.1 | Host IBM, Lapheld, channel 1..... | 52 |
| 8.3.2 | Host IBM, Lapheld, channel 6..... | 53 |
| 8.3.3 | Host IBM, Lapheld, channel 11..... | 54 |
| 8.3.4 | Host IBM, Lapheld, channel 52..... | 55 |
| 8.3.5 | Host IBM, Lapheld, channel 165..... | 56 |
| 8.3.6 | Host IBM, Perpendicular + 10 mm, channel 6..... | 57 |
| 8.3.7 | Host IBM, Perpendicular + 10 mm, channel 52..... | 58 |
| 8.3.8 | Host IBM, Perpendicular + 10 mm, channel 165..... | 59 |
| 8.4 | Host: COMPAQ..... | 60 |
| 8.4.1 | Host COMPAQ, Lapheld, channel 1..... | 60 |
| 8.4.2 | Host COMPAQ, Lapheld, channel 6..... | 61 |
| 8.4.3 | Host COMPAQ, Lapheld, channel 11..... | 62 |
| 8.4.4 | Host COMPAQ, Lapheld, channel 36..... | 63 |
| 8.4.5 | Host COMPAQ, Lapheld, channel 48..... | 64 |
| 8.4.6 | Host COMPAQ, Lapheld, channel 52..... | 65 |
| 8.4.7 | Host COMPAQ, Lapheld, channel 64..... | 66 |
| 8.4.8 | Host COMPAQ, Lapheld, channel 165..... | 67 |
| 8.4.9 | Host COMPAQ, Perpendicular + 10 mm, channel 6..... | 68 |
| 8.4.10 | Host COMPAQ, Perpendicular + 10 mm, channel 52..... | 69 |
| 8.4.11 | Host COMPAQ, Perpendicular + 10 mm, channel 165..... | 70 |
| 8.5 | Hotspot identification..... | 71 |



Test specification(s): FCC/CA SAR requirements
Description of EUT: 2.4/5 GHz IEEE 802.11g/a WLAN Cardbus card
Manufacturer: Agere Systems Nederland B.V.
Brand mark: Agere
Model: 1106
FCC ID: IMR1106CB

| | | |
|--------|---|----|
| 9 | Description of test configuration..... | 72 |
| 9.1 | SAR measurement system..... | 72 |
| 9.1.1 | Robot system description..... | 72 |
| 9.1.2 | Probe description..... | 73 |
| 9.1.3 | Amplifier description..... | 73 |
| 9.1.4 | Phantom description..... | 73 |
| 9.2 | Measurement procedure..... | 73 |
| 9.2.1 | SARA2 interpolation and extrapolation schemes..... | 74 |
| 9.2.2 | Interpolation of 2D area scan..... | 74 |
| 9.2.3 | Extrapolation of 3D scan..... | 74 |
| 9.2.4 | Interpolation of 3D scan and volume averaging..... | 74 |
| 10 | Additional information supplementary to the test report..... | 76 |
| 10.1 | Probe information..... | 76 |
| 10.2 | SAR system check..... | 76 |
| 10.3 | 5.8 GHz system check..... | 77 |
| 10.3.1 | Introduction..... | 77 |
| 10.3.2 | Validation results using WR187 waveguide..... | 78 |
| 10.3.3 | An alternative open-ended waveguide geometry..... | 79 |
| 10.4 | Dielectric property measurement of tissue-simulant liquids for SAR testing..... | 80 |
| 10.4.1 | Introduction..... | 80 |
| 10.4.2 | TEM-cell construction..... | 80 |
| 10.4.3 | Calculation of dielectric properties from VNA measurements..... | 80 |
| 10.5 | Measurement uncertainty..... | 82 |
| 10.5.1 | Introduction..... | 82 |
| 10.5.2 | Uncertainty calculated for IEEE1528: standard measurements (2450 MHz)..... | 83 |
| 10.5.3 | Uncertainty calculated for IEEE1528: standard measurements (5800 MHz)..... | 84 |
| 10.5.4 | Uncertainty calculated for IEEE1528: system performance check (2450 MHz)..... | 85 |
| 10.5.5 | Uncertainty calculated for IEEE1528: system performance check (5800 MHz)..... | 86 |
| 11 | List of utilized test equipment..... | 87 |
| 12 | Test software..... | 87 |

Annexes:

- Calibration Certificate Dosimetric E-field Probe.
- Immersible SAR probe calibration report IXP – 050 S/N 0131
- IndexSAR report no. IXS-0223, Compensating for the finite size of SAR probes used in electric field gradients



Test specification(s): FCC/CA SAR requirements
Description of EUT: 2.4/5 GHz IEEE 802.11g/a WLAN Cardbus card
Manufacturer: Agere Systems Nederland B.V.
Brand mark: Agere
Model: 1106
FCC ID: IMR1106CB

1 General.

1.1 Purpose of tests.

Tests were conducted to verify compliance with Federal regulated SAR requirements in the USA and Canada.

1.2 Applied standards/publications.

The Equipment Under Test (EUT) was tested in conformity with the described test method(s) in the following standards and/or publications:

- IEEE Std C95.1-1999 edition: IEEE Standard for Safety Levels with Respect to Human Exposure to Radio Frequency Electromagnetic Fields, 3kHz to 300GHz
- FCC OET Bulletin 65 (Supplement C) edition 01-01: Evaluating Compliance with FCC Guidelines for Human Exposure to radio Frequency Fields. Additional information for evaluating Compliance of Mobile and Portable Devices with FCC limits for Human Exposure to Radiofrequency Emissions.
- Industry Canada RSS-102 (Issue 1).

1.3 References.

The methods and procedures applicable to measurements as performed and indicated in this test report are also described in detail in the following reference documents:

| Publications | Year | Title |
|------------------------------------|------|--|
| IEEE Std. 1528 | 2003 | Recommended Practice for Determining the Peak Spatial-Average Specific Absorption rate (SAR) in the Human Head from Wireless Communications Devices: Measurement Techniques. |
| FCC OET Bulletin 65, Edition 97-01 | 1997 | Evaluating Compliance with FCC Guidelines for Human Exposure to radio Frequency Fields |
| ANSI/IEEE C95.3 | 2002 | IEEE Recommended Practice for the Measurement and Computations of Radio Frequency Electromagnetic Fields With Respect to Human Exposure to Such Fields, 100kHz-300GHz |



Test specification(s): FCC/CA SAR requirements
Description of EUT: 2.4/5 GHz IEEE 802.11g/a WLAN Cardbus card
Manufacturer: Agere Systems Nederland B.V.
Brand mark: Agere
Model: 1106
FCC ID: IMR1106CB

2 Summary and conclusion.

2.1 Exposure category.

The EUT is a portable device, intended for use near the body.

According to the characteristics of the EUT and the typical application and usage in accordance with the relevant product specifications of the manufacturer, the EUT is identified to fall within the scope of the exposure category:

General population/Uncontrolled exposure.

2.2 Summary of results.

In the 2.4 GHz frequency range (2412 - 2472 MHz) the maximum peak spatial-average SAR measured was **1.502 W/kg**, averaged over 1g with the EUT transmitting on 2437 MHz (channel 6) at a power level of 21.4 dBm (conducted average output power including 3 dBi antenna gain) while the EUT was positioned in lapheld fashion.

In the 5 GHz frequency range (5150 - 5350 MHz) the maximum peak spatial-average SAR measured was **1.456 W/kg**, averaged over 1g with the EUT transmitting on 5260 MHz (channel 52) at a power level of 20.4 dBm (conducted average output power including 4 dBi antenna gain) while the EUT was positioned in a lapheld fashion.

In the 5 GHz frequency range (5725 - 5850 MHz) the maximum peak spatial-average SAR measured was **0.422 W/kg**, averaged over 1g with the EUT transmitting on 5825 MHz (channel 165) at a power level of 17.2 dBm (conducted average output power including 4 dBi antenna gain) while the EUT was positioned in a lapheld fashion.

2.3 Compliance.

The equipment was found to be compliant with requirements of standards as indicated in the table below:

| Exposure category and SAR limits | Test requirements | Compliance (Yes/No) |
|--|--|---------------------|
| General population/Uncontrolled exposure Limit value for this category as per 47 CFR 1.1093 (d)(2): Spatial Peak SAR shall not exceed 1.6 W/kg as averaged over 1 g of tissue | Requirements using guidelines established in IEEE C95.1-1991 | Yes/ no |
| | FCC OET Bulletin 65 (Supplement C) | Yes/ no |
| | Industry Canada RSS-102 (Issue 1). | Yes/ no |



Test specification(s): FCC/CA SAR requirements
Description of EUT: 2.4/5 GHz IEEE 802.11g/a WLAN Cardbus card
Manufacturer: Agere Systems Nederland B.V.
Brand mark: Agere
Model: 1106
FCC ID: IMR1106CB

3 Identification of Equipment Under Test (EUT).

The following is the information as provided by the applicant.

3.1 Description of EUT.

| Description | Model number | Serial number | FCC ID | Cable descriptions |
|--|----------------|---------------------|-----------|-------------------------------|
| 2.4/5 GHz IEEE 802.11g/a WLAN Cardbus card | 1106 | 04NG22910025 | IMR1106CB | None. |
| Laptop Compaq | N610C | CNU3520X3V | DoC | DC power cord |
| AC Adaptor | PA-1650-02 | 3Y09478704 | DoC | AC power cord / DC power cord |
| Laptop Acer | Travelmate 350 | 9145H018S510800AC0M | DoC | DC power cord |
| AC Adaptor Acer 19VDC 3.2A | PA-1600-02 | 1229852CA | DoC | DC power cord / AC power cord |
| P/S2 mouse Microsoft | X04-72169 | 63618-OEM 7353451-6 | DoC | Serial cable to laptop |
| Laptop IBM | 1161-250 | AA-FT4DD 00/05 | DoC | DC power cord |
| IBM DC power supply 16V – 3A | O2k6543 | 1Z0rN857D91 | DoC | DC power cord / AC power cord |

3.2 EUT test operating configurations.

- Modulation type/ operating modes : DSSS (1, 2, 5.5, 11 Mbit/s), OFDM (6, 9, 12, 18, 24, 36, 48, 54 Mbit/s), BPSK, QPSK, 16QAM, 64 QAM
- Operating frequency range : 2400 - 2483.5 MHz (13 channels)
5150 - 5350 MHz (8 channels), 5725 - 5850 MHz (5 channels)
- Maximum indicated power : 21.4 dBm average power incl antenna gain @ 2412 - 2472 MHz
20.4 dBm average power incl antenna gain @ 5180 - 5320 MHz
17.2 dBm average power incl antenna gain @ 5745 - 5825 MHz
- Duty cycle during testing : 100%
- Antenna type(s) and gain : Integral, gain +3 dBi @ 2.4 GHz, gain +4 dBi @ 5 GHz
- Power supply/ power source : See section 3.1
- Primary User Functions of EUT : -Digital Transmission System (DTS) in the frequency ranges of 2400 - 2483.5 MHz and 5725 - 5850 MHz
-Unlicensed National Information Infrastructure Device (U-NII) in the frequency range of 5150 - 5350 MHz
- EUT Accessories : See section 3.1
- Hardware/software changes applied for testing : The EUT is configured to transmit with 100% duty cycle, by using specific test software as supplied by the applicant.

3.3 Additional operating configurations.

Power and signal distribution, grounding, interconnecting cabling and physical placement of the EUT under circumstances of testing at the test system are in accordance with the typical application and usage in so far as is practicable, and is in accordance with the relevant product specifications of the manufacturer.

The configuration of the EUT and its position are fully detailed and documented in this test report.



Test specification(s): FCC/CA SAR requirements
Description of EUT: 2.4/5 GHz IEEE 802.11g/a WLAN Cardbus card
Manufacturer: Agere Systems Nederland B.V.
Brand mark: Agere
Model: 1106
FCC ID: IMR1106CB

4 Test conditions.

4.1 Environmental conditions.

| Requirement for | Specification | Actual value |
|-----------------------------|---|---|
| Ambient temperature | +18 °C to +25 °C Temperature variation shall not exceed ± 2 °C during the test | +21 °C to +23 °C |
| Ambient humidity | 20 % to 75 % | 48 % to 58 % |
| ElectroMagnetic environment | The ambient interference power shall be less than 0,012 W/kg | Below the required lower detection limit of 0,010 W/kg, checked before and after test |

4.2 System validation check at 2450 MHz.

The purpose of the system performance check (*system check*) is to verify that the system operates within its specifications at the device test frequency. The system check is to make sure that the system works correctly at the time of the compliance test.

The system check has been performed using the specified tissue-equivalent liquid and at a chosen fixed frequency that is within ± 10 % of the compliance test mid-band frequency.

The system check is performed prior to compliance tests and the result must always be within ± 10 % of the target value corresponding to the test frequency, liquid and the source used. A description of this check is given in section 10.3 of this test report.

Photographs of the 2.4 and 5 GHz check instrument setup and validation dipoles may be found on the next pages of this test report.



Test specification(s): FCC/CA SAR requirements
Description of EUT: 2.4/5 GHz IEEE 802.11g/a WLAN Cardbus card
Manufacturer: Agere Systems Nederland B.V.
Brand mark: Agere
Model: 1106
FCC ID: IMR1106CB

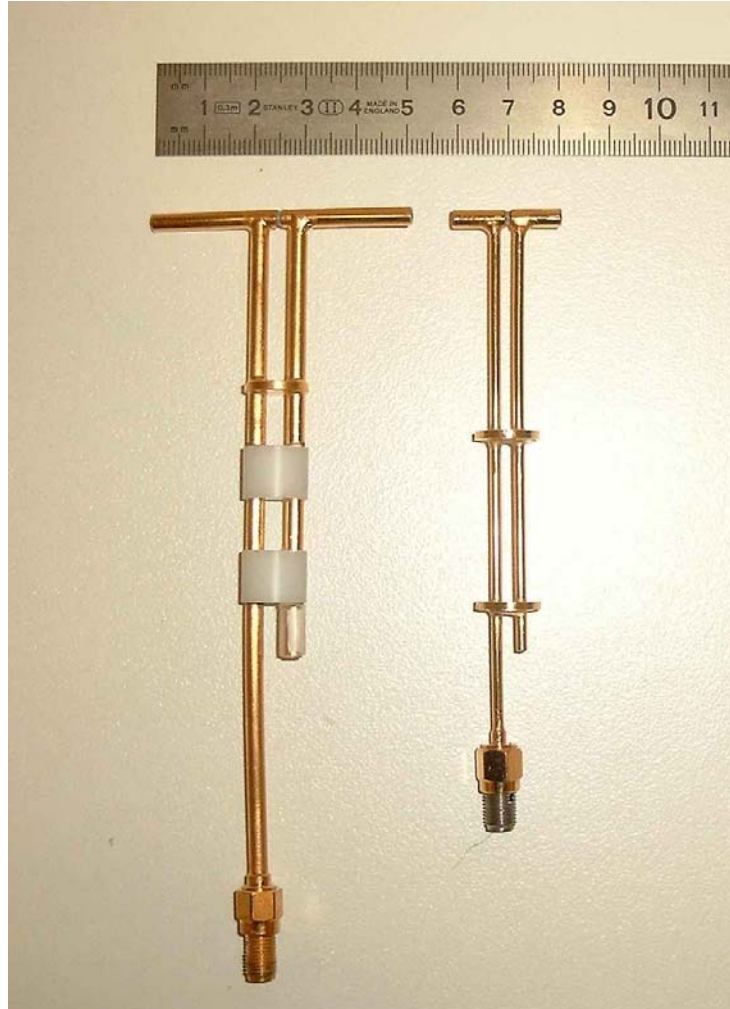


Photo 1: Validation dipoles

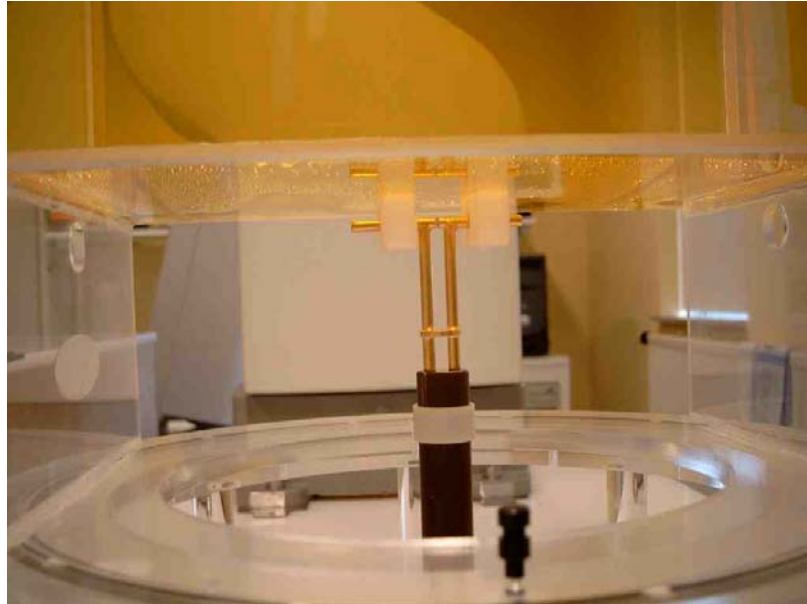


Photo 2: 2.4 GHz dipole validation



Photo 3: Instrument setup system check

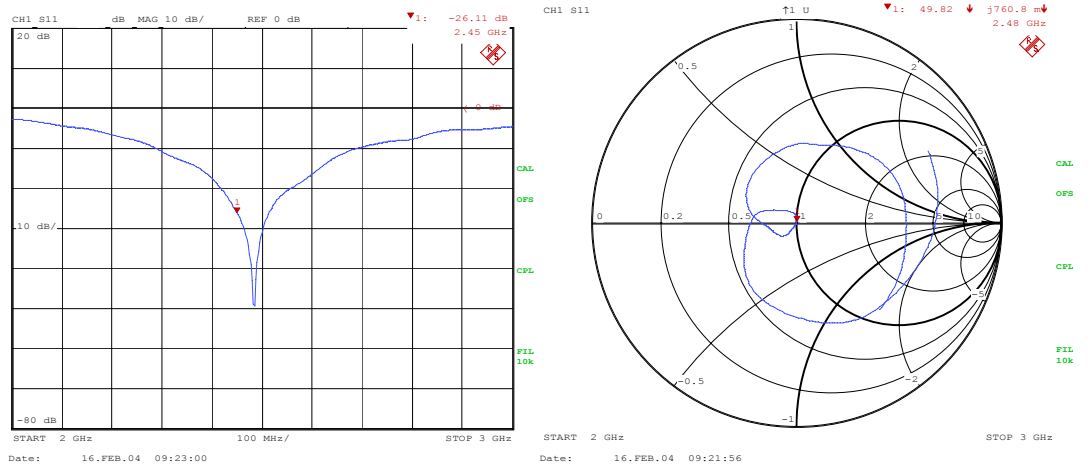


Figure 1: $|S_{11}|$ and S_{11} smith chart of the 2.4 GHz dipole placed underneath the filled phantom

The target values are 1 g or 10 g averaged SAR values, as measured on systems for which *system validation* has been performed.

4.2.1 2450 MHz validation parameters.

At 2450 MHz a system validation check was performed in accordance with chapter 8 of IEEE Std. 1528-2003. Please refer to Photo 1 for a picture of the dipole which has been used during this system validation check.

| Frequency = 2450 MHz | | Target value (W/kg) | Measured value (W/kg) | Deviation ¹ (%) |
|----------------------|------------------------------|---------------------|-----------------------|----------------------------|
| Date: June 17, 2004 | Peak Spatial-Average SAR 1g | 52.00 | 51.76 | -0.46 |
| | Peak Spatial-Average SAR 10g | 24.00 | 26.12 | +8.3 |
| Date June 18, 2004 | Peak Spatial-Average SAR 1g | 52.00 | 50.08 | -3.7 |
| | Peak Spatial-Average SAR 10g | 24.00 | 25.60 | +6.7 |
| Date June 23, 2004 | Peak Spatial-Average SAR 1g | 52.00 | 55.35 | +6.4 |
| | Peak Spatial-Average SAR 10g | 24.00 | 28.22 | +17.6 |

Detailed validation results may be found in section 8 of this test report.

¹ Deviation is calculated: $100\% * ((\text{measured value}) / (\text{reference value}) - 1)$

4.3 System validation check at 5 GHz.

During a system validation at 5800 MHz the proposed method in “*First Draft- Annex X: Frequency Extension to 3GHz-6GHz of IEEE Std. 1528-2003 recommended Practice for Determining the Peak Spatial-Average Specific Absorption Rate (SAR) in the Human Head from Wireless Communication Devices: Measurement Techniques*” February 28, 2003, was used, but the described/required value of SAR could not be obtained.

This is consistent with the experience of the manufacturer of our SAR system, IndexSar Inc. from the UK. As an alternative, the waveguide method as proposed by Ghandi was used to validate the system setup.

The results show that the results of the validation while using the waveguide method is within 10 % of the expected values. Detailed information is included in section 10.3 of this test report. A picture of the waveguide which was used during the system validation checks may be found below.

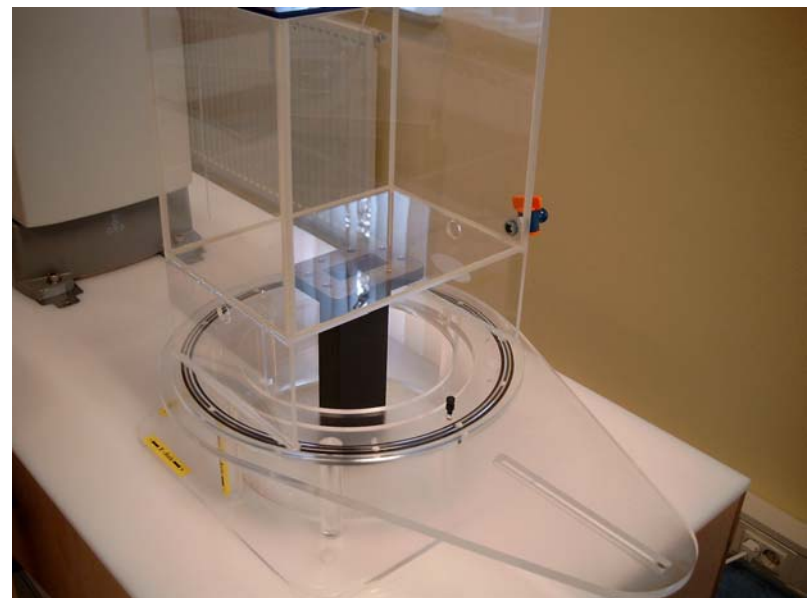
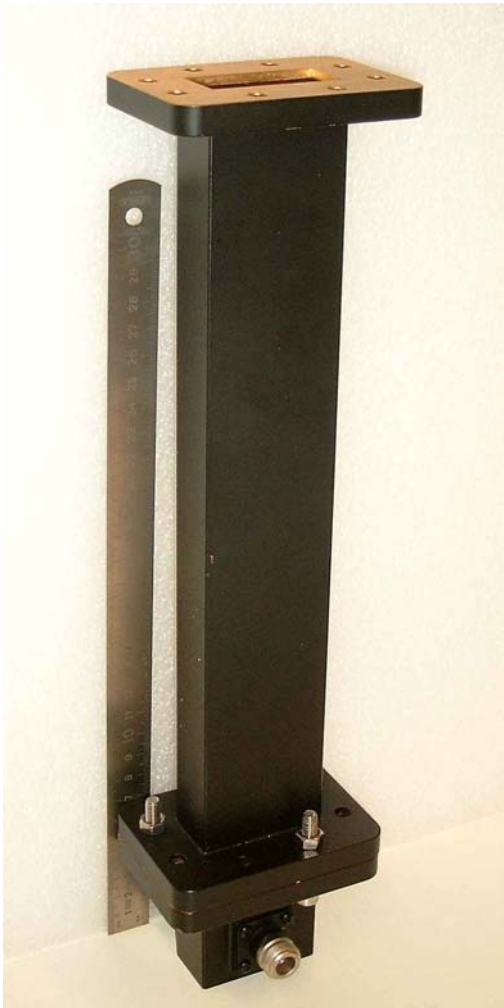


Photo 4: (above) Waveguide in position under phantom

Photo 5: (left) Waveguide



Test specification(s): FCC/CA SAR requirements
 Description of EUT: 2.4/5 GHz IEEE 802.11g/a WLAN Cardbus card
 Manufacturer: Agere Systems Nederland B.V.
 Brand mark: Agere
 Model: 1106
 FCC ID: IMR1106CB

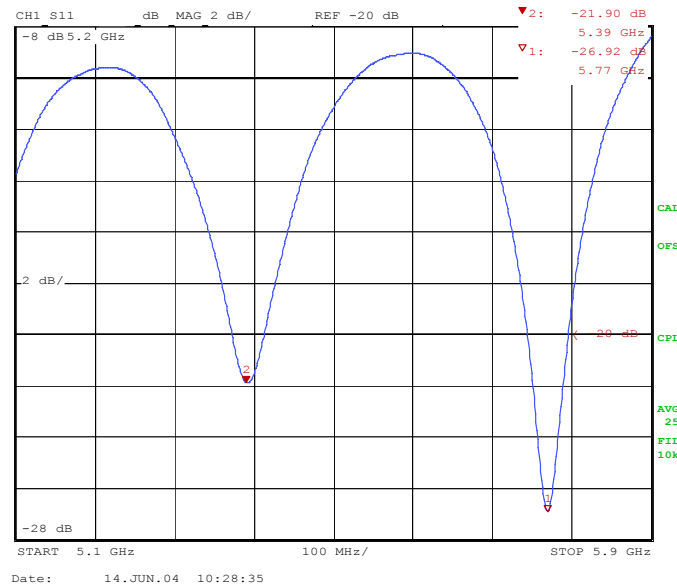


Figure 2: |S11| of the Waveguide spaced 8mm from the filled phantom.

4.3.1 5 GHz validation parameters.

The measurement was performed at 5360 MHz, and 5740 MHz (which is within 10 % of the frequency band of interest).

| Frequency = 5360 MHz | | Target value (W/kg) | Measured value (W/kg) | Deviation ² (%) |
|----------------------|-----------------------------|------------------------|--------------------------|-------------------------------|
| Date June 14, 2004 | Peak Spatial-Average SAR 1g | 35.8 | 35.5 | -0.8 |
| Date June 15, 2004 | Peak Spatial-Average SAR 1g | 35.8 | 35.4 | -1.1 |
| Date June 16, 2004 | Peak Spatial-Average SAR 1g | 35.8 | 35.4 | -1.1 |
| Date: June 24, 2004 | Peak Spatial-Average SAR 1g | 35.8 | 33.3 | -7.0 |

| Frequency = 5740 MHz | | Target value (W/kg) | Measured value (W/kg) | Deviation ³ (%) |
|----------------------|-----------------------------|------------------------|--------------------------|-------------------------------|
| Date: June 15, 2004 | Peak Spatial-Average SAR 1g | 39.5 | 41.67 | 5.5 |
| Date June 16, 2004 | Peak Spatial-Average SAR 1g | 39.5 | 40.28 | 2.0 |
| Date June 24, 2004 | Peak Spatial-Average SAR 1g | 39.5 | 40.77 | 3.2 |

² Deviation is calculated: $100\% * ((\text{measured value}) / (\text{reference value}) - 1)$

³ Deviation is calculated: $100\% * ((\text{measured value}) / (\text{reference value}) - 1)$



Test specification(s): FCC/CA SAR requirements
Description of EUT: 2.4/5 GHz IEEE 802.11g/a WLAN Cardbus card
Manufacturer: Agere Systems Nederland B.V.
Brand mark: Agere
Model: 1106
FCC ID: IMR1106CB

4.4 Measured maximum output power of EUT.

The EUT has been set to the maximum output power level as stated by the manufacturer and/or the operating requirements of the system (see section 3.3 of this test report, EUT test operating configurations).

The results of tests on the EUT are depicted in table below. Listed is the higher of the conducted average power including antenna gain (EIRP).

4.4.1 Measured average power at 2.4 GHz.

| Transmission bit-rate DSSS mode (Mbit/s) | Average transmit output power (conducted + antenna gain, dBm) | | |
|---|---|----------------------|-----------------------|
| | Channel 1 (2412 MHz) | Channel 6 (2437 MHz) | Channel 11 (2462 MHz) |
| 1 | 21.3 | 21.2 | 21.2 |
| 2 | 21.3 | 21.2 | 21.2 |
| 5.5 | 20.6 | 21.3 | 21.4 |
| 11 | 21.4 | 21.3 | 21.3 |

Table 1: Average output power (EIRP)

| Transmission bit-rate OFDM mode (Mbit/s) | Average transmit output power (conducted + antenna gain, dBm) | | |
|---|---|----------------------|-----------------------|
| | Channel 1 (2412 MHz) | Channel 6 (2437 MHz) | Channel 11 (2462 MHz) |
| 6 | 20.6 | 21.4 | 21.2 |
| 18 | 20.6 | 21.4 | 21.2 |
| 36 | 20.6 | 21.4 | 21.2 |
| 54 | 18.0 | 18.0 | 17.6 |

Table 2: Average output power (EIRP)

From table 1 and 2 it can be derived that at channel 6 the highest power is found. Therefore, the first SAR scan will be performed at channel 6 while using OFDM at bit-rate of 6 Mb/s (see also section 7.1 of this test report).



Test specification(s): FCC/CA SAR requirements
 Description of EUT: 2.4/5 GHz IEEE 802.11g/a WLAN Cardbus card
 Manufacturer: Agere Systems Nederland B.V.
 Brand mark: Agere
 Model: 1106
 FCC ID: IMR1106CB

4.4.2 Measured average power at 5 GHz.

| Transmission bit-rate (Mbit/s) | Average transmit output power (conducted + antenna gain, dBm) | | | |
|--------------------------------|---|-----------------------|-----------------------|-----------------------|
| | Channel 36 (5180 MHz) | Channel 48 (5240 MHz) | Channel 52 (5260 MHz) | Channel 64 (5320 MHz) |
| 6 | 17.4 | 19.0 | 20.4 | 17.9 |
| 18 | 17.4 | 19.0 | 20.4 | 17.9 |
| 36 | 17.4 | 19.0 | 20.4 | 17.9 |
| 54 | 17.4 | 17.0 | 17.2 | 17.0 |

Table 3: Average output power (EIRP)

| Transmission bit-rate (Mbit/s) | Average transmit output power (conducted + antenna gain, dBm) | | |
|--------------------------------|---|------------------------|------------------------|
| | Channel 157 (5785 MHz) | Channel 161 (5805 MHz) | Channel 165 (5825 MHz) |
| 6 | 17.1 | 16.8 | 17.2 |
| 18 | 17.1 | 16.8 | 17.2 |
| 36 | 17.1 | 16.8 | 17.2 |
| 54 | 14.2 | 13.8 | 13.6 |

Table 4: Average output power (EIRP)

From tables 3 and 4 it can be derived that at channels 52 and 165 the highest output power is found. Therefore, the first SAR scan will be performed at those channels (see also section 7.1 of this test report).

The power levels were monitored before and after each full 3D scan. In addition a 30 minutes power stability measurement was done. The drift occurs in the first 10 minutes of the measurement.

| Transmission bit-rate (Mbit/s) | Average transmit output power drift (dB) | | |
|--------------------------------|--|-----------------------|------------------------|
| | Channel 6 (2437 MHz) | Channel 52 (5240 MHz) | Channel 165 (5825 MHz) |
| OFDM 9 | 0.4 | 0.4 | 0.4 |

Table 5: Average output power drift



Test specification(s): FCC/CA SAR requirements
Description of EUT: 2.4/5 GHz IEEE 802.11g/a WLAN Cardbus card
Manufacturer: Agere Systems Nederland B.V.
Brand mark: Agere
Model: 1106
FCC ID: IMR1106CB

4.5 Tissue simulating liquid dielectric parameters.

For the purpose of the tests as described in this report the following tissue dielectric parameters have been determined.

The tables indicate the dielectric parameters of the liquids used during the tests. The indicated required values are derived from IEEE Std. 1528-2003 and OET Bulletin 65 supplement C.

At frequencies other than reference frequencies, for which tissue parameters are given in the standards, the parameters have been determined by the linear interpolation. Depending on the intended use of the EUT the interpolated values will refer to the mid-band frequency of each operating mode.

The measurement method is described in section 10.4 of this test report.

Deviation of the actual parameters vs. the prescribed parameters is calculated according to: $D = (A/T - 1) * 100\%$, where D is deviation in %, A is the actual value and T is the target value.

Note: The liquids are mixed in December 2003. During several SAR evaluations throughout 2004, the liquids proved to be stable. Deviation from target are always within 10 %. Because of the stability, only one measurement for these liquids has been done.

Liquids as obtained from Bristol University have been used during all tests.

4.5.1 Mixing procedures and recipe.

All Tissue Equivalent Liquids are obtained from Bristol University. The recipe is proprietary.

Contact details:
Medical Physics Department
University of Bristol, Bristol Haematology & Oncology Centre
Horfield road, Bristol BS2 8 ED, United Kingdom
Tel. 44 117 928 2469.

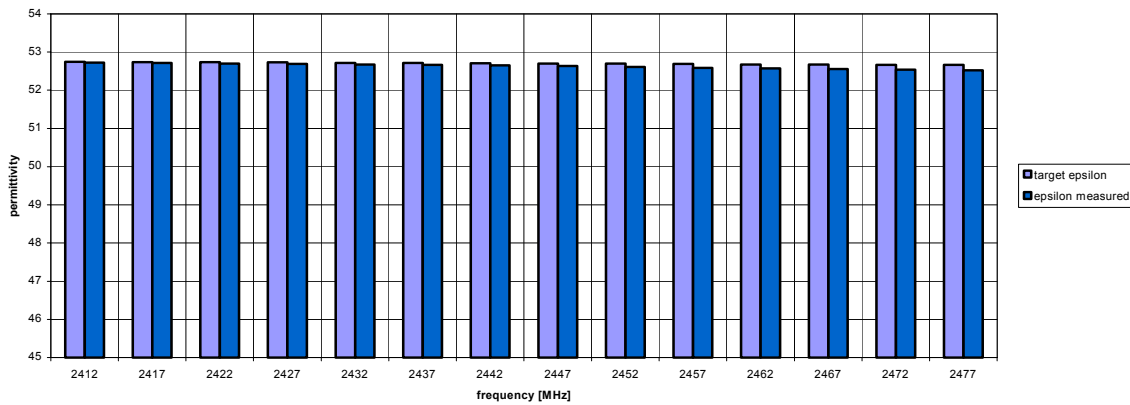


Test specification(s): FCC/CA SAR requirements
 Description of EUT: 2.4/5 GHz IEEE 802.11g/a WLAN Cardbus card
 Manufacturer: Agere Systems Nederland B.V.
 Brand mark: Agere
 Model: 1106
 FCC ID: IMR1106CB

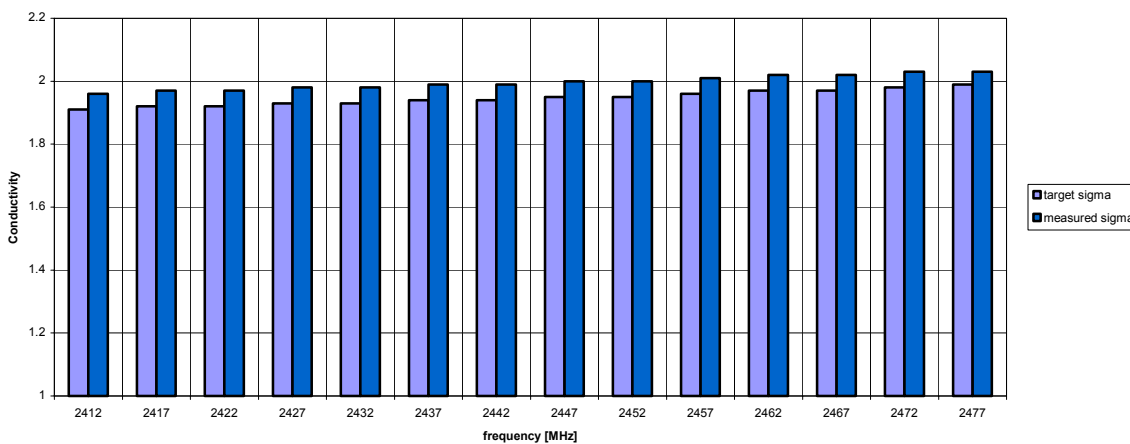
4.5.2 Dielectric parameters for 2.4 GHz, body tissue.

| Freq (MHz) | ϵ | σ | ϵ | | σ | | Measured | | | |
|------------|------------|----------|------------|-------|----------|------|------------|----------|----------|----------|
| | | | Min | Max | Min | Max | ϵ | Δ | σ | Δ |
| 2412 | 52.75 | 1.91 | 47.78 | 58.03 | 1.72 | 2.11 | 52.72 | -0.05% | 1.96 | 2.57% |
| 24.37 | 52.72 | 1.94 | 47.45 | 57.99 | 1.74 | 2.13 | 52.67 | -0.1% | 1.99 | 2.48% |
| 2462 | 52.68 | 1.97 | 47.42 | 57.95 | 1.77 | 2.16 | 52.57 | -0.2% | 2.02 | 2.46% |

2.4 GHz body liquid validation



2.4 GHz body liquid validation



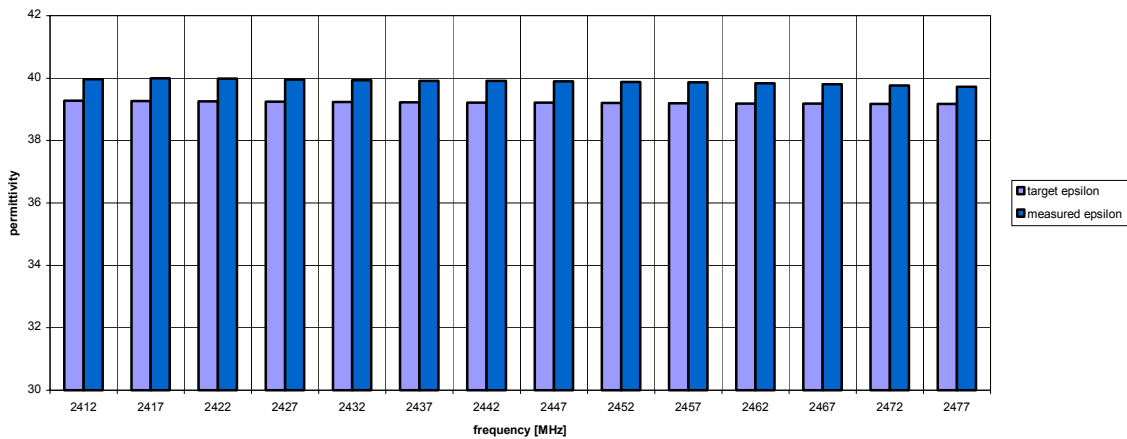


Test specification(s): FCC/CA SAR requirements
 Description of EUT: 2.4/5 GHz IEEE 802.11g/a WLAN Cardbus card
 Manufacturer: Agere Systems Nederland B.V.
 Brand mark: Agere
 Model: 1106
 FCC ID: IMR1106CB

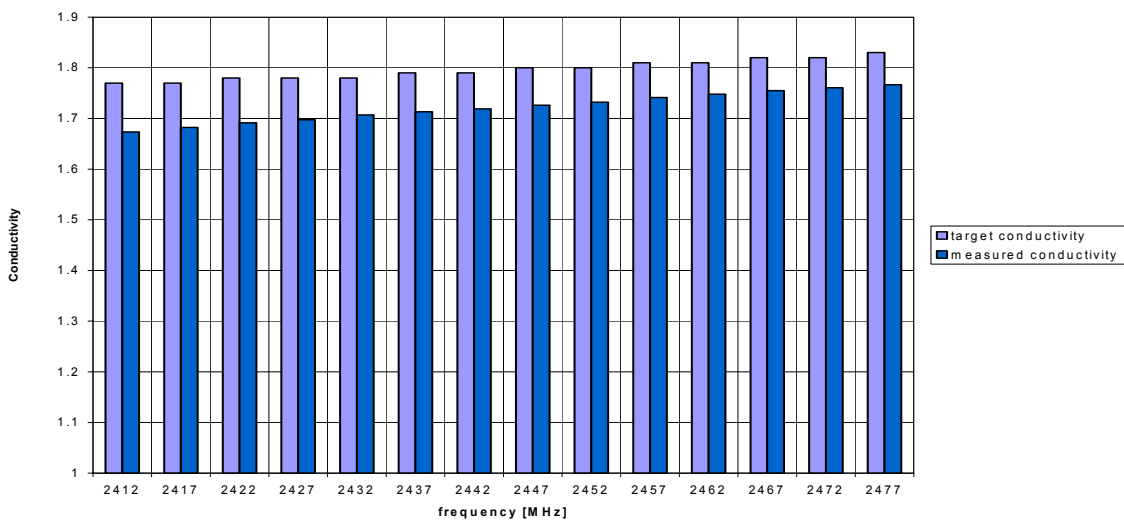
4.5.3 Dielectric parameters for 2.4 GHz, head tissue.

| Freq (MHz) | ϵ | σ | ϵ | | σ | | Measured | | | |
|------------|------------|----------|------------|-------|----------|------|--------------|--------------|-------------|---------------|
| | | | Min | Max | Min | Max | ϵ | Δ | σ | Δ |
| 2412 | 39.27 | 1.77 | 35.34 | 43.10 | 1.63 | 1.99 | 39.97 | 1.78% | 1.67 | -5.44% |
| 24.37 | 39.22 | 1.79 | 35.30 | 43.15 | 1.61 | 1.97 | 39.92 | 1.77% | 1.71 | -4.27% |
| 2462 | 39.18 | 1.81 | 35.27 | 35.27 | 43.10 | 1.99 | 39.83 | 1.67% | 1.75 | -3.42% |

2.4 GHz head liquid validation



2.4 GHz head liquid validation



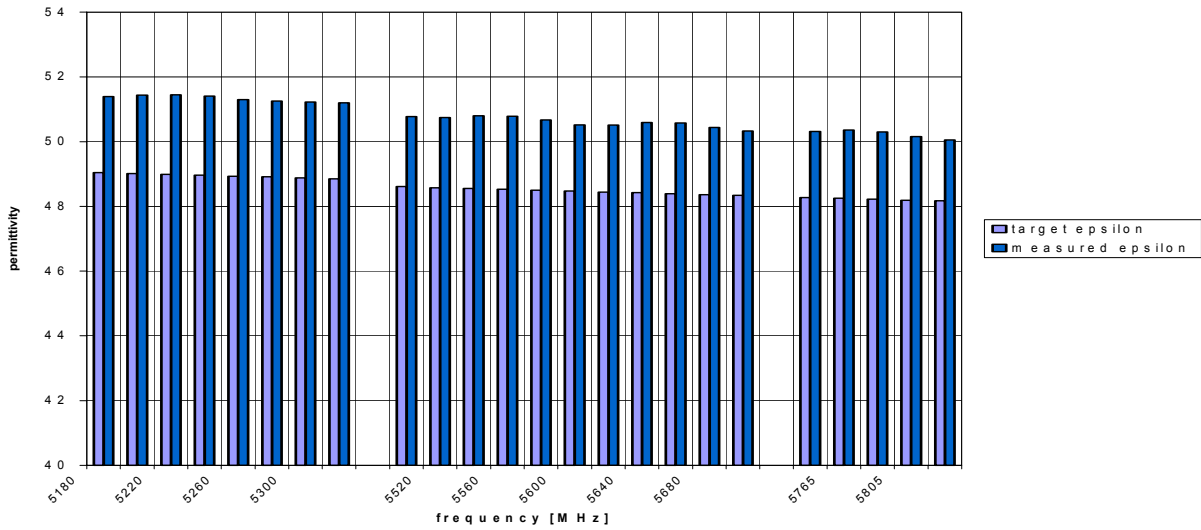


Test specification(s): FCC/CA SAR requirements
 Description of EUT: 2.4/5 GHz IEEE 802.11g/a WLAN Cardbus card
 Manufacturer: Agere Systems Nederland B.V.
 Brand mark: Agere
 Model: 1106
 FCC ID: IMR1106CB

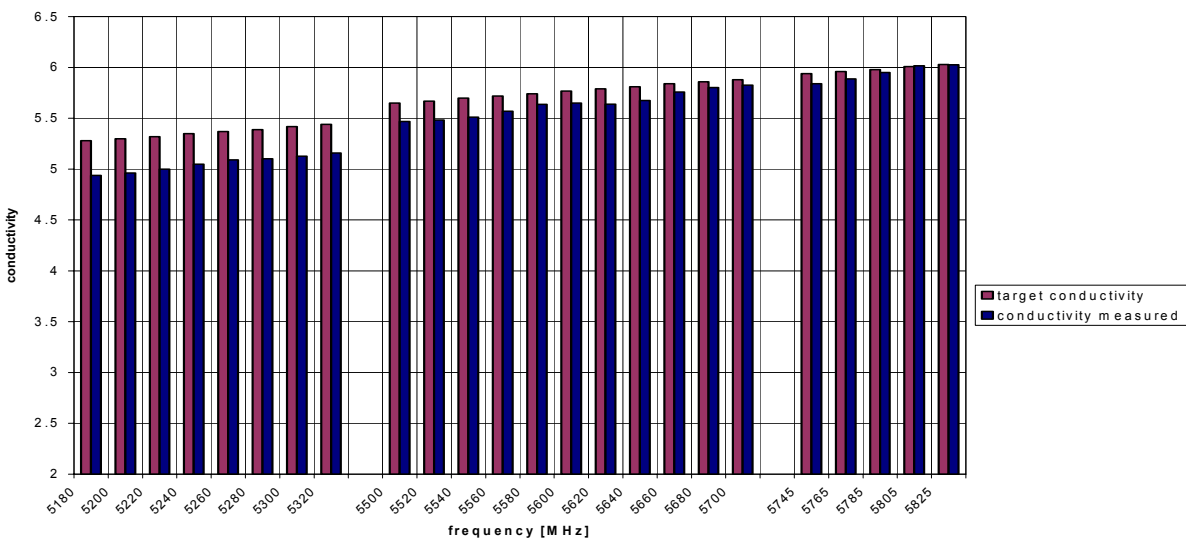
4.5.4 Dielectric parameters for 5 GHz body tissue.

| Freq (MHz) | ϵ | σ | ϵ | | σ | | Measured | | | |
|------------|------------|----------|------------|-------|----------|------|--------------|--------------|-------------|---------------|
| | | | Min | Max | Min | Max | ϵ | Δ | σ | Δ |
| 5180 | 49.04 | 5.28 | 44.14 | 53.95 | 4.75 | 5.8 | 51.39 | 4.79% | 4.94 | -6.48% |
| 5600 | 48.47 | 5.77 | 43.62 | 53.32 | 5.19 | 6.34 | 50.67 | 4.48% | 5.64 | -1.79% |
| 5825 | 48.17 | 6.03 | 43.35 | 52.98 | 5.43 | 6.63 | 50.05 | 3.91% | 6.03 | -0.06% |

5 GHz body liquid validaton



5 GHz body liquid validaton



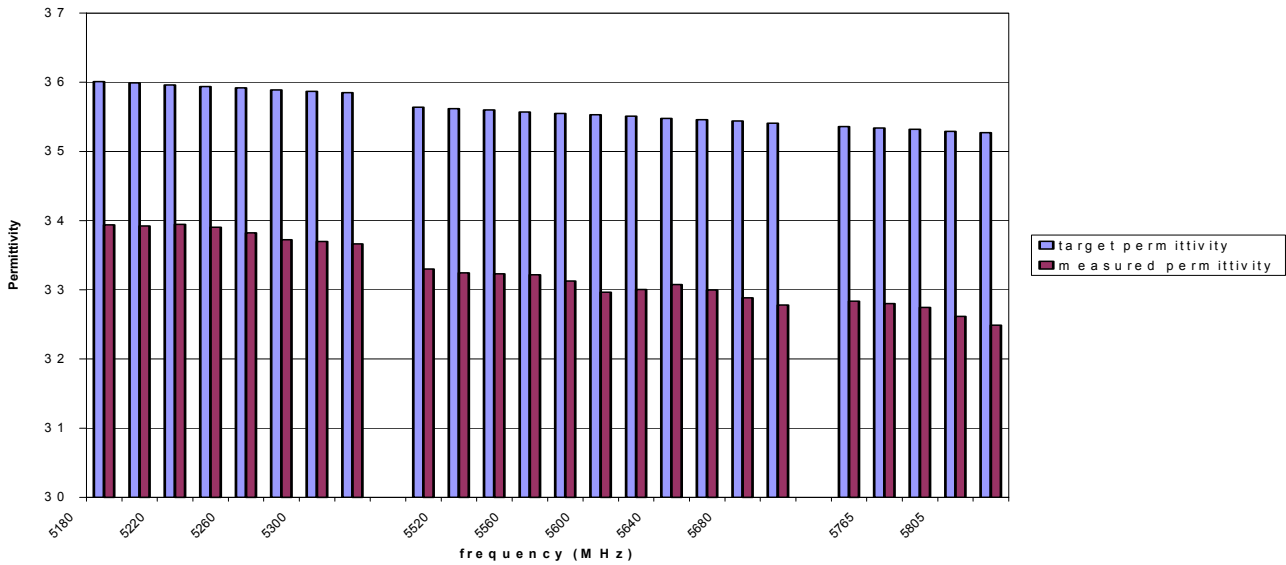


Test specification(s): FCC/CA SAR requirements
 Description of EUT: 2.4/5 GHz IEEE 802.11g/a WLAN Cardbus card
 Manufacturer: Agere Systems Nederland B.V.
 Brand mark: Agere
 Model: 1106
 FCC ID: IMR1106CB

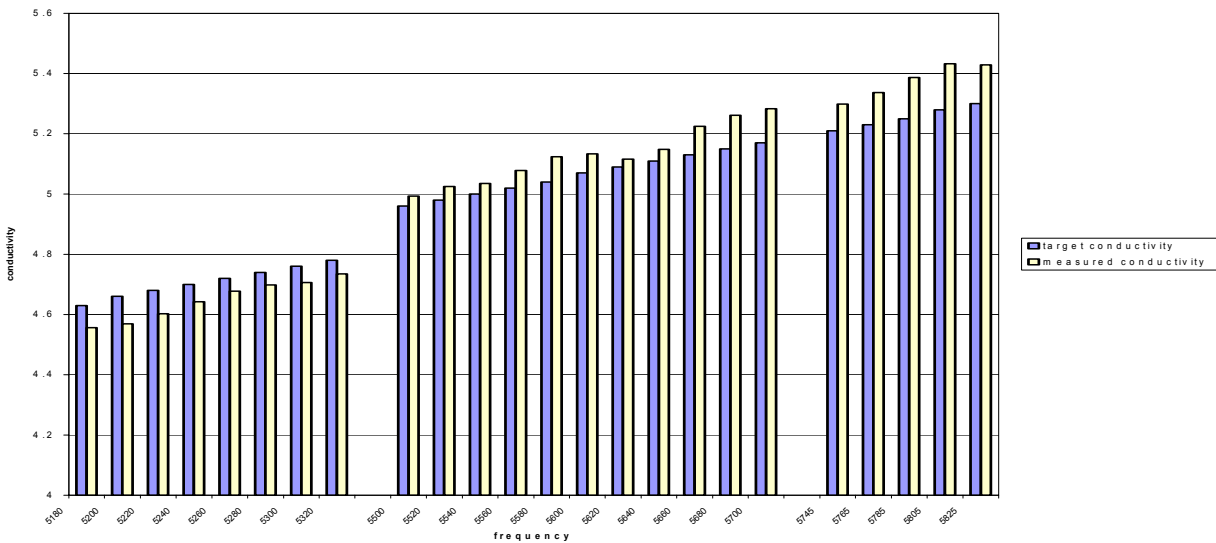
4.5.5 Dielectric parameters for 5 GHz, head tissue.

| Freq (MHz) | ϵ | σ | ϵ | | σ | | Measured | | | |
|------------|------------|----------|------------|-------|----------|------|------------|----------|----------|----------|
| | | | Min | Max | Min | Max | ϵ | Δ | σ | Δ |
| 5180 | 36.01 | 4.63 | 32.41 | 39.61 | 4.17 | 5.10 | 33.9 | -5.86% | 4.56 | -1.51% |
| 5600 | 35.53 | 5.07 | 31.98 | 39.08 | 4.56 | 5.57 | 33.3 | -6.57% | 4.99 | 0.60% |
| 5825 | 35.27 | 5.30 | 31.74 | 38.80 | 4.77 | 5.83 | 32.49 | -7.88% | 5.42 | 2.26% |

5G head liquid



5G head liquid





Test specification(s): FCC/CA SAR requirements
Description of EUT: 2.4/5 GHz IEEE 802.11g/a WLAN Cardbus card
Manufacturer: Agere Systems Nederland B.V.
Brand mark: Agere
Model: 1106
FCC ID: IMR1106CB

4.5.6 Tissue simulating liquid temperature requirements.

The variation of the liquid temperature shall not exceed ± 2 °C during all tests. The actual tissue simulating liquid temperature was recorded and the variation in temperature was found to be within this limit.

5 Photographs of EUT in host.

5.1 Host IBM

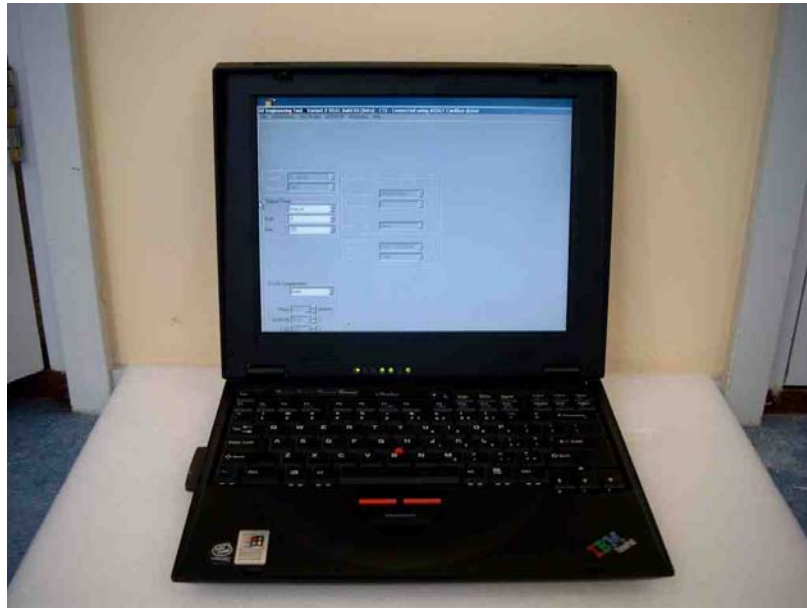


Figure 3: Front view with card in bottom slot



Figure 4: Side view. Offset Card to base = 13 mm

5.2 Host COMPAQ.



Figure 5: Front view with card in bottom slot

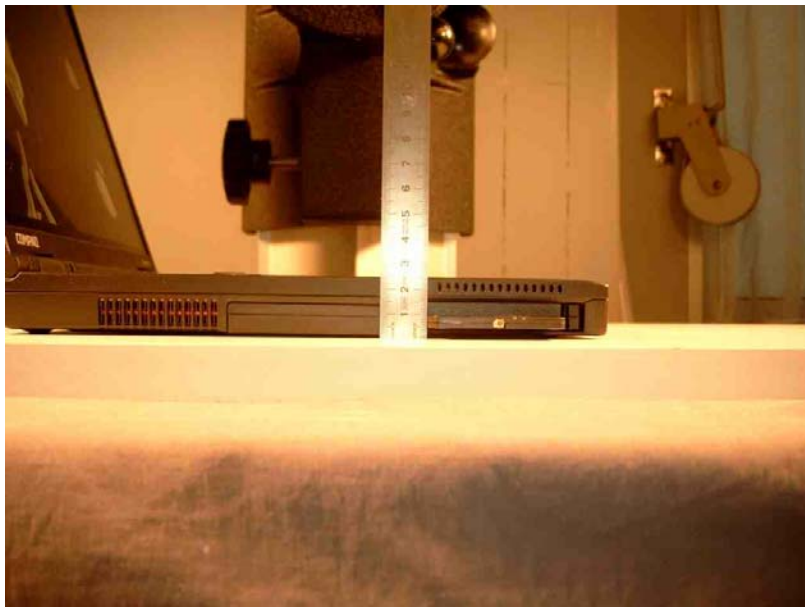


Figure 6: Side view. Offset Card to base = 5 mm

5.3 Host ACER.



Figure 7: Front view with card in bottom slot

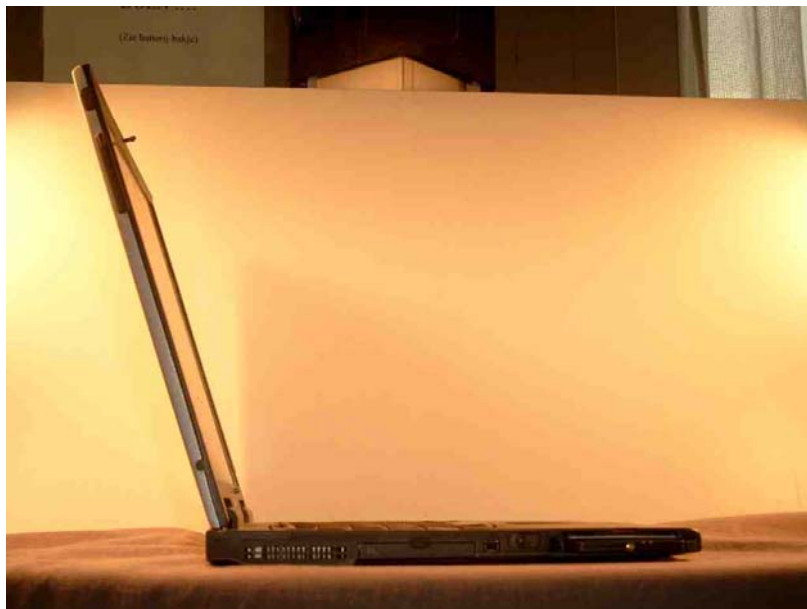


Figure 8: Side view. Offset Card to base = 8 mm



Test specification(s): FCC/CA SAR requirements
Description of EUT: 2.4/5 GHz IEEE 802.11g/a WLAN Cardbus card
Manufacturer: Agere Systems Nederland B.V.
Brand mark: Agere
Model: 1106
FCC ID: IMR1106CB

6 Identification of EUT-Phantom positions.

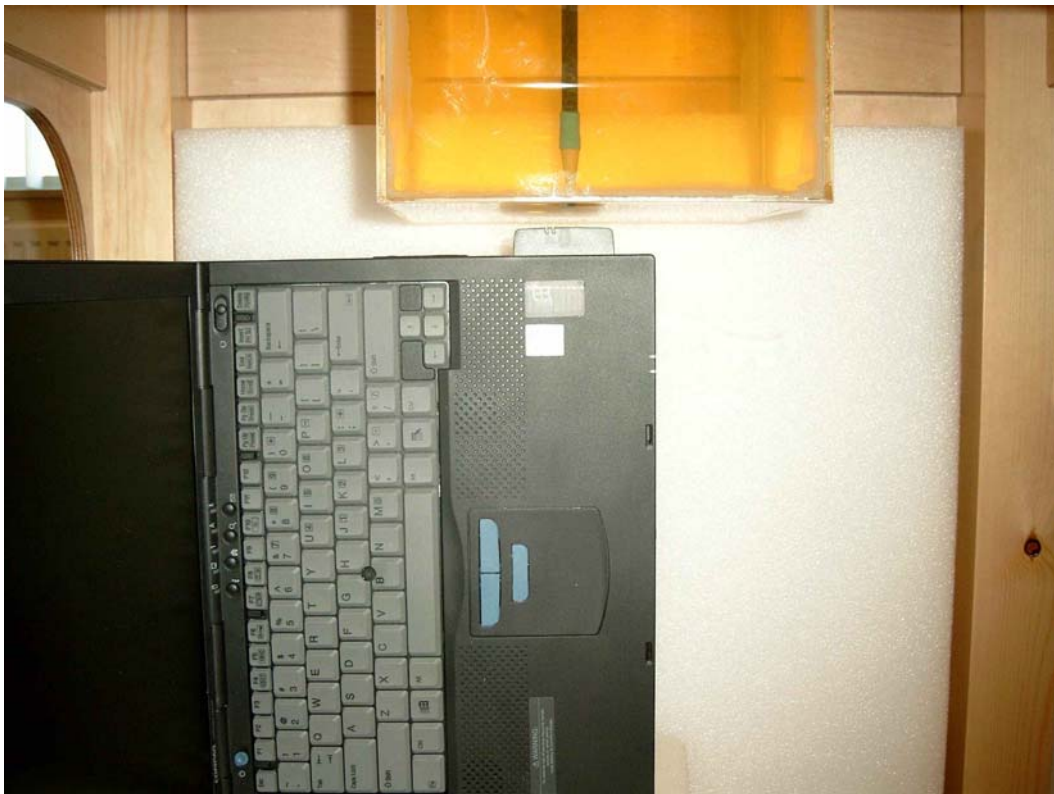
6.1 Portable device operating near the body.

Following the guidelines from FCC OET bulletin 65 C and the TCB RF exposure training notes, 2 positions were investigated. The 'lapheld' position reflects the situation where the laptop is placed on the users lap. The laptop containing the EUT is placed underneath the flat phantom with the EUT placed in the bottom slot, thus minimizing the distance of the EUT and the users body.

The second position reflects bystander SAR. This position means that the card is facing the phantom bottom shell perpendicularly. The position is referred to as 'perpendicular'. The separation distance is 5 mm, which still yields a useful reading of the field strength in the liquid.

6.1.1 Position perpendicular.

The separation distance, d of 10 mm measured from side of the EUT to the bottom of the phantom.



6.1.2 Position lapheld

This position follows the directions from FCC TCB training notes dated April 2002. This position reflects the situation where the user had the laptop on his or her lap, with the card inserted in the lower slot.

The separation distance, d was determined to be 13 mm, and reflects the position where the host would be positioned on the lap.





Test specification(s): FCC/CA SAR requirements
Description of EUT: 2.4/5 GHz IEEE 802.11g/a WLAN Cardbus card
Manufacturer: Agere Systems Nederland B.V.
Brand mark: Agere
Model: 1106
FCC ID: IMR1106CB

7 Test results.

7.1 Test methodology.

SAR evaluation starts with determining at which channels/modulation type/bit-rate combinations the SAR scans have to be performed.

In order to make this determination, the average conducted output power is measured at three channels for all combinations of modulation types and bit-rates.

The worst-case combination of channel/modulation type/bit-rate is determined by the highest level of output power found during all measurements.

At the channel where the highest level of output power is found, SAR is measured at the corresponding modulation type and bit-rate. Should it appear that SAR tests in this channel show higher SAR than half the limit, SAR is also measured in the highest and lowest channel of that frequency band.

After testing, the channel where the highest SAR value is found is rechecked by measuring spot SAR in that channel while setting all modulation types and bit-rates. Should a higher value be found, a full SAR scan is performed for that particular combination of modulation type/bit-rate.. The highest value found is reported.



Test specification(s): FCC/CA SAR requirements
 Description of EUT: 2.4/5 GHz IEEE 802.11g/a WLAN Cardbus card
 Manufacturer: Agere Systems Nederland B.V.
 Brand mark: Agere
 Model: 1106
 FCC ID: IMR1106CB

7.2 Measurement results.

| Host | Distance base to slot | Channel / modulation | Lapheld contact PSA ⁴ SAR 1g (W/kg) | Perpendicular + 10 mm PSA SAR (1g) (W/kg) |
|------------|-----------------------|--------------------------|--|---|
| ACER | 8 mm | 1 (2412) OFDM 6 Mbit/s | 0.548 | n.a. |
| | | 6 (2437) OFDM 6 Mbit/s | 0.891 | 0.436 |
| | | 11 (2462) OFDM 6 Mbit/s | 0.808 | n.a. |
| | | 36 (5180) OFDM 6 Mbit/s | 0.693 | n.a. |
| | | 48 (5240) OFDM 6 Mbit/s | 1.021 | n.a. |
| | | 52 (5260) OFDM 6 Mbit/s | 0.956 | 0.713 |
| | | 64 (5320) OFDM 6 Mbit/s | 0.652 | n.a. |
| | | 157 (5785) OFDM 6 Mbit/s | n.a. | n.a. |
| | | 161 (5805) OFDM 6 Mbit/s | n.a. | n.a. |
| | | 165 (5825) OFDM 6 Mbit/s | 0.529 | 0.406 |
| IBM | 10 mm | 1 (2412) OFDM 6 Mbit/s | 0.455 | n.a. |
| | | 6 (2437) OFDM 6 Mbit/s | 0.934 | 0.518 |
| | | 11 (2462) OFDM 6 Mbit/s | 0.884 | n.a. |
| | | 36 (5180) OFDM 6 Mbit/s | n.a. | n.a. |
| | | 48 (5240) OFDM 6 Mbit/s | n.a. | n.a. |
| | | 52 (5260) OFDM 6 Mbit/s | 0.363 | 0.501 |
| | | 64 (5320) OFDM 6 Mbit/s | n.a. | n.a. |
| | | 157 (5785) OFDM 6 Mbit/s | n.a. | n.a. |
| | | 161 (5805) OFDM 6 Mbit/s | n.a. | n.a. |
| | | 165 (5825) OFDM 6 Mbit/s | 0.188 | 0.203 |
| COMPAQ EVO | 5 mm | 1 (2412) OFDM 6 Mbit/s | 0.793 | n.a. |
| | | 6 (2437) OFDM 6 Mbit/s | 1.502 | 0.468 |
| | | 11 (2462) OFDM 6 Mbit/s | 1.414 | n.a. |
| | | 36 (5180) OFDM 6 Mbit/s | 0.507 | n.a. |
| | | 48 (5240) OFDM 6 Mbit/s | 1.02 | n.a. |
| | | 52 (5260) OFDM 6 Mbit/s | 1.456 | 0.703 |
| | | 64 (5320) OFDM 6 Mbit/s | 0.487 | n.a. |
| | | 157 (5785) OFDM 6 Mbit/s | 0.422 | 0.288 |
| | | 161 (5805) OFDM 6 Mbit/s | n.a. | n.a. |
| | | 165 (5825) OFDM 6 Mbit/s | n.a. | n.a. |

Note: When the SAR value, as measured at the channel with the highest output power level, is more than 3 dB below the SAR limit, testing of the other channels is optional (ref: OET Bulletin 65, Supplement C, page 40). No measurements have been performed at the channels indicated with “n.a.”.

⁴ PSA SAR is Peak Spatial-Average SAR.



Test specification(s): FCC/CA SAR requirements
Description of EUT: 2.4/5 GHz IEEE 802.11g/a WLAN Cardbus card
Manufacturer: Agere Systems Nederland B.V.
Brand mark: Agere
Model: 1106
FCC ID: IMR1106CB

7.3 Step size and scan information.

For 2412 - 2472 MHz a 35x35 mm area is scanned centered around the hotspot using 7 steps in the x-y plane and 10 steps of 3.5 mm in the z plane. The first area scan is performed with the probe tip 5 mm above the phantom bottom shell.

For 5150 - 5350 MHz a 21x21 mm area is scanned centered around the hotspot using 7 steps of 3 mm in the x-y plane, and 7 steps of 2 mm in the z plane. The first area scan is performed with the probe tip 2 mm above the phantom bottom shell.

For 5745 - 5825 MHz a 24x24 mm area is scanned centered around the hotspot using 8 steps of 3 mm in the x-y plane, and 7 steps of 2 mm in the z plane. The first area scan is performed with the probe tip 1 mm above the phantom bottom shell.

The location of the hotspot is determined prior to each 3D scan by means of an area scan.

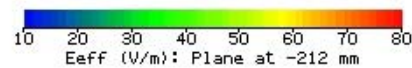
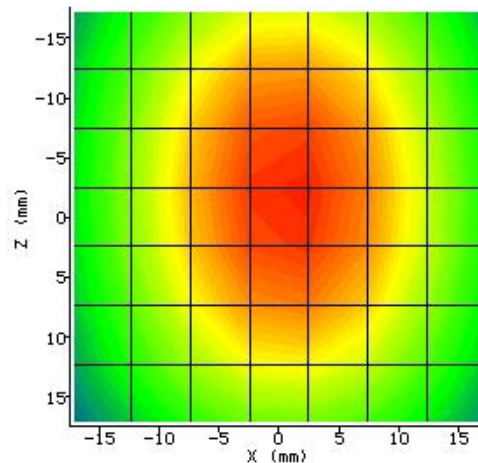
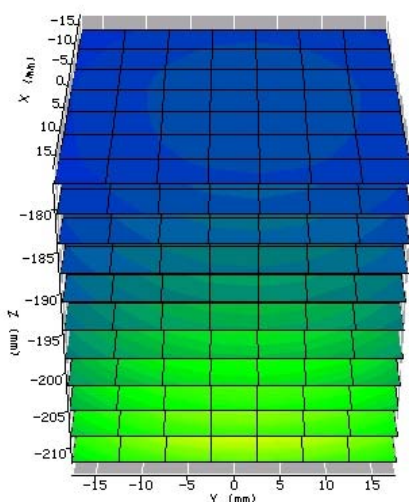


Test specification(s): FCC/CA SAR requirements
 Description of EUT: 2.4/5 GHz IEEE 802.11g/a WLAN Cardbus card
 Manufacturer: Agere Systems Nederland B.V.
 Brand mark: Agere
 Model: 1106
 FCC ID: IMR1106CB

8 Plots of measurement data.

8.1.1 System validation at 2450 MHz.

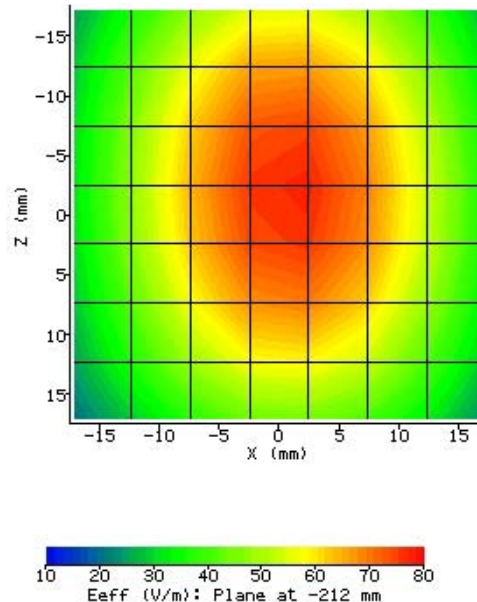
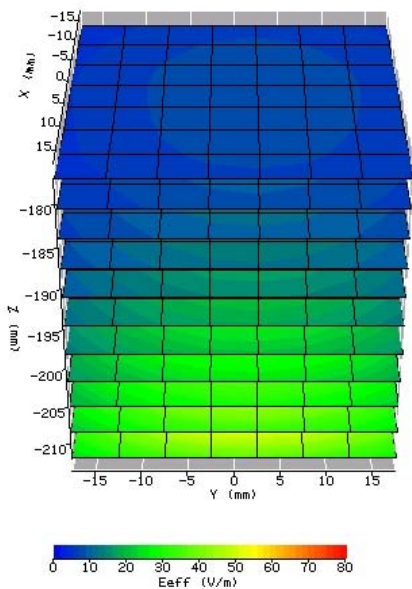
| | | | |
|-----------------------------------|--------------|-------------------------------------|-----------|
| Device Under Test: | | Validation dipole | |
| HOST | | n.a. | |
| Position / Channel | | n.a. | |
| DATE [dd/mm/yyyy] | | 17-6-2004 | |
| System / software: | | SARA v2.3 | |
| Phantom S/No: | Box phantom. | No. of steps x and y | 7 |
| Test Frequency [MHz] | 2450 | Stepsize x and y [mm] | 5 |
| Antenna Configuration: | Dipole | No of steps z | 10 |
| Power / (setting(s)) [dBm] | 24 | Stepsize z [mm] | 3.5 |
| Type of Modulation: | CW | Dist probe tip – phantom shell [mm] | 5 |
| Modn. Duty Cycle [%] | 100 | Probe conversion factor | 0.534 |
| Probe Serial Number: | 131 | Probe battery check [d/m/y]: | 17-6-2004 |
| Liquid Simulant: | Head | Max E-field [V/m in liquid] | 72.14 |
| Permittivity / Conductivity [S/m] | 39.2 / 1.8 | Location of max. X= [mm] | 3.5 |
| Liquid Temperature [C] | 20 | Location of max Y= [mm] | 0.5 |
| Ambient Temperature [C] | 22 | Location of max Z= [mm] | -212 |
| Relative Humidity [%] | 50 | SAR Drift: [dB] | 0 |
| Results: | | | |
| SAR 1g [W/kg]: | | 12.94 | |
| SAR 10g [W/kg]: | | 6.53 | |





Test specification(s): FCC/CA SAR requirements
 Description of EUT: 2.4/5 GHz IEEE 802.11g/a WLAN Cardbus card
 Manufacturer: Agere Systems Nederland B.V.
 Brand mark: Agere
 Model: 1106
 FCC ID: IMR1106CB

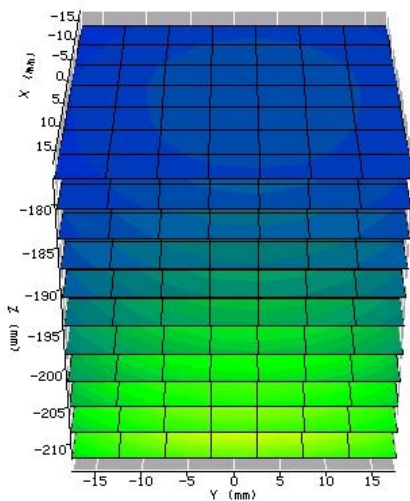
| | | | |
|-----------------------------------|--------------|-------------------------------------|-----------|
| Device Under Test: | | Validation dipole | |
| HOST | | n.a. | |
| Position / Channel | | n.a. | |
| DATE [dd/mm/yyyy] | | 18-6-2004 | |
| System / software: | | SARA v2.3 | |
| Phantom S/No: | Box phantom. | No. of steps x and y | 7 |
| Test Frequency [MHz] | 2450 | Stepsize x and y [mm] | 5 |
| Antenna Configuration: | Dipole | No of steps z | 10 |
| Power / (setting(s) [dBm] | 24 | Stepsize z [mm] | 3.5 |
| Type of Modulation: | CW | Dist probe tip – phantom shell [mm] | 5 |
| Modn. Duty Cycle [%] | 100 | Probe conversion factor | 0.534 |
| Probe Serial Number: | 131 | Probe battery check [d/m/y]: | 18-6-2004 |
| Liquid Simulant: | Head | Max E-field [V/m in liquid] | 77.13 |
| Permittivity / Conductivity [S/m] | 39.2 / 1.8 | Location of max. X= [mm] | 1.5 |
| Liquid Temperature [C] | 20 | Location of max Y= [mm] | 2 |
| Ambient Temperature [C] | 22 | Location of max Z= [mm] | -212 |
| Relative Humidity [%] | 50 | SAR Drift: [dB] | 0 |
| Results: | | | |
| SAR 1g [W/kg]: | | 12.52 | |
| SAR 10g [W/kg]: | | 6.40 | |



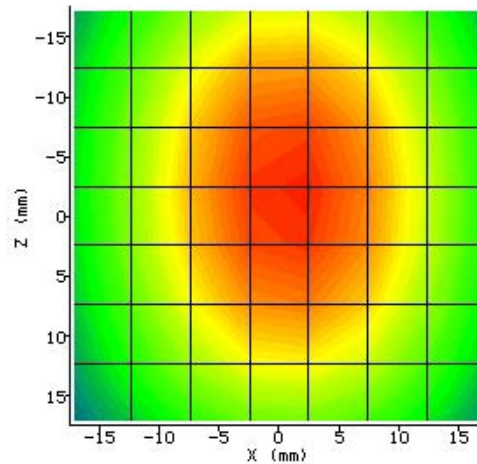


Test specification(s): FCC/CA SAR requirements
 Description of EUT: 2.4/5 GHz IEEE 802.11g/a WLAN Cardbus card
 Manufacturer: Agere Systems Nederland B.V.
 Brand mark: Agere
 Model: 1106
 FCC ID: IMR1106CB

| | | | |
|-----------------------------------|--------------|-------------------------------------|-----------|
| Device Under Test: | | Validation dipole | |
| HOST | | n.a. | |
| Position / Channel | | n.a. | |
| DATE [dd/mm/yyyy] | | 23-6-2004 | |
| System / software: | | SARA v2.3 | |
| Phantom S/No: | Box phantom. | No. of steps x and y | 7 |
| Test Frequency [MHz] | 2450 | Stepsize x and y [mm] | 5 |
| Antenna Configuration: | Dipole | No of steps z | 10 |
| Power / (setting(s) [dBm] | 24 | Stepsize z [mm] | 3.5 |
| Type of Modulation: | CW | Dist probe tip – phantom shell [mm] | 5 |
| Modn. Duty Cycle [%] | 100 | Probe conversion factor | 0.534 |
| Probe Serial Number: | 131 | Probe battery check [d/m/y]: | 23-6-2004 |
| Liquid Simulant: | Head | Max E-field [V/m in liquid] | 75.64 |
| Permittivity / Conductivity [S/m] | 35.2 / 1.80 | Location of max. X= [mm] | 1.5 |
| Liquid Temperature [C] | 20 | Location of max Y= [mm] | 2 |
| Ambient Temperature [C] | 22 | Location of max Z= [mm] | -212 |
| Relative Humidity [%] | 50 | SAR Drift: [dB] | 0.0 |
| Results: | | | |
| SAR 1g [W/kg]: | | 13.837 | |
| SAR 10g [W/kg]: | | 7.054 | |



0 10 20 30 40 50 60 70 80
E_{eff} (V/m)



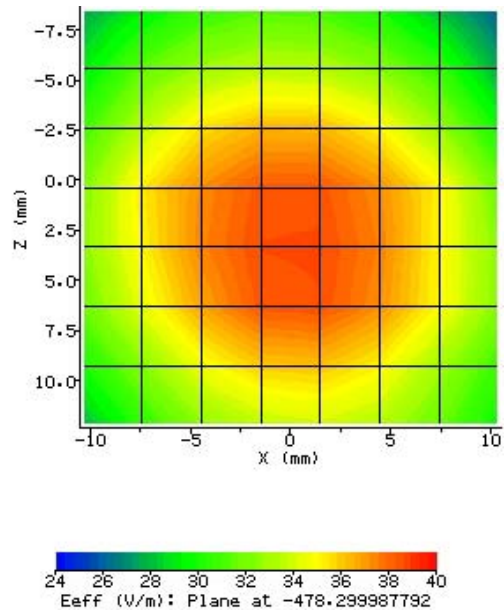
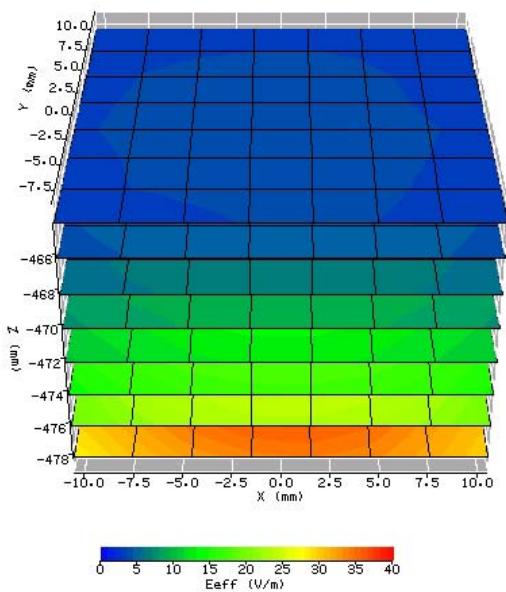
10 20 30 40 50 60 70 80
E_{eff} (V/m): Plane at -212 mm



Test specification(s): FCC/CA SAR requirements
 Description of EUT: 2.4/5 GHz IEEE 802.11g/a WLAN Cardbus card
 Manufacturer: Agere Systems Nederland B.V.
 Brand mark: Agere
 Model: 1106
 FCC ID: IMR1106CB

8.1.2 System validation at 5360 MHz.

| Device Under Test: | | Validation Waveguide | |
|-----------------------------------|--------------|-------------------------------------|-----------|
| HOST | | n.a. | |
| Position / Channel | | n.a. | |
| DATE [dd/mm/yyyy] | | 14-6-2004 | |
| System / software: | | SARA v2.3 | |
| Phantom S/No: | Box phantom. | No. of steps x and y | 7 |
| Test Frequency [MHz] | 5360 | Stepsize x and y [mm] | 3 |
| Antenna Configuration: | Waveguide | No. of steps z | 7 |
| Power / (setting(s)) [dBm] | 24 | Stepsize z [mm] | 2 |
| Type of Modulation: | CW | Dist probe tip – phantom shell [mm] | 2 |
| Modn. Duty Cycle [%] | 100 | Probe conversion factor | 0.480 |
| Probe Serial Number: | 131 | Probe battery check [d/m/y]: | 14-6-2004 |
| Liquid Simulant: | Head | Max E-field [V/m in liquid] | 44.43 |
| Permittivity / Conductivity [S/m] | 35.9 / 4.8 | Location of max. X= [mm] | -0.7 |
| Liquid Temperature [C] | 21.2 | Location of max Y= [mm] | -10.3 |
| Ambient Temperature [C] | 22.0 | Location of max Z= [mm] | -478.3 |
| Relative Humidity [%] | 50 | SAR Drift: [dB] | 0.03 |
| Results: | | | |
| SAR 1g [W/kg]: | | 8.882 | |
| SAR 10g [W/kg]: | | 4.199 | |

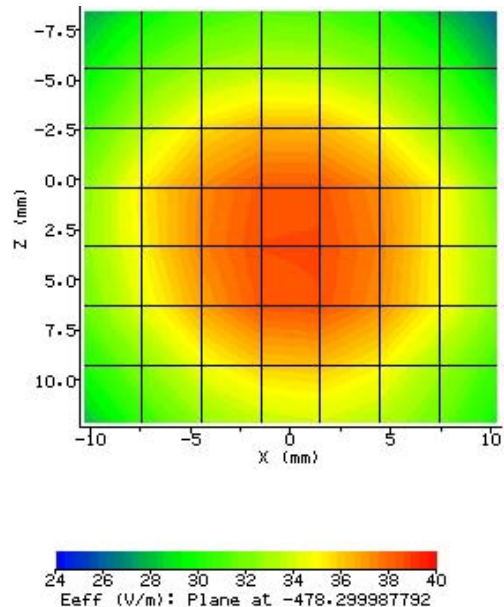
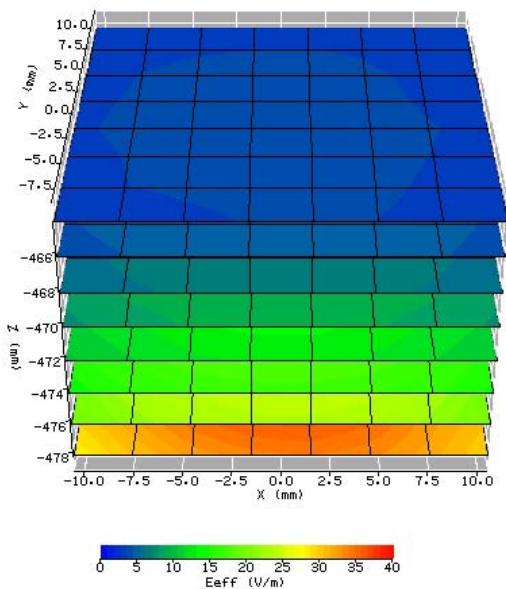




Test specification(s): FCC/CA SAR requirements
 Description of EUT: 2.4/5 GHz IEEE 802.11g/a WLAN Cardbus card
 Manufacturer: Agere Systems Nederland B.V.
 Brand mark: Agere
 Model: 1106
 FCC ID: IMR1106CB

8.1.3 System validation at 5360 MHz.

| Device Under Test: | | Validation Waveguide | |
|-----------------------------------|--------------|-------------------------------------|-----------|
| HOST | | n.a. | |
| Position / Channel | | n.a. | |
| DATE [dd/mm/yyyy] | | 15-6-2004 | |
| System / software: | | SARA v2.3 | |
| Phantom S/No: | Box phantom. | No. of steps x and y | 7 |
| Test Frequency [MHz] | 5360 | Stepsize x and y [mm] | 3 |
| Antenna Configuration: | Waveguide | No. of steps z | 10 |
| Power / (setting(s)) [dBm] | 24 | Stepsize z [mm] | 2 |
| Type of Modulation: | CW | Dist probe tip – phantom shell [mm] | 2 |
| Modn. Duty Cycle [%] | 100 | Probe conversion factor | 0.48 |
| Probe Serial Number: | 131 | Probe battery check [d/m/y]: | 15-6-2004 |
| Liquid Simulant: | Head | Max E-field [V/m in liquid] | 45.2 |
| Permittivity / Conductivity [S/m] | 35.9 / 4.8 | Location of max. X= [mm] | -9.2 |
| Liquid Temperature [C] | 23.0 | Location of max Y= [mm] | 1.5 |
| Ambient Temperature [C] | 23.0 | Location of max Z= [mm] | 478.3 |
| Relative Humidity [%] | 50.0 | SAR Drift: [dB] | -0.51 |
| Results: | | | |
| SAR 1g [W/kg]: | | 8.829 | |
| SAR 10g [W/kg]: | | 4.100 | |

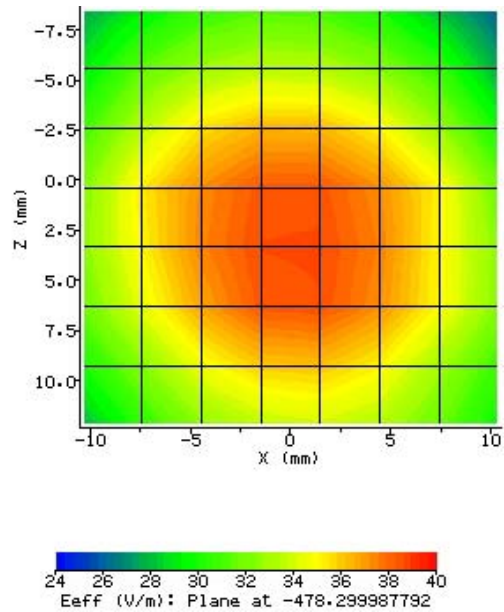
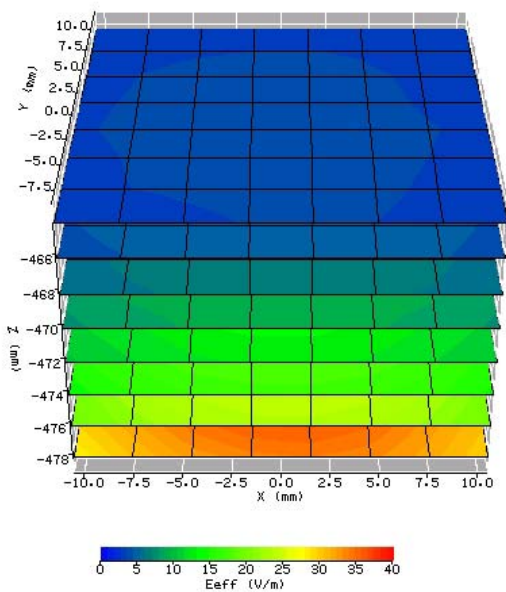




Test specification(s): FCC/CA SAR requirements
 Description of EUT: 2.4/5 GHz IEEE 802.11g/a WLAN Cardbus card
 Manufacturer: Agere Systems Nederland B.V.
 Brand mark: Agere
 Model: 1106
 FCC ID: IMR1106CB

8.1.4 System validation at 5360 MHz.

| Device Under Test: | | Validation Waveguide | |
|-----------------------------------|--------------|-------------------------------------|-----------|
| HOST | | n.a. | |
| Position / Channel | | n.a. | |
| DATE [dd/mm/yyyy] | | 16-6-2004 | |
| System / software: | | SARA v2.3 | |
| Phantom S/No: | Box phantom. | No. of steps x and y | 7 |
| Test Frequency [MHz] | 5360 | Stepsize x and y [mm] | 3 |
| Antenna Configuration: | Waveguide | No. of steps z | 10 |
| Power / (setting(s)) [dBm] | 24 | Stepsize z [mm] | 2 |
| Type of Modulation: | CW | Dist probe tip – phantom shell [mm] | 2 |
| Modn. Duty Cycle [%] | 100 | Probe conversion factor | 0.48 |
| Probe Serial Number: | 131 | Probe battery check [d/m/y]: | 16-6-2004 |
| Liquid Simulant: | Head | Max E-field [V/m in liquid] | 38.5 |
| Permittivity / Conductivity [S/m] | 35.9 / 4.8 | Location of max. X= [mm] | 0.3 |
| Liquid Temperature [C] | 21.2 | Location of max Y= [mm] | 0.38 |
| Ambient Temperature [C] | 22 | Location of max Z= [mm] | -478.3 |
| Relative Humidity [%] | 48 | SAR Drift: [dB] | 0.03 |
| Results: | | | |
| SAR 1g [W/kg]: | | 8.849 | |
| SAR 10g [W/kg]: | | 4.001 | |

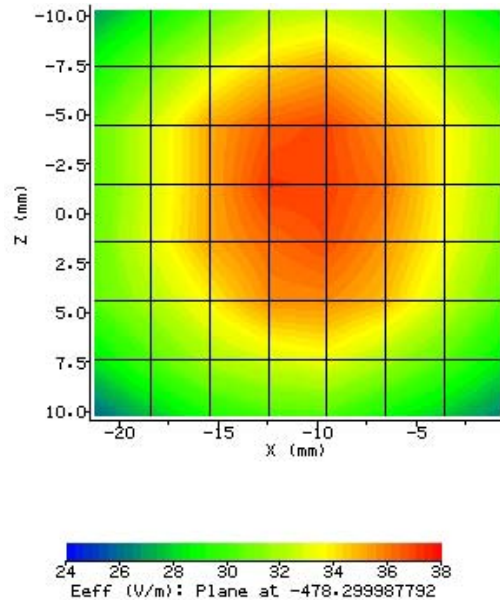
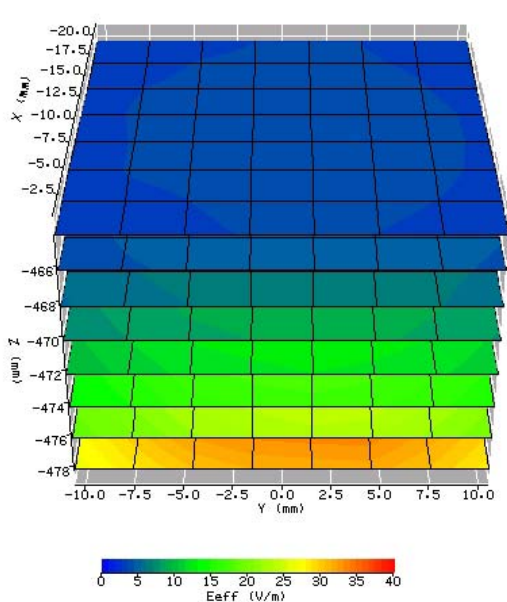




Test specification(s): FCC/CA SAR requirements
 Description of EUT: 2.4/5 GHz IEEE 802.11g/a WLAN Cardbus card
 Manufacturer: Agere Systems Nederland B.V.
 Brand mark: Agere
 Model: 1106
 FCC ID: IMR1106CB

8.1.5 System validation at 5360 MHz.

| Device Under Test: | | Validation Waveguide | |
|-----------------------------------|--------------|-------------------------------------|-----------|
| HOST | | n.a. | |
| Position / Channel | | n.a. | |
| DATE [dd/mm/yyyy] | | 24-6-2004 | |
| System / software: | | SARA v2.3 | |
| Phantom S/No: | Box phantom. | No. of steps x and y | 7 |
| Test Frequency [MHz] | 5360 | Stepsize x and y [mm] | 3 |
| Antenna Configuration: | Waveguide | No. of steps z | 10 |
| Power / (setting(s) [dBm] | 24 | Stepsize z [mm] | 2 |
| Type of Modulation: | CW | Dist probe tip – phantom shell [mm] | 2 |
| Modn. Duty Cycle [%] | 100 | Probe conversion factor | 0.48 |
| Probe Serial Number: | 131 | Probe battery check [d/m/y]: | 24-6-2004 |
| Liquid Simulant: | Head | Max E-field [V/m in liquid] | 37.3 |
| Permittivity / Conductivity [S/m] | 35.9 / 4.8 | Location of max. X= [mm] | -11.3 |
| Liquid Temperature [C] | 20.5 | Location of max Y= [mm] | 1.8 |
| Ambient Temperature [C] | 21 | Location of max Z= [mm] | -478.3 |
| Relative Humidity [%] | 56 | SAR Drift: [dB] | 0.13 |
| Results: | | | |
| SAR 1g [W/kg]: | | 8.316 | |
| SAR 10g [W/kg]: | | 3.728 | |

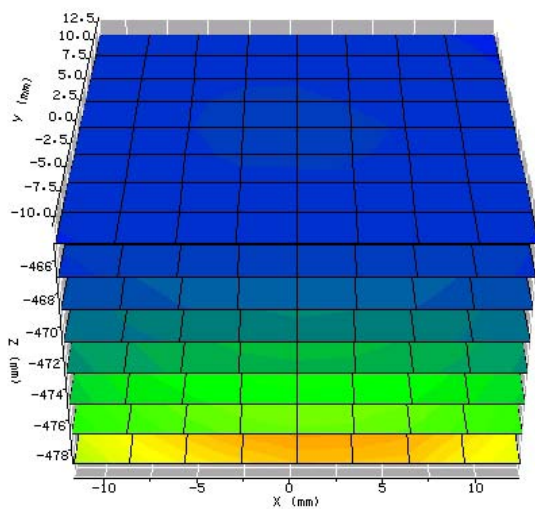




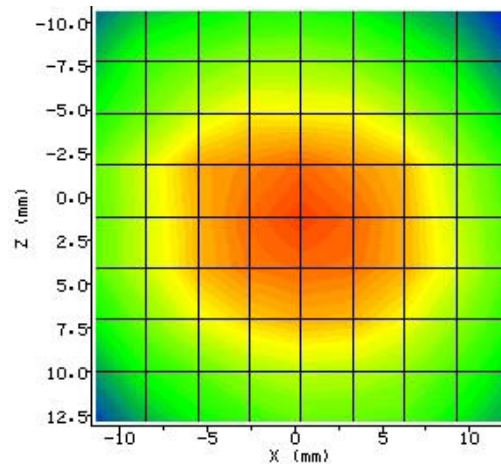
Test specification(s): FCC/CA SAR requirements
 Description of EUT: 2.4/5 GHz IEEE 802.11g/a WLAN Cardbus card
 Manufacturer: Agere Systems Nederland B.V.
 Brand mark: Agere
 Model: 1106
 FCC ID: IMR1106CB

8.1.6 System validation at 5740 MHz.

| Device Under Test: | | Validation Waveguide | |
|-----------------------------------|--------------|-------------------------------------|-----------|
| HOST | | n.a. | |
| Position / Channel | | n.a. | |
| DATE [dd/mm/yyyy] | | 15-6-2004 | |
| System / software: | | SARA v2.3 | |
| Phantom S/No: | Box phantom. | No. of steps x and y | 8 |
| Test Frequency [MHz] | 5740 | Stepsize x and y [mm] | 3 |
| Antenna Configuration: | Waveguide | No. of steps z | 7 |
| Power / (setting(s)) [dBm] | 24 | Stepsize z [mm] | 2 |
| Type of Modulation: | CW | Dist probe tip – phantom shell [mm] | 1 |
| Modn. Duty Cycle [%] | 100 | Probe conversion factor | 0.435 |
| Probe Serial Number: | 131 | Probe battery check [d/m/y]: | 15-6-2004 |
| Liquid Simulant: | Head | Max E-field [V/m in liquid] | 43.8 |
| Permittivity / Conductivity [S/m] | 35.4 / 5.2 | Location of max. X= [mm] | -8.55 |
| Liquid Temperature [C] | 21.2 | Location of max Y= [mm] | 1.7 |
| Ambient Temperature [C] | 22.0 | Location of max Z= [mm] | -479 |
| Relative Humidity [%] | 50 | SAR Drift: [dB] | 0 |
| Results: | | | |
| SAR 1g [W/kg]: | | 10.417 | |
| SAR 10g [W/kg]: | | 4.517 | |



0 5 10 15 20 25 30 35 40 45 50
E_{eff} (V/m)



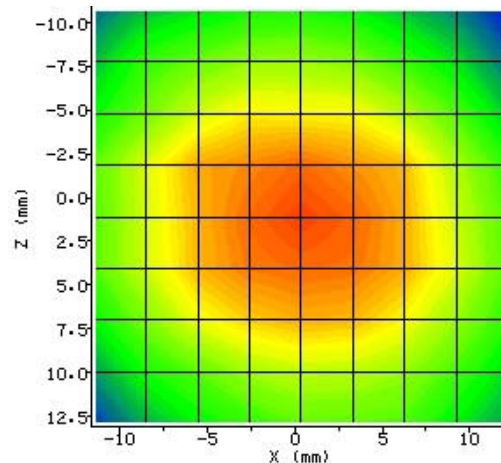
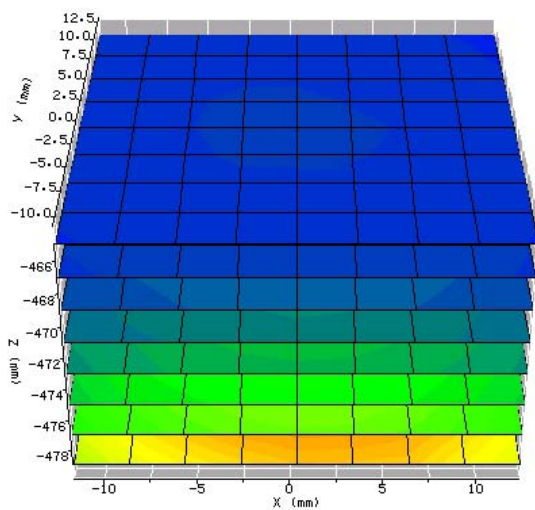
27.5 32.5 37.5 42.5 47.5
E_{eff} (V/m): Plane at -479 mm



Test specification(s): FCC/CA SAR requirements
 Description of EUT: 2.4/5 GHz IEEE 802.11g/a WLAN Cardbus card
 Manufacturer: Agere Systems Nederland B.V.
 Brand mark: Agere
 Model: 1106
 FCC ID: IMR1106CB

8.1.7 System validation at 5740 MHz.

| Device Under Test: | | Validation Waveguide | |
|-----------------------------------|--------------|-------------------------------------|-------|
| HOST | | n.a. | |
| Position / Channel | | n.a. | |
| DATE [dd/mm/yyyy] | | 16-6-2004 | |
| System / software: | | SARA v2.3 | |
| Phantom S/No: | Box phantom. | No. of steps x and y | 8 |
| Test Frequency [MHz] | 5740 | Stepsize x and y [mm] | 3 |
| Antenna Configuration: | Waveguide | No. of steps z | 7 |
| Power / (setting(s)) [dBm] | 24 | Stepsize z [mm] | 2 |
| Type of Modulation: | CW | Dist probe tip – phantom shell [mm] | 1 |
| Modn. Duty Cycle [%] | 100 | Probe conversion factor | 0.435 |
| Probe Serial Number: | 131 | Probe battery check [d/m/y]: | 16-6 |
| Liquid Simulant: | Head | Max E-field [V/m in liquid] | 47.7 |
| Permittivity / Conductivity [S/m] | 35.4 / 5.2 | Location of max. X= [mm] | 0.38 |
| Liquid Temperature [C] | 21.2 | Location of max Y= [mm] | 1.13 |
| Ambient Temperature [C] | 22.0 | Location of max Z= [mm] | -479 |
| Relative Humidity [%] | 48 | SAR Drift: [dB] | 0 |
| Results: | | | |
| SAR 1g [W/kg]: | | 10.07 | |
| SAR 10g [W/kg]: | | 4.367 | |

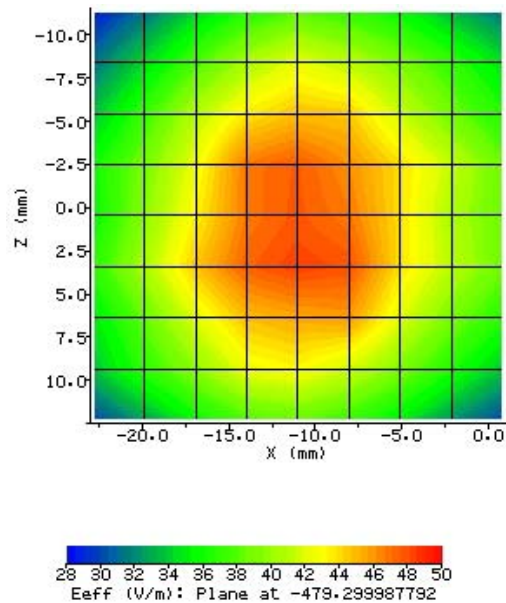
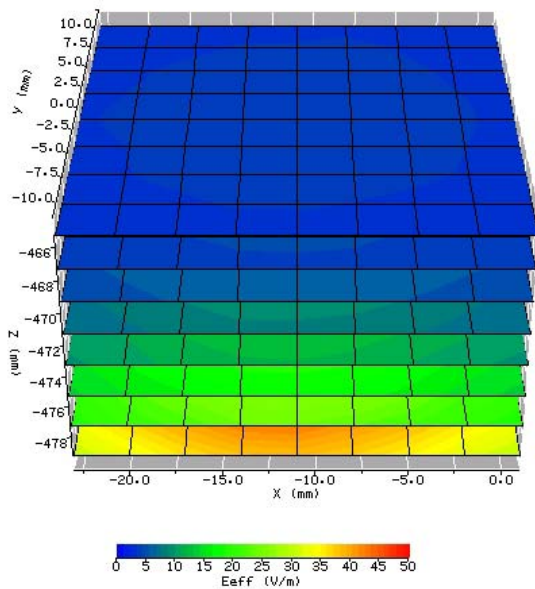




Test specification(s): FCC/CA SAR requirements
 Description of EUT: 2.4/5 GHz IEEE 802.11g/a WLAN Cardbus card
 Manufacturer: Agere Systems Nederland B.V.
 Brand mark: Agere
 Model: 1106
 FCC ID: IMR1106CB

8.1.8 System validation at 5740 MHz.

| Device Under Test: | | Validation Waveguide | |
|-----------------------------------|--------------|-------------------------------------|--------|
| HOST | | n.a. | |
| Position / Channel | | n.a. | |
| DATE [dd/mm/yyyy] | | 24-6-2004 | |
| System / software: | | SARA v2.3 | |
| Phantom S/No: | Box phantom. | No. of steps x and y | 8 |
| Test Frequency [MHz] | 5740 | Stepsize x and y [mm] | 3 |
| Antenna Configuration: | Waveguide | No. of steps z | 7 |
| Power / (setting(s)) [dBm] | 24 | Stepsize z [mm] | 2 |
| Type of Modulation: | CW | Dist probe tip – phantom shell [mm] | 1 |
| Modn. Duty Cycle [%] | 100 | Probe conversion factor | 0.435 |
| Probe Serial Number: | 131 | Probe battery check [d/m/y]: | 24-6 |
| Liquid Simulant: | Head | Max E-field [V/m in liquid] | 48.94 |
| Permittivity / Conductivity [S/m] | 35.4 / 5.2 | Location of max X= [mm] | -11 |
| Liquid Temperature [C] | 21.2 | Location of max Y= [mm] | -0.7 |
| Ambient Temperature [C] | 22.0 | Location of max Z= [mm] | -479.3 |
| Relative Humidity [%] | 50 | SAR Drift: [dB] | 0.07 |
| Results: | | | |
| SAR 1g [W/kg]: | | 10.192 | |
| SAR 10g [W/kg]: | | 4.343 | |



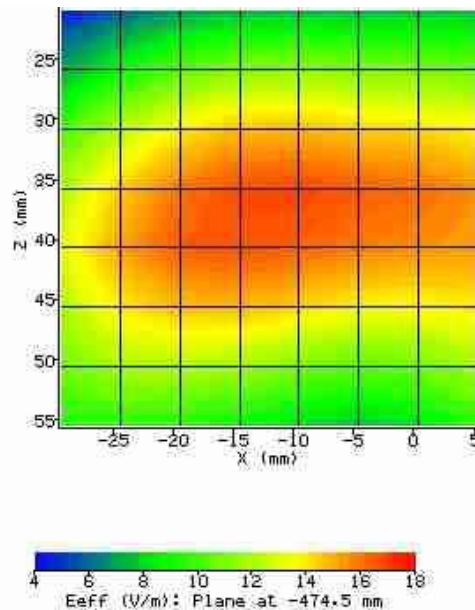
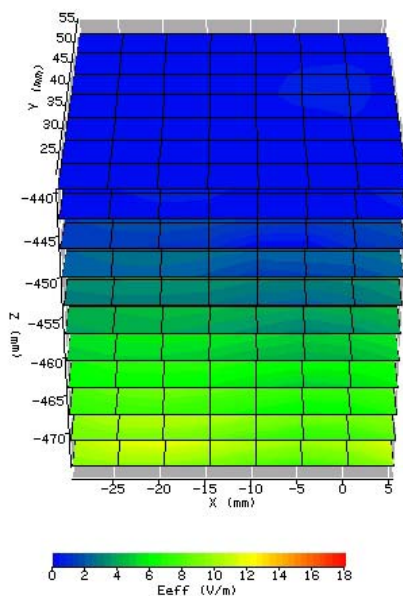


Test specification(s): FCC/CA SAR requirements
 Description of EUT: 2.4/5 GHz IEEE 802.11g/a WLAN Cardbus card
 Manufacturer: Agere Systems Nederland B.V.
 Brand mark: Agere
 Model: 1106
 FCC ID: IMR1106CB

8.2 Host: ACER.

8.2.1 Host ACER, Lapheld, channel 1.

| | | | |
|--------------------------------------|--------------|--|-----------|
| Device Under Test: | | Agere CB 1106 2.4/5 GHz IEEE 802.11g/a WLAN Cardbus card | |
| HOST | | ACER | |
| Position / Channel | | Lapheld / 1 | |
| DATE [dd/mm/yyyy] | | 17-6-2004 | |
| System / software: | | SARA v2.3 | |
| Phantom S/No: | Box phantom. | No. of steps x and y | 7 |
| Test Frequency [MHz] | 2412 | Stepsize x and y [mm] | 5 |
| Antenna Configuration: | Integral | No. of steps z | 10 |
| Power / (setting(s)) [dBm] | 21.4 | Stepsize z [mm] | 3.5 |
| Type of Modulation / bitrate[Mbit/s] | DSSS 11 | Dist probe tip – phantom shell [mm] | 5 |
| Modn. Duty Cycle [%] | 100 | Probe conversion factor | 0.54 |
| Probe Serial Number: | 131 | Probe battery check [dd/mm/yyyy]: | 17-6-2004 |
| Liquid Simulant: | Body | Max E-field [V/m in liquid] | 15.19 |
| Permittivity / Conductivity [S/m] | 52.8 / 1.9 | Location of max. X= [mm] | -0.25 |
| Liquid Temperature [C] | 22.5 | Location of max Y= [mm] | 33.25 |
| Ambient Temperature [C] | 23.0 | Location of max Z= [mm] | -474.5 |
| Relative Humidity [%] | 49 | SAR Drift: [dB] | 0.02 |
| Results: | | | |
| SAR 1g [W/kg]: | | 0.548 | |
| SAR 10g [W/kg]: | | 0.299 | |

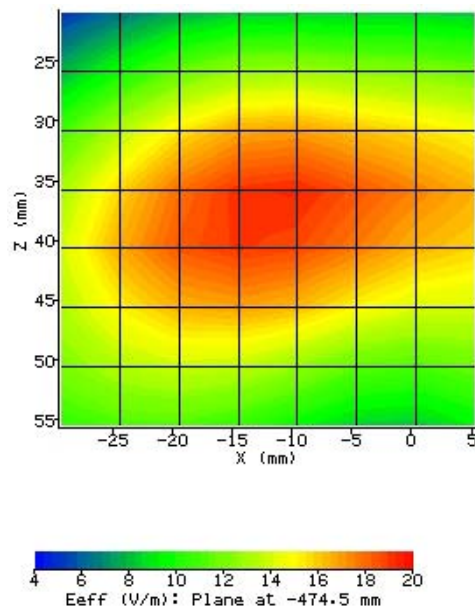
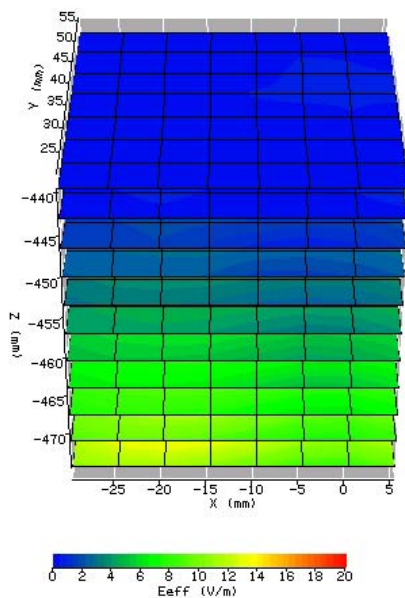




Test specification(s): FCC/CA SAR requirements
 Description of EUT: 2.4/5 GHz IEEE 802.11g/a WLAN Cardbus card
 Manufacturer: Agere Systems Nederland B.V.
 Brand mark: Agere
 Model: 1106
 FCC ID: IMR1106CB

8.2.2 Host ACER, Lapheld, channel 6.

| | | | |
|--------------------------------------|--------------|--|-----------|
| Device Under Test: | | Agere CB 1106 2.4/5 GHz IEEE 802.11g/a WLAN Cardbus card | |
| HOST | | ACER | |
| Position / Channel | | Lapheld / 6 | |
| DATE [dd/mm/yyyy] | | 18-6-2004 | |
| System / software: | | SARA v2.3 | |
| Phantom S/No: | Box phantom. | No. of steps x and y | 7 |
| Test Frequency [MHz] | 2437 | Stepsize x and y [mm] | 5 |
| Antenna Configuration: | Integral | No. of steps z | 10 |
| Power / (setting(s) [dBm] | 21.4 | Stepsize z [mm] | 3.5 |
| Type of Modulation / bitrate[Mbit/s] | OFDM 6 | Dist probe tip – phantom shell [mm] | 5 |
| Modn. Duty Cycle [%] | 100 | Probe conversion factor | 0.54 |
| Probe Serial Number: | 131 | Probe battery check [dd/mm/yyyy]: | 18-6-2004 |
| Liquid Simulant: | Body | Max E-field [V/m in liquid] | 21.4 |
| Permittivity / Conductivity [S/m] | 52.7 / 1.9 | Location of max. X= [mm] | -12.5 |
| Liquid Temperature [C] | 21.5 | Location of max Y= [mm] | 38.755 |
| Ambient Temperature [C] | 22.0 | Location of max Z= [mm] | -474.5 |
| Relative Humidity [%] | 50.0 | SAR Drift: [dB] | 0.02 |
| Results: | | | |
| SAR 1g [W/kg]: | | 0.891 | |
| SAR 10g [W/kg]: | | 0.480 | |

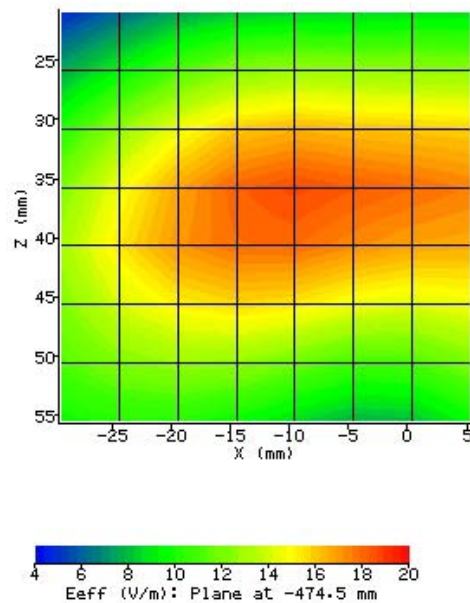
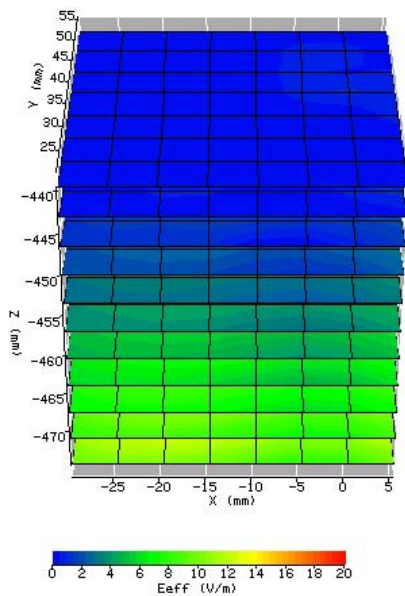




Test specification(s): FCC/CA SAR requirements
 Description of EUT: 2.4/5 GHz IEEE 802.11g/a WLAN Cardbus card
 Manufacturer: Agere Systems Nederland B.V.
 Brand mark: Agere
 Model: 1106
 FCC ID: IMR1106CB

8.2.3 Host ACER, Lapheld, channel 11.

| | | | |
|---------------------------------------|--------------|--|-----------|
| Device Under Test: | | Agere CB 1106 2.4/5 GHz IEEE 802.11g/a WLAN Cardbus card | |
| HOST | | ACER | |
| Position / Channel | | Lapheld / 11 | |
| DATE [dd/mm/yyyy] | | 18-6-2004 | |
| System / software: | | SARA v2.3 | |
| Phantom S/No: | Box phantom. | No. of steps x and y | 7 |
| Test Frequency [MHz] | 2462 | Stepsize x and y [mm] | 5 |
| Antenna Configuration: | Integral | No. of steps z | 10 |
| Power / (setting(s) [dBm] | 21.4 | Stepsize z [mm] | 3.5 |
| Type of Modulation / bitrate [Mbit/s] | DSSS 5.5 | Dist probe tip – phantom shell [mm] | 5 |
| Modn. Duty Cycle [%] | 100 | Probe conversion factor | 0.54 |
| Probe Serial Number: | 131 | Probe battery check [dd/mm/yyyy]: | 18-6-2004 |
| Liquid Simulant: | Body | Max E-field [V/m in liquid] | 18.8 |
| Permittivity / Conductivity [S/m] | 52.7 / 2.0 | Location of max X= [mm] | -9.5 |
| Liquid Temperature [C] | 21.5 | Location of max Y= [mm] | 39.25 |
| Ambient Temperature [C] | 22.0 | Location of max Z= [mm] | -474.5 |
| Relative Humidity [%] | 51.0 | SAR Drift: [dB] | 0.06 |
| Results: | | | |
| SAR 1g [W/kg]: | | 0.808 | |
| SAR 10g [W/kg]: | | 0.488 | |





Test specification(s): FCC/CA SAR requirements
 Description of EUT: 2.4/5 GHz IEEE 802.11g/a WLAN Cardbus card
 Manufacturer: Agere Systems Nederland B.V.
 Brand mark: Agere
 Model: 1106
 FCC ID: IMR1106CB

8.2.4 Host ACER, Lapheld, channel 36.

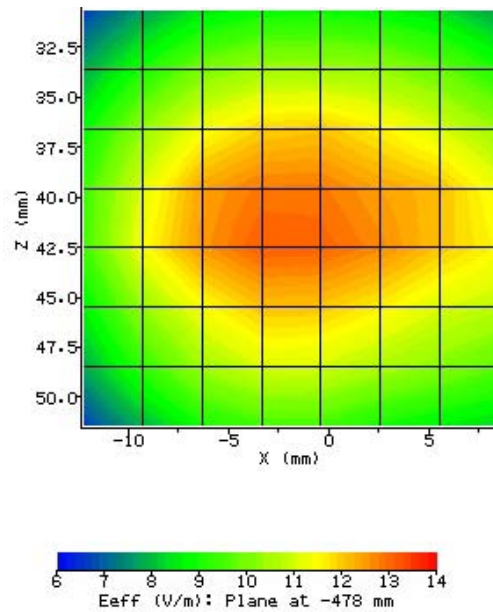
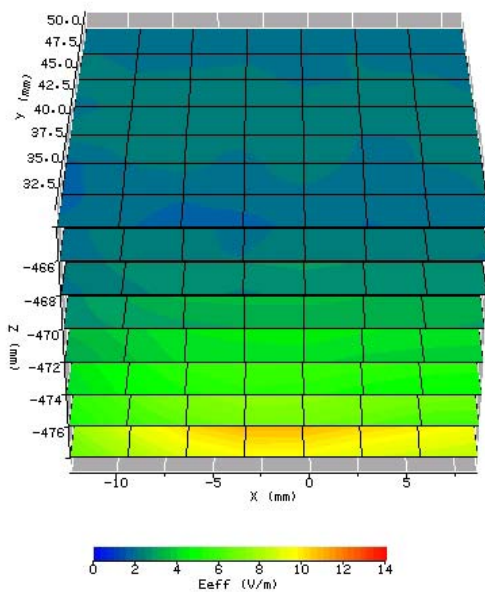
| | | | |
|--------------------------------------|--------------|--|-----------|
| Device Under Test: | | Agere CB 1106 2.4/5 GHz IEEE 802.11g/a WLAN Cardbus card | |
| HOST | | ACER | |
| Position / Channel | | Lapheld / 36 | |
| DATE [dd/mm/yyyy] | | 14-6-2004 | |
| System / software: | | SARA v2.3 | |
| Phantom S/No: | Box phantom. | No. of steps x and y | 7 |
| Test Frequency [MHz] | 5180 | Stepsize x and y [mm] | 3 |
| Antenna Configuration: | Integral | No. of steps z | 7 |
| Power / (setting(s) [dBm] | 17.4 | Stepsize z [mm] | 2 |
| Type of Modulation / bitrate[Mbit/s] | OFDM 6 | Dist probe tip – phantom shell [mm] | 2 |
| Modn. Duty Cycle [%] | 100 | Probe conversion factor | 0.870 |
| Probe Serial Number: | 131 | Probe battery check [dd/mm/yyyy]: | 14-6-2004 |
| Liquid Simulant: | Body | Max E-field [V/m in liquid] | 12.27 |
| Permittivity / Conductivity [S/m] | 49.0 / 5.3 | Location of max. X= [mm] | -17.4 |
| Liquid Temperature [C] | 21.5 | Location of max Y= [mm] | -9.7 |
| Ambient Temperature [C] | 22.0 | Location of max Z= [mm] | -479.0 |
| Relative Humidity [%] | 51.0 | SAR Drift: [dB] | -0.05 |
| Results: | | | |
| SAR 1g [W/kg]: | | 0.693 | |
| SAR 10g [W/kg]: | | 0.304 | |



Test specification(s): FCC/CA SAR requirements
 Description of EUT: 2.4/5 GHz IEEE 802.11g/a WLAN Cardbus card
 Manufacturer: Agere Systems Nederland B.V.
 Brand mark: Agere
 Model: 1106
 FCC ID: IMR1106CB

8.2.5 Host ACER, Lapheld, channel 48.

| | | | |
|--------------------------------------|--------------|--|-----------|
| Device Under Test: | | Agere CB 1106 2.4/5 GHz IEEE 802.11g/a WLAN Cardbus card | |
| HOST | | ACER | |
| Position / Channel | | Lapheld / 48 | |
| DATE [dd/mm/yyyy] | | 14-6-2004 | |
| System / software: | | SARA v2.3 | |
| Phantom S/No: | Box phantom. | No. of steps x and y | 7 |
| Test Frequency [MHz] | 5240 | Stepsize x and y [mm] | 3 |
| Antenna Configuration: | Integral | No. of steps z | 7 |
| Power / (setting(s) [dBm] | 19.0 | Stepsize z [mm] | 2 |
| Type of Modulation / bitrate[Mbit/s] | OFDM 6 | Dist probe tip – phantom shell [mm] | 2 |
| Modn. Duty Cycle [%] | 100 | Probe conversion factor | 0.870 |
| Probe Serial Number: | 131 | Probe battery check [dd/mm/yyyy]: | 14-6-2004 |
| Liquid Simulant: | Body | Max E-field [V/m in liquid] | 12.93 |
| Permittivity / Conductivity [S/m] | 49.0 / 5.3 | Location of max. X= [mm] | -2.7 |
| Liquid Temperature [C] | 20.0 | Location of max Y= [mm] | 40.5 |
| Ambient Temperature [C] | 21.0 | Location of max Z= [mm] | -478 |
| Relative Humidity [%] | 56.0 | SAR Drift: [dB] | -0.05 |
| Results: | | | |
| SAR 1g [W/kg]: | | 1.021 | |
| SAR 10g [W/kg]: | | 0.446 | |

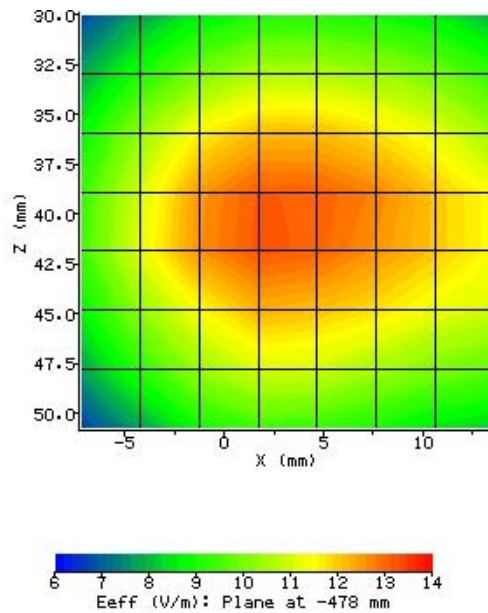
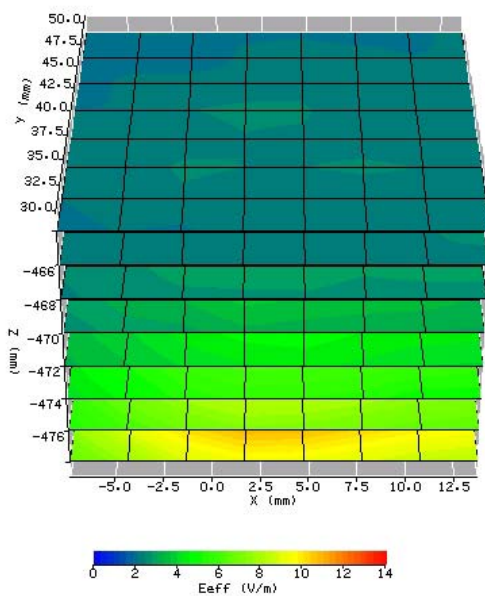




Test specification(s): FCC/CA SAR requirements
 Description of EUT: 2.4/5 GHz IEEE 802.11g/a WLAN Cardbus card
 Manufacturer: Agere Systems Nederland B.V.
 Brand mark: Agere
 Model: 1106
 FCC ID: IMR1106CB

8.2.6 Host ACER, Lapheld, channel 52.

| | | | |
|--------------------------------------|--------------|--|-----------|
| Device Under Test: | | Agere CB 1106 2.4/5 GHz IEEE 802.11g/a WLAN Cardbus card | |
| HOST | | ACER | |
| Position / Channel | | Lapheld / 52 | |
| DATE [dd/mm/yyyy] | | 14-6-2004 | |
| System / software: | | SARA v2.3 | |
| Phantom S/No: | Box phantom. | No. of steps x and y | 7 |
| Test Frequency [MHz] | 5260 | Stepsize x and y [mm] | 3 |
| Antenna Configuration: | Integral | No. of steps z | 7 |
| Power / (setting(s) [dBm] | 20.4 | Stepsize z [mm] | 2 |
| Type of Modulation / bitrate[Mbit/s] | OFDM 6 | Dist probe tip – phantom shell [mm] | 2 |
| Modn. Duty Cycle [%] | 100 | Probe conversion factor | 0.870 |
| Probe Serial Number: | 131 | Probe battery check [dd/mm/yyyy]: | 14-6-2004 |
| Liquid Simulant: | Body | Max E-field [V/m in liquid] | 13.07 |
| Permittivity / Conductivity [S/m] | 48.9 / 5.3 | Location of max. X= [mm] | 2.9 |
| Liquid Temperature [C] | 20.0 | Location of max Y= [mm] | 40.4 |
| Ambient Temperature [C] | 21.0 | Location of max Z= [mm] | -478 |
| Relative Humidity [%] | 56.0 | SAR Drift: [dB] | -0.23 |
| Results: | | | |
| SAR 1g [W/kg]: | | 0.956 | |
| SAR 10g [W/kg]: | | 0.416 | |

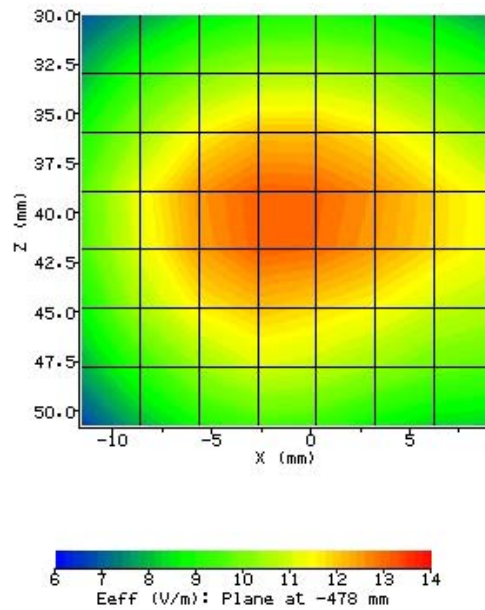
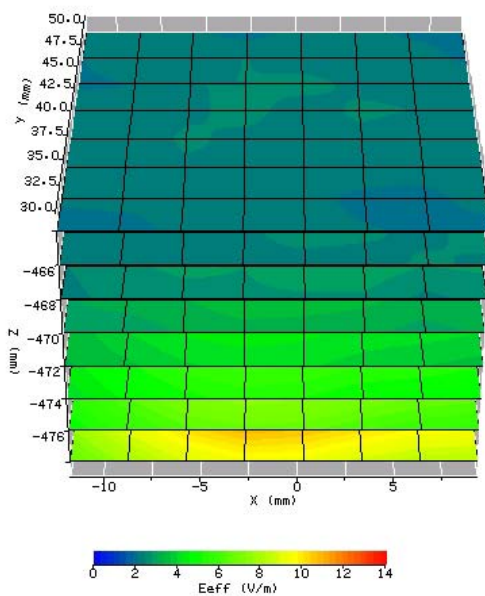




Test specification(s): FCC/CA SAR requirements
 Description of EUT: 2.4/5 GHz IEEE 802.11g/a WLAN Cardbus card
 Manufacturer: Agere Systems Nederland B.V.
 Brand mark: Agere
 Model: 1106
 FCC ID: IMR1106CB

8.2.7 Host ACER, Lapheld, channel 64.

| | | | |
|--------------------------------------|--------------|--|-----------|
| Device Under Test: | | Agere CB 1106 2.4/5 GHz IEEE 802.11g/a WLAN Cardbus card | |
| HOST | | ACER | |
| Position / Channel | | Lapheld / 64 | |
| DATE [dd/mm/yyyy] | | 15-6-2004 | |
| System / software: | | SARA v2.3 | |
| Phantom S/No: | Box phantom. | No. of steps x and y | 7 |
| Test Frequency [MHz] | 5320 | Stepsize x and y [mm] | 3 |
| Antenna Configuration: | Integral | No. of steps z | 7 |
| Power / (setting(s) [dBm] | 17.9 | Stepsize z [mm] | 2 |
| Type of Modulation / bitrate[Mbit/s] | OFDM 6 | Dist probe tip – phantom shell [mm] | 2 |
| Modn. Duty Cycle [%] | 100 | Probe conversion factor | 0.870 |
| Probe Serial Number: | 131 | Probe battery check [dd/mm/yyyy]: | 15-6-2004 |
| Liquid Simulant: | Body | Max E-field [V/m in liquid] | 11.00 |
| Permittivity / Conductivity [S/m] | 48.9 / 5.4 | Location of max. X= [mm] | -3.0 |
| Liquid Temperature [C] | 21.0 | Location of max Y= [mm] | 40.0 |
| Ambient Temperature [C] | 22.0 | Location of max Z= [mm] | -478.0 |
| Relative Humidity [%] | 56.0 | SAR Drift: [dB] | 0 |
| Results: | | | |
| SAR 1g [W/kg]: | | 0.652 | |
| SAR 10g [W/kg]: | | 0.282 | |

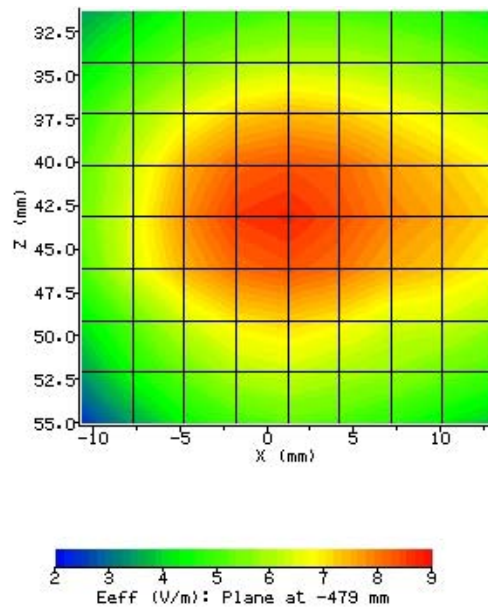
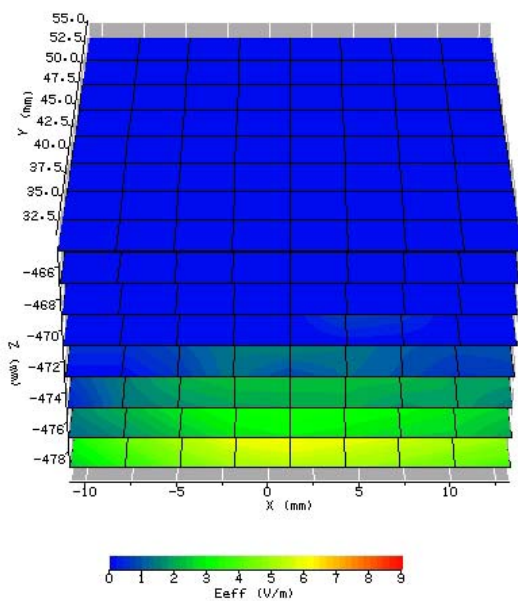




Test specification(s): FCC/CA SAR requirements
 Description of EUT: 2.4/5 GHz IEEE 802.11g/a WLAN Cardbus card
 Manufacturer: Agere Systems Nederland B.V.
 Brand mark: Agere
 Model: 1106
 FCC ID: IMR1106CB

8.2.8 Host ACER, Lapheld, channel 165.

| | | | |
|--------------------------------------|--------------|--|-----------|
| Device Under Test: | | Agere CB 1106 2.4/5 GHz IEEE 802.11g/a WLAN Cardbus card | |
| HOST | | ACER | |
| Position / Channel | | Lapheld / 165 | |
| DATE [dd/mm/yyyy] | | 15-6-2004 | |
| System / software: | | SARA v2.3 | |
| Phantom S/No: | Box phantom. | No. of steps x and y | 8 |
| Test Frequency [MHz] | 5825 | Stepsize x and y [mm] | 3 |
| Antenna Configuration: | Integral | No. of steps z | 7 |
| Power / (setting(s) [dBm] | 17.2 | Stepsize z [mm] | 2 |
| Type of Modulation / bitrate[Mbit/s] | OFDM 6 | Dist probe tip – phantom shell [mm] | 1 |
| Modn. Duty Cycle [%] | 100 | Probe conversion factor | 0.750 |
| Probe Serial Number: | 131 | Probe battery check [dd/mm/yyyy]: | 14-6-2004 |
| Liquid Simulant: | Body | Max E-field [V/m in liquid] | 8.53 |
| Permittivity / Conductivity [S/m] | 48.2 / 6.0 | Location of max. X= [mm] | 0.6 |
| Liquid Temperature [C] | 21.0 | Location of max Y= [mm] | 43.2 |
| Ambient Temperature [C] | 22.0 | Location of max Z= [mm] | -479.0 |
| Relative Humidity [%] | 58.0 | SAR Drift: [dB] | -0.93 |
| Results: | | | |
| SAR 1g [W/kg]: | | 0.529 | |
| SAR 10g [W/kg]: | | 0.212 | |

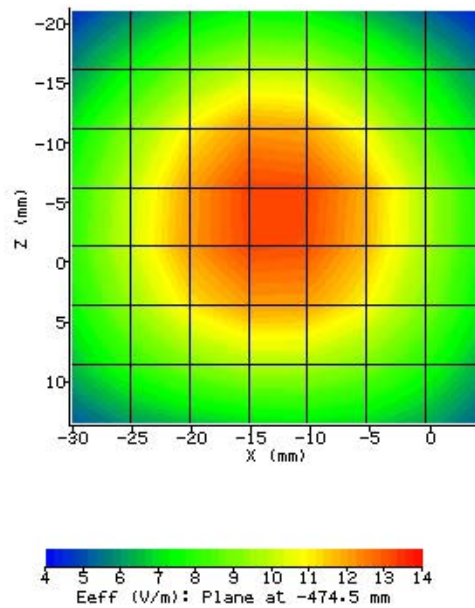
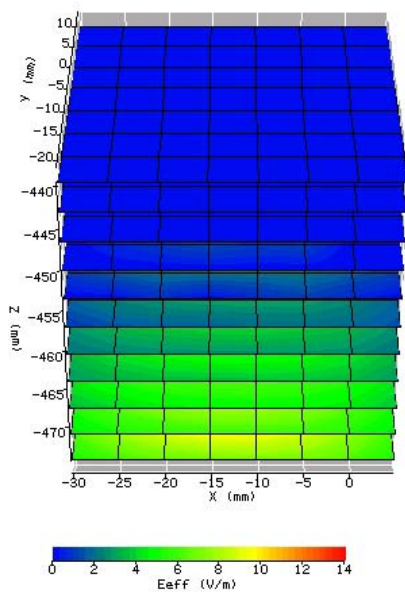




Test specification(s): FCC/CA SAR requirements
 Description of EUT: 2.4/5 GHz IEEE 802.11g/a WLAN Cardbus card
 Manufacturer: Agere Systems Nederland B.V.
 Brand mark: Agere
 Model: 1106
 FCC ID: IMR1106CB

8.2.9 Host ACER, Perpendicular + 10 mm, channel 6.

| | | | |
|---------------------------------------|--------------|--|-----------|
| Device Under Test: | | Agere CB 1106 2.4/5 GHz IEEE 802.11g/a WLAN Cardbus card | |
| HOST | | ACER | |
| Position / Channel | | perpendicular / channel 6 | |
| DATE [dd/mm/yyyy] | | 18-6-2004 | |
| System / software: | | SARA v2.3 | |
| Phantom S/No: | Box phantom. | No. of steps x and y | 7 |
| Test Frequency [MHz] | 2437 | Stepsize x and y [mm] | 5 |
| Antenna Configuration: | Integral | No. of steps z | 10 |
| Power / (setting(s) [dBm] | 21.4 | Stepsize z [mm] | 3.5 |
| Type of Modulation / bitrate [Mbit/s] | OFDM 6 | Dist probe tip – phantom shell [mm] | 5 |
| Modn. Duty Cycle [%] | 100 | Probe conversion factor | 0.54 |
| Probe Serial Number: | 131 | Probe battery check [dd/mm/yyyy]: | 18-6-2004 |
| Liquid Simulant: | Body | Max E-field [V/m in liquid] | 13.12 |
| Permittivity / Conductivity [S/m] | 52.7 / 1.9 | Location of max. X= [mm] | -13.25 |
| Liquid Temperature [C] | 21.5 | Location of max Y= [mm] | -3.25 |
| Ambient Temperature [C] | 22.0 | Location of max Z= [mm] | -475.5 |
| Relative Humidity [%] | 54.0 | SAR Drift: [dB] | 0.18 |
| Results: | | | |
| SAR 1g [W/kg]: | | 0.436 | |
| SAR 10g [W/kg]: | | 0.239 | |





Test specification(s): FCC/CA SAR requirements
 Description of EUT: 2.4/5 GHz IEEE 802.11g/a WLAN Cardbus card
 Manufacturer: Agere Systems Nederland B.V.
 Brand mark: Agere
 Model: 1106
 FCC ID: IMR1106CB

8.2.10 Host ACER, Perpendicular + 10 mm, channel 52.

| | | | |
|------------------------------|------------------|--|-------------------------|
| Device Under Test: | | Agere CB 1106 2.4/5 GHz IEEE 802.11g/a WLAN Cardbus card | |
| HOST | | ACER | |
| Position / Channel | | perpendicular / channel 52 | |
| DATE | [dd/mm/yyyy] | 15-6-2004 | |
| System / software: | | SARA v2.3 | |
| Phantom S/No: | Box phantom. | No. of steps x and y | 7 |
| Test Frequency | [MHz] 5260 | Stepsize x and y | [mm] 3 |
| Antenna Configuration: | Integral | No. of steps z | 7 |
| Power / (setting(s)) | [dBm] 20.4 | Stepsize z | [mm] 2 |
| Type of Modulation / bitrate | [Mbit/s] OFDM 6 | Dist probe tip – phantom shell | [mm] 2 |
| Modn. Duty Cycle | [%] 100 | Probe conversion factor | 0.870 |
| Probe Serial Number: | 131 | Probe battery check | [dd/mm/yyyy]: 14-6-2004 |
| Liquid Simulant: | Body | Max E-field | [V/m in liquid] 12.2 |
| Permittivity / Conductivity | [S/m] 49.0 / 5.4 | Location of max X= | [mm] -0.3 |
| Liquid Temperature | [C] 22.5 | Location of max Y= | [mm] 0.5 |
| Ambient Temperature | [C] 23.0 | Location of max Z= | [mm] -478.0 |
| Relative Humidity | [%] 57.0 | SAR Drift: | [dB] 0.09 |
| Results: | | | |
| SAR 1g [W/kg]: | | 0.713 | |
| SAR 10g [W/kg]: | | 0.299 | |

