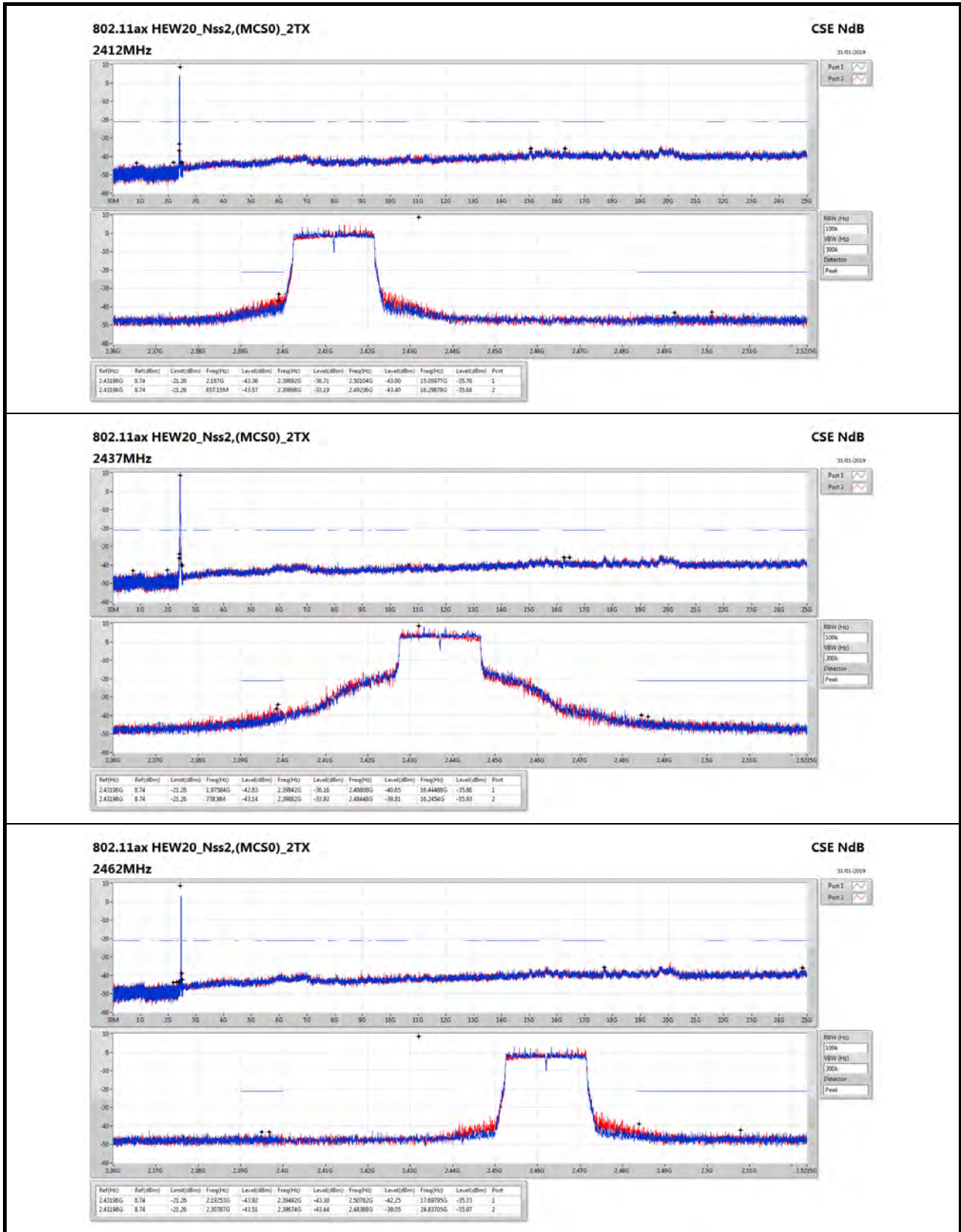
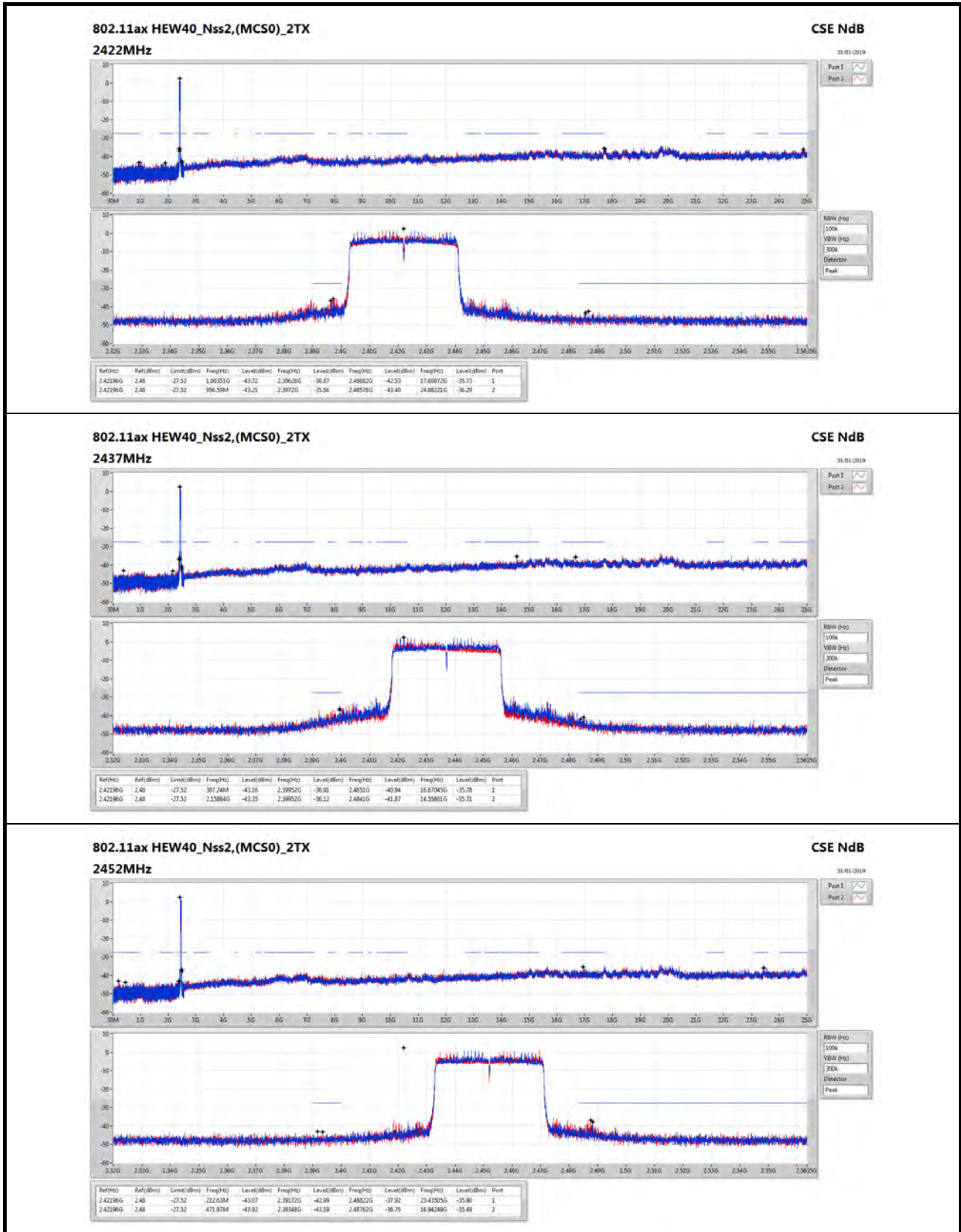




## CSE Non-restricted Band Result

Appendix E.7


**802.11ax HEW20\_Nss2,(MCS0)\_2TX**
**CSE NdB**
31.01.2019
Port 1  
Port 2


**802.11ax HEW40\_Nss2,(MCS0)\_2TX**
**CSE NdB**
31.01.2019
Port 1  
Port 2

Ref(Freq)	Ref(Limit)	Limit(dBm)	Freq(Hz)	Level(dBm)	Freq(Hz)	Level(dBm)	Freq(Hz)	Level(dBm)	Freq(Hz)	Level(dBm)	Port
2421960	2.48	-27.52	232.6384	-43.07	2.391720	-42.99	2.482220	-37.92	23.435050	-35.90	1
2421960	2.48	-27.52	471.9784	-43.92	2.393480	-43.19	2.487620	-36.76	16.942490	-35.49	2

RBW (Hz): 100k  
 VBW (Hz): 300k  
 Detector: Peak



## CSE Non-restricted Band Result

Appendix E.8

### For Non-beamforming / 4T1S mode Summary

Mode	Result	Ref (Hz)	Ref (dBm)	Limit (dBm)	Freq (Hz)	Level (dBm)	Freq (Hz)	Level (dBm)	Freq (Hz)	Level (dBm)	Freq (Hz)	Level (dBm)	Port
2.4-2.4835GHz	-	-	-	-	-	-	-	-	-	-	-	-	-
802.11b_Nss1,(1Mbps)_4TX	Pass	2.43749G	14.88	-5.12	1.78857G	-43.82	2.39998G	-31.19	2.48932G	-42.64	15.04572G	-35.21	4
802.11g_Nss1,(6Mbps)_4TX	Pass	2.43077G	8.49	-11.51	143.01M	-43.88	2.39246G	-38.79	2.48424G	-42.31	17.68671G	-33.48	1
802.11ax HEW20_Nss1,(MCS0)_4TX	Pass	2.43574G	6.63	-13.37	2.11797G	-42.78	2.39884G	-32.30	2.50194G	-43.03	16.26507G	-35.10	1
802.11ax HEW40_Nss1,(MCS0)_4TX	Pass	2.42948G	1.54	-18.46	736.47M	-43.70	2.3948G	-38.78	2.53082G	-42.77	17.69972G	-34.91	1

### Result

Mode	Result	Ref (Hz)	Ref (dBm)	Limit (dBm)	Freq (Hz)	Level (dBm)	Freq (Hz)	Level (dBm)	Freq (Hz)	Level (dBm)	Freq (Hz)	Level (dBm)	Port
802.11b_Nss1,(1Mbps)_4TX	-	-	-	-	-	-	-	-	-	-	-	-	-
2412MHz	Pass	2.43749G	14.88	-5.12	728.42M	-44.02	2.39994G	-32.39	2.49848G	-42.52	17.69233G	-34.46	1
2412MHz	Pass	2.43749G	14.88	-5.12	567.07M	-43.67	2.39998G	-33.19	2.48538G	-43.34	17.68952G	-35.53	2
2412MHz	Pass	2.43749G	14.88	-5.12	918.02M	-42.81	2.39998G	-32.41	2.48634G	-42.82	15.32949G	-35.55	3
2412MHz	Pass	2.43749G	14.88	-5.12	1.78857G	-43.82	2.39998G	-31.19	2.48932G	-42.64	15.04572G	-35.21	4
2437MHz	Pass	2.43749G	14.88	-5.12	485.52M	-43.67	2.3959G	-42.37	2.49282G	-41.42	15.25644G	-35.52	1
2437MHz	Pass	2.43749G	14.88	-5.12	1.78944G	-43.27	2.39596G	-42.99	2.48852G	-42.33	16.29317G	-36.00	2
2437MHz	Pass	2.43749G	14.88	-5.12	635.22M	-43.39	2.39932G	-42.94	2.484G	-40.14	15.03167G	-35.36	3
2437MHz	Pass	2.43749G	14.88	-5.12	1.9339G	-43.63	2.3937G	-41.70	2.48878G	-41.75	15.02886G	-34.98	4
2462MHz	Pass	2.43749G	14.88	-5.12	955.01M	-43.83	2.39722G	-42.94	2.48448G	-41.91	16.91127G	-35.72	1
2462MHz	Pass	2.43749G	14.88	-5.12	1.9205G	-43.93	2.39652G	-43.54	2.48458G	-41.32	15.1272G	-35.66	2
2462MHz	Pass	2.43749G	14.88	-5.12	863.27M	-43.23	2.39846G	-43.95	2.48458G	-40.69	24.941G	-34.21	3
2462MHz	Pass	2.43749G	14.88	-5.12	835.6M	-43.69	2.39452G	-42.99	2.48612G	-41.61	17.69233G	-35.67	4
802.11g_Nss1,(6Mbps)_4TX	-	-	-	-	-	-	-	-	-	-	-	-	-
2412MHz	Pass	2.43077G	8.49	-11.51	233M	-43.50	2.39846G	-41.47	2.49266G	-43.30	15.27891G	-34.68	1
2412MHz	Pass	2.43077G	8.49	-11.51	1.92167G	-43.69	2.3992G	-38.46	2.51062G	-43.00	15.07663G	-36.08	2
2412MHz	Pass	2.43077G	8.49	-11.51	928.51M	-42.98	2.39954G	-39.25	2.50682G	-43.14	15.05696G	-35.31	3
2412MHz	Pass	2.43077G	8.49	-11.51	864.72M	-43.76	2.39984G	-38.85	2.51442G	-43.42	16.27912G	-35.43	4
2437MHz	Pass	2.43077G	8.49	-11.51	143.01M	-43.88	2.39246G	-38.79	2.48424G	-42.31	17.68671G	-33.48	1
2437MHz	Pass	2.43077G	8.49	-11.51	2.15583G	-43.20	2.39336G	-39.06	2.485G	-41.69	17.69233G	-35.60	2
2437MHz	Pass	2.43077G	8.49	-11.51	2.09758G	-42.16	2.39952G	-37.08	2.49108G	-41.51	17.68109G	-35.71	3
2437MHz	Pass	2.43077G	8.49	-11.51	2.04283G	-43.26	2.3922G	-38.67	2.48354G	-41.48	16.28755G	-35.34	4
2462MHz	Pass	2.43077G	8.49	-11.51	2.10836G	-43.69	2.39956G	-42.72	2.51912G	-42.78	16.25664G	-35.56	1
2462MHz	Pass	2.43077G	8.49	-11.51	1.90303G	-43.55	2.3922G	-43.80	2.50134G	-41.88	24.93257G	-35.65	2
2462MHz	Pass	2.43077G	8.49	-11.51	696.09M	-43.63	2.39294G	-43.60	2.4838G	-41.70	15.05696G	-34.69	3
2462MHz	Pass	2.43077G	8.49	-11.51	2.06467G	-44.11	2.39816G	-43.58	2.50576G	-42.94	15.09629G	-35.45	4
802.11ax HEW20_Nss1,(MCS0)_4TX	-	-	-	-	-	-	-	-	-	-	-	-	-
2412MHz	Pass	2.43574G	6.63	-13.37	2.11797G	-42.78	2.39884G	-32.30	2.50194G	-43.03	16.26507G	-35.10	1
2412MHz	Pass	2.43574G	6.63	-13.37	662.6M	-43.58	2.39802G	-34.39	2.49054G	-42.93	24.82862G	-35.82	2
2412MHz	Pass	2.43574G	6.63	-13.37	1.65954G	-43.05	2.39844G	-34.13	2.50678G	-43.42	15.06539G	-35.49	3
2412MHz	Pass	2.43574G	6.63	-13.37	793.95M	-43.53	2.39946G	-34.68	2.49102G	-43.40	15.04572G	-35.63	4
2437MHz	Pass	2.43574G	6.63	-13.37	421.15M	-43.73	2.39918G	-41.60	2.4951G	-42.57	16.26226G	-35.57	1
2437MHz	Pass	2.43574G	6.63	-13.37	927.63M	-42.93	2.39848G	-39.96	2.49232G	-42.72	15.00639G	-35.51	2
2437MHz	Pass	2.43574G	6.63	-13.37	945.11M	-43.59	2.3993G	-40.90	2.49304G	-41.91	15.08505G	-34.94	3
2437MHz	Pass	2.43574G	6.63	-13.37	1.75012G	-43.09	2.3979G	-41.15	2.5004G	-42.87	23.49969G	-35.88	4
2462MHz	Pass	2.43574G	6.63	-13.37	228.34M	-44.05	2.39318G	-44.53	2.5226G	-42.81	15.24801G	-35.58	1
2462MHz	Pass	2.43574G	6.63	-13.37	957.92M	-42.96	2.39732G	-44.42	2.49426G	-43.00	16.3325G	-35.48	2



**CSE Non-restricted Band Result**

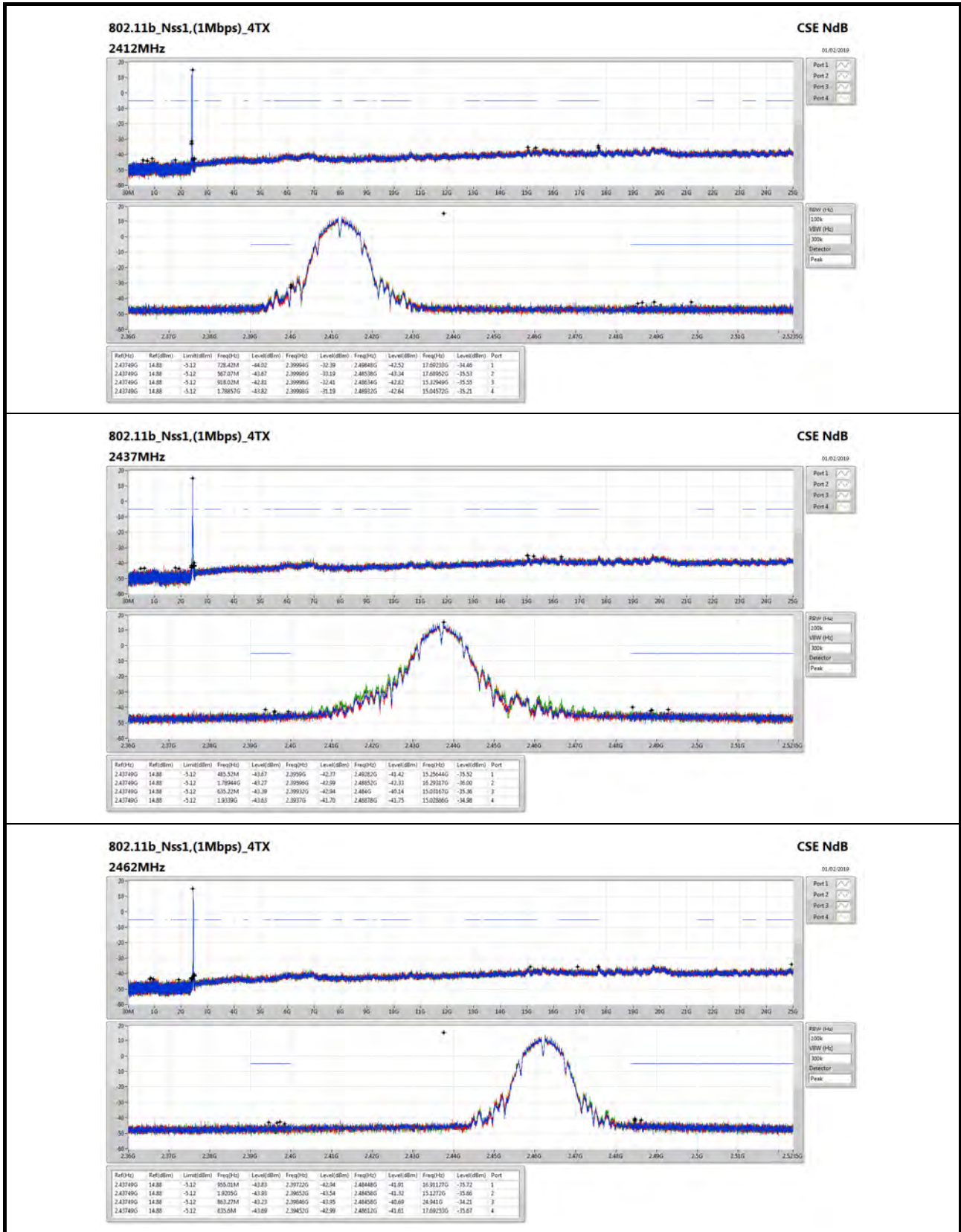
Appendix E.8

Mode	Result	Ref (Hz)	Ref (dBm)	Limit (dBm)	Freq (Hz)	Level (dBm)	Freq (Hz)	Level (dBm)	Freq (Hz)	Level (dBm)	Freq (Hz)	Level (dBm)	Port
2462MHz	Pass	2.43574G	6.63	-13.37	2.11972G	-43.09	2.39776G	-43.90	2.49496G	-42.73	15.02886G	-35.58	3
2462MHz	Pass	2.43574G	6.63	-13.37	718.22M	-43.89	2.39732G	-43.51	2.50742G	-43.16	16.31002G	-35.75	4
802.11ax HEW40_Nss1,(MCS0)_4TX	-	-	-	-	-	-	-	-	-	-	-	-	-
2422MHz	Pass	2.42948G	1.54	-18.46	736.47M	-43.70	2.3948G	-38.78	2.53082G	-42.77	17.69972G	-34.91	1
2422MHz	Pass	2.42948G	1.54	-18.46	2.15369G	-43.66	2.39472G	-42.27	2.52426G	-43.28	24.41104G	-35.28	2
2422MHz	Pass	2.42948G	1.54	-18.46	2.08814G	-43.41	2.39908G	-37.82	2.54906G	-42.95	24.89904G	-35.85	3
2422MHz	Pass	2.42948G	1.54	-18.46	432.75M	-43.76	2.39776G	-38.89	2.50138G	-43.31	15.0438G	-35.89	4
2437MHz	Pass	2.42948G	1.54	-18.46	1.83824G	-43.14	2.39796G	-39.47	2.48486G	-42.63	24.48116G	-36.20	1
2437MHz	Pass	2.42948G	1.54	-18.46	923.39M	-43.56	2.39644G	-40.25	2.49622G	-42.47	16.24696G	-35.79	2
2437MHz	Pass	2.42948G	1.54	-18.46	2.10417G	-43.13	2.39804G	-38.33	2.4883G	-41.93	15.0438G	-35.84	3
2437MHz	Pass	2.42948G	1.54	-18.46	885.89M	-42.54	2.39948G	-39.25	2.4937G	-43.26	15.05222G	-35.23	4
2452MHz	Pass	2.42948G	1.54	-18.46	1.92412G	-43.24	2.39944G	-43.13	2.48418G	-43.02	17.69692G	-35.48	1
2452MHz	Pass	2.42948G	1.54	-18.46	726.73M	-42.90	2.39016G	-43.71	2.50302G	-42.80	24.8794G	-35.25	2
2452MHz	Pass	2.42948G	1.54	-18.46	1.89893G	-43.45	2.39096G	-41.22	2.48386G	-41.84	16.95651G	-35.59	3
2452MHz	Pass	2.42948G	1.54	-18.46	552.98M	-43.65	2.39612G	-43.83	2.49434G	-42.29	24.93269G	-35.59	4





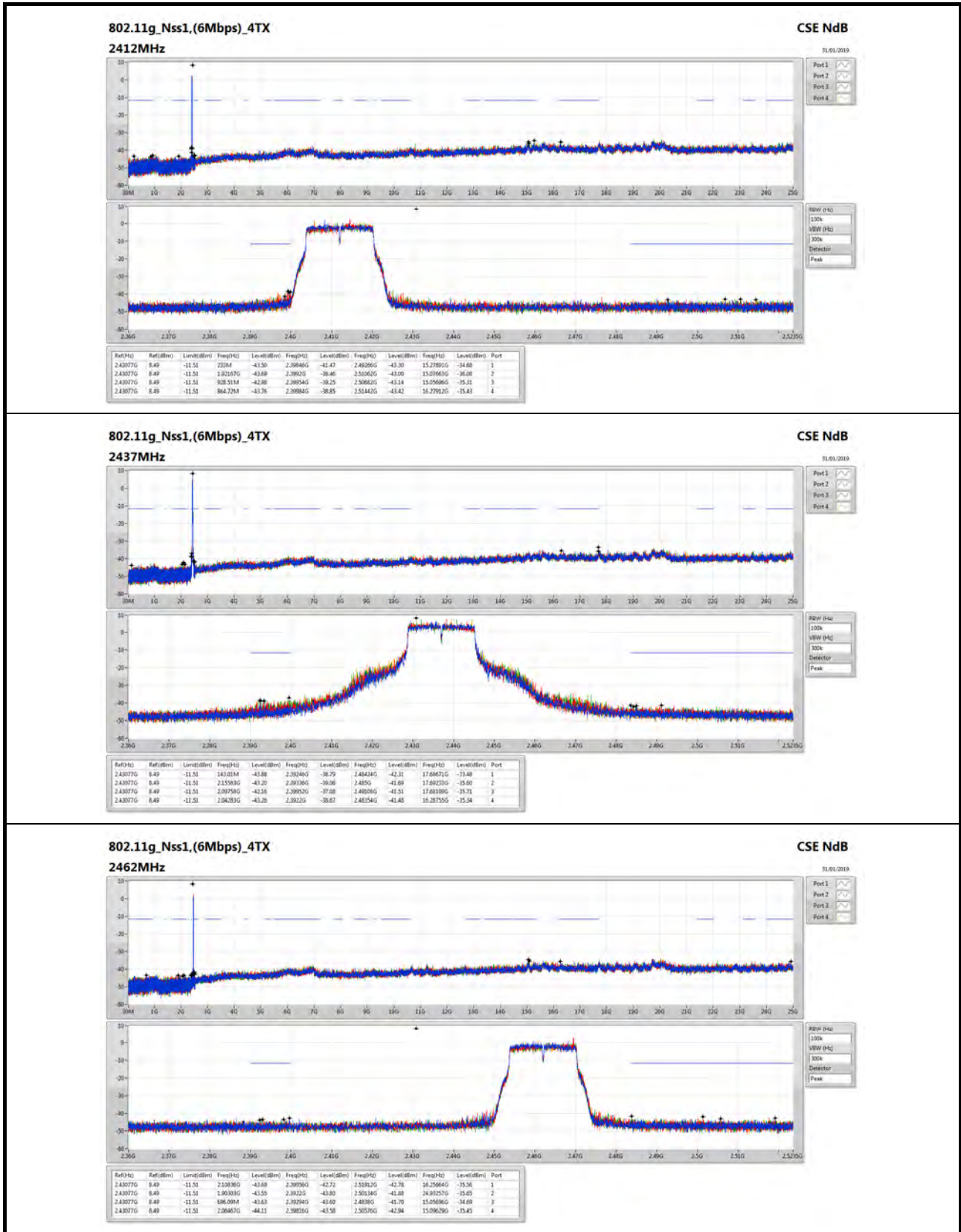
# CSE Non-restricted Band Result





# CSE Non-restricted Band Result

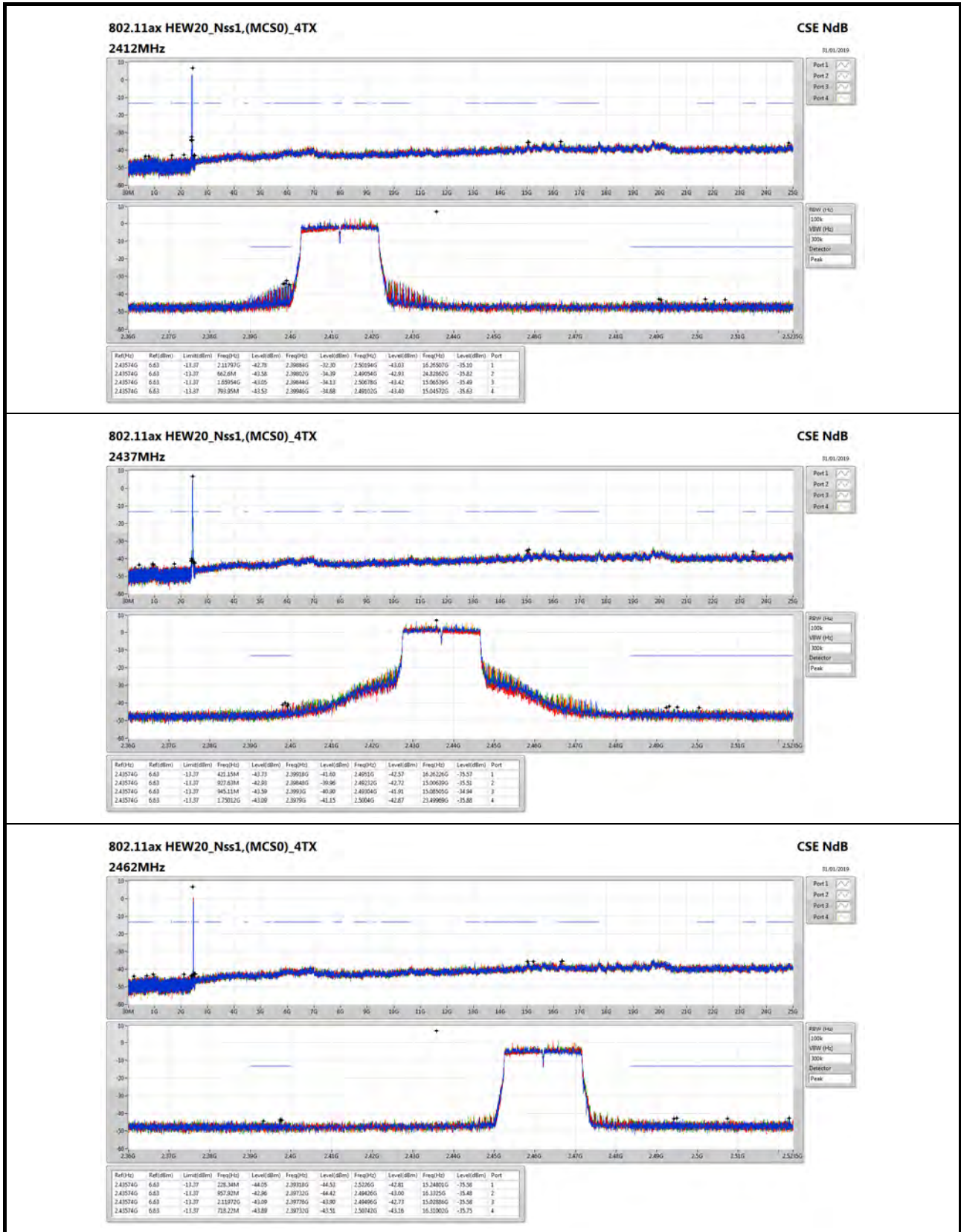
Appendix E.8





# CSE Non-restricted Band Result

Appendix E.8

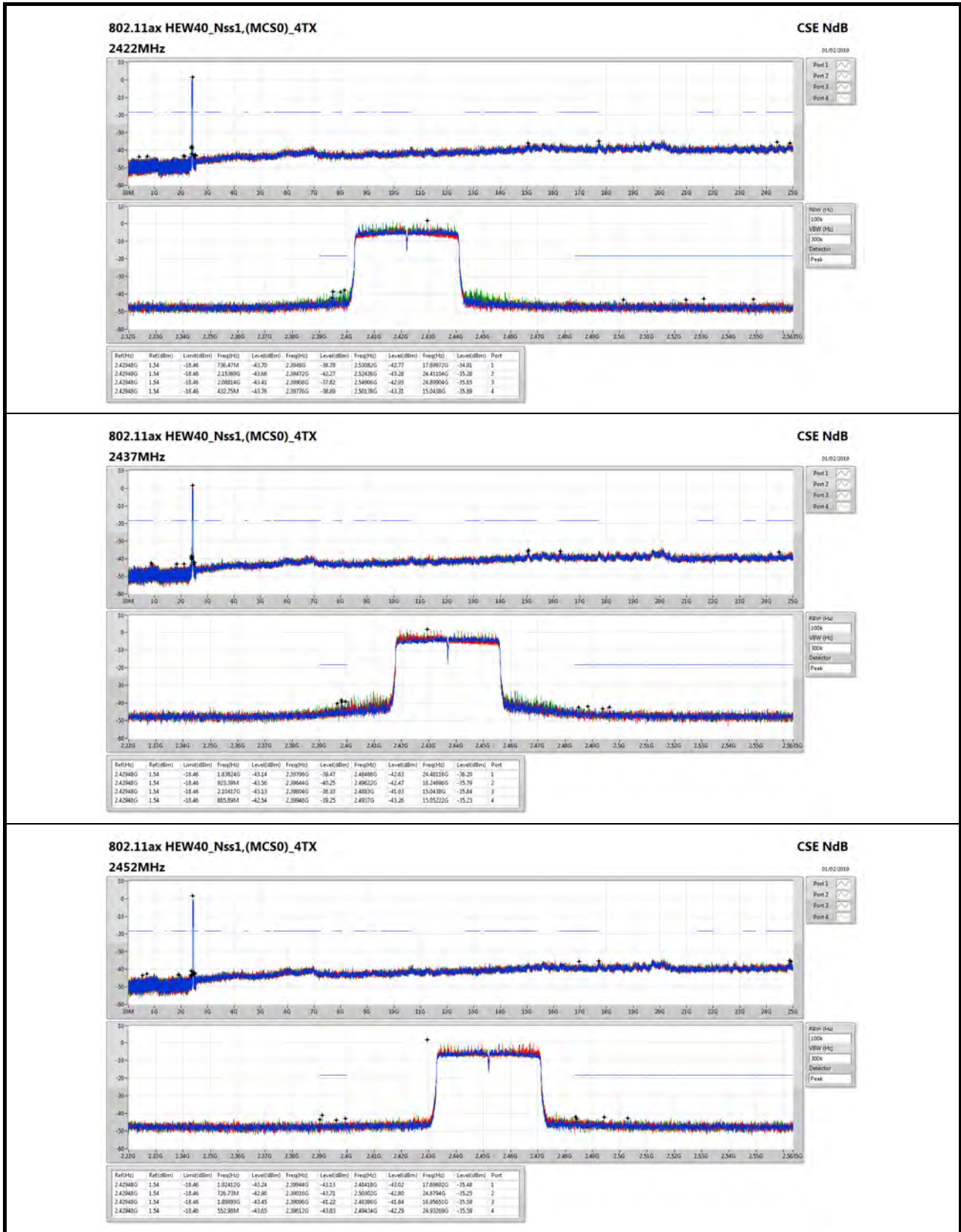






# CSE Non-restricted Band Result

Appendix E.8


**802.11ax HEW40\_Nss1,(MCS0)\_4TX**
**CSE NdB**
**2452MHz**

01.02.2019

Port 1  
 Port 2  
 Port 3  
 Port 4

Row (Hz)  
 100k  
 View (Hz)  
 300k  
 Detector  
 Peak





## CSE Non-restricted Band Result

Appendix E.9

### For Beamforming / 4T1S mode Summary

Mode	Result	Ref (Hz)	Ref (dBm)	Limit (dBm)	Freq (Hz)	Level (dBm)	Freq (Hz)	Level (dBm)	Freq (Hz)	Level (dBm)	Freq (Hz)	Level (dBm)	Port
2.4-2.4835GHz	-	-	-	-	-	-	-	-	-	-	-	-	-
802.11ax HEW20-BF_Nss1,(MCS0)_4TX	Pass	2.442G	8.00	-12.00	1.92749G	-43.15	2.39856G	-28.70	2.48726G	-43.49	15.01481G	-35.87	4
802.11ax HEW40-BF_Nss1,(MCS0)_4TX	Pass	2.42071G	2.22	-17.78	955.73M	-42.69	2.3998G	-31.15	2.48698G	-40.35	17.69131G	-35.51	4

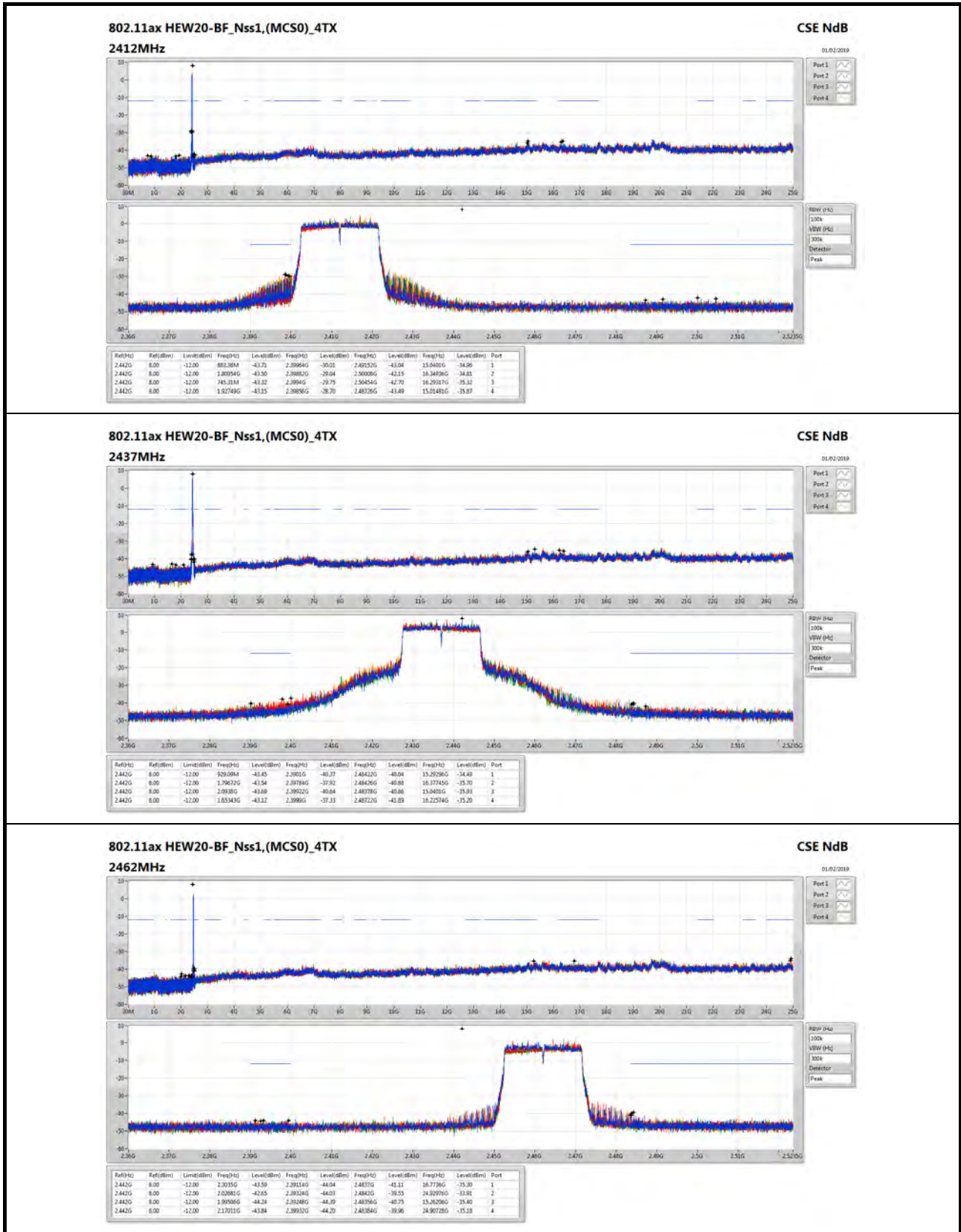
### Result

Mode	Result	Ref (Hz)	Ref (dBm)	Limit (dBm)	Freq (Hz)	Level (dBm)	Freq (Hz)	Level (dBm)	Freq (Hz)	Level (dBm)	Freq (Hz)	Level (dBm)	Port
802.11ax HEW20-BF_Nss1,(MCS0)_4TX	-	-	-	-	-	-	-	-	-	-	-	-	-
2412MHz	Pass	2.442G	8.00	-12.00	883.36M	-43.71	2.39964G	-30.01	2.49152G	-43.04	15.0401G	-34.96	1
2412MHz	Pass	2.442G	8.00	-12.00	1.80954G	-43.50	2.39882G	-29.04	2.50008G	-42.15	16.34936G	-34.81	2
2412MHz	Pass	2.442G	8.00	-12.00	745.31M	-43.32	2.3994G	-29.75	2.50454G	-42.70	16.29317G	-35.32	3
2412MHz	Pass	2.442G	8.00	-12.00	1.92749G	-43.15	2.39856G	-28.70	2.48726G	-43.49	15.01481G	-35.87	4
2437MHz	Pass	2.442G	8.00	-12.00	929.09M	-43.45	2.3901G	-40.37	2.48422G	-40.04	15.29296G	-34.49	1
2437MHz	Pass	2.442G	8.00	-12.00	1.79672G	-43.54	2.39784G	-37.92	2.48426G	-40.88	16.37745G	-35.70	2
2437MHz	Pass	2.442G	8.00	-12.00	2.0938G	-43.69	2.39922G	-40.64	2.48378G	-40.86	15.0401G	-35.93	3
2437MHz	Pass	2.442G	8.00	-12.00	1.65343G	-43.12	2.3999G	-37.33	2.48722G	-41.89	16.22574G	-35.20	4
2462MHz	Pass	2.442G	8.00	-12.00	2.3035G	-43.59	2.39114G	-44.04	2.4837G	-41.11	16.7736G	-35.30	1
2462MHz	Pass	2.442G	8.00	-12.00	2.02681G	-42.65	2.39324G	-44.03	2.4842G	-39.55	24.92976G	-33.91	2
2462MHz	Pass	2.442G	8.00	-12.00	1.99506G	-44.24	2.39248G	-44.39	2.48356G	-40.75	15.26206G	-35.40	3
2462MHz	Pass	2.442G	8.00	-12.00	2.17011G	-43.84	2.39932G	-44.20	2.48384G	-39.96	24.90728G	-35.18	4
802.11ax HEW40-BF_Nss1,(MCS0)_4TX	-	-	-	-	-	-	-	-	-	-	-	-	-
2422MHz	Pass	2.42071G	2.22	-17.78	763.66M	-43.39	2.39544G	-40.32	2.50302G	-43.60	24.89343G	-34.29	1
2422MHz	Pass	2.42071G	2.22	-17.78	2.09529G	-43.09	2.39808G	-41.67	2.53182G	-42.05	15.03539G	-35.07	2
2422MHz	Pass	2.42071G	2.22	-17.78	1.80962G	-43.78	2.39476G	-40.82	2.49486G	-42.76	17.69692G	-35.62	3
2422MHz	Pass	2.42071G	2.22	-17.78	169.12M	-43.21	2.39676G	-38.50	2.5439G	-43.10	24.86538G	-35.97	4
2437MHz	Pass	2.42071G	2.22	-17.78	2.166G	-43.07	2.39864G	-36.84	2.50418G	-41.82	17.68009G	-35.44	1
2437MHz	Pass	2.42071G	2.22	-17.78	918.81M	-43.55	2.39924G	-35.89	2.5109G	-42.44	15.06624G	-35.02	2
2437MHz	Pass	2.42071G	2.22	-17.78	852.11M	-43.50	2.39944G	-33.96	2.48666G	-41.55	17.69972G	-35.26	3
2437MHz	Pass	2.42071G	2.22	-17.78	955.73M	-42.69	2.3998G	-31.15	2.48698G	-40.35	17.69131G	-35.51	4
2452MHz	Pass	2.42071G	2.22	-17.78	657.46M	-44.24	2.39308G	-43.98	2.48374G	-42.69	15.34389G	-35.48	1
2452MHz	Pass	2.42071G	2.22	-17.78	898.48M	-43.48	2.3952G	-44.70	2.48982G	-40.70	24.8766G	-35.91	2
2452MHz	Pass	2.42071G	2.22	-17.78	2.19004G	-43.63	2.39492G	-44.05	2.48638G	-40.95	16.26379G	-35.68	3
2452MHz	Pass	2.42071G	2.22	-17.78	647.16M	-43.61	2.39616G	-44.71	2.48546G	-40.16	15.25695G	-35.06	4



## CSE Non-restricted Band Result

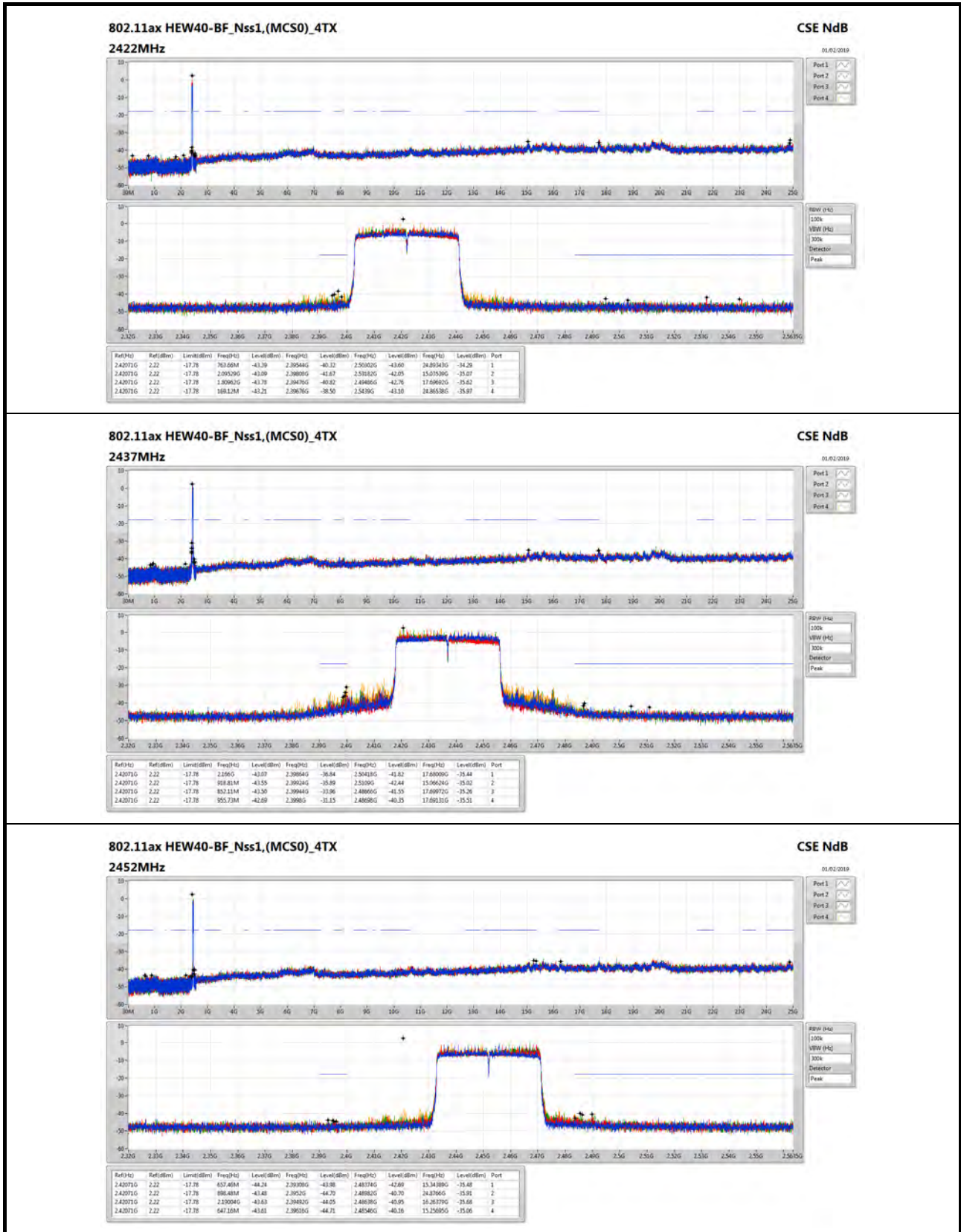
Appendix E.9


**802.11ax HEW20-BF\_Nss1,(MCS0)\_4TX**
**CSE NdB**



# CSE Non-restricted Band Result

Appendix E.9







## CSE Non-restricted Band Result

Appendix E.10

### For Non-beamforming / 4T4S mode Summary

Mode	Result	Ref (Hz)	Ref (dBm)	Limit (dBm)	Freq (Hz)	Level (dBm)	Freq (Hz)	Level (dBm)	Freq (Hz)	Level (dBm)	Freq (Hz)	Level (dBm)	Port
2.4-2.4835GHz	-	-	-	-	-	-	-	-	-	-	-	-	-
802.11ax HEW20_Nss4,(MCS0)_4TX	Pass	2.43198G	8.22	-11.78	947.73M	-43.53	2.39904G	-40.86	2.48354G	-42.53	17.69795G	-34.70	1
802.11ax HEW40_Nss4,(MCS0)_4TX	Pass	2.42196G	1.44	-18.56	1.9141G	-43.63	2.39956G	-36.95	2.50162G	-42.51	17.69131G	-34.87	3

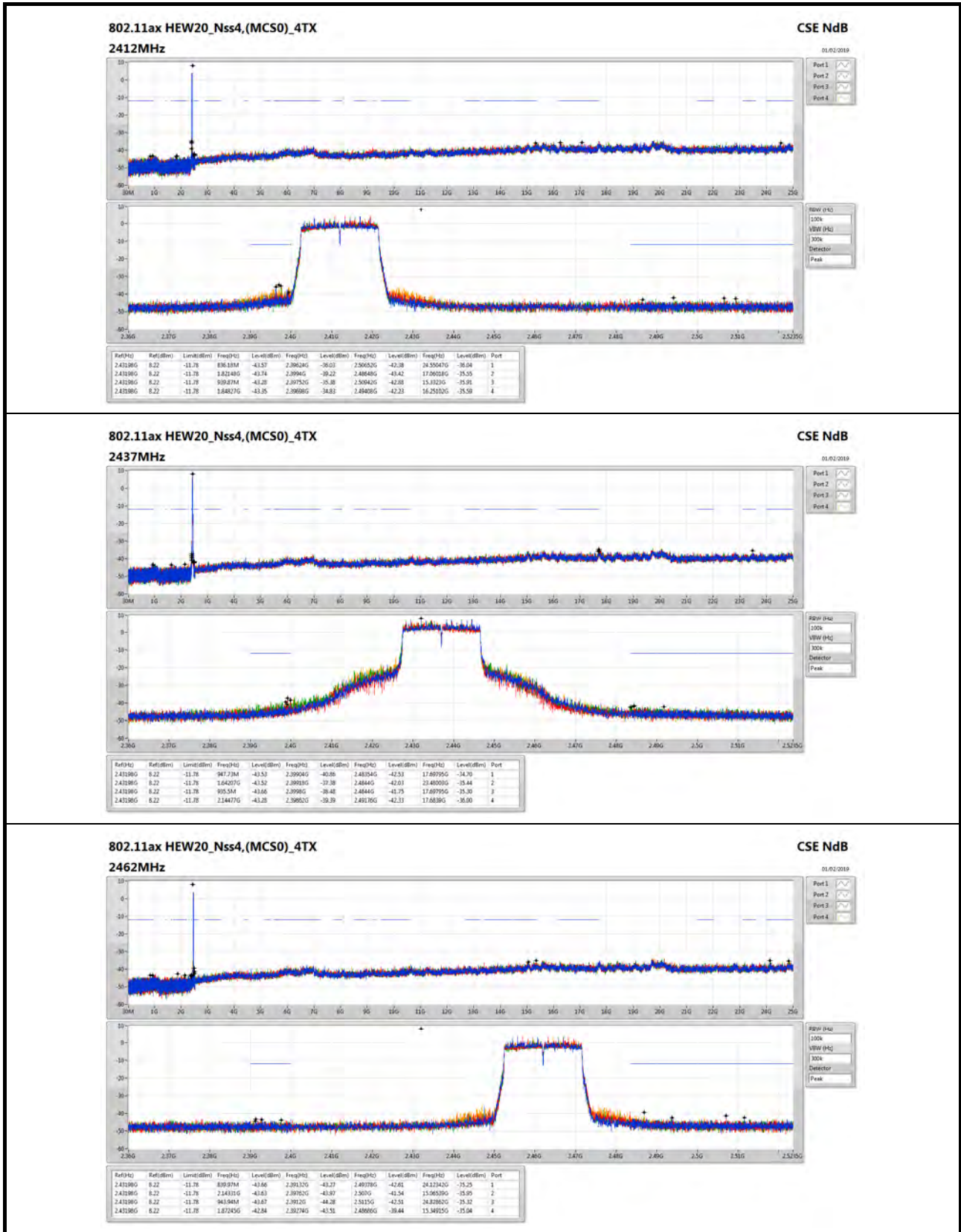
### Result

Mode	Result	Ref (Hz)	Ref (dBm)	Limit (dBm)	Freq (Hz)	Level (dBm)	Freq (Hz)	Level (dBm)	Freq (Hz)	Level (dBm)	Freq (Hz)	Level (dBm)	Port
802.11ax HEW20_Nss4,(MCS0)_4TX	-	-	-	-	-	-	-	-	-	-	-	-	-
2412MHz	Pass	2.43198G	8.22	-11.78	836.18M	-43.57	2.39624G	-36.03	2.50652G	-42.38	24.55047G	-36.04	1
2412MHz	Pass	2.43198G	8.22	-11.78	1.82148G	-43.74	2.3994G	-39.22	2.48648G	-43.42	17.06018G	-35.55	2
2412MHz	Pass	2.43198G	8.22	-11.78	939.87M	-43.28	2.39752G	-35.38	2.50942G	-42.88	15.3323G	-35.91	3
2412MHz	Pass	2.43198G	8.22	-11.78	1.84827G	-43.35	2.39698G	-34.83	2.49408G	-42.23	16.25102G	-35.59	4
2437MHz	Pass	2.43198G	8.22	-11.78	947.73M	-43.53	2.39904G	-40.86	2.48354G	-42.53	17.69795G	-34.70	1
2437MHz	Pass	2.43198G	8.22	-11.78	1.64207G	-43.52	2.39918G	-37.38	2.4844G	-42.03	23.48003G	-35.44	2
2437MHz	Pass	2.43198G	8.22	-11.78	935.5M	-43.66	2.3998G	-38.48	2.4844G	-41.75	17.69795G	-35.30	3
2437MHz	Pass	2.43198G	8.22	-11.78	2.14477G	-43.28	2.39862G	-39.39	2.49176G	-42.33	17.6839G	-36.00	4
2462MHz	Pass	2.43198G	8.22	-11.78	839.97M	-43.66	2.39132G	-43.27	2.49378G	-42.61	24.12342G	-35.25	1
2462MHz	Pass	2.43198G	8.22	-11.78	2.14331G	-43.63	2.39762G	-43.97	2.507G	-41.54	15.06539G	-35.95	2
2462MHz	Pass	2.43198G	8.22	-11.78	943.94M	-43.67	2.3912G	-44.28	2.5115G	-42.51	24.82862G	-35.32	3
2462MHz	Pass	2.43198G	8.22	-11.78	1.87245G	-42.84	2.39274G	-43.51	2.48686G	-39.44	15.34915G	-35.04	4
802.11ax HEW40_Nss4,(MCS0)_4TX	-	-	-	-	-	-	-	-	-	-	-	-	-
2422MHz	Pass	2.42196G	1.44	-18.56	1.62384G	-43.78	2.3992G	-43.23	2.50098G	-43.60	16.36195G	-35.50	1
2422MHz	Pass	2.42196G	1.44	-18.56	888.75M	-43.72	2.39804G	-43.17	2.50146G	-43.41	16.21891G	-35.37	2
2422MHz	Pass	2.42196G	1.44	-18.56	2.12564G	-43.01	2.39404G	-43.35	2.50542G	-42.52	24.85136G	-36.03	3
2422MHz	Pass	2.42196G	1.44	-18.56	1.83338G	-42.81	2.39704G	-43.30	2.50378G	-42.86	15.01576G	-35.39	4
2437MHz	Pass	2.42196G	1.44	-18.56	629.12M	-43.69	2.39956G	-36.74	2.5249G	-43.01	16.60314G	-35.83	1
2437MHz	Pass	2.42196G	1.44	-18.56	1.81649G	-43.00	2.39948G	-37.48	2.48922G	-42.47	24.89623G	-35.81	2
2437MHz	Pass	2.42196G	1.44	-18.56	1.9141G	-43.63	2.39956G	-36.95	2.50162G	-42.51	17.69131G	-34.87	3
2437MHz	Pass	2.42196G	1.44	-18.56	1.61983G	-42.49	2.39952G	-40.46	2.49638G	-42.34	15.04941G	-35.04	4
2452MHz	Pass	2.42196G	1.44	-18.56	1.83509G	-43.74	2.39712G	-44.32	2.55046G	-43.10	24.79246G	-35.16	1
2452MHz	Pass	2.42196G	1.44	-18.56	862.7M	-43.12	2.3948G	-43.89	2.48694G	-42.20	15.02137G	-35.88	2
2452MHz	Pass	2.42196G	1.44	-18.56	1.78586G	-43.06	2.39472G	-44.44	2.49026G	-41.36	15.31024G	-35.60	3
2452MHz	Pass	2.42196G	1.44	-18.56	830.64M	-43.80	2.39364G	-43.52	2.48374G	-42.59	24.8149G	-35.88	4



# CSE Non-restricted Band Result

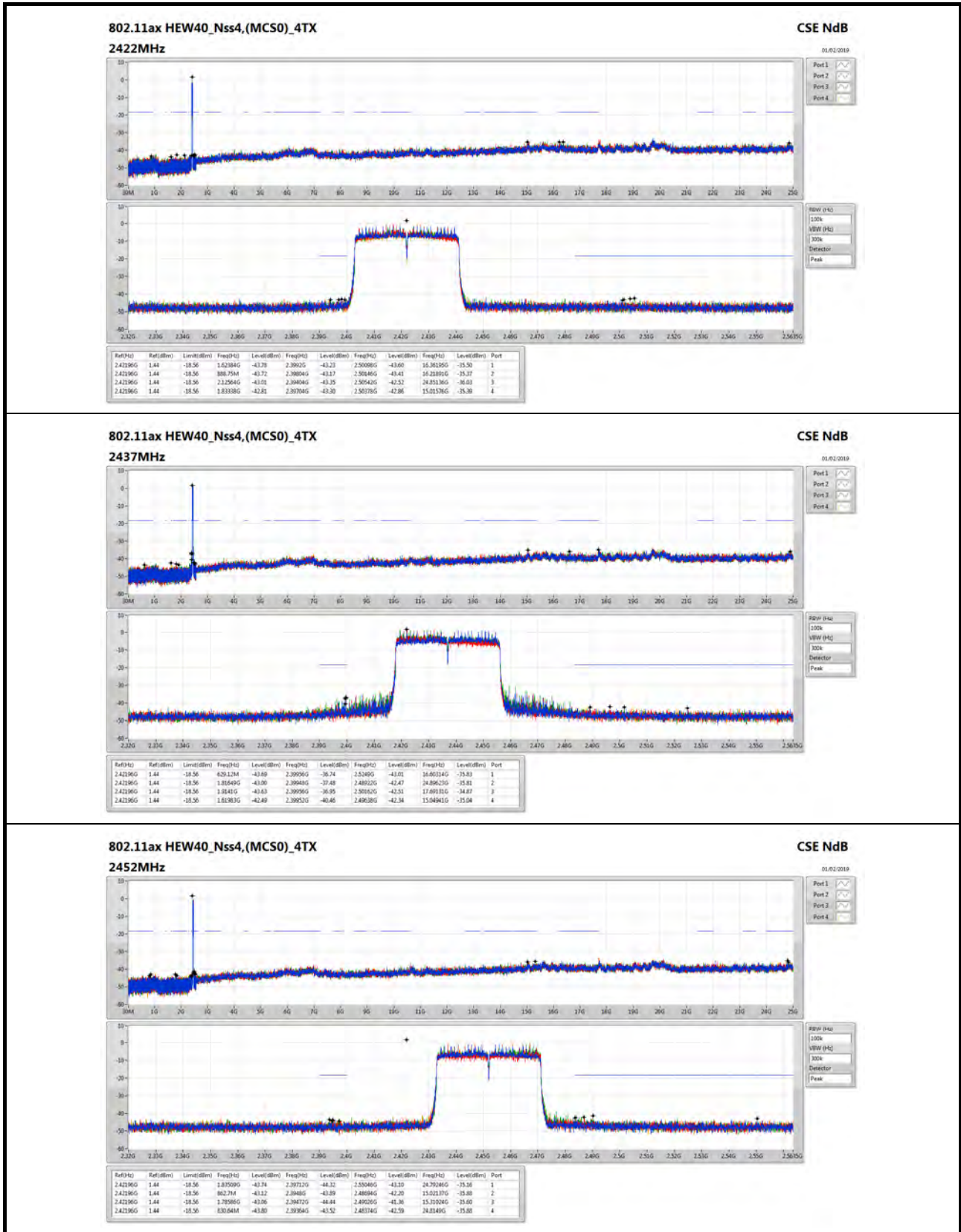
Appendix E.10





# CSE Non-restricted Band Result

Appendix E.10







## CSE Non-restricted Band Result

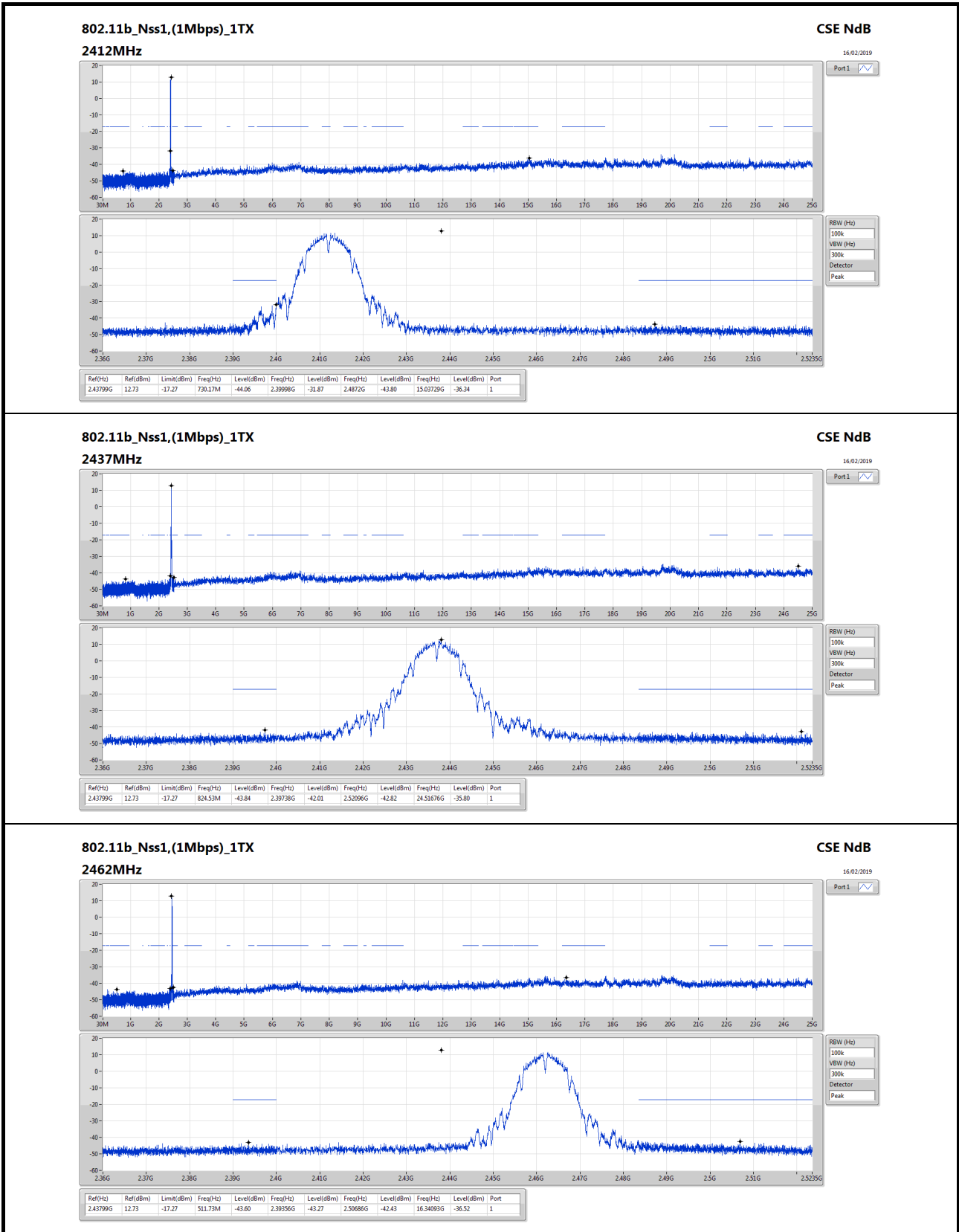
Appendix E.11

**Mode 3: (Ant. 11 Panel antenna / 6.8 dBi)  
For Non-beamforming / 1T1S mode  
Summary**

Mode	Result	Ref (Hz)	Ref (dBm)	Limit (dBm)	Freq (Hz)	Level (dBm)	Freq (Hz)	Level (dBm)	Freq (Hz)	Level (dBm)	Freq (Hz)	Level (dBm)	Port
2.4-2.4835GHz	-	-	-	-	-	-	-	-	-	-	-	-	-
802.11b_Nss1,(1Mbps)_1TX	Pass	2.43799G	12.73	-17.27	730.17M	-44.06	2.39998G	-31.87	2.4872G	-43.80	15.03729G	-36.34	1
802.11g_Nss1,(6Mbps)_1TX	Pass	2.44079G	6.65	-23.35	2.0836G	-44.40	2.39448G	-42.62	2.48452G	-39.70	16.28474G	-36.12	1
802.11ax HEW20_Nss1,(MCS0)_1TX	Pass	2.43077G	6.73	-23.27	1.79061G	-43.24	2.39958G	-32.98	2.50378G	-42.66	15.05134G	-36.35	1
802.11ax HEW40_Nss1,(MCS0)_1TX	Pass	2.42321G	-0.29	-30.29	2.0764G	-44.22	2.39756G	-44.35	2.4867G	-39.06	17.69131G	-35.83	1

**Result**

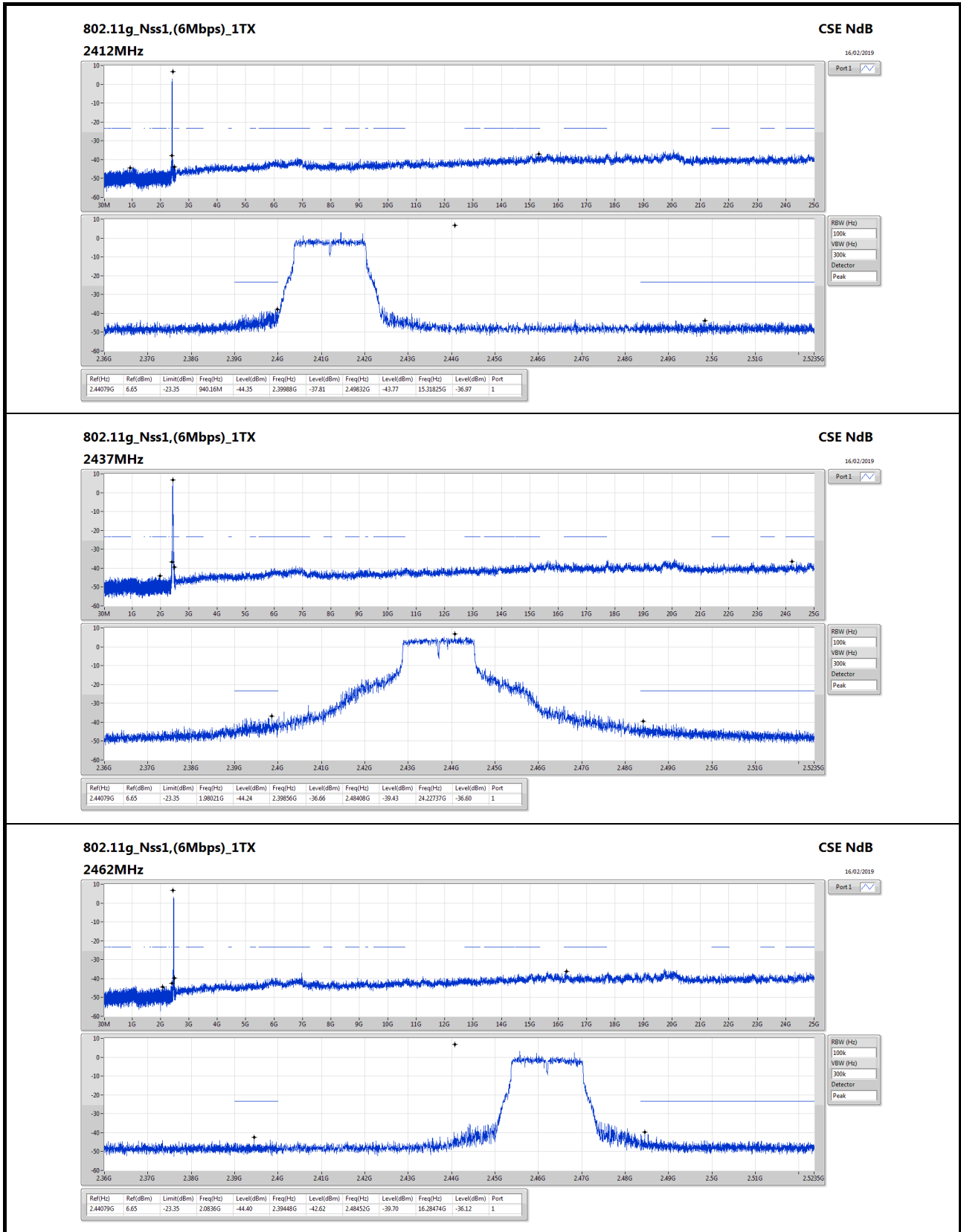
Mode	Result	Ref (Hz)	Ref (dBm)	Limit (dBm)	Freq (Hz)	Level (dBm)	Freq (Hz)	Level (dBm)	Freq (Hz)	Level (dBm)	Freq (Hz)	Level (dBm)	Port
802.11b_Nss1,(1Mbps)_1TX	-	-	-	-	-	-	-	-	-	-	-	-	-
2412MHz	Pass	2.43799G	12.73	-17.27	730.17M	-44.06	2.39998G	-31.87	2.4872G	-43.80	15.03729G	-36.34	1
2437MHz	Pass	2.43799G	12.73	-17.27	824.53M	-43.84	2.39738G	-42.01	2.52096G	-42.82	24.51676G	-35.80	1
2462MHz	Pass	2.43799G	12.73	-17.27	511.73M	-43.60	2.39356G	-43.27	2.50686G	-42.43	16.34093G	-36.52	1
802.11g_Nss1,(6Mbps)_1TX	-	-	-	-	-	-	-	-	-	-	-	-	-
2412MHz	Pass	2.44079G	6.65	-23.35	940.16M	-44.35	2.39988G	-37.81	2.49832G	-43.77	15.31825G	-36.97	1
2437MHz	Pass	2.44079G	6.65	-23.35	1.98021G	-44.24	2.39856G	-36.66	2.48408G	-39.43	24.22737G	-36.60	1
2462MHz	Pass	2.44079G	6.65	-23.35	2.0836G	-44.40	2.39448G	-42.62	2.48452G	-39.70	16.28474G	-36.12	1
802.11ax HEW20_Nss1,(MCS0)_1TX	-	-	-	-	-	-	-	-	-	-	-	-	-
2412MHz	Pass	2.43077G	6.73	-23.27	1.79061G	-43.24	2.39958G	-32.98	2.50378G	-42.66	15.05134G	-36.35	1
2437MHz	Pass	2.43077G	6.73	-23.27	1.78129G	-43.72	2.39994G	-40.61	2.4847G	-39.83	17.69514G	-35.22	1
2462MHz	Pass	2.43077G	6.73	-23.27	891.52M	-43.99	2.39794G	-44.37	2.48356G	-40.23	16.27631G	-36.12	1
802.11ax HEW40_Nss1,(MCS0)_1TX	-	-	-	-	-	-	-	-	-	-	-	-	-
2422MHz	Pass	2.42321G	-0.29	-30.29	1.88834G	-44.44	2.39888G	-37.74	2.49894G	-43.47	24.84575G	-36.68	1
2437MHz	Pass	2.42321G	-0.29	-30.29	2.15856G	-44.43	2.39676G	-36.12	2.4855G	-43.44	15.041G	-36.01	1
2452MHz	Pass	2.42321G	-0.29	-30.29	2.0764G	-44.22	2.39756G	-44.35	2.4867G	-39.06	17.69131G	-35.83	1





# CSE Non-restricted Band Result

Appendix E.11

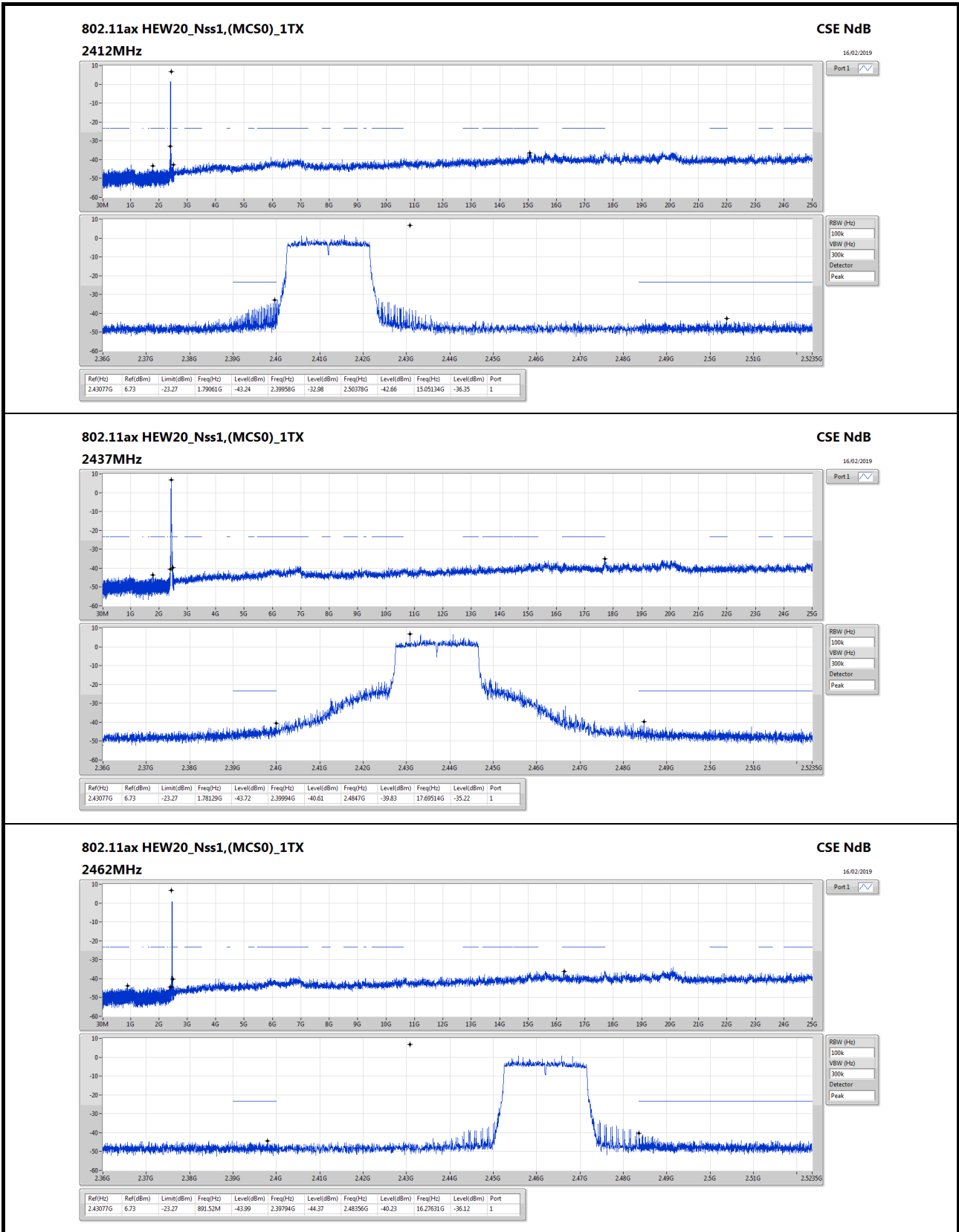






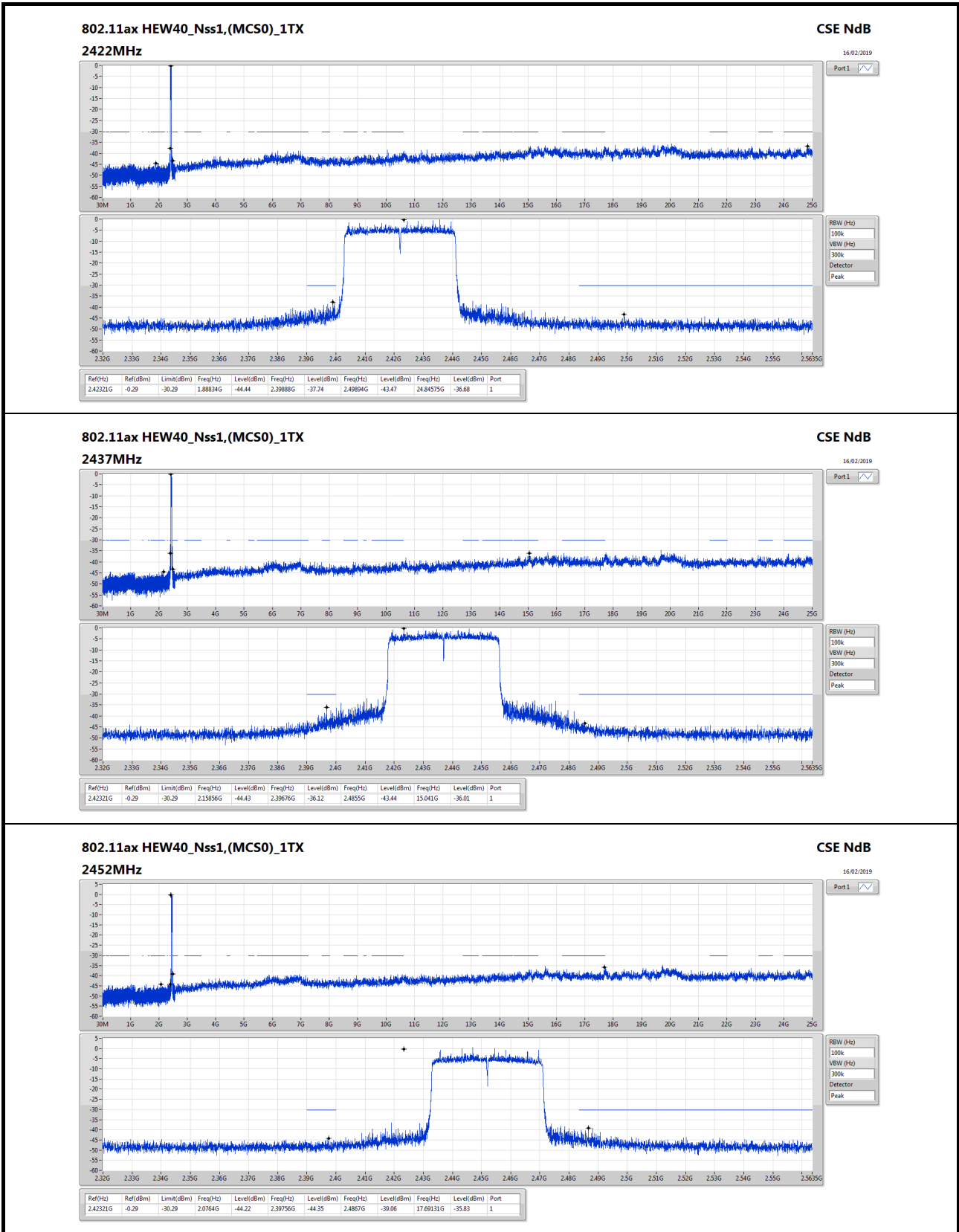
CSE Non-restricted Band Result

Appendix E.11





# CSE Non-restricted Band Result





## CSE Non-restricted Band Result

Appendix E.12

### For Non-beamforming / 2T2S mode Summary

Mode	Result	Ref (Hz)	Ref (dBm)	Limit (dBm)	Freq (Hz)	Level (dBm)	Freq (Hz)	Level (dBm)	Freq (Hz)	Level (dBm)	Freq (Hz)	Level (dBm)	Port
2.4-2.4835GHz	-	-	-	-	-	-	-	-	-	-	-	-	-
802.11ax HEW20_Nss2,(MCS0)_2TX	Pass	2.442G	7.62	-22.38	310.77M	-44.89	2.3984G	-33.97	2.48702G	-43.63	15.26768G	-35.81	2
802.11ax HEW40_Nss2,(MCS0)_2TX	Pass	2.43449G	0.96	-29.04	2.17373G	-44.73	2.39032G	-44.50	2.49074G	-42.31	15.05222G	-35.35	2

### Result

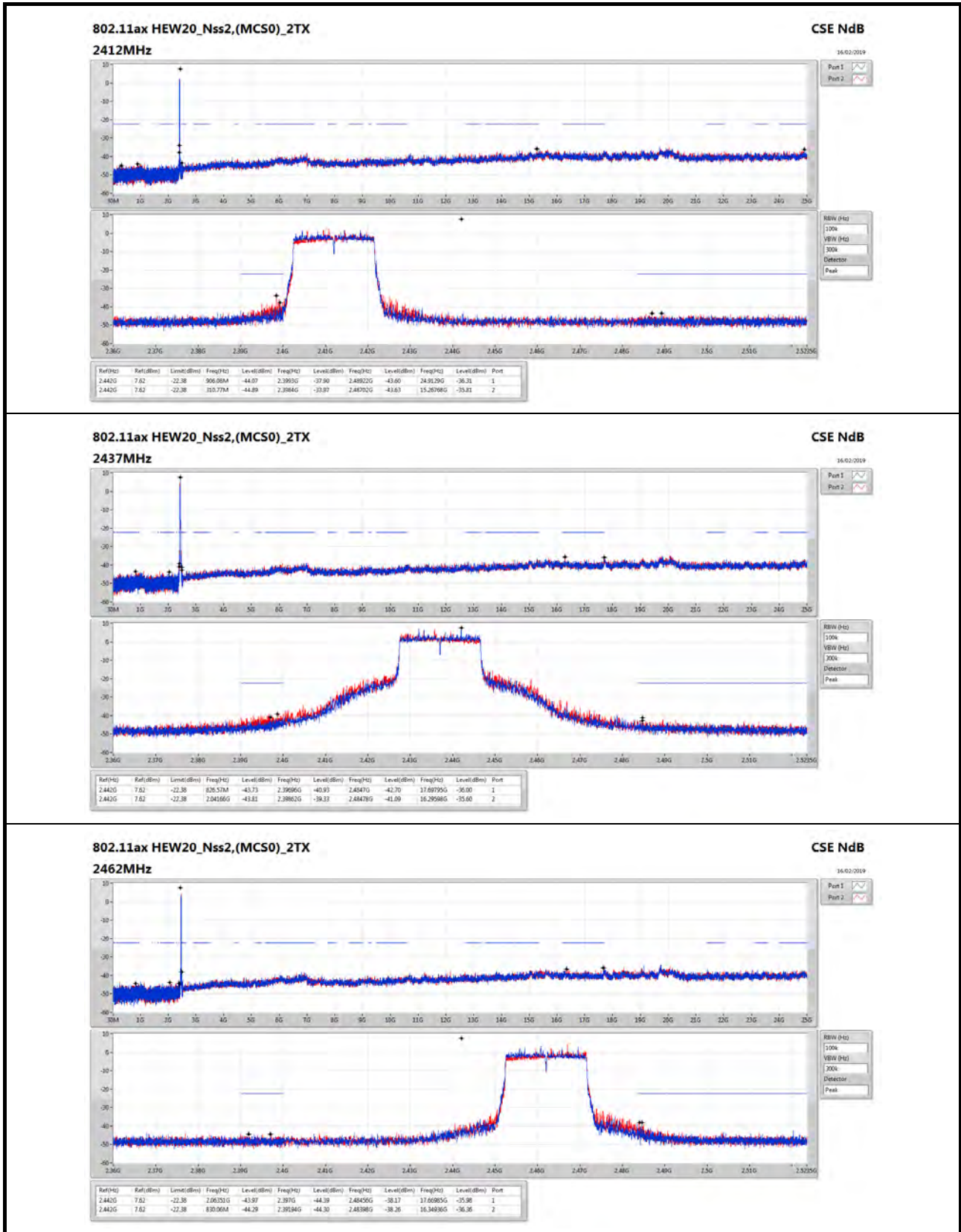
Mode	Result	Ref (Hz)	Ref (dBm)	Limit (dBm)	Freq (Hz)	Level (dBm)	Freq (Hz)	Level (dBm)	Freq (Hz)	Level (dBm)	Freq (Hz)	Level (dBm)	Port
802.11ax HEW20_Nss2,(MCS0)_2TX	-	-	-	-	-	-	-	-	-	-	-	-	-
2412MHz	Pass	2.442G	7.62	-22.38	906.08M	-44.07	2.3993G	-37.90	2.48922G	-43.60	24.9129G	-36.31	1
2412MHz	Pass	2.442G	7.62	-22.38	310.77M	-44.89	2.3984G	-33.97	2.48702G	-43.63	15.26768G	-35.81	2
2437MHz	Pass	2.442G	7.62	-22.38	826.57M	-43.73	2.39696G	-40.93	2.4847G	-42.70	17.69795G	-36.00	1
2437MHz	Pass	2.442G	7.62	-22.38	2.04166G	-43.81	2.39862G	-39.33	2.48478G	-41.09	16.29598G	-35.60	2
2462MHz	Pass	2.442G	7.62	-22.38	2.06351G	-43.97	2.397G	-44.39	2.48456G	-38.17	17.66985G	-35.98	1
2462MHz	Pass	2.442G	7.62	-22.38	830.06M	-44.29	2.39194G	-44.30	2.48398G	-38.26	16.34936G	-36.36	2
802.11ax HEW40_Nss2,(MCS0)_2TX	-	-	-	-	-	-	-	-	-	-	-	-	-
2422MHz	Pass	2.43449G	0.96	-29.04	373.21M	-44.15	2.39712G	-41.94	2.5363G	-43.52	17.69692G	-35.96	1
2422MHz	Pass	2.43449G	0.96	-29.04	2.09358G	-44.26	2.39884G	-40.49	2.49538G	-43.79	17.69692G	-36.12	2
2437MHz	Pass	2.43449G	0.96	-29.04	891.9M	-43.36	2.39856G	-39.44	2.4875G	-42.61	16.31427G	-36.13	1
2437MHz	Pass	2.43449G	0.96	-29.04	1.63243G	-43.83	2.39928G	-38.66	2.48886G	-43.16	24.63821G	-36.05	2
2452MHz	Pass	2.43449G	0.96	-29.04	697.54M	-44.73	2.3978G	-44.62	2.48642G	-43.63	17.1332G	-35.43	1
2452MHz	Pass	2.43449G	0.96	-29.04	2.17373G	-44.73	2.39032G	-44.50	2.49074G	-42.31	15.05222G	-35.35	2

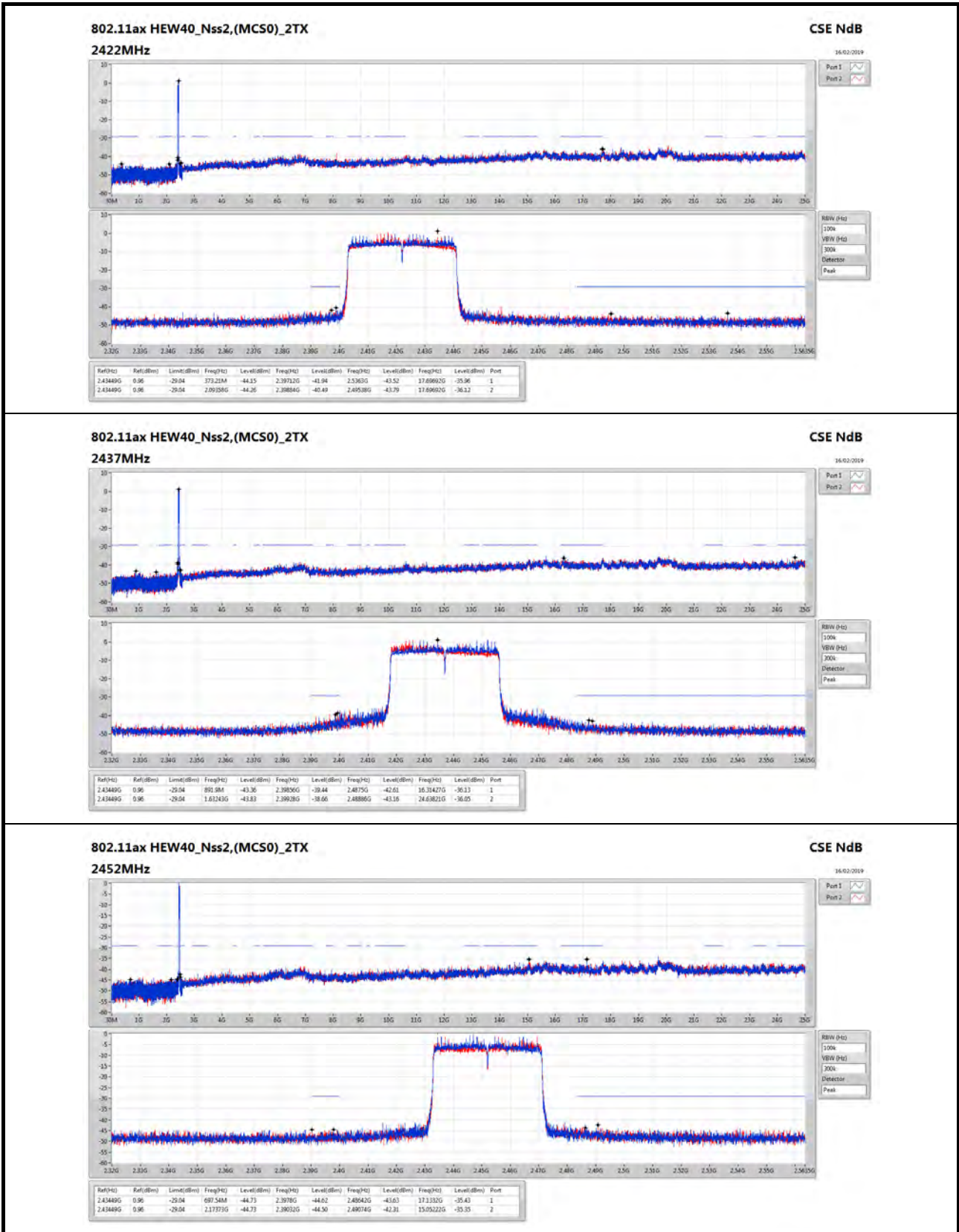




## CSE Non-restricted Band Result

Appendix E.12


**802.11ax HEW20\_Nss2,(MCS0)\_2TX**
**CSE NdB**





## CSE Non-restricted Band Result

Appendix E.13

### For Non-beamforming / 4T1S mode Summary

Mode	Result	Ref (Hz)	Ref (dBm)	Limit (dBm)	Freq (Hz)	Level (dBm)	Freq (Hz)	Level (dBm)	Freq (Hz)	Level (dBm)	Freq (Hz)	Level (dBm)	Port
2.4-2.4835GHz	-	-	-	-	-	-	-	-	-	-	-	-	-
802.11b_Nss1,(1Mbps)_4TX	Pass	2.43599G	14.06	-15.94	2.01633G	-44.63	2.39996G	-32.74	2.51042G	-43.52	15.02886G	-35.82	1
802.11g_Nss1,(6Mbps)_4TX	Pass	2.43073G	6.53	-23.47	2.08564G	-44.19	2.39634G	-39.98	2.49088G	-42.35	17.67828G	-35.06	3
802.11ax HEW20_Nss1,(MCS0)_4TX	Pass	2.43073G	5.69	-24.31	1.90478G	-43.97	2.39782G	-39.82	2.4989G	-43.00	17.68671G	-35.30	1
802.11ax HEW40_Nss1,(MCS0)_4TX	Pass	2.43449G	-0.50	-30.50	2.30082G	-43.69	2.39476G	-44.06	2.51454G	-43.34	16.29464G	-34.39	3

### Result

Mode	Result	Ref (Hz)	Ref (dBm)	Limit (dBm)	Freq (Hz)	Level (dBm)	Freq (Hz)	Level (dBm)	Freq (Hz)	Level (dBm)	Freq (Hz)	Level (dBm)	Port
802.11b_Nss1,(1Mbps)_4TX	-	-	-	-	-	-	-	-	-	-	-	-	-
2412MHz	Pass	2.43599G	14.06	-15.94	2.01633G	-44.63	2.39996G	-32.74	2.51042G	-43.52	15.02886G	-35.82	1
2412MHz	Pass	2.43599G	14.06	-15.94	232.42M	-43.52	2.399G	-35.17	2.48986G	-43.16	16.26507G	-35.34	2
2412MHz	Pass	2.43599G	14.06	-15.94	2.10632G	-44.00	2.39998G	-33.71	2.5044G	-42.98	24.22737G	-36.43	3
2412MHz	Pass	2.43599G	14.06	-15.94	635.8M	-43.95	2.39996G	-32.85	2.51312G	-43.57	15.05415G	-35.81	4
2437MHz	Pass	2.43599G	14.06	-15.94	1.91672G	-43.93	2.39896G	-43.58	2.48516G	-42.85	17.13042G	-36.43	1
2437MHz	Pass	2.43599G	14.06	-15.94	1.93507G	-43.97	2.39682G	-43.35	2.49352G	-42.69	16.29878G	-36.32	2
2437MHz	Pass	2.43599G	14.06	-15.94	2.17884G	-44.06	2.39446G	-42.40	2.49106G	-41.36	15.04291G	-35.63	3
2437MHz	Pass	2.43599G	14.06	-15.94	907.54M	-43.41	2.3997G	-42.53	2.48732G	-42.41	15.03167G	-35.75	4
2462MHz	Pass	2.43599G	14.06	-15.94	1.97206G	-42.95	2.39298G	-43.57	2.4941G	-43.03	21.49086G	-36.14	1
2462MHz	Pass	2.43599G	14.06	-15.94	2.15583G	-44.27	2.39122G	-44.08	2.48626G	-42.77	24.78366G	-35.99	2
2462MHz	Pass	2.43599G	14.06	-15.94	874.33M	-43.94	2.39596G	-44.26	2.52052G	-41.96	15.29015G	-35.76	3
2462MHz	Pass	2.43599G	14.06	-15.94	884.82M	-43.42	2.39214G	-44.01	2.48734G	-42.62	17.05175G	-35.12	4
802.11g_Nss1,(6Mbps)_4TX	-	-	-	-	-	-	-	-	-	-	-	-	-
2412MHz	Pass	2.43073G	6.53	-23.47	159.32M	-43.46	2.39908G	-42.27	2.49946G	-43.38	24.49428G	-36.11	1
2412MHz	Pass	2.43073G	6.53	-23.47	837.05M	-43.20	2.3999G	-42.92	2.49992G	-43.55	24.5589G	-35.54	2
2412MHz	Pass	2.43073G	6.53	-23.47	887.15M	-44.34	2.39986G	-41.39	2.5225G	-43.48	16.60503G	-35.91	3
2412MHz	Pass	2.43073G	6.53	-23.47	2.19748G	-43.68	2.39918G	-38.80	2.49836G	-42.24	17.69795G	-36.06	4
2437MHz	Pass	2.43073G	6.53	-23.47	1.90856G	-44.02	2.3939G	-42.57	2.49078G	-42.48	17.69795G	-36.05	1
2437MHz	Pass	2.43073G	6.53	-23.47	908.41M	-44.00	2.39544G	-42.29	2.49684G	-42.79	17.68671G	-35.45	2
2437MHz	Pass	2.43073G	6.53	-23.47	2.08564G	-44.19	2.39634G	-39.98	2.49088G	-42.35	17.67828G	-35.06	3
2437MHz	Pass	2.43073G	6.53	-23.47	1.85381G	-44.00	2.39826G	-42.48	2.5154G	-42.20	15.34353G	-36.12	4
2462MHz	Pass	2.43073G	6.53	-23.47	2.10807G	-44.36	2.39694G	-43.67	2.51448G	-43.15	15.06258G	-35.31	1
2462MHz	Pass	2.43073G	6.53	-23.47	2.16632G	-44.02	2.39514G	-44.12	2.49598G	-42.05	24.86514G	-35.72	2
2462MHz	Pass	2.43073G	6.53	-23.47	1.91614G	-43.50	2.3953G	-44.13	2.4839G	-43.43	24.43247G	-35.80	3
2462MHz	Pass	2.43073G	6.53	-23.47	823.95M	-43.49	2.3973G	-44.28	2.49304G	-42.48	15.26768G	-36.13	4
802.11ax HEW20_Nss1,(MCS0)_4TX	-	-	-	-	-	-	-	-	-	-	-	-	-
2412MHz	Pass	2.43073G	5.69	-24.31	1.90478G	-43.97	2.39782G	-39.82	2.4989G	-43.00	17.68671G	-35.30	1
2412MHz	Pass	2.43073G	5.69	-24.31	957.05M	-43.55	2.39998G	-40.21	2.48856G	-43.28	15.0401G	-35.87	2
2412MHz	Pass	2.43073G	5.69	-24.31	2.16253G	-43.10	2.39902G	-40.65	2.50024G	-43.18	15.25644G	-36.19	3
2412MHz	Pass	2.43073G	5.69	-24.31	857.73M	-43.98	2.39822G	-40.66	2.50362G	-43.82	24.86233G	-35.55	4
2437MHz	Pass	2.43073G	5.69	-24.31	1.61673G	-44.04	2.3985G	-42.36	2.50634G	-43.41	15.07943G	-35.66	1
2437MHz	Pass	2.43073G	5.69	-24.31	800.94M	-44.25	2.39758G	-41.23	2.48804G	-42.01	15.03448G	-35.90	2
2437MHz	Pass	2.43073G	5.69	-24.31	959.67M	-44.31	2.39614G	-40.57	2.5176G	-41.93	24.27513G	-35.75	3
2437MHz	Pass	2.43073G	5.69	-24.31	842.01M	-43.52	2.39912G	-41.55	2.5002G	-43.52	17.07141G	-35.80	4
2462MHz	Pass	2.43073G	5.69	-24.31	795.99M	-44.06	2.3912G	-43.74	2.4959G	-43.34	15.07943G	-36.31	1
2462MHz	Pass	2.43073G	5.69	-24.31	873.46M	-43.89	2.39988G	-43.96	2.49344G	-42.75	15.01762G	-36.48	2



**CSE Non-restricted Band Result**

Appendix E.13

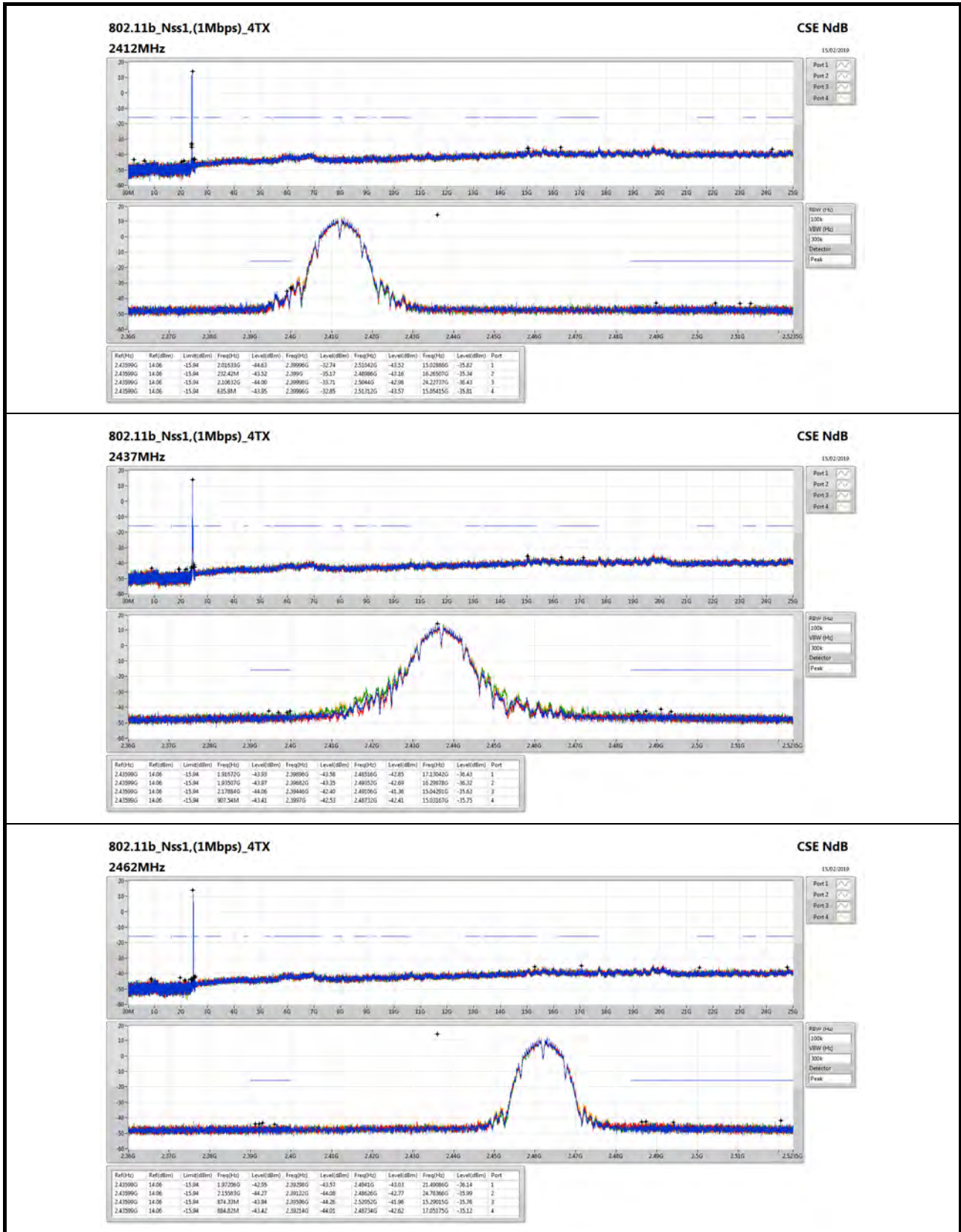
Mode	Result	Ref (Hz)	Ref (dBm)	Limit (dBm)	Freq (Hz)	Level (dBm)	Freq (Hz)	Level (dBm)	Freq (Hz)	Level (dBm)	Freq (Hz)	Level (dBm)	Port
2462MHz	Pass	2.43073G	5.69	-24.31	1.96157G	-43.88	2.39532G	-43.98	2.4893G	-43.07	24.86795G	-35.94	3
2462MHz	Pass	2.43073G	5.69	-24.31	820.45M	-43.36	2.3965G	-44.21	2.50716G	-43.78	17.69795G	-36.25	4
802.11ax HEW40_Nss1,(MCS0)_4TX	-	-	-	-	-	-	-	-	-	-	-	-	-
2422MHz	Pass	2.43449G	-0.50	-30.50	927.11M	-43.92	2.39784G	-44.65	2.51598G	-43.62	15.02978G	-35.66	1
2422MHz	Pass	2.43449G	-0.50	-30.50	796.86M	-43.58	2.39228G	-43.68	2.48658G	-43.22	15.06904G	-36.01	2
2422MHz	Pass	2.43449G	-0.50	-30.50	2.30082G	-43.69	2.39476G	-44.06	2.51454G	-43.34	16.29464G	-34.39	3
2422MHz	Pass	2.43449G	-0.50	-30.50	1.77469G	-43.96	2.39612G	-44.09	2.52018G	-43.25	17.69972G	-35.98	4
2437MHz	Pass	2.43449G	-0.50	-30.50	836.65M	-44.22	2.39212G	-43.70	2.50658G	-42.79	24.91025G	-36.06	1
2437MHz	Pass	2.43449G	-0.50	-30.50	903.35M	-43.62	2.39328G	-43.87	2.49878G	-42.30	24.91306G	-35.57	2
2437MHz	Pass	2.43449G	-0.50	-30.50	832.07M	-43.65	2.39696G	-43.43	2.4957G	-43.40	17.69131G	-35.67	3
2437MHz	Pass	2.43449G	-0.50	-30.50	1.79445G	-43.96	2.39872G	-43.47	2.49734G	-42.97	23.42664G	-35.77	4
2452MHz	Pass	2.43449G	-0.50	-30.50	774.54M	-44.61	2.39928G	-44.54	2.48582G	-43.64	24.5064G	-36.27	1
2452MHz	Pass	2.43449G	-0.50	-30.50	1.43119G	-43.98	2.39116G	-43.19	2.49846G	-43.06	15.08026G	-35.89	2
2452MHz	Pass	2.43449G	-0.50	-30.50	925.96M	-44.01	2.39016G	-44.19	2.48394G	-43.68	17.69411G	-35.84	3
2452MHz	Pass	2.43449G	-0.50	-30.50	953.44M	-43.94	2.39564G	-45.09	2.55798G	-43.28	24.91586G	-35.95	4





# CSE Non-restricted Band Result

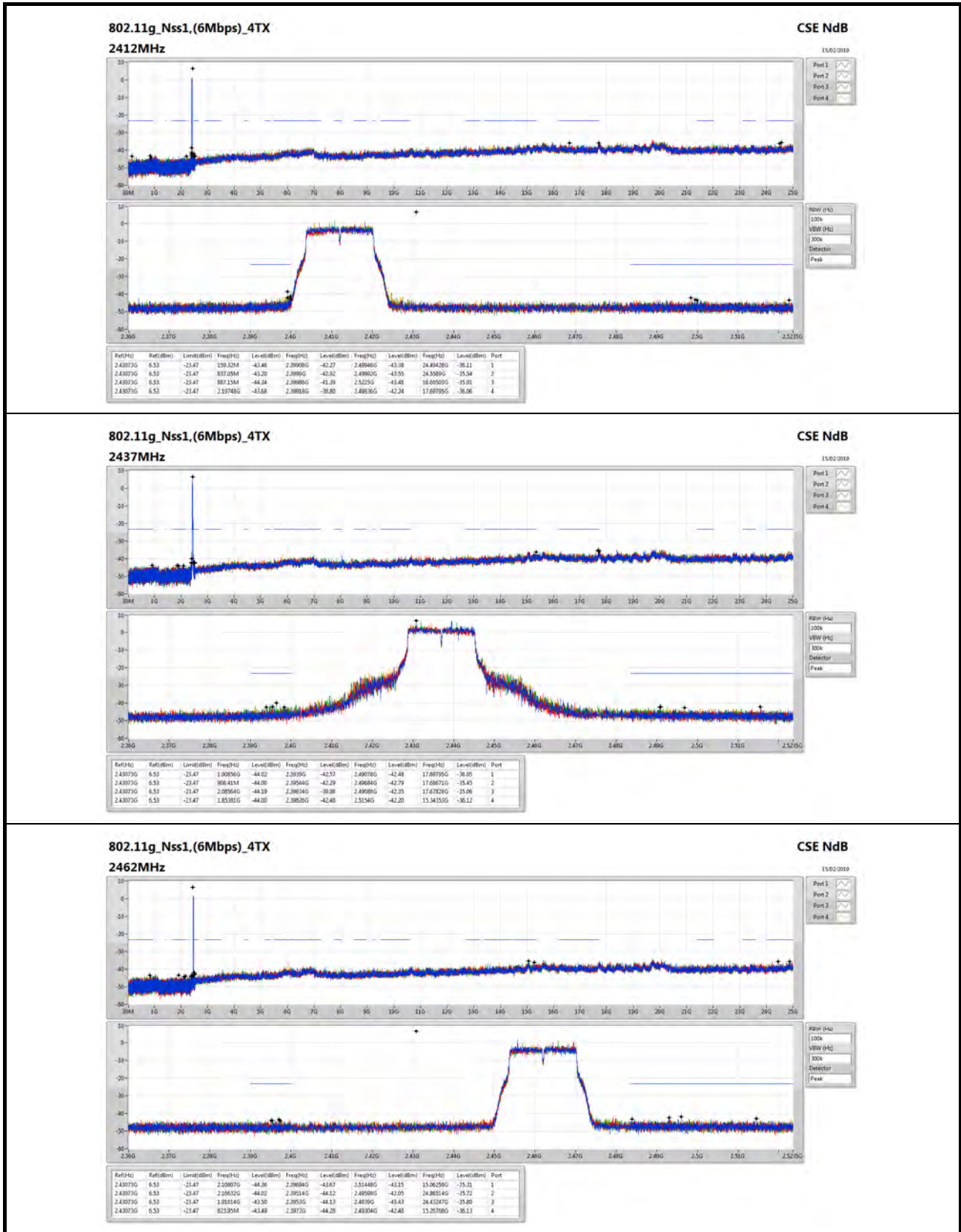
Appendix E.13

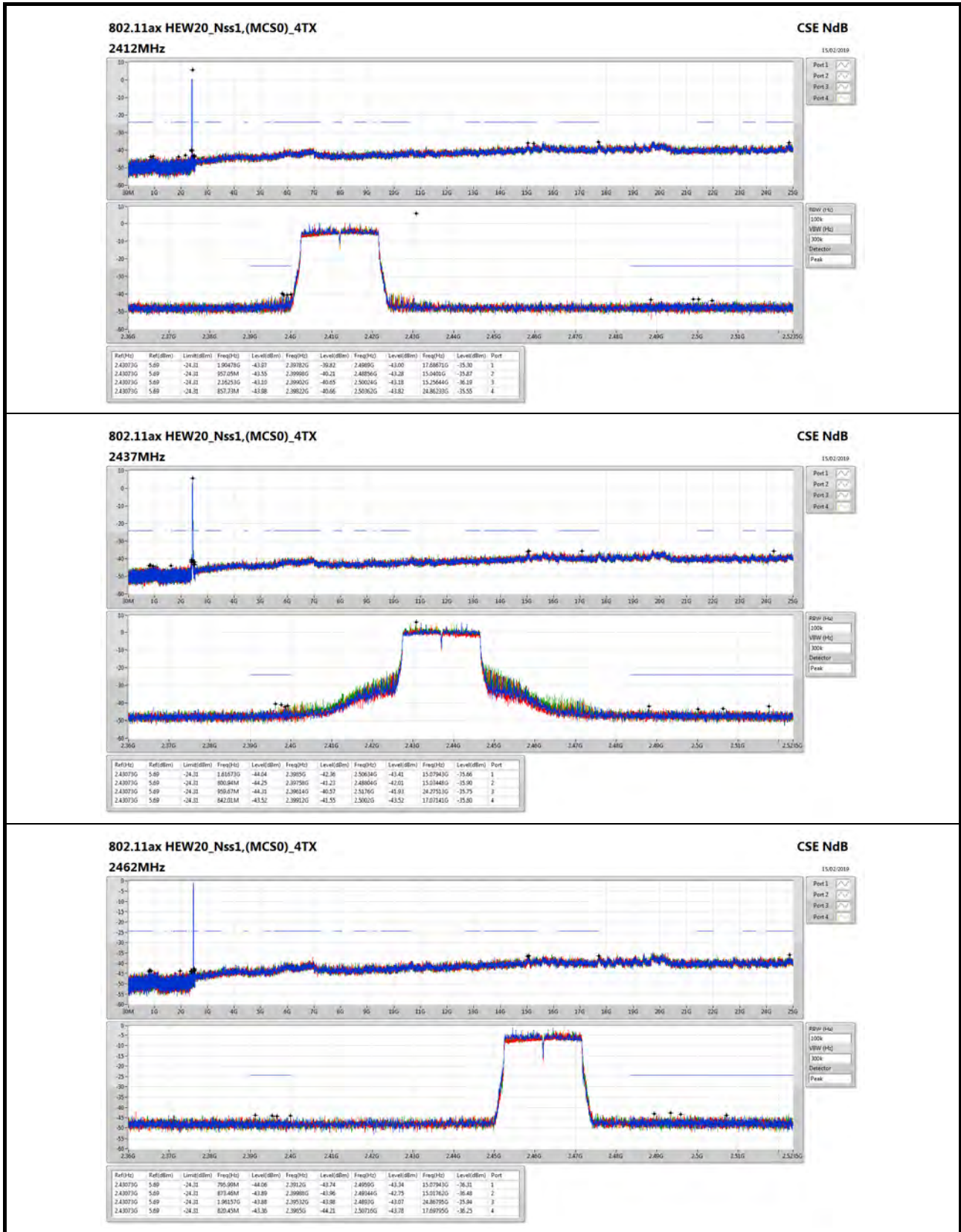




# CSE Non-restricted Band Result

Appendix E.13



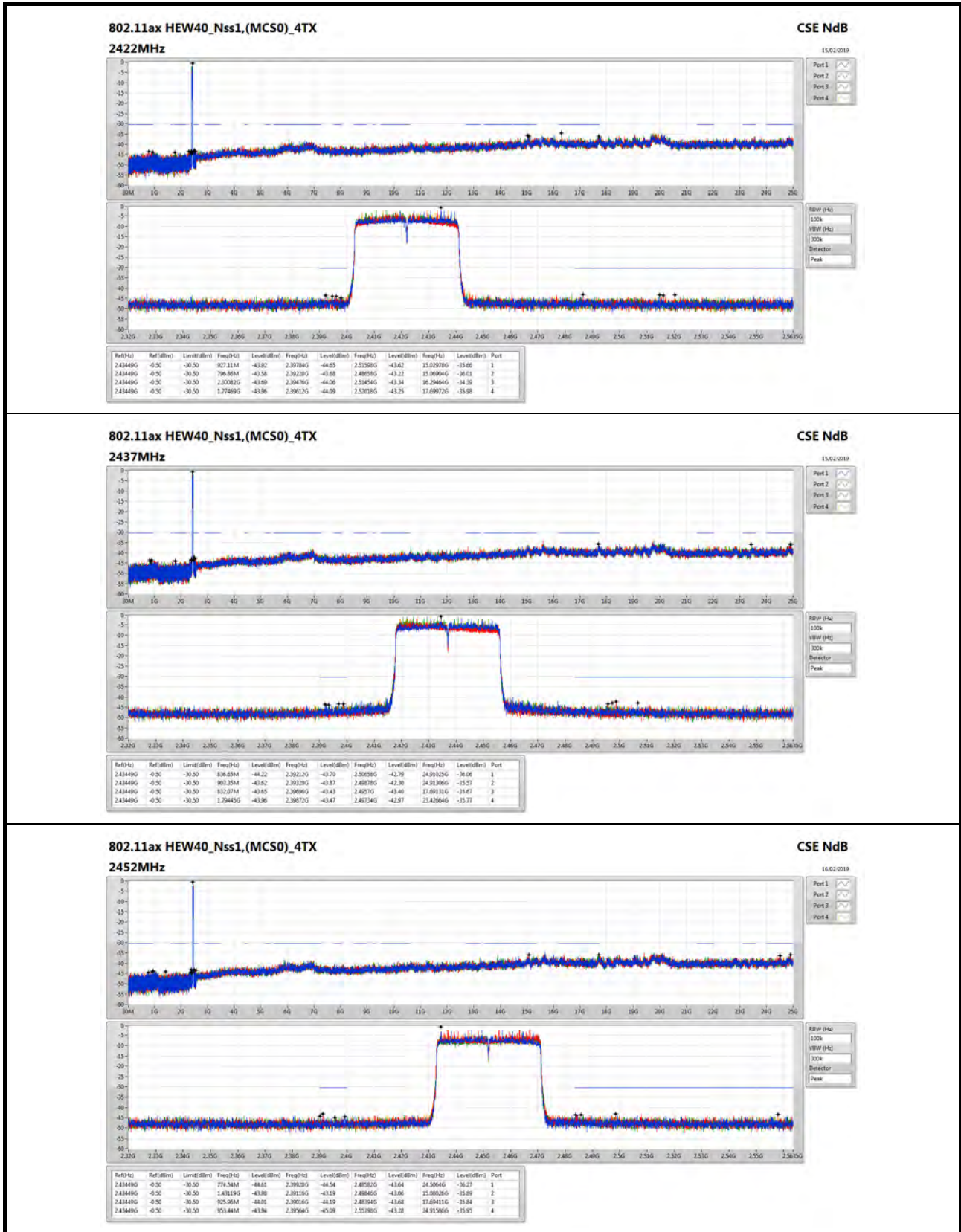






# CSE Non-restricted Band Result

Appendix E.13







## CSE Non-restricted Band Result

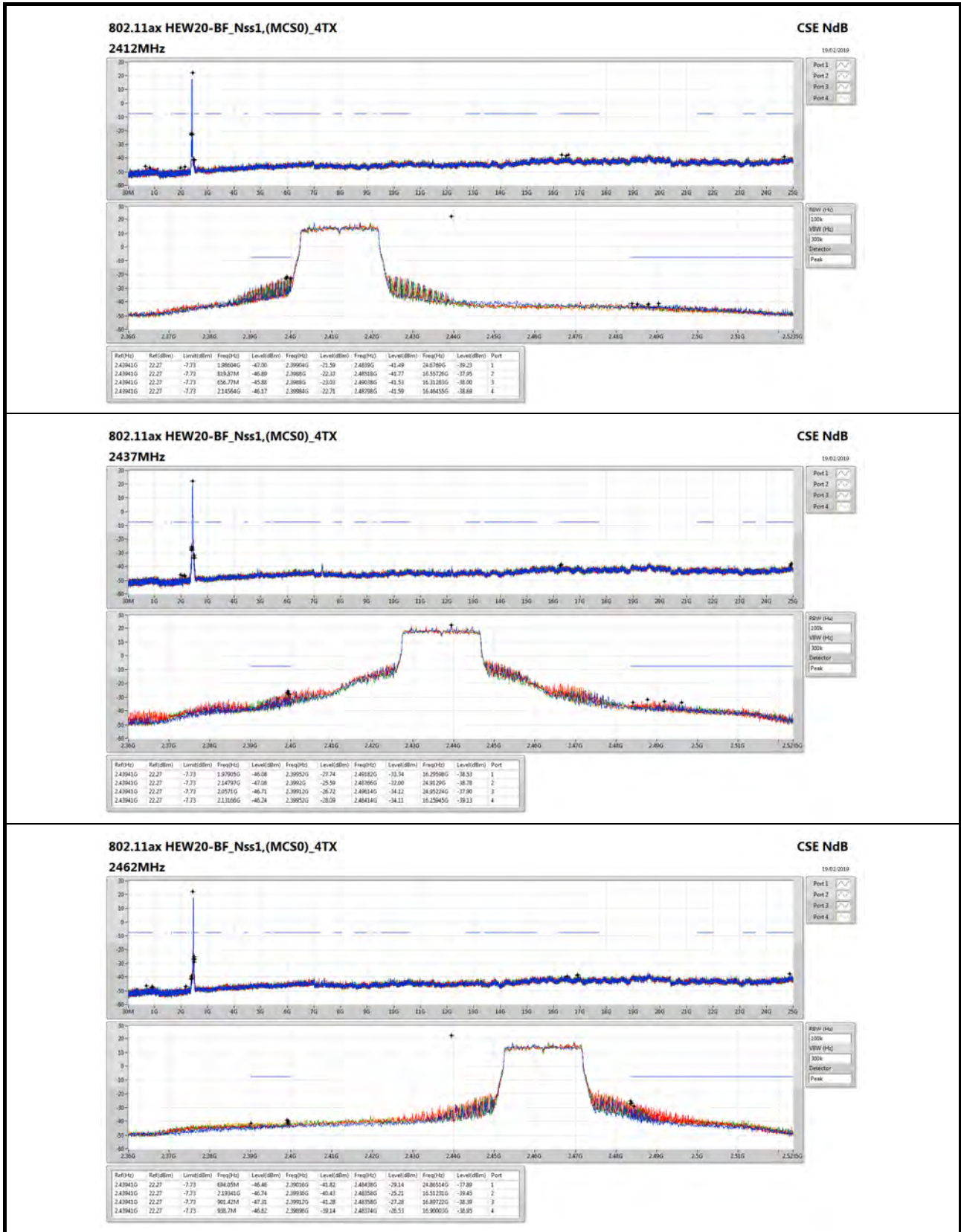
Appendix E.14

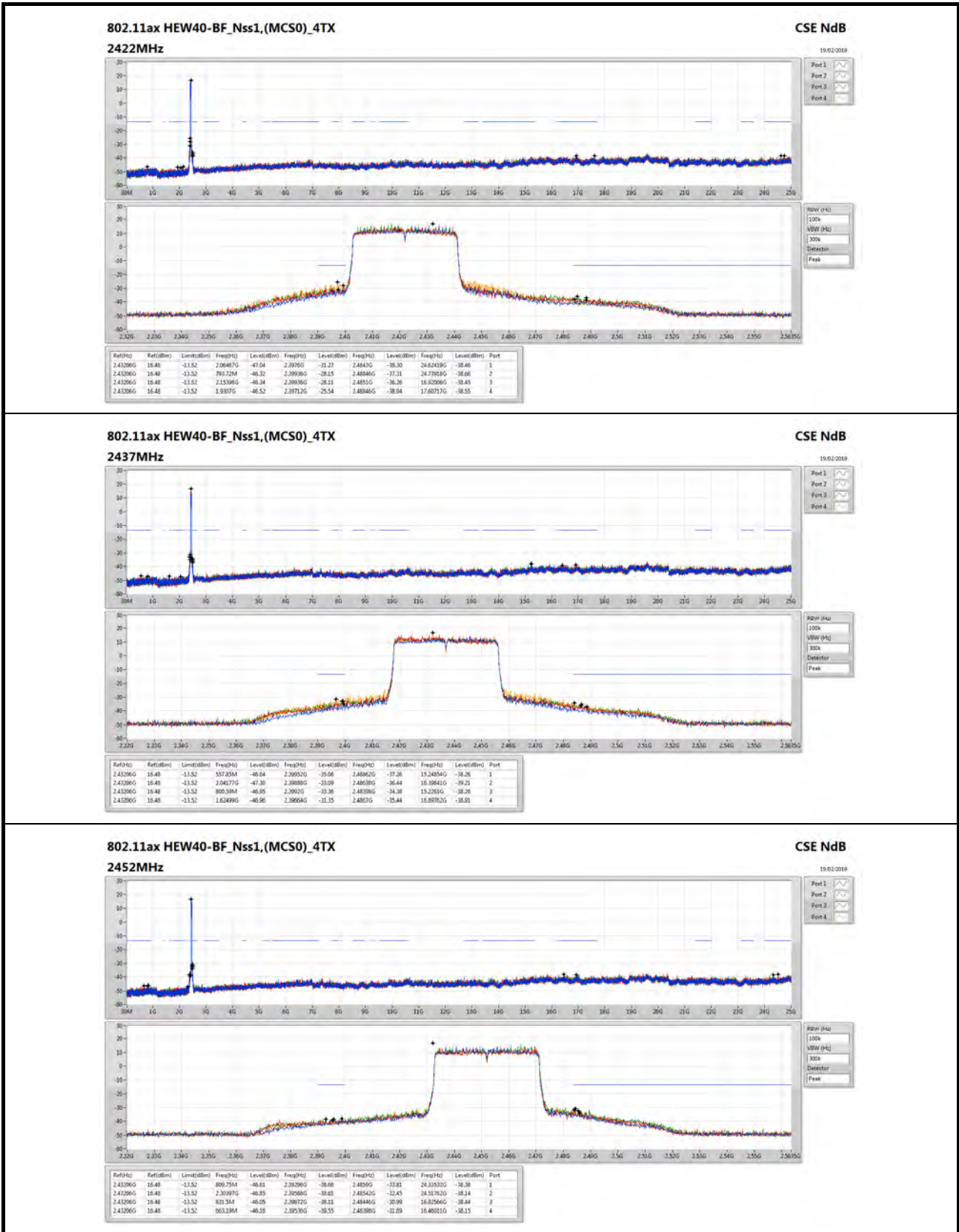
### For Beamforming / 4T1S mode Summary

Mode	Result	Ref (Hz)	Ref (dBm)	Limit (dBm)	Freq (Hz)	Level (dBm)	Freq (Hz)	Level (dBm)	Freq (Hz)	Level (dBm)	Freq (Hz)	Level (dBm)	Port
2.4-2.4835GHz	-	-	-	-	-	-	-	-	-	-	-	-	-
802.11ax HEW20-BF_Nss1,(MCS0)_4TX	Pass	2.43941G	22.27	-7.73	1.98604G	-47.00	2.39904G	-21.59	2.4839G	-41.49	24.6769G	-39.23	1
802.11ax HEW40-BF_Nss1,(MCS0)_4TX	Pass	2.43206G	16.48	-13.52	1.9307G	-46.52	2.39712G	-25.54	2.48846G	-38.94	17.60717G	-38.55	4

### Result

Mode	Result	Ref (Hz)	Ref (dBm)	Limit (dBm)	Freq (Hz)	Level (dBm)	Freq (Hz)	Level (dBm)	Freq (Hz)	Level (dBm)	Freq (Hz)	Level (dBm)	Port
802.11ax HEW20-BF_Nss1,(MCS0)_4TX	-	-	-	-	-	-	-	-	-	-	-	-	-
2412MHz	Pass	2.43941G	22.27	-7.73	1.98604G	-47.00	2.39904G	-21.59	2.4839G	-41.49	24.6769G	-39.23	1
2412MHz	Pass	2.43941G	22.27	-7.73	819.87M	-46.89	2.3988G	-22.33	2.48518G	-41.77	16.55726G	-37.95	2
2412MHz	Pass	2.43941G	22.27	-7.73	656.77M	-45.88	2.3988G	-23.03	2.49038G	-41.53	16.31283G	-38.00	3
2412MHz	Pass	2.43941G	22.27	-7.73	2.14564G	-46.17	2.39984G	-22.71	2.48798G	-41.59	16.46455G	-38.69	4
2437MHz	Pass	2.43941G	22.27	-7.73	1.97905G	-46.08	2.39952G	-27.74	2.49182G	-33.34	16.29598G	-38.53	1
2437MHz	Pass	2.43941G	22.27	-7.73	2.14797G	-47.08	2.3992G	-25.59	2.48766G	-32.00	24.9129G	-38.78	2
2437MHz	Pass	2.43941G	22.27	-7.73	2.0571G	-46.71	2.39912G	-26.72	2.49614G	-34.12	24.95224G	-37.90	3
2437MHz	Pass	2.43941G	22.27	-7.73	2.13166G	-46.24	2.39952G	-28.09	2.48414G	-34.11	16.25945G	-39.13	4
2462MHz	Pass	2.43941G	22.27	-7.73	694.05M	-46.46	2.39016G	-41.82	2.48438G	-29.14	24.86514G	-37.89	1
2462MHz	Pass	2.43941G	22.27	-7.73	2.19341G	-46.74	2.39936G	-40.43	2.48358G	-25.21	16.51231G	-39.45	2
2462MHz	Pass	2.43941G	22.27	-7.73	901.42M	-47.31	2.39912G	-41.28	2.48358G	-27.28	16.89722G	-38.39	3
2462MHz	Pass	2.43941G	22.27	-7.73	938.7M	-46.82	2.39896G	-39.14	2.48374G	-26.53	16.90003G	-38.95	4
802.11ax HEW40-BF_Nss1,(MCS0)_4TX	-	-	-	-	-	-	-	-	-	-	-	-	-
2422MHz	Pass	2.43206G	16.48	-13.52	2.06467G	-47.04	2.3976G	-31.27	2.4843G	-38.30	24.62419G	-38.46	1
2422MHz	Pass	2.43206G	16.48	-13.52	793.72M	-46.32	2.39936G	-28.15	2.48846G	-37.31	24.73918G	-38.66	2
2422MHz	Pass	2.43206G	16.48	-13.52	2.15398G	-46.34	2.39936G	-28.11	2.4851G	-36.26	16.92006G	-38.45	3
2422MHz	Pass	2.43206G	16.48	-13.52	1.9307G	-46.52	2.39712G	-25.54	2.48846G	-38.94	17.60717G	-38.55	4
2437MHz	Pass	2.43206G	16.48	-13.52	557.85M	-46.64	2.39952G	-35.06	2.48862G	-37.26	15.24854G	-38.26	1
2437MHz	Pass	2.43206G	16.48	-13.52	2.04177G	-47.30	2.39888G	-33.09	2.48638G	-36.44	16.39841G	-39.21	2
2437MHz	Pass	2.43206G	16.48	-13.52	800.59M	-46.95	2.3992G	-33.36	2.48398G	-34.38	15.2261G	-38.26	3
2437MHz	Pass	2.43206G	16.48	-13.52	1.62499G	-46.96	2.39664G	-31.35	2.4867G	-35.44	16.89762G	-38.91	4
2452MHz	Pass	2.43206G	16.48	-13.52	809.75M	-46.61	2.39296G	-38.66	2.4859G	-33.81	24.33532G	-38.38	1
2452MHz	Pass	2.43206G	16.48	-13.52	2.30397G	-46.85	2.39568G	-38.61	2.48542G	-32.45	24.51762G	-38.14	2
2452MHz	Pass	2.43206G	16.48	-13.52	831.5M	-46.05	2.39872G	-38.11	2.48446G	-30.99	16.92566G	-38.44	3
2452MHz	Pass	2.43206G	16.48	-13.52	663.19M	-46.18	2.39536G	-39.55	2.48398G	-31.89	16.46011G	-38.15	4







## CSE Non-restricted Band Result

Appendix E.15

### For Non-beamforming / 4T4S mode Summary

Mode	Result	Ref (Hz)	Ref (dBm)	Limit (dBm)	Freq (Hz)	Level (dBm)	Freq (Hz)	Level (dBm)	Freq (Hz)	Level (dBm)	Freq (Hz)	Level (dBm)	Port
2.4-2.4835GHz	-	-	-	-	-	-	-	-	-	-	-	-	-
802.11ax HEW20_Nss4,(MCS0)_4TX	Pass	2.43073G	6.74	-23.26	468.04M	-44.54	2.39598G	-44.47	2.52346G	-43.47	24.83705G	-34.51	1
802.11ax HEW40_Nss4,(MCS0)_4TX	Pass	2.43198G	-0.60	-30.60	1.85542G	-43.26	2.39428G	-44.02	2.48994G	-43.87	24.84014G	-35.28	3

### Result

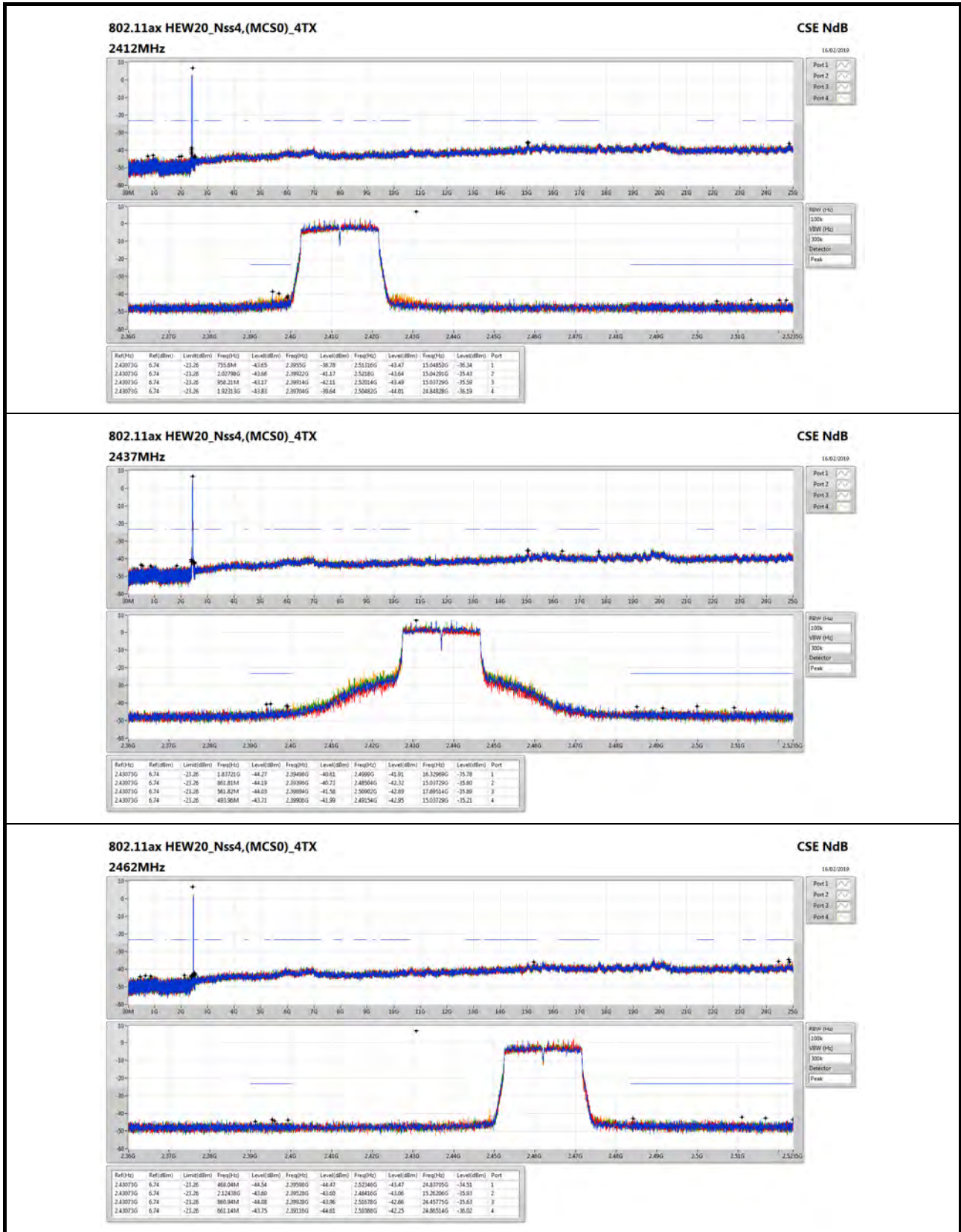
Mode	Result	Ref (Hz)	Ref (dBm)	Limit (dBm)	Freq (Hz)	Level (dBm)	Freq (Hz)	Level (dBm)	Freq (Hz)	Level (dBm)	Freq (Hz)	Level (dBm)	Port
802.11ax HEW20_Nss4,(MCS0)_4TX	-	-	-	-	-	-	-	-	-	-	-	-	-
2412MHz	Pass	2.43073G	6.74	-23.26	755.8M	-43.65	2.3955G	-38.78	2.51316G	-43.47	15.04853G	-36.34	1
2412MHz	Pass	2.43073G	6.74	-23.26	2.02798G	-43.66	2.39922G	-41.17	2.5218G	-43.64	15.04291G	-35.43	2
2412MHz	Pass	2.43073G	6.74	-23.26	958.21M	-43.17	2.39914G	-42.11	2.52014G	-43.49	15.03729G	-35.59	3
2412MHz	Pass	2.43073G	6.74	-23.26	1.92313G	-43.83	2.39704G	-39.64	2.50482G	-44.01	24.84828G	-36.19	4
2437MHz	Pass	2.43073G	6.74	-23.26	1.83721G	-44.27	2.39498G	-40.61	2.4999G	-41.91	16.32969G	-35.78	1
2437MHz	Pass	2.43073G	6.74	-23.26	861.81M	-44.19	2.39396G	-40.73	2.48504G	-42.32	15.03729G	-35.80	2
2437MHz	Pass	2.43073G	6.74	-23.26	561.82M	-44.03	2.39894G	-41.58	2.50902G	-42.89	17.69514G	-35.89	3
2437MHz	Pass	2.43073G	6.74	-23.26	493.96M	-43.71	2.39908G	-41.99	2.49154G	-42.95	15.03729G	-35.21	4
2462MHz	Pass	2.43073G	6.74	-23.26	468.04M	-44.54	2.39598G	-44.47	2.52346G	-43.47	24.83705G	-34.51	1
2462MHz	Pass	2.43073G	6.74	-23.26	2.12438G	-43.60	2.39528G	-43.60	2.48416G	-43.06	15.26206G	-35.93	2
2462MHz	Pass	2.43073G	6.74	-23.26	860.94M	-44.08	2.39928G	-43.96	2.51678G	-42.66	24.45775G	-35.63	3
2462MHz	Pass	2.43073G	6.74	-23.26	661.14M	-43.75	2.39116G	-44.61	2.51088G	-42.25	24.86514G	-36.02	4
802.11ax HEW40_Nss4,(MCS0)_4TX	-	-	-	-	-	-	-	-	-	-	-	-	-
2422MHz	Pass	2.43198G	-0.60	-30.60	1.82278G	-43.99	2.3996G	-43.52	2.54758G	-43.78	17.6829G	-36.03	1
2422MHz	Pass	2.43198G	-0.60	-30.60	955.45M	-44.18	2.39772G	-43.62	2.4839G	-43.87	16.57509G	-36.10	2
2422MHz	Pass	2.43198G	-0.60	-30.60	2.07297G	-43.99	2.39812G	-45.01	2.48982G	-43.51	23.48273G	-36.05	3
2422MHz	Pass	2.43198G	-0.60	-30.60	1.81248G	-43.82	2.393G	-43.89	2.54114G	-43.53	16.99858G	-35.55	4
2437MHz	Pass	2.43198G	-0.60	-30.60	1.82908G	-43.83	2.39952G	-44.12	2.48942G	-43.53	15.2906G	-36.35	1
2437MHz	Pass	2.43198G	-0.60	-30.60	586.47M	-44.36	2.3988G	-42.82	2.48794G	-43.44	17.69131G	-36.17	2
2437MHz	Pass	2.43198G	-0.60	-30.60	1.85542G	-43.26	2.39428G	-44.02	2.48994G	-43.87	24.84014G	-35.28	3
2437MHz	Pass	2.43198G	-0.60	-30.60	959.45M	-43.67	2.39952G	-41.91	2.4881G	-43.21	16.97615G	-35.65	4
2452MHz	Pass	2.43198G	-0.60	-30.60	565M	-43.87	2.399G	-44.60	2.48714G	-42.83	15.01576G	-36.15	1
2452MHz	Pass	2.43198G	-0.60	-30.60	2.15941G	-44.21	2.39304G	-43.69	2.4855G	-43.18	17.09955G	-35.69	2
2452MHz	Pass	2.43198G	-0.60	-30.60	805.45M	-43.25	2.39208G	-45.14	2.51714G	-43.81	16.26379G	-35.74	3
2452MHz	Pass	2.43198G	-0.60	-30.60	771.67M	-43.26	2.39436G	-44.16	2.50394G	-43.09	16.43206G	-35.77	4





# CSE Non-restricted Band Result

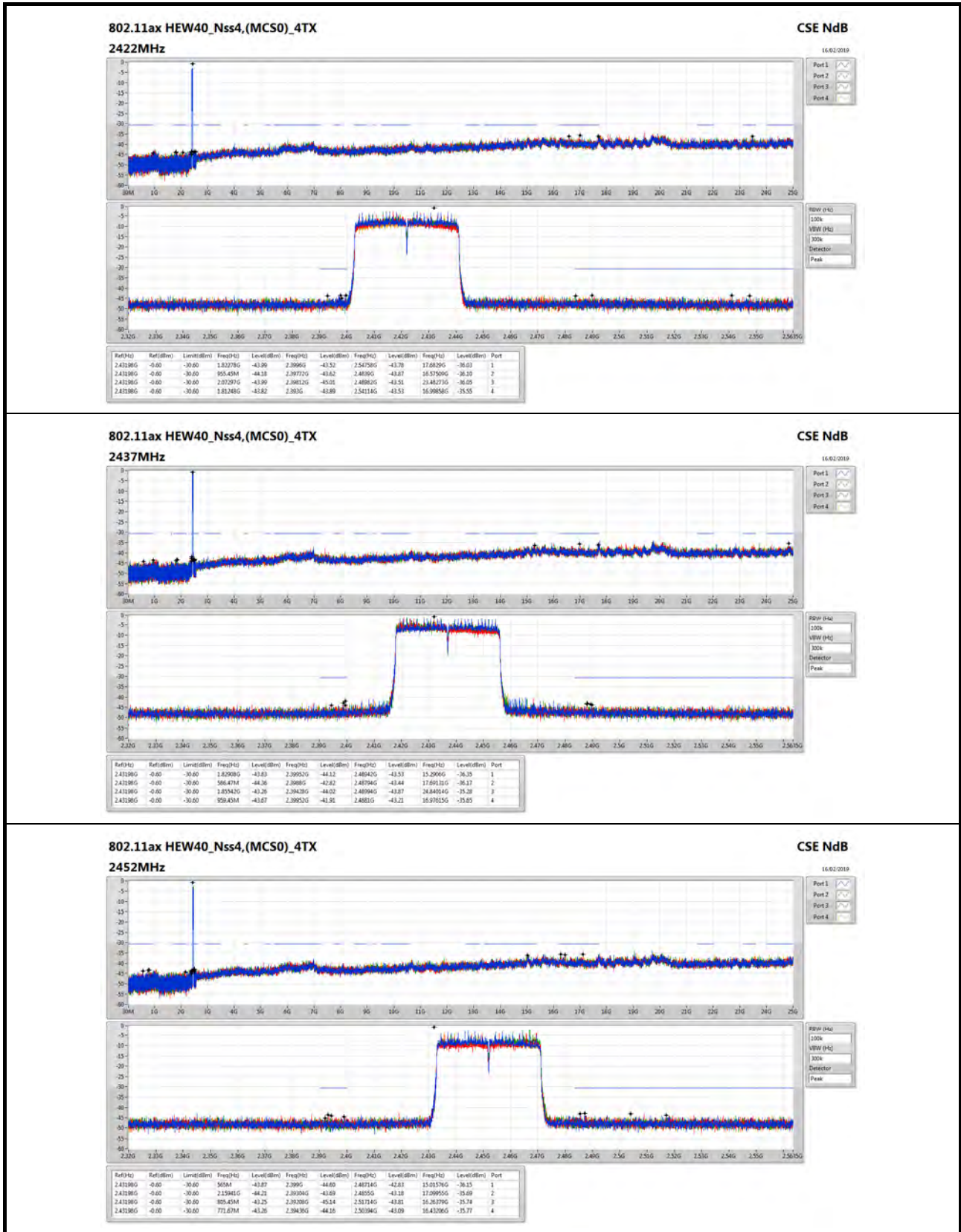
Appendix E.15





# CSE Non-restricted Band Result

Appendix E.15



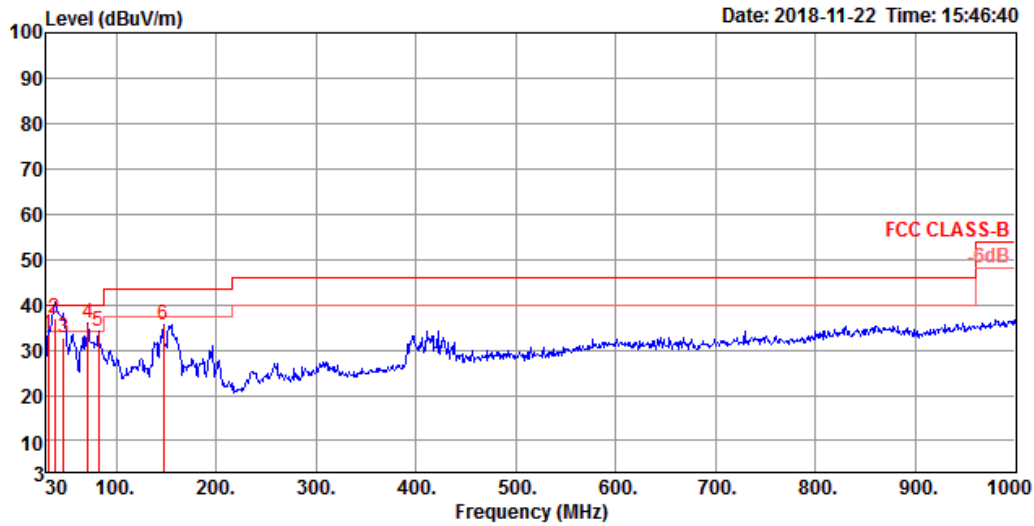


# Radiated Emission below 1GHz Result

Appendix F.1

<b>Test Mode</b>	Mode 7	<b>Frequency Range</b>	30 MHz to 1,000 MHz
------------------	--------	------------------------	---------------------

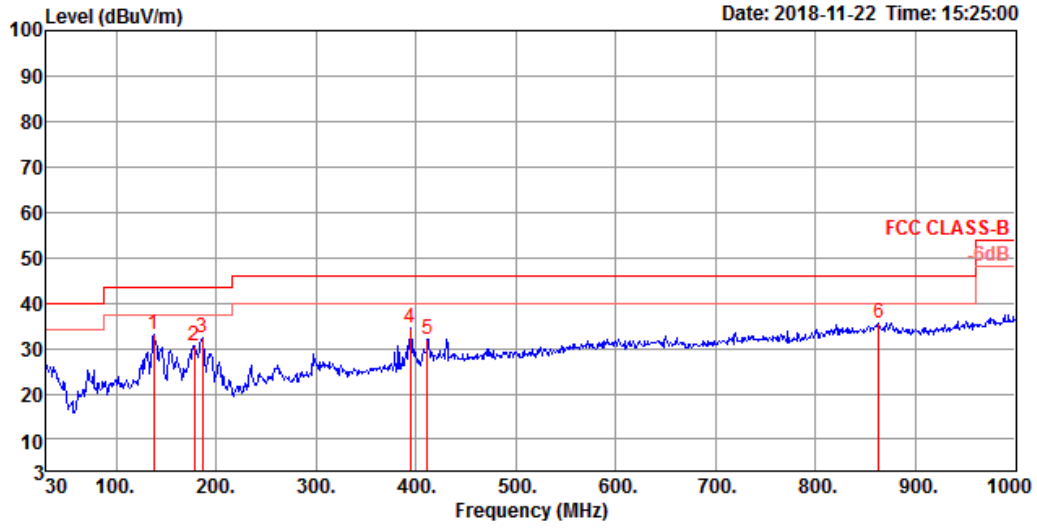
## Vertical 30 MHz to 1,000 MHz



	Freq	Level	Limit Line	Over Limit	Read Level	CableAntenna Loss	Preamp Factor	A/Pos	T/Pos	Remark	Pol/Phase
	MHz	dBuV/m	dBuV/m	dB	dBuV	dB	dB/m	dB	cm	deg	
1	31.94	33.45	40.00	-6.55	42.29	0.67	23.09	32.60	100	53 QP	VERTICAL
2	38.73	36.93	40.00	-3.07	49.50	0.88	19.15	32.60	100	2 QP	VERTICAL
3	47.46	32.60	40.00	-7.40	49.20	0.98	15.01	32.59	112	21 QP	VERTICAL
4	71.71	35.89	40.00	-4.11	55.23	1.18	12.05	32.57	200	71 Peak	VERTICAL
5	82.38	34.00	40.00	-6.00	52.20	1.30	13.06	32.56	125	144 Peak	VERTICAL
6	147.37	35.60	43.50	-7.90	49.68	1.89	16.54	32.51	125	218 Peak	VERTICAL



Horizontal 30 MHz to 1,000 MHz



	Freq	Level	Limit	Over	Read	CableAntenna	Preamp	A/Pos	T/Pos	Remark	PoI/Phase
	MHz	dBuV/m	dBuV/m	dB	dBuV	dB	dB/m	dB	cm	deg	
1	137.67	33.10	43.50	-10.40	46.51	1.87	17.24	32.52	300	272 Peak	HORIZONTAL
2	178.41	30.71	43.50	-12.79	46.07	2.04	15.09	32.49	200	210 Peak	HORIZONTAL
3	186.17	32.24	43.50	-11.26	47.76	2.11	14.86	32.49	200	193 Peak	HORIZONTAL
4	394.72	34.53	46.00	-11.47	42.23	3.51	21.23	32.44	125	287 Peak	HORIZONTAL
5	411.21	32.09	46.00	-13.91	38.97	3.59	21.97	32.44	125	271 Peak	HORIZONTAL
6	863.23	35.74	46.00	-10.26	35.73	5.95	26.07	32.01	100	34 Peak	HORIZONTAL





**RSE TX above 1GHz Result\_Radiated Emission**

Appendix F.2

**For Mode 1: (Ant. 4 Omni antenna / 3 dBi)  
For Non-beamforming / 4T1S mode  
Summary**

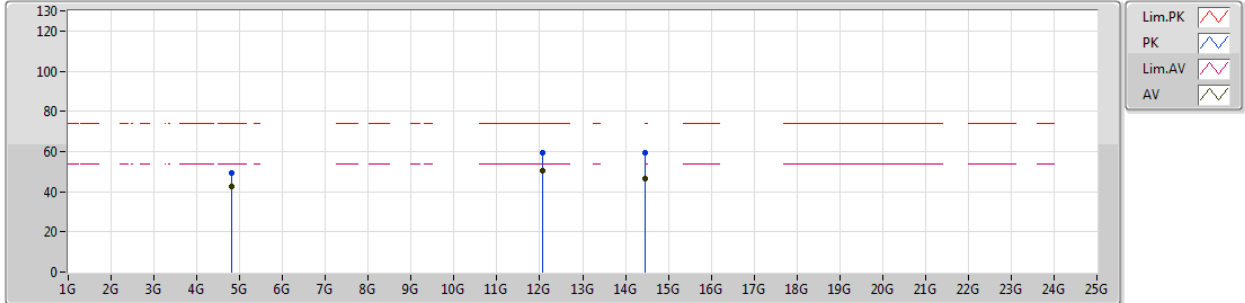
Mode	Result	Type	Freq (Hz)	Level (dBuV/m)	Limit (dBuV/m)	Margin (dB)	Factor (dB)	Dist (m)	Condition	Azimuth (°)	Height (m)	Comments
2.4-2.4835GHz	-	-	-	-	-	-	-	-	-	-	-	-
802.11b_Nss1,(1Mbps)_4TX	Pass	AV	7.31021G	53.95	54.00	-0.05	9.25	3	Vertical	46	1.62	-



802.11b\_Nss1,(1Mbps)\_4TX

22/01/2019

2412MHz\_TX



EUT Y\_4TX  
Setting 110  
01-W-3  
FSU  
ANT5

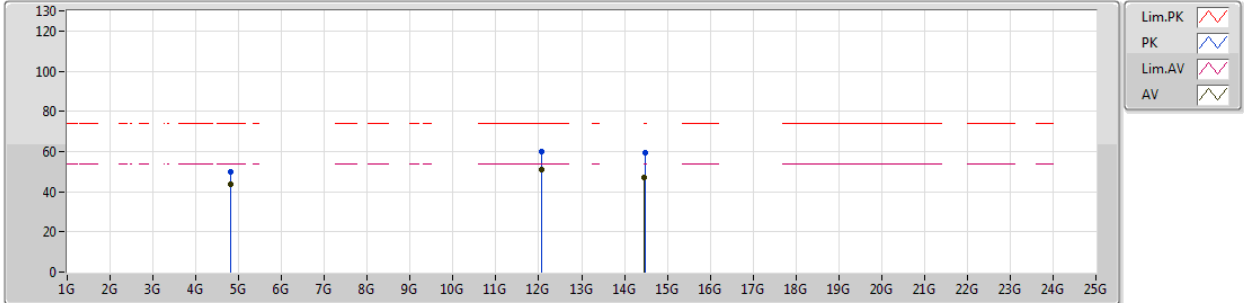
Type	Freq (Hz)	Level (dBuV/m)	Limit (dBuV/m)	Margin (dB)	Factor (dB)	Dist (m)	Condition	Azimuth (°)	Height (m)	Comments
PK	4.82383G	49.20	74.00	-24.80	3.59	3	Vertical	46	1.50	-
AV	4.82398G	42.40	54.00	-11.60	3.59	3	Vertical	46	1.50	-
PK	12.05954G	59.46	74.00	-14.54	12.33	3	Vertical	226	1.25	-
AV	12.06068G	50.22	54.00	-3.78	12.33	3	Vertical	226	1.25	-
PK	14.47205G	59.20	74.00	-14.80	16.29	3	Vertical	119	1.01	-
AV	14.47198G	46.27	54.00	-7.73	16.29	3	Vertical	119	1.01	-



802.11b\_Nss1,(1Mbps)\_4TX

22/01/2019

2412MHz\_TX



EUT Y\_4TX  
Setting 110  
01-W-3  
FSU  
ANT5

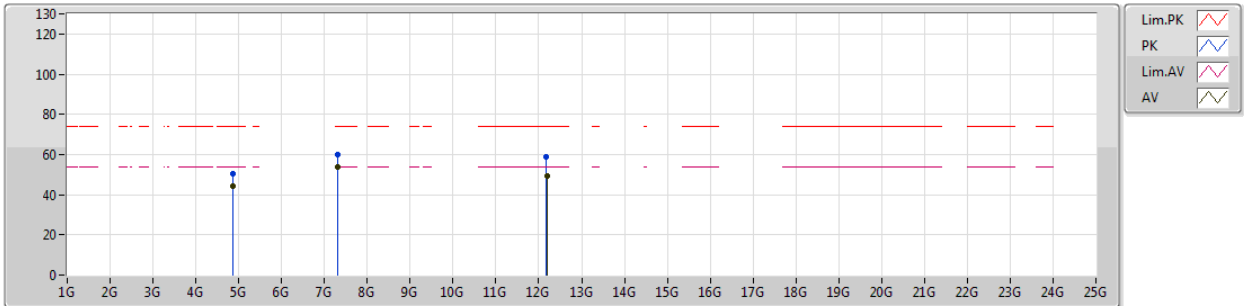
Type	Freq (Hz)	Level (dBuV/m)	Limit (dBuV/m)	Margin (dB)	Factor (dB)	Dist (m)	Condition	Azimuth (°)	Height (m)	Comments
PK	4.82398G	49.92	74.00	-24.08	3.59	3	Horizontal	298	1.72	-
AV	4.82398G	43.87	54.00	-10.13	3.59	3	Horizontal	298	1.72	-
PK	12.06068G	59.77	74.00	-14.23	12.33	3	Horizontal	107	1.72	-
AV	12.06067G	51.06	54.00	-2.94	12.33	3	Horizontal	107	1.72	-
PK	14.47213G	59.36	74.00	-14.64	16.29	3	Horizontal	157	1.50	-
AV	14.4719G	47.05	54.00	-6.95	16.29	3	Horizontal	157	1.50	-



802.11b\_Nss1,(1Mbps)\_4TX

22/01/2019

2437MHz\_TX



EUT Y\_4TX  
Setting 89  
01-W-3  
FSU  
ANT5

Type	Freq (Hz)	Level (dBuV/m)	Limit (dBuV/m)	Margin (dB)	Factor (dB)	Dist (m)	Condition	Azimuth (°)	Height (m)	Comments
PK	4.87389G	50.47	74.00	-23.53	3.81	3	Vertical	53	1.68	-
AV	4.87398G	44.48	54.00	-9.52	3.81	3	Vertical	53	1.68	-
PK	7.31G	60.08	74.00	-13.92	9.25	3	Vertical	46	1.62	-
AV	7.31021G	53.95	54.00	-0.05	9.25	3	Vertical	46	1.62	-
PK	12.18439G	58.71	74.00	-15.29	12.68	3	Vertical	147	1.50	-
AV	12.18561G	49.12	54.00	-4.88	12.68	3	Vertical	147	1.50	-

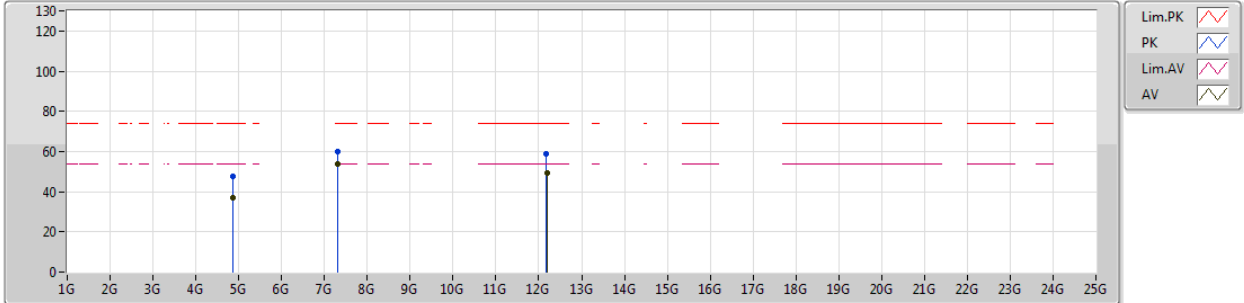




802.11b\_Nss1,(1Mbps)\_4TX

22/01/2019

2437MHz\_TX



EUT Y\_4TX  
Setting 89  
01-W-3  
FSU  
ANT5

Type	Freq (Hz)	Level (dBuV/m)	Limit (dBuV/m)	Margin (dB)	Factor (dB)	Dist (m)	Condition	Azimuth (°)	Height (m)	Comments
PK	4.87405G	47.36	74.00	-26.64	3.81	3	Horizontal	45	1.14	-
AV	4.87399G	37.22	54.00	-16.78	3.81	3	Horizontal	45	1.14	-
PK	7.30954G	59.71	74.00	-14.29	9.25	3	Horizontal	184	1.55	-
AV	7.30971G	53.86	54.00	-0.14	9.25	3	Horizontal	184	1.55	-
PK	12.18389G	58.77	74.00	-15.23	12.68	3	Horizontal	120	1.46	-
AV	12.18568G	49.11	54.00	-4.89	12.68	3	Horizontal	120	1.46	-