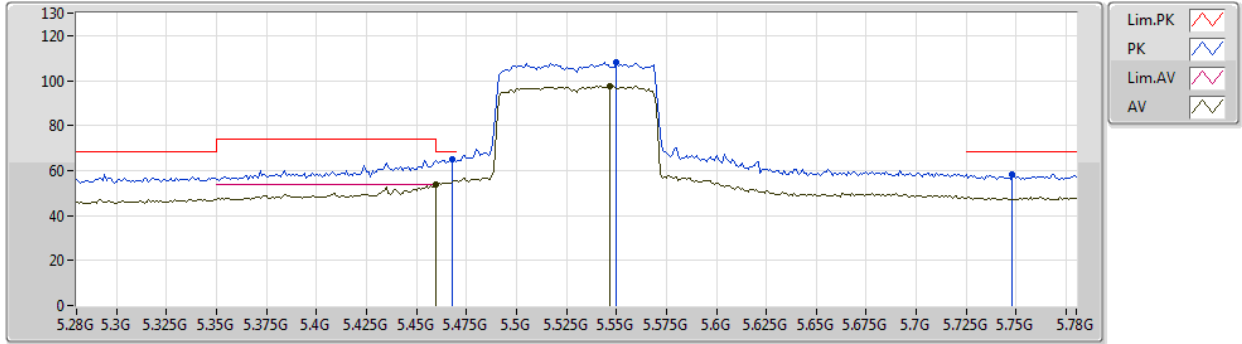




802.11ax HEW80_Nss2,(MCS0)_2TX

03/01/2020

5530MHz_TX



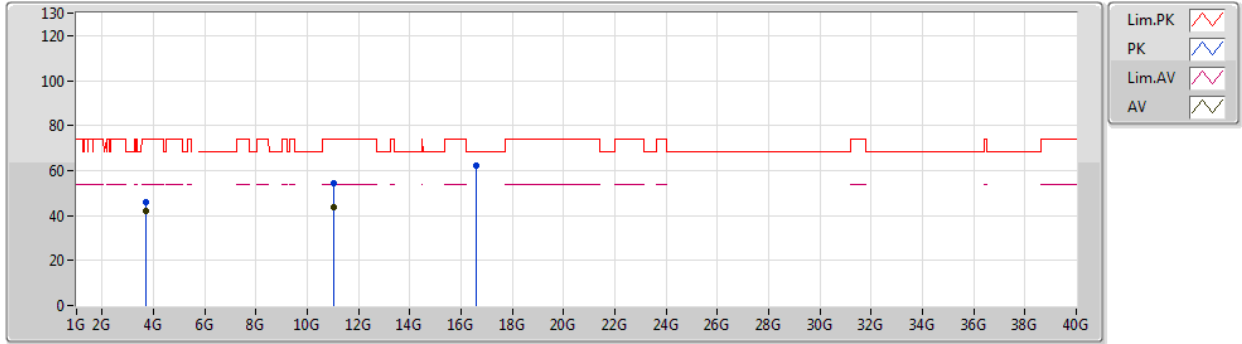
Type	Freq (Hz)	Level (dBuV/m)	Limit (dBuV/m)	Margin (dB)	Factor (dB)	Dist (m)	Condition	Azimuth (°)	Height (m)	Comment	Raw (dBuV)	AF (dB)	CL (dB)	PA (dB)
AV	5.46G	53.71	54.00	-0.29	5.32	3	Vertical	45	1.69	-	48.39	31.82	7.41	33.91
AV	5.547G	97.48	Inf	-Inf	5.19	3	Vertical	45	1.69	-	92.29	31.90	7.22	33.93
PK	5.468G	65.05	68.20	-3.15	5.32	3	Vertical	45	1.69	-	59.73	31.84	7.39	33.91
PK	5.55G	108.42	Inf	-Inf	5.18	3	Vertical	45	1.69	-	103.24	31.90	7.21	33.93
PK	5.748G	58.01	68.20	-10.19	5.86	3	Vertical	45	1.69	-	52.15	32.09	7.73	33.96



802.11ax HEW80_Nss2,(MCS0)_2TX

03/01/2020

5530MHz_TX



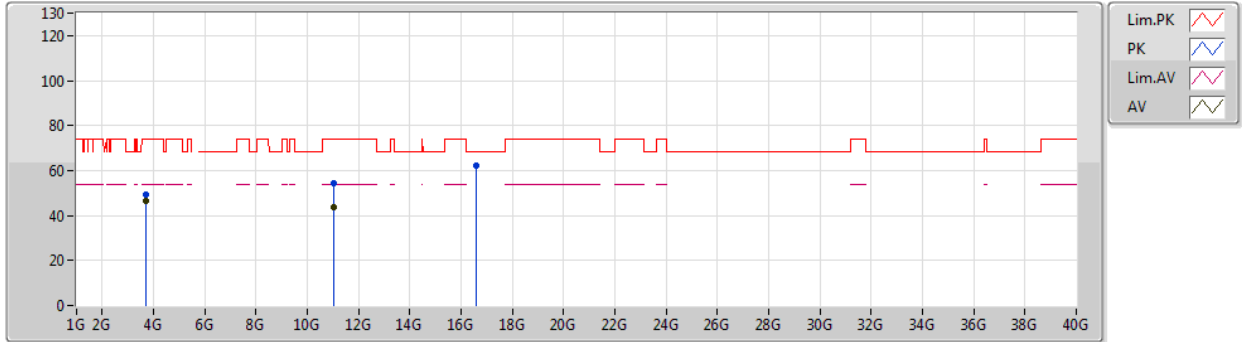
Type	Freq (Hz)	Level (dBuV/m)	Limit (dBuV/m)	Margin (dB)	Factor (dB)	Dist (m)	Condition	Azimuth (°)	Height (m)	Comment	Raw (dBuV)	AF (dB)	CL (dB)	PA (dB)
AV	3.68667G	41.78	54.00	-12.22	1.27	3	Vertical	227	1.71	-	40.51	29.30	6.05	34.08
AV	11.05154G	43.79	54.00	-10.21	17.44	3	Vertical	52	1.29	-	26.35	40.05	11.23	33.84
PK	3.68672G	45.98	74.00	-28.02	1.27	3	Vertical	227	1.71	-	44.71	29.30	6.05	34.08
PK	11.04626G	54.46	74.00	-19.54	17.45	3	Vertical	52	1.29	-	37.01	40.06	11.23	33.84
PK	16.58412G	62.16	68.20	-6.04	20.61	3	Vertical	224	1.33	-	41.55	38.84	13.80	32.03



802.11ax HEW80_Nss2,(MCS0)_2TX

03/01/2020

5530MHz_TX



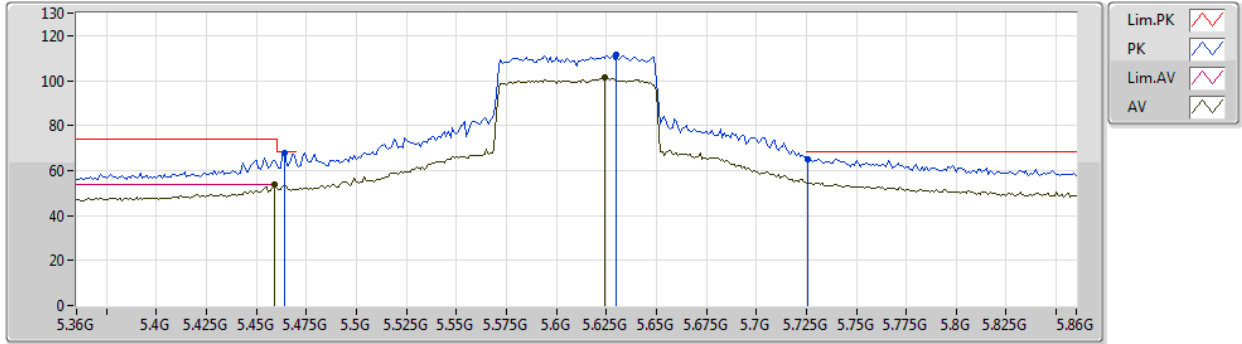
Type	Freq (Hz)	Level (dBuV/m)	Limit (dBuV/m)	Margin (dB)	Factor (dB)	Dist (m)	Condition	Azimuth (°)	Height (m)	Comment	Raw (dBuV)	AF (dB)	CL (dB)	PA (dB)
AV	3.68668G	46.27	54.00	-7.73	1.27	3	Horizontal	7	1.48	-	45.00	29.30	6.05	34.08
AV	11.05142G	43.88	54.00	-10.12	17.44	3	Horizontal	249	1.32	-	26.44	40.05	11.23	33.84
PK	3.68666G	49.14	74.00	-24.86	1.27	3	Horizontal	7	1.48	-	47.87	29.30	6.05	34.08
PK	11.05316G	54.57	74.00	-19.43	17.43	3	Horizontal	249	1.32	-	37.14	40.04	11.23	33.84
PK	16.5783G	61.98	68.20	-6.22	20.57	3	Horizontal	336	2.08	-	41.41	38.81	13.80	32.04



802.11ax HEW80_Nss2,(MCS0)_2TX

03/01/2020

5610MHz_TX



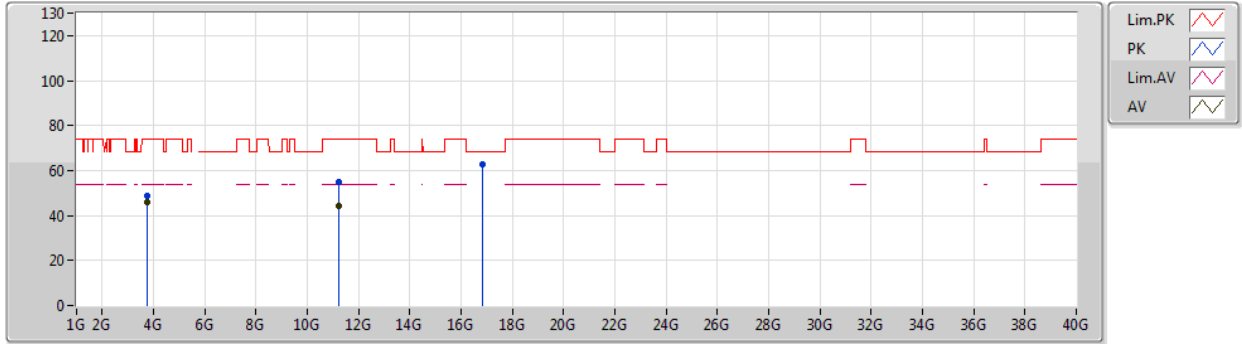
Type	Freq (Hz)	Level (dBuV/m)	Limit (dBuV/m)	Margin (dB)	Factor (dB)	Dist (m)	Condition	Azimuth (°)	Height (m)	Comment	Raw (dBuV)	AF (dB)	CL (dB)	PA (dB)
AV	5.459G	53.80	54.00	-0.20	5.32	3	Vertical	42	1.78	-	48.48	31.82	7.41	33.91
AV	5.624G	101.29	Inf	-Inf	5.06	3	Vertical	42	1.78	-	96.23	31.80	7.20	33.94
PK	5.464G	67.69	68.20	-0.51	5.32	3	Vertical	42	1.78	-	62.37	31.83	7.40	33.91
PK	5.63G	111.66	Inf	-Inf	5.09	3	Vertical	42	1.78	-	106.57	31.80	7.23	33.94
PK	5.726G	65.01	68.20	-3.19	5.68	3	Vertical	42	1.78	-	59.33	32.00	7.64	33.96



802.11ax HEW80_Nss2,(MCS0)_2TX

03/01/2020

5610MHz_TX



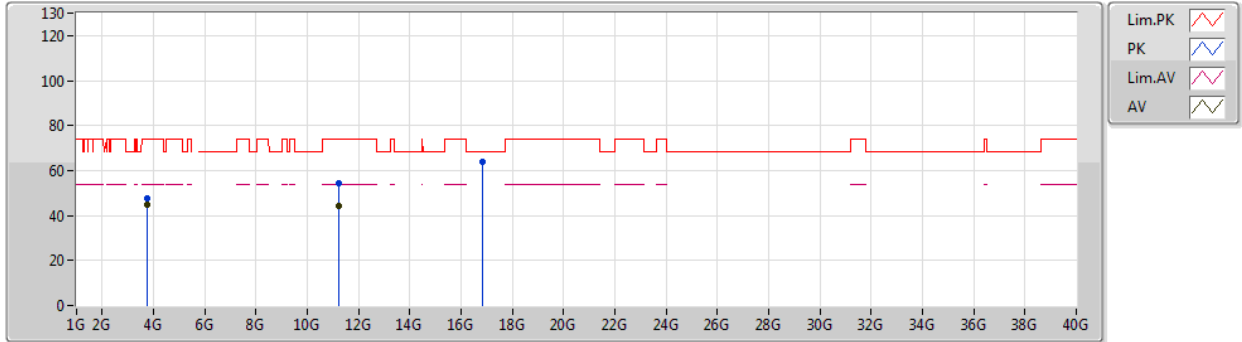
Type	Freq (Hz)	Level (dBuV/m)	Limit (dBuV/m)	Margin (dB)	Factor (dB)	Dist (m)	Condition	Azimuth (°)	Height (m)	Comment	Raw (dBuV)	AF (dB)	CL (dB)	PA (dB)
AV	3.73999G	45.73	54.00	-8.27	1.38	3	Vertical	340	2.92	-	44.35	29.38	6.06	34.06
AV	11.22198G	44.18	54.00	-9.82	17.27	3	Vertical	137	1.45	-	26.91	39.70	11.38	33.81
PK	3.74G	48.62	74.00	-25.38	1.38	3	Vertical	340	2.92	-	47.24	29.38	6.06	34.06
PK	11.21424G	54.72	74.00	-19.28	17.25	3	Vertical	137	1.45	-	37.47	39.70	11.37	33.82
PK	16.815G	62.79	68.20	-5.41	22.09	3	Vertical	267	2.20	-	40.70	39.72	13.97	31.60



802.11ax HEW80_Nss2,(MCS0)_2TX

03/01/2020

5610MHz_TX



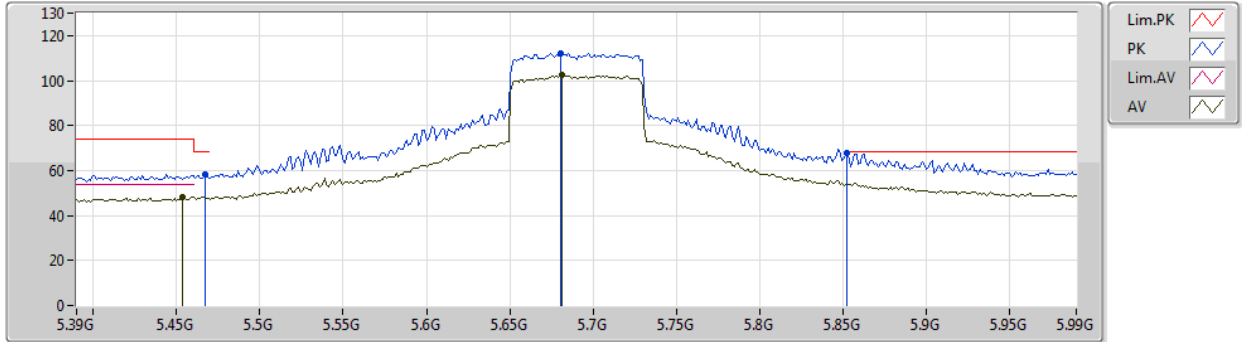
Type	Freq (Hz)	Level (dBuV/m)	Limit (dBuV/m)	Margin (dB)	Factor (dB)	Dist (m)	Condition	Azimuth (°)	Height (m)	Comment	Raw (dBuV)	AF (dB)	CL (dB)	PA (dB)
AV	3.73999G	44.97	54.00	-9.03	1.38	3	Horizontal	9	1.53	-	43.59	29.38	6.06	34.06
AV	11.23434G	44.33	54.00	-9.67	17.28	3	Horizontal	173	2.23	-	27.05	39.70	11.39	33.81
PK	3.74G	47.83	74.00	-26.17	1.38	3	Horizontal	9	1.53	-	46.45	29.38	6.06	34.06
PK	11.208G	54.62	74.00	-19.38	17.25	3	Horizontal	173	2.23	-	37.37	39.70	11.37	33.82
PK	16.84302G	63.64	68.20	-4.56	22.18	3	Horizontal	295	2.00	-	41.46	39.74	13.99	31.55



802.11ax HEW80_Nss2,(MCS0)_2TX

02/01/2020

5690MHz Straddle 5.47-5.725GHz_TX



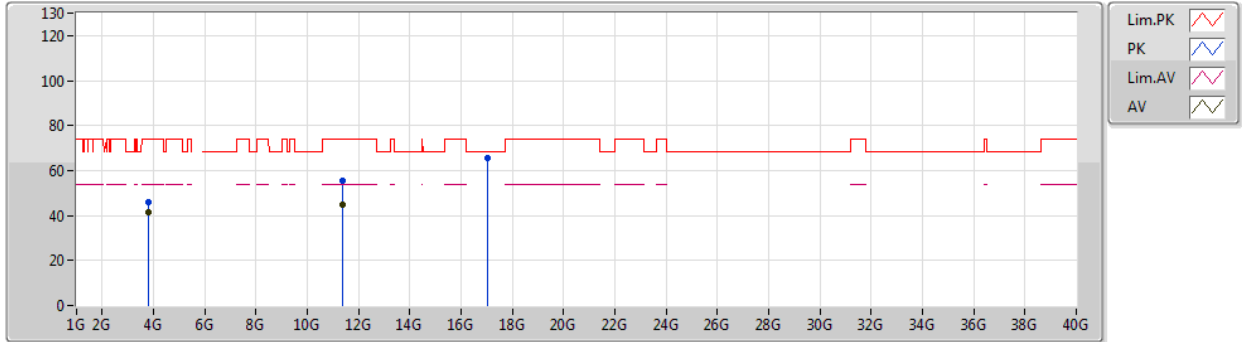
Type	Freq (Hz)	Level (dBuV/m)	Limit (dBuV/m)	Margin (dB)	Factor (dB)	Dist (m)	Condition	Azimuth (°)	Height (m)	Comment	Raw (dBuV)	AF (dB)	CL (dB)	PA (dB)
AV	5.4536G	48.10	54.00	-5.90	5.32	3	Vertical	44	1.70	-	42.78	31.81	7.42	33.91
AV	5.6816G	102.29	Inf	-Inf	5.36	3	Vertical	44	1.70	-	96.93	31.86	7.45	33.95
PK	5.4668G	58.36	68.20	-9.84	5.31	3	Vertical	44	1.70	-	53.05	31.83	7.39	33.91
PK	5.6804G	112.15	Inf	-Inf	5.35	3	Vertical	44	1.70	-	106.80	31.86	7.44	33.95
PK	5.852G	67.84	68.20	-0.36	6.51	3	Vertical	44	1.70	-	61.33	32.40	8.09	33.98



802.11ax HEW80_Nss2,(MCS0)_2TX

02/01/2020

5690MHz Straddle 5.47-5.725GHz_TX



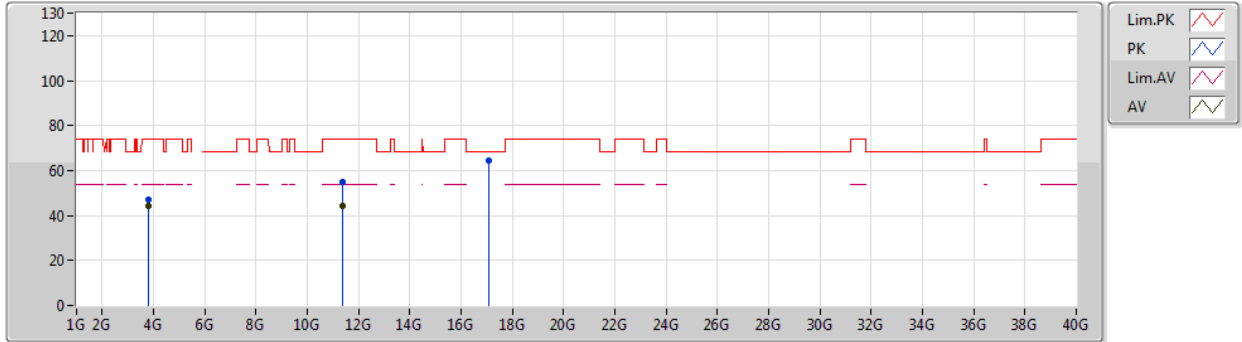
Type	Freq (Hz)	Level (dBuV/m)	Limit (dBuV/m)	Margin (dB)	Factor (dB)	Dist (m)	Condition	Azimuth (°)	Height (m)	Comment	Raw (dBuV)	AF (dB)	CL (dB)	PA (dB)
AV	3.79335G	41.74	54.00	-12.26	1.51	3	Vertical	173	1.46	-	40.23	29.49	6.07	34.05
AV	11.36758G	44.79	54.00	-9.21	17.56	3	Vertical	193	1.77	-	27.23	39.84	11.51	33.79
PK	3.79321G	45.92	74.00	-28.08	1.51	3	Vertical	173	1.46	-	44.41	29.49	6.07	34.05
PK	11.36656G	55.52	74.00	-18.48	17.55	3	Vertical	193	1.77	-	37.97	39.83	11.51	33.79
PK	17.05554G	65.29	68.20	-2.91	22.81	3	Vertical	26	1.49	-	42.48	39.94	14.14	31.27



802.11ax HEW80_Nss2,(MCS0)_2TX

02/01/2020

5690MHz Straddle 5.47-5.725GHz_TX



Type	Freq (Hz)	Level (dBuV/m)	Limit (dBuV/m)	Margin (dB)	Factor (dB)	Dist (m)	Condition	Azimuth (°)	Height (m)	Comment	Raw (dBuV)	AF (dB)	CL (dB)	PA (dB)
AV	3.79333G	44.22	54.00	-9.78	1.51	3	Horizontal	7	1.35	-	42.71	29.49	6.07	34.05
AV	11.38366G	44.31	54.00	-9.69	17.60	3	Horizontal	177	2.49	-	26.71	39.87	11.52	33.79
PK	3.79332G	47.27	74.00	-26.73	1.51	3	Horizontal	7	1.35	-	45.76	29.49	6.07	34.05
PK	11.36782G	54.81	74.00	-19.19	17.56	3	Horizontal	177	2.49	-	37.25	39.84	11.51	33.79
PK	17.05836G	64.39	68.20	-3.81	22.81	3	Horizontal	116	2.62	-	41.58	39.94	14.14	31.27



Summary

Mode	Result	Type	Freq (Hz)	Level (dBuV/m)	Limit (dBuV/m)	Margin (dB)	Dist (m)	Condition	Azimuth (°)	Height (m)	Comments
5.25-5.35GHz	-	-	-	-	-	-	-	-	-	-	-
802.11a_Nss1,(6Mbps)_1TX	Pass	AV	5.362G	53.68	54.00	-0.32	3	Horizontal	355	1.72	-
802.11ax HEW20_Nss1,(MCS0)_1TX	Pass	PK	5.3542G	73.59	74.00	-0.41	3	Horizontal	356	1.50	-
802.11ax HEW40_Nss1,(MCS0)_1TX	Pass	AV	5.35G	53.18	54.00	-0.82	3	Horizontal	356	1.48	-
802.11ax HEW80_Nss1,(MCS0)_1TX	Pass	AV	5.353G	53.32	54.00	-0.68	3	Horizontal	357	1.50	-
5.47-5.725GHz	-	-	-	-	-	-	-	-	-	-	-
802.11a_Nss1,(6Mbps)_1TX	Pass	PK	5.4694G	67.80	68.20	-0.40	3	Horizontal	360	1.63	-
802.11ax HEW20_Nss1,(MCS0)_1TX	Pass	PK	5.4652G	68.02	68.20	-0.18	3	Horizontal	0	1.43	-
802.11ax HEW40_Nss1,(MCS0)_1TX	Pass	PK	5.8504G	68.04	68.20	-0.16	3	Horizontal	357	1.48	-
802.11ax HEW80_Nss1,(MCS0)_1TX	Pass	AV	5.459G	53.78	54.00	-0.22	3	Horizontal	351	1.49	-



**RSE TX above 1GHz_Non-Beamforming_
Sample 2_Radio 1_Panel 1_1T1S**

Appendix D.7

Result

Mode	Result	Type	Freq (Hz)	Level (dBuV/m)	Limit (dBuV/m)	Margin (dB)	Dist (m)	Condition	Azimuth (°)	Height (m)	Comments
802.11a_Nss1,(6Mbps)_1TX	-	-	-	-	-	-	-	-	-	-	-
5260MHz	Pass	AV	5.149G	44.89	54.00	-9.11	3	Vertical	300	2.89	-
5260MHz	Pass	AV	5.2618G	97.97	Inf	-Inf	3	Vertical	300	2.89	-
5260MHz	Pass	AV	5.353G	44.84	54.00	-9.16	3	Vertical	300	2.89	-
5260MHz	Pass	PK	5.149G	57.90	74.00	-16.10	3	Vertical	300	2.89	-
5260MHz	Pass	PK	5.2576G	108.10	Inf	-Inf	3	Vertical	300	2.89	-
5260MHz	Pass	PK	5.3518G	57.66	74.00	-16.34	3	Vertical	300	2.89	-
5260MHz	Pass	AV	5.1484G	48.79	54.00	-5.21	3	Horizontal	355	1.72	-
5260MHz	Pass	AV	5.2624G	111.75	Inf	-Inf	3	Horizontal	355	1.72	-
5260MHz	Pass	AV	5.362G	53.68	54.00	-0.32	3	Horizontal	355	1.72	-
5260MHz	Pass	PK	5.1472G	63.66	74.00	-10.34	3	Horizontal	355	1.72	-
5260MHz	Pass	PK	5.2648G	122.18	Inf	-Inf	3	Horizontal	355	1.72	-
5260MHz	Pass	PK	5.3566G	68.75	74.00	-5.25	3	Horizontal	355	1.72	-
5260MHz	Pass	AV	3.50664G	41.33	54.00	-12.67	3	Vertical	54	1.69	-
5260MHz	Pass	AV	15.77832G	46.35	54.00	-7.65	3	Vertical	11	1.49	-
5260MHz	Pass	PK	3.50664G	46.23	74.00	-27.77	3	Vertical	54	1.69	-
5260MHz	Pass	PK	10.5176G	59.93	68.20	-8.27	3	Vertical	356	1.57	-
5260MHz	Pass	PK	15.7704G	59.37	74.00	-14.63	3	Vertical	11	1.49	-
5260MHz	Pass	AV	3.50665G	42.58	54.00	-11.42	3	Horizontal	121	1.61	-
5260MHz	Pass	AV	15.7794G	47.19	54.00	-6.81	3	Horizontal	334	1.55	-
5260MHz	Pass	PK	3.50674G	47.22	74.00	-26.78	3	Horizontal	121	1.61	-
5260MHz	Pass	PK	10.51742G	59.65	68.20	-8.55	3	Horizontal	340	1.50	-
5260MHz	Pass	PK	15.77556G	60.53	74.00	-13.47	3	Horizontal	334	1.55	-
5300MHz	Pass	AV	5.294G	90.17	Inf	-Inf	3	Vertical	108	2.83	-
5300MHz	Pass	AV	5.35G	44.09	54.00	-9.91	3	Vertical	108	2.83	-
5300MHz	Pass	PK	5.2934G	100.06	Inf	-Inf	3	Vertical	108	2.83	-
5300MHz	Pass	PK	5.423G	56.66	74.00	-17.34	3	Vertical	108	2.83	-
5300MHz	Pass	AV	5.3018G	109.02	Inf	-Inf	3	Horizontal	352	1.50	-
5300MHz	Pass	AV	5.35G	51.87	54.00	-2.13	3	Horizontal	352	1.50	-
5300MHz	Pass	PK	5.3018G	119.18	Inf	-Inf	3	Horizontal	352	1.50	-
5300MHz	Pass	PK	5.35G	73.24	74.00	-0.76	3	Horizontal	352	1.50	-
5300MHz	Pass	AV	3.53334G	40.79	54.00	-13.21	3	Vertical	25	1.46	-
5300MHz	Pass	AV	10.60078G	45.84	54.00	-8.16	3	Vertical	173	1.49	-
5300MHz	Pass	AV	15.90102G	46.97	54.00	-7.03	3	Vertical	46	1.50	-
5300MHz	Pass	PK	3.53345G	45.61	74.00	-28.39	3	Vertical	25	1.46	-
5300MHz	Pass	PK	10.59784G	59.37	68.20	-8.83	3	Vertical	173	1.49	-
5300MHz	Pass	PK	15.91068G	60.28	74.00	-13.72	3	Vertical	46	1.50	-
5300MHz	Pass	AV	3.53334G	44.24	54.00	-9.76	3	Horizontal	122	1.60	-
5300MHz	Pass	AV	10.60054G	42.97	54.00	-11.03	3	Horizontal	34	1.48	-
5300MHz	Pass	AV	15.90096G	47.33	54.00	-6.67	3	Horizontal	336	1.41	-
5300MHz	Pass	PK	3.53334G	47.65	74.00	-26.35	3	Horizontal	122	1.60	-
5300MHz	Pass	PK	10.59988G	56.11	68.20	-12.09	3	Horizontal	34	1.48	-
5300MHz	Pass	PK	15.90198G	60.75	74.00	-13.25	3	Horizontal	336	1.41	-
5320MHz	Pass	AV	5.3152G	92.37	Inf	-Inf	3	Vertical	59	3.00	-
5320MHz	Pass	AV	5.35G	44.80	54.00	-9.20	3	Vertical	59	3.00	-
5320MHz	Pass	PK	5.3146G	102.12	Inf	-Inf	3	Vertical	59	3.00	-
5320MHz	Pass	PK	5.3506G	60.35	74.00	-13.65	3	Vertical	59	3.00	-
5320MHz	Pass	AV	5.3242G	105.18	Inf	-Inf	3	Horizontal	353	1.60	-



**RSE TX above 1GHz_Non-Beamforming_
Sample 2_Radio 1_Panel 1_1T1S**

Appendix D.7

Mode	Result	Type	Freq (Hz)	Level (dBuV/m)	Limit (dBuV/m)	Margin (dB)	Dist (m)	Condition	Azimuth (°)	Height (m)	Comments
5320MHz	Pass	AV	5.35G	50.90	54.00	-3.10	3	Horizontal	353	1.60	-
5320MHz	Pass	PK	5.3224G	115.35	Inf	-Inf	3	Horizontal	353	1.60	-
5320MHz	Pass	PK	5.35G	73.11	74.00	-0.89	3	Horizontal	353	1.60	-
5320MHz	Pass	AV	3.54659G	41.31	54.00	-12.69	3	Vertical	24	1.50	-
5320MHz	Pass	AV	10.64024G	42.57	54.00	-11.43	3	Vertical	172	1.47	-
5320MHz	Pass	AV	15.97212G	47.09	54.00	-6.91	3	Vertical	183	1.49	-
5320MHz	Pass	PK	3.54656G	46.21	74.00	-27.79	3	Vertical	24	1.50	-
5320MHz	Pass	PK	10.63694G	55.81	74.00	-18.19	3	Vertical	172	1.47	-
5320MHz	Pass	PK	15.97128G	60.14	74.00	-13.86	3	Vertical	183	1.49	-
5320MHz	Pass	AV	3.54665G	44.86	54.00	-9.14	3	Horizontal	119	1.72	-
5320MHz	Pass	AV	10.6517G	41.93	54.00	-12.07	3	Horizontal	275	1.49	-
5320MHz	Pass	AV	15.95874G	46.80	54.00	-7.20	3	Horizontal	55	1.49	-
5320MHz	Pass	PK	3.54673G	48.24	74.00	-25.76	3	Horizontal	119	1.72	-
5320MHz	Pass	PK	10.62902G	56.01	74.00	-17.99	3	Horizontal	275	1.49	-
5320MHz	Pass	PK	15.97218G	60.22	74.00	-13.78	3	Horizontal	55	1.49	-
5500MHz	Pass	AV	5.3734G	44.33	54.00	-9.67	3	Vertical	108	2.60	-
5500MHz	Pass	AV	5.4982G	86.13	Inf	-Inf	3	Vertical	108	2.60	-
5500MHz	Pass	PK	5.4652G	56.26	68.20	-11.94	3	Vertical	108	2.60	-
5500MHz	Pass	PK	5.5018G	96.61	Inf	-Inf	3	Vertical	108	2.60	-
5500MHz	Pass	AV	5.3956G	47.75	54.00	-6.25	3	Horizontal	360	1.63	-
5500MHz	Pass	AV	5.5018G	103.50	Inf	-Inf	3	Horizontal	360	1.63	-
5500MHz	Pass	PK	5.4694G	67.80	68.20	-0.40	3	Horizontal	360	1.63	-
5500MHz	Pass	PK	5.5024G	113.85	Inf	-Inf	3	Horizontal	360	1.63	-
5500MHz	Pass	AV	3.66665G	43.06	54.00	-10.94	3	Vertical	18	1.48	-
5500MHz	Pass	AV	10.98896G	42.39	54.00	-11.61	3	Vertical	57	1.49	-
5500MHz	Pass	PK	3.66662G	47.37	74.00	-26.63	3	Vertical	18	1.48	-
5500MHz	Pass	PK	11.0036G	55.57	74.00	-18.43	3	Vertical	57	1.49	-
5500MHz	Pass	PK	16.49742G	62.98	68.20	-5.22	3	Vertical	287	1.49	-
5500MHz	Pass	AV	3.66665G	47.02	54.00	-6.98	3	Horizontal	125	1.38	-
5500MHz	Pass	AV	11.00132G	42.49	54.00	-11.51	3	Horizontal	267	1.48	-
5500MHz	Pass	PK	3.66664G	50.08	74.00	-23.92	3	Horizontal	125	1.38	-
5500MHz	Pass	PK	11.00768G	55.78	74.00	-18.22	3	Horizontal	267	1.48	-
5500MHz	Pass	PK	16.50018G	63.00	68.20	-5.20	3	Horizontal	154	1.23	-
5580MHz	Pass	AV	5.448G	44.05	54.00	-9.95	3	Vertical	108	2.78	-
5580MHz	Pass	AV	5.5782G	93.06	Inf	-Inf	3	Vertical	108	2.78	-
5580MHz	Pass	PK	5.4612G	56.45	68.20	-11.75	3	Vertical	108	2.78	-
5580MHz	Pass	PK	5.5752G	103.48	Inf	-Inf	3	Vertical	108	2.78	-
5580MHz	Pass	PK	5.7258G	56.95	68.20	-11.25	3	Vertical	108	2.78	-
5580MHz	Pass	AV	5.4582G	47.90	54.00	-6.10	3	Horizontal	355	1.34	-
5580MHz	Pass	AV	5.5776G	111.15	Inf	-Inf	3	Horizontal	355	1.34	-
5580MHz	Pass	PK	5.4696G	64.23	68.20	-3.97	3	Horizontal	355	1.34	-
5580MHz	Pass	PK	5.5752G	121.58	Inf	-Inf	3	Horizontal	355	1.34	-
5580MHz	Pass	PK	5.7252G	59.29	68.20	-8.91	3	Horizontal	355	1.34	-
5580MHz	Pass	AV	4.185G	38.08	54.00	-15.92	3	Vertical	20	1.48	-
5580MHz	Pass	AV	11.16036G	43.30	54.00	-10.70	3	Vertical	347	2.05	-
5580MHz	Pass	PK	4.18497G	45.28	74.00	-28.72	3	Vertical	20	1.48	-
5580MHz	Pass	PK	11.16162G	55.88	74.00	-18.12	3	Vertical	347	2.05	-
5580MHz	Pass	PK	16.7442G	65.45	68.20	-2.75	3	Vertical	39	1.49	-
5580MHz	Pass	AV	4.18502G	37.78	54.00	-16.22	3	Horizontal	103	1.78	-



**RSE TX above 1GHz_Non-Beamforming_
Sample 2_Radio 1_Panel 1_1T1S**

Appendix D.7

Mode	Result	Type	Freq (Hz)	Level (dBuV/m)	Limit (dBuV/m)	Margin (dB)	Dist (m)	Condition	Azimuth (°)	Height (m)	Comments
5580MHz	Pass	AV	11.15964G	43.22	54.00	-10.78	3	Horizontal	350	1.58	-
5580MHz	Pass	PK	4.18498G	44.96	74.00	-29.04	3	Horizontal	103	1.78	-
5580MHz	Pass	PK	11.16828G	56.09	74.00	-17.91	3	Horizontal	350	1.58	-
5580MHz	Pass	PK	16.7391G	65.55	68.20	-2.65	3	Horizontal	179	1.37	-
5700MHz	Pass	AV	5.7018G	89.64	Inf	-Inf	3	Vertical	24	1.00	-
5700MHz	Pass	PK	5.7018G	99.55	Inf	-Inf	3	Vertical	24	1.00	-
5700MHz	Pass	PK	5.8446G	58.38	68.20	-9.82	3	Vertical	24	1.00	-
5700MHz	Pass	AV	5.7018G	104.35	Inf	-Inf	3	Horizontal	357	1.15	-
5700MHz	Pass	PK	5.7024G	114.72	Inf	-Inf	3	Horizontal	357	1.15	-
5700MHz	Pass	PK	5.7252G	67.57	68.20	-0.63	3	Horizontal	357	1.15	-
5700MHz	Pass	AV	3.8G	42.19	54.00	-11.81	3	Vertical	16	1.71	-
5700MHz	Pass	AV	11.40756G	42.51	54.00	-11.49	3	Vertical	11	1.49	-
5700MHz	Pass	PK	3.80013G	47.25	74.00	-26.75	3	Vertical	16	1.71	-
5700MHz	Pass	PK	11.40066G	55.90	74.00	-18.10	3	Vertical	11	1.49	-
5700MHz	Pass	PK	17.10822G	64.72	68.20	-3.48	3	Vertical	208	1.50	-
5700MHz	Pass	AV	3.80001G	44.62	54.00	-9.38	3	Horizontal	249	2.85	-
5700MHz	Pass	AV	11.38626G	42.39	54.00	-11.61	3	Horizontal	233	2.21	-
5700MHz	Pass	PK	3.8G	48.32	74.00	-25.68	3	Horizontal	249	2.85	-
5700MHz	Pass	PK	11.39466G	55.50	74.00	-18.50	3	Horizontal	233	2.21	-
5700MHz	Pass	PK	17.08764G	65.19	68.20	-3.01	3	Horizontal	213	1.48	-
5720MHz Straddle 5.47-5.725GHz	Pass	AV	5.4356G	44.11	54.00	-9.89	3	Vertical	24	1.00	-
5720MHz Straddle 5.47-5.725GHz	Pass	AV	5.7224G	94.43	Inf	-Inf	3	Vertical	24	1.00	-
5720MHz Straddle 5.47-5.725GHz	Pass	PK	5.4632G	55.92	68.20	-12.28	3	Vertical	24	1.00	-
5720MHz Straddle 5.47-5.725GHz	Pass	PK	5.7224G	104.20	Inf	-Inf	3	Vertical	24	1.00	-
5720MHz Straddle 5.47-5.725GHz	Pass	PK	5.9696G	58.46	68.20	-9.74	3	Vertical	24	1.00	-
5720MHz Straddle 5.47-5.725GHz	Pass	AV	5.426G	46.03	54.00	-7.97	3	Horizontal	360	1.48	-
5720MHz Straddle 5.47-5.725GHz	Pass	AV	5.7176G	109.29	Inf	-Inf	3	Horizontal	360	1.48	-
5720MHz Straddle 5.47-5.725GHz	Pass	PK	5.4608G	57.30	68.20	-10.90	3	Horizontal	360	1.48	-
5720MHz Straddle 5.47-5.725GHz	Pass	PK	5.7248G	119.16	Inf	-Inf	3	Horizontal	360	1.48	-
5720MHz Straddle 5.47-5.725GHz	Pass	PK	5.9264G	61.16	68.20	-7.04	3	Horizontal	360	1.48	-
5720MHz Straddle 5.47-5.725GHz	Pass	AV	3.81334G	41.11	54.00	-12.89	3	Vertical	6	1.80	-
5720MHz Straddle 5.47-5.725GHz	Pass	AV	11.4517G	42.63	54.00	-11.37	3	Vertical	218	2.54	-
5720MHz Straddle 5.47-5.725GHz	Pass	PK	3.8133G	46.00	74.00	-28.00	3	Vertical	6	1.80	-
5720MHz Straddle 5.47-5.725GHz	Pass	PK	11.45176G	55.95	74.00	-18.05	3	Vertical	218	2.54	-
5720MHz Straddle 5.47-5.725GHz	Pass	PK	17.15982G	67.07	68.20	-1.13	3	Vertical	22	1.60	-
5720MHz Straddle 5.47-5.725GHz	Pass	AV	3.81334G	42.95	54.00	-11.05	3	Horizontal	250	2.86	-
5720MHz Straddle 5.47-5.725GHz	Pass	AV	11.44594G	43.05	54.00	-10.95	3	Horizontal	11	1.65	-
5720MHz Straddle 5.47-5.725GHz	Pass	PK	3.81339G	46.99	74.00	-27.01	3	Horizontal	250	2.86	-
5720MHz Straddle 5.47-5.725GHz	Pass	PK	11.44042G	56.29	74.00	-17.71	3	Horizontal	11	1.65	-
5720MHz Straddle 5.47-5.725GHz	Pass	PK	17.16414G	65.72	68.20	-2.48	3	Horizontal	308	1.47	-
802.11ax HEW20_Nss1,(MCS0)_1TX	-	-	-	-	-	-	-	-	-	-	-
5260MHz	Pass	AV	5.15G	44.76	54.00	-9.24	3	Vertical	52	1.00	-
5260MHz	Pass	AV	5.263G	95.81	Inf	-Inf	3	Vertical	52	1.00	-
5260MHz	Pass	AV	5.353G	44.87	54.00	-9.13	3	Vertical	52	1.00	-
5260MHz	Pass	PK	5.1412G	56.83	74.00	-17.17	3	Vertical	52	1.00	-
5260MHz	Pass	PK	5.257G	108.68	Inf	-Inf	3	Vertical	52	1.00	-
5260MHz	Pass	PK	5.3572G	56.67	74.00	-17.33	3	Vertical	52	1.00	-
5260MHz	Pass	AV	5.15G	50.21	54.00	-3.79	3	Horizontal	360	1.48	-
5260MHz	Pass	AV	5.2612G	109.97	Inf	-Inf	3	Horizontal	360	1.48	-



**RSE TX above 1GHz_Non-Beamforming_
Sample 2_Radio 1_Panel 1_1T1S**

Appendix D.7

Mode	Result	Type	Freq (Hz)	Level (dBuV/m)	Limit (dBuV/m)	Margin (dB)	Dist (m)	Condition	Azimuth (°)	Height (m)	Comments
5260MHz	Pass	AV	5.3524G	53.22	54.00	-0.78	3	Horizontal	360	1.48	-
5260MHz	Pass	PK	5.146G	62.15	74.00	-11.85	3	Horizontal	360	1.48	-
5260MHz	Pass	PK	5.257G	122.70	Inf	-Inf	3	Horizontal	360	1.48	-
5260MHz	Pass	PK	5.356G	70.14	74.00	-3.86	3	Horizontal	360	1.48	-
5260MHz	Pass	AV	3.50668G	41.12	54.00	-12.88	3	Vertical	55	1.49	-
5260MHz	Pass	AV	15.7722G	46.37	54.00	-7.63	3	Vertical	66	1.43	-
5260MHz	Pass	PK	3.50664G	45.86	74.00	-28.14	3	Vertical	55	1.49	-
5260MHz	Pass	PK	10.5167G	57.89	68.20	-10.31	3	Vertical	354	1.40	-
5260MHz	Pass	PK	15.77424G	59.22	74.00	-14.78	3	Vertical	66	1.43	-
5260MHz	Pass	AV	3.50664G	42.66	54.00	-11.34	3	Horizontal	122	1.04	-
5260MHz	Pass	AV	15.77652G	46.85	54.00	-7.15	3	Horizontal	332	1.50	-
5260MHz	Pass	PK	3.50663G	46.87	74.00	-27.13	3	Horizontal	122	1.04	-
5260MHz	Pass	PK	10.5212G	58.08	68.20	-10.12	3	Horizontal	340	1.48	-
5260MHz	Pass	PK	15.77466G	60.57	74.00	-13.43	3	Horizontal	332	1.50	-
5300MHz	Pass	AV	5.303G	93.61	Inf	-Inf	3	Vertical	36	2.88	-
5300MHz	Pass	AV	5.35G	44.86	54.00	-9.14	3	Vertical	36	2.88	-
5300MHz	Pass	PK	5.3012G	105.60	Inf	-Inf	3	Vertical	36	2.88	-
5300MHz	Pass	PK	5.3504G	59.47	74.00	-14.53	3	Vertical	36	2.88	-
5300MHz	Pass	AV	5.303G	107.81	Inf	-Inf	3	Horizontal	357	1.50	-
5300MHz	Pass	AV	5.35G	53.03	54.00	-0.97	3	Horizontal	357	1.50	-
5300MHz	Pass	PK	5.297G	120.88	Inf	-Inf	3	Horizontal	357	1.50	-
5300MHz	Pass	PK	5.3504G	72.87	74.00	-1.13	3	Horizontal	357	1.50	-
5300MHz	Pass	AV	3.53337G	41.19	54.00	-12.81	3	Vertical	58	1.58	-
5300MHz	Pass	AV	10.60006G	45.09	54.00	-8.91	3	Vertical	204	2.15	-
5300MHz	Pass	AV	15.89094G	46.83	54.00	-7.17	3	Vertical	250	2.07	-
5300MHz	Pass	PK	3.53319G	46.35	74.00	-27.65	3	Vertical	58	1.58	-
5300MHz	Pass	PK	10.60318G	58.00	74.00	-16.00	3	Vertical	204	2.15	-
5300MHz	Pass	PK	15.9084G	59.52	74.00	-14.48	3	Vertical	250	2.07	-
5300MHz	Pass	AV	3.53332G	44.11	54.00	-9.89	3	Horizontal	119	1.57	-
5300MHz	Pass	AV	10.60636G	41.78	54.00	-12.22	3	Horizontal	47	2.26	-
5300MHz	Pass	AV	15.89766G	46.74	54.00	-7.26	3	Horizontal	279	1.35	-
5300MHz	Pass	PK	3.53332G	47.72	74.00	-26.28	3	Horizontal	119	1.57	-
5300MHz	Pass	PK	10.59022G	55.54	68.20	-12.66	3	Horizontal	47	2.26	-
5300MHz	Pass	PK	15.9042G	59.45	74.00	-14.55	3	Horizontal	279	1.35	-
5320MHz	Pass	AV	5.3188G	90.37	Inf	-Inf	3	Vertical	27	2.87	-
5320MHz	Pass	AV	5.35G	45.02	54.00	-8.98	3	Vertical	27	2.87	-
5320MHz	Pass	PK	5.317G	103.58	Inf	-Inf	3	Vertical	27	2.87	-
5320MHz	Pass	PK	5.3548G	60.91	74.00	-13.09	3	Vertical	27	2.87	-
5320MHz	Pass	AV	5.3182G	103.88	Inf	-Inf	3	Horizontal	356	1.50	-
5320MHz	Pass	AV	5.3506G	52.19	54.00	-1.81	3	Horizontal	356	1.50	-
5320MHz	Pass	PK	5.317G	116.99	Inf	-Inf	3	Horizontal	356	1.50	-
5320MHz	Pass	PK	5.3542G	73.59	74.00	-0.41	3	Horizontal	356	1.50	-
5320MHz	Pass	AV	3.54666G	40.83	54.00	-13.17	3	Vertical	22	1.48	-
5320MHz	Pass	AV	10.63442G	41.95	54.00	-12.05	3	Vertical	32	1.18	-
5320MHz	Pass	AV	15.96072G	46.99	54.00	-7.01	3	Vertical	234	1.73	-
5320MHz	Pass	PK	3.54671G	45.82	74.00	-28.18	3	Vertical	22	1.48	-
5320MHz	Pass	PK	10.6478G	54.97	74.00	-19.03	3	Vertical	32	1.18	-
5320MHz	Pass	PK	15.9714G	59.99	74.00	-14.01	3	Vertical	234	1.73	-
5320MHz	Pass	AV	3.54667G	44.16	54.00	-9.84	3	Horizontal	122	1.47	-



**RSE TX above 1GHz_Non-Beamforming_
Sample 2_Radio 1_Panel 1_1T1S**

Appendix D.7

Mode	Result	Type	Freq (Hz)	Level (dBuV/m)	Limit (dBuV/m)	Margin (dB)	Dist (m)	Condition	Azimuth (°)	Height (m)	Comments
5320MHz	Pass	AV	10.65338G	41.82	54.00	-12.18	3	Horizontal	116	1.51	-
5320MHz	Pass	AV	15.97362G	46.96	54.00	-7.04	3	Horizontal	21	2.17	-
5320MHz	Pass	PK	3.54662G	47.48	74.00	-26.52	3	Horizontal	122	1.47	-
5320MHz	Pass	PK	10.6493G	54.97	74.00	-19.03	3	Horizontal	116	1.51	-
5320MHz	Pass	PK	15.9465G	60.26	74.00	-13.74	3	Horizontal	21	2.17	-
5500MHz	Pass	AV	5.3956G	44.32	54.00	-9.68	3	Vertical	31	2.94	-
5500MHz	Pass	AV	5.5048G	89.48	Inf	-Inf	3	Vertical	31	2.94	-
5500MHz	Pass	PK	5.4604G	55.73	68.20	-12.47	3	Vertical	31	2.94	-
5500MHz	Pass	PK	5.497G	101.86	Inf	-Inf	3	Vertical	31	2.94	-
5500MHz	Pass	AV	5.4598G	47.99	54.00	-6.01	3	Horizontal	0	1.43	-
5500MHz	Pass	AV	5.4982G	103.17	Inf	-Inf	3	Horizontal	0	1.43	-
5500MHz	Pass	PK	5.4652G	68.02	68.20	-0.18	3	Horizontal	0	1.43	-
5500MHz	Pass	PK	5.497G	116.04	Inf	-Inf	3	Horizontal	0	1.43	-
5500MHz	Pass	AV	3.66669G	42.22	54.00	-11.78	3	Vertical	19	1.48	-
5500MHz	Pass	AV	11.005G	41.26	54.00	-12.74	3	Vertical	84	2.08	-
5500MHz	Pass	PK	3.66668G	46.30	74.00	-27.70	3	Vertical	19	1.48	-
5500MHz	Pass	PK	11.00196G	54.75	74.00	-19.25	3	Vertical	84	2.08	-
5500MHz	Pass	PK	16.4953G	61.63	68.20	-6.57	3	Vertical	359	2.50	-
5500MHz	Pass	AV	3.6667G	45.34	54.00	-8.66	3	Horizontal	128	1.00	-
5500MHz	Pass	AV	11.00036G	41.24	54.00	-12.76	3	Horizontal	143	1.89	-
5500MHz	Pass	PK	3.66669G	48.51	74.00	-25.49	3	Horizontal	128	1.00	-
5500MHz	Pass	PK	11.00482G	54.41	74.00	-19.59	3	Horizontal	143	1.89	-
5500MHz	Pass	PK	16.50292G	61.66	68.20	-6.54	3	Horizontal	287	1.18	-
5580MHz	Pass	AV	5.454G	44.25	54.00	-9.75	3	Vertical	24	2.87	-
5580MHz	Pass	AV	5.5854G	94.33	Inf	-Inf	3	Vertical	24	2.87	-
5580MHz	Pass	PK	5.4636G	56.56	68.20	-11.64	3	Vertical	24	2.87	-
5580MHz	Pass	PK	5.577G	106.81	Inf	-Inf	3	Vertical	24	2.87	-
5580MHz	Pass	PK	5.7252G	55.99	68.20	-12.21	3	Vertical	24	2.87	-
5580MHz	Pass	AV	5.4576G	49.08	54.00	-4.92	3	Horizontal	0	1.49	-
5580MHz	Pass	AV	5.583G	110.06	Inf	-Inf	3	Horizontal	0	1.49	-
5580MHz	Pass	PK	5.4696G	66.55	68.20	-1.65	3	Horizontal	0	1.49	-
5580MHz	Pass	PK	5.577G	122.43	Inf	-Inf	3	Horizontal	0	1.49	-
5580MHz	Pass	PK	5.7258G	58.84	68.20	-9.36	3	Horizontal	0	1.49	-
5580MHz	Pass	AV	4.18499G	37.27	54.00	-16.73	3	Vertical	20	1.55	-
5580MHz	Pass	AV	11.15956G	41.17	54.00	-12.83	3	Vertical	219	1.66	-
5580MHz	Pass	PK	4.1851G	43.85	74.00	-30.15	3	Vertical	20	1.55	-
5580MHz	Pass	PK	11.1646G	55.08	74.00	-18.92	3	Vertical	219	1.66	-
5580MHz	Pass	PK	16.74408G	66.15	68.20	-2.05	3	Vertical	97	1.36	-
5580MHz	Pass	AV	4.18503G	36.40	54.00	-17.60	3	Horizontal	102	1.66	-
5580MHz	Pass	AV	11.16464G	41.18	54.00	-12.82	3	Horizontal	141	1.21	-
5580MHz	Pass	PK	4.18497G	44.14	74.00	-29.86	3	Horizontal	102	1.66	-
5580MHz	Pass	PK	11.16492G	54.07	74.00	-19.93	3	Horizontal	141	1.21	-
5580MHz	Pass	PK	16.74382G	65.48	68.20	-2.72	3	Horizontal	218	2.39	-
5700MHz	Pass	AV	5.6928G	85.30	Inf	-Inf	3	Vertical	23	1.02	-
5700MHz	Pass	PK	5.697G	98.26	Inf	-Inf	3	Vertical	23	1.02	-
5700MHz	Pass	PK	5.7324G	56.93	68.20	-11.27	3	Vertical	23	1.02	-
5700MHz	Pass	AV	5.6928G	100.56	Inf	-Inf	3	Horizontal	358	1.50	-
5700MHz	Pass	PK	5.697G	113.49	Inf	-Inf	3	Horizontal	358	1.50	-
5700MHz	Pass	PK	5.7252G	67.33	68.20	-0.87	3	Horizontal	358	1.50	-



**RSE TX above 1GHz_Non-Beamforming_
Sample 2_Radio 1_Panel 1_1T1S**

Appendix D.7

Mode	Result	Type	Freq (Hz)	Level (dBuV/m)	Limit (dBuV/m)	Margin (dB)	Dist (m)	Condition	Azimuth (°)	Height (m)	Comments
5700MHz	Pass	AV	3.79998G	42.05	54.00	-11.95	3	Vertical	18	1.74	-
5700MHz	Pass	AV	11.40066G	41.24	54.00	-12.76	3	Vertical	296	2.32	-
5700MHz	Pass	PK	3.79998G	47.16	74.00	-26.84	3	Vertical	18	1.74	-
5700MHz	Pass	PK	11.39784G	54.78	74.00	-19.22	3	Vertical	296	2.32	-
5700MHz	Pass	PK	17.10284G	64.15	68.20	-4.05	3	Vertical	320	1.62	-
5700MHz	Pass	AV	3.80001G	44.55	54.00	-9.45	3	Horizontal	247	2.68	-
5700MHz	Pass	AV	11.39744G	41.20	54.00	-12.80	3	Horizontal	183	1.91	-
5700MHz	Pass	PK	3.80011G	48.09	74.00	-25.91	3	Horizontal	247	2.68	-
5700MHz	Pass	PK	11.39726G	54.51	74.00	-19.49	3	Horizontal	183	1.91	-
5700MHz	Pass	PK	17.10398G	63.56	68.20	-4.64	3	Horizontal	49	1.52	-
5720MHz Straddle 5.47-5.725GHz	Pass	AV	5.4212G	43.49	54.00	-10.51	3	Vertical	23	1.00	-
5720MHz Straddle 5.47-5.725GHz	Pass	AV	5.7212G	94.96	Inf	-Inf	3	Vertical	23	1.00	-
5720MHz Straddle 5.47-5.725GHz	Pass	PK	5.46G	55.08	74.00	-18.92	3	Vertical	23	1.00	-
5720MHz Straddle 5.47-5.725GHz	Pass	PK	5.7176G	107.71	Inf	-Inf	3	Vertical	23	1.00	-
5720MHz Straddle 5.47-5.725GHz	Pass	PK	5.9228G	57.61	68.20	-10.59	3	Vertical	23	1.00	-
5720MHz Straddle 5.47-5.725GHz	Pass	AV	5.4392G	45.13	54.00	-8.87	3	Horizontal	357	1.49	-
5720MHz Straddle 5.47-5.725GHz	Pass	AV	5.7212G	110.23	Inf	-Inf	3	Horizontal	357	1.49	-
5720MHz Straddle 5.47-5.725GHz	Pass	PK	5.468G	57.11	68.20	-11.09	3	Horizontal	357	1.49	-
5720MHz Straddle 5.47-5.725GHz	Pass	PK	5.7176G	123.20	Inf	-Inf	3	Horizontal	357	1.49	-
5720MHz Straddle 5.47-5.725GHz	Pass	PK	5.852G	63.14	68.20	-5.06	3	Horizontal	357	1.49	-
5720MHz Straddle 5.47-5.725GHz	Pass	AV	3.81334G	41.74	54.00	-12.26	3	Vertical	17	1.69	-
5720MHz Straddle 5.47-5.725GHz	Pass	AV	11.44498G	41.46	54.00	-12.54	3	Vertical	140	1.05	-
5720MHz Straddle 5.47-5.725GHz	Pass	PK	3.81325G	46.16	74.00	-27.84	3	Vertical	17	1.69	-
5720MHz Straddle 5.47-5.725GHz	Pass	PK	11.4411G	54.81	74.00	-19.19	3	Vertical	140	1.05	-
5720MHz Straddle 5.47-5.725GHz	Pass	PK	17.14926G	65.79	68.20	-2.41	3	Vertical	20	1.71	-
5720MHz Straddle 5.47-5.725GHz	Pass	AV	3.81335G	43.85	54.00	-10.15	3	Horizontal	248	2.64	-
5720MHz Straddle 5.47-5.725GHz	Pass	AV	11.43968G	41.33	54.00	-12.67	3	Horizontal	10	1.68	-
5720MHz Straddle 5.47-5.725GHz	Pass	PK	3.81331G	47.46	74.00	-26.54	3	Horizontal	248	2.64	-
5720MHz Straddle 5.47-5.725GHz	Pass	PK	11.4408G	54.94	74.00	-19.06	3	Horizontal	10	1.68	-
5720MHz Straddle 5.47-5.725GHz	Pass	PK	17.16114G	63.64	68.20	-4.56	3	Horizontal	305	1.49	-
802.11ax HEW40_Nss1,(MCS0)_1TX	-	-	-	-	-	-	-	-	-	-	-
5270MHz	Pass	AV	5.1458G	44.95	54.00	-9.05	3	Vertical	36	2.91	-
5270MHz	Pass	AV	5.2742G	90.46	Inf	-Inf	3	Vertical	36	2.91	-
5270MHz	Pass	AV	5.3612G	44.50	54.00	-9.50	3	Vertical	36	2.91	-
5270MHz	Pass	PK	5.1392G	56.25	74.00	-17.75	3	Vertical	36	2.91	-
5270MHz	Pass	PK	5.255G	102.20	Inf	-Inf	3	Vertical	36	2.91	-
5270MHz	Pass	PK	5.3528G	56.23	74.00	-17.77	3	Vertical	36	2.91	-
5270MHz	Pass	AV	5.141G	47.99	54.00	-6.01	3	Horizontal	357	1.50	-
5270MHz	Pass	AV	5.276G	104.08	Inf	-Inf	3	Horizontal	357	1.50	-
5270MHz	Pass	AV	5.3522G	53.17	54.00	-0.83	3	Horizontal	357	1.50	-
5270MHz	Pass	PK	5.1422G	59.84	74.00	-14.16	3	Horizontal	357	1.50	-
5270MHz	Pass	PK	5.2622G	116.60	Inf	-Inf	3	Horizontal	357	1.50	-
5270MHz	Pass	PK	5.3516G	68.12	74.00	-5.88	3	Horizontal	357	1.50	-
5270MHz	Pass	AV	3.5133G	40.44	54.00	-13.56	3	Vertical	54	1.77	-
5270MHz	Pass	AV	15.8148G	45.69	54.00	-8.31	3	Vertical	5	2.07	-
5270MHz	Pass	PK	3.51336G	44.81	74.00	-29.19	3	Vertical	54	1.77	-
5270MHz	Pass	PK	10.54302G	53.56	68.20	-14.64	3	Vertical	306	1.91	-
5270MHz	Pass	PK	15.80568G	58.18	74.00	-15.82	3	Vertical	5	2.07	-
5270MHz	Pass	AV	3.51333G	41.46	54.00	-12.54	3	Horizontal	121	1.22	-



**RSE TX above 1GHz_Non-Beamforming_
Sample 2_Radio 1_Panel 1_1T1S**

Appendix D.7

Mode	Result	Type	Freq (Hz)	Level (dBuV/m)	Limit (dBuV/m)	Margin (dB)	Dist (m)	Condition	Azimuth (°)	Height (m)	Comments
5270MHz	Pass	AV	15.81002G	46.04	54.00	-7.96	3	Horizontal	254	2.22	-
5270MHz	Pass	PK	3.51331G	45.53	74.00	-28.47	3	Horizontal	121	1.22	-
5270MHz	Pass	PK	10.5403G	53.45	68.20	-14.75	3	Horizontal	257	1.04	-
5270MHz	Pass	PK	15.80682G	58.51	74.00	-15.49	3	Horizontal	254	2.22	-
5310MHz	Pass	AV	5.3142G	85.33	Inf	-Inf	3	Vertical	28	2.89	-
5310MHz	Pass	AV	5.3526G	44.68	54.00	-9.32	3	Vertical	28	2.89	-
5310MHz	Pass	PK	5.3022G	97.58	Inf	-Inf	3	Vertical	28	2.89	-
5310MHz	Pass	PK	5.3514G	56.75	74.00	-17.25	3	Vertical	28	2.89	-
5310MHz	Pass	AV	5.3142G	99.11	Inf	-Inf	3	Horizontal	356	1.48	-
5310MHz	Pass	AV	5.35G	53.18	54.00	-0.82	3	Horizontal	356	1.48	-
5310MHz	Pass	PK	5.3022G	111.39	Inf	-Inf	3	Horizontal	356	1.48	-
5310MHz	Pass	PK	5.35G	67.83	74.00	-6.17	3	Horizontal	356	1.48	-
5310MHz	Pass	AV	3.53997G	40.80	54.00	-13.20	3	Vertical	57	1.49	-
5310MHz	Pass	AV	10.62416G	41.58	54.00	-12.42	3	Vertical	175	2.01	-
5310MHz	Pass	AV	15.93348G	46.31	54.00	-7.69	3	Vertical	82	2.35	-
5310MHz	Pass	PK	3.54006G	45.12	74.00	-28.88	3	Vertical	57	1.49	-
5310MHz	Pass	PK	10.62456G	54.06	74.00	-19.94	3	Vertical	175	2.01	-
5310MHz	Pass	PK	15.93472G	59.10	74.00	-14.90	3	Vertical	82	2.35	-
5310MHz	Pass	AV	3.53998G	43.51	54.00	-10.49	3	Horizontal	120	1.55	-
5310MHz	Pass	AV	10.62408G	41.65	54.00	-12.35	3	Horizontal	236	1.14	-
5310MHz	Pass	AV	15.93414G	46.07	54.00	-7.93	3	Horizontal	157	2.13	-
5310MHz	Pass	PK	3.54011G	46.87	74.00	-27.13	3	Horizontal	120	1.55	-
5310MHz	Pass	PK	10.61642G	54.19	74.00	-19.81	3	Horizontal	236	1.14	-
5310MHz	Pass	PK	15.93442G	59.30	74.00	-14.70	3	Horizontal	157	2.13	-
5510MHz	Pass	AV	5.3678G	44.23	54.00	-9.77	3	Vertical	24	2.95	-
5510MHz	Pass	AV	5.5058G	85.69	Inf	-Inf	3	Vertical	24	2.95	-
5510MHz	Pass	PK	5.4638G	56.08	68.20	-12.12	3	Vertical	24	2.95	-
5510MHz	Pass	PK	5.5022G	97.71	Inf	-Inf	3	Vertical	24	2.95	-
5510MHz	Pass	AV	5.459G	50.51	54.00	-3.49	3	Horizontal	351	1.67	-
5510MHz	Pass	AV	5.5166G	99.27	Inf	-Inf	3	Horizontal	351	1.67	-
5510MHz	Pass	PK	5.4698G	67.54	68.20	-0.66	3	Horizontal	351	1.67	-
5510MHz	Pass	PK	5.5022G	111.33	Inf	-Inf	3	Horizontal	351	1.67	-
5510MHz	Pass	AV	3.67334G	43.92	54.00	-10.08	3	Vertical	7	1.86	-
5510MHz	Pass	AV	11.02188G	41.99	54.00	-12.01	3	Vertical	106	1.25	-
5510MHz	Pass	PK	3.67326G	47.00	74.00	-27.00	3	Vertical	7	1.86	-
5510MHz	Pass	PK	11.0221G	54.02	74.00	-19.98	3	Vertical	106	1.25	-
5510MHz	Pass	PK	16.53118G	62.24	68.20	-5.96	3	Vertical	319	2.48	-
5510MHz	Pass	AV	3.67335G	46.01	54.00	-7.99	3	Horizontal	126	1.38	-
5510MHz	Pass	AV	11.02712G	41.62	54.00	-12.38	3	Horizontal	319	1.98	-
5510MHz	Pass	PK	3.67339G	48.96	74.00	-25.04	3	Horizontal	126	1.38	-
5510MHz	Pass	PK	11.02328G	54.16	74.00	-19.84	3	Horizontal	319	1.98	-
5510MHz	Pass	PK	16.53238G	61.94	68.20	-6.26	3	Horizontal	7	2.33	-
5550MHz	Pass	AV	5.454G	44.59	54.00	-9.41	3	Vertical	25	2.89	-
5550MHz	Pass	AV	5.5542G	89.23	Inf	-Inf	3	Vertical	25	2.89	-
5550MHz	Pass	PK	5.4666G	56.54	68.20	-11.66	3	Vertical	25	2.89	-
5550MHz	Pass	PK	5.5662G	101.44	Inf	-Inf	3	Vertical	25	2.89	-
5550MHz	Pass	AV	5.4588G	50.95	54.00	-3.05	3	Horizontal	0	1.49	-
5550MHz	Pass	AV	5.5542G	104.04	Inf	-Inf	3	Horizontal	0	1.49	-
5550MHz	Pass	PK	5.4696G	67.25	68.20	-0.95	3	Horizontal	0	1.49	-



**RSE TX above 1GHz_Non-Beamforming_
Sample 2_Radio 1_Panel 1_1T1S**

Appendix D.7

Mode	Result	Type	Freq (Hz)	Level (dBuV/m)	Limit (dBuV/m)	Margin (dB)	Dist (m)	Condition	Azimuth (°)	Height (m)	Comments
5550MHz	Pass	PK	5.535G	116.27	Inf	-Inf	3	Horizontal	0	1.49	-
5550MHz	Pass	AV	4.16252G	37.57	54.00	-16.43	3	Vertical	19	1.36	-
5550MHz	Pass	AV	11.10244G	41.68	54.00	-12.32	3	Vertical	227	1.76	-
5550MHz	Pass	PK	4.16243G	43.81	74.00	-30.19	3	Vertical	19	1.36	-
5550MHz	Pass	PK	11.09826G	54.49	74.00	-19.51	3	Vertical	227	1.76	-
5550MHz	Pass	PK	16.64662G	62.37	68.20	-5.83	3	Vertical	134	1.47	-
5550MHz	Pass	AV	4.16252G	36.02	54.00	-17.98	3	Horizontal	122	1.63	-
5550MHz	Pass	AV	11.099G	41.73	54.00	-12.27	3	Horizontal	286	1.76	-
5550MHz	Pass	PK	4.1625G	42.89	74.00	-31.11	3	Horizontal	122	1.63	-
5550MHz	Pass	PK	11.10156G	53.69	74.00	-20.31	3	Horizontal	286	1.76	-
5550MHz	Pass	PK	16.64886G	62.40	68.20	-5.80	3	Horizontal	191	1.93	-
5670MHz	Pass	AV	5.6748G	86.57	Inf	-Inf	3	Vertical	23	1.05	-
5670MHz	Pass	PK	5.6622G	98.55	Inf	-Inf	3	Vertical	23	1.05	-
5670MHz	Pass	PK	5.7354G	56.69	68.20	-11.51	3	Vertical	23	1.05	-
5670MHz	Pass	AV	5.6742G	101.65	Inf	-Inf	3	Horizontal	356	1.50	-
5670MHz	Pass	PK	5.6622G	113.81	Inf	-Inf	3	Horizontal	356	1.50	-
5670MHz	Pass	PK	5.7282G	67.22	68.20	-0.98	3	Horizontal	356	1.50	-
5670MHz	Pass	AV	3.77998G	42.23	54.00	-11.77	3	Vertical	182	1.47	-
5670MHz	Pass	AV	11.3476G	42.14	54.00	-11.86	3	Vertical	197	2.25	-
5670MHz	Pass	PK	3.77997G	46.05	74.00	-27.95	3	Vertical	182	1.47	-
5670MHz	Pass	PK	11.34212G	54.91	74.00	-19.09	3	Vertical	197	2.25	-
5670MHz	Pass	PK	17.00526G	64.18	68.20	-4.02	3	Vertical	357	1.26	-
5670MHz	Pass	AV	3.77997G	45.17	54.00	-8.83	3	Horizontal	247	2.69	-
5670MHz	Pass	AV	11.34282G	42.00	54.00	-12.00	3	Horizontal	198	2.26	-
5670MHz	Pass	PK	3.77997G	48.18	74.00	-25.82	3	Horizontal	247	2.69	-
5670MHz	Pass	PK	11.3445G	54.51	74.00	-19.49	3	Horizontal	198	2.26	-
5670MHz	Pass	PK	17.00986G	64.55	68.20	-3.65	3	Horizontal	231	1.76	-
5710MHz Straddle 5.47-5.725GHz	Pass	AV	5.4532G	44.11	54.00	-9.89	3	Vertical	23	1.04	-
5710MHz Straddle 5.47-5.725GHz	Pass	AV	5.6944G	91.67	Inf	-Inf	3	Vertical	23	1.04	-
5710MHz Straddle 5.47-5.725GHz	Pass	PK	5.464G	54.58	68.20	-13.62	3	Vertical	23	1.04	-
5710MHz Straddle 5.47-5.725GHz	Pass	PK	5.6944G	104.20	Inf	-Inf	3	Vertical	23	1.04	-
5710MHz Straddle 5.47-5.725GHz	Pass	PK	5.9884G	57.56	68.20	-10.64	3	Vertical	23	1.04	-
5710MHz Straddle 5.47-5.725GHz	Pass	AV	5.4424G	46.39	54.00	-7.61	3	Horizontal	357	1.48	-
5710MHz Straddle 5.47-5.725GHz	Pass	AV	5.7064G	106.94	Inf	-Inf	3	Horizontal	357	1.48	-
5710MHz Straddle 5.47-5.725GHz	Pass	PK	5.4676G	57.56	68.20	-10.64	3	Horizontal	357	1.48	-
5710MHz Straddle 5.47-5.725GHz	Pass	PK	5.7256G	119.64	Inf	-Inf	3	Horizontal	357	1.48	-
5710MHz Straddle 5.47-5.725GHz	Pass	PK	5.8504G	68.04	68.20	-0.16	3	Horizontal	357	1.48	-
5710MHz Straddle 5.47-5.725GHz	Pass	AV	3.80664G	41.81	54.00	-12.19	3	Vertical	245	1.36	-
5710MHz Straddle 5.47-5.725GHz	Pass	AV	11.42496G	42.38	54.00	-11.62	3	Vertical	280	2.31	-
5710MHz Straddle 5.47-5.725GHz	Pass	PK	3.80661G	46.19	74.00	-27.81	3	Vertical	245	1.36	-
5710MHz Straddle 5.47-5.725GHz	Pass	PK	11.41774G	54.36	74.00	-19.64	3	Vertical	280	2.31	-
5710MHz Straddle 5.47-5.725GHz	Pass	PK	17.12704G	63.57	68.20	-4.63	3	Vertical	25	1.44	-
5710MHz Straddle 5.47-5.725GHz	Pass	AV	3.80668G	44.85	54.00	-9.15	3	Horizontal	249	2.83	-
5710MHz Straddle 5.47-5.725GHz	Pass	AV	11.4189G	42.21	54.00	-11.79	3	Horizontal	8	1.05	-
5710MHz Straddle 5.47-5.725GHz	Pass	PK	3.80667G	48.18	74.00	-25.82	3	Horizontal	249	2.83	-
5710MHz Straddle 5.47-5.725GHz	Pass	PK	11.4197G	54.25	74.00	-19.75	3	Horizontal	8	1.05	-
5710MHz Straddle 5.47-5.725GHz	Pass	PK	17.13438G	63.87	68.20	-4.33	3	Horizontal	302	1.96	-
802.11ax HEW80_Nss1_(MCS0)_1TX	-	-	-	-	-	-	-	-	-	-	-
5290MHz	Pass	AV	5.103G	44.50	54.00	-9.50	3	Vertical	29	2.91	-



**RSE TX above 1GHz_Non-Beamforming_
Sample 2_Radio 1_Panel 1_1T1S**

Appendix D.7

Mode	Result	Type	Freq (Hz)	Level (dBuV/m)	Limit (dBuV/m)	Margin (dB)	Dist (m)	Condition	Azimuth (°)	Height (m)	Comments
5290MHz	Pass	AV	5.287G	82.25	Inf	-Inf	3	Vertical	29	2.91	-
5290MHz	Pass	AV	5.363G	44.53	54.00	-9.47	3	Vertical	29	2.91	-
5290MHz	Pass	PK	5.077G	55.75	74.00	-18.25	3	Vertical	29	2.91	-
5290MHz	Pass	PK	5.303G	93.87	Inf	-Inf	3	Vertical	29	2.91	-
5290MHz	Pass	PK	5.524G	55.87	68.20	-12.33	3	Vertical	29	2.91	-
5290MHz	Pass	AV	5.143G	46.95	54.00	-7.05	3	Horizontal	357	1.50	-
5290MHz	Pass	AV	5.28G	96.50	Inf	-Inf	3	Horizontal	357	1.50	-
5290MHz	Pass	AV	5.353G	53.32	54.00	-0.68	3	Horizontal	357	1.50	-
5290MHz	Pass	PK	5.144G	58.26	74.00	-15.74	3	Horizontal	357	1.50	-
5290MHz	Pass	PK	5.304G	108.15	Inf	-Inf	3	Horizontal	357	1.50	-
5290MHz	Pass	PK	5.353G	66.29	74.00	-7.71	3	Horizontal	357	1.50	-
5290MHz	Pass	AV	3.52622G	41.11	54.00	-12.89	3	Vertical	203	1.83	-
5290MHz	Pass	AV	15.8736G	46.27	54.00	-7.73	3	Vertical	15	2.39	-
5290MHz	Pass	PK	3.5262G	46.89	74.00	-27.11	3	Vertical	203	1.83	-
5290MHz	Pass	PK	10.57858G	53.93	68.20	-14.27	3	Vertical	24	1.66	-
5290MHz	Pass	PK	15.8721G	58.54	74.00	-15.46	3	Vertical	15	2.39	-
5290MHz	Pass	AV	3.52632G	44.06	54.00	-9.94	3	Horizontal	249	2.83	-
5290MHz	Pass	AV	15.86992G	46.21	54.00	-7.79	3	Horizontal	131	2.10	-
5290MHz	Pass	PK	3.5262G	48.86	74.00	-25.14	3	Horizontal	249	2.83	-
5290MHz	Pass	PK	10.57508G	53.78	68.20	-14.42	3	Horizontal	3	2.38	-
5290MHz	Pass	PK	15.87334G	58.47	74.00	-15.53	3	Horizontal	131	2.10	-
5530MHz	Pass	AV	5.397G	44.38	54.00	-9.62	3	Vertical	17	1.00	-
5530MHz	Pass	AV	5.545G	81.87	Inf	-Inf	3	Vertical	17	1.00	-
5530MHz	Pass	PK	5.299G	55.65	68.20	-12.55	3	Vertical	17	1.00	-
5530MHz	Pass	PK	5.544G	93.79	Inf	-Inf	3	Vertical	17	1.00	-
5530MHz	Pass	PK	5.734G	55.97	68.20	-12.23	3	Vertical	17	1.00	-
5530MHz	Pass	AV	5.459G	53.78	54.00	-0.22	3	Horizontal	351	1.49	-
5530MHz	Pass	AV	5.536G	96.67	Inf	-Inf	3	Horizontal	351	1.49	-
5530MHz	Pass	PK	5.467G	67.12	68.20	-1.08	3	Horizontal	351	1.49	-
5530MHz	Pass	PK	5.529G	108.45	Inf	-Inf	3	Horizontal	351	1.49	-
5530MHz	Pass	PK	5.726G	57.51	68.20	-10.69	3	Horizontal	351	1.49	-
5530MHz	Pass	AV	3.68667G	42.60	54.00	-11.40	3	Vertical	320	2.34	-
5530MHz	Pass	AV	11.05636G	41.63	54.00	-12.37	3	Vertical	310	1.23	-
5530MHz	Pass	PK	3.68661G	46.58	74.00	-27.42	3	Vertical	320	2.34	-
5530MHz	Pass	PK	11.06024G	54.48	74.00	-19.52	3	Vertical	310	1.23	-
5530MHz	Pass	PK	16.58806G	61.95	68.20	-6.25	3	Vertical	255	1.57	-
5530MHz	Pass	AV	3.68669G	45.63	54.00	-8.37	3	Horizontal	247	2.81	-
5530MHz	Pass	AV	11.05644G	41.64	54.00	-12.36	3	Horizontal	249	2.36	-
5530MHz	Pass	PK	3.68672G	48.30	74.00	-25.70	3	Horizontal	247	2.81	-
5530MHz	Pass	PK	11.06298G	53.73	74.00	-20.27	3	Horizontal	249	2.36	-
5530MHz	Pass	PK	16.59324G	62.36	68.20	-5.84	3	Horizontal	98	2.06	-
5610MHz	Pass	AV	5.37G	44.01	54.00	-9.99	3	Vertical	16	1.03	-
5610MHz	Pass	AV	5.623G	83.16	Inf	-Inf	3	Vertical	16	1.03	-
5610MHz	Pass	PK	5.469G	55.35	68.20	-12.85	3	Vertical	16	1.03	-
5610MHz	Pass	PK	5.609G	95.07	Inf	-Inf	3	Vertical	16	1.03	-
5610MHz	Pass	PK	5.827G	56.46	68.20	-11.74	3	Vertical	16	1.03	-
5610MHz	Pass	AV	5.457G	49.17	54.00	-4.83	3	Horizontal	349	1.57	-
5610MHz	Pass	AV	5.6G	98.20	Inf	-Inf	3	Horizontal	349	1.57	-
5610MHz	Pass	PK	5.464G	62.37	68.20	-5.83	3	Horizontal	349	1.57	-



**RSE TX above 1GHz_Non-Beamforming_
Sample 2_Radio 1_Panel 1_1T1S**

Appendix D.7

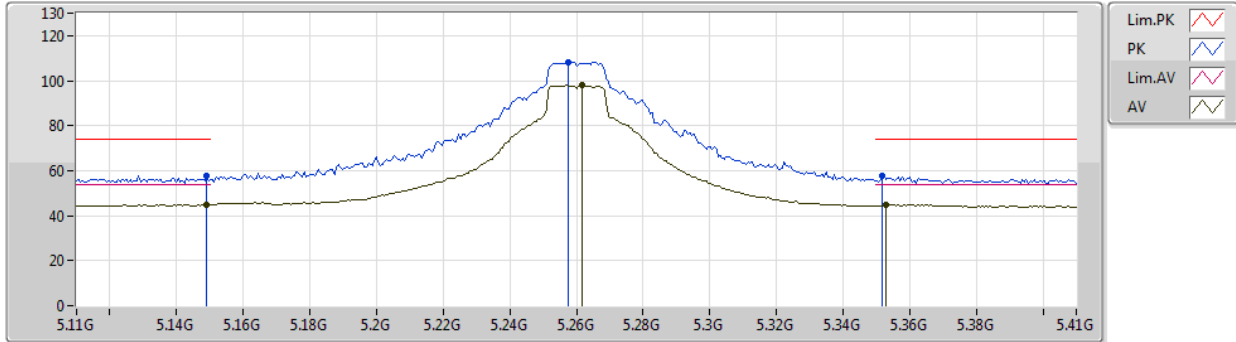
Mode	Result	Type	Freq (Hz)	Level (dBuV/m)	Limit (dBuV/m)	Margin (dB)	Dist (m)	Condition	Azimuth (°)	Height (m)	Comments
5610MHz	Pass	PK	5.609G	110.20	Inf	-Inf	3	Horizontal	349	1.57	-
5610MHz	Pass	PK	5.726G	67.63	68.20	-0.57	3	Horizontal	349	1.57	-
5610MHz	Pass	AV	3.74G	41.49	54.00	-12.51	3	Vertical	95	1.65	-
5610MHz	Pass	AV	11.2203G	42.07	54.00	-11.93	3	Vertical	294	1.29	-
5610MHz	Pass	PK	3.74003G	45.99	74.00	-28.01	3	Vertical	95	1.65	-
5610MHz	Pass	PK	11.22038G	54.16	74.00	-19.84	3	Vertical	294	1.29	-
5610MHz	Pass	PK	16.83358G	61.76	68.20	-6.44	3	Vertical	113	1.27	-
5610MHz	Pass	AV	3.74G	44.53	54.00	-9.47	3	Horizontal	251	2.86	-
5610MHz	Pass	AV	11.22284G	42.10	54.00	-11.90	3	Horizontal	344	2.20	-
5610MHz	Pass	PK	3.73992G	47.95	74.00	-26.05	3	Horizontal	251	2.86	-
5610MHz	Pass	PK	11.2236G	55.03	74.00	-18.97	3	Horizontal	344	2.20	-
5610MHz	Pass	PK	16.83452G	62.53	68.20	-5.67	3	Horizontal	259	2.00	-
5690MHz Straddle 5.47-5.725GHz	Pass	AV	5.4536G	44.04	54.00	-9.96	3	Vertical	23	1.03	-
5690MHz Straddle 5.47-5.725GHz	Pass	AV	5.7032G	86.46	Inf	-Inf	3	Vertical	23	1.03	-
5690MHz Straddle 5.47-5.725GHz	Pass	PK	5.4692G	54.70	68.20	-13.50	3	Vertical	23	1.03	-
5690MHz Straddle 5.47-5.725GHz	Pass	PK	5.6888G	98.18	Inf	-Inf	3	Vertical	23	1.03	-
5690MHz Straddle 5.47-5.725GHz	Pass	PK	5.918G	57.80	68.20	-10.40	3	Vertical	23	1.03	-
5690MHz Straddle 5.47-5.725GHz	Pass	AV	5.4596G	47.13	54.00	-6.87	3	Horizontal	358	1.59	-
5690MHz Straddle 5.47-5.725GHz	Pass	AV	5.6816G	101.52	Inf	-Inf	3	Horizontal	358	1.59	-
5690MHz Straddle 5.47-5.725GHz	Pass	PK	5.4668G	59.34	68.20	-8.86	3	Horizontal	358	1.59	-
5690MHz Straddle 5.47-5.725GHz	Pass	PK	5.6888G	113.37	Inf	-Inf	3	Horizontal	358	1.59	-
5690MHz Straddle 5.47-5.725GHz	Pass	PK	5.8664G	67.96	68.20	-0.24	3	Horizontal	358	1.59	-
5690MHz Straddle 5.47-5.725GHz	Pass	AV	3.79332G	41.95	54.00	-12.05	3	Vertical	196	1.88	-
5690MHz Straddle 5.47-5.725GHz	Pass	AV	11.3765G	42.06	54.00	-11.94	3	Vertical	315	1.62	-
5690MHz Straddle 5.47-5.725GHz	Pass	PK	3.79329G	46.23	74.00	-27.77	3	Vertical	196	1.88	-
5690MHz Straddle 5.47-5.725GHz	Pass	PK	11.37544G	54.75	74.00	-19.25	3	Vertical	315	1.62	-
5690MHz Straddle 5.47-5.725GHz	Pass	PK	17.07216G	64.48	68.20	-3.72	3	Vertical	133	2.02	-
5690MHz Straddle 5.47-5.725GHz	Pass	AV	3.79335G	44.96	54.00	-9.04	3	Horizontal	245	2.79	-
5690MHz Straddle 5.47-5.725GHz	Pass	AV	11.38266G	42.31	54.00	-11.69	3	Horizontal	14	2.19	-
5690MHz Straddle 5.47-5.725GHz	Pass	PK	3.79327G	48.24	74.00	-25.76	3	Horizontal	245	2.79	-
5690MHz Straddle 5.47-5.725GHz	Pass	PK	11.37922G	54.51	74.00	-19.49	3	Horizontal	14	2.19	-
5690MHz Straddle 5.47-5.725GHz	Pass	PK	17.06824G	64.24	68.20	-3.96	3	Horizontal	240	2.33	-



802.11a_Nss1,(6Mbps)_1TX

28/12/2019

5260MHz_TX



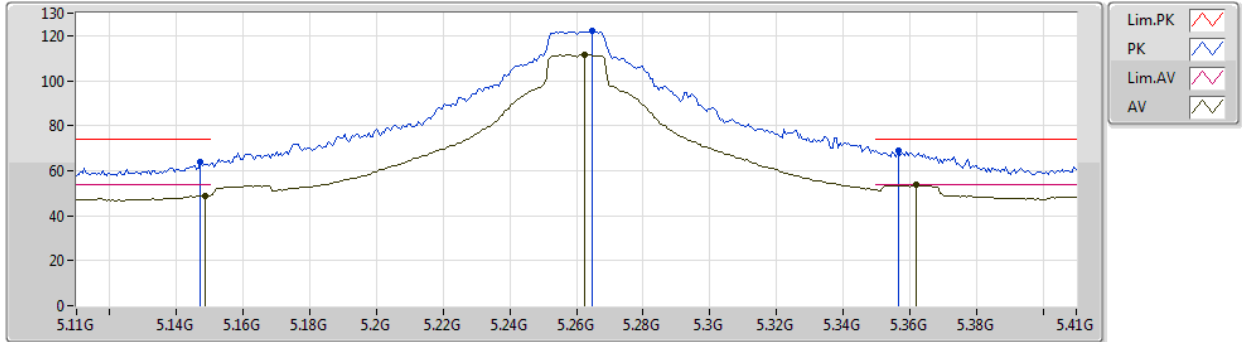
Type	Freq (Hz)	Level (dBuV/m)	Limit (dBuV/m)	Margin (dB)	Factor (dB)	Dist (m)	Condition	Azimuth (°)	Height (m)	Comment	Raw (dBuV)	AF (dB)	CL (dB)	PA (dB)
AV	5.149G	44.89	54.00	-9.11	5.47	3	Vertical	300	2.89	-	39.42	32.00	7.31	33.84
AV	5.2618G	97.97	Inf	-Inf	5.04	3	Vertical	300	2.89	-	92.93	31.45	7.45	33.86
AV	5.353G	44.84	54.00	-9.16	4.95	3	Vertical	300	2.89	-	39.89	31.32	7.51	33.88
PK	5.149G	57.90	74.00	-16.10	5.47	3	Vertical	300	2.89	-	52.43	32.00	7.31	33.84
PK	5.2576G	108.10	Inf	-Inf	5.06	3	Vertical	300	2.89	-	103.04	31.47	7.45	33.86
PK	5.3518G	57.66	74.00	-16.34	4.94	3	Vertical	300	2.89	-	52.72	31.31	7.51	33.88



802.11a_Nss1,(6Mbps)_1TX

28/12/2019

5260MHz_TX



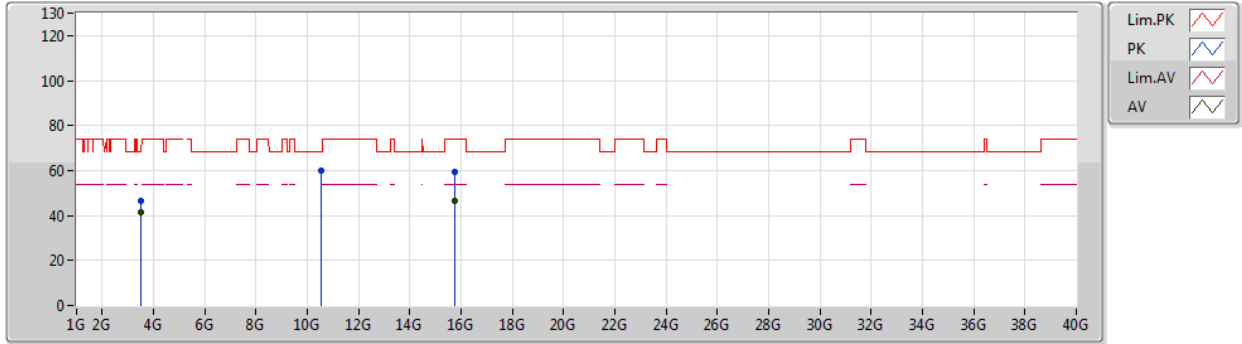
Type	Freq (Hz)	Level (dBuV/m)	Limit (dBuV/m)	Margin (dB)	Factor (dB)	Dist (m)	Condition	Azimuth (°)	Height (m)	Comment	Raw (dBuV)	AF (dB)	CL (dB)	PA (dB)
AV	5.1484G	48.79	54.00	-5.21	5.46	3	Horizontal	355	1.72	-	43.33	32.00	7.30	33.84
AV	5.2624G	111.75	Inf	-Inf	5.04	3	Horizontal	355	1.72	-	106.71	31.45	7.45	33.86
AV	5.362G	53.68	54.00	-0.32	5.00	3	Horizontal	355	1.72	-	48.68	31.37	7.52	33.89
PK	5.1472G	63.66	74.00	-10.34	5.46	3	Horizontal	355	1.72	-	58.20	32.00	7.30	33.84
PK	5.2648G	122.18	Inf	-Inf	5.03	3	Horizontal	355	1.72	-	117.15	31.44	7.45	33.86
PK	5.3566G	68.75	74.00	-5.25	4.96	3	Horizontal	355	1.72	-	63.79	31.34	7.51	33.89



802.11a_Nss1,(6Mbps)_1TX

28/12/2019

5260MHz_TX



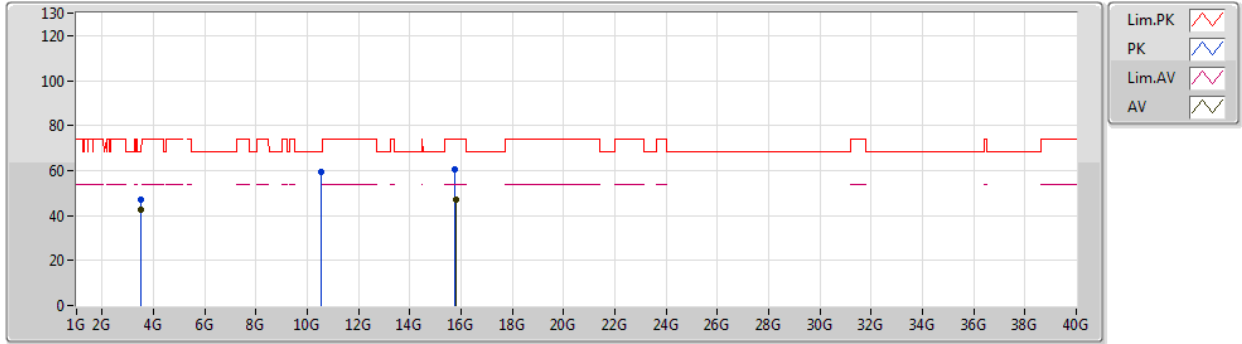
Type	Freq (Hz)	Level (dBuV/m)	Limit (dBuV/m)	Margin (dB)	Factor (dB)	Dist (m)	Condition	Azimuth (°)	Height (m)	Comment	Raw (dBuV)	AF (dB)	CL (dB)	PA (dB)
AV	3.50664G	41.33	54.00	-12.67	0.52	3	Vertical	54	1.69	-	40.81	28.83	5.83	34.14
AV	15.77832G	46.35	54.00	-7.65	18.36	3	Vertical	11	1.49	-	27.99	37.52	13.28	32.44
PK	3.50664G	46.23	74.00	-27.77	0.52	3	Vertical	54	1.69	-	45.71	28.83	5.83	34.14
PK	10.5176G	59.93	68.20	-8.27	16.40	3	Vertical	356	1.57	-	43.53	39.74	10.76	34.10
PK	15.7704G	59.37	74.00	-14.63	18.36	3	Vertical	11	1.49	-	41.01	37.53	13.27	32.44



802.11a_Nss1,(6Mbps)_1TX

28/12/2019

5260MHz_TX



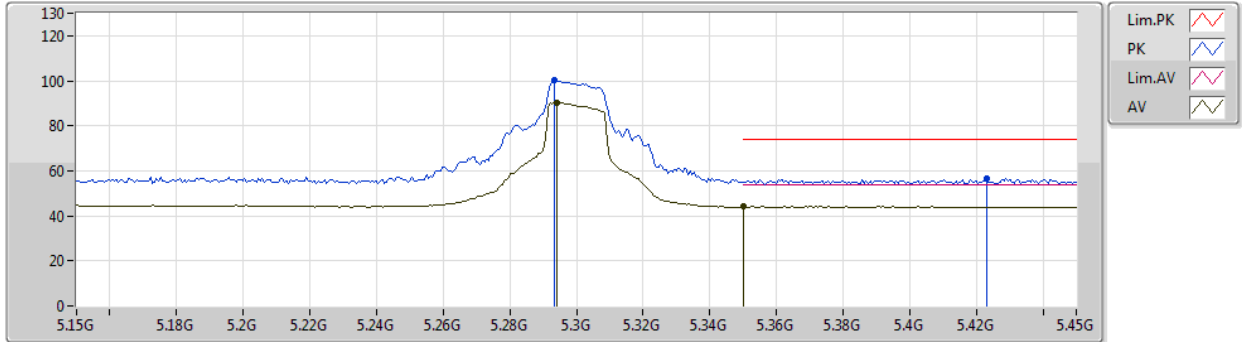
Type	Freq (Hz)	Level (dBuV/m)	Limit (dBuV/m)	Margin (dB)	Factor (dB)	Dist (m)	Condition	Azimuth (°)	Height (m)	Comment	Raw (dBuV)	AF (dB)	CL (dB)	PA (dB)
AV	3.50665G	42.58	54.00	-11.42	0.52	3	Horizontal	121	1.61	-	42.06	28.83	5.83	34.14
AV	15.7794G	47.19	54.00	-6.81	18.36	3	Horizontal	334	1.55	-	28.83	37.52	13.28	32.44
PK	3.50674G	47.22	74.00	-26.78	0.52	3	Horizontal	121	1.61	-	46.70	28.83	5.83	34.14
PK	10.51742G	59.65	68.20	-8.55	16.39	3	Horizontal	340	1.50	-	43.26	39.73	10.76	34.10
PK	15.77556G	60.53	74.00	-13.47	18.35	3	Horizontal	334	1.55	-	42.18	37.52	13.27	32.44



802.11a_Nss1,(6Mbps)_1TX

28/12/2019

5300MHz_TX



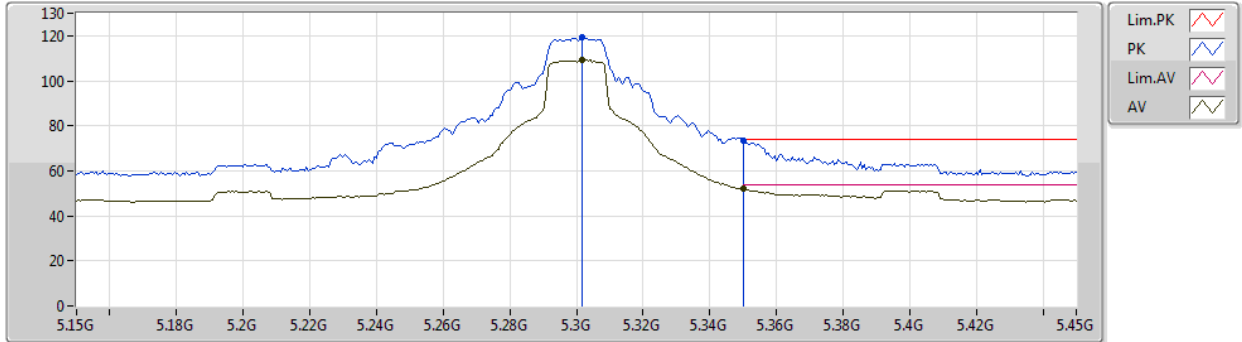
Type	Freq (Hz)	Level (dBuV/m)	Limit (dBuV/m)	Margin (dB)	Factor (dB)	Dist (m)	Condition	Azimuth (°)	Height (m)	Comment	Raw (dBuV)	AF (dB)	CL (dB)	PA (dB)
AV	5.294G	90.17	Inf	-Inf	4.92	3	Vertical	108	2.83	-	85.25	31.32	7.47	33.87
AV	5.35G	44.09	54.00	-9.91	4.93	3	Vertical	108	2.83	-	39.16	31.30	7.51	33.88
PK	5.2934G	100.06	Inf	-Inf	4.93	3	Vertical	108	2.83	-	95.13	31.33	7.47	33.87
PK	5.423G	56.66	74.00	-17.34	5.28	3	Vertical	108	2.83	-	51.38	31.69	7.49	33.90



802.11a_Nss1,(6Mbps)_1TX

28/12/2019

5300MHz_TX



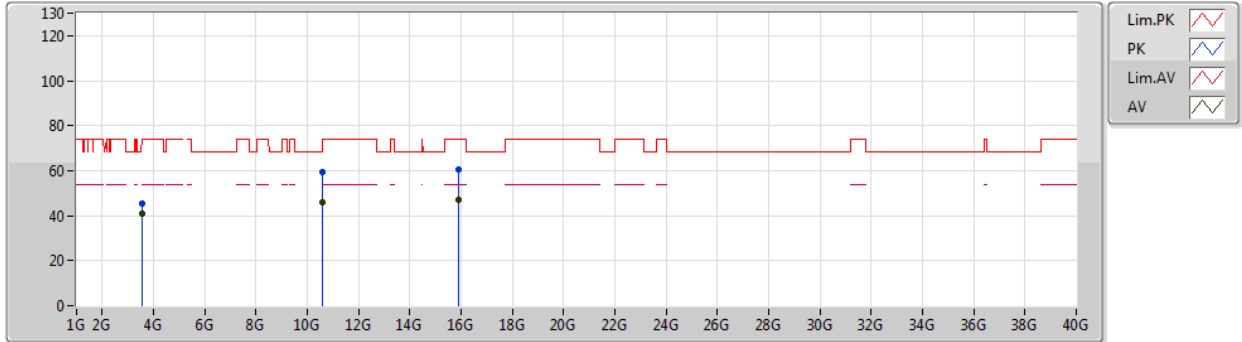
Type	Freq (Hz)	Level (dBuV/m)	Limit (dBuV/m)	Margin (dB)	Factor (dB)	Dist (m)	Condition	Azimuth (°)	Height (m)	Comment	Raw (dBuV)	AF (dB)	CL (dB)	PA (dB)
AV	5.3018G	109.02	Inf	-Inf	4.91	3	Horizontal	352	1.50	-	104.11	31.30	7.48	33.87
AV	5.35G	51.87	54.00	-2.13	4.93	3	Horizontal	352	1.50	-	46.94	31.30	7.51	33.88
PK	5.3018G	119.18	Inf	-Inf	4.91	3	Horizontal	352	1.50	-	114.27	31.30	7.48	33.87
PK	5.35G	73.24	74.00	-0.76	4.93	3	Horizontal	352	1.50	-	68.31	31.30	7.51	33.88



802.11a_Nss1,(6Mbps)_1TX

28/12/2019

5300MHz_TX



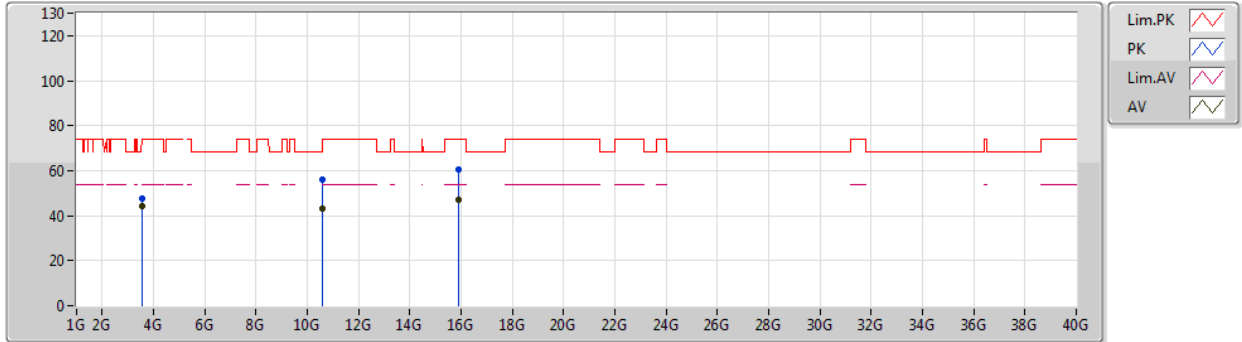
Type	Freq (Hz)	Level (dBuV/m)	Limit (dBuV/m)	Margin (dB)	Factor (dB)	Dist (m)	Condition	Azimuth (°)	Height (m)	Comment	Raw (dBuV)	AF (dB)	CL (dB)	PA (dB)
AV	3.53334G	40.79	54.00	-13.21	0.69	3	Vertical	25	1.46	-	40.10	28.93	5.89	34.13
AV	10.60078G	45.84	54.00	-8.16	16.67	3	Vertical	173	1.49	-	29.17	39.90	10.83	34.06
AV	15.90102G	46.97	54.00	-7.03	18.12	3	Vertical	46	1.50	-	28.85	37.30	13.34	32.52
PK	3.53345G	45.61	74.00	-28.39	0.69	3	Vertical	25	1.46	-	44.92	28.93	5.89	34.13
PK	10.59784G	59.37	68.20	-8.83	16.67	3	Vertical	173	1.49	-	42.70	39.90	10.83	34.06
PK	15.91068G	60.28	74.00	-13.72	18.10	3	Vertical	46	1.50	-	42.18	37.28	13.34	32.52



802.11a_Nss1,(6Mbps)_1TX

28/12/2019

5300MHz_TX



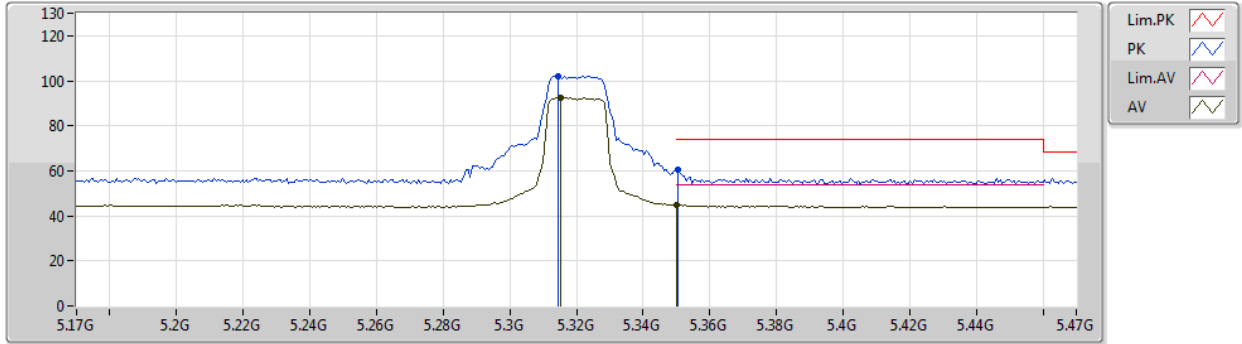
Type	Freq (Hz)	Level (dBuV/m)	Limit (dBuV/m)	Margin (dB)	Factor (dB)	Dist (m)	Condition	Azimuth (°)	Height (m)	Comment	Raw (dBuV)	AF (dB)	CL (dB)	PA (dB)
AV	3.53334G	44.24	54.00	-9.76	0.69	3	Horizontal	122	1.60	-	43.55	28.93	5.89	34.13
AV	10.60054G	42.97	54.00	-11.03	16.67	3	Horizontal	34	1.48	-	26.30	39.90	10.83	34.06
AV	15.90096G	47.33	54.00	-6.67	18.12	3	Horizontal	336	1.41	-	29.21	37.30	13.34	32.52
PK	3.53334G	47.65	74.00	-26.35	0.69	3	Horizontal	122	1.60	-	46.96	28.93	5.89	34.13
PK	10.59988G	56.11	68.20	-12.09	16.67	3	Horizontal	34	1.48	-	39.44	39.90	10.83	34.06
PK	15.90198G	60.75	74.00	-13.25	18.12	3	Horizontal	336	1.41	-	42.63	37.30	13.34	32.52



802.11a_Nss1,(6Mbps)_1TX

28/12/2019

5320MHz_TX



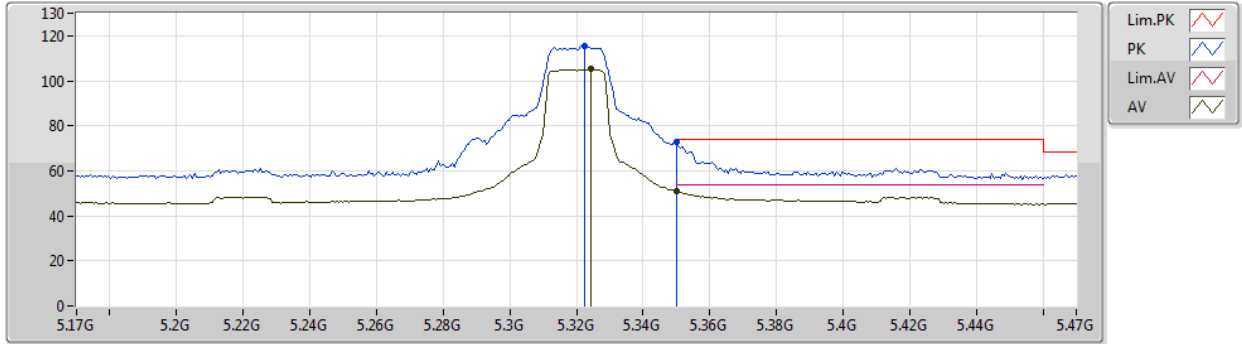
Type	Freq (Hz)	Level (dBuV/m)	Limit (dBuV/m)	Margin (dB)	Factor (dB)	Dist (m)	Condition	Azimuth (°)	Height (m)	Comment	Raw (dBuV)	AF (dB)	CL (dB)	PA (dB)
AV	5.3152G	92.37	Inf	-Inf	4.90	3	Vertical	59	3.00	-	87.47	31.30	7.48	33.88
AV	5.35G	44.80	54.00	-9.20	4.93	3	Vertical	59	3.00	-	39.87	31.30	7.51	33.88
PK	5.3146G	102.12	Inf	-Inf	4.90	3	Vertical	59	3.00	-	97.22	31.30	7.48	33.88
PK	5.3506G	60.35	74.00	-13.65	4.93	3	Vertical	59	3.00	-	55.42	31.30	7.51	33.88



802.11a_Nss1,(6Mbps)_1TX

28/12/2019

5320MHz_TX



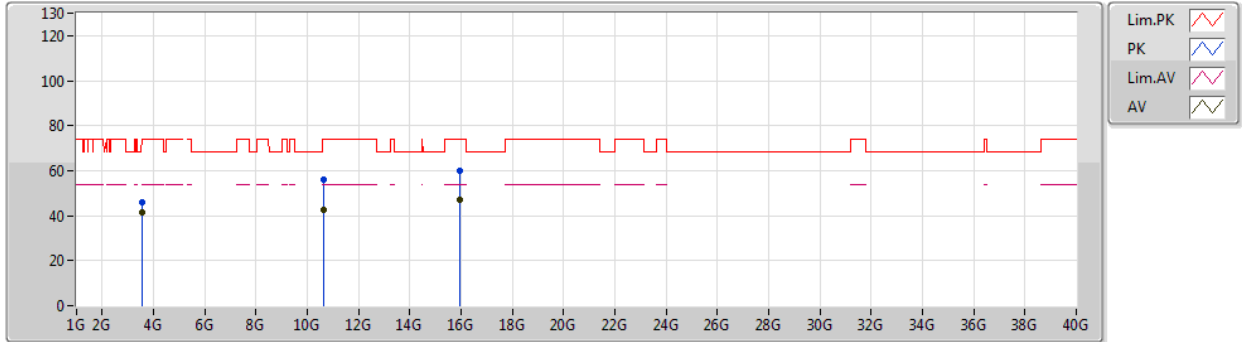
Type	Freq (Hz)	Level (dBuV/m)	Limit (dBuV/m)	Margin (dB)	Factor (dB)	Dist (m)	Condition	Azimuth (°)	Height (m)	Comment	Raw (dBuV)	AF (dB)	CL (dB)	PA (dB)
AV	5.3242G	105.18	Inf	-Inf	4.91	3	Horizontal	353	1.60	-	100.27	31.30	7.49	33.88
AV	5.35G	50.90	54.00	-3.10	4.93	3	Horizontal	353	1.60	-	45.97	31.30	7.51	33.88
PK	5.3224G	115.35	Inf	-Inf	4.91	3	Horizontal	353	1.60	-	110.44	31.30	7.49	33.88
PK	5.35G	73.11	74.00	-0.89	4.93	3	Horizontal	353	1.60	-	68.18	31.30	7.51	33.88



802.11a_Nss1,(6Mbps)_1TX

28/12/2019

5320MHz_TX



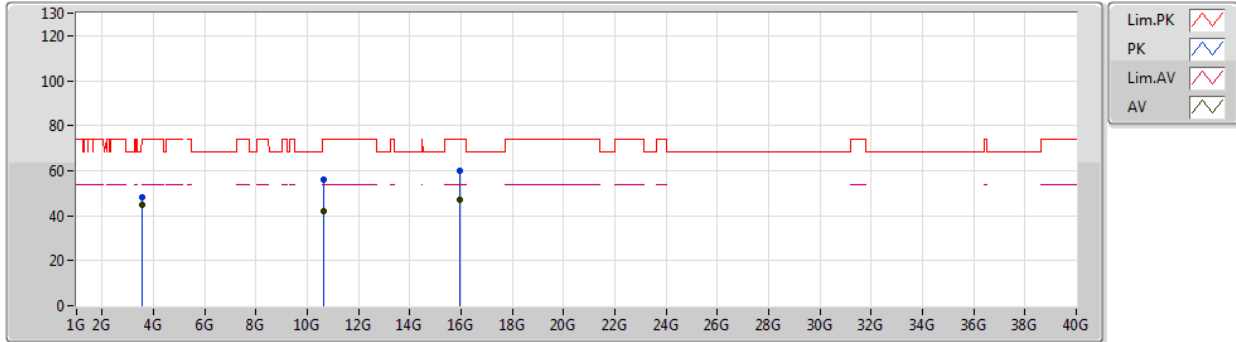
Type	Freq (Hz)	Level (dBuV/m)	Limit (dBuV/m)	Margin (dB)	Factor (dB)	Dist (m)	Condition	Azimuth (°)	Height (m)	Comment	Raw (dBuV)	AF (dB)	CL (dB)	PA (dB)
AV	3.54659G	41.31	54.00	-12.69	0.78	3	Vertical	24	1.50	-	40.53	28.99	5.92	34.13
AV	10.64024G	42.57	54.00	-11.43	16.73	3	Vertical	172	1.47	-	25.84	39.90	10.87	34.04
AV	15.97212G	47.09	54.00	-6.91	17.98	3	Vertical	183	1.49	-	29.11	37.16	13.38	32.56
PK	3.54656G	46.21	74.00	-27.79	0.78	3	Vertical	24	1.50	-	45.43	28.99	5.92	34.13
PK	10.63694G	55.81	74.00	-18.19	16.72	3	Vertical	172	1.47	-	39.09	39.90	10.86	34.04
PK	15.97128G	60.14	74.00	-13.86	17.98	3	Vertical	183	1.49	-	42.16	37.16	13.38	32.56



802.11a_Nss1,(6Mbps)_1TX

28/12/2019

5320MHz_TX



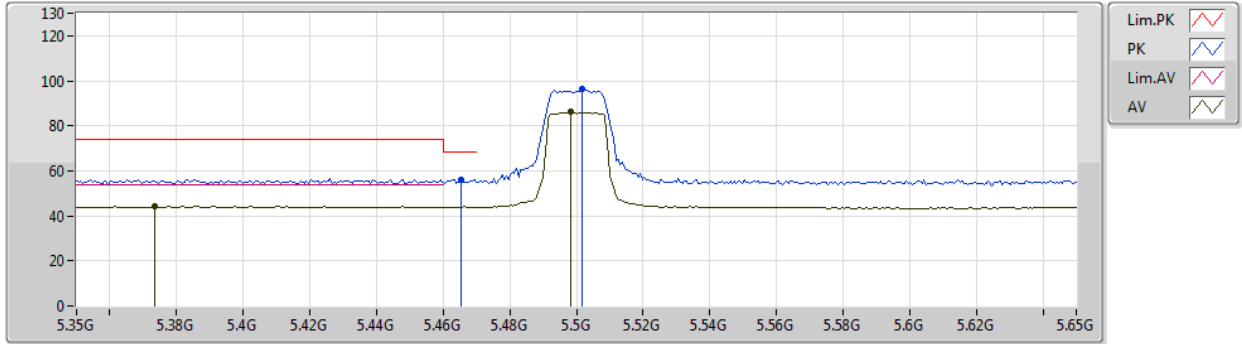
Type	Freq (Hz)	Level (dBuV/m)	Limit (dBuV/m)	Margin (dB)	Factor (dB)	Dist (m)	Condition	Azimuth (°)	Height (m)	Comment	Raw (dBuV)	AF (dB)	CL (dB)	PA (dB)
AV	3.54665G	44.86	54.00	-9.14	0.78	3	Horizontal	119	1.72	-	44.08	28.99	5.92	34.13
AV	10.6517G	41.93	54.00	-12.07	16.75	3	Horizontal	275	1.49	-	25.18	39.90	10.88	34.03
AV	15.95874G	46.80	54.00	-7.20	18.00	3	Horizontal	55	1.49	-	28.80	37.18	13.37	32.55
PK	3.54673G	48.24	74.00	-25.76	0.78	3	Horizontal	119	1.72	-	47.46	28.99	5.92	34.13
PK	10.62902G	56.01	74.00	-17.99	16.72	3	Horizontal	275	1.49	-	39.29	39.90	10.86	34.04
PK	15.97218G	60.22	74.00	-13.78	17.98	3	Horizontal	55	1.49	-	42.24	37.16	13.38	32.56



802.11a_Nss1,(6Mbps)_1TX

28/12/2019

5500MHz_TX



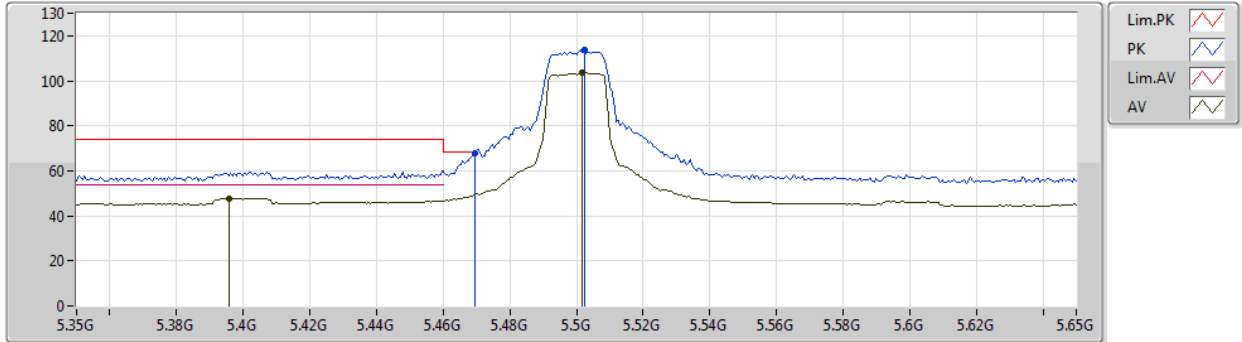
Type	Freq (Hz)	Level (dBuV/m)	Limit (dBuV/m)	Margin (dB)	Factor (dB)	Dist (m)	Condition	Azimuth (°)	Height (m)	Comment	Raw (dBuV)	AF (dB)	CL (dB)	PA (dB)
AV	5.3734G	44.33	54.00	-9.67	5.07	3	Vertical	108	2.60	-	39.26	31.44	7.52	33.89
AV	5.4982G	86.13	Inf	-Inf	5.30	3	Vertical	108	2.60	-	80.83	31.90	7.32	33.92
PK	5.4652G	56.26	68.20	-11.94	5.32	3	Vertical	108	2.60	-	50.94	31.83	7.40	33.91
PK	5.5018G	96.61	Inf	-Inf	5.30	3	Vertical	108	2.60	-	91.31	31.90	7.32	33.92



802.11a_Nss1,(6Mbps)_1TX

28/12/2019

5500MHz_TX



Type	Freq (Hz)	Level (dBuV/m)	Limit (dBuV/m)	Margin (dB)	Factor (dB)	Dist (m)	Condition	Azimuth (°)	Height (m)	Comment	Raw (dBuV)	AF (dB)	CL (dB)	PA (dB)
AV	5.3956G	47.75	54.00	-6.25	5.22	3	Horizontal	360	1.63	-	42.53	31.57	7.54	33.89
AV	5.5018G	103.50	Inf	-Inf	5.30	3	Horizontal	360	1.63	-	98.20	31.90	7.32	33.92
PK	5.4694G	67.80	68.20	-0.40	5.32	3	Horizontal	360	1.63	-	62.48	31.84	7.39	33.91
PK	5.5024G	113.85	Inf	-Inf	5.29	3	Horizontal	360	1.63	-	108.56	31.90	7.31	33.92



802.11a_Nss1,(6Mbps)_1TX

28/12/2019

5500MHz_TX



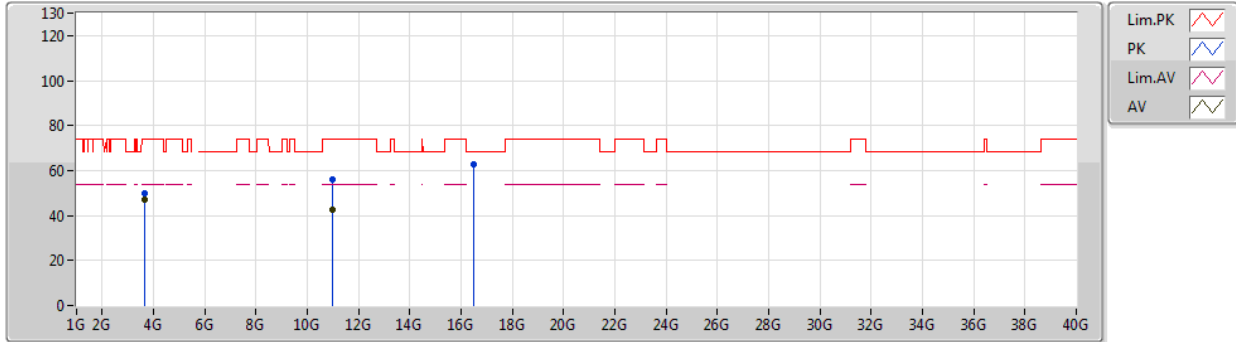
Type	Freq (Hz)	Level (dBuV/m)	Limit (dBuV/m)	Margin (dB)	Factor (dB)	Dist (m)	Condition	Azimuth (°)	Height (m)	Comment	Raw (dBuV)	AF (dB)	CL (dB)	PA (dB)
AV	3.66665G	43.06	54.00	-10.94	1.26	3	Vertical	18	1.48	-	41.80	29.30	6.05	34.09
AV	10.98896G	42.39	54.00	-11.61	17.51	3	Vertical	57	1.49	-	24.88	40.19	11.18	33.86
PK	3.66662G	47.37	74.00	-26.63	1.26	3	Vertical	18	1.48	-	46.11	29.30	6.05	34.09
PK	11.0036G	55.57	74.00	-18.43	17.53	3	Vertical	57	1.49	-	38.04	40.19	11.19	33.85
PK	16.49742G	62.98	68.20	-5.22	20.04	3	Vertical	287	1.49	-	42.94	38.49	13.74	32.19



802.11a_Nss1,(6Mbps)_1TX

28/12/2019

5500MHz_TX



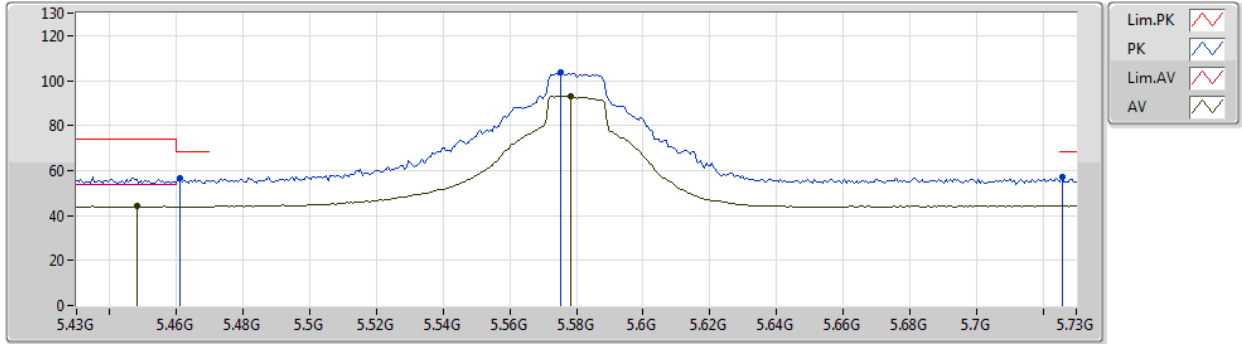
Type	Freq (Hz)	Level (dBuV/m)	Limit (dBuV/m)	Margin (dB)	Factor (dB)	Dist (m)	Condition	Azimuth (°)	Height (m)	Comment	Raw (dBuV)	AF (dB)	CL (dB)	PA (dB)
AV	3.66665G	47.02	54.00	-6.98	1.26	3	Horizontal	125	1.38	-	45.76	29.30	6.05	34.09
AV	11.00132G	42.49	54.00	-11.51	17.54	3	Horizontal	267	1.48	-	24.95	40.20	11.19	33.85
PK	3.66664G	50.08	74.00	-23.92	1.26	3	Horizontal	125	1.38	-	48.82	29.30	6.05	34.09
PK	11.00768G	55.78	74.00	-18.22	17.52	3	Horizontal	267	1.48	-	38.26	40.18	11.19	33.85
PK	16.50018G	63.00	68.20	-5.20	20.06	3	Horizontal	154	1.23	-	42.94	38.50	13.75	32.19



802.11a_Nss1,(6Mbps)_1TX

28/12/2019

5580MHz_TX



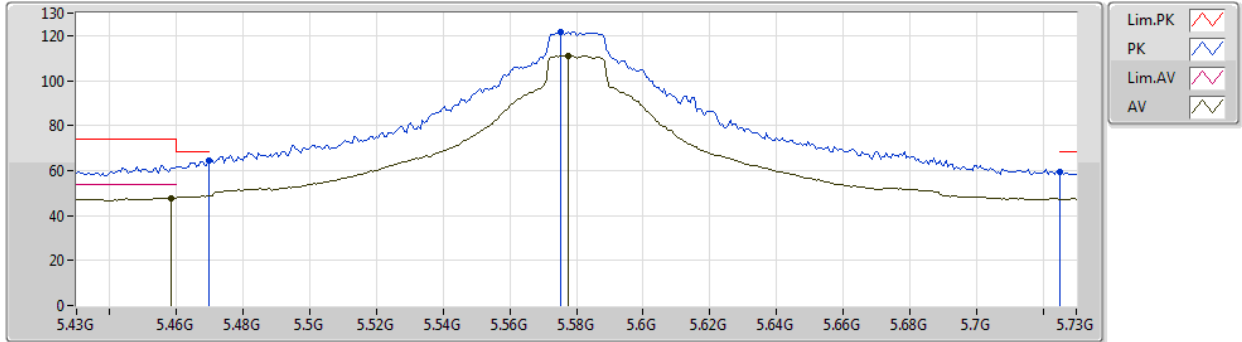
Type	Freq (Hz)	Level (dBuV/m)	Limit (dBuV/m)	Margin (dB)	Factor (dB)	Dist (m)	Condition	Azimuth (°)	Height (m)	Comment	Raw (dBuV)	AF (dB)	CL (dB)	PA (dB)
AV	5.448G	44.05	54.00	-9.95	5.31	3	Vertical	108	2.78	-	38.74	31.79	7.43	33.91
AV	5.5782G	93.06	Inf	-Inf	5.06	3	Vertical	108	2.78	-	88.00	31.84	7.15	33.93
PK	5.4612G	56.45	68.20	-11.75	5.32	3	Vertical	108	2.78	-	51.13	31.82	7.41	33.91
PK	5.5752G	103.48	Inf	-Inf	5.07	3	Vertical	108	2.78	-	98.41	31.85	7.15	33.93
PK	5.7258G	56.95	68.20	-11.25	5.67	3	Vertical	108	2.78	-	51.28	32.00	7.63	33.96



802.11a_Nss1,(6Mbps)_1TX

28/12/2019

5580MHz_TX



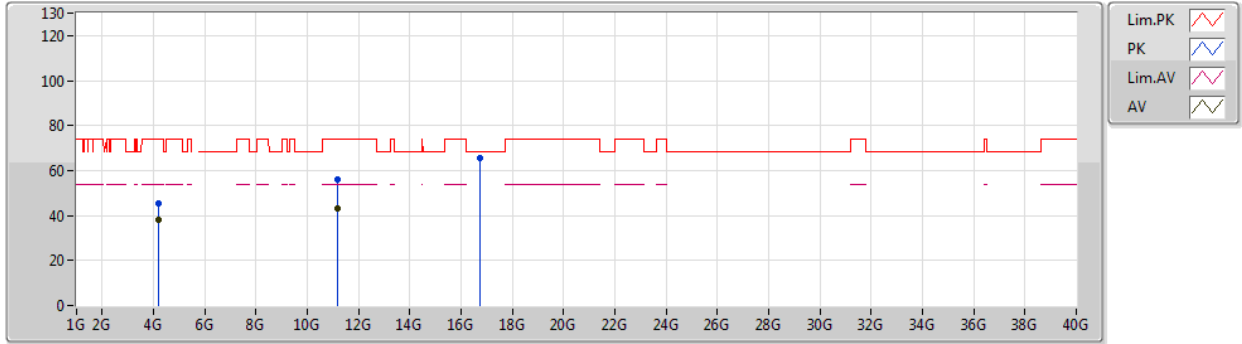
Type	Freq (Hz)	Level (dBuV/m)	Limit (dBuV/m)	Margin (dB)	Factor (dB)	Dist (m)	Condition	Azimuth (°)	Height (m)	Comment	Raw (dBuV)	AF (dB)	CL (dB)	PA (dB)
AV	5.4582G	47.90	54.00	-6.10	5.32	3	Horizontal	355	1.34	-	42.58	31.82	7.41	33.91
AV	5.5776G	111.15	Inf	-Inf	5.06	3	Horizontal	355	1.34	-	106.09	31.84	7.15	33.93
PK	5.4696G	64.23	68.20	-3.97	5.32	3	Horizontal	355	1.34	-	58.91	31.84	7.39	33.91
PK	5.5752G	121.58	Inf	-Inf	5.07	3	Horizontal	355	1.34	-	116.51	31.85	7.15	33.93
PK	5.7252G	59.29	68.20	-8.91	5.67	3	Horizontal	355	1.34	-	53.62	32.00	7.63	33.96



802.11a_Nss1,(6Mbps)_1TX

28/12/2019

5580MHz_TX



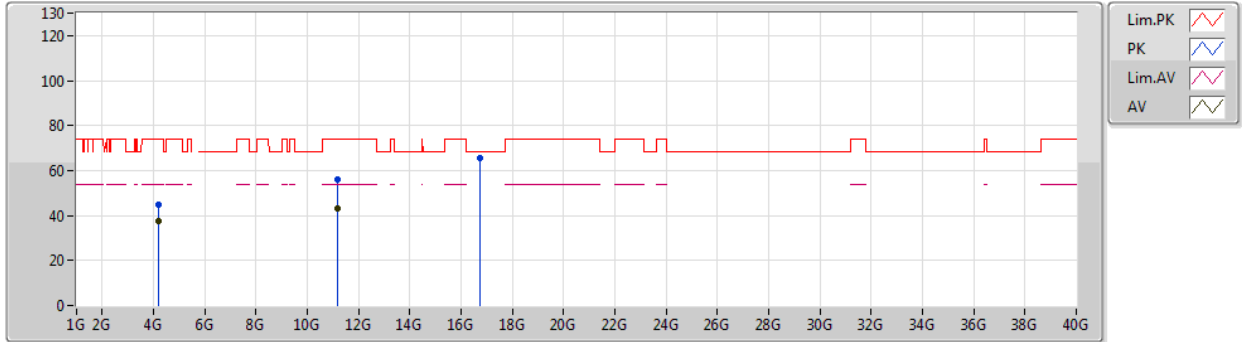
Type	Freq (Hz)	Level (dBuV/m)	Limit (dBuV/m)	Margin (dB)	Factor (dB)	Dist (m)	Condition	Azimuth (°)	Height (m)	Comment	Raw (dBuV)	AF (dB)	CL (dB)	PA (dB)
AV	4.185G	38.08	54.00	-15.92	2.37	3	Vertical	20	1.48	-	35.71	29.94	6.45	34.02
AV	11.16036G	43.30	54.00	-10.70	17.29	3	Vertical	347	2.05	-	26.01	39.78	11.33	33.82
PK	4.18497G	45.28	74.00	-28.72	2.37	3	Vertical	20	1.48	-	42.91	29.94	6.45	34.02
PK	11.16162G	55.88	74.00	-18.12	17.29	3	Vertical	347	2.05	-	38.59	39.78	11.33	33.82
PK	16.7442G	65.45	68.20	-2.75	21.72	3	Vertical	39	1.49	-	43.73	39.53	13.92	31.73



802.11a_Nss1,(6Mbps)_1TX

28/12/2019

5580MHz_TX



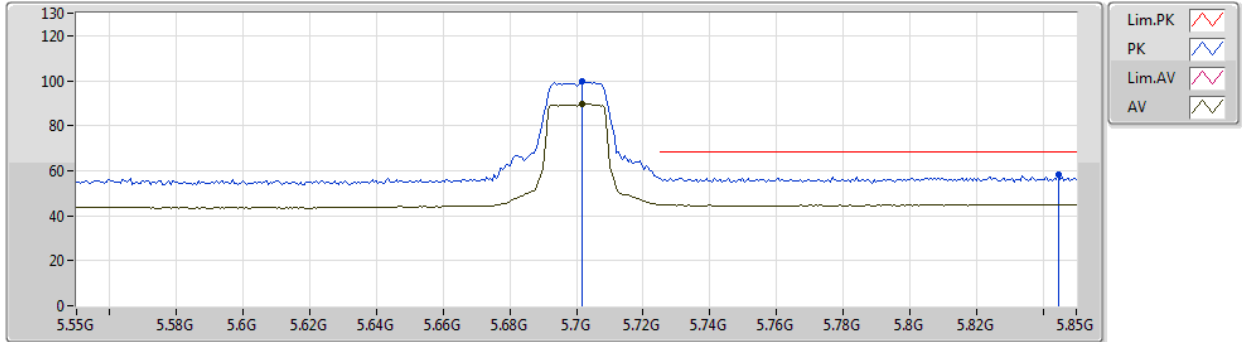
Type	Freq (Hz)	Level (dBuV/m)	Limit (dBuV/m)	Margin (dB)	Factor (dB)	Dist (m)	Condition	Azimuth (°)	Height (m)	Comment	Raw (dBuV)	AF (dB)	CL (dB)	PA (dB)
AV	4.18502G	37.78	54.00	-16.22	2.37	3	Horizontal	103	1.78	-	35.41	29.94	6.45	34.02
AV	11.15964G	43.22	54.00	-10.78	17.29	3	Horizontal	350	1.58	-	25.93	39.78	11.33	33.82
PK	4.18498G	44.96	74.00	-29.04	2.37	3	Horizontal	103	1.78	-	42.59	29.94	6.45	34.02
PK	11.16828G	56.09	74.00	-17.91	17.27	3	Horizontal	350	1.58	-	38.82	39.76	11.33	33.82
PK	16.7391G	65.55	68.20	-2.65	21.69	3	Horizontal	179	1.37	-	43.86	39.52	13.91	31.74



802.11a_Nss1,(6Mbps)_1TX

28/12/2019

5700MHz_TX



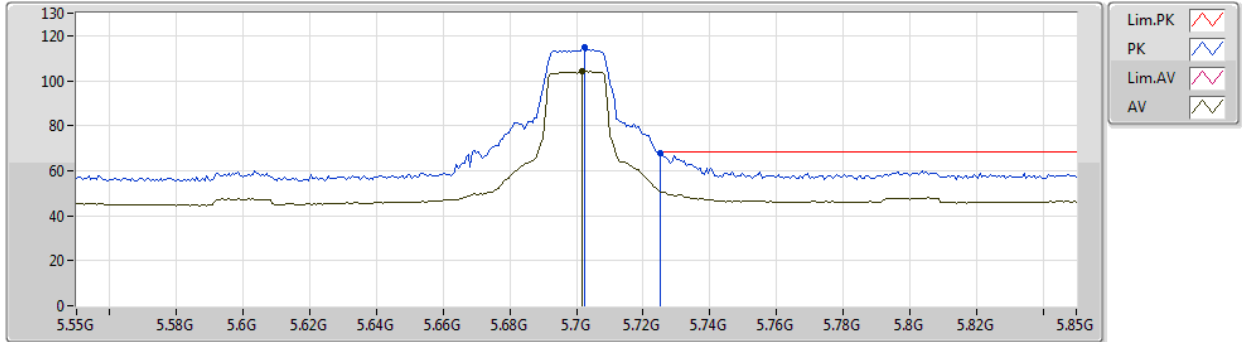
Type	Freq (Hz)	Level (dBuV/m)	Limit (dBuV/m)	Margin (dB)	Factor (dB)	Dist (m)	Condition	Azimuth (°)	Height (m)	Comment	Raw (dBuV)	AF (dB)	CL (dB)	PA (dB)
AV	5.7018G	89.64	Inf	-Inf	5.49	3	Vertical	24	1.00	-	84.15	31.91	7.53	33.95
PK	5.7018G	99.55	Inf	-Inf	5.49	3	Vertical	24	1.00	-	94.06	31.91	7.53	33.95
PK	5.8446G	58.38	68.20	-9.82	6.48	3	Vertical	24	1.00	-	51.90	32.39	8.07	33.98



802.11a_Nss1,(6Mbps)_1TX

28/12/2019

5700MHz_TX



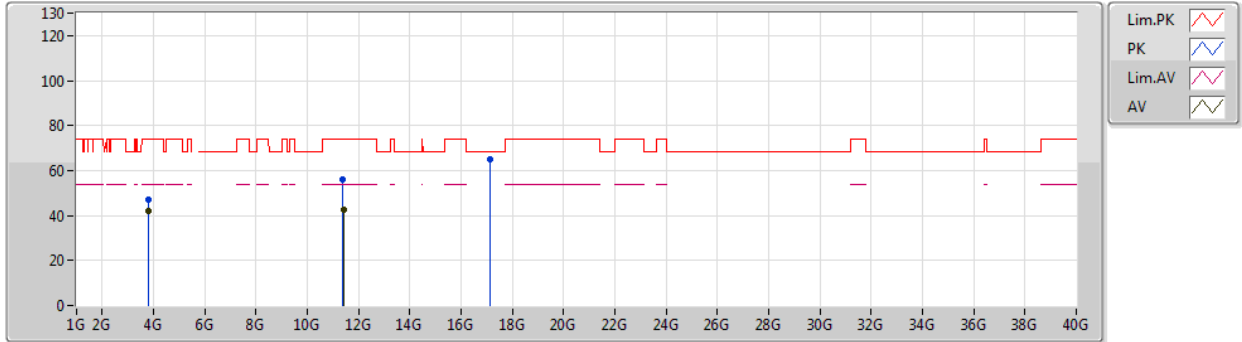
Type	Freq (Hz)	Level (dBuV/m)	Limit (dBuV/m)	Margin (dB)	Factor (dB)	Dist (m)	Condition	Azimuth (°)	Height (m)	Comment	Raw (dBuV)	AF (dB)	CL (dB)	PA (dB)
AV	5.7018G	104.35	Inf	-Inf	5.49	3	Horizontal	357	1.15	-	98.86	31.91	7.53	33.95
PK	5.7024G	114.72	Inf	-Inf	5.50	3	Horizontal	357	1.15	-	109.22	31.91	7.54	33.95
PK	5.7252G	67.57	68.20	-0.63	5.67	3	Horizontal	357	1.15	-	61.90	32.00	7.63	33.96



802.11a_Nss1,(6Mbps)_1TX

28/12/2019

5700MHz_TX



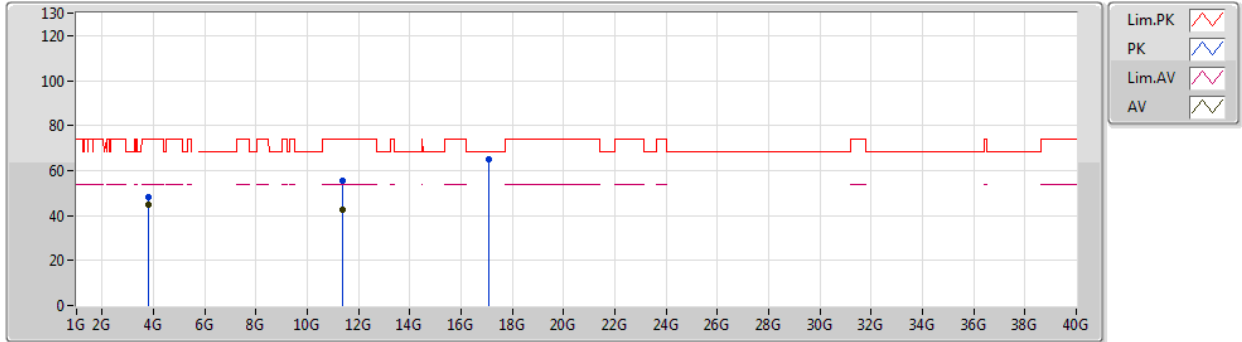
Type	Freq (Hz)	Level (dBuV/m)	Limit (dBuV/m)	Margin (dB)	Factor (dB)	Dist (m)	Condition	Azimuth (°)	Height (m)	Comment	Raw (dBuV)	AF (dB)	CL (dB)	PA (dB)
AV	3.8G	42.19	54.00	-11.81	1.53	3	Vertical	16	1.71	-	40.66	29.50	6.07	34.04
AV	11.40756G	42.51	54.00	-11.49	17.69	3	Vertical	11	1.49	-	24.82	39.92	11.55	33.78
PK	3.80013G	47.25	74.00	-26.75	1.53	3	Vertical	16	1.71	-	45.72	29.50	6.07	34.04
PK	11.40066G	55.90	74.00	-18.10	17.65	3	Vertical	11	1.49	-	38.25	39.90	11.54	33.79
PK	17.10822G	64.72	68.20	-3.48	22.80	3	Vertical	208	1.50	-	41.92	39.90	14.18	31.28



802.11a_Nss1,(6Mbps)_1TX

28/12/2019

5700MHz_TX



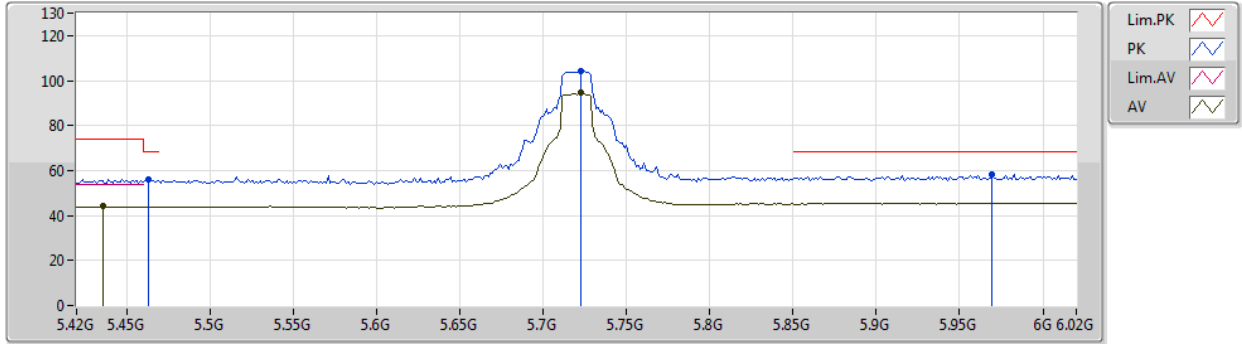
Type	Freq (Hz)	Level (dBuV/m)	Limit (dBuV/m)	Margin (dB)	Factor (dB)	Dist (m)	Condition	Azimuth (°)	Height (m)	Comment	Raw (dBuV)	AF (dB)	CL (dB)	PA (dB)
AV	3.80001G	44.62	54.00	-9.38	1.53	3	Horizontal	249	2.85	-	43.09	29.50	6.07	34.04
AV	11.38626G	42.39	54.00	-11.61	17.61	3	Horizontal	233	2.21	-	24.78	39.87	11.53	33.79
PK	3.8G	48.32	74.00	-25.68	1.53	3	Horizontal	249	2.85	-	46.79	29.50	6.07	34.04
PK	11.39466G	55.50	74.00	-18.50	17.63	3	Horizontal	233	2.21	-	37.87	39.89	11.53	33.79
PK	17.08764G	65.19	68.20	-3.01	22.79	3	Horizontal	213	1.48	-	42.40	39.91	14.16	31.28



802.11a_Nss1,(6Mbps)_1TX

28/12/2019

5720MHz Straddle 5.47-5.725GHz_TX



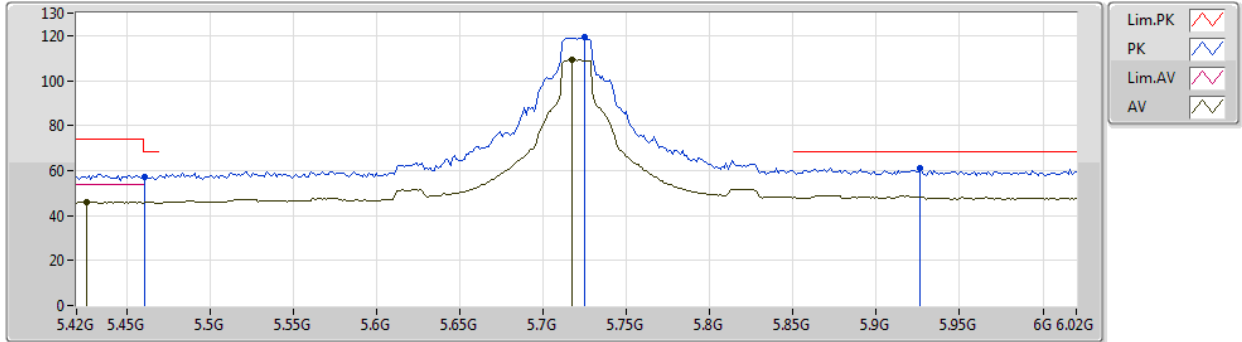
Type	Freq (Hz)	Level (dBuV/m)	Limit (dBuV/m)	Margin (dB)	Factor (dB)	Dist (m)	Condition	Azimuth (°)	Height (m)	Comment	Raw (dBuV)	AF (dB)	CL (dB)	PA (dB)
AV	5.4356G	44.11	54.00	-9.89	5.30	3	Vertical	24	1.00	-	38.81	31.74	7.46	33.90
AV	5.7224G	94.43	Inf	-Inf	5.65	3	Vertical	24	1.00	-	88.78	31.99	7.62	33.96
PK	5.4632G	55.92	68.20	-12.28	5.32	3	Vertical	24	1.00	-	50.60	31.83	7.40	33.91
PK	5.7224G	104.20	Inf	-Inf	5.65	3	Vertical	24	1.00	-	98.55	31.99	7.62	33.96
PK	5.9696G	58.46	68.20	-9.74	6.96	3	Vertical	24	1.00	-	51.50	32.54	8.42	34.00



802.11a_Nss1,(6Mbps)_1TX

28/12/2019

5720MHz Straddle 5.47-5.725GHz_TX



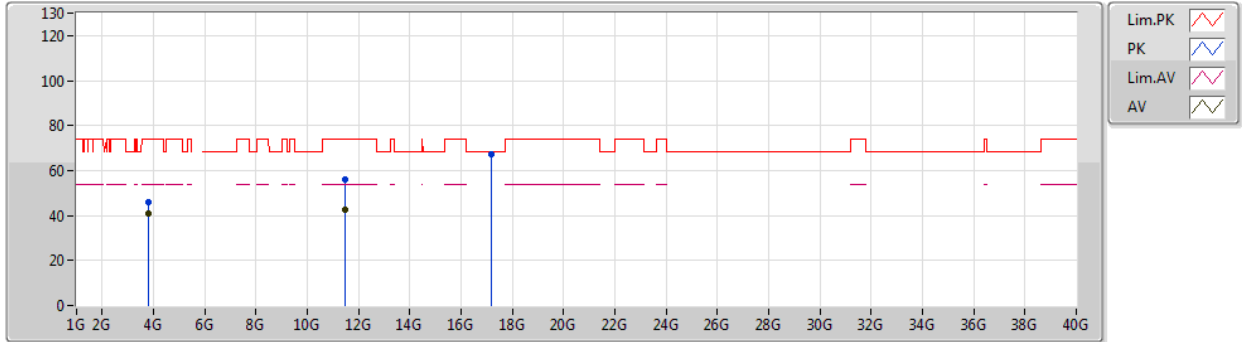
Type	Freq (Hz)	Level (dBuV/m)	Limit (dBuV/m)	Margin (dB)	Factor (dB)	Dist (m)	Condition	Azimuth (°)	Height (m)	Comment	Raw (dBuV)	AF (dB)	CL (dB)	PA (dB)
AV	5.426G	46.03	54.00	-7.97	5.28	3	Horizontal	360	1.48	-	40.75	31.70	7.48	33.90
AV	5.7176G	109.29	Inf	-Inf	5.62	3	Horizontal	360	1.48	-	103.67	31.97	7.60	33.95
PK	5.4608G	57.30	68.20	-10.90	5.32	3	Horizontal	360	1.48	-	51.98	31.82	7.41	33.91
PK	5.7248G	119.16	Inf	-Inf	5.67	3	Horizontal	360	1.48	-	113.49	32.00	7.63	33.96
PK	5.9264G	61.16	68.20	-7.04	6.81	3	Horizontal	360	1.48	-	54.35	32.50	8.30	33.99



802.11a_Nss1,(6Mbps)_1TX

28/12/2019

5720MHz Straddle 5.47-5.725GHz_TX



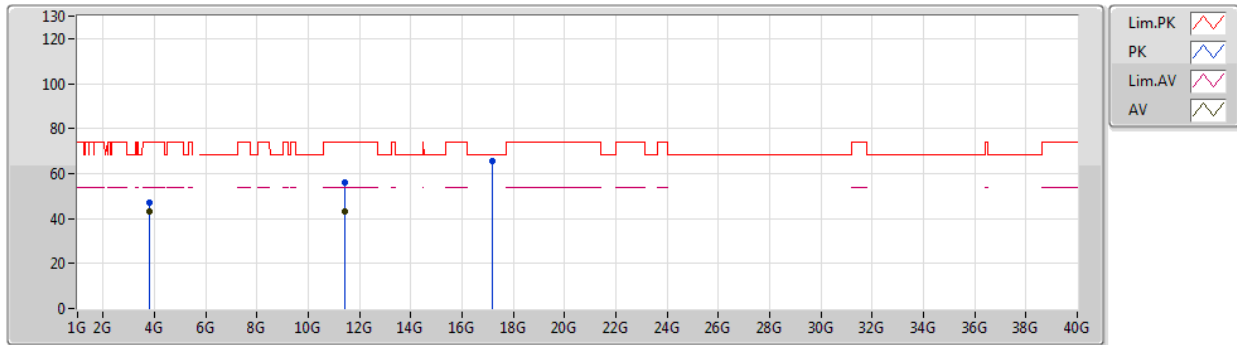
Type	Freq (Hz)	Level (dBuV/m)	Limit (dBuV/m)	Margin (dB)	Factor (dB)	Dist (m)	Condition	Azimuth (°)	Height (m)	Comment	Raw (dBuV)	AF (dB)	CL (dB)	PA (dB)
AV	3.81334G	41.11	54.00	-12.89	1.57	3	Vertical	6	1.80	-	39.54	29.53	6.08	34.04
AV	11.4517G	42.63	54.00	-11.37	17.80	3	Vertical	218	2.54	-	24.83	40.00	11.58	33.78
PK	3.8133G	46.00	74.00	-28.00	1.57	3	Vertical	6	1.80	-	44.43	29.53	6.08	34.04
PK	11.45176G	55.95	74.00	-18.05	17.80	3	Vertical	218	2.54	-	38.15	40.00	11.58	33.78
PK	17.15982G	67.07	68.20	-1.13	22.81	3	Vertical	22	1.60	-	44.26	39.90	14.21	31.30



802.11a_Nss1,(6Mbps)_1TX

28/12/2019

5720MHz_TX



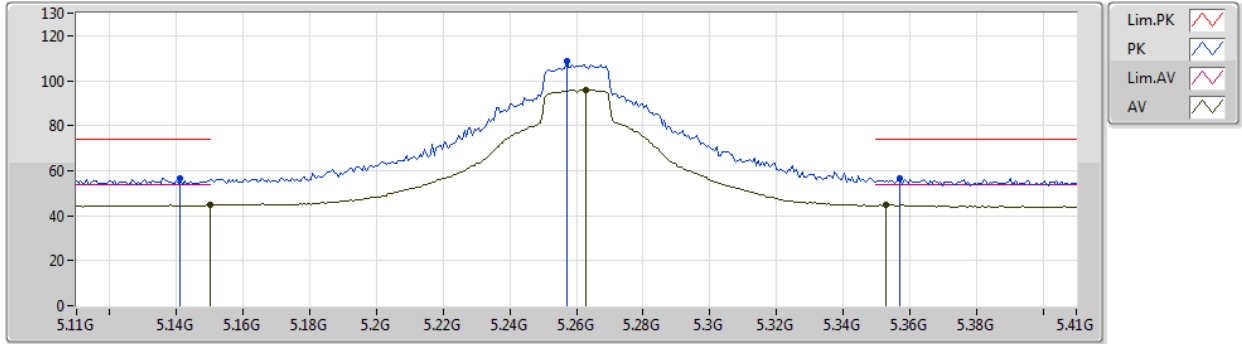
Type	Freq (Hz)	Level (dBuV/m)	Limit (dBuV/m)	Margin (dB)	Factor (dB)	Dist (m)	Condition	Azimuth (°)	Height (m)	Comment	Raw (dBuV)	AF (dB)	CL (dB)	PA (dB)
AV	3.81334G	42.95	54.00	-11.05	1.57	3	Horizontal	250	2.86	-	41.38	29.53	6.08	34.04
AV	11.44594G	43.05	54.00	-10.95	17.79	3	Horizontal	11	1.65	-	25.26	39.99	11.58	33.78
PK	3.81339G	46.99	74.00	-27.01	1.57	3	Horizontal	250	2.86	-	45.42	29.53	6.08	34.04
PK	11.44042G	56.29	74.00	-17.71	17.77	3	Horizontal	11	1.65	-	38.52	39.98	11.57	33.78
PK	17.16414G	65.72	68.20	-2.48	22.82	3	Horizontal	308	1.47	-	42.90	39.90	14.22	31.30



802.11ax HEW20_Nss1,(MCS0)_1TX

28/12/2019

5260MHz_TX



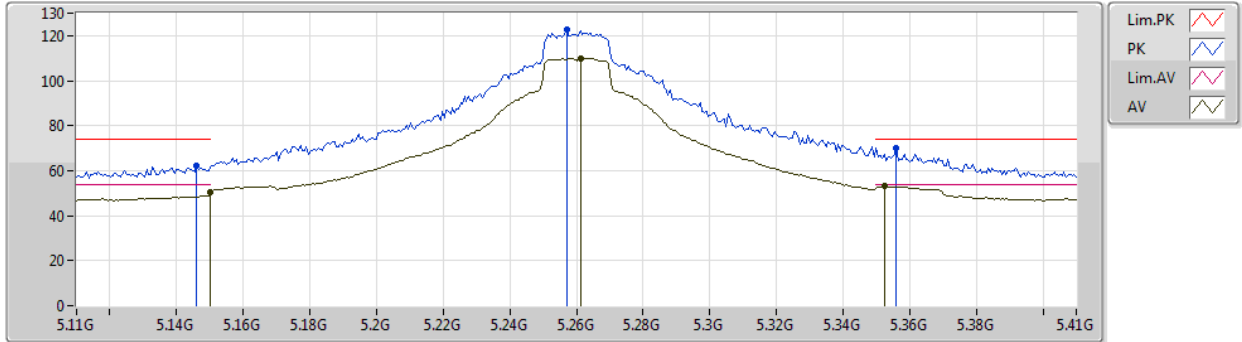
Type	Freq (Hz)	Level (dBuV/m)	Limit (dBuV/m)	Margin (dB)	Factor (dB)	Dist (m)	Condition	Azimuth (°)	Height (m)	Comment	Raw (dBuV)	AF (dB)	CL (dB)	PA (dB)
AV	5.15G	44.76	54.00	-9.24	5.47	3	Vertical	52	1.00	-	39.29	32.00	7.31	33.84
AV	5.263G	95.81	Inf	-Inf	5.04	3	Vertical	52	1.00	-	90.77	31.45	7.45	33.86
AV	5.353G	44.87	54.00	-9.13	4.95	3	Vertical	52	1.00	-	39.92	31.32	7.51	33.88
PK	5.1412G	56.83	74.00	-17.17	5.46	3	Vertical	52	1.00	-	51.37	32.00	7.29	33.83
PK	5.257G	108.68	Inf	-Inf	5.06	3	Vertical	52	1.00	-	103.62	31.47	7.45	33.86
PK	5.3572G	56.67	74.00	-17.33	4.96	3	Vertical	52	1.00	-	51.71	31.34	7.51	33.89



802.11ax HEW20_Nss1,(MCS0)_1TX

28/12/2019

5260MHz_TX



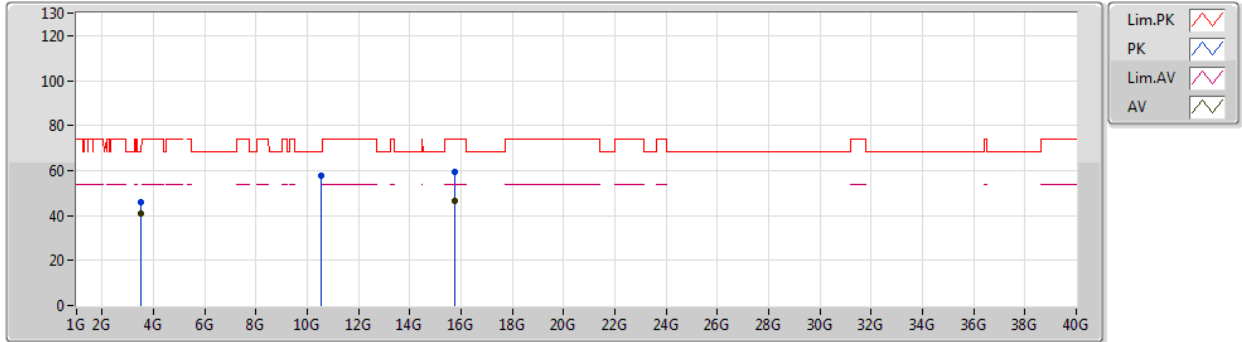
Type	Freq (Hz)	Level (dBuV/m)	Limit (dBuV/m)	Margin (dB)	Factor (dB)	Dist (m)	Condition	Azimuth (°)	Height (m)	Comment	Raw (dBuV)	AF (dB)	CL (dB)	PA (dB)
AV	5.15G	50.21	54.00	-3.79	5.47	3	Horizontal	360	1.48	-	44.74	32.00	7.31	33.84
AV	5.2612G	109.97	Inf	-Inf	5.05	3	Horizontal	360	1.48	-	104.92	31.46	7.45	33.86
AV	5.3524G	53.22	54.00	-0.78	4.94	3	Horizontal	360	1.48	-	48.28	31.31	7.51	33.88
PK	5.146G	62.15	74.00	-11.85	5.46	3	Horizontal	360	1.48	-	56.69	32.00	7.30	33.84
PK	5.257G	122.70	Inf	-Inf	5.06	3	Horizontal	360	1.48	-	117.64	31.47	7.45	33.86
PK	5.356G	70.14	74.00	-3.86	4.96	3	Horizontal	360	1.48	-	65.18	31.34	7.51	33.89



802.11ax HEW20_Nss1,(MCS0)_1TX

28/12/2019

5260MHz_TX



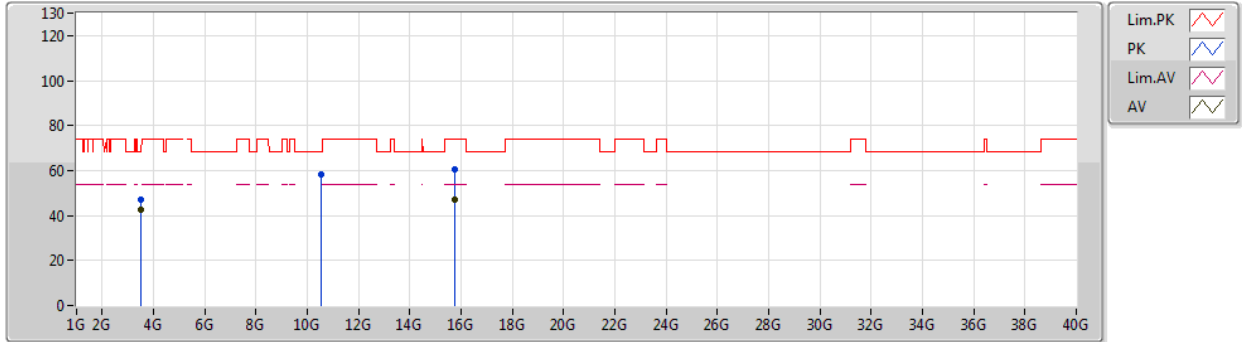
Type	Freq (Hz)	Level (dBuV/m)	Limit (dBuV/m)	Margin (dB)	Factor (dB)	Dist (m)	Condition	Azimuth (°)	Height (m)	Comment	Raw (dBuV)	AF (dB)	CL (dB)	PA (dB)
AV	3.50668G	41.12	54.00	-12.88	0.52	3	Vertical	55	1.49	-	40.60	28.83	5.83	34.14
AV	15.7722G	46.37	54.00	-7.63	18.36	3	Vertical	66	1.43	-	28.01	37.53	13.27	32.44
PK	3.50664G	45.86	74.00	-28.14	0.52	3	Vertical	55	1.49	-	45.34	28.83	5.83	34.14
PK	10.5167G	57.89	68.20	-10.31	16.39	3	Vertical	354	1.40	-	41.50	39.73	10.76	34.10
PK	15.77424G	59.22	74.00	-14.78	18.36	3	Vertical	66	1.43	-	40.86	37.53	13.27	32.44



802.11ax HEW20_Nss1,(MCS0)_1TX

28/12/2019

5260MHz_TX



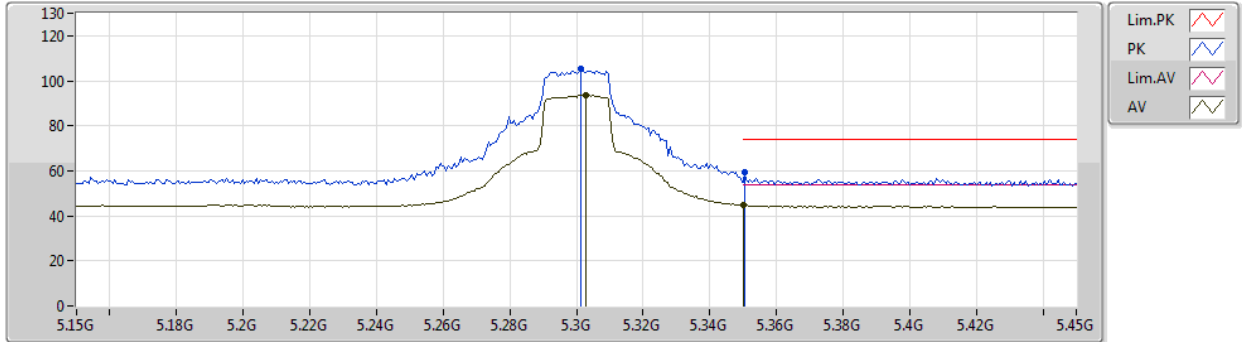
Type	Freq (Hz)	Level (dBuV/m)	Limit (dBuV/m)	Margin (dB)	Factor (dB)	Dist (m)	Condition	Azimuth (°)	Height (m)	Comment	Raw (dBuV)	AF (dB)	CL (dB)	PA (dB)
AV	3.50664G	42.66	54.00	-11.34	0.52	3	Horizontal	122	1.04	-	42.14	28.83	5.83	34.14
AV	15.77652G	46.85	54.00	-7.15	18.35	3	Horizontal	332	1.50	-	28.50	37.52	13.27	32.44
PK	3.50663G	46.87	74.00	-27.13	0.52	3	Horizontal	122	1.04	-	46.35	28.83	5.83	34.14
PK	10.5212G	58.08	68.20	-10.12	16.40	3	Horizontal	340	1.48	-	41.68	39.74	10.76	34.10
PK	15.77466G	60.57	74.00	-13.43	18.36	3	Horizontal	332	1.50	-	42.21	37.53	13.27	32.44



802.11ax HEW20_Nss1,(MCS0)_1TX

28/12/2019

5300MHz_TX



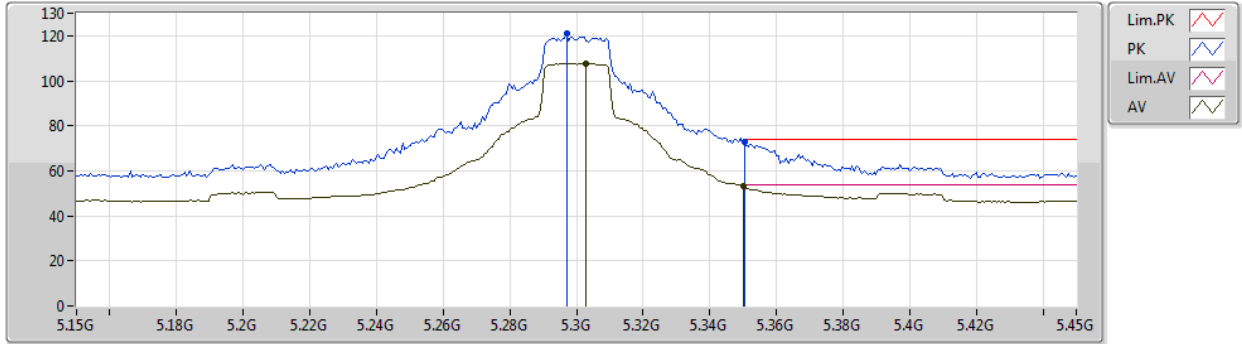
Type	Freq (Hz)	Level (dBuV/m)	Limit (dBuV/m)	Margin (dB)	Factor (dB)	Dist (m)	Condition	Azimuth (°)	Height (m)	Comment	Raw (dBuV)	AF (dB)	CL (dB)	PA (dB)
AV	5.303G	93.61	Inf	-Inf	4.91	3	Vertical	36	2.88	-	88.70	31.30	7.48	33.87
AV	5.35G	44.86	54.00	-9.14	4.93	3	Vertical	36	2.88	-	39.93	31.30	7.51	33.88
PK	5.3012G	105.60	Inf	-Inf	4.91	3	Vertical	36	2.88	-	100.69	31.30	7.48	33.87
PK	5.3504G	59.47	74.00	-14.53	4.93	3	Vertical	36	2.88	-	54.54	31.30	7.51	33.88



802.11ax HEW20_Nss1,(MCS0)_1TX

28/12/2019

5300MHz_TX



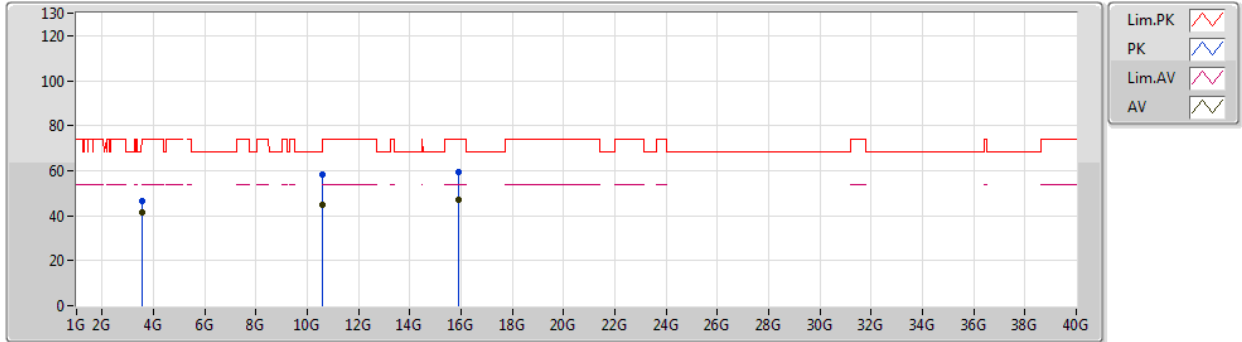
Type	Freq (Hz)	Level (dBuV/m)	Limit (dBuV/m)	Margin (dB)	Factor (dB)	Dist (m)	Condition	Azimuth (°)	Height (m)	Comment	Raw (dBuV)	AF (dB)	CL (dB)	PA (dB)
AV	5.303G	107.81	Inf	-Inf	4.91	3	Horizontal	357	1.50	-	102.90	31.30	7.48	33.87
AV	5.35G	53.03	54.00	-0.97	4.93	3	Horizontal	357	1.50	-	48.10	31.30	7.51	33.88
PK	5.297G	120.88	Inf	-Inf	4.91	3	Horizontal	357	1.50	-	115.97	31.31	7.47	33.87
PK	5.3504G	72.87	74.00	-1.13	4.93	3	Horizontal	357	1.50	-	67.94	31.30	7.51	33.88



802.11ax HEW20_Nss1,(MCS0)_1TX

28/12/2019

5300MHz_TX



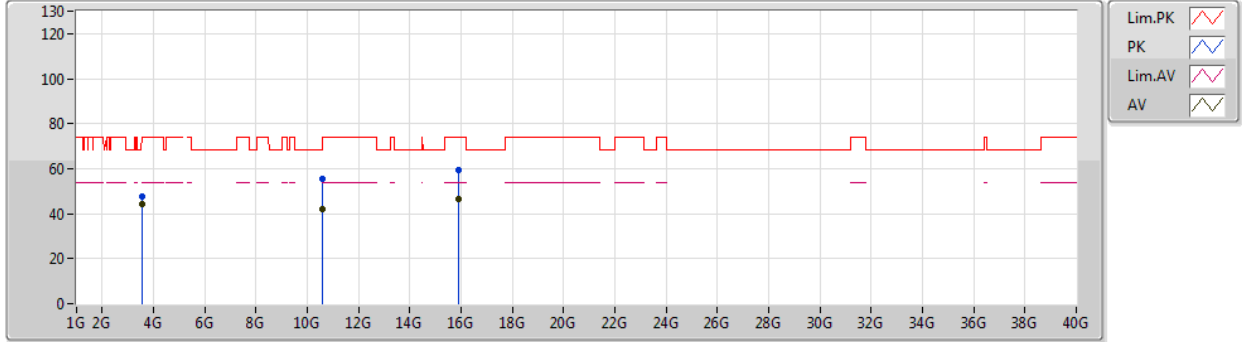
Type	Freq (Hz)	Level (dBuV/m)	Limit (dBuV/m)	Margin (dB)	Factor (dB)	Dist (m)	Condition	Azimuth (°)	Height (m)	Comment	Raw (dBuV)	AF (dB)	CL (dB)	PA (dB)
AV	3.53337G	41.19	54.00	-12.81	0.69	3	Vertical	58	1.58	-	40.50	28.93	5.89	34.13
AV	10.60006G	45.09	54.00	-8.91	16.67	3	Vertical	204	2.15	-	28.42	39.90	10.83	34.06
AV	15.89094G	46.83	54.00	-7.17	18.14	3	Vertical	250	2.07	-	28.69	37.32	13.33	32.51
PK	3.53319G	46.35	74.00	-27.65	0.69	3	Vertical	58	1.58	-	45.66	28.93	5.89	34.13
PK	10.60318G	58.00	74.00	-16.00	16.67	3	Vertical	204	2.15	-	41.33	39.90	10.83	34.06
PK	15.9084G	59.52	74.00	-14.48	18.10	3	Vertical	250	2.07	-	41.42	37.28	13.34	32.52



802.11ax HEW20_Nss1,(MCS0)_1TX

28/12/2019

5300MHz_TX



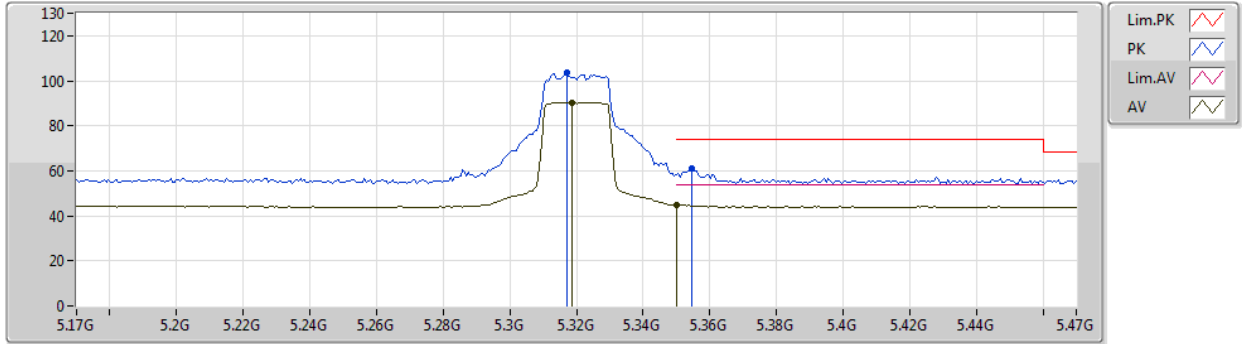
Type	Freq (Hz)	Level (dBuV/m)	Limit (dBuV/m)	Margin (dB)	Factor (dB)	Dist (m)	Condition	Azimuth (°)	Height (m)	Comment	Raw (dBuV)	AF (dB)	CL (dB)	PA (dB)
AV	3.53332G	44.11	54.00	-9.89	0.69	3	Horizontal	119	1.57	-	43.42	28.93	5.89	34.13
AV	10.60636G	41.78	54.00	-12.22	16.69	3	Horizontal	47	2.26	-	25.09	39.90	10.84	34.05
AV	15.89766G	46.74	54.00	-7.26	18.12	3	Horizontal	279	1.35	-	28.62	37.30	13.34	32.52
PK	3.53332G	47.72	74.00	-26.28	0.69	3	Horizontal	119	1.57	-	47.03	28.93	5.89	34.13
PK	10.59022G	55.54	68.20	-12.66	16.64	3	Horizontal	47	2.26	-	38.90	39.88	10.82	34.06
PK	15.9042G	59.45	74.00	-14.55	18.11	3	Horizontal	279	1.35	-	41.34	37.29	13.34	32.52



802.11ax HEW20_Nss1,(MCS0)_1TX

28/12/2019

5320MHz_TX



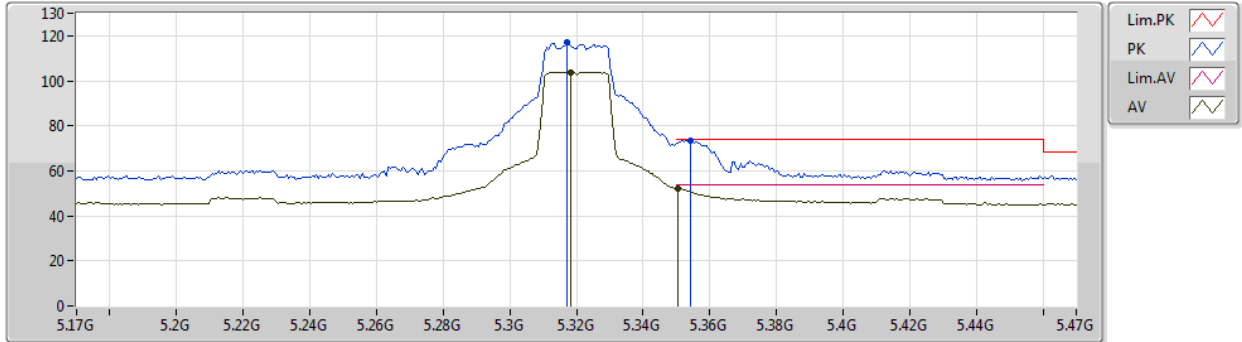
Type	Freq (Hz)	Level (dBuV/m)	Limit (dBuV/m)	Margin (dB)	Factor (dB)	Dist (m)	Condition	Azimuth (°)	Height (m)	Comment	Raw (dBuV)	AF (dB)	CL (dB)	PA (dB)
AV	5.3188G	90.37	Inf	-Inf	4.91	3	Vertical	27	2.87	-	85.46	31.30	7.49	33.88
AV	5.35G	45.02	54.00	-8.98	4.93	3	Vertical	27	2.87	-	40.09	31.30	7.51	33.88
PK	5.317G	103.58	Inf	-Inf	4.91	3	Vertical	27	2.87	-	98.67	31.30	7.49	33.88
PK	5.3548G	60.91	74.00	-13.09	4.95	3	Vertical	27	2.87	-	55.96	31.33	7.51	33.89



802.11ax HEW20_Nss1,(MCS0)_1TX

28/12/2019

5320MHz_TX



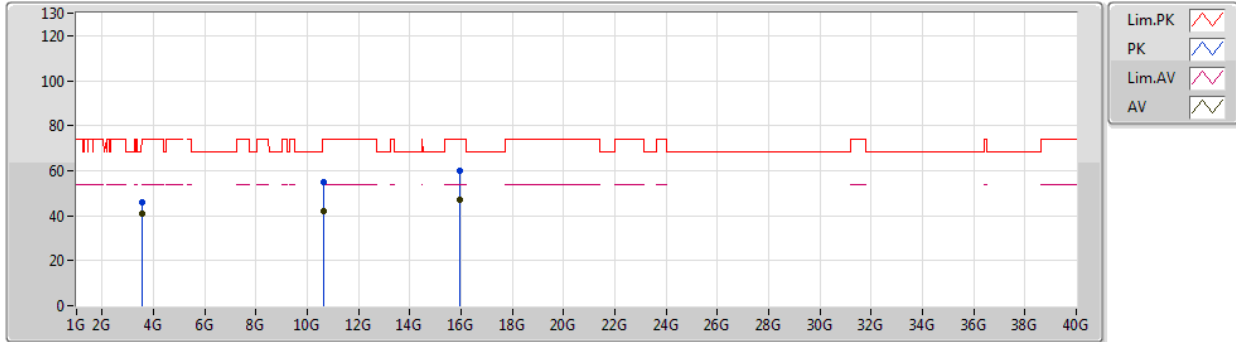
Type	Freq (Hz)	Level (dBuV/m)	Limit (dBuV/m)	Margin (dB)	Factor (dB)	Dist (m)	Condition	Azimuth (°)	Height (m)	Comment	Raw (dBuV)	AF (dB)	CL (dB)	PA (dB)
AV	5.3182G	103.88	Inf	-Inf	4.91	3	Horizontal	356	1.50	-	98.97	31.30	7.49	33.88
AV	5.3506G	52.19	54.00	-1.81	4.93	3	Horizontal	356	1.50	-	47.26	31.30	7.51	33.88
PK	5.317G	116.99	Inf	-Inf	4.91	3	Horizontal	356	1.50	-	112.08	31.30	7.49	33.88
PK	5.3542G	73.59	74.00	-0.41	4.95	3	Horizontal	356	1.50	-	68.64	31.33	7.51	33.89



802.11ax HEW20_Nss1,(MCS0)_1TX

28/12/2019

5320MHz_TX



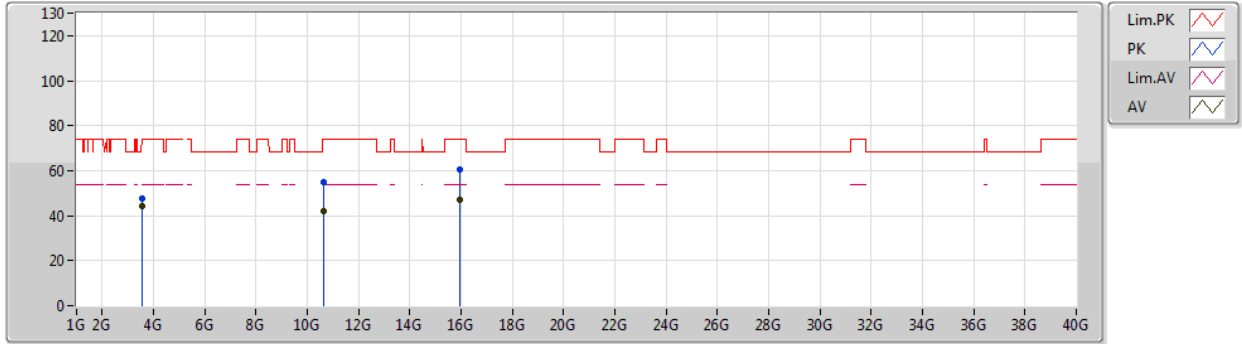
Type	Freq (Hz)	Level (dBuV/m)	Limit (dBuV/m)	Margin (dB)	Factor (dB)	Dist (m)	Condition	Azimuth (°)	Height (m)	Comment	Raw (dBuV)	AF (dB)	CL (dB)	PA (dB)
AV	3.54666G	40.83	54.00	-13.17	0.78	3	Vertical	22	1.48	-	40.05	28.99	5.92	34.13
AV	10.63442G	41.95	54.00	-12.05	16.72	3	Vertical	32	1.18	-	25.23	39.90	10.86	34.04
AV	15.96072G	46.99	54.00	-7.01	17.99	3	Vertical	234	1.73	-	29.00	37.18	13.37	32.56
PK	3.54671G	45.82	74.00	-28.18	0.78	3	Vertical	22	1.48	-	45.04	28.99	5.92	34.13
PK	10.6478G	54.97	74.00	-19.03	16.74	3	Vertical	32	1.18	-	38.23	39.90	10.87	34.03
PK	15.9714G	59.99	74.00	-14.01	17.98	3	Vertical	234	1.73	-	42.01	37.16	13.38	32.56



802.11ax HEW20_Nss1,(MCS0)_1TX

28/12/2019

5320MHz_TX



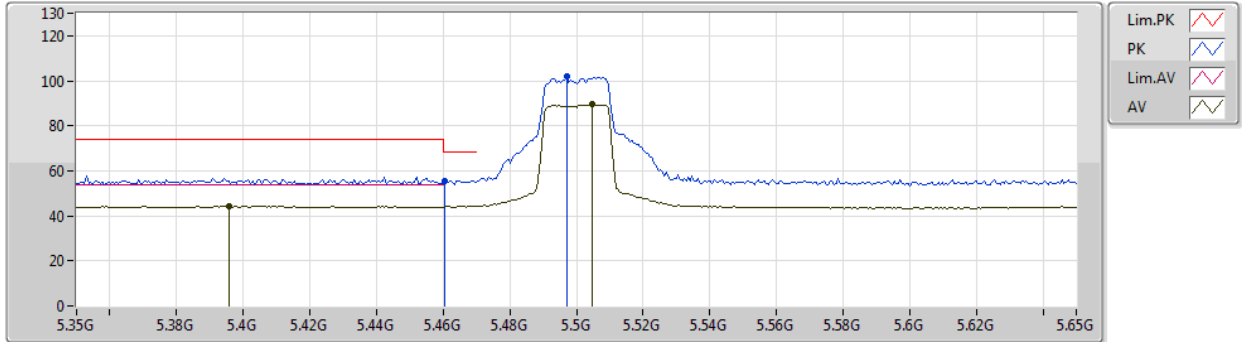
Type	Freq (Hz)	Level (dBuV/m)	Limit (dBuV/m)	Margin (dB)	Factor (dB)	Dist (m)	Condition	Azimuth (°)	Height (m)	Comment	Raw (dBuV)	AF (dB)	CL (dB)	PA (dB)
AV	3.54667G	44.16	54.00	-9.84	0.78	3	Horizontal	122	1.47	-	43.38	28.99	5.92	34.13
AV	10.65338G	41.82	54.00	-12.18	16.75	3	Horizontal	116	1.51	-	25.07	39.90	10.88	34.03
AV	15.97362G	46.96	54.00	-7.04	17.97	3	Horizontal	21	2.17	-	28.99	37.15	13.38	32.56
PK	3.54662G	47.48	74.00	-26.52	0.78	3	Horizontal	122	1.47	-	46.70	28.99	5.92	34.13
PK	10.6493G	54.97	74.00	-19.03	16.74	3	Horizontal	116	1.51	-	38.23	39.90	10.87	34.03
PK	15.9465G	60.26	74.00	-13.74	18.02	3	Horizontal	21	2.17	-	42.24	37.21	13.36	32.55



802.11ax HEW20_Nss1,(MCS0)_1TX

28/12/2019

5500MHz_TX



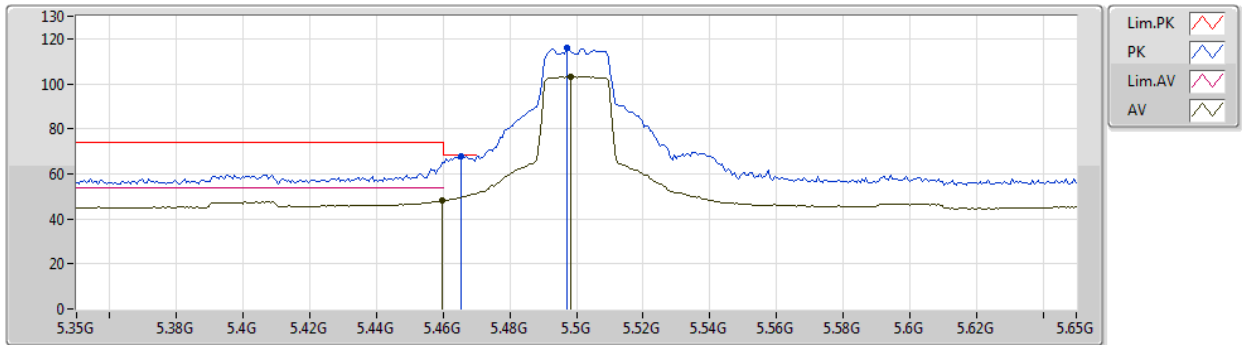
Type	Freq (Hz)	Level (dBuV/m)	Limit (dBuV/m)	Margin (dB)	Factor (dB)	Dist (m)	Condition	Azimuth (°)	Height (m)	Comment	Raw (dBuV)	AF (dB)	CL (dB)	PA (dB)
AV	5.3956G	44.32	54.00	-9.68	5.22	3	Vertical	31	2.94	-	39.10	31.57	7.54	33.89
AV	5.5048G	89.48	Inf	-Inf	5.29	3	Vertical	31	2.94	-	84.19	31.90	7.31	33.92
PK	5.4604G	55.73	68.20	-12.47	5.32	3	Vertical	31	2.94	-	50.41	31.82	7.41	33.91
PK	5.497G	101.86	Inf	-Inf	5.30	3	Vertical	31	2.94	-	96.56	31.89	7.33	33.92



802.11ax HEW20_Nss1,(MCS0)_1TX

28/12/2019

5500MHz_TX



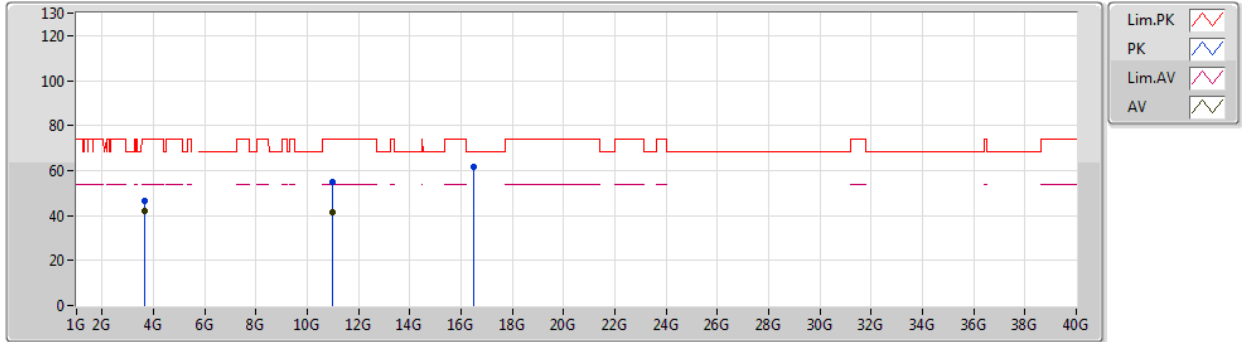
Type	Freq (Hz)	Level (dBuV/m)	Limit (dBuV/m)	Margin (dB)	Factor (dB)	Dist (m)	Condition	Azimuth (°)	Height (m)	Comment	Raw (dBuV)	AF (dB)	CL (dB)	PA (dB)
AV	5.4598G	47.99	54.00	-6.01	5.32	3	Horizontal	0	1.43	-	42.67	31.82	7.41	33.91
AV	5.4982G	103.17	Inf	-Inf	5.30	3	Horizontal	0	1.43	-	97.87	31.90	7.32	33.92
PK	5.4652G	68.02	68.20	-0.18	5.32	3	Horizontal	0	1.43	-	62.70	31.83	7.40	33.91
PK	5.497G	116.04	Inf	-Inf	5.30	3	Horizontal	0	1.43	-	110.74	31.89	7.33	33.92



802.11ax HEW20_Nss1,(MCS0)_1TX

28/12/2019

5500MHz_TX



Type	Freq (Hz)	Level (dBuV/m)	Limit (dBuV/m)	Margin (dB)	Factor (dB)	Dist (m)	Condition	Azimuth (°)	Height (m)	Comment	Raw (dBuV)	AF (dB)	CL (dB)	PA (dB)
AV	3.66669G	42.22	54.00	-11.78	1.26	3	Vertical	19	1.48	-	40.96	29.30	6.05	34.09
AV	11.005G	41.26	54.00	-12.74	17.53	3	Vertical	84	2.08	-	23.73	40.19	11.19	33.85
PK	3.66668G	46.30	74.00	-27.70	1.26	3	Vertical	19	1.48	-	45.04	29.30	6.05	34.09
PK	11.00196G	54.75	74.00	-19.25	17.53	3	Vertical	84	2.08	-	37.22	40.19	11.19	33.85
PK	16.4953G	61.63	68.20	-6.57	20.04	3	Vertical	359	2.50	-	41.59	38.49	13.74	32.19