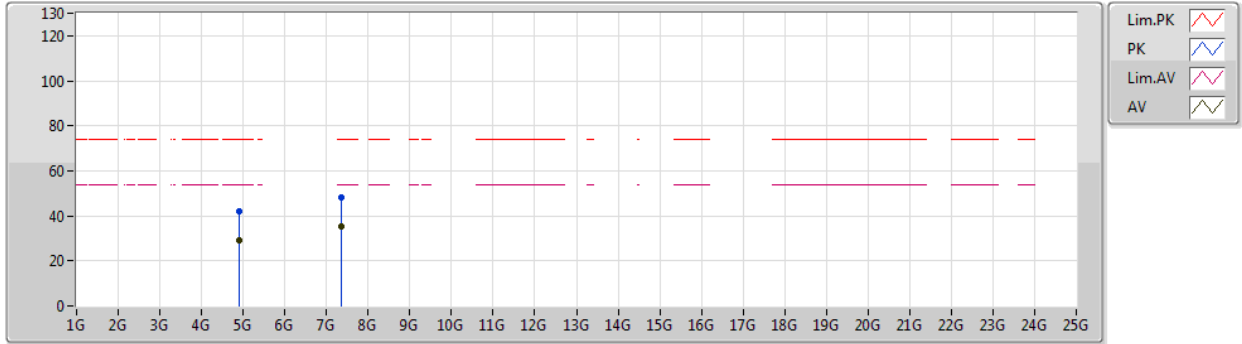




802.11ax HEW40-BF_Nss1,(MCS0)_2TX

23/11/2019

2452MHz_TX



Type	Freq (Hz)	Level (dBuV/m)	Limit (dBuV/m)	Margin (dB)	Factor (dB)	Dist (m)	Condition	Azimuth (°)	Height (m)	Comment	Raw (dBuV)	AF (dB)	CL (dB)	PA (dB)
AV	4.90014G	29.11	54.00	-24.89	4.48	3	Horizontal	185	1.58	-	24.63	31.52	6.82	33.86
AV	7.35242G	35.05	54.00	-18.95	10.64	3	Horizontal	262	2.32	-	24.41	36.12	8.63	34.11
PK	4.90722G	42.22	74.00	-31.78	4.49	3	Horizontal	185	1.58	-	37.73	31.53	6.82	33.86
PK	7.3604G	48.24	74.00	-25.76	10.67	3	Horizontal	262	2.32	-	37.57	36.14	8.64	34.11



Summary

Mode	Result	Type	Freq (Hz)	Level (dBuV/m)	Limit (dBuV/m)	Margin (dB)	Dist (m)	Condition	Azimuth (°)	Height (m)	Comments
2.4-2.4835GHz	-	-	-	-	-	-	-	-	-	-	-
802.11ax HEW40-BF_Nss1,(MCS0)_2TX	Pass	QP	249.22M	43.78	46.00	-2.22	3	Horizontal	56	1.29	-



Result

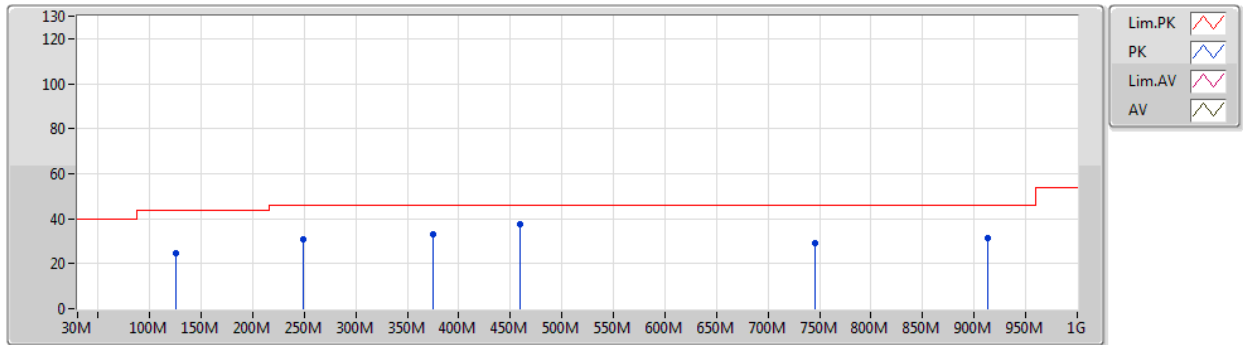
Mode	Result	Type	Freq (Hz)	Level (dBuV/m)	Limit (dBuV/m)	Margin (dB)	Dist (m)	Condition	Azimuth (°)	Height (m)	Comments
802.11ax HEW40-BF_Nss1,(MCS0)_2TX	-	-	-	-	-	-	-	-	-	-	-
2437MHz	Pass	PK	125.06M	24.81	43.50	-18.69	3	Vertical	360	1.00	-
2437MHz	Pass	PK	249.22M	30.65	46.00	-15.35	3	Vertical	360	1.00	-
2437MHz	Pass	PK	375.32M	33.29	46.00	-12.71	3	Vertical	360	1.00	-
2437MHz	Pass	PK	458.74M	37.41	46.00	-8.59	3	Vertical	360	1.00	-
2437MHz	Pass	PK	745.86M	29.09	46.00	-16.91	3	Vertical	360	1.00	-
2437MHz	Pass	PK	912.7M	31.45	46.00	-14.55	3	Vertical	360	1.00	-
2437MHz	Pass	PK	125.06M	34.74	43.50	-8.76	3	Horizontal	0	1.00	-
2437MHz	Pass	PK	458.74M	42.95	46.00	-3.05	3	Horizontal	0	1.00	-
2437MHz	Pass	PK	747.8M	36.18	46.00	-9.82	3	Horizontal	0	1.00	-
2437MHz	Pass	PK	875.84M	41.79	46.00	-4.21	3	Horizontal	0	1.00	-
2437MHz	Pass	OP	249.22M	43.78	46.00	-2.22	3	Horizontal	56	1.29	-
2437MHz	Pass	OP	375.32M	42.11	46.00	-3.89	3	Horizontal	177	1.00	-



802.11ax HEW40-BF_Nss1,(MCS0)_2TX

06/12/2019

2437MHz_PoE



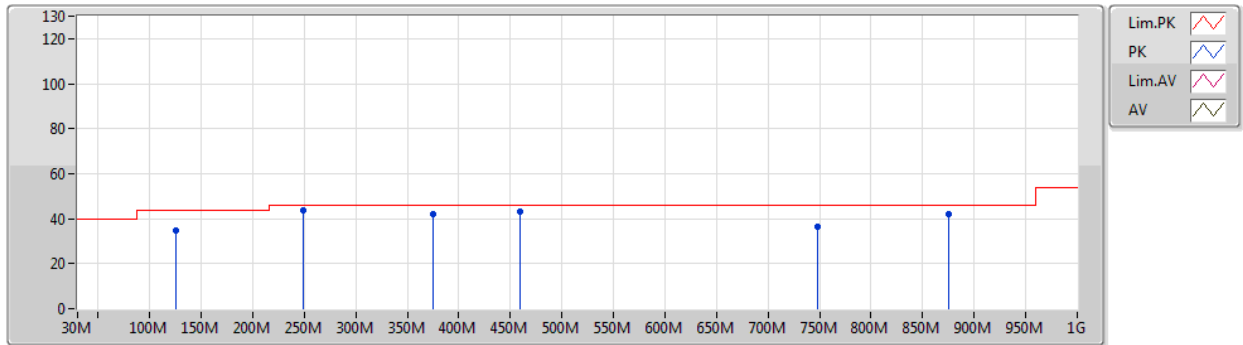
Type	Freq (Hz)	Level (dBuV/m)	Limit (dBuV/m)	Margin (dB)	Factor (dB)	Dist (m)	Condition	Azimuth (°)	Height (m)	Comment	Raw (dBuV)	AF (dB)	CL (dB)	PA (dB)
PK	125.06M	24.81	43.50	-18.69	-8.46	3	Vertical	360	1.00	-	33.27	17.11	1.72	27.29
PK	249.22M	30.65	46.00	-15.35	-6.86	3	Vertical	360	1.00	-	37.51	17.40	2.48	26.74
PK	375.32M	33.29	46.00	-12.71	-4.11	3	Vertical	360	1.00	-	37.40	19.95	3.08	27.14
PK	458.74M	37.41	46.00	-8.59	-2.15	3	Vertical	360	1.00	-	39.56	22.15	3.42	27.72
PK	745.86M	29.09	46.00	-16.91	1.24	3	Vertical	360	1.00	-	27.85	24.78	4.50	28.04
PK	912.7M	31.45	46.00	-14.55	3.13	3	Vertical	360	1.00	-	28.32	25.54	5.06	27.47



802.11ax HEW40-BF_Nss1,(MCS0)_2TX

06/12/2019

2437MHz_PoE



Type	Freq (Hz)	Level (dBuV/m)	Limit (dBuV/m)	Margin (dB)	Factor (dB)	Dist (m)	Condition	Azimuth (°)	Height (m)	Comment	Raw (dBuV)	AF (dB)	CL (dB)	PA (dB)
PK	125.06M	34.74	43.50	-8.76	-8.46	3	Horizontal	0	1.00	-	43.20	17.11	1.72	27.29
PK	458.74M	42.95	46.00	-3.05	-2.15	3	Horizontal	0	1.00	-	45.10	22.15	3.42	27.72
PK	747.8M	36.18	46.00	-9.82	1.24	3	Horizontal	0	1.00	-	34.94	24.78	4.50	28.04
PK	875.84M	41.79	46.00	-4.21	2.67	3	Horizontal	0	1.00	-	39.12	25.36	4.93	27.62
QP	249.22M	43.78	46.00	-2.22	-6.86	3	Horizontal	56	1.29	-	50.64	17.40	2.48	26.74
QP	375.32M	42.11	46.00	-3.89	-4.11	3	Horizontal	177	1.00	-	46.22	19.95	3.08	27.14



Summary

Mode	Result	Type	Freq (Hz)	Level (dBuV/m)	Limit (dBuV/m)	Margin (dB)	Dist (m)	Condition	Azimuth (°)	Height (m)	Comments
2.4-2.4835GHz	-	-	-	-	-	-	-	-	-	-	-
802.11ax HEW20-BF_Nss1,(MCS0)_2TX	Pass	PK	2.387G	73.86	74.00	-0.14	3	Vertical	0	1.55	-
802.11ax HEW40-BF_Nss1,(MCS0)_2TX	Pass	PK	2.4858G	73.90	74.00	-0.10	3	Horizontal	0	1.30	-



Result

Mode	Result	Type	Freq (Hz)	Level (dBuV/m)	Limit (dBuV/m)	Margin (dB)	Dist (m)	Condition	Azimuth (°)	Height (m)	Comments
802.11ax HEW20-BF_Nss1,(MCS0)_2TX	-	-	-	-	-	-	-	-	-	-	-
2412MHz	Pass	AV	2.39G	53.40	54.00	-0.60	3	Vertical	0	1.81	-
2412MHz	Pass	AV	2.4034G	103.64	Inf	-Inf	3	Vertical	0	1.81	-
2412MHz	Pass	PK	2.3882G	73.07	74.00	-0.93	3	Vertical	0	1.81	-
2412MHz	Pass	PK	2.403G	116.92	Inf	-Inf	3	Vertical	0	1.81	-
2412MHz	Pass	AV	2.3898G	53.68	54.00	-0.32	3	Horizontal	0	1.54	-
2412MHz	Pass	AV	2.4032G	104.67	Inf	-Inf	3	Horizontal	0	1.54	-
2412MHz	Pass	PK	2.3894G	72.68	74.00	-1.32	3	Horizontal	0	1.54	-
2412MHz	Pass	PK	2.4052G	118.18	Inf	-Inf	3	Horizontal	0	1.54	-
2412MHz	Pass	AV	3.61802G	46.96	54.00	-7.04	3	Vertical	182	1.85	-
2412MHz	Pass	AV	4.82544G	29.23	54.00	-24.77	3	Vertical	151	1.06	-
2412MHz	Pass	PK	3.61803G	49.44	74.00	-24.56	3	Vertical	182	1.85	-
2412MHz	Pass	PK	4.82754G	42.24	74.00	-31.76	3	Vertical	151	1.06	-
2412MHz	Pass	AV	3.61802G	49.00	54.00	-5.00	3	Horizontal	162	2.06	-
2412MHz	Pass	AV	4.82728G	29.24	54.00	-24.76	3	Horizontal	38	1.56	-
2412MHz	Pass	PK	3.61804G	50.95	74.00	-23.05	3	Horizontal	162	2.06	-
2412MHz	Pass	PK	4.82488G	42.51	74.00	-31.49	3	Horizontal	38	1.56	-
2417MHz	Pass	AV	2.385G	51.93	54.00	-2.07	3	Vertical	0	1.55	-
2417MHz	Pass	AV	2.4238G	106.85	Inf	-Inf	3	Vertical	0	1.55	-
2417MHz	Pass	PK	2.387G	73.86	74.00	-0.14	3	Vertical	0	1.55	-
2417MHz	Pass	PK	2.4254G	120.06	Inf	-Inf	3	Vertical	0	1.55	-
2417MHz	Pass	AV	2.3856G	51.31	54.00	-2.69	3	Horizontal	354	1.48	-
2417MHz	Pass	AV	2.411G	106.70	Inf	-Inf	3	Horizontal	354	1.48	-
2417MHz	Pass	PK	2.3882G	71.89	74.00	-2.11	3	Horizontal	354	1.48	-
2417MHz	Pass	PK	2.408G	119.03	Inf	-Inf	3	Horizontal	354	1.48	-
2437MHz	Pass	AV	2.3886G	53.76	54.00	-0.24	3	Vertical	6	1.48	-
2437MHz	Pass	AV	2.429G	107.43	Inf	-Inf	3	Vertical	6	1.48	-
2437MHz	Pass	AV	2.4835G	51.97	54.00	-2.03	3	Vertical	6	1.48	-
2437MHz	Pass	PK	2.387G	71.08	74.00	-2.92	3	Vertical	6	1.48	-
2437MHz	Pass	PK	2.4282G	120.45	Inf	-Inf	3	Vertical	6	1.48	-
2437MHz	Pass	PK	2.4846G	71.41	74.00	-2.59	3	Vertical	6	1.48	-
2437MHz	Pass	AV	2.3894G	51.97	54.00	-2.03	3	Horizontal	0	1.48	-
2437MHz	Pass	AV	2.4386G	109.58	Inf	-Inf	3	Horizontal	0	1.48	-
2437MHz	Pass	AV	2.4842G	52.76	54.00	-1.24	3	Horizontal	0	1.48	-
2437MHz	Pass	PK	2.3886G	69.00	74.00	-5.00	3	Horizontal	0	1.48	-
2437MHz	Pass	PK	2.4418G	122.16	Inf	-Inf	3	Horizontal	0	1.48	-
2437MHz	Pass	PK	2.4835G	71.85	74.00	-2.15	3	Horizontal	0	1.48	-
2437MHz	Pass	AV	3.65553G	46.36	54.00	-7.64	3	Vertical	240	1.50	-
2437MHz	Pass	AV	4.87708G	30.02	54.00	-23.98	3	Vertical	182	2.34	-
2437MHz	Pass	AV	7.31136G	39.03	54.00	-14.97	3	Vertical	47	1.43	-
2437MHz	Pass	PK	3.65555G	49.19	74.00	-24.81	3	Vertical	240	1.50	-
2437MHz	Pass	PK	4.87734G	43.02	74.00	-30.98	3	Vertical	182	2.34	-
2437MHz	Pass	PK	7.30774G	50.00	74.00	-24.00	3	Vertical	47	1.43	-
2437MHz	Pass	AV	3.65552G	50.05	54.00	-3.95	3	Horizontal	205	1.73	-
2437MHz	Pass	AV	4.87252G	29.38	54.00	-24.62	3	Horizontal	28	2.47	-
2437MHz	Pass	AV	7.3105G	40.60	54.00	-13.40	3	Horizontal	126	1.46	-
2437MHz	Pass	PK	3.65556G	51.77	74.00	-22.23	3	Horizontal	205	1.73	-
2437MHz	Pass	PK	4.8767G	42.68	74.00	-31.32	3	Horizontal	28	2.47	-



**RSE TX above 1GHz_Beamforming_Sample 2_Radio 1_
Panel 2_2T1S**

Appendix F.24

Mode	Result	Type	Freq (Hz)	Level (dBuV/m)	Limit (dBuV/m)	Margin (dB)	Dist (m)	Condition	Azimuth (°)	Height (m)	Comments
2437MHz	Pass	PK	7.31426G	49.63	74.00	-24.37	3	Horizontal	126	1.46	-
2457MHz	Pass	AV	2.461G	105.58	Inf	-Inf	3	Vertical	359	1.67	-
2457MHz	Pass	AV	2.4838G	48.28	54.00	-5.72	3	Vertical	359	1.67	-
2457MHz	Pass	PK	2.4654G	118.07	Inf	-Inf	3	Vertical	359	1.67	-
2457MHz	Pass	PK	2.4838G	65.74	74.00	-8.26	3	Vertical	359	1.67	-
2457MHz	Pass	AV	2.4626G	103.40	Inf	-Inf	3	Horizontal	351	1.19	-
2457MHz	Pass	AV	2.4835G	50.42	54.00	-3.58	3	Horizontal	351	1.19	-
2457MHz	Pass	PK	2.4654G	116.56	Inf	-Inf	3	Horizontal	351	1.19	-
2457MHz	Pass	PK	2.4838G	73.54	74.00	-0.46	3	Horizontal	351	1.19	-
2462MHz	Pass	AV	2.4674G	104.88	Inf	-Inf	3	Vertical	3	1.47	-
2462MHz	Pass	AV	2.4836G	48.28	54.00	-5.72	3	Vertical	3	1.47	-
2462MHz	Pass	PK	2.4706G	117.99	Inf	-Inf	3	Vertical	3	1.47	-
2462MHz	Pass	PK	2.4835G	72.61	74.00	-1.39	3	Vertical	3	1.47	-
2462MHz	Pass	AV	2.4654G	102.63	Inf	-Inf	3	Horizontal	360	1.17	-
2462MHz	Pass	AV	2.4835G	49.13	54.00	-4.87	3	Horizontal	360	1.17	-
2462MHz	Pass	PK	2.4642G	115.33	Inf	-Inf	3	Horizontal	360	1.17	-
2462MHz	Pass	PK	2.4846G	73.81	74.00	-0.19	3	Horizontal	360	1.17	-
2462MHz	Pass	AV	4.91926G	29.37	54.00	-24.63	3	Vertical	290	2.15	-
2462MHz	Pass	AV	7.3882G	35.43	54.00	-18.57	3	Vertical	244	2.04	-
2462MHz	Pass	PK	4.92806G	42.73	74.00	-31.27	3	Vertical	290	2.15	-
2462MHz	Pass	PK	7.38838G	48.73	74.00	-25.27	3	Vertical	244	2.04	-
2462MHz	Pass	AV	4.91904G	29.31	54.00	-24.69	3	Horizontal	197	2.20	-
2462MHz	Pass	AV	7.38626G	35.57	54.00	-18.43	3	Horizontal	23	1.27	-
2462MHz	Pass	PK	4.92632G	42.62	74.00	-31.38	3	Horizontal	197	2.20	-
2462MHz	Pass	PK	7.38794G	48.55	74.00	-25.45	3	Horizontal	23	1.27	-
802.11ax HEW40-BF_Nss1 (MCS0)_2TX	-	-	-	-	-	-	-	-	-	-	-
2422MHz	Pass	AV	2.3896G	53.54	54.00	-0.46	3	Vertical	6	1.49	-
2422MHz	Pass	AV	2.4048G	99.19	Inf	-Inf	3	Vertical	6	1.49	-
2422MHz	Pass	AV	2.4835G	46.45	54.00	-7.55	3	Vertical	6	1.49	-
2422MHz	Pass	PK	2.3868G	70.55	74.00	-3.45	3	Vertical	6	1.49	-
2422MHz	Pass	PK	2.4184G	111.47	Inf	-Inf	3	Vertical	6	1.49	-
2422MHz	Pass	PK	2.4835G	59.07	74.00	-14.93	3	Vertical	6	1.49	-
2422MHz	Pass	AV	2.3896G	51.73	54.00	-2.27	3	Horizontal	0	1.35	-
2422MHz	Pass	AV	2.4244G	102.28	Inf	-Inf	3	Horizontal	0	1.35	-
2422MHz	Pass	AV	2.4835G	47.03	54.00	-6.97	3	Horizontal	0	1.35	-
2422MHz	Pass	PK	2.3888G	69.83	74.00	-4.17	3	Horizontal	0	1.35	-
2422MHz	Pass	PK	2.4264G	114.37	Inf	-Inf	3	Horizontal	0	1.35	-
2422MHz	Pass	PK	2.484G	60.40	74.00	-13.60	3	Horizontal	0	1.35	-
2422MHz	Pass	AV	3.633G	48.19	54.00	-5.81	3	Vertical	221	1.26	-
2422MHz	Pass	AV	4.8453G	29.28	54.00	-24.72	3	Vertical	4	2.25	-
2422MHz	Pass	AV	7.26148G	34.91	54.00	-19.09	3	Vertical	256	2.38	-
2422MHz	Pass	PK	3.63305G	50.81	74.00	-23.19	3	Vertical	221	1.26	-
2422MHz	Pass	PK	4.8429G	42.69	74.00	-31.31	3	Vertical	4	2.25	-
2422MHz	Pass	PK	7.26104G	47.72	74.00	-26.28	3	Vertical	256	2.38	-
2422MHz	Pass	AV	3.63304G	49.78	54.00	-4.22	3	Horizontal	206	1.56	-
2422MHz	Pass	AV	4.84236G	29.20	54.00	-24.80	3	Horizontal	230	2.22	-
2422MHz	Pass	AV	7.26122G	35.05	54.00	-18.95	3	Horizontal	77	1.35	-
2422MHz	Pass	PK	3.633G	51.67	74.00	-22.33	3	Horizontal	206	1.56	-
2422MHz	Pass	PK	4.84504G	42.78	74.00	-31.22	3	Horizontal	230	2.22	-



**RSE TX above 1GHz_Beamforming_Sample 2_Radio 1_
Panel 2_2T1S**

Appendix F.24

Mode	Result	Type	Freq (Hz)	Level (dBuV/m)	Limit (dBuV/m)	Margin (dB)	Dist (m)	Condition	Azimuth (°)	Height (m)	Comments
2422MHz	Pass	PK	7.26534G	47.91	74.00	-26.09	3	Horizontal	77	1.35	-
2427MHz	Pass	AV	2.3854G	53.74	54.00	-0.26	3	Vertical	0	2.20	-
2427MHz	Pass	AV	2.409G	101.08	Inf	-Inf	3	Vertical	0	2.20	-
2427MHz	Pass	AV	2.4898G	47.27	54.00	-6.73	3	Vertical	0	2.20	-
2427MHz	Pass	PK	2.3798G	71.36	74.00	-2.64	3	Vertical	0	2.20	-
2427MHz	Pass	PK	2.4114G	113.70	Inf	-Inf	3	Vertical	0	2.20	-
2427MHz	Pass	PK	2.4898G	63.41	74.00	-10.59	3	Vertical	0	2.20	-
2427MHz	Pass	AV	2.3814G	51.23	54.00	-2.77	3	Horizontal	0	1.63	-
2427MHz	Pass	AV	2.4262G	101.75	Inf	-Inf	3	Horizontal	0	1.63	-
2427MHz	Pass	AV	2.4835G	48.26	54.00	-5.74	3	Horizontal	0	1.63	-
2427MHz	Pass	PK	2.3874G	65.79	74.00	-8.21	3	Horizontal	0	1.63	-
2427MHz	Pass	PK	2.4234G	114.63	Inf	-Inf	3	Horizontal	0	1.63	-
2427MHz	Pass	PK	2.4878G	61.48	74.00	-12.52	3	Horizontal	0	1.63	-
2437MHz	Pass	AV	2.389G	51.90	54.00	-2.10	3	Vertical	0	1.94	-
2437MHz	Pass	AV	2.4406G	103.10	Inf	-Inf	3	Vertical	0	1.94	-
2437MHz	Pass	AV	2.4835G	51.52	54.00	-2.48	3	Vertical	0	1.94	-
2437MHz	Pass	PK	2.3898G	70.18	74.00	-3.82	3	Vertical	0	1.94	-
2437MHz	Pass	PK	2.4522G	115.49	Inf	-Inf	3	Vertical	0	1.94	-
2437MHz	Pass	PK	2.4835G	70.48	74.00	-3.52	3	Vertical	0	1.94	-
2437MHz	Pass	AV	2.3894G	52.13	54.00	-1.87	3	Horizontal	0	1.30	-
2437MHz	Pass	AV	2.423G	103.53	Inf	-Inf	3	Horizontal	0	1.30	-
2437MHz	Pass	AV	2.4842G	51.52	54.00	-2.48	3	Horizontal	0	1.30	-
2437MHz	Pass	PK	2.3894G	70.63	74.00	-3.37	3	Horizontal	0	1.30	-
2437MHz	Pass	PK	2.4326G	115.89	Inf	-Inf	3	Horizontal	0	1.30	-
2437MHz	Pass	PK	2.4858G	73.90	74.00	-0.10	3	Horizontal	0	1.30	-
2437MHz	Pass	AV	3.65555G	46.88	54.00	-7.12	3	Vertical	242	2.44	-
2437MHz	Pass	AV	4.87524G	29.43	54.00	-24.57	3	Vertical	28	1.73	-
2437MHz	Pass	AV	7.31288G	35.34	54.00	-18.66	3	Vertical	337	2.07	-
2437MHz	Pass	PK	3.65549G	49.46	74.00	-24.54	3	Vertical	242	2.44	-
2437MHz	Pass	PK	4.87408G	45.67	74.00	-28.33	3	Vertical	28	1.73	-
2437MHz	Pass	PK	7.30928G	48.72	74.00	-25.28	3	Vertical	337	2.07	-
2437MHz	Pass	AV	3.65552G	50.09	54.00	-3.91	3	Horizontal	205	1.74	-
2437MHz	Pass	AV	4.87678G	29.41	54.00	-24.59	3	Horizontal	120	1.44	-
2437MHz	Pass	AV	7.3148G	35.22	54.00	-18.78	3	Horizontal	270	1.96	-
2437MHz	Pass	PK	3.65558G	51.88	74.00	-22.12	3	Horizontal	205	1.74	-
2437MHz	Pass	PK	4.8701G	43.20	74.00	-30.80	3	Horizontal	120	1.44	-
2437MHz	Pass	PK	7.31224G	48.54	74.00	-25.46	3	Horizontal	270	1.96	-
2447MHz	Pass	AV	2.3898G	48.46	54.00	-5.54	3	Vertical	359	1.49	-
2447MHz	Pass	AV	2.4634G	101.58	Inf	-Inf	3	Vertical	359	1.49	-
2447MHz	Pass	AV	2.4894G	51.49	54.00	-2.51	3	Vertical	359	1.49	-
2447MHz	Pass	PK	2.381G	61.68	74.00	-12.32	3	Vertical	359	1.49	-
2447MHz	Pass	PK	2.4602G	113.48	Inf	-Inf	3	Vertical	359	1.49	-
2447MHz	Pass	PK	2.4946G	66.39	74.00	-7.61	3	Vertical	359	1.49	-
2447MHz	Pass	AV	2.3858G	48.96	54.00	-5.04	3	Horizontal	6	1.48	-
2447MHz	Pass	AV	2.4298G	103.69	Inf	-Inf	3	Horizontal	6	1.48	-
2447MHz	Pass	AV	2.4838G	53.35	54.00	-0.65	3	Horizontal	6	1.48	-
2447MHz	Pass	PK	2.3802G	61.52	74.00	-12.48	3	Horizontal	6	1.48	-
2447MHz	Pass	PK	2.4334G	114.84	Inf	-Inf	3	Horizontal	6	1.48	-
2447MHz	Pass	PK	2.4886G	69.54	74.00	-4.46	3	Horizontal	6	1.48	-



**RSE TX above 1GHz_Beamforming_Sample 2_Radio 1_
Panel 2_2T1S**

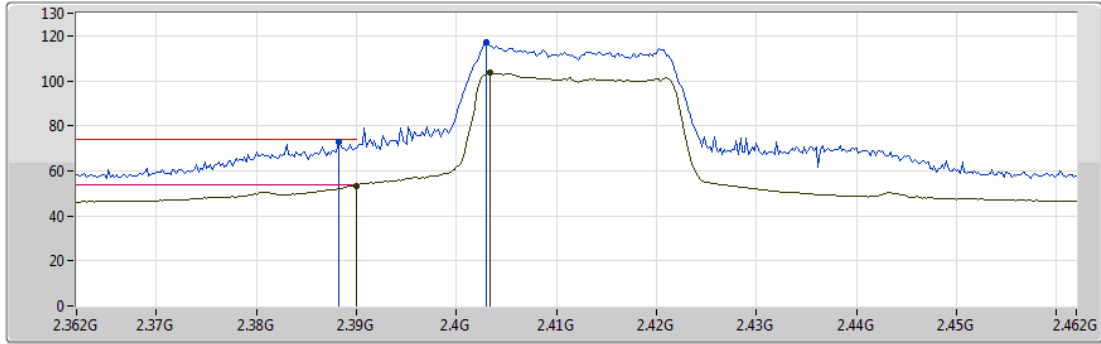
Appendix F.24

Mode	Result	Type	Freq (Hz)	Level (dBuV/m)	Limit (dBuV/m)	Margin (dB)	Dist (m)	Condition	Azimuth (°)	Height (m)	Comments
2452MHz	Pass	AV	2.39G	47.89	54.00	-6.11	3	Vertical	3	1.49	-
2452MHz	Pass	AV	2.4668G	102.18	Inf	-Inf	3	Vertical	3	1.49	-
2452MHz	Pass	AV	2.4928G	51.85	54.00	-2.15	3	Vertical	3	1.49	-
2452MHz	Pass	PK	2.3892G	60.47	74.00	-13.53	3	Vertical	3	1.49	-
2452MHz	Pass	PK	2.464G	114.34	Inf	-Inf	3	Vertical	3	1.49	-
2452MHz	Pass	PK	2.4872G	66.54	74.00	-7.46	3	Vertical	3	1.49	-
2452MHz	Pass	AV	2.3896G	48.08	54.00	-5.92	3	Horizontal	2	1.38	-
2452MHz	Pass	AV	2.434G	102.29	Inf	-Inf	3	Horizontal	2	1.38	-
2452MHz	Pass	AV	2.4848G	53.38	54.00	-0.62	3	Horizontal	2	1.38	-
2452MHz	Pass	PK	2.3892G	60.83	74.00	-13.17	3	Horizontal	2	1.38	-
2452MHz	Pass	PK	2.4364G	113.83	Inf	-Inf	3	Horizontal	2	1.38	-
2452MHz	Pass	PK	2.4848G	68.34	74.00	-5.66	3	Horizontal	2	1.38	-
2452MHz	Pass	AV	4.9021G	29.37	54.00	-24.63	3	Vertical	21	2.43	-
2452MHz	Pass	AV	7.35906G	35.14	54.00	-18.86	3	Vertical	127	2.11	-
2452MHz	Pass	PK	4.9068G	42.76	74.00	-31.24	3	Vertical	21	2.43	-
2452MHz	Pass	PK	7.35336G	49.02	74.00	-24.98	3	Vertical	127	2.11	-
2452MHz	Pass	AV	4.9042G	29.41	54.00	-24.59	3	Horizontal	341	2.04	-
2452MHz	Pass	AV	7.3606G	35.26	54.00	-18.74	3	Horizontal	321	1.43	-
2452MHz	Pass	PK	4.904G	42.63	74.00	-31.37	3	Horizontal	341	2.04	-
2452MHz	Pass	PK	7.35738G	48.37	74.00	-25.63	3	Horizontal	321	1.43	-



802.11ax HEW20-BF_Nss1,(MCS0)_2TX
2412MHz_TX

23/11/2019



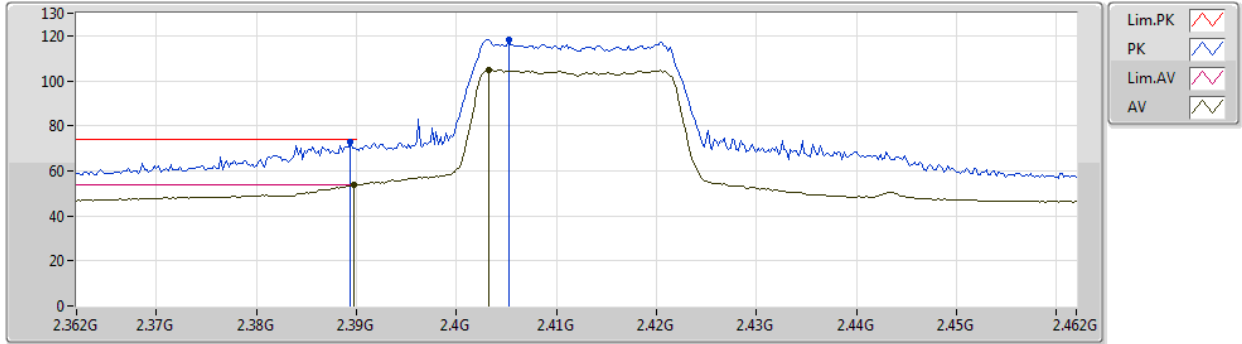
Type	Freq (Hz)	Level (dBuV/m)	Limit (dBuV/m)	Margin (dB)	Factor (dB)	Dist (m)	Condition	Azimuth (°)	Height (m)	Comment	Raw (dBuV)	AF (dB)	CL (dB)	PA (dB)
AV	2.39G	53.40	54.00	-0.60	32.09	3	Vertical	0	1.81	-	21.31	27.37	4.72	-
AV	2.4034G	103.64	Inf	-Inf	32.14	3	Vertical	0	1.81	-	71.50	27.41	4.73	-
PK	2.3882G	73.07	74.00	-0.93	32.08	3	Vertical	0	1.81	-	40.99	27.36	4.72	-
PK	2.403G	116.92	Inf	-Inf	32.14	3	Vertical	0	1.81	-	84.78	27.41	4.73	-



802.11ax HEW20-BF_Nss1,(MCS0)_2TX

23/11/2019

2412MHz_TX



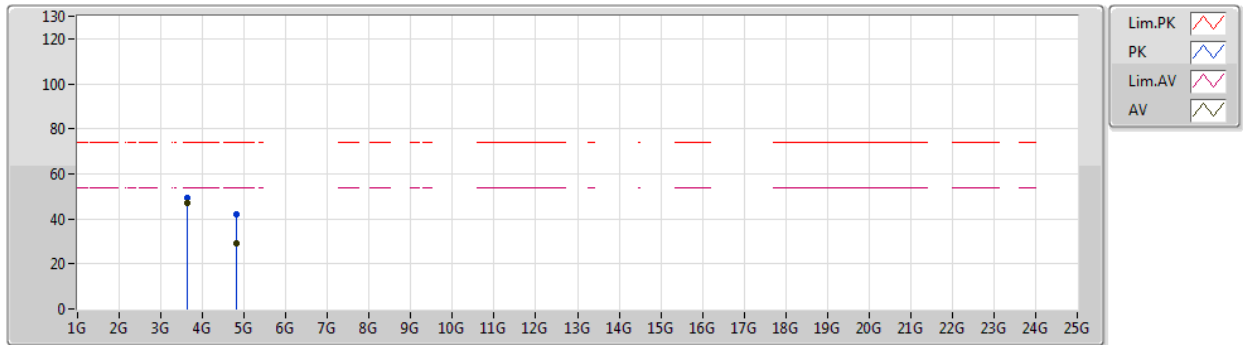
Type	Freq (Hz)	Level (dBuV/m)	Limit (dBuV/m)	Margin (dB)	Factor (dB)	Dist (m)	Condition	Azimuth (°)	Height (m)	Comment	Raw (dBuV)	AF (dB)	CL (dB)	PA (dB)
AV	2.3898G	53.68	54.00	-0.32	32.09	3	Horizontal	0	1.54	-	21.59	27.37	4.72	-
AV	2.4032G	104.67	Inf	-Inf	32.14	3	Horizontal	0	1.54	-	72.53	27.41	4.73	-
PK	2.3894G	72.68	74.00	-1.32	32.09	3	Horizontal	0	1.54	-	40.59	27.37	4.72	-
PK	2.4052G	118.18	Inf	-Inf	32.16	3	Horizontal	0	1.54	-	86.02	27.42	4.74	-



802.11ax HEW20-BF_Nss1,(MCS0)_2TX

23/11/2019

2412MHz_TX



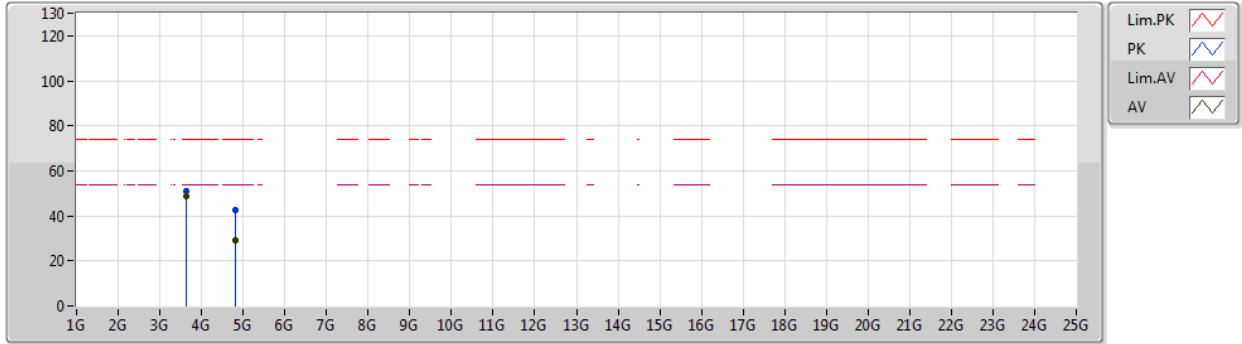
Type	Freq (Hz)	Level (dBuV/m)	Limit (dBuV/m)	Margin (dB)	Factor (dB)	Dist (m)	Condition	Azimuth (°)	Height (m)	Comment	Raw (dBuV)	AF (dB)	CL (dB)	PA (dB)
AV	3.61802G	46.96	54.00	-7.04	0.84	3	Vertical	182	1.85	-	46.12	29.01	5.93	34.10
AV	4.82544G	29.23	54.00	-24.77	4.28	3	Vertical	151	1.06	-	24.95	31.39	6.79	33.90
PK	3.61803G	49.44	74.00	-24.56	0.84	3	Vertical	182	1.85	-	48.60	29.01	5.93	34.10
PK	4.82754G	42.24	74.00	-31.76	4.28	3	Vertical	151	1.06	-	37.96	31.39	6.79	33.90



802.11ax HEW20-BF_Nss1,(MCS0)_2TX

23/11/2019

2412MHz_TX

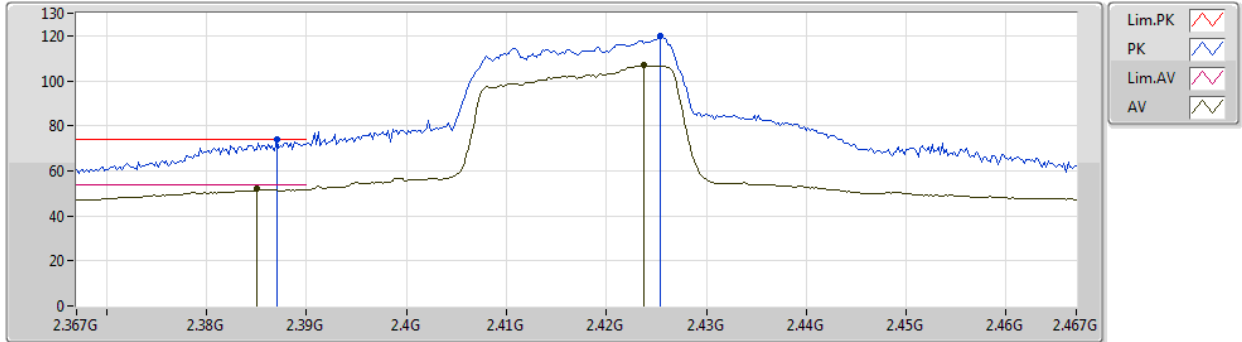


Type	Freq (Hz)	Level (dBuV/m)	Limit (dBuV/m)	Margin (dB)	Factor (dB)	Dist (m)	Condition	Azimuth (°)	Height (m)	Comment	Raw (dBuV)	AF (dB)	CL (dB)	PA (dB)
AV	3.61802G	49.00	54.00	-5.00	0.84	3	Horizontal	162	2.06	-	48.16	29.01	5.93	34.10
AV	4.82728G	29.24	54.00	-24.76	4.28	3	Horizontal	38	1.56	-	24.96	31.39	6.79	33.90
PK	3.61804G	50.95	74.00	-23.05	0.84	3	Horizontal	162	2.06	-	50.11	29.01	5.93	34.10
PK	4.82488G	42.51	74.00	-31.49	4.27	3	Horizontal	38	1.56	-	38.24	31.38	6.79	33.90



802.11ax HEW20-BF_Nss1,(MCS0)_2TX
2417MHz_TX

23/11/2019

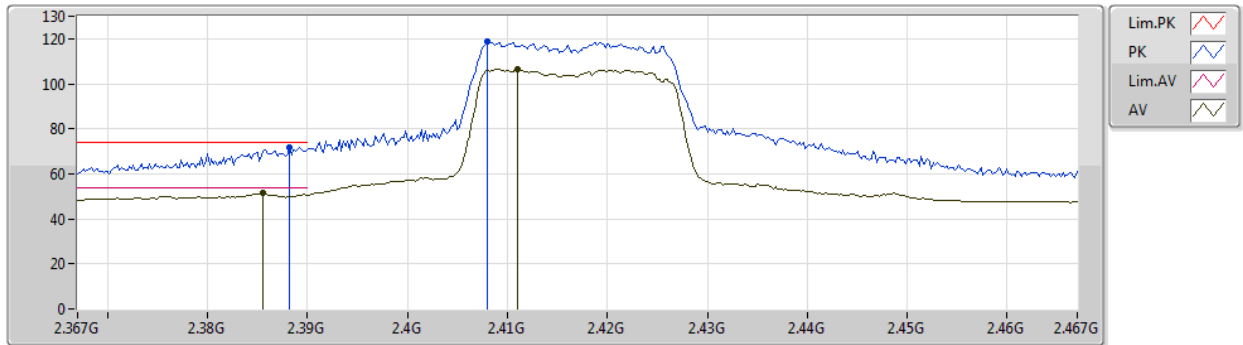


Type	Freq (Hz)	Level (dBuV/m)	Limit (dBuV/m)	Margin (dB)	Factor (dB)	Dist (m)	Condition	Azimuth (°)	Height (m)	Comment	Raw (dBuV)	AF (dB)	CL (dB)	PA (dB)
AV	2.385G	51.93	54.00	-2.07	32.07	3	Vertical	0	1.55	-	19.86	27.36	4.71	-
AV	2.4238G	106.85	Inf	-Inf	32.23	3	Vertical	0	1.55	-	74.62	27.47	4.76	-
PK	2.387G	73.86	74.00	-0.14	32.07	3	Vertical	0	1.55	-	41.79	27.36	4.71	-
PK	2.4254G	120.06	Inf	-Inf	32.24	3	Vertical	0	1.55	-	87.82	27.48	4.76	-



802.11ax HEW20-BF_Nss1,(MCS0)_2TX
2417MHz_TX

23/11/2019

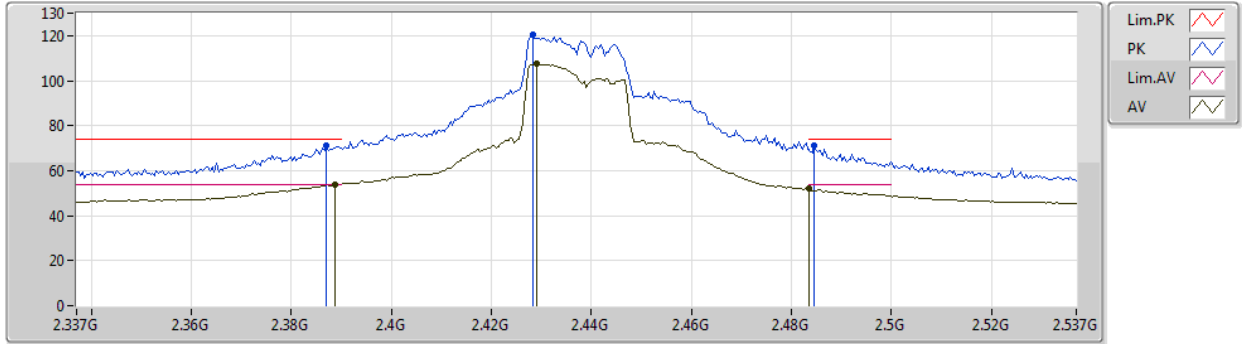


Type	Freq (Hz)	Level (dBuV/m)	Limit (dBuV/m)	Margin (dB)	Factor (dB)	Dist (m)	Condition	Azimuth (°)	Height (m)	Comment	Raw (dBuV)	AF (dB)	CL (dB)	PA (dB)
AV	2.3856G	51.31	54.00	-2.69	32.07	3	Horizontal	354	1.48	-	19.24	27.36	4.71	-
AV	2.411G	106.70	Inf	-Inf	32.17	3	Horizontal	354	1.48	-	74.53	27.43	4.74	-
PK	2.3882G	71.89	74.00	-2.11	32.08	3	Horizontal	354	1.48	-	39.81	27.36	4.72	-
PK	2.408G	119.03	Inf	-Inf	32.16	3	Horizontal	354	1.48	-	86.87	27.42	4.74	-



802.11ax HEW20-BF_Nss1,(MCS0)_2TX
2437MHz_TX

23/11/2019

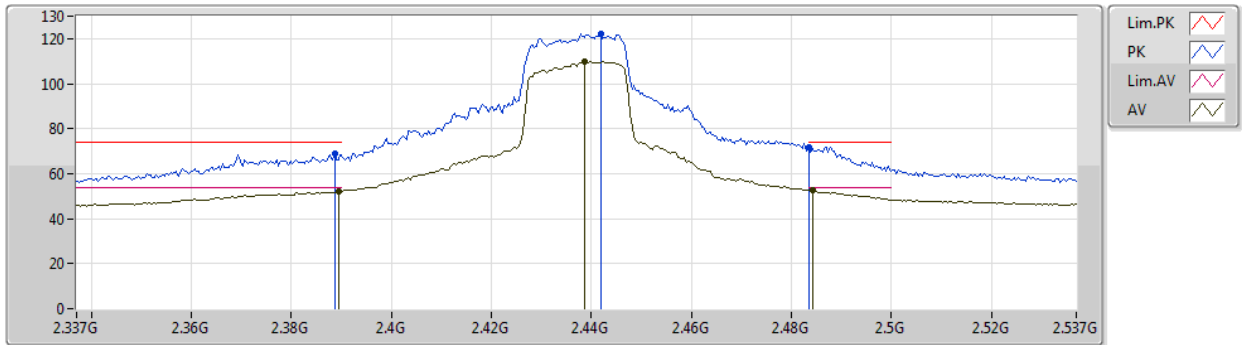


Type	Freq (Hz)	Level (dBuV/m)	Limit (dBuV/m)	Margin (dB)	Factor (dB)	Dist (m)	Condition	Azimuth (°)	Height (m)	Comment	Raw (dBuV)	AF (dB)	CL (dB)	PA (dB)
AV	2.3886G	53.76	54.00	-0.24	32.09	3	Vertical	6	1.48	-	21.67	27.37	4.72	-
AV	2.429G	107.43	Inf	-Inf	32.25	3	Vertical	6	1.48	-	75.18	27.49	4.76	-
AV	2.4835G	51.97	54.00	-2.03	32.48	3	Vertical	6	1.48	-	19.49	27.65	4.83	-
PK	2.387G	71.08	74.00	-2.92	32.07	3	Vertical	6	1.48	-	39.01	27.36	4.71	-
PK	2.4282G	120.45	Inf	-Inf	32.24	3	Vertical	6	1.48	-	88.21	27.48	4.76	-
PK	2.4846G	71.41	74.00	-2.59	32.48	3	Vertical	6	1.48	-	38.93	27.65	4.83	-



802.11ax HEW20-BF_Nss1,(MCS0)_2TX
2437MHz_TX

23/11/2019



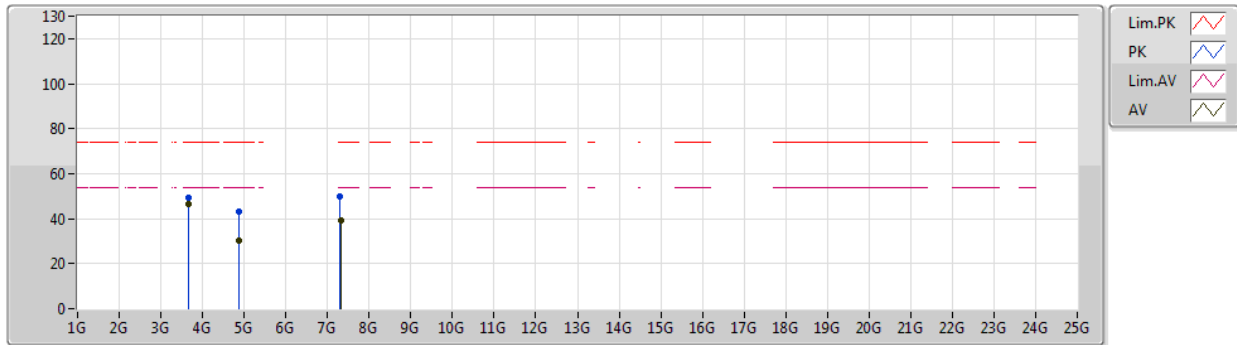
Type	Freq (Hz)	Level (dBuV/m)	Limit (dBuV/m)	Margin (dB)	Factor (dB)	Dist (m)	Condition	Azimuth (°)	Height (m)	Comment	Raw (dBuV)	AF (dB)	CL (dB)	PA (dB)
AV	2.3894G	51.97	54.00	-2.03	32.09	3	Horizontal	0	1.48	-	19.88	27.37	4.72	-
AV	2.4386G	109.58	Inf	-Inf	32.30	3	Horizontal	0	1.48	-	77.28	27.52	4.78	-
AV	2.4842G	52.76	54.00	-1.24	32.48	3	Horizontal	0	1.48	-	20.28	27.65	4.83	-
PK	2.3886G	69.00	74.00	-5.00	32.09	3	Horizontal	0	1.48	-	36.91	27.37	4.72	-
PK	2.4418G	122.16	Inf	-Inf	32.31	3	Horizontal	0	1.48	-	89.85	27.53	4.78	-
PK	2.4835G	71.85	74.00	-2.15	32.48	3	Horizontal	0	1.48	-	39.37	27.65	4.83	-



802.11ax HEW20-BF_Nss1,(MCS0)_2TX

23/11/2019

2437MHz_TX



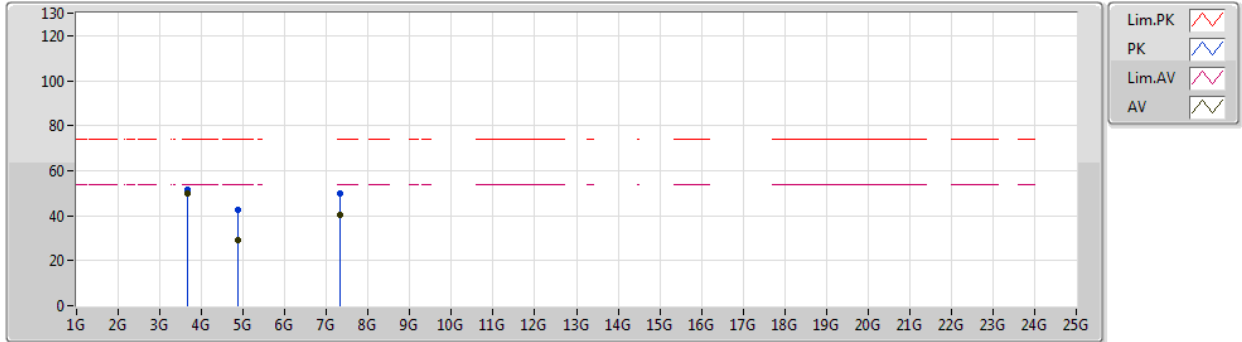
Type	Freq (Hz)	Level (dBuV/m)	Limit (dBuV/m)	Margin (dB)	Factor (dB)	Dist (m)	Condition	Azimuth (°)	Height (m)	Comment	Raw (dBuV)	AF (dB)	CL (dB)	PA (dB)
AV	3.65553G	46.36	54.00	-7.64	1.01	3	Vertical	240	1.50	-	45.35	29.08	6.02	34.09
AV	4.87708G	30.02	54.00	-23.98	4.42	3	Vertical	182	2.34	-	25.60	31.48	6.81	33.87
AV	7.31136G	39.03	54.00	-14.97	10.51	3	Vertical	47	1.43	-	28.52	36.01	8.61	34.11
PK	3.65555G	49.19	74.00	-24.81	1.01	3	Vertical	240	1.50	-	48.18	29.08	6.02	34.09
PK	4.87734G	43.02	74.00	-30.98	4.42	3	Vertical	182	2.34	-	38.60	31.48	6.81	33.87
PK	7.30774G	50.00	74.00	-24.00	10.50	3	Vertical	47	1.43	-	39.50	36.00	8.61	34.11



802.11ax HEW20-BF_Nss1,(MCS0)_2TX

23/11/2019

2437MHz_TX



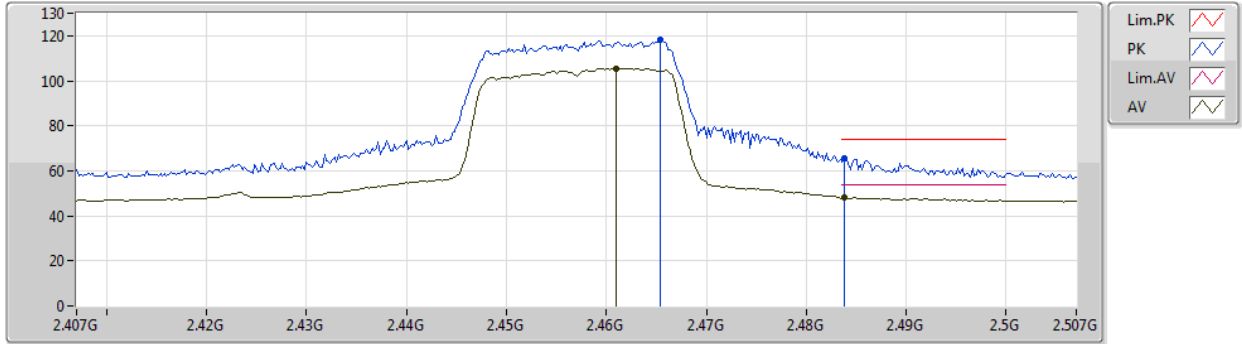
Type	Freq (Hz)	Level (dBuV/m)	Limit (dBuV/m)	Margin (dB)	Factor (dB)	Dist (m)	Condition	Azimuth (°)	Height (m)	Comment	Raw (dBuV)	AF (dB)	CL (dB)	PA (dB)
AV	3.65552G	50.05	54.00	-3.95	1.01	3	Horizontal	205	1.73	-	49.04	29.08	6.02	34.09
AV	4.87252G	29.38	54.00	-24.62	4.41	3	Horizontal	28	2.47	-	24.97	31.47	6.81	33.87
AV	7.3105G	40.60	54.00	-13.40	10.51	3	Horizontal	126	1.46	-	30.09	36.01	8.61	34.11
PK	3.65556G	51.77	74.00	-22.23	1.01	3	Horizontal	205	1.73	-	50.76	29.08	6.02	34.09
PK	4.8767G	42.68	74.00	-31.32	4.42	3	Horizontal	28	2.47	-	38.26	31.48	6.81	33.87
PK	7.31426G	49.63	74.00	-24.37	10.52	3	Horizontal	126	1.46	-	39.11	36.02	8.61	34.11



802.11ax HEW20-BF_Nss1,(MCS0)_2TX

23/11/2019

2457MHz_TX



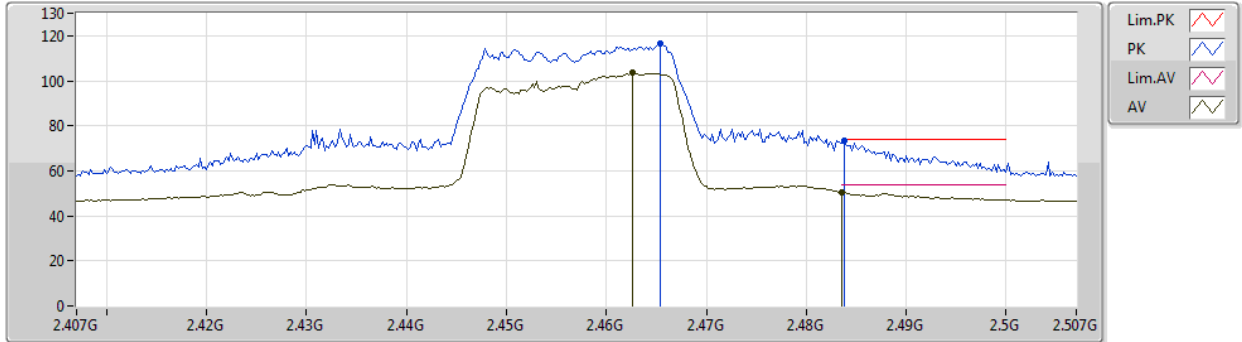
Type	Freq (Hz)	Level (dBuV/m)	Limit (dBuV/m)	Margin (dB)	Factor (dB)	Dist (m)	Condition	Azimuth (°)	Height (m)	Comment	Raw (dBuV)	AF (dB)	CL (dB)	PA (dB)
AV	2.461G	105.58	Inf	-Inf	32.38	3	Vertical	359	1.67	-	73.20	27.58	4.80	-
AV	2.4838G	48.28	54.00	-5.72	32.48	3	Vertical	359	1.67	-	15.80	27.65	4.83	-
PK	2.4654G	118.07	Inf	-Inf	32.41	3	Vertical	359	1.67	-	85.66	27.60	4.81	-
PK	2.4838G	65.74	74.00	-8.26	32.48	3	Vertical	359	1.67	-	33.26	27.65	4.83	-



802.11ax HEW20-BF_Nss1,(MCS0)_2TX

23/11/2019

2457MHz_TX

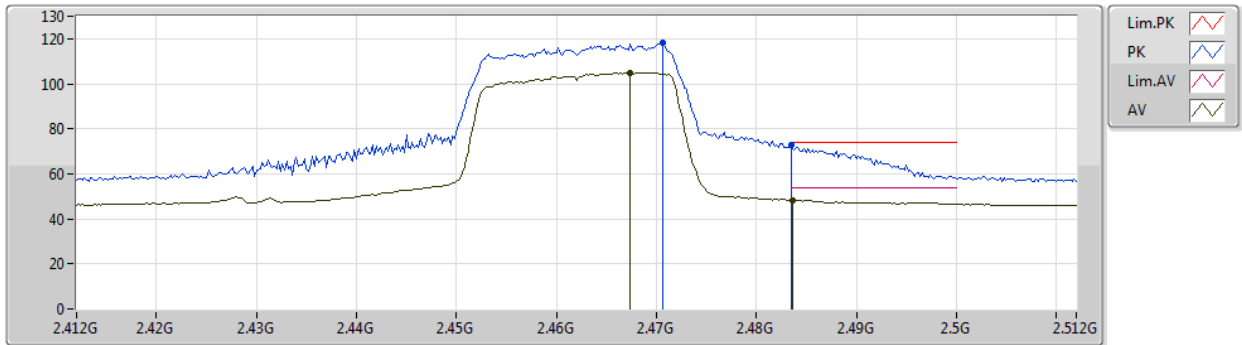


Type	Freq (Hz)	Level (dBuV/m)	Limit (dBuV/m)	Margin (dB)	Factor (dB)	Dist (m)	Condition	Azimuth (°)	Height (m)	Comment	Raw (dBuV)	AF (dB)	CL (dB)	PA (dB)
AV	2.4626G	103.40	Inf	-Inf	32.39	3	Horizontal	351	1.19	-	71.01	27.59	4.80	-
AV	2.4835G	50.42	54.00	-3.58	32.48	3	Horizontal	351	1.19	-	17.94	27.65	4.83	-
PK	2.4654G	116.56	Inf	-Inf	32.41	3	Horizontal	351	1.19	-	84.15	27.60	4.81	-
PK	2.4838G	73.54	74.00	-0.46	32.48	3	Horizontal	351	1.19	-	41.06	27.65	4.83	-



802.11ax HEW20-BF_Nss1,(MCS0)_2TX
2462MHz_TX

23/11/2019



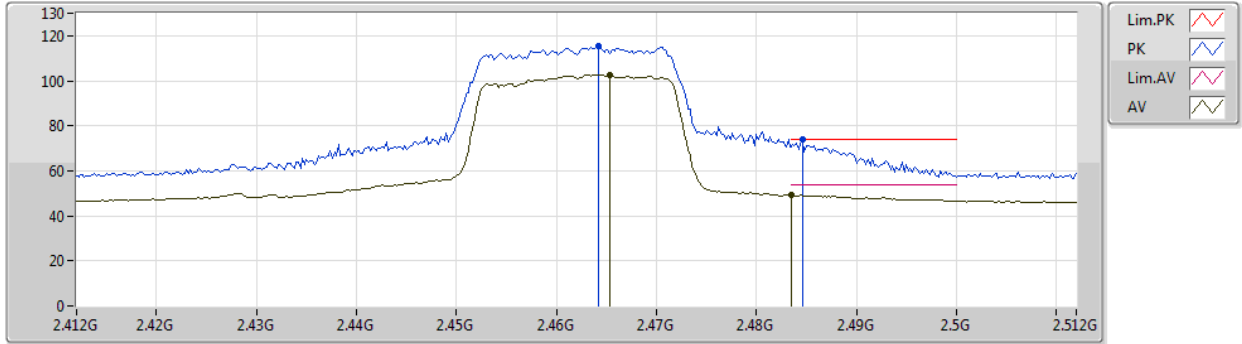
Type	Freq (Hz)	Level (dBuV/m)	Limit (dBuV/m)	Margin (dB)	Factor (dB)	Dist (m)	Condition	Azimuth (°)	Height (m)	Comment	Raw (dBuV)	AF (dB)	CL (dB)	PA (dB)
AV	2.4674G	104.88	Inf	-Inf	32.41	3	Vertical	3	1.47	-	72.47	27.60	4.81	-
AV	2.4836G	48.28	54.00	-5.72	32.48	3	Vertical	3	1.47	-	15.80	27.65	4.83	-
PK	2.4706G	117.99	Inf	-Inf	32.42	3	Vertical	3	1.47	-	85.57	27.61	4.81	-
PK	2.4835G	72.61	74.00	-1.39	32.48	3	Vertical	3	1.47	-	40.13	27.65	4.83	-



802.11ax HEW20-BF_Nss1,(MCS0)_2TX

23/11/2019

2462MHz_TX



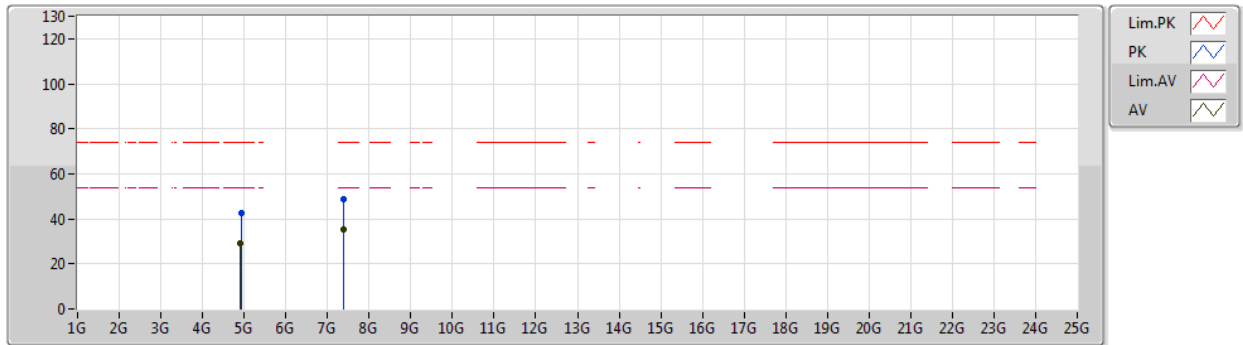
Type	Freq (Hz)	Level (dBuV/m)	Limit (dBuV/m)	Margin (dB)	Factor (dB)	Dist (m)	Condition	Azimuth (°)	Height (m)	Comment	Raw (dBuV)	AF (dB)	CL (dB)	PA (dB)
AV	2.4654G	102.63	Inf	-Inf	32.41	3	Horizontal	360	1.17	-	70.22	27.60	4.81	-
AV	2.4835G	49.13	54.00	-4.87	32.48	3	Horizontal	360	1.17	-	16.65	27.65	4.83	-
PK	2.4642G	115.33	Inf	-Inf	32.40	3	Horizontal	360	1.17	-	82.93	27.59	4.81	-
PK	2.4846G	73.81	74.00	-0.19	32.48	3	Horizontal	360	1.17	-	41.33	27.65	4.83	-



802.11ax HEW20-BF_Nss1,(MCS0)_2TX

23/11/2019

2462MHz_TX



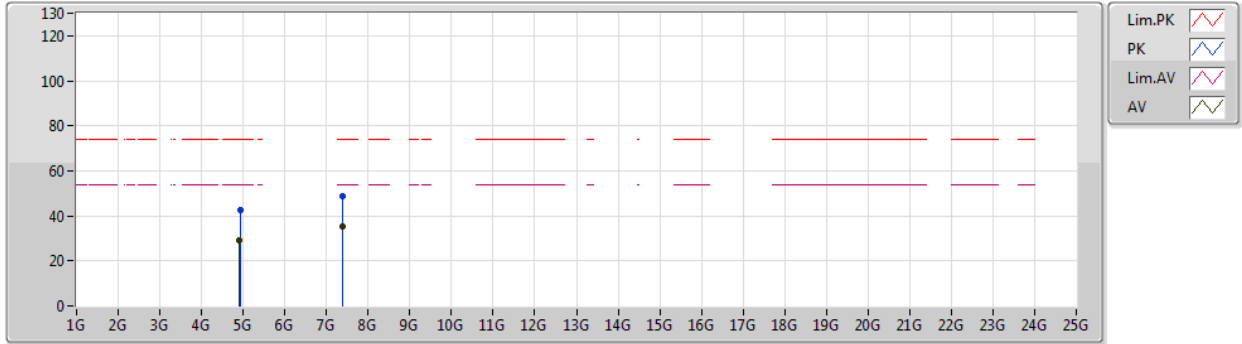
Type	Freq (Hz)	Level (dBuV/m)	Limit (dBuV/m)	Margin (dB)	Factor (dB)	Dist (m)	Condition	Azimuth (°)	Height (m)	Comment	Raw (dBuV)	AF (dB)	CL (dB)	PA (dB)
AV	4.91926G	29.37	54.00	-24.63	4.52	3	Vertical	290	2.15	-	24.85	31.55	6.82	33.85
AV	7.3882G	35.43	54.00	-18.57	10.75	3	Vertical	244	2.04	-	24.68	36.21	8.65	34.11
PK	4.92806G	42.73	74.00	-31.27	4.55	3	Vertical	290	2.15	-	38.18	31.57	6.82	33.84
PK	7.38838G	48.73	74.00	-25.27	10.75	3	Vertical	244	2.04	-	37.98	36.21	8.65	34.11



802.11ax HEW20-BF_Nss1,(MCS0)_2TX

23/11/2019

2462MHz_TX



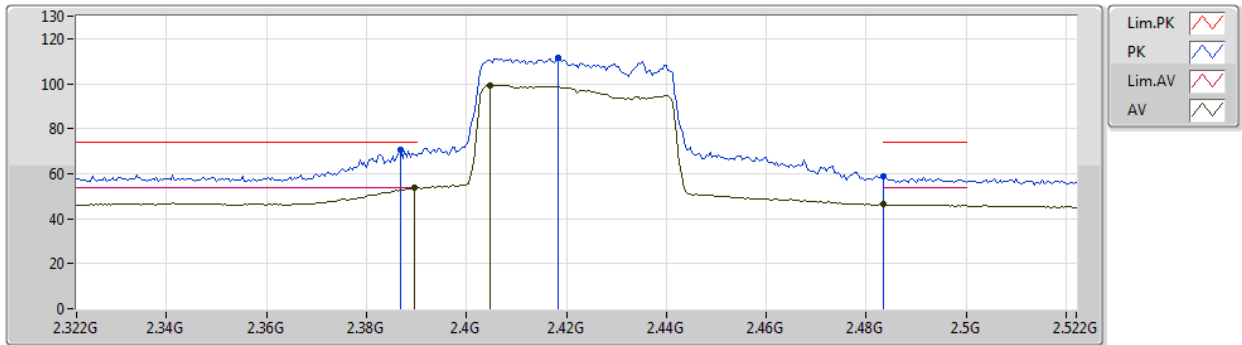
Type	Freq (Hz)	Level (dBuV/m)	Limit (dBuV/m)	Margin (dB)	Factor (dB)	Dist (m)	Condition	Azimuth (°)	Height (m)	Comment	Raw (dBuV)	AF (dB)	CL (dB)	PA (dB)
AV	4.91904G	29.31	54.00	-24.69	4.52	3	Horizontal	197	2.20	-	24.79	31.55	6.82	33.85
AV	7.38626G	35.57	54.00	-18.43	10.74	3	Horizontal	23	1.27	-	24.83	36.20	8.65	34.11
PK	4.92632G	42.62	74.00	-31.38	4.55	3	Horizontal	197	2.20	-	38.07	31.57	6.82	33.84
PK	7.38794G	48.55	74.00	-25.45	10.75	3	Horizontal	23	1.27	-	37.80	36.21	8.65	34.11



802.11ax HEW40-BF_Nss1,(MCS0)_2TX

23/11/2019

2422MHz_TX

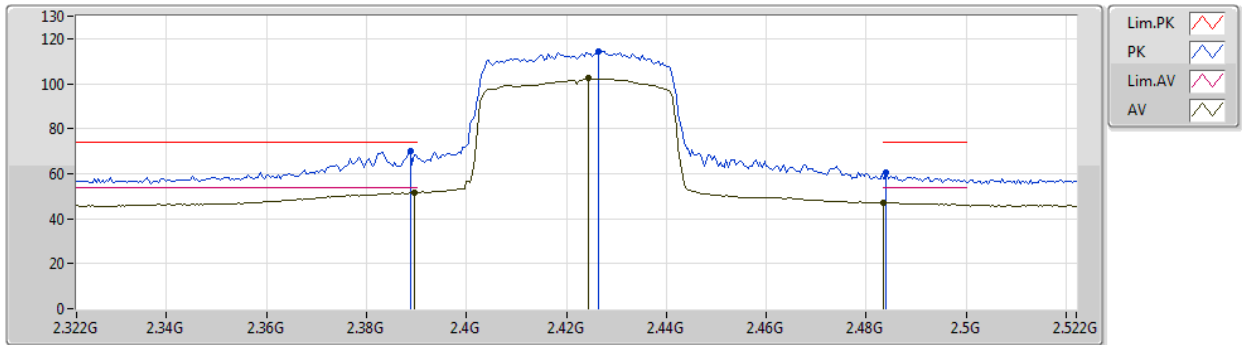


Type	Freq (Hz)	Level (dBuV/m)	Limit (dBuV/m)	Margin (dB)	Factor (dB)	Dist (m)	Condition	Azimuth (°)	Height (m)	Comment	Raw (dBuV)	AF (dB)	CL (dB)	PA (dB)
AV	2.3896G	53.54	54.00	-0.46	32.09	3	Vertical	6	1.49	-	21.45	27.37	4.72	-
AV	2.4048G	99.19	Inf	-Inf	32.15	3	Vertical	6	1.49	-	67.04	27.41	4.74	-
AV	2.4835G	46.45	54.00	-7.55	32.48	3	Vertical	6	1.49	-	13.97	27.65	4.83	-
PK	2.3868G	70.55	74.00	-3.45	32.07	3	Vertical	6	1.49	-	38.48	27.36	4.71	-
PK	2.4184G	111.47	Inf	-Inf	32.21	3	Vertical	6	1.49	-	79.26	27.46	4.75	-
PK	2.4835G	59.07	74.00	-14.93	32.48	3	Vertical	6	1.49	-	26.59	27.65	4.83	-



802.11ax HEW40-BF_Nss1,(MCS0)_2TX
2422MHz_TX

23/11/2019



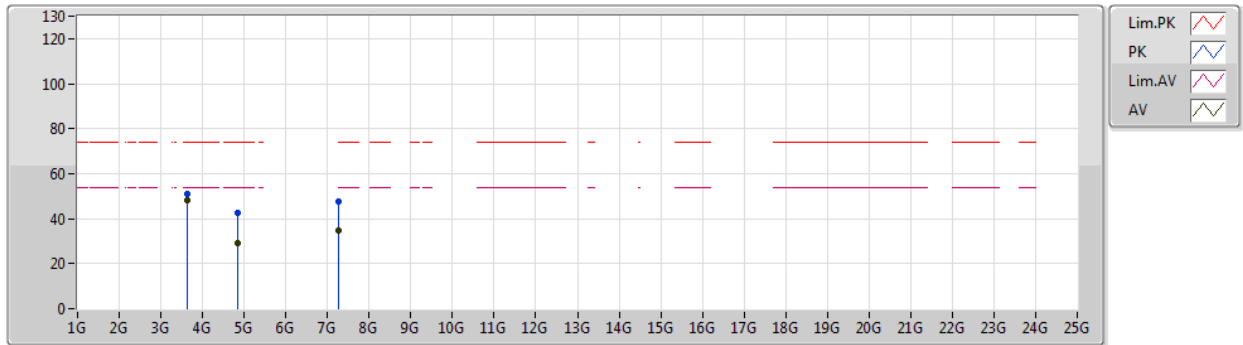
Type	Freq (Hz)	Level (dBuV/m)	Limit (dBuV/m)	Margin (dB)	Factor (dB)	Dist (m)	Condition	Azimuth (°)	Height (m)	Comment	Raw (dBuV)	AF (dB)	CL (dB)	PA (dB)
AV	2.3896G	51.73	54.00	-2.27	32.09	3	Horizontal	0	1.35	-	19.64	27.37	4.72	-
AV	2.4244G	102.28	Inf	-Inf	32.23	3	Horizontal	0	1.35	-	70.05	27.47	4.76	-
AV	2.4835G	47.03	54.00	-6.97	32.48	3	Horizontal	0	1.35	-	14.55	27.65	4.83	-
PK	2.3888G	69.83	74.00	-4.17	32.09	3	Horizontal	0	1.35	-	37.74	27.37	4.72	-
PK	2.4264G	114.37	Inf	-Inf	32.24	3	Horizontal	0	1.35	-	82.13	27.48	4.76	-
PK	2.484G	60.40	74.00	-13.60	32.48	3	Horizontal	0	1.35	-	27.92	27.65	4.83	-



802.11ax HEW40-BF_Nss1,(MCS0)_2TX

23/11/2019

2422MHz_TX



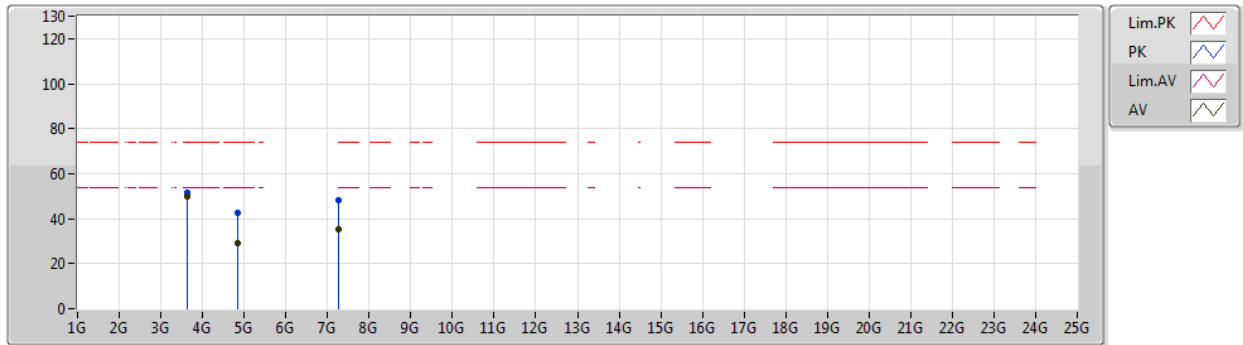
Type	Freq (Hz)	Level (dBuV/m)	Limit (dBuV/m)	Margin (dB)	Factor (dB)	Dist (m)	Condition	Azimuth (°)	Height (m)	Comment	Raw (dBuV)	AF (dB)	CL (dB)	PA (dB)
AV	3.633G	48.19	54.00	-5.81	0.91	3	Vertical	221	1.26	-	47.28	29.04	5.97	34.10
AV	4.8453G	29.28	54.00	-24.72	4.33	3	Vertical	4	2.25	-	24.95	31.42	6.80	33.89
AV	7.26148G	34.91	54.00	-19.09	10.36	3	Vertical	256	2.38	-	24.55	35.88	8.59	34.11
PK	3.63305G	50.81	74.00	-23.19	0.91	3	Vertical	221	1.26	-	49.90	29.04	5.97	34.10
PK	4.8429G	42.69	74.00	-31.31	4.33	3	Vertical	4	2.25	-	38.36	31.42	6.80	33.89
PK	7.26104G	47.72	74.00	-26.28	10.36	3	Vertical	256	2.38	-	37.36	35.88	8.59	34.11



802.11ax HEW40-BF_Nss1,(MCS0)_2TX

23/11/2019

2422MHz_TX

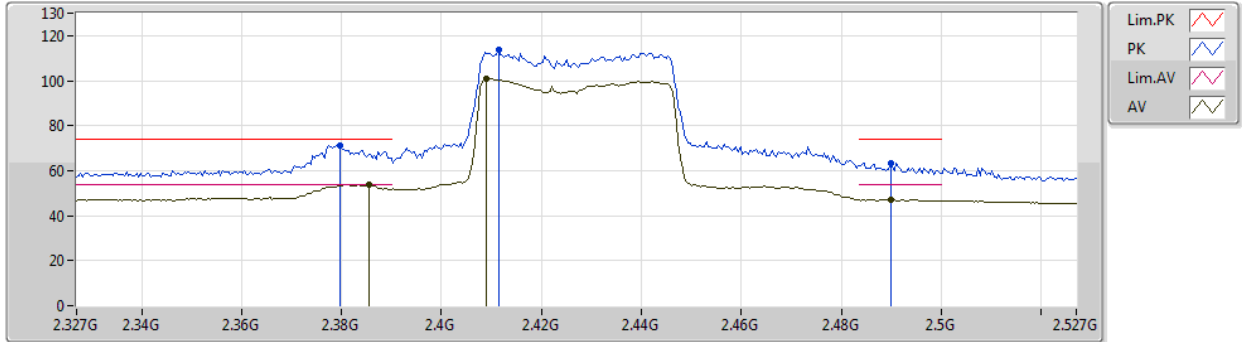


Type	Freq (Hz)	Level (dBuV/m)	Limit (dBuV/m)	Margin (dB)	Factor (dB)	Dist (m)	Condition	Azimuth (°)	Height (m)	Comment	Raw (dBuV)	AF (dB)	CL (dB)	PA (dB)
AV	3.63304G	49.78	54.00	-4.22	0.91	3	Horizontal	206	1.56	-	48.87	29.04	5.97	34.10
AV	4.84236G	29.20	54.00	-24.80	4.33	3	Horizontal	230	2.22	-	24.87	31.42	6.80	33.89
AV	7.26122G	35.05	54.00	-18.95	10.36	3	Horizontal	77	1.35	-	24.69	35.88	8.59	34.11
PK	3.633G	51.67	74.00	-22.33	0.91	3	Horizontal	206	1.56	-	50.76	29.04	5.97	34.10
PK	4.84504G	42.78	74.00	-31.22	4.33	3	Horizontal	230	2.22	-	38.45	31.42	6.80	33.89
PK	7.26534G	47.91	74.00	-26.09	10.37	3	Horizontal	77	1.35	-	37.54	35.89	8.59	34.11



802.11ax HEW40-BF_Nss1,(MCS0)_2TX
2427MHz_TX

23/11/2019

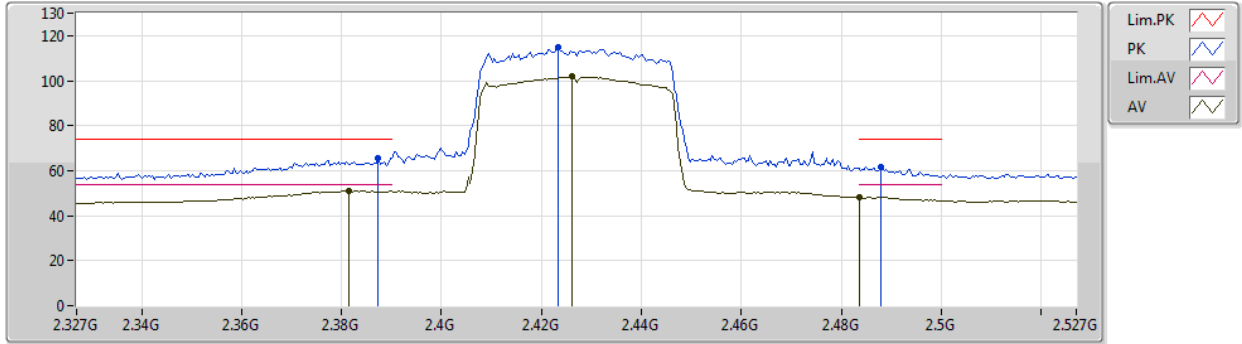


Type	Freq (Hz)	Level (dBuV/m)	Limit (dBuV/m)	Margin (dB)	Factor (dB)	Dist (m)	Condition	Azimuth (°)	Height (m)	Comment	Raw (dBuV)	AF (dB)	CL (dB)	PA (dB)
AV	2.3854G	53.74	54.00	-0.26	32.07	3	Vertical	0	2.20	-	21.67	27.36	4.71	-
AV	2.409G	101.08	Inf	-Inf	32.17	3	Vertical	0	2.20	-	68.91	27.43	4.74	-
AV	2.4898G	47.27	54.00	-6.73	32.51	3	Vertical	0	2.20	-	14.76	27.67	4.84	-
PK	2.3798G	71.36	74.00	-2.64	32.05	3	Vertical	0	2.20	-	39.31	27.34	4.71	-
PK	2.4114G	113.70	Inf	-Inf	32.17	3	Vertical	0	2.20	-	81.53	27.43	4.74	-
PK	2.4898G	63.41	74.00	-10.59	32.51	3	Vertical	0	2.20	-	30.90	27.67	4.84	-



802.11ax HEW40-BF_Nss1,(MCS0)_2TX
2427MHz_TX

23/11/2019

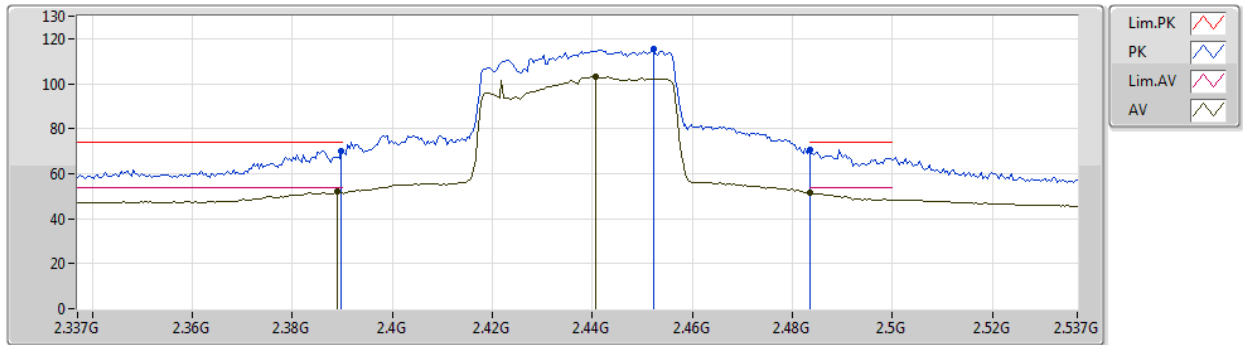


Type	Freq (Hz)	Level (dBuV/m)	Limit (dBuV/m)	Margin (dB)	Factor (dB)	Dist (m)	Condition	Azimuth (°)	Height (m)	Comment	Raw (dBuV)	AF (dB)	CL (dB)	PA (dB)
AV	2.3814G	51.23	54.00	-2.77	32.05	3	Horizontal	0	1.63	-	19.18	27.34	4.71	-
AV	2.4262G	101.75	Inf	-Inf	32.24	3	Horizontal	0	1.63	-	69.51	27.48	4.76	-
AV	2.4835G	48.26	54.00	-5.74	32.48	3	Horizontal	0	1.63	-	15.78	27.65	4.83	-
PK	2.3874G	65.79	74.00	-8.21	32.08	3	Horizontal	0	1.63	-	33.71	27.36	4.72	-
PK	2.4234G	114.63	Inf	-Inf	32.23	3	Horizontal	0	1.63	-	82.40	27.47	4.76	-
PK	2.4878G	61.48	74.00	-12.52	32.49	3	Horizontal	0	1.63	-	28.99	27.66	4.83	-



802.11ax HEW40-BF_Nss1,(MCS0)_2TX
2437MHz_TX

23/11/2019

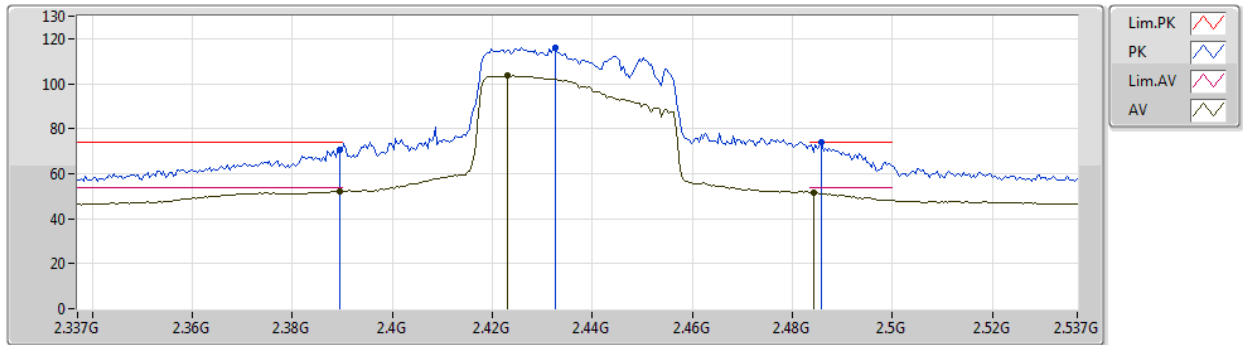


Type	Freq (Hz)	Level (dBuV/m)	Limit (dBuV/m)	Margin (dB)	Factor (dB)	Dist (m)	Condition	Azimuth (°)	Height (m)	Comment	Raw (dBuV)	AF (dB)	CL (dB)	PA (dB)
AV	2.389G	51.90	54.00	-2.10	32.09	3	Vertical	0	1.94	-	19.81	27.37	4.72	-
AV	2.4406G	103.10	Inf	-Inf	32.30	3	Vertical	0	1.94	-	70.80	27.52	4.78	-
AV	2.4835G	51.52	54.00	-2.48	32.48	3	Vertical	0	1.94	-	19.04	27.65	4.83	-
PK	2.3898G	70.18	74.00	-3.82	32.09	3	Vertical	0	1.94	-	38.09	27.37	4.72	-
PK	2.4522G	115.49	Inf	-Inf	32.35	3	Vertical	0	1.94	-	83.14	27.56	4.79	-
PK	2.4835G	70.48	74.00	-3.52	32.48	3	Vertical	0	1.94	-	38.00	27.65	4.83	-



802.11ax HEW40-BF_Nss1,(MCS0)_2TX
2437MHz_TX

23/11/2019



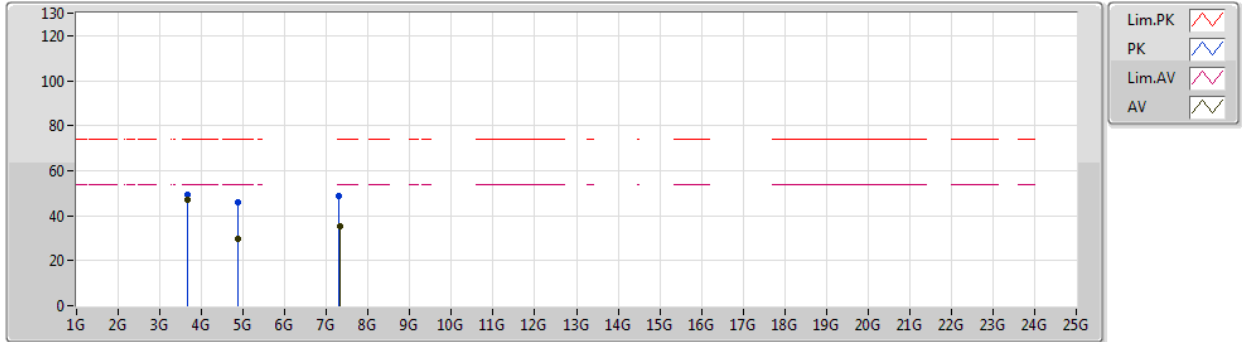
Type	Freq (Hz)	Level (dBuV/m)	Limit (dBuV/m)	Margin (dB)	Factor (dB)	Dist (m)	Condition	Azimuth (°)	Height (m)	Comment	Raw (dBuV)	AF (dB)	CL (dB)	PA (dB)
AV	2.3894G	52.13	54.00	-1.87	32.09	3	Horizontal	0	1.30	-	20.04	27.37	4.72	-
AV	2.423G	103.53	Inf	-Inf	32.23	3	Horizontal	0	1.30	-	71.30	27.47	4.76	-
AV	2.4842G	51.52	54.00	-2.48	32.48	3	Horizontal	0	1.30	-	19.04	27.65	4.83	-
PK	2.3894G	70.63	74.00	-3.37	32.09	3	Horizontal	0	1.30	-	38.54	27.37	4.72	-
PK	2.4326G	115.89	Inf	-Inf	32.27	3	Horizontal	0	1.30	-	83.62	27.50	4.77	-
PK	2.4858G	73.90	74.00	-0.10	32.49	3	Horizontal	0	1.30	-	41.41	27.66	4.83	-



802.11ax HEW40-BF_Nss1,(MCS0)_2TX

23/11/2019

2437MHz_TX



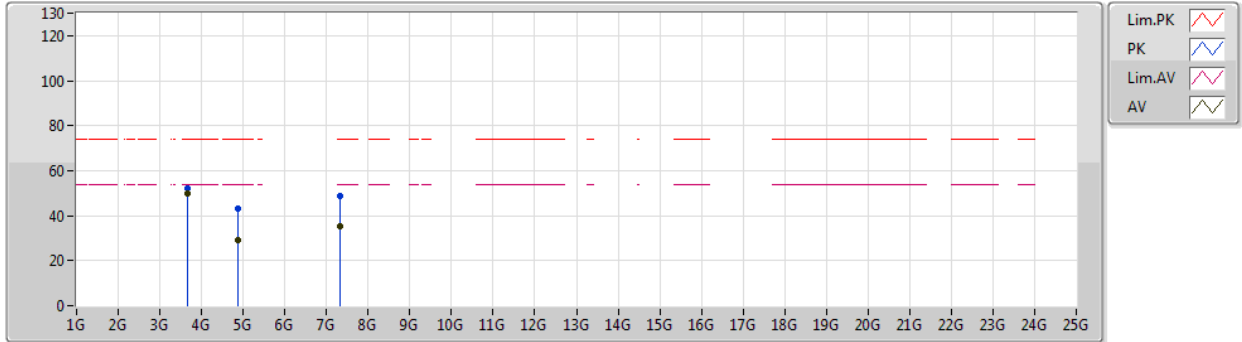
Type	Freq (Hz)	Level (dBuV/m)	Limit (dBuV/m)	Margin (dB)	Factor (dB)	Dist (m)	Condition	Azimuth (°)	Height (m)	Comment	Raw (dBuV)	AF (dB)	CL (dB)	PA (dB)
AV	3.65555G	46.88	54.00	-7.12	1.01	3	Vertical	242	2.44	-	45.87	29.08	6.02	34.09
AV	4.87524G	29.43	54.00	-24.57	4.42	3	Vertical	28	1.73	-	25.01	31.48	6.81	33.87
AV	7.31288G	35.34	54.00	-18.66	10.51	3	Vertical	337	2.07	-	24.83	36.01	8.61	34.11
PK	3.65549G	49.46	74.00	-24.54	1.01	3	Vertical	242	2.44	-	48.45	29.08	6.02	34.09
PK	4.87408G	45.67	74.00	-28.33	4.41	3	Vertical	28	1.73	-	41.26	31.47	6.81	33.87
PK	7.30928G	48.72	74.00	-25.28	10.50	3	Vertical	337	2.07	-	38.22	36.00	8.61	34.11



802.11ax HEW40-BF_Nss1,(MCS0)_2TX

23/11/2019

2437MHz_TX



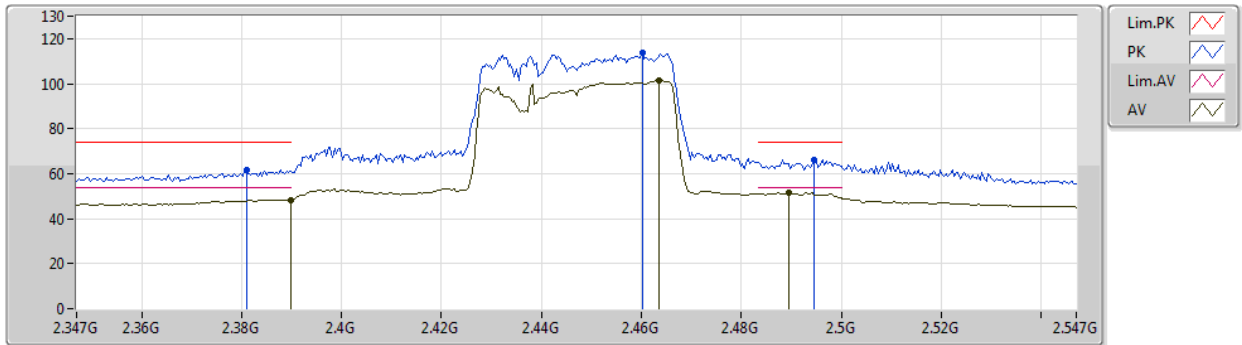
Type	Freq (Hz)	Level (dBuV/m)	Limit (dBuV/m)	Margin (dB)	Factor (dB)	Dist (m)	Condition	Azimuth (°)	Height (m)	Comment	Raw (dBuV)	AF (dB)	CL (dB)	PA (dB)
AV	3.65552G	50.09	54.00	-3.91	1.01	3	Horizontal	205	1.74	-	49.08	29.08	6.02	34.09
AV	4.87678G	29.41	54.00	-24.59	4.42	3	Horizontal	120	1.44	-	24.99	31.48	6.81	33.87
AV	7.3148G	35.22	54.00	-18.78	10.52	3	Horizontal	270	1.96	-	24.70	36.02	8.61	34.11
PK	3.65558G	51.88	74.00	-22.12	1.01	3	Horizontal	205	1.74	-	50.87	29.08	6.02	34.09
PK	4.8701G	43.20	74.00	-30.80	4.41	3	Horizontal	120	1.44	-	38.79	31.47	6.81	33.87
PK	7.31224G	48.54	74.00	-25.46	10.51	3	Horizontal	270	1.96	-	38.03	36.01	8.61	34.11



802.11ax HEW40-BF_Nss1,(MCS0)_2TX

23/11/2019

2447MHz_TX

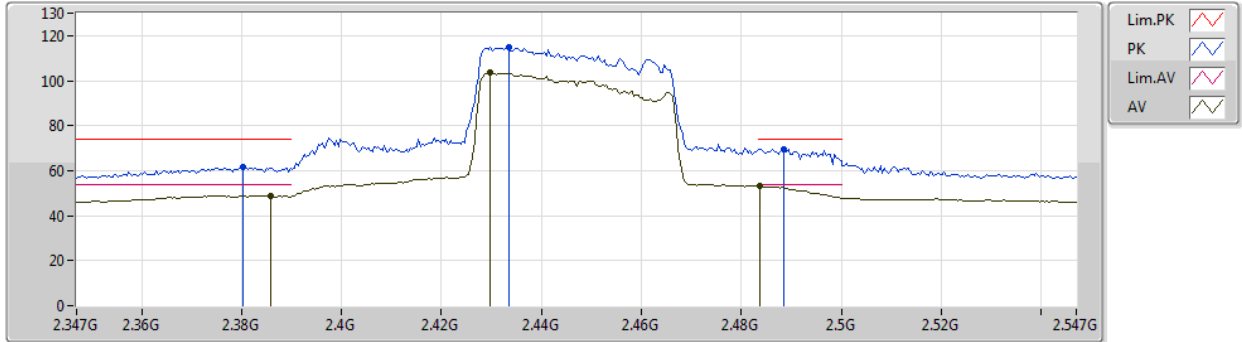


Type	Freq (Hz)	Level (dBuV/m)	Limit (dBuV/m)	Margin (dB)	Factor (dB)	Dist (m)	Condition	Azimuth (°)	Height (m)	Comment	Raw (dBuV)	AF (dB)	CL (dB)	PA (dB)
AV	2.3898G	48.46	54.00	-5.54	32.09	3	Vertical	359	1.49	-	16.37	27.37	4.72	-
AV	2.4634G	101.58	Inf	-Inf	32.39	3	Vertical	359	1.49	-	69.19	27.59	4.80	-
AV	2.4894G	51.49	54.00	-2.51	32.50	3	Vertical	359	1.49	-	18.99	27.67	4.83	-
PK	2.381G	61.68	74.00	-12.32	32.05	3	Vertical	359	1.49	-	29.63	27.34	4.71	-
PK	2.4602G	113.48	Inf	-Inf	32.38	3	Vertical	359	1.49	-	81.10	27.58	4.80	-
PK	2.4946G	66.39	74.00	-7.61	32.52	3	Vertical	359	1.49	-	33.87	27.68	4.84	-



802.11ax HEW40-BF_Nss1,(MCS0)_2TX
2447MHz_TX

23/11/2019

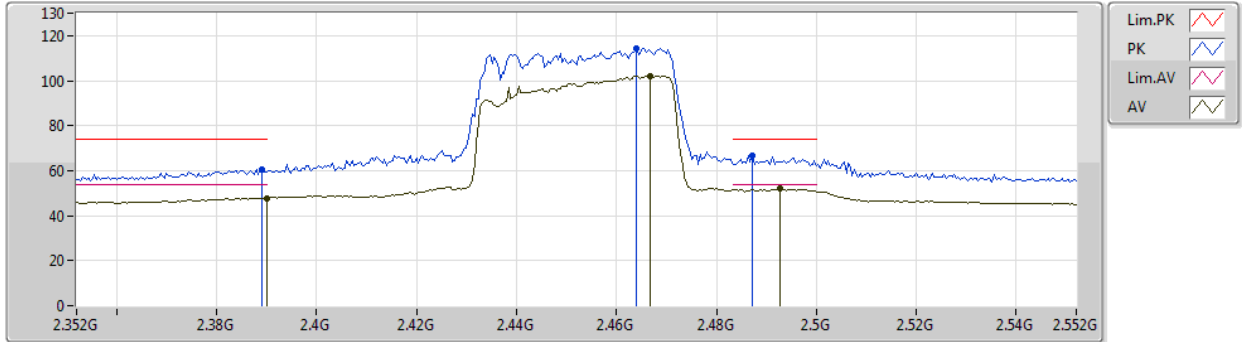


Type	Freq (Hz)	Level (dBuV/m)	Limit (dBuV/m)	Margin (dB)	Factor (dB)	Dist (m)	Condition	Azimuth (°)	Height (m)	Comment	Raw (dBuV)	AF (dB)	CL (dB)	PA (dB)
AV	2.3858G	48.96	54.00	-5.04	32.07	3	Horizontal	6	1.48	-	16.89	27.36	4.71	-
AV	2.4298G	103.69	Inf	-Inf	32.25	3	Horizontal	6	1.48	-	71.44	27.49	4.76	-
AV	2.4838G	53.35	54.00	-0.65	32.48	3	Horizontal	6	1.48	-	20.87	27.65	4.83	-
PK	2.3802G	61.52	74.00	-12.48	32.05	3	Horizontal	6	1.48	-	29.47	27.34	4.71	-
PK	2.4334G	114.84	Inf	-Inf	32.27	3	Horizontal	6	1.48	-	82.57	27.50	4.77	-
PK	2.4886G	69.54	74.00	-4.46	32.50	3	Horizontal	6	1.48	-	37.04	27.67	4.83	-



802.11ax HEW40-BF_Nss1,(MCS0)_2TX
2452MHz_TX

23/11/2019



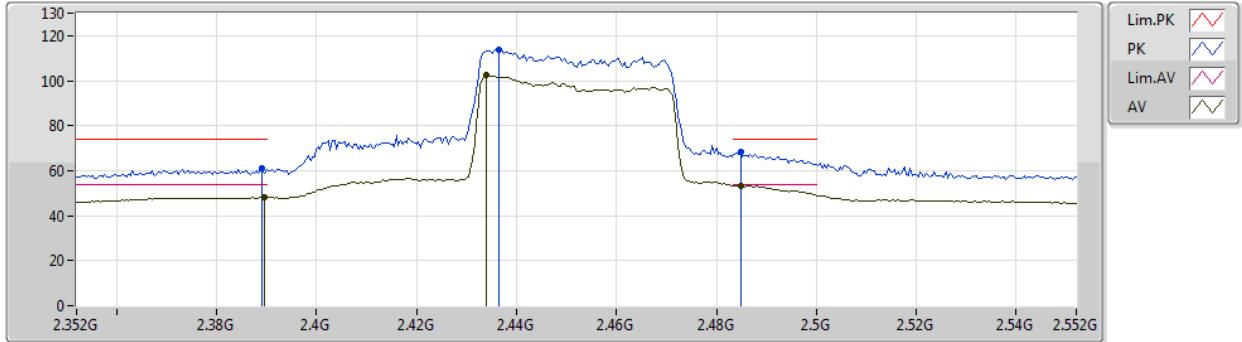
Type	Freq (Hz)	Level (dBuV/m)	Limit (dBuV/m)	Margin (dB)	Factor (dB)	Dist (m)	Condition	Azimuth (°)	Height (m)	Comment	Raw (dBuV)	AF (dB)	CL (dB)	PA (dB)
AV	2.39G	47.89	54.00	-6.11	32.09	3	Vertical	3	1.49	-	15.80	27.37	4.72	-
AV	2.4668G	102.18	Inf	-Inf	32.41	3	Vertical	3	1.49	-	69.77	27.60	4.81	-
AV	2.4928G	51.85	54.00	-2.15	32.52	3	Vertical	3	1.49	-	19.33	27.68	4.84	-
PK	2.3892G	60.47	74.00	-13.53	32.09	3	Vertical	3	1.49	-	28.38	27.37	4.72	-
PK	2.464G	114.34	Inf	-Inf	32.39	3	Vertical	3	1.49	-	81.95	27.59	4.80	-
PK	2.4872G	66.54	74.00	-7.46	32.49	3	Vertical	3	1.49	-	34.05	27.66	4.83	-



802.11ax HEW40-BF_Nss1,(MCS0)_2TX

23/11/2019

2452MHz_TX



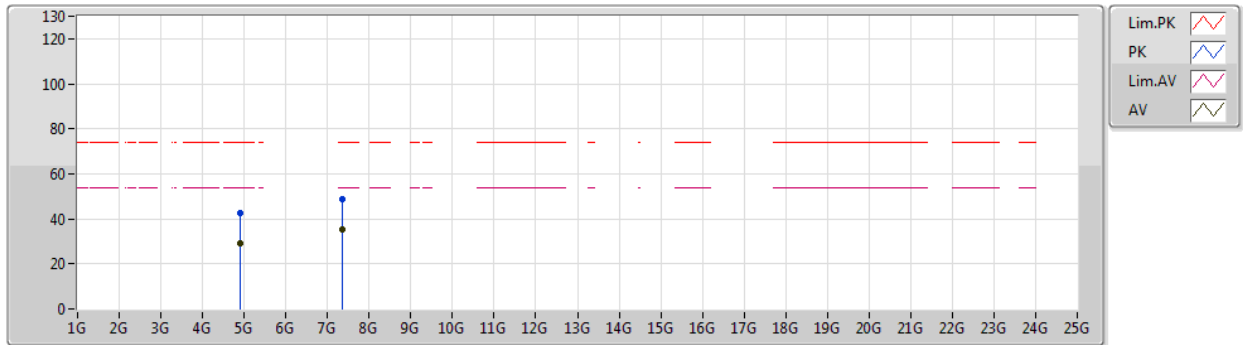
Type	Freq (Hz)	Level (dBuV/m)	Limit (dBuV/m)	Margin (dB)	Factor (dB)	Dist (m)	Condition	Azimuth (°)	Height (m)	Comment	Raw (dBuV)	AF (dB)	CL (dB)	PA (dB)
AV	2.3896G	48.08	54.00	-5.92	32.09	3	Horizontal	2	1.38	-	15.99	27.37	4.72	-
AV	2.434G	102.29	Inf	-Inf	32.27	3	Horizontal	2	1.38	-	70.02	27.50	4.77	-
AV	2.4848G	53.38	54.00	-0.62	32.48	3	Horizontal	2	1.38	-	20.90	27.65	4.83	-
PK	2.3892G	60.83	74.00	-13.17	32.09	3	Horizontal	2	1.38	-	28.74	27.37	4.72	-
PK	2.4364G	113.83	Inf	-Inf	32.28	3	Horizontal	2	1.38	-	81.55	27.51	4.77	-
PK	2.4848G	68.34	74.00	-5.66	32.48	3	Horizontal	2	1.38	-	35.86	27.65	4.83	-



802.11ax HEW40-BF_Nss1,(MCS0)_2TX

23/11/2019

2452MHz_TX



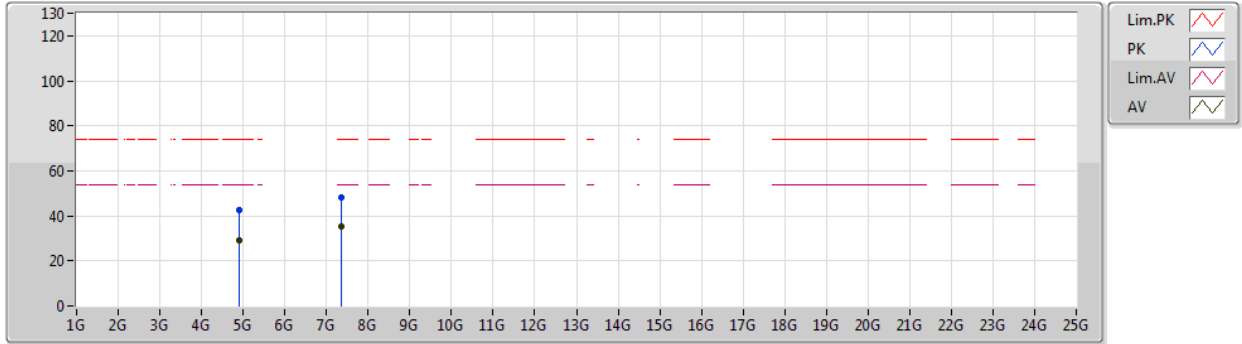
Type	Freq (Hz)	Level (dBuV/m)	Limit (dBuV/m)	Margin (dB)	Factor (dB)	Dist (m)	Condition	Azimuth (°)	Height (m)	Comment	Raw (dBuV)	AF (dB)	CL (dB)	PA (dB)
AV	4.9021G	29.37	54.00	-24.63	4.48	3	Vertical	21	2.43	-	24.89	31.52	6.82	33.86
AV	7.35906G	35.14	54.00	-18.86	10.66	3	Vertical	127	2.11	-	24.48	36.13	8.64	34.11
PK	4.9068G	42.76	74.00	-31.24	4.49	3	Vertical	21	2.43	-	38.27	31.53	6.82	33.86
PK	7.35336G	49.02	74.00	-24.98	10.65	3	Vertical	127	2.11	-	38.37	36.12	8.64	34.11



802.11ax HEW40-BF_Nss1,(MCS0)_2TX

23/11/2019

2452MHz_TX



Type	Freq (Hz)	Level (dBuV/m)	Limit (dBuV/m)	Margin (dB)	Factor (dB)	Dist (m)	Condition	Azimuth (°)	Height (m)	Comment	Raw (dBuV)	AF (dB)	CL (dB)	PA (dB)
AV	4.9042G	29.41	54.00	-24.59	4.49	3	Horizontal	341	2.04	-	24.92	31.53	6.82	33.86
AV	7.3606G	35.26	54.00	-18.74	10.67	3	Horizontal	321	1.43	-	24.59	36.14	8.64	34.11
PK	4.904G	42.63	74.00	-31.37	4.49	3	Horizontal	341	2.04	-	38.14	31.53	6.82	33.86
PK	7.35738G	48.37	74.00	-25.63	10.66	3	Horizontal	321	1.43	-	37.71	36.13	8.64	34.11