



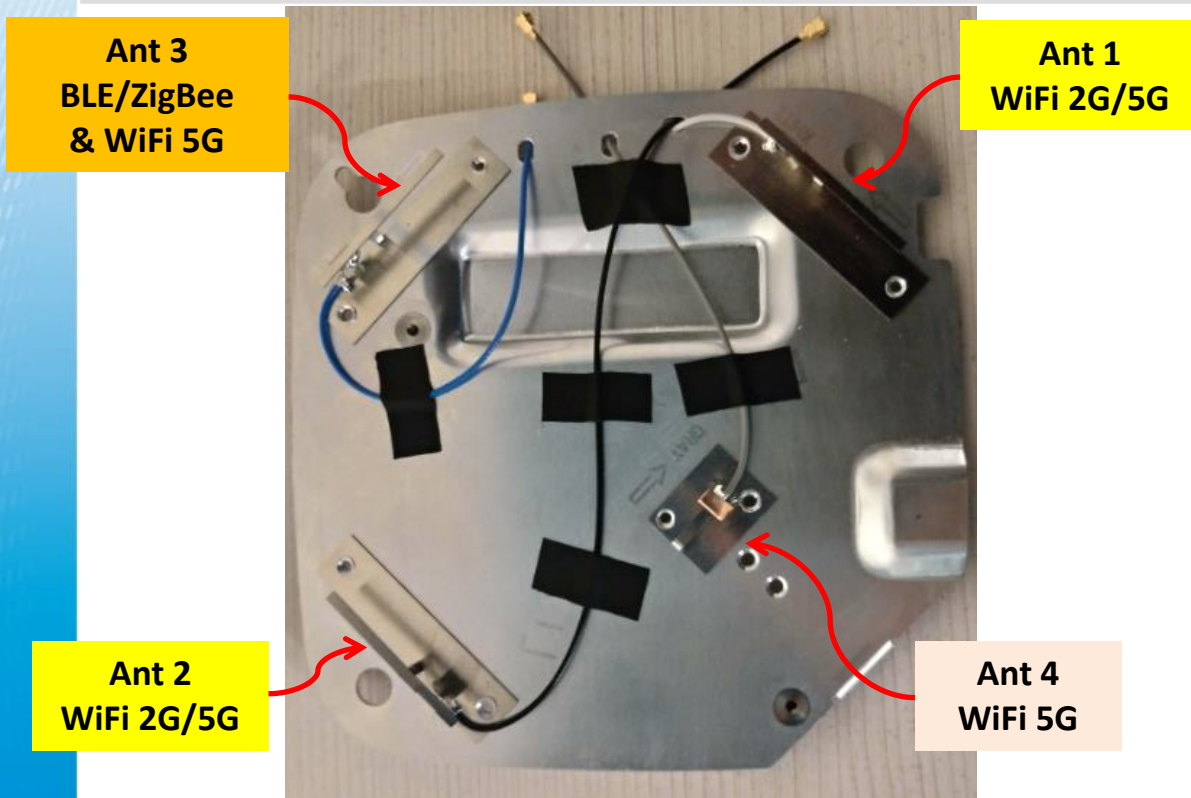
Aerohive AP305C Gain Table

Date : May 2, 2019

Prepared by : AK Chen



Antenna Structure & Placement



Ant No.	Operating Band	Type	Material	Feeding	Dimension
Ant 1~2 WiFi 2G/5G	2400 MHz ~ 2500 MHz 5150 MHz ~ 5850 MHz	PIFA	Metal	Cable	45 x 11.4 x 8.45 mm ³
Ant 3 BLE/ZigBee & WiFi 5G	2400 MHz ~ 2500 MHz 5150 MHz ~ 5850 MHz	PIFA	Metal	Cable	45 x 11.4 x 8.45 mm ³
Ant 4 WiFi 5G	5150 MHz ~ 5850 MHz	PIFA	Metal	Cable	15 x 19 x 9.3 mm ³

Peak Gain & Efficiency – Ant 1

Frequency (MHz)	Efficiency (%)	Peak Gain (dBi)
2400	66.2	2.40
2450	68.2	2.67
2500	70.8	2.46
5150	64.9	3.97
5350	62.8	3.49
5550	64.1	3.96
5725	60.9	3.25
5850	61.4	3.58

Peak Gain & Efficiency – Ant 2

Frequency (MHz)	Efficiency (%)	Peak Gain (dBi)
2400	64.8	2.37
2450	65.0	2.12
2500	63.5	2.07
5150	58.2	3.45
5350	59.8	3.09
5550	63.2	3.93
5725	55.1	3.63
5850	57.0	3.96

Peak Gain & Efficiency – Ant 3

Frequency (MHz)	Efficiency (%)	Peak Gain (dBi)
2400	62.8	2.10
2450	63.3	2.24
2500	58.9	2.40
5150	61.5	3.13
5350	60.8	2.79
5550	63.5	3.22
5725	56.5	3.42
5850	59.7	3.75

Peak Gain & Efficiency – Ant 4

Frequency (MHz)	Efficiency (%)	Peak Gain (dBi)
5150	63.6	2.50
5350	60.1	2.18
5550	63.3	2.95
5725	57.9	2.32
5850	60.1	2.61