

DW LINK

2003/05/01

Wireless Access Point

User's manual

Model: PL9510 - WAP



FCC STATEMENT

This product has been tested and complied with the specification for a class B digital device, pursuant to part 15 of the FCC rules. These limits are designed to provide reasonable protection against harmful interference in a residential installation.

This device complies with part 15 of the FCC Rules operation is subject to the following two conditions (1) This device may not cause harmful interference, and (2) This device must accept any interference received, including interference that may cause undesired operation.

If this device does cause harmful interference to radio or television, which is found by

tuning the equipment off and on, the user is encouraged to try to correct the interference by one or more of the following measures;

Reorient or relocate the receiving antenna.

Increase the separation between and equipment or device.

Connect the equipment to and outlet other than the receivers

Consult a dealer or an experienced radio/TV technician for assistance.

FCC Radiation Exposure Statement

This equipment complies with FCC radiation limits set forth for an uncontrolled environment. This equipment should be installed and operate with minimum distance 20 cm between radiator and your body.

Instruction

Step into the digital age and network your home or office the easy way Combining two revolutionary networking technologies developed as part of computing world' s most recent renaissance, Powerline and WiFi, the WireLink PL Wireless Access Point PL9510-WAP allows you to extend your Powerline network into a Wireless as well. Instantaneously, you can broaden your Powerline network beyond just the inside of your home or office and increase your wireless network from a mere 100feet to over 3,300 feet!

The WireLink PL Wireless Access Point offers a convenient way to create a simple network through the existing electrical wiring of a home or office with the additional ability to provide you with access to your network without wires. Offering two levels of security, the WireLink PL Wireless Access Point is built with 128-bit WEP encryption for the wireless pass-through and 56-bit DES encryption for the Powerline pass-through so your data will always be secured- guaranteed.

Features:

Up to 11 Mbps of Data Transmission

Interoperable with IEEE 802.11b (DSSS)

Capable of up to 128-bit WEP Encryption

Easy Set-up and Installation

Equipped with HomePlug® 1.0

Built-in Quality of Service (QoS) and Data Error Detection and Correction Technologies

Power, WLAN Tx, WLAN Rx, PL Act

Operate Range Supports 150m(Indoor)

Cabling Type

Standard AC Plug

Phone line

Environmental :

Dimensions (LxWxH)

3.9”Lx5”Wx1”H

Weight 0.69 lbs

Power Input : 110V AC

Safety & EMI :TBA

Operating Temperature

32°F to 131°F (0°C to 55°C)

Storage Temperature

-4°F to 131°F (-20°C to 70°C)

Operating Humidity

10% to 85% Non-condensing

Storage Humidity

5% to 90% Non-condensing

Package Contents:

One WireLink PL Wireless Access Point user manual

One AC adapter(AD75)

Two Detachable Antennae

one setup CD—ROM

One Wireless card (optional)

One hook up kits package

. One PA50 phone adaptor

System Requirements

A Note book with Wireless Card(IEEE 802.11b).

A PC with support Ethernet connection

Window 98, 2000, ME, XP

One WireLink PL product

A 10 Mbps Category 3 or Better network RJ-45 connection.

The WireLink PL Wireless Access Point Rear Panel



The WireLink PL Wireless Access Point's Ports

Dipole Antenna Connectors:

The Two round connectors(SMA F) are where the antenna are connected to the Access Point

This antenna connector (SMA-F) is “ unique” which is SMA- Female socket inside, male pin, it is different from normal one which is SMA-Female socket..

It has to install the original one shipping with package.

AD75 Power connector

The DC power connector are 3 pins, where the Power line signal are connected to unit. This is adapter includes coupler which is designed by WireLink company, it can't replace with any AC/DC adapter.

WireLink PL Wireless Access Point Front Panel



Power LED

It indicates the unit works, the adapter supplies power to unit.

Link Act

Powerline is working, communicates with other WireLink PL unit.

TX

Unit is transmitting data through air. Interoperable with IEEE 802.11b (DSSS)

RX

Unit is receiving data through air. Interoperable with IEEE 802.11b (DSSS)

Connecting and Setting up the WireLink PL Wireless Access Point

1. Locate an optimum location for the WireLink PL Wireless Access Point.

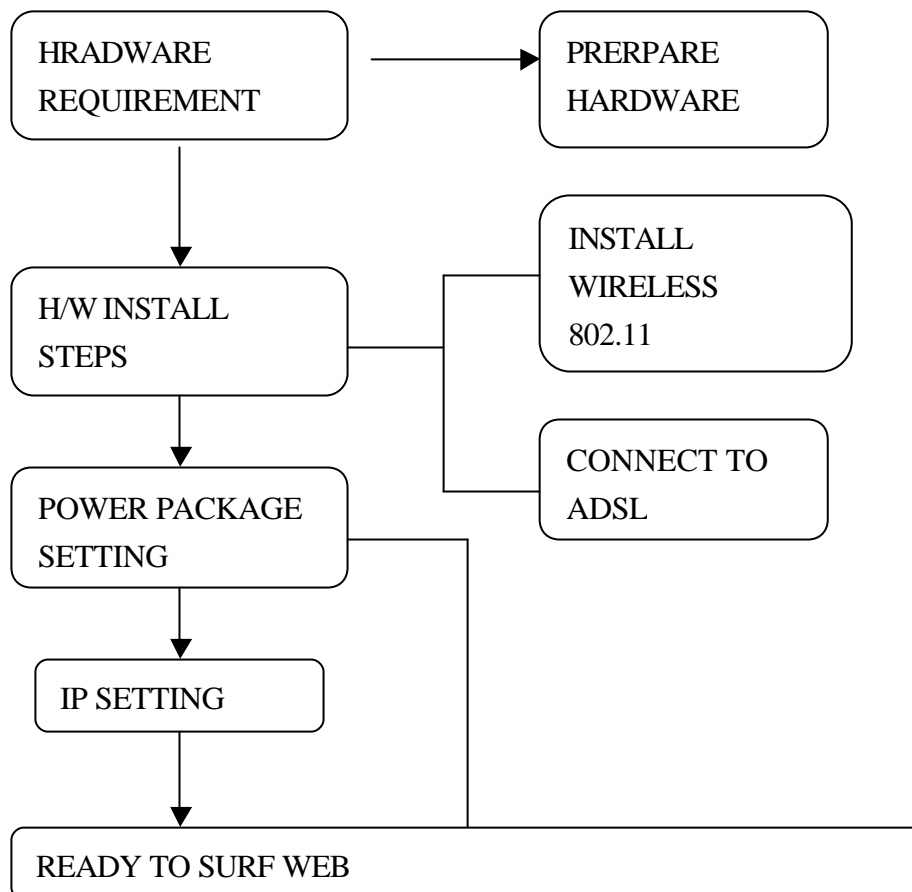
The best place for your WireLink PL Wireless Access Point is usually at the center of your wireless network, with line of signal to all your mobile stations.

2. Fix the direction of the antenna. Try to replace it in a position which can best cover you're wireless network. Normally, the higher you place the antenna, the better the performance will be. The antenna's position enhances the receiving sensitivity.

3. Connect the AD-75 Adapter to the WireLink PL units.

Only use adapter supplied with the WireLink PL Wireless Access Point . You could connect WireLink PL units. Use of a different adapter may cause product damage.

Now that the hardware installation is completed, proceed to set up the configuration.



WireLink PL Wireless Access Point Configuration setup process.

1. Network neighbor

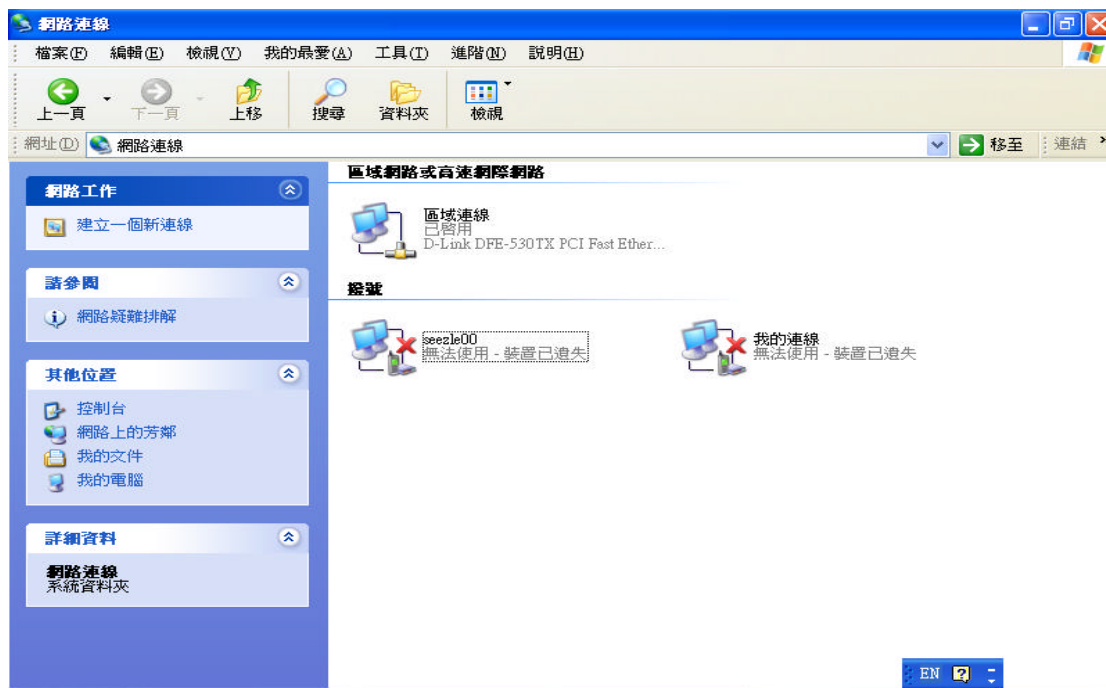
Network Connecting content

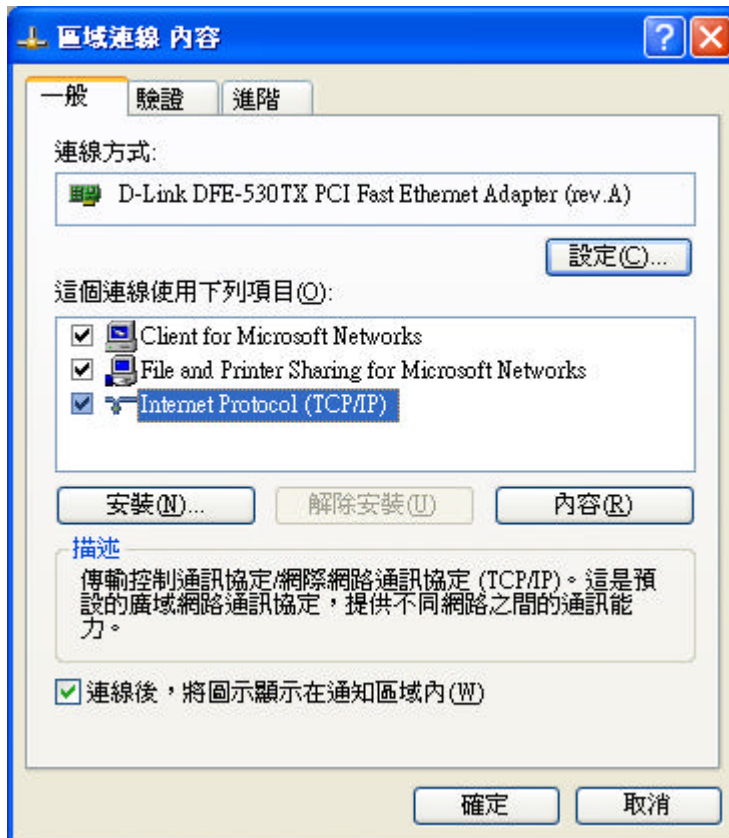
Client for Microsoft Networks

Files and Printer Sharing for Microsoft Networks

Internet Protocol (TCP/IP)

To select the TCP/IP item to begin





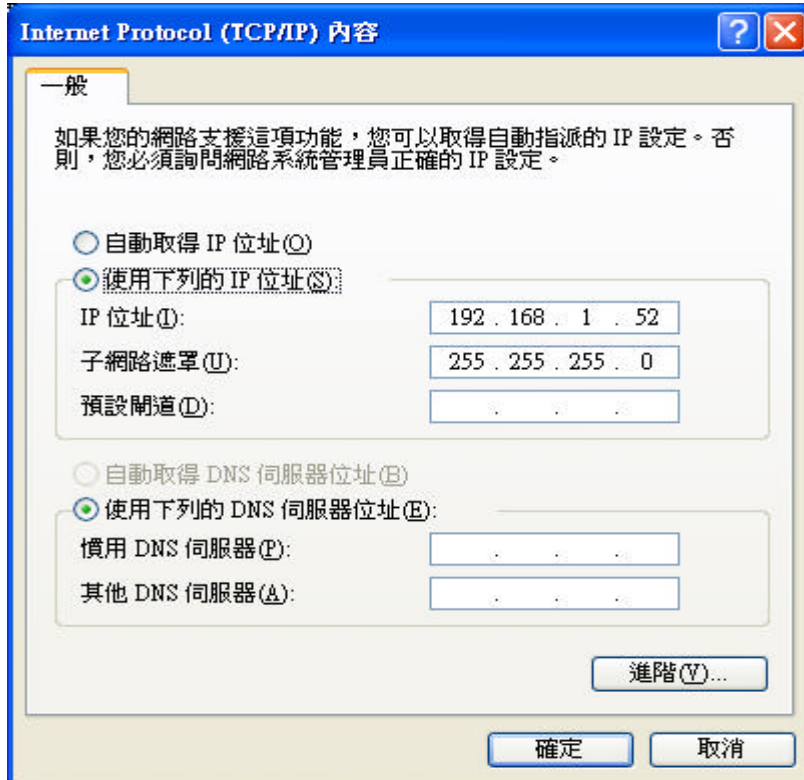
Internet Protocol (TCP/IP) set up

Select manual to enter IP address

Protocol content IP: 192.168.1.5X (except , “0”)

Mask: 255.255.255.0

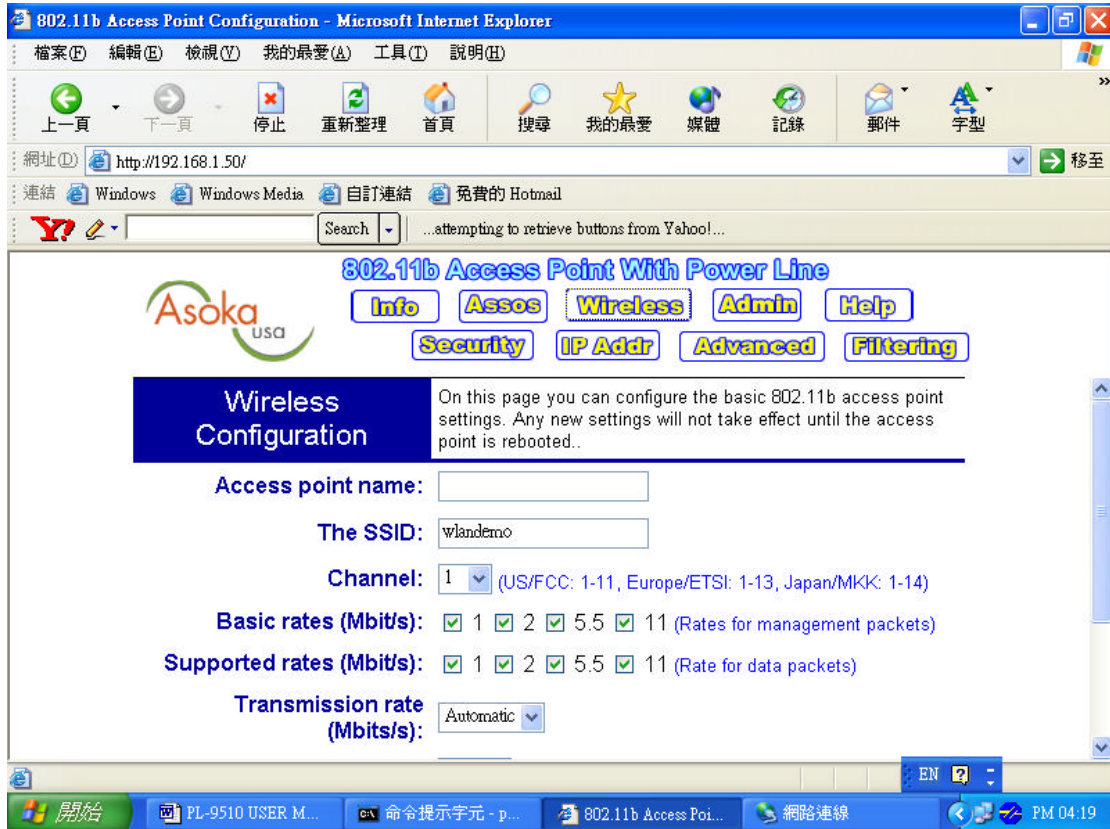
Enter



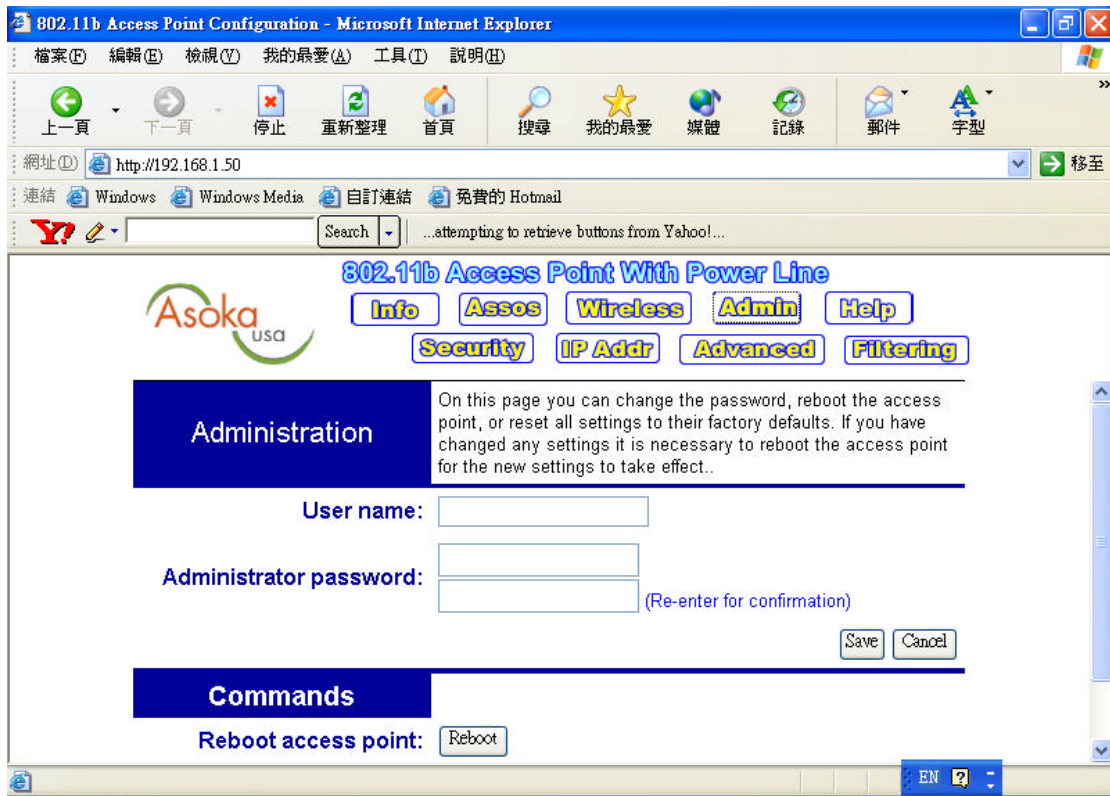
To setup Wireless configuration

1. Set web site at:

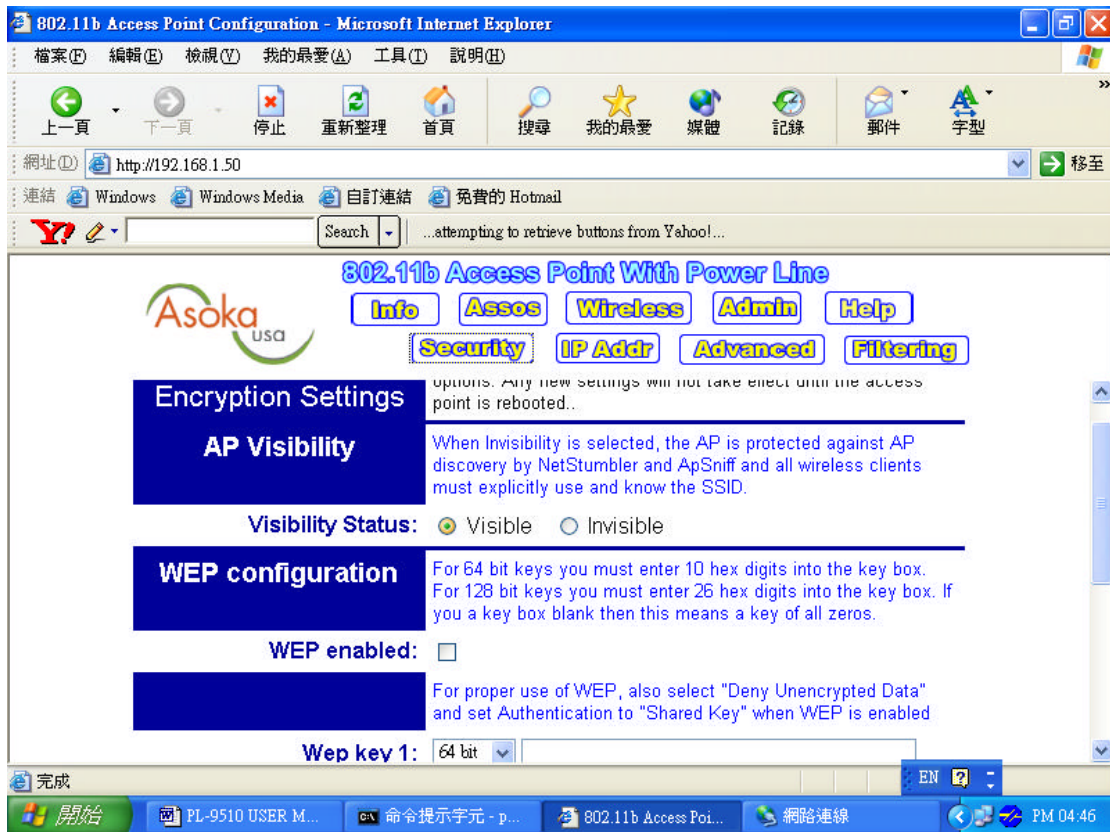
<http://192.168.1.50/>



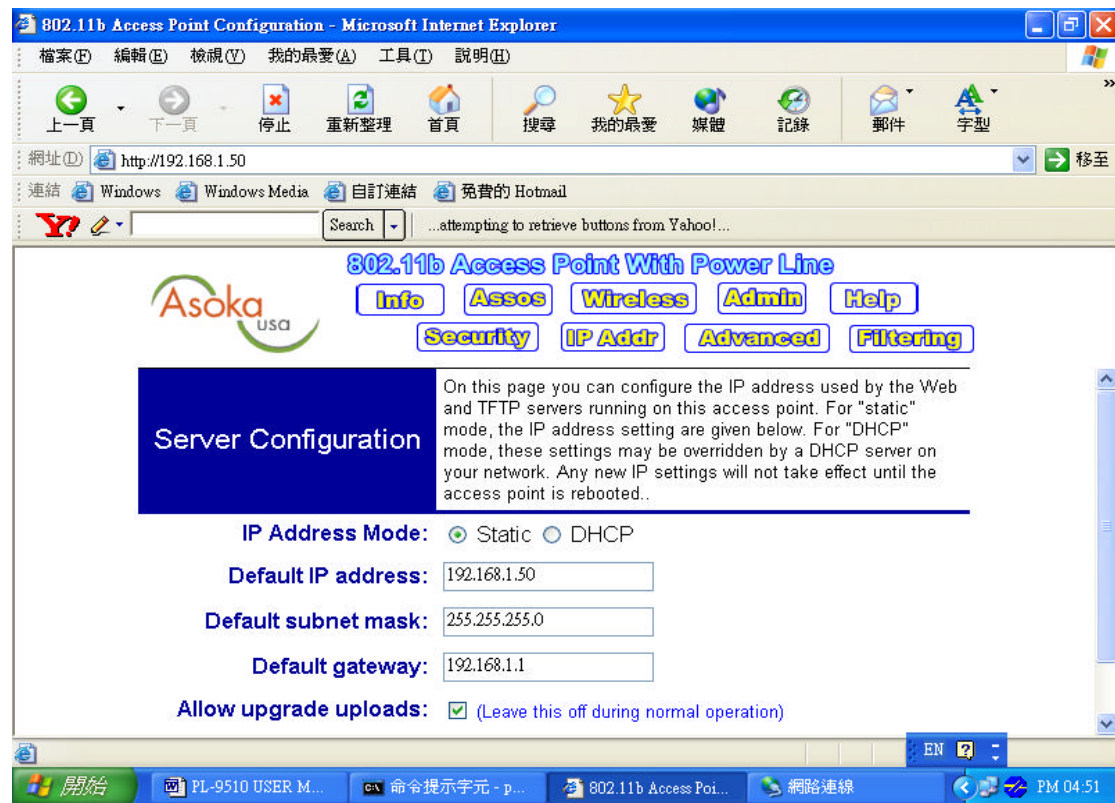
2. Change SSID: Default is wlandemo, if you have to change it in order to have the same name.
3. Info: to view its MAC of AP
4. Admin:
Write user name and password to protect any intruders.



Security:



Info:

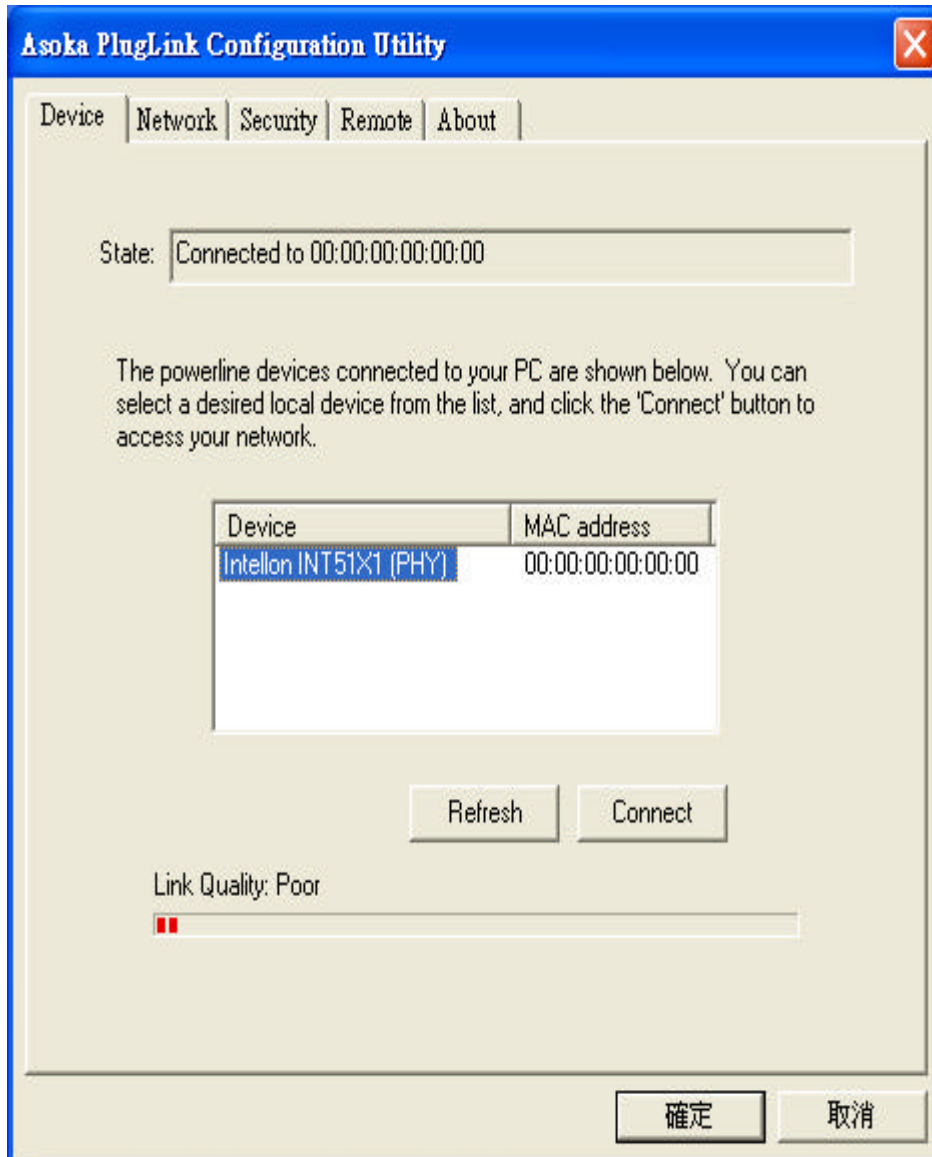


Part (II)

Install Power Packet CD

Device

Check Power line product



connecting

Network: Check PL-9510 MAC for its connection.

Remote terminal unit password

