

R60 AIS ASM Board
P/N:7000 120-110 S/N:100011 -B1
[Barcode]

R60 AIS ASM Board PCB
7000 120-113, B1
2018-11-07

71P2
SD Card

UHF RX/TX

UHF TX

5V0_RX

3V31_RX

2V5_RX

3V17_CLK_L0

5V0_TX

3V17_GPS

5V0_GPS

CPU LEDs

FPGA LEDs

Done

ETHERNET

Power Board 10s

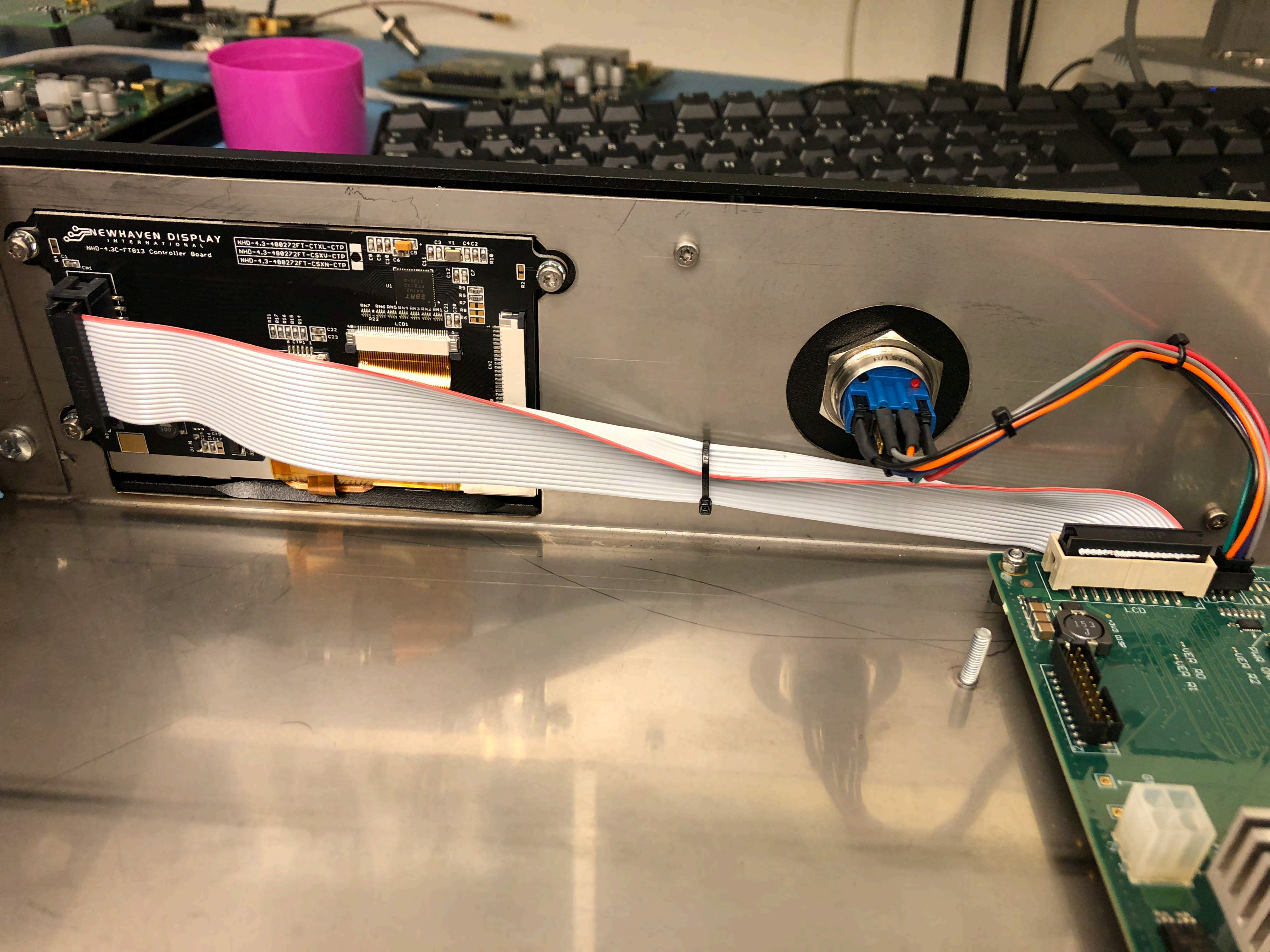
Fuse 10A

15U

5V25

3V45

1V0 1V0



NEWHAVEN DISPLAY
INTERNATIONAL

NHD-4.3C-FT013 Controller Board

NHD-4.3-400272FT-CTXL-CTP

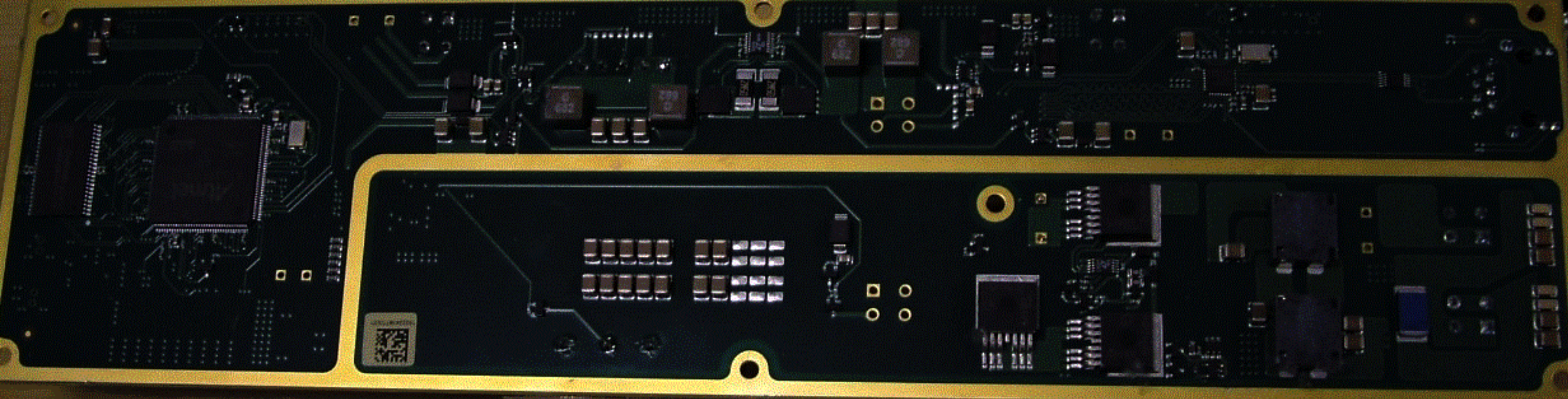
NHD-4.3-400272FT-CSXU-CTP

NHD-4.3-400272FT-CSXN-CTP



42-10 122-116
(44-10) 00

REV. 1.0



LEDs and
Pin Button



PHR ON/OFF

VER R2

VER R0

VER R1

+3V3 DISP

UDE IOs

← RST
GND
+3V3

+15VDC UDE
GND
+15V UDE



← +24V
← P_GND

+15V AIS ASM
+15VDC AIS ASM
← GND

R60 Power Board PCB
7000 120-133, C1
R60 Power Board
P/N:7000 120-130 S/N: 100005 -C1

AIS ASM IOs



ETHERNET

