

Issued by

**Johan Lindborg**

Classification Export Control

**NOT EXPORT CONTROLLED**

Date

2024-02-02

Issue

A1

Document ID

PT-24-0044

Classification Company Confidentiality

**NOT RESTRICTED**

Classification Defence Secrecy

**NOT CLASSIFIED**

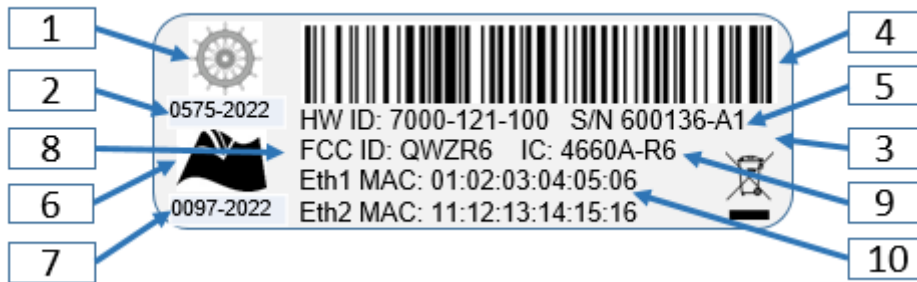
## 1 R6 Supreme labels

There are two product related labels included on the R6 SUPREME Transponder units.

One is the HW label, common for all R6 SUPREME product variants. This carries all relevant type approval markings, serial number, and HW designation. This label is unique to every individual R6 SUPREME unit.

The other is the Product label, that will uniquely identify the trade name of the product version, its order part number as well as the factory installed FW version. This is a common label for all products of identical configuration.

### 1.1 R6 Supreme HW label



7000 121-301, R6 Supreme HW label design

1. Wheelmark
2. NB number-production Year (to be continuously updated with current production year)
3. Wee symbol
4. Barcode
5. Serial number-HW rev
6. UKCA label
7. UKCA NB-production year (to be continuously updated with current production year)

### Distribution list

|           |
|-----------|
| Recipient |
|-----------|

### Authorisation

|  |      |                |            |
|--|------|----------------|------------|
|  | Date |                | Date       |
|  |      | Johan Lindborg | 2024-02-02 |



|            |       |             |
|------------|-------|-------------|
| Date       | Issue | Document ID |
| 2024-02-02 | A1    | PT-24-0044  |

Issued by  
**Johan Lindborg**  
 Classification Export Control

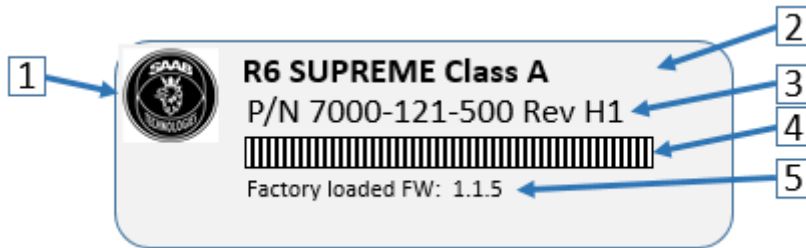
Classification Company Confidentiality  
**NOT RESTRICTED**  
 Classification Defence Secrecy

**NOT EXPORT CONTROLLED**

**NOT CLASSIFIED**

- 8. FCC ID
- 9. IC
- 10. Eth MAC addresses.

### 1.2 R6 Supreme Product label



7000 121-300, R6 Product label for R6 Supreme AIS

- 1. Saab logo
- 2. Product designation/Trade name
- 3. Product part-number and product rev
- 4. Barcode
- 5. Factory installed SW version

### 2 R6 SUPREME Label placements

The HW and Product label are placed adjacent on the side of the unit, clearly visible independent on installation orientation.



7000 121-301, R6 Supreme HW label (common for all R6 SUPREME product versions)

7000 121-300, R6 Product label (Product version specific)