

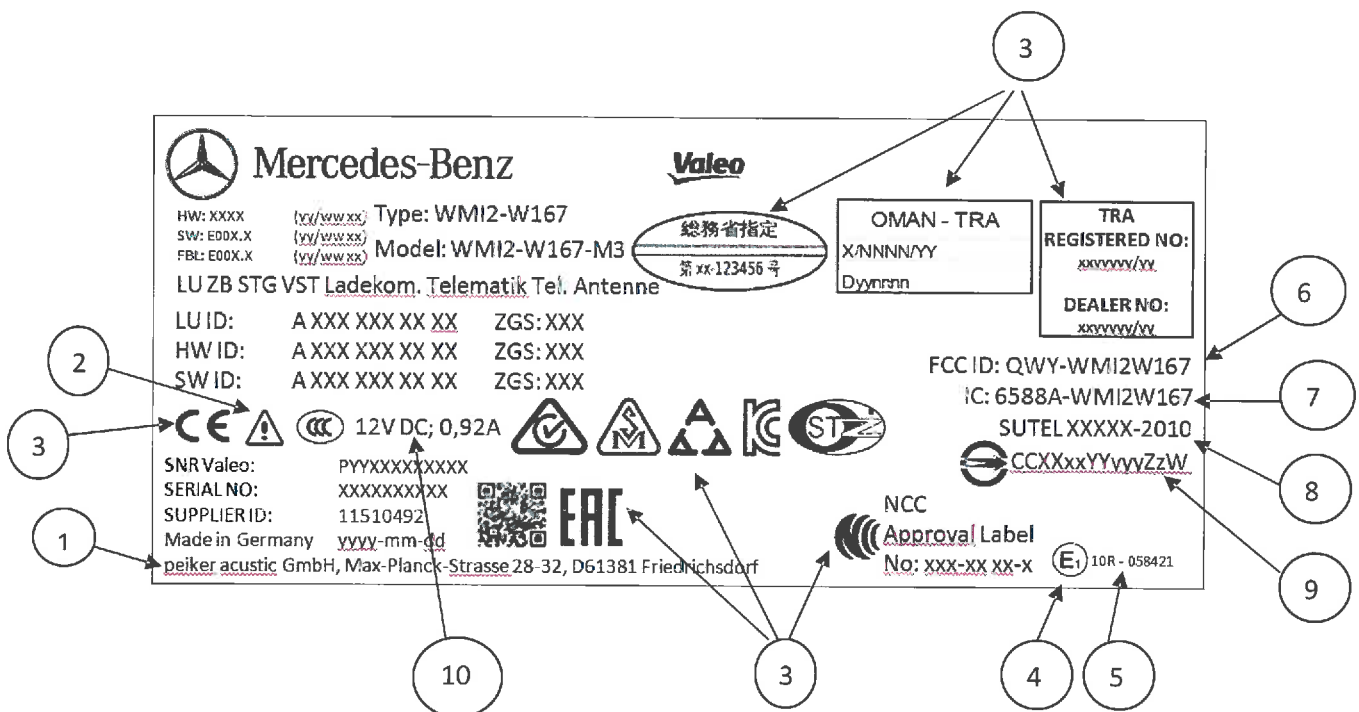
# Label description

## Wireless Mobile Interface

### WMI2-W167-M3


#### Scope

name of WMI	Model name	Peiker Teile No.
W205 - with GSM-connection	WMI2-W205	2609-090-303-51
W205 - without GSM- connection	WMI2-W205-M1	2609-090-353-51
W167 - with GSM- connection	WMI2-W167-M1	2609-090-403-51
W167 - without GSM- connection	WMI2-W167-M2	2609-090-453-51
W167 - Fond	WMI2-W167-M3	2609-090-553-51
W167 - Trucks Basic	WMI2-W167	2609-090-203-51



## Description

LU:	Scope of delivery
HW:	Hardware
SW:	Software
ID:	Identifier
SNR Valeo:	SNR- No. Valeo
Serial No:	Serial Number

- 1- Address of manufacturer
- 2-  Symbol 1b according to. EN 62368-1 F.5 – 1
- 3- Space for approval Logos
- 4- E-Mark- Logo of KBA (Kraftfahrt Bundesamt)
- 5- Type approval number of KBA 10R- 058421
- 6- FCC ID
- 7- IC certification no.
- 8- Approval Costa Rica
- 9- Taiwan BSMI approval
- 10- Nominal voltage, kind of voltage, rated current of the device

## Label Location

