







Annex 3: EUT Internal Photographs to  
**TEST REPORT**  
 No.: 17-1-0290001T07

According to:  
**FCC Regulations**  
 Part 18.305  
 Part 18.307

for

**Peiker acustic GmbH**  
 Wireless Mobile Interface  
 WMI2-W167-M1  
 2609-090-403-51

FCC-ID: QWY-WMI2W167

Laboratory Accreditation and Listings			
 Deutsche Akkreditierungsstelle D-PL-12047-01-01	 FEDERAL COMMUNICATIONS COMMISSION USA MRA US-EU 0003	 Industry Canada Reg. No.: 3462D-1 Reg. No.: 3462D-2 Reg. No.: 3462D-3	 Voluntary Controls for Electromagnetic Emissions Reg. No.: R-2666 C-2914, T-1967, G-301
 <b>WiFi</b> ALLIANCE AUTHORIZED RF LABORATORY	 <b>ctia</b> Authorized Test Lab Lab Code: 20011130-00		
accredited according to DIN EN ISO/IEC 17025			
<p align="center"> <b>CETECOM GmbH</b>            Laboratory Radio Communications &amp; Electromagnetic Compatibility            Im Teelbruch 116 • 45219 Essen • Germany            Registered in Essen, Germany, Reg. No.: HRB Essen 8984            Tel.: + 49 (0) 20 54 / 95 19-954 • Fax: + 49 (0) 20 54 / 95 19-964            E-mail: info@cetecom.com • Internet: www.cetecom.com         </p>			

## Table of contents

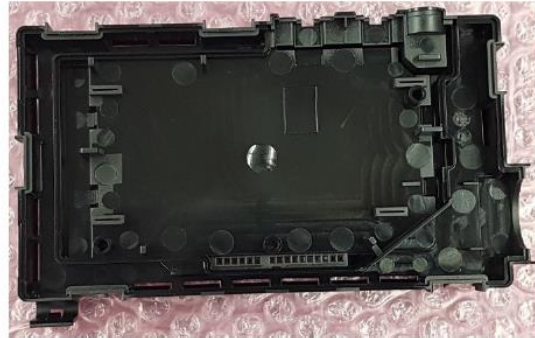
1. INTERNAL PHOTOGRAPHS OF EUT:.....	3
--------------------------------------	---

# 1. Internal photographs of EUT:

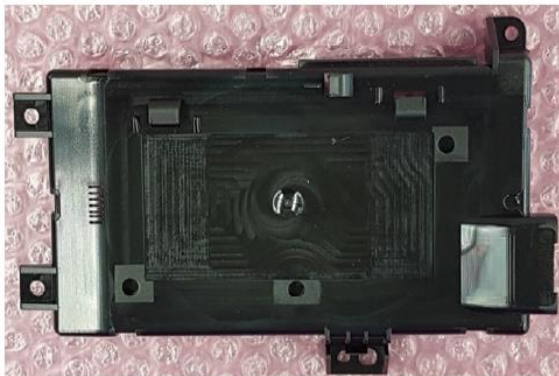
## 1.1. EUT Photographs



Top Housing, View from outside on the part.



Top Housing, view inside the Part.



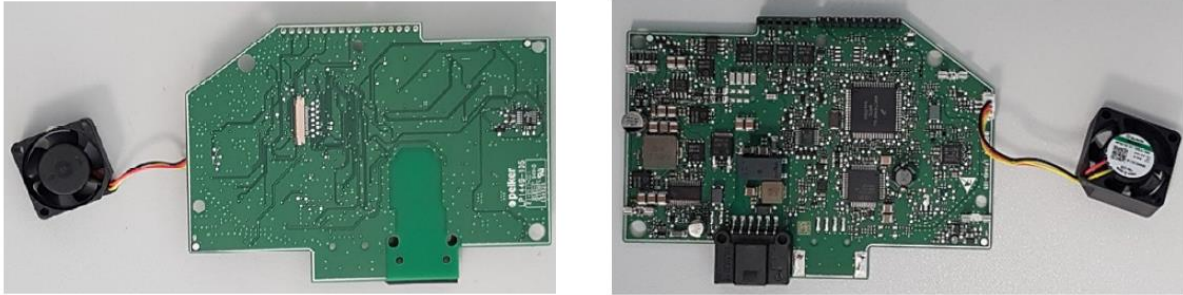
Bottom Housing, View from outside on the part.



Bottom Housing, view inside the Part.



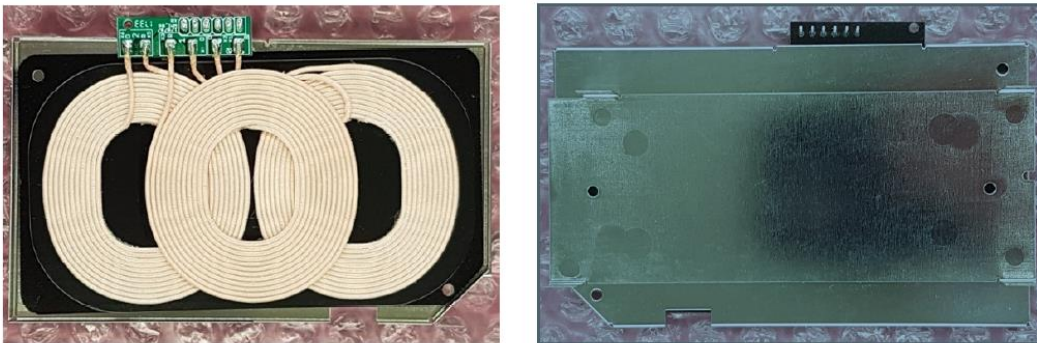
Main-Board with JTAG-Connector and Fan



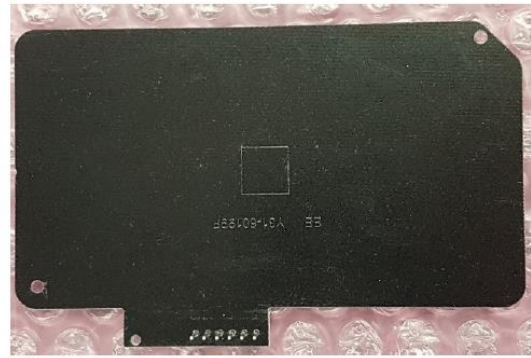
Main-Board, bottom and top view with connected Fan.



Fan, stand alone, top / bottom view.



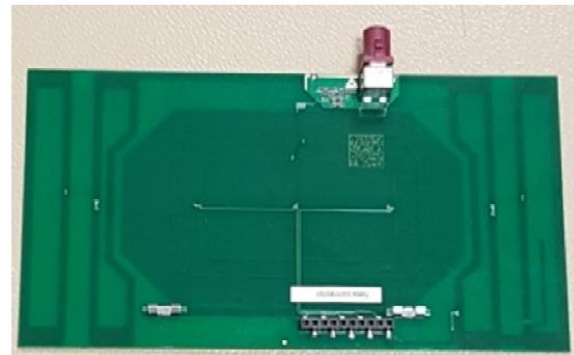
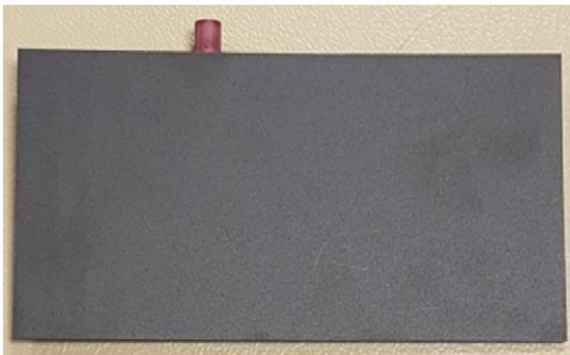
Charging coil element with connector, ferrite plate and metal shield, view from top and bottom side.



Charging coil module with ferrite plate, top and bottom view.



Metal shield, top and bottom view.



Antenna-PCB (NFC-Antenna and GSM-Coupling-Antenna), top and bottom view.