

WMI2- W167 M2

Pictures intern

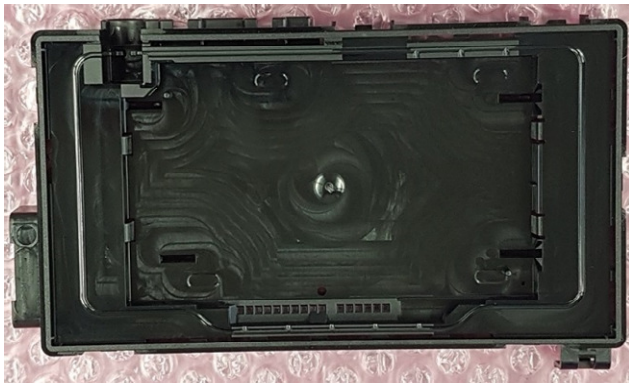
Status : Draft

Version : 1.1

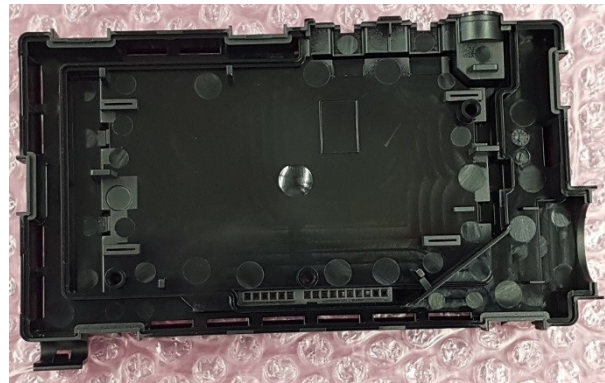
Author :Stefan Hofmann

Date : 05.01.2018

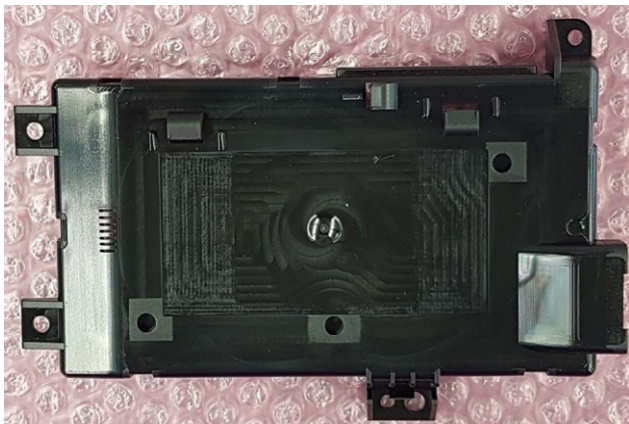
WMI BR167 M2



Top Housing, View from outside on the part.



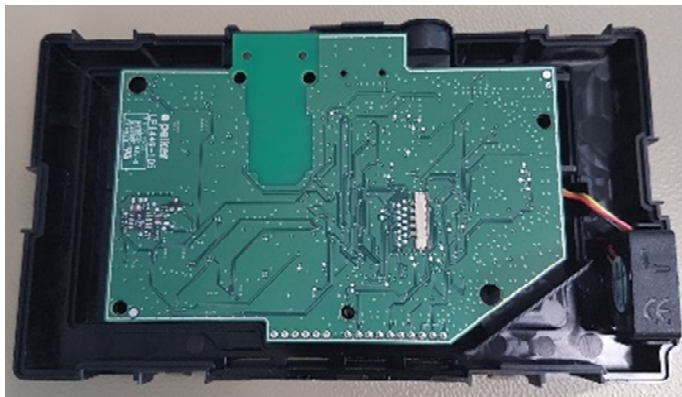
Top Housing, view inside the Part.



Bottom Housing, View from outside on the part.



Bottom Housing, view inside the Part.



After removing Bottom-Housing, WMI2-W167 M2 looks like this. You see Main-Board with JTAG-Connector and Fan.

WMI2- W167 M2

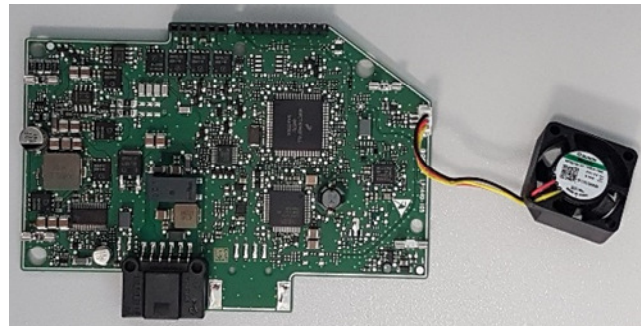
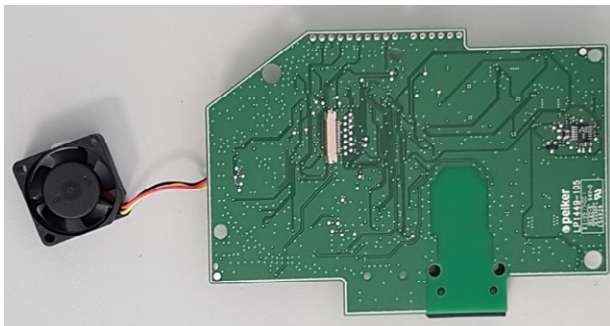
Pictures intern

Status : Draft

Version : 1.1

Author :Stefan Hofmann

Date : 05.01.2018



Main-Board, bottom and top view with connected Fan.



Fan, stand alone, top / bottom view.



Charging coil element with connector, ferrite plate and metal shield, view from top and bottom side.

WMI2- W167 M2

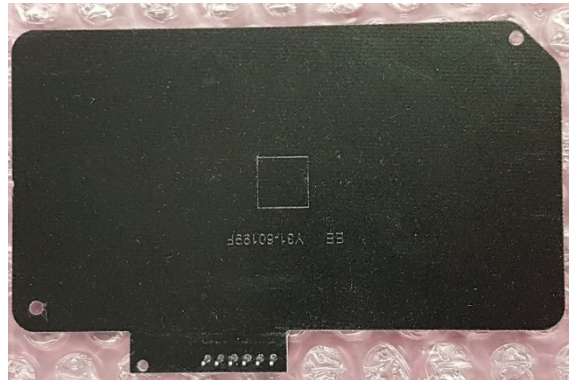
Pictures intern

Status : Draft

Version : 1.1

Author :Stefan Hofmann

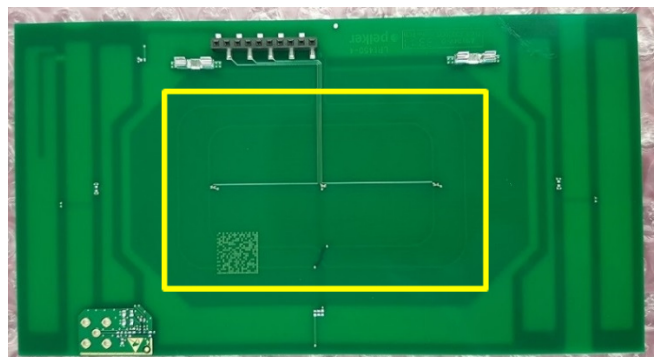
Date : 05.01.2018



Charging coil module with ferrite plate, top and bottom view.



Metal shield, top and bottom view.



Antenna-PCB (only NFC-Antenna, GSM coupling Antenna not used) top and bottom view.
The NFC-Antenna is yellow marked in the inner Layer of the PCB.